


## Retention Ponds in Sungai Petani No. 11

Name of Development	Taman Semarak (III)		
Developed Area	57.3 ha	Year of Construction	
Area of Pond	4,770 m <sup>2</sup>	Depth of Pond	4.8 m
Storage Capacity	20,030 m <sup>3</sup>	Catchment Area	15.7 ha
Additional Function	Oxidation for Domestic Wastewater		
Drainage System	Sg. Pasir		
Outlet Structure and Maintenance	<ul style="list-style-type: none"> <li>•difficult to find out the structure due to thick growth of weeds and being submerged (plugged)</li> <li>•poor maintenance (weeding work is necessary)</li> </ul>		
Environmental Condition	<ul style="list-style-type: none"> <li>•thick growth of kangkung</li> </ul>		
Overview of Pond			
Outlet Structure			

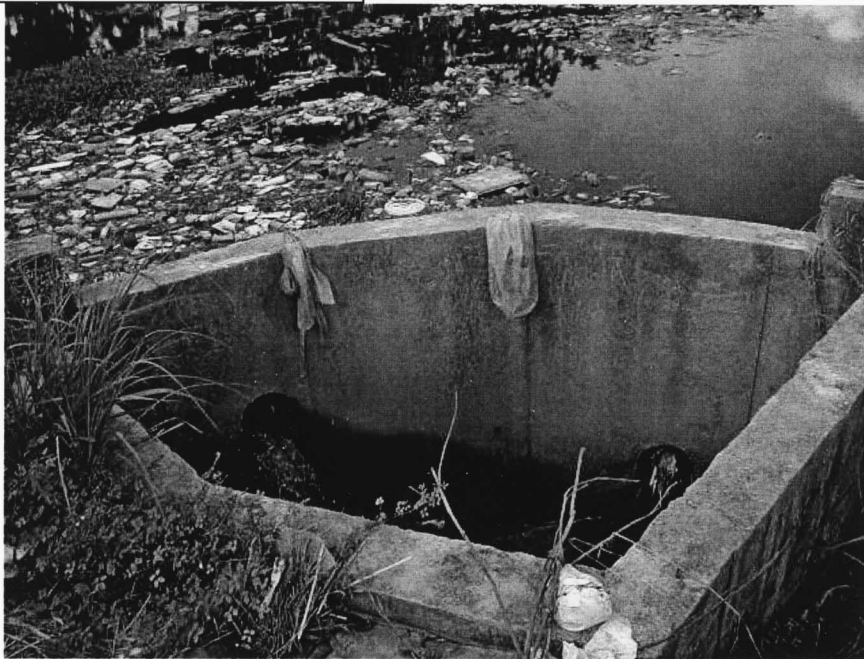
## Retention Ponds in Sungai Petani No. 12

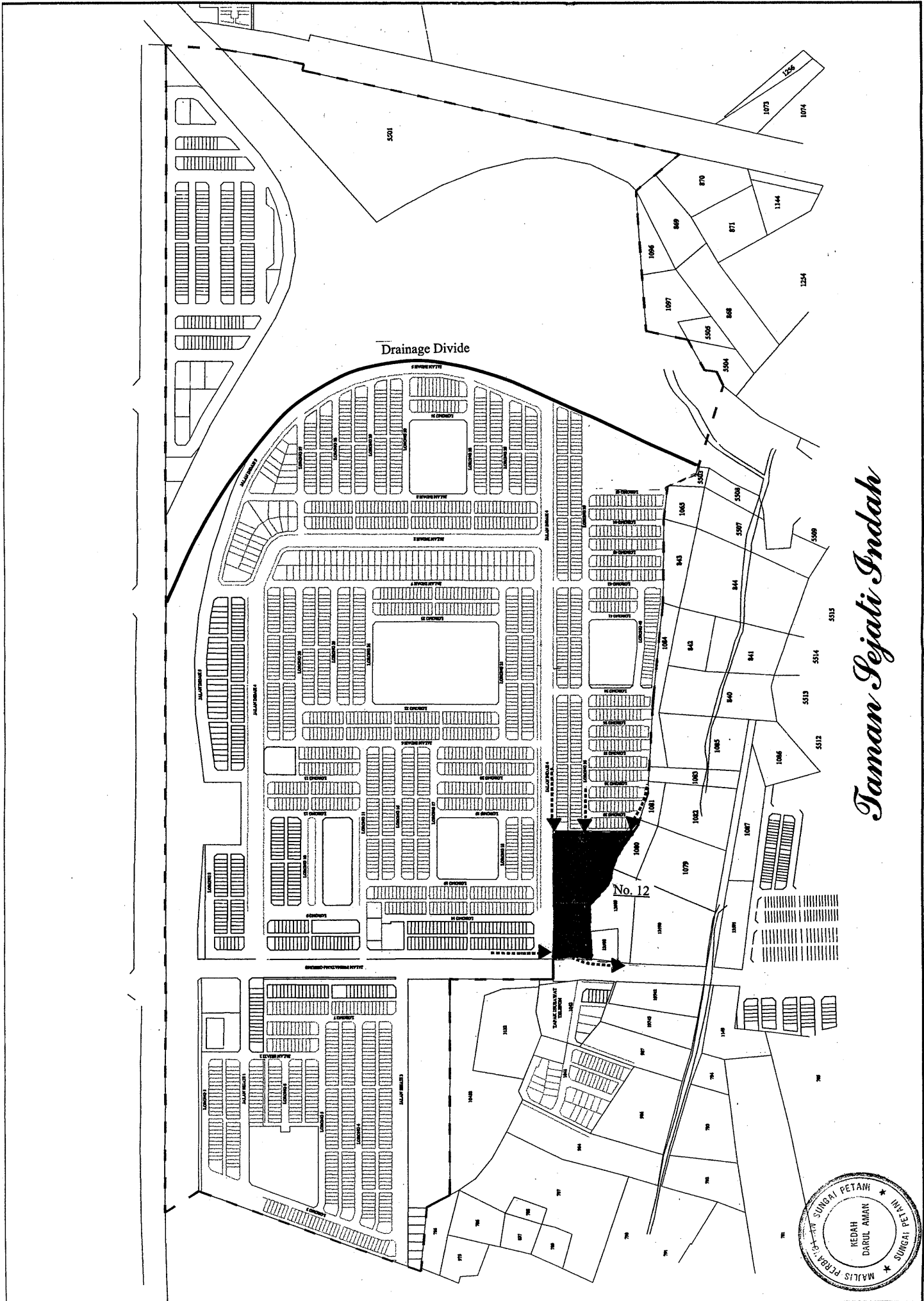
Name of Development	Taman Sejati Indah		
Developed Area	136.6 ha	Year of Construction	
Area of Pond	20,370 m <sup>2</sup>	Depth of Pond	6.0 m
Storage Capacity	110,000 m <sup>3</sup>	Catchment Area	92.4 ha
Additional Function	Oxidation for Domestic Wastewater		
Drainage System	Sg. Pasir		
Outlet Structure and Maintenance	<ul style="list-style-type: none"> <li>•three concrete pipes with a circle 0.3 m in diameter</li> <li>•poor maintenance (lower two pipes are plugged with rubbish)</li> </ul>		
Environmental Condition	<ul style="list-style-type: none"> <li>•lots of floating rubbish and offensive odor</li> </ul>		

## Overview of Pond

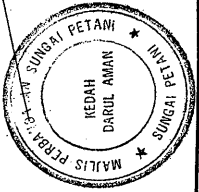


## Outlet Structure





*Taman Sejati Indah*



## Retention Ponds in Sungai Petani No. 13

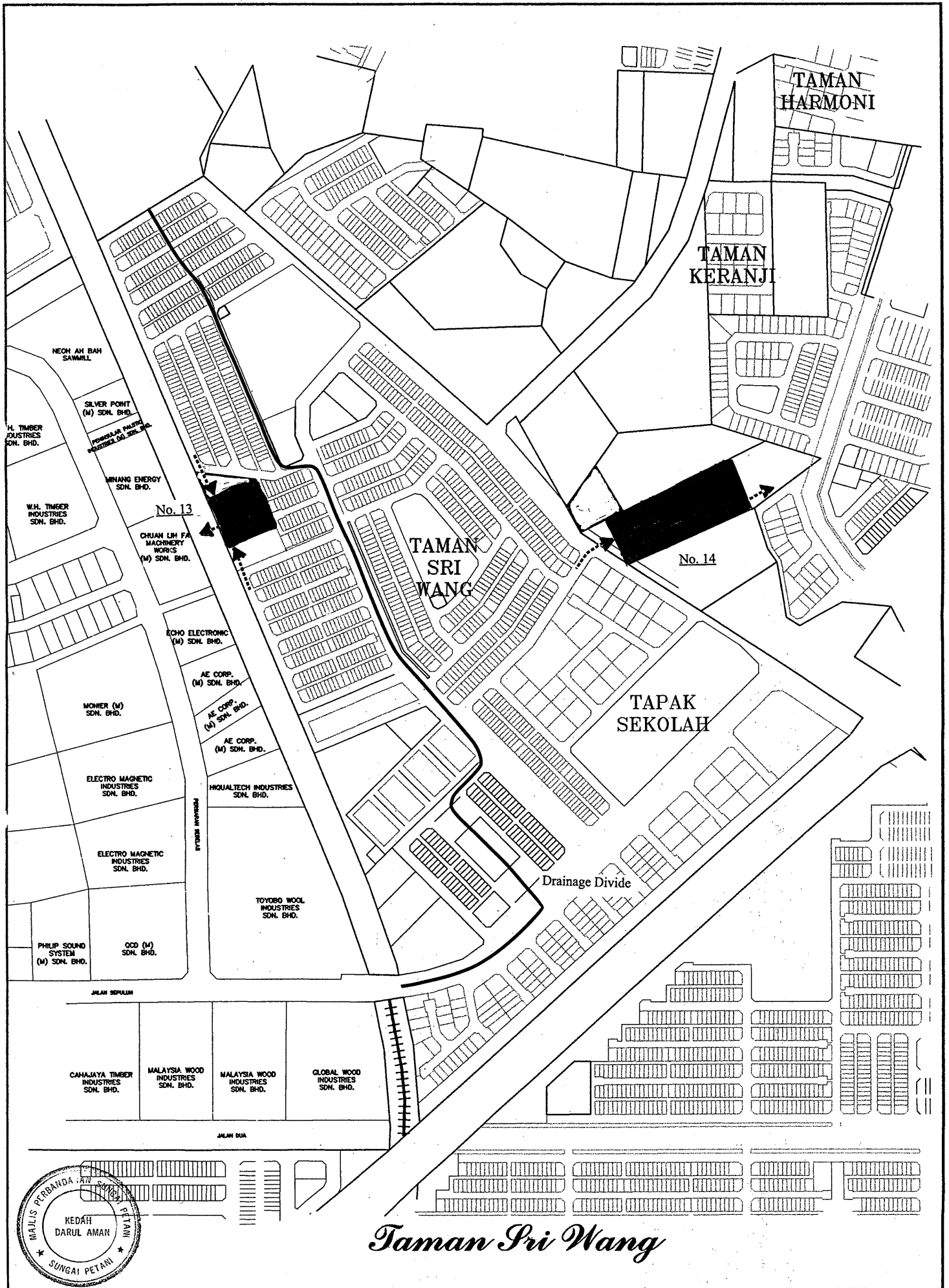
Name of Development	Taman Sri Wang (K/Api)		
Developed Area	54.1 ha	Year of Construction	
Area of Pond	4,380 m <sup>2</sup>	Depth of Pond	2.5 m
Storage Capacity	8,320 m <sup>3</sup>	Catchment Area	16.4 ha
Additional Function	Oxidation for Domestic Wastewater		
Drainage System	Sg. Gelugor, Sg. Petani		
Outlet Structure and Maintenance	<ul style="list-style-type: none"> <li>•concrete orifice with a square 0.4 m in width and height (plugged with rubbish)</li> </ul>		
Environmental Condition	<ul style="list-style-type: none"> <li>•thick growth of weeds, accumulation of rubbish, black water and offensive odor</li> </ul>		

## Overview of Pond



## Outlet Structure





*Taman Sri Wang*