

FIGURES

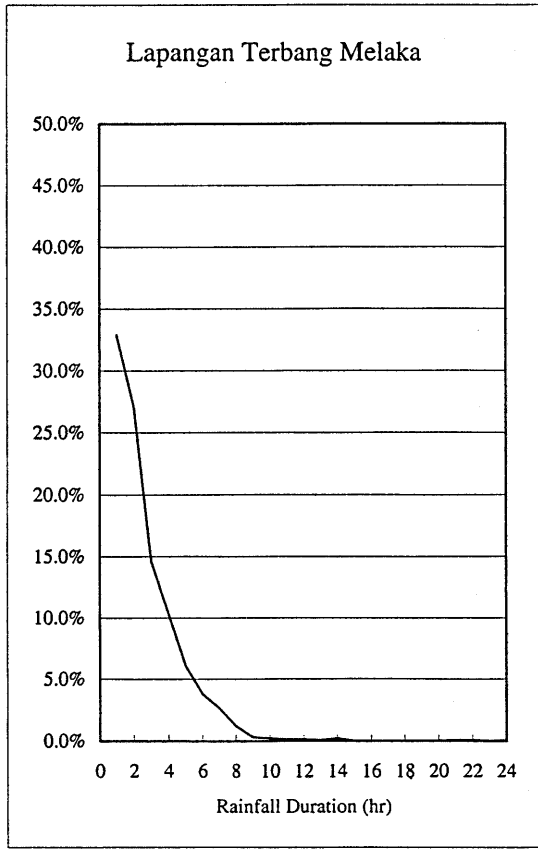
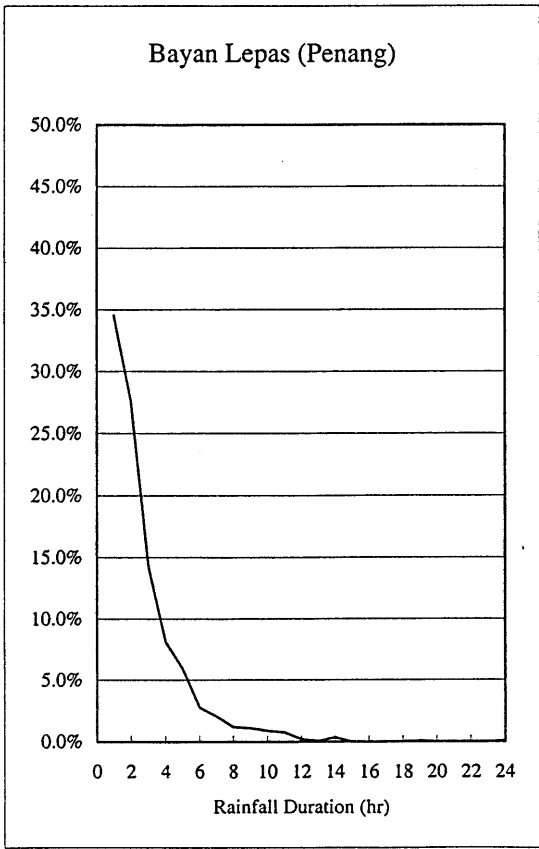
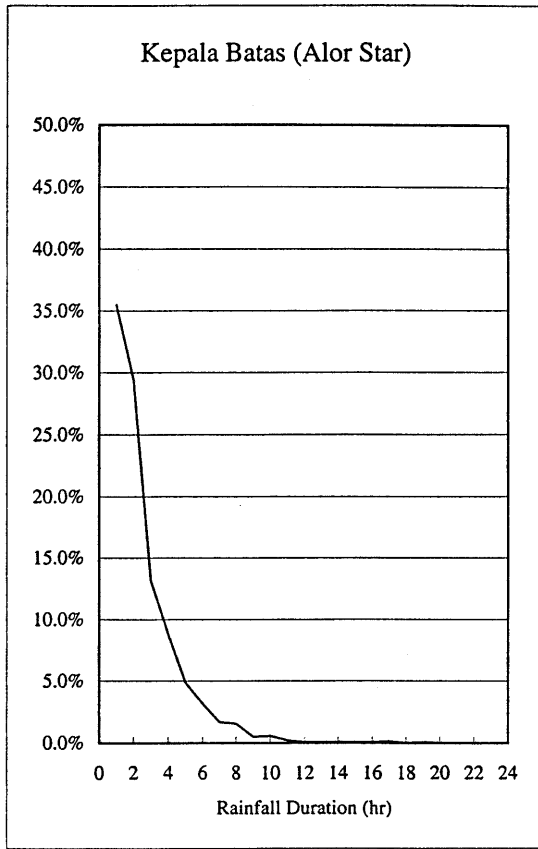
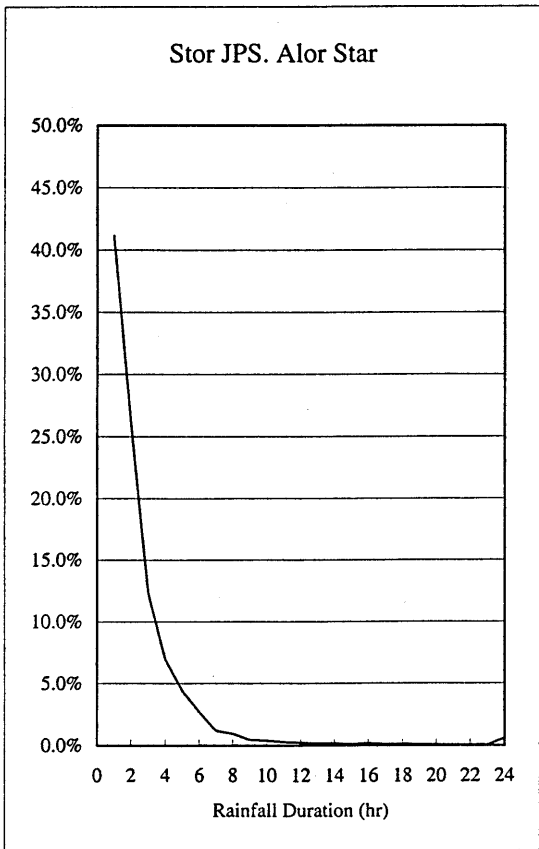
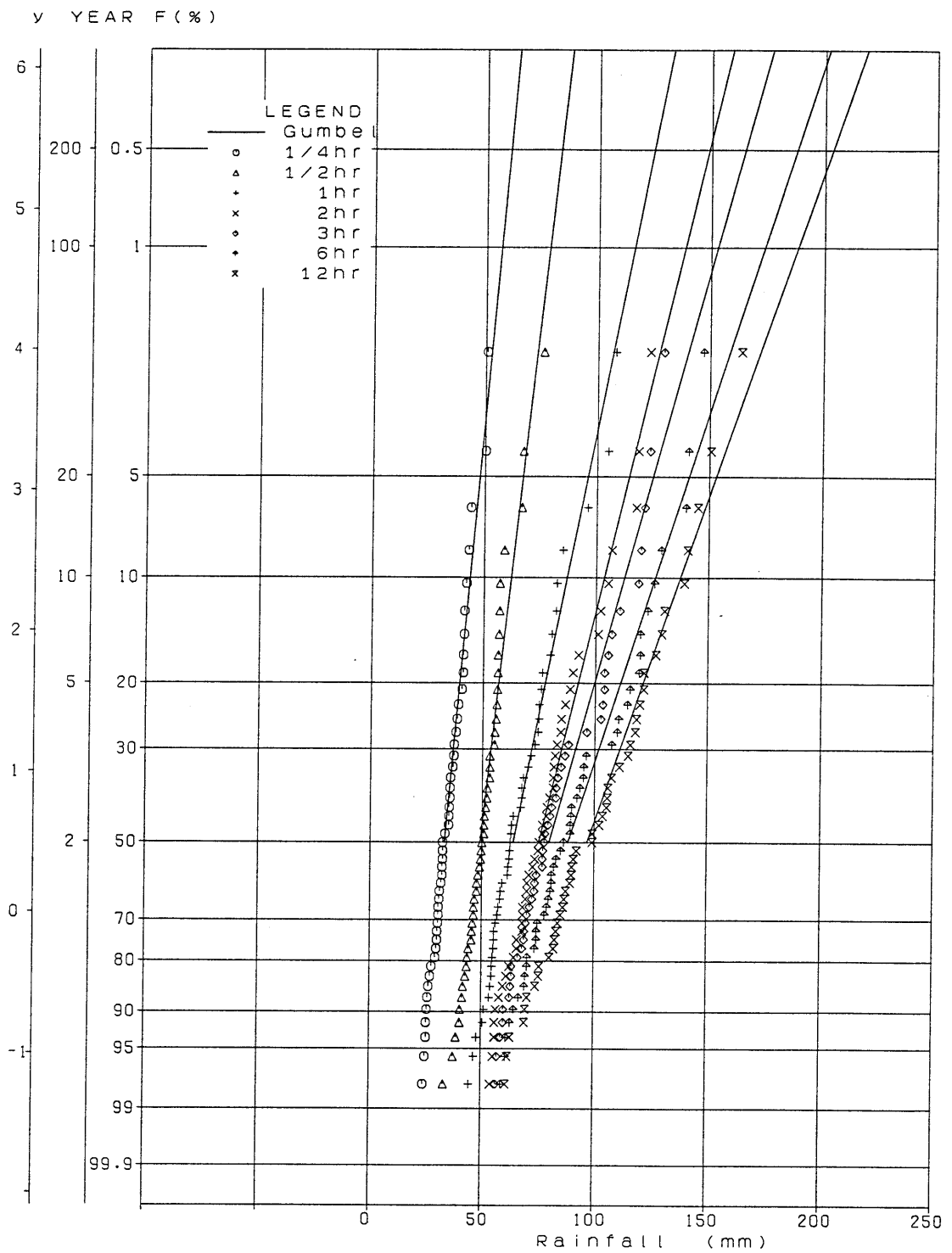
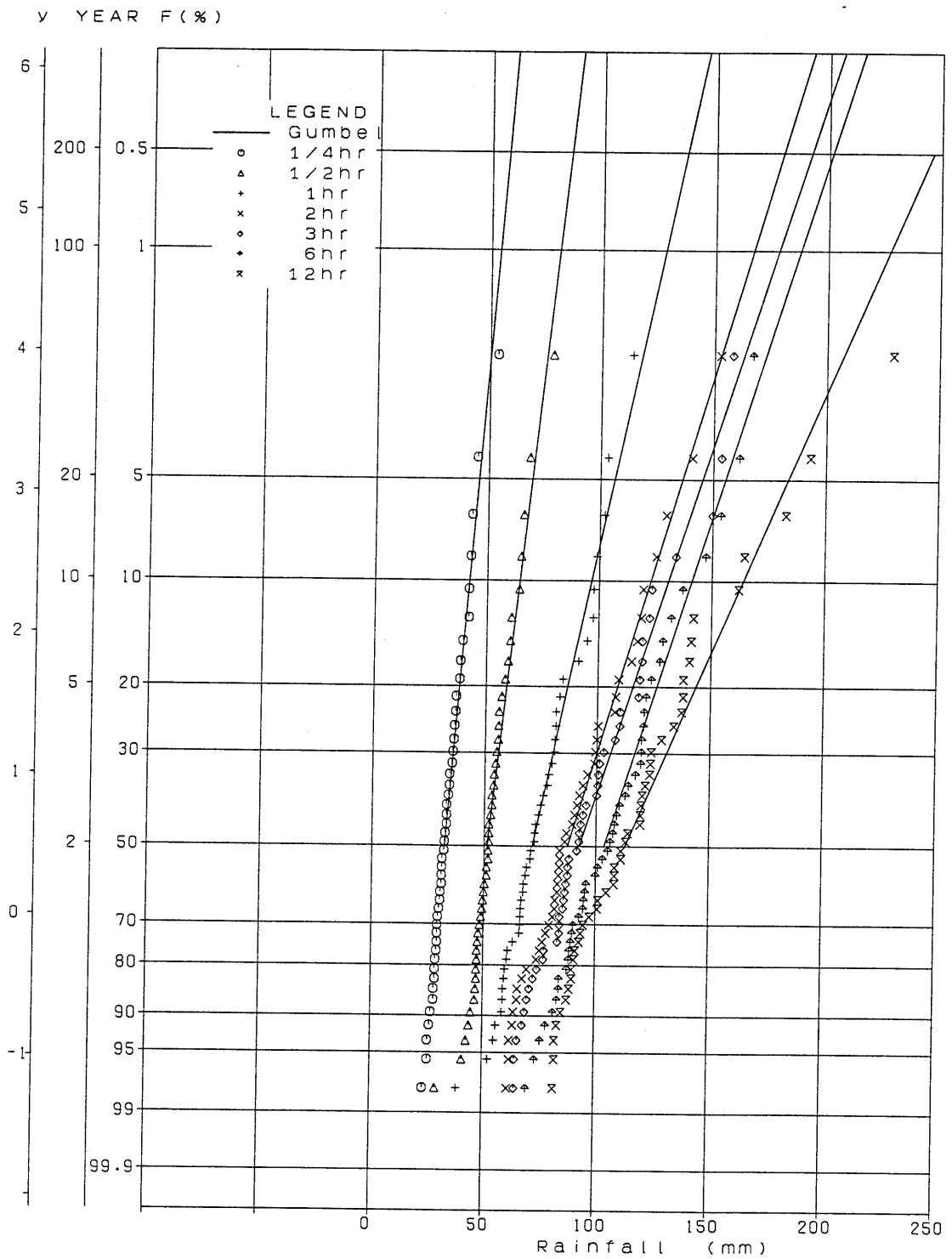


Fig. I-1
Histogram of Observed Rainfall
Duration



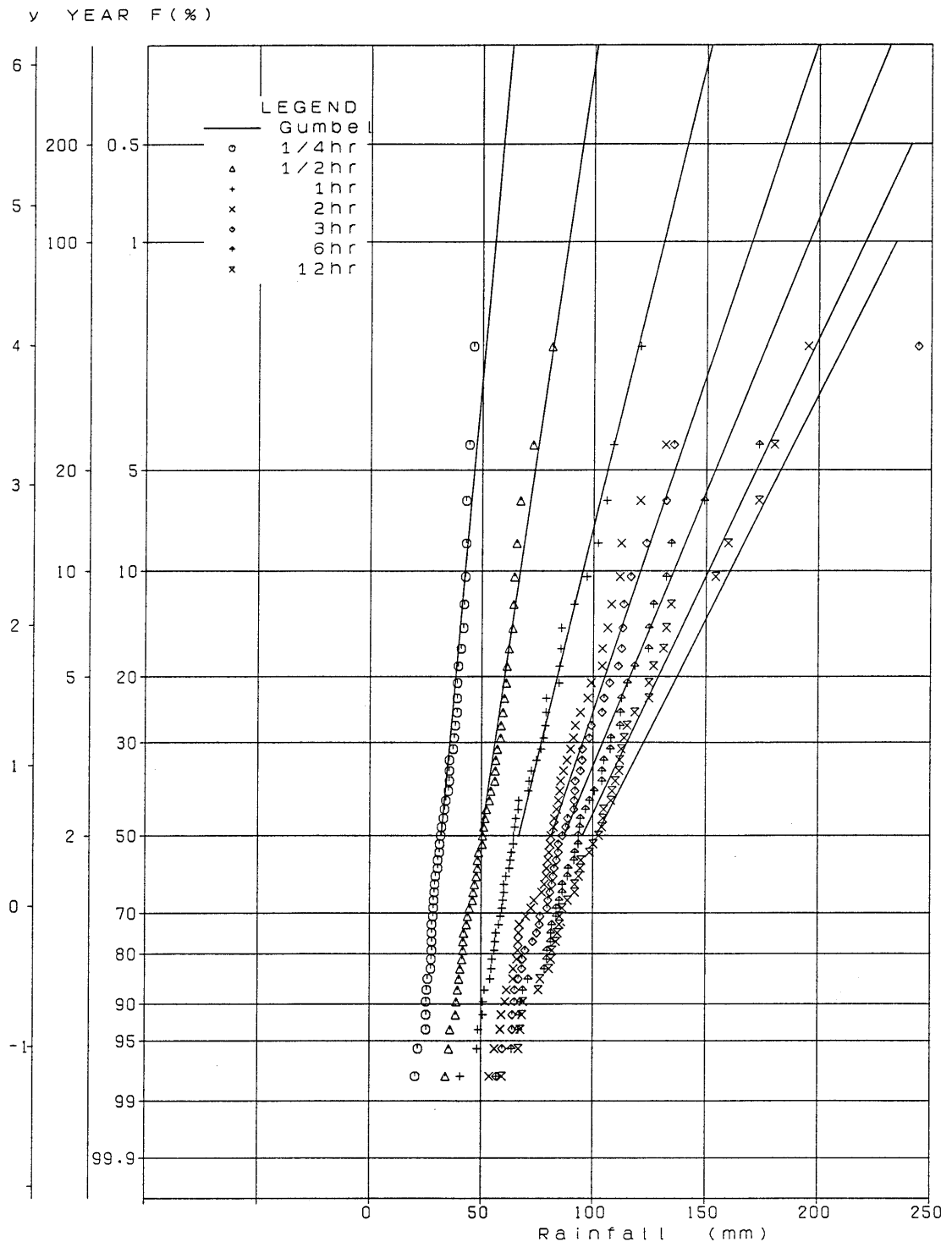
THE STUDY ON
 INTEGRATED URBAN DRAINAGE IMPROVEMENT
 FOR MELAKA AND SUNGAI PETANI IN MALAYSIA
 JAPAN INTERNATIONAL COOPERATION AGENCY

Fig. I-2 (1/3)
**Probable Rainfall Intensity (Kepala
 Batas, Alor Star)**



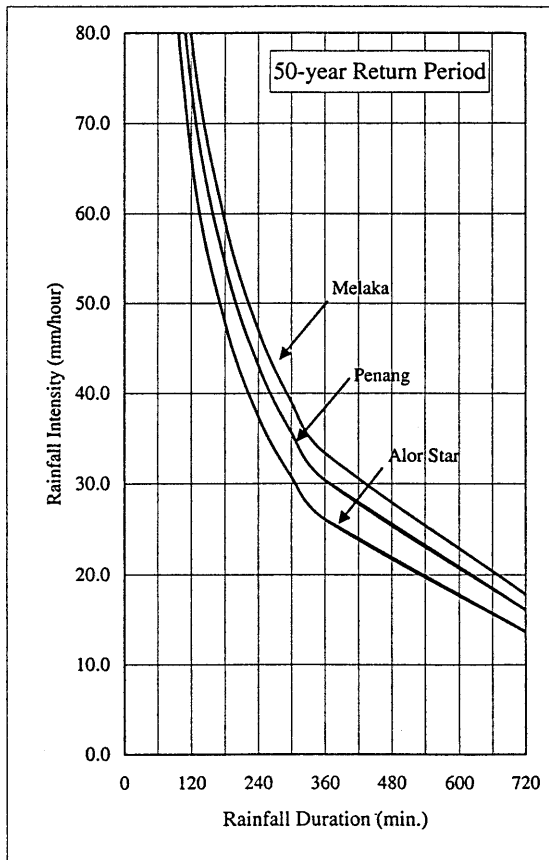
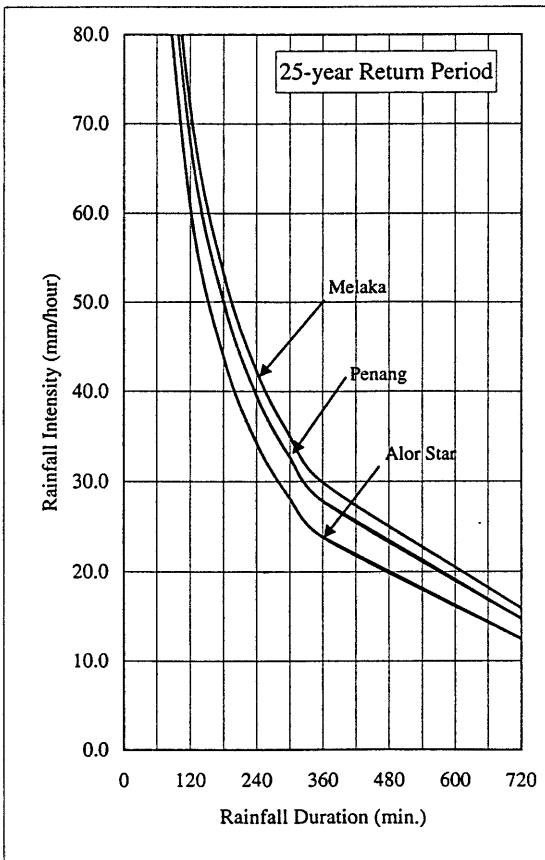
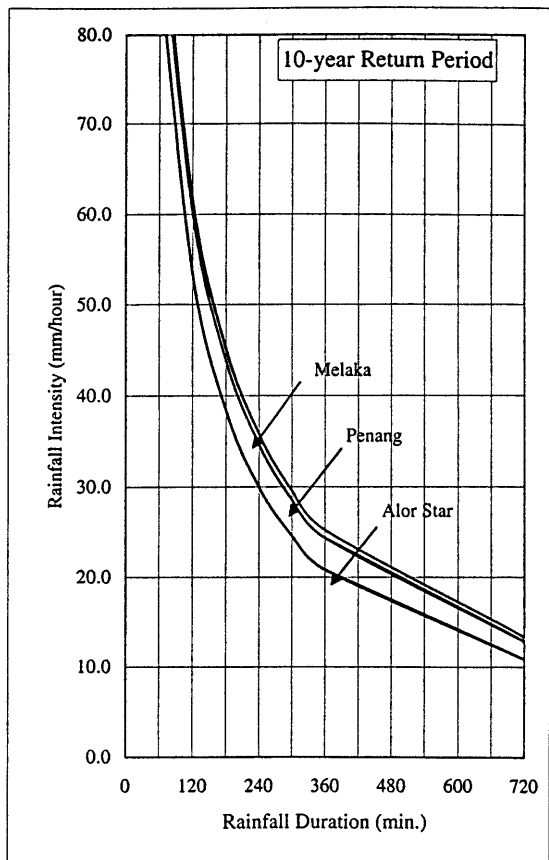
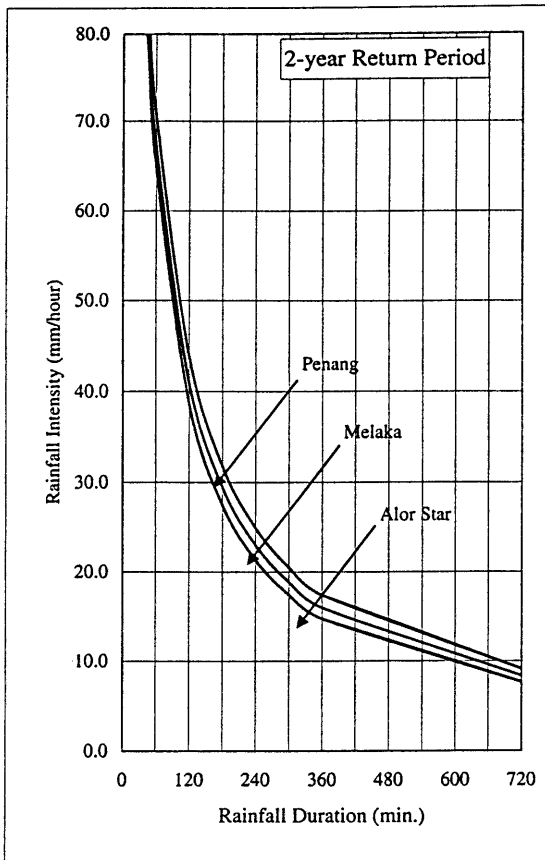
THE STUDY ON
 INTEGRATED URBAN DRAINAGE IMPROVEMENT
 FOR MELAKA AND SUNGAI PETANI IN MALAYSIA
 JAPAN INTERNATIONAL COOPERATION AGENCY

Fig. I-2 (2/3)
Probable Rainfall Intensity (Bayan Lepas, Penang)



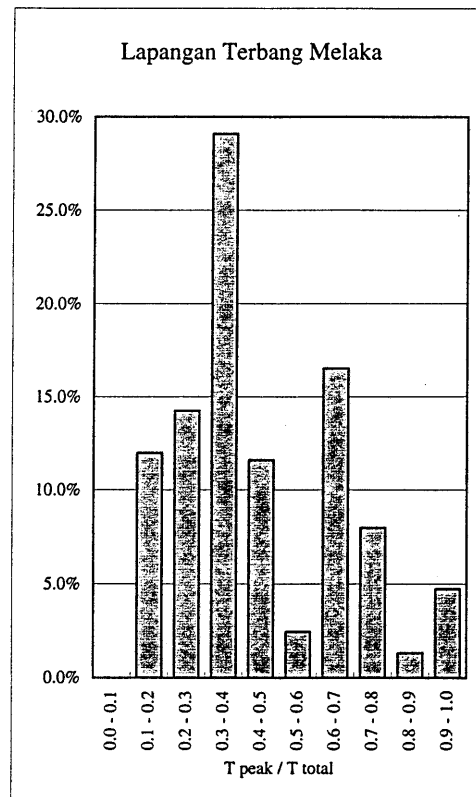
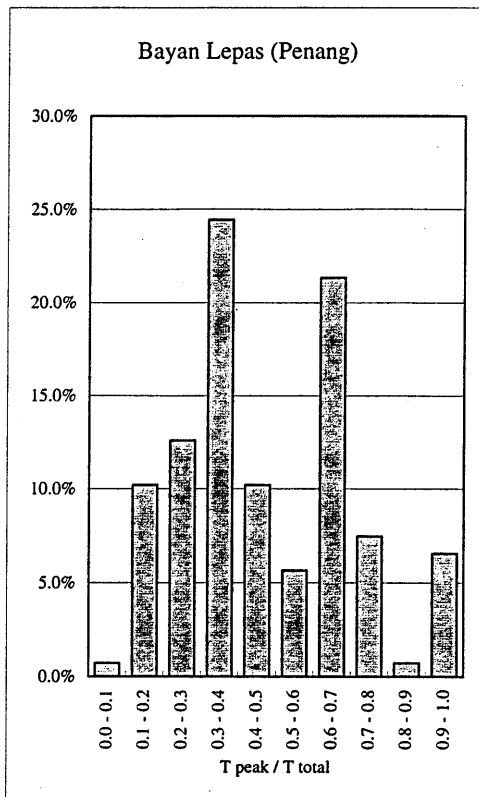
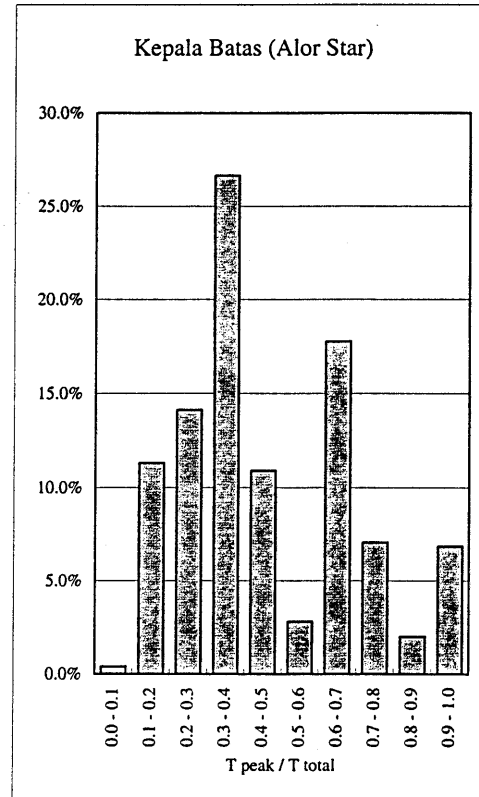
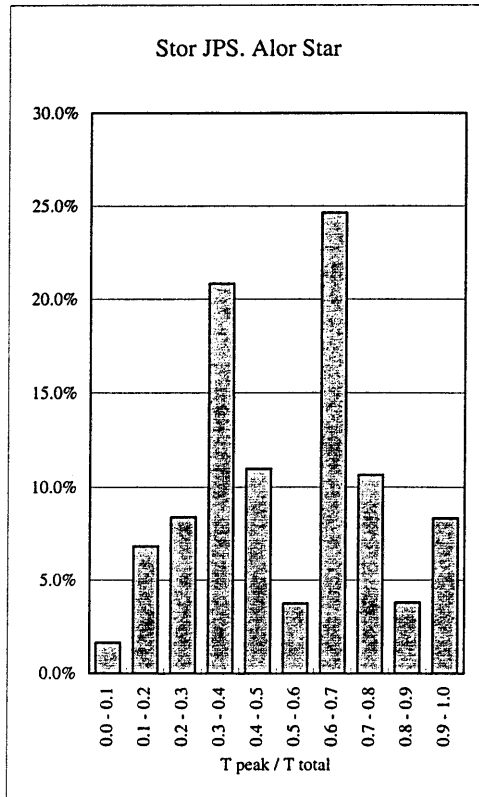
THE STUDY ON
 INTEGRATED URBAN DRAINAGE IMPROVEMENT
 FOR MELAKA AND SUNGAI PETANI IN MALAYSIA
 JAPAN INTERNATIONAL COOPERATION AGENCY

Fig. I-2 (3/3)
 Probable Rainfall Intensity (Lapangan
 Terbang, Melaka)



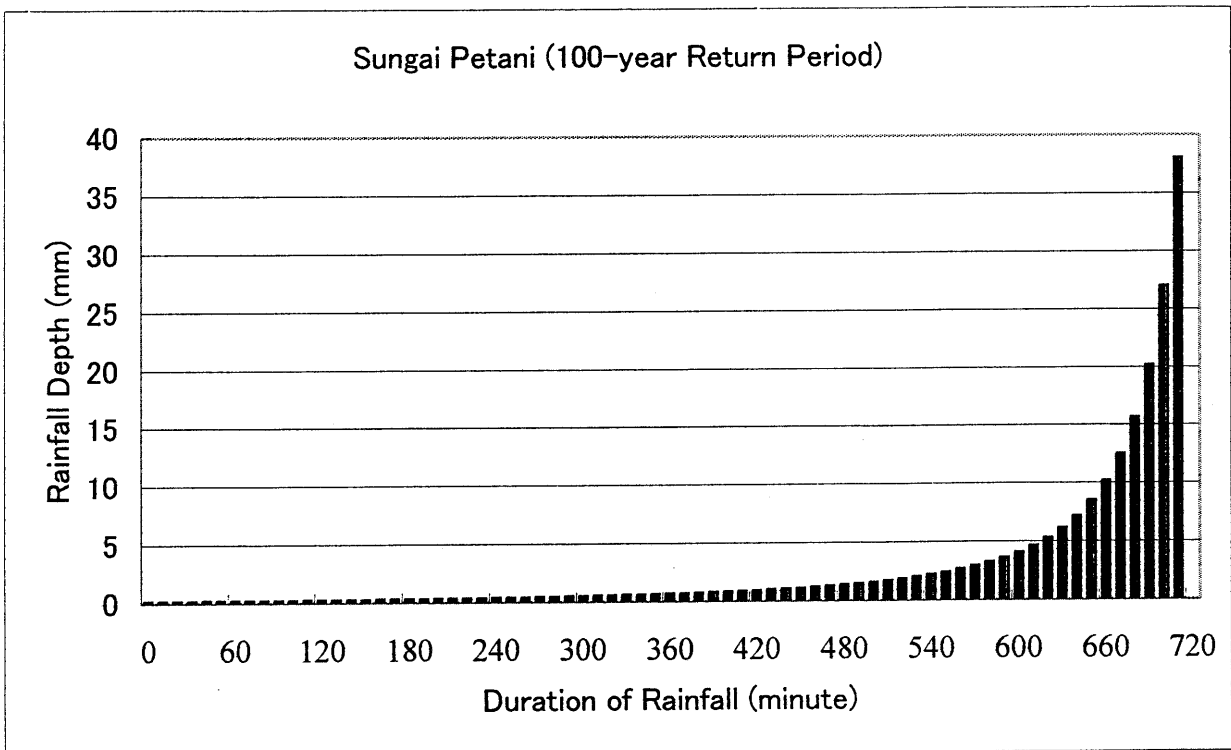
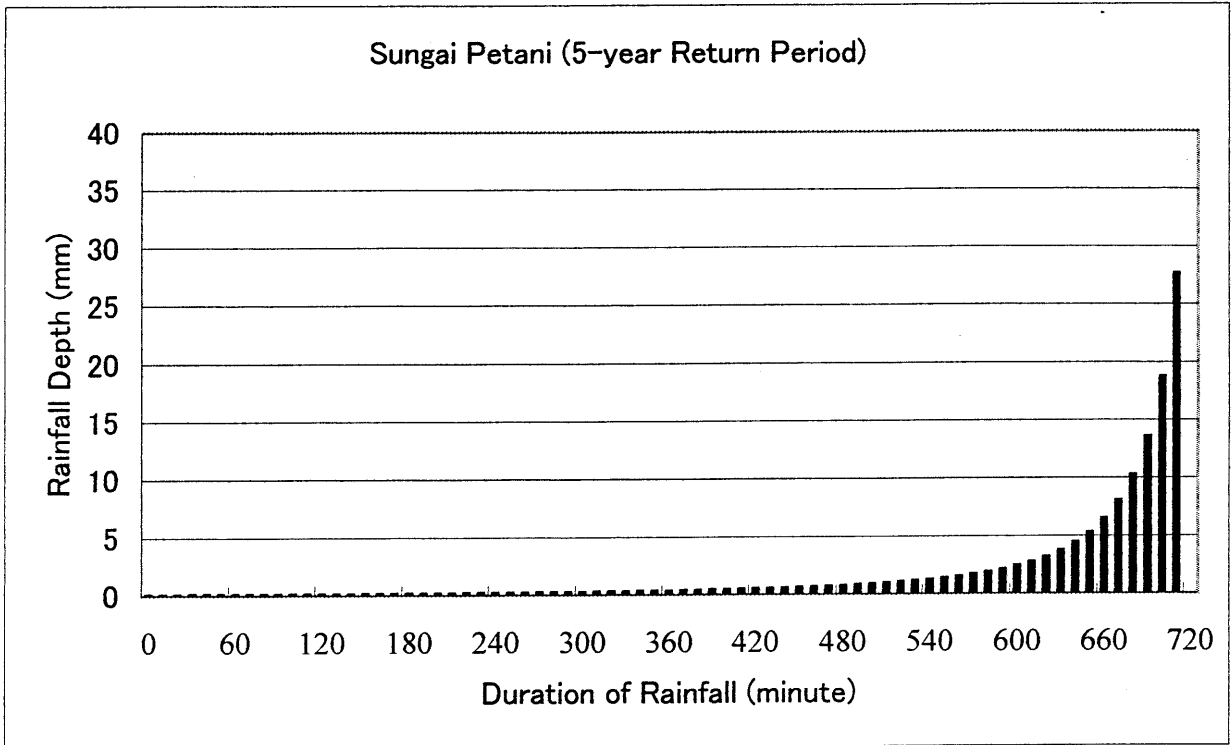
THE STUDY ON
 INTEGRATED URBAN DRAINAGE IMPROVEMENT
 FOR MELAKA AND SUNGAI PETANI IN MALAYSIA
 JAPAN INTERNATIONAL COOPERATION AGENCY

Fig. I-3
Rainfall Intensity - Duration Curve



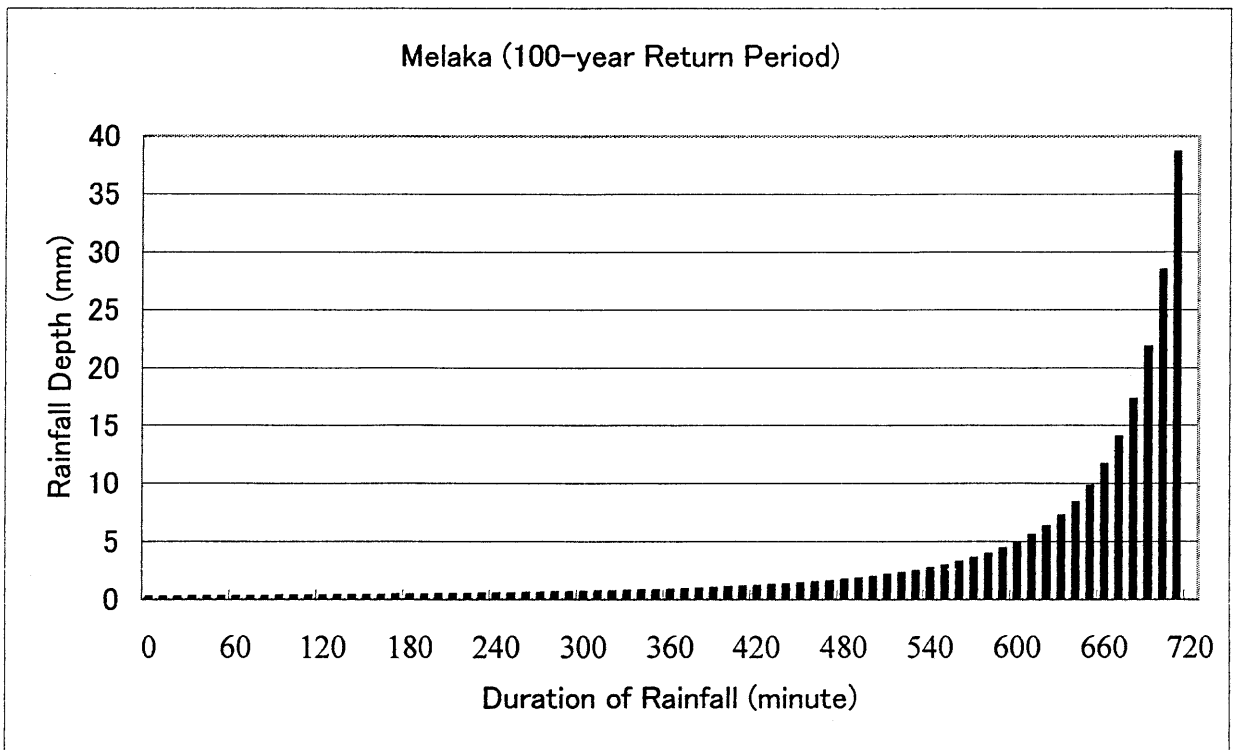
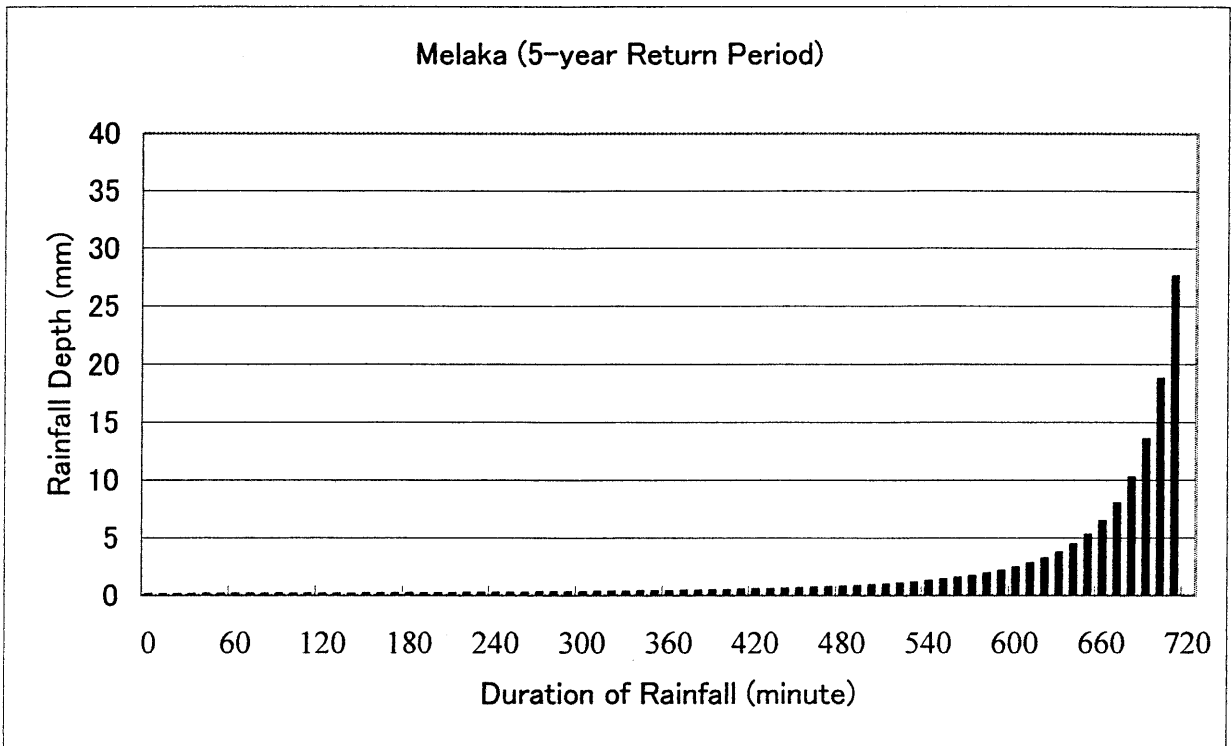
Note : T peak : Duration from bigining of rainfall until occurrence of hourly peak rainfall.
 T total : Entire duration of storm rainfall.

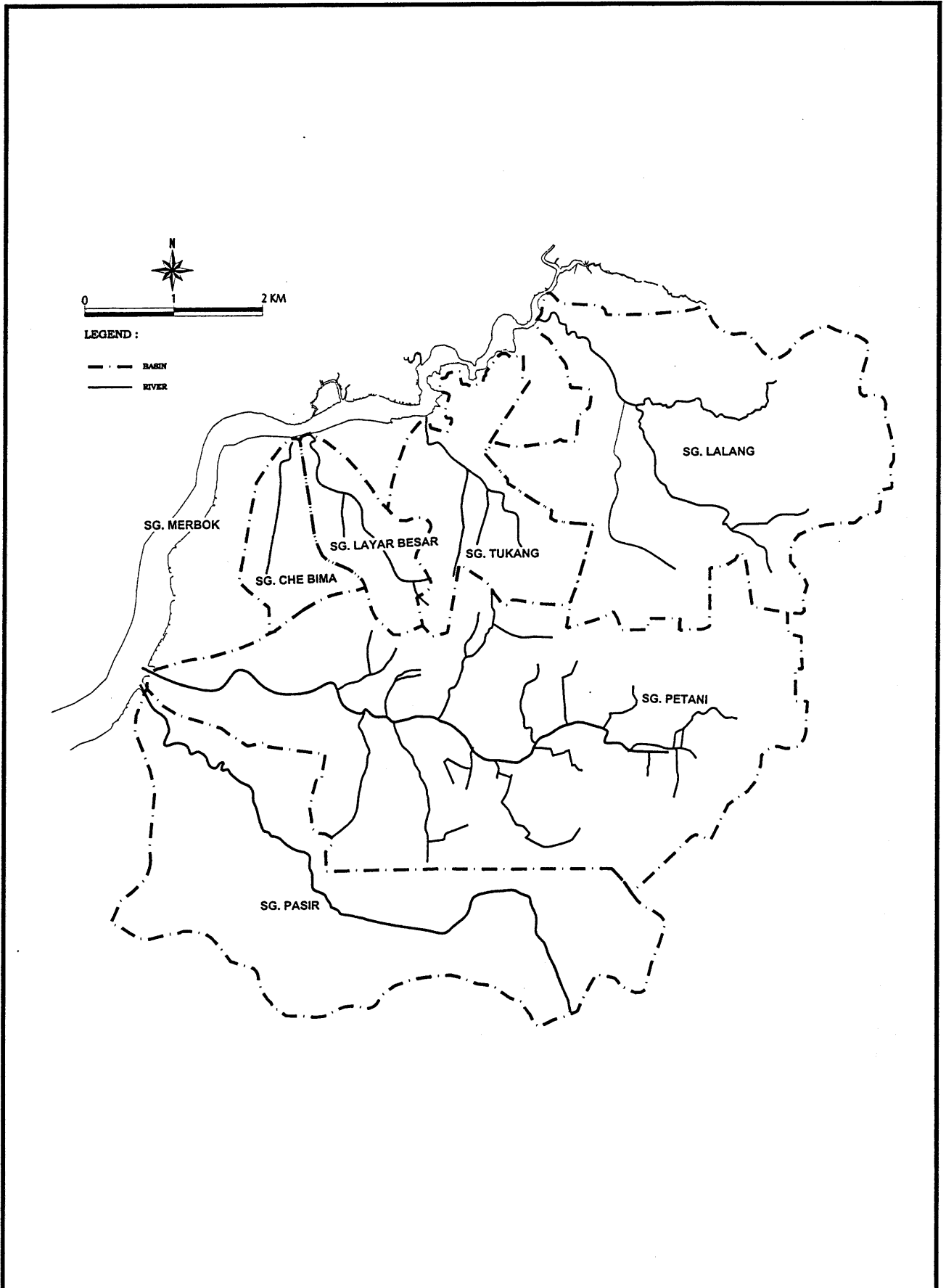
Fig. I-4
Histogram of Peak Rainfall Occurrence
in One Sequential Rainfall



THE STUDY ON
 INTEGRATED URBAN DRAINAGE IMPROVEMENT
 FOR MELAKA AND SUNGAI PETANI IN MALAYSIA
 JAPAN INTERNATIONAL COOPERATION AGENCY

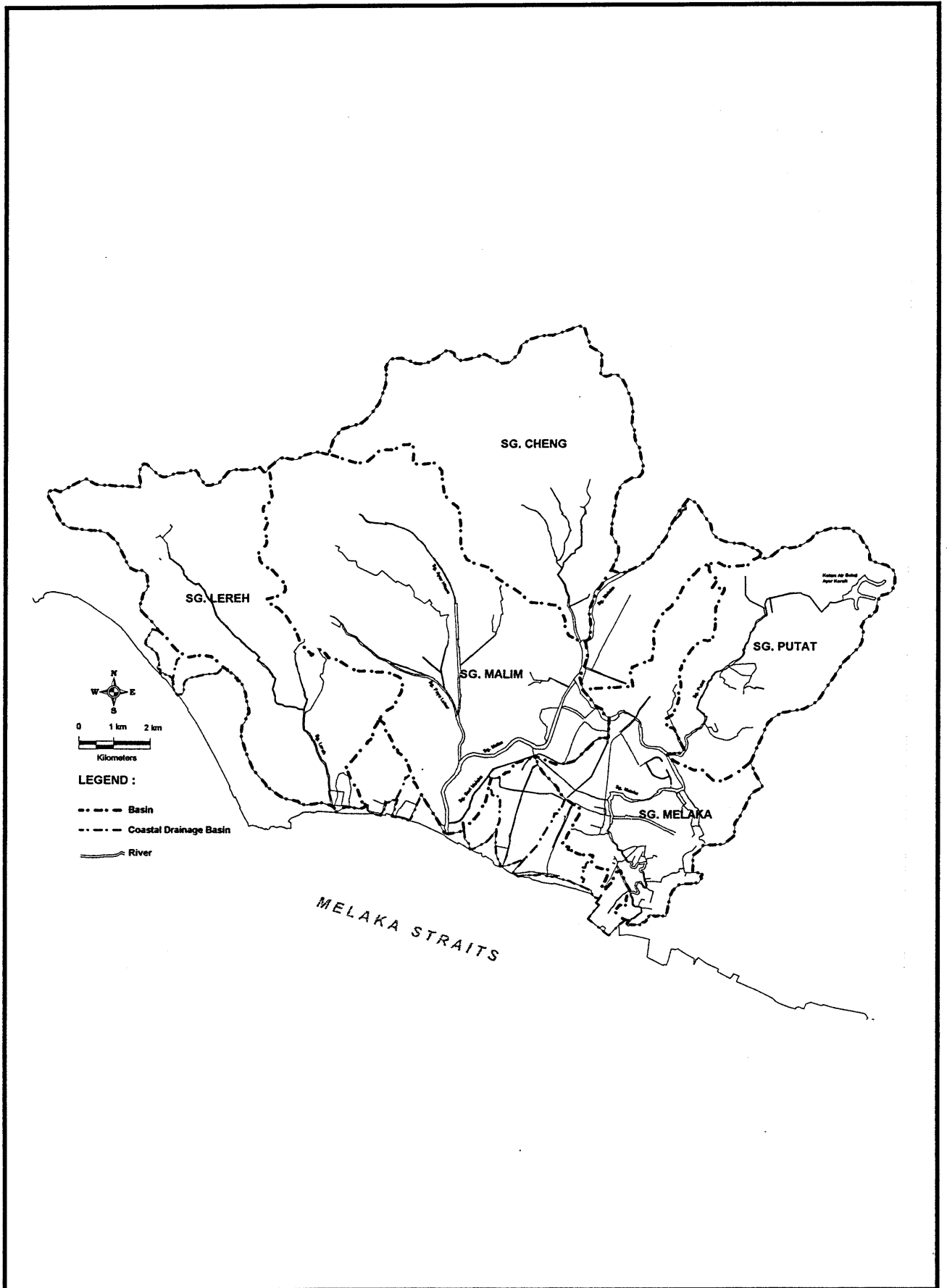
Fig. I-5 (1/2)
Model Hyetograph (Sg. Petani)





THE STUDY ON
 INTEGRATED URBAN DRAINAGE IMPROVEMENT
 FOR MELAKA AND SUNGAI PETANI IN MALAYSIA
 JAPAN INTERNATIONAL COOPERATION AGENCY

Fig. I-6 (1/2)
Division of Study Area into Major
River Basins (Sg. Petani)



THE STUDY ON
 INTEGRATED URBAN DRAINAGE IMPROVEMENT
 FOR MELAKA AND SUNGAI PETANI IN MALAYSIA
 JAPAN INTERNATIONAL COOPERATION AGENCY

Fig. I-6 (2/2)
Division of Study Area into Major
River Basins (Melaka)