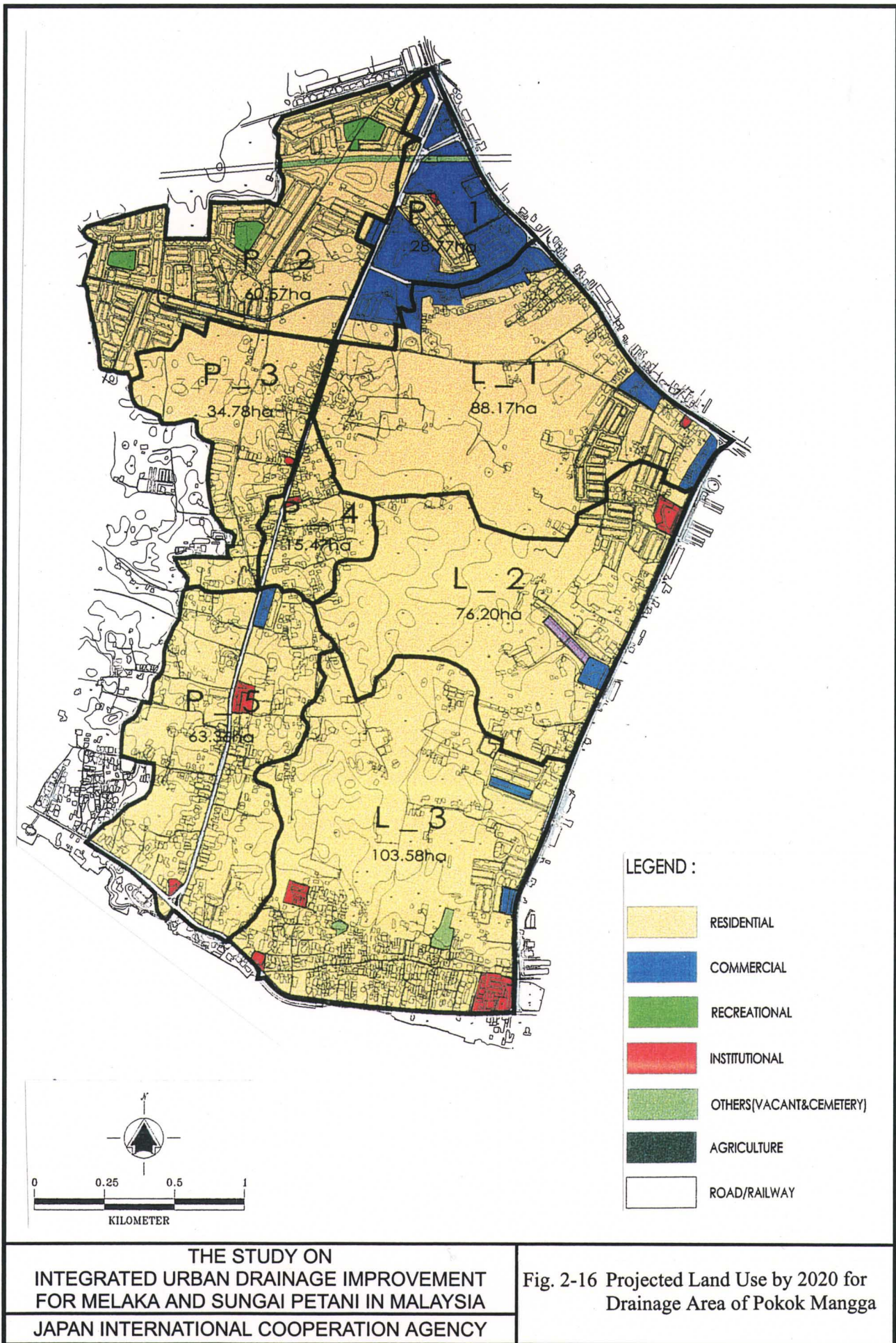


THE STUDY ON
 INTEGRATED URBAN DRAINAGE IMPROVEMENT
 FOR MELAKA AND SUNGAI PETANI IN MALAYSIA
 JAPAN INTERNATIONAL COOPERATION AGENCY

Fig. 2-15 Committed Land Use by 2005 for
 Drainage Area of Pokok Mangga



THE STUDY ON
 INTEGRATED URBAN DRAINAGE IMPROVEMENT
 FOR MELAKA AND SUNGAI PETANI IN MALAYSIA
 JAPAN INTERNATIONAL COOPERATION AGENCY

Fig. 2-16 Projected Land Use by 2020 for
 Drainage Area of Pokok Mangga