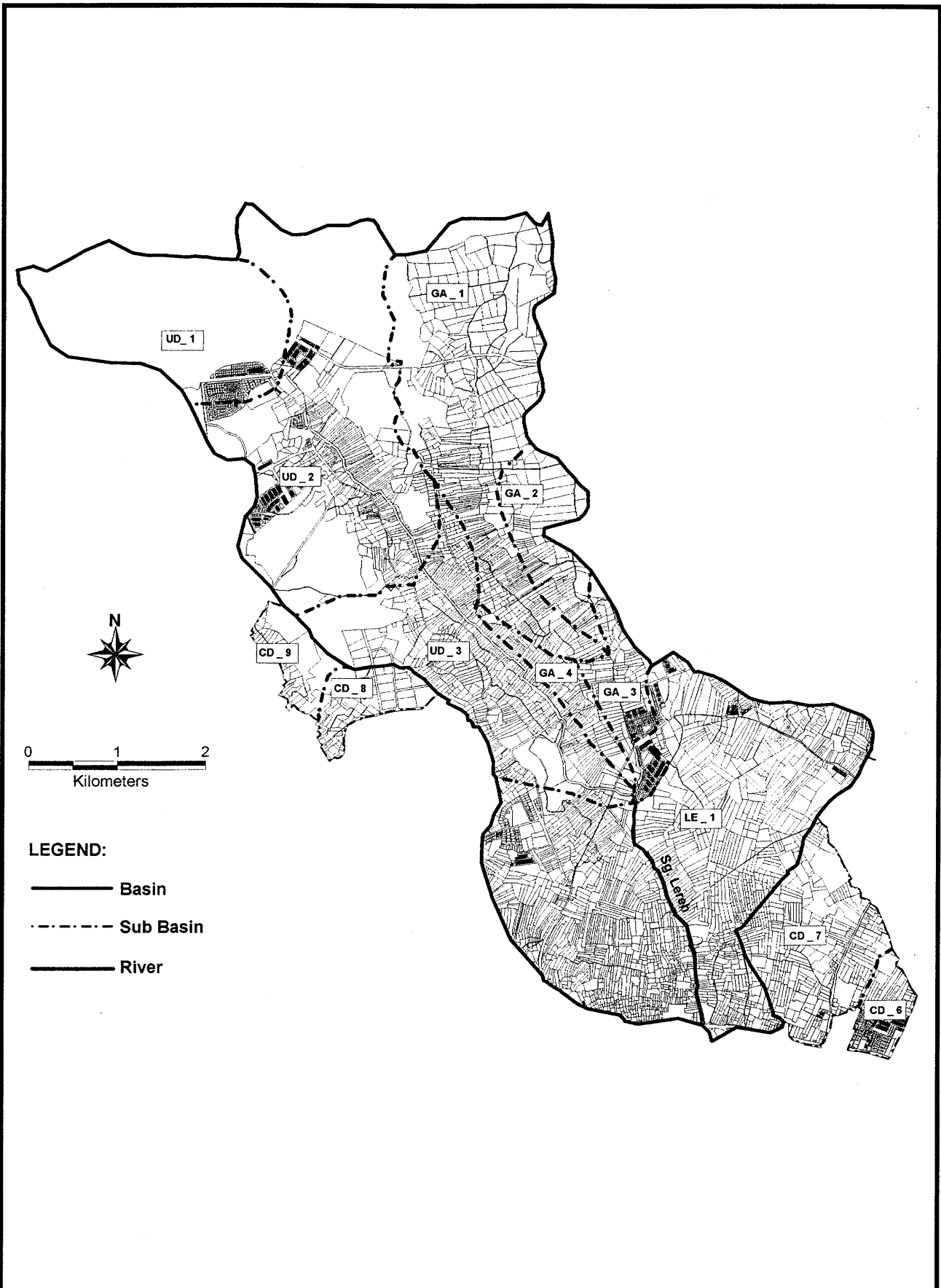


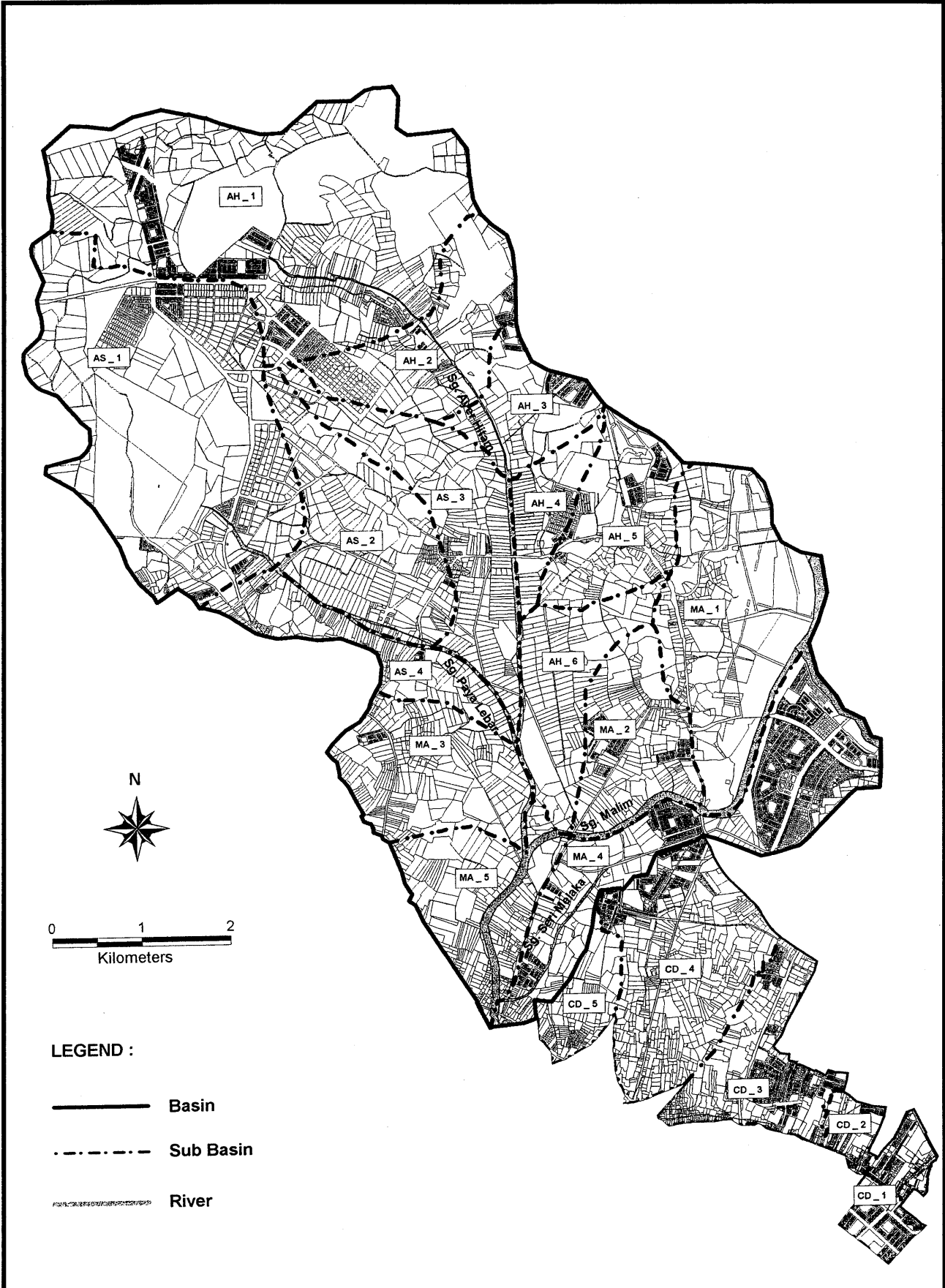
THE STUDY ON  
 INTEGRATED URBAN DRAINAGE IMPROVEMENT  
 FOR MELAKA AND SUNGAI PETANI IN MALAYSIA  
 JAPAN INTERNATIONAL COOPERATION AGENCY

**Fig. 3-6(4/8)**  
**Division of Major River Basin into Sub-**  
**basins (Sg. Pasir)**



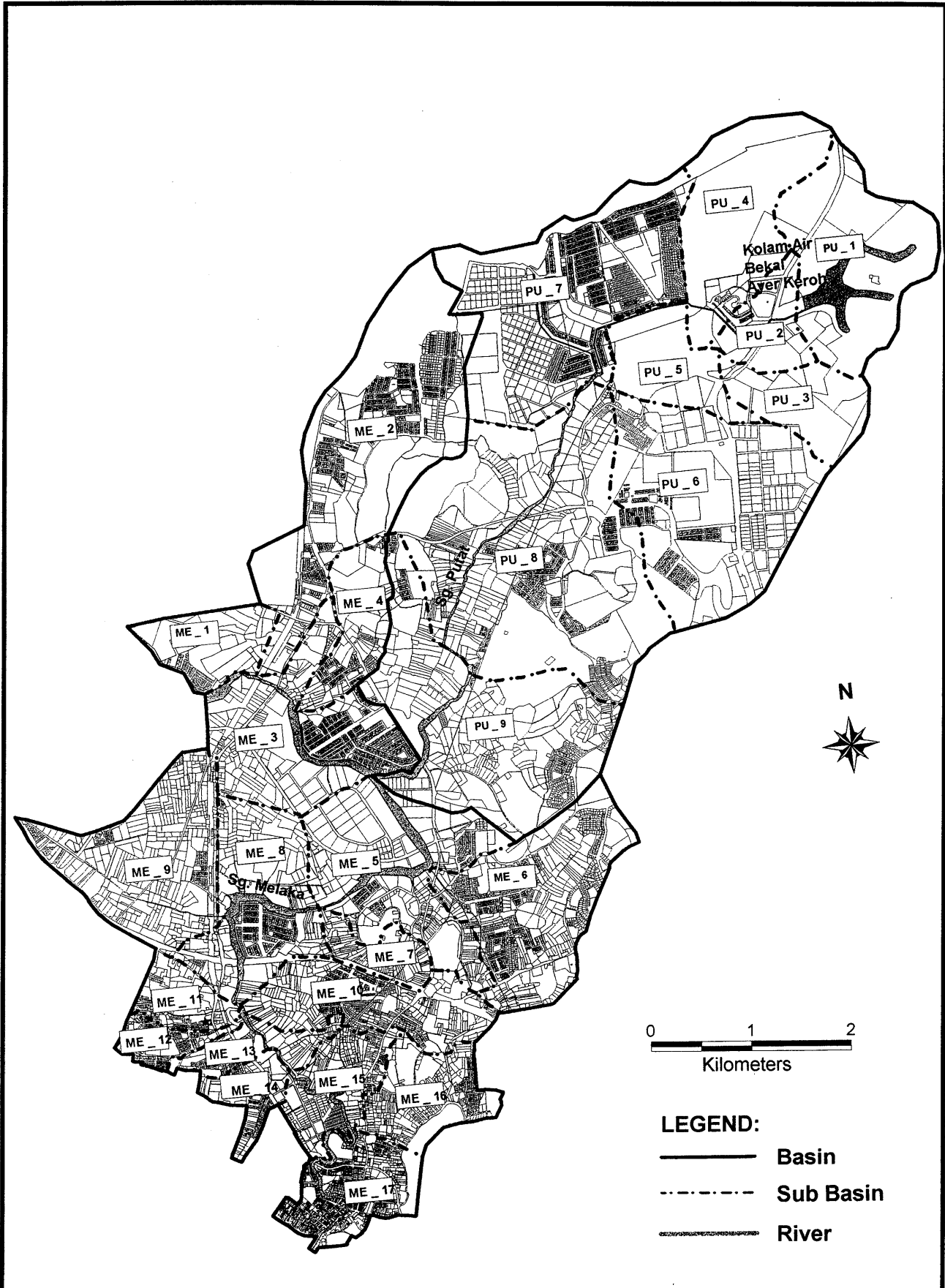
THE STUDY ON  
 INTEGRATED URBAN DRAINAGE IMPROVEMENT  
 FOR MELAKA AND SUNGAI PETANI IN MALAYSIA  
 JAPAN INTERNATIONAL COOPERATION AGENCY

**Fig. 3-6(5/8)**  
**Division of Major River Basin into Sub-basins (Sg. Lereh)**



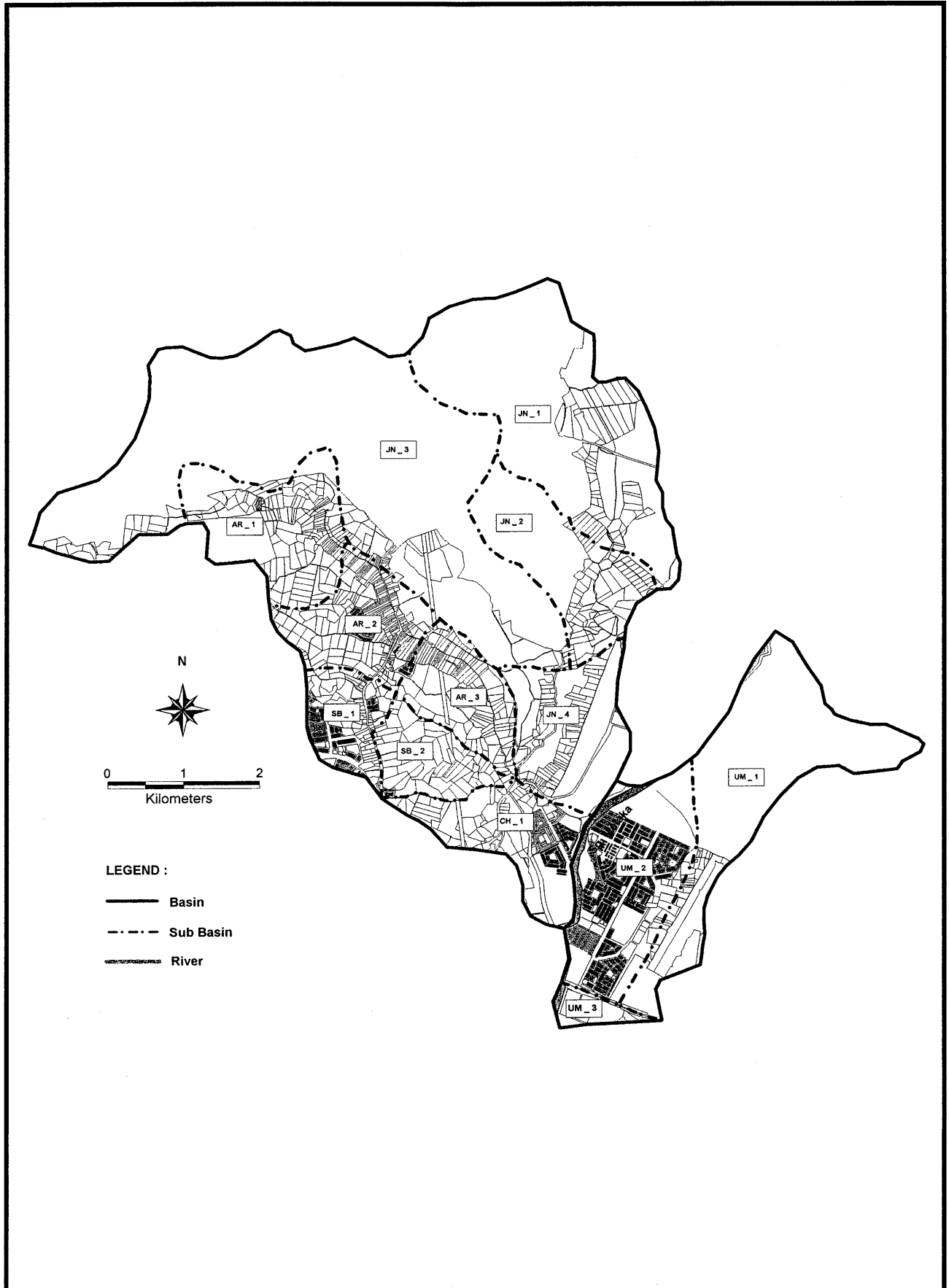
THE STUDY ON  
 INTEGRATED URBAN DRAINAGE IMPROVEMENT  
 FOR MELAKA AND SUNGAI PETANI IN MALAYSIA  
 JAPAN INTERNATIONAL COOPERATION AGENCY

**Fig. 3-6(6/8)**  
**Division of Major River Basin into Sub-basins (Sg. Malim)**



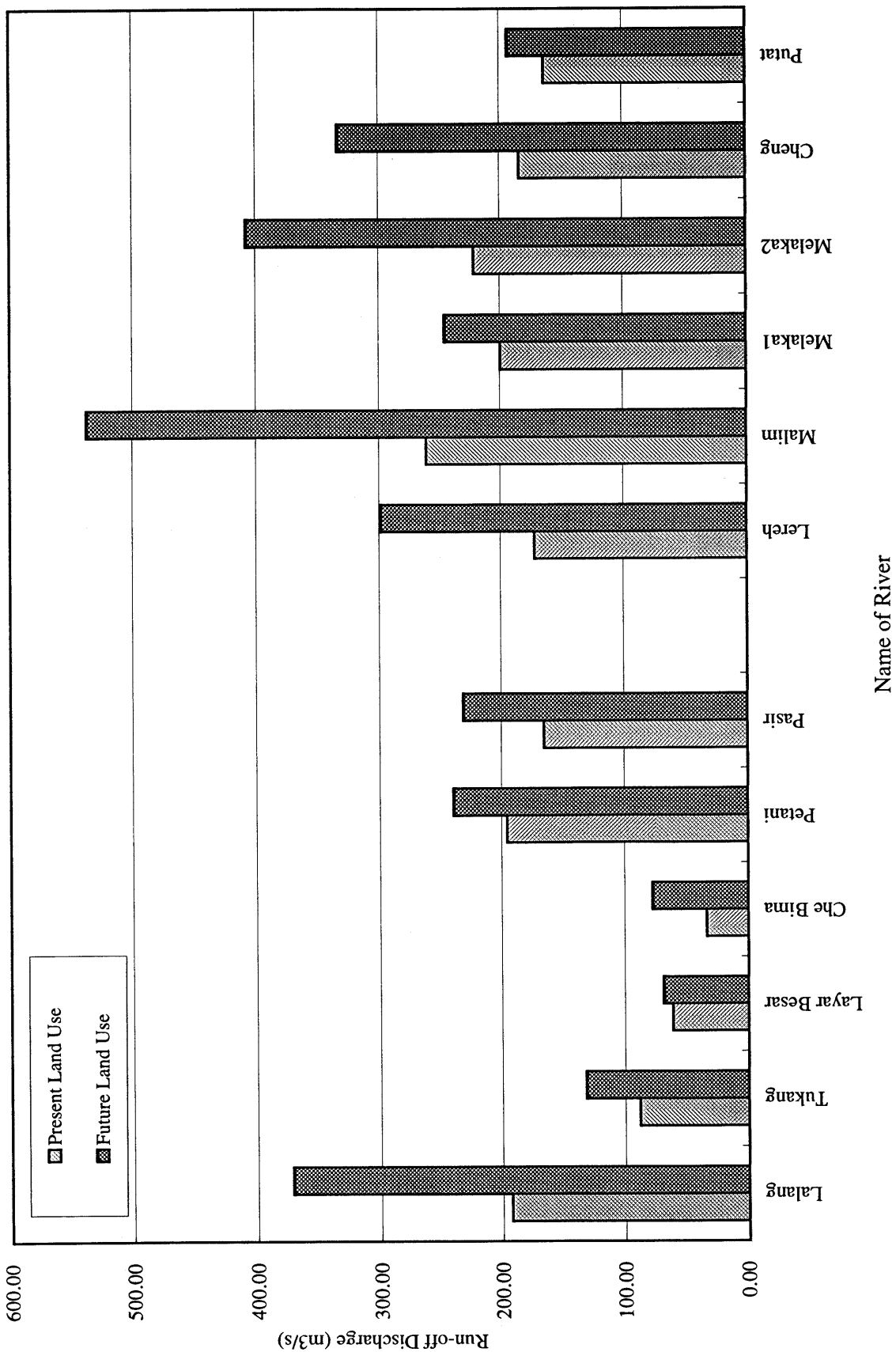
THE STUDY ON  
 INTEGRATED URBAN DRAINAGE IMPROVEMENT  
 FOR MELAKA AND SUNGAI PETANI IN MALAYSIA  
 JAPAN INTERNATIONAL COOPERATION AGENCY

Fig. 3-6(7/8)  
 Division of Major River Basin into Sub-basins (Sg. Melaka)



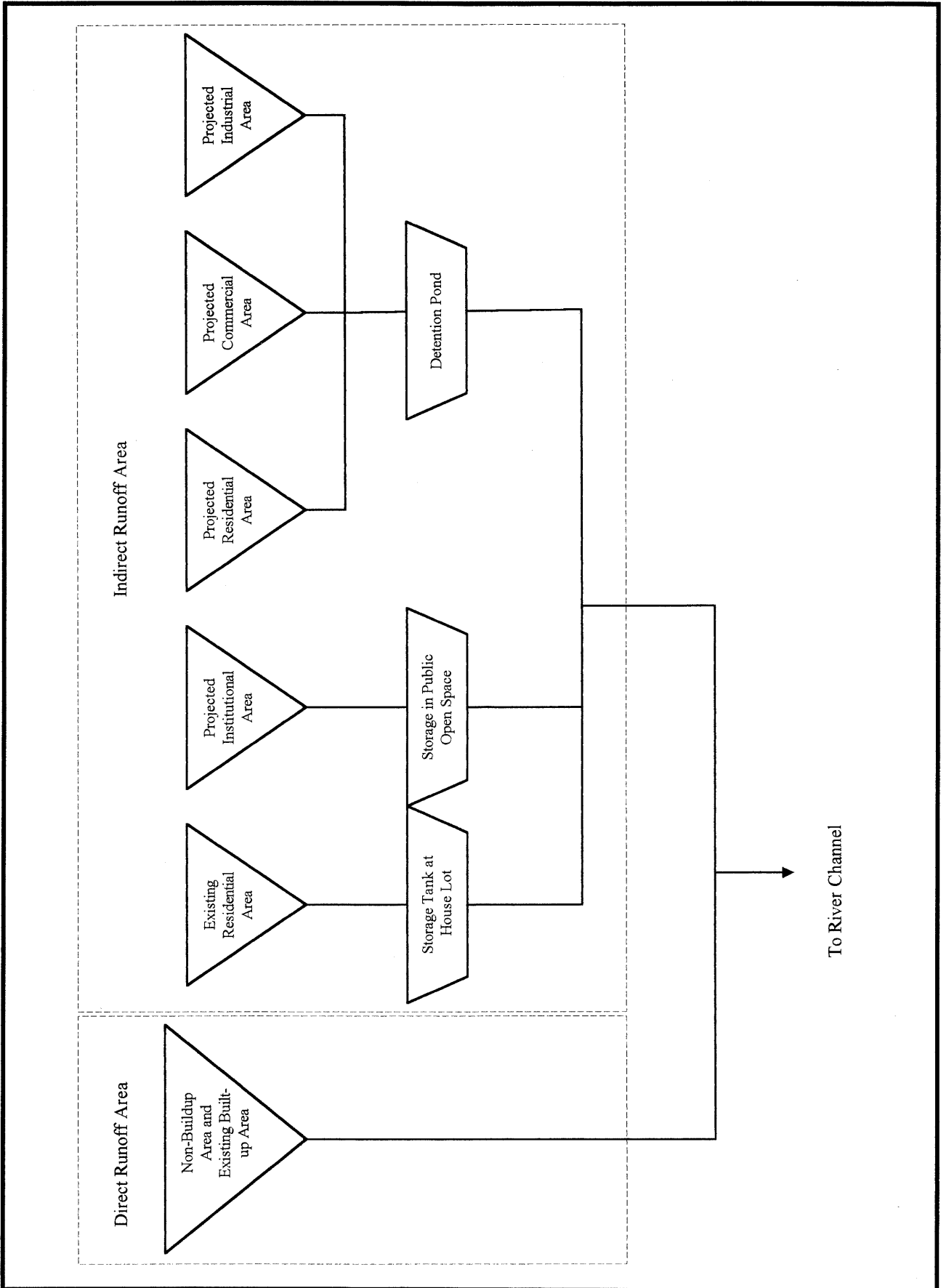
THE STUDY ON  
 INTEGRATED URBAN DRAINAGE IMPROVEMENT  
 FOR MELAKA AND SUNGAI PETANI IN MALAYSIA  
 JAPAN INTERNATIONAL COOPERATION AGENCY

**Fig. 3-6(8/8)**  
**Division of Major River Basin into Sub-**  
**basins (Sg. Cheng)**



THE STUDY ON  
 INTEGRATED URBAN DRAINAGE IMPROVEMENT  
 FOR MELAKA AND SUNGAI PETANI IN MALAYSIA  
 JAPAN INTERNATIONAL COOPERATION AGENCY

**Fig. 3-7**  
 Increment of Probable Discharge at the  
 Down-most Point of River Channel  
 from Present to Future (Year 2020)



THE STUDY ON  
 INTEGRATED URBAN DRAINAGE IMPROVEMENT  
 FOR MELAKA AND SUNGAI PETANI IN MALAYSIA  
 JAPAN INTERNATIONAL COOPERATION AGENCY

**Fig. 3-8**  
**Application of Basin Flood Detention Facility to Runoff Simulation Model**