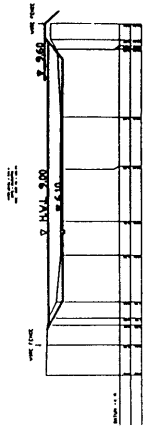
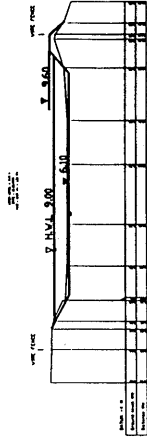


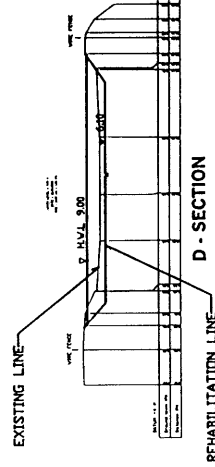
CROSS - SECTIONS



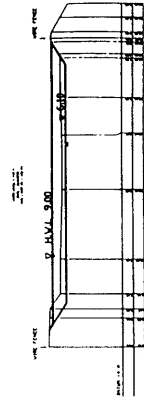
B - SECTION



C - SECTION

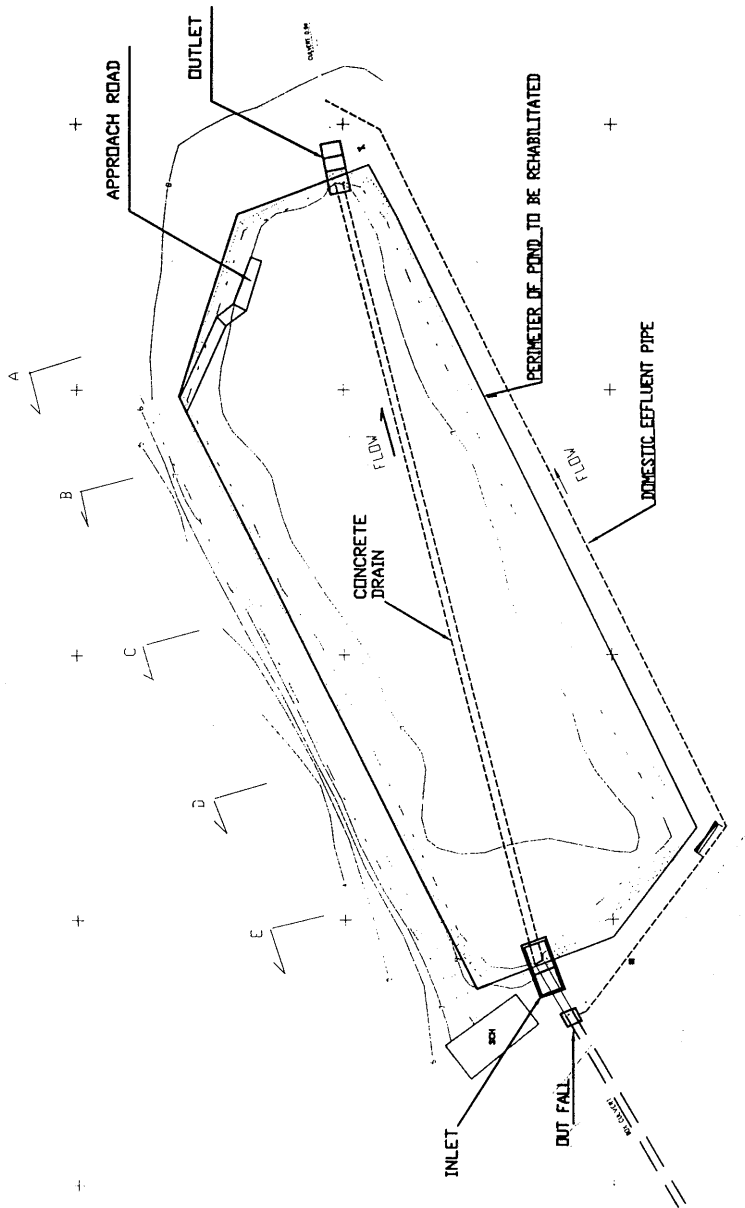


D - SECTION



E - SECTION

PLAN OF POND (TAMAN SRI WANG, SUNGAI PETANI)

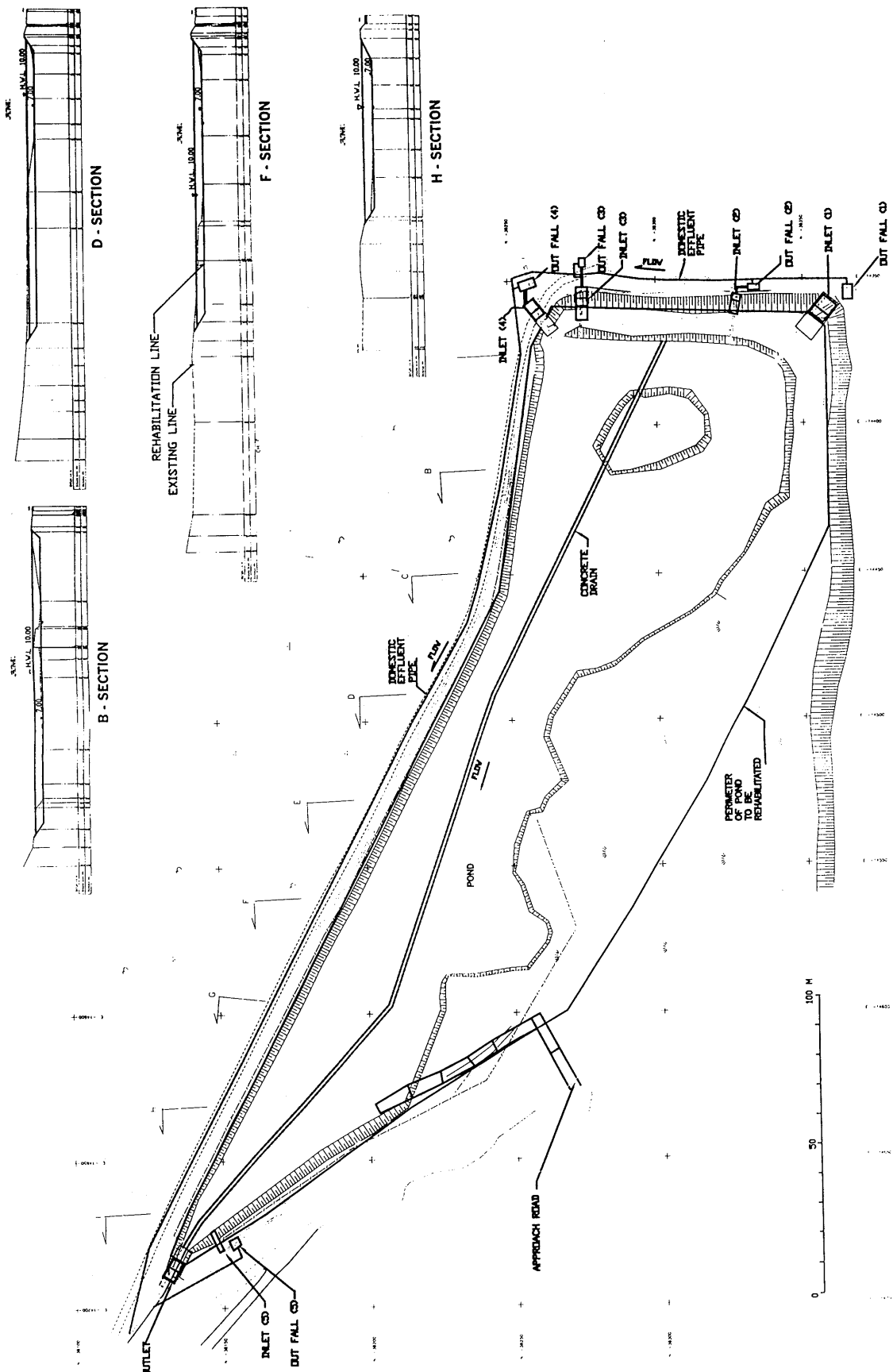


THE STUDY ON
INTEGRATED URBAN DRAINAGE IMPROVEMENT
FOR MELAKA AND SUNGAI PETANI IN MALAYSIA
JAPAN INTERNATIONAL COOPERATION AGENCY

Fig.3-19
Rehabilitation of Existing Detention Pond
at Taman Sri Wang (Sg. Petani)

CROSS - SECTIONS

PLAN OF POND (TAMAN KELADI, SUNGAI PETANI)

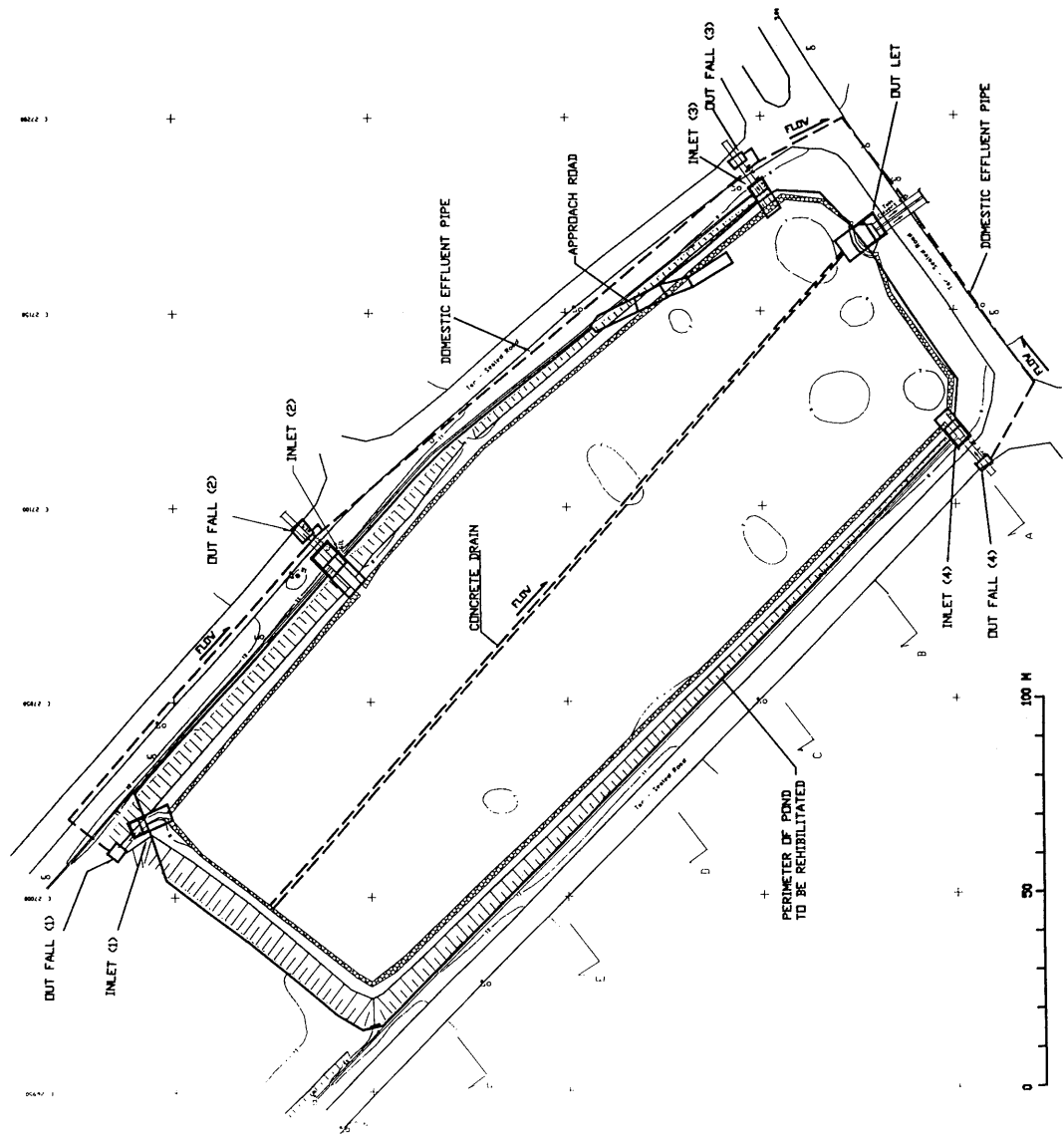
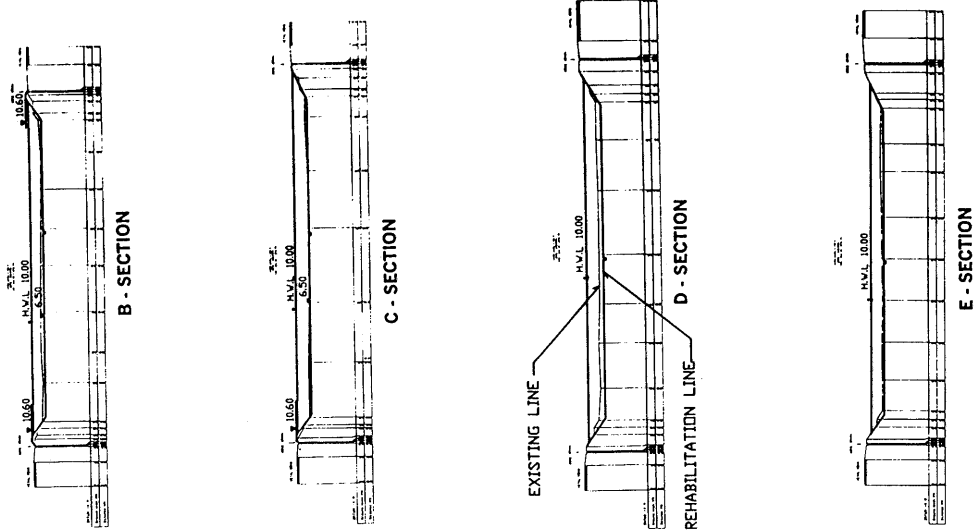


THE STUDY ON
 INTEGRATED URBAN DRAINAGE IMPROVEMENT
 FOR MELAKA AND SUNGAI PETANI IN MALAYSIA
 JAPAN INTERNATIONAL COOPERATION AGENCY

Fig.3-20
 Rehabilitation of Existing Detention Pond
 at Taman Keladi (Sg. Petani)

PLAN OF POND (KAWASAN INDUSTRI BUKIT RAMBAI, MELAKA)

CROSS - SECTIONS

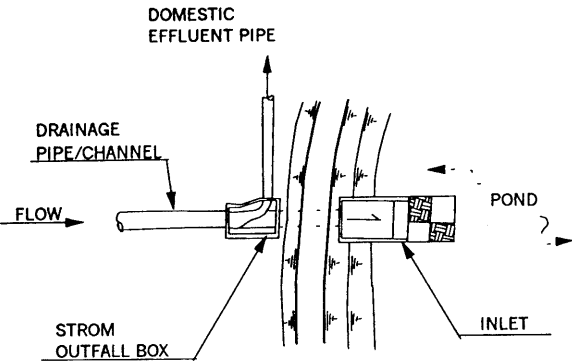


THE STUDY ON
 INTEGRATED URBAN DRAINAGE IMPROVEMENT
 FOR MELAKA AND SUNGAI PETANI IN MALAYSIA
 JAPAN INTERNATIONAL COOPERATION AGENCY

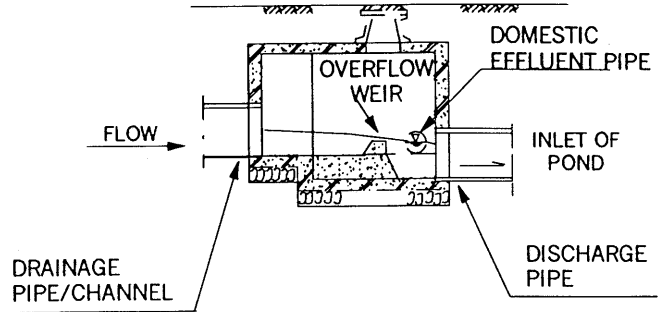
Fig.3-21
 Rehabilitation of Existing Detention Pond
 at Kawasan Industri Bukit Rambai
 (Melaka)

STORM OUTFALL BOX

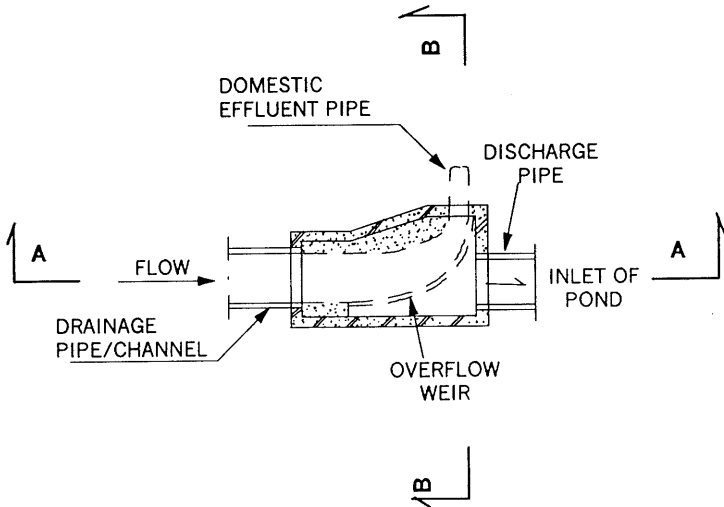
GENERAL PLAN



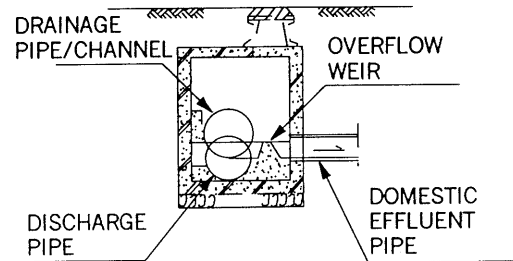
A - A SECTION



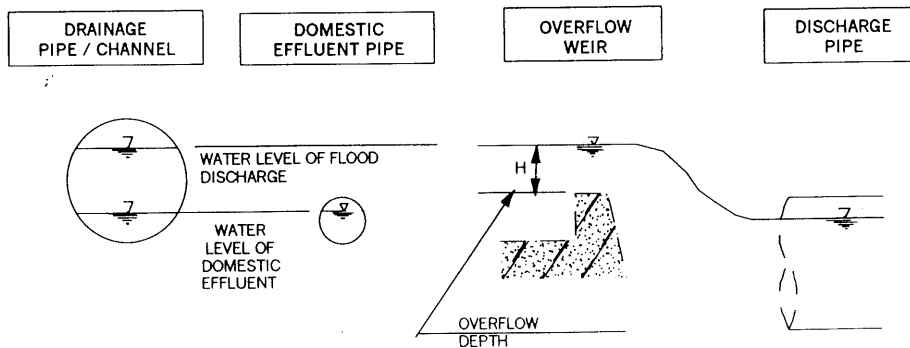
PLAN OF STORM OUTFALL BOX



B - B SECTION



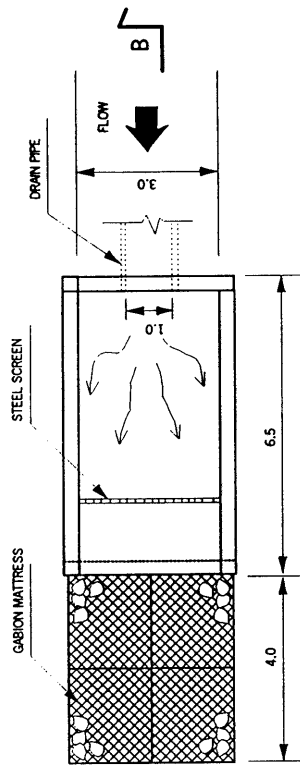
STRUCTURAL CONDITION OF STORM OUTFALL



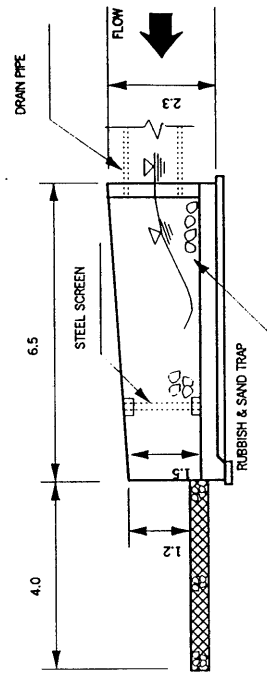
THE STUDY ON
 INTEGRATED URBAN DRAINAGE IMPROVEMENT
 FOR MELAKA AND SUNGAI PETANI IN MALAYSIA
 JAPAN INTERNATIONAL COOPERATION AGENCY

Fig.3-22
 Outline of Storm Outfall Structure

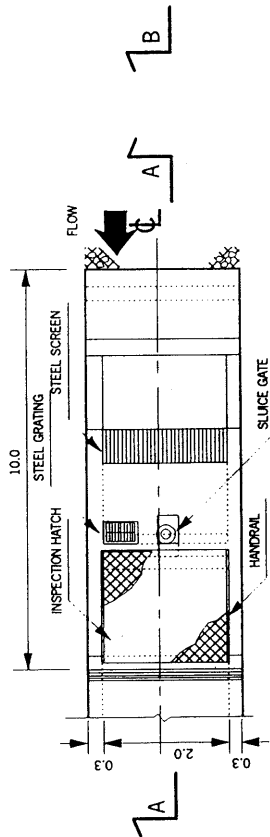
PLAN OF INLET STRUCTURE



B - B SECTION



PLAN OF OUTLET STRUCTURE



A - A SECTION

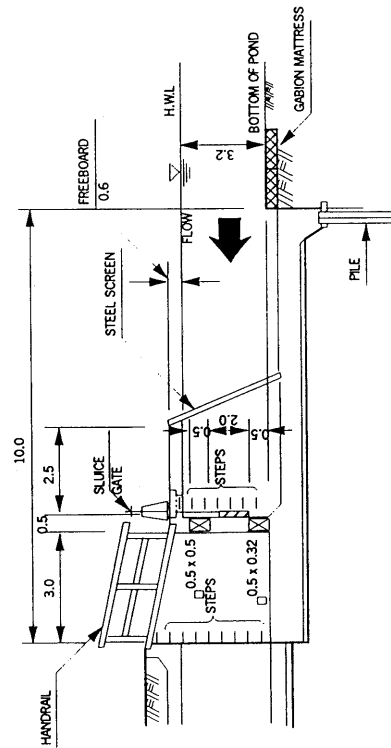


Fig.3-23
 Typical In/Outlets Structure for Detention Pond