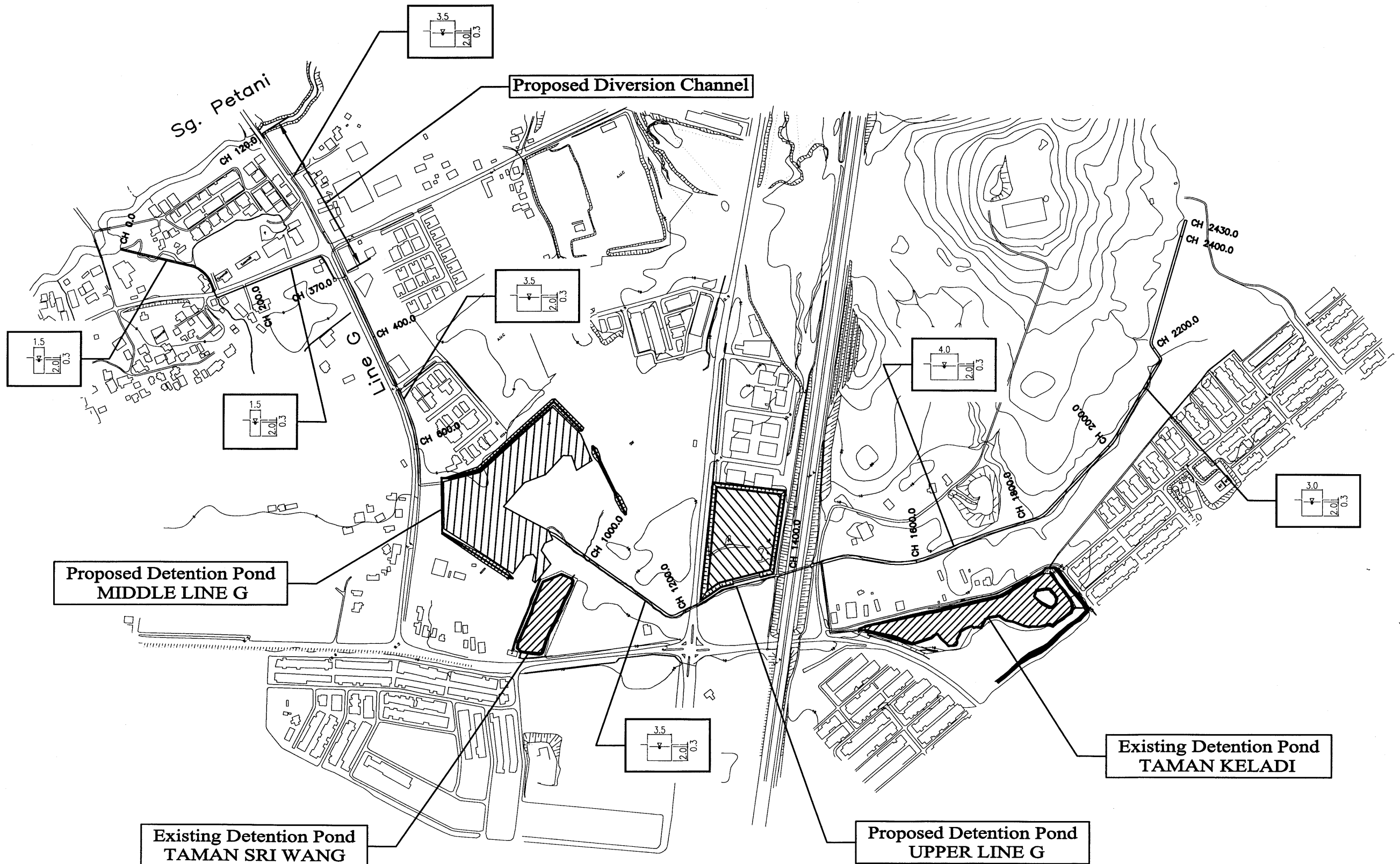


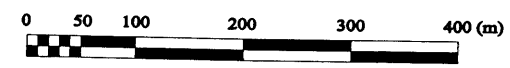
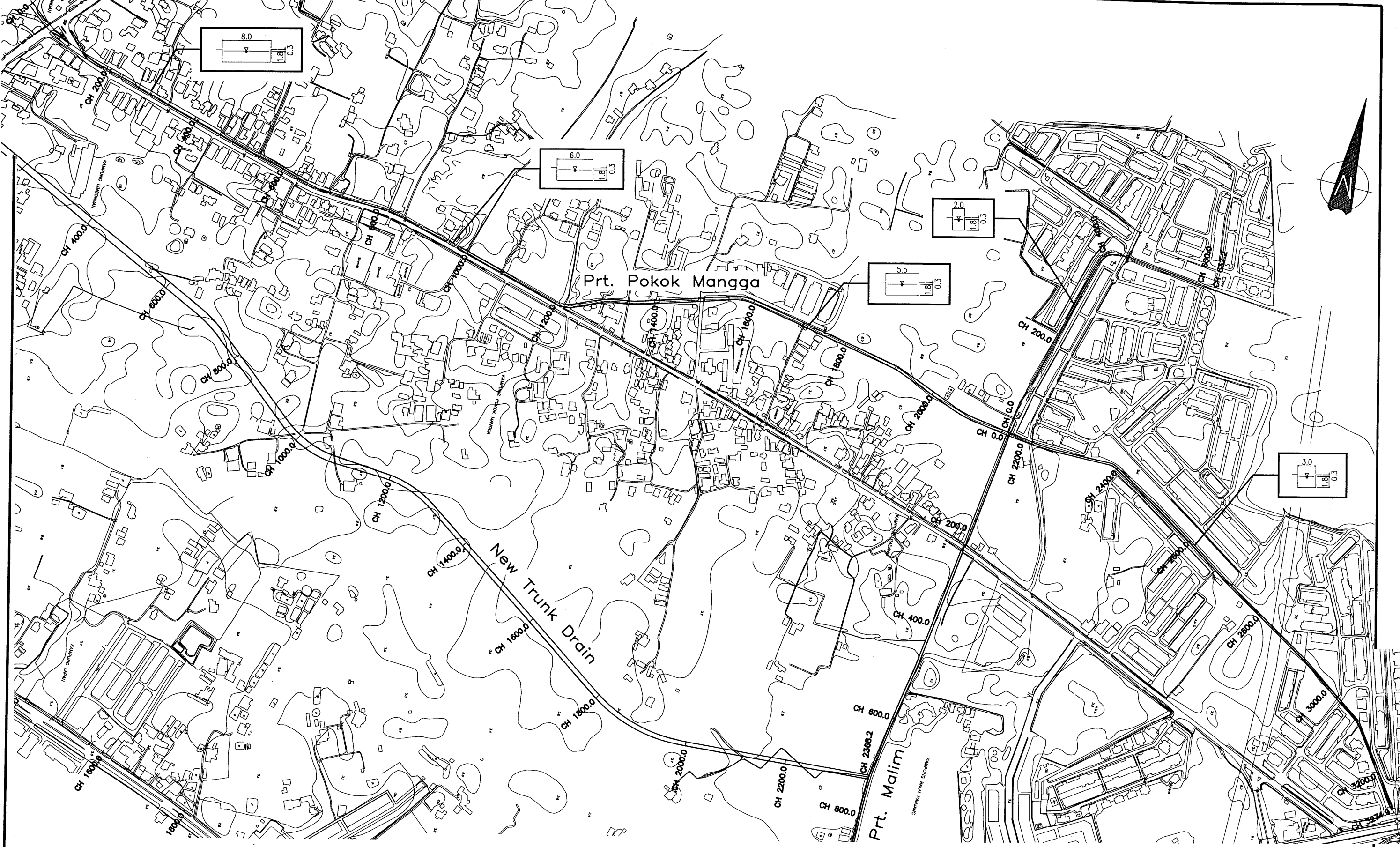
THE STUDY ON
 INTEGRATED URBAN DRAINAGE IMPROVEMENT
 FOR MELAKA AND SUNGAI PETANI IN MALAYSIA
 JAPAN INTERNATIONAL COOPERATION AGENCY

図 3-18 (1/6)
 計画水路改修法線及び標準断面
 (アイル・メンディディ川排水区域)



THE STUDY ON
 INTEGRATED URBAN DRAINAGE IMPROVEMENT
 FOR MELAKA AND SUNGAI PETANI IN MALAYSIA
 JAPAN INTERNATIONAL COOPERATION AGENCY

図 3-18 (2/6)
 計画水路改修法線及び標準断面
 (ライン G 排水区域)



THE STUDY ON
 INTEGRATED URBAN DRAINAGE IMPROVEMENT
 FOR MELAKA AND SUNGAI PETANI IN MALAYSIA
 JAPAN INTERNATIONAL COOPERATION AGENCY

図 3-18 (3/6)
 計画水路改修法線及び標準断面
 (ポコ・マンガ排水区域上流部)