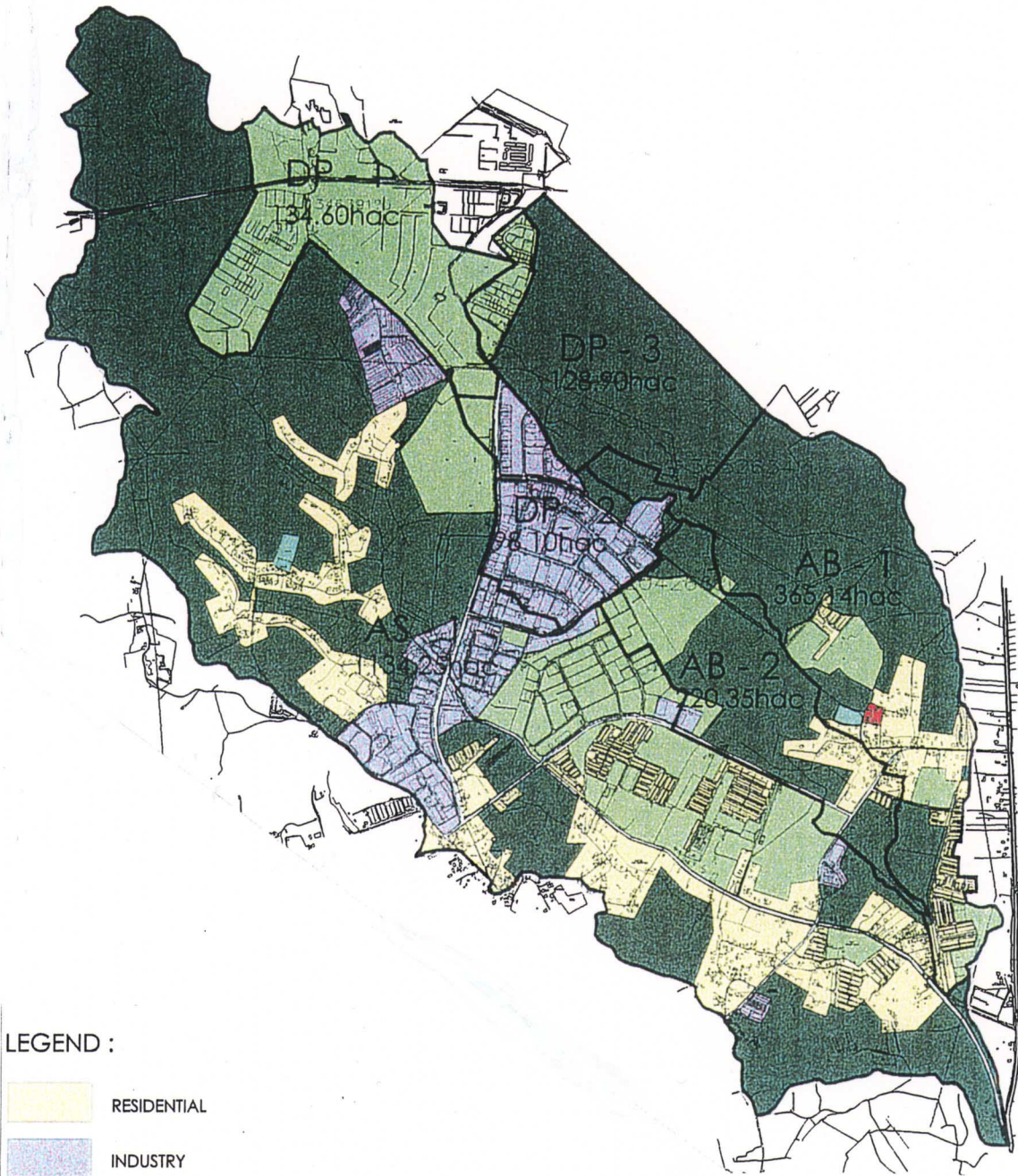


THE STUDY ON  
 INTEGRATED URBAN DRAINAGE IMPROVEMENT  
 FOR MELAKA AND SUNGAI PETANI IN MALAYSIA  
 JAPAN INTERNATIONAL COOPERATION AGENCY

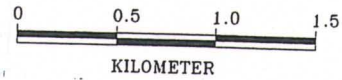
図 3-6  
 ポコ・マンガ排水区域の 2020 年時点の  
 土地利用予測結果





LEGEND :

- RESIDENTIAL
- INDUSTRY
- RECREATIONAL
- INSTITUTIONAL
- OTHERS(VACANT&CEMETERY)
- AGRICULTURE
- ROAD/RAILWAY



THE STUDY ON  
 INTEGRATED URBAN DRAINAGE IMPROVEMENT  
 FOR MELAKA AND SUNGAI PETANI IN MALAYSIA  
 JAPAN INTERNATIONAL COOPERATION AGENCY

図 3-7  
 アイル・サラック川排水区域の  
 現況土地利用