



Plate 11. Joya del Sol district : Boiling texture of the Galadriel quartz vein.

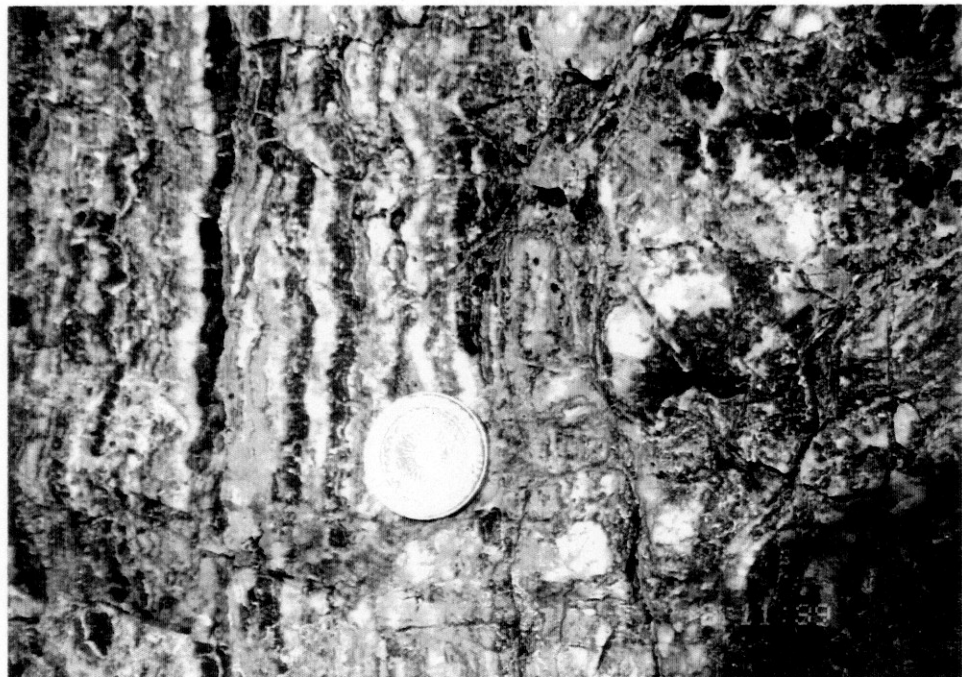


Plate 12. Joya del Sol district : Fine banding of black and white quartz of the Elena Sur vein.



Plate 13. Cerro Gonzalo district : Breccia pipe with malachite mineralization.



Plate 14. Arroyo Cascada district : Not so inclined quartz veins.
A sample revealed 4.07g/t Au content.



Plate 15. Estrella Gaucha district : Old quarry of kaolin exploitation.



Plate 16. Cerro Blanco district : Sinter-like silicified rock
in the alteration zone.



Plate 17. Ferrocarrilera district : View of Lago Fontana
from the mineralized site.

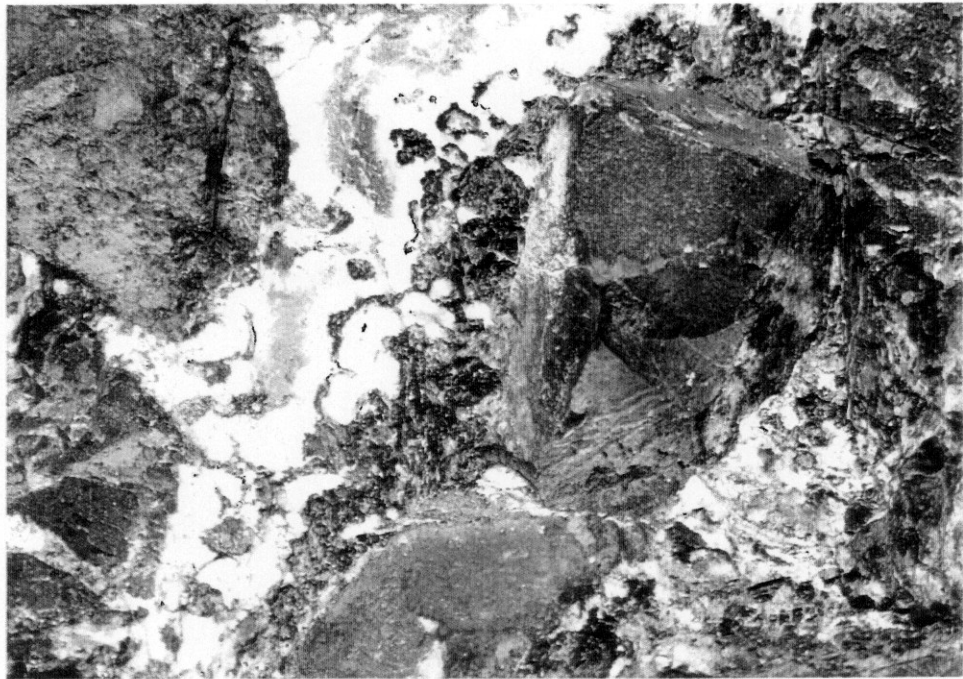


Plate 18. Ferrocarrilera district : Quartz vein with disseminated sphalerite.
Rock fragment in the vein shows propylitic green color.