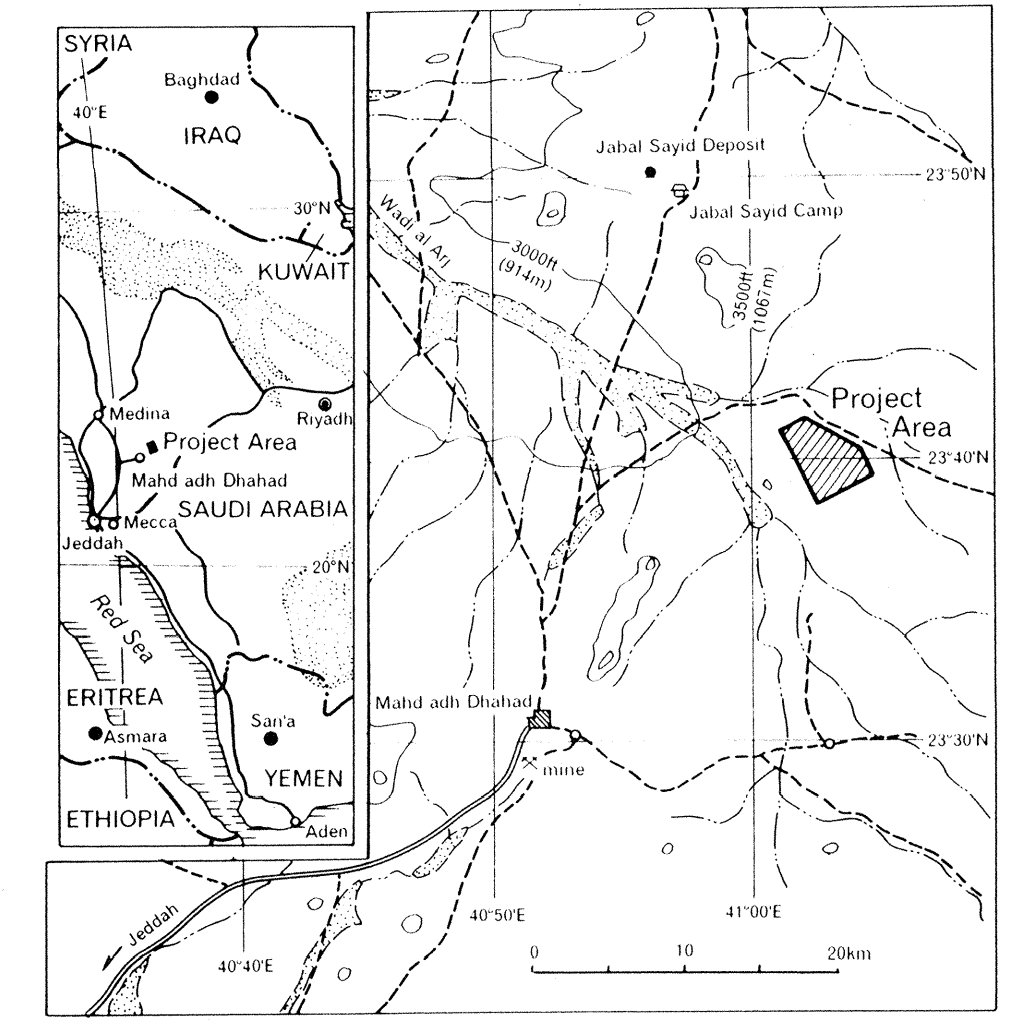
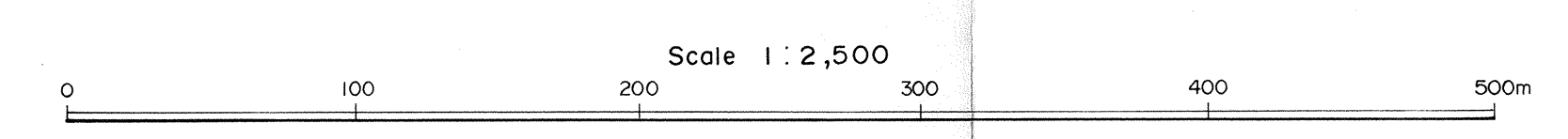
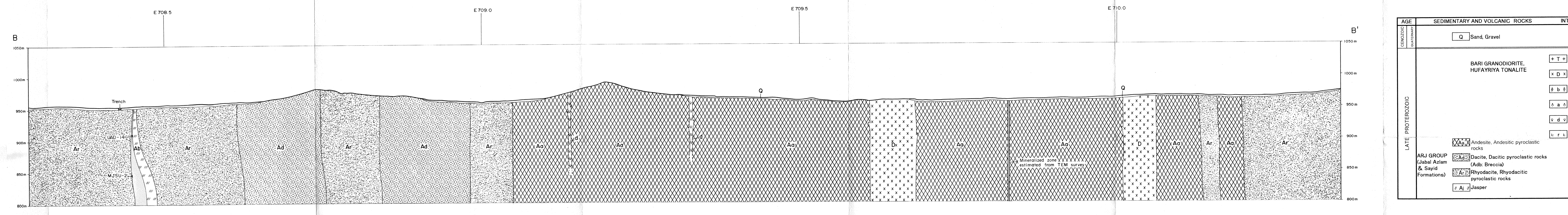
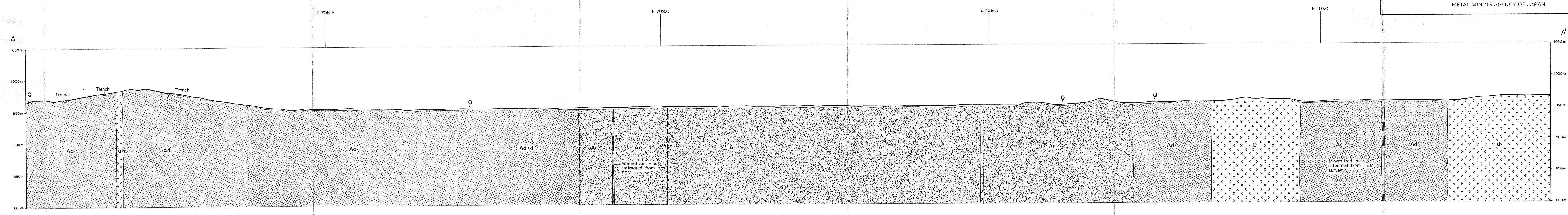


REPORT ON THE COOPERATIVE MINERAL EXPLORATION  
IN THE UMM AD DAMAR AREA  
THE KINGDOM OF SAUDI ARABIA  
PHASE II

GEOLOGICAL SECTIONS OF AREA B



MARCH 2000  
JAPAN INTERNATIONAL COOPERATION AGENCY  
METAL MINING AGENCY OF JAPAN

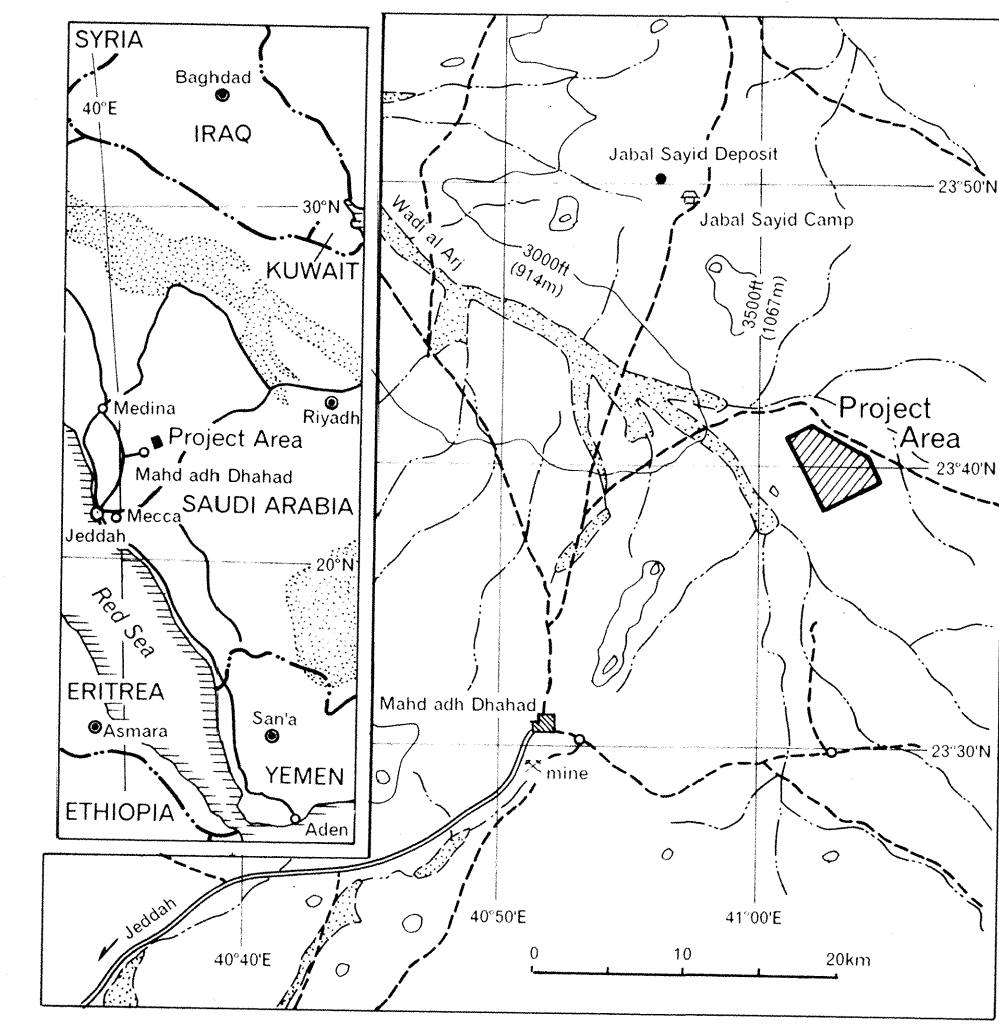


AGE	SEDIMENTARY AND VOLCANIC ROCKS	INTRUSIVE ROCKS
QUATERNARY	Q Sand, Gravel	
LATE PROTEROZOIC	BARI GRANODIORITE, HUFAYRIYA TONALITE	T Tonalite
		D Quartz diorite, Diorite
		b s Basalt, Porphyritic basalt
		a a Andesite, Porphyritic andesite
		d d Dacite, Porphyritic dacite
		r r Rhyodacite
		Andesite, Andesitic pyroclastic rocks
		Dacite, Dacitic pyroclastic rocks
		(Ab: Breccia) Rhyodacite, Rhyodacitic pyroclastic rocks
		Ai Jasper

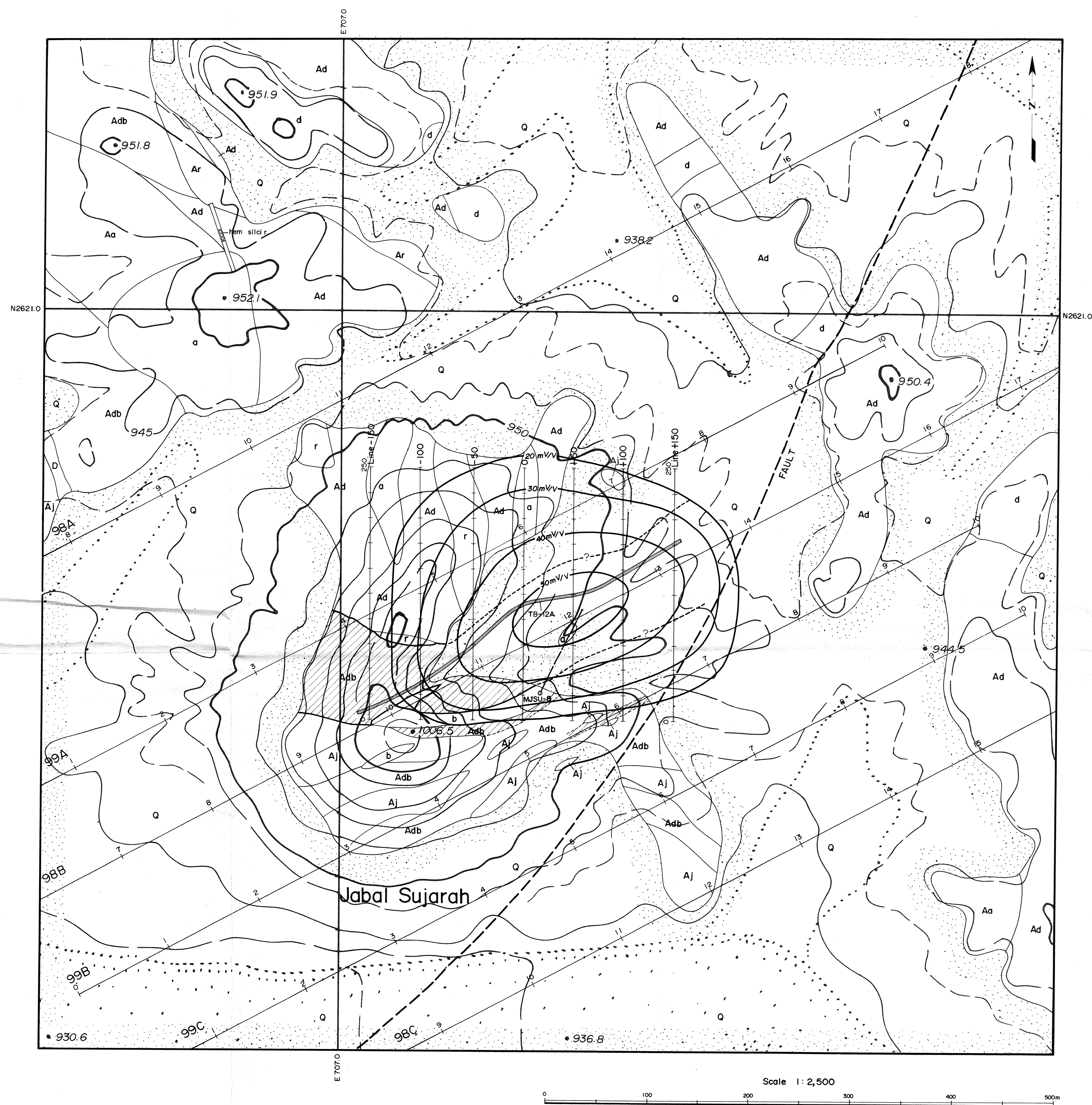


REPORT ON THE COOPERATIVE MINERAL EXPLORATION  
IN THE UMM AD DAMAR AREA  
THE KINGDOM OF SAUDI ARABIA  
PHASE II

INTEGRATED INTERPRETATION MAP OF  
AREA A (JABAL SUJARAH)



MARCH 2000  
JAPAN INTERNATIONAL COOPERATION AGENCY  
METAL MINING AGENCY OF JAPAN



AGE	SEDIMENTARY AND VOLCANIC ROCKS	INTRUSIVE ROCKS
GENOZOIC QUATERNARY	Q Sand, Gravel	
LATE PROTEROZOIC		D Diorite
		b Porphyritic basalt
		a Porphyritic andesite
		d Porphyritic dacite
		r Rhyodacite
	Aa Andesite, Andesitic pyroclastic rocks	
	ARJ GROUP (Jabal Azlam & Sayid Formations)	Ad Dacite, Dacitic pyroclastic rocks (Adb: Breccia)
	Aj Jasper	

- Plate structure estimated from TEM survey
- Chargeability at 800m above sea level
- Carbonatized breccia distribution zone
- TEM survey line
- IP survey line