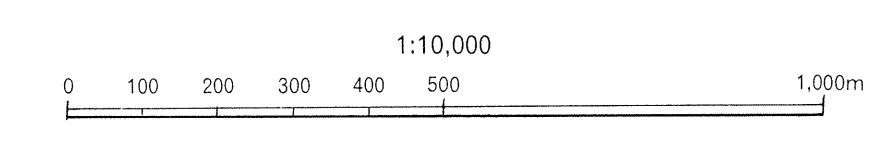
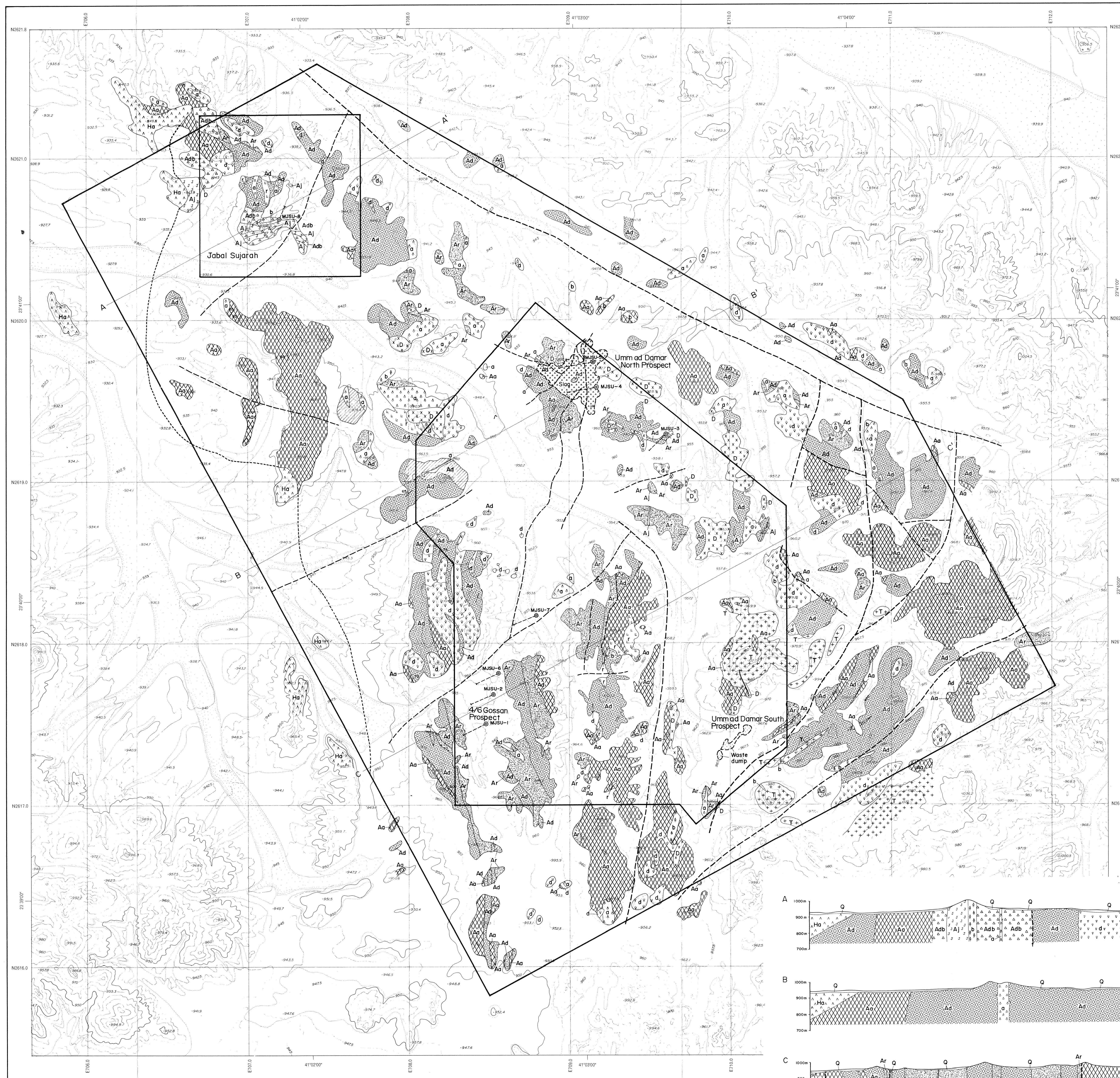


# Umm ad Damar Area



PL.1

REPORT ON THE COOPERATIVE MINERAL EXPLORATION  
IN THE UMM AD DAMAR AREA  
THE KINGDOM OF SAUDI ARABIA  
PHASE II

GEOLOGICAL MAP OF THE SURVEY AREA (1:10,000)

MARCH 2000  
JAPAN INTERNATIONAL COOPERATION AGENCY  
METAL MINING AGENCY OF JAPAN

AGE	SEDIMENTARY AND VOLCANIC ROCKS	INTRUSIVE ROCKS
CENOZOIC (Quaternary)	Q Sand, Gravel	
	MAHD GROUP (Hal Formation) H <sub>1</sub> x Andesite, Andesitic pyroclastic rocks, Conglomerate	
LATE PROTEROZOIC	BARI GRANODIORITE, HUFAYRIYA TONALITE	+ T + Tonalite
		x D x Quartz diorite, Diorite
		b b Basalt, Porphyritic basalt
		a a Andesite, Porphyritic andesite
		v d v Dacite, Porphyritic dacite
		l r l Rhyodacite
ARJ GROUP (Jabal Aram & Sayid Formations)	Aa Andesite, Andesitic pyroclastic rocks	
	Ad Dacite, Dacitic pyroclastic rocks (Adb: Breccia)	
	r Rhyodacite, Rhyodacitic pyroclastic rocks	
	J A Jasper	

- Sulfidation
- Fault
- Drill Hole (phase II)
- Geological Survey Area (phase I)
- Detailed Geological Survey Area (phase II)

