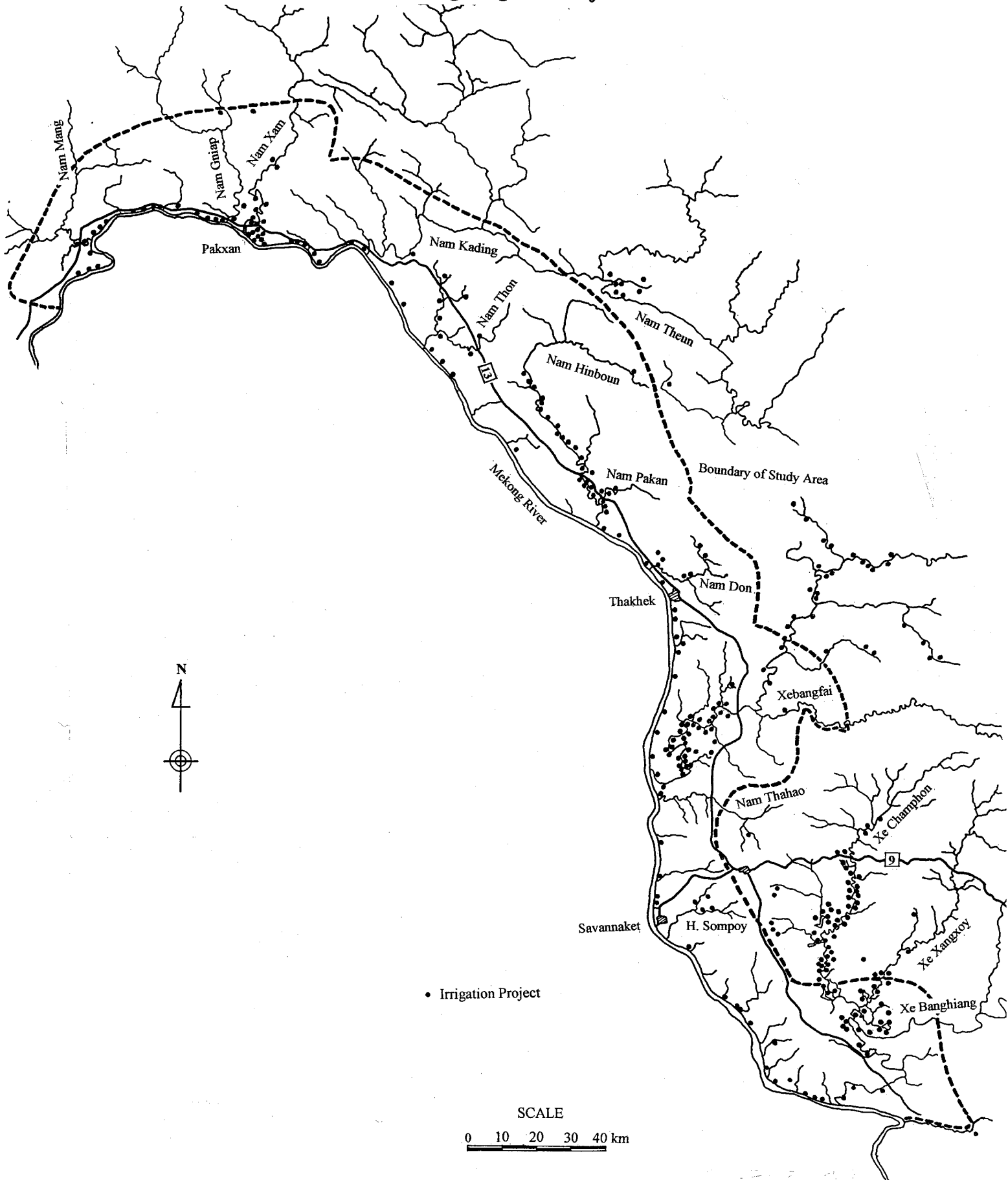


G.2. Existing Irrigation Project

G.2.1. Location of Existing Irrigation Project



Location of Existing Irrigation Project

G.2.2. List of Existing Irrigation Project in the Study Area
Existing Irrigation Project in the Study Area -Bolikhamsai Province-

No.	Name of Project	Type of Project	Location of Project		Planned Irrigated Area		Actual Irrigated Area		Year of Construction	Year of Completion	Cost (Thousand kip)	Donor	Remarks
			River	Village	Wet season (ha)	Dry season (ha)	Wet season (ha)	Dry season (ha)					
Paksane District													
1	Honei Nangni	Flood gate	H.Nang ni	Patxoum	2,000.0	1,140.0	2,000.0	0.0	1992	1993	k	Lao Go	
2	Houei Thong	Weir	H.Thong	Nakhaolom	15.0	5.0	15.0	0.0	1989	1989		Qua KER	Canal broken
3	Houei Nga	Weir	H.Nga	Xaysavang	20.0	10.0	20.0	10.0	1991	1991		CAA	
4	Houei Siat	Weir	H.Siat	Houei Siat	30.0	10.0	30.0	0.0	1989	1992	k	FCD	Canal broken
5	Pak Pung 4	Pumping	H.Pung	Pak Pung	151.0	51.0	151.0	51.0	1998	1998	k	Lao Go	75KW*1 under con
6	Houei Pheung.	Weir	H.Pheung	Sin Xay	15.0	10.0	15.0	0.0	1988	1989		Lao Go	Canal broken
7	Houei Songmelok	Flood gate	Houei Songmelok	Nong Pham	128.0	80.0	128.0	0.0	1993	1993		Lao Go	Canal broken
	Weir 3 Places				43.0	7.5	43.0	7.5					
8	Hang Xing	Pumping	Nam Khong	Hang Xing	180.0	40.0	180.0	40.0	1997	1997	k	Lao Go	75KW*2
9	Kong Neua	Pumping	Nam Khong	Hin Lat	180.0	40.0	180.0	80.0	1997	1997	k	Lao Go	75KW*2
10	Na Chik	Pumping	Nam Xan	Na Chik	150.0	80.0	150.0	80.0	1997	1997	k	Lao Go	75KW*2
11	Paksane Tai	Pumping	Nam Khong	Paksane	150.0	20.0	150.0	80.0	1997	1997	k	Lao Go	75KW*2
12	Na Pho	Pumping	Nam Pung	Na Pho	180.0	40.0	180.0	80.0	1997	1997	k	Lao Go	37KW*2
13	Pak Pung 1	Pumping	Nam Pung	Pak Pung	150.0	30.0	150.0	80.0	1997	1997	k	Lao Go	37KW*2
14	Na Euang	Pumping	Nam Khong	Na Euang	150.0	20.0	150.0	50.0	1997	1997	k	Lao Go	37KW*2
15	Hatxaikhoun 1	Pumping	Nam Khong	Hatxaikhoun	80.0	35.0	80.0	35.0	1997	1997	k	Lao Go	37KW*2
16	Thong Gnai	Pumping	Nam Xam	Thong	150.0	150.0	150.0	150.0	1998	1998	k	Lao Go	90KW*2
17	Kengsadok	Pumping	Nam	Kengsadok	100.0	100.0	100.0	100.0	1998	1998	k	Lao Go	126HP*2
18	Lak 5	Pumping	Nam Pung	Lak 5	100.0	100.0	100.0	100.0	1998	1998	k	Lao Go	37KW*2
19	Sivilay	Pumping	Nam Xam	Sivilay	50.0	50.0	50.0	50.0	1997	1997	k	Lao Go	37KW*2
20	Tha Na	Pumping	Nam Khong	Tha Na	50.0	50.0	50.0	50.0	1997	1997	k	Lao Go	37KW*2
21	Hatxaikhoun 2	Pumping	Nam Khong	Hatxaikhoun	50.0	50.0	50.0	50.0	1997	1997	k	Lao Go	37KW*2
22	Non Somboun	Pumping	Nam Xan	Non Somboun	150.0	100.0	150.0	100.0	1998	1998	k	Lao Go	75KW*2
23	Sen Oudom	Pumping	Nam Ngiap	Sen Oudom	150.0	80.0	150.0	80.0	1998	1998	k	Lao Go	37KW*2
24	Tha Bo	Pumping	Nam Xan	Tha Bo	150.0	100.0	150.0	100.0	1998	1998	k	Lao Go	75KW*2
25	Patxoum 1	Pumping	Nam Xam	Patxoum	150.0	100.0	150.0	100.0	1998	1998	k	Lao Go	75KW*2
26	Phonxay	Pumping	Nam Khong	Phom Xay	150.0	100.0	150.0	100.0	1998	1998	k	Lao Go	75KW*2

No.	Name of Project	Type of Project	Location of Project		Planned Irrigated Area		Actual Irrigated Area		Year of Construction	Year of Completion	Cost (Thousand kip)	Donor	Remarks
			River	Village	Wet season (ha)	Dry season (ha)	Wet season (ha)	Dry season (ha)					
27	Si Bounheuang	Pumping	Nam Xam	Si Bounheuang	150.0	100.0	150.0	100.0	1998	1998	k 29,847.33	Lao Go	75KW*2
28	Hin Lat	Pumping	Nam Khong	Hin Lat	150.0	100.0	150.0	100.0	1998	1998	k 45,286.50	Lao Go	75KW*2
29	Sin Xai 1	Pumping	Nam Khong	Sin Xai	150.0	100.0	150.0	100.0	1998	1998	k 22,575.63	Lao Go	75KW*2
30	Hatxaisoung	Pumping	Nam Xam	Hatxaisoung	150.0	100.0	150.0	100.0	1998	1998	k 28,049.83	Lao Go	75KW*2
31	Pak Pung 3	Pumping	Nam Pung	Pak Pung	150.0	100.0	150.0	80.0	1998	1998	k 19,804.46	Lao Go	75KW*1 under con
32	Pak Pung 2	Pumping	Nam Pung	Pak Pung	80.0	80.0	80.0	80.0	1998	1998	k 24,634.66	Lao Go	37KW*2
33	Souane Savanh	Pumping	Nam Xam	Souane Savanh	150.0	100.0	150.0	100.0	1998	1998	k 66,963.03	Lao Go	75KW*2
34	Hatxaikhom 3	Pumping	Nam Khong	Hatxaikhom	50.0	50.0	50.0	50.0	1998	1998	k 94,550.96	Lao Go	75KW*2
	Total				5,902.0	3,328.5	5,902.0	2,283.5					
Borikhan District													
35	Nam Xao	Weir	Nam Xao	B.Bo	500.0	300.0	500.0	0.0	1996	1996	k 1,058,700.00	Lao Go	Under construction
36	Houei Dong	Weir	H.Dong	B.Dong	50.0	10.0	50.0	10.0	1995	1995		Lao Go	
37	Houei Kham	Reservoir	H.Kham	B.Dong	120.0	20.0	120.0	20.0	1996	1996	k 260,000.00	Lao Go	Under construction
38	Wat That	Pumping	Nam Xam	Wat That	51.0	51.0	51.0	51.0	1998	1998	k 27,690.86	Lao Go	37KW*2
	Weir 42 places				132.0	0.0	132.0	0.0					
39	Songkhonmai	Pumping	Nam Xam	Songkhonmai	80.0	60.0	80.0	60.0	1998	1998	k 30,059.56	Lao Go	90KW*2
40	Ban Done 1.2	Pumping	Nam Xam	B.Done	308.0	200.0	308.0	200.0	1998	1998	k 111,948.16	Lao Go	75KW*4
	Total				1,241.0	641.0	1,241.0	341.0					
Tha Phabar District													
41	Nong Lom	Reservoir	Nong Lom	B.Thouay	70.0	10.0	70.0	0.0	1990	1990		FCO	Canal broken
42	Chok Gnai	Reservoir	Chok Gnai	B.Thouay	80.0	0.0	80.0	0.0				Lao Go	
43	Houei Xai Ing	Reservoir	H.Xai Ing	Veune That	100.0	0.0	100.0	0.0	1992	1992		Lao Go	
44	Pak Thouy Tay	Pumping	Nam Thouay	B.Pak Thouay	150.0	100.0	150.0	100.0	1997	1997	k 29,049.59	Lao Go	75KW*2
45	Pak houyGnai 2	Pumping	Nam Khong	Pakhouygnai	150.0	100.0	150.0	100.0	1998	1998	k 37,188.97	Lao Go	75KW*2
46	Houei Sayphay	Pumping	Nam Khong	B.Houeisayphay	270.0	150.0	270.0	150.0	1997	1997	k 28,255.53	Lao Go	75KW*2
47	B.Thouay Gnai	Pumping	Nam Khong	ThouayGnai	150.0	100.0	150.0	100.0	1997	1997	k 30,822.25	Lao Go	75KW*2
48	Hong Thone 1	Pumping	Nam Khong	Hong Thong	180.0	150.0	180.0	150.0	1997	1997	k 24,964.94	Lao Go	75KW*2
49	Hong Thong 2	Pumping	Nam Khong	Hong Thong	180.0	150.0	180.0	150.0	1997	1997	k 22,072.12	Lao Go	75KW*2
50	Pha Pong	Pumping	Nam Khong	Pha Pong	180.0	80.0	180.0	50.0	1997	1997	k 25,501.14	Lao Go	75KW*2

No.	Name of Project	Type of Project	Location of Project		Planned Irrigated Area		Actual Irrigated Area		Year of Construction	Year of Completion	Cost (Thousand kip)	Donor	Remarks
			River	Village	Wet season (ha)	Dry season (ha)	Wet season (ha)	Dry season (ha)					
51	Tha Bok 1	Pumping	Nam Mang	Thabok	270.0	100.0	270.0	100.0	1997	1997	k 92,130.34	Lao Go	75KW*2
52	Na Kham 1	Pumping	Nam Khong	Nakham	180.0	100.0	180.0	100.0	1997	1997	k 16,880.90	Lao Go	75KW*2
53	Nam Ching	Pumping	Nam Khong	Nam Ching	180.0	100.0	180.0	50.0	1997	1997	k 17,268.75	Lao Go	75KW*1 under con
54	Gnoi Hai	Pumping	Nam Khong	Gnoi Hay	180.0	100.0	180.0	100.0	1997	1997	k 19,813.25	Lao Go	65HP*2
55	Nong Keuan	Pumping	Nam Khong	Nong Keuan	180.0	100.0	180.0	100.0	1997	1997	k 31,196.32	Lao Go	65HP*2
56	PakThuayNeua	Pumping	Nam Khong	Pak Thuay	180.0	100.0	180.0	100.0	1997	1997	k 15,076.97	Lao Go	65HP*2
57	Na Kham 2	Pumping	Nam Khong	Na Kham	180.0	100.0	180.0	100.0	1998	1998	k 31,003.23	Lao Go	75KW*2
58	Pak Lenk	Pumping	Nam Mang	Pak Leuk	150.0	51.0	150.0	40.0	1998	1998	k 23,261.00	Lao Go	37KW*1 under con
	Total				3,010.0	1,591.0	3,010.0	1,490.0					
Pak Kading District													
59	Thong Noi 1	Pumping	Nam Khong	Thong Noi	51.0	51.0	51.0	51.0	1997	1997	k 32,210.23	Lao Go	65HP*2
60	Nam Khou	Weir	Nam Khou	Nam Khou	600.0	400.0	600.0	35.0	1998	1998	k 1,262,000.00	Lao Go	Under construction
61	Nong Boua	Pumping	Nam Deua	Nong Boua	100.0	51.0	100.0	51.0	1997	1997	k 51,401.40	Lao Go	65HP*2
62	Som Sanouk	Pumping	Nam Khong	Som Sanouk	103.0	80.0	103.0	80.0	1997	1997	k 43,316.03	Lao Go	65HP*2
63	Tha Sa At	Pumping	Nam Khong	Tha Sa At	100.0	51.0	100.0	51.0	1997	1997	k 29,116.81	Lao Go	65HP*2
64	Thong Hap	Pumping	Nam Deua	Thong Hap	100.0	51.0	100.0	51.0	1997	1997	k 25,513.66	Lao Go	65HP*2
65	Khon Song	Pumping	Nam Thon	Khon Song	100.0	51.0	100.0	51.0	1997	1997	k 24,536.63	Lao Go	65HP*2
66	Nam Thon	Pumping	Nam Thon	Nam Thon	100.0	51.0	100.0	51.0	1997	1997	k 24,290.44	Lao Go	65HP*2
67	Na Hin	Pumping	Nam Deua	Na Hin	100.0	51.0	100.0	51.0	1997	1997	k 23,296.49	Lao Go	65HP*2
68	Pak Kading 1	Pumping	Nam Khong	Pak Kading	100.0	51.0	100.0	51.0	1997	1997	k 32,121.94	Lao Go	65HP*2
69	Pak Sa	Pumping	Nam Khong	Pak Sa	100.0	51.0	100.0	51.0	1997	1997	k 34,557.15	Lao Go	65HP*2
70	Pak Kading	Pumping	Nam Khong	Pak Kading	100.0	51.0	100.0	51.0	1997	1997	k 26,377.85	Lao Go	65HP*2
71	Na Luang	Pumping	Nam Thon	Na Luang	103.0	51.0	103.0	51.0	1998	1998	k 52,162.18	Lao Go	65HP*2
72	Phone Ngam	Pumping	Nam Kading	Phone Ngam	103.0	51.0	103.0	51.0	1998	1998	k 52,162.18	Lao Go	65HP*2
73	Ban Chot 1	Pumping	Nam Khong	B. Chot	51.0	51.0	51.0	51.0	1998	1998	k 32,639.75	Lao Go	65HP*2
74	Thong Noi 2	Pumping	Nam Khong	Thong Noi	51.0	51.0	51.0	51.0	1998	1998	k 26,377.85	Lao Go	65HP*2
	Weir 31 places				221.6	132.2	221.6	132.2					
	Total				2,183.6	1,326.2	2,183.6	961.2					

Existing Irrigation Project in the Study Area - Khammouane Province-

No.	Name of Project	Type of Project	Location of Project		Planned Irrigated Area			Actual Irrigated Area		Year of Construction	Year of Completion	Cost (million kip)	Donor	Remarks
			River	Village	Wet season (ha)	Dry season (ha)	Wet season (ha)	Dry season (ha)						
Thakhek District														
1	Mang kao	Pumping	Mekong	Muang kao	614.0	600.0	400.0	325.0	1984	1989	k	Lao Go	132KW*4	
2	Hat Kham	Pumping	Mekong	Hat Kham	250.0	50.0	75.0	23.0	1996	1996	k	Lao Go	75KW*2 no canal	
3	Tham	Pumping	Nam Don	Tham	262.0	200.0	260.0	50.0	1996	1996	k	Lao Go	75KW*2 no canal	
4	Tha Khe	Pumping	Nam Don	Tha Khe	150.0	100.0	47.0	55.0	1997	1998	k	Lao Go	75KW*2 no canal	
5	Chom Cheng	Pumping	Mekong	Chom Cheng	352.0	90.0	100.0	82.0	1992	1992		Lao Go	75KW*2	
6	Pho Sy Tha	Pumping	Nam Don	Pho Sy Tha	20.0	40.0	15.0	0.0	1998	1998	k	Lao Go	37KW*2 canal con	
7	Na Nong Keo	Pumping	Nam Don	Na Nong Keo	38.0	40.0	38.0	25.0	1998	1998	k	Lao Go	37KW*2 no canal	
8	Sa Ngom	Pumping	H. Bang Khao	Sa Ngom	67.0	40.0	60.0	0.0	1998	1998	k	Lao Go	37KW*2 no canal	
9	Na Tad	Pumping	Mekong	Na Tad	50.0	40.0	50.0	0.0	1998	1998	k	Lao Go	37KW*2 no canal	
10	Tha Ngam	Pumping	H. Bang Hieng	Tha Ngam	150.0	45.0	100.0	40.0	1994	1995		Lao Go	18.5KW*1	
11	Pak Peng	Pumping	Reservoir	Pak Peng	200.0	100.0	126.0	41.0	1992	1992	k	Lao Go	18.5KW*1	
12	Na Meuang	Pumping	Mekong	Na Meuang	85.0	50.0	80.0	20.0	1995	1995		Lao Go	15KW*2	
13	Houei Pho	Pumping	H. Pho	Dong Tai	30.0	20.0	30.0	20.0	1995	1996		Lao Go	15KW*1	
14	Tha He	Pumping	Mekong	Tha He	100.0	40.0	100.0	20.0	1997	1997		Lao Go	15KW*2	
15	Na Sa Tho	Pumping	Nam Don	Na Sa Tho	50.0	50.0	40.0	10.0	1997	1997		Lao Go	11KW*4	
16	Bang Hieng	Pumping	Bung	Bang Hieng	100.0	40.0	50.0	20.0	1997	1997		Lao Go	11KW*4	
17	Na Hha Vay	Pumping	Nam Don	Na Hha vay	50.0	40.0	50.0	2.0	1997	1997		Lao Go	11KW*4	
18	Na Phong Du	Pumping	Nam Don	Na Pho Do	70.0	30.0	50.0	25.0	1996	1996		Lao Go	65HP*1	
19	Na Hua Ngua	Pumping	Nam Don	Na Hua Ngua	50.0	40.0	50.0	40.0	1998	1998	k	Lao Go	65HP*1	
20	Na Buap	Pumping	Houei	Na Buap	50.0	6.0	50.0	5.0	1998	1998		Lao Go	14HP*2	
21	Phon Ngam	Pumping	Houei	Phon Ngam	40.0	2.0	40.0	2.0	1998	1998		Lao Go	14HP*1	
22	Keng Nhang	Pumping	Houei	Keng Nhang	18.0	6.0	18.0	5.0	1998	1998		Lao Go	14HP*2	
23	Muang	Pumping	Houei	Muang	23.0	5.0	21.0	2.0	1997	1997		Lao Go	14HP*1	
24	Doy	Pumping	Houei	Doy	50.0	5.0	50.0	3.0	1997	1997		Lao Go	14HP*1	
25	Siang Ven	Pumping	Houei	Siang Ven	70.0	6.0	70.0	5.0	1997	1997		Lao Go	14HP*2	
26	Kung Sy	Pumping	Houei	Kung Sy	6.0	4.0	5.0	2.0	1997	1997		Lao Go	14HP*1	

No.	Name of Project	Type of Project	Location of Project		Planned Irrigated Area		Actual Irrigated Area		Year of Construction	Year of Completion	Cost (million kip)	Donor	Remarks
			River	Village	Wet season (ha)	Dry season (ha)	Wet season (ha)	Dry season (ha)					
27	Na Buap	Reservoir		Na Buap					1992	1993		Lao Go	Cash crops
28	H.Bang Khao	Weir	H.Bang Khao	Sa Ngom					1997	1998		Lao Go	New construction
	Total				2,945.0	1,689.0	1,975.0	822.0					
Nog Bok District													
44	Siang Vang	Pumping	Mekong	Siang Vang	600.0	500.0	600.0	0.0	1997			Lao Go	150KW*2 under con.
45	Bung San	Pumping	Mekong	Bung San	200.0	100.0	200.0	88.0	1993	1997		Lao Go	110KW*2 no canal
46	Na Tai	Pumping	Se Bang Fai	Na Tai	300.0	200.0	300.0	170.0	1994	1995		Lao Go	110KW*2 no canal
47	Hat Siang Di	Pumping	Se Bang Fai	Hat Siang Di	250.0	200.0	250.0	190.0	1991	1994	k 78.00	Lao Go	90KW*2 canal broken
48	Sa Du	Pumping	Se Bang Fai	Sa Du	150.0	100.0	150.0	0.0	1998	1998		Lao Go	90KW*2 new const.
49	Nam Phu	Pumping	Se Bang Fai	Nam Phu	300.0	200.0	300.0	160.0	1991	1994	k 49.78	Lao Go	75KW*2 damaged
50	Na Vang	Pumping	Se Bang Fai	Na Vang	150.0	100.0	150.0	90.0	1996	1996	k 36.71	Lao Go	75KW*2 no canal
51	Dong Sa Ngam	Pumping	Se Bang Fai	Dong Sa Ngam	150.0	100.0	120.0	65.0	1996	1996	k 71.68	Lao Go	75KW*2 no canal
52	Dong Ka Sin	Pumping	Se Bang Fai	Dong Ka Sin	150.0	100.0	120.0	62.0	1996	1996	k 68.37	Lao Go	75KW*2 no canal
53	Sok bo	Pumping	Se Bang Fai	Sok bo	150.0	120.0	120.0	101.0	1997	1997	k 61.72	Lao Go	75KW*2 canal const.
54	Phone sa oe	Pumping	Se Bang Fai	Phone sa oe	300.0	300.0	100.0	50.0	1997	1997	k 75.17	Lao Go	75KW*2 no canal
55	Hat Say Fong	Pumping	Se Bang Fai	Hat Say Fong	150.0	120.0	100.0	70.0	1997	1997	k 53.74	Lao Go	75KW*2 no canal
56	Na Vang Thong	Pumping	Se Bang Fai	Na Vang Thong	150.0	100.0	150.0	68.0	1997	1997	k 50.59	Lao Go	75KW*2 no canal
57	Na Vang Tai	Pumping	Se Bang Fai	Na Vang Tai	150.0	100.0	100.0	31.0	1997	1997	k 52.27	Lao Go	75KW*2 no canal
58	Na Vang Noy	Pumping	Se Bang Fai	Na Vang Noy	150.0	100.0	150.0	20.0	1997	1997	k 56.77	Lao Go	75KW*2 no canal
59	Na Man Pa	Pumping	Se Bang Fai	Na Man Pa	150.0	150.0	120.0	250.0	1998	1998	k 95.82	Lao Go	75KW*2 no canal
60	Tan Theung	Pumping	Se Bang Fai	Tan Theung	140.0	100.0	120.0	0.0	1996	1996		Lao Go	75KW*2 no canal
61	Dong Phak Phua	Pumping	Se Bang Fai	DongPhakPhua	150.0	100.0	100.0	0.0	1996	1996	k 22.00	Lao Go	75KW*2 no canal
62	Sa Du Tai	Pumping	Se Bang Fai	Sa Du Tai	200.0	100.0	180.0	0.0	1998	1998		Lao Go	75KW*2 no canal
63	Tha Muang	Pumping	Se Bang Fai	Tha Muang	100.0	40.0	80.0	0.0	1998	1998		Lao Go	75KW*2 no canal
64	Sam Na Di	Pumping	Se Bang Fai	Sam Na Di	50.0	30.0	50.0	15.0	1995	1996		Lao Go	75KW*2 no canal
65	H.Bangkak	Gate	H.Bangkak	Pak Se	30.0	0.0	30.0	0.0	1991	1993		Lao Go	not completed
66	H.Sa Du	Gate	H.Sa Du	Sa Du	50.0	0.0	50.0	0.0	1990	1991			Damaged
67	H.Sok Bo	Gate	H.Sok Bo	Sok Bo	430.0	0.0	430.0	0.0	1990	1990		Lao Go	Damaged
68	H. Bum	Gate	H. Bum	Pak Y Tu	30.0	0.0	30.0	0.0	1966	1966		Lao Go	Damaged

No.	Name of Project	Type of Project	Location of Project		Planned Irrigated Area		Actual Irrigated Area		Year of Construction	Year of Completion	Cost (million kip)	Donor	Remarks
			River	Village	Wet season (ha)	Dry season (ha)	Wet season (ha)	Dry season (ha)					
69	H. Lo	Gate	H. Lo	Siang Di	40.0	0.0	40.0	0.0	1992	1993	80.00	Lao Go	
70	H. Memang	Gate	H. Memang	Sai Fong	30.0	0.0	30.0	0.0	1996	1997	120.00	Lao Go	Damaged
71	H. Khe	Gate	H. Khe	Sok Bo	30.0	0.0	30.0	0.0	1995	1995		Lao Go	Damaged
	Total				4,730.0	2,960.0	4,200.0	1,430.0					
Himbun District													
72	Done Du	Pumping	Hin Bun	Done Du	200.0	200.0	200.0	20.0	1996	1996	130.69	Lao Go	150KW*2
73													Canal construction
74	Pak Nam Pa Kam	Pumping	Nam Pa Kan	Pak Pa Kan	200.0	150.0	150.0	0.0	1996	1998		Lao Go	90KW*2 no canal
75	Hin Khan	Pumping	Hin Bun	Hin Khan	150.0	100.0	100.0	78.0	1995	1998		Lao Go	75KW*2 no cleared area
76	Pung Nua	Pumping	Mekong	Pung Nua	150.0	100.0	100.0	50.0	1995	1996		Lao Go	75KW*2 canal const.
77	Phon Men	Pumping	Hin Bun	Phon Men	250.0	150.0	200.0	50.0	1996	1996	110.28	Lao Go	75KW*2 no canal
78	Pak Hin Bun Tai	Pumping	Hin Bun	Pak Hin Bun	200.0	150.0	150.0	48.0	1997	1997	67.16	Lao Go	75KW*2 no canal
79													
80	Nong Hoy	Pumping	Nam Pa Kan	Nong Hoy	250.0	200.0	200.0	48.0	1997	1997	76.51	Lao Go	75KW*2 no canal
81	Kham Keo	Pumping	Him Bun	Kham Keo	100.0	100.0		25.0	1997	1997	48.62	Lao Go	75KW*2 no canal
82	Phon Kham	Pumping	Nam Pa Kan	Phon Kham			20.0		1998	1998		Lao Go	75KW*2 not opened area
83	Nong Chan La	Pumping	Hin Bun	Nong ChanLa	50.0	40.0	40.0		1998	1998		Lao Go	75KW*2 new const.
84	Sy Som Suang	Pumping	Hin Bun	Sy Som Suan	100.0	50.0	30.0		1998	1998		Lao Go	75KW*2 new const.
85	Kham Keo	Pumping	Hin Bun	Kham Keo	80.0	50.0			1996	1996		Lao Go	75KW*2 new const.
86	SaMaKhiXay	Pumping	Hin Bun	SaMaKhiXay	40.0	30.0	30.0	18.0	1997	1997	56.30	Lao Go	37KW*2 no canal
87	Tao Than	Pumping	Hin Bun	Tao Than	50.0	30.0	20.0		1998	1998		Lao Go	37KW*2 New const.
88	Nong Bua	Pumping	Nam Pa Kan	Nong Bua	100.0	50.0	20.0		1998	1998		Lao Go	37KW*2 New const.
89	Vang Hua Pa	Pumping	Hin Bun	Vang Hua Pa	100.0	50.0	20.0		1998	1998		Lao Go	37KW*2 New const.
90	Pung Tai	Pumping	Hin Bun	Pung Tai	50.0	30.0	20.0		1998	1998		Lao Go	37KW*2 New const.
91	MayNamPaKan2	Pumping	Nam Pa Kan	NamPaKan2	100.0	50.0			1998	1998		Lao Go	37KW*2 New const.
92	MayNamPaKan1	Pumping	Nam Pa Kan	NamPaKan1	130.0	50.0	10.0		1996	1998		Lao Go	37KW*2 New const.
93	Pa Vang	Pumping	Hin Bun	Pa Vang	100.0	50.0	40.0	5.0	1998	1998		Lao Go	37KW*2 New const.
94	Tha Khem	Pumping	Nam Pa Kan	Tha Khen	50.0	40.0	40.0	30.0	1996	1996	23.39	Lao Go	37KW*2 New const.
95	Tha Na Tai	Pumping	Hin Bun	Tha Na Tai	50.0	40.0	40.0	23.0	1996	1996	16.09	Lao Go	65HP*2

No.	Name of Project	Type of Project	Location of Project		Planned Irrigated Area		Actual Irrigated Area		Year of Construction	Year of Completion	Cost (million kip)	Donor	Remarks
			River	Village	Wet season (ha)	Dry season (ha)	Wet season (ha)	Dry season (ha)					
96	Tha Na Nua	Pumping	Hin Bun	Tha Na Nua	50.0	20.0	30.0	20.0	1996	1996	21.61	Lao Go	65HP*2
97	Nong Khum	Pumping	Hin Bun	Nong Khun	50.0	20.0	30.0	12.0	1996	1996	14.54	Lao Go	65HP*1
98	Pha Hang Tai	Pumping	Hin Bun	Pha Hang Tai	50.0	30.0	30.0	25.0	1996	1996	28.28	Lao Go	65HP*2
99	Pak Thuk	Pumping	Hin Bun	Pak Thuk	70.0	30.0	70.0	15.0	1996	1996	27.68	Lao Go	65HP*2
100	Nap Pho	Pumping	Nam Pa Kan	Na Pho	100.0	40.0	80.0	30.0	1996	1996	21.92	Lao Go	65HP*2
101	Sang	Pumping	Him Bun	Sang	80.0	30.0	60.0	14.0	1996	1996	22.67	Lao Go	65HP*1
102	Song Khon	Pumping	Hin Bun	Song Khon	50.0	30.0	40.0	20.0	1996	1996	23.28	Lao Go	65HP*1
103	Thong Lom	Pumping	Hin Bun	Thong Lom	100.0	50.0	50.0		1997	1997	27.96	Lao Go	65HP*1
104	Phon Nheng	Pumping	Hin Bun	Phon Nheng	120.0	21.0	50.0	16.0	1997	1997	25.56	Lao Go	65HP*2
105	Ban O	Pumping	Hin Bun	Ban O	80.0	50.0	60.0		1997	1997	25.71	Lao Go	65HP*2
106	Hat Sai Khang	Pumping	Hin Bun	Hat Sai Khang	70.0	40.0	50.0	13.0	1997	1997	27.99	Lao Go	65HP*2
107	Nong Hang	Pumping	Hin Bun	Nong Hang	100.0	50.0	50.0	25.0	1997	1997	27.53	Lao Go	65HP*2
108	Nong Dong	Pumping	Hin Bun	Nong Dong	50.0	40.0	30.0	10.0	1997	1997	27.61	Lao Go	65HP*1
109	Vang Mon	Pumping	Hin Bun	Vang Mon	150.0	70.0	100.0		1997	1997	28.63	Lao Go	65HP*1
110	Vang Dao	Pumping	Hin Bun	Vang Dao	100.0	60.0	80.0	18.0	1997	1997	27.34	Lao Go	65HP*2
111	Muang Nua	Pumping	Hin Bun	Muang Nua	150.0	80.0	50.0		1997	1997	25.66	Lao Go	65HP*1
112	Pha Khong2	Pumping	Hin Bun	Pha Khong2	80.0	40.0	30.0	13.0	1997	1997	26.22	Lao Go	65HP*1
113	Pha Khong1	Pumping	Hin Bun	Pha Khong1	80.0	40.0	50.0	15.0	1997	1997	28.44	Lao Go	65HP*2
114	Pha Hang Nua	Pumping	Hin Bun	Pha Hang Nua	100.0	40.0	50.0		1997	1997	27.95	Lao Go	65HP*2
115	Pak Veng	Pumping	Hin Bun	Pak Veng	50.0	40.0	40.0		1997	1997	27.66	Lao Go	65HP*1
116	Na Teay	Pumping	Hin Bun	Na Teay	50.0	40.0	40.0	8.0	1997	1997	25.47	Lao Go	65HP*1
117	Na Phuak	Pumping	Hin Bun	Na Phuak	50.0	30.0	30.0		1997	1997	27.05	Lao Go	65HP*1
118	Na Sang Kham	Pumping	Hin Bun	Na Sang Kham	60.0	40.0	30.0	14.0	1997	1997	25.71	Lao Go	65HP*2
119	Na Khok	Pumping	Hin Bun	Na Khok	100.0	50.0	30.0		1997	1997	29.82	Lao Go	65HP*2
120	Kub	Pumping	Hin Bun	Kub	100.0	40.0	70.0	15.0	1997	1997	24.73	Lao Go	65HP*2
121	Kong Lo Kang	Pumping	Hin Bun	Kong Lo Kang	150.0	50.0	100.0		1997	1997	27.87	Lao Go	65HP*2
122	Nong Chang	Pumping		Nong Chang				5.0	1997	1997		Lao Go	14HP*3
123	H.Mak uk	Weir		Na Bon	50.0		50.0		1994	1994	15.00	Lao Go	
124	H.Na	Weir		Ban Phong	30.0		30.0		1994	1994	15.00	Lao Go	
125	H.Luk	Weir		Ban Phong	40.0		40.0		1994	1994	15.00	Lao Go	

No.	Name of Project	Type of Project	Location of Project		Planned Irrigated Area		Actual Irrigated Area		Year of Construction	Year of Completion	Cost (million kip)	Donor	Remarks
			River	Village	Wet season (ha)	Dry season (ha)	Wet season (ha)	Dry season (ha)					
	Total				4,810.0	2,831.0	2,880.0	683.0					
Xe Bangfai District													
136	Hai Kham Hiang	Pumping	Se Bang Fai	H. Kham Hiang	300.0	300.0	300.0	300.0	1991	1991	k	Lao Go	75KW*2 canal broken
137	NaPhok Tha	Pumping	Se Bang Fai	NaPhok Tha	250.0	200.0	250.0	38.0	1996	1996	k	Lao Go	75KW*2 no canal
138	Dang Tha	Pumping	Se Bang Fai	Dang Tha	250.0	100.0	100.0	35.0	1997	1997	k	Lao Go	75KW*2 no canal
139	Nhang Kham	Pumping	Se Bang Fai	Nhang Kham	300.0	250.0	250.0	55.0	1997	1997	k	Lao Go	75KW*2 no canal
140	Song Sa At	Pumping	Se Bang Fai	Som Sa At	150.0	100.0	100.0		1998	1998		Lao Go	75KW*2 no canal
141	Keng Ka Si	Pumping	Se Bang Fai	Keng Ka Si	150.0	50.0	100.0		1996	1996	k	Lao Go	65HP*1
142	Veng Sa Nan	Pumping	Se Bang Fai	Veun Sa Nan	40.0	15.0	20.0	3.0	1998	1998	k	Lao Go	65HP*1
143	Keng Khen	Pumping	Se Bang Fai	Keng Khen	40.0	20.0	40.0	6.0	1996	1996	k	Lao Go	65HP*1
144	Tha Hat	Pumping	Se Bang Fai	Tha Hat	40.0	20.0	40.0	7.0	1996	1996	k	Lao Go	65HP*1
145	Tha Kho	Pumping	Se Bang Fai	Tha Kho	30.0	20.0	30.0	15.0	1996	1996	k	Lao Go	65HP*2
146	Keng Pe	Pumping	Se Bang Fai	Keng Pe	30.0	30.0	30.0	4.0	1996	1996	k	Lao Go	65HP*2
147	Pak Se Noy	Pumping	Se Bang Fai	Pak Se Noy	50.0	30.0	50.0	10.0	1996	1996	k	Lao Go	65HP*1
148	Na Than	Pumping	Se Bang Fai	Na Than	50.0	40.0	40.0		1997	1997	k	Lao Go	65HP*1
149	Hat Phek	Pumping	Se Bang Fai	Hat Phek	50.0	40.0	40.0		1997	1997	k	Lao Go	65HP*2
150	Ban Some	Gate	Houei	Ban Some	10.0		10.0		1997	1997			
151	Dong Mak Ba	Gate	Bung	Dong Mak Ba	100.0	70.0	100.0	70.0	1998	1998	u	Austr.	
152	Na Phok Tha	Gate	H. Phok	Na Phok Tha		20.0		20.0	1997	1997	k	Austr.	
153	H. Chong	Gate	H. Chong	H. Chong	80.0		80.0		1994	1995			
154	Som	Pumping	Houei	Som Sa At	20.0	5.0	20.0	2.0	1997	1997		Lao Go	14HP*1
155	Some	Pumping	Houei	Some	20.0	5.0	20.0	3.0	1997	1997	k	Austr.	14HP*2
156	Dong Mak Ba	Pumping	Bung	Dong Mak Ba	20.0	15.0	20.0	10.0	1997	1997		Lao Go	14HP*2
157	Tha Sy De	Pumping	Houei	Tha Sy Da	15.0	5.0	15.0	5.0	1997	1997		Lao Go	14HP*2
	Total				1,995.0	1,335.0	1,655.0	583.0					

Existing Irrigation Project in the Study Area - Savannakhet Province-

No.	Name of Project	Type of Project	Location of Project		Planned Irrigated Area		Actual Irrigated Area		Year of Construction	Year of Completion	Cost (Million)	Donor	Remarks
			River	Village	Wet season (ha)	Dry season (ha)	Wet season (ha)	Dry season (ha)					
Xaybull District													
64	Tonhen	Pumping	Xebangfai	Tonhen	540.0	450.0	540.0	350.0	1985	1989	k 220.00	Lao Go	90KW*2
65	Bungxe	Pumping	Xebangfai	Bungxe	350.0	300.0	350.0	250.0	1988	1991	k 383.00	Lao Go	90KW*2
66	Kengphosi	Pumping	Xebangfai	Kengphosi	250.0	200.0	250.0	150.0	1988	1990		Lao Go	75KW*2
67	Bouakhai	Pumping	Xebangfai	Bouakhai	300.0	250.0	300.0	150.0	1991	1993		Lao Go	90KW*2
68	Kangpa	Pumping	Xebangfai	Kangpa	300.0	250.0	300.0	250.0	1996	1996	k 450.00	Lao Go	90KW*2
69	SoumSaad	Pumping	Xebangfai	SoumSaad	300.0	250.0	300.0	250.0	1996	1996	k 450.00	Lao Go	90KW*2
70	Dangsavan	Pumping	Xebangfai	Dangsavan	250.0	200.0	250.0	170.0	1997	1997	k 60.56	Lao Go	75KW*2
71	Hatsaysung	Pumping	Xebangfai	Hatsaysung	250.0	200.0	250.0	192.0	1997	1997	k 59.63	Lao Go	75KW*2
72	Thabo	Pumping	Xebangfai	Thabo	250.0	200.0	250.0	150.0	1997	1997	k 57.24	Lao Go	75KW*2
73	Sakong	Pumping	Xebangfai	Sakong	250.0	200.0	250.0	160.0	1997	1997	k 59.86	Lao Go	75KW*2
74	Pakpua	Pumping	Xebangfai	Pakpua	250.0	200.0	250.0	170.0	1997	1997	k 58.99	Lao Go	75KW*2
75	SoumSaad2	Pumping	Xebangfai	Dongpao	250.0	200.0	250.0	190.0	1997	1997	k 67.09	Lao Go	75KW*2
76	Nasxiangkan	Pumping	Xebangfai	Nasxiangkan	250.0	200.0	250.0	199.0	1997	1997	k 60.64	Lao Go	75KW*2
77	Nonghuathong	Pumping	Xebangfai	Nonghuathong	250.0	200.0	250.0	189.0	1997	1997	k 64.36	Lao Go	75KW*2
78	Haikangdi	Pumping	Xebangfai	Hakangdi	250.0	200.0	250.0	192.0	1997	1997	k 88.68	Lao Go	75KW*2
79	ThaKar	Pumping	Xebangfai	ThaKar	250.0	200.0	250.0	195.0	1997	1997	k 138.76	Lao Go	75KW*2
80	Thakam	Pumping	Xebangfai	Thakam	250.0	200.0	250.0	200.0	1997	1997	k 105.30	Lao Go	75KW*2
81	Bungxe2	Pumping	Xebangfai	Bungxe	250.0	200.0	250.0	200.0	1997	1997	k 76.46	Lao Go	75KW*2
82	Hatsaysung2	Pumping	Xebangfai	Hatsaysung	150.0	100.0	150.0	120.0	1998	1998	k 85.43	Lao Go	37KW*2
83	Nonghuathong2	Pumping	Xebangfai	Nonghuathong	150.0	100.0	150.0	100.0	1998	1998	k 124.79	Lao Go	37KW*2
84	Phoudin	Pumping	Xebangfai	Dangsavan	250.0	200.0	250.0	200.0	1998	1998		Lao Go	75KW*4
85	Dongyang	Pumping	Xebangfai	Dongyang	250.0	200.0	250.0	190.0	1998	1998		Lao Go	
86	Dongpao	Pumping	H.papak	Dongpao	100.0	80.0	100.0	80.0	1998	1998	k 33.75	Lao Go	11KW*10
87	Naonua	Pumping	H.Numlin	Naonua	100.0	80.0	100.0	80.0	1998	1998	k 52.35	Lao Go	11KW*10
	Total				6,040.0	4,860.0	6,040.0	4,377.0					
Kanthabull District													
88	Pakka	Pumping	Mekong	Pakka	300.0	300.0	300.0	250.0	1992	1992	k 850.00	Lao Go	90KW*2
89	Thasano2	Pumping	Mekong	Thasano	200.0	150.0	200.0	150.0	1998	1998	k	Lao Go	37KW*2

No.	Name of Project	Type of Project	Location of Project		Planned Irrigated Area		Actual Irrigated Area		Year of Construction	Year of Completion	Cost (Million)	Donor	Remarks
			River	Village	Wet season (ha)	Dry season (ha)	Wet season (ha)	Dry season (ha)					
90	Nake	Pumping	Mekong	Nake	70.0	30.0	70.0	30.0	1980	1982		Lao Go	75KW*2
91	Thasano1	Pumping	Mekong	Thasano	100.0	70.0	100.0	70.0	1979	1980		Lao Go	37KW*2
92	Thaoudom	Pumping	Mekong	Thaoudom	50.0	20.0	50.0	20.0	1998	1998		Lao Go	37KW*2
93	Yangsung	Pumping	H.Sompoy	Yangsung	50.0	20.0	50.0	20.0	1998	1998		Lao Go	11KW*2
94	Sompoy 1+11	Gateway	Stream	Xok	70.0	20.0	70.0	10.0	1982	1982		Lao Go	
95	Nongtao	Reservoir	Stream	Ponsim	100.0	20.0	100.0	5.0	1987	1987	k	Lao Go	
96	Bungwa	Reservoir	Stream	Bungwa	150.0	100.0	150.0	100.0	1984	1984		Lao Go	
97	H.Huacang	Weir	Stream	H.Huacang	20.0		20.0	2.0	1990	1990	k	Lao Go	1.21
98	H.Say	Weir	Stream	Yangkam	50.0	10.0	50.0	5.0	1990	1990	k	Lao Go	7.67
	Total				1,160.0	740.0	1,160.0	662.0					
Xayphuthong District													
99	Thapho	Pumping	Mekong	Thapho	300.0	250.0	300.0	200.0	1995	1995	k	Lao Go	39.00
100	Thadan	Pumping	Mekong	Thadan	300.0	250.0	300.0	100.0	1995	1995		Lao Go	90KW*2
101	Kanthachan	Pumping	Mekong	Kanthachan	300.0	250.0	300.0	150.0	1995	1995		Lao Go	90KW*2
102	Vernkoon 1+2	Pumping	Mekong	Vernkoon	300.0	250.0	300.0	120.0	1997	1998		Lao Go	90KW*2
103	Dontamngan	Pumping	Mekong	Contamngan	200.0	150.0	200.0	50.0	1998	1998		Lao Go	37KW*2
104	H.Say(H.Ppu)	Weir	Stream	Nampu	410.0	0.0	410.0	0.0	1995	1995	u	JICA	
105	Kutapor	Reservoir	Stream	Pontan	32.0	5.0	32.0	5.0	1987	1987		Lao Go	
106	Kangnoy	Reservoir	Stream	Dongmakfai	30.0	3.0	30.0	3.0	1987	1987		Lao Go	
	Total				1,872.0	1,158.0	1,872.0	628.0					
Songkane District													
107	Lahanam	Pumping	XeBangthieng	Lahanam	600.0	500.0	600.0	500.0	1993	1993	k	Lao Go	239.00
108	Huanhin	Pumping	Mekong	Huanhin	300.0	250.0	300.0	100.0	1997	1997	k	Lao Go	90KW*2
109	Nafong	Pumping	Mekong	Nafong	300.0	250.0	300.0	150.0	1997	1997	k	Lao Go	132KW*2
110	Nongbuatha	Pumping	Mekong	Nongbuatha	400.0	300.0	400.0	120.0	1997	1997	k	Lao Go	150KW*2
111	Nongbua	Pumping	Nong Luang	Nongbua	200.0	150.0	200.0	100.0	1997	1997	k	Lao Go	65HP*2HP
112	Sagnek	Pumping	Nong Luang	Sagnek	200.0	150.0	200.0	100.0	1997	1997	k	Lao Go	65HP*2HP
113	Nongdeun	Pumping	Nong Luang	Nongdek	200.0	150.0	200.0	90.0	1997	1997	k	Lao Go	65HP*2HP
114	Songkone	Pumping	XeBangthieng	Songkone	200.0	150.0	200.0	80.0	1997	1997	k	Lao Go	65HP*2HP
115	Singtha	Pumping	XeBangthieng	Singtha	250.0	200.0	250.0	180.0	1997	1997	k	Lao Go	37KW*2

No.	Name of Project	Type of Project	Location of Project		Planned Irrigated Area			Actual Irrigated Area		Year of Construction	Year of Completion	Cost (Million)	Donor	Remarks
			River	Village	Wet season (ha)	Dry season (ha)	Wet season (ha)	Dry season (ha)	Wet season (ha)					
116	Dongbang	Pumping	XeBanghieng	Dongbang	100.0	80.0	100.0	80.0	1997	1997	k 19.38	Lao Go	37KW*2	
117	Kengtangan	Pumping	XeBangthieng	Kengtangan	100.0	80.0	100.0	80.0	1997	1997	k 21.06	Lao Go	32HP*2HP	
118	Puaykao	Pumping	Xwbanghieng	Puaykao	200.0	150.0	200.0	133.0	1997	1997	k 20.95	Lao Go	65HP*2HP	
119	Dongsavangthong	Pumping	Nong Luang	Ongsavangho	200.0	150.0	200.0	125.0	1997	1997		Lao Go	65HP*2HP	
120	Vixaysong	Pumping	XeBanghieng	Vixaysong	250.0	200.0	250.0	150.0	1997	1997		Lao Go	37KW*2	
121	Thape	Pumping	XeBanghieng	Thape	200.0	150.0	200.0	160.0	1997	1997		Lao Go	65HP*2HP	
122	Tannon	Pumping	Nong Luang	Tannon	200.0	150.0	200.0	140.0	1997	1997		Lao Go	65HP*2HP	
123	Sabusay	Pumping	Mekong	Sabusay	250.0	200.0	250.0	113.0	1998	1998		Lao Go	37KW*2	
124	Nongdeun	Pumping	Mekong	Nongdeun	250.0	200.0	250.0	143.0	1998	1998		Lao Go	37KW*2	
125	Thapachoom	Pumping	Mekong	Thapachoom	250.0	200.0	250.0	135.0	1998	1998		Lao Go	37KW*2	
126	Kengdon	Pumping	XeBanghieng	Kengdon	200.0	150.0	200.0	125.0	1998	1998		Lao Go	37KW*2	
127	Lahakhok 1+2	Pumping	XeBanghieng	Lahakhok	600.0	500.0	600.0	200.0	1998	1998		Lao Go	37KW*2	
128	Nongdeun 2	Pumping	Nong Luang	Nongdeun	200.0	150.0	200.0	100.0	1998	1998		Lao Go	37KW*2	
129	Thokokpuck	Pumping	XeBanghieng	Thokokpuck	200.0	150.0	200.0	90.0	1998	1998		Lao Go	37KW*2	
130	Thoknamkeng	Pumping	XeBanghieng	Lahanam	200.0	150.0	200.0	80.0	1998	1998		Lao Go	37KW*2	
131	Donsanote	Pumping	Mekong	Donsanote	200.0	150.0	200.0	50.0	1998	1998		Lao Go	37KW*2	
132	H.Sara	Reservoir	Stream	Songkhon	200.0	100.0	40.0	10.0	1987	1994	k 0.13	Lao Go		
133	H.Kala	Gateweir	Stream	Nakala	30.0	20.0	30.0	5.0	1984	1986	k 8.44	Lao Go		
134	H.Yang	Weir	Stream	Pakxong	30.0	15.0	20.0	1.0	1986	1988		Lao Go		
135	H.Kok	Weir	Stream	Nongbuotha	20.0	5.0	20.0	2.0	1998	1990	k 5.03	Lao Go		
136	H.Mong	Weir	Stream	Sisavang	50.0	10.0	50.0	5.0	1990	1991	k 4.75	Lao Go		
137	H.Hintek	Weir	Stream	Kum	50.0	20.0	50.0	6.0	1991	1991	k 4.20	Lao Go		
138	H.Korkeup 1+2	Weir	Stream	Nakam	20.0	10.0	20.0	5.0	1985	1985	k 2.06	Lao Go		
139	H.Sangkao	Reservoir	Stream	Pakxong	20.0	5.0	20.0	1.0	1978	1985		Lao Go		
140	H.Payong	Gateweir	Stream	Donyanong	100.0	50.0	100.0	20.0	1988	1993	k 18.38	Lao Go		
	Total				6,770.0	5,145.0	6,600.0	3,379.0						

G.2.3. Existing Irrigation Project in the Major River Study

Existing Irrigation Project in Major River System

(Borikhamxay Province)

River	Study Area			Out of Study Area			Total		
	No. of Project	Planning Irrigated Area (ha)		No. of Project	Planning Irrigated Area (ha)		No. of Project	Planning Irrigated Area (ha)	
		Wet	Dry		Wet	Dry		Wet	Dry
Mekong	32	4,286	2,472				32	4,286	2,472
Nam Xam	11	1,689	1,191				11	1,689	1,191
Nam Ngiap	2	650	380				2	650	380
Nam Pung	5	660	350				5	660	350
H. Nang ni	1	2,000	1,140				1	2,000	1,140
Nam Thon	7	1,203	706				7	1,203	706
Nam Thouay	1	150	100				1	150	100
Nam Mang	2	420	151				2	420	151
Nam Kading	1	103	51	30	2,703	949	31	2,806	1,000
Others	12>	1,173	346				12>	1,173	346
Total	74	12,334	6,887	30	2,703	949	105	15,037	7,836

(Khammouane Province)

River	Study Area			Out of Study Area			Total		
	No. of Project	Planning Irrigated Area (ha)		No. of Project	Planning Irrigated Area (ha)		No. of Project	Planning Irrigated Area (ha)	
		Wet	Dry		Wet	Dry		Wet	Dry
Mekong	9	2,401	1,570				9	2,401	1,570
Nam Dom	10	757	580				10	757	580
Hinbun	49	4,540	2,731				49	4,540	2,731
Sebangfai	35	5,140	3,660	43	3,755	1,791	78	8,895	5,451
Nam Kading				4	200	90	4	200	90
Others	29	1,642	274				29	1,642	274
Total	132	14,480	8,815	47	3,955	1,881	179	18,435	10,696

(Savannakhet Province)

River	Study Area			Out of Study Area			Total		
	No. of Project	Planning Irrigated Area (ha)		No. of Project	Planning Irrigated Area (ha)		No. of Project	Planning Irrigated Area (ha)	
		Wet	Dry		Wet	Dry		Wet	Dry
Mekong	17	4,070	3,270				17	4,070	3,270
Sebangfai	22	5,480	4,700				22	5,840	4,700
Sebanghieng	18	4,300	3,360	126	16,590	10,941	144	20,890	14,301
Others	20	1,632	573	8	330	100	28	1,962	673
Total	77	15,842	11,903	134	16,920	11,041	211	32,762	22,944

G.2.4. Water Use Condition of Major River System

Specific Discharge in Dry Season

Unit : l/s/km*2

River Basin	Basin Area (km*2)	Month					Ave.Min. Discharge	Observation Station
		Dec.	Jan.	Feb.	Mar.	Apr.		
Nam Mang	1,860	15.2	9.1	6.2	5.1	4.7	2.4	No.42
Nam Nuiap	4,490	14.2	11	8.7	7.6	7.3	5.9	No.42
Nam Xam	2,220	15.2	9.1	6.2	5.1	4.7	2.4	No.42
Nam Kading	14,960	12.6	6	4.1	4.4	1.7	2.4	No.47
Nam Thon	660	12.6	6	4.1	4.4	1.7	2.4	No.47
Nam Hinboun	3,380	12.6	6	4.1	4.4	1.7	2.4	No.47
Nam Don	900	12.2	5.5	3.8	3.2	2.5	2.0	No.52
Xebangfai	9,500	12.2	5.5	3.8	3.2	2.5	2.0	No.52
Nam Thahao	680	12.2	5.5	3.8	3.2	2.5	2.0	No.52
Xebanghieng	19,400	10.6	6.2	4.6	4	3.8	2.9	No.54,58,59

Note : Ave. Min. Discharge is the average of minimum discharge in a year.

Water Use Condition of River Basin in Dry Season

River Basin	Basin Area (km*2)	Run-off (Jan-Mar) (MCM)	Base Flow (Jan-Mar) (MCM)	Avai. Flow (Jan-Mar) (MCM) (1)	Planned Dry Paddy		Water Balance (1)-(2) (MCM) (3)	Avai. Water (3)/Basin Area (MCM/km*2)	Applied Observation Station
					Irri. Area (ha)	Water Req. (MCM) (2)			
Nam Mang	1,860	98.64	35.03	63.61	151	2.42	61.19	32.90	No.42
Nam Nuiap	4,490	318.19	207.67	110.52	380	6.08	104.44	23.26	No.42
Nam Xam	2,220	117.73	41.81	75.92	1,191	19.06	56.87	25.62	No.42
Nam Kading	14,960	565.10	284.54	280.56	1,090	17.44	263.12	17.59	No.47
Nam Thon	660	24.93	12.55	12.38	706	11.30	1.08	1.64	No.47
Nam Hinboun	3,380	127.68	64.29	63.39	2,731	43.70	19.69	5.83	No.47
Nam Don	900	29.25	13.78	15.47	580	9.28	6.19	6.87	No.52
Xebangfai	9,500	308.70	145.45	163.25	10,151	162.42	0.83	0.09	No.52
Nam Thahao	680	22.10	10.41	11.69	100	1.60	10.09	14.83	No.52
Xebanghieng	19,400	745.89	432.65	313.24	14,301	228.82	84.42	4.35	No.54,58,59

Note : Base Flow is estimated based on the average minimum flow.

G.2.5. List of Large Scale Irrigation Project Plan

List of Large Scale Irrigation Project Plan (1999-2005)

Province	Project Site	Targeted Irrigation Area (ha)
Bolikhamxay	Nam Ngiap	41,400
	Nam Kading	21,600
	Nam Mang	4,200
	Nam Kata	3,800
	Namphao-Hai	1,200
Khammouane	Vang Viengphi	3,200
	Nochampa	5,000
	Ban Sang	6,000
	Sa Ang	3,000
	Phonsangphai	2,000
	Phonmihae	3,000
	Downstream of Nam Theun 2	14,000
	Houei Xieng Long	1,500
	Hat Khon Keo	2,500
	Vang Viengphi 2	1,600
	Downstream of Theun Hinbun	10,000
Savanakhet	Phousava Thongsikhai	1,086
	Dang Savan	549
	Hootkhamchi	349
	Houei Tha Hao	1,520
	Nong Luang	2,185
	Houei Thuad	1,012
	Phoudin	4,700
	Phoummachedi	5,000
	Xesalong	2,000

Source : DOI, June, 1999

G.2.6.

National Program for Installation and Management of Irrigation Pump (1996-1999)

Pump Installation Plan in Lao PDR and Three Provinces

Province	Number of Pump Unit					Total
	Stage-1	Stage-2	Stage-3	Stage-4	Spare-pump	
Lao PDR	1,427 (100%)	1,782 (100%)	381 (100%)	3,544 (100%)	10	7,144 (100%)
Borikhamxay	114	168	57	400		739
Khammouane	166	107	60	380		713
Savannakhet	396	485	45	640		1,566
Total	676 (47%)	760 (43%)	162 (43%)	1,420 (40%)		3,018 (42%)

Source : DOI

Installation Plan of Pump Unit for the Study Area

Province	Stage-1	Stage-2	Stage-3	Stage-4	Total
Borikhamxay	20	69	94	Not available	183
Khammouane	33	53	38	- ditto -	124
Savannakhet	38	41	30	- ditto -	109
Total	91	163	162	- ditto -	416

Source : DOI

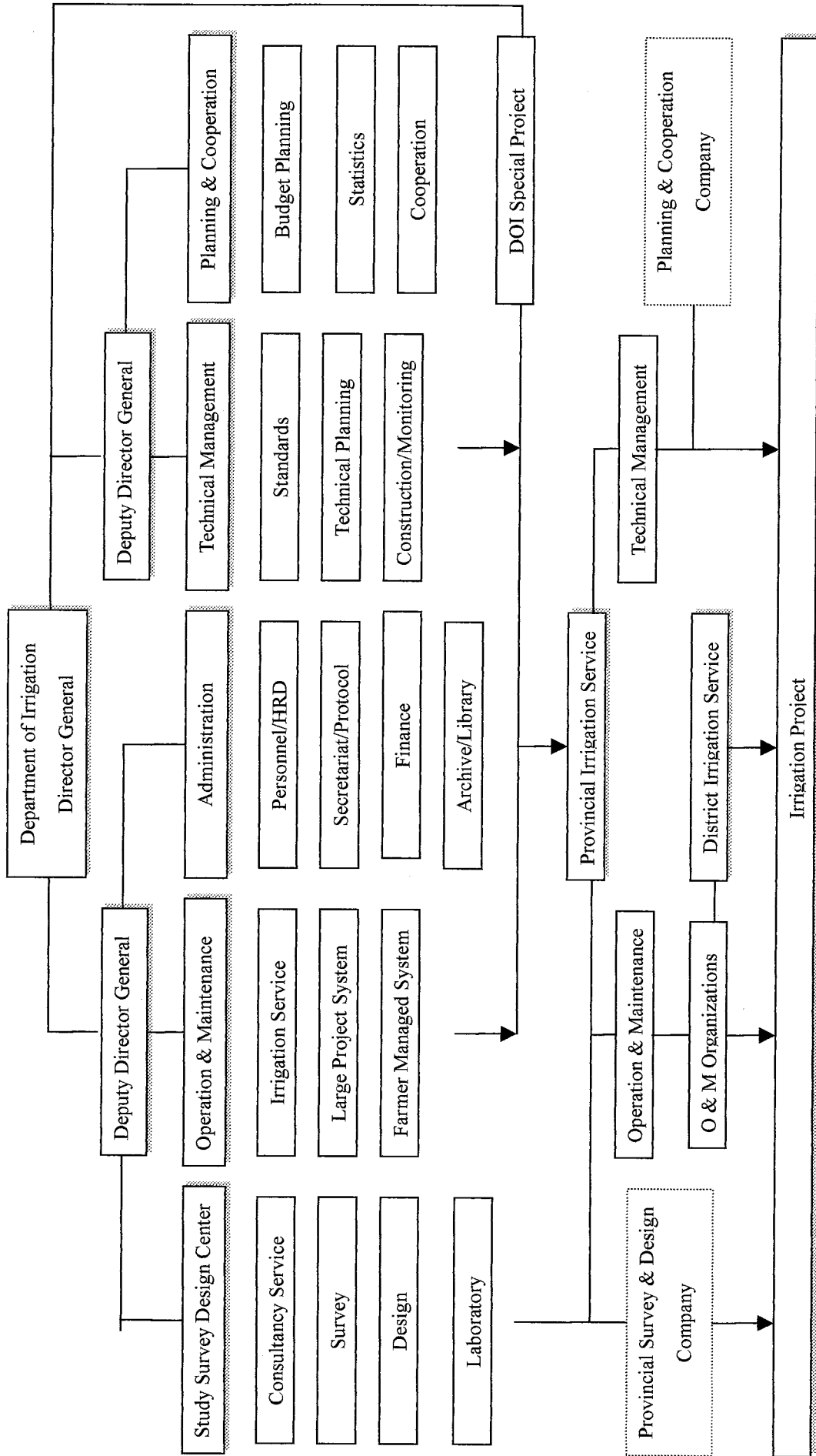
Note : Stage-4 is not available, as of December of 1998. Total number may be modified after completion of stage-4.

Number of Pump Unit Installed in the Study Area (as of December in 1998)

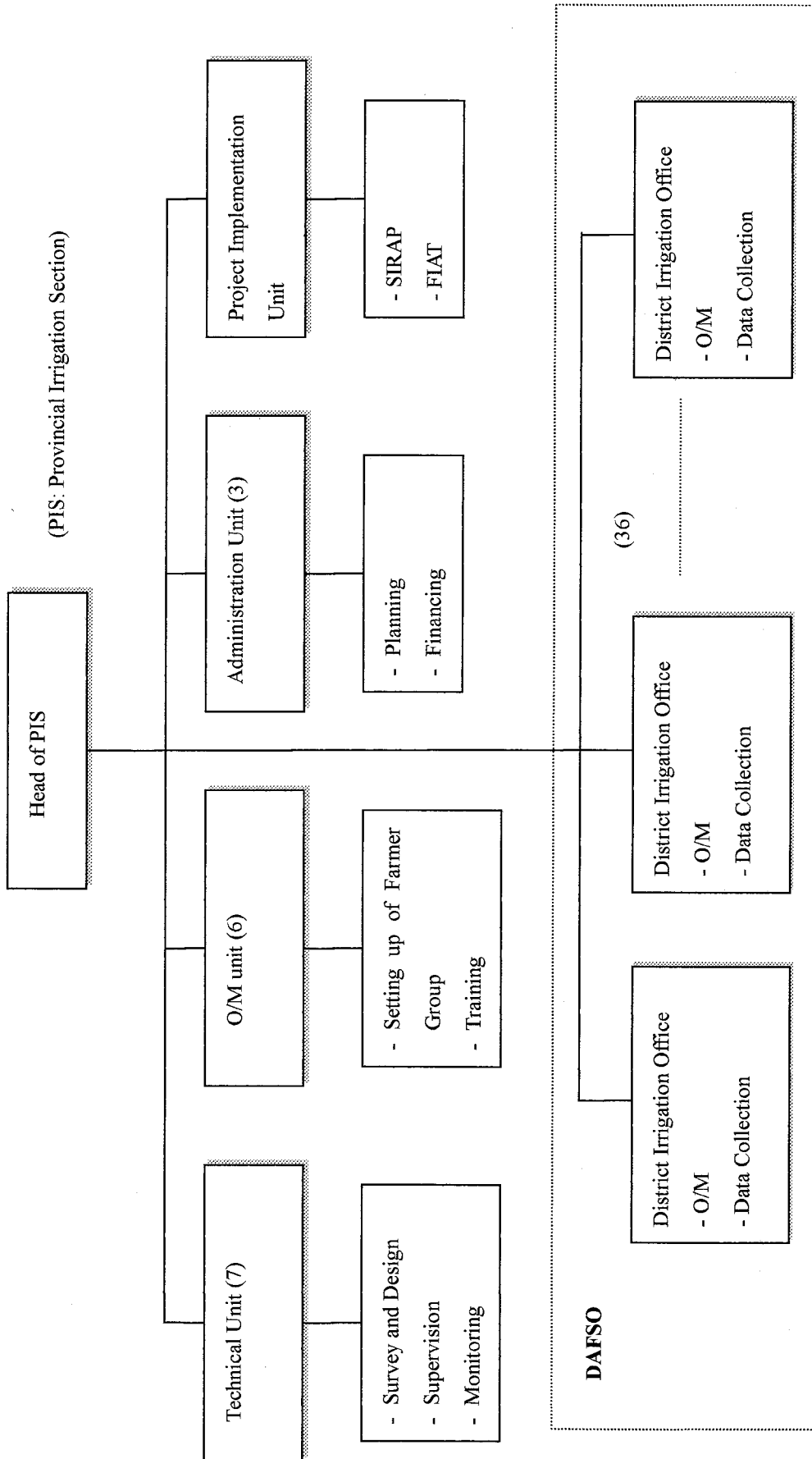
Province	The number of installed pump unit
Borikhamxay	116
Khammouane	210
Savannakhet	102
Total	428

Note : The number was counted by the Team based on the list of irrigation project of inventory survey. The number of on-going construction/planning was not included.

G.3. Organization of Agencies Concerned for Irrigation Development
G.3.1. Organization Structure of Department of Irrigation (1997)

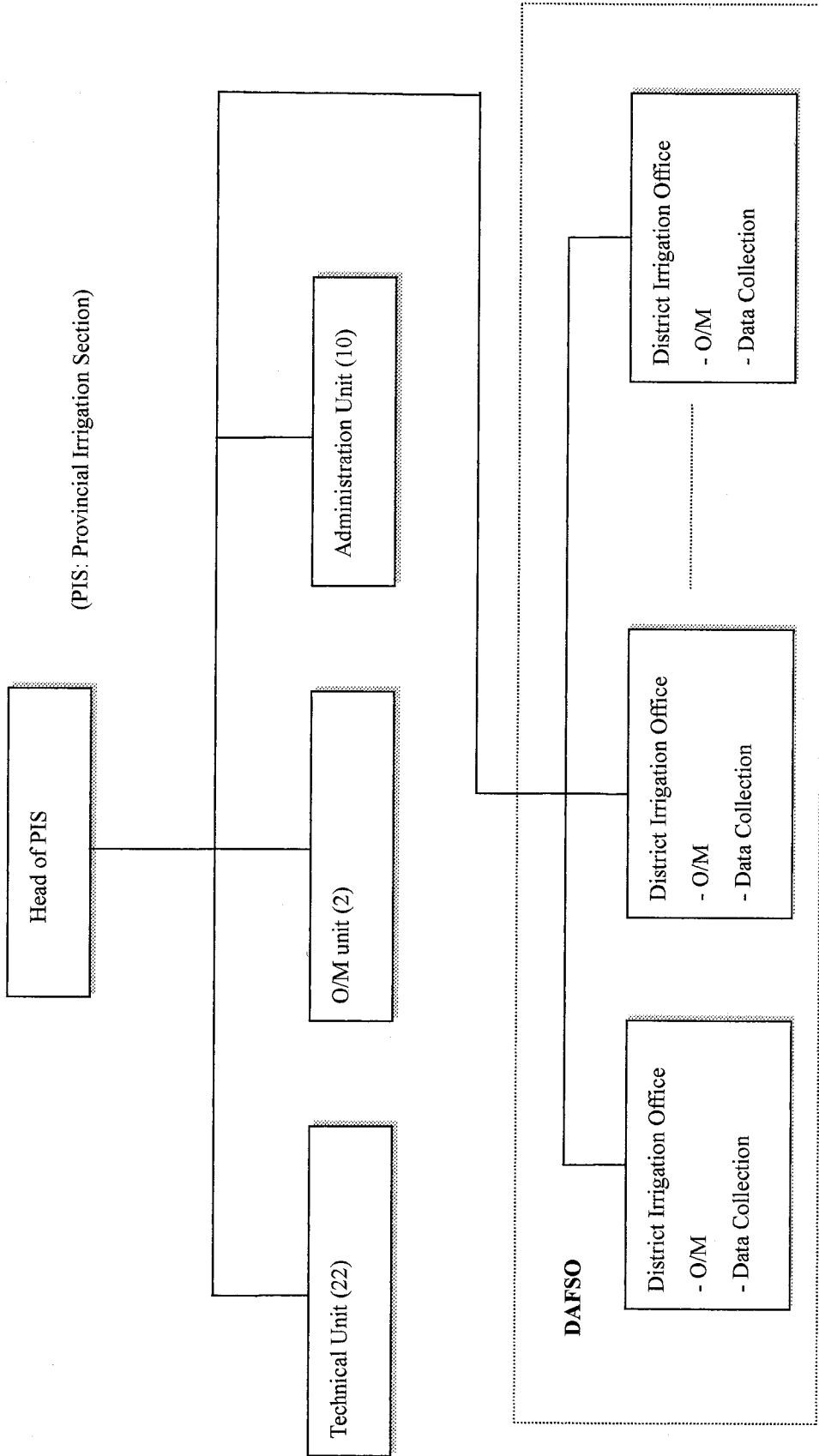


Organization Structure of the Department of Irrigation (1997)



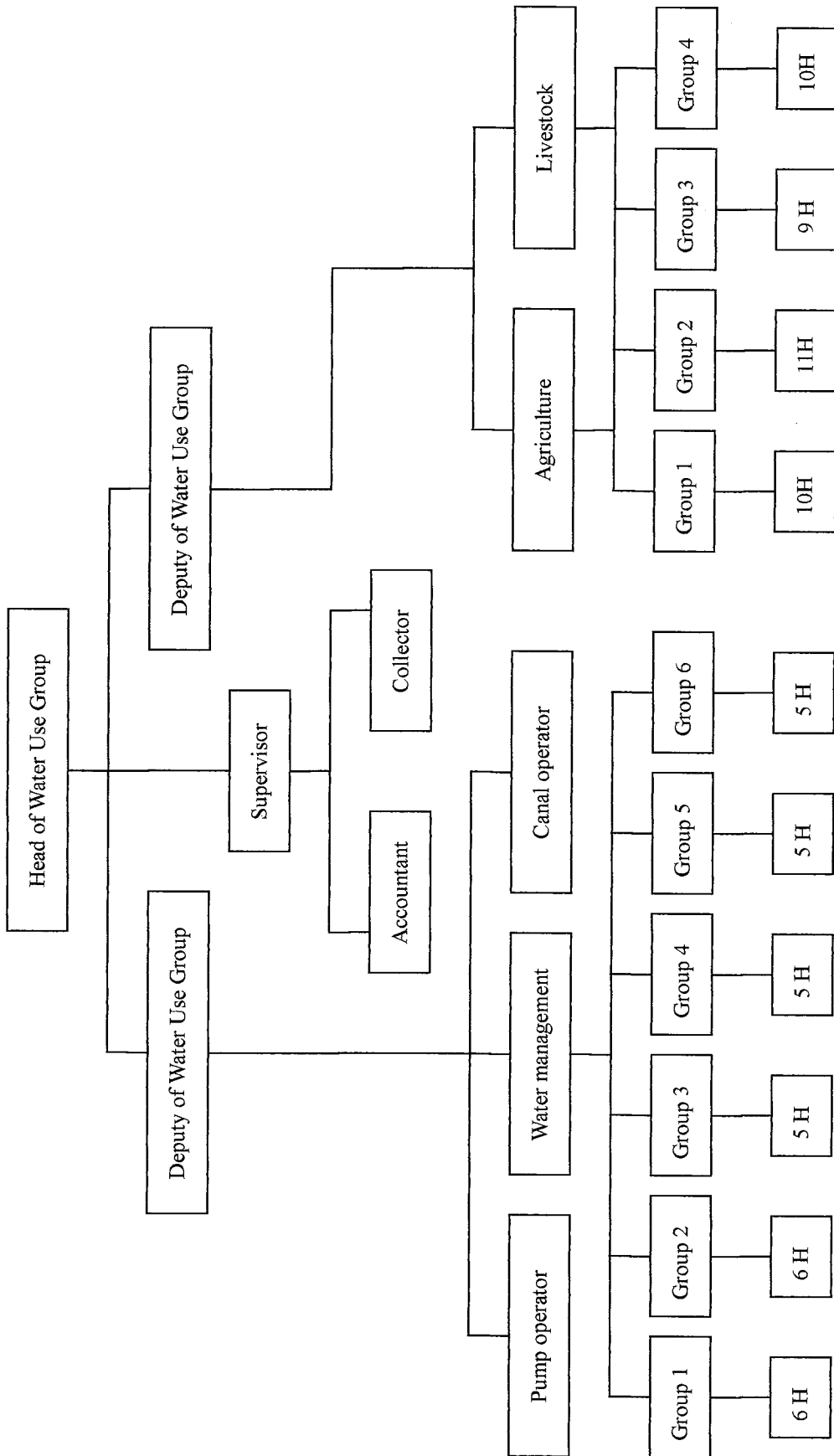
() : Number of Staff

Organization of Provincial Irrigation Section (Kammouane Provimve)



() : Number of Staff

Organization of Provincial Irrigation Section (Savannakhet Province)



H : Households

G.3.3. Organization of Hin Khan Water Use Group