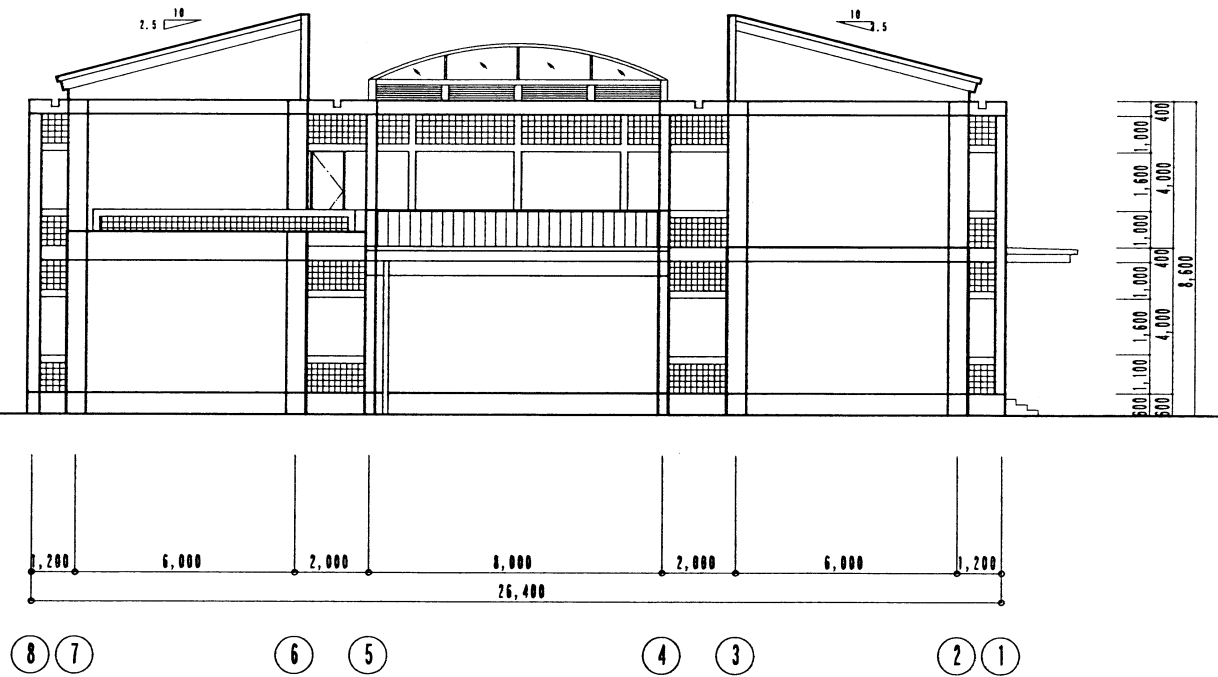


NORTH ELEVATION



SOUTH ELEVATION

PROJECT
 THE PROJECT FOR
 THE IMPROVEMENT OF THE TRANSPORT TECHNICAL
 AND PROFESSIONAL SCHOOL NO. 1
 IN THE SOCIALIST REPUBLIC OF VIETNAM

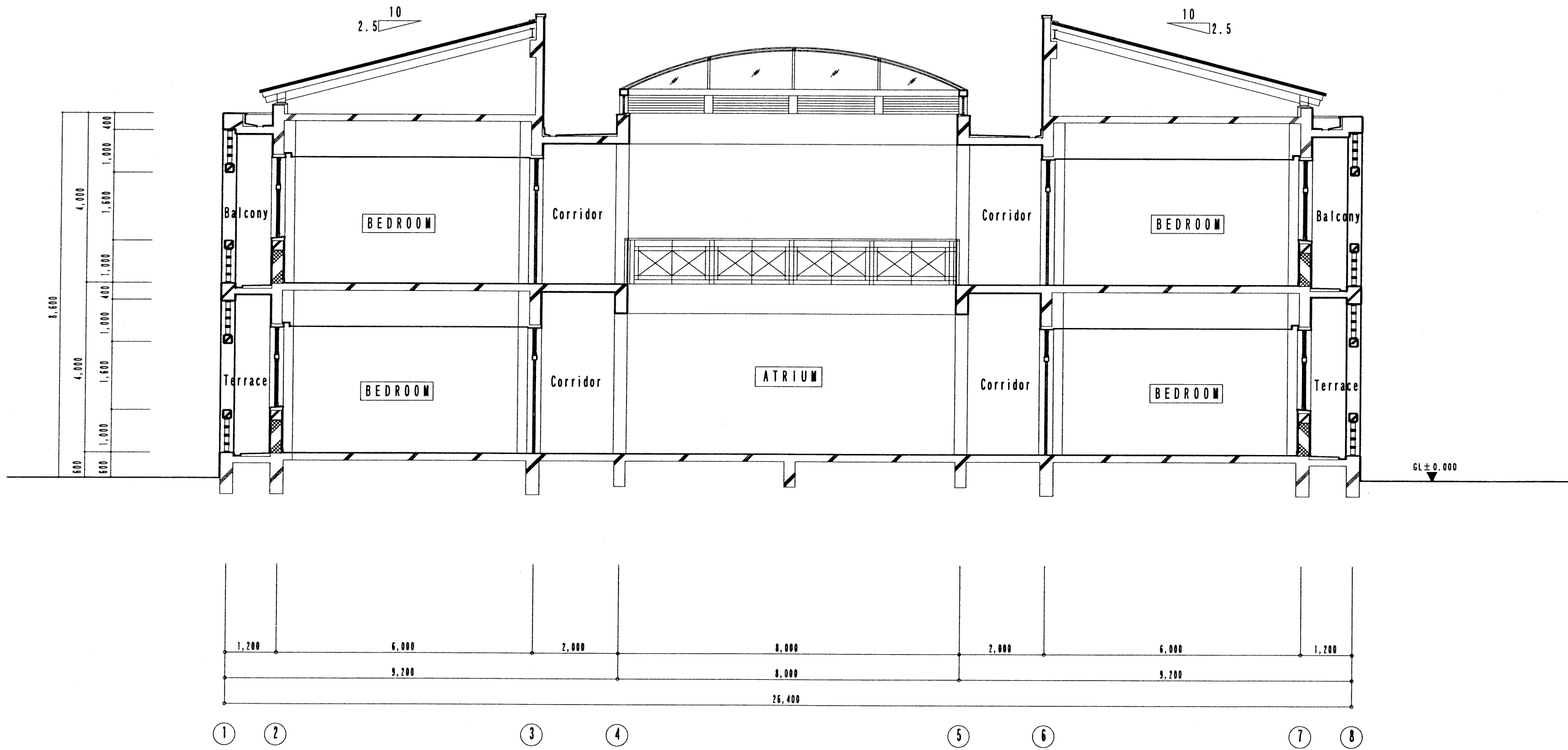
GENERAL NOTE

NO.	DATE	DESCRIPTION	BY	APP'D	CHECKED BY

SCALE: 1:200
 DATE: 18 FEB. 2008
 DRAWING BY: JPC
 CHECKED BY:

PROJECT TITLE: DORMITORY ELEVATION-2
 DESIGNED BY: PACIFIC CONSULTANTS INTERNATIONAL

DWG. NO.: D - 005



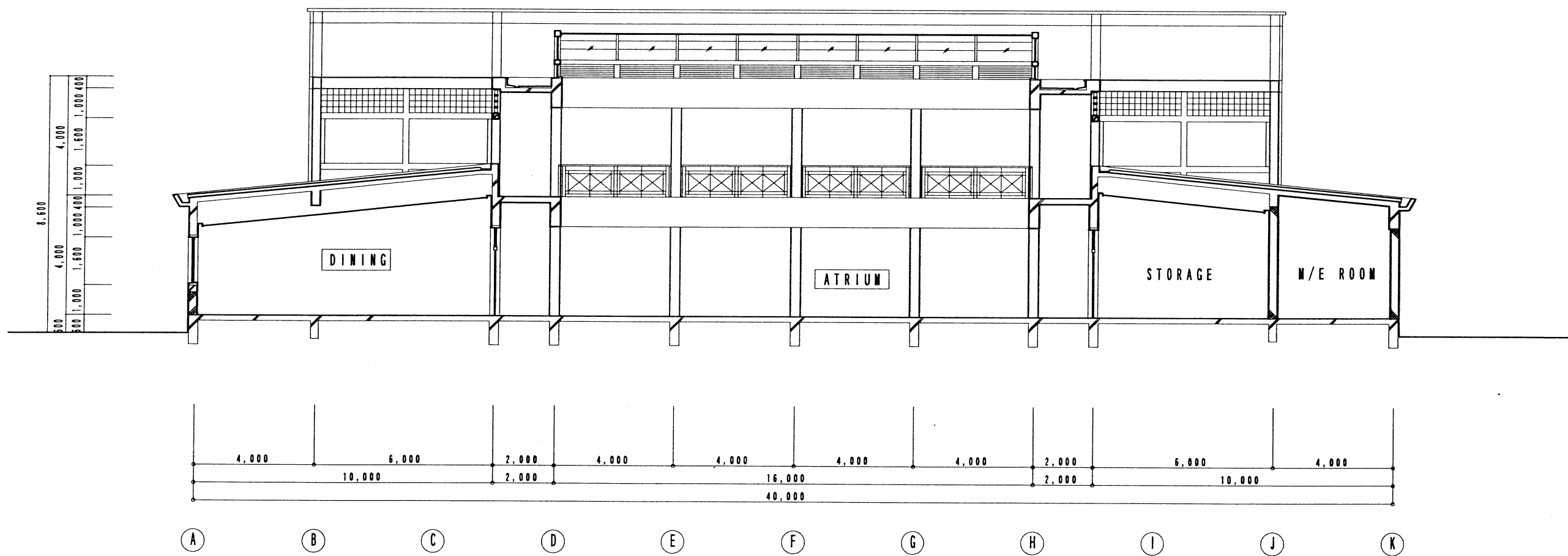
A-A' SECTION

PROJECT
 THE PROJECT FOR
 THE IMPROVEMENT OF THE TRANSPORT TECHNICAL
 AND PROFESSIONAL SCHOOL NO. 1
 IN THE SOCIALIST REPUBLIC OF VIETNAM

GENERAL NOTE

SCALE	1:100
DATE	10 FEB. 2000
DESIGNED BY	
CHECKED BY	
BY	
DATE	
DESCRIPTION	
REVISION	

FIG. TITLE
 DORMITORY SECTION-1
 DWG. NO.
 D - 006
 DESIGNED BY
 PACIFIC CONSULTANTS INTERNATIONAL



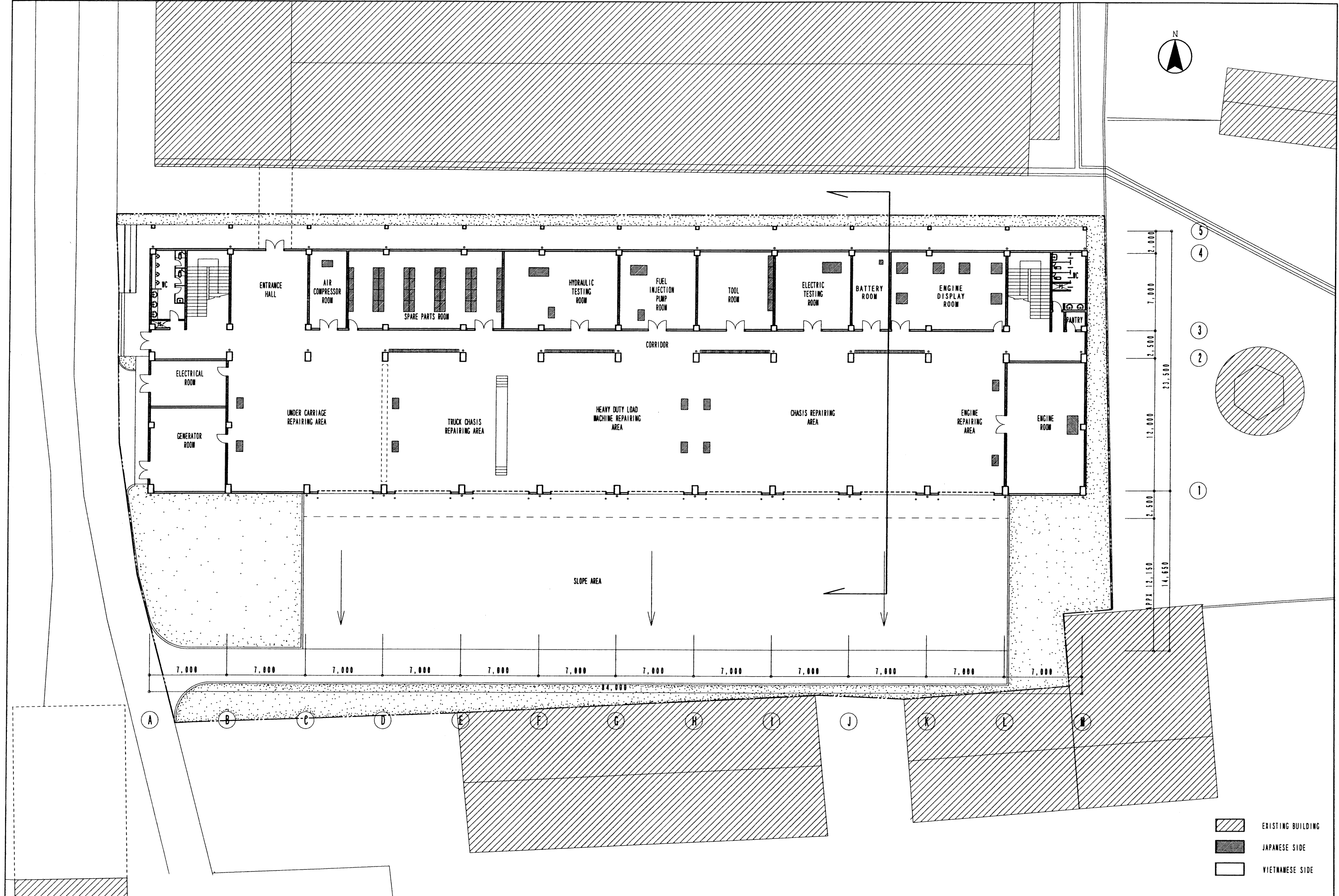
B-B' SECTION

PROJECT
 THE PROJECT FOR
 THE IMPROVEMENT OF THE TRANSPORT TECHNICAL
 AND PROFESSIONAL SCHOOL NO. 1
 IN THE SOCIALIST REPUBLIC OF VIETNAM

GENERAL NOTE

NO.	DATE	DESCRIPTION	BY	APP'D	ENGINEER

SCALE: 1:150
 DATE: 10 FEB. 2000
 DRAWING BY: /PC/ I
 CHECKED BY: /PC/ I
 PROJECT TITLE: DORMITORY SECTION-2
 SHEET NO: D-007
 DESIGNED BY: /PC/ I
 PACIFIC CONSULTANTS INTERNATIONAL



PROJECT: THE PROJECT FOR THE IMPROVEMENT OF THE TRANSPORT TECHNICAL AND PROFESSIONAL SCHOOL NO. 1 IN THE SOCIALIST REPUBLIC OF VIETNAM

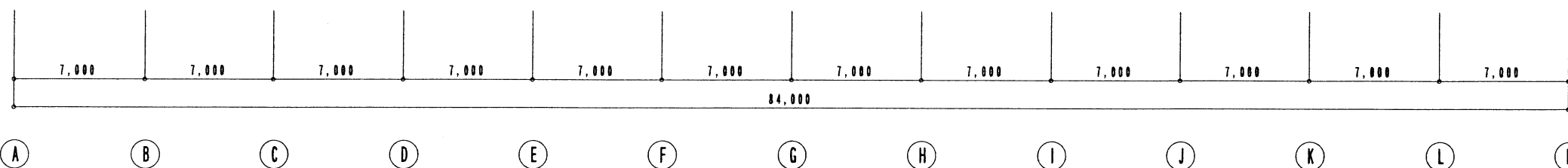
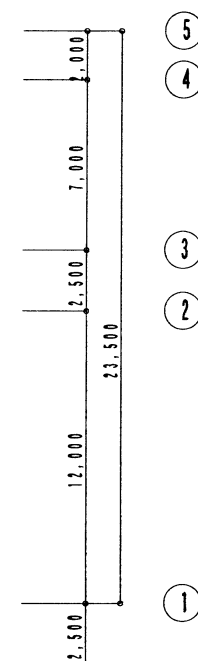
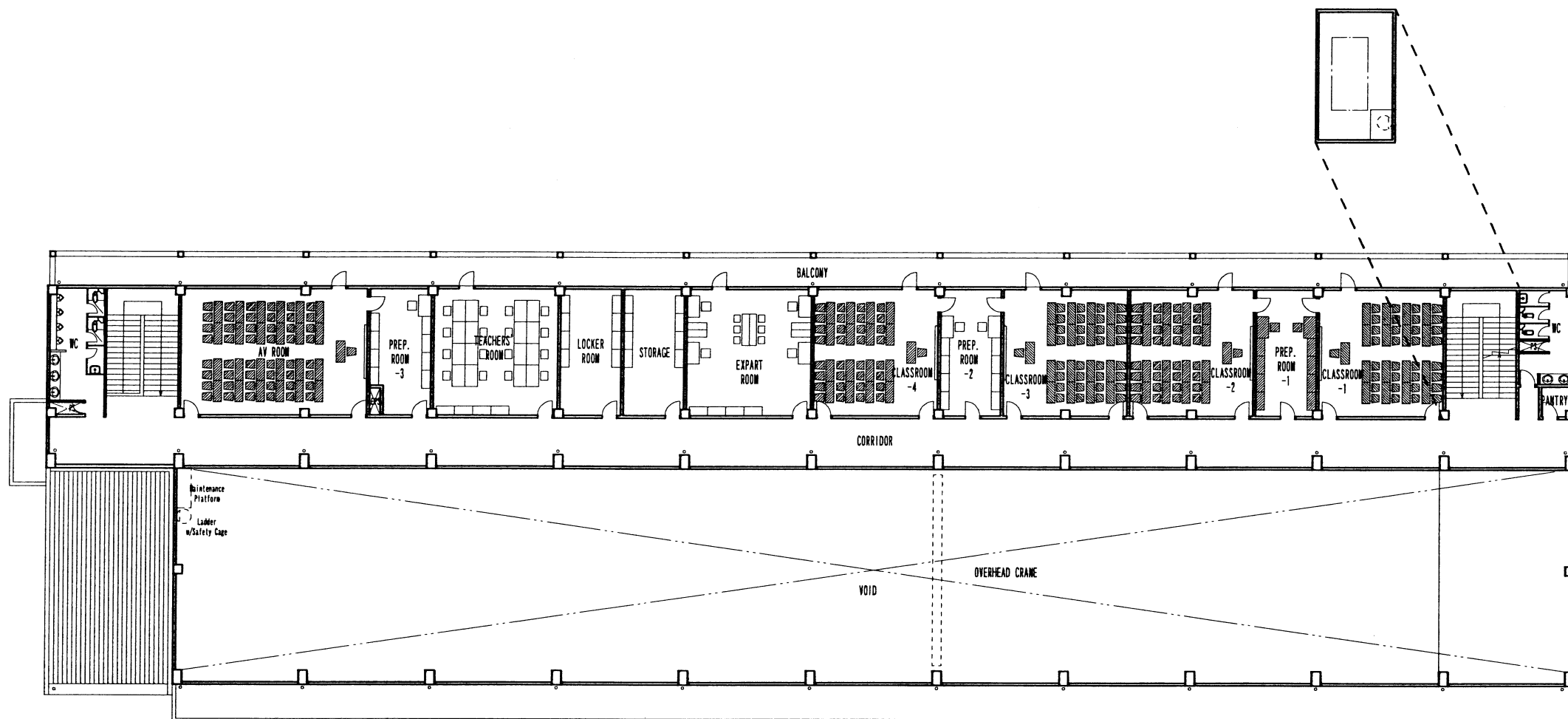
GENERAL NOTE

NO.	DATE	DESCRIPTION	BY	APP.	CHECKED BY

SCALE: 1:300
 DATE: 10 FEB. 2000
 DRAWING BY: /PCL/
 CHECKED BY: /PCL/

DOC. TITLE: TRAINING BUILDING 1st FLOOR PLAN
 DOC. NO: T-001

PACIFIC CONSULTANTS INTERNATIONAL



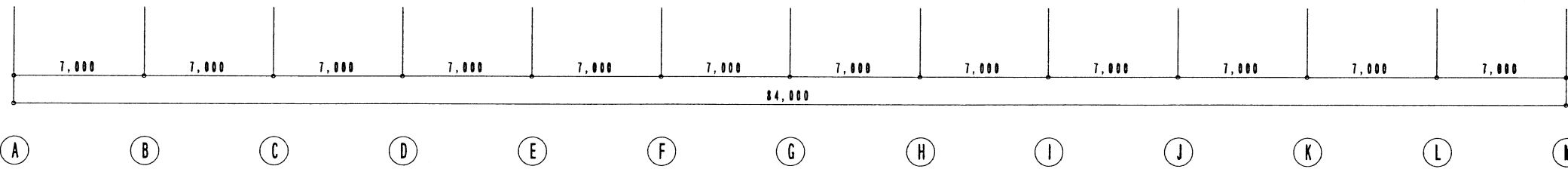
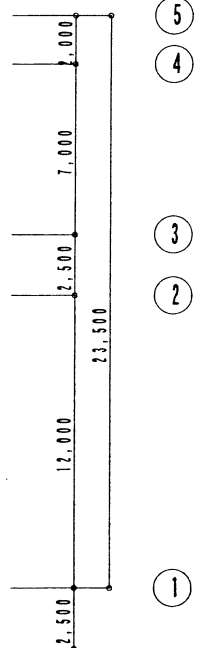
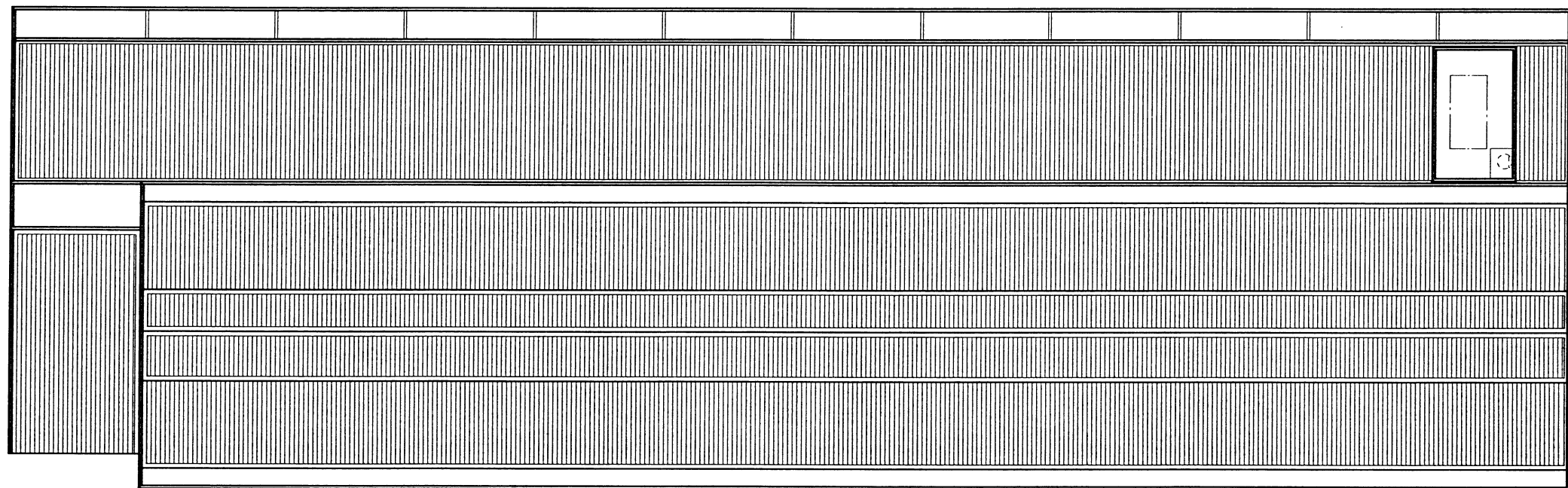
 JAPANESE SIDE
 VIETNAMESE SIDE

PROJECT THE PROJECT FOR
 THE IMPROVEMENT OF THE TRANSPORT TECHNICAL
 AND PROFESSIONAL SCHOOL NO. 1
 IN THE SOCIALIST REPUBLIC OF VIETNAM

GENERAL NOTE

NO.	DATE	DESCRIPTION	BY	APP.

SCALE 1:300
 DATE 10 FEB. 2000
 DRAWING BY /PCL
 DESIGNED BY
 CHECKED BY
 Dwg. No. T-002
TRAINING BUILDING
2nd FLOOR PLAN
 PACIFIC CONSULTANTS INTERNATIONAL

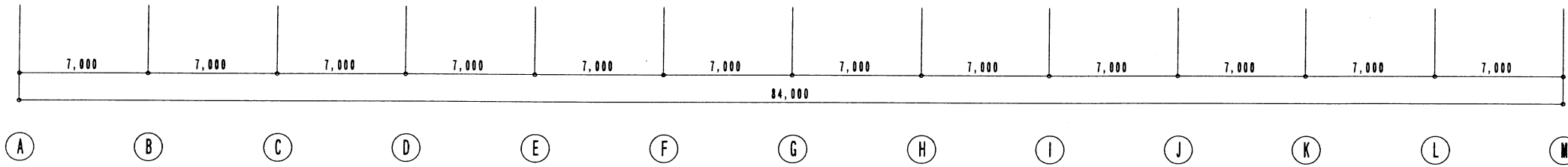
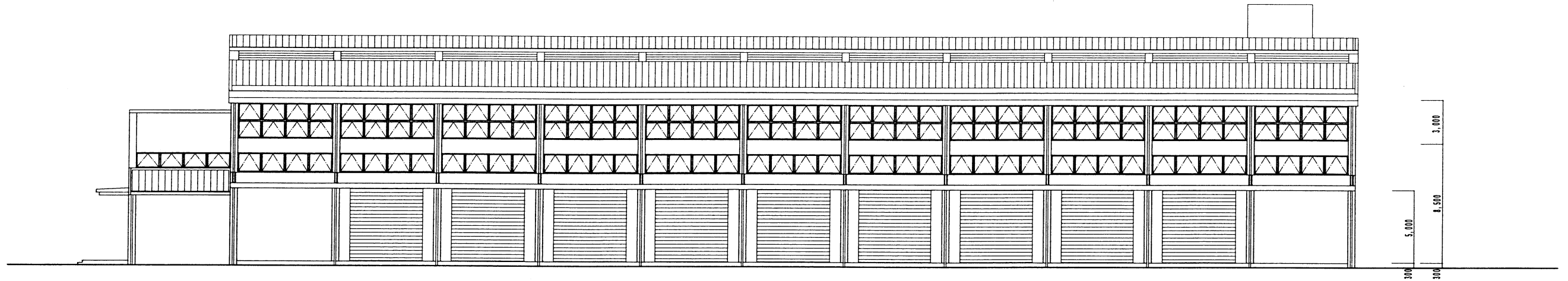


PROJECT: THE PROJECT FOR THE IMPROVEMENT OF THE TRANSPORT TECHNICAL AND PROFESSIONAL SCHOOL NO. 1 IN THE SOCIALIST REPUBLIC OF VIETNAM

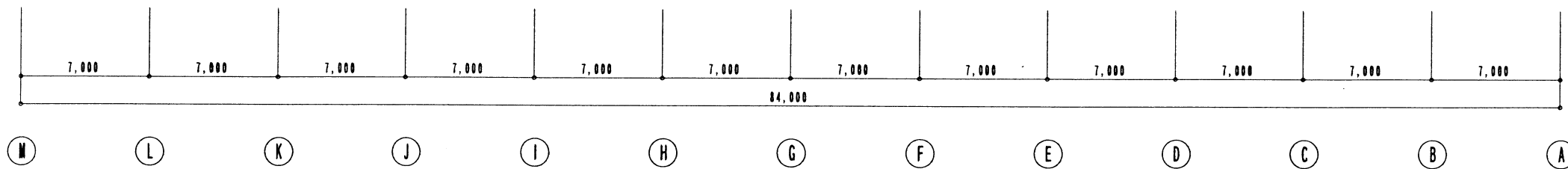
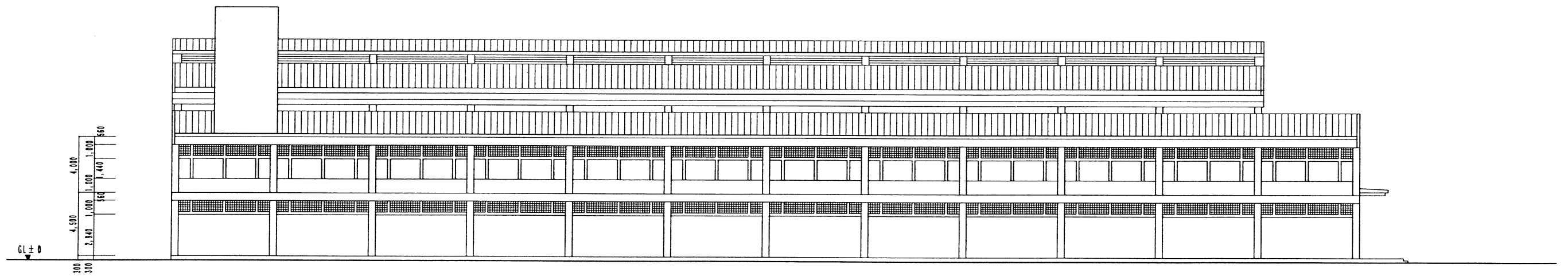
GENERAL NOTE

NO.	DATE	DESCRIPTIONS	BY	APP'D	CHECKED BY

SCALE: 1:300
 DATE: 18 FEB. 2000
 DRAWING BY: /PCS
 CHECKED BY: /PCS
 SHEET TITLE: TRAINING BUILDING ROOF FLOOR PLAN
 SHEET NO.: T - 003
 DESIGNED BY: PACIFIC CONSULTANTS INTERNATIONAL



SOUTH ELEVATION



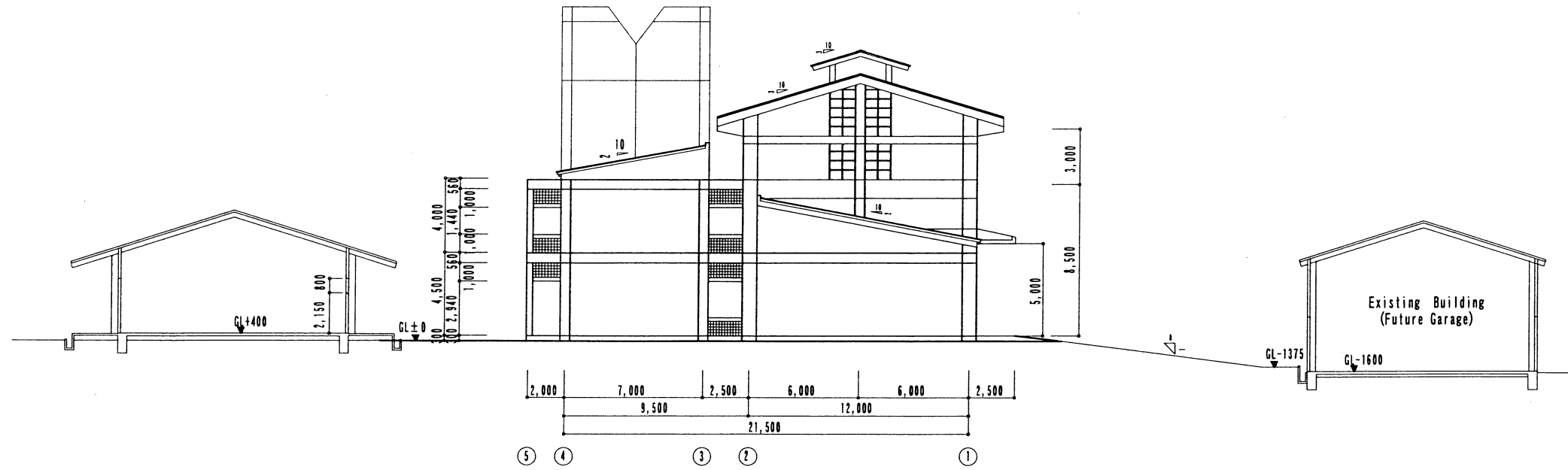
NORTH ELEVATION

PROJECT
 THE PROJECT FOR
 THE IMPROVEMENT OF THE TRANSPORT TECHNICAL
 AND PROFESSIONAL SCHOOL NO. 1
 IN THE SOCIALIST REPUBLIC OF VIETNAM

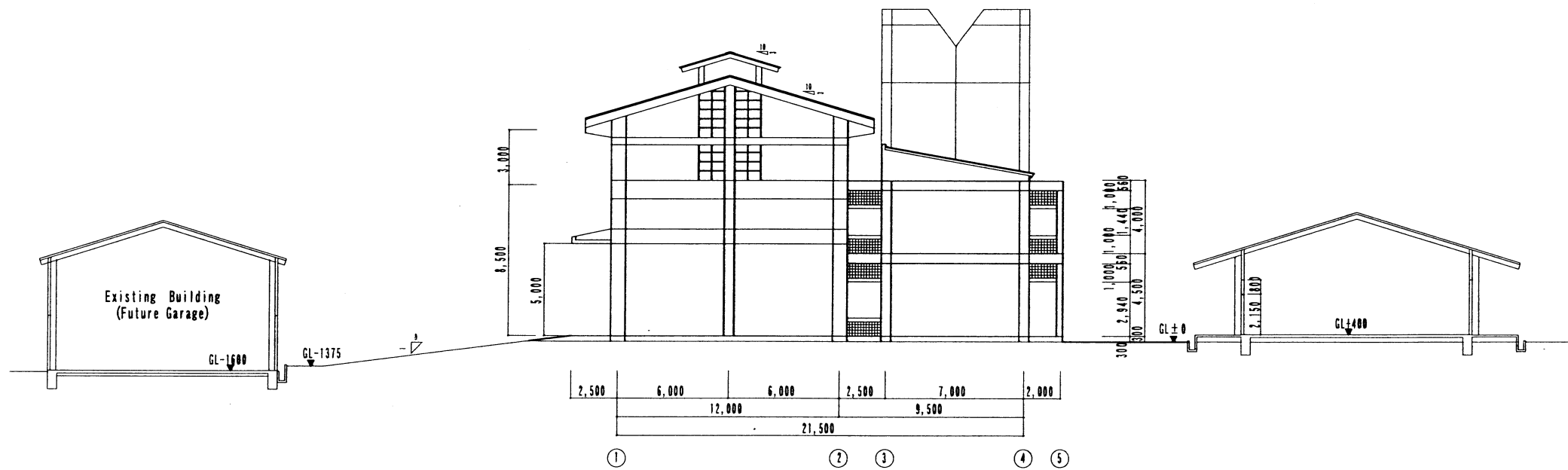
GENERAL NOTE

NO.	DATE	DESCRIPTIONS REVISIONS	BY	APP'D	CHECKED BY

SCALE
 1:300
 DATE
 10 FEB. 1988
 DRAWING BY
 /PC/ I
 CHECKED BY
 /PC/ I
 DWG. TITLE
 TRAINING BUILDING
 2nd FLOOR PLAN
 DWG. NO.
 T - 004
 DESIGNED BY
 PACIFIC CONSULTANTS INTERNATIONAL



WEST ELEVATION



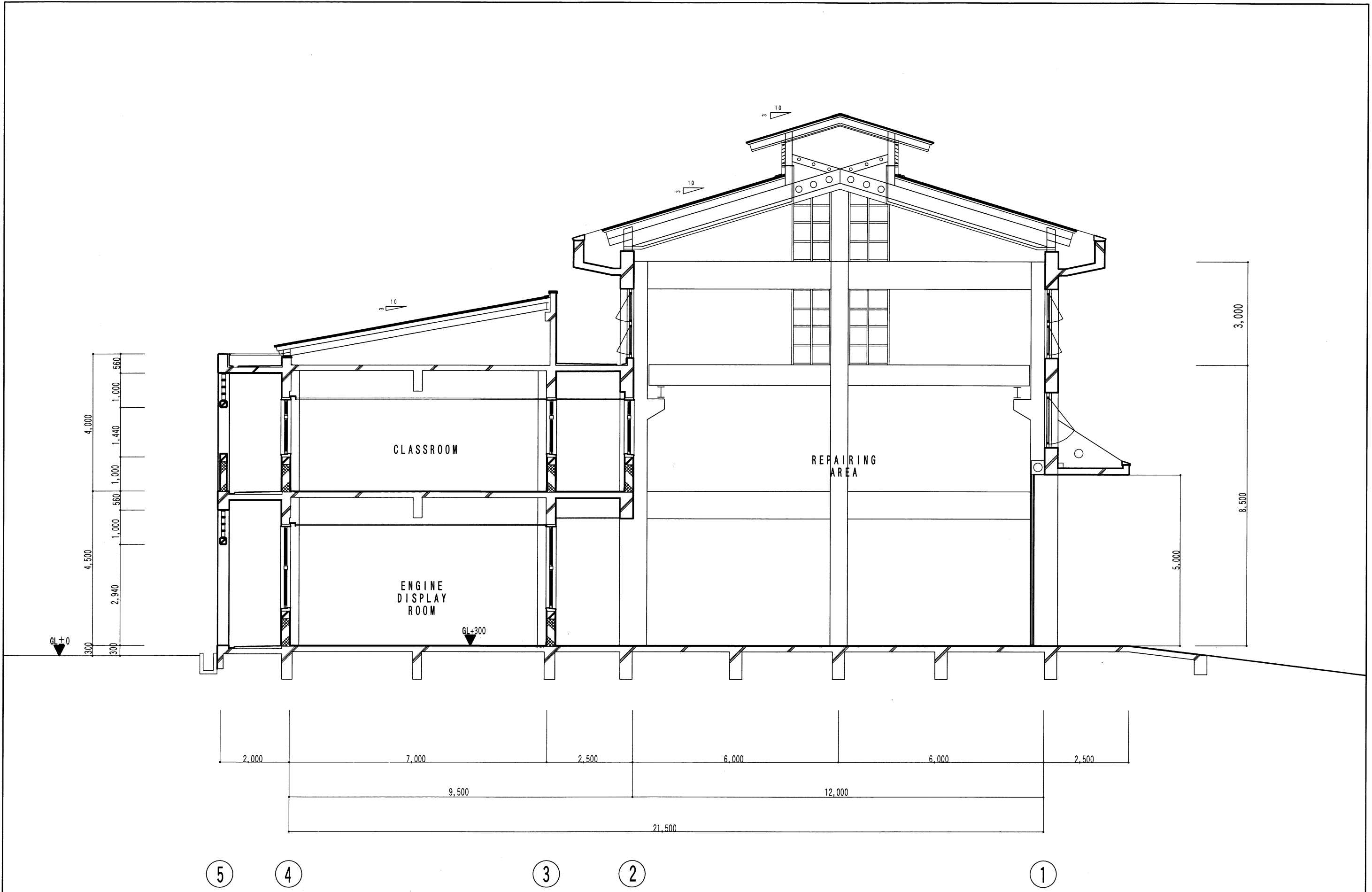
EAST ELEVATION

PROJECT: THE PROJECT FOR THE IMPROVEMENT OF THE TRANSPORT TECHNICAL AND PROFESSIONAL SCHOOL NO. 1 IN THE SOCIALIST REPUBLIC OF VIETNAM

GENERAL NOTE

NO.	DATE	DESCRIPTION	BY	APP'D	CHECKED BY

SCALE: 1:300
 DATE: 10 FEB. 2008
 DRAWING BY: JPEL
 CHECKED BY:
 PROJECT TITLE: TRAINING BUILDING ELEVATION-2
 DESIGNER BY: PACIFIC CONSULTANTS INTERNATIONAL
 DMC NO.: T-005



PROJECT
 THE PROJECT FOR
 THE IMPROVEMENT OF THE TRANSPORT TECHNICAL
 AND PROFESSIONAL SCHOOL NO.1
 IN THE SOCIALIST REPUBLIC OF VIETNAM

GENERAL NOTE

NO.	DATE	DESCRIPTIONS	BY	APP'D	CHECKED BY

SCALE 1:100
 DATE 10 FEB. 2000
 DRAWING BY /PCI
 DESIGNED BY
 PACIFIC CONSULTANTS INTERNATIONAL
 DWG. TITLE TRAINING BUILDING SECTION
 DWG. NO. T - 006

計画機材リスト

No.	機材名	仕仕様	数量
(ワークショップ機材)			
1	天井クレーン	5.0 Ton	1
2	燃料噴射ポンプテスター	W/ bosh & cat type Accessory	1
3	油圧試験機	W/Accessory	1
4	スターター、ジェネレーター試験装置	W/Accessory	1
5	エンジン馬力試験機	W/Accessory	1
6	給油機器	W/Accessory	1
7	油圧ジャッキ	10 Ton	2
8	油圧プレス	100 Ton	1
9	高圧洗浄機	W/Accessory	1
10	エンジンリペアスタンド	W/Accessory	1
(工具)			
1-1	メカニック用工具	KA 081010	1
1-2	メカニック用工具	TA 030970	5
2	スペシャル工具		1
3	一般工具		1
(測定機器)			
1	測定機器		1
(教育教材)			
1	エンジン	カットモデル (スーパーチャージャー付きディーゼルエンジン)	1
2	トランスミッション	カットモデル (パワーシフト)	1
3	システムボード	電気	1
4	その他コンポーネント	カットモデル	1
5	プラスチック教材	トルクコンバーターなど	1
6-1	システムボード	油圧	1
(溶接/板金作業用機材)			
1	C02 セミオートマチックウエルダー	3P, 300A, 380V, 50 HZ w/accessory	1
2	エアープラズマ切断機	3P, 7.7 KVA w/accessory	1
3	エアークンプレッサー	3P, 3.7 kw w/accessory	1
4	ガスウエルダー	W/ Accessory	1
5	ベンチグラインダー	220V, 50 HZ	1
6	ポータブルグラインダー	220V, 50 HZ	2
7	交流アークウエルダー	3P, 300A, 380V, 50 HZ w/accessory	2
(機材加工機材)			
1	旋盤	380V, 50 HZ, 3P	1
2	アップライトボール盤	380V, 50 HZ, 3P	1
3	高速切断機	380V, 50 HZ, 3P	1
(車両用機材)			
1	タイヤ交換機	W/Accessory	1
2	バッテリー充電器	W/Accessory	1
(車両)			
1	トラッククレーン	Not less than 25 tons	1
2	トラッククレーン	Not less than 25 tons	1
3	ダンプトラック	4 ton	1
4	マイクロバス	33 Seats	1
5	点検パトロール車	4 WD	2
(視聴覚 機材)			
1	ビデオカメラ	220V, 50 HZ	1
2	ビデオレコーダー	220V, 50 HZ	2
3	ビデオモニター	220V, 50 HZ	4
4	ビデオ編集器	220V, 50 HZ	1
5	オーバーヘッドプロジェクター	220V, 50 HZ	3
6	スクリーン		3
7	AV関連機器	220V, 50 HZ	1