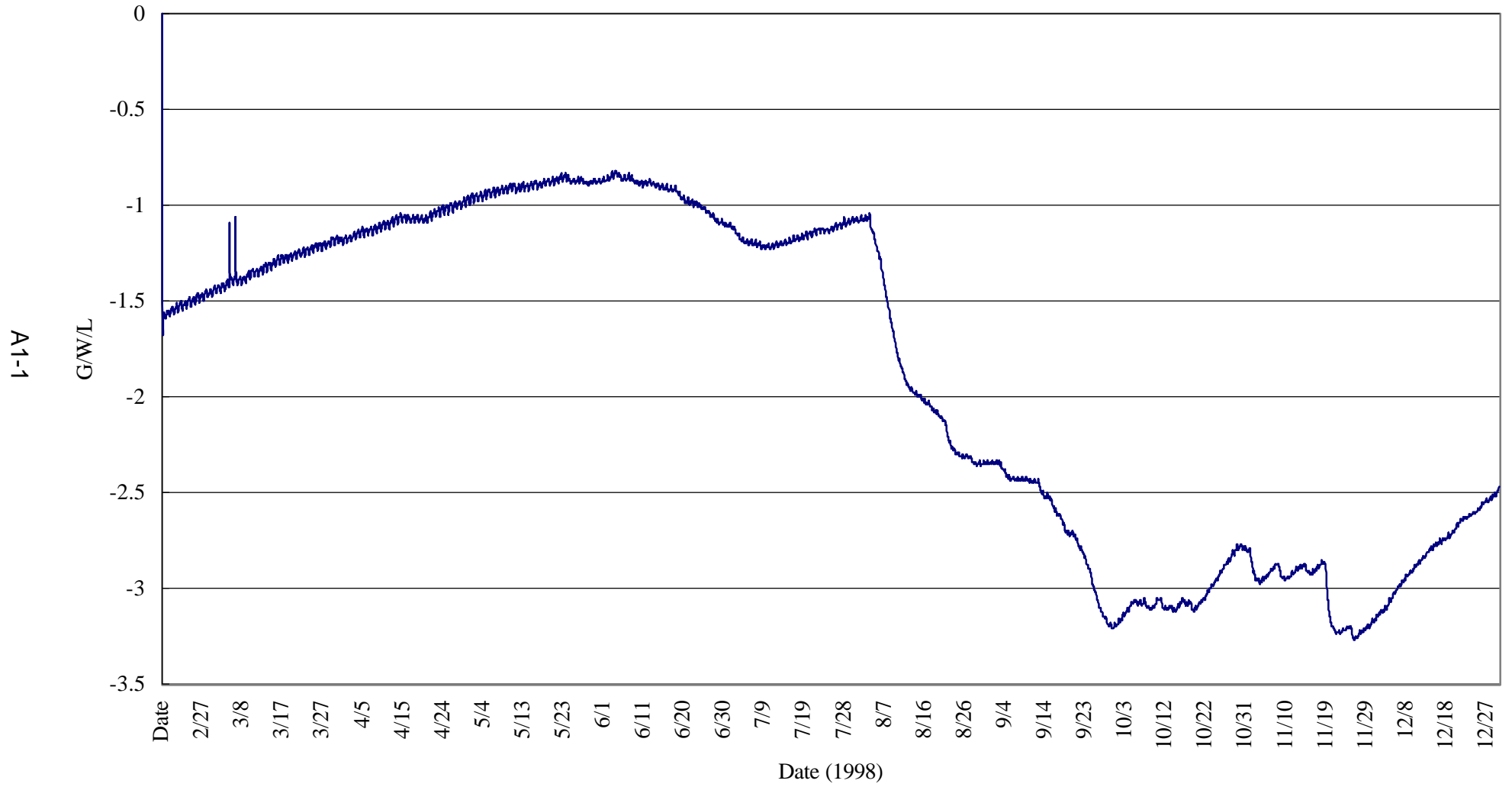


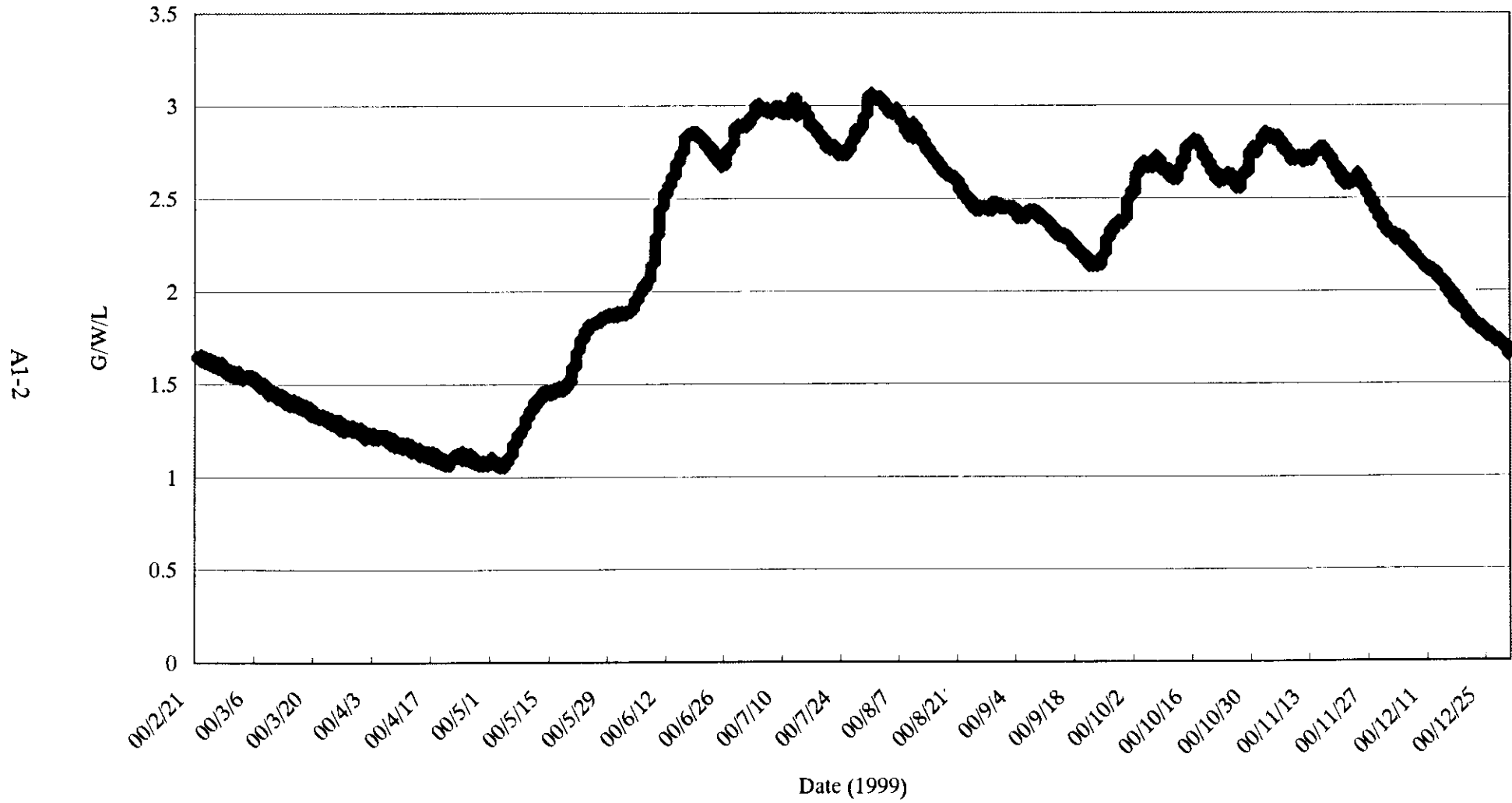
## **ATTACHMENT-1**

MONITORING RECORDS (G/W/L AND LAND MOVEMENT)

# Monitoring Record of WT3

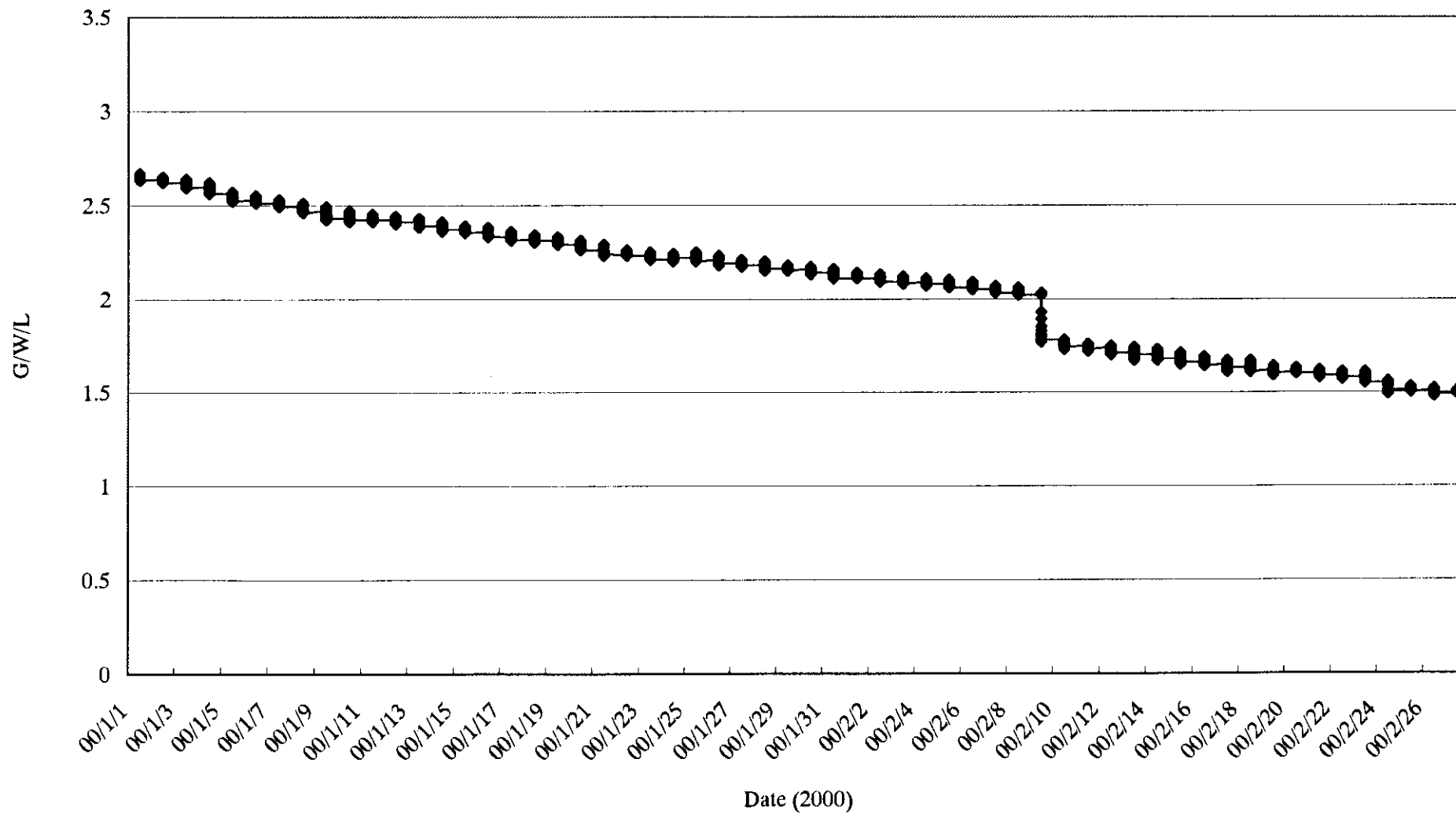


# Monitoring Record of WT3

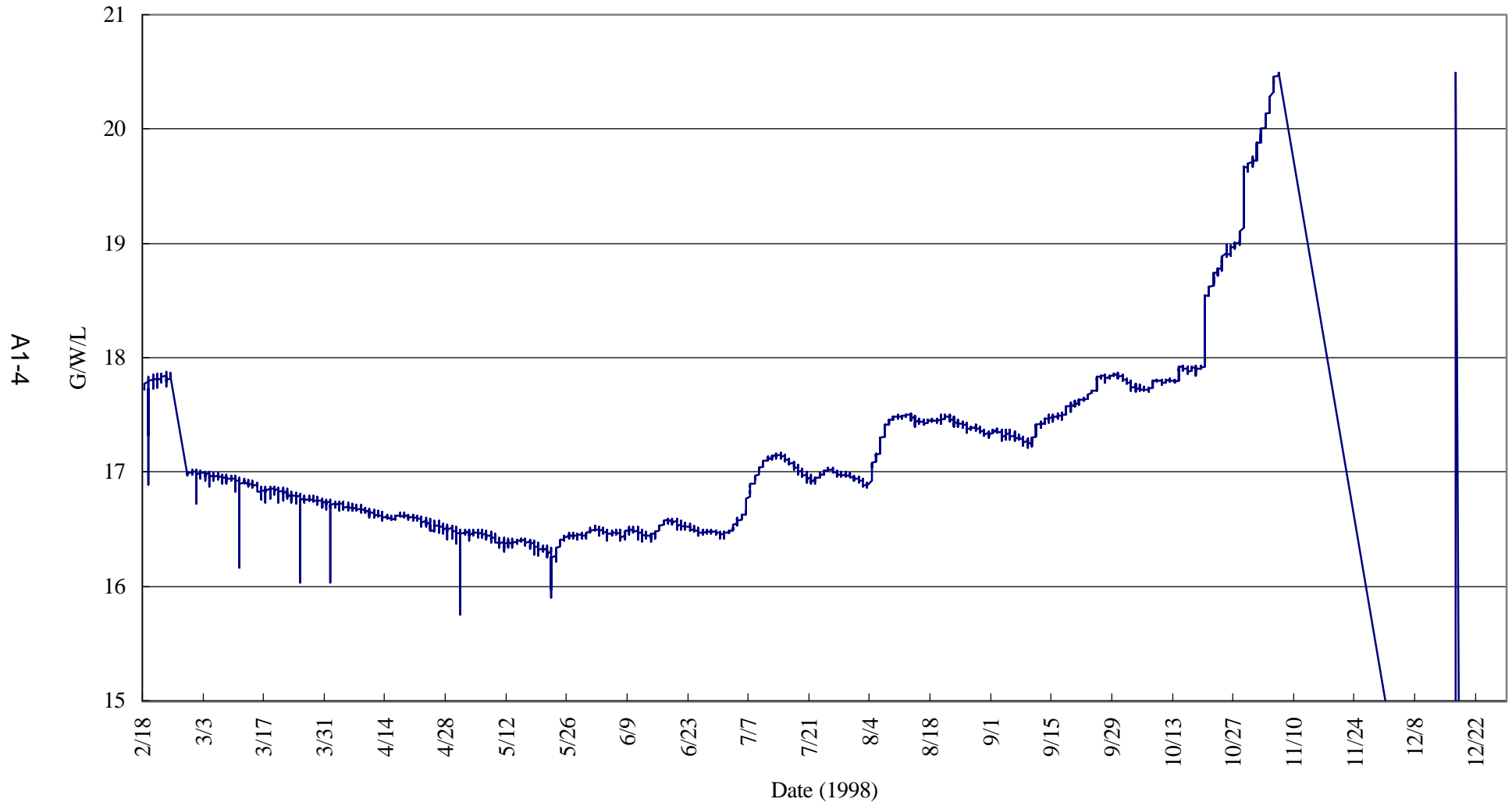


Monitoring Record of WT3

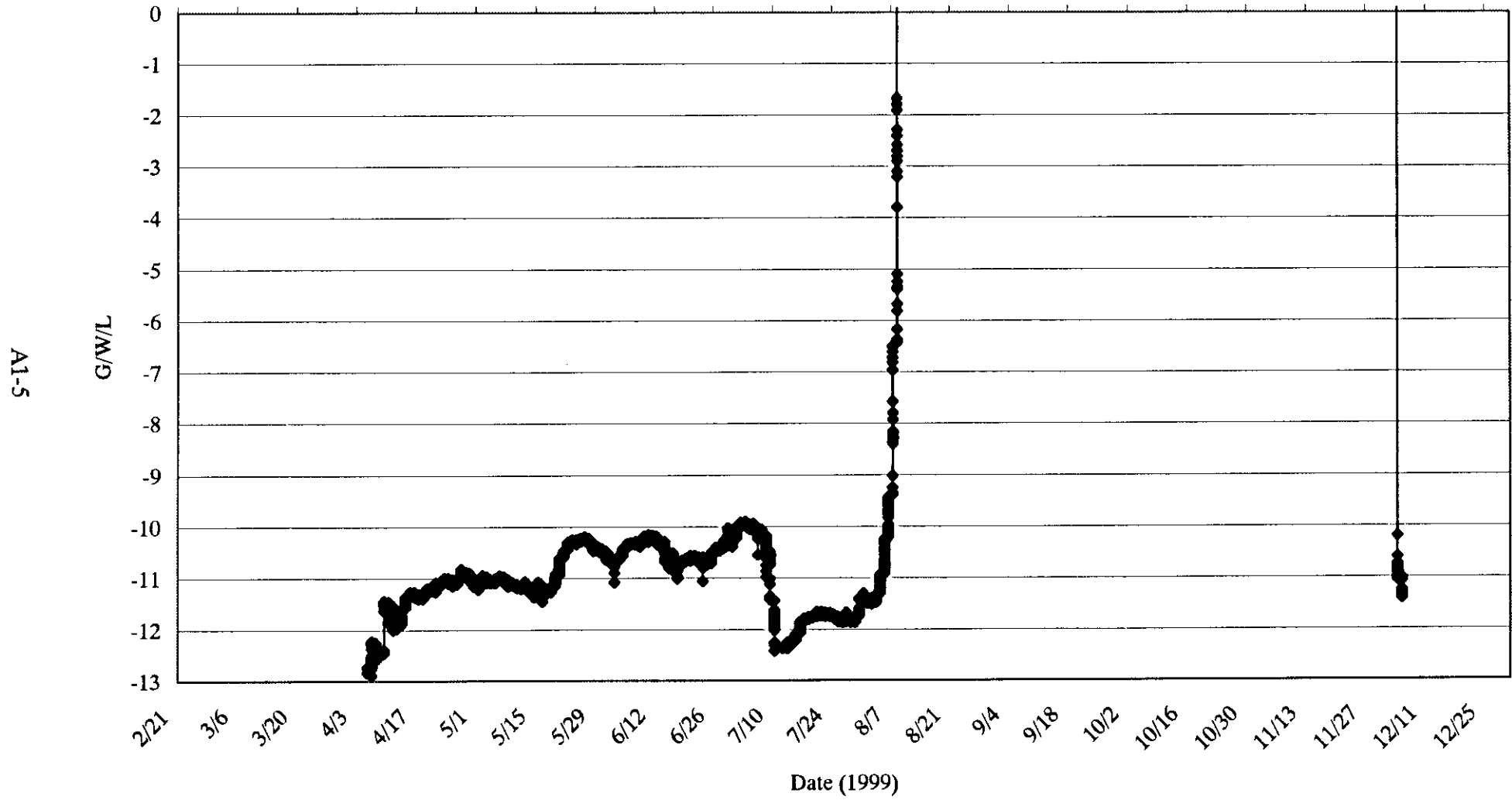
A1-3



# Monitoring Record of WT4



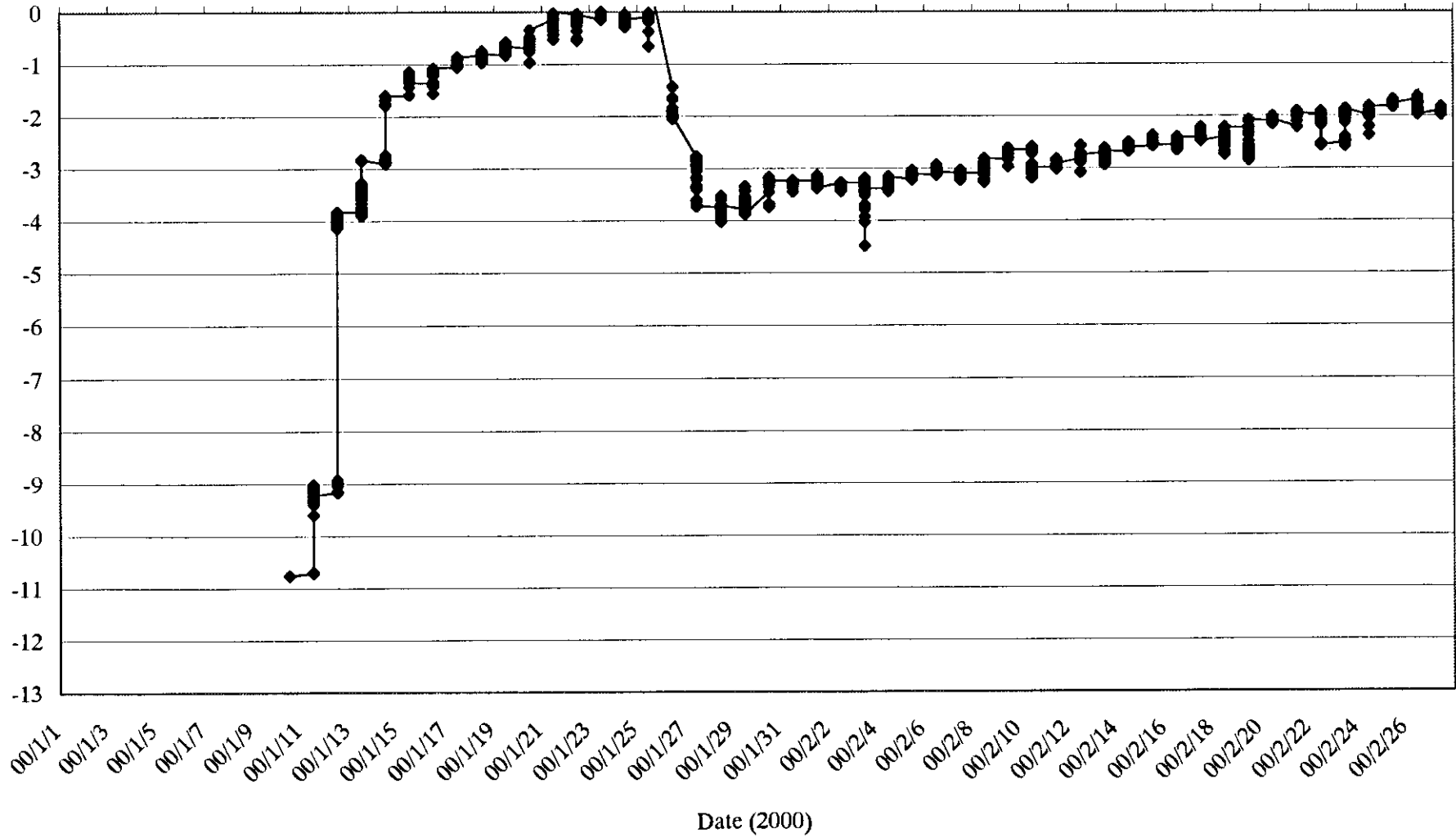
Monitoring Record of WT4



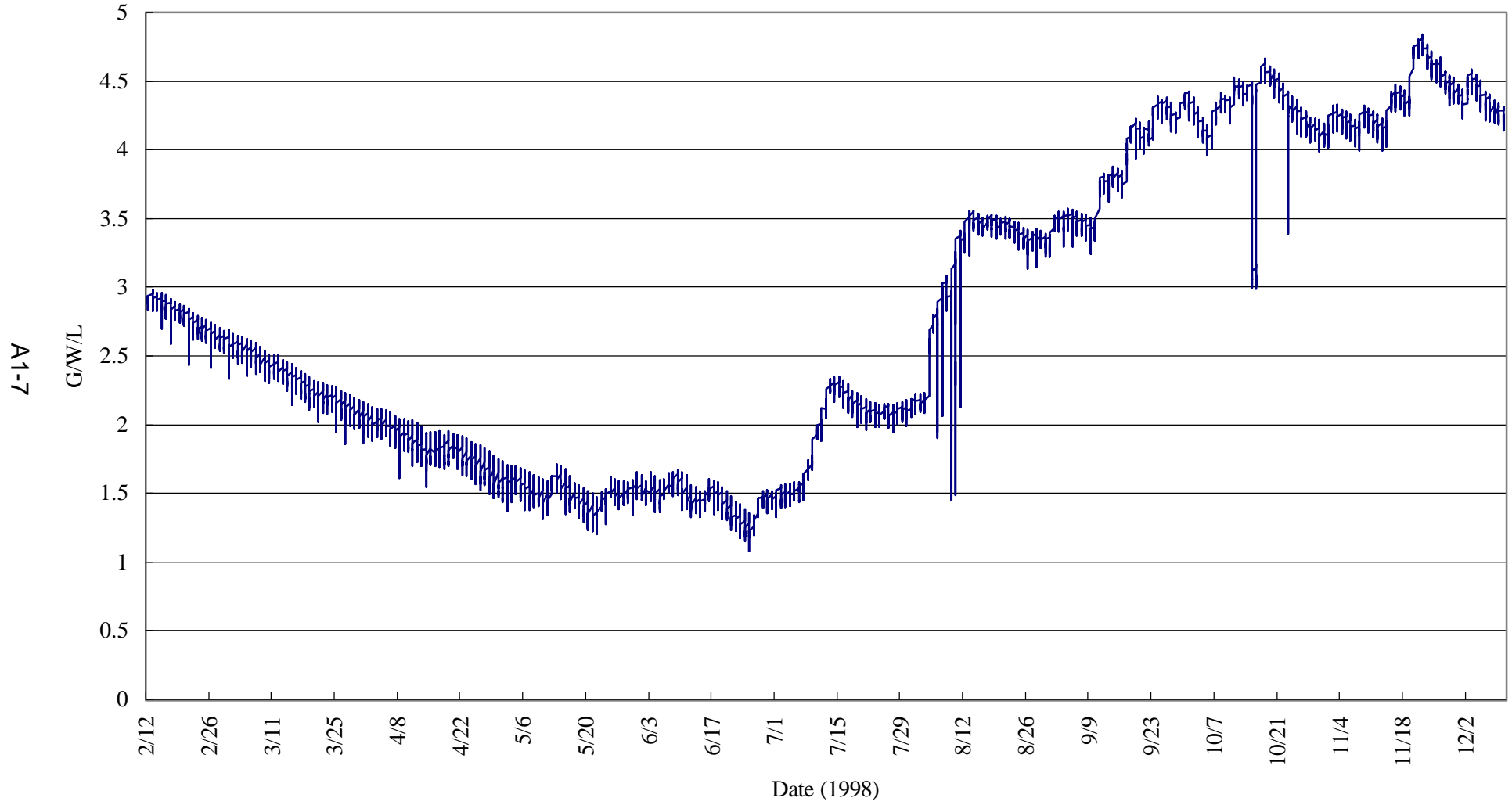
Monitoring Record of WT4

A1-6

G/W/L



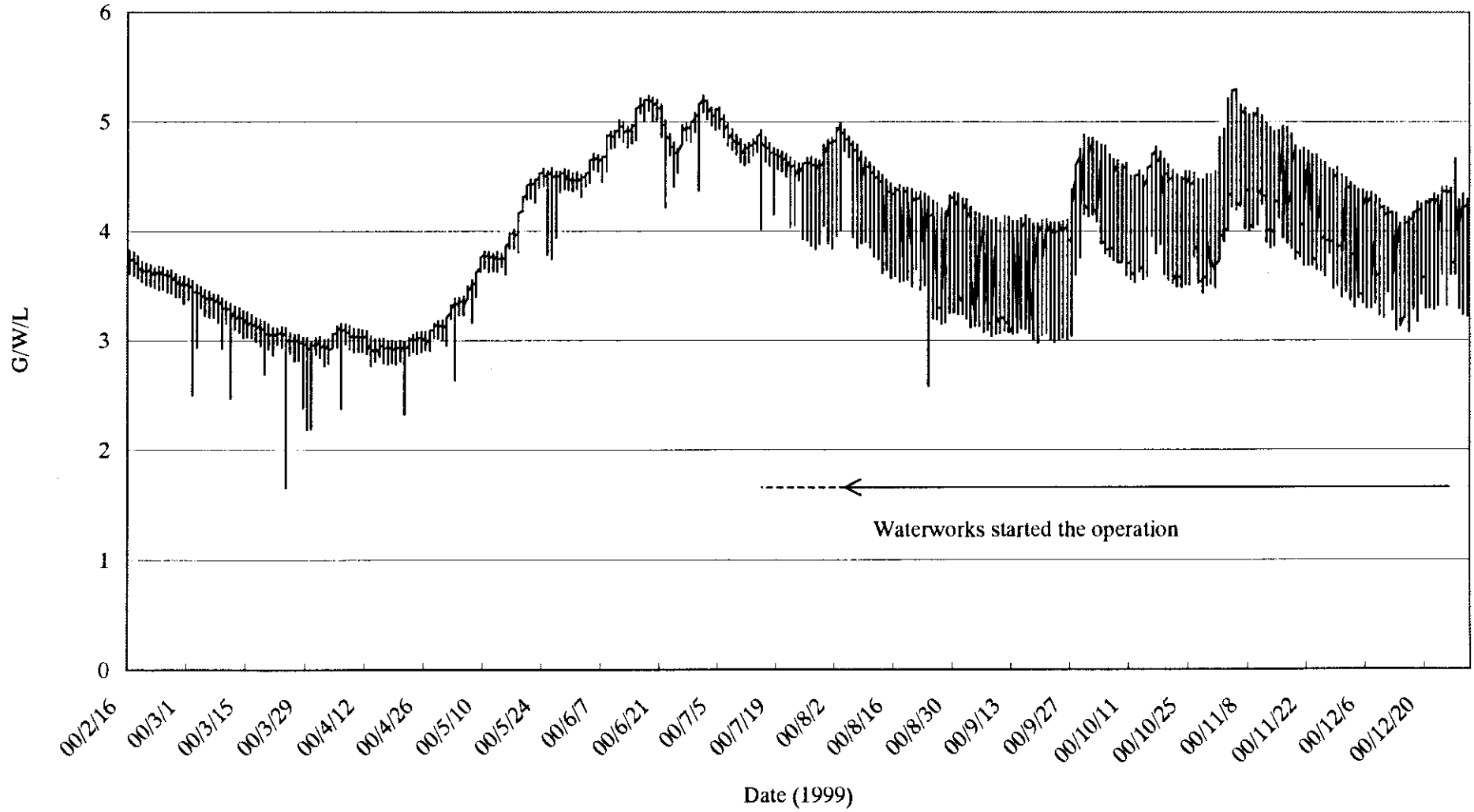
Monitoring Record of WT5





Monitoring Record of WT5

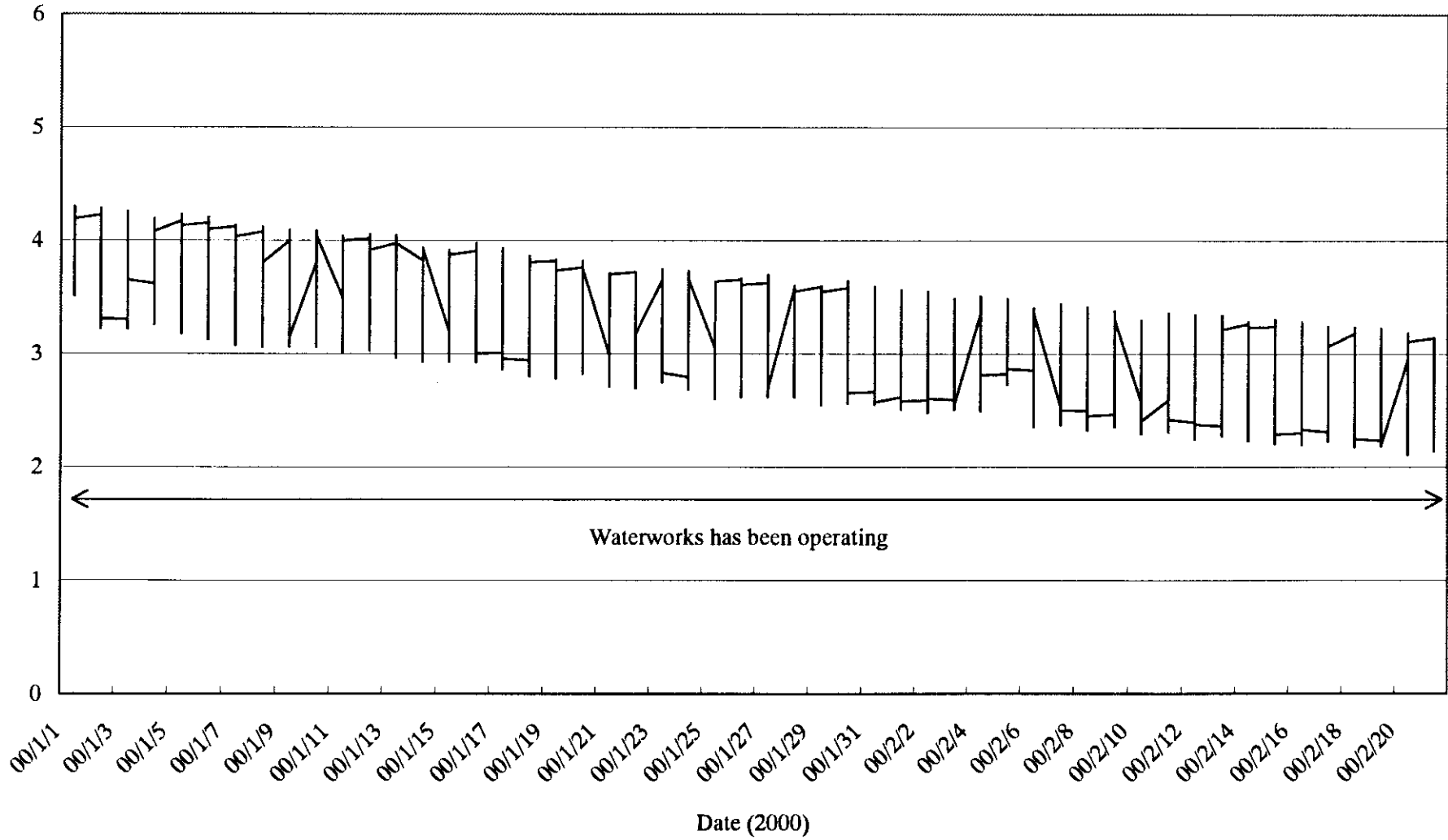
A1-8



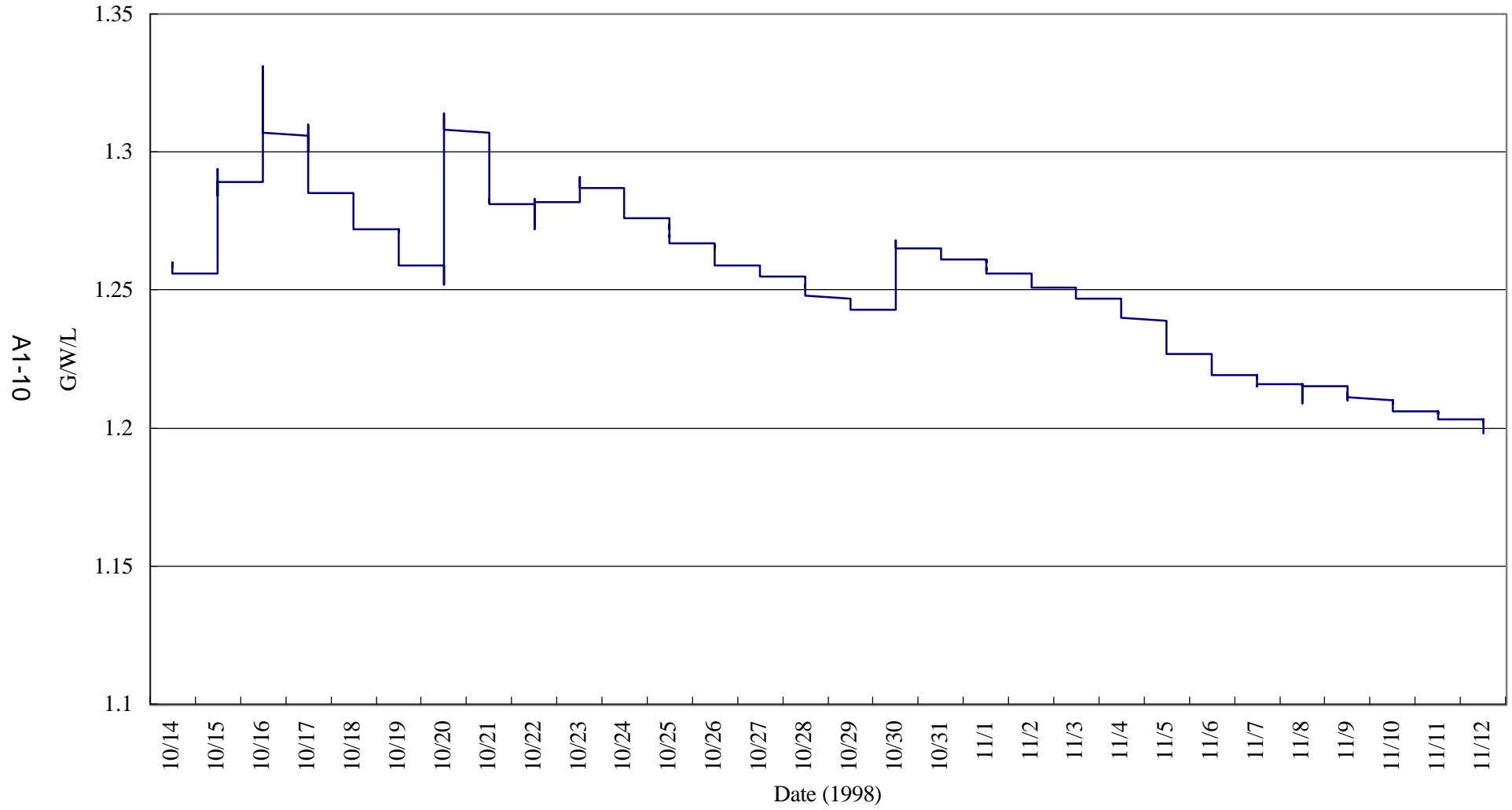
Monitoring Record of WT5

6-TV

G/W/L

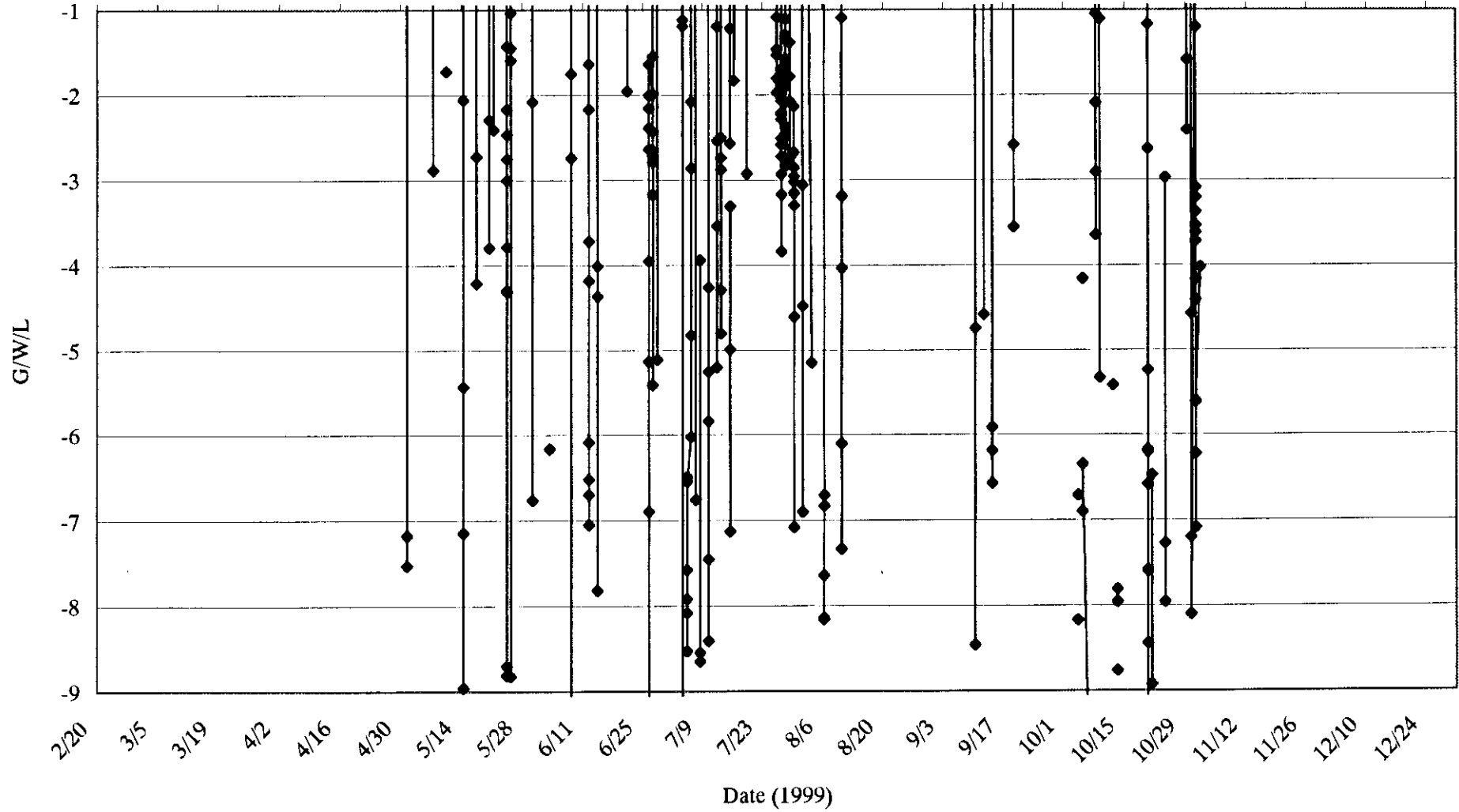


# Monitoring Record of WT6

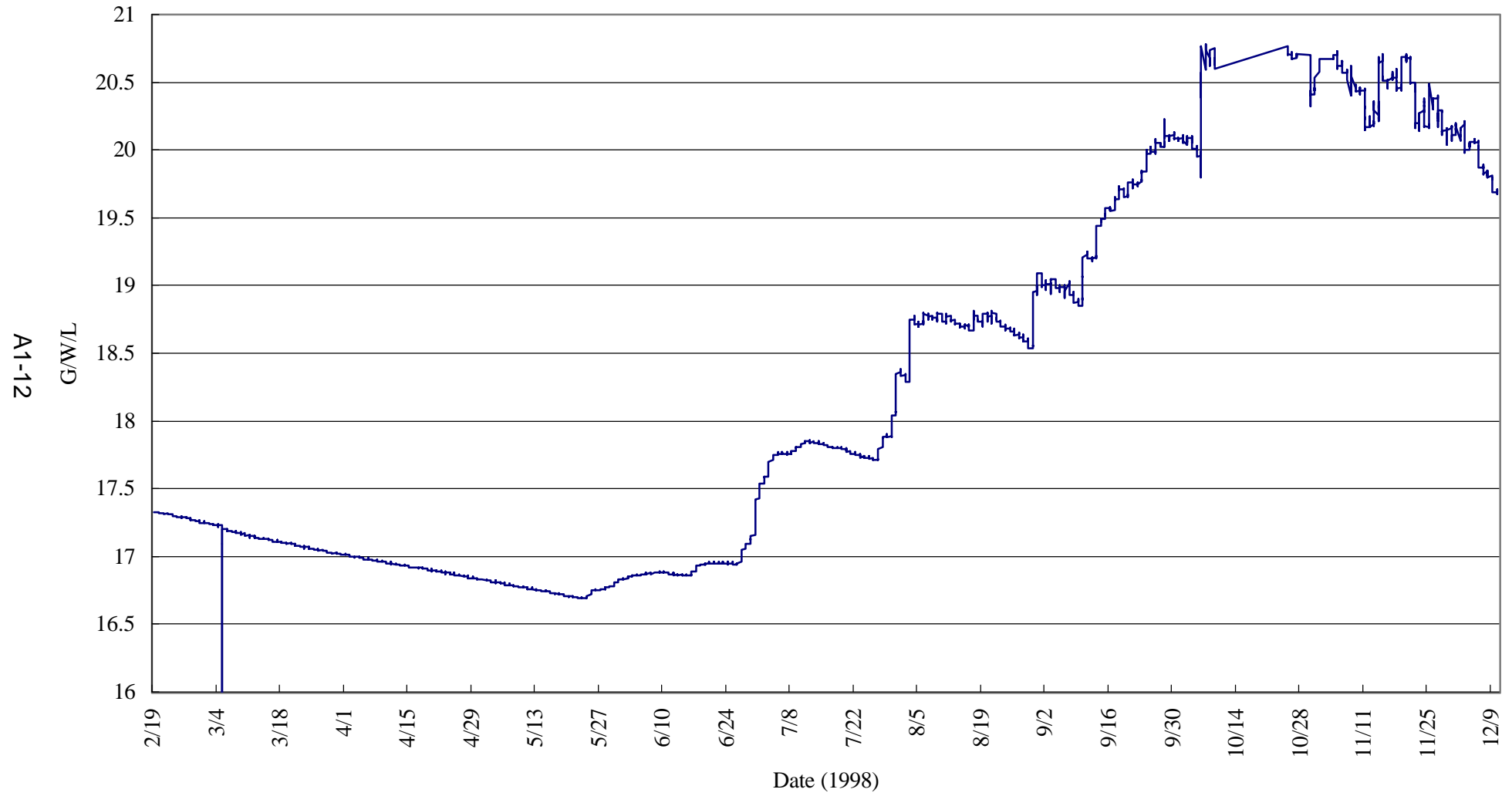


Monitoring Record of WT6

A1-11

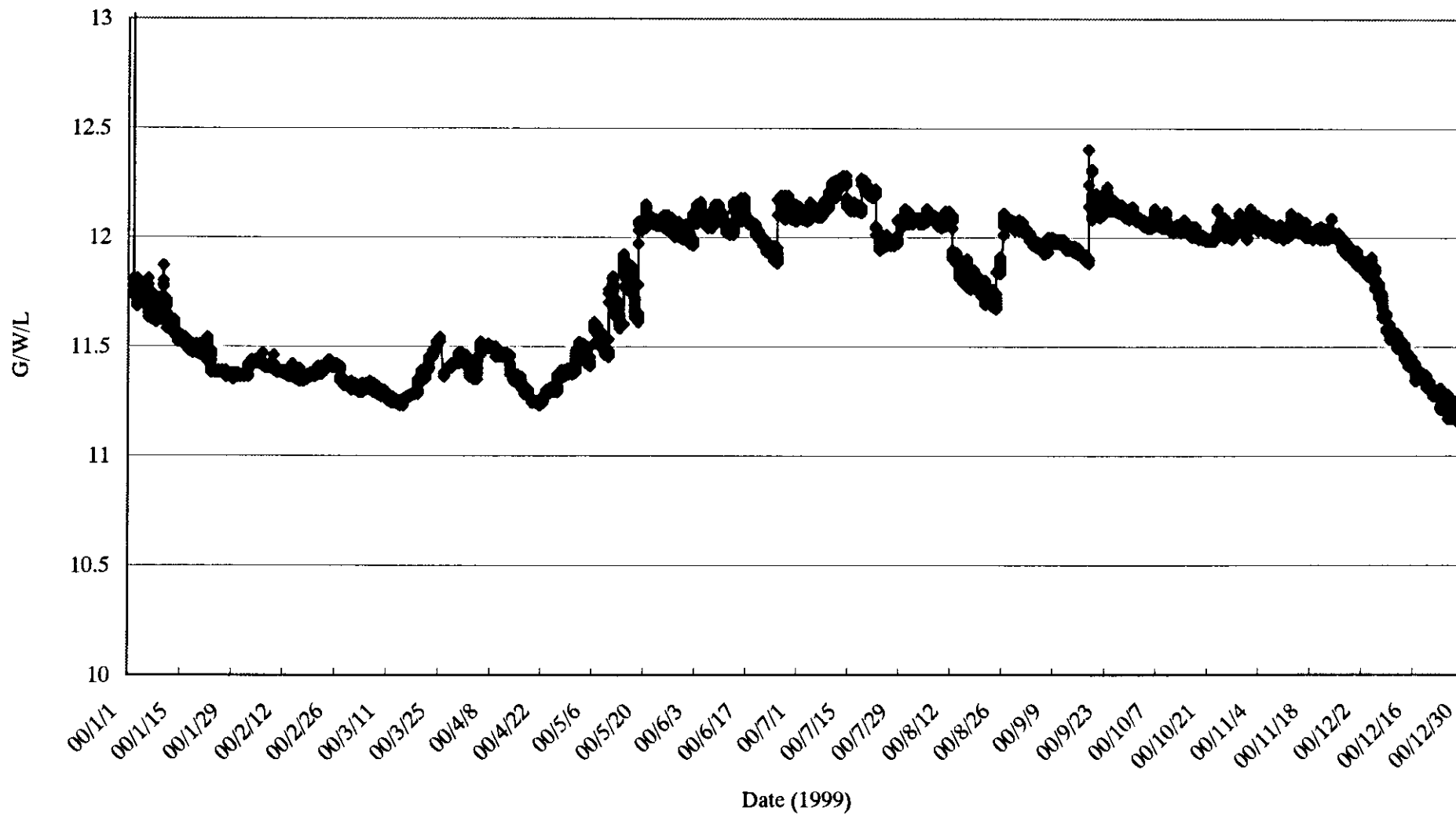


# Monitoring Record of WT7



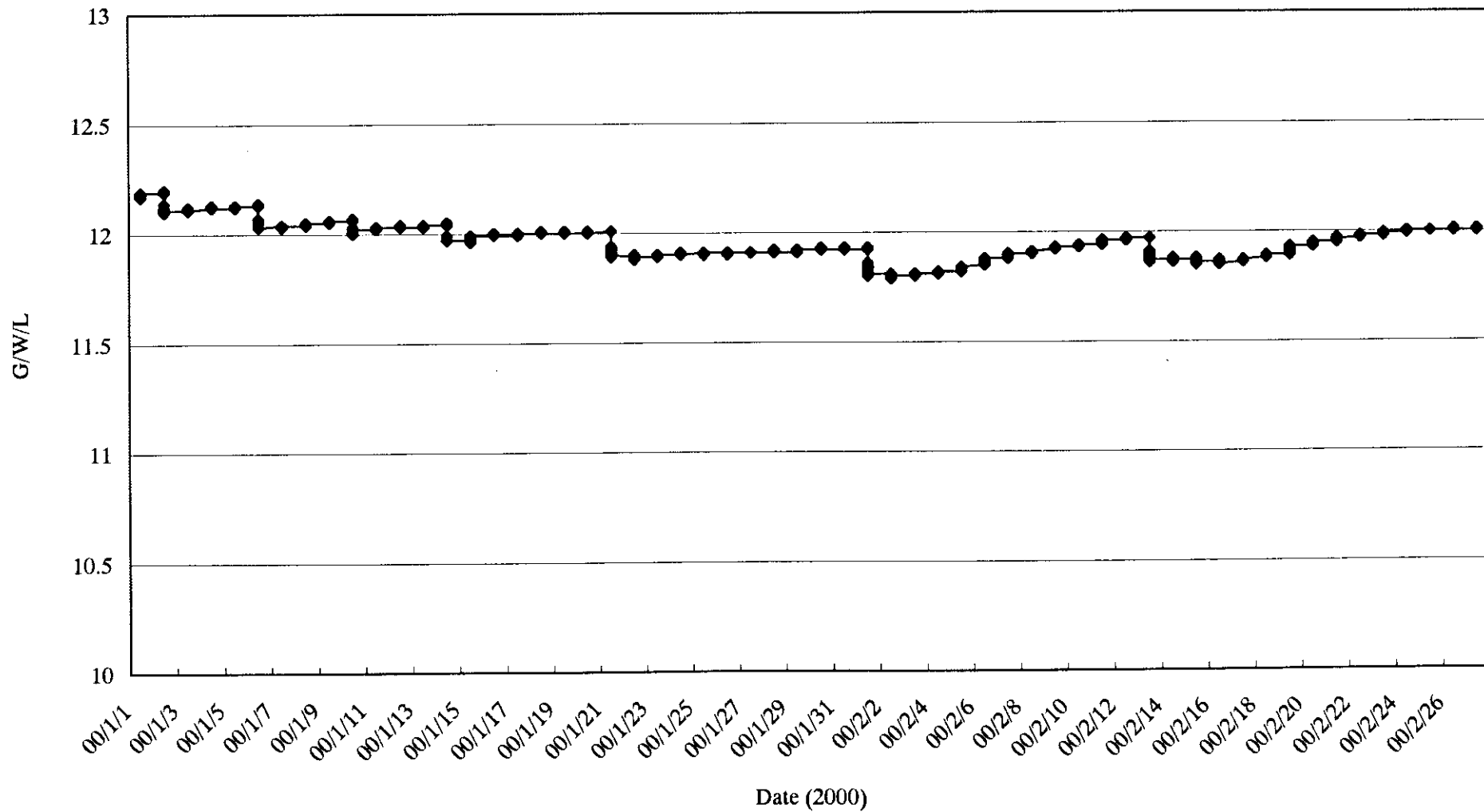
Monitoring Record of WT7

A1-13

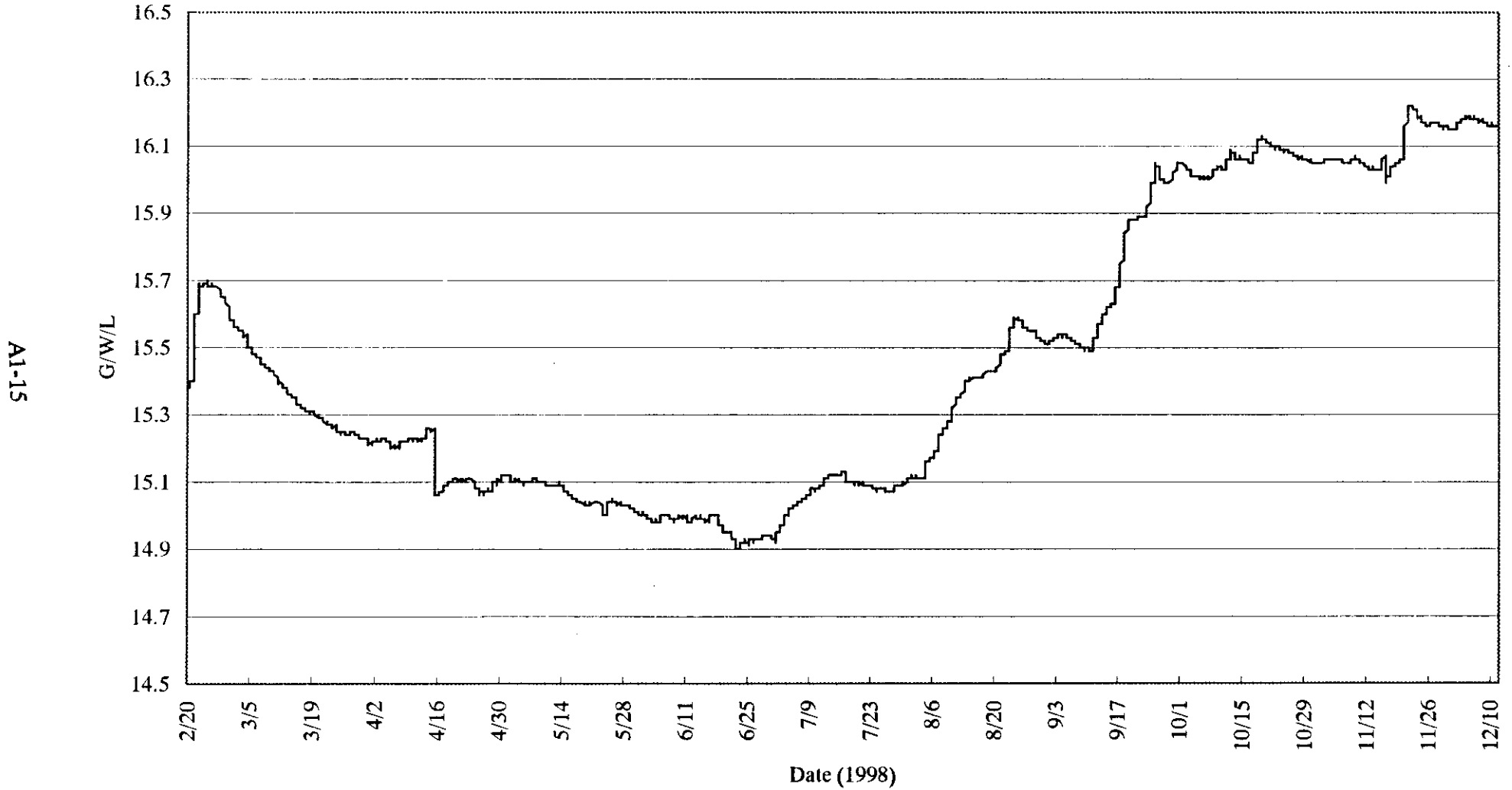


# Monitoring Record of WT7

AI-14



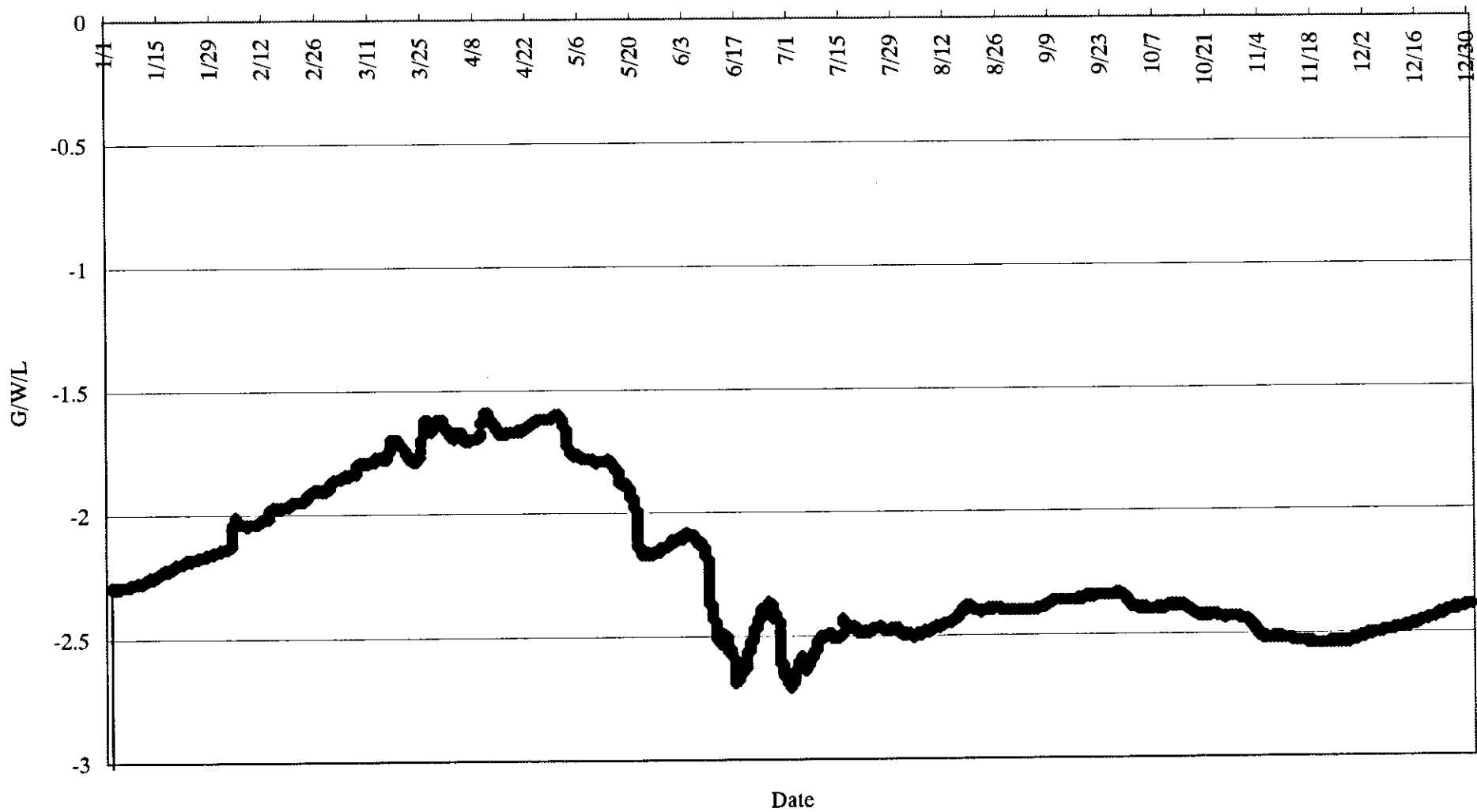
Monitoring Record of WT8





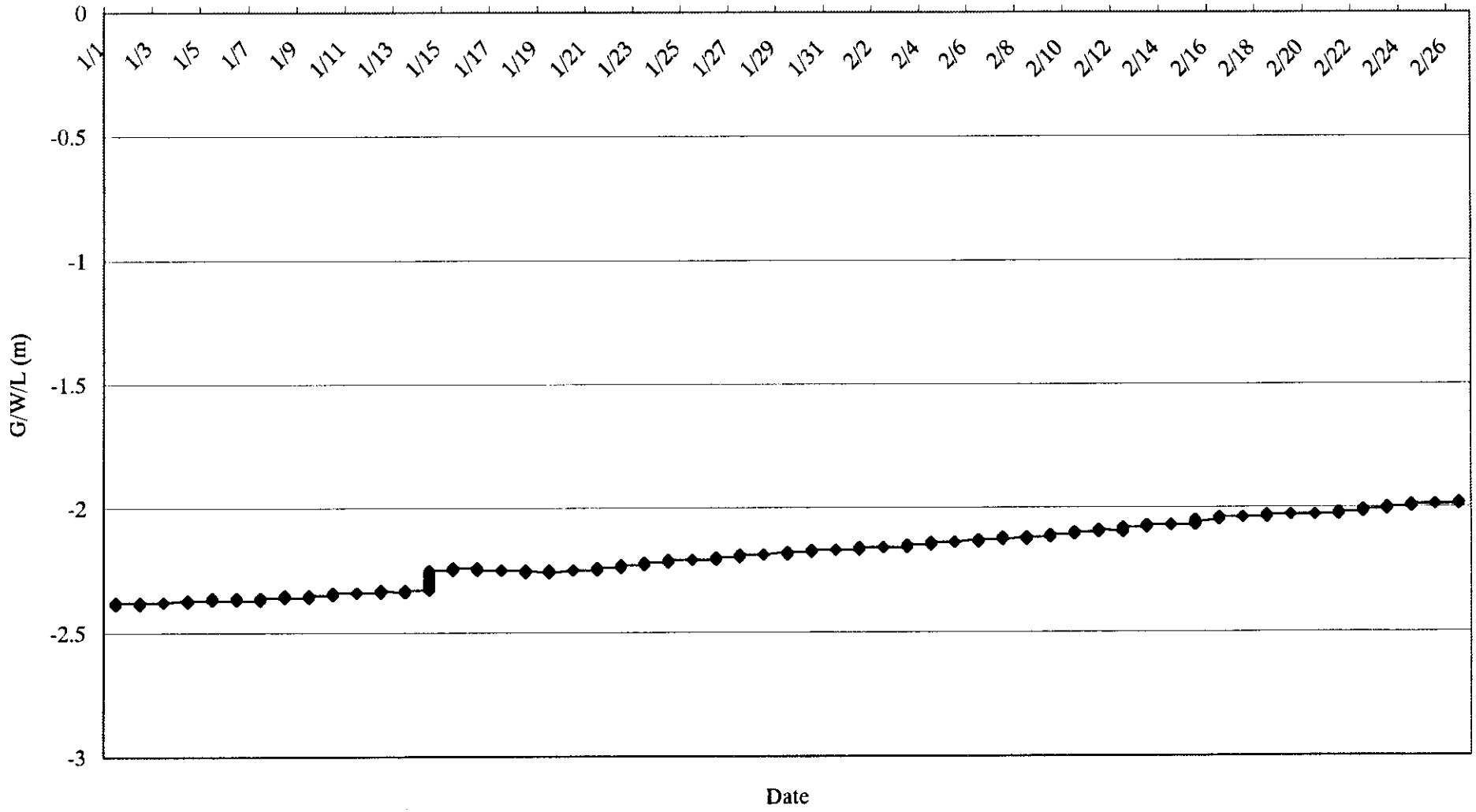
WT8 (1999)

9L-1V

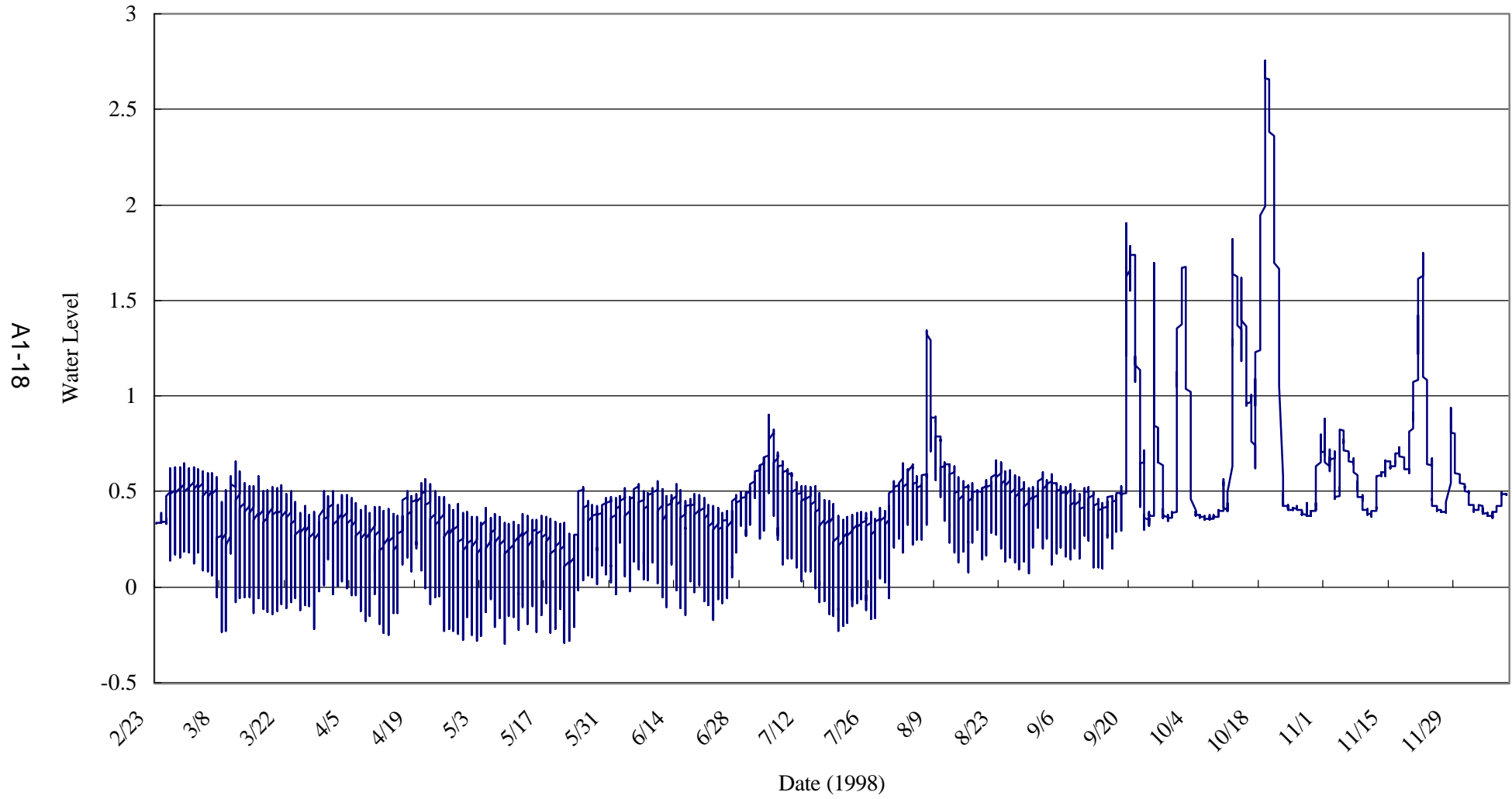


WT8 (2000)

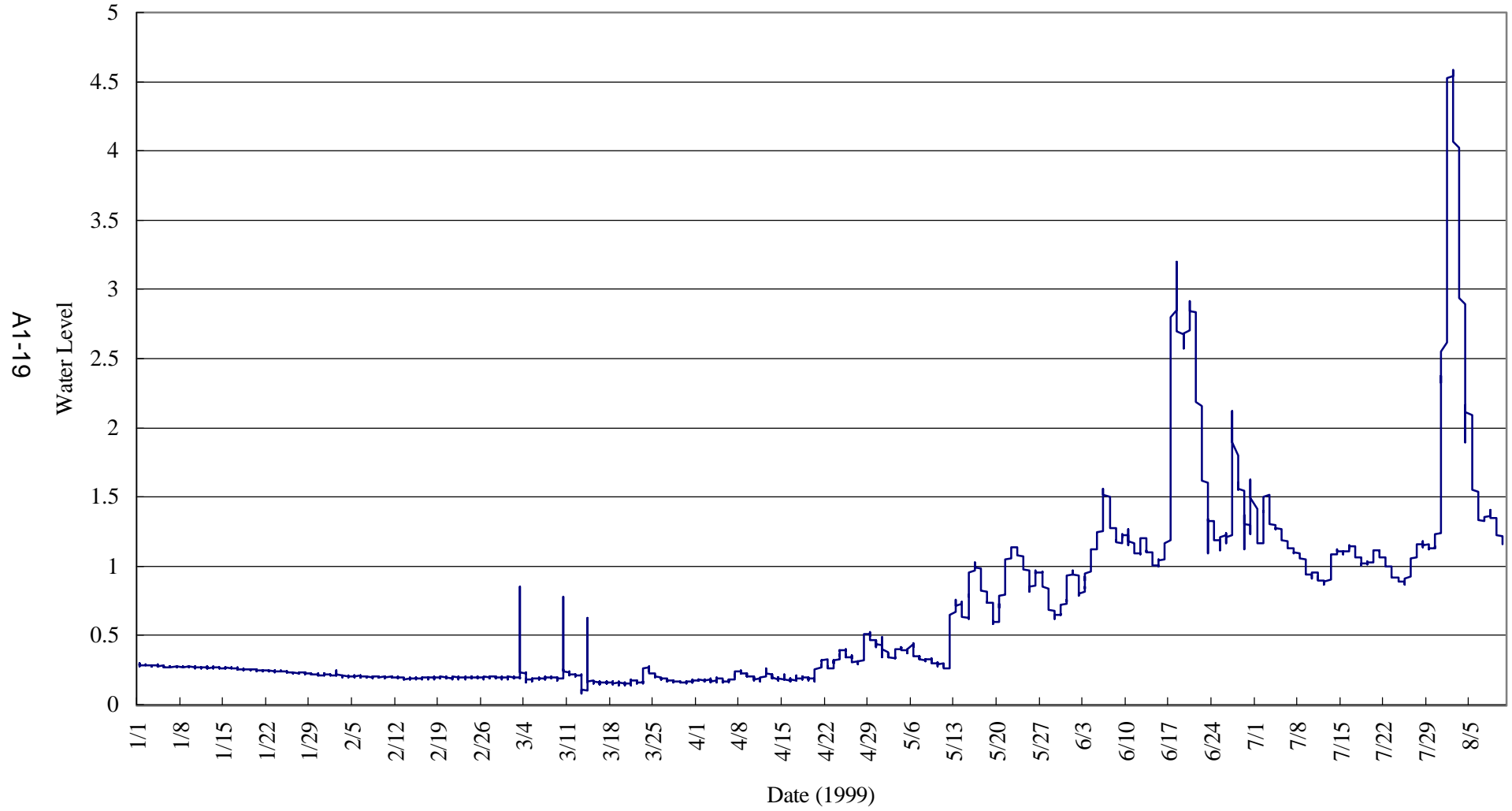
A1-17



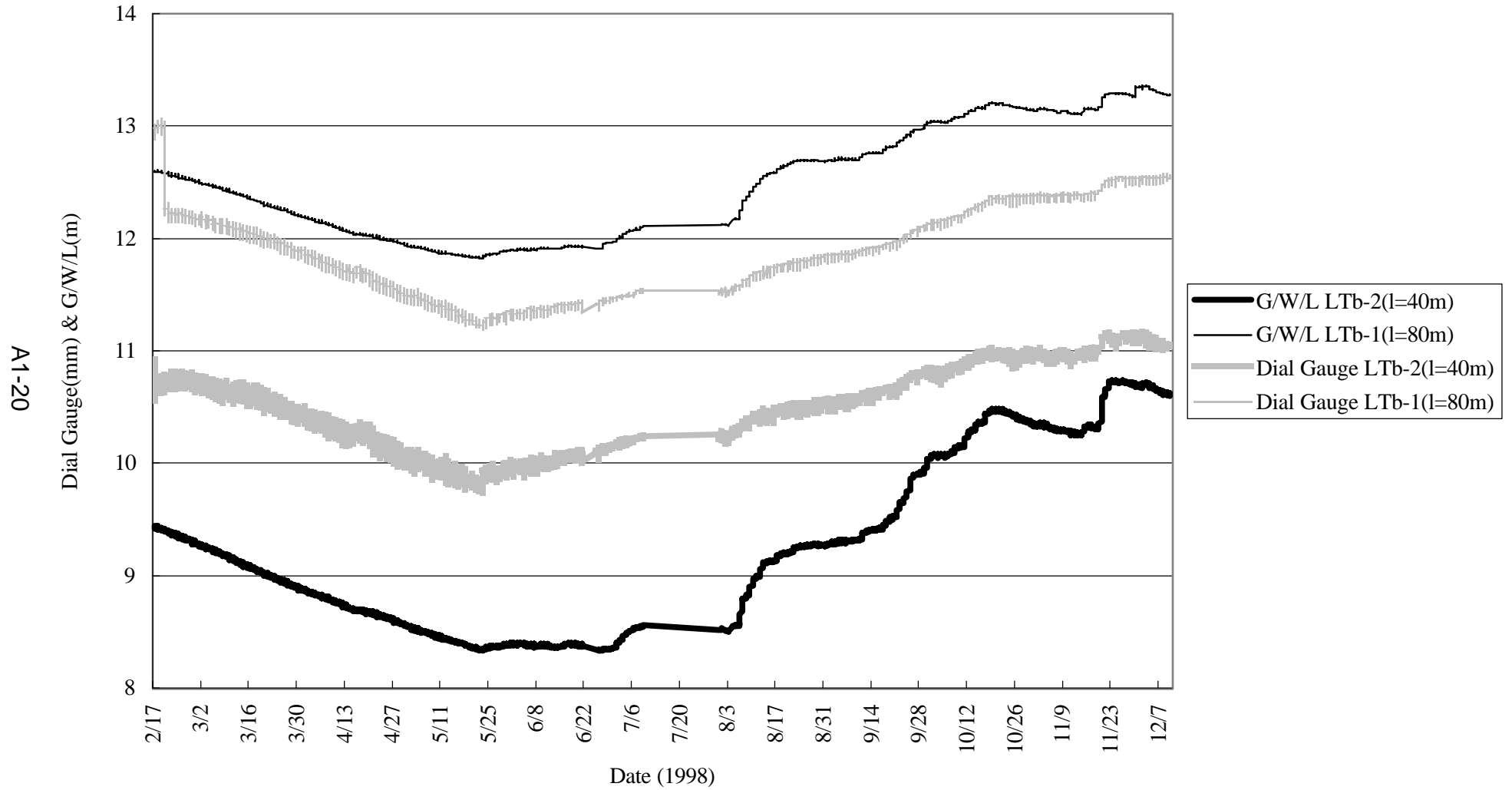
Prasat keo Station (Siem Reap River)



Prasat Keo Station (Siem Reap River)

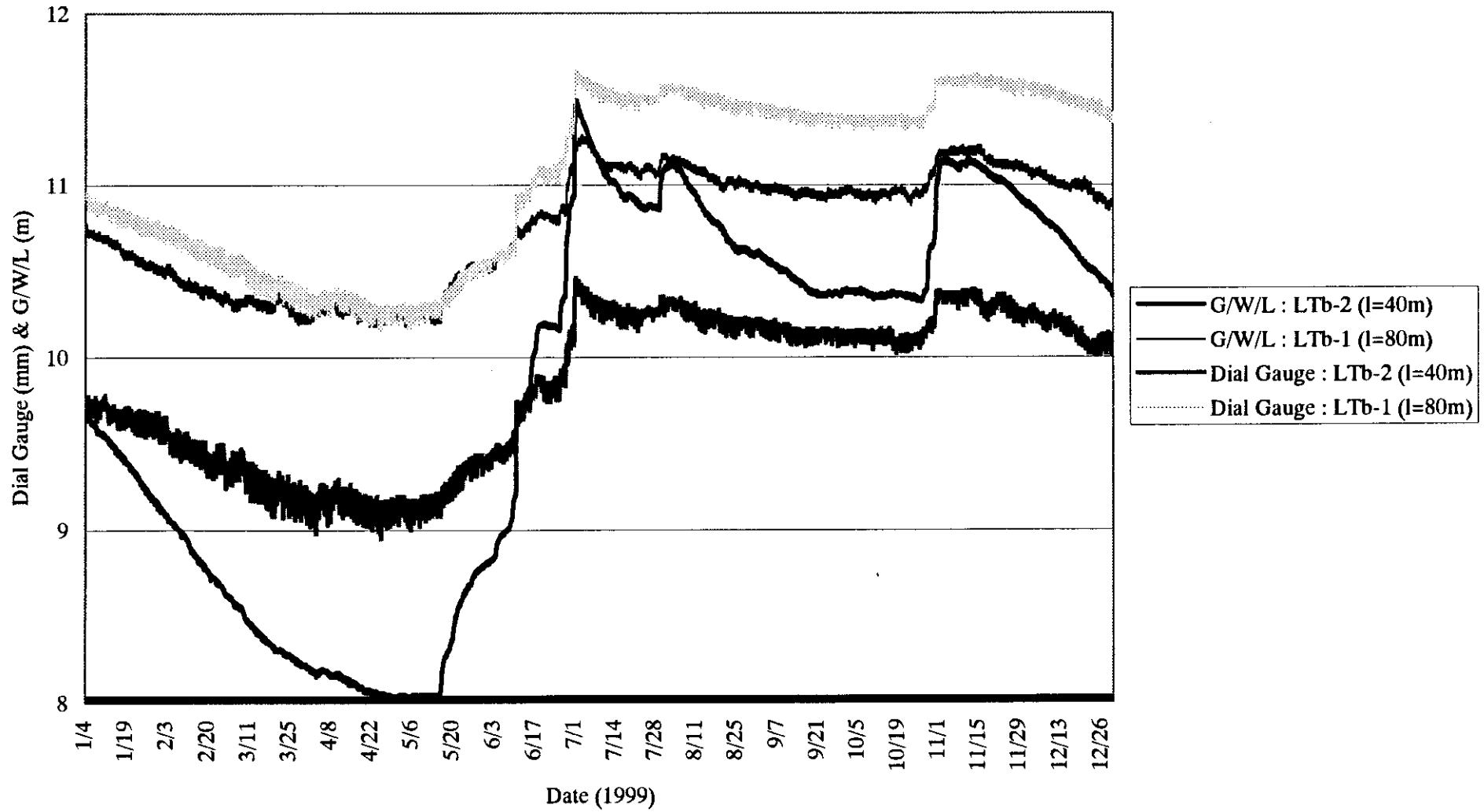


In Front of Angkor Wat



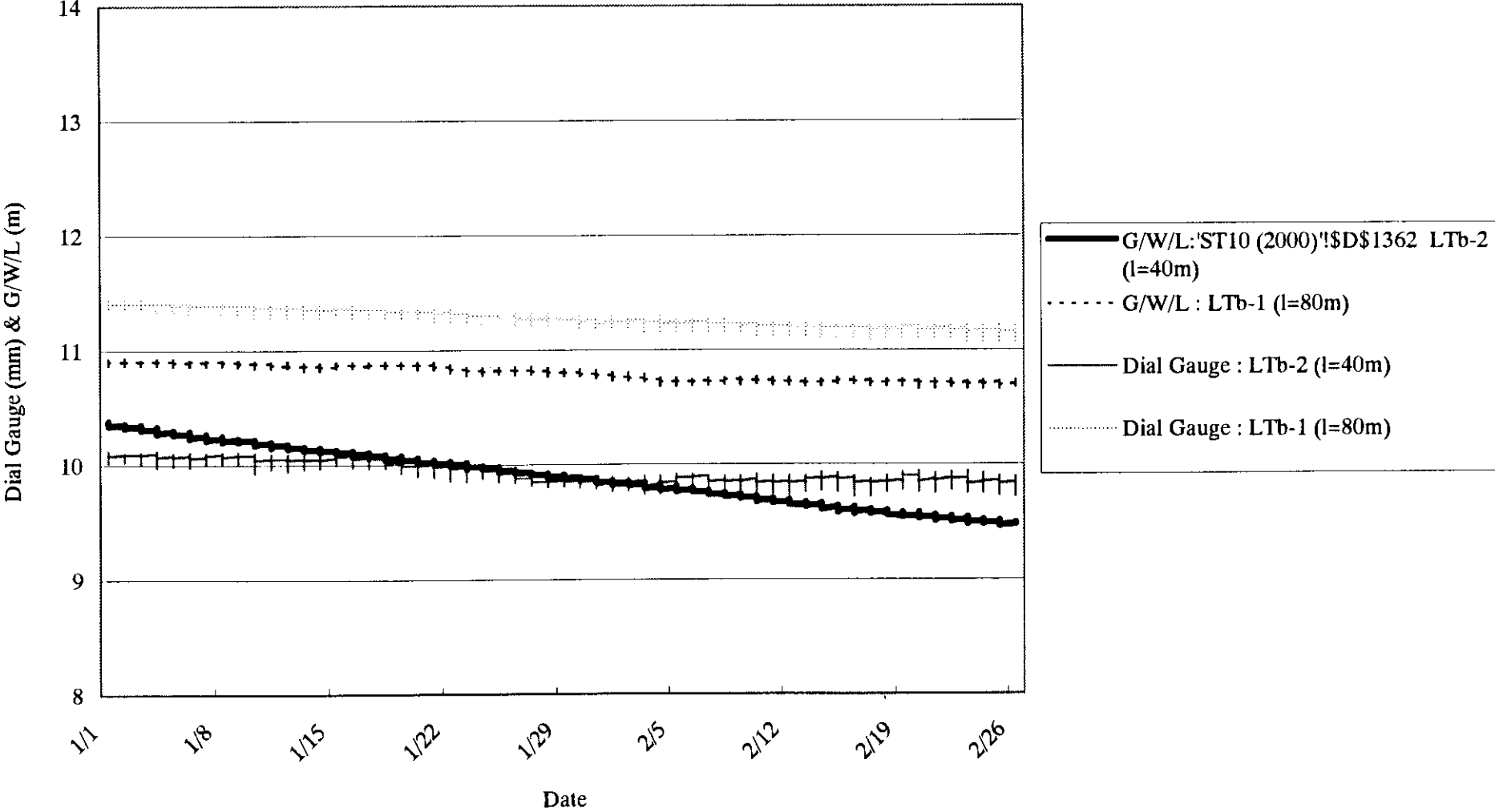
AI-21

In Front of Angkor Wat (1999)



In Front of Angkor Wat (2000)

A1-22



## **ATTACHMENT-2**

### **LIST OF COLLECTED DATA**



## LIST OF COLLECTED DATA

### A: List of Previously Collected Data

1. Hydrogeologic Reconnaissance of the Mekong Delta in South Vietnam and Cambodia(Geological Survey Water Supply Paper 1608-R, 1978; United States Government Printing Office, Washington)
2. Ground-Water Resources of Cambodia(Geological Survey Water Supply Paper 1608-R, 1977; United States Government Printing Office, Washington)
3. Rapport Intermediaire Chantier Eau Siem Reap(CODEV)
4. Travaux d'urgence de la Province de Siem Reap(CODEV)
5. Angkor et l'eau(UNESCO)
6. Inter Ministerial Working Group on Ground Water Data Collection(M/M, 1996.6; Ministry of Agriculture, Forestry and Fisheries)
7. Inter Ministerial Working Group on Ground Water Data Collection(Report on Provincial Visits, 1996.6; Ministry of Agriculture, Forestry and Fisheries)
8. Groundwater Database(MOAF)
9. Groundwater Database(UNICEF)
10. First State of the Environmental Report(1994; Cambodia)
11. Irrigation Rehabilitation Study in Cambodia, Final Report Annex-A-Hydrology(1994.6; Mekong Secretariat)
12. Mekong Development Research Network, Phase II, (1995.4) and An Environmental Study of the Mekong Basin in the Kingdom of Cambodia Draft MID-Project Report(The International Development Research Center)
13. Mekong Development Research Network, Phase II, (1995.7) and An Environmental Study of the Mekong Basin in the Kingdom of Cambodia (The International Development Research Center)
14. Report of the Study for Angkor Heritage(Japanese Safeguarding Angkor; written by Japanese)
15. Development Objective, Strategies and Programs of the Royal Government of Cambodia(Summarized from NPRD; Cambodia)
16. Report of Activities(1995; UNESCO)

17. The Application for Japan's Grant Aid for Siem Reap Water Supply Improvement Project(1995.9; Ministry of Industry, Mines and Energy)
18. Cambodia Agenda for Rehabilitation and Reconstruction(1992, June The World Bank, East Asia and Pacific Region Country Department)
19. Implementation Situation of the Socio-Economic Rehabilitation and Development, and Development Program(Ministry of Planning)
20. Comprehensive Paper on Cambodia(UNDP 1992, April)
21. Cambodia, Socio-Economic Situation and Immediate Needs(ADB, IMF, UNDP World Bank, 1992, May)
22. Report of the Cambodia Rural Integration Strategy Mission Vol.-1(UNDP, 1992)
23. Report of the Cambodia Rural Integration Strategy Mission Vol.-2, ANNEXES(UNDP, 1992)
24. Report of the Cambodia Infrastructure Survey Mission (UNDP, 1990)
25. Women in Cambodia: Overview of the Situation and Suggestions for Development Program(Red Barna, 1990, July)
26. Kingdom of Cambodia National Region Sovereign(State Secretariat for Rural Development(1993, Dec.)
27. Humanitarian Assistance in Cambodia(Cooperation Committee for Cambodia 1993)
28. Statistics Book 1980-1991(Ministry of Planning, Statistics Department)
29. Economic Report on Cambodia(ADB 1991, Dec.)
30. Report of the Economic and Demographic Statistical Assessment Mission to Cambodia(UNDP 1991, Mar)
31. Report of the Economic and Demographic Statistical Assessment Mission to Cambodia, Special Statistical Annexes(UNDP 1991, Mar)
32. Bulletin of Agricultural Statistics and Studies 1993(Ministry of Agriculture, Forestry and Fisheries)
33. Cambodia from Rehabilitation to Reconstruction an Economic Report 1994(World Bank)
34. National Statistics 1993(Ministry of Planning Department of Statistics)
35. Health in Cambodia Development of Goals and Plans(Ministry of Health, WHO)
36. Country Report, Cambodia Laos 2nd Quarter(The Economic

Intelligence Unit)

37. Environmental Status and Management(State Secretariat for Environment)
38. Siem Reap-Angkor Institutional Rules and Land Property Assets Synthesis and Recommendations First stage(APSARA)39.  
Hydrogeological Map of Lower Mekong Basin, 1992, 1:1.000,000
39. Geological Map, 1971, 1:1:2,000,000
40. Land Use Map of Cambodia(ministry of Environment)

**B: List of Newly Collected Data**

1. Memorandum of Understanding for the Water Supply Emergency Rehabilitation Project in 2 Provinces(Kampong Cham and Kratie)
2. First Socioeconomic Development Plan 1996-2000(1996, Feb.)
3. Plan d'Urbanisme de Reference et Projets Prioritaires(Vol. 1 1995 Nov.)
4. Water Management in the Angkor Area(Angkor Foundation Budapest Hungary 1993 June)
5. Aerial Photos taken at February 1997

## **ATTACHMENT-3**

**CONTOUR MAP OF GROUND WATER LEVEL BY MONTHLY  
SIMULTANEOUS OBSERVATION**

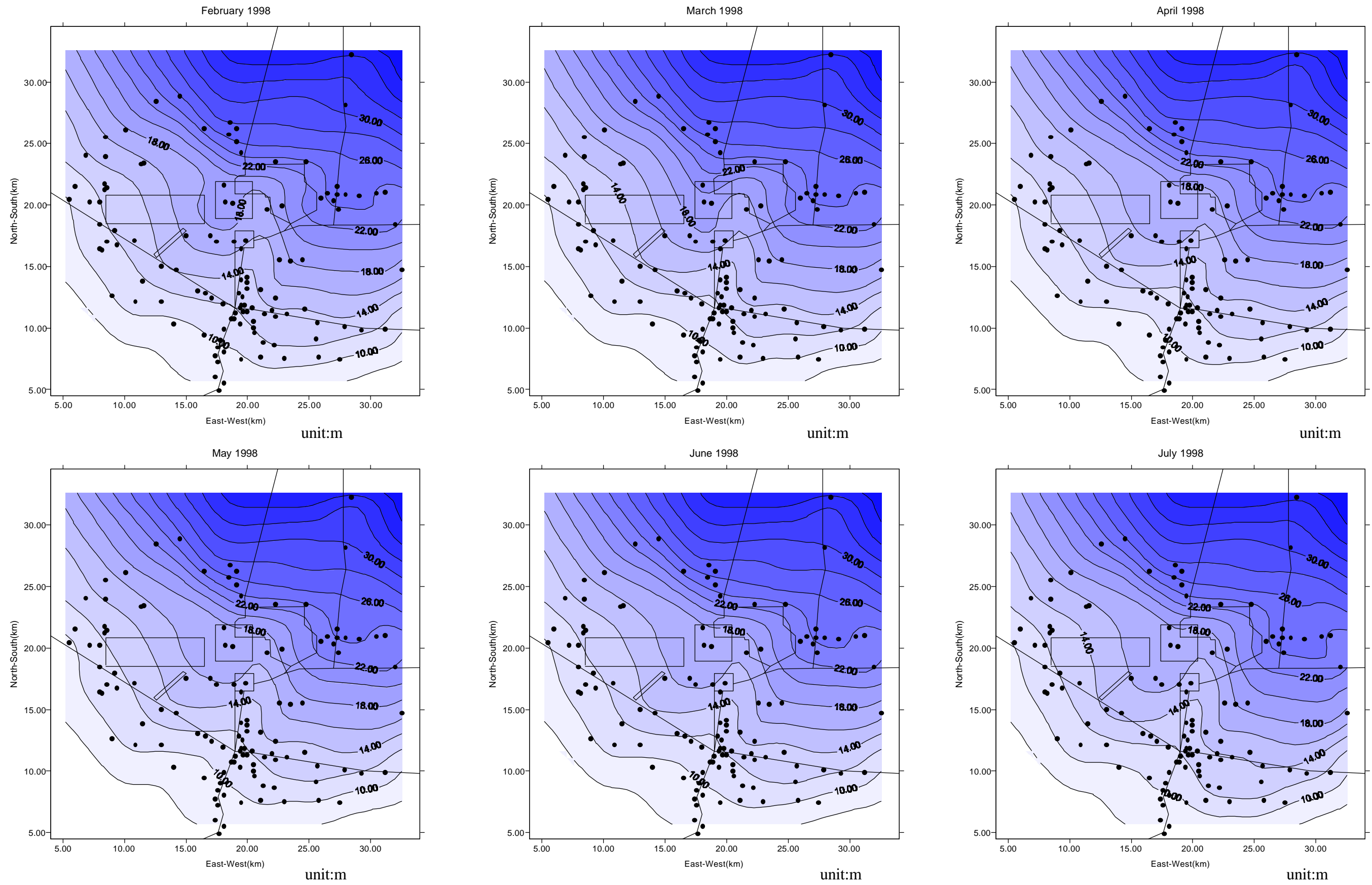


Figure 4.5(1/4) Contour map of Groundwater Level Fluctuation from February 1998 to July 1998

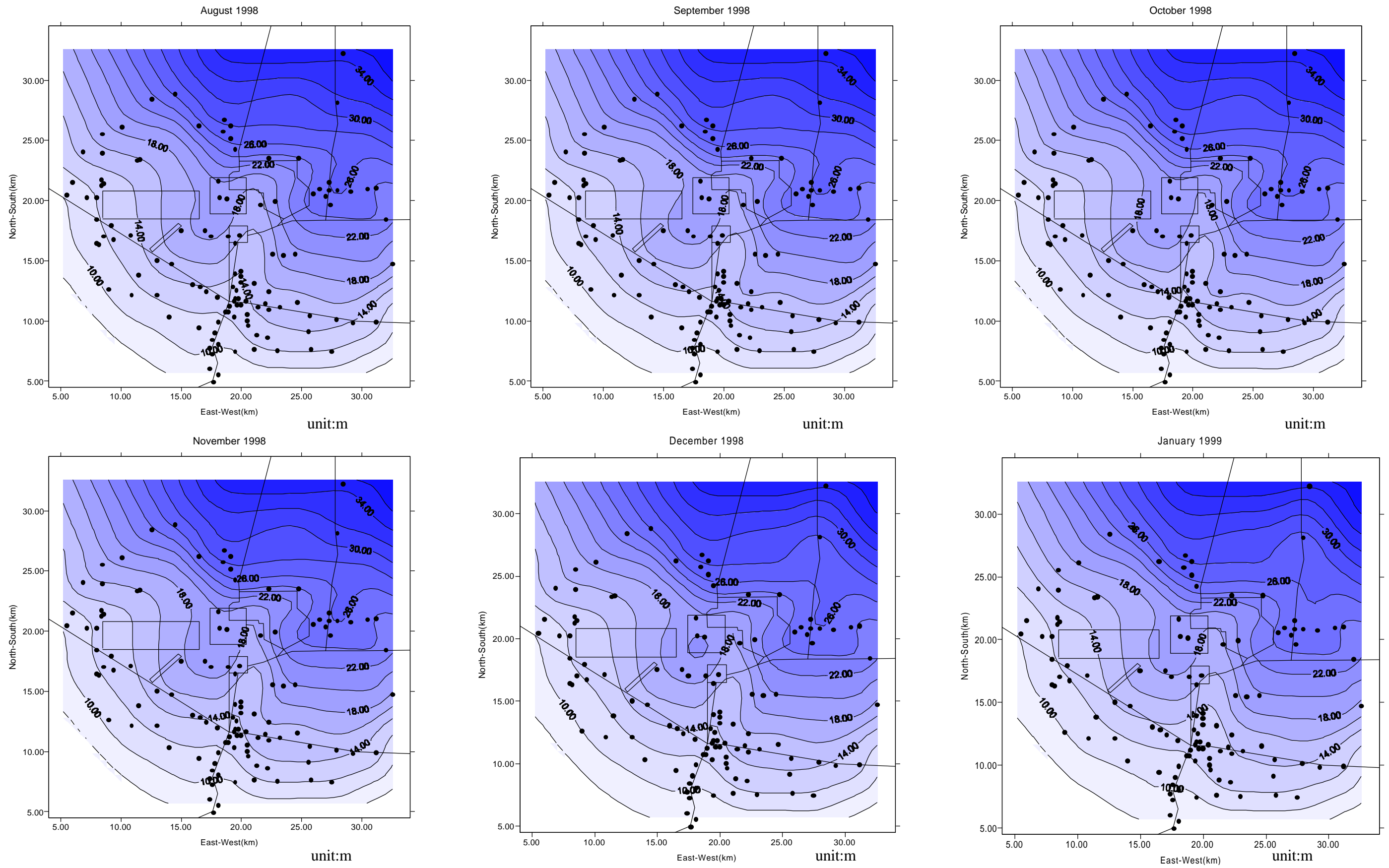


Figure 4.5(2/4) Contour map of Groundwater Level Fluctuation from August 1998 to January 1999

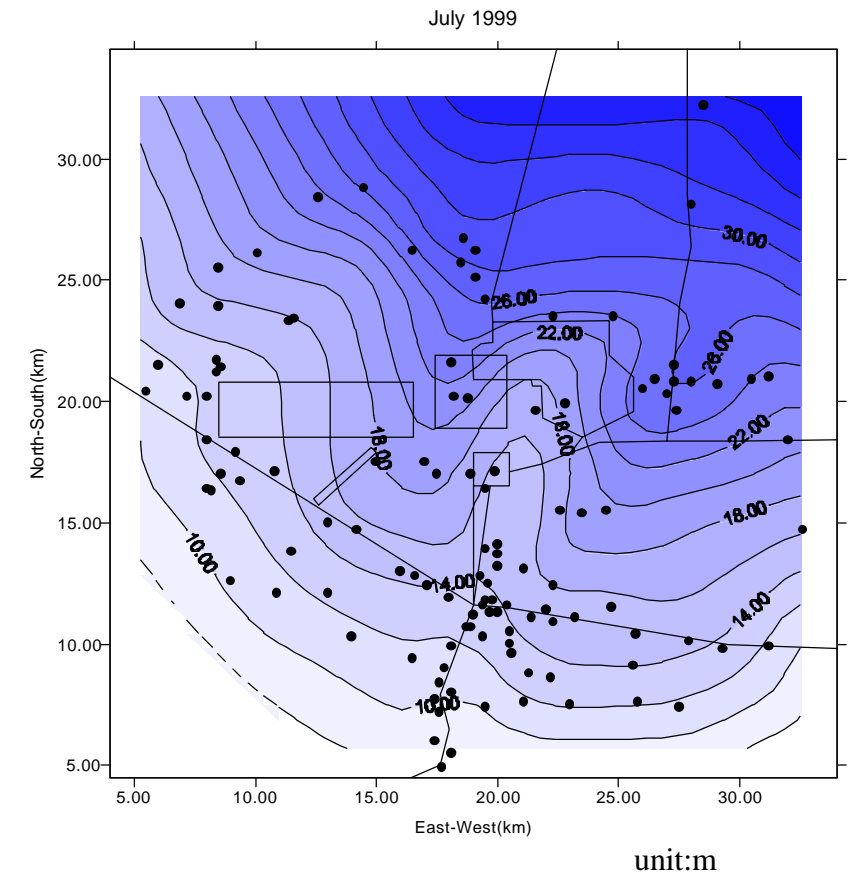
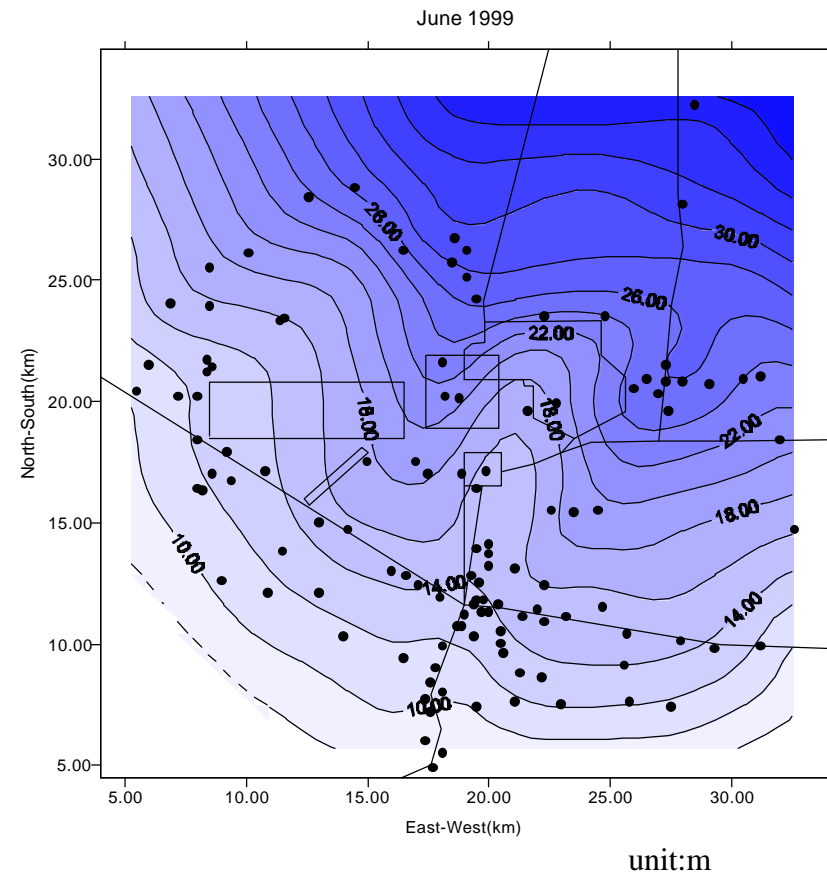
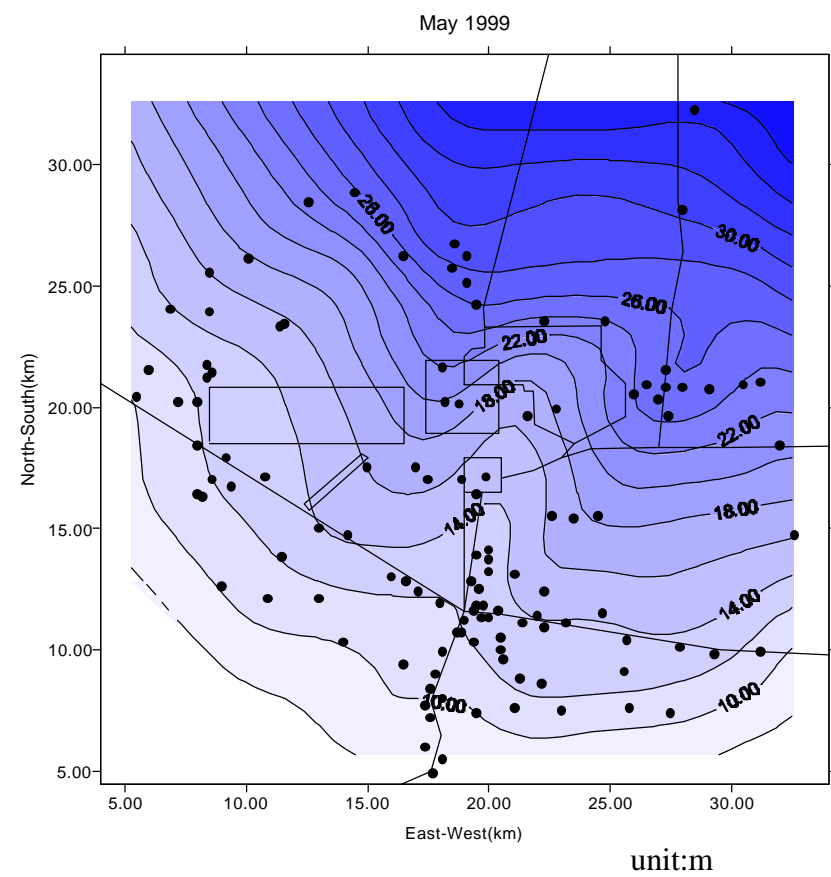
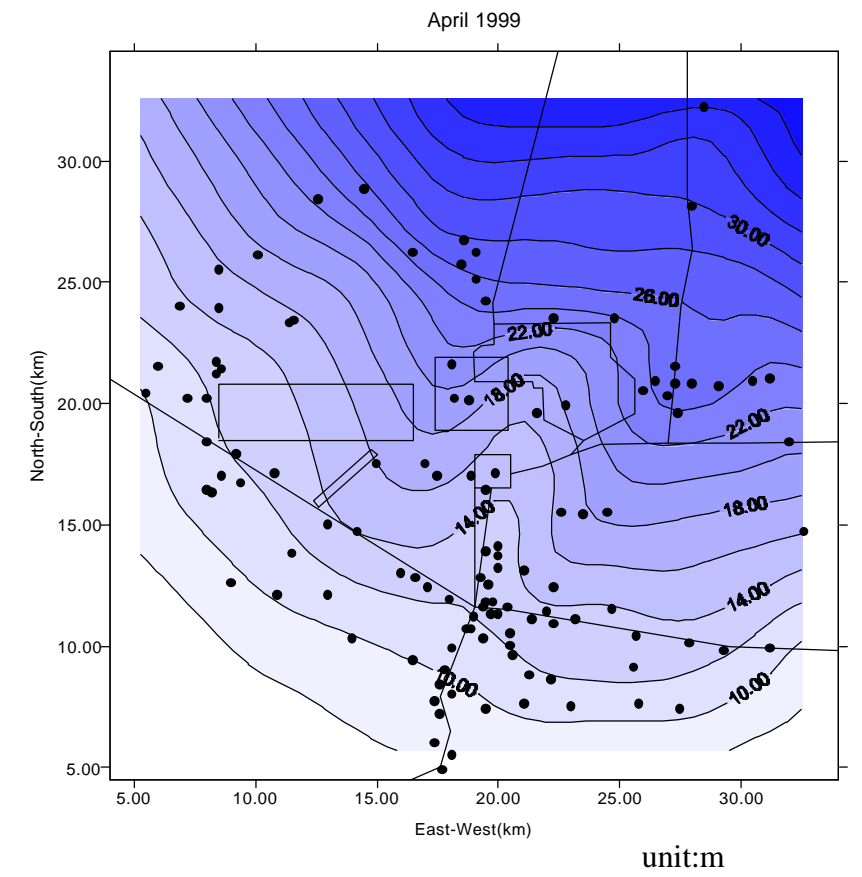
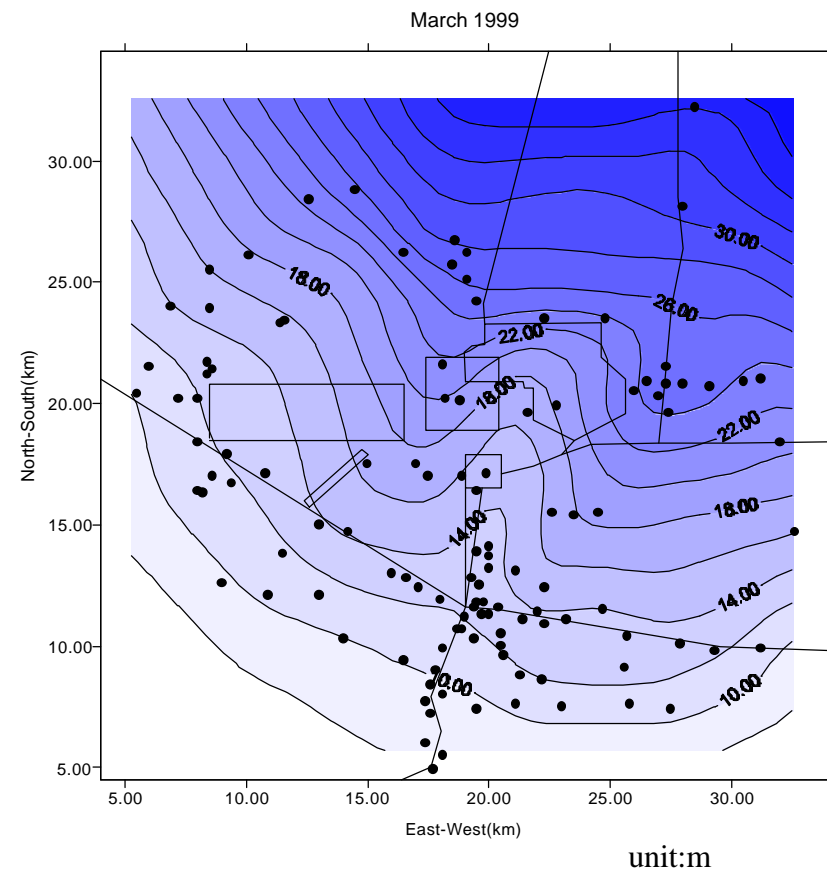
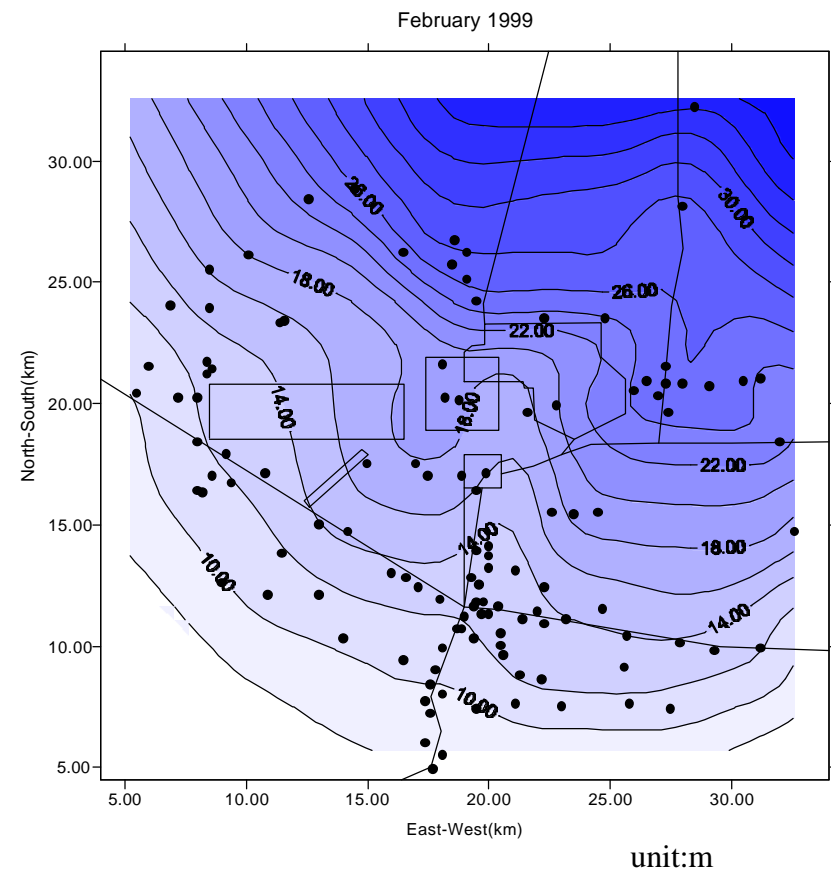


Figure 4.5(3/4) Contour map of Groundwater Level Fluctuation from February

üñž

IBP



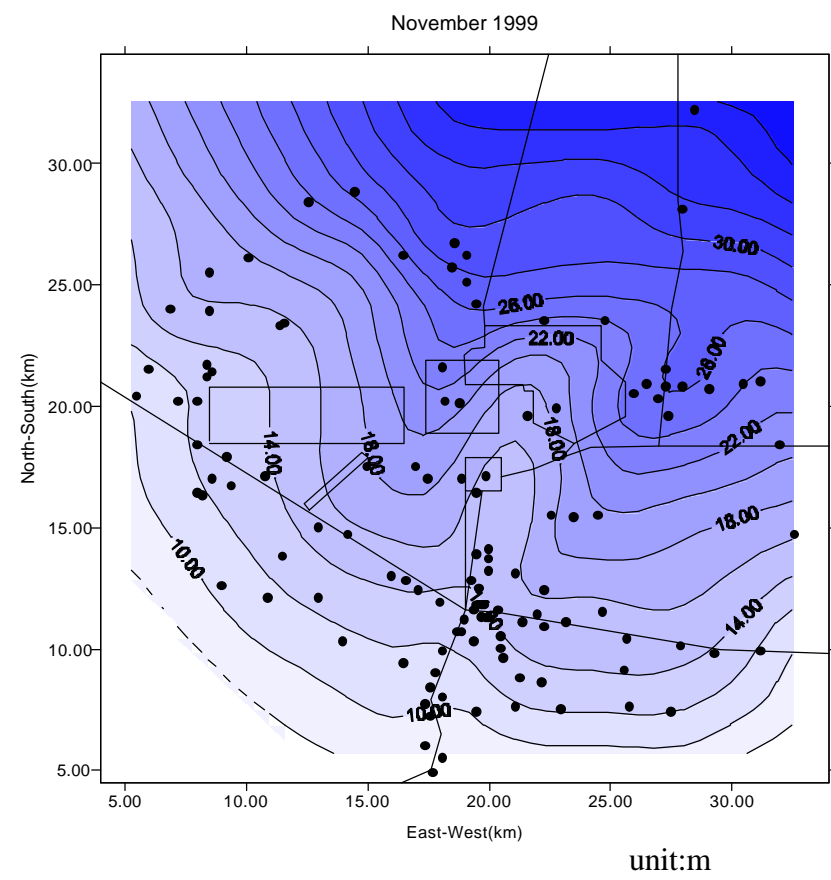
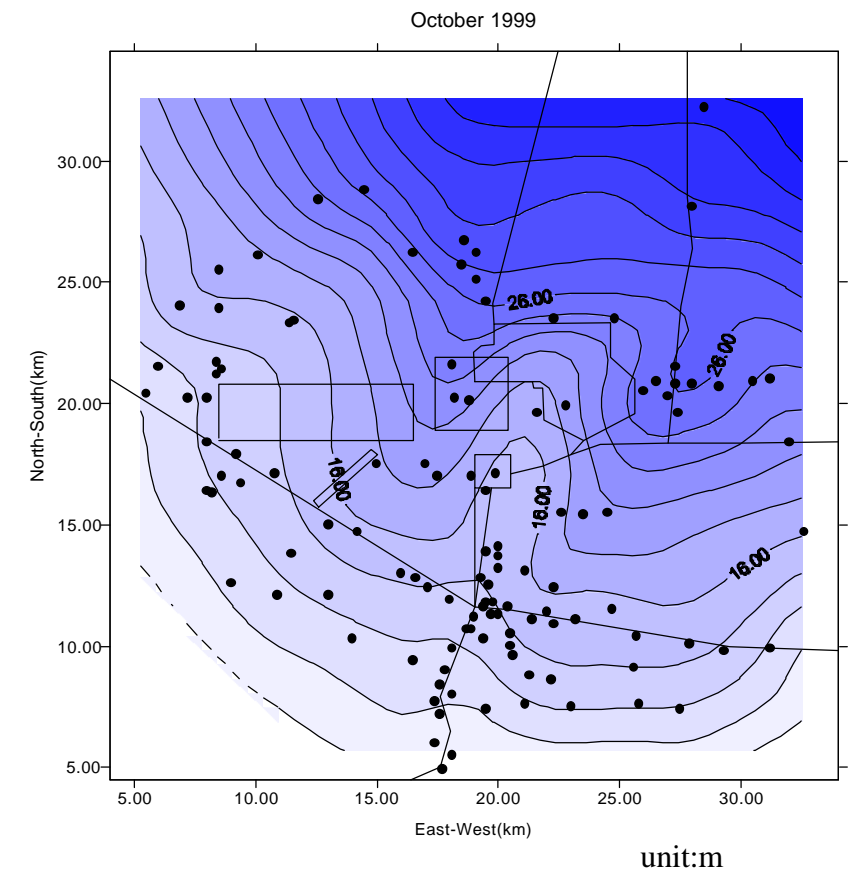
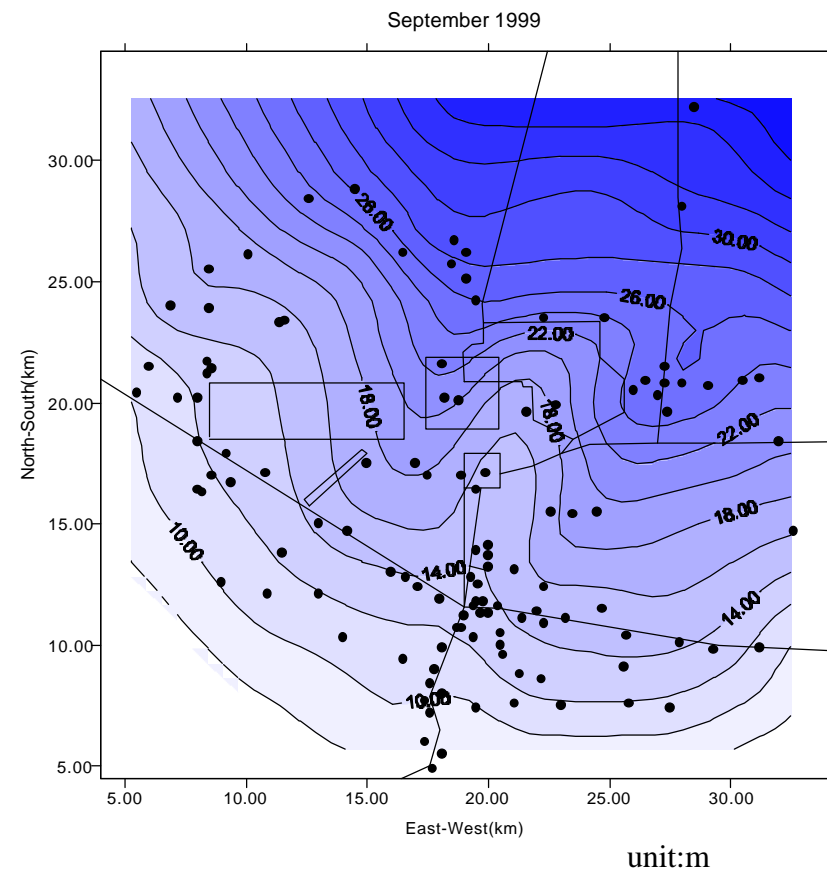
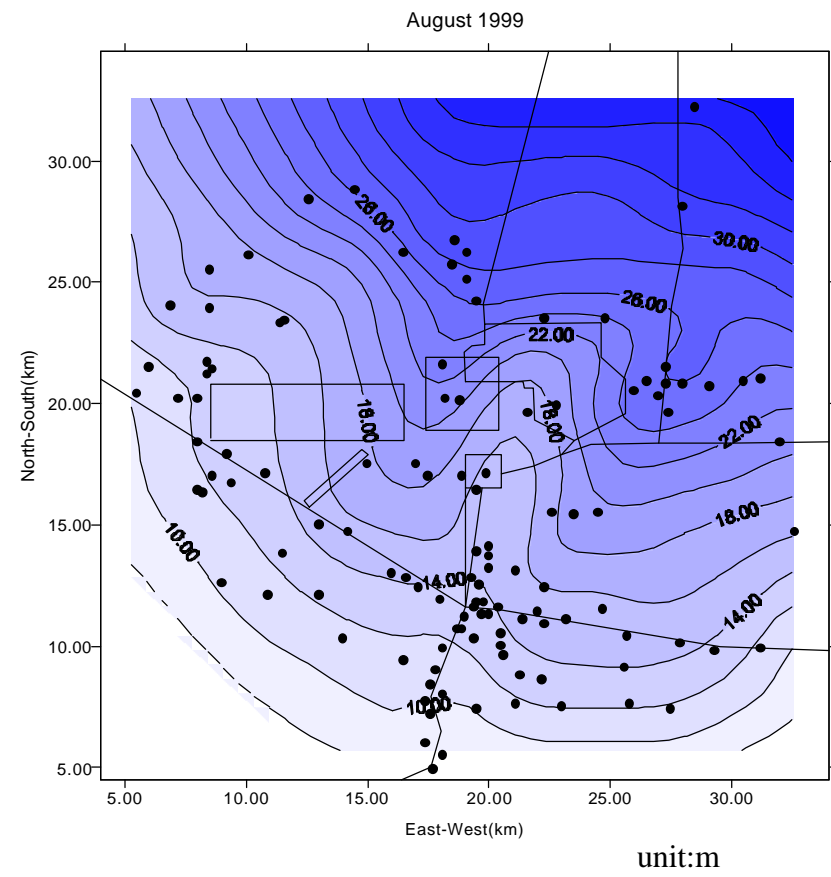


Figure 4.5(4/4) Contour map of Groundwater Level Fluctuation from August1999 to November 1999