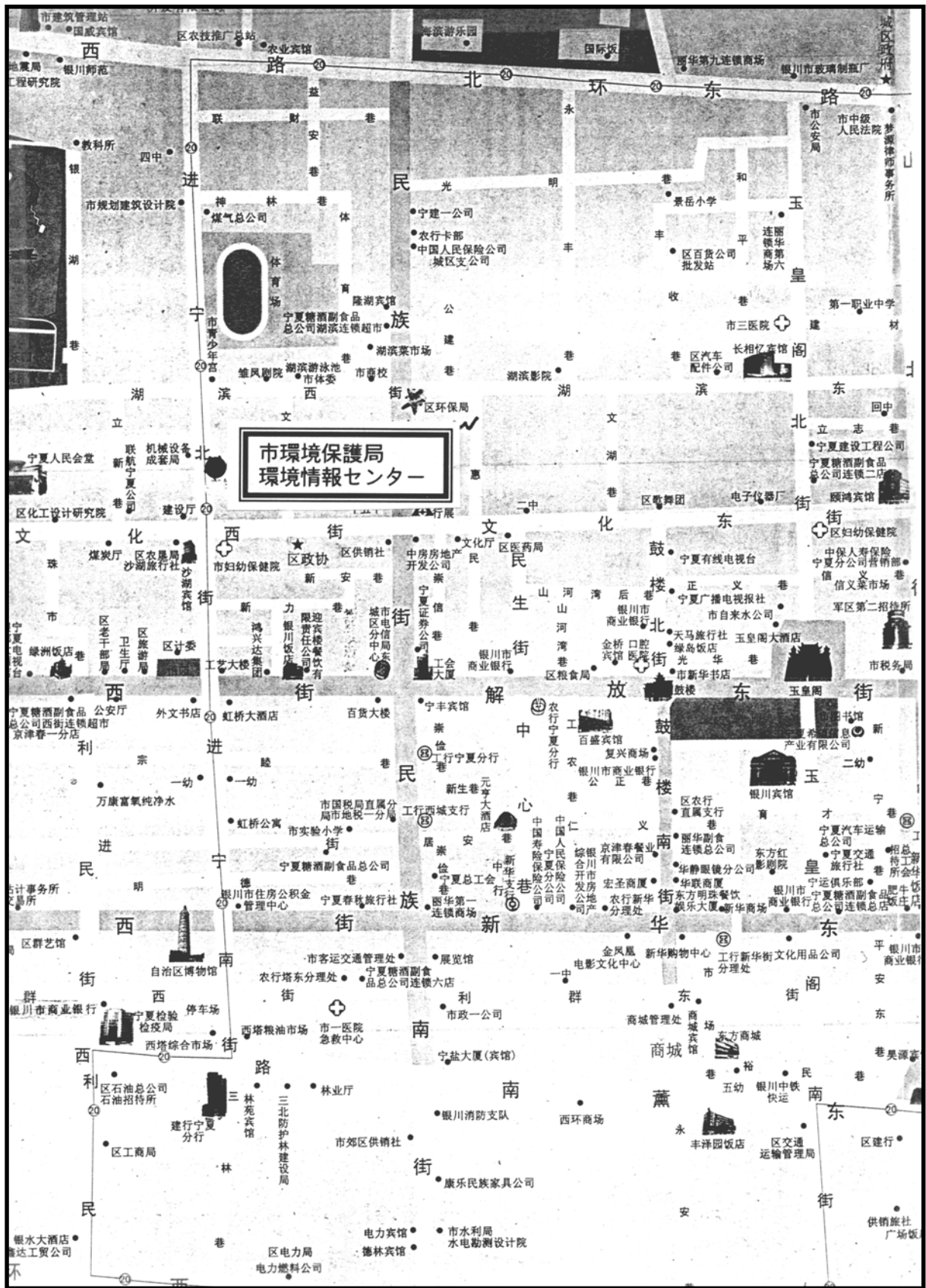


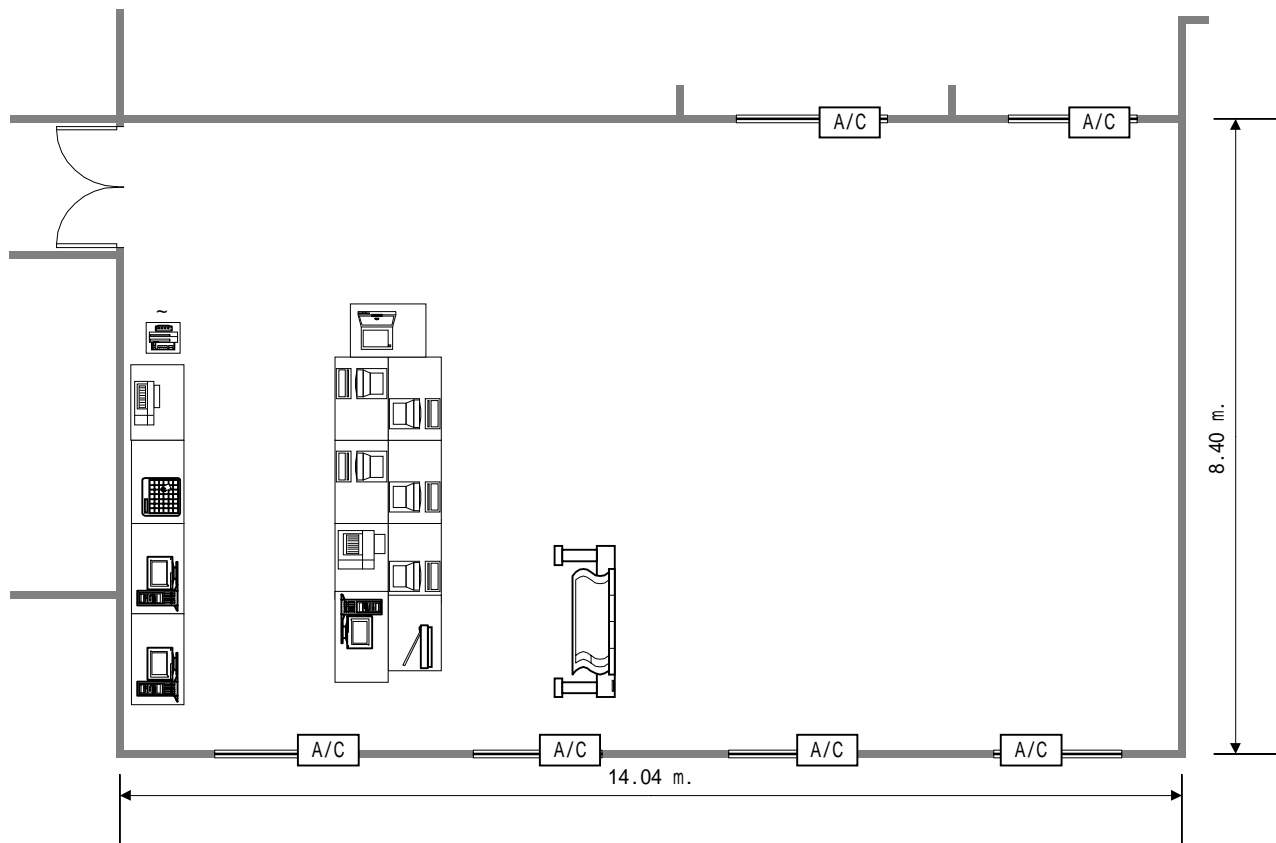
# 39. 銀川市 (都市 No. 97)



サイト位置図

**資料6 環境情報センターコンピュータ室  
フロアレイアウト図**

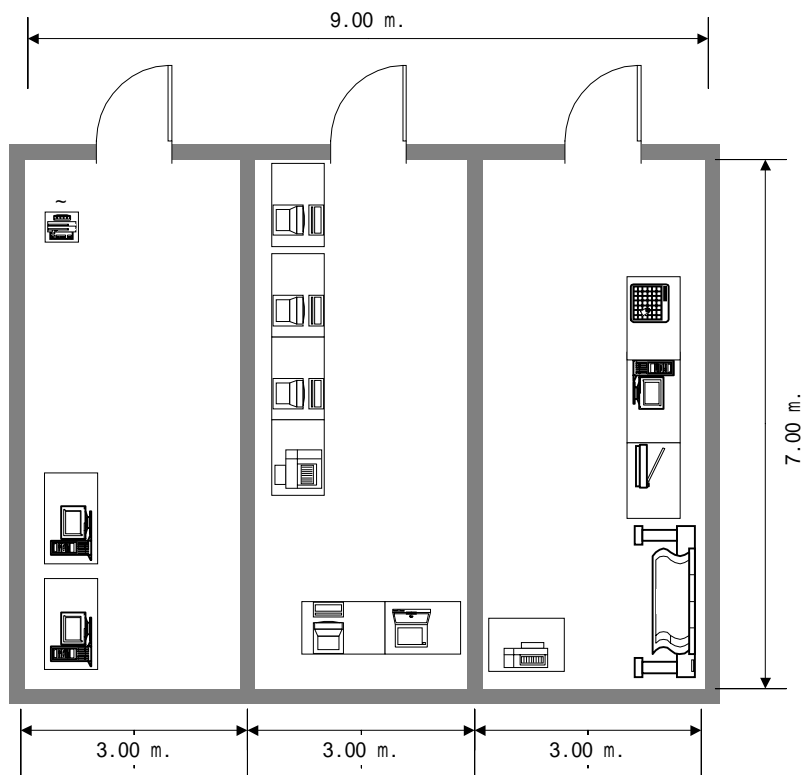
1. 重慶市（都市No. 1）



	Equipment	Unit	W (mm)	D (mm)	H (mm)		Equipment	Unit	W (mm)	D (mm)	H (mm)
①	Main Server	1	1200	700		⑧	Scanner	1	1000	700	
②	Member Server	1	1200	700		⑨	Plotter	1	2000	800	1300
③	GIS Server	1	1200	700		⑩	Digitizer	1	1100	700	
④	Desktop PC	5	1100	700		⑪	Switch	1	445	400	60
⑤	Note PC	1	1000	700		⑫	Hub	1			
⑥	Printer (L. B.)	1	1000	700		⑬	Router	1			
⑦	Printer (I. J.)	1	1100	700		⑭	Modem	1			

コンピュータ室フロアレイアウト (1/100)

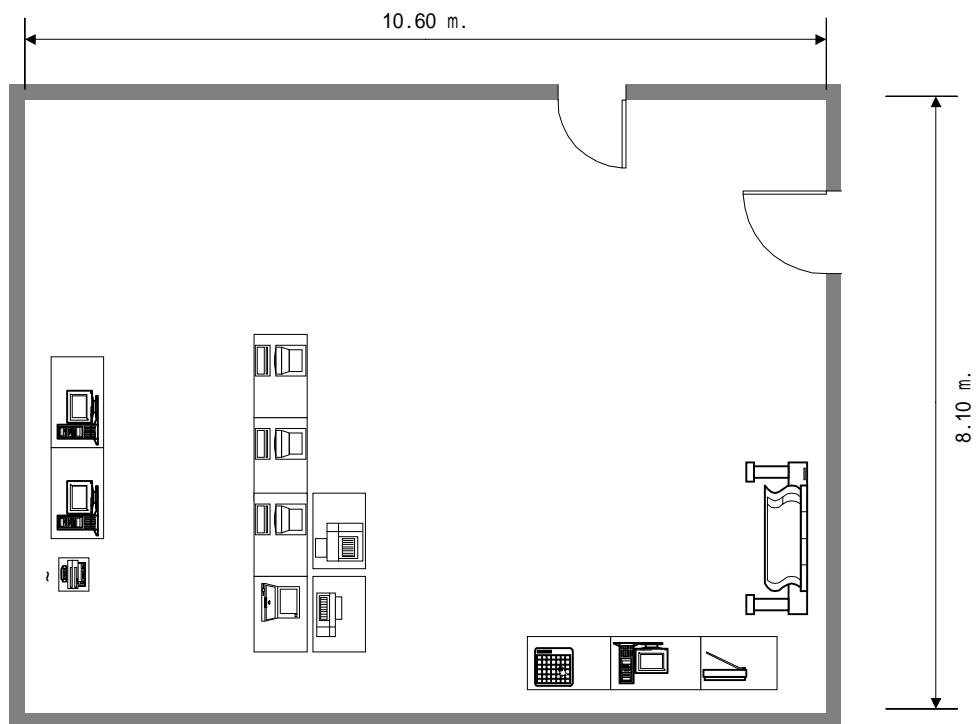
## 2. 石家庄市 (都市No. 2)



	Equipment	Unit	W (mm)	D (mm)	H (mm)		Equipment	Unit	W (mm)	D (mm)	H (mm)
①	Main Server	1	1200	700		⑧	Scanner	1	1000	700	
②	Member Server	1	1200	700		⑨	Plotter	1	2000	800	1300
③	GIS Server	1	1200	700		⑩	Digitizer	1	1100	700	
④	Desktop PC	4	1100	700		⑪	Switch	1	445	400	60
⑤	Note PC	1	1000	700		⑫	Hub	1			
⑥	Printer (L. B.)	1	1000	700		⑬	Router	1			
⑦	Printer (I. J.)	1	1100	700		⑭	Modem	1			

コンピュータ室フロアレイアウト (1/100)

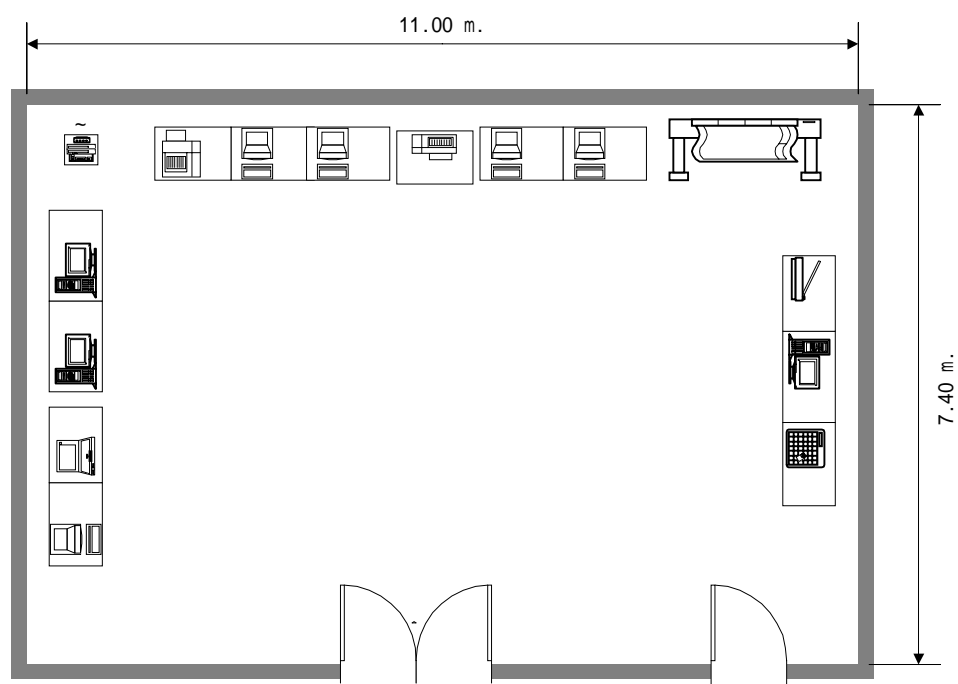
### 3. 秦皇島市（都市No. 5）



	Equipment	Unit	W (mm)	D (mm)	H (mm)		Equipment	Unit	W (mm)	D (mm)	H (mm)
①	Main Server	1	1200	700		⑧	Scanner	1	1000	700	
②	Member Server	1	1200	700		⑨	Plotter	1	2000	800	1300
③	GIS Server	1	1200	700		⑩	Digitizer	1	1100	700	
④	Desktop PC	3	1100	700		⑪	Switch	1	445	400	60
⑤	Note PC	1	1000	700		⑫	Hub	1			
⑥	Printer (L. B.)	1	1000	700		⑬	Router	1			
⑦	Printer (I. J.)	1	1100	700		⑭	Modem	1			

コンピュータ室フロアレイアウト (1/100)

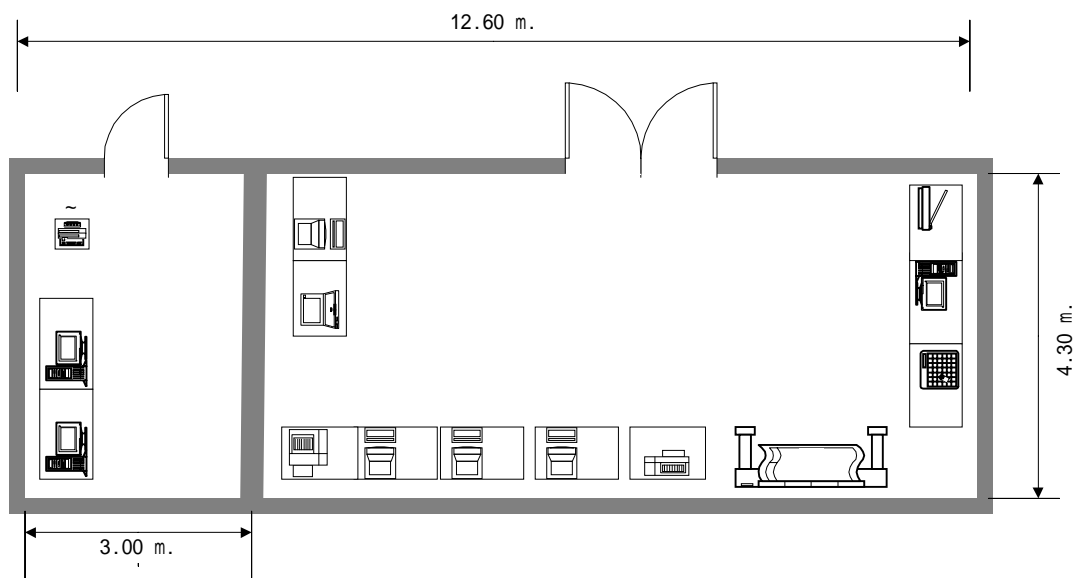
#### 4 . 太原市 ( 都市 N 0 . 8 )



	Equipment	Unit	W (mm)	D (mm)	H (mm)		Equipment	Unit	W (mm)	D (mm)	H (mm)
①	Main Server	1	1200	700		⑧	Scanner	1	1000	700	
②	Member Server	1	1200	700		⑨	Plotter	1	2000	800	1300
③	GIS Server	1	1200	700		⑩	Digitizer	1	1100	700	
④	Desktop PC	5	1100	700		⑪	Switch	1	445	400	60
⑤	Note PC	1	1000	700		⑫	Hub	1			
⑥	Printer ( L. B. )	1	1000	700		⑬	Router	1			
⑦	Printer ( I. J. )	1	1100	700		⑭	Modem	1			

コンピュータ室フロアレイアウト (1/100)

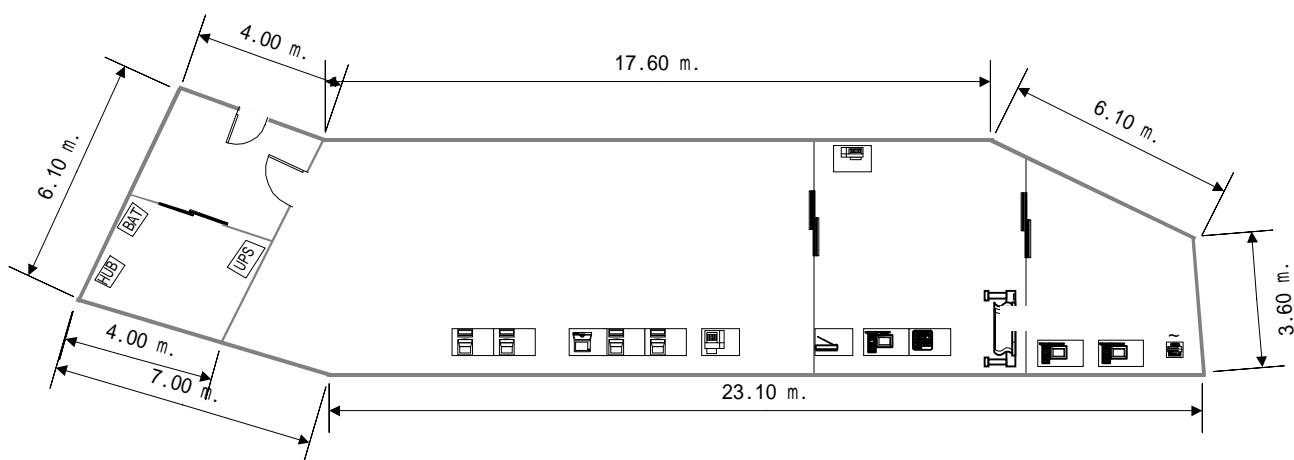
5. 呼和浩特市 (都市 No. 13)



	Equipment	Unit	W (mm)	D (mm)	H (mm)		Equipment	Unit	W (mm)	D (mm)	H (mm)
①	Main Server	1	1200	700		⑧	Scanner	1	1000	700	
②	Member Server	1	1200	700		⑨	Plotter	1	2000	800	1300
③	GIS Server	1	1200	700		⑩	Digitizer	1	1100	700	
④	Desktop PC	4	1100	700		⑪	Switch	1	445	400	60
⑤	Note PC	1	1000	700		⑫	Hub	1			
⑥	Printer ( L. B. )	1	1000	700		⑬	Router	1			
⑦	Printer ( I. J. )	1	1100	700		⑭	Modem	1			

コンピュータ室フロアレイアウト (1/100)

6 . 瀋陽市 ( 都市 No . 1 4 )

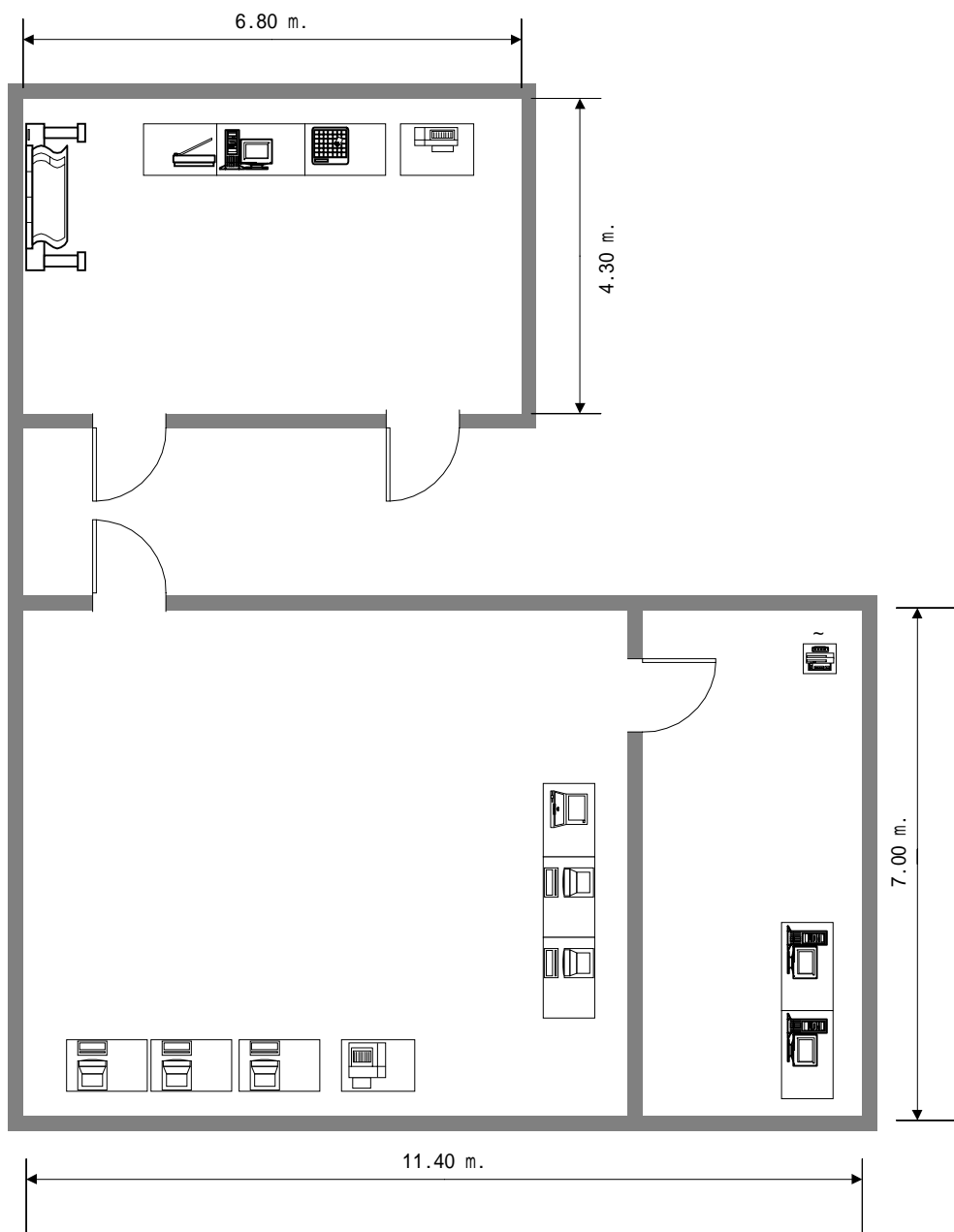


	Equipment	Unit	W (mm)	D (mm)	H (mm)		Equipment	Unit	W (mm)	D (mm)	H (mm)
①	Main Server	1	1200	700		⑧	Scanner	1	1000	700	
②	Member Server	1	1200	700		⑨	Plotter	1	2000	800	1300
③	GIS Server	1	1200	700		⑩	Digitizer	1	1100	700	
④	Desktop PC	4	1100	700		⑪	Switch	1	445	400	60
⑤	Note PC	1	1000	700		⑫	Hub	1			
⑥	Printer ( L. B. )	1	1000	700		⑬	Router	1			
⑦	Printer ( I. J. )	1	1100	700		⑭	Modem	1			

コンピュータ室フロアレイアウト (1/200)



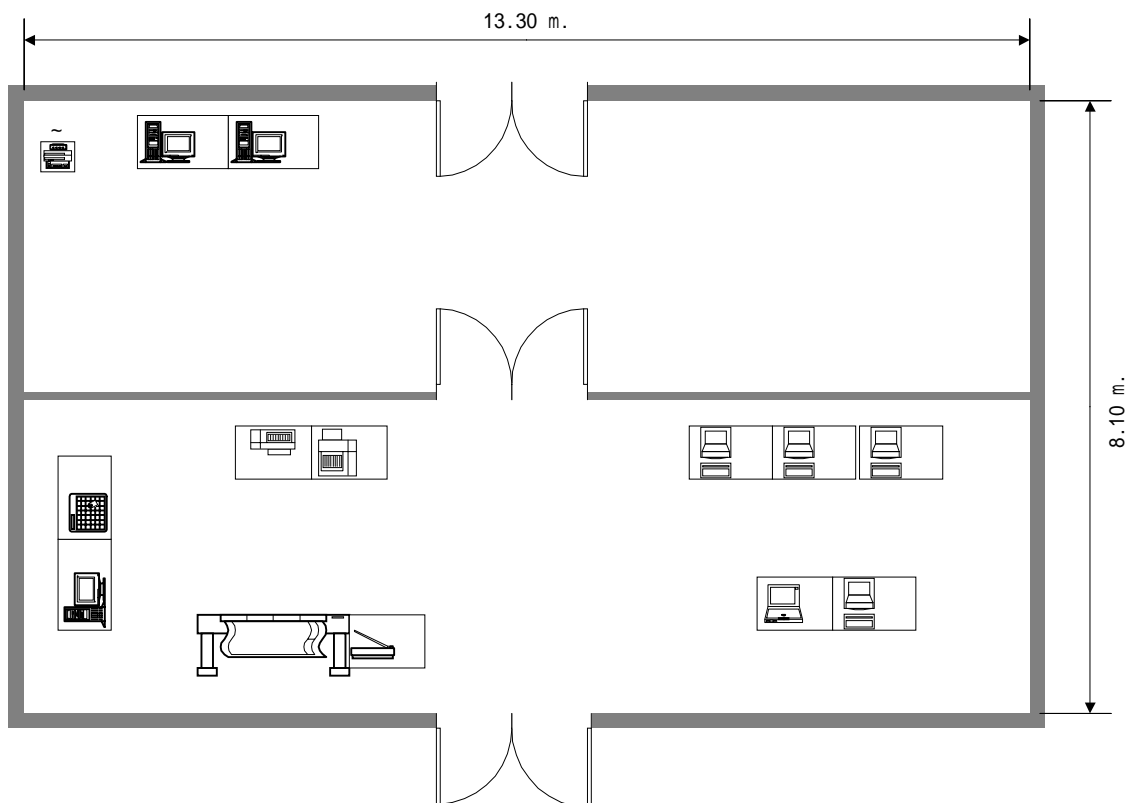
7. 大連市 (都市No. 15)



	Equipment	Unit	W (mm)	D (mm)	H (mm)		Equipment	Unit	W (mm)	D (mm)	H (mm)
①	Main Server	1	1200	700		⑧	Scanner	1	1000	700	
②	Member Server	1	1200	700		⑨	Plotter	1	2000	800	1300
③	GIS Server	1	1200	700		⑩	Digitizer	1	1100	700	
④	Desktop PC	5	1100	700		⑪	Switch	1	445	400	60
⑤	Note PC	1	1000	700		⑫	Hub	1			
⑥	Printer ( L. B. )	1	1000	700		⑬	Router	1			
⑦	Printer ( I. J. )	1	1100	700		⑭	Modem	1			

コンピュータ室フロアレイアウト (1/100)

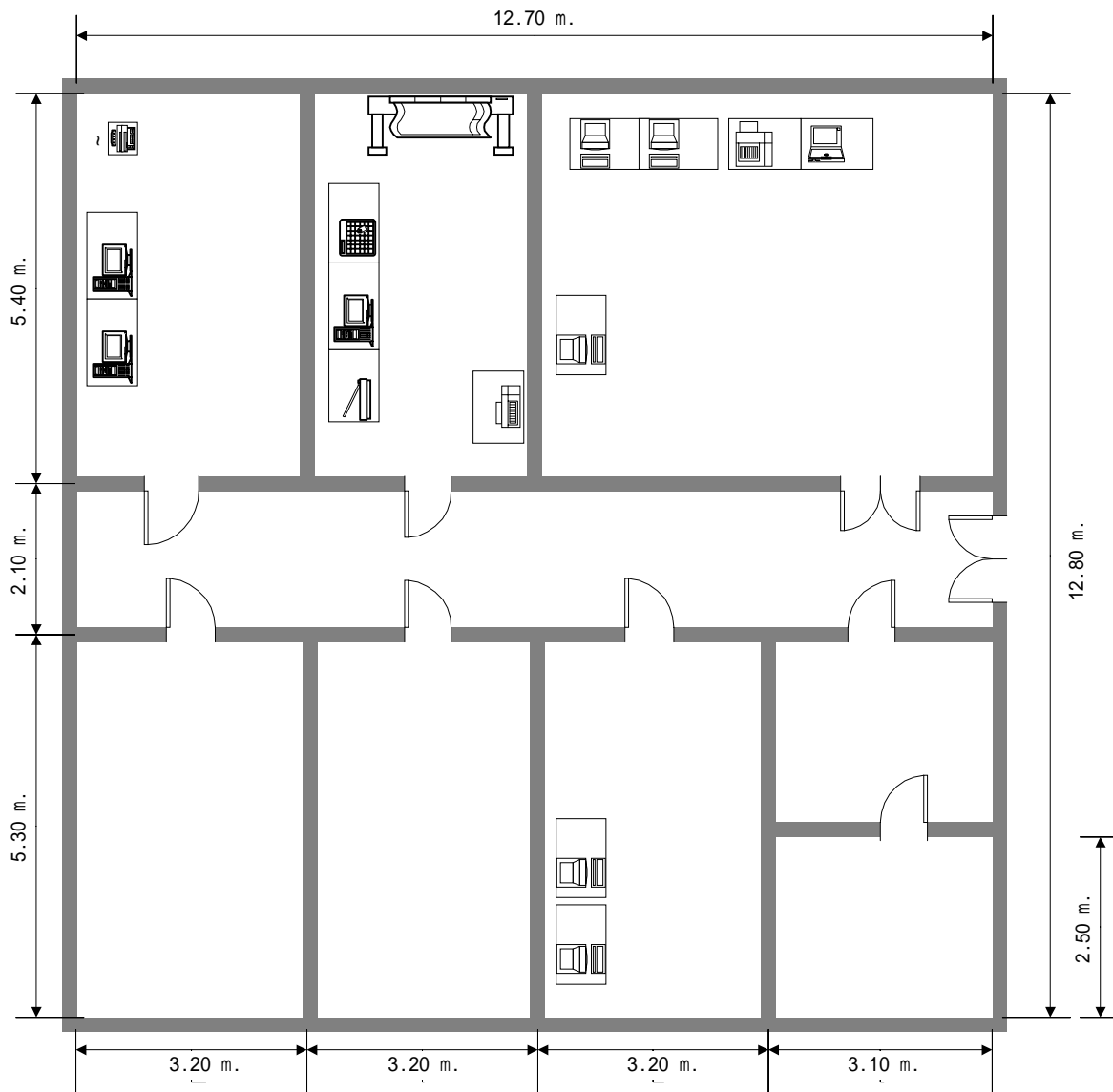
8 . 長春 ( 都市 No . 2 1 )



	Equipment	Unit	W (mm)	D (mm)	H (mm)		Equipment	Unit	W (mm)	D (mm)	H (mm)
①	Main Server	1	1200	700		⑧	Scanner	1	1000	700	
②	Member Server	1	1200	700		⑨	Plotter	1	2000	800	1300
③	GIS Server	1	1200	700		⑩	Digitizer	1	1100	700	
④	Desktop PC	4	1100	700		⑪	Switch	1	445	400	60
⑤	Note PC	1	1000	700		⑫	Hub	1			
⑥	Printer ( L. B. )	1	1000	700		⑬	Router	1			
⑦	Printer ( I. J. )	1	1100	700		⑭	Modem	1			

コンピュータ室フロアレイアウト (1/100)

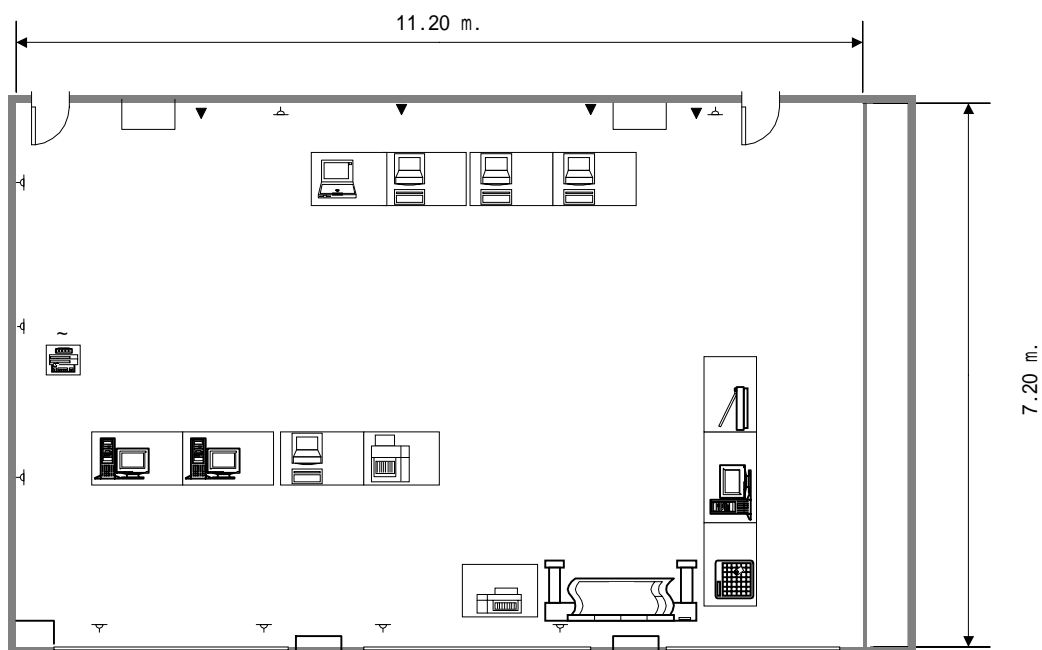
9. 哈爾濱市 (都市No. 25)



	Equipment	Unit	W (mm)	D (mm)	H (mm)		Equipment	Unit	W (mm)	D (mm)	H (mm)
①	Main Server	1	1200	700		⑧	Scanner	1	1000	700	
②	Member Server	1	1200	700		⑨	Plotter	1	2000	800	1300
③	GIS Server	1	1200	700		⑩	Digitizer	1	1100	700	
④	Desktop PC	5	1100	700		⑪	Switch	1	445	400	60
⑤	Note PC	1	1000	700		⑫	Hub	1			
⑥	Printer (L. B.)	1	1000	700		⑬	Router	1			
⑦	Printer (I. J.)	1	1100	700		⑭	Modem	1			

コンピュータ室フロアレイアウト (1/100)

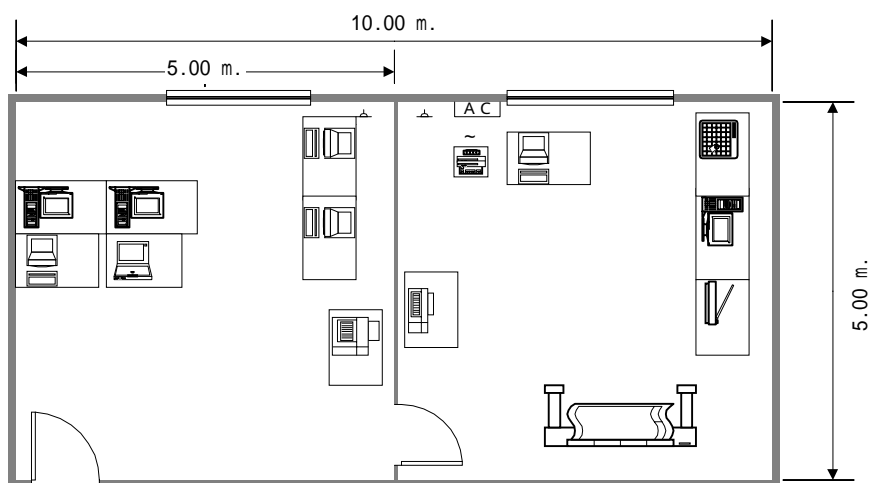
10. 無錫市（都市No. 32）



	Equipment	Unit	W (mm)	D (mm)	H (mm)		Equipment	Unit	W (mm)	D (mm)	H (mm)
①	Main Server	1	1200	700		⑧	Scanner	1	1000	700	
②	Member Server	1	1200	700		⑨	Plotter	1	2000	800	1300
③	GIS Server	1	1200	700		⑩	Digitizer	1	1100	700	
④	Desktop PC	4	1100	700		⑪	Switch	1	445	400	60
⑤	Note PC	1	1000	700		⑫	Hub	1			
⑥	Printer (L. B.)	1	1000	700		⑬	Router	1			
⑦	Printer (I. J.)	1	1100	700		⑭	Modem	1			

コンピュータ室フロアレイアウト (1/100)

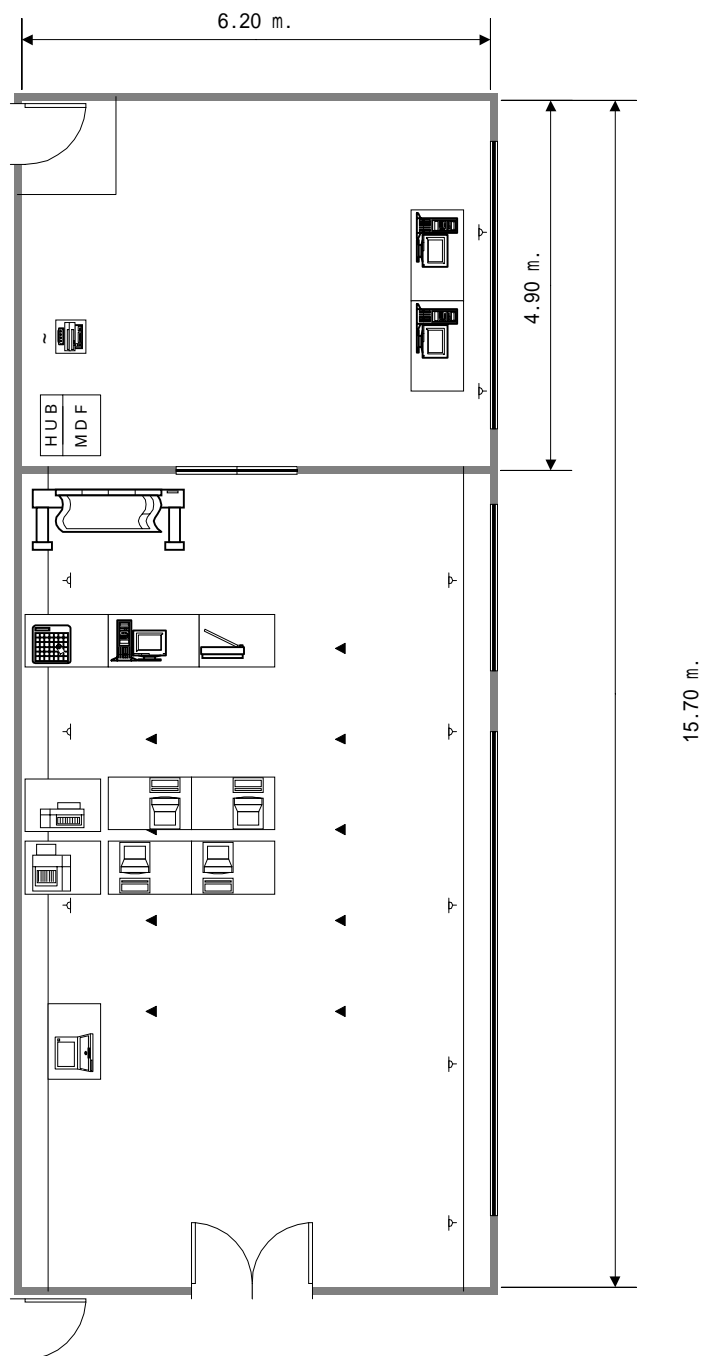
11. 徐州市 (都市No. 33)



	Equipment	Unit	W (mm)	D (mm)	H (mm)		Equipment	Unit	W (mm)	D (mm)	H (mm)
①	Main Server	1	1200	700		⑧	Scanner	1	1000	700	
②	Member Server	1	1200	700		⑨	Plotter	1	2000	800	1300
③	GIS Server	1	1200	700		⑩	Digitizer	1	1100	700	
④	Desktop PC	4	1100	700		⑪	Switch	1	445	400	60
⑤	Note PC	1	1000	700		⑫	Hub	1			
⑥	Printer (L. B.)	1	1000	700		⑬	Router	1			
⑦	Printer (I. J.)	1	1100	700		⑭	Modem	1			

コンピュータ室フロアレイアウト (1/100)

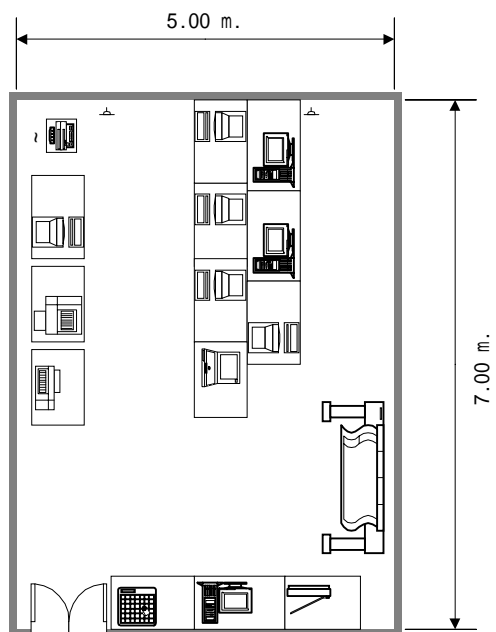
1 2 . 常州市 ( 都市 No . 3 4 )



	Equipment	Unit	W (mm)	D (mm)	H (mm)		Equipment	Unit	W (mm)	D (mm)	H (mm)
①	Main Server	1	1200	700		⑧	Scanner	1	1000	700	
②	Member Server	1	1200	700		⑨	Plotter	1	2000	800	1300
③	GIS Server	1	1200	700		⑩	Digitizer	1	1100	700	
④	Desktop PC	4	1100	700		⑪	Switch	1	445	400	60
⑤	Note PC	1	1000	700		⑫	Hub	1			
⑥	Printer ( L. B. )	1	1000	700		⑬	Router	1			
⑦	Printer ( I. J. )	1	1100	700		⑭	Modem	1			

コンピュータ室フロアレイアウト (1/100)

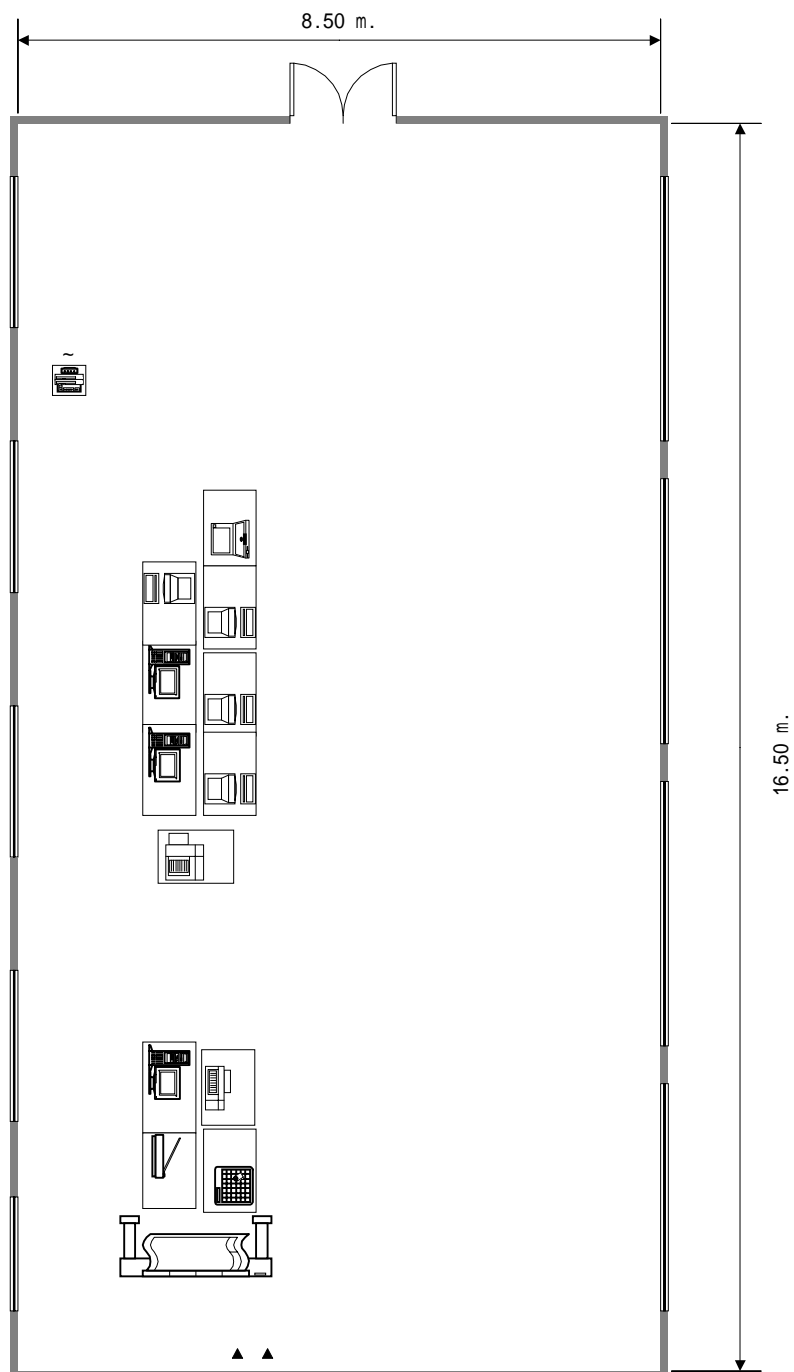
### 13. 蘇州市 (都市No. 35)



	Equipment	Unit	W (mm)	D (mm)	H (mm)		Equipment	Unit	W (mm)	D (mm)	H (mm)
①	Main Server	1	1200	700		⑧	Scanner	1	1000	700	
②	Member Server	1	1200	700		⑨	Plotter	1	2000	800	1300
③	GIS Server	1	1200	700		⑩	Digitizer	1	1100	700	
④	Desktop PC	5	1100	700		⑪	Switch	1	445	400	60
⑤	Note PC	1	1000	700		⑫	Hub	1			
⑥	Printer (L. B.)	1	1000	700		⑬	Router	1			
⑦	Printer (I. J.)	1	1100	700		⑭	Modem	1			

コンピュータ室フロアレイアウト (1/100)

14. 淮陰市 (都市No. 37)

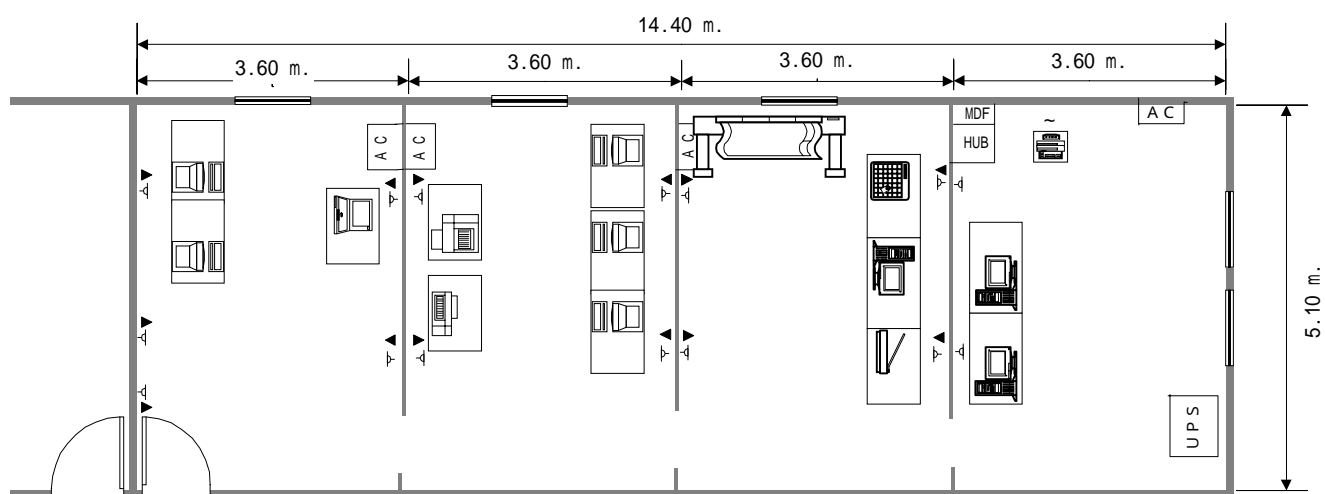


	Equipment	Unit	W (mm)	D (mm)	H (mm)		Equipment	Unit	W (mm)	D (mm)	H (mm)
①	Main Server	1	1200	700		⑧	Scanner	1	1000	700	
②	Member Server	1	1200	700		⑨	Plotter	1	2000	800	1300
③	GIS Server	1	1200	700		⑩	Digitizer	1	1100	700	
④	Desktop PC	4	1100	700		⑪	Switch	1	445	400	60
⑤	Note PC	1	1000	700		⑫	Hub	1			
⑥	Printer (L. B.)	1	1000	700		⑬	Router	1			
⑦	Printer (I. J.)	1	1100	700		⑭	Modem	1			

コンピュータ室フロアレイアウト (1/100)



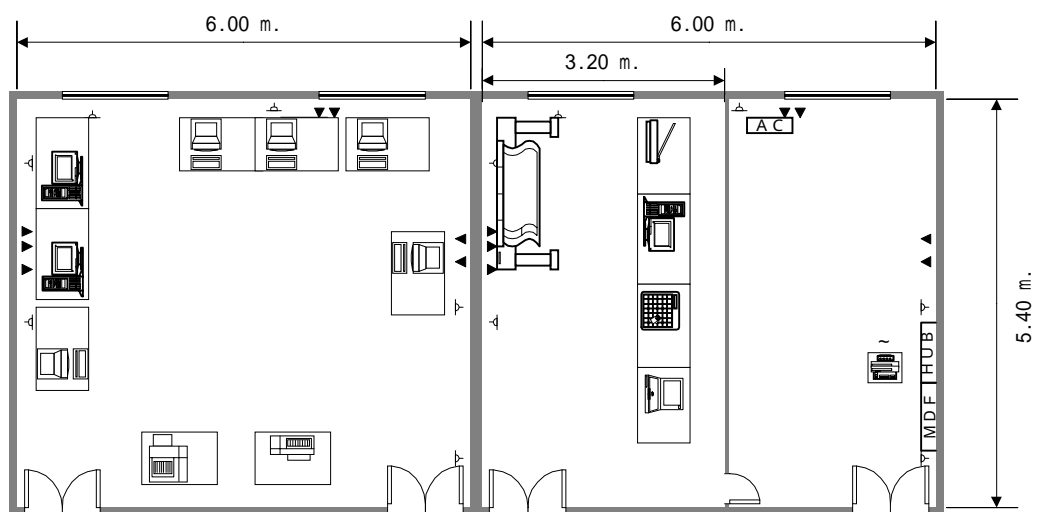
15 . 杭州市 ( 都市 No . 38 )



	Equipment	Unit	W (mm)	D (mm)	H (mm)		Equipment	Unit	W (mm)	D (mm)	H (mm)
①	Main Server	1	1200	700		⑧	Scanner	1	1000	700	
②	Member Server	1	1200	700		⑨	Plotter	1	2000	800	1300
③	GIS Server	1	1200	700		⑩	Digitizer	1	1100	700	
④	Desktop PC	5	1100	700		⑪	Switch	1	445	400	60
⑤	Note PC	1	1000	700		⑫	Hub	1			
⑥	Printer ( L. B. )	1	1000	700		⑬	Router	1			
⑦	Printer ( I. J. )	1	1100	700		⑭	Modem	1			

コンピュータ室フロアレイアウト (1/100)

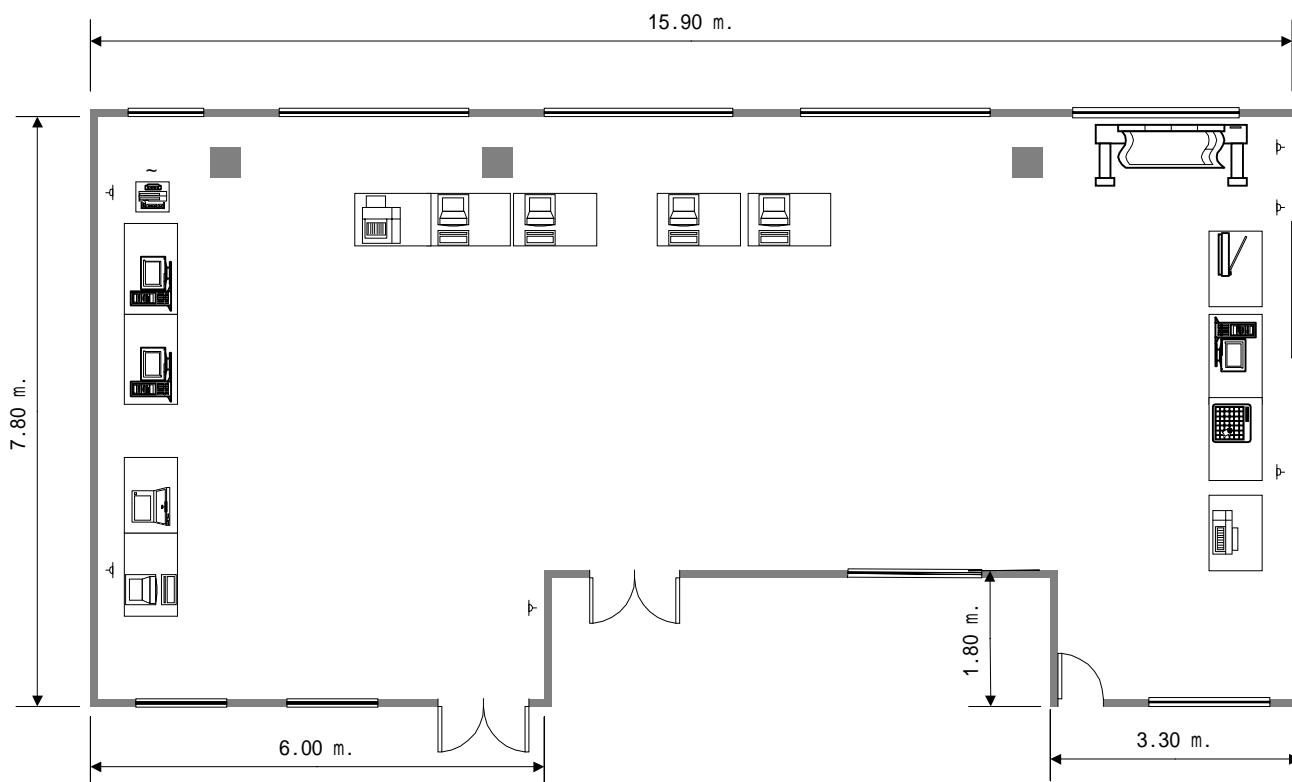
16. 寧波市 (都市No. 39)



	Equipment	Unit	W (mm)	D (mm)	H (mm)		Equipment	Unit	W (mm)	D (mm)	H (mm)
①	Main Server	1	1200	700		⑧	Scanner	1	1000	700	
②	Member Server	1	1200	700		⑨	Plotter	1	2000	800	1300
③	GIS Server	1	1200	700		⑩	Digitizer	1	1100	700	
④	Desktop PC	5	1100	700		⑪	Switch	1	445	400	60
⑤	Note PC	1	1000	700		⑫	Hub	1			
⑥	Printer (L. B.)	1	1000	700		⑬	Router	1			
⑦	Printer (I. J.)	1	1100	700		⑭	Modem	1			

コンピュータ室フロアレイアウト (1/100)

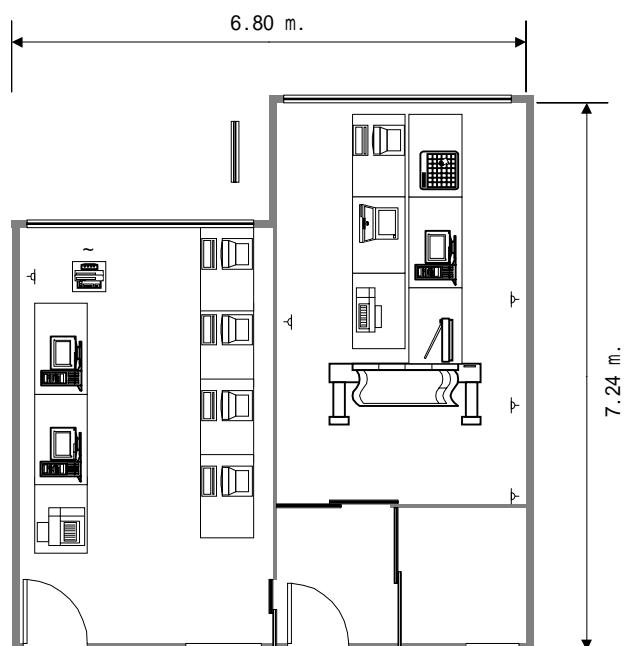
17. 温州市 (都市No. 41)



	Equipment	Unit	W (mm)	D (mm)	H (mm)		Equipment	Unit	W (mm)	D (mm)	H (mm)
①	Main Server	1	1200	700		⑧	Scanner	1	1000	700	
②	Member Server	1	1200	700		⑨	Plotter	1	2000	800	1300
③	GIS Server	1	1200	700		⑩	Digitizer	1	1100	700	
④	Desktop PC	5	1100	700		⑪	Switch	1	445	400	60
⑤	Note PC	1	1000	700		⑫	Hub	1			
⑥	Printer (L. B.)	1	1000	700		⑬	Router	1			
⑦	Printer (I. J.)	1	1100	700		⑭	Modem	1			

コンピュータ室フロアレイアウト (1/100)

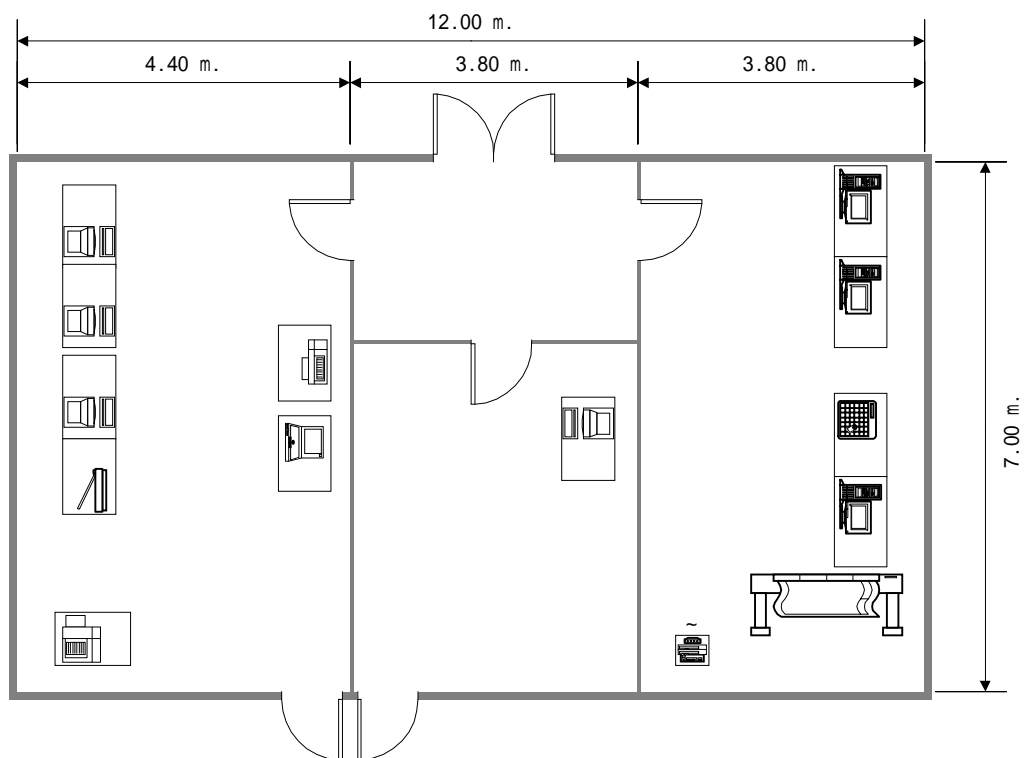
18 . 合肥市 ( 都市 No . 42 )



	Equipment	Unit	W (mm)	D (mm)	H (mm)		Equipment	Unit	W (mm)	D (mm)	H (mm)
①	Main Server	1	1200	700		⑧	Scanner	1	1000	700	
②	Member Server	1	1200	700		⑨	Plotter	1	2000	800	1300
③	GIS Server	1	1200	700		⑩	Digitizer	1	1100	700	
④	Desktop PC	5	1100	700		⑪	Switch	1	445	400	60
⑤	Note PC	1	1000	700		⑫	Hub	1			
⑥	Printer ( L. B. )	1	1000	700		⑬	Router	1			
⑦	Printer ( I. J. )	1	1100	700		⑭	Modem	1			

コンピュータ室フロアレイアウト ( 1/100 )

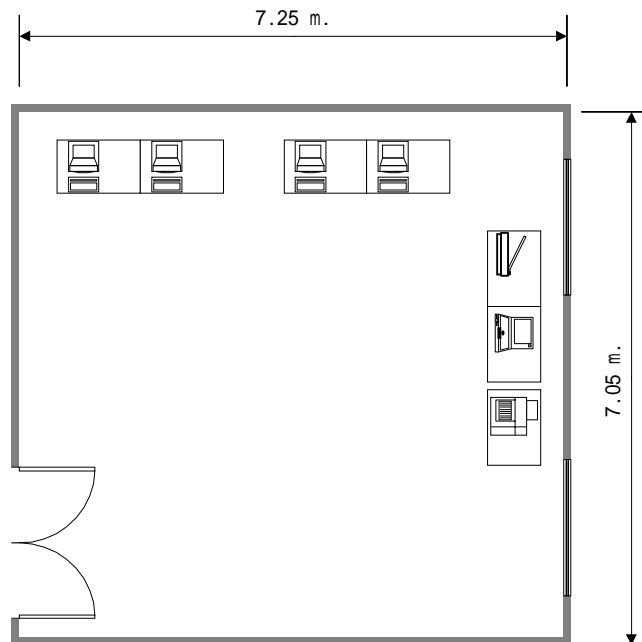
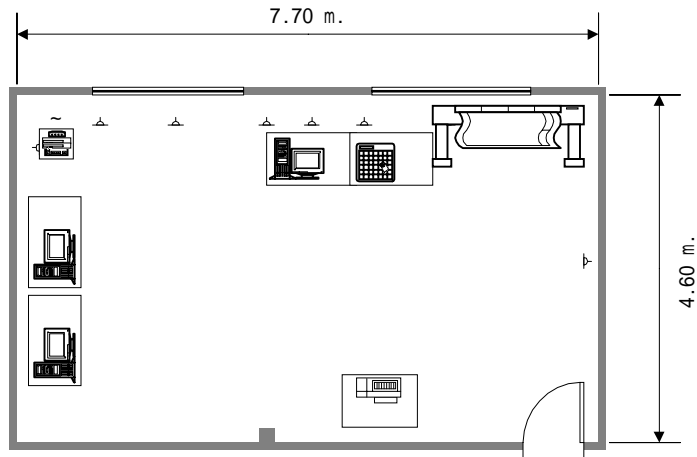
19. 淮南市（都市NO.44）



	Equipment	Unit	W (mm)	D (mm)	H (mm)		Equipment	Unit	W (mm)	D (mm)	H (mm)
①	Main Server	1	1200	700		⑧	Scanner	1	1000	700	
②	Member Server	1	1200	700		⑨	Plotter	1	2000	800	1300
③	GIS Server	1	1200	700		⑩	Digitizer	1	1100	700	
④	Desktop PC	4	1100	700		⑪	Switch	1	445	400	60
⑤	Note PC	1	1000	700		⑫	Hub	1			
⑥	Printer (L. B.)	1	1000	700		⑬	Router	1			
⑦	Printer (I. J.)	1	1100	700		⑭	Modem	1			

コンピュータ室フロアレイアウト (1/100)

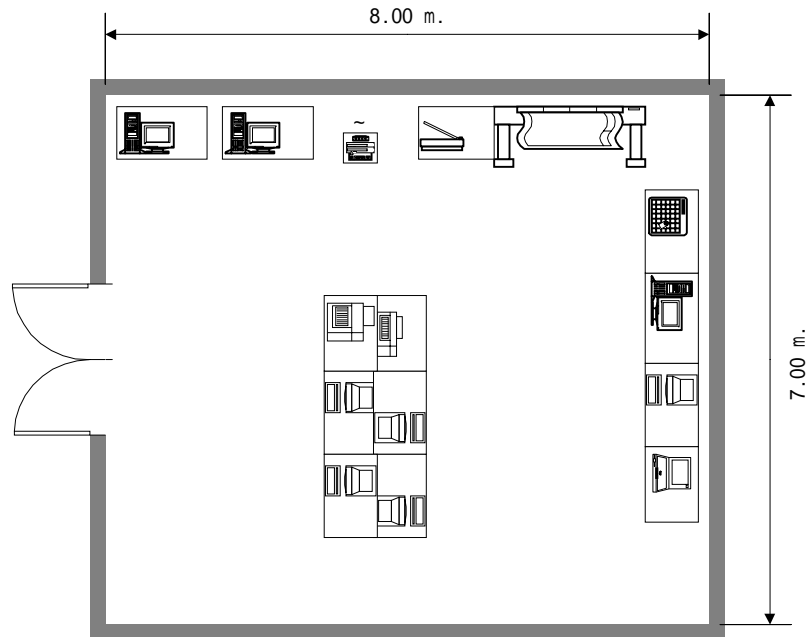
20 . 蚌埠市(都市No . 45)



	Equipment	Unit	W (mm)	D (mm)	H (mm)		Equipment	Unit	W (mm)	D (mm)	H (mm)
①	Main Server	1	1200	700		⑧	Scanner	1	1000	700	
②	Member Server	1	1200	700		⑨	Plotter	1	2000	800	1300
③	GIS Server	1	1200	700		⑩	Digitizer	1	1100	700	
④	Desktop PC	4	1100	700		⑪	Switch	1	445	400	60
⑤	Note PC	1	1000	700		⑫	Hub	1			
⑥	Printer ( L. B. )	1	1000	700		⑬	Router	1			
⑦	Printer ( I. J. )	1	1100	700		⑭	Modem	1			

コンピュータ室フロアレイアウト (1/100)

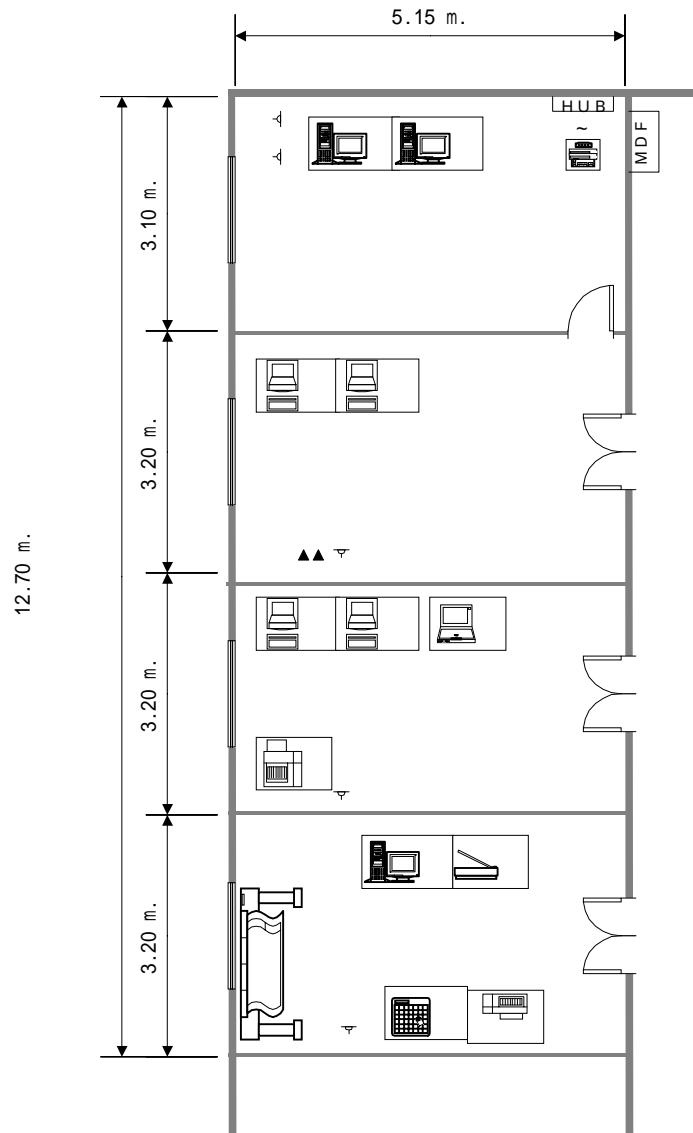
21. 青島市（都市No. 53）



	Equipment	Unit	W (mm)	D (mm)	H (mm)		Equipment	Unit	W (mm)	D (mm)	H (mm)
①	Main Server	1	1200	700		⑧	Scanner	1	1000	700	
②	Member Server	1	1200	700		⑨	Plotter	1	2000	800	1300
③	GIS Server	1	1200	700		⑩	Digitizer	1	1100	700	
④	Desktop PC	5	1100	700		⑪	Switch	1	445	400	60
⑤	Note PC	1	1000	700		⑫	Hub	1			
⑥	Printer ( L. B. )	1	1000	700		⑬	Router	1			
⑦	Printer ( I. J. )	1	1100	700		⑭	Modem	1			

コンピュータ室フロアレイアウト (1/100)

22. 栗江市（都市No. 55）

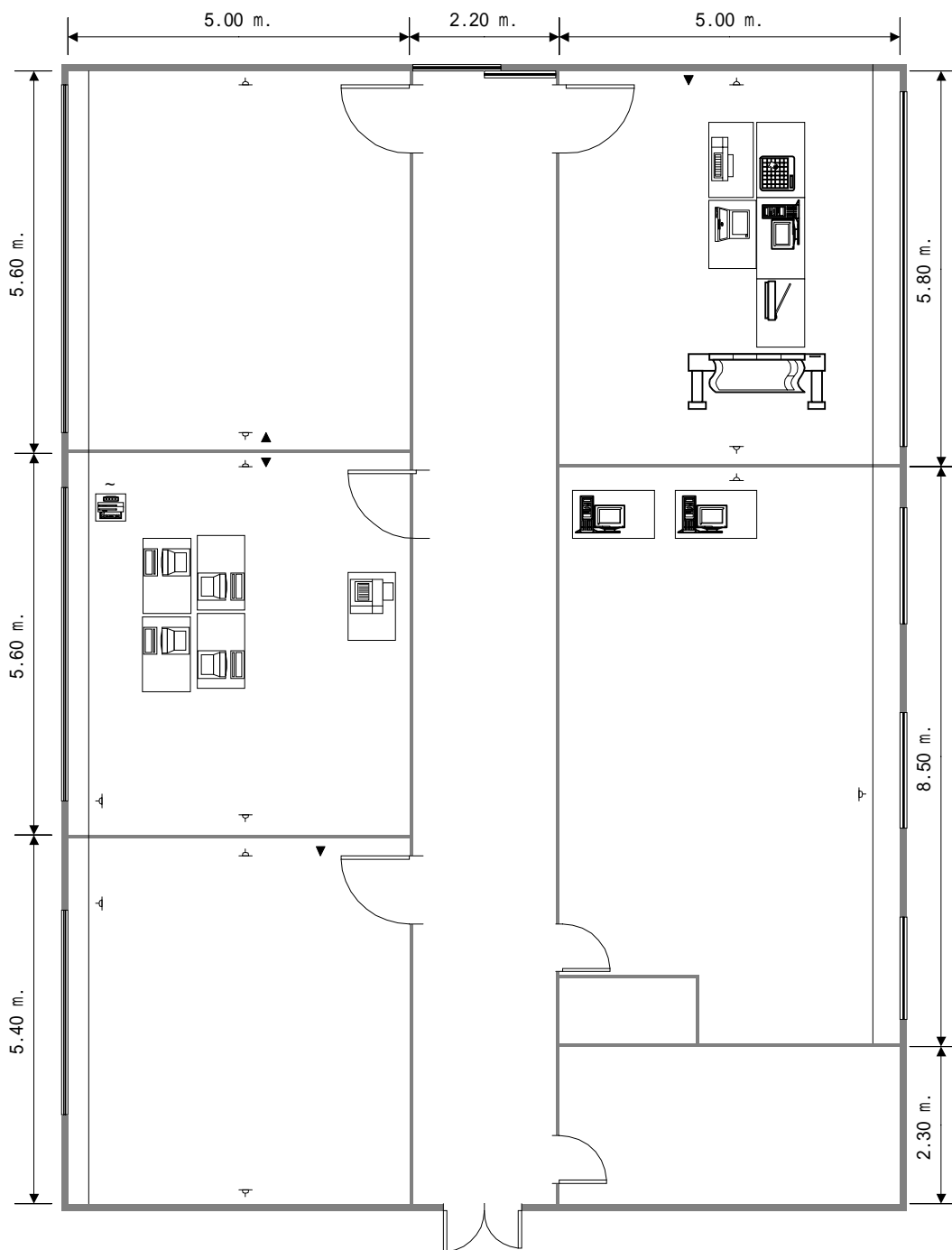


	Equipment	Unit	W (mm)	D (mm)	H (mm)		Equipment	Unit	W (mm)	D (mm)	H (mm)
①	Main Server	1	1200	700		⑧	Scanner	1	1000	700	
②	Member Server	1	1200	700		⑨	Plotter	1	2000	800	1300
③	GIS Server	1	1200	700		⑩	Digitizer	1	1100	700	
④	Desktop PC	4	1100	700		⑪	Switch	1	445	400	60
⑤	Note PC	1	1000	700		⑫	Hub	1			
⑥	Printer ( L. B. )	1	1000	700		⑬	Router	1			
⑦	Printer ( I. J. )	1	1100	700		⑭	Modem	1			

コンピュータ室フロアレイアウト (1/100)



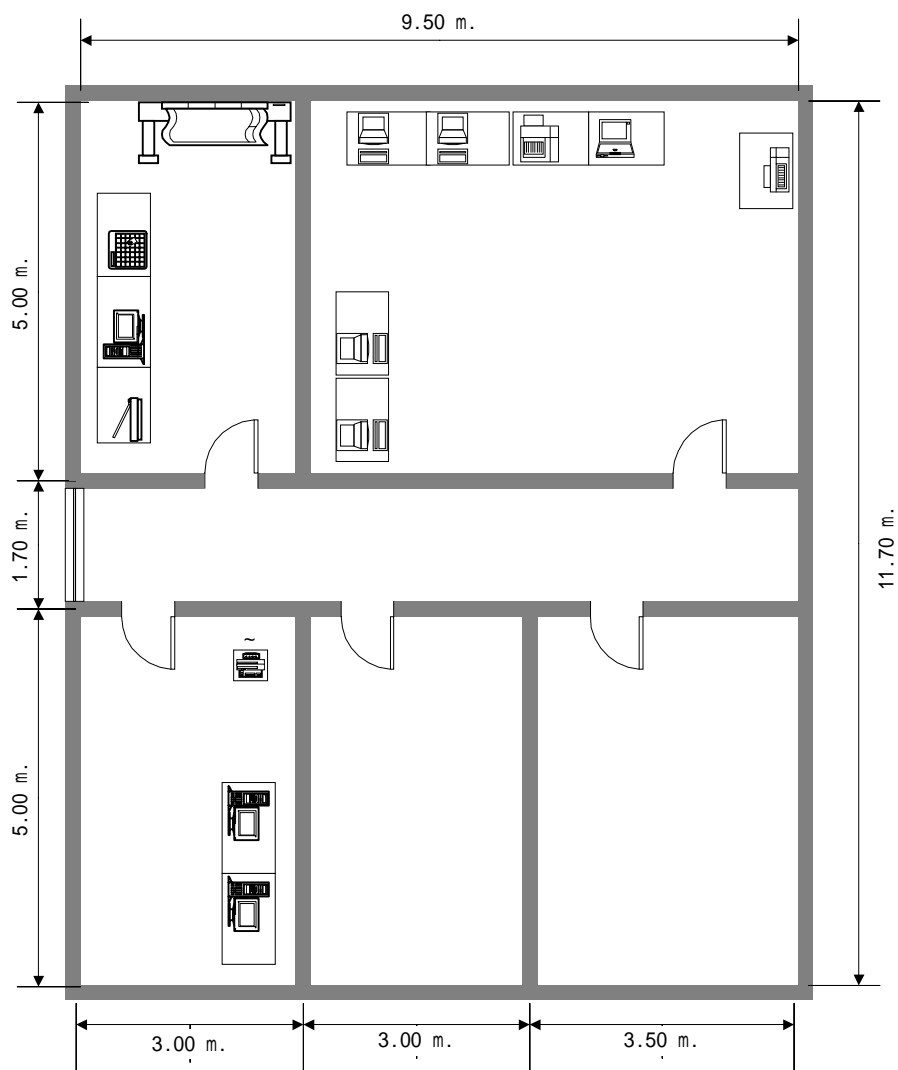
### 23. 濟寧市(都市No. 56)



	Equipment	Unit	W (mm)	D (mm)	H (mm)		Equipment	Unit	W (mm)	D (mm)	H (mm)
①	Main Server	1	1200	700		⑧	Scanner	1	1000	700	
②	Member Server	1	1200	700		⑨	Plotter	1	2000	800	1300
③	GIS Server	1	1200	700		⑩	Digitizer	1	1100	700	
④	Desktop PC	4	1100	700		⑪	Switch	1	445	400	60
⑤	Note PC	1	1000	700		⑫	Hub	1			
⑥	Printer (L. B.)	1	1000	700		⑬	Router	1			
⑦	Printer (I. J.)	1	1100	700		⑭	Modem	1			

コンピュータ室フロアレイアウト (1/100)

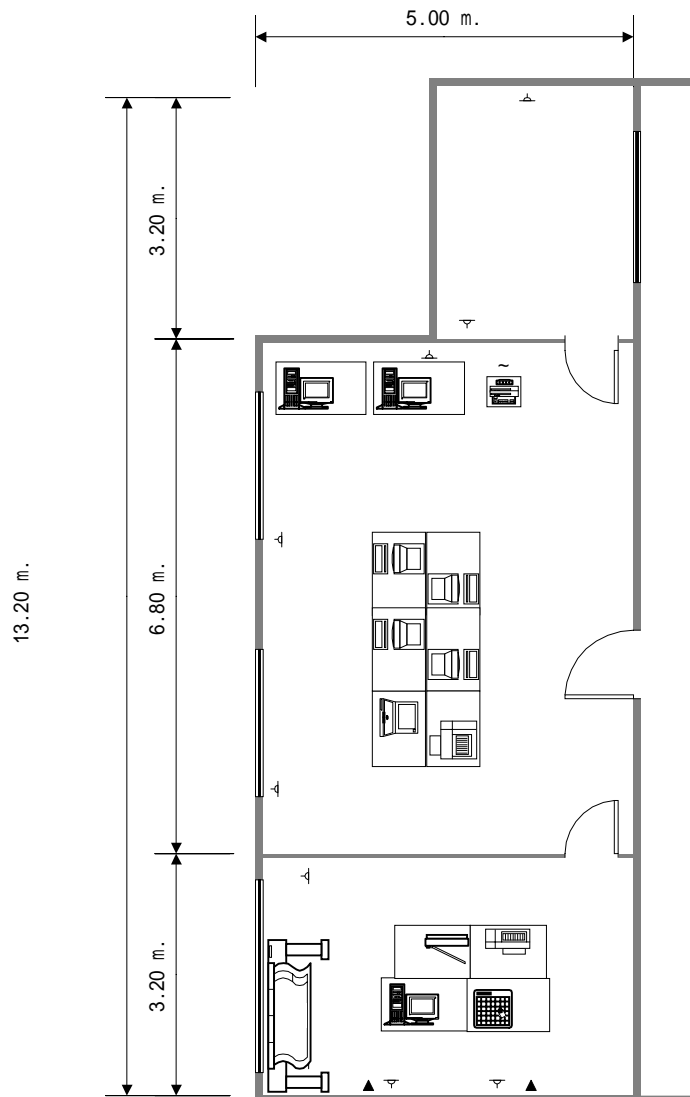
24. 煙台市 (都市No. 57)



	Equipment	Unit	W (mm)	D (mm)	H (mm)		Equipment	Unit	W (mm)	D (mm)	H (mm)
①	Main Server	1	1200	700		⑧	Scanner	1	1000	700	
②	Member Server	1	1200	700		⑨	Plotter	1	2000	800	1300
③	GIS Server	1	1200	700		⑩	Digitizer	1	1100	700	
④	Desktop PC	4	1100	700		⑪	Switch	1	445	400	60
⑤	Note PC	1	1000	700		⑫	Hub	1			
⑥	Printer (L. B.)	1	1000	700		⑬	Router	1			
⑦	Printer (I. J.)	1	1100	700		⑭	Modem	1			

コンピュータ室フロアレイアウト (1/100)

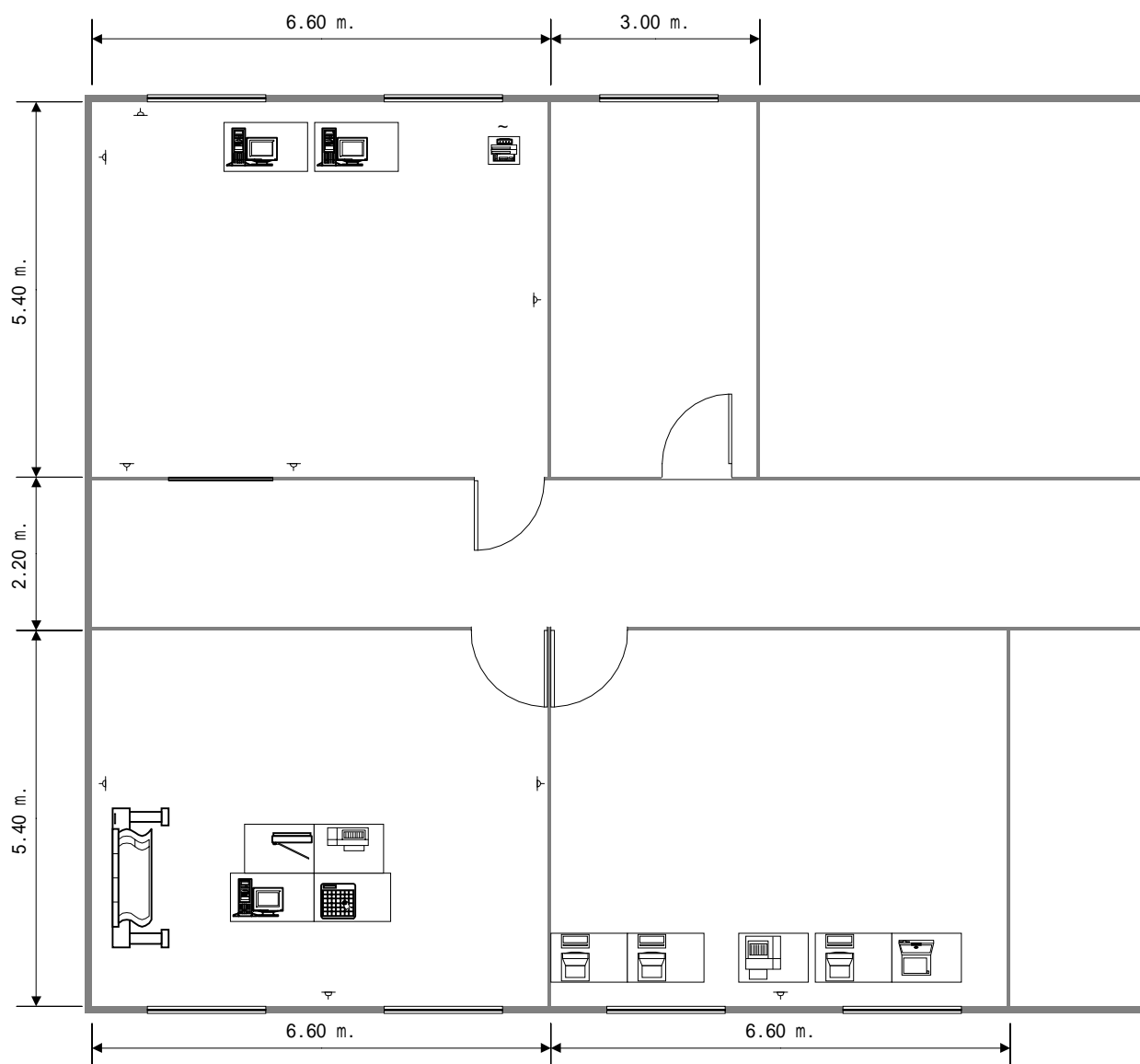
25 . 開封市 ( 都市 No . 58 )



	Equipment	Unit	W (mm)	D (mm)	H (mm)		Equipment	Unit	W (mm)	D (mm)	H (mm)
①	Main Server	1	1200	700		⑧	Scanner	1	1000	700	
②	Member Server	1	1200	700		⑨	Plotter	1	2000	800	1300
③	GIS Server	1	1200	700		⑩	Digitizer	1	1100	700	
④	Desktop PC	4	1100	700		⑪	Switch	1	445	400	60
⑤	Note PC	1	1000	700		⑫	Hub	1			
⑥	Printer ( L. B. )	1	1000	700		⑬	Router	1			
⑦	Printer ( I. J. )	1	1100	700		⑭	Modem	1			

コンピュータ室フロアレイアウト (1/100)

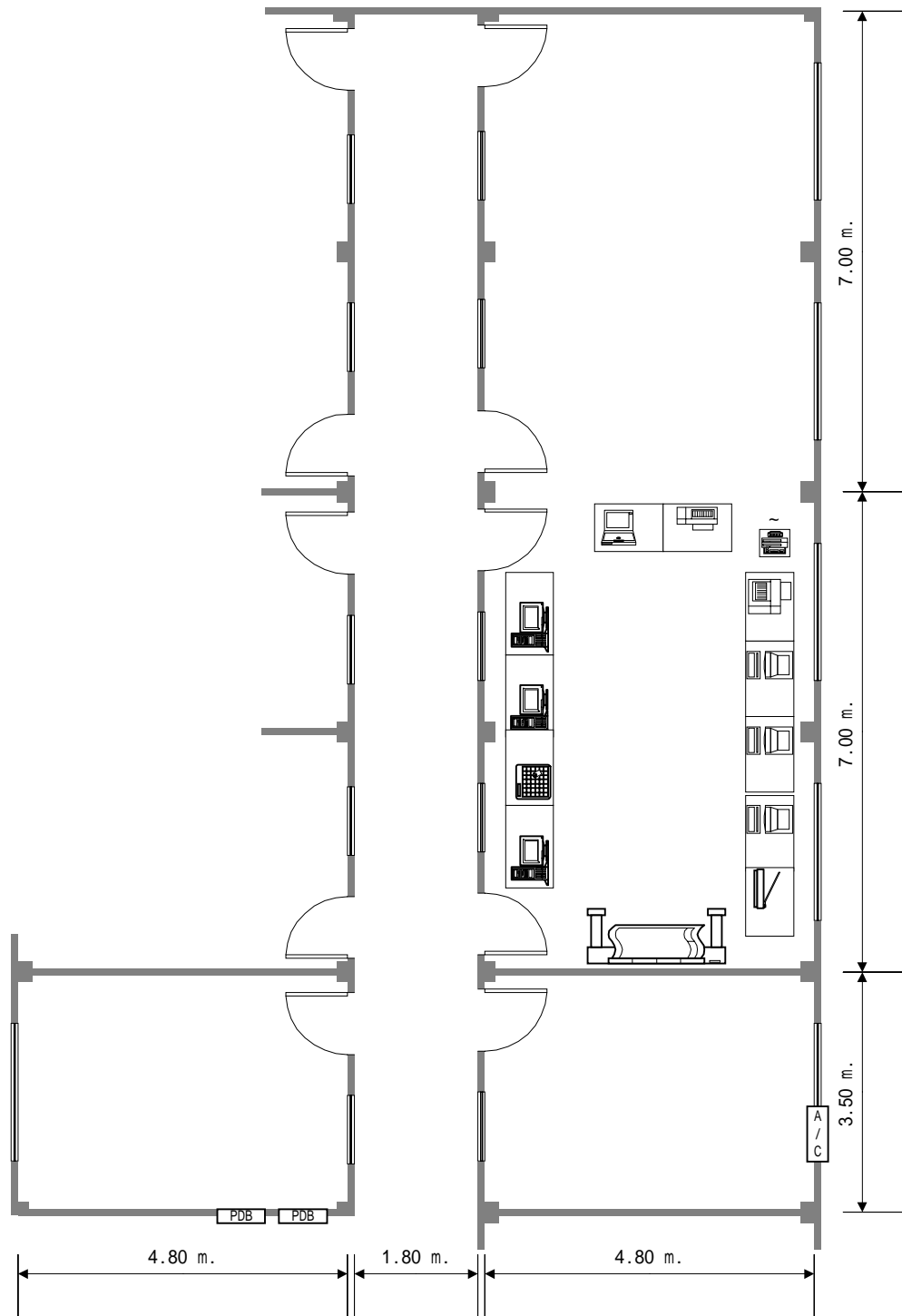
## 26. 平頂山市 (都市No. 60)



	Equipment	Unit	W (mm)	D (mm)	H (mm)		Equipment	Unit	W (mm)	D (mm)	H (mm)
①	Main Server	1	1200	700		⑧	Scanner	1	1000	700	
②	Member Server	1	1200	700		⑨	Plotter	1	2000	800	1300
③	GIS Server	1	1200	700		⑩	Digitizer	1	1100	700	
④	Desktop PC	3	1100	700		⑪	Switch	1	445	400	60
⑤	Note PC	1	1000	700		⑫	Hub	1			
⑥	Printer (L. B.)	1	1000	700		⑬	Router	1			
⑦	Printer (I. J.)	1	1100	700		⑭	Modem	1			

コンピュータ室フロアレイアウト (1/100)

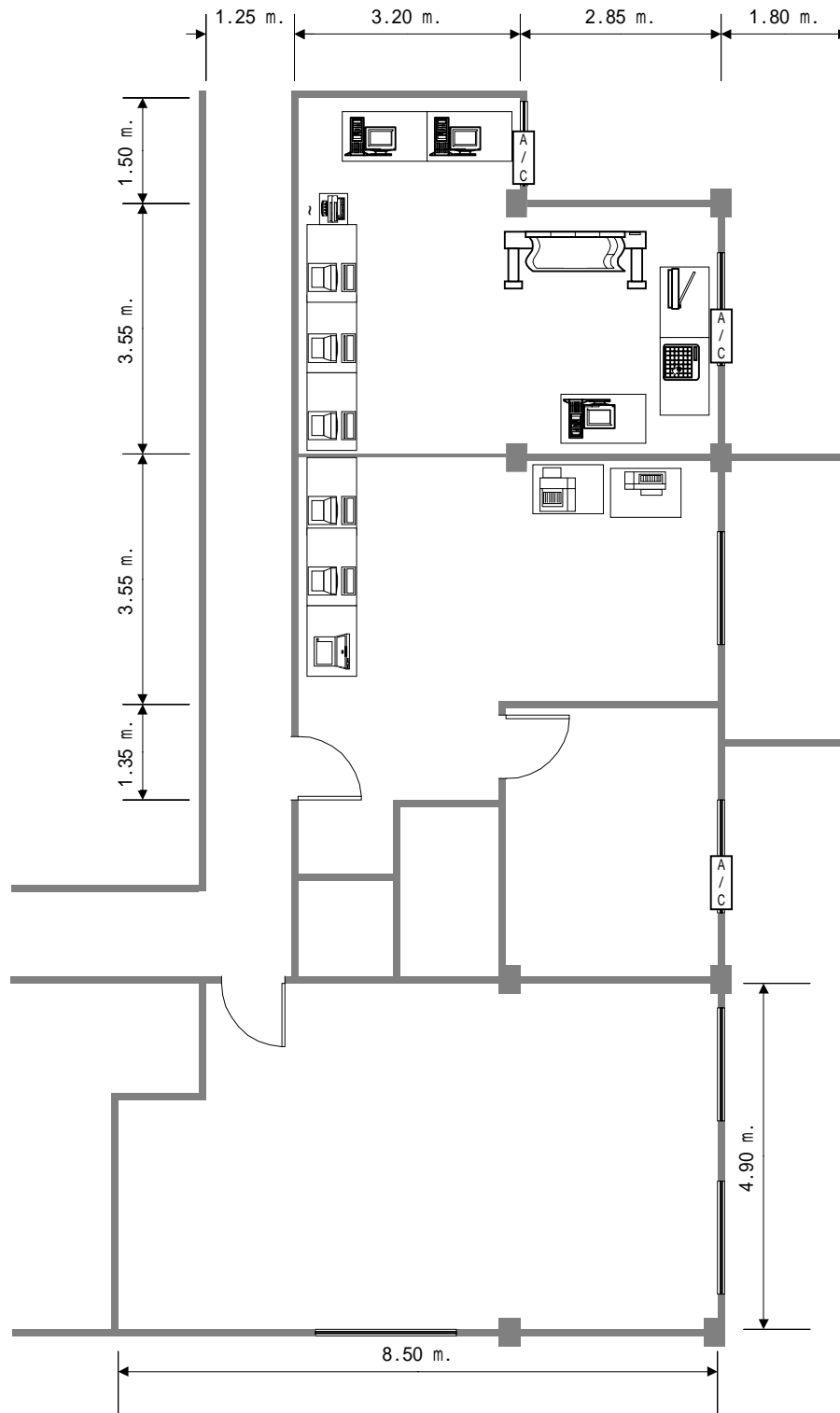
27. 長沙市(都市No. 66)



	Equipment	Unit	W (mm)	D (mm)	H (mm)		Equipment	Unit	W (mm)	D (mm)	H (mm)
①	Main Server	1	1200	700		⑧	Scanner	1	1000	700	
②	Member Server	1	1200	700		⑨	Plotter	1	2000	800	1300
③	GIS Server	1	1200	700		⑩	Digitizer	1	1100	700	
④	Desktop PC	3	1100	700		⑪	Switch	1	445	400	60
⑤	Note PC	1	1000	700		⑫	Hub	1			
⑥	Printer (L. B.)	1	1000	700		⑬	Router	1			
⑦	Printer (I. J.)	1	1100	700		⑭	Modem	1			

コンピュータ室フロアレイアウト (1/100)

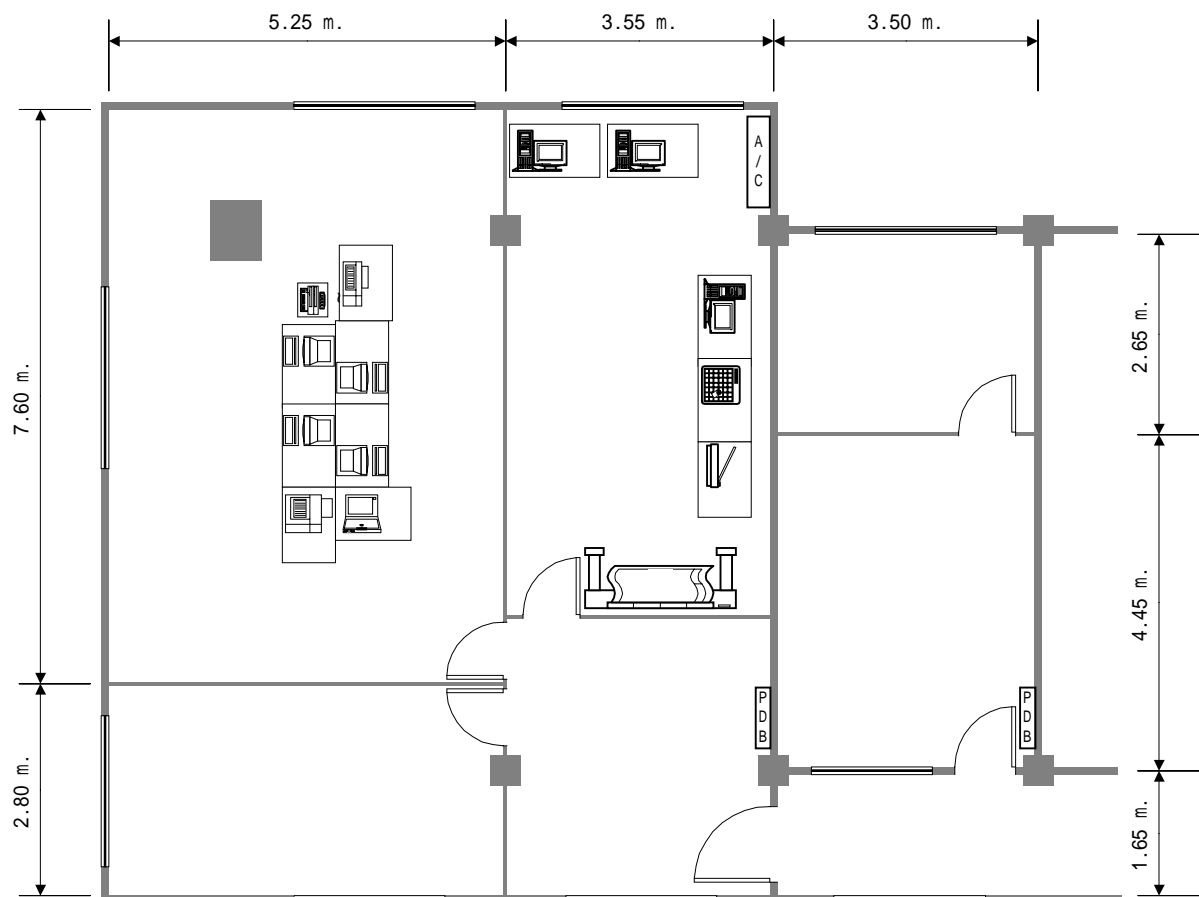
## 28 . 深圳市 ( 都市 No . 70 )



	Equipment	Unit	W (mm)	D (mm)	H (mm)		Equipment	Unit	W (mm)	D (mm)	H (mm)
①	Main Server	1	1200	700		⑧	Scanner	1	1000	700	
②	Member Server	1	1200	700		⑨	Plotter	1	2000	800	1300
③	GIS Server	1	1200	700		⑩	Digitizer	1	1100	700	
④	Desktop PC	5	1100	700		⑪	Switch	1	445	400	60
⑤	Note PC	1	1000	700		⑫	Hub	1			
⑥	Printer ( L. B. )	1	1000	700		⑬	Router	1			
⑦	Printer ( I. J. )	1	1100	700		⑭	Modem	1			

コンピュータ室フロアレイアウト (1/100)

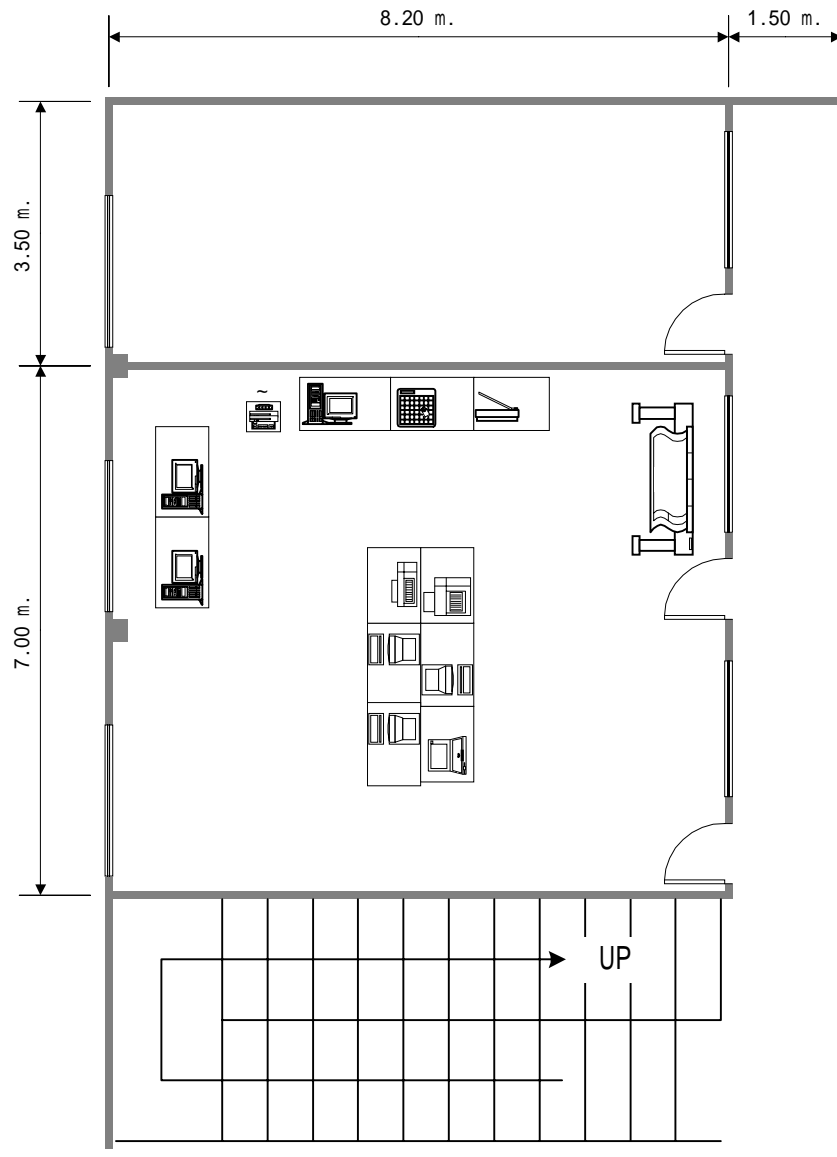
29 . 汕頭市 ( 都市 No . 7 1 )



	Equipment	Unit	W (mm)	D (mm)	H (mm)		Equipment	Unit	W (mm)	D (mm)	H (mm)
①	Main Server	1	1200	700		⑧	Scanner	1	1000	700	
②	Member Server	1	1200	700		⑨	Plotter	1	2000	800	1300
③	GIS Server	1	1200	700		⑩	Digitizer	1	1100	700	
④	Desktop PC	4	1100	700		⑪	Switch	1	445	400	60
⑤	Note PC	1	1000	700		⑫	Hub	1			
⑥	Printer ( L. B. )	1	1000	700		⑬	Router	1			
⑦	Printer ( I. J. )	1	1100	700		⑭	Modem	1			

コンピュータ室フロアレイアウト ( 1/100 )

30 . 珠海市 ( 都市 N 0 . 7 3 )

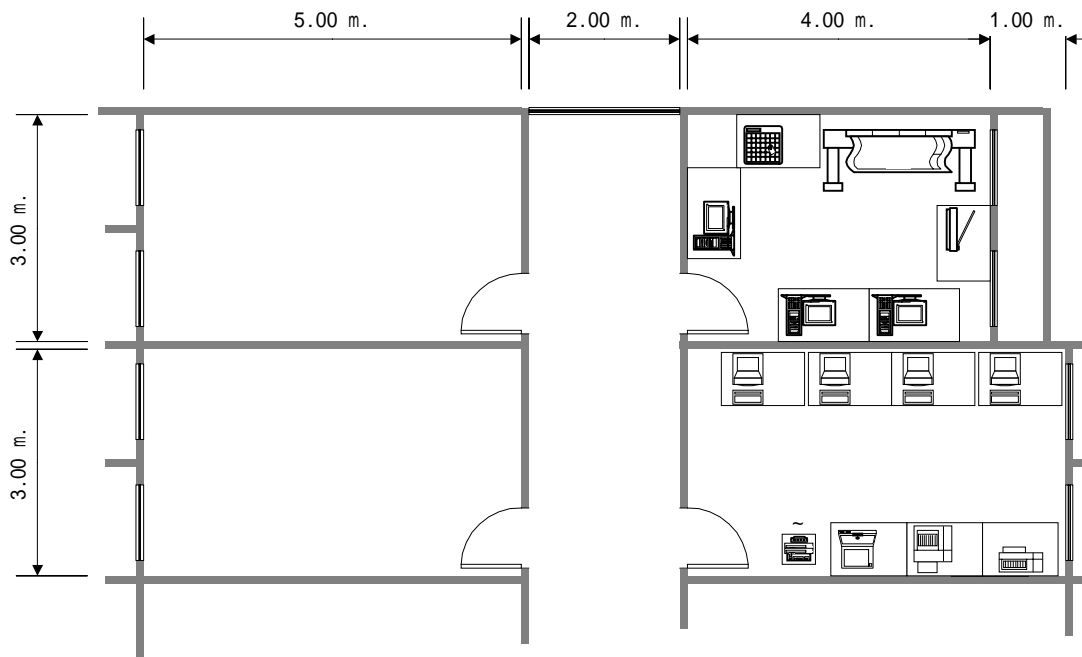


	Equipment	Unit	W (mm)	D (mm)	H (mm)		Equipment	Unit	W (mm)	D (mm)	H (mm)
①	Main Server	1	1200	700		⑧	Scanner	1	1000	700	
②	Member Server	1	1200	700		⑨	Plotter	1	2000	800	1300
③	GIS Server	1	1200	700		⑩	Digitizer	1	1100	700	
④	Desktop PC	3	1100	700		⑪	Switch	1	445	400	60
⑤	Note PC	1	1000	700		⑫	Hub	1			
⑥	Printer ( L. B. )	1	1000	700		⑬	Router	1			
⑦	Printer ( I. J. )	1	1100	700		⑭	Modem	1			

コンピュータ室フロアレイアウト ( 1/100 )



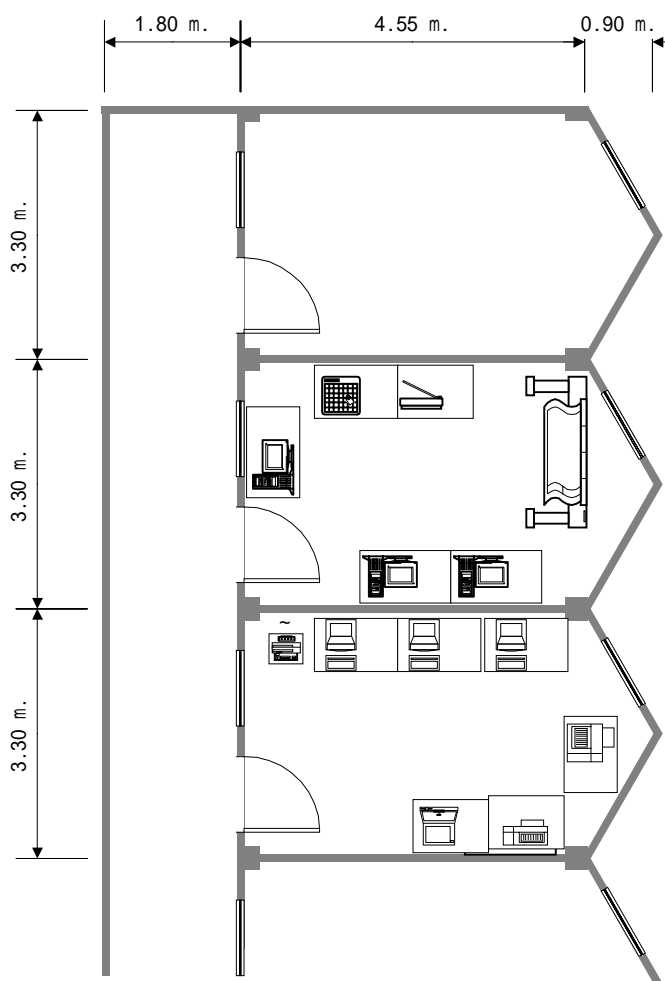
### 3 1 . 南寧市 ( 都市 No . 7 5 )



	Equipment	Unit	W (mm)	D (mm)	H (mm)		Equipment	Unit	W (mm)	D (mm)	H (mm)
①	Main Server	1	1200	700		⑧	Scanner	1	1000	700	
②	Member Server	1	1200	700		⑨	Plotter	1	2000	800	1300
③	GIS Server	1	1200	700		⑩	Digitizer	1	1100	700	
④	Desktop PC	4	1100	700		⑪	Switch	1	445	400	60
⑤	Note PC	1	1000	700		⑫	Hub	1			
⑥	Printer ( L. B. )	1	1000	700		⑬	Router	1			
⑦	Printer ( I. J. )	1	1100	700		⑭	Modem	1			

コンピュータ室フロアレイアウト (1/100)

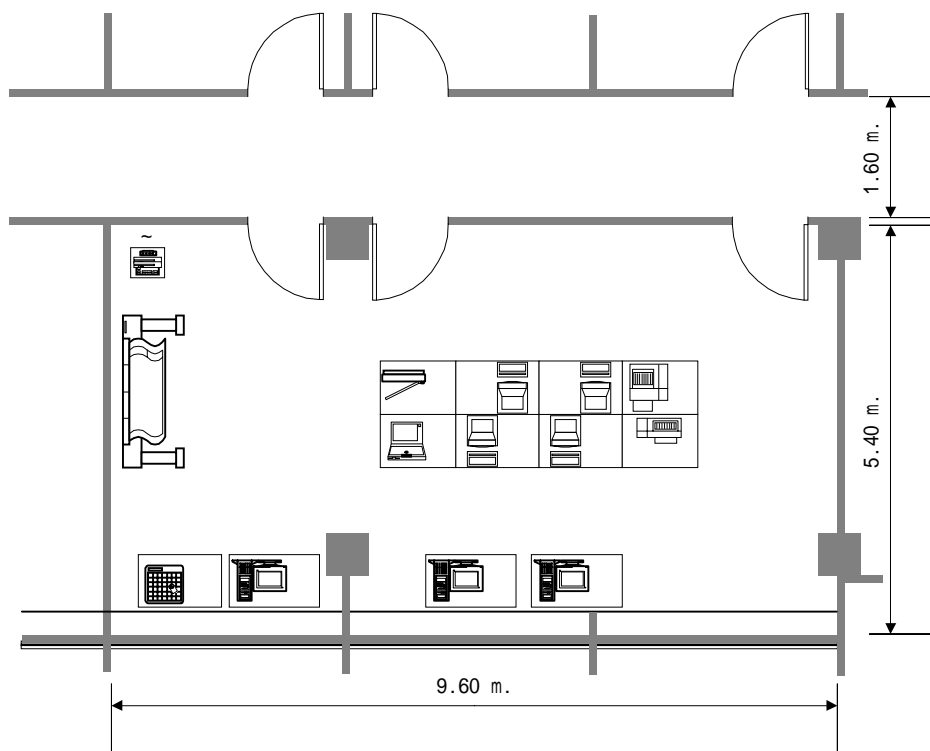
32. 三垂市 (都市No. 78)



	Equipment	Unit	W (mm)	D (mm)	H (mm)		Equipment	Unit	W (mm)	D (mm)	H (mm)
①	Main Server	1	1200	700		⑧	Scanner	1	1000	700	
②	Member Server	1	1200	700		⑨	Plotter	1	2000	800	1300
③	GIS Server	1	1200	700		⑩	Digitizer	1	1100	700	
④	Desktop PC	3	1100	700		⑪	Switch	1	445	400	60
⑤	Note PC	1	1000	700		⑫	Hub	1			
⑥	Printer (L. B.)	1	1000	700		⑬	Router	1			
⑦	Printer (I. J.)	1	1100	700		⑭	Modem	1			

コンピュータ室フロアレイアウト (1/100)

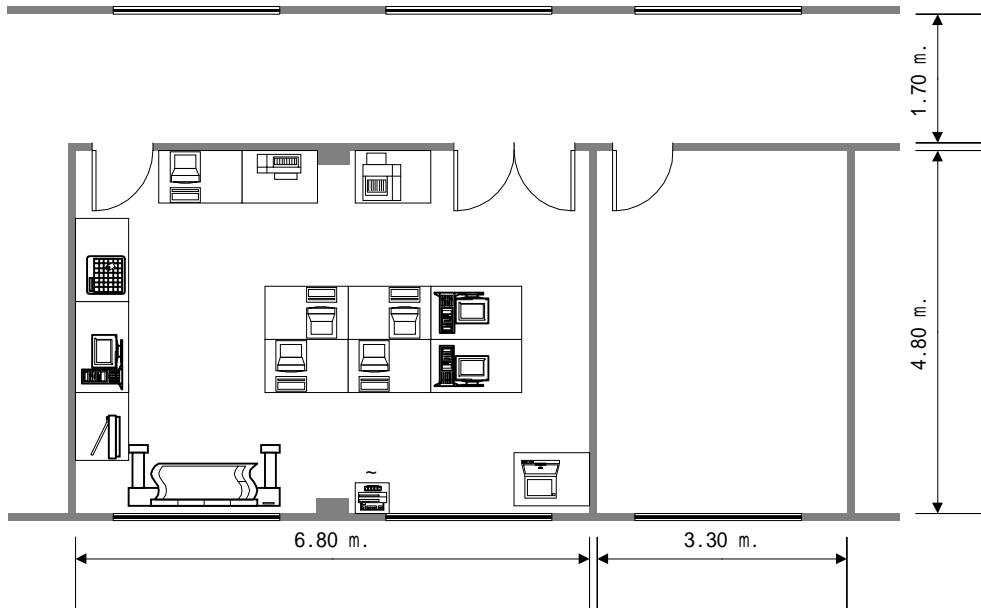
33 . 成都市 ( 都市 No . 79 )



	Equipment	Unit	W (mm)	D (mm)	H (mm)		Equipment	Unit	W (mm)	D (mm)	H (mm)
①	Main Server	1	1200	700		⑧	Scanner	1	1000	700	
②	Member Server	1	1200	700		⑨	Plotter	1	2000	800	1300
③	GIS Server	1	1200	700		⑩	Digitizer	1	1100	700	
④	Desktop PC	4	1100	700		⑪	Switch	1	445	400	60
⑤	Note PC	1	1000	700		⑫	Hub	1			
⑥	Printer ( L. B. )	1	1000	700		⑬	Router	1			
⑦	Printer ( I. J. )	1	1100	700		⑭	Modem	1			

コンピュータ室フロアレイアウト (1/100)

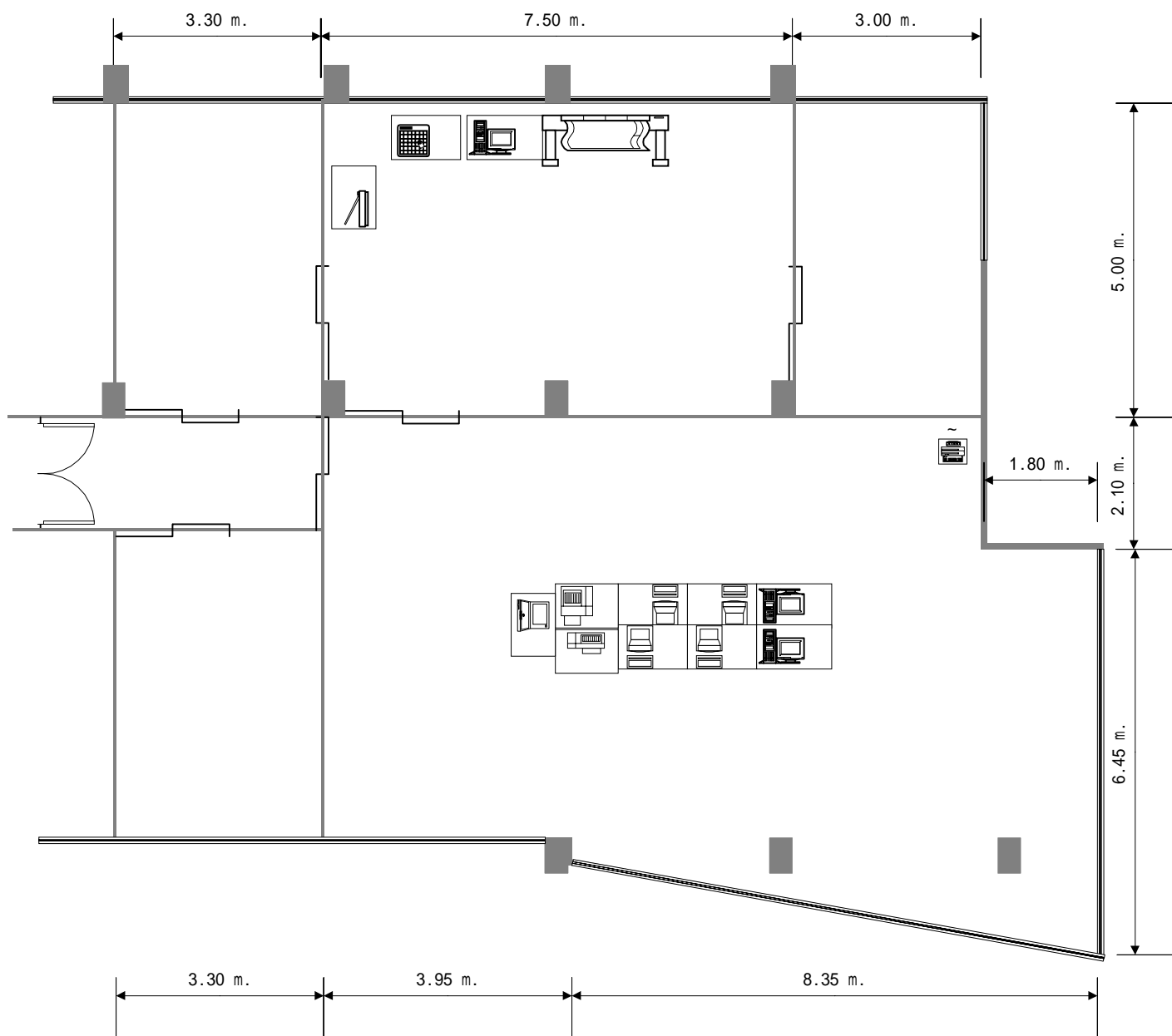
### 34. 貴陽市（都市No. 82）



	Equipment	Unit	W (mm)	D (mm)	H (mm)		Equipment	Unit	W (mm)	D (mm)	H (mm)
①	Main Server	1	1200	700		⑧	Scanner	1	1000	700	
②	Member Server	1	1200	700		⑨	Plotter	1	2000	800	1300
③	GIS Server	1	1200	700		⑩	Digitizer	1	1100	700	
④	Desktop PC	5	1100	700		⑪	Switch	1	445	400	60
⑤	Note PC	1	1000	700		⑫	Hub	1			
⑥	Printer (L. B.)	1	1000	700		⑬	Router	1			
⑦	Printer (I. J.)	1	1100	700		⑭	Modem	1			

コンピュータ室フロアレイアウト (1/100)

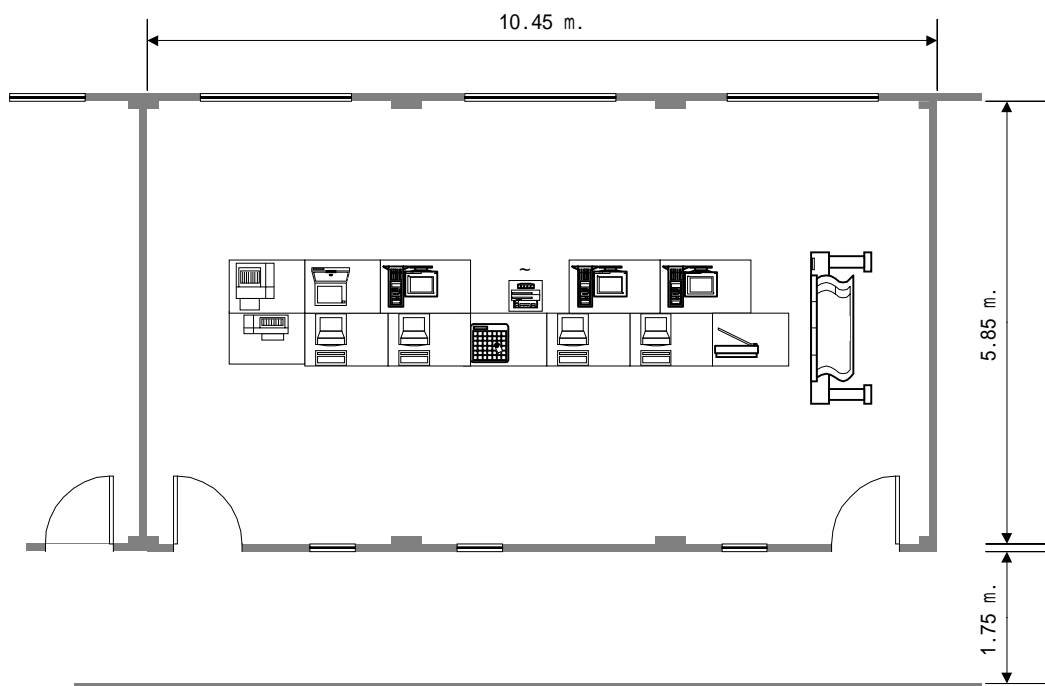
### 35 . 昆明市 (都市No . 84)



	Equipment	Unit	W (mm)	D (mm)	H (mm)		Equipment	Unit	W (mm)	D (mm)	H (mm)
①	Main Server	1	1200	700		⑧	Scanner	1	1000	700	
②	Member Server	1	1200	700		⑨	Plotter	1	2000	800	1300
③	GIS Server	1	1200	700		⑩	Digitizer	1	1100	700	
④	Desktop PC	4	1100	700		⑪	Switch	1	445	400	60
⑤	Note PC	1	1000	700		⑫	Hub	1			
⑥	Printer ( L. B. )	1	1000	700		⑬	Router	1			
⑦	Printer ( I. J. )	1	1100	700		⑭	Modem	1			

コンピュータ室フロアレイアウト (1/100)

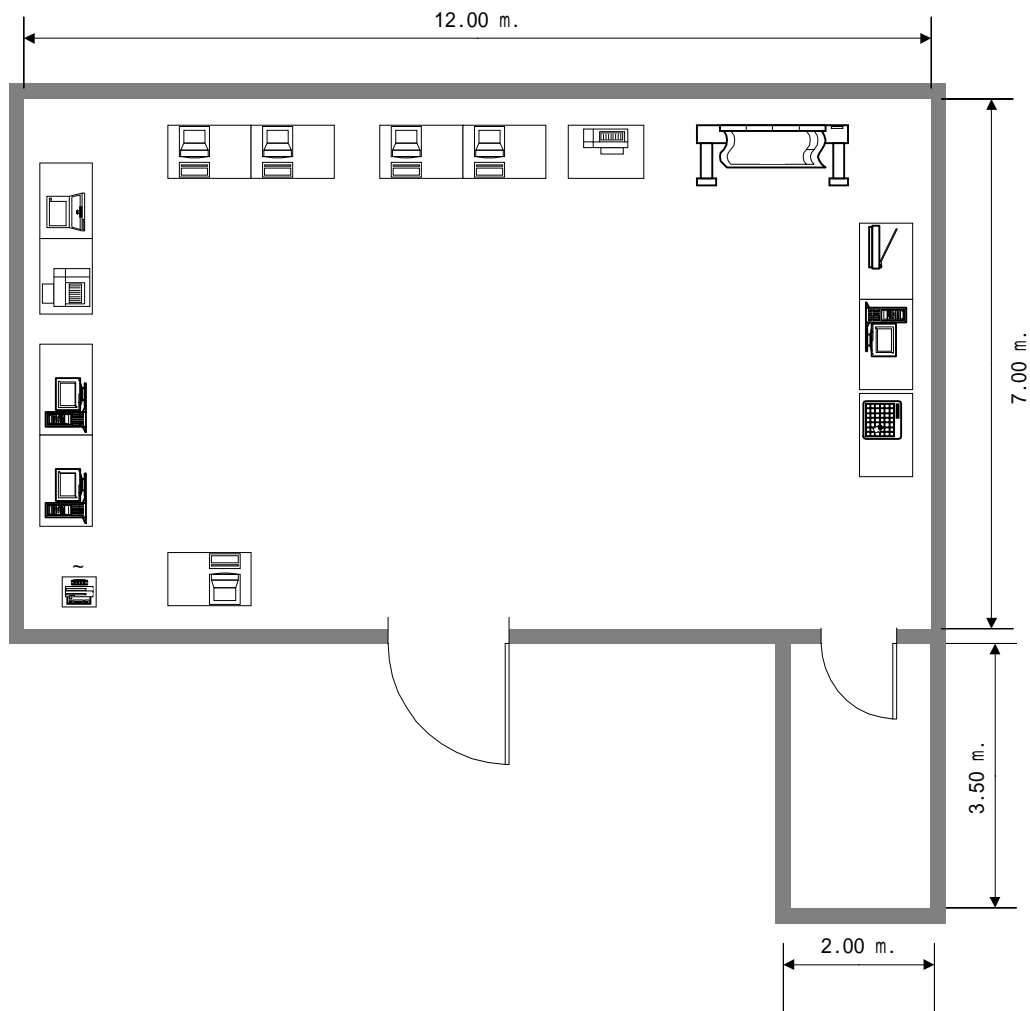
36 . 西安市 ( 都市 No . 88 )



	Equipment	Unit	W (mm)	D (mm)	H (mm)		Equipment	Unit	W (mm)	D (mm)	H (mm)
①	Main Server	1	1200	700		⑧	Scanner	1	1000	700	
②	Member Server	1	1200	700		⑨	Plotter	1	2000	800	1300
③	GIS Server	1	1200	700		⑩	Digitizer	1	1100	700	
④	Desktop PC	4	1100	700		⑪	Switch	1	445	400	60
⑤	Note PC	1	1000	700		⑫	Hub	1			
⑥	Printer ( L. B. )	1	1000	700		⑬	Router	1			
⑦	Printer ( I. J. )	1	1100	700		⑭	Modem	1			

コンピュータ室フロアレイアウト (1/100)

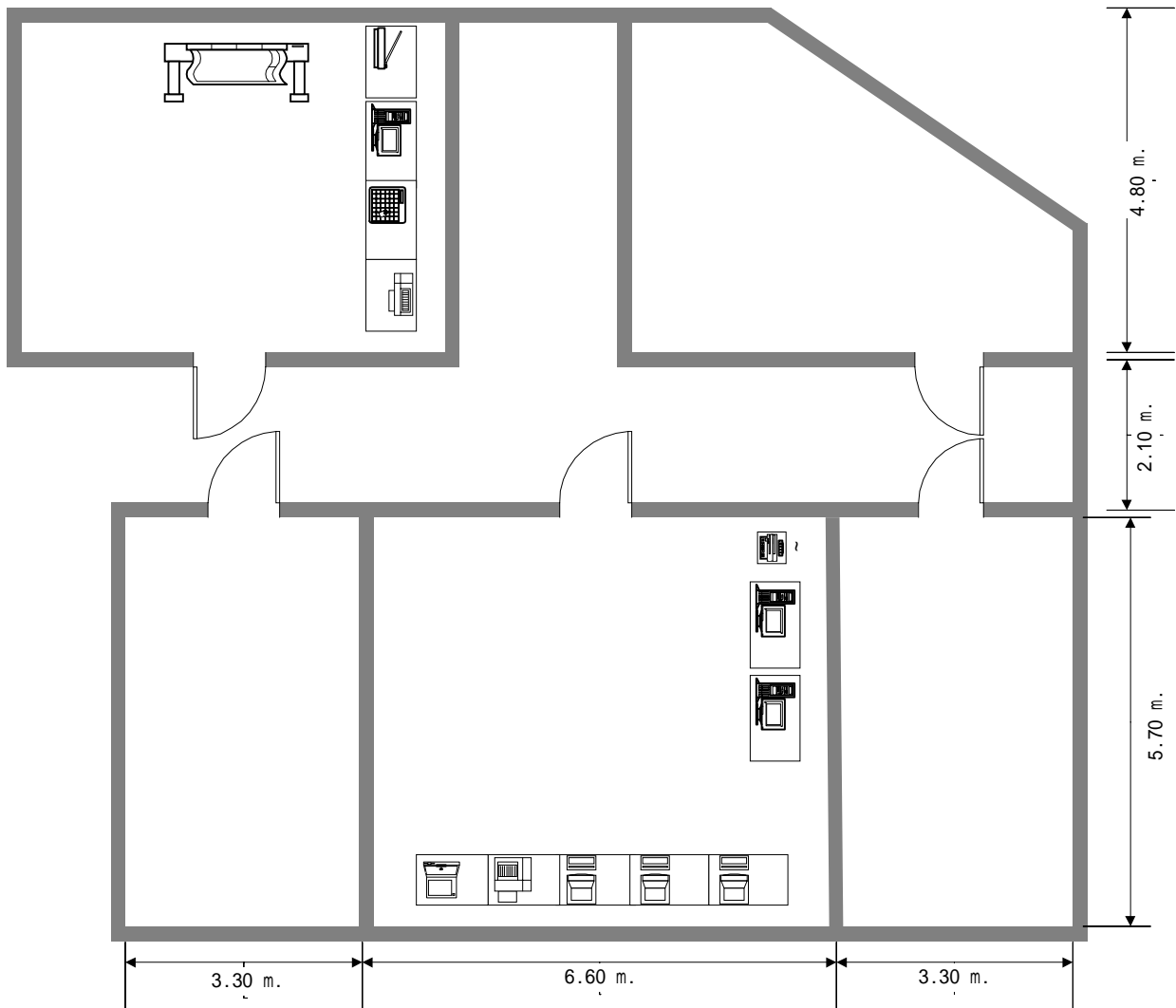
37. 蘭州市 (都市No. 92)



	Equipment	Unit	W (mm)	D (mm)	H (mm)		Equipment	Unit	W (mm)	D (mm)	H (mm)
①	Main Server	1	1200	700		⑧	Scanner	1	1000	700	
②	Member Server	1	1200	700		⑨	Plotter	1	2000	800	1300
③	GIS Server	1	1200	700		⑩	Digitizer	1	1100	700	
④	Desktop PC	5	1100	700		⑪	Switch	1	445	400	60
⑤	Note PC	1	1000	700		⑫	Hub	1			
⑥	Printer ( L. B. )	1	1000	700		⑬	Router	1			
⑦	Printer ( I. J. )	1	1100	700		⑭	Modem	1			

コンピュータ室フロアレイアウト (1/100)

38 . 西寧市 ( 都市 No . 95 )

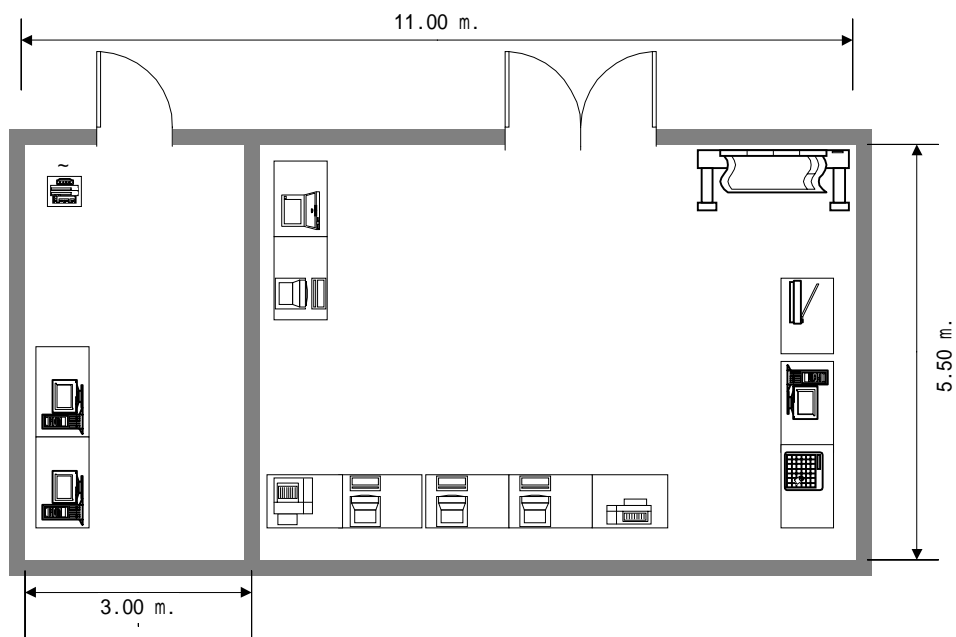


	Equipment	Unit	W (mm)	D (mm)	H (mm)		Equipment	Unit	W (mm)	D (mm)	H (mm)
①	Main Server	1	1200	700		⑧	Scanner	1	1000	700	
②	Member Server	1	1200	700		⑨	Plotter	1	2000	800	1300
③	GIS Server	1	1200	700		⑩	Digitizer	1	1100	700	
④	Desktop PC	3	1100	700		⑪	Switch	1	445	400	60
⑤	Note PC	1	1000	700		⑫	Hub	1			
⑥	Printer ( L. B. )	1	1000	700		⑬	Router	1			
⑦	Printer ( I. J. )	1	1100	700		⑭	Modem	1			

コンピュータ室フロアレイアウト (1/100)



39 . 銀川市 ( 都市No . 97 )



	Equipment	Unit	W (mm)	D (mm)	H (mm)		Equipment	Unit	W (mm)	D (mm)	H (mm)
①	Main Server	1	1200	700		⑧	Scanner	1	1000	700	
②	Member Server	1	1200	700		⑨	Plotter	1	2000	800	1300
③	GIS Server	1	1200	700		⑩	Digitizer	1	1100	700	
④	Desktop PC	4	1100	700		⑪	Switch	1	445	400	60
⑤	Note PC	1	1000	700		⑫	Hub	1			
⑥	Printer ( L. B. )	1	1000	700		⑬	Router	1			
⑦	Printer ( I. J. )	1	1100	700		⑭	Modem	1			

コンピュータ室フロアレイアウト (1/100)

## 資料7 参考資料リスト

## 収集資料リスト

1. 中国環境保護法規全書（1997～1999）
2. 中国環境年鑑（1998）
3. 日英中環境科学辞典
4. 調査対象都市の地図
5. 調査対象都市の環境監視站における環境調査のフォーマット
6. 上記のフォーマットによる調査結果
7. 調査対象都市の環境保護局による環境情報ネットワークに係る計画書