

Table 5.5.41 (A) - Community relations (Ques. 111)

DS division	Have relations	Have marriage relations	Have employment relations	Came from same areas	No relations
Wattala	41	7	0	0	7
Mahara	28	0	0	0	7
Biyagama	81	3	0	0	12
Kaduwela	58	0	0	0	31
Homagama	47	1	0	1	6
Maharagama	31	2	1	0	11
Bandaragama	4	2	1	1	5
Panadura	31	5	0	0	4
Total	321	20	2	2	83
Total Trace	1252	78	8	8	324

Table 5.5.41 (B) Organization Relations- (Ques. 111)

DS division	Delh Donation	Rural Dev.	Sanasa	Samurधि	Sports	Youth Societies	Temple Societies	Co-Op Societies	Samgi Praja Fo.	Lions Club	Sarvo-daya
Wattala	21	1	1	10	4	0	1	2	0		
Mahara	10	0	2	3	0	1	0	0	0		
Biyagama	56	2	11	20	2	2	0	0	0		
Kaduwela	42	2	16	10	1	0	0	0	1		
Homagama	33	1	18	12	0	0	0	0			
Maharagama	15	2	9	13	2	1	0	0		1	
Bandaragama	0	0	2	0	0	0	0	0			1
Panadura	13	0	0	8	2	0	0	0			
Total	190	8	59	76	11	4	1	2	1	1	1
Total Trace	741	31	230	296	43	16	4	8	4	4	4

Table 5.5.42 Number of relative families(Ques. 112)

DS division	Non	Less 5 families	5-10 families	More than 10 families	NA	Total
Wattala	4	11	14	17	2	48
Mahara	3	8	4	18	2	35
Biyagama	12	17	26	40	2	97
Kaduwela	36	18	14	26	5	99
Homagama	6	21	12	16	1	56
Maharagama	11	12	9	13	1	46
Bandaragama	6	3	1	2	0	12
Panadura	2	20	6	11	0	39
Total	80	110	86	143	13	432
Total Trace	312	429	335	558	51	1685

Table 5.5.43- Employment ties with the area (Ques. 113)

DS division	Area it self	vicinity	Nearby town	Colombo	Out side	Foreign	NA
Wattala	13	5	9	8	2		16
Mahara	7	3	3	6	2		18
Biyagama	35	16	13	16	8	1	15
Kaduwela	17	12	14	26	5		31
Homagama	15	7	1	8	2		24
Maharagama	10	4	3	3	1		27
Bandaragama	3	2	1	0	0		7
Panadura	12	3	2	4	0		20
Total	112	52	46	71	20	1	158
Total Trace	437	203	179	277	78	4	616

Table 5.5.44 (A) Nature of business (Ques-114)

DS Division	Petty business	Whole sale	Large scale	Daily retail	Small industry	Large industry	Self employment	N/A	Total
Wattala	2	0		1	0	0	2	43	48
Mahara	5	0		0	1	1	2	26	35
Biyagama	10	0		1	3	0	3	79	96
Kaduwela	8	0		1	4	0	8	78	99
Homagama	6	0	1	0	2	1	2	45	57
Maharagama	6	0	1	0	2	0	7	30	46
Bandaragama	0	0		0	1	0	0	11	12
Panadura	4	0		0	0	0	3	32	39
Total	41	0	2	3	13	2	27	344	432
Total Trace	160	0	8	12	51	8	105	1342	1685

Table 5.5.44 (A)- Reason for Changing living place (Ques. 114B)

DS Division	1	2	3	4	5	6	7	8	9	10	11	12	13	14	15	16	17	18	19	20	N/A
Wattala	0	1	1	0	0	0	0	0	1	3	1	1	0	0	0	0	0				40
Mahara	1	3	2	0	1	1	1	0	0	0	0	0	0	0	8	0					28
Biyagama	1	4	3	2	0	0	1	1	1	0	0	0	0	0	0	0					85
Kaduwela	1	11	5	0	0	0	1	0	5	2	0	0	3	0	3	1	1	1			62
Homagama	0	3	2	4	1	0	3	0	2	0	0	0	2	1	1	1			1		37
Maharagama	0	1	3	0	0	0	2	0	2	1	0	0	4	0	2	0				1	30
Bandaragama	0	0	22	0	0	0	0	0	1	3	0	0	1	0	0	0					6
Panadura	0	1	1	1	0	0	1	0	0	0	0	0	1	0	0	0					35
Total	3	24	39	7	2	1	9	1	12	9	1	1	11	1	14	2	1	1	1	1	323
Total Trace	12	94	152	27	7.8	3.9	35	3.9	47	35	3.9	3.9	43	3.9	55	7.8	3.9	3.9	3.9	3.9	1260

- | | |
|---------------------------------------|------------------------------------|
| 01. Due to education of Children | 11. Living in traditional land |
| 02. For Employment | 12. Living from birth |
| 03. More facilities | 13. Lived in rented in house |
| 04. Evacuation from the residence | 14. Insufficient land |
| 05. Due to good people | 15. Free environment |
| 06. Due to sale of land | 16. Lands in Colombo are expensive |
| 07. Purchase a land for build a house | 17. Low cost of living in the area |
| 08. Mother sickness | 18. Due to family problems |
| 09. Marriage | 19. Lived in Railway quarters |
| 10. Non-availability of land | 20. To look after land |

Table 5.5.45 Communities with whom keep business relations are maintained (Ques. 115)

DS division	Village it self	With village in the vicinity	With frequent visitors	With travelers	With travelers	NA
Wattala	7	0	1	0		42
Mahara	8	3	2	0		26
Biyagama	9	6	3	0		83
Kaduwela	13	2	7	1	1	80
Homagama	4	3	5	3		45
Maharagama	5	4	8	5	1	31
Bandaragama	1	1	0	0		11
Panadura	7	2	2	0		32
Total	54	21	28	9	2	350
Total Trace	211	82	109	35	8	1365

Table 5.5.46- Religious relations (Ques. 116)

DS division	In the near by place	Place in the vicinity	Place far	NA
Wattala	40	5	0	4
Mahara	29	5	2	0
Biyagama	94	2	1	0
Kaduwela	91	3	5	1
Homagama	53	0	1	2
Maharagama	46	1	0	1
Bandaragama	12	0	0	0
Panadura	38	1	0	0
Total	403	17	9	8
Total Trace	1572	66	35	31

Table 5.5.47- Education relations (Ques. 117)

DS Division	Schools in the affected area	School in the village	Schools in the vicinity	Schools in the towns	NA	Total
Wattala	4	8	2	9	26	49
Mahara	3	4	4	13	11	35
Biyagama	1	24	17	23	37	102
Kaduwela	1	15	4	39	41	100
Homagama	0	10	4	13	30	57
Maharagama	1	6	2	24	13	46
Bandaragama	0	0	4	2	6	12
Panadura	0	8	9	6	16	39
Total	10	75	46	129	180	440
Total Trace	39	293	179	503	702	1716

Table 5.5.48(A)- Services Available (Ques. 118)

Ds Division	Domestic water					
	Avalibility			Satisfaction		
	Yes	No	NA	Yes	No	NA
Wattala	45	2	1	26	22	0
Mahara	31	4	0	27	8	0
Biyagama	92	5	0	66	31	0
Kaduwela	95	1	3	63	33	3
Homagama	52	3	1	44	11	1
Maharagama	44	2	0	41	5	0
Bandaragama	10	2	0	7	5	0
Panadura	32	7	0	24	15	0
Total	401	26	5	298	130	4
Total Trace	1564	101	20	1162	507	16

Table 5.5.48(B)- Services Available (Ques. 118)

Ds Division	Transport					
	Availibility			Satisfaction		
	Yes	No	NA	Yes	No	NA
Wattala	46	2		36	12	
Mahara	31	4		30	5	1
Biyagama	96	1		74	23	1
Kaduwela	85	13	1	53	45	
Homagama	50	5	1	15	40	
Maharagama	43	3		33	13	
Bandaragama	11	1		5	7	
Panadura	30	9		25	14	
Total	392	38	2	271	159	2
Total Trace	1529	148	8	1057	620	8

Table 5.5.48(C)- Services Available (Ques. 118)

Ds Division	Access road					
	Availibility			Satisfaction		
	Yes	No	NA	Yes	No	NA
Wattala	48	0	0	43	5	0
Mahara	35	0	0	29	6	0
Biyagama	96	0	0	78	19	0
Kaduwela	95	1	1	59	38	2
Homagama	54	3	1	24	31	1
Maharagama	44	1	1	34	11	1
Bandaragama	12	1	0	6	6	0
Panadura	39	0	0	29	10	0
Total	423	6	3	302	126	4
Total Trace	1650	23	12	1178	491	16

Table 5.5.48(D)- Services Available (Ques. 118)

Ds Division	Education					
	Availability			Satisfaction		
	Yes	No	NA	Yes	No	NA
Wattala	36		12	33	3	12
Mahara	33		2	34	0	1
Biyagama	89		8	83	6	8
Kaduwela	80	1	17	58	24	17
Homagama	43	1	12	33	11	12
Maharagama	43	1	2	32	12	2
Bandaragama	9		3	5	4	3
Panadura	35		4	32	3	4
Total	368	3	60	310	63	59
Total Trace	1435	12	234	1209	246	230

Table 5.5.48(E)- Services Available (Ques. 118)

Ds Division	Health					
	Availability			Satisfaction		
	Yes	No	NA	Yes	No	NA
Wattala	48			46	2	0
Mahara	35			35	0	1
Biyagama	97			84	13	1
Kaduwela	96	2	1	77	21	0
Homagama	54	1	1	48	7	0
Maharagama	44	2		41	5	0
Bandaragama	11	1		9	3	0
Panadura	39			35	4	0
Total	424	6	2	375	55	2
Total Trace	1654	23	8	1463	215	8

Table 5.5.48(F)- Services Available (Ques. 118)

Ds Division	Hospitals					
	Availability			Satisfaction		
	Yes	No	NA	Yes	No	NA
Wattala	48			48	0	
Mahara	35			35	0	
Biyagama	97			76	21	
Kaduwela	93	4	2	74	23	2
Homagama	55	3	1	46	9	1
Maharagama	43	4		40	6	
Bandaragama	8			7	5	
Panadura	39			37	2	
Total	418	11	3	363	66	3
Total Trace	1630	43	12	1416	257	12

Table 5.5.48(G)- Services Available (Ques. 118)

Ds Division	Market					
	Availablility			Satisfaction		
	Yes	No	NA	Yes	No	NA
Wattala	48	0	0	47	1	
Mahara	35	0	0	35	0	
Biyagama	97	0	0	90	7	
Kaduwela	97		2	85	12	2
Homagama	54	1	1	51	4	1
Maharagama	46			44	2	
Bandaragama	8	4		7	5	
Panadura	39			38	1	
Total	424	5	3	397	32	3
Total Trace	1654	20	12	1548	125	12

Table 5.5.48 (H)- Services Available (Ques. 118)

Ds Division	Communication					
	Availablility			Satisfaction		
	Yes	No	NA	Yes	No	NA
Wattala	48			44	4	
Mahara	35			35	0	
Biyagama	97			86	11	
Kaduwela	96	2	1	88	10	1
Homagama	51	2	3	49	4	3
Maharagama	44	1	1	43	2	1
Bandaragama	8	2	2	6	4	2
Panadura	35	0	4	33	2	4
Total	414	7	11	384	37	11
Total Trace	1615	27	43	1498	144	43

Table 5.5.48 (I)- Services Available (Ques. 118)

Ds Division	Religious Activities					
	Availablility			Satisfaction		
	Yes	No	NA	Yes	No	NA
Wattala	48	0		48	0	
Mahara	35			35	0	
Biyagama	97			96	1	
Kaduwela	98		1	92	6	1
Homagama	54		2	54	0	2
Maharagama	45	1		45	1	
Bandaragama	12			10	2	
Panadura	39			38	1	
Total	428	1	3	418	11	3
Total Trace	1669	4	12	1630	43	12

Table 5.5.48 (J) Services Available (Ques. 118)

Ds Division	Freedom					
	Availability			Satisfaction		
	Yes	No	NA	Yes	No	NA
Wattala	48			47	1	
Mahara	35			35	0	
Biyagama	97			95	2	
Kaduwela	98		1	91	7	1
Homagama	53	1	2	53	1	2
Maharagama	45	1		45	1	
Bandaragama	11	1		9	3	
Panadura	39			39	0	
Total	426	3	3	414	15	3
Total Trace	1662	12	12	1615	59	12

Table 5.5.49 (A)- Health Facilities (Ques. 119)

DS Division	Health centers					
	Less than 500m	500m - 1km	1km - 5 km	5 km. - 10 km.	More than 10 km.	NA
Wattala	23	15	3			7
Mahara	9	9	14	2		1
Biyagama	36	16	22	2		21
Kaduwela	13	14	62		1	9
Homagama	16	32	7			1
Maharagama	12	17	15			2
Bandaragama	0	4	8			
Panadura	16	18	2			3
Total	125	125	133	4	1	44
Total Trace	488	488	519	16	4	172

Table 5.5.49(B)- Health Facilities (Ques. 119)

DS Division	Rural hospitals					
	Less than 500m	500m - 1km	1km - 5 km	5 km. - 10 km.	More than 10 km.	NA
Wattala	0	1	2	0	45	0
Mahara	0	0	0	0	35	0
Biyagama	0	0	4	2	91	0
Kaduwela	0	1	2	1	95	0
Homagama	0	1	1	0	54	0
Maharagama	0	0	2	0	44	0
Bandaragama	0	1	0	0	11	0
Panadura	0	1	3	0	35	0
Total	0	5	14	3	410	0
Total Trace	0	20	55	12	1599	0

Table 5.5.49(C)- Health Facilities (Ques. 119)

DS Division	Govt. dispensary					
	Less than 500m	500m -- 1km	1km -- 5 km	5 km. - 10 km.	More than 10 km.	NA
Wattala	5	11	3			29
Mahara	3	6	3			23
Biyagama	0	2	8			87
Kaduwela	7	4	42	1		42
Homagama	11	21	14			10
Maharagama	8	12	16			10
Bandaragama	0	3	7	2		0
Panadura	0	0	18	5		16
Total	34	59	111	8	0	217
Total Trace	133	230	433	31	0	846

Table 5.5.49 (D)- Health Facilities (Quest. 119)

DS Division	Govt. Hospitals					
	Less than 500m	500m -- 1km	1km -- 5 km	5 km. -- 10 km.	More than 10 km.	NA
Wattala		9	33	6	0	0
Mahara		0	20	14	1	0
Biyagama		2	47	40	5	3
Kaduwela		2	47	40	3	7
Homagama	4	6	43	2	0	1
Maharagama		1	41	2	0	2
Bandaragama		1	5	6	0	0
Panadura		0	32	5	0	2
Total	4	21	268	115	9	15
Total Trace	16	82	1045	449	35	59

Table 5.5.49(E)- Health facilities (Ques. 119)

DS Division	Private Medical Centres					
	Less than 500m	500m - 1Km	1Km - 5 Km	5 Km. - 10 Km.	More than 10 Km.	NA
Wattala	15	15	11	6	0	1
Mahara	14	14	7	0	0	0
Biyagama	20	23	46	4	1	3
Kaduwela	21	30	38	2	2	6
Homagama	6	17	31	1		1
Maharagama	10	12	22	0		2
Bandaragama	0	6	2	4		0
Panadura	1	14	18	5		1
Total	87	131	175	22	3	14
Total Trace	339	511	683	86	12	55

Table 5.5.49(F)- Health facilities (Quest. 119)

DS Division	Specialists services					
	Less than 500m	500m - 1Km	1Km - 5 Km	5 Km. - 10 Km.	More than 10 Km.	NA
Wattala	3	16	22	6	0	1
Mahara	4	4	17	9	1	0
Biyagama	6	7	46	27	7	4
Kaduwela	0	0	25	27	41	6
Homagama	0	3	32	14	6	1
Maharagama	0	1	23	9	10	3
Bandaragama	0	1	5	6	0	1
Panadura	0	1	32	5	0	0
Total	13	33	202	103	65	16
Total Trace	51	129	788	402	254	62

Table 5.5.49(G) Institutional Facilities (Quest. 119B) - DS Office

DS Division	Distance(Km)							Transport Media						
	1	2	3	4	5	7	NA	On Foot	On Bicycle	On Motor Cycle	By own vehicle	Taxi	Common	NA
Wattala	1	2	29	9	7	0	0	2	2	2	5	0	37	0
Mahara	0	2	29	4	0	0	0	3	0	1	4	1	26	0
Biyagama	1	12	54	22	7	0	1	2	1	4	6	0	82	2
Kaduwela	0	4	68	19	1	1	6	1	1	6	10	2	73	6
Homagama	0	2	43	8	2	0	1	2	0	2	6	0	45	1
Maharagama	0	0	18	25	2	0	1	0	1	2	6	2	34	1
Bandaragama	0	1	3	5	3	0	0	0	0	0	0	0	12	0
Panadura	0	0	32	5	1	0	1	0	0	0	0	0	37	2
Total	2	23	276	97	23	1	10	10	5	17	37	5	346	12
Total Trace	8	90	1077	378	90	4	39	39	20	66	144	20	1350	47

Table 5.5.49(I-1) Institutional Facilities (Ques. 119B) - Post Office

DS Division	Distance(km)							Transport Media						
	1	2	3	4	5	7	NA	On Foot	On Bicycle	On Motor Cycle	By own vehicle	Taxi	Common	NA
Wattala	18	21	4	4	0	0	1	33	4	2	5	0	4	0
Mahara	9	19	7	0	0	0	0	28	0	0	2	0	5	0
Biyagama	37	28	29	2	0	0	1	53	1	2	3	0	37	2
Kaduwela	14	20	55	5	0	0	5	9	1	5	10	1	67	5
Homagama	4	25	25	1	0	0	1	15	0	2	6	0	32	1
Maharagama	10	18	17	0	0	0	1	12	1	2	3	2	25	1
Bandaragama	0	1	7	4	0	0	0	1	1	0	0	0	10	0
Panadura	6	14	13	5	0	0	1	15	0	1	0	0	22	1
Total	98	146	157	21	0	0	10	166	8	14	29	3	202	10
Total Trace	382	569	612	82	0	0	39	647	31	55	113	12	788	39

Table 5.5.49(I-2) Institutional Facilities (Ques. 119B) - Bank

DS Division	Distance(km)							Transport Media						
	1	2	3	4	5	7	NA	On Foot	On Bicycle	On Motor Cycle	By own vehicle	Taxi	Common	NA
Wattala	15	17	9	7	0	0	0	23	4	2	3	0	16	2
Mahara	8	15	12	0	0	0	0	24	0	0	2	0	9	1
Biyagama	26	24	40	6	0	0	1	36	1	7	3	0	48	1
Kaduwela	7	16	62	9	0	0	5	1	1	6	13	2	71	0
Homagama	2	5	47	1	0	0	1	3	0	2	6	0	44	1
Maharagama	0	7	35	3	0	0	1	1	0	2	6	2	34	0
Bandaragama	0	1	5	6	0	0	0	1	1	0	0	0	10	0
Panadura	0	0	33	5	0	0	1	0	0	1	1	0	36	0
Total	58	85	243	37	0	0	9	89	7	20	34	4	268	5
Total Trace	226	332	948	144	0	0	35	347	27	78	133	16	1045	20

Table 5.5.49 (J) Institutional Facilities (Ques. 119B)-Police Station

DS Division	Distance(km)										Transport Media					
	1	2	3	4	5	6	9	10	NA	On Foot	On Bicycle	On Motor Cycle	By own vehicle	Taxi	Common	NA
Wattala	0	2	36	9	0	0	1	0	0	1	1	2	4	0	40	0
Mahara	8	15	12	0	0	0	0	0	0	24	0	0	2	0	9	0
Biyagama	5	21	54	14	1	0	0	0	2	10	1	5	4	0	74	3
Kaduwela	6	9	32	36	10	0	0	1	0	1	0	4	13	2	74	0
Homagama	0	9	44	2	0	0	0	0	0	4	0	2	6	0	43	0
Maharagama	0	0	29	13	2	1	0	0	0	1	0	1	5	0	37	0
Bandaragama	0	1	5	6	0	0	0	0	0	1	1	0	0	0	10	0
Panadura	0	0	33	5	0	0	0	0	8	0	0	0	1	0	37	9
Total	19	57	245	85	13	1	1	1	10	42	3	14	35	2	324	12
Total Trace	74	222	956	332	51	4	4	4	39	164	12	55	137	8	1264	47

Table 5.5.49 (K) Institutional Facilities (Ques. 119B)-Work Place

DS Division	Distance(km)								Transport Media							
	1	2	3	4	5	6	9	more than 10	NA	On Foot	On Bicycle	On Motor Cycle	By own vehicle	Taxi	Common	NA
Wattala	2	3	2	9	4	1	3	0	24	3	2	1	3	0	12	27
Mahara	3	3	2	3	6	0	0	0	18	6	0	0	3	0	9	17
Biyagama	13	7	24	8	12	2	0	0	31	8	0	4	5	0	47	33
Kaduwela	11	4	9	16	21	0	0	1	37	10	1	5	10	1	37	35
Homagama	5	3	3	2	13	0	0	0	30	8	0	1	5	0	13	29
Maharagama	6	1	4	5	7	0	0	1	22	7	0	1	2	0	15	21
Bandaragama	2	1	1	0	0	0	0	0	8	3	1	0	0	0	0	8
Panadura	1	0	9	2	5	0	0	0	22	1	0	1	1	0	14	22
Total	43	22	54	45	68	3	3	2	192	46	4	13	29	1	147	199
Total Trace	168	86	211	176	265	12	12	8	749	179	16	51	113	4	573	776

Table 5.5.49 (L) Institutional Facilities (119B)-Nearby Town

DS Division	Distance(km)							Transport Media						
	1	2	3	4	5	6	NA	On foot	On Bicycle	On Motor Cycle	By own vehicle	Taxi	Common	NA
Wattala	5	7	29	6	0	1	0	9	2	2	3	0	31	1
Mahara	9	16	10	0	0	0	0	28	0	0	2	0	5	0
Biyagama	5	17	59	11	1	0	4	9	0	5	5	0	72	6
Kaduwela	8	16	62	4	1	0	5	3	0	4	12	2	70	4
Homagama	0	1	49	2	3	0	1	1	0	2	6	0	46	1
Maharagama	0	4	34	5	1	0	2	0	0	2	5	1	36	2
Bandaragama	0	1	5	6	0	0	0	1	1	0	0	0	10	0
Panadura	0	0	33	5	0	0	1	0	0	1	1	0	36	2
Total	27	62	281	39	6	1	13	51	3	16	34	3	306	16
Total Trace	105	242	1096	152	23	4	51	199	12	62	133	12	1194	62

Table 5.5.50 Land size- First land (question 120)

DS Division	More than 5 acres	5-2 acrs	2-1 acres	1-1/2 acres	1/2-1/4 acres	Less 1/4	NA	Total
Wattala	0	0	1	0	0	1	46	48
Mahara	0	1	1	1	1	2	29	35
Biyagama	0	1	1	3	1	1	90	97
Kaduwela	0	0	0	2	4	0	93	99
Homagama	0	0	0	5	3	3	45	56
Maharagama	0	0	4	3	2	2	35	46
Bandaragama	0	0	0	0	0	0	12	12
Panadura	1	0	0	0	1	1	36	39
Total	1	2	7	14	12	10	386	432
Total Trace	4	8	27	55	47	39	1506	1685

Table 5.5.51 Ownership –First land (question 120)

DS Division	freehold	Registered deeds	Permit	Ande	Annual permit	Encroach.	NA	Total
Wattala	2	0	0	0	0	0	46	48
Mahara	4	0	0	0	0	0	31	35
Biyagama	6	0	0	0	0	0	91	97
Kaduwela	5	2	0	1	0	0	91	99
Homagama	10	1	0	0	0	0	45	56
Maharagama	9	0	0	2	0	0	35	46
Bandaragama	0	0	0	0	0	0	12	12
Panadura	3	0	0	0	0	0	36	39
Total	39	3	0	3	0	0	387	432
Total Trace	152	12	0	12	0	0	1509	1685

Table 5.5.52- Land use –First land (question 120)

DS division	Coconut	Rubber	Wetland	Paddy	Vegetable	Other	NA	Total
Wattala	1	0	0	0	0	1	46	48
Mahara	1	0	0	3	0	2	29	35
Biyagama	1	1	0	4	0	0	91	97
Kaduwela	1	0	0	2	1	2	93	99
Homagama	0	0	0	10	1	0	45	56
Maharagama	0	1	0	8	1	0	36	46
Bandaragama	0	0	0	0	0	0	12	12
Panadura	2	0	0	1	0	0	36	39
Total	6	2	0	28	3	5	388	432
Total Trace	23	8	0	109	12	20	1513	1685

Table 5.5.53- Land size- Second land (question 120)

DS Division	More than 5 acres	5-2 acres	2-1 acres	1-1/2 acres	1/2-1/4 acres	Less 1/4	NA	Total
Wattala	0	0	0	0	0	0	0	48
Mahara	0	0	0	0	0	0	0	35
Biyagama	0	0	1	1	1	1	1	93
Kaduwela	0	0	0	0	0	1	0	98
Homagama	0	0	0	1	2	1	1	52
Maharagama	0	0	0	2	0	1	1	43
Bandaragama	0	0	0	0	0	0	0	12
Panadura	0	0	0	0	0	0	2	37
Total	0	0	1	4	4	4	5	418
Total Trace	0	0	4	16	16	20	1630	1685

Table 5.5.54 Ownership –Second land (question 120)

DS Division	Freehold	Registered deeds	Permit	Ande	Annual permit	Encroached	NA	Total
Wattala	0	0	0	0	0	0	0	48
Mahara	1	0	0	0	0	0	0	34
Biyagama	2	0	0	0	0	0	0	95
Kaduwela	1	0	0	0	0	0	0	98
Homagama	3	0	0	1	0	0	0	52
Maharagama	2	0	0	1	0	0	0	43
Bandaragama	0	0	0	0	0	0	0	12
Panadura	2	0	0	0	0	0	0	37
Total	11	0	0	2	0	0	0	419
Total Trace	43	0	0	8	0	0	0	1634

Table 5.5.55 Land use –Second land (question 120)

DS division	Coconut	Rubber	Wetland	Paddy	Vegetable	Other	N/A	Total
Wattala	0	0	0	0	0	0	0	48
Mahara	0	0	0	1	0	0	0	34
Biyagama	1	0	0	1	0	0	4	91
Kaduwela	1	0	0	0	0	0	0	98
Homagama	0	0	0	4	0	0	0	52
Maharagama	1	0	0	0	1	1	1	43
Bandaragama	0	0	0	0	0	0	0	12
Panadura	2	0	0	0	0	0	0	37
Total	5	0	0	6	1	1	5	415
Total Trace	20	0	0	23	4	20	1619	1685

Table 5.5.56 (A) - Total income from lands

(question 122)

DS division	Less 10000	10000- 25000	over 25000	Total
Wattala		1		1
Mahara		1	3	4
Biyagama	1	1	2	4
Kaduwela			1	1
Homagama			3	3
Maharagama			1	1
Total	1	3	10	14

Table 5.5.56 (B) - The Value of land (question 122)

DS division	Less 50000	50000- 100000	100000- 200000	over 200000	Total
Wattala	1			1	2
Mahara			1	4	5
Biyagama		1		2	3
Kaduwela				1	1
Homagama		1		2	3
Maharagama			1		1
Total	1	2	2	10	15

Table 5. 5. .56 (C) Income from lands (question 122)

	Value	Frequency	Percent
	15000	1	0.2
	20000	1	0.2
	25000	2	0.5
	40000	1	0.2
	50000	1	0.2
	80000	1	0.2
	100000	6	1.4
	150000	1	0.2
	166000	1	0.2
	200000	3	0.7
	250000	1	0.2
	280000	1	0.2
	350000	1	0.2
	450000	1	0.2
	800000	1	0.2
	805000	1	0.2
	1000000	2	0.5
	1500000	2	0.5
	1600000	2	0.5
	2500000	1	0.2
	4500000	1	0.2
	12500000	1	0.2
	30000000	1	0.2
	8000	1	0.2
	15000	1	0.2
	28000	1	0.2
	75000	1	0.2
	200000	1	0.2
	300000	2	0.5
	450000	1	0.2
	800000	2	0.5
	2500000	1	0.2
	14000	1	0.2
	45000	1	0.2
	70000	1	0.2
	250000	1	0.2
	800000	1	0.2
Total	62936000	50	10.9

Table 5.5.57- Size of the home garden (question 12.4)

DS division	Land size- 1-5 acres	About 1 acres	20-50 perches	10-20 perches	Less than 10 ac.	50-80 perch.	80-100	NA	Total
Wattala	2	2	14	23	5	2	0	0	48
Mahara	0	2	12	13	6	2	0	0	35
Biyagama	6	4	38	31	8	5	4	1	97
Kaduwela	3	3	19	59	10	4	0	1	99
Homagama	3	2	16	21	10	3	0	1	56
Maharagama	2	2	8	22	3	5	4	0	46
Bandaragama	0	0	4	4	3	1	0	0	12
Panadura	0	1	9	18	7	3	1	0	39
Total	16	16	120	191	52	25	9	3	432
Total Trace	62	62	468	745	203	98	35	12	1685

**Table 5.5.58 : Value of home garden (question 124.1)
Unit (SL Rs./Perch)**

DS division	Less 25000	25000-50000	50000-75000	75000-100000	over 100000	N/A	Grand Total
Wattala	8	22	8	5	1	4	48
Mahara	2	15	3	8	0	7	35
Biyagama	18	53	16	6	0	4	97
Kaduwela	1	61	19	12	1	5	99
Homagama	19	31	1	1	1	3	56
Maharagama	5	26	5	0	4	6	46
Bandaragama	9	2	0	1	0	0	12
Panadura	10	19	2	6	1	1	39
Total	72	229	54	39	8	30	432
Total Trace	311	989	233	168	35	130	1865

Table 5.5.59- Types of house(question 125-1)

DS division	Single storey	Multi storey	NA	Total
Wattala	5	0	43	48
Mahara	7	1	27	35
Biyagama	7	0	90	97
Kaduwela	10	2	87	99
Homagama	8	0	48	56
Maharagama	7	4	35	46
Bandaragama	1	0	11	12
Panadura	2	1	36	39
Total	47	8	377	432
Total Trace	183	31	1470	1685

Table 5.5.60 Number of storeys in multi storey building (Question 125.2)

DS division	Two stories	More than two stories	NA	Total
Wattala	2	0	46	48
Mahara	2	2	31	35
Biyagama	2	0	95	97
Kaduwela	9	1	89	99
Homagama	1	0	55	56
Maharagama	2	0	44	46
Bandaragama	0	0	12	12
Panadura	0	0	39	39
Total	18	3	411	432
Total Trace	70	12	1603	1685

Table 5.5.61 : Floor area of multi storey buildings (question 125-4)

Unit: Square feet

DS division	Less 200	200-500	500-1000	1000-2000	above 2000	Total
Wattala				1	1	2
Mahara		1			3	5
Biyagama					2	2
Kaduwela		1	3	1	5	10
Homagama				1	1	2
Maharagama		1			1	2
Panadura						0
Total	0	3	4	4	12	23

Table 5.5.62 : Floor area of single storey buildings(question 125-4)

Unit: Square feet

DS division	less 200	200-500	500-1000	1000-2000	above 2000	Total	
Wattala			17	22	5	2	46
Mahara			8	10	9	3	30
Biyagama	6		23	32	20	3	84
Kaduwela				5	14	2	21
Homagama	2		6	7	4	2	21
Maharagama	1		4	4	8	1	18
Bandaragama	1					1	2
Panadura	1		4	5		1	11
Total	11		62	85	60	15	233

Table 5.5.63- Type of roofs (question 125-5)

DS Division	Tile	Asbest os	Galvani ze	Other(cadjan)	Concre ate	NA	Total
Wattala	25	16	5	0	0	2	48
Mahara	15	18	1	0	0	1	35
Biyagama	57	30	6	2	0	2	97
Kaduwela	29	55	7	1	2	5	99
Homagama	15	31	2	4	1	3	56
Maharagam a	20	19	3	0	0	4	46
Bandaraga ma	2	4	3	3	0	0	12
Panadura	18	10	8	0	0	3	39
Total	181	183	35	10	3	20	432
Total Trace	706	714	137	39	12	78	1685

Table 5.5.64 - Condition of the house (question- 125-6)

DS division	Comple ted, residing	Comple ted-not residing	Half constru cted but residing	Half constructed but not residing	Under constructing	NA	Total
Wattala	29	0	15	1	0	3	48
Mahara	23	0	9	0	0	3	35
Biyagama	65	0	26	0	0	6	97
Kaduwela	61	0	36	1	0	1	99
Homagama	33	1	17	2	1	2	56
Maharagama	29	0	16	1	0	0	46
Bandaragama	7	0	5	0	0	0	12
Panadura	25	0	11	2	0	1	39
Total	272	1	135	7	1	16	432
Total Trace	1061	4	527	27	4	62	1685

Table 5.5.65 - Value of the house

Unit : SL Rs.

DS division	less 50000	50000-100000	100000-200000	200000-500000	500000-1000000	over1000000	N/A	Total
Wattala	2	9	4	11	11	11		48
Mahara		3	2	5	7	18		35
Biyagama	4	7	14	19	30	22	1	97
Kaduwela	4	3	11	23	31	25	2	99
Homagama	5	5	7	19	15	3	2	56
Maharagama	2	7	5	15	5	12		46
Bandaragama	6		1	3	1	1		12
Panadura	7	3	2	19	6	2		39
Total	30	37	46	114	106	94	5	432
Total Trace	117	144	179	445	413	367	20	1685

Table 5.5.66- Ownership of the houses (question 125-8)

DS division	Owner	Rented in	Relatives' house	Friendship	NA	Total
Wattala	42	3	1	1	1	48
Mahara	33	2	0	0	0	35
Biyagama	90	3	0	1	3	97
Kaduwela	92	4	2	0	1	99
Homagama	53	0	1	0	2	56
Maharagama	44	2	0	0	0	46
Bandaragama	9	3	0	0	0	12
Panadura	35	4	0	0	0	39
Total	398	21	4	2	7	432
Total Trace	1552	82	16	8	27	1685

Table 5.5. 67 Frequency/Percent of houses rented in years (question 125.9)

Years	Frequency	Percent
Less 1	4	0.9
1	9	2.1
2	1	0.2
3	1	0.2
4	2	0.5
7	1	0.2
8	1	0.2
10	2	0.5
12	1	0.2
17	1	0.2
18	1	0.2
N/A	402	93.1
Missing	6	1.4
Total	432	100

Table 5.5.68 (A) - Facilities available in the houses (question 125-10)

DS division	Telephones		Electricity		Pipe water		Well water	
	Yes	No	Yes	No	Yes	No	Yes	No
Wattala	11	37	39	9	2	46	43	3
Mahara	11	24	35	0	4	31	28	7
Biyagama	19	78	79	18	7	89	84	11
Kaduwela	35	62	89	8	24	73	79	16
Homagama	7	47	41	13	3	51	45	8
Maharagama	16	30	38	8	8	38	43	3
Bandaragama	1	11	7	5	0	12	10	2
Panadura	6	28	33	1	11	23	22	12
Total	106	317	361	62	59	363	354	62
Total Trace	413	1236	1408	242	230	1416	1381	242

Table 5.5.68 (B) - Frequencies of Additional houses , Second house

Description	Frequency	Percent
Single	47	10.9
Upstair	8	1.9
N/A	377	87.3
Total	432	100

Table 5.5.68 (C) - Frequencies for Additional houses , Third house

Description	Frequency	Percent
Single	10	2.3
Upstair	4	0.9
N/A	418	96.7
Total	432	100

Table 5.5.69 (A) Impact of Project (question 02)
Community

DS Division	Very Significant No alternative	Very Significant	Significant	Not Significant
Wattala	30	8	5	5
Mahara	22	6	6	1
Biyagama	62	20	7	7
Kaduwela	34	26	25	11
Homagama	17	10	20	6
Maharagama	14	8	11	13
Bandaragama	1	2	8	1
Panadura	11	9	18	
Total	191	89	100	44
Total Trace	745	347	390	172

Table 5.5.69 (B) Impact of Project (question 2)

Education

DS Division	Very Significant No alternative	Very Significant	Significant	Not Significant
Wattala	6	19	9	4
Mahara	7	17	3	3
Biyagama	9	47	13	19
Kaduwela	8	31	22	18
Homagama	4	11	18	11
Maharagama	7	8	7	19
Bandaragama		3	7	1
Panadura	4	7	16	7
Total	45	143	95	82
Total Trace	176	558	371	320

* N/A- Not Answered

Table 5.5.69 (C) Impact of Project (question 2)

Health

DS Division	Very Significant No alternative	Very Significant	Significant	Not Significant
Wattala	6	18	15	9
Mahara	3	14	10	8
Biyagama	2	28	37	28
Kaduwela	4	18	53	18
Homagama	5	4		10
Maharagama	6	5	20	15
Bandaragama			12	
Panadura	6	2	26	3
Total	32	89	207	91
Total Trace	125	347	807	355

Table 5.5.69 (D) Impact of Project (question 2)

Environment

DS Division	Very Significant No alternative	Very Significant	Significant	Not Significant
Wattala	24	19	4	
Mahara	20	12	3	
Biyagama	24	40	28	4
Kaduwela	34	38	21	
Homagama	16	15	20	3
Maharagama	9	10	20	7
Bandaragama		2	10	
Panadura	11	8	18	
Total	138	144	124	14
Total Trace	538	562	484	55

Table 5.5.69 (E) Impact of Project (question 2)

Road System

DS Division	Very Significant No alternative	Very Significant	Significant	Not Significant
Wattala	3	23	19	2
Mahara	4	15	14	2
Biyagama	3	36	52	5
Kaduwela		8	83	2
Homagama		5	41	7
Maharagama	1	5	31	9
Bandaragama			8	4
Panadura		3	32	2
Total	11	95	280	33
Total Trace	43	371	1092	129

Table 5.5.69 (F) Impact of Project (question 2)

Permanent Buildings

DS Division	Very Significant No alternative	Very Significant	Significant	Not Significant
Wattala	20	24	3	
Mahara	19	16		
Biyagama	42	50	3	1
Kaduwela	58	34	1	1
Homagama	20	19	11	3
Maharagama	19	13	5	9
Bandaragama	2	6	4	
Panadura	13	12	11	1
Total	193	174	38	15
Total Trace	753	679	148	59

Table 5.5.69 (G) Impact of Project (question 2)

Markets

DS Division	Very Significant No alternative	Very Significant	Significant	Not Significant
Wattala	1	8	28	9
Mahara	1	5	19	10
Biyagama		1	40	55
Kaduwela	1	7	45	41
Homagama		3	29	21
Maharagama	2	2	21	21
Bandaragama		1	8	3
Panadura	1		25	11
Total	6	27	215	171
Total Trace	23	105	839	667

Table 5.5.69 (H) Impact of Project (question 2)

Religious Places

DS Division	Very Significant No alternative	Very Significant	Significant	Not Significant
Wattala	2	8	25	12
Mahara		5	14	16
Biyagama		14	28	54
Kaduwela	2	16	31	45
Homagama	1	5	25	22
Maharagama	2	5	14	25
Bandaragama	1	2	7	2
Panadura	1	5	14	17
Total	9	60	158	193
Total Trace	35	234	616	753

**Table 5.5.69 (I) Impact of Project (question 2)
Communication**

DS Division	Very Significant No alternative	Very Significant	Significant	Not Significant
Wattala	1	6	26	14
Mahara		3	18	14
Biyagama		3	28	65
Kaduwela	2	1	47	44
Homagama	1	1	22	26
Maharagama	1	7	16	20
Bandaragama			5	4
Panadura		1	11	20
Total	5	22	173	207
Total Trace	20	86	675	807

**Table 5.5.69 (J) Impact of Project (question 2)
Transport**

DS Division	Very Significant No alternative	Very Significant	Significant	Not Significant
Wattala		14	27	6
Mahara	1	6	18	10
Biyagama		19	57	20
Kaduwela		4	78	12
Homagama		2	43	8
Maharagama	1	2	31	12
Bandaragama		1	11	
Panadura			31	6
Total	2	48	296	74
Total Trace	8	187	1155	289

Table 5.5.69 (K) Impact of Project (question 2)

Historical Places

DS Division	Very Significant No alternative	Very Significant	Significant	Not Significant
Wattala		1	9	24
Mahara	1		1	23
Biyagama				75
Kaduwela	2		1	59
Homagama			8	24
Maharagama			5	26
Bandaragama	1		3	3
Panadura	6		19	8
Total	10	1	46	242
Total Trace	39	4	179	944

Table 5.5.69 (L) Impact of Project (question 2)

Land

DS Division	Very Significant No alternative	Very Significant	Significant	Not Significant
Wattala	31	15		
Mahara	23	12		
Biyagama	71	24		1
Kaduwela	63	28		1
Homagama	39	9	1	4
Maharagama	26	12		6
Bandaragama	9	2		
Panadura	30	6		1
Total	292	108	1	13
Total Trace	1139	421	4	51

Table 5.5.69 (M) Impact of Project (question 2)

Homes

DS Division	Very Significant No alternative	Very Significant	Significant	Not Significant
Wattala	31	15		
Mahara	23	11	1	
Biyagama	71	24		1
Kaduwela	63	28		1
Homagama	39	9		5
Maharagama	26	12		6
Bandaragama	10	2		
Panadura	31	6		
Total	294	107	1	13
Total Trace	1147	417	4	51

Table 5.5.70 Impact of Project (Question 3)

Willingness to Accept the Project

DS Division	Yes	No	NA	Total
Wattala	41	7		48
Mahara	28	6	1	35
Biyagama	84	12	1	97
Kaduwela	92	6	1	99
Homagama	53	2	1	56
Maharagama	42	4		46
Bandaragama	12			12
Panadura	38	1		39
Total	390	38	4	432
Total Trace	1521	148	16	1685

Table 5.5.71 Impact of Project (Ques. 301)

Need of the Road

DS Division	Yes	No	NA	Total
Wattala	35	13		48
Mahara	28	6	1	35
Biyagama	82	15		97
Kaduwela	89	10		99
Homagama	52	2	2	56
Maharagama	41	5		46
Bandaragama	12			12
Panadura	38	1		39
Total	377	52	3	432
Total Trace	1470	203	12	1685

Table 5.5.72 (A) Impact of Project (Ques. 302)

Willingness to Leave the Area

DS Division	Yes	No	NA	Total
Wattala	7	41		48
Mahara	9	26		35
Biyagama	20	77		97
Kaduwela	30	67	2	99
Homagama	26	27	3	56
Maharagama	11	31	4	46
Bandaragama	6	5	1	12
Panadura	17	21	1	39
Total	126	295	11	432
Total Trace	491	1151	43	1685

Table 5.5.72 (B) If yes Preferred Site for Resettlement (Ques.303)

DS Division	Within the land	Other location in the area	Out of the area	Any location	Original village	Other Country	N/A	Total
Wattala		4	1	1	1		41	48
Mahara		7	1	1			26	35
Biyagama	3	15	4		1		74	97
Kaduwela	3	19	3	1	2		71	99
Homagama	4	13	2	2	1		34	56
Maharagama	1	8				1	36	46
Bandaragama		7		1			4	12
Panadura	4	12	3				20	39
Total	15	85	14	6	5	1	306	432
Total Trace	59	332	55	23	20	4	1194	1685

**Table 5.5.73 (A)- Nature of Compensation
Expected (ques.4)**

DS div	Money	Land +money	House+ money	Land	House	House+ land	House+ Money +land	N/A
Wattala	14	2	2		2	26	1	1
Mahara	12	7	3			8	2	3
Biyagama	43	9	9		6	23	1	6
Kaduwela	27	18	9	1	11	17		13
Homagama	12	12	7		7	11		7
Maharagama	11	9	4		1	12		8
Bandaragama	2	6			1	2		1
Panadura	5	13	5		2	6		8
Total	127	78	39	1	30	105	4	47
Total Trace	495	304	156	4	117	410	16	183

Table 5.5.73(B) Effect on Other Land or Houses (ques 4.2)

DS Division	Yes	No	NA	Total
Wattala	5	15	28	48
Kadawatha		1	2	3
Mahara	8	9	18	35
Biyagama	12	26	59	97
Kaduwela	10	40	46	96
Homagama	11	21	24	56
Maharagama	14	19	13	46
Bandaragama		6	6	12
Panadura	1	22	16	39
Total	61	159	212	432

Table 5.5.74 : The Socially feasible trace (Question 05)

Name	GN Division	OS Division	Suggestion for shift
Sarath Bandara E.R.	177, Matthumagala	Wattala	300m to Negambo side(Gunesefera mw.)
Neeta Dhamayanthi	177, Matthumagala	Wattala	Bit to Colombo side
Bandula D.G.	177, Matthumagala	Wattala	To Gunesefera Mw.
Anulawathi A.M.	Gai Uduwita	Wattala	Bit to Lakspray Factory
Withanage D.R.D.	Gai Uduwita	Wattala	1500m to Negambo road
Pradeep Saman Kumara W.	Gai Uduwita	Wattala	500m to Colombo side
Indra Kanthi S.K.D.	254A, Thduwegedara	Wattala	300m to left
D. Somawathi Kalugampitiya	254A, Thduwegedara	Wattala	On the pinnamale paddy field
Hrischandra Jayaratne	254A, Thduwegedara	Wattala	On the pinnamale paddy field
Pradeepa Nishanthi	254A, Thduwegedara	Wattala	On the both side paddy field
Puhamugoda U.	254, Heenkenda	Wattala	400m toward Colombo
Sujeewa Prasanna W.G.	254, Heenkenda	Wattala	200m to right
Francis Anthani	254, Heenkenda	Wattala	On the Maharawela paddy field
Antony S.D.J.	254, Heenkenda	Wattala	500m toward Colombo
Barnad A.A.D	254, Heenkenda	Wattala	300m toward Colombo
Perera M.L.S	251, Kuruthalawa	Wattala	Toward Colombo
Sooriya Bandara D.C.	249A, Pahala Karagahamuna, East	Mahara	100 METERS RIGHT FROM PROPOSED ROAD
Ranjith Perera M.A.	249A, Pahala Karagahamuna, East	Mahara	100m to left from Mahabage
Dissanayake K.M.	249A, Pahala Karagahamuna, East	Mahara	Proposed way is suitable
Nalaka Priyadarshana M.A	249A, Pahala Karagahamuna, East	Mahara	50m towards Ragama(Paddy field)
Pushpa Lalani Perera	249A, Pahala Karagahamuna, East	Mahara	15m down (towards Ragama)
Wineetha Ranyaseeli Perera	249A, Pahala Karagahamuna, East	Mahara	10m to Paddy field
Chandrakanthi	249A, Pahala Karagahamuna, East	Mahara	10m to left side -Paddy field
Liyeth Karunarathna	Pahala Karagahamuna, West	Mahara	Shift to left from Wattala
Chamani Padmini	Pahala Karagahamuna, West	Mahara	to left from wattala
Solanga Arachchi D.M.	Pahala Karagahamuna, West	Mahara	Proposed way is applicable
Chandralatha Jayasooriya	Pahala Karagahamuna, West	Mahara	toward Karagahamula paddy field
Nandani Rathnayake	248, Ehala Karagahamuna, South	Mahara	towards left
Perera P.R.M.	248, Ehala Karagahamuna, South	Mahara	10m left
Milton P.W.	248, Ehala Karagahamuna, South	Mahara	Bit shift to left
Nihal Hemantha	248C, Puwakwetiya	Mahara	300m to left from wattala-kadawata
Don Paul	248C, Puwakwetiya	Mahara	shift will damage to other houses
Arunawathi	248C, Puwakwetiya	Mahara	200m to left from Kandy -Kadawatha
Kanthi Wijesinghe	248C, Puwakwetiya	Mahara	250m to left at the bend
Adilin Nona P.	248C, Puwakwetiya	Mahara	to left from wattala to kadawata
Amaradasa P.	Makola South, 271	Biyagama	100m towards Kandy
Premachandra E.K.T.	Makola South	Biyagama	100m towards Kandy
Amarasinghe S.	Makola South	Biyagama	50m to left
Thennakoon F.C.	Makola South	Biyagama	300m away / on paddy field
Lorance Perera H.M.	Ihala Biyanwila (Middle 269B)	Biyagama	10m towards paddy field
Pradeep Mangala P.D.	Ihala Biyanwila (Middle 269B)	Biyagama	to right from wattala to kadawata
Olinona P.	Ihala Biyanwila (Middle 269B)	Biyagama	100m
Priyadarshana W.A.N	Ihala Biyanwila (Middle 269B)	Biyagama	20m toward mawaramandiya
Indika Janakie P.D.	Ihala Biyanwila (Middle 269B)	Biyagama	1000m right to biyanwila
Mendis B.K.	Ihala Biyanwila (Middle 269B)	Biyagama	200m to right on paddy field
Siripata M.A.	Ihala Biyanwila (Middle 269B)	Biyagama	100m to left
Sarath Chandra	Ihala Biyanwila (Middle 269B)	Biyagama	bit right
Sunil Shantha L.A.P.	Mabima East, 270	Biyagama	100m right from wattala to kadawata
Gamage Amith Perera	Helyanthuduwa North	Biyagama	100m left from wattala to kadawatha
Hemawathi D.A.	Helyanthuduwa North	Biyagama	100m right, on paddy field
Rodrigo H.A.W.	Helyanthuduwa North	Biyagama	shift will not reduce the damage
Premasiri Perera L.	Helyanthuduwa North	Biyagama	shift can not reduce the damage
Indrani Hemalatha	275, Helyanthuduwa West	Biyagama	50m to left
Kusumawathi Ranasinghe	275, Helyanthuduwa West	Biyagama	5m to kadawata junction
Bebinona Dias W.	275, Helyanthuduwa West	Biyagama	30m right, on paddy field
Gunaratne M.D.	275, Helyanthuduwa West	Biyagama	50m left, paddy field
Gunaratne H.D.	275, Helyanthuduwa West	Biyagama	100m left
Perera S.A.G.	Biyagama South 280C	Biyagama	100m right
Sopinona Perera D.P.	Biyagama South 280C	Biyagama	100m left from wattala direction
Thomas K.L.H.	Biyagama South 280C	Biyagama	100m left
Ranjith Gamage	275, Helyanthuduwa South	Biyagama	150m left from wattala direction
Dharmasena H.D.	275, Helyanthuduwa South	Biyagama	150m left from wattala direction
Sandaya Kumari	275A, Helyanthuduwa South	Biyagama	1000m left, paddy field
Biyatris Malani K.D.	275A, Helyanthuduwa South	Biyagama	50m left, paddy field
Devid Perera G.	Helyanthuduwa North	Biyagama	10m left paddy field
Weerasekara W.H.	275, Helyanthuduwa South	Biyagama	100m
Dilrukshi Abesinghe	275, Helyanthuduwa South	Biyagama	100m left
Wasantha Dias	275, Helyanthuduwa South	Biyagama	100m left
Aulifer Perera H.	275, Helyanthuduwa South	Biyagama	50m left
Jayasena Pandigama	270, Makola North	Biyagama	300m left
Robert Perera J.A.	270, Makola North	Biyagama	300m left from wattala

Name	GH Division	DS Division	Suggestion for shift
Wineetha Perera P.A.	270, Makola North	Biyagama	290m left, on paddy field
Siril D.P.	270, Makola North	Biyagama	200m left from wattala
Mallika Senaratne	270, Makola North	Biyagama	500m to kadawata
Jinadasa Hewawasam	269, Ihala Blyanwila North	Biyagama	shift to left from wattala
Ajith De Silva	269, Ihala Blyanwila North	Biyagama	left from wattala
Gunawathie S.D.	269, Ihala Blyanwila North	Biyagama	100m left
Thawanti Trileeshiya	269, Ihala Blyanwila North	Biyagama	100m left
Sumana Samarasinghe	269, Ihala Blyanwila North	Biyagama	100m left
Katulanda C.	269, Ihala Blyanwila North	Biyagama	300m left
Ramani Pushpalatha S.T.	269, Ihala Blyanwila North	Biyagama	100m to kandy
Hemali Mangalika S.B.	269, Ihala Blyanwila North	Biyagama	300m left
Prasanna Wettasinghe	269, Ihala Blyanwila North	Biyagama	500m left, paddy field
Jayasena M.	269A, Mawaramandiya	Biyagama	50m kandy
Pushpa Renuka P.	269A, Mawaramandiya	Biyagama	10m to padd field
Anura Kodikara	269A, Mawaramandiya	Biyagama	100m left
Jayasena P.	269A, Mawaramandiya	Biyagama	300m right
Seetha Karpperuma	269A, Mawaramandiya	Biyagama	150m right / 100 left
Pushpalatha M.	269A, Mawaramandiya	Biyagama	right on paddy field
Upul Priyantha M.C.	269A, Mawaramandiya	Biyagama	to annasiwatta
Sindi A.M.	475A, Mahadeniya	Kaduwela	100m north
Sujeewa Malkanthi	475A, Mahadeniya	Kadawatha	20m right to paddy field
Mangala Sarojinie	475A, Mahadeniya	Kadawatha	NO IDEA ABOUT THE AREA
Weerasinghe S.	475A, Mahadeniya	Kadawatha	NO IDEA ABOUT THE AREA
David R.	475A, Mahadeniya	Kaduwela	300 METERS RIGHT
Tamara Perera	475A, Mahadeniya	Kaduwela	PERMANENTLY DAMAGE
Sugathapla S.	475A, Mahadeniya	Kaduwela	PERMANENTLY DAMAGE
Rejina De Silva	489A, Boralugoda	Kaduwela	150 METERS RIGHT
Sandya Kumudunle Perera A.	489A, Boralugoda	Kaduwela	100 FT. RIGHT SIDE
Amarawansa H.M.	489A, Boralugoda	Kaduwela	50 FT. RIGHT SIDE
Newton Perera P.	489A, Boralugoda	Kaduwela	50 FT. RIGHT SIDE
Samsan Wimalasooriya	489A, Boralugoda	Kaduwela	50M. RIGHT SIDE
Marlin M.A.R.	489A, Boralugoda	Kaduwela	30 METERS RIGHT, FROM HOUSE
Sumanawathie A.	489A, Boralugoda	Kaduwela	100 METERS RIGHT TOWARDS THE PADDY FIELD
Kure B.T.	474A, Rthnagahawatte	Kaduwela	25 METERS RIGHT
Asawathie W.	474A, Rthnagahawatte	Kaduwela	50 METERS RIGHT SIDE
Shirani Sujatha	474A, Rthnagahawatte	Kaduwela	50M. TO THE RIGHT SIDE
Yasapala Perera K.	474A, Rthnagahawatte	Kaduwela	150 METERS TO THE RIGHT
Dewasiri Dayananda	474A, Rthnagahawatte	Kaduwela	50M TOWARDS THE PADDY FIELD
Chandrika Malkanthi	474A, Rthnagahawatte	Kaduwela	PERMANENTLY DAMAGE
Botheju W.S.	474A, Rthnagahawatte	Kaduwela	NOT KNOWN
Kusumawathie Katugampala	474A, Rthnagahawatte	Kaduwela	NOT KNOWN
Sirimathie Indrani L.B.	474, Hewagama	Kaduwela	NOT KNOWN THE AREA
Silva S.D.	474, Hewagama	Kaduwela	NOT KNOWN
Ranjane Hemalatha B.	476B, Malabe North	Kaduwela	50M. TO THE LEFT SIDE
Adiris Singhno R.A.C.	476B, Malabe North	Kaduwela	25 METERS TO THE LEFT SIDE
Jeseena Perera B.T.	476B, Malabe North	Kaduwela	50M. TO THE LEFT SIDE, ACROSS THE FIELD
Wijesekara C.	476B, Malabe North	Kaduwela	3 METERS TO THE LEFT SIDE
Perera K.D.	476B, Malabe North	Kaduwela	100 METERS TO THE RIGHT SIDE
Dayabaran S.	476B, Malabe North	Kaduwela	150 METERS TO THE LEFT
Gunathilake L.A.L.	476B, Malabe North	Kaduwela	NO ALTERNATE SUGGESTION
Pathirana G.W.	476B, Malabe North	Kaduwela	100 METERS TO THE RIGHT SIDE ALONG P. FIELD
Henry Kankanamge	476B, Malabe North	Kaduwela	USE THE BARE LAND
Dingirimenika A.G.	476B, Malabe North	Kaduwela	NO ALTERNATE SUGGESTIONS
Nafri N.M.L.	476B, Malabe North	Kaduwela	50 METERS TO THE LEFT SIDE
Pathiravithana L.A.	476B, Malabe North	Kaduwela	50M. LEFT, TOWARDS KADUWELA ROAD
Gamini Rajanayake	476B, Malabe North	Kaduwela	NO DIRECTION
Sarath Kumara R.A.	476B, Malabe North	Kaduwela	ONLY SOLUTION IS AIR WAY
Thirimanne	476B, Malabe North	Kaduwela	PERMANENTLY DAMAGE
Mangalik Ranasinghe	476B, Malabe North	Kaduwela	NO KNOWN
Wijesiri M.A.	476, Malabe East	Kaduwela	50M. TO THE LEFT
Anulawathie Menike P.	476, Malabe East	Kaduwela	ACROSS NILWALA DEPOT TOWARDS P. FIELD
Kusumawathie Dias P.P.	476, Malabe East	Kaduwela	3 METERS TO THE LEFT
Perera J.B.	476, Malabe East	Kaduwela	50 METERS TO THE LEFT OR RIGHT
Kusumawathie B.	476, Malabe East	Kaduwela	NO ALTERNATE SUGGESTION
Manel Perera	476, Malabe East	Kaduwela	NO ALTERNATE SUGGESTIONS
Samaradivakara D.M.P.K.	476, Malabe East	Kaduwela	50 METERS TO THE LEFT SIDE
Tennakoon T.M.P.	476, Malabe East	Kaduwela	MUST PLAN ACROSS THE NEGLECT PADDY LAND
Perera H.G.Y.	476, Malabe East	Kaduwela	500 METERS TO THE LEFT SIDE
Ajith Jayathilake	476, Malabe East	Kaduwela	TOWARDS KAHANTOTA ROAD TO THE LEFT SIDE
Pladasa S.	476, Malabe East	Kaduwela	100 METERS TO THE LEFT SIDE
Sumithra Arachchi D.S.	476, Malabe East	Kaduwela	MUST PLAN THE ROAD TO LEFT FROM WATTALA
Janaratne A.V.	494, Hokandara North	Kaduwela	500 METERS TO THE LEFT SIDE

Name	GN Division	DS Division	Suggestion for shift
Indrani K.A.	491, Hokandara North	Kaduwela	150 METERS TO THE LEFT SIDE
Kusumawathie Perera T.	491, Hokandara North	Kaduwela	500 METERS TO THE LEFT SIDE
Gamini Jayasinghe	491, Hokandara North	Kaduwela	25 METERS TO THE LEFT
Malkanthi H.D.S.	491, Hokandara North	Kaduwela	3 METERS LEFT
Wimalasena Perera T.	491, Hokandara North	Kaduwela	PLANNING ACROSS THE NEGLECT PADDY LAND IS BETTER
Wasantha Senaviratne	491, Hokandara North	Kaduwela	HALF K.M. TOWARDS THE PORE PADDY FIELD
Wasantha Jayasena M.D.	491, Hokandara North	Kaduwela	100 METERS TO THE LEFT SIDE
Nirnal Jayalath M.D.	491, Hokandara North	Kaduwela	100 METERS TO THE LEFT SIDE
B.O.W.M.Ranasinghe Bandara	491, Hokandara North	Kaduwela	200 METERS TO THE LEFT SIDE
Kanthi A.M.	491, Hokandara North	Kaduwela	PERMANENTLY DAMAGES
Premathilake U.H.S.	491, Hokandara North	Kaduwela	500 METERS TO THE LEFT SIDE
Shaya Wijewardhana	491, Hokandara North	Kaduwela	PERMANENTLY DAMAGES
Paranamana	491, Hokandara North	Kaduwela	PERMANENTLY DAMAGES
Wijesinghe S.N.	491A, Hokandara East	Kaduwela	200 METERS TO THE RIGHT SIDE
Jayantha Kandana Arachchi	491A, Hokandara East	Kaduwela	NO ALTERNATE SUGGESTIONS
Mangalika P.M.D.	499, Hiripitiya	Homagama	50 METERS TO THE LEFT
Kularatne P.	590/B, Deepangoda	Homagama	100 METERS TOWARDS THE PADDY FIELD
Ghnawathie P.	590/B, Deepangoda	Homagama	100 METERS TOWARDS THE PADDY FIELD
Chandana Pushpakumara P.	590/B, Deepangoda	Homagama	100 METERS TOWARDS THE PADDY FIELD
Wasantha Udayaratne	600, Undurugoda	Homagama	10 METERS TO THE RIGHT SIDE
Wijitha Perera	600, Undurugoda	Homagama	75 METERS TO THE RIGHT SIDE
Somachandra M.A.	600, Undurugoda	Homagama	50 METERS TO THE LEFT SIDE
Thanoja Nalin Kapugoda	600, Undurugoda	Homagama	10 METERS LEFT
Anusha Nilanthi Pramodari K	500, Braghmanagama	Homagama	100 METERS LEFT
Asela Amarasinghe	500, Braghmanagama	Homagama	TURN LEFT, THE ROAD COMMING FROM WATTALA
Saman Pushpakumara	500, Braghmanagama	Homagama	100 METERS LEFT
Chandralatha Weerathunga	500, Braghmanagama	Homagama	10 METERS LEFT SIDE FROM HOUSE
Podithani M.	500, Braghmanagama	Homagama	10 METERS LEFT
Rohitha H.G.	500, Braghmanagama	Homagama	75 METERS TO THE LEFT, TOWERS PADDY FIELD
Ajith Kumara	500, Braghmanagama	Homagama	50 METERS TOWERS THE PADDY FIELD
Josallinna D.	500, Braghmanagama	Homagama	50 METERS LEFT TOWARDS THE PADDY FIELD
Elis Nona U.	500, Braghmanagama	Homagama	100 METERS LEFT TOWARDS PADDY FIELD
Madduma Banda E.G.	500, Braghmanagama	Homagama	TURN 50 METERS LEFT, THE ROAD COMMING FROM WATTALA
Fernando P.T.	500, Braghmanagama	Homagama	TURN THE ROAD TOWARDS THE PADDY FIELD FROM WATTALA
Asitha Bandara A.W.	500, Braghmanagama	Homagama	50 METERS TO THE LEFT
Ajith Susantha Amarasinghe	500, Braghmanagama	Homagama	50 METERS TO THE LEFT SIDE
Nandanie K.A.D.	500, Braghmanagama	Homagama	TURN TO THE PADDY FIELD
Wijekumara Bandara	500, Braghmanagama	Homagama	TURN 50 METERS TO THE LEFT COMMING FROM WATTALA
Kamani Pradeepa B.A.	500, Braghmanagama	Homagama	25 METERS TO THE LEFT
Leelawathie P.	500, Braghmanagama	Homagama	TURN 50 METERS TO THE LEFT
Ananda Kumarage	500, Braghmanagama	Homagama	TURN THE ROAD TOWARDS PADDY FIELD
Pushpa Renuka	500, Braghmanagama	Homagama	10 METERS TO THE LEFT, TOWARDS PADDY FIELD
Arjyawathie A.	500, Braghmanagama	Homagama	50 METERS TO THE LEFT, TOWARDS PADDY FIELD
Wimalasena	500, Braghmanagama	Homagama	TURN 50 METERS TO LEFT, THE ROAD COMMING WATTALA
Fernando P.D.	500, Braghmanagama	Homagama	75 METERS TO THE LEFT
Renuka Ranawaka	500, Braghmanagama	Homagama	10 METERS TOWARDS THE PADDY FIELD
Indrasena K.K.	500, Braghmanagama	Homagama	50 METERS TO THE LEFT TOWARDS PADDY FIELD
Dayawathie Samarasinghe	500, Braghmanagama	Homagama	50 METERS TOWARDS PADDY FIELD
Nanda Weerakoon	497, Rukmale West	Maharagama	TURN LEFT COMMING FROM WATTALA
Priyangika Kumari	497, Rukmale West	Maharagama	50 METERS TO THE LEFT
Sharli Sudantha	497, Rukmale West	Maharagama	NO ALTERNATE SUGGESTION IN THIS AREA
Ananda Dias	497, Rukmale West	Maharagama	500 METERS TO THE RIGHT COMMING FROM WATTALA
Arandi Hewage	497, Rukmale West	Maharagama	TURN RIGHT COMMING FROM WATTALA
Piyadasa S.A.	497, Rukmale West	Maharagama	50 METERS TO THE LEFT AND PLAN ALONG THE P.FIELD
Chandima Nayani A.	497, Rukmale West	Maharagama	50 METERS TO THE LEFT SIDE
Ranjani M.P.S.	497, Rukmale West	Maharagama	NO DIRECTION, PERMANENTLY DAMAGE
Keerthi Somawathie	497, Rukmale West	Maharagama	50 FT. TO THE RIGHT SIDE TOWARDS THE PADDY FIELD
Somapala R.A.D.	497, Rukmale West	Maharagama	80 FT. TO THE RIGHT FROM NO.154 HOUSE
Sunethra W.D.	497, Rukmale West	Maharagama	50 FT. TO THE RIGHT SIDE TOWARDS PADDY FIELD
Chaminda Manjula	497, Rukmale West	Maharagama	100 METERS AWAY FROM HOUSE, TOWARDS PADDY FIELD
Perera D.P.	497, Rukmale West	Maharagama	30 METERS TO THE LEFT ALONG PADDY FIELD
Asilin Nona M.P.	497, Rukmale West	Maharagama	10 METERS TO THE LEFT ALONG THE PADDY FIELD
Ranyawathie E.	497, Rukmale West	Maharagama	10 METERS TO THE LEFT
Dharmasena R.M.	497, Rukmale West	Maharagama	10 METERS TO THE LEFT
Thamari Kumalika Weerakoon	497, Rukmale West	Maharagama	75 METERS TO THE LEFT
Amarasinghe Matage M.D.	497, Rukmale West	Maharagama	100 METERS TO LEFT OR RIGHT ALONG BARE LAND
Renuka Sooriyanpola	497, Rukmale West	Maharagama	20 METERS LEFT
Elis Nona Subaweera	497, Rukmale West	Maharagama	20 METERS LEFT
Podinona N.B.A.	496A, Kottawa East	Maharagama	200 METERS TO THE RIGHT COMMING FROM WATTALA
Sunil Wickramathilake	496A, Kottawa East	Maharagama	200 METERS TO THE RIGHT COMMING FROM WATTALA
Nirosha Shanthi	496A, Kottawa East	Maharagama	500 METERS TO THE LEFT
Nihal Perera M.	498A, Makumbura North	Maharagama	100 METERS TO THE LEFT

Name	GN Division	DS Division	Suggestion for shift
Mahinda Galagedara	498A, Makumbura North	Maharagama	50 METERS TO THE LEFT
Ariyaratne Peris M.	498A, Makumbura North	Maharagama	100 METERS TO THE LEFT SIDE COMMING FROM WATTALA
Priyanath Abesinghe	498A, Makumbura North	Maharagama	50 METER TOWARDS
Chandradasa M.D.	498A, Makumbura North	Maharagama	10 METERS TOWARDS THE PADDY FIELD FROM NEW BUILDING
Lionel Karunasiri P.	498A, Makumbura North	Maharagama	50 METERS TO THE LEFT
Siriyalatha H.K.	690A, Madupitiya	Bandaragama	30 METERS TO THE LEFT SIDE PADDY FIELD
Chandrasena H.R.	690A, Madupitiya	Bandaragama	30 METERS TO THE LEFT SIDE PADDY FIELD
Nandanl Fonseka	690A, Madupitiya	Bandaragama	35 METERS TO THE LEFT SIDE TOWARDS PADDY FIELD
Priyawathie A.	690A, Madupitiya	Bandaragama	25 METERS TO THE LEFT SIDE TOWARDS PADDY FIELD
Wijaya Jayananda	690A, Madupitiya	Bandaragama	20 METERS LEFT SIDE ALONG THE NEGLECT PADDY FIELD
Nandanle H.	690A, Madupitiya	Bandaragama	30 METERS TO THE LEFT SIDE FROM PROPOSED ROAD
Perera W.R.M.	690A, Madupitiya	Panadura	30 METERS LEFT
Leen Silva	696A, Naranpitiya	Panadura	NOT KNOWN
Jayawathie Silva	696A, Naranpitiya	Panadura	50 METERS TO THE LEFT
Dayawathie D.	696A, Naranpitiya	Panadura	NOT KNOWN
Jayasena D.	696, Pinwatte	Panadura	50 METERS TO THE LEFT
Silva M.H.D.	696, Pinwatte	Panadura	DIFFICULT TO SUGGEST
Sriyani perera L.	696, Pinwatte	Panadura	DIFFICULT TO SUGGEST
Silva G.T.V.	696, Pinwatte	Panadura	50 METERS TO THE LEFT
Shayama Chandante	696, Pinwatte	Panadura	15 METERS TO THE LEFT
Soyza Wijesinghe P.A.	696, Pinwatte	Panadura	NO ANY ALTERNATE PLACE IN THIS AREA
Soma Gunasekara	696, Pinwatte	Panadura	15 METERS TO THE LEFT
Jenet de Silva	696, Pinwatte	Panadura	100 METERS TO THE LEFT
Gallin P.	696, Pinwatte	Panadura	50 METERS TO THE LEFT
Wijesinghe K.T.D.A.	696, Pinwatte	Panadura	PERMANENTLY DAMAGE
Cunawardhana K.	696B, Pinwatte West	Panadura	PERMANENTLY DAMAGE

Table 5.5.75 – Suggestions for Mitigation (ques. 6)

DS Division	Suggestion 1*	Suggestion 2	Suggestion 3	Suggestion 4	Suggestion 5	Suggestion 6	Suggestion 7	Suggestion 8	No Suggestions
Wattala	13	4	1	1	1				
Mahara			19	5		1	1	2	
Biyagama		1	16	9		1	19	1	
Kaduwela		4	6	4	1	1	6	4	
Homagama							5	6	
Maharagama			1		1			2	
Bandaragama									
Panadura	2			1				6	
Total	15	9	43	20	3	3	31	21	1

- Suggestion 1 Construct using Government or Common Land
- Suggestion 2 Reduce the width of the Proposed Road
- Suggestion 3 Widening the available roads
- Suggestion 4 Widening the road and connect the Kandy Road
- Suggestion 5 Take road through paddy lands from Mahabage to Kiribathgoda
- Suggestion 6 Over Head bridge
- Suggestion 7 Use paddy field, Grounds as much as possible
- Suggestion 8 Change the direction of road

Table 5.5.76 – Details of Available Land for Relocation (ques 7)

DS Division	Available	Not available	Dont know	No answer	Total
Wattala	9	38		1	48
Mahara	7	20	3	5	35
Biyagama	22	62	7	6	97
Kaduwela	33	46	19	1	99
Homagama	28	24	4		56
Maharagama	23	16	5	2	46
Bandaragama	5	6	1		12
Panadura	8	29	1	1	39
Total	135	241	40	16	432
Total Trace	527	940	156	62	1685

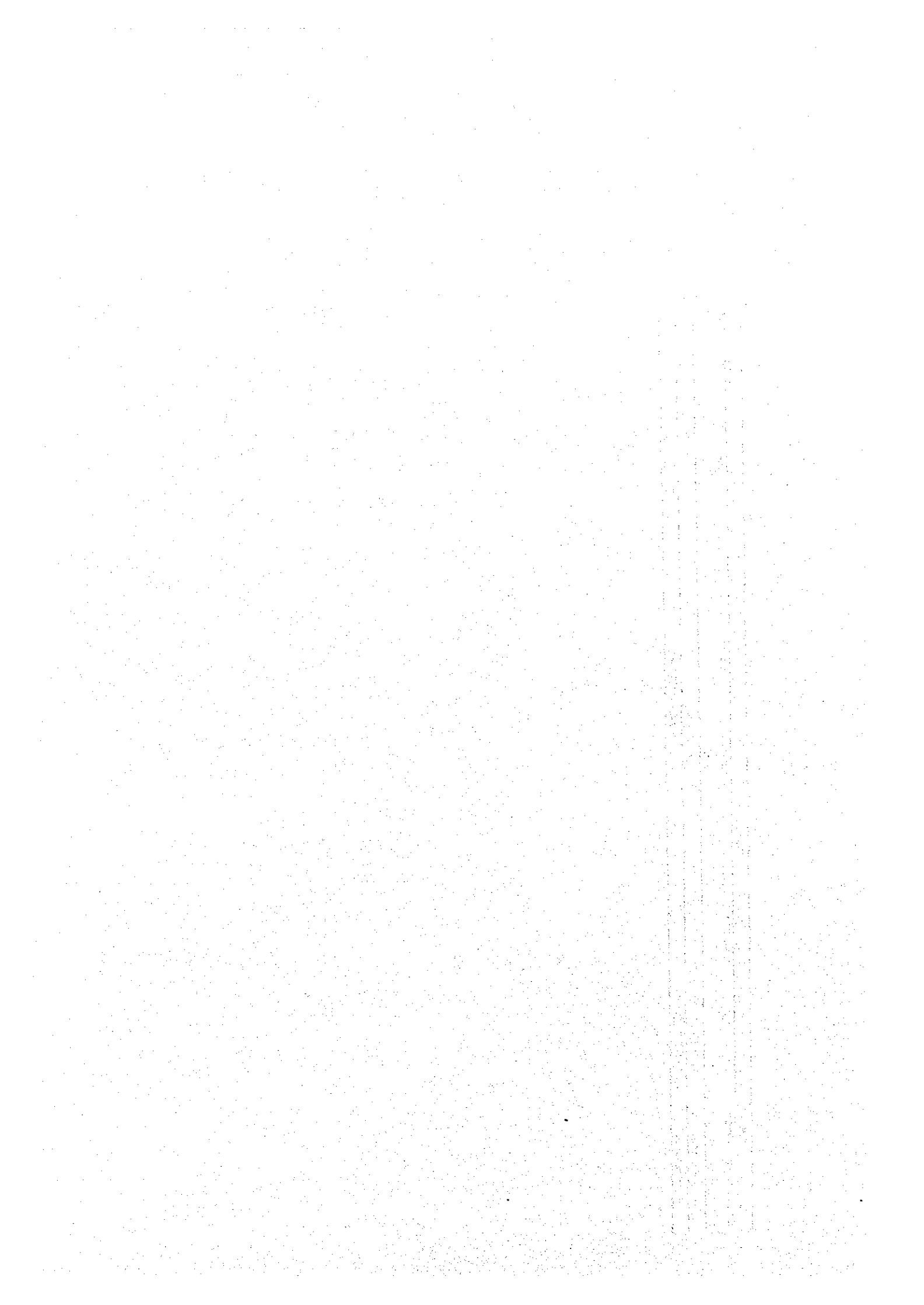
Table 5.5.77. Land Availability for re-location(Q.7.1)

Q. Number	DS Division	First Land		Second Land	
		Location	Extent Ac.	Location	Extent Ac.
38	Wattala	LAND IN GUNASEKARA MAWATHA	400.00	Government	
39	Wattala	LAND IN GUNASEKARA MAWATHA	60.00	Government	
47	Wattala	TOWARDS TO MAIN ROAD IN HENDALA JUNCTION	4.00	Private	
66	Wattala	MILLAGAHAWATTE	8.00	Private	
68	Wattala	MILLAGAHAWATTE	15.00	Private	
69	Wattala	MILLAGAHAWATTE	15.00	Private	
75	Wattala	MILLAGAHAWATTE	8.00	Private	
27	Mahara	TRANSPORT BOARD LAND	3.00	Government	8.00
2	Mahara	KARAGAHAMUNA POLHENA WATTE	8.00	Private	
4	Mahara	KARAGAHAMUNA POLHENA WATTE	8.00	Private	
7	Mahara	KARAGAHAMUNA POLHENA WATTE	10.00	Private	20.00
8	Mahara	KARAGAHAMUNA POLHENA WATTE	20.00	Private	
86	Biyagama	KML TO MAKOLA	40.00	Government	20.00
112	Biyagama	NAYAGALA JUNCTION	8.00	TUDER GUNSEKERA	0.00
119	Biyagama	KUREGE WATTA	65.00	R L SPIITEEL	65.00
87	Biyagama	SOME PLACES IN THE AREA	10.00	Private	0.00
106	Biyagama	IHALA BIYANWILA	15.00	Private	0.00
111	Biyagama	HEYANTUDUWA AREA	60.00	TUDER GUNSEKERA	0.00
113	Biyagama	KUREGE HENA	65.00	SPIITEL WATT	0.00
118	Biyagama	NAGALA JUNCTION	10.00	TUDER GUNASEKERA	65.00
120	Biyagama	BATUGE WATTA	65.00	R L SPETEL	0.00
123	Biyagama	CLOSE TO PROPOSED ROAD	10.00	Private	0.00
124	Biyagama	LEFT TO PROPOSED ROAD	10.00	Private	0.00
138	Biyagama	IN THE VILLAGE	15.00	CHANDRAPALA	0.00
139	Biyagama	CLOSE TO PROPOSED ROAD	15.00	CHANDRAPALA	0.00
140	Biyagama	CLOSE TO ROAD	6.00	CHANDRAPALA	0.00
145	Biyagama	MAKOLA NORTH AT 656 HOUSE	10.00	Private	0.00
146	Biyagama	CLOSE TO WELLMURE ROAD	3.00	Private	0.00
147	Biyagama	SUMANAPALA'S LAND	40.00	K P SUMANAPALA	0.00
149	Biyagama	1.5KM TOWARED KADAWATA	10.00	Private	0.00
150	Biyagama	1.5KM AT KADAWATA ROAD	15.00	Private	0.00
151	Biyagama	BATUGE WATTA	20.00	Private	0.00
164	Biyagama	AT KADAWATHA BANK	4.00	MR. VICTOR	15.00
169	Biyagama	1KM TOWARED KADAWATHA	15.00	SIRISENA MUDALI	0.00
171	Biyagama	IHALA BIYANWILA	8.00	Private	0.00
172	Biyagama	IHALA BIYANWILA WIJE Mw.	20.00	Private	0.00
175	Biyagama	MAWARAMANDIYA	10.00	Private	0.00
180	Biyagama	WIJEYA MW.	10.00	KARTELIS SINGGNO	0.00
238	Kaduwela	ANNASIWATTE	0.00	Government	0.00
207	Kaduwela	NEAR VIHARA MAWATHA	10.00	ARIYARATHNE K.G.N	0.00
224	Kaduwela	WELIVITA	65.00	Government	0.00
225	Kaduwela	PINE APPLE LAND	60.00	Government	0.00
226	Kaduwela	WELIVITA	90.00	Government	0.00
228	Kaduwela	PINE APPLE LAND, WELIVITA	80.00	Government	0.00

Q. Number	DS Division	First Land		Ownership		Location	Second land	
		Location	Extent Ac.	Ownership	Extent Ac.		Location	Extent Ac.
266	Kaduvela	DHARMASOKA MAWATHA	11.00	Government				
201	Kaduvela	CLOSE TO PORE, PADDY FILED	20.00	Private		IN BORALUGODA		0.00
211	Kaduvela	DISAWATTE, KADAWATHA	6.00	Private				0.00
212	Kaduvela	DISAWATTE, KADAWATHA	6.00	Private				0.00
213	Kaduvela	DISAWATTE, KADUWELA	5.00	Private				0.00
214	Kaduvela	DISAWATTE, KADUWELA	6.00	Private				0.00
217	Kaduvela	PALIHENA WATTE	2.00	Private				0.00
229	Kaduvela	WELIVITA	5.00	Private				0.00
234	Kaduvela	NEAR BY LAND	1.00	MR. AMEEN, BORELLA				0.00
241	Kaduvela	WELIVITA	15.00	THAMBIGE WATTE		NEAR WELIVITA JUNCTION		75.00
242	Kaduvela	WELIVITA JUNCTION	70.00	MR. ARUNACHALAM		THAMBIGE WATTE		15.00
244	Kaduvela	IN I. JOTHIPALA MAWATHA	1.50	MR. DHARMADASA				0.00
246	Kaduvela	KAHANTOTA ROAD	3.00	Private				0.00
248	Kaduvela	JOTHIPALA MAWATHA	5.00	MR. I. RANATHUNGA		KAHANTOTA ROAD		4.00
252	Kaduvela	MALAMBE	3.50	MR. I. RANATHUNGA		KAHANTOTA ROAD		5.00
253	Kaduvela	IN MALAMBE	5.00	JOTHIPALA MUDALALI				0.00
256	Kaduvela	WELIVITA JUNCTION	65.00	ANNASIWATTE		MIRISHENA		1.00
258	Kaduvela	KOSHENA ROAD	3.50	MR. PREMARATNE				0.00
270	Kaduvela	RIGHT SIDE LAND, PROPOSED ROAD	2.00	Private				
277	Kaduvela	KAHANTOTA, HOKANDARA NORTH	150.00	PIADASA MUDALALI				
279	Kaduvela	NEAR RUKMALGAMA TERRACE LAND	3.00	Private				
198	Kaduvela	TOWARDS KAHANTOTA	500.00	Unknown				0.00
204	Kaduvela	CLOSE TO HOKANDARA PORE P/F	5.00	Unknown				0.00
272	Kaduvela	NELUM PLACE	6.00	Unknown				
274	Kaduvela	KAHANTOTA, HOKANDARA NORTH	2.00	Unknown				
284	Homagama	MAGAMMANA	10.00	Government		DIYAGAMA		99.00
285	Homagama	DIYAGAMA	25.00	Government				
286	Homagama	DIYAGAMA	25.00	Government				
287	Homagama	DIYAGAMA	25.00	Government				
288	Homagama	DIYAGAMA WATTE	150.00	Government				
299	Homagama	DIYAGAMA BROADCASTING COR. WAT	90.00	Government				
304	Homagama	DIYAGAMA	10.00	Government				
319	Homagama	DIYAGAMA BROADCASTING COR. LAND	60.00	Government				
324	Homagama	DIYAGAMA BROADCASTING COR. LAND	60.00	Government				
328	Homagama	HENEGODAWATTE	25.00	Government				
282	Homagama	HIRIPITIYA	2.00	DONT KNOW				
294	Homagama	WETHARA	25.00	SAMAN WENIWELPOLA				
296	Homagama	IN THE AREA	25.00	MR. SAMAN				
297	Homagama	SANDAGIRIWATTE	5.00	ABEAIYA				
298	Homagama	SANDAGIRIWATTE	2.00	MR. SAMAN				
299	Homagama	SANDAGIRIWATTE, UNDURUGODA	1.00	MR. RUPASINGHE				
317	Homagama	KOSWETHYANA ROAD	2.00	MR. R. YASAPALA				
320	Homagama	MAGAMMANA	3.00	OWNER DONT KNOW				

Q. Number	DS Division	First Land		Ownership		Second Land Extent Ac.
		Location	Extent Ac.	Location	Extent Ac.	
323	Homagama	BRAGHMANAYAGAMA	2.00	MR. SUSIL MUNASINGHE		
325	Homagama	BRAGHMANAYAGAMA	2.00	DONT KNOW		
331	Homagama	BRAGHMANAYAGAMA	2.00	MR. SUSIL MUNASINGHE		
332	Homagama	BRAGHMANAYAGAMA	15.00	Private		
333	Homagama	BRAGHMANAYAGAMA	2.00	Private		
281	Homagama	HENEGODA RUBBER LAND	10.00	Unknown	HIRIPITIYA RUBBER LAND	10.00
292	Homagama	POLGASOVITA	7.00	Unknown		
311	Homagama	RUBBER LAND, BRAGHMANAGAMA	5.00	Unknown		
322	Homagama	PISKALWATTA	10.00	Unknown		
295	Homagama	IN THE AREA	25.00	Unknown		
344	Maharagama	HORAHENA ROAD	40.00	MR. PIYADASA		
345	Maharagama	RUKMALE EAST	5.00	PUNCHI MAHATTAYA		
347	Maharagama	HORAHEN ROAD	40.00	MR. PIYADASA		
349	Maharagama	HORAHENA WATTA	30.00	MR. J.I.P. PIYADASA		
352	Maharagama	KADUDENIYA WATTE	3.00	MR. SIRISENA		
353	Maharagama	MALAMBE RUBBER LAND	5.00	MALAMBE MAHATTAYA		
354	Maharagama	DABARE LAND	2.00	MR. DABARE		
355	Maharagama	MALAMBE RUBBER LABD	3.00	MALAMBE MAHATTAYA		
357	Maharagama	NUGEMULLA	5.00	Private		
358	Maharagama	PUNCHIMAHATTAYA LAND	4.00	PUCHIMAHATTAYA		
360	Maharagama	RUKMALE	5.00	PUNCHIMAHATTAYA		
365	Maharagama	NEW CITY LAND	2.00	MR. PIYADASA		
370	Maharagama	CLOSE TO HOMAGAMA HOSPITAL	5.00	MR. SRILAL DHARMASE		
376	Maharagama	HIRIPITIYA	2.00	Private		
377	Maharagama	MAKUMBURAILGAHA KUMBURA	1.50	ME. HAMACHANDRA		
338	Maharagama	IN THE AREA	7.00	Unknown		
342	Maharagama	RUKMALE SCHOOL LANE	6.00	Unknown		
343	Maharagama	RUKMALE SCHOOL LANE	6.00	Unknown		
350	Maharagama	SCHOOL LANE	10.00	Unknown		
351	Maharagama	NUGEMULLA	5.00	Unknown		
366	Maharagama	NALDIHAWA	5.00	Unknown		
367	Maharagama	IN GN DIVISION	0.00	Unknown		
369	Maharagama	HORAHENA ROAD	7.00	Unknown		
393	Bandaragama	URANGODA	60.00	PRADESHIYA SABHA		
394	Bandaragama	URANGODAWATTE	60.00	Private		
395	Bandaragama	IN THE AREA	4.00	MR. SUGATHAPALA		
396	Bandaragama	URANGODAWATTE	60.00	MR. FERNANDO		
387	Bandaragama	HORAHENA ROAD	2.00	Unknown		
383	Panadura	SINDAWATTE	1.50	SUMATHIPALA		
403	Panadura	NALLURUWA DIKBEDDA	10.00	Private		
407	Panadura	NARANPITIYA	0.50	MR. ARIYA		
413	Panadura	PINNAWATTA VILLAGE	5.00	MR. KUVINTOR		
415	Panadura	PINWATTA VILLAGE	5.00	MR. KUVINTOR		

C. Number	DS Division	First Land			Second Land	
		Location	Extent Ac.	Ownership	Location	Extent Ac.
416	Panadura	NALLURUWA, PINWATTA	50.00	Private		
421	Panadura	NARAMPITIYA	6.50	MAHAGEDARA		



QUESTIONNAIRE USED IN SOCIAL SURVEYS

PROPOSED OUTER CIRCULAR ROAD -1999
IDENTIFICATION OF SOCIAL IMPACTS
(THE INFORMATION WILL BE TREATED CONFIDENTIAL)

1. General Information

101. Name of the respondent :

102 Address :

103 Employment :

1. Government employee
2. Private sector
3. Business
4. Farmer
5. Self employment
6. Other (specify)

104. Grama Niladhari (GN) division:

105. Divisional secretary division:

106 Religion:

1. Buddhslum
2. Catholic
3. Islamic
4. Hindu

107. Nationality

1. Sinhala
2. Tamil
3. Muslim
4. Burger

108 Family Structure

Age groups	Female	Male	Education	In school	School completed	employment	Female	Male
0-5			1-5 Year			Govt.		
6-18			6-10 year			Private		
19-35			O/L			Farming		
36-55			A/L			Daily labor		
more 55			University			Business		
			Professiona			trade(petty)		
			l			Self Employment		
			Infant			Foreign		
			Elderly			employment		
						Retired		

109 Monthly income ;Rs. per month:

1. less 2500
2. 2500-5000
3. 5000-7500
4. 7500-10,000
5. 10,000-15,000
6. 15,000-25,000
7. more than 25,000

110. History of residence/ business place

1. By decent
 2. More than 50 years
 3. 50-20 years
 4. 20-10 years
 5. less than 10 years
- 9=NA

111. Relations with the community

1. Have realigns
 2. Through marriages
 3. Have similar professional friends
 4. Came from same original villages
 5. Friendship only
- 9=NA

112. The number of relatives live in the community

1. Non
2. less than 5 families
3. 5-10 families
4. more than 10 families 9=NA

113. Employment relations

1. in the area it self
2. In the vicinity
3. Nearest town
4. Colombo
5. Out side the area 9=NA

114. If a business man the nature of business

1. Petty business
2. whole sale business
3. Large scale business
4. Daily trading
5. Small industry (cottage industry)
6. Large scale industry
7. Self employment

115. The community with whom keeps business relations

1. Village it self
2. Adjoining villages
3. Visitors to the area
4. Travelers

116. Religious relations

1. Area it self
2. vicinity
3. Far way places

117. Schools in which your children study

1. Area comes under the trace
2. village schools Just out side of the trace
3. Vicinity
4. nearest towns

118. The facilities enjoyed in the area.

facility	availability- Yes /No	Satisfied-Y/N
1. water		
2. Transport		
3. Access		
4. education		
5. Health		
6. Hospital		
7. Marketing		
8. Communication		
9. religious		
10 Freedom (peaceful environment)		

119. Health facilities

Facility	Distance
1. Health centers	Less than 500 M
2. Rural hospital	500 M- 1 KM
3. Govt. dispensary	1 KM- 5 KM
4. Govt. Hospital	5 KM- 10 KM
5. Private	More than 10 KM
6. Access to services of specialists	-

120 Details of lands (excluding homesteads)

Plot 1.

size	Ownership	Land use
More 5 acres	Freehold	coconut
5-2 acres	registered permits	Rubber
2-1 acres	permits	Wetland
1- ½	Ande	Paddy
½-1/4	annual permits	Vegetable
Less 1/4	Encroached	other(specify)

Plot 2.

Size	Ownership	Land use
More 5 acres	Freehold	coconut
5-2 acres	registered permits	Rubber
2-1 acres	permits	Wetland
1- ½	Ande	Paddy
½-1/4	annual permits	Vegetable
Less ¼	Encroached	other(specify)

Plot 3

Size	Ownership	Land use
More 5 acres	Freehold	coconut
5-2 acres	registered permits	Rubber
2-1 acres	permits	Wetland
1- ½	Ande	Paddy
½-1/4	annual permits	Vegetable
Less ¼	Encroached	other(specify)

120 Profitability

- plot 1
- Plot 2
- Plot 3

122. Annual income from the lands

- Plot 1 Rs.
- Plot 2 Rs.
- Plot 3 Rs.

123. Current value of the lands

- Plot 1 Rs.
- Plot 2 Rs.
- Plot 3 Rs.

124. Size of the homestead

1. 1-5 acres
2. 1 acre
3. 20 to 50 perches
4. 10 to 20 perches

124.1 Value of the homestead (Rs. per perch)

125. House

125.1 Type of the house

- 1) Single story
- 2) Multi stories

125.2 If multi storied house, number of stories

1. two
2. More than two

125.3 If multi storied house the floor area Sq feet's.....

125.4 If single house Floor rea S1q. feet's.....

125.5 Roof

- 1) Tiles
- 2) Asbestos
- 3) Galvanize
- 4) Cajan

125.6 Current condition of the house

- 1) Completed and residing
- 2) Completed but not residing
- 3) Half completed but residing
- 4) Half compelled but not residing
- 5) Still constructing

125.7 Current value Rs.

125.8 The ownership of the house

- 1) Owner
- 2) Rented in Mortgaged in
- 3) Relatives house

125.9 If rented in the number of years residing (Number of years)....

125.10 The facilities available

- 1) Telephone
- 2) Electricity
- 3) Pipe water
- 4) Well water

2. The impact of the project

Impact	Code
201 Social environment	
202 Education	
203 health	
204 Environment	
205 Roads	
206 Percent buildings	
207 market	
208 Religious	
209 communication	
210 transport	
211 historical places	
212 Lands	
213 house	

Codes:

- 1) serious but no alternatives
- 2) serious but have alternatives
- 3) insignificant impacts
- 4) Not serious

03 are you willing to see this type of project implementing in your area? Yes/No

301 Is this type of road essential? Yes/No

302 Do you have any objections to leave this area? Yes? No

303 If yes where do you like to get resettled?

- 1) In the homestead it self
- 2) Some where within the village
- 3) Out side of the area
- 4) Any where Govt. named
- 5) to original village (If relevant)

04 What do you expect as compensation if happened to evacuate?

- 401 Money only
- 402 Land and money
- 403 House and money
- 404 only land
- 405 only house
- 406 Land and house
- 407 House, land and money

05 Do you suggest any direction changes to the road trace to minimize likely negative impacts?

06 Suggestions for mitigation of the likely negative impacts

07 Do you have any idea of available unutilized land for resettlement in the re it self? Yes/No

7-1 if yes please provide following details

Location	Size	Ownership

