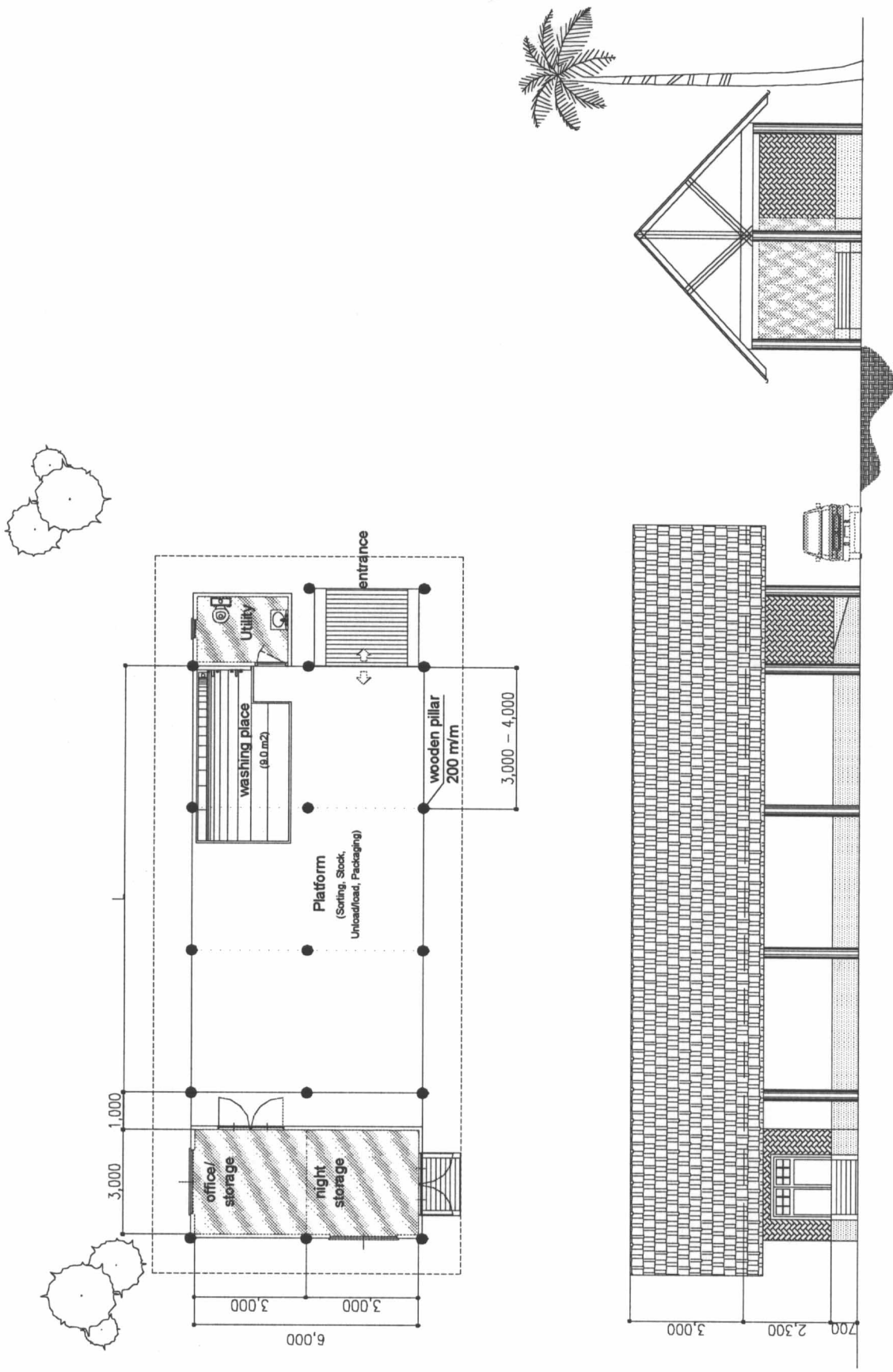


THE FEASIBILITY STUDY ON INTEGRATED AGRICULTURAL AND RURAL DEVELOPMENT IN HIGHLAND AREA

JICA

Fig. 6.6.2 Proposed Irrigation Diagram, Mekarjaya Model Area



THE FEASIBILITY STUDY ON INTEGRATED
 AGRICULTURAL AND RURAL DEVELOPMENT IN
 HIGHLAND AREA

JICA

Fig. 6.6.3
 General Plan of Proposed Collection Center

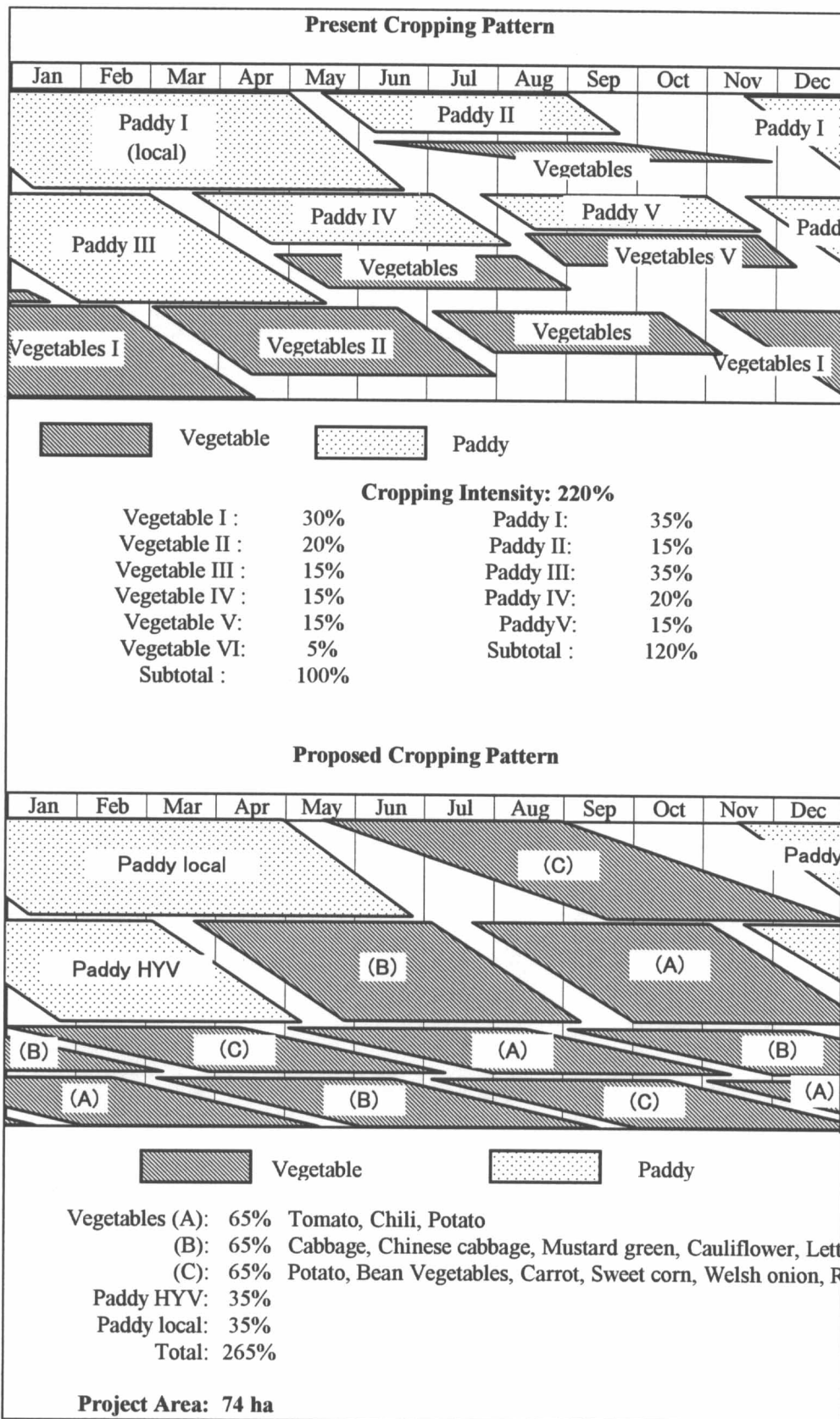
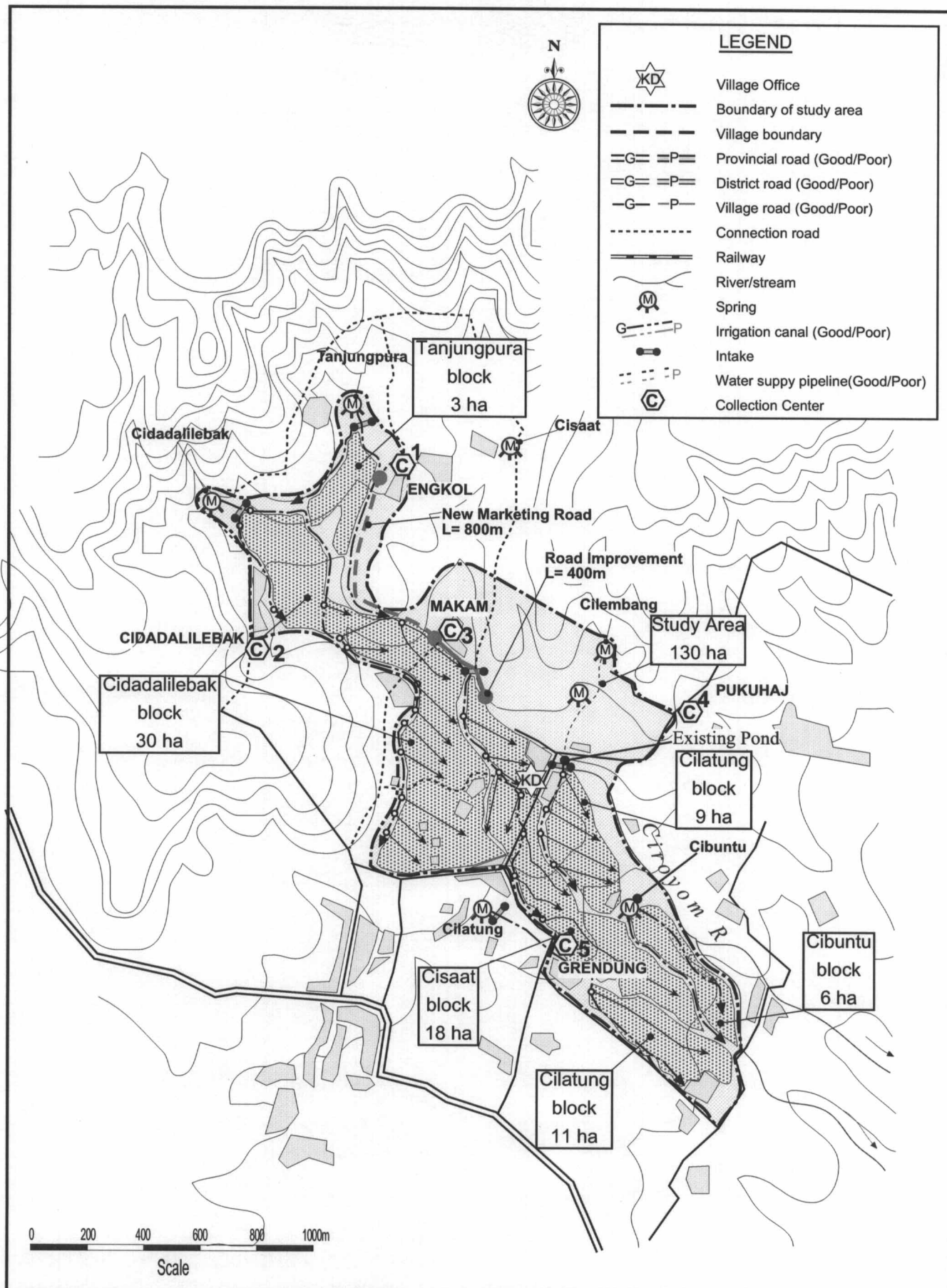


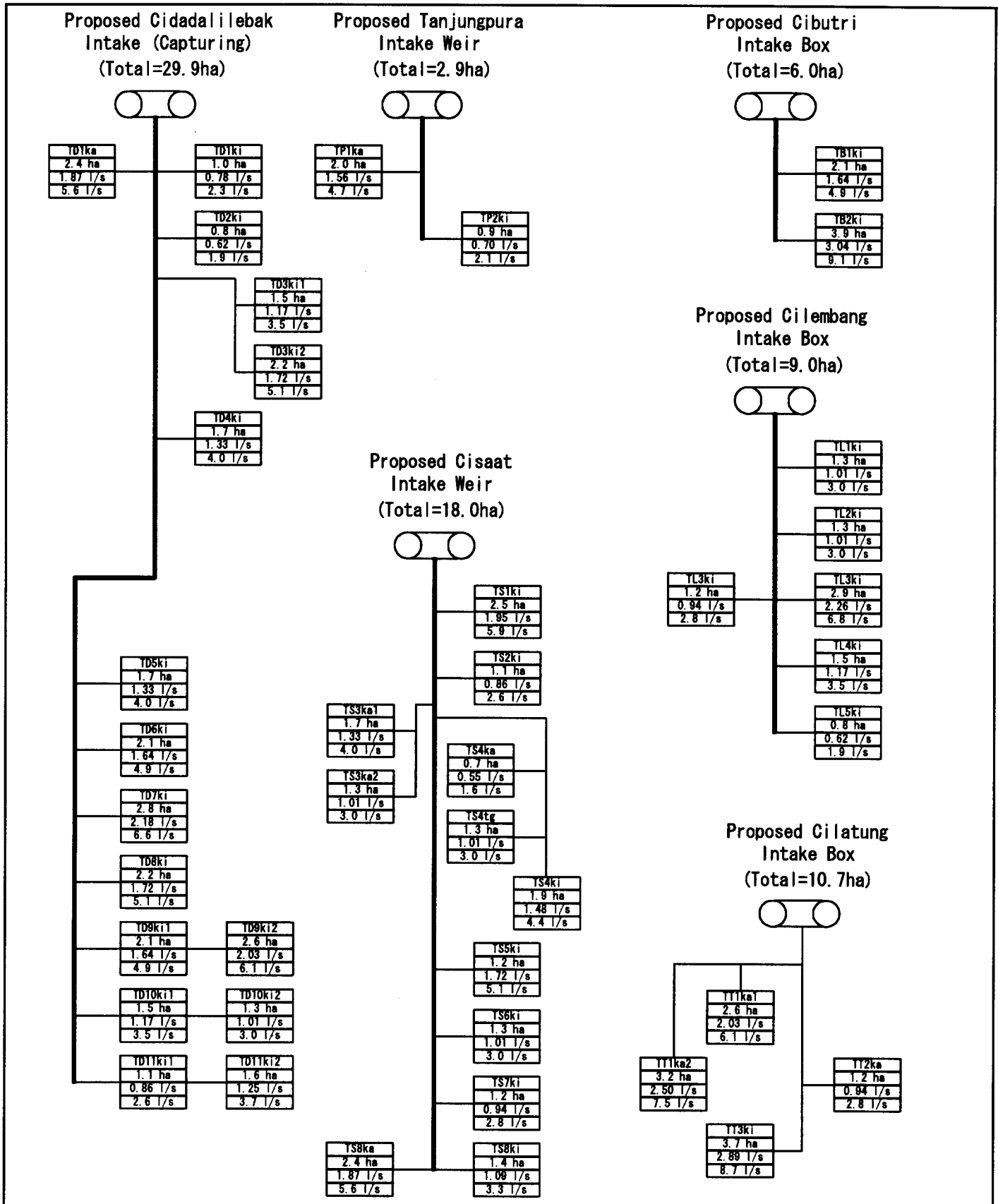
Fig. 7.1.1

Cropping Pattern of Tanjungkarya Model Area



Feasibility Study on Integrated Agricultural and Rural Development In Highland Area
 Japan International Cooperation Agency

Fig. 7.6.1
Infrastructure Development Plan
Tanjungkarya Model Area



Note:
 Diversion requirements are estimated on the basis of an irrigation interval of 3 days. All the areas or blocks can be irrigated in one day for satisfying three days requirements having sufficient water source. The water would be released to the downstream irrigation area for the remaining two days.

Fig. 7.6.2
 Proposed Irrigation Diagram, Tanjungkarya Model Area