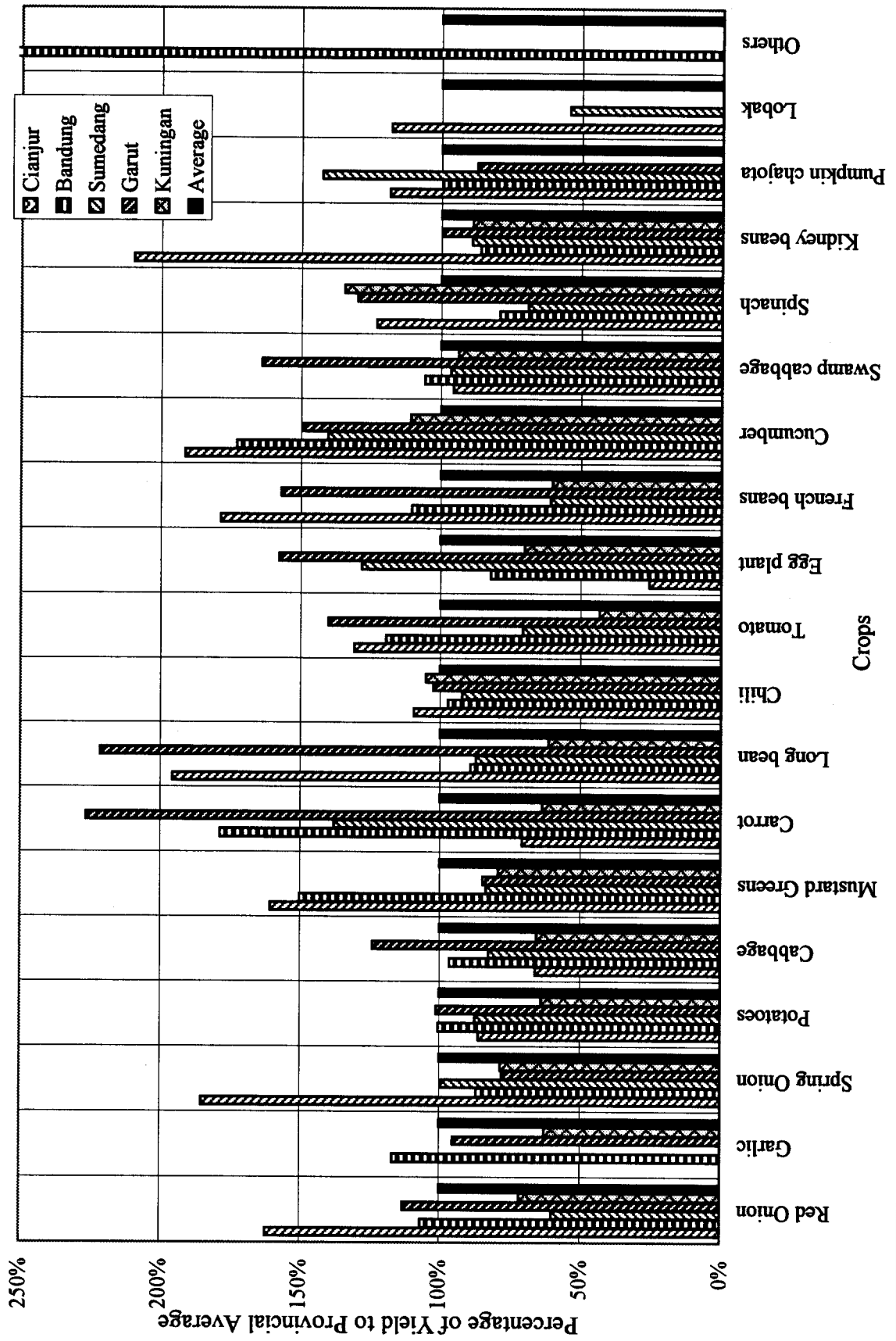


THE FEASIBILITY STUDY ON THE INTEGRATED AGRICULTURAL AND RURAL DEVELOPMENT IN HIGHLAND AREA IN THE REPUBLIC OF INDONESIA

Japan International Cooperation Agency

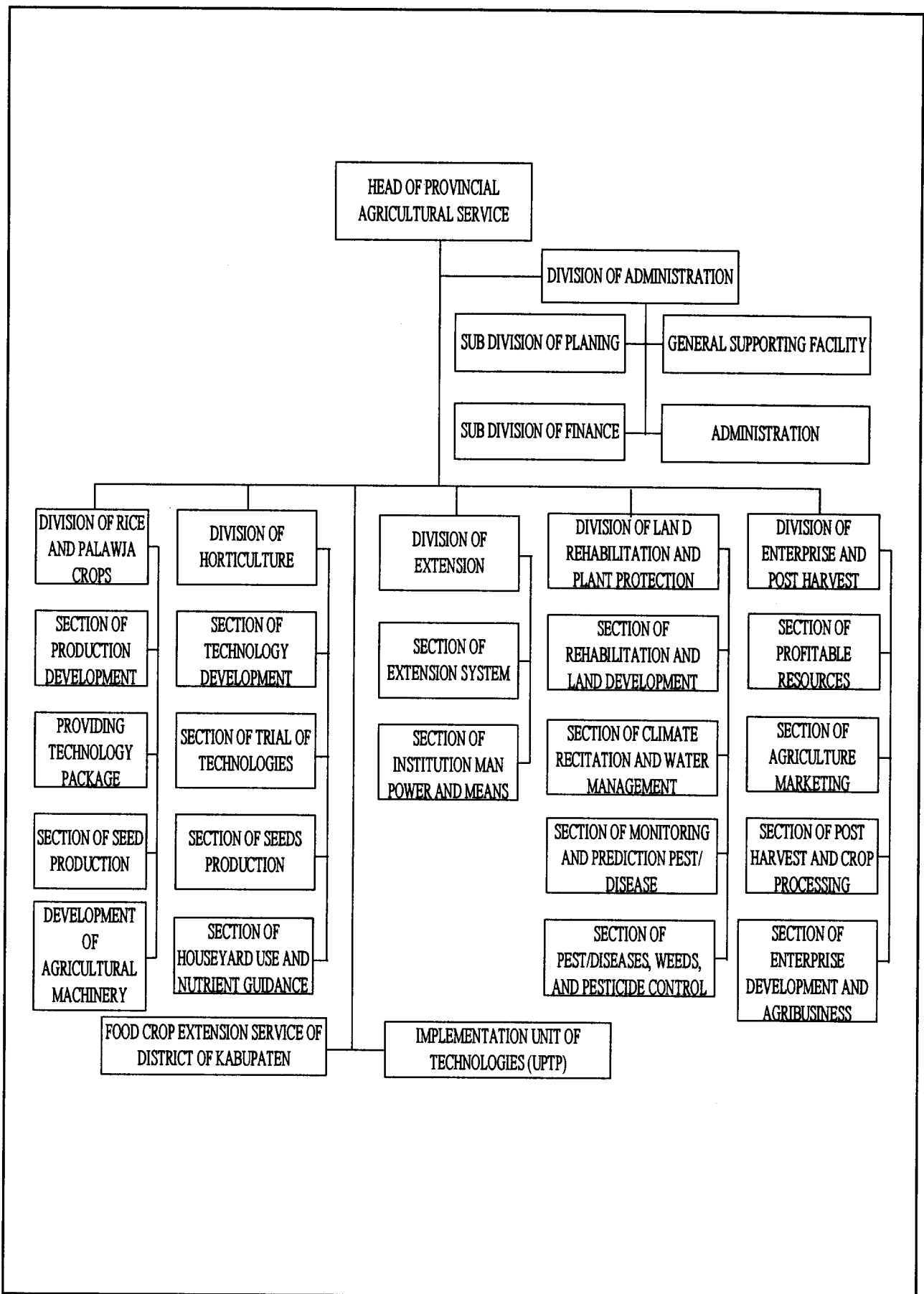
Fig. 3.1.9

Percentage of Harvest Areas of Related 5-Districts to Province Total 1998



THE FEASIBILITY STUDY ON THE INTEGRATED AGRICULTURAL AND RURAL DEVELOPMENT IN HIGHLAND AREA IN THE REPUBLIC OF INDONESIA
 Japan International Cooperation Agency

Fig. 3.1.10
 Percentage of Production of Related 5-Districts to Province Total 1998



THE FEASIBILITY STUDY ON THE INTEGRATED AGRICULTURAL AND RURAL DEVELOPMENT IN HIGHLAND AREA IN THE REPUBLIC OF INDONESIA

Japan International Cooperation Agency

Fig. 3.1.11

Organization Chart of Provincial Agricultural Service

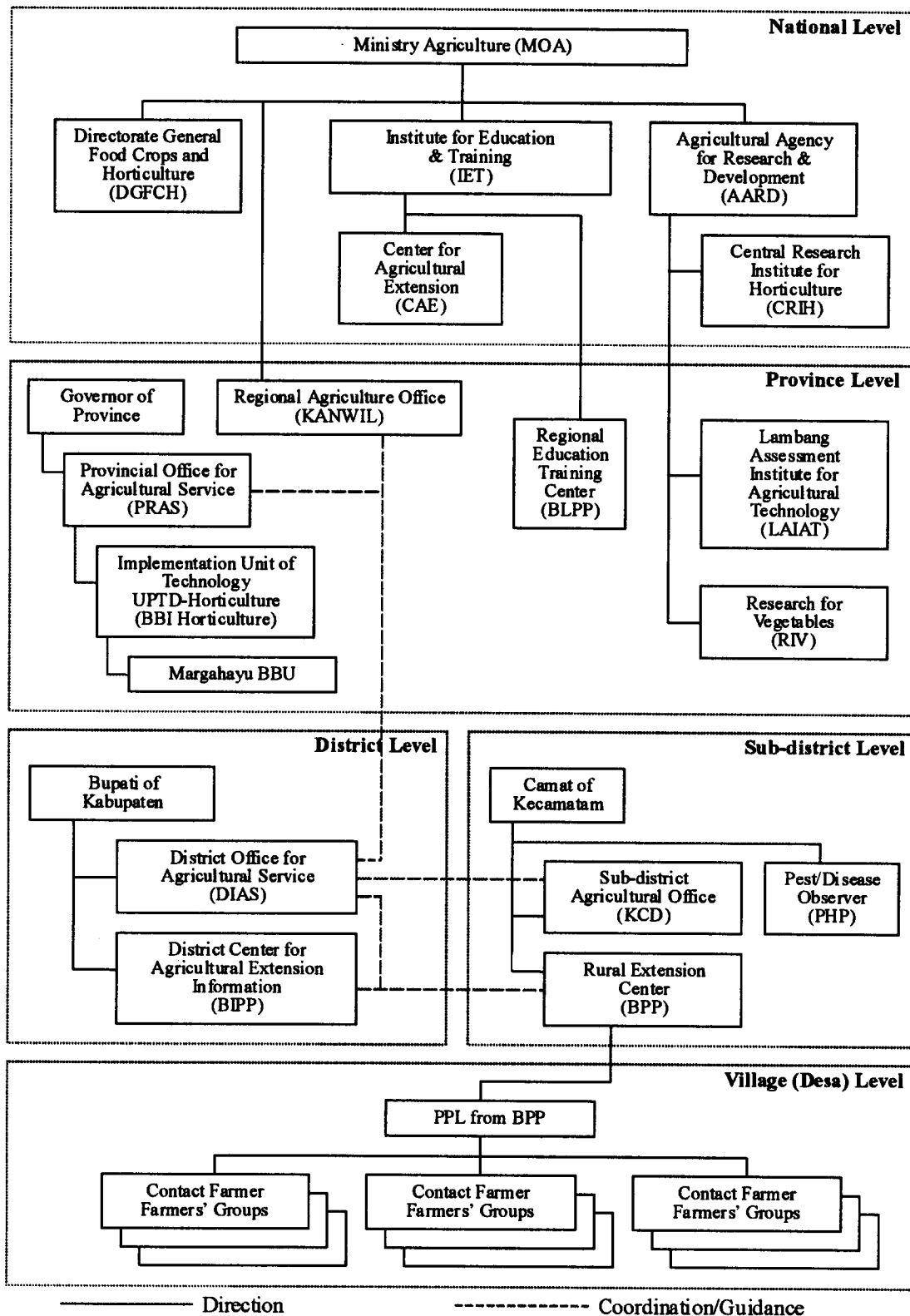
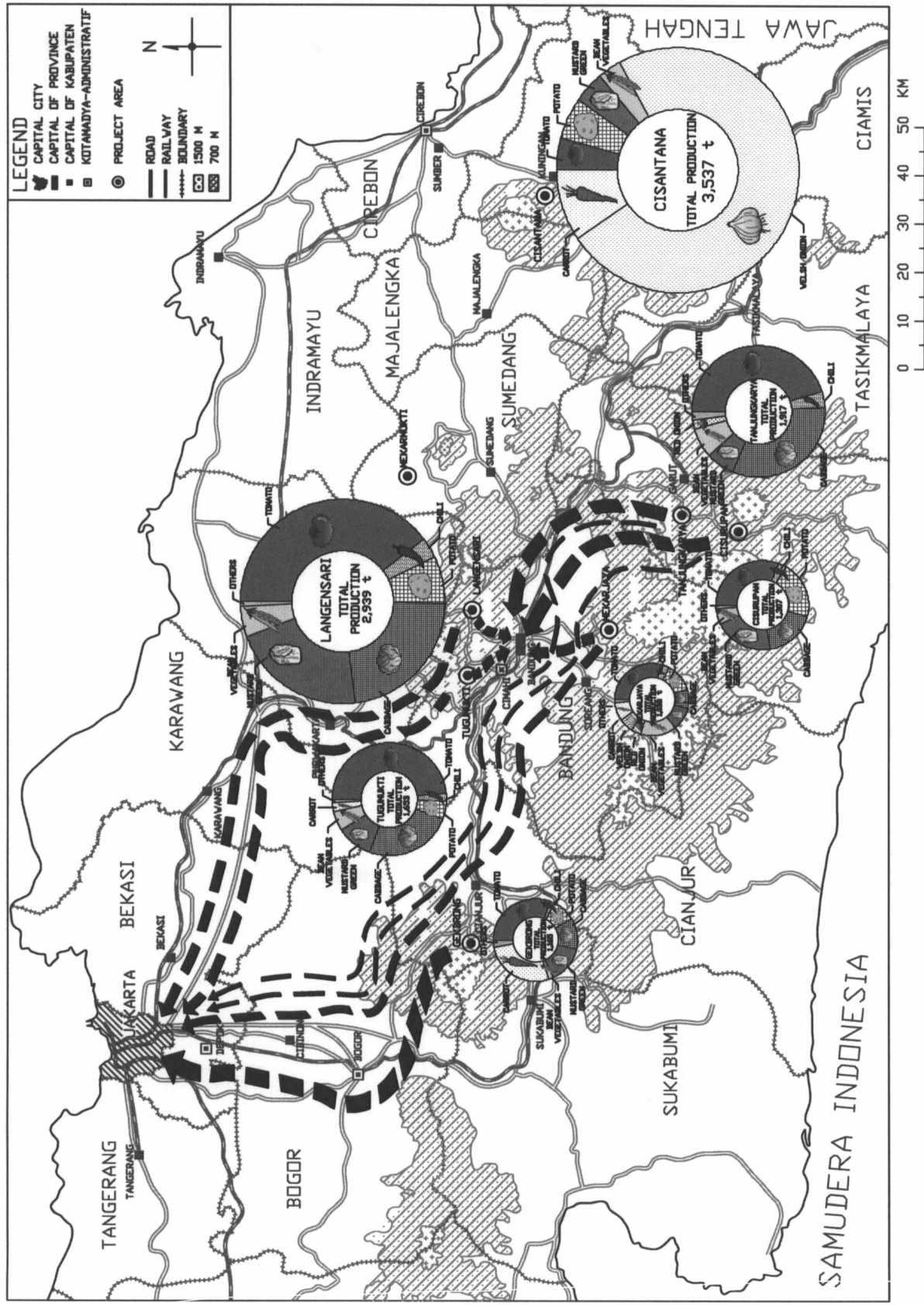


Fig. 3.1.12
Agricultural Extension Service and Relevant Organization



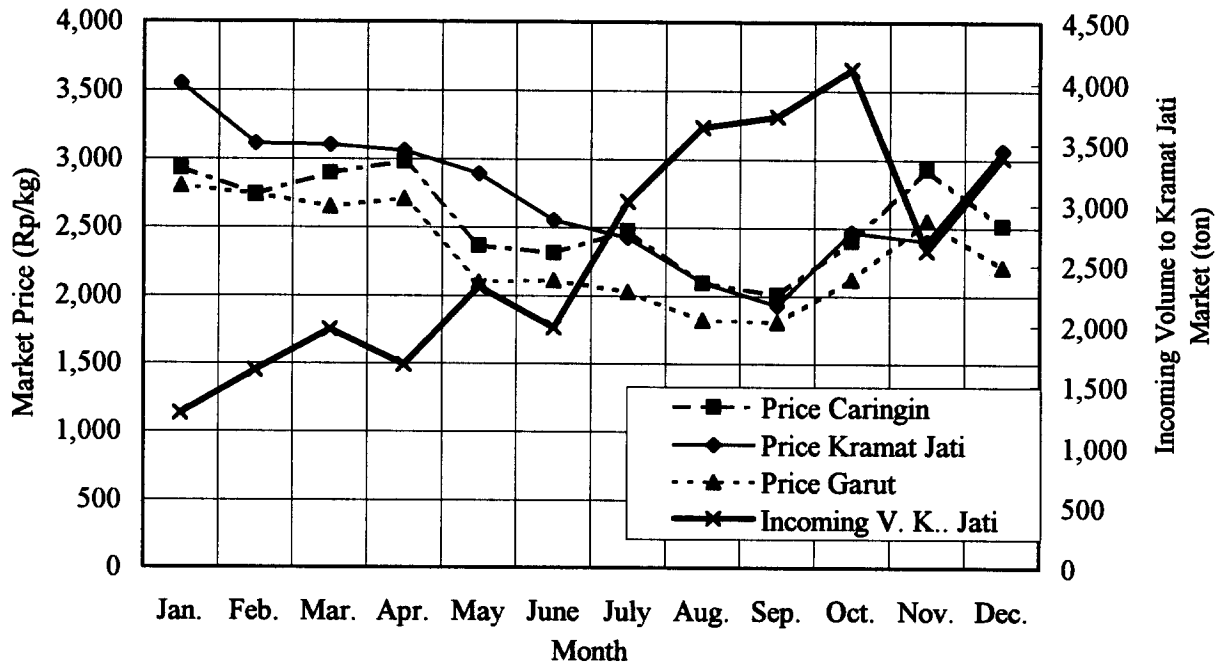
THE FEASIBILITY STUDY ON THE INTEGRATED AGRICULTURAL AND RURAL DEVELOPMENT IN HIGHLAND AREA IN THE REPUBLIC OF INDONESIA

Japan International Cooperation Agency

Fig. 3.1.13

Vegetabel Production and Markets of 8 Model Areas

Potatoes 1999



Cabbage 1999

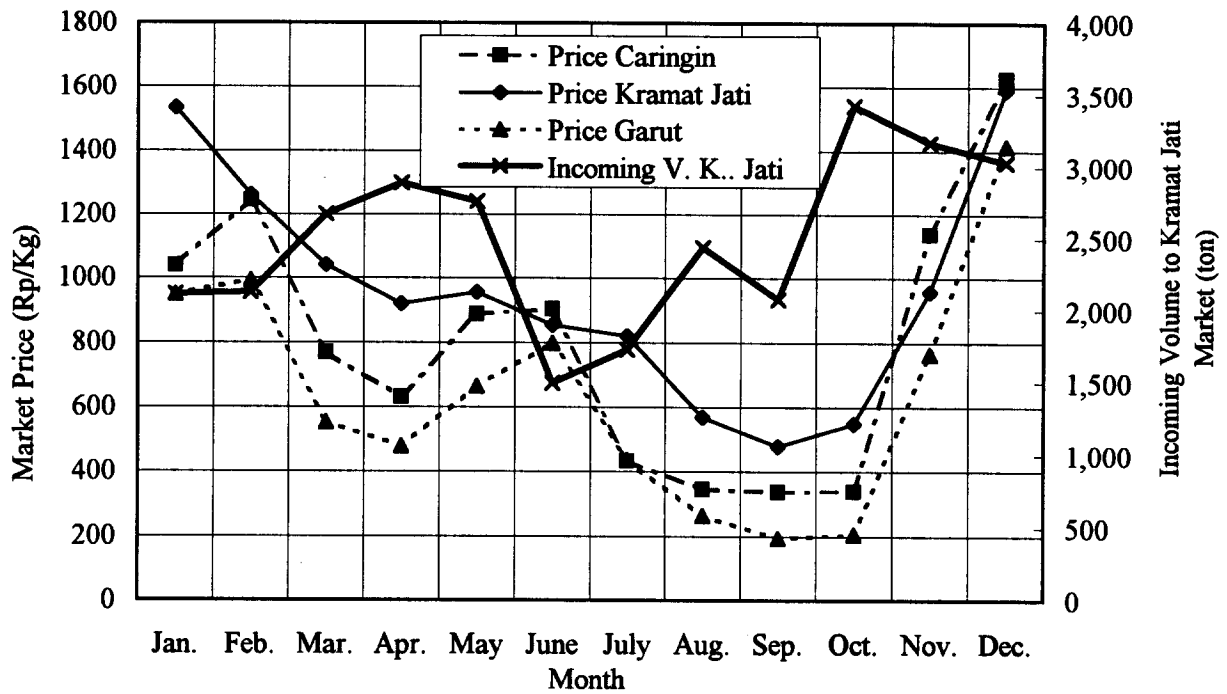
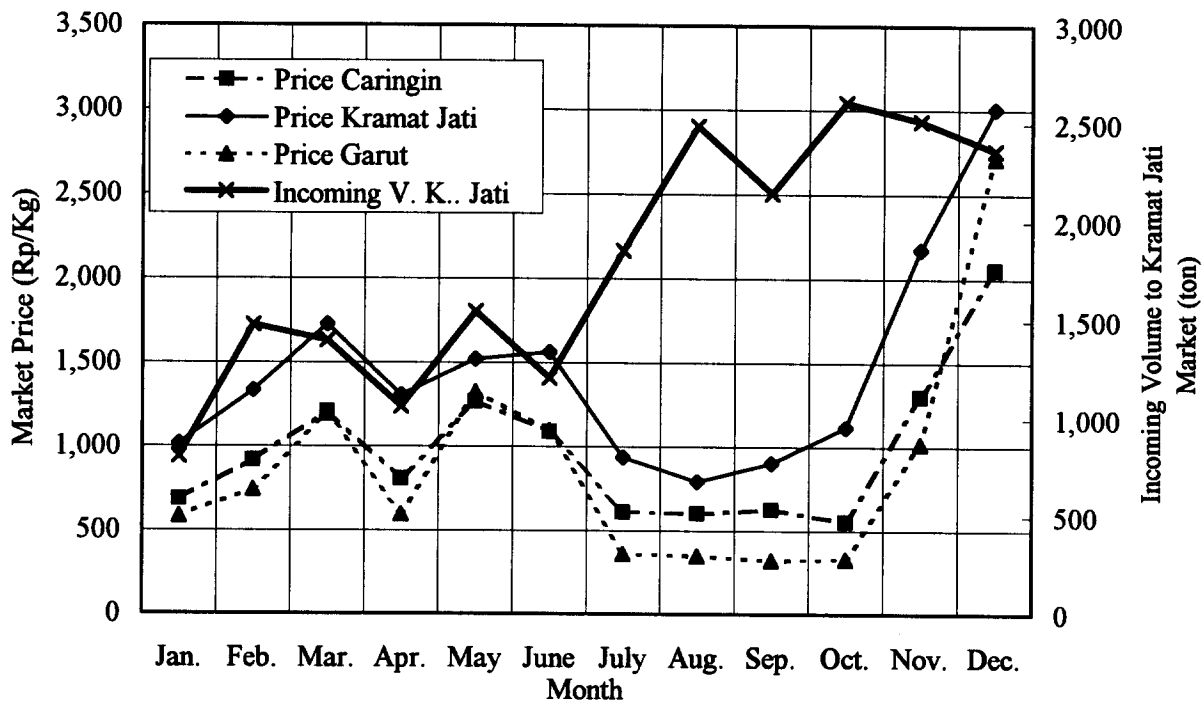


Fig. 3.1.14

Vegetable Prices and Market Volumes (1/2)

Tomatoes 1999



Chili 1999

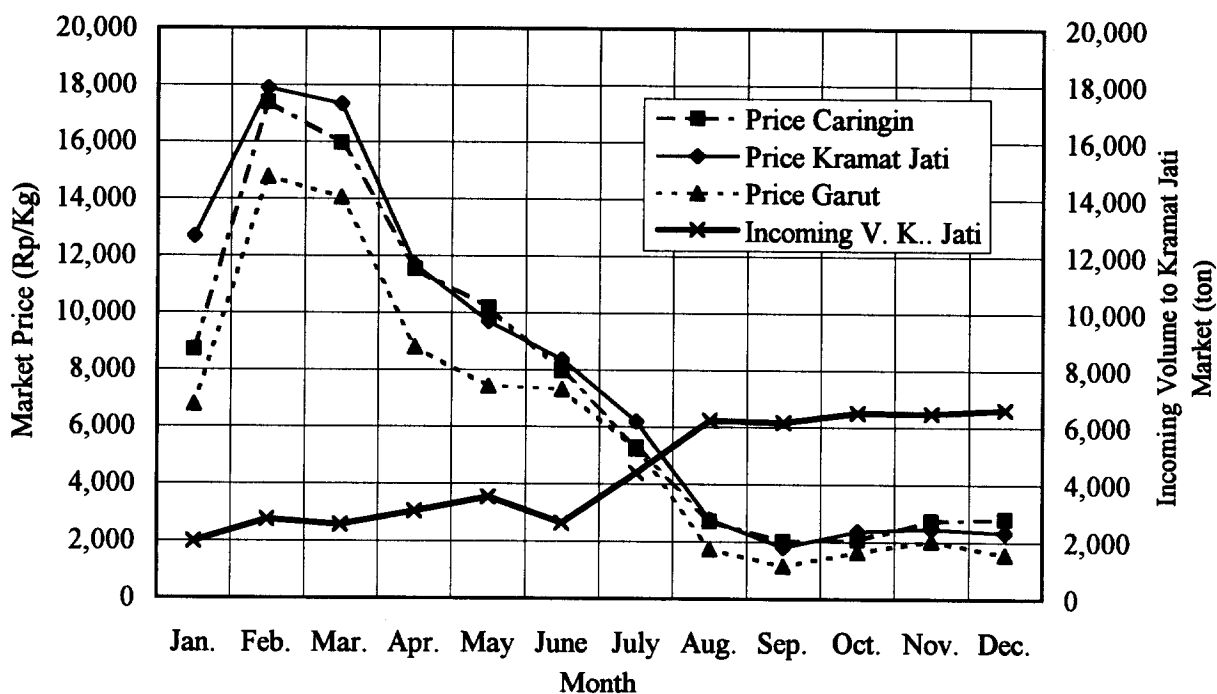
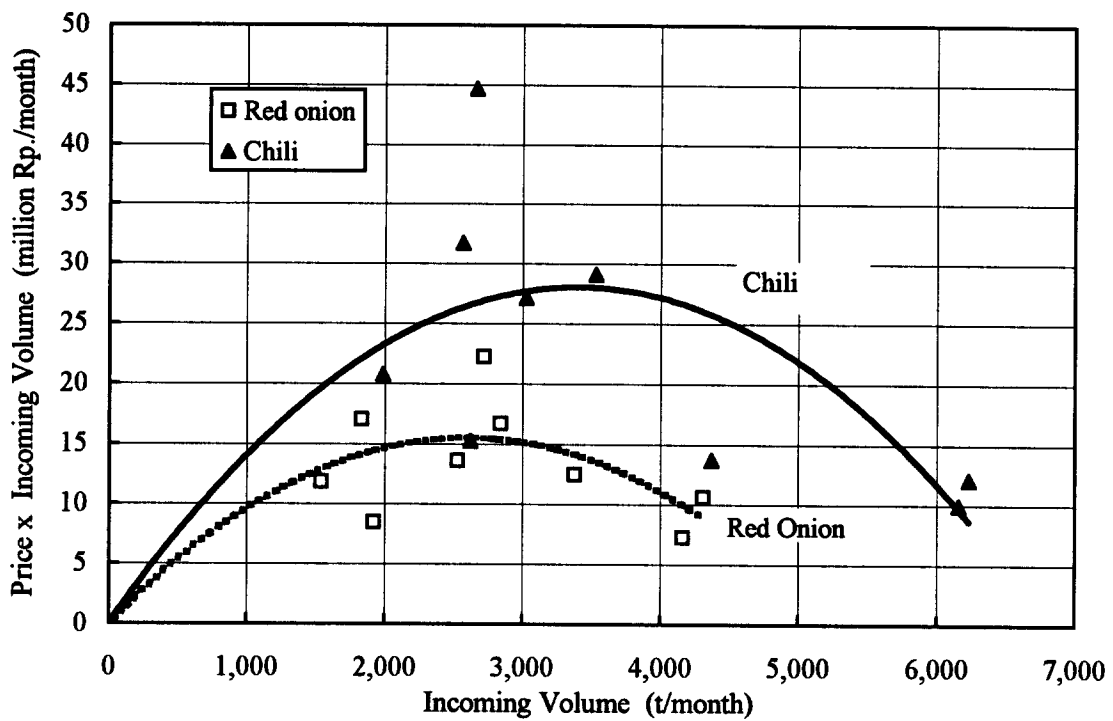
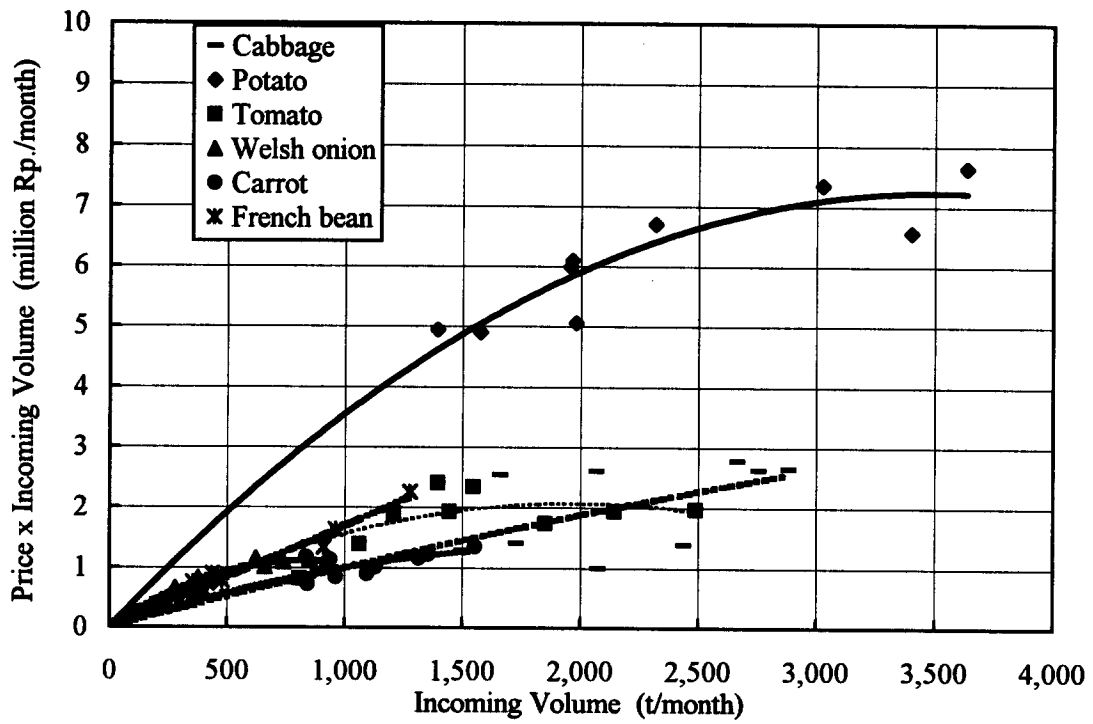


Fig. 3.1.14

Vegetable Prices and Market Volumes (2/2)



THE FEASIBILITY STUDY ON THE INTEGRATED AGRICULTURAL AND RURAL DEVELOPMENT IN HIGHLAND AREA IN THE REPUBLIC OF INDONESIA

Japan International Cooperation Agency

Fig. 3.1.15
Vegetable Marketing Values and Monthly Incoming Volume of Kramat Jati

