

8.3 Projection of Frame Values

8.3.1 Review of Past Population Development and Population Projection

Since the NSO has not yet prepared/issued future population of the provinces, the provincial population for the years 1998 (planning base year), 2004 (medium-term target year) and 2010 (long-term target year) were projected. Available information for the study at present is as follows:

- NSO population census results from 1903 to 1995 (conducted 10 times)
- 1995 Census-based National and Regional Population Projection prepared by the NSO
- 1995 Census-based Regional and Provincial Population Projection prepared by the NEDA Regional Office-VIII
- Provincial Physical Framework Plan/Comprehensive Provincial Land Use Plan (1993-2002) prepared by the Provincial Office (hereafter referred to as "the Land Use Plan")

(1) Comparison of regional population projected by NSO and NEDA

The NSO conducted the national population projections for the period 1995-2040 and the regional projections for the period 1995-2020. The assumptions take into account future trends in the demographic processes of fertility, mortality and migration required by the cohort-component method for projecting population.

In the regional population projection of Region VIII (Eastern Visayas), the subject region composed of the 3rd batch provinces of this study is classified as medium-sized region (projected population of at least 5 million but less than 10 million by year 2020).

On the other hand, the NEDA Regional Office-VIII projected the regional population together with the provincial population for year 2006 based on the 1995 census result.

Table 8.3.1 shows the comparison between the two agencies' projection on the regional population for the years 2000, 2005 and 2010. In the past development, the annual growth rate between 1990 and 1995 drastically increased compared with that of the previous census period. The NSO considered the latest development for its projection. Thus, the growth rates with 5-year interval for the years 1995, 2005 and 2010 are assumed at 2.21%, 2.00% and 1.82%, respectively.

The NEDA Regional Office also projected the population for year 2006 based on the 1995 census result. In this study, the annual growth rate between the two years was calculated at 1.00% using the compounded formula for the purpose of comparison with

NSO projection. Thus, the population in a 5-year interval from year 1995 was estimated as shown below applying 1.00% as annual growth rate. Comparing with the projected population by NSO, the NEDA projection is rather conservative in consideration of the past trend between 1948 and 1995 as shown in Table 8.3.1 and Figure 8.3.1.

| Year | Population | Source/Growth Rate |
|------|------------|--------------------------------------|
| 1995 | 3,366,917 | Census result |
| 2000 | 3,538,664 | Estimated/ 1.00% (1995 - 2006) |
| 2005 | 3,719,171 | Estimated/ 1.00% (1995 - 2006) |
| 2006 | 3,756,193 | NEDA projection/ 1.00% (1995 - 2006) |

Table 8.3.1 Comparison of Regional Population Projection by the NSO and NEDA

| Year | | 1980 | 1990 | 1995 | 2000 | 2005 | 2010 |
|-----------------|-------------|-----------|-----------|-----------|-----------|-----------|-----------|
| Census | Population | 2,799,534 | 3,054,490 | 3,366,917 | | | |
| | Growth Rate | | 0.88% | 1.97% | | | |
| NSO Projection | Population | | | 3,356,854 | 3,743,895 | 4,132,242 | 4,523,762 |
| | Growth Rate | | | | 2.21% | 2.00% | 1.82% |
| NEDA Projection | Population | | | 3,366,917 | 3,538,664 | 3,719,171 | |
| | Growth Rate | | | | 1.00% | 1.00% | |

Note: The 1995 population as of July 1995 was used as a basis for NSO population projection.

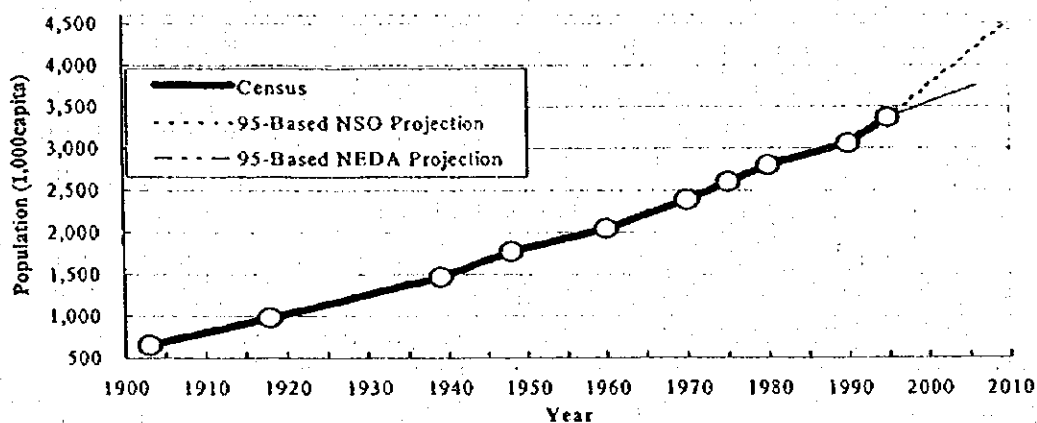


Figure 8.3.1 Past (census) and Projected Population (prepared by NSO and NEDA) of Region-VIII

The NEDA population in 2000 and 2005 were estimated in the study.

(2) The Land Use Plan: Province of Eastern Samar (Planning period 1993-2002)

The provincial and municipal population for the year 2002 was projected with 1990 as base year. The population growth rates by municipality experienced between 1980 and 1990 were basically adopted for the projection. The provincial growth rate was 0.27% between 1980 and 1990. While the experienced and projected growth rates of Region VIII are 0.88 % between 1980 and 1990 and 0.95 % between 1990 and 2002.

The population projection on the provincial total and component municipalities was made with a base year 1990. The population for the year 2002 was projected using a uniform growth rate between 1990 and 2002 referring to the experience from 1980 to 1990 (census years).

Table 8.3.2 shows the past population developments in census years (1980-1995) and projections for the years 1995 and 2002 with 1990 as the base year applying the assumed growth rates for the period 1990 to 2002 in the said comprehensive Provincial Land Use Plan.

Table 8.3.2 Census Population and Projected Population in Land Use Plan

| Municipality | Census Population | | | | Land Use Plan | | | |
|-----------------|-------------------|----------------|-------------------------|----------------|-------------------------|----------------|----------------|-------------------------|
| | 1980 | 1990 | Growth Rate (1980-1990) | 1995 | Growth Rate (1990-1995) | 1995* | 2002 | Growth Rate (1980-2002) |
| Arteche | 11,686 | 11,245 | -0.38% | 12,538 | 2.20% | 10,784 | 10,170 | -0.83% |
| Balangiga | 9,559 | 9,565 | 0.01% | 11,100 | 3.02% | 9,571 | 9,580 | 0.01% |
| Balangkayan | 8,703 | 7,609 | -1.33% | 8,849 | 3.07% | 6,357 | 4,942 | -3.53% |
| Borongon | 39,741 | 44,085 | 1.04% | 48,638 | 1.99% | 48,222 | 54,675 | 1.81% |
| Can-Avid | 12,196 | 13,254 | 0.84% | 15,759 | 3.52% | 14,273 | 15,833 | 1.49% |
| Dolores | 26,949 | 30,570 | 1.27% | 34,272 | 2.31% | 33,978 | 39,398 | 2.14% |
| Gen. Macarthur | 7,937 | 9,627 | 1.95% | 10,041 | 0.85% | 11,168 | 13,747 | 3.01% |
| Giporlos | 10,128 | 11,001 | 0.83% | 10,050 | -1.79% | 11,842 | 13,129 | 1.48% |
| Guiuan | 30,689 | 33,825 | 0.98% | 35,447 | 0.94% | 36,822 | 41,470 | 1.71% |
| Hernani | 7,032 | 6,840 | -0.28% | 8,055 | 3.32% | 6,641 | 6,372 | -0.59% |
| Jipapad | 4,586 | 5,207 | 1.28% | 6,222 | 3.63% | 5,791 | 6,721 | 2.15% |
| Lawaan | 7,275 | 7,792 | 0.69% | 9,725 | 4.53% | 8,294 | 9,052 | 1.26% |
| Llorente | 19,091 | 18,278 | -0.43% | 16,071 | -2.54% | 17,424 | 16,296 | -0.95% |
| Maslog | 1,956 | 3,089 | 4.68% | 3,634 | 3.30% | 4,031 | 5,851 | 5.47% |
| Maydolong | 11,353 | 10,656 | -0.63% | 12,201 | 2.74% | 9,912 | 8,957 | -1.44% |
| Mercedes | 4,848 | 4,505 | -0.73% | 5,473 | 3.97% | 4,136 | 3,669 | -1.70% |
| Oras | 27,031 | 26,978 | -0.02% | 31,533 | 3.17% | 26,924 | 26,849 | -0.04% |
| Quinapondan | 11,355 | 10,986 | -0.33% | 12,644 | 2.85% | 10,602 | 10,086 | -0.71% |
| Salcedo | 16,355 | 16,597 | 0.15% | 16,026 | -0.70% | 16,840 | 17,187 | 0.29% |
| San Julian | 13,007 | 11,469 | -1.25% | 11,858 | 0.67% | 9,725 | 7,719 | -3.25% |
| San Policarpo | 12,258 | 9,970 | -2.04% | 11,565 | 3.01% | 7,085 | 4,392 | -6.60% |
| Sulat | 12,357 | 12,738 | 0.30% | 14,010 | 1.92% | 13,117 | 13,667 | 0.59% |
| Taft | 14,545 | 13,449 | -0.78% | 16,613 | 4.32% | 12,263 | 10,777 | -1.83% |
| Province | 320,637 | 329,335 | 0.27% | 362,324 | 1.93% | 335,804 | 350,539 | 0.52% |

Note: * Population in 1995 was estimated using growth rate employed in Land Use Plan

Comparing the census and the projected population in 1995, the provincial population of the census is about 8% higher than the projected. Regarding the municipal census population in 1995, seventeen (17) out of 23 municipalities were higher with a range of 1% to 63% comparing with the projected figures, while the remaining six (6) municipalities were lower with a range of -4% to -15%.

In addition to this, the province is presently updating its Land Use Plan using the NEDA projection based on the 1995 census population. Thus, the future projection shall be made using the 1995 census results as the base year.

(3) Population Projection of the Province

The following conditions are considered in the population projection.

Regional Population

For the regional population in the study, the projection conducted by NEDA regional office may be adopted assuming that rather conservative population growth will be realized comparing with NSO projection.

- 1) The regional population projected by the NEDA for the year 2006 is referred to for the short and medium-term periods. The annual growth rate of 1.00% between 1995 and 2006 will be adopted for the population in 1998 and 2004 using compounded formula with 1995 as base year.
- 2) For the long-term projection, it is assumed that the annual growth rates will decrease gradually as adopted in the NSO projection. The annual growth rates adopted in the NSO projection declined from 2.00% (2000 - 2005) to 1.82% (2005 - 2010), which indicated that the relative reduction rate is 0.09%. In this study, the same reduction rate may be used to the NEDA projected growth rate of 1.00% (2000 - 2005). Thus, the population in year 2010 is estimated at 3,891,501 applying the growth rate of 0.91% from year 2005. The growth rates adopted in the study correspond to half of the figures employed by NSO.

| <u>Year</u> | <u>Population</u> | <u>Growth Rate</u> |
|-------------|-------------------|---------------------|
| 1995 | 3,366,917 | Census result |
| 1998 | 3,468,938 | 1.00% (1995 - 1998) |
| 2004 | 3,682,348 | 1.00% (1995 - 2004) |
| 2005 | 3,719,171 | 1.00% (1995 - 2005) |
| 2010 | 3,891,501 | 0.91% (2005 - 2010) |

Provincial Population

In the NEDA projection, the regional population to be increased from 1995 to 2006 was distributed to each province in proportion to the share of the provincial population increase to the regional population experienced between 1990 and 1995. In this study, it is assumed that the tendency of the population growth by province will not drastically change. Thus, the same manner as adopted by NEDA projection was employed both for

short/medium-term and long-term periods in the population distribution from the regional population to those for concerned provinces. The distribution of the regional population to be increased to the provincial population was made between the respective base/target years. Table 8.3.3 shows the projected population in year 1998, 2004 and 2010 together with the NEDA projection.

Table 8.3.3 Projected Population of the Province

| Province | NEDA Projection | | | | Projected Population | | |
|----------------|------------------|------------------|---------------------|----------------|----------------------|------------------|------------------|
| | Population | | Population Increase | | 1998 | 2004 | 2010 |
| | 1995 | 2006 | Number | Share | | | |
| Biliran | 132,209 | 149,921 | 17,712 | 4.55% | 136,851 | 146,561 | 156,077 |
| Eastern Samar | 362,324 | 403,509 | 41,185 | 10.58% | 373,118 | 395,697 | 417,825 |
| Leyte | 1,511,251 | 1,689,501 | 178,250 | 45.79% | 1,557,966 | 1,655,686 | 1,751,458 |
| Northern Samar | 454,195 | 542,288 | 88,093 | 22.63% | 477,282 | 525,577 | 572,908 |
| Samar | 589,373 | 658,859 | 69,486 | 17.85% | 607,584 | 645,678 | 683,012 |
| Southern Leyte | 317,565 | 312,115 | -5,450 | -1.40% | 316,137 | 313,149 | 310,221 |
| Region | 3,366,917 | 3,756,193 | 389,276 | 100.00% | 3,468,938 | 3,682,348 | 3,891,501 |

Municipal Population

- 1) The total population of the province in 1998, 2004 and 2010 was fixed.
- 2) For the population projection by municipality, the same method employed in NEDA projection for the distribution of regional population to provincial population was applied. The provincial population to be increased in respective planning years was distributed to each municipality in proportion to the share of the population increase of each municipality to the provincial total experienced between 1990 and 1995. Table 8.3.4 presents the census results (1990 and 1995) and the projected population of the municipalities.

Table 8.3.4 Census Results and Projected Population for Municipality

| Municipality | Census Result | | | | Projected Population | | | | | |
|----------------|---------------|--------|-------------|----------------------------|----------------------|-----|------------|------|------------|------|
| | 1990 | 1995 | Pop. Growth | Share to Prov'l Pop Growth | 1998 | | 2004 | | 2010 | |
| | | | | | Population | GR | Population | GR | Population | GR |
| Arteche | 11,245 | 12,538 | 2.20% | 3.9% | 12,961 | 1.1 | 13,846 | 1.11 | 14,713 | 1.02 |
| Balangiga | 9,565 | 11,100 | 3.02% | 4.7% | 11,602 | 1.4 | 12,653 | 1.46 | 13,683 | 1.31 |
| Balangkayan | 7,609 | 8,849 | 3.07% | 3.8% | 9,255 | 1.5 | 10,104 | 1.47 | 10,936 | 1.33 |
| Borongan | 44,085 | 48,638 | 1.99% | 13.8% | 50,129 | 1.0 | 53,244 | 1.01 | 56,298 | 0.93 |
| Can-Avid | 13,254 | 15,759 | 3.52% | 7.6% | 16,579 | 1.7 | 18,294 | 1.65 | 19,974 | 1.48 |
| Dolores | 30,570 | 34,272 | 2.31% | 11.2% | 35,483 | 1.1 | 38,016 | 1.16 | 40,499 | 1.06 |
| Gen. Macarthur | 9,627 | 10,041 | 0.85% | 1.3% | 10,176 | 0.4 | 10,459 | 0.46 | 10,737 | 0.44 |
| Giporlos | 11,001 | 10,050 | -1.79% | -2.9% | 9,739 | - | 9,088 | - | 8,450 | - |
| Guiuan | 33,825 | 35,447 | 0.94% | 4.9% | 35,978 | 0.5 | 37,038 | 0.51 | 38,176 | 0.48 |
| Hernani | 6,840 | 8,055 | 3.32% | 3.7% | 8,453 | 1.6 | 9,285 | 1.58 | 10,100 | 1.41 |
| Jipapad | 5,207 | 6,222 | 3.63% | 3.1% | 6,554 | 1.7 | 7,249 | 1.69 | 7,930 | 1.51 |

Table 8.3.4 Census Results and Projected Population for Municipality

(cont'd)

| Municipality | Census Result | | | | Projected Population | | | | | |
|-----------------|---------------|---------------|--------------|----------------------------|----------------------|------------|----------------|-------------|----------------|-------------|
| | 1990 | 1995 | Pop. Growth | Share to Prov'l Pop Growth | 1998 | | 2004 | | 2010 | |
| | | | | | Population | GR | Population | GR | Population | GR |
| Lawaan | 7,792 | 9,725 | 4.53% | 5.9% | 10,357 | 2.1 | 11,680 | 2.02 | 12,977 | 1.77 |
| Llorente | 18,278 | 16,071 | -2.54% | -6.7% | 15,349 | - | 13,838 | - | 12,358 | - |
| Maslog | 3,089 | 3,634 | 3.30% | 1.7% | 3,812 | 1.6 | 4,185 | 1.57 | 4,551 | 1.41 |
| Maydolong | 10,656 | 12,201 | 2.74% | 4.7% | 12,707 | 1.3 | 13,764 | 1.34 | 14,800 | 1.22 |
| Mercedes | 4,505 | 5,473 | 3.97% | 2.9% | 5,790 | 1.8 | 6,453 | 1.82 | 7,102 | 1.61 |
| Oras | 26,978 | 31,533 | 3.17% | 13.8% | 33,023 | 1.5 | 36,141 | 1.52 | 39,196 | 1.36 |
| Quinapondan | 10,986 | 12,544 | 2.85% | 5.0% | 13,186 | 1.4 | 14,321 | 1.39 | 15,433 | 1.25 |
| Salcedo | 16,597 | 16,026 | -0.70% | -1.7% | 15,839 | - | 15,448 | - | 15,065 | - |
| San Julian | 11,469 | 11,858 | 0.67% | 1.2% | 11,985 | 0.3 | 12,251 | 0.37 | 12,512 | 0.35 |
| San Policarpo | 9,970 | 11,565 | 3.01% | 4.8% | 12,087 | 1.4 | 13,179 | 1.45 | 14,249 | 1.31 |
| Sulat | 12,738 | 14,010 | 1.92% | 3.9% | 14,426 | 0.9 | 15,297 | 0.98 | 16,150 | 0.91 |
| Taft | 13,449 | 16,613 | 4.32% | 9.6% | 17,648 | 2.0 | 19,814 | 1.95 | 21,936 | 1.71 |
| Province | 329,33 | 362,32 | 1.93% | 100.0% | 373,118 | 0.9 | 395,697 | 0.98 | 417,825 | 0.91 |

Note: Growth rates in 1998, 2004 and 2010 were calculated using compounded formula.

Population by Urban and Rural Area

1) Past population development

Table 8.3.5 shows the urban and rural population with growth rates in census years (1980-1995) by municipality. With regard to the ratio of the urban population of the province to the total population, the provincial averages in 1980 and 1990 were 26.8% and 38.8% and it decreased to 33.7% in 1995. The provincial growth rate of 4.06% between 1980 and 1990 decreased to 1.59% in 1995. While the growth rates of rural population were -1.52% (1980 - 1990) and 3.59% (1990 - 1995) as the provincial average.

2) Projection of urban and rural population for the years 1998, 2004 and 2010

Urban population by municipality for the target years was first projected and the rural population was calculated to meet the aforementioned total population by fixing the urban population.

In the projection of municipal urban population, the following are assumed by short/medium-term and long-term periods.

Table 8.3.5 Past Population Development by Urban and Rural Area

| Municipality | 1980 | | | 1990 | | | | 1995 | | | | |
|-----------------|----------------|----------------|--------------|---------------|----------------|---------------|--------------|---------------|----------------|--------------|--------------|-------|
| | Total | Urban/Rural | Share (%) | Total | Urban/Rural | G.R. (%) | Share (%) | Total | Urban/Rural | G.R. (%) | Share (%) | |
| Urban Area | Arteche | 11,686 | 3,826 | 33.3% | 11,245 | 5,829 | 4.11% | 51.8% | 12,538 | 4,541 | 1.78% | 36.2% |
| | Balangiga | 9,559 | 4,623 | 48.4% | 9,565 | 4,776 | 0.33% | 49.9% | 11,100 | 5,491 | 0.19% | 49.5% |
| | Balangkayan | 8,703 | 3,136 | 36.0% | 7,609 | 6,278 | 7.19% | 82.5% | 8,849 | 2,985 | 2.57% | 33.7% |
| | Borongon | 39,741 | 5,697 | 14.3% | 44,085 | 22,606 | 14.78% | 51.3% | 48,638 | 20,078 | 3.62% | 41.3% |
| | Can-Avid | 12,196 | 3,941 | 32.3% | 13,254 | 4,218 | 0.68% | 31.8% | 15,759 | 5,077 | 0.38% | 32.2% |
| | Dolores | 26,949 | 6,774 | 25.1% | 30,570 | 7,141 | 0.53% | 23.4% | 34,272 | 9,426 | 0.30% | 27.5% |
| | Gen. Macarthur | 7,937 | 3,398 | 42.8% | 9,627 | 4,314 | 2.42% | 44.8% | 10,041 | 4,360 | 1.18% | 43.4% |
| | Giporlos | 10,128 | 4,348 | 42.9% | 11,001 | 5,599 | 2.56% | 50.9% | 10,050 | 5,021 | 1.24% | 50.0% |
| | Guiuan | 30,689 | 8,978 | 29.3% | 33,825 | 13,630 | 4.26% | 40.3% | 35,447 | 9,709 | 1.83% | 27.4% |
| | Hernani | 7,032 | 816 | 11.6% | 6,840 | 1,699 | 7.61% | 24.8% | 8,055 | 2,003 | 2.66% | 24.9% |
| | Jipapad | 4,586 | 2,634 | 57.4% | 5,207 | 2,689 | 0.21% | 51.6% | 6,222 | 3,115 | 0.12% | 50.1% |
| | Lawaan | 7,275 | 3,208 | 44.1% | 7,792 | 3,403 | 0.59% | 43.7% | 9,725 | 4,442 | 0.33% | 45.7% |
| | Llorente | 19,091 | 7,049 | 36.9% | 18,278 | 7,244 | 0.27% | 39.6% | 16,071 | 6,478 | 0.16% | 40.3% |
| | Maslog | 1,956 | 449 | 23.0% | 3,089 | 936 | 7.62% | 30.3% | 3,634 | 1,072 | 2.66% | 29.5% |
| | Maydolong | 11,353 | 4,321 | 38.1% | 10,656 | 4,324 | 0.01% | 40.6% | 12,201 | 4,953 | 0.00% | 40.6% |
| | Mercedes | 4,848 | 441 | 9.1% | 4,505 | 918 | 7.61% | 20.4% | 5,473 | 1,160 | 2.66% | 21.2% |
| | Oras | 27,031 | 4,464 | 16.5% | 26,978 | 9,299 | 7.61% | 34.5% | 31,533 | 8,665 | 2.66% | 27.5% |
| | Quinapondan | 11,355 | 2,303 | 20.3% | 10,986 | 2,303 | 0.00% | 21.0% | 12,644 | 4,060 | 0.00% | 32.1% |
| | Salcedo | 16,355 | 2,755 | 16.8% | 16,597 | 3,032 | 0.96% | 18.3% | 16,026 | 3,001 | 0.53% | 18.7% |
| | San Julian | 13,007 | 2,737 | 21.0% | 11,469 | 4,073 | 4.06% | 35.5% | 11,858 | 2,718 | 1.77% | 22.9% |
| San Policarpo | 12,258 | 3,210 | 26.2% | 9,970 | 3,708 | 1.45% | 37.2% | 11,565 | 4,056 | 0.76% | 35.1% | |
| Sulat | 12,357 | 1,985 | 16.1% | 12,738 | 4,135 | 7.61% | 32.5% | 14,010 | 4,839 | 2.66% | 34.5% | |
| Taft | 14,545 | 4,667 | 32.1% | 13,449 | 5,674 | 1.97% | 42.2% | 16,613 | 4,743 | 1.00% | 28.5% | |
| Province | 320,63 | 85,830 | 26.8% | 329,33 | 127,828 | 4.06% | 38.8% | 362,32 | 121,993 | 1.59% | 33.7% | |
| Rural Area | Arteche | 11,686 | 7,790 | 66.7% | 11,245 | 5,416 | -3.57% | 48.2% | 12,538 | 7,997 | 8.11% | 63.8% |
| | Balangiga | 9,559 | 4,936 | 51.6% | 9,565 | 4,789 | -0.30% | 50.1% | 11,100 | 5,609 | 3.21% | 50.5% |
| | Balangkayan | 8,703 | 5,567 | 64.0% | 7,609 | 1,331 | | 17.5% | 8,849 | 5,864 | 34.53% | 66.3% |
| | Borongon | 39,741 | 34,044 | 85.7% | 44,085 | 21,479 | -4.50% | 48.7% | 48,638 | 28,560 | 5.86% | 58.7% |
| | Can-Avid | 12,196 | 8,255 | 67.7% | 13,254 | 9,036 | 0.91% | 68.2% | 15,759 | 10,682 | 3.40% | 67.8% |
| | Dolores | 26,949 | 20,175 | 74.9% | 30,570 | 23,429 | 1.51% | 76.6% | 34,272 | 24,846 | 1.18% | 72.5% |
| | Gen. Macarthur | 7,937 | 4,539 | 57.2% | 9,627 | 5,313 | 1.59% | 55.2% | 10,041 | 5,681 | 1.35% | 56.6% |
| | Giporlos | 10,128 | 5,780 | 57.1% | 11,001 | 5,402 | -0.67% | 49.1% | 10,050 | 5,029 | -1.42% | 50.0% |
| | Guiuan | 30,689 | 21,711 | 70.7% | 33,825 | 20,195 | -0.72% | 59.7% | 35,447 | 25,738 | 4.97% | 72.6% |
| | Hernani | 7,032 | 6,216 | 88.4% | 6,840 | 5,141 | -1.88% | 75.2% | 8,055 | 6,052 | 3.32% | 75.1% |
| | Jipapad | 4,586 | 1,952 | 42.6% | 5,207 | 2,518 | 2.58% | 48.4% | 6,222 | 3,107 | 4.29% | 49.9% |
| | Lawaan | 7,275 | 4,067 | 55.9% | 7,792 | 4,389 | 0.76% | 56.3% | 9,725 | 5,283 | 3.78% | 54.3% |
| | Llorente | 19,091 | 12,042 | 63.1% | 18,278 | 11,034 | -0.87% | 60.4% | 16,071 | 9,593 | -2.76% | 59.7% |
| | Maslog | 1,956 | 1,507 | 77.0% | 3,089 | 2,153 | 3.63% | 69.7% | 3,634 | 2,562 | 3.54% | 70.5% |
| | Maydolong | 11,353 | 7,032 | 61.9% | 10,656 | 6,332 | -1.04% | 59.4% | 12,201 | 7,248 | 2.74% | 59.4% |
| | Mercedes | 4,848 | 4,407 | 90.9% | 4,505 | 3,587 | -2.04% | 79.6% | 5,473 | 4,313 | 3.76% | 78.8% |
| | Oras | 27,031 | 22,567 | 83.5% | 26,978 | 17,679 | -2.41% | 65.5% | 31,533 | 22,868 | 5.28% | 72.5% |
| | Quinapondan | 11,355 | 9,052 | 79.7% | 10,986 | 8,683 | -0.42% | 79.0% | 12,644 | 8,584 | -0.23% | 67.9% |
| | Salcedo | 16,355 | 13,600 | 83.2% | 16,597 | 13,565 | -0.03% | 81.7% | 16,026 | 13,025 | -0.81% | 81.3% |
| | San Julian | 13,007 | 10,270 | 79.0% | 11,469 | 7,396 | -3.23% | 64.5% | 11,858 | 9,140 | 4.33% | 77.1% |
| San Policarpo | 12,258 | 9,048 | 73.8% | 9,970 | 6,262 | -3.61% | 62.8% | 11,565 | 7,509 | 3.70% | 64.9% | |
| Sulat | 12,357 | 10,372 | 83.9% | 12,738 | 8,603 | -1.85% | 67.5% | 14,010 | 9,171 | 1.29% | 65.5% | |
| Taft | 14,545 | 9,878 | 67.9% | 13,449 | 7,775 | -2.37% | 57.8% | 16,613 | 11,870 | 8.83% | 71.5% | |
| Province | 320,63 | 234,807 | 73.2% | 329,33 | 201,507 | -1.52% | 61.2% | 362,32 | 240,331 | 3.59% | 66.3% | |

Short/Medium-term target: 1998 and 2004

Growth rates between 1990 and 1995 in terms of the profile of urban population to total population by municipality were basically adopted. However, for those municipalities having drastic changes of growth rates between the two census periods (1990 - 1995 and 1980 - 1990), the average growth rates between 1980

and 1995 were employed. These municipalities are Arteche, Gipolos, Guiuan, Quinapondan, Salcedo and Taft.

In addition, some modifications were made as follows:

- Municipalities of Balangkayan, Llorente and San Julian; Population in 1995 was fixed for short/medium-term to avoid negative growth.
- Municipalities of Borongan and Oras; Population in 1995 was fixed for short/medium-term considering higher urban population, although negative growth rates were experienced between 1990 and 1995.
- Long-term target: 2010

For the long-term projection, the adopted share of urban/rural population in 2004 may be applied for the municipal population in 2010, assuming that the share of urban/rural population in the medium-term period will not drastically change.

Under the above assumptions, the provincial average share of urban population for the year 2010 was arrived at 36.3%, higher than the figure in 1995 (33.7%). Table 8.3.6 presents the projected urban and rural population. The growth rates and shares on rural population were calculated using the estimated rural population.

Table 8.3.6 Population Projection by Urban and Rural Area:1998, 2004 and 2010

| Municipality | 1998 | | | | 2004 | | | | 2010 | | | |
|-------------------|----------------|-----------------|-------------|--------------|----------------|-----------------|--------------|--------------|----------------|-----------------|--------------|--------------|
| | Total | Urban/ Rural | G.R. (%) | Share (%) | Total | Urban/ Rural | G.R. (%) | Share (%) | Total | Urban/ Rural | G.R. (%) | Share (%) |
| Urban Area | | | | | | | | | | | | |
| Arteche | 12,961 | 4,632 | 1.02% | 36.1% | 13,846 | 4,978 | 1.03% | 36.0% | 14,713 | 5,290 | 1.02% | 36.0% |
| Balangiga | 11,602 | 5,979 | 2.83% | 51.5% | 12,653 | 7,058 | 2.83% | 55.8% | 13,683 | 7,633 | 1.31% | 55.8% |
| Balangkayan | 9,255 | 2,985 | 0.00% | 32.3% | 10,104 | 2,985 | 0.00% | 29.5% | 10,936 | 3,231 | 1.33% | 29.5% |
| Borongan | 50,129 | 20,078 | 0.00% | 40.1% | 53,244 | 20,078 | 0.00% | 37.7% | 56,298 | 21,230 | 0.93% | 37.7% |
| Can-Avid | 16,579 | 5,674 | 3.78% | 34.2% | 18,294 | 7,037 | 3.78% | 38.2% | 19,974 | 7,738 | 1.48% | 38.7% |
| Dolores | 35,483 | 11,134 | 5.71% | 31.4% | 38,016 | 15,536 | 5.71% | 40.9% | 40,499 | 16,551 | 1.06% | 40.9% |
| Gen. Macarthur | 10,176 | 4,388 | 0.21% | 43.1% | 10,459 | 4,444 | 0.21% | 42.5% | 10,737 | 4,562 | 0.41% | 42.5% |
| Giporlos | 9,739 | 5,163 | 0.97% | 53.1% | 9,088 | 5,474 | 0.96% | 60.2% | 8,450 | 5,090 | - | 60.2% |
| Guiuan | 35,978 | 9,862 | 0.52% | 27.4% | 37,088 | 10,176 | 0.52% | 27.4% | 38,176 | 10,475 | 0.48% | 27.4% |
| Hernani | 8,453 | 2,211 | 1.35% | 26.2% | 9,285 | 2,694 | 1.35% | 29.0% | 10,100 | 2,930 | 1.41% | 29.0% |
| Jipapad | 6,554 | 3,402 | 2.98% | 51.9% | 7,249 | 4,059 | 2.99% | 56.0% | 7,930 | 4,440 | 1.51% | 56.0% |
| Lawaan | 10,357 | 5,212 | 5.47% | 50.3% | 11,680 | 7,176 | 5.47% | 61.4% | 12,977 | 7,973 | 1.77% | 61.4% |
| Llorente | 15,349 | 6,478 | 0.00% | 42.2% | 13,838 | 6,478 | 0.00% | 46.8% | 12,358 | 5,785 | - | 46.8% |
| Maslog | 3,812 | 1,163 | 2.75% | 30.5% | 4,185 | 1,359 | 2.76% | 32.7% | 4,551 | 1,489 | 1.41% | 32.7% |
| Maydolong | 12,707 | 5,374 | 2.76% | 42.3% | 13,764 | 6,325 | 2.75% | 46.0% | 14,800 | 6,801 | 1.22% | 46.0% |
| Mercedes | 5,790 | 1,335 | 4.80% | 23.1% | 6,453 | 1,768 | 4.79% | 27.4% | 7,102 | 1,946 | 1.61% | 27.4% |
| Oras | 33,023 | 8,665 | 0.00% | 26.2% | 36,141 | 8,665 | 0.00% | 24.0% | 39,196 | 9,397 | 1.36% | 24.0% |
| Quinapondan | 13,186 | 4,547 | 3.85% | 34.5% | 14,321 | 5,705 | 3.85% | 39.8% | 15,433 | 6,148 | 1.25% | 39.8% |
| Salcedo | 15,839 | 3,053 | 0.57% | 19.3% | 15,448 | 3,159 | 0.57% | 20.4% | 15,065 | 3,081 | - | 20.5% |
| San Julian | 11,985 | 2,718 | 0.00% | 22.7% | 12,251 | 2,718 | 0.00% | 22.2% | 12,512 | 2,776 | 0.35% | 22.2% |
| San Policarpo | 12,087 | 4,280 | 1.81% | 35.4% | 13,179 | 4,766 | 1.81% | 36.2% | 14,249 | 5,153 | 1.31% | 36.2% |
| Sulat | 14,426 | 5,318 | 3.20% | 36.9% | 15,297 | 6,422 | 3.19% | 42.0% | 16,150 | 6,780 | 0.91% | 42.0% |
| Taft | 17,648 | 4,758 | 0.11% | 27.0% | 19,814 | 4,789 | 0.11% | 24.2% | 21,936 | 5,302 | 1.71% | 24.2% |
| Province | 373,118 | 128,455 | 1.74 | 34.4% | 395,697 | 143,909 | 1.91% | 36.4% | 417,825 | 151,881 | 0.89% | 36.3% |
| Rural Area | | | | | | | | | | | | |
| Arteche | 12,961 | 8,279 | 1.16% | 63.9% | 13,846 | 8,868 | 1.15% | 64.0% | 14,713 | 9,423 | 1.02% | 64.0% |
| Balangiga | 11,602 | 5,632 | 0.14% | 48.5% | 12,653 | 5,595 | -0.11% | 44.2% | 13,683 | 6,050 | 1.31% | 44.2% |
| Balangkayan | 9,255 | 6,270 | 2.26% | 67.7% | 10,104 | 7,119 | 2.14% | 70.5% | 10,936 | 7,705 | 1.33% | 70.5% |
| Borongan | 50,129 | 30,051 | 1.71% | 59.9% | 53,244 | 33,166 | 1.66% | 62.3% | 56,298 | 35,068 | 0.93% | 62.3% |
| Can-Avid | 16,579 | 10,905 | 0.69% | 65.8% | 18,294 | 11,207 | 0.46% | 61.3% | 19,974 | 12,236 | 1.47% | 61.3% |
| Dolores | 35,483 | 24,349 | - | 68.6% | 38,016 | 22,480 | -1.32% | 59.1% | 40,499 | 23,948 | 1.06% | 59.1% |
| Gen. Macarthur | 10,176 | 5,788 | 0.62% | 56.9% | 10,459 | 6,015 | 0.64% | 57.5% | 10,737 | 6,175 | 0.44% | 57.5% |
| Giporlos | 9,739 | 4,571 | - | 46.9% | 9,088 | 3,614 | -3.84% | 39.8% | 8,450 | 3,360 | - | 39.8% |
| Guiuan | 35,978 | 26,116 | 0.49% | 72.6% | 37,088 | 26,912 | 0.50% | 72.6% | 38,176 | 27,701 | 0.48% | 72.6% |
| Hernani | 8,453 | 6,242 | 1.04% | 73.8% | 9,285 | 6,591 | 0.91% | 71.0% | 10,100 | 7,170 | 1.41% | 71.0% |
| Jipapad | 6,554 | 3,152 | 0.48% | 48.1% | 7,249 | 3,190 | 0.20% | 44.0% | 7,930 | 3,490 | 1.51% | 44.0% |
| Lawaan | 10,357 | 5,145 | - | 49.7% | 11,680 | 4,504 | -2.12% | 38.6% | 12,977 | 5,004 | 1.77% | 38.6% |
| Llorente | 15,349 | 8,871 | - | 57.8% | 13,838 | 7,360 | -3.06% | 53.2% | 12,358 | 6,573 | - | 53.2% |
| Maslog | 3,812 | 2,649 | 1.12% | 69.5% | 4,185 | 2,816 | 1.02% | 67.3% | 4,551 | 3,062 | 1.41% | 67.3% |
| Maydolong | 12,707 | 7,333 | 0.39% | 57.2% | 13,764 | 7,439 | 0.24% | 54.0% | 14,800 | 7,999 | 1.22% | 54.0% |
| Mercedes | 5,790 | 4,455 | 1.09% | 76.9% | 6,453 | 4,685 | 0.84% | 72.6% | 7,102 | 5,156 | 1.61% | 72.6% |
| Oras | 33,023 | 24,358 | 2.13% | 73.8% | 36,141 | 27,476 | 2.03% | 76.0% | 39,196 | 29,799 | 1.36% | 76.0% |
| Quinapondan | 13,186 | 8,639 | 0.21% | 65.5% | 14,321 | 8,616 | -0.04% | 60.2% | 15,433 | 9,285 | 1.25% | 60.2% |
| Salcedo | 15,839 | 12,786 | - | 80.7% | 15,448 | 12,289 | -0.66% | 79.6% | 15,065 | 11,984 | - | 79.6% |
| San Julian | 11,985 | 9,267 | 0.46% | 77.3% | 12,251 | 9,533 | 0.47% | 77.8% | 12,512 | 9,736 | 0.35% | 77.8% |
| San Policarpo | 12,087 | 7,807 | 1.31% | 64.6% | 13,179 | 8,413 | 1.25% | 63.8% | 14,249 | 9,096 | 1.31% | 63.8% |
| Sulat | 14,426 | 9,108 | - | 63.1% | 15,297 | 8,875 | -0.43% | 58.0% | 16,150 | 9,370 | 0.91% | 58.0% |
| Taft | 17,648 | 12,890 | 2.79% | 73.0% | 19,814 | 15,025 | 2.59% | 75.8% | 21,936 | 16,634 | 1.71% | 75.8% |
| Province | 373,118 | 244,663 | 0.60 | 65.6% | 395,697 | 251,788 | 0.48% | 63.6% | 417,825 | 266,024 | 0.92% | 63.6% |

Table 8.3.7 Projected Number of Households by Urban and Rural Area by Municipality by Target Year

| Name of Municipality | Household Size | | | Number of Households | | | | | | | | | | | | | | | |
|----------------------|----------------|-------|-------|----------------------|--------|--------|--------|--------|--------|--------|--------|--------|--------|--------|---------|-------|-------|-------|--|
| | 1995 | | | 1995 | | | | 1998 | | | | 2004 | | | | 2010 | | | |
| | Urban | Rural | Total | Urban | Rural | Total | Urban | Rural | Total | Urban | Rural | Total | Urban | Rural | Total | Urban | Rural | Total | |
| Arctche | 5.24 | 5.32 | 5.29 | 867 | 1,503 | 2,370 | 894 | 1,556 | 2,450 | 950 | 1,667 | 2,617 | 1,323 | 2,356 | 3,679 | | | | |
| Balanga | 5.29 | 5.53 | 5.41 | 1,038 | 1,015 | 2,053 | 1,129 | 1,018 | 2,147 | 1,334 | 1,012 | 2,346 | 1,908 | 1,513 | 3,421 | | | | |
| Balangbayan | 5.19 | 5.31 | 5.27 | 575 | 1,104 | 1,679 | 575 | 1,181 | 1,756 | 575 | 1,341 | 1,916 | 808 | 1,926 | 2,734 | | | | |
| Borongan (Capital) | 5.22 | 5.00 | 5.09 | 3,846 | 5,707 | 9,553 | 3,846 | 6,010 | 9,856 | 3,846 | 6,633 | 10,479 | 5,308 | 8,767 | 14,075 | | | | |
| Can-avid | 5.83 | 5.56 | 5.64 | 871 | 1,921 | 2,792 | 973 | 1,961 | 2,934 | 1,216 | 2,016 | 3,232 | 1,935 | 3,059 | 4,994 | | | | |
| Dolores | 5.65 | 5.64 | 5.64 | 1,668 | 4,405 | 6,073 | 1,971 | 4,317 | 6,288 | 2,750 | 3,986 | 6,736 | 4,138 | 5,987 | 10,125 | | | | |
| General Macarthur | 5.46 | 5.64 | 5.56 | 799 | 1,008 | 1,807 | 804 | 1,026 | 1,830 | 814 | 1,066 | 1,880 | 1,141 | 1,544 | 2,685 | | | | |
| Giporlos | 5.26 | 5.38 | 5.32 | 955 | 934 | 1,889 | 983 | 850 | 1,833 | 1,041 | 672 | 1,713 | 1,273 | 840 | 2,113 | | | | |
| Guiuan | 5.25 | 4.94 | 5.02 | 1,850 | 5,208 | 7,058 | 1,878 | 5,287 | 7,165 | 1,938 | 5,448 | 7,386 | 2,619 | 6,925 | 9,544 | | | | |
| Hernani | 5.82 | 6.08 | 6.02 | 344 | 995 | 1,339 | 380 | 1,027 | 1,407 | 463 | 1,084 | 1,547 | 733 | 1,793 | 2,526 | | | | |
| Jipapad | 6.31 | 5.50 | 5.88 | 494 | 565 | 1,059 | 539 | 573 | 1,112 | 643 | 580 | 1,223 | 1,110 | 873 | 1,983 | | | | |
| Lawaan | 6.21 | 5.61 | 5.87 | 715 | 942 | 1,657 | 839 | 917 | 1,756 | 1,156 | 803 | 1,959 | 1,993 | 1,251 | 3,244 | | | | |
| Llorente | 4.82 | 4.85 | 4.84 | 1,344 | 1,976 | 3,320 | 1,344 | 1,829 | 3,173 | 1,344 | 1,518 | 2,862 | 1,446 | 1,643 | 3,089 | | | | |
| Maslog | 5.61 | 5.14 | 5.27 | 191 | 498 | 689 | 207 | 515 | 722 | 244 | 548 | 792 | 372 | 766 | 1,138 | | | | |
| Maydolong | 5.37 | 6.09 | 5.78 | 922 | 1,190 | 2,112 | 1,001 | 1,204 | 2,204 | 1,178 | 1,222 | 2,400 | 1,700 | 2,000 | 3,700 | | | | |
| Mercedes | 6.74 | 6.02 | 6.16 | 172 | 716 | 888 | 198 | 740 | 938 | 262 | 778 | 1,040 | 487 | 1,289 | 1,776 | | | | |
| Oras | 5.63 | 5.51 | 5.54 | 1,538 | 4,154 | 5,692 | 1,539 | 4,421 | 5,960 | 1,539 | 4,987 | 6,526 | 2,349 | 7,450 | 9,799 | | | | |
| Quinapondan | 7.09 | 5.92 | 6.25 | 573 | 1,450 | 2,023 | 641 | 1,459 | 2,100 | 805 | 1,455 | 2,260 | 1,537 | 2,321 | 3,858 | | | | |
| Salcedo | 5.08 | 4.89 | 4.93 | 591 | 2,663 | 3,254 | 601 | 2,615 | 3,216 | 622 | 2,513 | 3,135 | 770 | 2,996 | 3,766 | | | | |
| San Julian | 4.90 | 4.96 | 4.94 | 555 | 1,843 | 2,398 | 555 | 1,868 | 2,423 | 555 | 1,922 | 2,477 | 694 | 2,434 | 3,128 | | | | |
| San Policarpo | 5.10 | 5.28 | 5.21 | 796 | 1,422 | 2,218 | 839 | 1,479 | 2,318 | 935 | 1,593 | 2,528 | 1,288 | 2,274 | 3,562 | | | | |
| Sulat | 5.09 | 5.21 | 5.17 | 951 | 1,759 | 2,710 | 1,045 | 1,748 | 2,793 | 1,262 | 1,703 | 2,965 | 1,695 | 2,343 | 4,038 | | | | |
| Taft | 5.53 | 5.68 | 5.64 | 858 | 2,088 | 2,946 | 860 | 2,269 | 3,129 | 866 | 2,645 | 3,511 | 1,326 | 4,159 | 5,485 | | | | |
| Provincial Total | 5.42 | 5.33 | 5.36 | 22,513 | 45,066 | 67,579 | 23,641 | 45,870 | 69,511 | 26,338 | 47,192 | 73,530 | 37,953 | 66,509 | 104,462 | | | | |

8.3.2 School Enrollment Projection

Table 8.3.8 Projected School Enrollment by Municipality by Target Year

| Name of Municipality | 1998 | | | | 2004 | | | | 2010 | | | | | | | |
|----------------------|-----------------------|------------------|--------------------|--------------------|-----------------------|------------------|--------------------|--------------------|-----------------------|------------------|--------------------|--------------------|-------------------------------|--------------------|-------------------------------|--------------------|
| | School Age Population | Total Enrollment | | Participation Rate | School Age Population | Total Enrollment | | Participation Rate | School Age Population | Total Enrollment | | Participation Rate | Public Sch. Enrollment Number | Participation Rate | Public Sch. Enrollment Number | Participation Rate |
| | | Number | Participation Rate | | | Number | Participation Rate | | | Number | Participation Rate | | | | | |
| Aritche | 3,613 | 3,424 | 95 | 3,860 | 3,667 | 95 | 3,667 | 95 | 4,102 | 3,897 | 95 | 3,897 | 95 | 3,897 | 95 | |
| Balanga | 3,124 | 2,678 | 86 | 3,407 | 3,066 | 90 | 2,896 | 85 | 3,684 | 3,500 | 95 | 3,316 | 90 | 3,316 | 90 | |
| Balangkavan | 2,423 | 2,061 | 85 | 2,645 | 2,381 | 90 | 2,381 | 90 | 2,863 | 2,720 | 95 | 2,720 | 95 | 2,720 | 95 | |
| Borongan (Capital) | 13,512 | 14,754 | 109 | 14,352 | 14,352 | 100 | 13,634 | 95 | 15,175 | 14,416 | 95 | 13,658 | 90 | 13,658 | 90 | |
| Can-avid | 4,643 | 3,731 | 80 | 5,123 | 4,355 | 85 | 4,355 | 85 | 5,593 | 5,034 | 90 | 5,034 | 90 | 5,034 | 90 | |
| Dalores | 9,936 | 9,336 | 94 | 10,645 | 10,113 | 95 | 9,581 | 90 | 11,340 | 10,773 | 95 | 10,206 | 90 | 10,206 | 90 | |
| General Macarthur | 2,898 | 3,219 | 111 | 2,979 | 2,979 | 100 | 2,830 | 95 | 3,058 | 2,905 | 95 | 2,752 | 90 | 2,752 | 90 | |
| Gpoptos | 2,659 | 2,809 | 106 | 2,481 | 2,481 | 100 | 2,357 | 95 | 2,307 | 2,192 | 95 | 2,076 | 90 | 2,076 | 90 | |
| Guyan | 9,780 | 9,720 | 100 | 10,051 | 10,051 | 100 | 9,348 | 95 | 10,346 | 9,829 | 95 | 9,311 | 90 | 9,311 | 90 | |
| Hernani | 2,321 | 2,121 | 91 | 2,549 | 2,422 | 95 | 2,422 | 95 | 2,773 | 2,634 | 95 | 2,634 | 95 | 2,634 | 95 | |
| Jipapad | 1,951 | 1,242 | 64 | 2,158 | 1,511 | 70 | 1,403 | 65 | 2,361 | 1,771 | 75 | 1,653 | 70 | 1,653 | 70 | |
| Lawaan | 2,742 | 2,680 | 98 | 3,092 | 2,937 | 95 | 2,783 | 90 | 3,435 | 3,263 | 95 | 3,092 | 90 | 3,092 | 90 | |
| Lorente | 4,176 | 4,350 | 104 | 3,765 | 3,765 | 100 | 3,577 | 95 | 3,362 | 3,194 | 95 | 3,026 | 90 | 3,026 | 90 | |
| Maslog | 1,071 | 698 | 65 | 1,176 | 823 | 70 | 823 | 70 | 1,279 | 959 | 75 | 959 | 75 | 959 | 75 | |
| Maydolong | 3,467 | 6,680 | 193 | 3,755 | 3,755 | 100 | 3,755 | 100 | 4,038 | 4,038 | 100 | 4,038 | 100 | 4,038 | 100 | |
| Mercedes | 1,458 | 1,549 | 106 | 1,625 | 1,625 | 100 | 1,625 | 100 | 1,788 | 1,788 | 100 | 1,788 | 100 | 1,788 | 100 | |
| Oras | 9,045 | 8,301 | 92 | 9,399 | 9,404 | 95 | 8,909 | 90 | 10,736 | 10,199 | 95 | 9,662 | 90 | 9,662 | 90 | |
| Quimpondan | 3,580 | 2,772 | 77 | 3,888 | 3,110 | 80 | 3,110 | 80 | 4,190 | 3,562 | 85 | 3,562 | 85 | 3,562 | 85 | |
| Salcedo | 4,445 | 4,703 | 106 | 4,335 | 4,335 | 100 | 4,335 | 100 | 4,228 | 4,228 | 100 | 4,228 | 100 | 4,228 | 100 | |
| San Julian | 3,054 | 3,101 | 102 | 3,122 | 3,122 | 100 | 2,966 | 95 | 3,189 | 3,189 | 100 | 3,090 | 95 | 3,090 | 95 | |
| San Policampo | 3,459 | 2,458 | 71 | 3,772 | 3,206 | 85 | 3,018 | 80 | 4,078 | 3,670 | 90 | 3,466 | 85 | 3,466 | 85 | |
| Sujat | 3,653 | 3,127 | 86 | 3,874 | 3,487 | 90 | 3,193 | 85 | 4,090 | 3,886 | 95 | 3,681 | 90 | 3,681 | 90 | |
| Taft | 4,751 | 4,322 | 91 | 5,334 | 5,067 | 95 | 5,067 | 95 | 5,905 | 5,610 | 95 | 5,610 | 95 | 5,610 | 95 | |
| Provincial Total | 101,731 | 99,836 | 98 | 107,887 | 102,014 | 95 | 98,335 | 91 | 113,920 | 107,257 | 94 | 103,399 | 91 | 103,399 | 91 | |

8.3.3 Projection on the Number of Public Utilities

Table 8.3.9 Projected Number of Public Utilities by Municipality by Target Year

| Name of Municipality | Type | 1998 | 2004 | | 2010 | |
|----------------------|----------------------|-------------------------|-----------------------|-------|-----------------------|-------|
| | | No. of Public Utilities | Proposed Construction | Total | Proposed Construction | Total |
| Arteche | Public Market | 1 | | 1 | | 1 |
| | Bus/Jeepney Terminal | 1 | | 1 | | 1 |
| | Parks/Playground | | | | | |
| | Total | 2 | | 2 | | 2 |
| Balangiga | Public Market | | 1 | 1 | | 1 |
| | Bus/Jeepney Terminal | | | | | |
| | Parks/Playground | | | | | |
| | Total | | 1 | 1 | | 1 |
| Balangkayan | Public Market | | 1 | 1 | | 1 |
| | Bus/Jeepney Terminal | | | | | |
| | Parks/Playground | | | | | |
| | Total | | 1 | 1 | | 1 |
| Borongan (Capital) | Public Market | 1 | | 1 | | 1 |
| | Bus/Jeepney Terminal | 1 | | 1 | | 1 |
| | Parks/Playground | 2 | | 2 | | 2 |
| | Total | 4 | | 4 | | 4 |
| Can-avid | Public Market | 1 | | 1 | | 1 |
| | Bus/Jeepney Terminal | | | | | |
| | Parks/Playground | 1 | | 1 | | 1 |
| | Total | 2 | | 2 | | 2 |
| Dolores | Public Market | 2 | | 2 | | 2 |
| | Bus/Jeepney Terminal | 1 | | 1 | | 1 |
| | Parks/Playground | 2 | | 2 | | 2 |
| | Total | 5 | | 5 | | 5 |
| General MacArthur | Public Market | 2 | | 2 | | 2 |
| | Bus/Jeepney Terminal | | | | | |
| | Parks/Playground | 1 | | 1 | | 1 |
| | Total | 3 | | 3 | | 3 |
| Giporlos | Public Market | 1 | 1 | 2 | | 2 |
| | Bus/Jeepney Terminal | | | | | |
| | Parks/Playground | 1 | | 1 | | 1 |
| | Total | 2 | 1 | 3 | | 3 |
| Guiuan | Public Market | 2 | | 2 | | 2 |
| | Bus/Jeepney Terminal | 1 | | 1 | | 1 |
| | Parks/Playground | 1 | | 1 | | 1 |
| | Total | 4 | | 4 | | 4 |
| Hervani | Public Market | 1 | | 1 | | 1 |
| | Bus/Jeepney Terminal | | | | | |
| | Parks/Playground | | | | | |
| | Total | 1 | | 1 | | 1 |
| Jipapad | Public Market | | | | | |
| | Bus/Jeepney Terminal | | | | | |
| | Parks/Playground | 1 | | 1 | | 1 |
| | Total | 1 | | 1 | | 1 |
| Lawaan | Public Market | 1 | | 1 | | 1 |
| | Bus/Jeepney Terminal | | | | | |
| | Parks/Playground | | | | | |
| | Total | 1 | | 1 | | 1 |

Table 8.3.9 Projected Number of Public Utilities by Municipality by Target Year (Cont'd)

| Name of Municipality | Type | 1998 | 2004 | | 2010 | |
|----------------------|----------------------|-------------------------|-----------------------|-------|-----------------------|-------|
| | | No. of Public Utilities | Proposed Construction | Total | Proposed Construction | Total |
| Llorente | Public Market | 1 | | 1 | | 1 |
| | Bus/Jeepney Terminal | 1 | | 1 | | 1 |
| | Parks/Playground | 1 | | 1 | | 1 |
| | Total | 3 | | 3 | | 3 |
| Maslog | Public Market | | | | | |
| | Bus/Jeepney Terminal | | | | | |
| | Parks/Playground | | | | | |
| | Total | | | | | |
| Maydong | Public Market | 1 | | 1 | | 1 |
| | Bus/Jeepney Terminal | | | | | |
| | Parks/Playground | 1 | | 1 | | 1 |
| | Total | 2 | | 2 | | 2 |
| Mercedes | Public Market | 1 | | 1 | | 1 |
| | Bus/Jeepney Terminal | | | | | |
| | Parks/Playground | | | | | |
| | Total | 1 | | 1 | | 1 |
| Oras | Public Market | 2 | 1 | 3 | | 3 |
| | Bus/Jeepney Terminal | 1 | | 1 | | 1 |
| | Parks/Playground | 1 | | 1 | | 1 |
| | Total | 4 | 1 | 5 | | 5 |
| Quinapondan | Public Market | 1 | 1 | 2 | | 2 |
| | Bus/Jeepney Terminal | | | | | |
| | Parks/Playground | 1 | | 1 | | 1 |
| | Total | 2 | 1 | 3 | | 3 |
| Salcedo | Public Market | 1 | 1 | 2 | | 2 |
| | Bus/Jeepney Terminal | | | | | |
| | Parks/Playground | | | | | |
| | Total | 1 | 1 | 2 | | 2 |
| San Julian | Public Market | 1 | | 1 | | 1 |
| | Bus/Jeepney Terminal | | | | | |
| | Parks/Playground | 1 | | 1 | | 1 |
| | Total | 2 | | 2 | | 2 |
| San Policarpo | Public Market | 1 | | 1 | | 1 |
| | Bus/Jeepney Terminal | 1 | | 1 | | 1 |
| | Parks/Playground | | | | | |
| | Total | 2 | | 2 | | 2 |
| Sulat | Public Market | 1 | | 1 | | 1 |
| | Bus/Jeepney Terminal | | | | | |
| | Parks/Playground | 1 | | 1 | | 1 |
| | Total | 2 | | 2 | | 2 |
| Taft | Public Market | 1 | 1 | 2 | | 2 |
| | Bus/Jeepney Terminal | | | | | |
| | Parks/Playground | | | | | |
| | Total | 1 | 1 | 2 | | 2 |
| Provincial Total | Public Market | 23 | 7 | 30 | | 30 |
| | Bus/Jeepney Terminal | 7 | | 7 | | 7 |
| | Parks/Playground | 15 | | 15 | | 15 |
| | Total | 45 | 7 | 52 | | 52 |

8.4 Types of Facilities and Implementation Criteria

8.4.1 Water Supply

(1) Urban water supply

With regard to development/expansion of urban water supply by municipality, existing conditions, future requirements and planned/on-going projects were reviewed in preparation of this PW4SP. Potential water source for future development was also evaluated in Chapter 7, taking into account the possibility to utilize untapped spring sources. Location of urban area of respective municipalities/city was referred to Figure 3.4.1 in Chapter 3. Table 8.4.1 presents basic figures on the existing service coverage, water sources and future requirements.

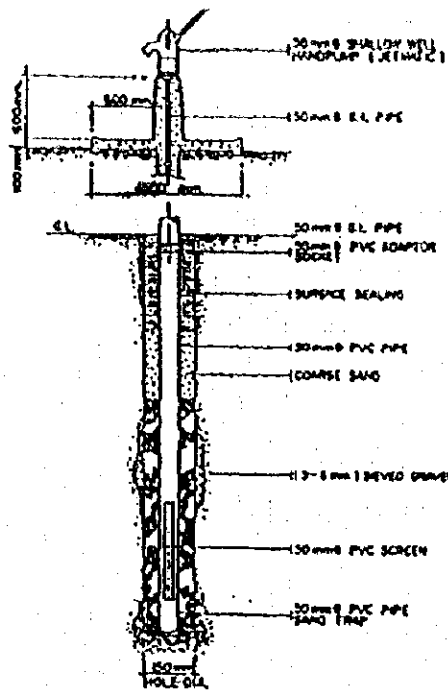
Table 8.4.1 Existing Condition and Future Requirements of Urban Water Supply Development by Municipality

| Name of Municipality | Existing Condition (1998) | | | | | Phase I (2004) | | | | | Phase II (2010) | | | | | | | |
|----------------------|---------------------------|---------------------------------------|-------------------------|--|-----------------------|-------------------------|------------------------------------|-------------------|------|-------------------------------------|-------------------|------|-------------------------|------------------------|-------------------|------|---|---|
| | Urban Population (1998) | No. of Level III and Operating Bodies | Pop. Served by Level-II | Pop. Served by Level-III System and Others | Total Pop. Served (%) | Urban Population (2004) | Additional Pop. Served by Level-II | Total Pop. Served | % | Additional Pop. Served by Level-III | Total Pop. Served | % | Urban Population (2010) | Additional Pop. Served | Total Pop. Served | % | Newly Developed/Additional Water Source | Total Water Source Required (m ³ /d) |
| Ampel | 4,682 | None | 2,680 | 2,680 | 57% | 4,978 | 687 | 687 | 14% | None | 687 | 14% | 5,290 | 4,339 | 4,339 | 82% | 900 | 700 |
| Balangan | 5,970 | None | 3,638 | 3,638 | 61% | 7,038 | 974 | 974 | 14% | None | 974 | 14% | 7,613 | 6,277 | 6,277 | 83% | 900 | 1,100 |
| Banjarkayan | 2,985 | 1 (Mun) | 1,725 | 2,981 | 100% | 2,985 | 1,256 | 2,981 | 100% | None | 2,981 | 100% | 3,231 | 1,813 | 3,069 | 95% | 200 | 400 |
| Borong (Candi) | 20,078 | (WD, Asp) | 9,352 | 15,200 | 75% | 20,078 | 6,348 | 15,700 | 78% | None | 15,700 | 78% | 21,230 | 13,821 | 20,169 | 95% | 1,800 | 2,700 |
| Candrad | 5,674 | None | 3,368 | 3,368 | 59% | 7,087 | 978 | 978 | 14% | None | 978 | 14% | 7,738 | 6,373 | 7,351 | 95% | 900 | 1,100 |
| Dolores | 11,134 | None | 6,787 | 6,787 | 61% | 15,336 | 2,143 | 2,143 | 14% | None | 2,143 | 14% | 16,531 | 13,580 | 13,723 | 83% | 1,800 | 2,100 |
| General | | | | | | | | | | | | | | | | | | |
| Masambur | 4,388 | None | 4,157 | 4,157 | 95% | 4,444 | 444 | 4,157 | 94% | None | 4,157 | 94% | 4,562 | 4,334 | 4,334 | 95% | 600 | 600 |
| Gunong | 5,168 | None | 3,143 | 3,143 | 61% | 5,474 | 755 | 755 | 14% | None | 755 | 14% | 5,090 | 4,041 | 4,836 | 95% | 600 | 700 |
| Gutan | 9,082 | None | 6,094 | 6,094 | 67% | 10,176 | 1,404 | 1,404 | 14% | None | 1,404 | 14% | 10,475 | 8,547 | 9,951 | 95% | 1,200 | 1,400 |
| Herawan | 2,211 | None | 1,323 | 1,323 | 60% | 2,694 | 372 | 372 | 14% | None | 372 | 14% | 2,990 | 2,412 | 2,784 | 93% | 400 | 500 |
| Jipad | 3,407 | None | 2,500 | 2,500 | 73% | 4,039 | 360 | 360 | 9% | None | 360 | 9% | 4,440 | 4,440 | 4,440 | 100% | 500 | 600 |
| Lawan | 3,212 | None | 3,408 | 3,408 | 106% | 7,176 | 990 | 990 | 14% | None | 990 | 14% | 7,973 | 6,584 | 7,574 | 95% | 600 | 1,100 |
| Lilovate | 6,478 | (WD) | 30 | 30 | 0% | 6,478 | 894 | 1,430 | 22% | None | 1,430 | 22% | 5,783 | 4,096 | 5,496 | 95% | 600 | 800 |
| Mablog | 1,143 | None | 337 | 337 | 29% | 1,369 | 189 | 189 | 14% | None | 189 | 14% | 1,489 | 1,276 | 1,415 | 95% | 200 | 300 |
| Maymang | 5,374 | (WD) | 1,150 | 1,150 | 21% | 6,323 | 244 | 244 | 4% | None | 244 | 4% | 6,401 | 5,311 | 5,641 | 88% | 600 | 800 |
| Mercedes | 1,335 | None | 7,489 | 7,489 | 56% | 1,768 | 244 | 244 | 14% | None | 244 | 14% | 1,948 | 1,805 | 1,849 | 93% | 200 | 300 |
| Omas | 8,665 | None | 3,543 | 3,543 | 41% | 8,665 | 787 | 787 | 9% | None | 787 | 9% | 6,397 | 8,927 | 8,927 | 100% | 1,200 | 1,200 |
| Quinsopdan | 4,547 | None | 3,543 | 3,543 | 78% | 5,705 | 787 | 787 | 14% | None | 787 | 14% | 6,148 | 5,054 | 5,841 | 95% | 600 | 800 |
| Salcedo | 3,031 | (Mun) | 60 | 1,518 | 50% | 3,139 | 436 | 1,894 | 60% | None | 1,894 | 60% | 3,081 | 1,033 | 2,927 | 95% | 200 | 300 |
| San Julian | 2,718 | None | 1,690 | 1,690 | 62% | 2,718 | 375 | 375 | 14% | None | 375 | 14% | 2,776 | 2,262 | 2,637 | 95% | 300 | 400 |
| San Policarpo | 4,280 | None | 2,889 | 2,889 | 68% | 4,766 | 658 | 658 | 14% | None | 658 | 14% | 5,131 | 4,237 | 4,895 | 95% | 600 | 700 |
| Sulal | 5,318 | (WD) | 1,041 | 4,767 | 90% | 6,422 | 3,726 | 4,767 | 74% | None | 4,767 | 74% | 6,780 | 2,715 | 6,041 | 89% | 400 | 500 |
| Tal | 4,758 | None | 3,753 | 3,753 | 79% | 4,789 | 489 | 4,789 | 100% | None | 4,789 | 100% | 5,302 | 5,037 | 5,037 | 95% | 700 | 700 |
| Provincial Total | 128,455 | | 14,444 | 72,408 | 56% | 143,909 | 12,446 | 26,890 | 19% | | 26,890 | 19% | 151,801 | 117,321 | 144,211 | 95% | 16,000 | 32,400 |

(Note) WD: Water District, Prov: Province, Mun: Municipality, Ave: Association

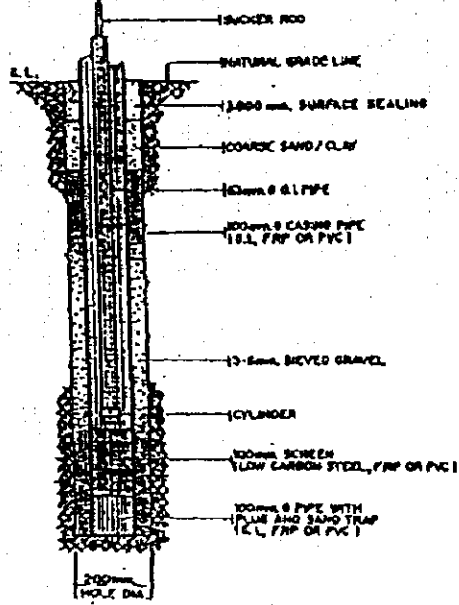
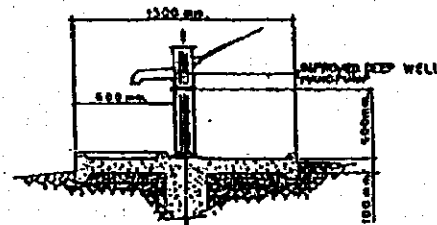
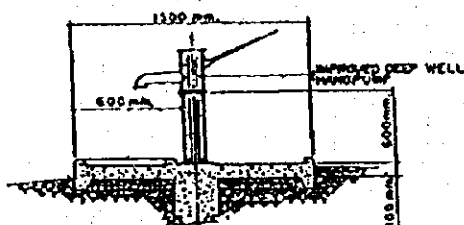
Unit consumption: 100 lpd

Additional population served in 2010 includes the served population that will be absorbed by Level III system.

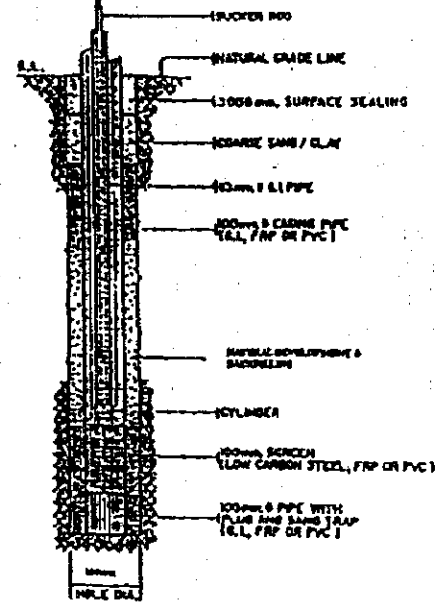


OPEN HOLE DRILLING & GRAVEL PACK METHOD

SHALLOW WELLS



OPEN HOLE DRILLING & GRAVEL PACK METHOD

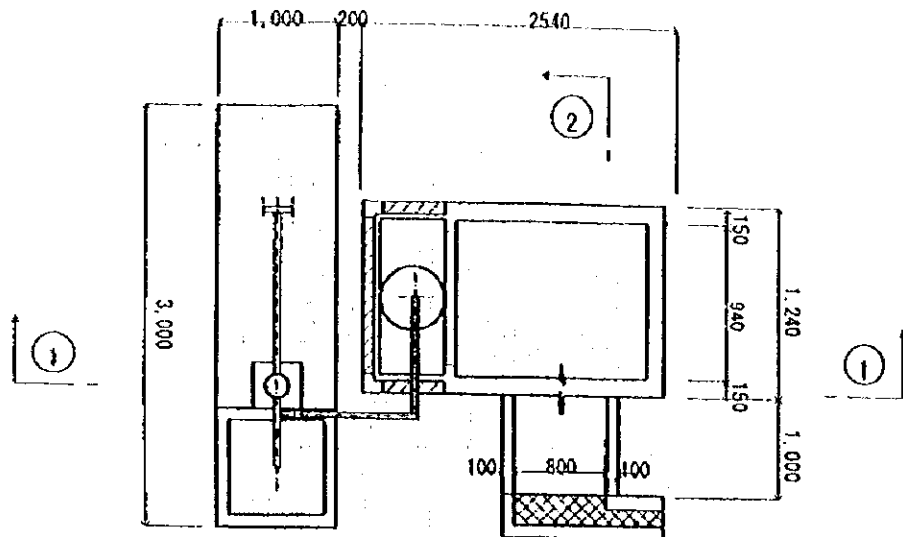


OPEN HOLE DRILLING & NATURAL GRAVEL PACK METHOD

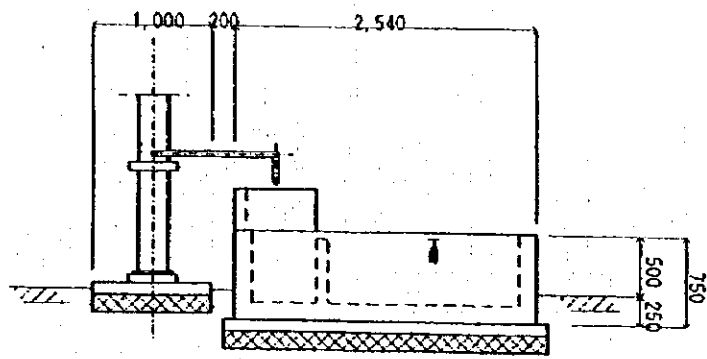
DEEP WELLS

FIGURE 8.4.1

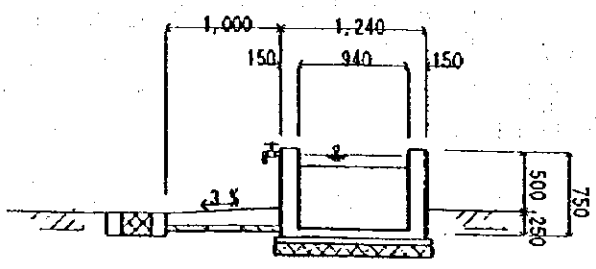
TYPICAL STRUCTURE OF LEVEL I WELL FACILITY



PLAN $S = 1/30$



Section ① — ① $S = 1/30$



Section ② — ② $S = 1/30$

Figure 8.4.2(a) Iron Removal Facility

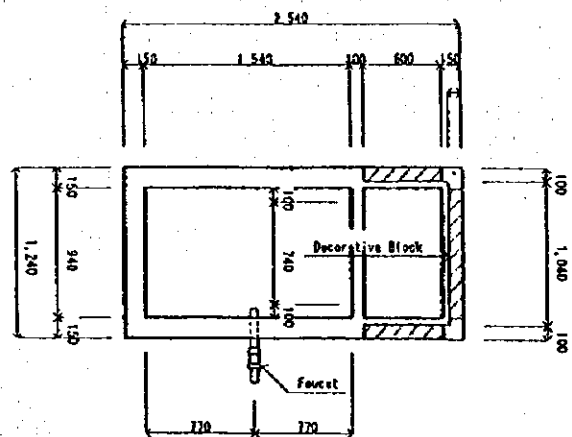
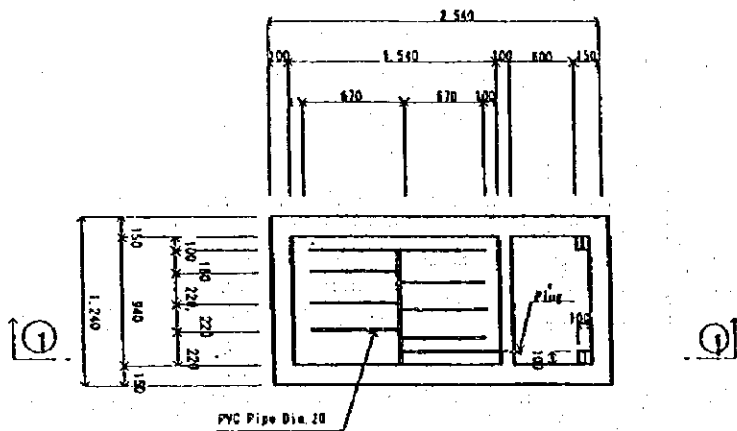
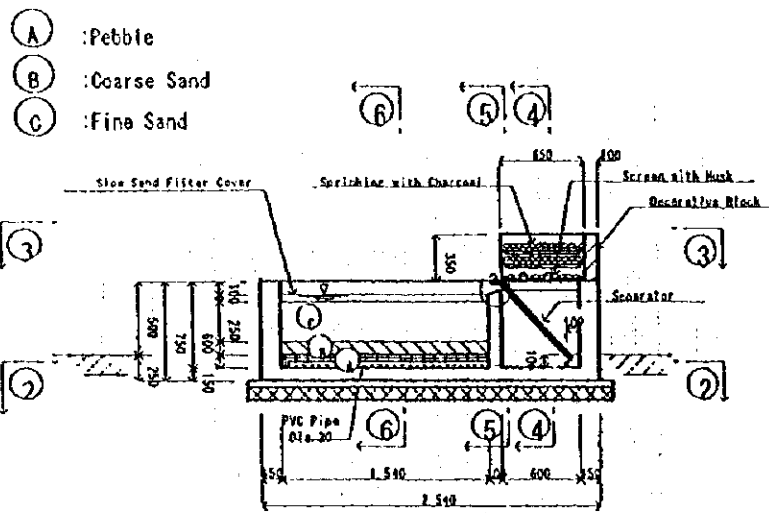
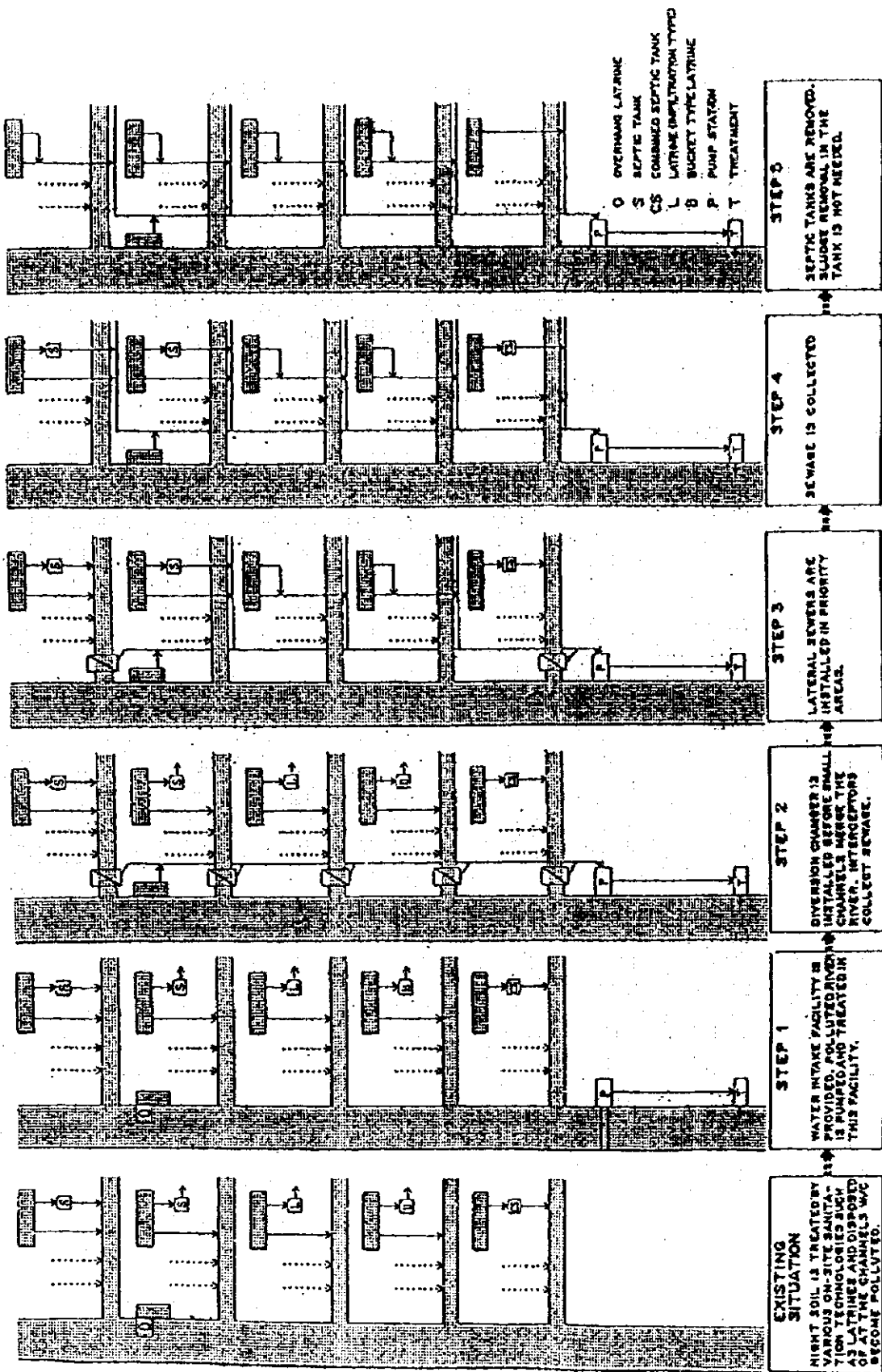


Figure 8.4.2(b) Iron Removal Facility

Figure 8.4.3 STAGED IMPROVEMENT IN SEWAGE COLLECTION METHOD



8.5 Service Coverage by Target Year

8.5.1 Water Supply

(1) Population to be served by Level I facilities under ADB-assisted project

With regard to the development of rural water supply by municipality, the ADB-assisted Rural Water Supply and Sanitation Sector Project (RW3SP) plays a major role in the medium-term plan of PW4SP. To set up the target, additional population to be served under this project shall be given due consideration.

Physical targets:

Physical targets for rural water supply are construction of shallow well (71 units), deep well (118 units) and developed spring (58 units) in the whole province. A total of 247 units were allocated by the province to the recipient municipalities as shown in Table 8.5.1.

Table 8.5.1 Proposed Number of Facility to be Constructed under ADB-Assisted RW3SP (1999-2001)

| Municipality | Class | Shallow Well | Deep Well | Developed Spring | Total |
|-------------------------|-------|--------------|------------|------------------|------------|
| Arteche | 5th | 12 | 0 | 1 | 13 |
| Balangiga | 5th | 1 | 2 | 3 | 6 |
| Balangkayan | 5th | 1 | 4 | 1 | 6 |
| Borongan | 2nd | 0 | 15 | 14 | 29 |
| Can-Avid | 5th | 2 | 3 | 1 | 6 |
| Dolores | 4th | 4 | 11 | 2 | 17 |
| Gen. Macarthur | 5th | 0 | 1 | 3 | 4 |
| Giporlos | 5th | 1 | 7 | 1 | 9 |
| Guiuan | 4th | 2 | 7 | 0 | 9 |
| Hernani | 6th | 0 | 7 | 0 | 7 |
| Jipapad | 5th | 0 | 4 | 2 | 6 |
| Lawaan | 5th | 1 | 2 | 2 | 5 |
| Llorente | 4th | 6 | 5 | 2 | 13 |
| Maslog | 5th | 0 | 2 | 2 | 4 |
| Maydolong | 4th | 3 | 0 | 0 | 3 |
| Mercedes | 6th | 0 | 3 | 1 | 4 |
| Oras | 4th | 2 | 7 | 6 | 15 |
| Quinapondan | 5th | 8 | 2 | 5 | 15 |
| Salcedo | 5th | 0 | 8 | 2 | 10 |
| San Julian | 5th | 3 | 12 | 2 | 17 |
| San Policarpo | 5th | 18 | 3 | 2 | 23 |
| Sulat | 5th | 3 | 6 | 3 | 12 |
| Taft | 5th | 4 | 7 | 3 | 14 |
| Provincial Total | | 71 | 118 | 58 | 247 |

Current status

Implementation of the project was originally scheduled to commence in 1997 with 5 years implementation period (1997-2001). However, the construction of the facilities has

not yet started as of now due to delay of fund release. In addition, delivery of the required materials has not completed for the 1st year allocation. Thus, the above physical targets under the ADB-assisted project may be a major part of the requirements in the medium-term plan (year 2000 - 2004).

Additional population to be served:

The additional population to be served under the ADB-assisted project is assumed at 22,230 persons based on the total number of physical targets (247 units) applying served population of 90 persons per one Level I facility (serving 6 persons/III x 15 IIIs/unit).

(2) Improvement of water supply facilities by on-going AUSAID-assisted project

Aside from the ADB-assisted project, Eastern Samar is also a recipient of on-going Australian assistance for International Development (AUSAID)-assisted Municipal Solar Infrastructure Project (MSIP). Under the said project, service level of existing water supply in 19 municipalities will be improved. The following is the outline of the project:

Purpose of the project and physical target

The project aims to support delivery of health and other basic services to remote areas not connected to existing and planned power supplies in seven Visayas and Mindanao provinces using photovoltaic or solar electric technology. MSIP targets the installation of approximately 1,003 photovoltaic packaged systems in target barangays including the provision of photovoltaic pumping systems and reticulated supplies. The other target output is strengthening the capacity of LGUs as well as community organizations through the conduct of training aimed at improving the skills, knowledge and organizational and management capabilities of municipal functionaries.

In Eastern Samar, the potable water supply component will involve the construction of 166 water pumping systems with overhead storage tanks ranging from 10 m³ to 40 m³ as shown in Table 8.5.2.

Target for completion in December 2000, the MSIP is being implemented by the DILG through the British Petroleum Solar Australia Pty Ltd.

Table 8.5.2 Water Supply Projects under MSIP

| Municipality | Number of Water System | | | Total |
|-------------------------|--------------------------|--------------------------|--------------------------|------------|
| | 10 m ³ - Tank | 20 m ³ - Tank | 40 m ³ - Tank | |
| Artoche | | 1 | | 1 |
| Balangiga | 1 | 1 | 1 | 3 |
| Balangkayan | 4 | 4 | | 8 |
| Borongan | 5 | 6 | 3 | 14 |
| Can-avid | | | | |
| Dolores | 1 | 8 | 7 | 16 |
| Gen. Macarthur | 13 | | | 13 |
| Giporlos | 1 | | | 1 |
| Guituan | 8 | 18 | 5 | 31 |
| Hernani | | | | |
| Jipapad | 1 | 2 | 1 | 4 |
| Lawaan | | | | |
| Llorente | 7 | 3 | 1 | 11 |
| Maslog | | | | |
| Maydolong | 4 | 4 | | 9 |
| Mercedes | 5 | 2 | | 7 |
| Oras | 2 | 6 | 2 | 10 |
| Quinapondan | 2 | 4 | | 6 |
| Salcedo | 10 | 5 | 5 | 20 |
| San Julian | | 1 | 1 | 2 |
| San Policarpio | 2 | 1 | | 3 |
| Sulat | 2 | 1 | | 3 |
| Taft | 1 | 2 | 1 | 4 |
| Provincial Total | 69 | 70 | 27 | 166 |

(3) Population to be served by target year

Phase I

For urban area, the additional service coverage was estimated by Level III service. For rural area, the population to be served under the ADB-assisted project is the target of rural water supply. The additional service coverage by Level II system was not considered, since Level II systems with untapped springs were not included in the ADB-assisted project.

Phase II

For urban area, the population served by Level I and II facilities in base year was considered to be absorbed by Level III service aside from the additional service coverage to be estimated by the sector target. For rural area, all existing facilities in Phase I were assumed to be utilized through the future.

The population to be served by target year is exhibited in Table 8.5.2 and Table 8.5.3.

Table 8-5.2 Population to be Served in Phase I (Water Supply)

| Name of Municipality | Area | Population Served in the Base Year | | | | Phase I Coverage (2004) | | | | | | | | | | | | |
|----------------------|-------|------------------------------------|----------|---------|------------------|-------------------------|-----------|----------|------------------------------------|--------|-----------|----------|---------|-------|--|--|--|-------|
| | | Population Served in the Base Year | | | Total Population | Service Coverage | | | Additional Population to be Served | | | | | | | | | |
| | | Level III | Level II | Level I | | Total | Level III | Level II | Level I | Total | Level III | Level II | Level I | Total | | | | |
| Anteche | Urban | | | 2,680 | 4,978 | 687 | | 2,680 | 3,367 | | | | | 687 | | | | 687 |
| | Rural | | | 2,806 | 8,868 | | | 3,976 | 3,976 | | | | | | | | | 1,170 |
| | Total | | | 5,486 | 13,846 | 687 | | 6,656 | 7,343 | | | | | 687 | | | | 1,857 |
| Balangiga | Urban | | | 3,638 | 7,058 | 974 | | 3,638 | 4,612 | | | | | 974 | | | | 974 |
| | Rural | | | 2,050 | 5,595 | | | 2,590 | 3,945 | | | | | | | | | 540 |
| | Total | | | 5,688 | 12,653 | 974 | | 6,228 | 8,557 | | | | | 974 | | | | 1,514 |
| Balangkayan | Urban | 1,256 | 1,710 | 15 | 2,981 | 1,256 | 1,710 | 15 | 2,981 | | | | | | | | | |
| | Rural | | | 2,550 | 7,119 | | | 3,090 | 3,090 | | | | | | | | | 540 |
| | Total | 1,256 | 1,710 | 2,565 | 10,104 | 1,256 | 1,710 | 3,105 | 6,071 | | | | | | | | | 540 |
| Borongon (Capital) | Urban | 6,348 | | 9,352 | 15,700 | 6,348 | | 9,352 | 15,700 | | | | | | | | | |
| | Rural | 319 | 1,333 | 15,569 | 35,166 | 319 | 1,333 | 18,179 | 19,831 | | | | | | | | | 2,610 |
| | Total | 6,667 | 1,333 | 24,921 | 53,244 | 6,667 | 1,333 | 27,531 | 35,531 | | | | | | | | | 2,610 |
| Can-avid | Urban | | | 3,368 | 7,087 | 978 | | 3,368 | 4,346 | | | | | 978 | | | | 978 |
| | Rural | | | 3,033 | 4,729 | | | 1,696 | 3,573 | | | | | | | | | 540 |
| | Total | | | 6,401 | 8,097 | 978 | | 1,696 | 6,941 | 9,615 | | | | 978 | | | | 1,518 |
| Dolores | Urban | | | 6,137 | 15,536 | 2,143 | | 650 | 6,137 | 8,930 | | | | 2,143 | | | | 2,143 |
| | Rural | | | 2,369 | 22,480 | | | 2,369 | 8,769 | | | | | | | | | |
| | Total | | | 13,376 | 38,016 | 2,143 | | 3,019 | 14,906 | 20,668 | | | | 2,143 | | | | 1,530 |
| General MacArthur | Urban | | | 4,157 | 4,444 | | | 4,157 | 4,157 | | | | | | | | | |
| | Rural | | | 564 | 6,015 | | | 564 | 360 | 924 | | | | | | | | 360 |
| | Total | | | 4,721 | 10,459 | | | 4,721 | 4,517 | 5,081 | | | | | | | | 360 |
| Giporlos | Urban | | | 3,143 | 5,474 | 755 | | 3,143 | 3,898 | | | | | 755 | | | | 755 |
| | Rural | | | 705 | 3,614 | | | 943 | 1,515 | 2,458 | | | | | | | | 810 |
| | Total | | | 3,848 | 9,088 | 755 | | 4,086 | 5,356 | 5,356 | | | | 755 | | | | 1,565 |
| Guituan | Urban | | | 6,094 | 10,176 | 1,404 | | 6,094 | 7,498 | | | | | 1,404 | | | | 1,404 |
| | Rural | | | 14,669 | 26,912 | | | 2,620 | 15,479 | 18,099 | | | | | | | | 810 |
| | Total | | | 20,763 | 37,088 | 1,404 | | 8,714 | 22,977 | 26,597 | | | | 1,404 | | | | 2,214 |
| Hemani | Urban | | | 1,323 | 2,694 | 372 | | 1,323 | 1,695 | | | | | 372 | | | | 372 |
| | Rural | | | 2,501 | 6,591 | | | 304 | 3,131 | 3,435 | | | | | | | | 630 |
| | Total | | | 3,824 | 9,285 | 372 | | 1,627 | 4,826 | 6,970 | | | | 372 | | | | 1,002 |
| Jipapad | Urban | | | 2,500 | 4,059 | 560 | | 2,500 | 3,060 | | | | | 560 | | | | 560 |
| | Rural | | | | 3,190 | | | | 540 | 540 | | | | | | | | 540 |
| | Total | | | 2,500 | 7,249 | 560 | | 2,500 | 3,600 | 3,600 | | | | 560 | | | | 1,100 |
| Lawaan | Urban | | | 3,066 | 7,176 | 990 | | 3,066 | 4,398 | | | | | 990 | | | | 990 |
| | Rural | | | 1,010 | 4,504 | | | 1,010 | 3,524 | | | | | | | | | 450 |
| | Total | | | 4,076 | 11,680 | 990 | | 4,076 | 7,922 | 7,922 | | | | 990 | | | | 1,440 |

Table 8.5.2 Population to be Served in Phase I (Water Supply) Cont'd

| Name of Municipality | Area | Population Served in the Base Year | | | Phase I Coverage (2004) | | | | | | | | | | | |
|----------------------|-------|------------------------------------|----------|---------|-------------------------|------------------|------------------|----------|---------|------------------------------------|-----------|----------|---------|--------|-------|--|
| | | Level III | Level II | Level I | Total | Total Population | Service Coverage | | | Additional Population to be Served | | | | | | |
| | | | | | | | Level III | Level II | Level I | Total | Level III | Level II | Level I | Total | | |
| Lorente | Urban | 506 | 30 | 3,494 | 536 | 6,478 | 1,400 | 30 | 4,664 | 1,430 | 894 | | | 894 | | |
| | Rural | | 389 | 3,494 | 3,883 | 7,360 | | 389 | 4,664 | | | | | 1,170 | | |
| | Total | 506 | 419 | 3,494 | 4,419 | 13,838 | 1,400 | 419 | 4,664 | 6,483 | | | 894 | 1,170 | 2,064 | |
| Maslog | Urban | | 337 | | 337 | 1,369 | 189 | 337 | 526 | | | | | 360 | | |
| | Rural | | 231 | | 231 | 2,816 | 231 | 360 | 591 | | | | | 360 | | |
| | Total | | 568 | | 568 | 4,185 | 189 | 568 | 1,117 | | | 189 | | 360 | 549 | |
| Maydolong | Urban | 1,150 | 2,495 | 906 | 4,551 | 6,325 | 1,150 | 2,495 | 906 | 4,551 | | | | 270 | | |
| | Rural | 116 | 1,310 | 1,370 | 2,796 | 7,439 | 116 | 1,310 | 1,640 | 3,066 | | | | 270 | | |
| | Total | 1,266 | 3,805 | 2,276 | 7,347 | 13,764 | 1,266 | 3,805 | 2,546 | 7,617 | | | 244 | 270 | 270 | |
| Mercedes | Urban | | | 3,437 | 3,437 | 4,685 | | | 3,797 | 3,797 | | | | 360 | | |
| | Rural | | | 3,437 | 3,437 | 6,453 | 244 | | 3,797 | 4,041 | | | 244 | 360 | | |
| | Total | | | 7,489 | 7,489 | 8,665 | | | 7,489 | 7,489 | | | 244 | 360 | 604 | |
| Oras | Urban | 1,432 | 9,526 | 10,958 | 27,476 | | 1,432 | 10,876 | 12,308 | | | | | 1,350 | | |
| | Rural | 1,432 | 17,015 | 18,447 | 36,141 | | 1,432 | 18,365 | 19,797 | | | | | 1,350 | | |
| | Total | | 957 | 2,586 | 3,543 | 5,705 | 787 | 957 | 2,586 | 4,330 | | 787 | | 787 | | |
| Quinapondan | Urban | | 1,391 | 3,556 | 4,747 | 8,616 | | 1,391 | 4,706 | 6,097 | | | | 1,350 | | |
| | Rural | | 2,348 | 5,942 | 8,290 | 14,321 | 787 | 2,348 | 7,292 | 10,427 | | | | 1,350 | | |
| | Total | | 60 | 1,518 | 1,518 | 3,159 | 1,894 | 60 | 1,954 | 436 | | | | 436 | | |
| Salcedo | Urban | 1,458 | 10,058 | 10,424 | 12,289 | | 366 | 10,958 | 11,324 | | | | | 900 | | |
| | Rural | | 426 | 10,058 | 11,942 | 15,448 | 1,894 | 426 | 10,958 | 13,278 | | 436 | | 900 | | |
| | Total | | 1,690 | 1,690 | 2,718 | 375 | | 1,690 | 2,065 | 375 | | | | 375 | | |
| San Julian | Urban | 694 | 5,475 | 6,169 | 9,533 | | 694 | 7,005 | 7,699 | | | | | 1,530 | | |
| | Rural | 694 | 2,889 | 2,889 | 4,766 | 658 | 694 | 3,695 | 9,764 | 375 | | | | 1,530 | | |
| | Total | | 4,393 | 4,393 | 8,413 | | 658 | 2,889 | 3,547 | 658 | | | | 658 | | |
| San Policarpo | Urban | | 7,282 | 7,282 | 13,179 | | 658 | 9,552 | 10,010 | 658 | | | | 2,070 | | |
| | Rural | | 786 | 4,767 | 6,422 | 3,726 | 255 | 786 | 4,767 | | | | | 2,070 | | |
| | Total | 3,726 | 255 | 4,943 | 8,875 | | 703 | 5,320 | 6,023 | | | | | 1,080 | | |
| Sulat | Urban | | 958 | 5,026 | 9,710 | 15,297 | 3,726 | 958 | 6,106 | 10,790 | | | | 1,080 | | |
| | Rural | | 1,189 | 8,150 | 9,339 | 15,025 | | 1,189 | 9,410 | 10,599 | | | | 1,260 | | |
| | Total | | 1,189 | 11,903 | 13,092 | 19,814 | | 1,189 | 13,163 | 14,352 | | | | 1,260 | | |
| Tait | Urban | 1,444 | 6,836 | 65,572 | 86,852 | 143,909 | 26,890 | 6,836 | 65,572 | 99,297 | | | | 12,445 | | |
| | Rural | 435 | 19,899 | 106,685 | 127,019 | 251,788 | 435 | 19,899 | 128,915 | 149,249 | | | | 22,230 | | |
| | Total | 14,879 | 26,735 | 172,257 | 213,871 | 395,697 | 27,325 | 26,735 | 194,487 | 248,546 | | | | 22,230 | | |
| Provincial Total | | | | | | | | | | | | | | 34,675 | | |

Table 8.5.3 Population to be Served in Phase II (Water Supply)

| Name of Municipality | Area | Population Served in 2004 | | | | Phase II Coverage (2010) | | | | | | | | | | | | |
|----------------------|-------|---------------------------|----------|---------|------------------|--------------------------|-----------|----------|------------------------------------|-------|-----------|----------|---------|-------|--|--|-------|--------|
| | | Population Served in 2004 | | | Total Population | Service Coverage | | | Additional Population to be Served | | | | | | | | | |
| | | Level III | Level II | Level I | | Total | Level III | Level II | Level I | Total | Level III | Level II | Level I | Total | | | | |
| Arteche | Urban | 687 | | 2,680 | 3,367 | 5,290 | 5,026 | 4,339 | | | | | | | | | 4,339 | |
| | Rural | | | 3,976 | 3,976 | 9,423 | 8,763 | | | | | | | | | | | 4,787 |
| | Total | 687 | | 6,656 | 7,343 | 14,713 | 5,026 | 4,339 | | | | | | | | | | 9,126 |
| Balangiga | Urban | 974 | | 3,638 | 4,612 | 7,633 | 7,251 | 6,277 | | | | | | | | | | 6,277 |
| | Rural | | | 1,355 | 3,945 | 6,050 | | | | | | | | | | | | 1,682 |
| | Total | 974 | | 6,228 | 8,557 | 13,683 | 7,251 | 6,277 | | | | | | | | | | 7,959 |
| Balangakayan | Urban | 1,256 | | 1,710 | 2,966 | 3,421 | 3,069 | 1,813 | | | | | | | | | | 1,813 |
| | Rural | | | 3,090 | 3,090 | 7,705 | | | | | | | | | | | | 4,076 |
| | Total | 1,256 | | 4,750 | 6,056 | 11,126 | 3,069 | 1,813 | | | | | | | | | | 5,889 |
| Borongan (Capital) | Urban | 6,548 | | 9,352 | 15,700 | 21,230 | 20,169 | 13,821 | | | | | | | | | | 13,821 |
| | Rural | 319 | | 1,333 | 18,179 | 19,831 | 35,068 | 319 | | | | | | | | | | 12,782 |
| | Total | 6,667 | | 27,531 | 35,531 | 56,298 | 20,488 | 13,821 | | | | | | | | | | 26,603 |
| Can-avid | Urban | 978 | | 3,368 | 4,346 | 7,351 | | | | | | | | | | | | 6,373 |
| | Rural | | | 1,696 | 3,573 | 5,269 | | | | | | | | | | | | 6,110 |
| | Total | 978 | | 6,941 | 9,615 | 12,620 | 7,351 | 6,373 | | | | | | | | | | 12,483 |
| Dolores | Urban | 2,143 | | 650 | 6,137 | 8,930 | 16,551 | 15,723 | | | | | | | | | | 11,134 |
| | Rural | | | 2,369 | 8,769 | 11,138 | 23,948 | | | | | | | | | | | 13,580 |
| | Total | 2,143 | | 14,906 | 20,068 | 40,499 | 15,723 | 13,580 | | | | | | | | | | 24,714 |
| General MacArthur | Urban | | | 4,157 | 4,157 | 4,562 | 4,334 | 4,334 | | | | | | | | | | 4,334 |
| | Rural | | | 360 | 924 | 6,173 | | | | | | | | | | | | 4,819 |
| | Total | | | 4,517 | 5,081 | 10,737 | 4,334 | 4,334 | | | | | | | | | | 9,153 |
| Ciprieros | Urban | 755 | | 3,143 | 3,898 | 5,090 | 4,836 | 4,081 | | | | | | | | | | 4,081 |
| | Rural | | | 1,515 | 2,458 | 3,360 | | | | | | | | | | | | 667 |
| | Total | 755 | | 4,658 | 6,356 | 8,450 | 4,836 | 4,081 | | | | | | | | | | 4,748 |
| Guiuan | Urban | 1,404 | | 6,094 | 7,498 | 10,475 | 9,951 | 8,547 | | | | | | | | | | 8,547 |
| | Rural | | | 15,479 | 18,099 | 27,701 | | | | | | | | | | | | 7,663 |
| | Total | 1,404 | | 21,573 | 25,597 | 38,176 | 9,951 | 8,547 | | | | | | | | | | 16,210 |
| Hernani | Urban | 372 | | 1,323 | 1,695 | 2,930 | 2,784 | 2,412 | | | | | | | | | | 2,412 |
| | Rural | | | 304 | 3,435 | 7,170 | | | | | | | | | | | | 3,233 |
| | Total | 372 | | 4,454 | 5,130 | 10,100 | 2,784 | 2,412 | | | | | | | | | | 5,645 |
| Jipapad | Urban | 560 | | 2,500 | 3,060 | 4,440 | 4,218 | 3,658 | | | | | | | | | | 3,658 |
| | Rural | | | 540 | 540 | 3,490 | | | | | | | | | | | | 2,706 |
| | Total | 560 | | 3,040 | 3,600 | 7,930 | 4,218 | 3,658 | | | | | | | | | | 6,364 |
| Lawaan | Urban | 990 | | 3,066 | 4,398 | 7,973 | 7,574 | 6,584 | | | | | | | | | | 6,584 |
| | Rural | | | 1,010 | 2,514 | 5,004 | | | | | | | | | | | | 1,130 |
| | Total | 990 | | 4,076 | 6,912 | 12,977 | 7,574 | 6,584 | | | | | | | | | | 7,714 |

Table 8.5.3 Population to be Served in Phase II (Water Supply) Cont'd

| Name of Municipality | Area | Population Served in 2004 | | | | | | Phase II Coverage (2010) | | | | | |
|----------------------|-------|---------------------------|----------|---------|------------------|------------------|-----------|--------------------------|------------------------------------|---------|-----------|----------|---------|
| | | Population Served in 2004 | | | Total Population | Service Coverage | | | Additional Population to be Served | | | | |
| | | Level III | Level II | Level I | | Total | Level III | Level II | Level I | Total | Level III | Level II | Level I |
| Lorente | Urban | 1,400 | 30 | 4,664 | 1,430 | 5,785 | 5,496 | 389 | 5,724 | 5,496 | 4,096 | 1,060 | 4,096 |
| | Rural | 1,400 | 419 | 6,483 | 5,053 | 6,573 | 5,724 | 389 | 6,113 | 6,113 | 1,060 | 1,060 | 1,060 |
| | Total | 1,400 | 419 | 6,483 | 12,358 | 12,358 | 5,496 | 389 | 5,724 | 11,609 | 4,096 | 1,060 | 5,156 |
| Maslog | Urban | 189 | 337 | 360 | 526 | 1,489 | 1,415 | 231 | 2,617 | 2,617 | 2,257 | 2,257 | 2,257 |
| | Rural | 189 | 568 | 360 | 591 | 3,062 | 1,415 | 231 | 2,617 | 2,617 | 2,257 | 2,257 | 2,257 |
| | Total | 1,150 | 2,495 | 906 | 4,551 | 6,461 | 6,461 | 1,415 | 2,617 | 4,263 | 5,311 | 4,373 | 5,311 |
| Maydolong | Urban | 116 | 1,310 | 1,640 | 3,066 | 7,999 | 116 | 1,310 | 6,013 | 7,439 | 4,373 | 4,373 | 4,373 |
| | Rural | 1,266 | 3,805 | 2,546 | 7,617 | 14,800 | 6,577 | 1,310 | 6,013 | 13,900 | 5,311 | 4,373 | 9,684 |
| | Total | 244 | 3,797 | 4,041 | 7,102 | 1,849 | 8,927 | 8,927 | 2,713 | 26,281 | 36,640 | 15,405 | 24,332 |
| Mercedes | Urban | 787 | 957 | 2,386 | 4,330 | 6,148 | 5,841 | 1,391 | 7,244 | 8,635 | 5,054 | 2,538 | 5,054 |
| | Rural | 787 | 2,348 | 7,292 | 10,427 | 15,433 | 5,841 | 1,391 | 7,244 | 14,476 | 5,054 | 2,538 | 7,592 |
| | Total | 1,894 | 60 | 1,954 | 3,081 | 2,927 | 10,333 | 10,333 | 2,927 | 1,324 | 11,324 | 1,033 | 1,033 |
| Ortas | Urban | 366 | 10,958 | 11,324 | 11,324 | 11,984 | 2,927 | 366 | 10,958 | 11,324 | 1,033 | 1,033 | 1,033 |
| | Rural | 366 | 426 | 10,958 | 13,278 | 15,065 | 2,927 | 366 | 10,958 | 14,251 | 1,033 | 1,033 | 1,033 |
| | Total | 1,894 | 375 | 2,065 | 7,699 | 9,736 | 2,637 | 694 | 8,360 | 9,054 | 2,262 | 2,262 | 2,262 |
| Quinapondan | Urban | 694 | 7,005 | 9,764 | 12,512 | 2,637 | 694 | 8,360 | 11,691 | 2,262 | 1,355 | 1,355 | 1,355 |
| | Rural | 694 | 2,889 | 3,547 | 5,153 | 4,895 | 4,895 | 8,459 | 8,459 | 4,237 | 1,996 | 1,996 | 1,996 |
| | Total | 375 | 658 | 6,463 | 9,096 | 9,096 | 6,441 | 703 | 8,011 | 13,354 | 4,237 | 1,996 | 6,233 |
| Salcedo | Urban | 658 | 9,352 | 10,010 | 14,249 | 4,895 | 6,441 | 8,459 | 8,459 | 2,715 | 2,715 | 2,715 | 2,715 |
| | Rural | 658 | 786 | 4,767 | 6,780 | 6,441 | 703 | 8,011 | 8,714 | 2,691 | 2,691 | 2,691 | 2,691 |
| | Total | 3,726 | 255 | 6,023 | 9,370 | 6,441 | 703 | 8,011 | 15,155 | 2,715 | 2,691 | 5,406 | 5,406 |
| San Julian | Urban | 375 | 6106 | 10,790 | 16,150 | 6,441 | 703 | 8,011 | 15,155 | 2,715 | 2,691 | 5,406 | 5,406 |
| | Rural | 375 | 3,753 | 3,753 | 5,302 | 5,037 | 5,037 | 1,189 | 14,281 | 15,470 | 4,871 | 4,871 | 4,871 |
| | Total | 1,189 | 13,163 | 14,352 | 21,936 | 5,037 | 1,189 | 14,281 | 20,507 | 5,037 | 4,871 | 9,908 | 9,908 |
| San Policarpo | Urban | 26,890 | 6,836 | 65,572 | 99,298 | 151,801 | 144,212 | 144,212 | 144,212 | 117,322 | 117,322 | 117,322 | 117,322 |
| | Rural | 435 | 19,899 | 128,915 | 149,249 | 266,024 | 435 | 19,899 | 227,248 | 247,582 | 98,333 | 98,333 | 98,333 |
| | Total | 27,325 | 26,735 | 194,487 | 248,547 | 417,825 | 144,647 | 19,899 | 227,248 | 391,794 | 117,322 | 98,333 | 215,655 |

8.5.2 Sanitation

Table 8.5.4 Additional Number of Households to be Served in Phase I (Household Toilets)

| Name of Municipality | Area | No. of Household Served in the Based Year | | | | | Phase I Coverage (2004) | | | | | | | |
|----------------------|-------|---|------------|---------|-------|------------------|-------------------------|------------|---------|------------------------------------|------------|---------|-------|-------|
| | | Flush | Pour Flush | VIP/Dry | Total | Total No. of HHs | Household Coverage | | | Additional No. of HHs to be Served | | | | |
| | | | | | | | Flush | Pour Flush | VIP/Dry | Flush | Pour Flush | VIP/Dry | Total | |
| Arette | Urban | 1 | 360 | 361 | 722 | 950 | 121 | 647 | 40 | 808 | 120 | 287 | | 407 |
| | Rural | | 353 | 353 | 706 | 1,667 | | 885 | 249 | 1,134 | | 552 | | 552 |
| | Total | 1 | 713 | 714 | 706 | 2,617 | 121 | 1,532 | 289 | 1,942 | 120 | 819 | | 939 |
| Balangiga | Urban | | 682 | 92 | 774 | 1,334 | 170 | 907 | 57 | 1,134 | 170 | 225 | | 395 |
| | Rural | | 492 | 56 | 548 | 1,012 | | 537 | 151 | 688 | | 45 | | 140 |
| | Total | | 1,174 | 148 | 548 | 2,346 | 170 | 1,444 | 208 | 1,822 | 170 | 270 | 95 | 535 |
| Balangkayan | Urban | | 356 | 34 | 390 | 575 | 73 | 392 | 24 | 489 | 73 | 36 | | 109 |
| | Rural | | 581 | 77 | 658 | 1,341 | | 711 | 201 | 912 | | 130 | | 254 |
| | Total | | 937 | 111 | 658 | 1,916 | 73 | 1,103 | 225 | 1,401 | 73 | 166 | 124 | 363 |
| Borongan (Capital) | Urban | 335 | 1,025 | 1,599 | 2,959 | 3,846 | 490 | 2,616 | 163 | 3,269 | 155 | 1,591 | | 1,746 |
| | Rural | 152 | 1,555 | 3,347 | 5,054 | 6,633 | 152 | 3,790 | 1,112 | 5,054 | | 2,235 | | 2,235 |
| | Total | 487 | 2,580 | 4,946 | 5,054 | 10,479 | 642 | 6,406 | 1,275 | 8,323 | 155 | 3,826 | | 3,981 |
| Can-avid | Urban | | 592 | 108 | 700 | 1,216 | 155 | 827 | 52 | 1,034 | 155 | 235 | | 390 |
| | Rural | | 313 | 702 | 1,015 | 2,016 | | 1,069 | 302 | 1,371 | | 756 | | 756 |
| | Total | | 905 | 810 | 1,015 | 3,232 | 155 | 1,896 | 354 | 2,405 | 155 | 991 | | 1,146 |
| Dolores | Urban | 80 | 1,358 | 328 | 1,766 | 2,750 | 351 | 1,870 | 117 | 2,338 | 271 | 512 | | 783 |
| | Rural | 2 | 1,193 | 580 | 1,775 | 3,986 | 2 | 2,112 | 596 | 2,710 | | 919 | 16 | 935 |
| | Total | 82 | 2,551 | 908 | 1,775 | 6,736 | 353 | 3,982 | 713 | 5,048 | 271 | 1,431 | 16 | 1,718 |
| General MacArthur | Urban | | 345 | 79 | 424 | 814 | | 657 | 35 | 692 | | 312 | | 312 |
| | Rural | | 41 | 412 | 453 | 1,066 | | 565 | 160 | 725 | | 524 | | 524 |
| | Total | | 386 | 491 | 453 | 1,880 | | 1,222 | 195 | 1,417 | | 836 | | 836 |
| Giporlos | Urban | | 488 | 86 | 574 | 1,041 | 133 | 708 | 44 | 885 | 133 | 220 | | 353 |
| | Rural | | 282 | 28 | 310 | 672 | | 356 | 101 | 457 | | 74 | 73 | 147 |
| | Total | | 770 | 114 | 310 | 1,713 | 133 | 1,064 | 145 | 1,342 | 133 | 294 | 73 | 500 |
| Gutuan | Urban | 50 | 1,295 | 187 | 1,532 | 1,938 | 247 | 1,318 | 82 | 1,647 | 197 | 23 | | 220 |
| | Rural | | 1,810 | 394 | 2,204 | 5,448 | | 2,890 | 815 | 3,705 | | 1,080 | 421 | 1,501 |
| | Total | 50 | 3,105 | 581 | 2,204 | 7,386 | 247 | 4,208 | 897 | 5,352 | 197 | 1,103 | 421 | 1,721 |
| Hemani | Urban | 7 | 69 | 124 | 200 | 463 | 59 | 315 | 20 | 394 | 52 | 246 | | 298 |
| | Rural | 1 | 52 | 645 | 698 | 1,084 | 1 | 574 | 162 | 737 | | 522 | | 522 |
| | Total | 8 | 121 | 769 | 698 | 1,547 | 60 | 889 | 182 | 1,131 | 52 | 768 | | 820 |
| Jipapad | Urban | | 393 | 72 | 465 | 643 | 82 | 438 | 27 | 547 | 82 | 45 | | 127 |
| | Rural | | 151 | 120 | 271 | 580 | | 307 | 87 | 394 | | 156 | | 156 |
| | Total | | 544 | 192 | 271 | 1,223 | 82 | 745 | 114 | 941 | 82 | 201 | | 283 |
| Lawaan | Urban | | 387 | 25 | 412 | 1,156 | 147 | 787 | 49 | 983 | 147 | 400 | 24 | 571 |
| | Rural | | 484 | 50 | 534 | 803 | | 426 | 120 | 546 | | 70 | | 70 |
| | Total | | 871 | 75 | 534 | 1,959 | 147 | 1,213 | 169 | 1,529 | 147 | 400 | 94 | 641 |

Table 8.5.4 Additional Number of Households to be Served in Phase I (Household Toilets) Cont'd

| Name of Municipality | Area | No. of Household Served in the Based Year | | | | Total No. of HHs | Household Coverage | | | Additional No. of HHs to be Served | | | | |
|----------------------|-------|---|------------|---------|--------|------------------|--------------------|------------|---------|------------------------------------|-------|------------|---------|-------|
| | | Flush | Pour Flush | VIP/Dry | Total | | Flush | Pour Flush | VIP/Dry | Total | Flush | Pour Flush | VIP/Dry | Total |
| | | | | | | | | | | | | | | |
| Lorente | Urban | 53 | 828 | 63 | 944 | 1,344 | 171 | 914 | 57 | 1,142 | 118 | 86 | 204 | |
| | Rural | | 982 | 39 | 1,021 | 1,518 | | 805 | 227 | 1,032 | | | 188 | |
| | Total | 53 | 1,810 | 102 | 1,912 | 2,862 | 171 | 1,719 | 284 | 2,174 | 118 | 86 | 392 | |
| Maslog | Urban | | 120 | 17 | 137 | 244 | 31 | 166 | 10 | 207 | 31 | 46 | 77 | |
| | Rural | | 243 | 34 | 277 | 548 | | 291 | 82 | 373 | | | 48 | |
| | Total | | 363 | 51 | 414 | 792 | 31 | 457 | 92 | 580 | 31 | 46 | 125 | |
| Maydolong | Urban | 28 | 615 | 70 | 713 | 1,178 | 150 | 801 | 50 | 1,001 | 122 | 186 | 308 | |
| | Rural | 7 | 554 | 144 | 705 | 1,222 | 25 | 623 | 183 | 831 | 18 | 69 | 39 | |
| | Total | 35 | 1,169 | 214 | 1,383 | 2,400 | 175 | 1,424 | 233 | 1,832 | 140 | 255 | 39 | |
| Mercedes | Urban | | 84 | | 84 | 262 | 33 | 179 | 11 | 223 | 33 | 95 | 11 | |
| | Rural | | 396 | | 396 | 778 | | 413 | 116 | 529 | | 17 | 116 | |
| | Total | | 480 | | 480 | 1,040 | 33 | 592 | 127 | 752 | 33 | 112 | 127 | |
| Oras | Urban | | 795 | | 795 | 1,539 | | 1,243 | 65 | 1,308 | | 448 | 65 | |
| | Rural | | 2,166 | | 2,166 | 4,987 | | 2,645 | 746 | 3,391 | | 479 | 746 | |
| | Total | | 2,961 | | 2,961 | 6,526 | | 3,888 | 811 | 4,699 | | 927 | 811 | |
| Quinapondan | Urban | | 354 | | 354 | 805 | 103 | 547 | 34 | 684 | 103 | 193 | 34 | |
| | Rural | | 832 | | 832 | 1,455 | | 771 | 218 | 989 | | 218 | 218 | |
| | Total | | 1,186 | | 1,186 | 2,260 | 103 | 1,318 | 252 | 1,673 | 103 | 193 | 252 | |
| Salcedo | Urban | | 447 | | 447 | 622 | 79 | 424 | 26 | 529 | 79 | 26 | 26 | |
| | Rural | | 1,307 | | 1,307 | 2,513 | | 1,333 | 376 | 1,709 | | 26 | 376 | |
| | Total | | 1,754 | | 1,754 | 3,135 | 79 | 1,757 | 402 | 2,238 | 79 | 26 | 402 | |
| San Julian | Urban | 5 | 415 | | 420 | 555 | 71 | 377 | 24 | 472 | 66 | 24 | 90 | |
| | Rural | | 1,531 | | 1,531 | 1,922 | | 1,194 | 337 | 1,531 | | | 337 | |
| | Total | 5 | 1,946 | | 1,951 | 2,477 | 71 | 1,571 | 361 | 2,003 | 66 | | 427 | |
| San Policarpo | Urban | | 388 | 336 | 724 | 935 | 119 | 636 | 40 | 795 | 119 | 248 | 367 | |
| | Rural | | 886 | | 886 | 1,593 | | 845 | 238 | 1,083 | | 845 | 845 | |
| | Total | | 1,274 | 336 | 1,610 | 2,528 | 119 | 1,481 | 278 | 1,878 | 119 | 1,093 | 1,212 | |
| Sulat | Urban | | 674 | | 674 | 1,262 | 161 | 858 | 54 | 1,073 | 161 | 184 | 54 | |
| | Rural | | 1,310 | | 1,310 | 1,703 | | 1,022 | 288 | 1,310 | | 288 | 288 | |
| | Total | | 1,984 | | 1,984 | 2,965 | 161 | 1,880 | 342 | 2,383 | 161 | 184 | 342 | |
| Taft | Urban | 9 | 734 | 13 | 756 | 866 | 9 | 709 | 38 | 756 | | 25 | 25 | |
| | Rural | | 927 | 176 | 1,103 | 2,645 | | 1,403 | 396 | 1,799 | | 476 | 220 | |
| | Total | 9 | 1,661 | 189 | 1,850 | 3,511 | 9 | 2,112 | 434 | 2,555 | | 476 | 245 | |
| Provincial Total | Urban | 568 | 12,804 | 3,594 | 16,966 | 26,338 | 2,955 | 18,336 | 1,119 | 22,410 | 2,387 | 5,618 | 263 | |
| | Rural | 162 | 17,555 | 8,043 | 25,760 | 47,192 | 180 | 25,567 | 7,263 | 33,010 | 18 | 8,933 | 3,375 | |
| | Total | 730 | 30,359 | 11,637 | 42,726 | 73,530 | 3,135 | 43,903 | 8,382 | 55,420 | 2,405 | 14,551 | 3,638 | |

Table 8.5.5 Additional Number of Households to be Served in Phase II (Household Toilets)

| Name of Municipality | Area | No. households Served in 2004 | | | | | Phase II Coverage (2010) | | | | | | |
|----------------------|-------|-------------------------------|------------|---------|-------|------------------|--------------------------|--------------------|-------|--------|------------------------------------|---------|-------|
| | | Pour Flush | | VIP/Dry | Total | Total No. of HHs | | Household Coverage | | | Additional No. of HHs to be Served | | |
| | | Flush | Pour Flush | VIP/Dry | Total | Flush | Pour Flush | VIP/Dry | Total | Flush | Pour Flush | VIP/Dry | Total |
| Arette | Urban | 121 | 647 | 40 | 808 | 1,323 | 615 | 575 | 40 | 1,230 | 494 | | 494 |
| | Rural | | 885 | 249 | 1,134 | 2,356 | | 1,871 | 249 | 2,120 | | 986 | 986 |
| | Total | 121 | 1,532 | 289 | 1,942 | 3,679 | 615 | 2,446 | 289 | 3,350 | 494 | 986 | 1,480 |
| Balangiga | Urban | 170 | 907 | 57 | 1,134 | 1,908 | 887 | 830 | 57 | 1,774 | 717 | | 717 |
| | Rural | | 537 | 151 | 688 | 1,513 | | 1,211 | 151 | 1,362 | | 674 | 674 |
| | Total | 170 | 1,444 | 208 | 1,822 | 3,421 | 887 | 2,041 | 208 | 3,136 | 717 | 674 | 1,391 |
| Balangkayan | Urban | 73 | 392 | 24 | 489 | 808 | 376 | 351 | 24 | 751 | 303 | | 303 |
| | Rural | | 711 | 201 | 912 | 1,926 | | 1,532 | 201 | 1,733 | | 821 | 821 |
| | Total | 73 | 1,103 | 225 | 1,401 | 2,734 | 376 | 1,883 | 225 | 2,484 | 303 | 821 | 1,124 |
| Borongan (Capital) | Urban | 490 | 2,616 | 163 | 3,269 | 5,308 | 2,468 | 2,305 | 163 | 4,936 | 1,978 | | 1,978 |
| | Rural | 152 | 3,790 | 1,112 | 5,054 | 8,767 | 319 | 6,459 | 1,112 | 7,890 | 167 | 2,669 | 2,836 |
| | Total | 642 | 6,406 | 1,275 | 8,323 | 14,075 | 2,787 | 8,764 | 1,275 | 12,826 | 2,145 | 2,669 | 4,814 |
| Can-avid | Urban | 155 | 827 | 52 | 1,034 | 1,935 | 900 | 848 | 52 | 1,800 | 745 | 21 | 766 |
| | Rural | | 1,069 | 302 | 1,371 | 3,059 | | 2,451 | 302 | 2,753 | | 1,382 | 1,382 |
| | Total | 155 | 1,896 | 354 | 2,405 | 4,994 | 900 | 3,299 | 354 | 4,553 | 745 | 1,403 | 2,148 |
| Dolores | Urban | 351 | 1,870 | 117 | 2,338 | 4,138 | 1,924 | 1,807 | 117 | 3,848 | 1,573 | | 1,573 |
| | Rural | 2 | 2,112 | 596 | 2,710 | 5,987 | 2 | 4,790 | 596 | 5,388 | | 2,678 | 2,678 |
| | Total | 353 | 3,982 | 713 | 5,048 | 10,125 | 1,926 | 6,597 | 713 | 9,236 | 1,573 | 2,678 | 4,251 |
| General MacArthur | Urban | | 657 | 35 | 692 | 1,141 | 531 | 495 | 35 | 1,061 | 531 | | 531 |
| | Rural | | 565 | 160 | 725 | 1,544 | | 1,230 | 160 | 1,390 | | 665 | 665 |
| | Total | | 1,222 | 195 | 1,417 | 2,685 | 531 | 1,725 | 195 | 2,451 | 531 | 665 | 1,196 |
| Giporlos | Urban | 133 | 708 | 44 | 885 | 1,273 | 592 | 548 | 44 | 1,184 | 459 | | 459 |
| | Rural | | 356 | 101 | 457 | 840 | | 655 | 101 | 756 | | 299 | 299 |
| | Total | 133 | 1,064 | 145 | 1,342 | 2,113 | 592 | 1,203 | 145 | 1,940 | 459 | 299 | 758 |
| Guiuan | Urban | 247 | 1,318 | 82 | 1,647 | 2,619 | 1,218 | 1,136 | 82 | 2,436 | 971 | | 971 |
| | Rural | | 2,890 | 815 | 3,705 | 6,925 | | 5,418 | 815 | 6,233 | | 2,528 | 2,528 |
| | Total | 247 | 4,208 | 897 | 5,352 | 9,544 | 1,218 | 6,554 | 897 | 8,669 | 971 | 2,528 | 3,499 |
| Hemahn | Urban | 59 | 315 | 20 | 394 | 733 | 341 | 321 | 20 | 682 | 282 | | 282 |
| | Rural | | 574 | 162 | 737 | 1,793 | | 1,451 | 162 | 1,614 | | 877 | 877 |
| | Total | 60 | 889 | 182 | 1,131 | 2,526 | 342 | 1,772 | 182 | 2,296 | 282 | 883 | 1,165 |
| Jipapad | Urban | 82 | 438 | 27 | 547 | 1,110 | 516 | 489 | 27 | 1,032 | 434 | | 434 |
| | Rural | | 307 | 87 | 394 | 873 | | 699 | 87 | 786 | | 392 | 392 |
| | Total | 82 | 745 | 114 | 941 | 1,983 | 516 | 1,188 | 114 | 1,818 | 434 | 443 | 877 |
| Lawaan | Urban | 147 | 787 | 49 | 983 | 1,993 | 927 | 877 | 49 | 1,853 | 780 | | 780 |
| | Rural | | 426 | 120 | 546 | 1,251 | | 1,006 | 120 | 1,126 | | 580 | 580 |
| | Total | 147 | 1,213 | 169 | 1,529 | 3,244 | 927 | 1,883 | 169 | 2,979 | 780 | 670 | 1,450 |

Table 8.5.5 Additional Number of Households to be Served in Phase II (Household Toilets) (Cont'd)

| Name of Municipality | No. households Served in 2004 | | | | Phase II Coverage (2010) | | | | | | | |
|----------------------|-------------------------------|------------|---------|-------|--------------------------|------------|---------|------------------------------------|--------|------------|---------|--------|
| | Area | | Total | | Household Coverage | | | Additional No. of HHs to be Served | | | | |
| | Flush | Pour Flush | VIP/Dry | Total | Flush | Pour Flush | VIP/Dry | Total | Flush | Pour Flush | VIP/Dry | Total |
| Lorente | Urban | 171 | 914 | 57 | 1,142 | 673 | 615 | 57 | 1,345 | 502 | | 502 |
| | Rural | | 805 | 227 | 1,032 | | 1,252 | 227 | 1,479 | | 447 | 447 |
| | Total | 171 | 1,719 | 284 | 2,174 | 673 | 1,867 | 284 | 2,824 | 502 | 447 | 949 |
| Maslog | Urban | 31 | 166 | 10 | 207 | 173 | 163 | 10 | 346 | 142 | | 142 |
| | Rural | | 291 | 82 | 373 | | 607 | 82 | 689 | | 316 | 316 |
| | Total | 31 | 457 | 92 | 580 | 173 | 770 | 92 | 1,035 | 142 | 316 | 458 |
| Maydolong | Urban | 150 | 801 | 50 | 1,001 | 791 | 740 | 50 | 1,581 | 641 | | 641 |
| | Rural | 25 | 623 | 183 | 831 | 116 | 1,501 | 183 | 1,800 | 91 | 878 | 969 |
| | Total | 175 | 1,424 | 233 | 1,832 | 907 | 2,241 | 233 | 3,381 | 732 | 878 | 1,610 |
| Mercedes | Urban | 33 | 179 | 11 | 223 | 227 | 215 | 11 | 453 | 194 | 36 | 230 |
| | Rural | | 413 | 116 | 529 | | 1,044 | 116 | 1,160 | | 631 | 631 |
| | Total | 33 | 592 | 127 | 752 | 227 | 1,259 | 127 | 1,613 | 194 | 667 | 861 |
| Oras | Urban | | 1,243 | 65 | 1,308 | 1,093 | 1,027 | 65 | 2,185 | 1,093 | | 1,093 |
| | Rural | | 2,645 | 746 | 3,391 | 746 | 5,959 | 746 | 6,705 | | 3,314 | 3,314 |
| | Total | | 3,888 | 811 | 4,699 | 1,093 | 6,986 | 811 | 8,890 | 1,093 | 3,314 | 4,407 |
| Quinapondan | Urban | 103 | 547 | 34 | 684 | 715 | 680 | 34 | 1,429 | 612 | 133 | 745 |
| | Rural | | 771 | 218 | 989 | | 1,871 | 218 | 2,089 | | 1,100 | 1,100 |
| | Total | 103 | 1,318 | 252 | 1,673 | 715 | 2,551 | 252 | 3,518 | 612 | 1,233 | 1,845 |
| Salcedo | Urban | 79 | 424 | 26 | 529 | 358 | 332 | 26 | 716 | 279 | | 279 |
| | Rural | | 1,333 | 376 | 1,709 | | 2,320 | 376 | 2,696 | | 987 | 987 |
| | Total | 79 | 1,757 | 402 | 2,238 | 358 | 2,652 | 402 | 3,412 | 279 | 987 | 1,266 |
| San Julian | Urban | 71 | 377 | 24 | 472 | 323 | 298 | 24 | 645 | 252 | | 252 |
| | Rural | | 1,194 | 337 | 1,531 | | 1,854 | 337 | 2,191 | | 660 | 660 |
| | Total | 71 | 1,571 | 361 | 2,003 | 323 | 2,152 | 361 | 2,836 | 252 | 660 | 912 |
| San Policarpo | Urban | 119 | 636 | 40 | 795 | 599 | 559 | 40 | 1,198 | 480 | | 480 |
| | Rural | | 845 | 238 | 1,083 | | 1,809 | 238 | 2,047 | | 964 | 964 |
| | Total | 119 | 1,481 | 278 | 1,878 | 599 | 2,368 | 278 | 3,245 | 480 | 964 | 1,444 |
| Sulat | Urban | 161 | 858 | 54 | 1,073 | 788 | 734 | 54 | 1,576 | 627 | | 627 |
| | Rural | | 1,022 | 288 | 1,310 | | 1,821 | 288 | 2,109 | | 799 | 799 |
| | Total | 161 | 1,880 | 342 | 2,383 | 788 | 2,555 | 342 | 3,685 | 627 | 799 | 1,426 |
| Taft | Urban | 9 | 709 | 38 | 756 | 617 | 578 | 38 | 1,233 | 608 | | 608 |
| | Rural | | 1,403 | 396 | 1,799 | | 3,347 | 396 | 3,743 | | 1,944 | 1,944 |
| | Total | 9 | 2,112 | 434 | 2,555 | 617 | 3,925 | 434 | 4,976 | 608 | 1,944 | 2,552 |
| Provincial Total | Urban | 2,955 | 18,336 | 1,119 | 22,410 | 17,652 | 16,523 | 1,119 | 35,294 | 14,697 | 337 | 15,034 |
| | Rural | 180 | 25,567 | 7,263 | 33,010 | 438 | 52,158 | 7,263 | 59,859 | 258 | 26,591 | 26,849 |
| | Total | 3,135 | 43,903 | 8,382 | 55,420 | 18,090 | 68,681 | 8,382 | 95,153 | 14,955 | 26,928 | 41,883 |

Table 8.5.6 Additional Number of Public School Students to be Served in Phases I and II (School Toilets)

| Name of Municipality | Std. No. of Public School Student that can be Served in the Base Year (1998) | Projected No. of Public School Student in 2004 | Phase I Coverage (2004) | | Projected Number of Public School Students in 2010 | Phase II Coverage (2010) | |
|----------------------|--|--|---------------------------------|--|--|---------------------------------|---|
| | | | Public School Students Coverage | Additional No. of Public School Student to be Served | | Public School Students Coverage | Additional No. of Public School Students to be Served |
| Arteche | 400 | 3,667 | 1,947 | 1,547 | 3,897 | 3,507 | 1,560 |
| Balangiga | 2,280 | 2,896 | 2,896 | 616 | 3,316 | 2,984 | 88 |
| Balangkayan | 1,680 | 2,381 | 2,381 | 701 | 2,720 | 2,448 | 67 |
| Borongan (Capital) | 9,400 | 13,634 | 13,634 | 4,234 | 13,658 | 12,292 | |
| Can-avid | | 4,355 | 1,837 | 1,837 | 5,034 | 4,531 | 2,694 |
| Dolores | 880 | 9,581 | 4,921 | 4,041 | 10,206 | 9,185 | 4,264 |
| General MacArthur | 2,600 | 2,830 | 2,830 | 230 | 2,752 | 2,752 | |
| Giporlos | 2,668 | 2,357 | 2,357 | (311) | 2,076 | 2,076 | |
| Guluan | 3,520 | 9,548 | 7,547 | 4,027 | 9,311 | 8,380 | 833 |
| Hernani | 1,520 | 2,422 | 2,422 | 902 | 2,634 | 2,371 | |
| Jipapad | 320 | 1,403 | 912 | 592 | 1,653 | 1,488 | 576 |
| Lawaan | 2,200 | 2,783 | 2,783 | 583 | 3,092 | 2,783 | |
| Llorente | 2,600 | 3,577 | 3,577 | 977 | 3,026 | 3,026 | |
| Maslog | 698 | 823 | 823 | 125 | 959 | 863 | 40 |
| Maydolong | 5,440 | 3,755 | 3,755 | (1,685) | 4,038 | 3,634 | |
| Mercedes | 720 | 1,625 | 1,405 | 685 | 1,788 | 1,609 | 204 |
| Oras | 4,680 | 8,909 | 8,438 | 3,758 | 9,662 | 8,696 | 258 |
| Quinaipondan | 640 | 3,110 | 1,952 | 1,312 | 3,562 | 3,206 | 1,254 |
| Salcedo | 3,800 | 4,335 | 4,335 | 535 | 4,228 | 4,228 | |
| San Julian | 280 | 2,966 | 1,531 | 1,251 | 3,030 | 2,727 | 1,196 |
| San Policarpo | 1,720 | 3,018 | 2,993 | 1,273 | 3,466 | 3,119 | 126 |
| Sula: | 3,036 | 3,293 | 3,293 | 257 | 3,681 | 3,313 | 20 |
| Taft | 2,880 | 5,067 | 5,017 | 2,137 | 5,610 | 5,049 | 52 |
| Provincial Total | 53,962 | 98,335 | 83,586 | 29,624 | 103,399 | 94,267 | 13,212 |

Table 8.5.7 Additional Number of Public Utilities with Sanitary Toilets in Phase I and II

| Name of Municipality | Type | Coverage in Base Year (1998) | | | Phase I Coverage (2004) | | | Phase I Coverage (2010) | | |
|----------------------|----------------------|-----------------------------------|---------------------------------|-----------------------------------|--|---------------------------------|-----------------------------------|--|---------------------------------|-----------------------------------|
| | | No. of PU with Toilets Facilities | No. of PU with Sanitary Toilets | No. of PU with Toilets Facilities | Add'l. No. of Public Utilities with Sanitary Toilets | No. of PU with Sanitary Toilets | No. of PU with Toilets Facilities | Add'l. No. of Public Utilities with Sanitary Toilets | No. of PU with Sanitary Toilets | No. of PU with Toilets Facilities |
| | | | | | | | | | | |
| Arteche | Public Market | 1 | 1 | 1 | | | | | | |
| | Bus/Jeepney Terminal | | | | | | | | | |
| | Parks/Playground | 1 | 1 | 1 | | | | | | |
| | Total | 2 | 2 | 2 | | | | | | |
| Balangiga | Public Market | | | 1 | | | | | | |
| | Bus/Jeepney Terminal | | | | | | | | | |
| | Parks/Playground | | | | | | | | | |
| | Total | | | 1 | | | | | | |
| Balangkayan | Public Market | | | | | | | | | |
| | Bus/Jeepney Terminal | | | | | | | | | |
| | Parks/Playground | | | 1 | | | | | | |
| | Total | | | 1 | | | | | | |
| Borongan (Capital) | Public Market | 1 | 1 | 1 | | | | | | |
| | Bus/Jeepney Terminal | 1 | 1 | 1 | | | | | | |
| | Parks/Playground | 2 | 2 | 2 | | | | | | |
| | Total | 4 | 4 | 4 | | | | | | |
| Can-avid | Public Market | 1 | 1 | 1 | | | | | | |
| | Bus/Jeepney Terminal | | | | | | | | | |
| | Parks/Playground | | | | | | | | | |
| | Total | 1 | 1 | 1 | | | | | | |
| Dolores | Public Market | 2 | 2 | 2 | | | | | | |
| | Bus/Jeepney Terminal | 2 | 2 | 2 | | | | | | |
| | Parks/Playground | 1 | 1 | 1 | | | | | | |
| | Total | 5 | 5 | 5 | | | | | | |
| General MacArthur | Public Market | 1 | 1 | 1 | | | | | | |
| | Bus/Jeepney Terminal | | | | | | | | | |
| | Parks/Playground | | | | | | | | | |
| | Total | 1 | 1 | 1 | | | | | | |
| Giporlos | Public Market | | | 1 | | | | | | |
| | Bus/Jeepney Terminal | | | | | | | | | |
| | Parks/Playground | | | | | | | | | |
| | Total | | | 1 | | | | | | |
| Guluan | Public Market | 3 | 3 | 3 | | | | | | |
| | Bus/Jeepney Terminal | | | | | | | | | |
| | Parks/Playground | | | | | | | | | |
| | Total | 3 | 3 | 3 | | | | | | |

Table 8.5.7 Additional Number of Public Utilities with Sanitary Toilets in Phase I and II (Cont'd)

| Name of Municipality | Type | Coverage in Base Year (1998) | | | Phase I Coverage (2004) | | | Phase I Coverage (2010) | | |
|----------------------|----------------------|-----------------------------------|---------------------------------|-----------------------------------|--|---------------------------------|-----------------------------------|--|---------------------------------|--|
| | | No. of PU with Toilets Facilities | No. of PU with Sanitary Toilets | No. of PU with Toilets Facilities | Add'l. No. of Public Utilities with Sanitary Toilets | No. of PU with Sanitary Toilets | No. of PU with Toilets Facilities | Add'l. No. of Public Utilities with Sanitary Toilets | No. of PU with Sanitary Toilets | |
| Hermani | Public Market | 1 | 1 | 1 | | 1 | 1 | | 1 | |
| | Bus/Jeepney Terminal | | | | | | | | | |
| | Parks/Playground | | | | | | | | | |
| | Total | 1 | 1 | 1 | | 1 | 1 | | 1 | |
| Jipapad | Public Market | | | | | | | | | |
| | Bus/Jeepney Terminal | | | | | | | | | |
| | Parks/Playground | | | | | | | | | |
| | Total | | | | | | | | | |
| Lawaan | Public Market | 1 | 1 | 1 | | 1 | 1 | | 1 | |
| | Bus/Jeepney Terminal | | | | | | | | | |
| | Parks/Playground | | | | | | | | | |
| | Total | 1 | 1 | 1 | | 1 | 1 | | 1 | |
| Lilorente | Public Market | 1 | 1 | 1 | | 1 | 1 | | 1 | |
| | Bus/Jeepney Terminal | | | | | | | | | |
| | Parks/Playground | | | | | | | | | |
| | Total | 1 | 1 | 1 | | 1 | 1 | | 1 | |
| Maslog | Public Market | | | | | | | | | |
| | Bus/Jeepney Terminal | | | | | | | | | |
| | Parks/Playground | | | | | | | | | |
| | Total | | | | | | | | | |
| Maydolong | Public Market | 1 | 1 | 1 | | 1 | 1 | | 1 | |
| | Bus/Jeepney Terminal | | | | | | | | | |
| | Parks/Playground | 1 | 1 | 1 | | 1 | 1 | | 1 | |
| | Total | 2 | 2 | 2 | | 2 | 2 | | 2 | |
| Mercedes | Public Market | 1 | 1 | 1 | | 1 | 1 | | 1 | |
| | Bus/Jeepney Terminal | | | | | | | | | |
| | Parks/Playground | | | | | | | | | |
| | Total | 1 | 1 | 1 | | 1 | 1 | | 1 | |
| Oras | Public Market | | | | | | | | | |
| | Bus/Jeepney Terminal | | | | | | | | | |
| | Parks/Playground | | | | | | | | | |
| | Total | | | | | | | | | |
| Quinapondan | Public Market | | | | | | | | | |
| | Bus/Jeepney Terminal | | | | | | | | | |
| | Parks/Playground | | | | | | | | | |
| | Total | | | | | | | | | |

Table 8.5.7 Additional Number of Public Utilities with Sanitary Toilets in Phase I and II (Cont'd)

| Name of Municipality | Type | Coverage in Base Year (1998) | | | Phase I Coverage (2004) | | | Phase I Coverage (2010) | | |
|----------------------|----------------------|-----------------------------------|---------------------------------|-----------------------------------|--|---------------------------------|-----------------------------------|--|---------------------------------|--|
| | | No. of PU with Toilets Facilities | No. of PU with Sanitary Toilets | No. of PU with Toilets Facilities | Add'l. No. of Public Utilities with Sanitary Toilets | No. of PU with Sanitary Toilets | No. of PU with Toilets Facilities | Add'l. No. of Public Utilities with Sanitary Toilets | No. of PU with Sanitary Toilets | |
| | | | | | | | | | | |
| Salcedo | Public Market | | | | | | | | | |
| | Bus/Jeepney Terminal | | | | | | | | | |
| | Parks/Playground | | | | | | | | | |
| | Total | | | | | | | | | |
| San Julian | Public Market | | | | | | | | | |
| | Bus/Jeepney Terminal | | | | | | | | | |
| | Parks/Playground | | | | | | | | | |
| | Total | | | | | | | | | |
| San Policarpo | Public Market | | | | | | | | | |
| | Bus/Jeepney Terminal | | | | | | | | | |
| | Parks/Playground | | | | | | | | | |
| | Total | | | | | | | | | |
| Sulat | Public Market | | | | | | | | | |
| | Bus/Jeepney Terminal | | | | | | | | | |
| | Parks/Playground | | | | | | | | | |
| | Total | | | | | | | | | |
| Taft | Public Market | | | | | | | | | |
| | Bus/Jeepney Terminal | | | | | | | | | |
| | Parks/Playground | | | | | | | | | |
| | Total | | | | | | | | | |
| Provincial Total | Public Market | 16 | 16 | 23 | 7 | 23 | 23 | 23 | 23 | |
| | Bus/Jeepney Terminal | 4 | 4 | 4 | 4 | 4 | 4 | 4 | 4 | |
| | Parks/Playground | 2 | 2 | 2 | 2 | 2 | 2 | 2 | 2 | |
| | Total | 22 | 22 | 29 | 7 | 29 | 29 | 29 | 29 | |

8.6 Facilities, Equipment and Rehabilitation Required to Meet the Target Services

8.6.1 Water Supply

(1) Required water supply facilities

Urban water supply:

Urban water supply facilities required by target year shown in Table 8.6.1 were estimated as the required number of house connections based on the additional service coverage.

As reference, the following requirements were also estimated:

- daily average water demand at 100 lpcd consumption rate, and
- number of deep wells to meet the daily maximum water demand based on the groundwater productivity.

(daily maximum water demand = 1.3 x daily average water demand)

Information pertaining to the expansion plan of Level III systems was arranged to be indicated in Table 8.6.1 and details presented in Table 8.6.2, however, required data were not available during this PW4SP preparation.

Rural water supply:

Rural water supply facilities required by target year shown in Tables 8.6.3(a) and (b) were estimated as the number of Level II systems with number of communal faucets and the number of Level I wells broken-down to deep and shallow wells. However, Level II systems shall be excluded from medium-term plan due to no Level II projects under the ADB-assisted project, although some untapped springs available for Level II system were confirmed during this PW4SP preparation.

(2) Required well drilling and rehabilitation equipment

Presently, the DPWH-DEO (Borongan) has one unit of rotary type drilling rig (required minor repair) applicable for construction of shallow well only.

Taking into account the utilization of existing equipment, the additional number of required equipment is estimated as described below.

Applicable type of well drilling equipment is determined considering the geological formation of the province, the easiness to technically operate. Both types of percussion and rotary are suitable for the soft and hard formations, and the percussion type can be easily operated and maintained without special training to drillers compared with the latter, it is very useful to bores in the boulders or cobbles formations. Thus, the drilling equipment of percussion type is recommendable to be selected in the PW4SP preparation.

Table 8.6.1 Urban Water Supply Facilities Required by Target Year

| Name of Municipality | Reference on Expansion of Existing Level III System | | | | Phase I (2004) Requirements | | | | Phase II (2010) Requirements | | | | | |
|----------------------|---|-------|------------------------|-------------------|-----------------------------|--------------------|------------------------------------|-----------------------------|--|-----------------------------------|------------------------------------|-----------------------------|--|-----------------------------------|
| | Name of Operating Body | Area | Coverage in 1998 | | Type of Water Source | Plan for Expansion | Additional Population to be Served | Number of House Connections | Daily Average Water Demand (m ³ /day) | Number of Spring Dev't/ Deep Well | Additional Population to be Served | Number of House Connections | Daily Average Water Demand (m ³ /day) | Number of Spring Dev't/ Deep Well |
| | | | No. of Barangay Served | Population Served | | | | | | | | | | |
| Artache | Not Applicable | Urban | N.A. | N.A. | N.A. | N.A. | 687 | 131 | 69 | 1 | 4,339 | 1,085 | 434 | 1 |
| | | Rural | N.A. | N.A. | | | | | | | | | | |
| | | Total | N.A. | N.A. | | | | | | | | | | |
| Balangiga | Not Applicable | Urban | N.A. | N.A. | N.A. | 974 | 184 | 97 | 1 | 1 | 6,277 | 1,569 | 628 | 1 |
| | | Rural | N.A. | N.A. | | | | | | | | | | |
| | | Total | N.A. | N.A. | | | | | | | | | | |
| Balangkayan | Balangkayan WS | Urban | 5 | 1,256 | SP | No | | | | | 1,813 | 453 | 181 | 1 |
| | | Rural | | | | | | | | | | | | |
| | | Total | 5 | 1,256 | | | | | | | | | | |
| Borongon (Capital) | Borongon WD | Urban | 16 | 6,348 | SP | No | | | | | 13,821 | 3,455 | 1,382 | 2 |
| | | Rural | 1 | 160 | | | | | | | | | | |
| | | Total | 17 | 6,508 | | | | | | | | | | |
| Camada | Camada | Urban | 1 | 159 | SP | No | | | | | | | | |
| | | Rural | 1 | 159 | | | | | | | | | | |
| | | Total | 2 | 319 | | | | | | | | | | |
| Municipal Total | Municipal Total | Urban | 16 | 6,348 | | | | | | | | | | |
| | | Rural | 2 | 319 | | | | | | | | | | |
| | | Total | 18 | 6,667 | | | | | | | | | | |
| Canavid | Not Applicable | Urban | N.A. | N.A. | N.A. | 978 | 168 | 98 | 1 | 1 | 6,375 | 1,593 | 637 | 1 |
| | | Rural | N.A. | N.A. | | | | | | | | | | |
| | | Total | N.A. | N.A. | | | | | | | | | | |
| Dolores | Not Applicable | Urban | N.A. | N.A. | N.A. | 2,143 | 379 | 214 | 1 | 1 | 13,580 | 3,395 | 1,358 | 2 |
| | | Rural | N.A. | N.A. | | | | | | | | | | |
| | | Total | N.A. | N.A. | | | | | | | | | | |
| General MacArthur | Not Applicable | Urban | N.A. | N.A. | N.A. | | | | | | 4,334 | 1,084 | 433 | 1 |
| | | Rural | N.A. | N.A. | | | | | | | | | | |
| | | Total | N.A. | N.A. | | | | | | | | | | |
| Giporlos | Not Applicable | Urban | N.A. | N.A. | N.A. | 755 | 144 | 76 | 1 | 1 | 4,081 | 1,020 | 408 | 1 |
| | | Rural | N.A. | N.A. | | | | | | | | | | |
| | | Total | N.A. | N.A. | | | | | | | | | | |
| Guruan | Not Applicable | Urban | N.A. | N.A. | N.A. | 1,404 | 267 | 140 | 1 | 1 | 8,547 | 2,137 | 855 | 2 |
| | | Rural | N.A. | N.A. | | | | | | | | | | |
| | | Total | N.A. | N.A. | | | | | | | | | | |
| Hemani | Not Applicable | Urban | N.A. | N.A. | N.A. | 372 | 64 | 37 | 1 | 1 | 2,412 | 603 | 241 | 1 |
| | | Rural | N.A. | N.A. | | | | | | | | | | |
| | | Total | N.A. | N.A. | | | | | | | | | | |
| Urapad | Not Applicable | Urban | N.A. | N.A. | N.A. | 560 | 89 | 56 | 1 | 1 | 3,658 | 915 | 366 | 1 |
| | | Rural | N.A. | N.A. | | | | | | | | | | |
| | | Total | N.A. | N.A. | | | | | | | | | | |

Table 8.6.1 Urban Water Supply Facilities Required by Target Year (Cont'd)

| Name of Municipality | Reference on Expansion of Existing Level III System | | | | Phase I (2004) Requirements | | | | Phase II (2010) Requirements | | | | | |
|----------------------|---|-------|-----------------------------------|----------------------|-----------------------------|------------------------------------|-----------------------------|--|-----------------------------------|------------------------------------|-----------------------------|--|-----------------------------------|---------------|
| | Name of Operating Body | Area | No. of Served Barangay Population | Type of Water Source | Plan for Expansion | Additional Population to be Served | Number of House Connections | Daily Average Water Demand (m ³ /day) | Number of Spring Dev'./ Deep Well | Additional Population to be Served | Number of House Connections | Daily Average Water Demand (m ³ /day) | Number of Spring Dev'./ Deep Well | |
| | | | | | | | | | | | | | | No. of Served |
| Lawaan | Not Applicable | Urban | N.A. | N.A. | N.A. | 990 | 159 | 99 | 1 | 6,584 | 1,646 | 658 | 1 | |
| | | Rural | N.A. | N.A. | | | | | | | | | | |
| | | Total | | | | | | | | | | | | |
| Lorente | Lorente WD | Urban | 8 | 506 | SP | 894 | 185 | 89 | 1 | 4,996 | 1,024 | 410 | 1 | |
| | | Rural | 8 | 506 | | | | | | | | | | |
| | | Total | | | | | | | | | | | | |
| Maslog | Not Applicable | Urban | N.A. | N.A. | N.A. | 189 | 34 | 19 | 1 | 1,226 | 307 | 123 | 1 | |
| | | Rural | N.A. | N.A. | | | | | | | | | | |
| | | Total | | | | | | | | | | | | |
| Maydolong | Maydolong WS | Urban | 7 | 1,150 | SP | | | | | 5,311 | 1,328 | 531 | 1 | |
| | | Rural | 1 | 116 | | | | | | | | | | |
| | | Total | 8 | 1,266 | | | | | | | | | | |
| Mercedes | Not Applicable | Urban | N.A. | N.A. | N.A. | 244 | 36 | 24 | 1 | 1,605 | 401 | 161 | 1 | |
| | | Rural | N.A. | N.A. | | | | | | | | | | |
| | | Total | | | | | | | | | | | | |
| Oras | Not Applicable | Urban | N.A. | N.A. | N.A. | | | | | 8,927 | 2,232 | 893 | 2 | |
| | | Rural | N.A. | N.A. | | | | | | | | | | |
| | | Total | | | | | | | | | | | | |
| Quinapondan | Not Applicable | Urban | N.A. | N.A. | N.A. | 787 | 111 | 79 | 1 | 5,054 | 1,264 | 505 | 1 | |
| | | Rural | N.A. | N.A. | | | | | | | | | | |
| | | Total | | | | | | | | | | | | |
| Salcedo | Salcedo WS | Urban | 12 | 1,458 | SP/DW | 436 | 86 | 44 | 1 | 1,033 | 258 | 103 | 1 | |
| | | Rural | | | | | | | | | | | | |
| | | Total | 12 | 1,458 | | | | | | | | | | |
| San Julian | Not Applicable | Urban | N.A. | N.A. | N.A. | 375 | 77 | 38 | 1 | 2,262 | 566 | 226 | 1 | |
| | | Rural | N.A. | N.A. | | | | | | | | | | |
| | | Total | | | | | | | | | | | | |
| San Policarpo | Not Applicable | Urban | N.A. | N.A. | N.A. | 658 | 129 | 66 | 1 | 4,237 | 1,059 | 424 | 1 | |
| | | Rural | N.A. | N.A. | | | | | | | | | | |
| | | Total | | | | | | | | | | | | |
| Sulat | Sulat WD | Urban | 5 | 3,726 | DW | | | | | 2,715 | 679 | 272 | 1 | |
| | | Rural | | | | | | | | | | | | |
| | | Total | 5 | 3,726 | | | | | | | | | | |
| Tait | Not Applicable | Urban | N.A. | N.A. | N.A. | | | | | 5,037 | 1,259 | 504 | 1 | |
| | | Rural | N.A. | N.A. | | | | | | | | | | |
| | | Total | | | | | | | | | | | | |
| Provincial Total | | Urban | 69 | 20,792 | | 12,446 | 2,243 | 1,245 | 16 | 117,322 | 29,332 | 11,733 | 27 | |
| | | Rural | 5 | 756 | | | | | | | | | | |
| | | Total | 74 | 21,548 | | | | | | | | | | |

Table 8.6.2 Plan for Expansion of Existing Level III Systems

| Name of Municipality | Name of Operating Body | Additional Areas Barangay to be Covered | Additional Population to be Served | Additional Water Sources | |
|----------------------|------------------------|---|------------------------------------|--------------------------|--------------------------------|
| | | | | Type | Capacity (m ³ /day) |
| Balangkayan | Balangkayan WS | | | | |
| Borongon (Capital) | Borongon WD | | | | |
| | Camada | | | | |
| | Municipal Total | | | | |
| Llorente | Llorente WD | | | | |
| Maydolong | Maydolong WS | | | | |
| Salcedo | Salcedo WS | | | | |
| Sulat | Sulat WD | | | | |

Table 8.6.3(a) Rural Water Supply Facilities Required by Target Year

| Name of Municipality | Phase I (2004) Requirements | | | | | Phase II (2010) Requirements | | | | | | | |
|----------------------|-----------------------------|-------------------------|----------------------|------|-------|------------------------------|----------------------|------|----------------------|-------|-------|-----------|-------|
| | Level II | | Level I | | | Level I | | | Level I | | Total | | |
| | Number of System | No. of Communal Faucets | Number of Deep Wells | | | No. of Shallow Wells | Number of Deep Wells | | No. of Shallow Wells | | | | |
| | | | 40 m | 80 m | 120 m | | 40 m | 80 m | | 120 m | | Sub-total | |
| Arceche | | | | | | | | 72 | | 72 | 8 | 80 | |
| Balangiga | | | 2 | | | 4 | | | | | 29 | 29 | |
| Balangkayan | | | 4 | | | 2 | | | | | 68 | 68 | |
| Borongan (Capital) | | | 15 | | | 14 | | | 43 | | 171 | 214 | |
| Can-avid | | | 3 | | | 3 | | | | 62 | 40 | 102 | |
| Dolores | | | 11 | | | 6 | | | | 149 | 37 | 186 | |
| General Macarthur | | | 1 | | | 3 | | | 9 | | 72 | 81 | |
| Giporlos | | | 7 | | | 2 | | | | | 12 | 12 | |
| Gunuan | | | 7 | | | 2 | | | 90 | | 38 | 128 | |
| Hernani | | | 7 | | | 7 | | | | | 54 | 54 | |
| Jipapad | | | 4 | | | 2 | | | 42 | | 4 | 46 | |
| Lawaan | | | 2 | | | 3 | | | | | 19 | 19 | |
| Lorente | | | 5 | | | 8 | | | | | 18 | 18 | |
| Maslog | | | 2 | | | 2 | | | | 4 | 34 | 38 | |
| Maydolong | | | | | | 3 | | | | | 73 | 73 | |
| Mercedes | | | 3 | | | 1 | | | 7 | | 10 | 17 | |
| Oras | | | 7 | | | 8 | | | 257 | | 257 | 257 | |
| Quinaoondan | | | 2 | | | 13 | | | 18 | | 25 | 43 | |
| Salcedo | | | 8 | | | 2 | | | | | | | |
| San Julian | | | 12 | | | 5 | | | 3 | | 20 | 23 | |
| San Policampo | | | 3 | | | 20 | | | 81 | | 81 | 81 | |
| Sulat | | | 6 | | | 6 | | | 18 | | 27 | 45 | |
| Taft | | | 7 | | | 7 | | | 41 | | 41 | 82 | |
| Provincial Total | | | 118 | | | 129 | | | 310 | 582 | 4 | 896 | 1,696 |

Table 8.6.3(b) Rural Water Supply Facilities Required by Target Year

| Name of Municipality | Phase I (2004) Requirements | | | | | | | | | | | Phase II (2010) Requirements | | | | | | |
|----------------------|--|-------|-----------|---------------|----------------------|-------|--------------------|-------------|--------------------|-------------|----------------------|--|---------------|----------------------|--------------------|-------------|--|--------------------|
| | Percentage Allocated to Public Facility (100%) | | | | | | | | | | | Percentage Allocated to Public Facility (50%) | | | | | | |
| | Percentage Allocated for Public Wells (80%) and Percentage Allocated for Public Spring Development (20%) | | | | | | | | | | | Percentage Allocated for Public Wells (80%) and Percentage Allocated for Public Spring Development (20%) | | | | | | |
| | Number of Deep Wells | | | | No. of Shallow Wells | | Total | | No. of Spring Dev. | Grand Total | Number of Deep Wells | | | No. of Shallow Wells | | Total | | No. of Spring Dev. |
| 40 m | 80 m | 120 m | Sub-total | Shallow Wells | Total | Total | No. of Spring Dev. | Grand Total | 40 m | 80 m | 120 m | Sub-total | Shallow Wells | Total | No. of Spring Dev. | Grand Total | | |
| Areche | | | | 12 | 12 | 12 | 1 | 13 | | 29 | | 29 | 3 | 32 | 8 | 40 | | |
| Balanga | | 2 | | 1 | 3 | 3 | 3 | 6 | | | | | 12 | 12 | 3 | 15 | | |
| Balangkayan | | 4 | | 1 | 5 | 5 | 1 | 6 | | | | | 27 | 27 | 7 | 34 | | |
| Borongon (Capital) | 15 | | | 15 | 15 | 15 | 14 | 29 | 18 | | | | 18 | 86 | 21 | 107 | | |
| Canavard | 3 | | | 3 | 5 | 5 | 1 | 6 | 25 | | | | 25 | 41 | 10 | 51 | | |
| Dolores | 11 | | | 4 | 15 | 15 | 2 | 17 | 60 | | | | 60 | 74 | 19 | 93 | | |
| General Macarthur | 1 | | | 1 | 1 | 1 | 3 | 4 | 4 | | | | 4 | 33 | 8 | 41 | | |
| Giporlos | 7 | | | 7 | 8 | 8 | 1 | 9 | 36 | | | | 36 | 51 | 13 | 64 | | |
| Guiuan | 7 | | | 2 | 9 | 9 | 9 | 18 | | | | | 22 | 22 | 5 | 27 | | |
| Hernani | 7 | | | 7 | 7 | 7 | 7 | 14 | | 17 | | | 17 | 18 | 5 | 23 | | |
| Jinapad | 4 | | | 4 | 4 | 4 | 2 | 6 | | | | | 8 | 8 | 2 | 10 | | |
| Lawaan | 2 | | | 2 | 3 | 3 | 2 | 5 | | | | | 7 | 7 | 2 | 9 | | |
| Lorente | 5 | | | 6 | 11 | 11 | 2 | 13 | | | 2 | | 13 | 15 | 4 | 19 | | |
| Maslog | 2 | | | 2 | 2 | 2 | 2 | 4 | | | 2 | | 4 | 7 | 7 | 14 | | |
| Maydolong | | | | 3 | 3 | 3 | 3 | 6 | | | | | 3 | 4 | 7 | 11 | | |
| Mercedes | 3 | | | 3 | 3 | 3 | 1 | 4 | 3 | | | | 3 | 7 | 2 | 9 | | |
| Oras | 7 | | | 2 | 9 | 9 | 6 | 15 | 103 | | | | 103 | 118 | 26 | 144 | | |
| Quinapondan | 2 | | | 8 | 10 | 10 | 5 | 15 | 8 | | | | 8 | 18 | 4 | 22 | | |
| Salcedo | 8 | | | 8 | 8 | 8 | 2 | 10 | | | | | 10 | 10 | 2 | 12 | | |
| San Julian | 12 | | | 12 | 15 | 15 | 2 | 17 | 1 | | | | 1 | 9 | 10 | 19 | | |
| San Policarpo | 3 | | | 3 | 18 | 21 | 2 | 23 | 33 | | | | 33 | 33 | 8 | 41 | | |
| Sulat | 6 | | | 6 | 9 | 9 | 3 | 12 | 8 | | | | 8 | 10 | 5 | 15 | | |
| Taft | 7 | | | 7 | 11 | 11 | 3 | 14 | 17 | | | | 17 | 16 | 8 | 24 | | |
| Provincial Total | 118 | | | 118 | 71 | 189 | 58 | 247 | 234 | 128 | 2 | 364 | 319 | 683 | 170 | 853 | | |

Medium size percussion drilling rig (truck-mounted type for deep well):

Average performance

- 1 well/30 days (5 m/day of drilling rate with finishing work)

Annual accomplishment

- 9 wells/year (365 days/year ÷ 30 days/well x 0.75)

Required number

- 3 sets for the total 118 deep wells under ADB-assisted project

Well rehabilitation equipment:

Average performance

- 1 well/7 days (well redevelopment and finishing work

Annual accomplishment

- 39 wells/year (365 days/year ÷ 7 days/well x 0.75)

Required number

- 1 set for 10% of 118 Level 1 deep wells

Support vehicle:

Type - pick-up truck with winch, double cab

Required number

- 1 unit for well rehabilitation

Considering the existing rotary type drilling rig, it is necessary to mobilize at least three (3) units of medium size percussion rig in the implementation of ADB-assisted project. In addition, three (3) units of service truck equipped with crane are required for a percussion rig for hauling drilling tools and water. However, following equipment shall be considered for medium-term development plan to the physical targets:

- 1 set of well rehabilitation equipment for 10% of deep wells (at least 1 set shall be held by the provincial government); and
- 1 unit of support vehicle for well rehabilitation.

8.6.2 Sanitation

Table 8.6.4 Urban Household Toilets Required by Target Year

| Name of Municipality | Phase I (2004) Requirements | | | | | | | | | | Phase II (2010) Requirements | | | | | | | | | |
|----------------------|-----------------------------|------------|----------|-------|--|-------------------------|------------|----------|-------|--|------------------------------|------------|----------|--------|--|-------------------------|------------|----------|--------|--|
| | Additional HHs to be Served | | | | | No. of HHs to be Served | | | | | Additional HHs to be Served | | | | | No. of HHs to be Served | | | | |
| | Flush | Pour Flush | VIP/ Dry | Total | | Flush | Pour Flush | VIP/ Dry | Total | | Flush | Pour Flush | VIP/ Dry | Total | | Flush | Pour Flush | VIP/ Dry | Total | |
| Arche | 120 | 287 | | 407 | | 120 | 287 | | 407 | | 494 | | | 494 | | 494 | | | 494 | |
| Balangiga | 170 | 225 | | 395 | | 170 | 225 | | 395 | | 717 | | | 717 | | 717 | | | 717 | |
| Balangkayan | 73 | 36 | | 109 | | 73 | 36 | | 109 | | 303 | | | 303 | | 303 | | | 303 | |
| Borongan (Capital) | 155 | 1,591 | | 1,746 | | 155 | 1,591 | | 1,746 | | 1,978 | | | 1,978 | | 1,978 | | | 1,978 | |
| Canavid | 155 | 235 | | 390 | | 155 | 235 | | 390 | | 745 | | 21 | 766 | | 745 | 21 | | 766 | |
| Dolores | 271 | 512 | | 783 | | 271 | 512 | | 783 | | 1,573 | | | 1,573 | | 1,573 | | | 1,573 | |
| General MacArthur | 133 | 220 | | 353 | | 133 | 220 | | 353 | | 459 | | | 459 | | 459 | | | 459 | |
| Ciporlos | 197 | 23 | | 220 | | 197 | 23 | | 220 | | 971 | | | 971 | | 971 | | | 971 | |
| Guiuan | 52 | 246 | | 298 | | 52 | 246 | | 298 | | 282 | | 6 | 288 | | 282 | 6 | | 288 | |
| Hemami | 82 | 45 | | 127 | | 82 | 45 | | 127 | | 434 | | 51 | 485 | | 434 | 51 | | 485 | |
| Jupapad | 147 | 400 | 24 | 571 | | 147 | 400 | 24 | 571 | | 780 | | 90 | 870 | | 780 | 90 | | 870 | |
| Lawaan | 118 | 86 | | 204 | | 118 | 86 | | 204 | | 502 | | | 502 | | 502 | | | 502 | |
| Lorente | 31 | 46 | | 77 | | 31 | 46 | | 77 | | 142 | | | 142 | | 142 | | | 142 | |
| Maslog | 122 | 186 | | 308 | | 122 | 186 | | 308 | | 641 | | | 641 | | 641 | | | 641 | |
| Maysolong | 33 | 95 | 11 | 139 | | 33 | 95 | 11 | 139 | | 194 | | 36 | 230 | | 194 | 36 | | 230 | |
| Mercedes | 448 | 513 | 65 | 1,026 | | 448 | 513 | 65 | 1,026 | | 1,093 | | | 1,093 | | 1,093 | | | 1,093 | |
| Omas | 103 | 193 | 34 | 330 | | 103 | 193 | 34 | 330 | | 612 | | 133 | 745 | | 612 | 133 | | 745 | |
| Quinspondan | 79 | 90 | 26 | 195 | | 79 | 90 | 26 | 195 | | 279 | | | 279 | | 279 | | | 279 | |
| Salcedo | 66 | 248 | 24 | 338 | | 66 | 248 | 24 | 338 | | 252 | | | 252 | | 252 | | | 252 | |
| San Julian | 119 | 184 | 54 | 357 | | 119 | 184 | 54 | 357 | | 480 | | | 480 | | 480 | | | 480 | |
| San Policarpo | 161 | 184 | 25 | 370 | | 161 | 184 | 25 | 370 | | 627 | | | 627 | | 627 | | | 627 | |
| Sulat | 238 | 25 | | 263 | | 238 | 25 | | 263 | | 608 | | | 608 | | 608 | | | 608 | |
| Tait | 2,387 | 5,618 | 263 | 8,268 | | 2,387 | 5,618 | 263 | 8,268 | | 14,697 | | 337 | 15,034 | | 14,697 | 337 | | 15,034 | |
| Provincial Total | 2,387 | 5,618 | 263 | 8,268 | | 2,387 | 5,618 | 263 | 8,268 | | 14,697 | | 337 | 15,034 | | 14,697 | 337 | | 15,034 | |

Table 8.6.5 Rural Household Toilets Required by Target Year

| Name of Municipality | Phase I (2004) Requirements | | | | | | Phase II (2010) Requirements | | | | | | |
|----------------------|-----------------------------|-------|----------|-------------------------|-------|----------|------------------------------|-------|----------|-------------------------|--------|----------|--------|
| | Additional HHs to be Served | | | No. of HHs to be Served | | | Additional HHs to be Served | | | No. of HHs to be Served | | | |
| | Flush | Pour | VIP/ Dry | Flush | Pour | VIP/ Dry | Flush | Pour | VIP/ Dry | Flush | Pour | VIP/ Dry | Total |
| Arceche | 532 | 532 | 532 | 532 | 532 | 532 | 532 | 532 | 532 | 532 | 532 | 532 | 986 |
| Balangiga | 45 | 140 | 95 | 45 | 140 | 95 | 45 | 140 | 95 | 45 | 140 | 95 | 674 |
| Bahangkayan | 130 | 124 | 254 | 130 | 124 | 254 | 254 | 254 | 254 | 254 | 254 | 254 | 821 |
| Borongon (Capital) | 2,235 | 2,235 | 2,235 | 2,235 | 2,235 | 2,235 | 2,235 | 167 | 2,669 | 167 | 2,669 | 167 | 2,836 |
| Can-avid | 756 | 756 | 756 | 756 | 756 | 756 | 756 | 1,382 | 1,382 | 1,382 | 1,382 | 1,382 | 2,836 |
| Dolores | 919 | 16 | 935 | 919 | 16 | 935 | 935 | 2,678 | 2,678 | 2,678 | 2,678 | 2,678 | 2,678 |
| General MacArthur | 524 | 524 | 524 | 524 | 524 | 524 | 524 | 665 | 665 | 665 | 665 | 665 | 665 |
| Giporós | 74 | 73 | 147 | 74 | 73 | 147 | 147 | 299 | 299 | 299 | 299 | 299 | 299 |
| Gunuan | 1,080 | 421 | 1,501 | 1,080 | 421 | 1,501 | 1,501 | 2,528 | 2,528 | 2,528 | 2,528 | 2,528 | 2,528 |
| Hernani | 522 | 522 | 522 | 522 | 522 | 522 | 522 | 877 | 877 | 877 | 877 | 877 | 877 |
| Jipapad | 156 | 156 | 156 | 156 | 156 | 156 | 156 | 392 | 392 | 392 | 392 | 392 | 392 |
| Lawaan | 70 | 70 | 70 | 70 | 70 | 70 | 70 | 580 | 580 | 580 | 580 | 580 | 580 |
| Llorente | 188 | 188 | 188 | 188 | 188 | 188 | 188 | 447 | 447 | 447 | 447 | 447 | 447 |
| Maslog | 48 | 48 | 96 | 48 | 48 | 96 | 96 | 316 | 316 | 316 | 316 | 316 | 316 |
| Maydolong | 18 | 69 | 39 | 126 | 18 | 69 | 126 | 91 | 878 | 91 | 878 | 91 | 969 |
| Mercedes | 17 | 116 | 133 | 17 | 116 | 133 | 133 | 631 | 631 | 631 | 631 | 631 | 631 |
| Oras | 479 | 746 | 1,225 | 479 | 746 | 1,225 | 1,225 | 3,314 | 3,314 | 3,314 | 3,314 | 3,314 | 3,314 |
| Quinapondan | 218 | 218 | 218 | 218 | 218 | 218 | 218 | 1,100 | 1,100 | 1,100 | 1,100 | 1,100 | 1,100 |
| Saicedo | 26 | 376 | 402 | 26 | 376 | 402 | 402 | 987 | 987 | 987 | 987 | 987 | 987 |
| San Julian | 337 | 337 | 337 | 337 | 337 | 337 | 337 | 660 | 660 | 660 | 660 | 660 | 660 |
| San Policarpo | 845 | 845 | 845 | 845 | 845 | 845 | 845 | 964 | 964 | 964 | 964 | 964 | 964 |
| Sulat | 288 | 288 | 288 | 288 | 288 | 288 | 288 | 799 | 799 | 799 | 799 | 799 | 799 |
| Tait | 476 | 220 | 696 | 476 | 220 | 696 | 696 | 1,944 | 1,944 | 1,944 | 1,944 | 1,944 | 1,944 |
| Provincial Total | 18 | 8,933 | 3,375 | 12,326 | 18 | 8,933 | 3,375 | 258 | 26,591 | 258 | 26,591 | 258 | 26,849 |

Table 8.6.6 Public School Toilets Required by Target Year

| Name of Municipality | Phase I (2004) Requirements | | | Phase II (2010) Requirements | | |
|-------------------------|--|--------------------|--------------------------|--|--------------------|--------------------------|
| | Additional Public School Students to be Served | No. of Toilet Unit | No. of Toilet Facilities | Additional Public School Students to be Served | No. of Toilet Unit | No. of Toilet Facilities |
| Arteche | 1,547 | 39 | 8 | 1,560 | 39 | 8 |
| Balanga | 616 | 16 | 4 | 88 | 3 | 1 |
| Balangkayan | 701 | 18 | 4 | 67 | 2 | 1 |
| Borongan (Capital) | 4,234 | 106 | 22 | | | |
| Can-avid | 1,837 | 46 | 10 | 2,694 | 68 | 14 |
| Dolores | 4,041 | 102 | 21 | 4,264 | 107 | 22 |
| General MacArthur | 230 | 6 | 2 | | | |
| Giporlos | | | | | | |
| Guiuan | 4,027 | 101 | 21 | 833 | 21 | 5 |
| Hernani | 902 | 23 | 5 | | | |
| Jipapad | 592 | 15 | 3 | 576 | 15 | 3 |
| Lawaan | 583 | 15 | 3 | | | |
| Llorente | 977 | 25 | 5 | | | |
| Maslog | 125 | 4 | 1 | 40 | 1 | 1 |
| Maydolong | | | | | | |
| Mercedes | 685 | 18 | 4 | 204 | 6 | 2 |
| Oras | 3,758 | 94 | 19 | 258 | 7 | 2 |
| Quinapondan | 1,312 | 33 | 7 | 1,254 | 32 | 7 |
| Salcedo | 535 | 14 | 3 | | | |
| San Julian | 1,251 | 32 | 7 | 1,196 | 30 | 6 |
| San Policarpo | 1,273 | 32 | 7 | 126 | 4 | 1 |
| Sulat | 257 | 7 | 2 | 20 | 1 | 1 |
| Taft | 2,137 | 54 | 11 | 32 | 1 | 1 |
| Provincial Total | 31,620 | 800 | 169 | 13,212 | 337 | 75 |

Table 8.6.7 Public Toilets Required by Target Year

| Name of Municipality | Phase I (2004) Requirements | | | | Phase II (2010) Requirements | | | |
|-------------------------|-----------------------------|----------------------|------------------|----------|------------------------------|----------------------|------------------|-------|
| | Number of Public Toilets | | | | Number of Public Toilets | | | |
| | Public Market | Bus/Jeepney Terminal | Parks/Playground | Total | Public Market | Bus/Jeepney Terminal | Parks/Playground | Total |
| Arteche | | | | | | | | |
| Balangiga | 1 | | | 1 | | | | |
| Balangkayan | 1 | | | 1 | | | | |
| Borongon (Capital) | | | | | | | | |
| Can-avid | | | | | | | | |
| Dolores | | | | | | | | |
| General MacArthur | | | | | | | | |
| Giporlos | 1 | | | 1 | | | | |
| Guiuan | | | | | | | | |
| Hernani | | | | | | | | |
| Jipapad | | | | | | | | |
| Lawaan | | | | | | | | |
| Lorente | | | | | | | | |
| Maslog | | | | | | | | |
| Maydolong | | | | | | | | |
| Mercedes | | | | | | | | |
| Oras | 1 | | | 1 | | | | |
| Quinapondan | 1 | | | 1 | | | | |
| Salcedo | 1 | | | 1 | | | | |
| San Julian | | | | | | | | |
| San Policarpo | | | | | | | | |
| Sulat | | | | | | | | |
| Taft | 1 | | | 1 | | | | |
| Provincial Total | 7 | | | 7 | | | | |