

STREAM CURRENT LOAD

FRAME -3

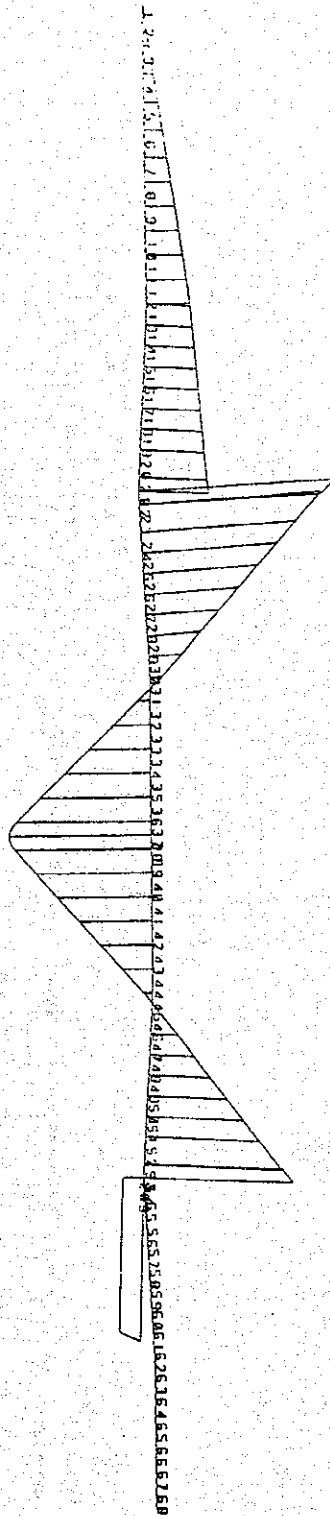
DEAD LOAD

FRAME - 3

STRUCTURE DATA

TYPE = SPACE
 NJ = 273
 NM = 272
 NE = 0
 NS = 0
 NRJ = 177
 NL = 2
 XMAX = 218.0
 YMAX = 124.3
 ZMAX = 0

Maximum 1/150.16
 1/277.16 M.272

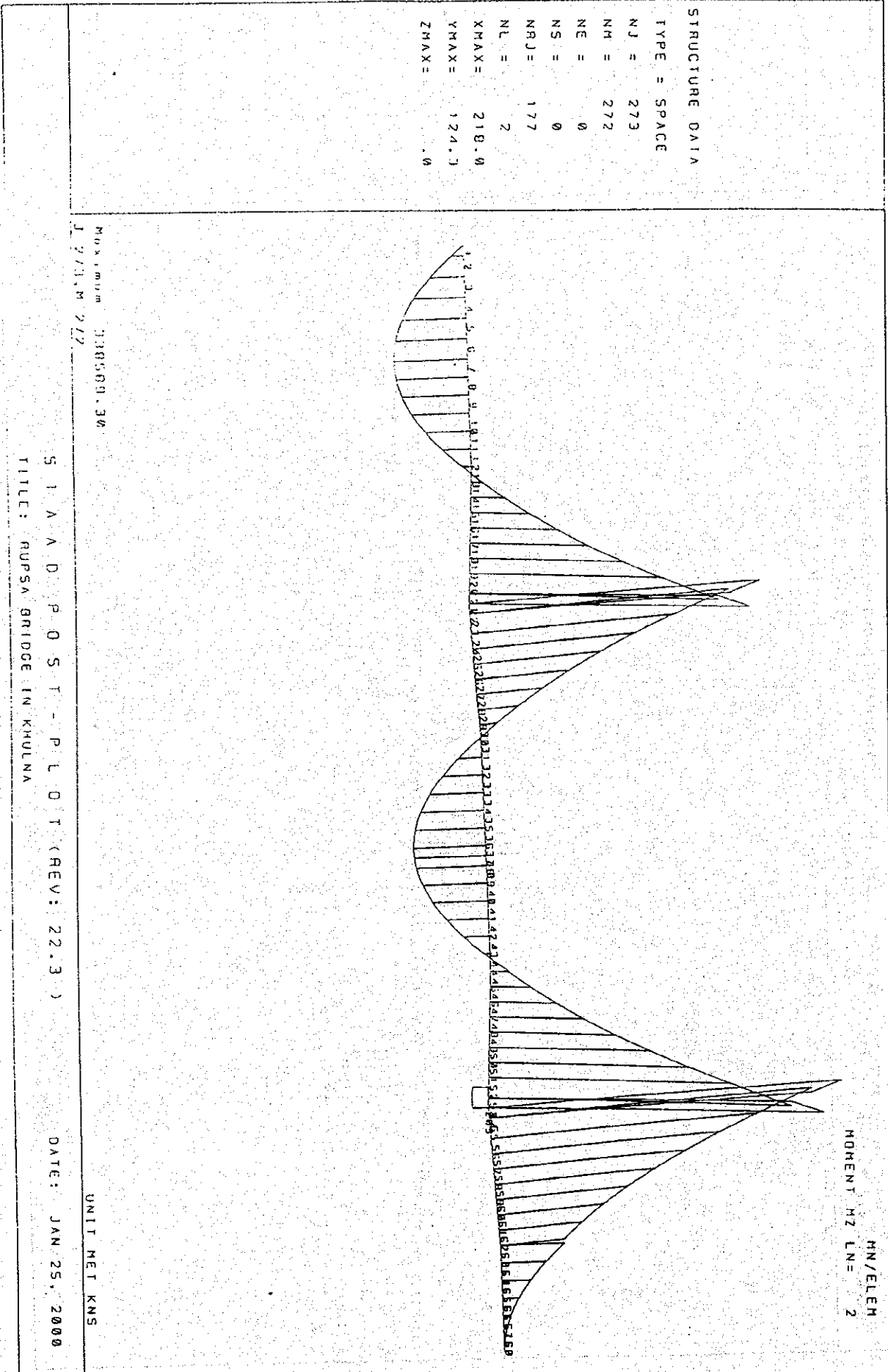


S I A A D P O S T - P L O T (REV: 22.3)
 TITLE: RUPSA BRIDGE IN KHULNA

DATE: JAN 25, 2000

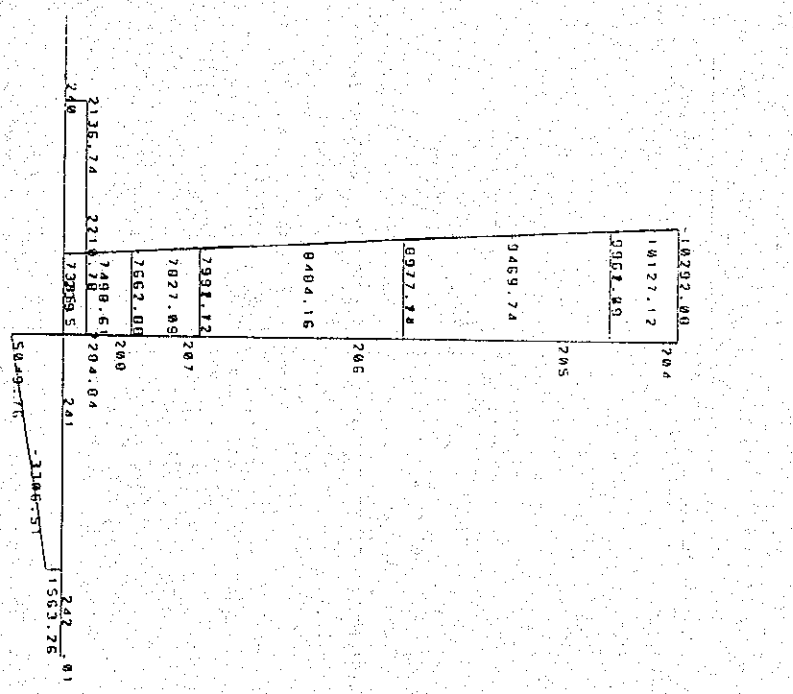
UNIT MET KNS

MN/ELEM
 MOMENTI MZ LN= 1



STRUCTURE DATA
 TYPE = SPACE
 NJ = 273
 NM = 272
 NE = 0
 NS = 0
 NRJ = 177
 NL = 2
 XMAX = 210.0
 YMAX = 124.3
 ZMAX = 0

Maximum 10297.00
 1.271M 217



S I A A D P O S T - P L O F (REV: 22.3)
 TITLE: RUPSA BRIDGE IN KHULNA

DATE: JAN 25, 2000

UNIT: MET KNS

MOMENT MZ LN= 1
 MN/ELEM

STRUCTURE DATA

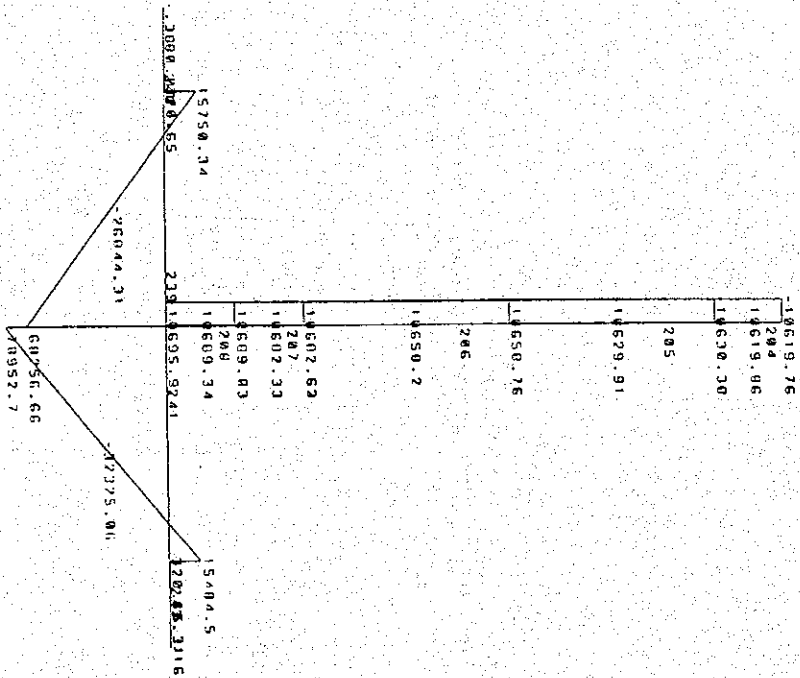
TYPE = SPACE
 NJ = 273
 NH = 272
 NE = 0
 NS = 0
 NRJ = 177
 NL = 2
 XMAX = 210.0
 YMAX = 124.3
 ZMAX = 0

Maximum / 80952.70
 1.273, M. 2/2

S I A A D P O S T - P L O T (REV: 22.3)
 TITLE: RUUSA BRIDGE IN KHULNA

DATE: JAN 25, 2000

UNIT MET KNS



HN/ELEH
 MOMENT MZ LNE = 2

STRUCTURE DATA

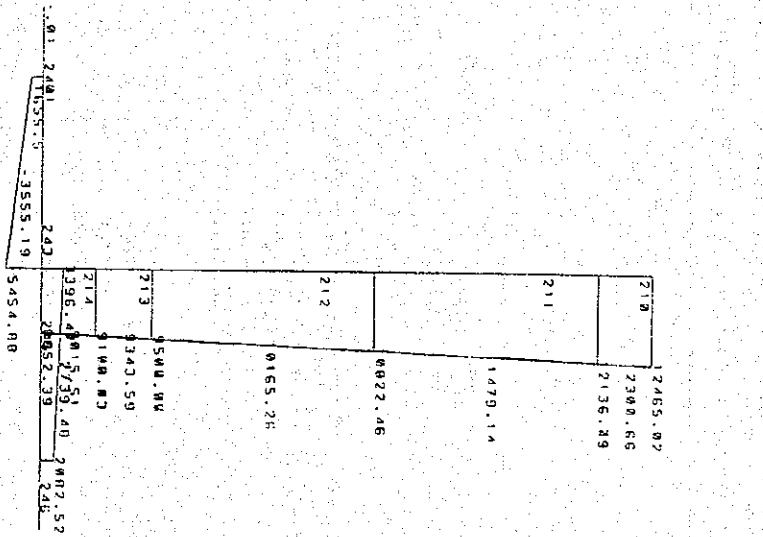
TYPE = SPACE
 NJ = 273
 NM = 272
 NE = 0
 NS = 0
 NRJ = 177
 NL = 2
 XMAX = 210.0
 YMAX = 124.3
 ZMAX = 0

Maximum: 12465.02
 1/27/11 M 2/12

S T A A D P O S T - P L O T (REV: 22.3)
 TITLE: RUPSA BRIDGE IN KHULNA

DATE: JAN 25, 2000

UNIT MET KNS



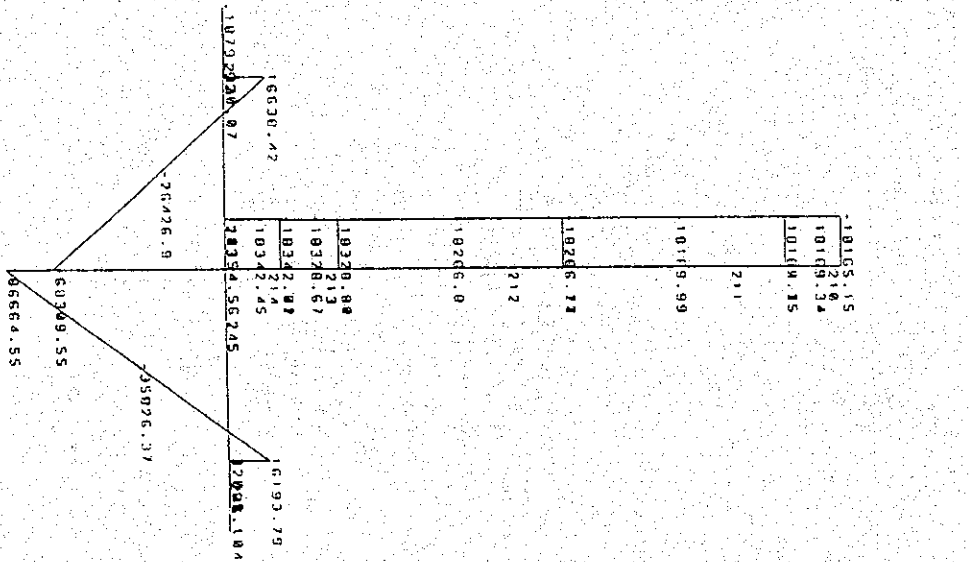
STRUCTURE DATA
 TYPE = SPACE
 NJ = 273
 NH = 272
 NE = 0
 NS = 0
 NRJ = 177
 NL = 2
 XMAX = 218.0
 YMAX = 124.3
 ZMAX = .0

Maximum 86664.55
 J=271, M=272

STANDARD PLOT (REV: 22.3)
 TITLE: GUPSA BRIDGE IN KHULNA

DATE: JAN 25, 2000

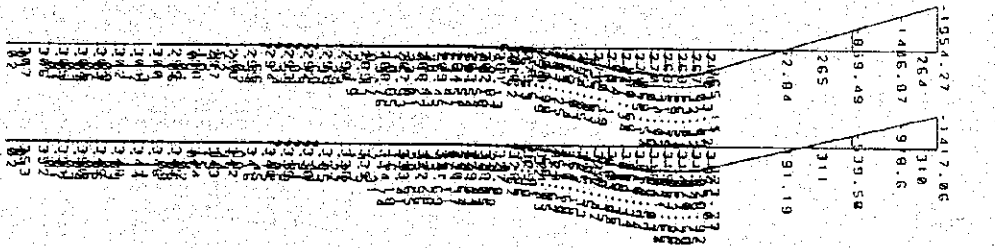
UNIT MET KNS



STRUCTURE DATA

TYPE = SPACE
 NJ = 273
 NM = 272
 NE = 0
 NS = 0
 NRJ = 177
 NL = 2
 XMAX = 210.0
 YMAX = 124.3
 ZMAX = 0

Maximum 1954.27
 J-273.M.777



MN/ELEM
 MOMENT MZ LNF 1

UNIT MET KNS

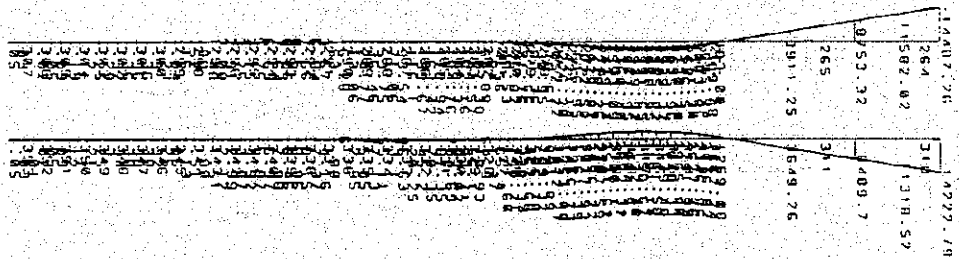
S T A A D P O S T - P L O T (REV: 22.3)
 TITLE: RUPSA BRIDGE IN KHULNA

DATE: JAN 25, 2000

STRUCTURE DATA

TYPE = SPACE
 NJ = 273
 NM = 272
 NE = 0
 NS = 0
 NRJ = 177
 NL = 2
 XMAX = 210.0
 YMAX = 124.3
 ZMAX = 0

Maximum 14487.26
 J 273 M 272



MOMENT MZ LN = 2
 MN/ELEM

S I A A D P O S T - P L O T (REV: 22.3)
 TITLE: HUNSA BRIDGE IN KHUINA

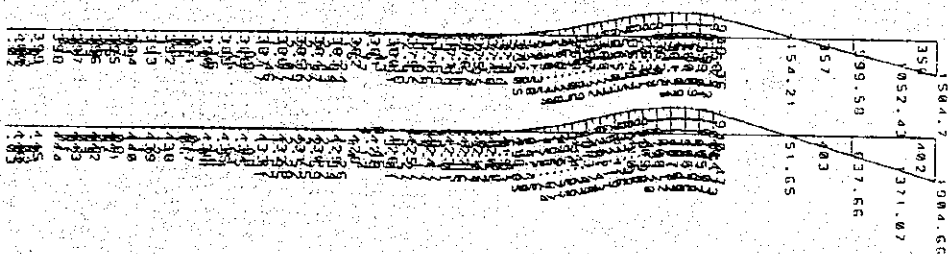
DATE: JAN 25, 2000

UNIT MET KNS

STRUCTURE DATA

TYPE = SPAC
 NJ = 273
 NM = 272
 NE = 0
 NS = 0
 NRJ = 177
 NL = 2
 XMAX = 210.0
 YMAX = 124.7
 ZMAX = .0

Maximum 1904.66
 J 273.M 272



MOMENT: MN/ELEM
 UNIT: KNS

STANDARD PLOT - PLOT (REV: 22.3)
 TITLE: RUPSA BRIDGE IN KHULNA

DATE: JAN 25, 2000

UNIT: MET KNS

STRUCTURE DATA

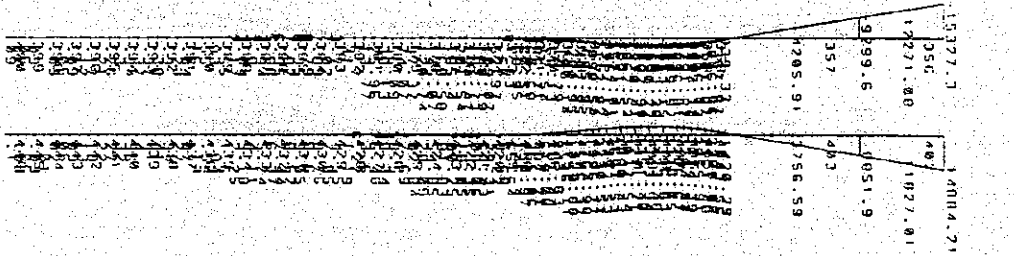
TYPE = SPACE
 NJ = 273
 NH = 272
 NE = 0
 NS = 0
 NRJ = 177
 NL = 2
 XMAX = 218.0
 YMAX = 124.3
 ZMAX = .0

Maximum 1.027.10
 1.273.77

S I A A D P O S T - P L O T (REV: 22.3)
 TITLE: HUESA BRIDGE IN KHOLNA

DATE: JAN 25, 2000

UNIT MET KNS



THE STUDY ON THE CONSTRUCTION OF THE BRIDGE OVER THE RIVER RUPSA IN KHULNA, PHASE - 2

Job No. :

Designed by :

Checked by :

Date :

January 26, 2000

LOADS

LOAD 1 : SELFWEIGHT OF CLOSURE SEGMENT AT SPAN 2

37.38 UNIFORM LOADS

LOAD 2 : SELFWEIGHT OF THE STRUCTURE

SELFWEIGHT Y - 1

THE STUDY ON THE CONSTRUCTION OF THE BRIDGE OVER THE RIVER RUPSA IN KHULNA, PHASE - 2

Job No. : Designed by : Checked by : Date : January 26, 2000

DEAD LOAD ANALYSIS

MEMB	LOAD	NODE	AXIAL	SHEAR-Y	SHEAR-Z	TORSION	MOM-Y	MOM-Z
1	1	1	-2.47	-87.44	0.00	0.00	0.00	-0.01
		2	2.47	87.44	0.00	0.00	0.00	-174.95
	2	1	177.02	6,210.59	0.00	0.00	0.00	-0.14
		2	-161.07	-5,650.86	0.00	0.00	0.00	11,867.66
2	1	2	-2.63	-87.42	0.00	0.00	0.00	174.94
		3	2.63	87.42	0.00	0.00	0.00	-524.78
	2	2	169.49	5,650.48	0.00	0.00	0.00	-11,867.67
		3	-135.91	-4,531.03	0.00	0.00	0.00	32,242.46
3	1	3	-2.63	-87.42	0.00	0.00	0.00	524.81
		4	2.63	87.42	0.00	0.00	0.00	-874.64
	2	3	135.94	4,531.29	0.00	0.00	0.00	-32,242.28
		4	-102.35	-3,411.84	0.00	0.00	0.00	48,137.50
4	1	4	-2.62	-87.43	0.00	0.00	0.00	874.66
		5	2.62	87.43	0.00	0.00	0.00	-1,224.50
	2	4	102.38	3,411.46	0.00	0.00	0.00	-48,137.09
		5	-68.80	-2,292.01	0.00	0.00	0.00	59,551.50
5	1	5	-2.61	-87.42	0.00	0.00	0.00	1,224.54
		6	2.61	87.42	0.00	0.00	0.00	-1,574.34
	2	5	68.77	2,292.37	0.00	0.00	0.00	-59,551.84
		6	-35.18	-1,172.92	0.00	0.00	0.00	66,485.43
6	1	6	-2.62	-87.42	0.00	0.00	0.00	1,574.36
		7	2.62	87.42	0.00	0.00	0.00	-1,924.24
	2	6	35.16	1,171.83	0.00	0.00	0.00	-66,487.45
		7	-1.58	-52.37	0.00	0.00	0.00	68,937.84
7	1	7	-2.62	-87.40	0.00	0.00	0.00	1,924.25
		8	2.62	87.40	0.00	0.00	0.00	-2,230.37
	2	7	1.55	53.32	0.00	0.00	0.00	-68,940.19
		8	27.84	926.21	0.00	0.00	0.00	67,410.46
8	1	8	-2.64	-87.39	0.00	0.00	0.00	2,230.41
		9	2.64	87.39	0.00	0.00	0.00	-2,536.44
	2	8	-27.71	-925.25	0.00	0.00	0.00	-67,408.74
		9	57.09	1,904.77	0.00	0.00	0.00	62,455.26
9	1	9	-2.63	-87.40	0.00	0.00	0.00	2,536.59
		10	2.63	87.40	0.00	0.00	0.00	-2,842.53
	2	9	-57.14	-1,904.49	0.00	0.00	0.00	-62,450.84
		10	86.53	2,884.02	0.00	0.00	0.00	54,067.15
10	1	10	-2.63	-87.35	0.00	0.00	0.00	2,842.75
		11	2.63	87.35	0.00	0.00	0.00	-3,148.58
	2	10	-86.51	-2,884.94	0.00	0.00	0.00	-54,065.38
		11	115.90	3,864.46	0.00	0.00	0.00	42,247.59
11	1	11	-2.62	-87.40	0.00	0.00	0.00	3,148.71
		12	2.62	87.40	0.00	0.00	0.00	-3,454.87
	2	11	-115.96	-3,864.34	0.00	0.00	0.00	-42,248.09
		12	145.35	4,843.87	0.00	0.00	0.00	27,001.36
12	1	12	-2.64	-87.47	0.00	0.00	0.00	3,454.80
		13	2.64	87.47	0.00	0.00	0.00	-3,761.08
	2	12	-145.37	-4,844.77	0.00	0.00	0.00	-27,000.58
		13	174.75	5,824.30	0.00	0.00	0.00	8,324.46
13	1	13	2.21	-87.44	0.00	0.00	0.00	3,760.95
		14	-2.21	87.44	0.00	0.00	0.00	-4,023.54
	2	13	147.37	-5,824.02	0.00	0.00	0.00	-8,323.69
		14	-169.41	6,686.29	0.00	0.00	0.00	-10,448.31
14	1	14	2.28	-87.48	0.00	0.00	0.00	4,023.22
		15	-2.28	87.48	0.00	0.00	0.00	-4,285.98

THE STUDY ON THE CONSTRUCTION OF THE BRIDGE OVER THE RIVER RUPSA IN KHULNA, PHASE - 2

Job No. :	Designed by :	Checked by :	Date :	January 26, 2000				
	2	14	173.89	-6,686.64	0.00	0.00	0.00	10,449.16
		15	-197.46	7,593.48	0.00	0.00	0.00	-31,877.62
15	1	15	2.30	-87.40	0.00	0.00	0.00	4,285.88
		16	-2.30	87.40	0.00	0.00	0.00	-4,548.14
	2	15	199.99	-7,593.78	0.00	0.00	0.00	31,877.53
		16	-225.00	8,543.61	0.00	0.00	0.00	-36,092.36
16	1	16	2.33	-87.45	0.00	0.00	0.00	4,548.15
		17	-2.33	87.45	0.00	0.00	0.00	-4,810.57
	2	16	227.79	-8,542.46	0.00	0.00	0.00	36,093.73
		17	-254.22	9,533.68	0.00	0.00	0.00	-33,216.98
17	1	17	2.32	-87.42	0.00	0.00	0.00	4,810.59
		18	-2.32	87.42	0.00	0.00	0.00	-5,073.00
	2	17	254.24	-9,533.09	0.00	0.00	0.00	83,216.77
		18	-281.74	10,566.06	0.00	0.00	0.00	-113,382.60
18	1	18	2.33	-87.44	0.00	0.00	0.00	5,073.03
		19	-2.33	87.44	0.00	0.00	0.00	-5,335.32
	2	18	281.71	-10,565.19	0.00	0.00	0.00	113,381.80
		19	-310.22	11,634.32	0.00	0.00	0.00	-146,690.70
19	1	19	2.27	-87.27	0.00	0.00	0.00	5,335.68
		20	-2.27	87.27	0.00	0.00	0.00	-5,597.54
	2	19	302.49	-11,634.38	0.00	0.00	0.00	146,691.90
		20	-331.24	12,740.08	0.00	0.00	0.00	-183,268.20
20	1	20	2.21	-87.43	0.00	0.00	0.00	5,597.70
		21	-2.21	87.43	0.00	0.00	0.00	-5,947.64
	2	20	321.71	-12,739.65	0.00	0.00	0.00	183,269.20
		21	-360.29	14,267.88	0.00	0.00	0.00	-237,304.00
21	1	21	1.04	-87.51	0.00	0.00	0.00	5,947.60
		22	-1.04	87.51	0.00	0.00	0.00	-6,122.58
	2	21	178.32	-14,271.99	0.00	0.00	0.00	237,309.80
		22	-188.06	15,051.13	0.00	0.00	0.00	-266,626.80
22	1	22	263.02	598.00	0.00	0.00	0.00	17,158.16
		23	-263.02	-598.00	0.00	0.00	0.00	-15,959.02
	2	22	1,103.68	15,217.87	0.00	0.00	0.00	277,224.00
		23	-1,047.19	-14,438.74	0.00	0.00	0.00	-247,490.80
23	1	23	270.56	594.51	0.00	0.00	0.00	15,959.07
		24	-270.56	-594.51	0.00	0.00	0.00	-13,572.15
	2	23	1,230.06	14,426.60	0.00	0.00	0.00	247,488.20
		24	-1,099.78	-12,898.38	0.00	0.00	0.00	-192,637.00
24	1	24	271.00	594.37	0.00	0.00	0.00	13,572.28
		25	-271.00	-594.37	0.00	0.00	0.00	-11,782.39
	2	24	1,109.45	12,896.76	0.00	0.00	0.00	192,637.30
		25	-1,014.36	-11,791.06	0.00	0.00	0.00	-155,465.70
25	1	25	271.40	594.28	0.00	0.00	0.00	11,782.56
		26	-271.40	-594.28	0.00	0.00	0.00	-9,992.96
	2	25	1,021.87	11,789.56	0.00	0.00	0.00	155,465.20
		26	-929.21	-10,720.44	0.00	0.00	0.00	-121,566.90
26	1	26	271.41	594.29	0.00	0.00	0.00	9,992.29
		27	-271.41	-594.29	0.00	0.00	0.00	-8,203.41
	2	26	929.43	10,720.68	0.00	0.00	0.00	121,564.30
		27	-840.08	-9,689.71	0.00	0.00	0.00	-90,831.01
27	1	27	271.39	594.10	0.00	0.00	0.00	8,203.45
		28	-271.39	-594.10	0.00	0.00	0.00	-6,414.67
	2	27	840.35	9,692.27	0.00	0.00	0.00	90,833.28
		28	-754.44	-8,701.05	0.00	0.00	0.00	-63,130.22
28	1	28	271.21	594.12	0.00	0.00	0.00	6,414.32
		29	-271.21	-594.12	0.00	0.00	0.00	-4,624.87
	2	28	751.47	8,700.20	0.00	0.00	0.00	63,136.96
		29	-669.46	-7,750.37	0.00	0.00	0.00	-38,362.94
29	1	29	270.99	594.35	0.00	0.00	0.00	4,624.75
		30	-270.99	-594.35	0.00	0.00	0.00	-2,835.06

THE STUDY ON THE CONSTRUCTION OF THE BRIDGE OVER THE RIVER RUPSA IN KHULNA, PHASE - 2

Job No. :	Designed by :	Checked by :	Date :	January 26, 2000				
	2	29	666.60	7,749.82	0.00	0.00	0.00	38,364.96
		30	-588.61	-6,842.98	0.00	0.00	0.00	-16,387.34
30	1	30	270.62	594.57	0.00	0.00	0.00	2,834.99
		31	-270.62	-594.57	0.00	0.00	0.00	-1,044.87
	2	30	584.12	6,842.40	0.00	0.00	0.00	16,386.01
		31	-510.34	-5,980.13	0.00	0.00	0.00	2,919.50
31	1	31	237.43	608.44	0.00	0.00	0.00	1,044.57
		32	-237.43	-608.44	0.00	0.00	0.00	1,086.16
	2	31	180.19	6,000.74	0.00	0.00	0.00	-2,921.83
		32	-150.80	-5,021.21	0.00	0.00	0.00	22,219.19
32	1	32	237.44	608.56	0.00	0.00	0.00	-1,086.35
		33	-237.44	-608.56	0.00	0.00	0.00	3,217.41
	2	32	150.93	5,021.36	0.00	0.00	0.00	-22,218.07
		33	-121.55	-1,042.04	0.00	0.00	0.00	38,087.47
33	1	33	237.43	608.54	0.00	0.00	0.00	-3,217.57
		34	-237.43	-608.54	0.00	0.00	0.00	5,348.19
	2	33	121.48	1,041.92	0.00	0.00	0.00	-38,085.04
		34	-92.10	-3,062.39	0.00	0.00	0.00	50,523.95
34	1	34	237.43	608.52	0.00	0.00	0.00	-5,348.45
		35	-237.43	-608.52	0.00	0.00	0.00	7,479.41
	2	34	92.12	3,062.14	0.00	0.00	0.00	-50,522.89
		35	-62.73	-2,082.61	0.00	0.00	0.00	59,530.33
35	1	35	237.44	608.72	0.00	0.00	0.00	-7,479.03
		36	-237.44	-608.72	0.00	0.00	0.00	9,610.59
	2	35	62.47	2,082.43	0.00	0.00	0.00	-59,528.45
		36	-33.09	-1,102.91	0.00	0.00	0.00	65,105.33
36	1	36	237.43	608.67	0.00	0.00	0.00	-9,610.00
		37	-237.43	-608.67	0.00	0.00	0.00	11,741.34
	2	36	33.24	1,102.37	0.00	0.00	0.00	-65,105.48
		37	-3.86	-122.85	0.00	0.00	0.00	67,251.73
37	1	37	237.45	608.75	0.00	0.00	0.00	-11,741.78
		38	-220.38	-39.70	0.00	0.00	0.00	12,389.39
	2	37	3.65	115.41	0.00	0.00	0.00	-67,258.25
		38	13.14	444.32	0.00	0.00	0.00	66,934.15
38	1	38	220.34	38.52	0.00	0.00	0.00	-12,390.73
		39	-203.27	530.52	0.00	0.00	0.00	11,897.90
	2	38	-12.70	-431.54	0.00	0.00	0.00	-66,934.75
		39	29.49	991.27	0.00	0.00	0.00	65,306.29
39	1	39	203.29	-529.59	0.00	0.00	0.00	-11,899.14
		40	-203.29	529.59	0.00	0.00	0.00	10,044.62
	2	39	-29.59	-997.28	0.00	0.00	0.00	-65,306.24
		40	58.98	1,976.80	0.00	0.00	0.00	60,299.73
40	1	40	203.29	-529.80	0.00	0.00	0.00	-10,044.78
		41	-203.29	529.80	0.00	0.00	0.00	8,190.22
	2	40	-59.06	-1,975.87	0.00	0.00	0.00	-60,302.36
		41	88.45	2,955.39	0.00	0.00	0.00	51,666.79
41	1	41	203.29	-529.65	0.00	0.00	0.00	-8,190.04
		42	-203.29	529.65	0.00	0.00	0.00	6,335.96
	2	41	-88.52	-2,955.89	0.00	0.00	0.00	-51,669.30
		42	117.91	3,935.42	0.00	0.00	0.00	39,604.59
42	1	42	203.29	-529.45	0.00	0.00	0.00	-6,335.41
		43	-203.29	529.45	0.00	0.00	0.00	4,481.35
	2	42	-117.83	-3,934.77	0.00	0.00	0.00	-39,605.36
		43	147.22	4,914.29	0.00	0.00	0.00	24,113.60
43	1	43	203.29	-529.51	0.00	0.00	0.00	-4,481.01
		44	-203.29	529.51	0.00	0.00	0.00	2,626.67
	2	43	-147.28	-4,914.15	0.00	0.00	0.00	-24,112.85
		44	176.67	5,893.67	0.00	0.00	0.00	5,191.12
44	1	44	203.29	-529.51	0.00	0.00	0.00	-2,626.45
		45	-203.29	529.51	0.00	0.00	0.00	772.04

THE STUDY ON THE CONSTRUCTION OF THE BRIDGE OVER THE RIVER RUPSA IN KHULNA, PHASE - 2

Job No.:	Designed by:	Checked by:	Date:	January 26, 2000				
	2	44	-176.59	-5,892.99	0.00	0.00	0.00	-5,191.53
		45	205.97	6,872.52	0.00	0.00	0.00	-17,159.63
45	1	45	232.25	-517.39	0.00	0.00	0.00	-771.84
		46	-232.25	517.39	0.00	0.00	0.00	-781.29
	2	45	174.40	-6,874.66	0.00	0.00	0.00	17,159.66
		46	-196.24	7,736.93	0.00	0.00	0.00	-39,085.55
46	1	46	232.61	-517.38	0.00	0.00	0.00	781.36
		47	-232.61	517.38	0.00	0.00	0.00	-2,334.27
	2	46	201.40	-7,737.05	0.00	0.00	0.00	39,082.97
		47	-224.98	8,643.89	0.00	0.00	0.00	-63,665.14
47	1	47	232.78	-517.30	0.00	0.00	0.00	2,334.38
		48	-232.78	517.30	0.00	0.00	0.00	-3,886.70
	2	47	217.85	-8,644.69	0.00	0.00	0.00	63,663.78
		48	-252.86	9,594.51	0.00	0.00	0.00	-91,031.05
48	1	48	232.96	-517.27	0.00	0.00	0.00	3,886.86
		49	-232.96	517.27	0.00	0.00	0.00	-5,439.52
	2	48	256.00	-9,594.33	0.00	0.00	0.00	91,028.03
		49	-282.43	10,585.55	0.00	0.00	0.00	-121,307.30
49	1	49	232.95	-517.10	0.00	0.00	0.00	5,439.22
		50	-232.95	517.10	0.00	0.00	0.00	-6,991.94
	2	49	282.48	-10,583.81	0.00	0.00	0.00	121,308.10
		50	-309.98	11,614.78	0.00	0.00	0.00	-154,619.10
50	1	50	232.95	-517.24	0.00	0.00	0.00	6,991.61
		51	-232.95	517.24	0.00	0.00	0.00	-8,544.36
	2	50	310.03	-11,617.20	0.00	0.00	0.00	154,617.80
		51	-338.54	12,686.33	0.00	0.00	0.00	-191,084.30
51	1	51	232.60	-517.30	0.00	0.00	0.00	8,544.04
		52	-232.60	517.30	0.00	0.00	0.00	-10,097.08
	2	51	330.08	-12,684.89	0.00	0.00	0.00	191,082.40
		52	-358.83	13,790.59	0.00	0.00	0.00	-230,807.50
52	1	52	232.21	-517.54	0.00	0.00	0.00	10,097.15
		53	-232.21	517.54	0.00	0.00	0.00	-12,168.01
	2	52	348.27	-13,790.09	0.00	0.00	0.00	230,807.70
		53	-386.86	15,318.31	0.00	0.00	0.00	-289,044.60
53	1	53	225.60	-520.20	0.00	0.00	0.00	12,168.36
		54	-225.60	520.20	0.00	0.00	0.00	-13,209.00
	2	53	191.72	-15,320.64	0.00	0.00	0.00	289,047.40
		54	-201.46	16,099.78	0.00	0.00	0.00	-320,468.80
54	1	54	0.00	0.04	0.00	0.00	0.00	0.00
		55	0.00	-0.04	0.00	0.00	0.00	0.01
	2	54	1,094.73	-15,099.22	0.00	0.00	0.00	338,589.30
		55	-1,038.24	14,320.09	0.00	0.00	0.00	-309,094.00
55	1	55	0.00	0.00	0.00	0.00	0.00	-0.03
		56	0.00	0.00	0.00	0.00	0.00	0.06
	2	55	1,219.38	-14,304.13	0.00	0.00	0.00	309,097.80
		56	-1,089.10	12,775.90	0.00	0.00	0.00	-254,737.10
56	1	56	0.01	-0.03	0.00	0.00	0.00	-0.12
		57	-0.01	0.03	0.00	0.00	0.00	-0.06
	2	56	1,098.67	-12,773.80	0.00	0.00	0.00	254,738.60
		57	-1,003.58	11,668.10	0.00	0.00	0.00	-217,932.20
57	1	57	-0.03	-0.01	0.00	0.00	0.00	-0.23
		58	0.03	0.01	0.00	0.00	0.00	-0.09
	2	57	1,011.25	-11,668.98	0.00	0.00	0.00	217,934.00
		58	-918.59	10,599.85	0.00	0.00	0.00	-184,401.60
58	1	58	-0.02	-0.08	0.00	0.00	0.00	-0.24
		59	0.02	0.08	0.00	0.00	0.00	-0.09
	2	58	918.34	-10,599.26	0.00	0.00	0.00	184,401.30
		59	-828.99	9,568.30	0.00	0.00	0.00	-154,031.60
59	1	59	0.00	0.16	0.00	0.00	0.00	0.13
		60	0.00	-0.16	0.00	0.00	0.00	0.15

THE STUDY ON THE CONSTRUCTION OF THE BRIDGE OVER THE RIVER RUPSA IN KHULNA, PHASE - 2

Job No. :	Designed by :	Checked by :	Date :	January 26, 2000				
	2	59	829.41	9,568.46	0.00	0.00	0.00	154,032.40
		60	-743.51	-8,577.23	0.00	0.00	0.00	-126,704.90
60	1	60	0.01	0.08	0.00	0.00	0.00	0.25
		61	-0.01	-0.08	0.00	0.00	0.00	0.20
	2	60	740.33	8,575.17	0.00	0.00	0.00	126,705.40
		61	-658.33	-7,625.34	0.00	0.00	0.00	-102,303.00
61	1	61	0.00	0.12	0.00	0.00	0.00	0.00
		62	0.00	-0.12	0.00	0.00	0.00	0.03
	2	61	656.17	7,627.73	0.00	0.00	0.00	102,303.10
		62	-578.19	-6,720.89	0.00	0.00	0.00	-80,692.17
62	1	62	0.01	0.12	0.00	0.00	0.00	0.00
		63	-0.01	-0.12	0.00	0.00	0.00	0.03
	2	62	573.32	6,720.36	0.00	0.00	0.00	80,694.26
		63	-499.74	-5,858.09	0.00	0.00	0.00	-61,748.39
63	1	63	0.01	0.03	0.00	0.00	0.00	0.10
		64	-0.01	-0.03	0.00	0.00	0.00	0.03
	2	63	176.46	5,876.36	0.00	0.00	0.00	61,746.63
		64	-147.08	-4,896.83	0.00	0.00	0.00	-42,883.63
64	1	64	-0.01	0.08	0.00	0.00	0.00	0.03
		65	0.01	-0.08	0.00	0.00	0.00	0.10
	2	64	147.10	4,899.93	0.00	0.00	0.00	42,883.85
		65	-117.71	-3,920.40	0.00	0.00	0.00	-27,442.76
65	1	65	0.00	0.12	0.00	0.00	0.00	0.29
		66	0.00	-0.12	0.00	0.00	0.00	0.22
	2	65	117.32	3,918.50	0.00	0.00	0.00	27,444.40
		66	-88.14	-2,938.98	0.00	0.00	0.00	-15,439.10
66	1	66	0.01	0.01	0.00	0.00	0.00	-0.06
		67	-0.01	-0.01	0.00	0.00	0.00	0.08
	2	66	87.91	2,939.33	0.00	0.00	0.00	15,437.48
		67	-58.53	-1,959.81	0.00	0.00	0.00	-6,862.16
67	1	67	0.00	-0.07	0.00	0.00	0.00	-0.12
		68	0.00	0.07	0.00	0.00	0.00	-0.14
	2	67	58.59	1,958.47	0.00	0.00	0.00	6,859.34
		68	-29.21	-978.94	0.00	0.00	0.00	-1,717.70
68	1	68	0.00	0.14	0.00	0.00	0.00	-0.01
		69	0.00	-0.14	0.00	0.00	0.00	0.13
	2	68	29.32	981.50	0.00	0.00	0.00	1,719.05
		69	0.06	-1.97	0.00	0.00	0.00	1.40
204	1	204	702.81	-219.95	0.00	0.00	0.00	-10,292.08
		205	-702.81	219.95	0.00	0.00	0.00	9,961.79
	2	204	31,658.73	0.13	0.00	0.00	0.00	-10,619.76
		205	-32,252.73	-0.13	0.00	0.00	0.00	10,630.39
205	1	205	702.81	-219.05	0.00	0.00	0.00	-9,962.60
		206	-702.81	219.05	0.00	0.00	0.00	8,977.24
	2	205	32,252.60	-0.20	0.00	0.00	0.00	-10,630.36
		206	-33,818.60	0.20	0.00	0.00	0.00	10,638.76
206	1	206	702.82	-219.09	0.00	0.00	0.00	-8,977.11
		207	-702.82	219.09	0.00	0.00	0.00	7,991.72
	2	206	33,818.64	-0.24	0.00	0.00	0.00	-10,638.75
		207	-35,384.64	0.24	0.00	0.00	0.00	10,682.52
207	1	207	702.82	-220.02	0.00	0.00	0.00	-7,992.10
		208	-702.82	220.02	0.00	0.00	0.00	7,662.88
	2	207	35,384.29	-0.40	0.00	0.00	0.00	-10,682.63
		208	-35,978.28	0.40	0.00	0.00	0.00	10,689.20
210	1	210	523.25	219.15	0.00	0.00	0.00	12,465.02
		211	-523.25	-219.15	0.00	0.00	0.00	-12,136.39
	2	210	32,585.61	5.59	0.00	0.00	0.00	-18,165.15
		211	-33,179.61	-5.59	0.00	0.00	0.00	18,192.10
211	1	211	523.24	219.10	0.00	0.00	0.00	12,136.43
		212	-523.24	-219.10	0.00	0.00	0.00	-10,822.45

THE STUDY ON THE CONSTRUCTION OF THE BRIDGE OVER THE RIVER RUPSA IN KHULNA, PHASE - 2

Job No. :	Designed by :	Checked by :	Date :	January 26, 2000				
	2	211	33,179.59	0.21	0.00	0.00	0.00	-18,189.35
		212	-35,267.59	-0.21	0.00	0.00	0.00	18,266.14
212	1	212	523.24	219.07	0.00	0.00	0.00	10,822.46
		213	-523.24	-219.07	0.00	0.00	0.00	-9,508.47
	2	212	35,267.45	0.19	0.00	0.00	0.00	-18,266.22
		213	-37,355.45	-0.19	0.00	0.00	0.00	18,328.68
213	1	213	523.23	218.62	0.00	0.00	0.00	9,507.56
		214	-523.23	-218.62	0.00	0.00	0.00	-9,180.13
	2	213	37,355.80	0.43	0.00	0.00	0.00	-18,328.34
		214	-37,949.81	-0.43	0.00	0.00	0.00	18,342.61
239	1	209	121.66	31.19	0.00	0.00	0.00	2,284.34
		240	-121.66	-31.19	0.00	0.00	0.00	-2,136.74
	2	209	645.60	-17,188.39	0.00	0.00	0.00	-68,256.66
		240	-645.60	18,181.93	0.00	0.00	0.00	-15,750.34
240	1	240	0.08	0.00	0.00	0.00	0.00	0.00
		241	-0.08	0.00	0.00	0.00	0.00	0.00
	2	240	0.01	366.44	0.00	0.00	0.00	320.65
		241	-0.01	-0.40	0.00	0.00	0.00	0.38
241	1	209	-97.43	-734.00	0.00	0.00	0.00	-5,049.76
		242	97.43	734.00	0.00	0.00	0.00	1,263.26
	2	209	645.39	-19,384.30	0.00	0.00	0.00	-78,952.70
		242	-645.39	20,377.84	0.00	0.00	0.00	-15,484.30
242	1	242	-0.11	0.00	0.00	0.00	0.00	0.00
		243	0.11	0.00	0.00	0.00	0.00	-0.01
	2	242	0.03	365.62	0.00	0.00	0.00	320.16
		243	-0.03	0.42	0.00	0.00	0.00	-0.16
243	1	213	-100.51	-799.87	0.00	0.00	0.00	-5,454.88
		244	100.51	799.87	0.00	0.00	0.00	1,655.50
	2	213	679.15	-17,386.38	0.00	0.00	0.00	-68,309.55
		244	-679.15	18,379.92	0.00	0.00	0.00	-16,658.42
244	1	244	-0.01	0.01	0.00	0.00	0.00	0.01
		245	0.01	-0.01	0.00	0.00	0.00	0.01
	2	244	-0.01	365.97	0.00	0.00	0.00	320.07
		245	0.01	0.07	0.00	0.00	0.00	-0.18
245	1	215	118.59	276.63	0.00	0.00	0.00	3,396.47
		246	-118.59	-276.63	0.00	0.00	0.00	-2,082.52
	2	215	679.37	-21,157.18	0.00	0.00	0.00	-86,664.55
		246	-679.37	22,150.72	0.00	0.00	0.00	-16,193.79
246	1	246	0.01	0.00	0.00	0.00	0.00	0.00
		247	-0.01	0.00	0.00	0.00	0.00	0.00
	2	246	0.00	365.91	0.00	0.00	0.00	320.20
		247	0.00	0.13	0.00	0.00	0.00	-0.04
263	1	240	-31.18	-121.74	0.00	0.00	0.00	-2,136.72
		264	31.18	121.74	0.00	0.00	0.00	1,954.23
	2	240	18,547.92	-645.57	0.00	0.00	0.00	-15,429.99
		264	-18,861.67	645.57	0.00	0.00	0.00	14,487.27
264	1	264	-31.18	-121.65	0.00	0.00	0.00	-1,954.27
		265	31.18	121.65	0.00	0.00	0.00	859.49
	2	264	18,861.69	-645.61	0.00	0.00	0.00	-14,487.26
		265	-20,744.18	645.61	0.00	0.00	0.00	8,753.32
265	1	265	-31.18	-121.64	0.00	0.00	0.00	-859.49
		266	31.18	121.64	0.00	0.00	0.00	-965.11
	2	265	20,744.18	-645.61	0.00	0.00	0.00	-8,753.32
		266	-23,881.67	645.61	0.00	0.00	0.00	-983.08
266	1	266	-31.19	-90.62	0.00	0.00	0.00	965.15
		267	31.19	90.62	0.00	0.00	0.00	-1,101.05
	2	266	23,881.75	-541.96	0.00	0.00	0.00	983.01
		267	-24,195.49	541.96	0.00	0.00	0.00	-1,805.90
267	1	267	-31.18	-41.59	0.00	0.00	0.00	1,101.13
		268	31.18	41.59	0.00	0.00	0.00	-1,163.47

THE STUDY ON THE CONSTRUCTION OF THE BRIDGE OVER THE RIVER RUPSA IN KHULNA, PHASE - 2

Job No. :	Designed by :	Checked by :	Date :	January 26, 2000				
	2	267	24,193.38	-370.82	0.00	0.00	0.00	1,805.74
		268	-24,509.12	370.82	0.00	0.00	0.00	-2,371.38
268	1	268	-31.18	-4.01	0.00	0.00	0.00	1,163.50
		269	31.18	4.01	0.00	0.00	0.00	-1,169.51
	2	268	24,509.08	-233.67	0.00	0.00	0.00	2,371.24
		269	-24,822.82	233.67	0.00	0.00	0.00	-2,730.31
269	1	269	-31.18	23.63	0.00	0.00	0.00	1,169.53
		270	31.18	-23.63	0.00	0.00	0.00	-1,134.02
	2	269	24,822.80	-127.38	0.00	0.00	0.00	2,730.28
		270	-25,136.54	127.38	0.00	0.00	0.00	-2,929.33
270	1	270	-31.18	43.00	0.00	0.00	0.00	1,134.03
		271	31.18	-43.00	0.00	0.00	0.00	-1,069.52
	2	270	25,136.68	-48.66	0.00	0.00	0.00	2,929.32
		271	-25,450.43	48.66	0.00	0.00	0.00	-3,008.95
271	1	271	-31.18	-59.24	0.00	0.00	0.00	1,069.53
		272	31.18	-59.24	0.00	0.00	0.00	-980.66
	2	271	25,450.41	23.07	0.00	0.00	0.00	3,008.95
		272	-25,764.15	-23.07	0.00	0.00	0.00	-2,979.92
272	1	272	-31.18	84.44	0.00	0.00	0.00	980.67
		273	31.18	-84.44	0.00	0.00	0.00	-854.00
	2	272	25,764.31	149.28	0.00	0.00	0.00	2,979.91
		273	-26,078.05	-149.28	0.00	0.00	0.00	-2,760.44
273	1	273	-31.18	95.87	0.00	0.00	0.00	854.00
		274	31.18	-95.87	0.00	0.00	0.00	-710.19
	2	273	26,077.87	223.14	0.00	0.00	0.00	2,760.45
		274	-26,391.62	-223.14	0.00	0.00	0.00	-2,429.12
274	1	274	-31.18	98.08	0.00	0.00	0.00	710.19
		275	31.18	-98.08	0.00	0.00	0.00	-563.07
	2	274	26,391.81	267.83	0.00	0.00	0.00	2,429.14
		275	-26,705.56	-267.83	0.00	0.00	0.00	-2,029.81
275	1	275	-31.18	92.03	0.00	0.00	0.00	563.07
		276	31.18	-92.03	0.00	0.00	0.00	-425.03
	2	275	26,705.26	276.32	0.00	0.00	0.00	2,029.82
		276	-27,019.01	-276.32	0.00	0.00	0.00	-1,616.95
276	1	276	-31.18	81.19	0.00	0.00	0.00	425.03
		277	31.18	-81.19	0.00	0.00	0.00	-303.25
	2	276	27,019.19	261.08	0.00	0.00	0.00	1,616.95
		277	-27,332.94	-261.08	0.00	0.00	0.00	-1,226.28
277	1	277	-31.18	68.18	0.00	0.00	0.00	303.25
		278	31.18	-68.18	0.00	0.00	0.00	-200.98
	2	277	27,332.85	232.07	0.00	0.00	0.00	1,226.27
		278	-27,646.60	-232.07	0.00	0.00	0.00	-878.61
278	1	278	-31.18	54.91	0.00	0.00	0.00	200.97
		279	31.18	-54.91	0.00	0.00	0.00	-118.60
	2	278	27,646.77	196.87	0.00	0.00	0.00	878.61
		279	-27,960.51	-196.87	0.00	0.00	0.00	-583.36
279	1	279	-31.18	42.62	0.00	0.00	0.00	118.60
		280	31.18	-42.62	0.00	0.00	0.00	-54.67
	2	279	27,960.32	160.94	0.00	0.00	0.00	583.36
		280	-28,274.07	-160.94	0.00	0.00	0.00	-341.76
280	1	280	-31.18	32.07	0.00	0.00	0.00	54.67
		281	31.18	-32.07	0.00	0.00	0.00	-6.57
	2	280	28,274.13	127.91	0.00	0.00	0.00	341.75
		281	-28,587.87	-127.91	0.00	0.00	0.00	-149.53
281	1	281	-31.18	23.59	0.00	0.00	0.00	6.57
		282	31.18	-23.59	0.00	0.00	0.00	28.82
	2	281	28,587.95	99.96	0.00	0.00	0.00	149.53
		282	-28,901.70	-99.96	0.00	0.00	0.00	0.84
282	1	282	-31.18	15.15	0.00	0.00	0.00	-28.82
		283	31.18	-15.15	0.00	0.00	0.00	51.54

THE STUDY ON THE CONSTRUCTION OF THE BRIDGE OVER THE RIVER RUPSA IN KHULNA, PHASE - 2

Job No. :	Designed by :	Checked by :	Date :	January 26, 2000				
	2	282	28,901.69	70.73	0.00	0.00	0.00	-0.84
		283	-29,215.44	-70.73	0.00	0.00	0.00	107.38
283	1	283	-31.18	9.33	0.00	0.00	0.00	-31.54
		284	31.18	-9.33	0.00	0.00	0.00	65.54
	2	283	29,215.35	49.59	0.00	0.00	0.00	-107.38
		284	-29,529.10	-49.59	0.00	0.00	0.00	182.16
284	1	284	-31.18	-1.38	0.00	0.00	0.00	-65.54
		285	31.18	1.38	0.00	0.00	0.00	63.47
	2	284	29,529.15	8.18	0.00	0.00	0.00	-182.16
		285	-29,842.90	-8.18	0.00	0.00	0.00	194.76
285	1	285	-31.18	-7.02	0.00	0.00	0.00	-63.47
		286	31.18	7.02	0.00	0.00	0.00	49.43
	2	285	29,842.89	-15.82	0.00	0.00	0.00	-194.76
		286	-30,261.22	15.82	0.00	0.00	0.00	163.42
286	1	286	-31.18	-8.21	0.00	0.00	0.00	-49.43
		287	31.18	8.21	0.00	0.00	0.00	33.01
	2	286	30,261.21	-23.75	0.00	0.00	0.00	-163.42
		287	-30,679.54	23.75	0.00	0.00	0.00	116.10
287	1	287	-31.18	-7.08	0.00	0.00	0.00	-33.01
		288	31.18	7.08	0.00	0.00	0.00	18.85
	2	287	30,679.59	-22.56	0.00	0.00	0.00	-116.10
		288	-31,097.93	22.56	0.00	0.00	0.00	71.06
288	1	288	-31.18	-5.09	0.00	0.00	0.00	-18.85
		289	31.18	5.09	0.00	0.00	0.00	8.67
	2	288	31,097.92	-17.31	0.00	0.00	0.00	-71.06
		289	-31,516.25	17.31	0.00	0.00	0.00	36.46
289	1	289	-31.18	-3.24	0.00	0.00	0.00	-8.67
		290	31.18	3.24	0.00	0.00	0.00	2.19
	2	289	31,516.32	-11.69	0.00	0.00	0.00	-36.46
		290	-31,934.65	11.69	0.00	0.00	0.00	13.06
290	1	290	-31.18	-1.74	0.00	0.00	0.00	-2.19
		291	31.18	1.74	0.00	0.00	0.00	-1.29
	2	290	31,934.65	-6.78	0.00	0.00	0.00	-13.06
		291	-32,352.99	6.78	0.00	0.00	0.00	-0.53
291	1	291	-31.18	-0.70	0.00	0.00	0.00	1.29
		292	31.18	0.70	0.00	0.00	0.00	-2.69
	2	291	32,352.85	-3.14	0.00	0.00	0.00	0.53
		292	-32,771.18	3.14	0.00	0.00	0.00	-6.84
292	1	292	-31.18	-0.07	0.00	0.00	0.00	2.69
		293	31.18	0.07	0.00	0.00	0.00	-2.83
	2	292	32,771.27	-0.82	0.00	0.00	0.00	6.84
		293	-33,189.60	0.82	0.00	0.00	0.00	-8.50
293	1	293	-31.18	0.24	0.00	0.00	0.00	2.83
		294	31.18	-0.24	0.00	0.00	0.00	-2.34
	2	293	33,189.58	0.44	0.00	0.00	0.00	8.50
		294	-33,607.91	-0.44	0.00	0.00	0.00	-7.64
294	1	294	-31.18	0.34	0.00	0.00	0.00	2.34
		295	31.18	-0.34	0.00	0.00	0.00	-1.66
	2	294	33,607.93	0.95	0.00	0.00	0.00	7.64
		295	-34,026.27	-0.95	0.00	0.00	0.00	-5.75
295	1	295	-31.18	-0.32	0.00	0.00	0.00	1.66
		296	31.18	-0.32	0.00	0.00	0.00	-1.02
	2	295	34,026.23	1.01	0.00	0.00	0.00	5.75
		296	-34,444.56	-1.01	0.00	0.00	0.00	-3.75
296	1	296	-31.18	0.25	0.00	0.00	0.00	1.02
		297	31.18	-0.25	0.00	0.00	0.00	-0.52
	2	296	34,444.59	0.84	0.00	0.00	0.00	3.75
		297	-34,862.92	-0.84	0.00	0.00	0.00	-2.08
297	1	297	-31.18	0.17	0.00	0.00	0.00	0.52
		298	31.18	-0.17	0.00	0.00	0.00	-0.18

THE STUDY ON THE CONSTRUCTION OF THE BRIDGE OVER THE RIVER RUPSA IN KHULNA, PHASE - 2

Job No. :	Designed by :	Checked by :	Date :	January 26, 2000				
	2	297	34,862.93	0.60	0.00	0.00	0.00	2.08
		298	-35,281.26	-0.60	0.00	0.00	0.00	-0.88
298	1	298	-31.18	0.10	0.00	0.00	0.00	0.18
		299	31.18	-0.10	0.00	0.00	0.00	0.01
	2	298	35,281.22	0.37	0.00	0.00	0.00	0.88
		299	-35,699.55	-0.37	0.00	0.00	0.00	-0.15
299	1	299	-31.18	0.04	0.00	0.00	0.00	-0.01
		300	31.18	-0.04	0.00	0.00	0.00	0.10
	2	299	35,699.54	0.19	0.00	0.00	0.00	0.13
		300	-36,117.87	-0.19	0.00	0.00	0.00	0.23
300	1	300	-31.18	0.01	0.00	0.00	0.00	-0.10
		301	31.18	-0.01	0.00	0.00	0.00	0.13
	2	300	36,117.55	0.07	0.00	0.00	0.00	-0.23
		301	-36,536.18	-0.07	0.00	0.00	0.00	0.36
301	1	301	-31.18	-0.01	0.00	0.00	0.00	-0.13
		302	31.18	0.01	0.00	0.00	0.00	0.11
	2	301	36,536.26	0.00	0.00	0.00	0.00	-0.36
		302	-36,954.59	0.00	0.00	0.00	0.00	0.36
302	1	302	-31.18	-0.01	0.00	0.00	0.00	-0.11
		303	31.18	0.01	0.00	0.00	0.00	0.07
	2	302	36,954.57	-0.04	0.00	0.00	0.00	-0.36
		303	-37,372.90	0.04	0.00	0.00	0.00	0.29
303	1	303	-31.18	-0.01	0.00	0.00	0.00	-0.09
		304	31.18	0.01	0.00	0.00	0.00	0.06
	2	303	37,372.88	-0.04	0.00	0.00	0.00	-0.29
		304	-37,791.21	0.04	0.00	0.00	0.00	0.20
304	1	304	-31.18	-0.01	0.00	0.00	0.00	-0.06
		305	31.18	0.01	0.00	0.00	0.00	0.03
	2	304	37,791.21	-0.04	0.00	0.00	0.00	-0.20
		305	-38,209.55	0.04	0.00	0.00	0.00	0.12
305	1	305	-31.18	-0.01	0.00	0.00	0.00	-0.03
		306	31.18	0.01	0.00	0.00	0.00	0.01
	2	305	38,209.57	-0.03	0.00	0.00	0.00	-0.12
		306	-38,627.90	0.03	0.00	0.00	0.00	0.05
306	1	306	-31.18	-0.01	0.00	0.00	0.00	-0.01
		307	31.18	0.01	0.00	0.00	0.00	0.00
	2	306	38,627.87	-0.03	0.00	0.00	0.00	-0.05
		307	-39,046.20	0.03	0.00	0.00	0.00	0.00
307	1	307	-31.18	-0.01	0.00	0.00	0.00	0.00
		308	31.18	0.01	0.00	0.00	0.00	-0.02
	2	307	39,046.21	-0.02	0.00	0.00	0.00	0.00
		308	-39,464.54	0.02	0.00	0.00	0.00	-0.05
308	1	308	-31.18	-0.01	0.00	0.00	0.00	0.02
		309	31.18	0.01	0.00	0.00	0.00	-0.03
	2	308	39,464.55	-0.02	0.00	0.00	0.00	0.05
		309	-39,778.29	0.02	0.00	0.00	0.00	-0.09
309	1	242	734.00	-97.69	0.00	0.00	0.00	-1,563.39
		310	-734.00	97.69	0.00	0.00	0.00	1,416.98
	2	242	20,744.00	645.40	0.00	0.00	0.00	15,164.17
		310	-21,057.75	-645.40	0.00	0.00	0.00	-14,222.79
310	1	310	734.00	-97.44	0.00	0.00	0.00	-1,417.06
		311	-734.00	97.44	0.00	0.00	0.00	539.56
	2	310	21,057.58	645.39	0.00	0.00	0.00	14,222.79
		311	-22,940.07	-645.39	0.00	0.00	0.00	-8,489.70
311	1	311	734.00	-97.43	0.00	0.00	0.00	-539.57
		312	-734.00	97.43	0.00	0.00	0.00	-923.23
	2	311	22,940.12	645.39	0.00	0.00	0.00	8,489.70
		312	-26,077.60	-645.39	0.00	0.00	0.00	-1,259.06
312	1	312	734.00	-70.39	0.00	0.00	0.00	923.22
		314	-734.00	70.39	0.00	0.00	0.00	-1,028.92

THE STUDY ON THE CONSTRUCTION OF THE BRIDGE OVER THE RIVER RUPSA IN KHULNA, PHASE - 2

Job No. :	Designed by :	Checked by :	Date :	January 16, 2000				
	2	312	26,077.43	537.39	0.00	0.00	0.00	-1,259.19
		314	-26,391.17	-537.39	0.00	0.00	0.00	2,076.57
313	1	314	734.00	-27.77	0.00	0.00	0.00	1,028.92
		315	-734.00	27.77	0.00	0.00	0.00	-1,070.68
	2	314	26,391.45	360.06	0.00	0.00	0.00	-2,076.82
		315	-26,705.19	-360.06	0.00	0.00	0.00	2,627.66
314	1	315	734.01	4.59	0.00	0.00	0.00	1,070.68
		316	-734.01	-4.59	0.00	0.00	0.00	-1,063.88
	2	315	26,705.19	218.92	0.00	0.00	0.00	-2,627.75
		316	-27,018.93	-218.92	0.00	0.00	0.00	2,965.84
315	1	316	734.00	38.25	0.00	0.00	0.00	1,063.85
		317	-734.00	-38.25	0.00	0.00	0.00	-1,021.54
	2	316	27,018.87	109.96	0.00	0.00	0.00	-2,965.86
		317	-27,332.62	-109.96	0.00	0.00	0.00	3,139.49
316	1	317	734.00	44.66	0.00	0.00	0.00	1,021.52
		318	-734.00	-44.66	0.00	0.00	0.00	-954.59
	2	317	27,332.58	29.46	0.00	0.00	0.00	-3,139.48
		318	-27,646.53	-29.46	0.00	0.00	0.00	3,191.11
317	1	318	734.00	58.20	0.00	0.00	0.00	954.59
		319	-734.00	-58.20	0.00	0.00	0.00	-867.33
	2	318	27,646.55	-43.29	0.00	0.00	0.00	-3,191.14
		319	-27,960.30	43.29	0.00	0.00	0.00	3,132.38
318	1	319	734.00	78.67	0.00	0.00	0.00	867.34
		320	-734.00	-78.67	0.00	0.00	0.00	-749.36
	2	319	27,960.03	-170.01	0.00	0.00	0.00	-3,132.41
		320	-28,273.78	170.01	0.00	0.00	0.00	2,882.52
319	1	320	734.00	87.35	0.00	0.00	0.00	749.36
		321	-734.00	-87.35	0.00	0.00	0.00	-618.35
	2	320	28,273.89	-242.95	0.00	0.00	0.00	-2,882.31
		321	-28,587.63	242.95	0.00	0.00	0.00	2,521.62
320	1	321	734.00	87.91	0.00	0.00	0.00	618.35
		322	-734.00	-87.91	0.00	0.00	0.00	-486.50
	2	321	28,587.72	-285.36	0.00	0.00	0.00	-2,521.61
		322	-28,901.46	285.36	0.00	0.00	0.00	2,096.22
321	1	322	734.00	81.56	0.00	0.00	0.00	486.50
		323	-734.00	-81.56	0.00	0.00	0.00	-364.16
	2	322	28,901.43	-291.05	0.00	0.00	0.00	-2,096.22
		323	-29,215.17	291.05	0.00	0.00	0.00	1,661.39
322	1	323	734.00	71.32	0.00	0.00	0.00	364.16
		324	-734.00	-71.32	0.00	0.00	0.00	-257.19
	2	323	29,215.14	-272.88	0.00	0.00	0.00	-1,661.39
		324	-29,528.89	272.88	0.00	0.00	0.00	1,233.08
323	1	324	734.00	59.43	0.00	0.00	0.00	237.19
		325	-734.00	-59.43	0.00	0.00	0.00	-168.05
	2	324	29,528.93	-241.09	0.00	0.00	0.00	-1,233.08
		325	-29,842.68	241.09	0.00	0.00	0.00	891.90
324	1	325	734.00	47.49	0.00	0.00	0.00	168.05
		326	-734.00	-47.49	0.00	0.00	0.00	-96.81
	2	325	29,842.77	-203.43	0.00	0.00	0.00	-891.89
		326	-30,156.51	203.43	0.00	0.00	0.00	586.78
325	1	326	734.00	36.57	0.00	0.00	0.00	96.81
		327	-734.00	-36.57	0.00	0.00	0.00	-41.96
	2	326	30,156.50	-165.46	0.00	0.00	0.00	-586.78
		327	-30,470.25	165.46	0.00	0.00	0.00	338.34
326	1	327	734.00	27.25	0.00	0.00	0.00	41.96
		328	-734.00	-27.25	0.00	0.00	0.00	-1.07
	2	327	30,470.03	-130.84	0.00	0.00	0.00	-338.34
		328	-30,783.78	130.84	0.00	0.00	0.00	141.66
327	1	328	734.00	19.84	0.00	0.00	0.00	1.07
		329	-734.00	-19.84	0.00	0.00	0.00	28.68

THE STUDY ON THE CONSTRUCTION OF THE BRIDGE OVER THE RIVER RUPSA IN KHULNA, PHASE - 2

Job No. :	Designed by :	Checked by :	Date :	January 26, 2000				
	2	328	30,783.60	-101.69	0.00	0.00	0.00	-141.67
		329	-31,097.33	101.69	0.00	0.00	0.00	-11.37
328	1	329	734.00	12.49	0.00	0.00	0.00	-28.68
		330	-734.00	-12.49	0.00	0.00	0.00	47.42
	2	329	31,097.68	-71.38	0.00	0.00	0.00	11.37
		330	-31,411.42	71.38	0.00	0.00	0.00	-118.93
329	1	330	734.00	7.47	0.00	0.00	0.00	-47.43
		331	-734.00	-7.47	0.00	0.00	0.00	58.64
	2	330	31,411.44	-49.56	0.00	0.00	0.00	118.93
		331	-31,725.19	49.56	0.00	0.00	0.00	-193.71
330	1	331	734.00	-1.68	0.00	0.00	0.00	-58.64
		313	-734.00	1.68	0.00	0.00	0.00	56.11
	2	331	31,725.10	-7.08	0.00	0.00	0.00	193.71
		313	-32,038.85	7.08	0.00	0.00	0.00	-204.69
331	1	313	734.00	-6.42	0.00	0.00	0.00	-56.11
		333	-734.00	6.42	0.00	0.00	0.00	43.28
	2	313	32,038.71	-17.34	0.00	0.00	0.00	204.69
		333	-32,437.10	17.34	0.00	0.00	0.00	-170.35
332	1	333	734.00	-7.32	0.00	0.00	0.00	-43.28
		334	-734.00	7.32	0.00	0.00	0.00	28.65
	2	333	32,437.24	-25.15	0.00	0.00	0.00	170.35
		334	-32,875.58	25.15	0.00	0.00	0.00	-120.25
333	1	334	734.00	-6.23	0.00	0.00	0.00	-28.65
		335	-734.00	6.23	0.00	0.00	0.00	16.18
	2	334	32,875.52	-23.62	0.00	0.00	0.00	120.25
		335	-33,293.85	23.62	0.00	0.00	0.00	-73.10
334	1	335	734.00	-4.44	0.00	0.00	0.00	-16.18
		336	-734.00	4.44	0.00	0.00	0.00	7.31
	2	335	33,293.80	-17.99	0.00	0.00	0.00	73.10
		336	-33,712.13	17.99	0.00	0.00	0.00	-37.13
335	1	336	734.00	-2.80	0.00	0.00	0.00	-7.31
		337	-734.00	2.80	0.00	0.00	0.00	1.70
	2	336	33,712.22	-12.08	0.00	0.00	0.00	37.13
		337	-34,130.55	12.08	0.00	0.00	0.00	-12.95
336	1	337	734.00	-1.49	0.00	0.00	0.00	-1.70
		338	-734.00	1.49	0.00	0.00	0.00	-1.27
	2	337	34,130.52	-6.95	0.00	0.00	0.00	12.95
		338	-34,548.85	6.95	0.00	0.00	0.00	0.98
337	1	338	734.00	-0.58	0.00	0.00	0.00	1.27
		339	-734.00	0.58	0.00	0.00	0.00	-2.43
	2	338	34,548.74	-3.18	0.00	0.00	0.00	-0.98
		339	-34,967.07	3.18	0.00	0.00	0.00	7.37
338	1	339	734.00	-0.04	0.00	0.00	0.00	2.43
		340	-734.00	0.04	0.00	0.00	0.00	-2.51
	2	339	34,967.11	-0.78	0.00	0.00	0.00	-7.37
		340	-35,385.44	0.78	0.00	0.00	0.00	8.96
339	1	340	734.00	0.22	0.00	0.00	0.00	2.51
		341	-734.00	-0.22	0.00	0.00	0.00	-2.06
	2	340	35,385.48	-0.50	0.00	0.00	0.00	-8.96
		341	-35,803.82	0.50	0.00	0.00	0.00	7.98
340	1	341	734.00	0.31	0.00	0.00	0.00	2.06
		342	-734.00	-0.31	0.00	0.00	0.00	-1.45
	2	341	35,803.85	-1.01	0.00	0.00	0.00	-7.98
		342	-36,222.16	1.01	0.00	0.00	0.00	5.97
341	1	342	734.00	0.28	0.00	0.00	0.00	1.45
		343	-734.00	-0.28	0.00	0.00	0.00	-0.88
	2	342	36,222.18	-1.06	0.00	0.00	0.00	-5.97
		343	-36,640.51	1.06	0.00	0.00	0.00	3.87
342	1	343	734.00	0.22	0.00	0.00	0.00	0.88
		344	-734.00	-0.22	0.00	0.00	0.00	-0.44

THE STUDY ON THE CONSTRUCTION OF THE BRIDGE OVER THE RIVER RUPSA IN KHULNA, PHASE - 2

Job No. :	Designed by :	Checked by :	Date :					
	2	343	36,640.50	-0.87	0.00	0.00	0.00	-3.87
		344	-37,058.83	0.87	0.00	0.00	0.00	2.12
343	1	344	734.00	0.15	0.00	0.00	0.00	0.34
		345	-734.00	-0.15	0.00	0.00	0.00	-0.15
	2	344	37,058.79	-0.62	0.00	0.00	0.00	-2.12
		345	-37,477.12	0.62	0.00	0.00	0.00	0.89
344	1	345	734.00	0.08	0.00	0.00	0.00	0.15
		346	-734.00	-0.08	0.00	0.00	0.00	0.02
	2	345	37,477.14	-0.38	0.00	0.00	0.00	-0.89
		346	-37,895.47	0.38	0.00	0.00	0.00	0.13
345	1	346	734.00	0.04	0.00	0.00	0.00	-0.02
		347	-734.00	-0.04	0.00	0.00	0.00	0.09
	2	346	37,895.49	-0.19	0.00	0.00	0.00	-0.13
		347	-38,313.82	0.19	0.00	0.00	0.00	-0.25
346	1	347	734.00	0.01	0.00	0.00	0.00	-0.09
		348	-734.00	-0.01	0.00	0.00	0.00	0.11
	2	347	38,313.79	-0.07	0.00	0.00	0.00	0.25
		348	-38,732.13	0.07	0.00	0.00	0.00	-0.39
347	1	348	734.00	-0.01	0.00	0.00	0.00	-0.11
		349	-734.00	0.01	0.00	0.00	0.00	0.10
	2	348	38,732.19	0.01	0.00	0.00	0.00	0.39
		349	-39,150.52	-0.01	0.00	0.00	0.00	-0.38
348	1	349	734.00	-0.01	0.00	0.00	0.00	-0.10
		350	-734.00	0.01	0.00	0.00	0.00	0.07
	2	349	39,150.49	0.04	0.00	0.00	0.00	0.38
		350	-39,568.82	-0.04	0.00	0.00	0.00	-0.30
349	1	350	734.00	-0.01	0.00	0.00	0.00	-0.07
		351	-734.00	0.01	0.00	0.00	0.00	0.05
	2	350	39,568.79	0.05	0.00	0.00	0.00	0.30
		351	-39,987.13	-0.05	0.00	0.00	0.00	-0.21
350	1	351	734.00	-0.01	0.00	0.00	0.00	-0.05
		352	-734.00	0.01	0.00	0.00	0.00	0.03
	2	351	39,987.15	0.04	0.00	0.00	0.00	0.21
		352	-40,405.48	-0.04	0.00	0.00	0.00	-0.12
351	1	352	734.00	-0.01	0.00	0.00	0.00	-0.03
		353	-734.00	0.01	0.00	0.00	0.00	0.01
	2	352	40,405.48	0.04	0.00	0.00	0.00	0.12
		353	-40,823.81	-0.04	0.00	0.00	0.00	-0.05
352	1	353	734.00	-0.01	0.00	0.00	0.00	-0.01
		354	-734.00	0.01	0.00	0.00	0.00	0.00
	2	353	40,823.80	0.03	0.00	0.00	0.00	0.05
		354	-41,242.14	-0.03	0.00	0.00	0.00	0.01
353	1	354	734.00	-0.01	0.00	0.00	0.00	0.00
		352	-734.00	0.01	0.00	0.00	0.00	-0.02
	2	354	41,242.13	0.02	0.00	0.00	0.00	-0.01
		352	-41,660.47	-0.02	0.00	0.00	0.00	0.05
354	1	352	734.00	-0.01	0.00	0.00	0.00	0.02
		355	-734.00	0.01	0.00	0.00	0.00	-0.02
	2	352	41,660.47	0.02	0.00	0.00	0.00	-0.05
		355	-41,974.21	-0.02	0.00	0.00	0.00	0.09
355	1	244	799.85	100.62	0.00	0.00	0.00	1,655.60
		356	-799.85	-100.62	0.00	0.00	0.00	-1,504.54
	2	244	18,746.11	-679.14	0.00	0.00	0.00	-16,318.12
		356	-19,059.86	679.14	0.00	0.00	0.00	15,327.28
356	1	356	799.87	100.50	0.00	0.00	0.00	1,504.70
		357	-799.87	-100.50	0.00	0.00	0.00	-599.58
	2	356	19,059.64	-679.16	0.00	0.00	0.00	-15,327.30
		357	-20,942.13	679.16	0.00	0.00	0.00	9,299.60
357	1	357	799.87	100.50	0.00	0.00	0.00	599.58
		358	-799.87	-100.50	0.00	0.00	0.00	909.36

THE STUDY ON THE CONSTRUCTION OF THE BRIDGE OVER THE RIVER RUPSA IN KHULNA, PHASE - 2

Job No. :	Designed by :	Checked by :	Date :	January 26, 2000				
	2	357	20,942.20	-679.16	0.00	0.00	0.00	-9,299.60
		358	-24,079.68	679.16	0.00	0.00	0.00	-939.37
358	1	358	799.87	73.24	0.00	0.00	0.00	-909.36
		360	-799.87	-73.24	0.00	0.00	0.00	1,019.33
	2	358	24,079.93	-571.39	0.00	0.00	0.00	939.33
		360	-24,393.67	571.39	0.00	0.00	0.00	-1,806.86
359	1	360	799.86	30.26	0.00	0.00	0.00	-1,019.32
		361	-799.86	-30.26	0.00	0.00	0.00	1,064.80
	2	360	24,393.08	-393.28	0.00	0.00	0.00	1,806.91
		361	-24,706.83	393.28	0.00	0.00	0.00	-2,406.63
360	1	361	799.87	-2.53	0.00	0.00	0.00	-1,064.79
		362	-799.87	2.53	0.00	0.00	0.00	1,061.10
	2	361	24,707.39	-250.69	0.00	0.00	0.00	2,406.72
		362	-25,021.13	250.69	0.00	0.00	0.00	-2,791.82
361	1	362	799.86	-26.49	0.00	0.00	0.00	-1,061.09
		363	-799.86	26.49	0.00	0.00	0.00	1,021.43
	2	362	25,020.96	-140.01	0.00	0.00	0.00	2,791.81
		363	-25,334.71	140.01	0.00	0.00	0.00	-3,009.90
362	1	363	799.86	-43.15	0.00	0.00	0.00	-1,021.41
		364	-799.86	43.15	0.00	0.00	0.00	956.74
	2	363	25,334.72	-57.58	0.00	0.00	0.00	3,009.97
		364	-25,648.47	57.58	0.00	0.00	0.00	-3,103.28
363	1	364	799.87	-56.97	0.00	0.00	0.00	-956.74
		365	-799.87	56.97	0.00	0.00	0.00	871.33
	2	364	25,648.50	-17.47	0.00	0.00	0.00	3,103.32
		365	-25,962.25	17.47	0.00	0.00	0.00	-3,082.95
364	1	365	799.87	-78.01	0.00	0.00	0.00	-871.33
		366	-799.87	78.01	0.00	0.00	0.00	754.35
	2	365	25,962.16	-150.04	0.00	0.00	0.00	3,082.94
		366	-26,275.90	150.04	0.00	0.00	0.00	-2,862.53
365	1	366	799.87	-87.10	0.00	0.00	0.00	-754.35
		367	-799.87	87.10	0.00	0.00	0.00	623.73
	2	366	26,275.91	-228.04	0.00	0.00	0.00	2,862.52
		367	-26,589.66	228.04	0.00	0.00	0.00	-2,524.01
366	1	367	799.86	-88.02	0.00	0.00	0.00	-623.73
		368	-799.86	88.02	0.00	0.00	0.00	491.72
	2	367	26,589.61	-275.83	0.00	0.00	0.00	2,524.01
		368	-26,903.35	275.83	0.00	0.00	0.00	-2,112.82
367	1	368	799.87	-81.90	0.00	0.00	0.00	-491.72
		369	-799.87	81.90	0.00	0.00	0.00	368.89
	2	368	26,903.48	-285.71	0.00	0.00	0.00	2,112.82
		369	-27,217.22	285.71	0.00	0.00	0.00	-1,685.95
368	1	369	799.86	-71.77	0.00	0.00	0.00	-368.89
		370	-799.86	71.77	0.00	0.00	0.00	261.23
	2	369	27,217.21	-270.67	0.00	0.00	0.00	1,685.95
		370	-27,530.95	270.67	0.00	0.00	0.00	-1,280.95
369	1	370	799.87	-59.93	0.00	0.00	0.00	-261.23
		371	-799.87	59.93	0.00	0.00	0.00	171.34
	2	370	27,530.92	-241.08	0.00	0.00	0.00	1,280.95
		371	-27,844.67	241.08	0.00	0.00	0.00	-919.79
370	1	371	799.87	-47.99	0.00	0.00	0.00	-171.33
		372	-799.87	47.99	0.00	0.00	0.00	99.35
	2	371	27,844.68	-204.88	0.00	0.00	0.00	919.79
		372	-28,158.43	204.88	0.00	0.00	0.00	-612.54
371	1	372	799.87	-37.03	0.00	0.00	0.00	-99.35
		373	-799.87	37.03	0.00	0.00	0.00	43.80
	2	372	28,158.38	-167.77	0.00	0.00	0.00	612.54
		373	-28,472.13	167.77	0.00	0.00	0.00	-360.68
372	1	373	799.86	-27.67	0.00	0.00	0.00	-43.80
		374	-799.86	27.67	0.00	0.00	0.00	2.30

THE STUDY ON THE CONSTRUCTION OF THE BRIDGE OVER THE RIVER RUPSA IN KHULNA, PHASE - 2

Job No. :	Designed by :	Checked by :	Date :	January 26, 2000				
	2	373	28,472.17	133.57	0.00	0.00	0.00	360.68
		374	-28,785.92	-133.57	0.00	0.00	0.00	-159.95
373	1	374	799.87	-20.19	0.00	0.00	0.00	-2.30
		375	-799.87	20.19	0.00	0.00	0.00	-27.99
	2	374	28,785.92	104.56	0.00	0.00	0.00	159.95
		375	-29,099.67	-104.56	0.00	0.00	0.00	-2.66
374	1	375	799.87	-12.78	0.00	0.00	0.00	27.99
		376	-799.87	12.78	0.00	0.00	0.00	-47.17
	2	375	29,099.90	74.18	0.00	0.00	0.00	2.67
		376	-29,413.65	-74.18	0.00	0.00	0.00	109.07
375	1	376	799.86	-7.71	0.00	0.00	0.00	47.17
		377	-799.86	7.71	0.00	0.00	0.00	-58.74
	2	376	29,413.43	52.17	0.00	0.00	0.00	-109.07
		377	-29,727.18	-52.17	0.00	0.00	0.00	187.73
376	1	377	799.86	1.57	0.00	0.00	0.00	58.74
		359	-799.86	-1.57	0.00	0.00	0.00	-56.38
	2	377	29,727.15	8.98	0.00	0.00	0.00	-187.73
		359	-30,040.90	-8.98	0.00	0.00	0.00	201.54
377	1	359	799.87	-6.40	0.00	0.00	0.00	56.38
		379	-799.87	-6.40	0.00	0.00	0.00	-43.59
	2	359	30,040.83	-16.14	0.00	0.00	0.00	-201.54
		379	-30,459.17	16.14	0.00	0.00	0.00	169.58
378	1	379	799.87	7.34	0.00	0.00	0.00	43.59
		380	-799.87	-7.34	0.00	0.00	0.00	-28.92
	2	379	30,459.26	-24.51	0.00	0.00	0.00	-169.58
		380	-30,877.59	24.51	0.00	0.00	0.00	120.74
379	1	380	799.87	6.27	0.00	0.00	0.00	28.92
		381	-799.87	-6.27	0.00	0.00	0.00	-16.38
	2	380	30,877.62	-23.38	0.00	0.00	0.00	-120.74
		381	-31,295.93	23.38	0.00	0.00	0.00	74.07
380	1	381	799.87	-4.47	0.00	0.00	0.00	16.38
		382	-799.87	-4.47	0.00	0.00	0.00	-7.43
	2	381	31,295.92	-17.98	0.00	0.00	0.00	-74.07
		382	-31,714.25	17.98	0.00	0.00	0.00	38.13
381	1	382	799.87	2.83	0.00	0.00	0.00	7.43
		383	-799.87	-2.83	0.00	0.00	0.00	-1.77
	2	382	31,714.29	-12.17	0.00	0.00	0.00	-38.13
		383	-32,132.62	12.17	0.00	0.00	0.00	13.77
382	1	383	799.86	1.51	0.00	0.00	0.00	1.77
		384	-799.86	-1.51	0.00	0.00	0.00	1.24
	2	383	32,132.53	-7.07	0.00	0.00	0.00	-13.77
		384	-32,510.86	7.07	0.00	0.00	0.00	-0.41
383	1	384	799.87	0.59	0.00	0.00	0.00	-1.24
		385	-799.87	-0.59	0.00	0.00	0.00	2.43
	2	384	32,510.91	-3.29	0.00	0.00	0.00	0.41
		385	-32,969.24	3.29	0.00	0.00	0.00	-7.02
384	1	385	799.86	0.04	0.00	0.00	0.00	-2.43
		386	-799.86	-0.04	0.00	0.00	0.00	2.52
	2	385	32,969.26	-0.87	0.00	0.00	0.00	7.02
		386	-33,387.59	0.87	0.00	0.00	0.00	-8.79
385	1	386	799.86	-0.22	0.00	0.00	0.00	-2.52
		387	-799.86	0.22	0.00	0.00	0.00	2.07
	2	386	33,387.55	0.44	0.00	0.00	0.00	8.79
		387	-33,805.88	-0.44	0.00	0.00	0.00	-7.92
386	1	387	799.87	-0.31	0.00	0.00	0.00	-2.07
		388	-799.87	0.31	0.00	0.00	0.00	1.46
	2	387	33,805.88	0.98	0.00	0.00	0.00	7.92
		388	-34,224.21	-0.98	0.00	0.00	0.00	-5.98
387	1	388	799.87	-0.29	0.00	0.00	0.00	-1.46
		389	-799.87	0.29	0.00	0.00	0.00	0.89

THE STUDY ON THE CONSTRUCTION OF THE BRIDGE OVER THE RIVER RUPSA IN KHULNA, PHASE - 2

Job No. :	Designed by :	Checked by :	Date :	January 26, 2000				
	2	388	34,224.21	1.04	0.00	0.00	0.00	5.98
		389	-34,642.54	-1.04	0.00	0.00	0.00	-3.90
388	1	389	799.86	-0.22	0.00	0.00	0.00	-0.89
		390	-799.86	0.22	0.00	0.00	0.00	0.45
	2	389	34,642.58	0.87	0.00	0.00	0.00	3.90
		390	-33,060.91	-0.87	0.00	0.00	0.00	-2.17
389	1	390	799.87	-0.15	0.00	0.00	0.00	-0.45
		391	-799.87	0.15	0.00	0.00	0.00	0.15
	2	390	35,060.89	0.62	0.00	0.00	0.00	2.17
		391	-35,479.22	-0.62	0.00	0.00	0.00	-0.93
390	1	391	799.87	-0.08	0.00	0.00	0.00	-0.15
		392	-799.87	0.08	0.00	0.00	0.00	-0.02
	2	391	35,479.27	0.38	0.00	0.00	0.00	0.93
		392	-35,897.60	-0.38	0.00	0.00	0.00	-0.16
391	1	392	799.87	-0.04	0.00	0.00	0.00	0.02
		393	-799.87	0.04	0.00	0.00	0.00	-0.09
	2	392	35,897.59	0.20	0.00	0.00	0.00	0.16
		393	-36,315.92	-0.20	0.00	0.00	0.00	0.23
392	1	393	799.87	-0.01	0.00	0.00	0.00	0.09
		394	-799.87	0.01	0.00	0.00	0.00	-0.11
	2	393	36,315.91	0.07	0.00	0.00	0.00	-0.23
		394	-36,734.24	-0.07	0.00	0.00	0.00	0.38
393	1	394	799.87	0.01	0.00	0.00	0.00	0.11
		395	-799.87	-0.01	0.00	0.00	0.00	-0.10
	2	394	36,734.23	0.00	0.00	0.00	0.00	-0.38
		395	-37,152.57	0.00	0.00	0.00	0.00	0.37
394	1	395	799.87	0.01	0.00	0.00	0.00	0.10
		396	-799.87	-0.01	0.00	0.00	0.00	-0.07
	2	395	37,152.55	-0.04	0.00	0.00	0.00	-0.37
		396	-37,570.88	0.04	0.00	0.00	0.00	0.30
395	1	396	799.87	0.01	0.00	0.00	0.00	0.07
		397	-799.87	-0.01	0.00	0.00	0.00	-0.05
	2	396	37,570.90	-0.05	0.00	0.00	0.00	-0.30
		397	-37,989.23	0.05	0.00	0.00	0.00	0.21
396	1	397	799.87	0.01	0.00	0.00	0.00	0.05
		398	-799.87	-0.01	0.00	0.00	0.00	-0.05
	2	397	37,989.21	-0.04	0.00	0.00	0.00	-0.21
		398	-38,407.54	0.04	0.00	0.00	0.00	0.12
397	1	398	799.87	0.01	0.00	0.00	0.00	0.03
		399	-799.87	-0.01	0.00	0.00	0.00	-0.01
	2	398	38,407.56	-0.04	0.00	0.00	0.00	-0.12
		399	-38,825.89	0.04	0.00	0.00	0.00	0.05
398	1	399	799.87	0.01	0.00	0.00	0.00	0.01
		400	-799.87	-0.01	0.00	0.00	0.00	0.00
	2	399	38,825.90	-0.03	0.00	0.00	0.00	-0.05
		400	-39,244.23	0.03	0.00	0.00	0.00	0.00
399	1	400	799.87	0.01	0.00	0.00	0.00	0.00
		378	-799.87	-0.01	0.00	0.00	0.00	0.02
	2	400	39,244.22	-0.02	0.00	0.00	0.00	0.00
		378	-39,662.55	0.02	0.00	0.00	0.00	-0.05
400	1	378	799.87	0.01	0.00	0.00	0.00	-0.02
		401	-799.87	-0.01	0.00	0.00	0.00	0.02
	2	378	39,662.55	-0.02	0.00	0.00	0.00	0.05
		401	-39,976.30	0.02	0.00	0.00	0.00	-0.09
402	1	402	-276.63	118.57	0.00	0.00	0.00	1,904.66
		403	276.63	-118.57	0.00	0.00	0.00	-837.66
	2	402	22,830.49	679.38	0.00	0.00	0.00	14,884.21
		403	-24,712.98	-679.38	0.00	0.00	0.00	-8,851.90
403	1	403	-276.63	118.57	0.00	0.00	0.00	837.66
		404	276.63	-118.57	0.00	0.00	0.00	940.47

THE STUDY ON THE CONSTRUCTION OF THE BRIDGE OVER THE RIVER RUPSA IN KHULNA, PHASE - 2

Job No. :	Designed by :	Checked by :	Date :	January 26, 2000				
	2	403	24,712.99	679.37	0.00	0.00	0.00	8,851.90
		404	-27,850.48	-679.37	0.00	0.00	0.00	1,420.29
404	1	404	-276.63	88.36	0.00	0.00	0.00	-940.47
		406	276.63	-88.36	0.00	0.00	0.00	1,073.00
	2	404	27,850.54	564.41	0.00	0.00	0.00	-1,420.25
		406	-28,164.29	-564.41	0.00	0.00	0.00	2,279.96
405	1	406	-276.63	40.52	0.00	0.00	0.00	-1,073.03
		407	276.63	-40.52	0.00	0.00	0.00	1,133.78
	2	406	28,164.15	375.27	0.00	0.00	0.00	-2,280.03
		407	-28,477.89	-375.27	0.00	0.00	0.00	2,855.31
406	1	407	-276.63	3.94	0.00	0.00	0.00	-1,133.80
		408	276.63	-3.94	0.00	0.00	0.00	1,139.69
	2	407	28,478.13	225.18	0.00	0.00	0.00	-2,855.51
		408	-28,791.88	-225.18	0.00	0.00	0.00	3,204.44
407	1	408	-276.63	-23.03	0.00	0.00	0.00	-1,139.70
		409	276.63	23.03	0.00	0.00	0.00	1,105.12
	2	408	28,791.54	109.53	0.00	0.00	0.00	-3,204.52
		409	-29,105.28	-109.53	0.00	0.00	0.00	3,378.65
408	1	409	-276.63	-41.89	0.00	0.00	0.00	-1,105.12
		410	276.63	41.89	0.00	0.00	0.00	1,042.27
	2	409	29,105.40	24.18	0.00	0.00	0.00	-3,378.70
		410	-29,419.14	-24.18	0.00	0.00	0.00	3,423.48
409	1	410	-276.63	-57.71	0.00	0.00	0.00	-1,042.26
		411	276.63	57.71	0.00	0.00	0.00	955.68
	2	410	29,419.16	-52.71	0.00	0.00	0.00	-3,423.48
		411	-29,732.91	52.71	0.00	0.00	0.00	3,351.48
410	1	411	-276.62	-82.27	0.00	0.00	0.00	-955.68
		412	276.62	82.27	0.00	0.00	0.00	832.26
	2	411	29,733.04	-186.34	0.00	0.00	0.00	-3,351.47
		412	-30,046.79	186.34	0.00	0.00	0.00	3,077.54
411	1	412	-276.63	-93.42	0.00	0.00	0.00	-832.26
		413	276.63	93.42	0.00	0.00	0.00	692.11
	2	412	30,046.75	-262.80	0.00	0.00	0.00	-3,077.54
		413	-30,360.49	262.80	0.00	0.00	0.00	2,687.53
412	1	413	-276.63	-95.58	0.00	0.00	0.00	-692.11
		414	276.63	95.58	0.00	0.00	0.00	548.75
	2	413	30,360.32	-306.67	0.00	0.00	0.00	-2,687.53
		414	-30,674.07	306.67	0.00	0.00	0.00	2,230.52
413	1	414	-276.63	-89.68	0.00	0.00	0.00	-548.74
		415	276.63	89.68	0.00	0.00	0.00	414.22
	2	414	30,674.30	-311.66	0.00	0.00	0.00	-2,230.51
		415	-30,988.05	311.66	0.00	0.00	0.00	1,764.98
414	1	415	-276.63	-79.12	0.00	0.00	0.00	-414.22
		416	276.63	79.12	0.00	0.00	0.00	295.55
	2	415	30,987.85	-291.49	0.00	0.00	0.00	-1,764.98
		416	-31,301.60	291.49	0.00	0.00	0.00	1,328.88
415	1	416	-276.63	-66.45	0.00	0.00	0.00	-295.55
		417	276.63	66.45	0.00	0.00	0.00	195.87
	2	416	31,301.60	-257.03	0.00	0.00	0.00	-1,328.88
		417	-31,615.34	257.03	0.00	0.00	0.00	943.83
416	1	417	-276.63	-53.52	0.00	0.00	0.00	-195.87
		418	276.63	53.52	0.00	0.00	0.00	115.60
	2	417	31,615.53	-216.52	0.00	0.00	0.00	-943.83
		418	-31,929.28	216.52	0.00	0.00	0.00	619.07
417	1	418	-276.62	-41.54	0.00	0.00	0.00	-115.60
		419	276.62	41.54	0.00	0.00	0.00	53.29
	2	418	31,929.23	-175.82	0.00	0.00	0.00	-619.08
		419	-32,242.98	175.82	0.00	0.00	0.00	355.06
418	1	419	-276.63	-31.25	0.00	0.00	0.00	-53.29
		420	276.63	31.25	0.00	0.00	0.00	6.41

THE STUDY ON THE CONSTRUCTION OF THE BRIDGE OVER THE RIVER RUPSA IN KHULNA, PHASE - 2

Job No. :	Designed by :	Checked by :	Date :	January 26, 2000				
	2	419	32,242.99	-138.79	0.00	0.00	0.00	-355.06
		420	-32,556.74	138.79	0.00	0.00	0.00	146.40
419	1	420	-276.63	-22.99	0.00	0.00	0.00	-6.41
		421	276.63	22.99	0.00	0.00	0.00	-28.08
	2	420	32,556.75	-107.68	0.00	0.00	0.00	-146.40
		421	-32,870.50	107.68	0.00	0.00	0.00	-15.68
420	1	421	-276.63	-14.76	0.00	0.00	0.00	28.08
		422	276.63	14.76	0.00	0.00	0.00	-50.22
	2	421	32,870.57	-75.38	0.00	0.00	0.00	15.68
		422	-33,184.32	75.38	0.00	0.00	0.00	-129.31
421	1	422	-276.63	-9.10	0.00	0.00	0.00	50.22
		423	276.63	9.10	0.00	0.00	0.00	-63.87
	2	422	33,184.24	-52.16	0.00	0.00	0.00	129.31
		423	-33,497.98	52.16	0.00	0.00	0.00	-208.06
422	1	423	-276.63	1.34	0.00	0.00	0.00	63.87
		405	276.63	-1.34	0.00	0.00	0.00	-61.83
	2	423	33,498.06	-7.05	0.00	0.00	0.00	208.06
		405	-33,811.81	7.05	0.00	0.00	0.00	-219.03
423	1	405	-276.63	6.84	0.00	0.00	0.00	61.83
		425	276.63	-6.84	0.00	0.00	0.00	-48.17
	2	405	33,811.69	-18.80	0.00	0.00	0.00	219.03
		425	-34,230.02	18.80	0.00	0.00	0.00	-181.83
424	1	425	-276.63	8.00	0.00	0.00	0.00	48.17
		426	276.63	-8.00	0.00	0.00	0.00	-32.17
	2	425	34,229.97	-26.98	0.00	0.00	0.00	181.83
		426	-34,648.30	26.98	0.00	0.00	0.00	-128.09
425	1	426	-276.63	6.90	0.00	0.00	0.00	32.17
		427	276.63	-6.90	0.00	0.00	0.00	-18.37
	2	426	34,648.39	-25.25	0.00	0.00	0.00	128.09
		427	-35,066.72	25.25	0.00	0.00	0.00	-77.69
426	1	427	-276.63	4.96	0.00	0.00	0.00	18.37
		428	276.63	-4.96	0.00	0.00	0.00	-8.45
	2	427	35,066.75	-19.19	0.00	0.00	0.00	77.69
		428	-35,485.08	19.19	0.00	0.00	0.00	-39.34
427	1	428	-276.63	3.16	0.00	0.00	0.00	8.45
		429	276.63	-3.16	0.00	0.00	0.00	-2.14
	2	428	35,485.04	-12.86	0.00	0.00	0.00	39.34
		429	-35,903.38	12.86	0.00	0.00	0.00	-13.60
428	1	429	-276.63	1.70	0.00	0.00	0.00	2.14
		430	276.63	-1.70	0.00	0.00	0.00	1.26
	2	429	35,903.41	-7.38	0.00	0.00	0.00	13.60
		430	-36,321.74	7.38	0.00	0.00	0.00	1.19
429	1	430	-276.63	0.68	0.00	0.00	0.00	-1.26
		431	276.63	-0.68	0.00	0.00	0.00	2.62
	2	430	36,321.71	-3.36	0.00	0.00	0.00	-1.19
		431	-36,740.04	3.36	0.00	0.00	0.00	7.95
430	1	431	-276.63	-0.07	0.00	0.00	0.00	-2.62
		432	276.63	0.07	0.00	0.00	0.00	2.75
	2	431	36,740.09	-0.81	0.00	0.00	0.00	-7.95
		432	-37,158.42	0.81	0.00	0.00	0.00	9.60
431	1	432	-276.63	-0.23	0.00	0.00	0.00	-2.75
		433	276.63	0.23	0.00	0.00	0.00	2.28
	2	432	37,158.33	-0.55	0.00	0.00	0.00	-9.60
		433	-37,576.67	0.55	0.00	0.00	0.00	8.52
432	1	433	-276.63	-0.33	0.00	0.00	0.00	-2.28
		434	276.63	0.33	0.00	0.00	0.00	1.62
	2	433	37,576.68	-1.09	0.00	0.00	0.00	-8.52
		434	-37,995.02	1.09	0.00	0.00	0.00	6.37
433	1	434	-276.63	-0.31	0.00	0.00	0.00	-1.62
		435	276.63	0.31	0.00	0.00	0.00	0.99

THE STUDY ON THE CONSTRUCTION OF THE BRIDGE OVER THE RIVER RUPSA IN KHULNA, PHASE - 2

Job No. :	Designed by :	Checked by :	Date :	January 26, 2000				
	2	434	37,995.04	-1.13	0.00	0.00	0.00	-6.37
		435	-38,413.38	1.13	0.00	0.00	0.00	-4.11
434	1	435	-276.63	-0.24	0.00	0.00	0.00	-0.99
		436	276.63	0.24	0.00	0.00	0.00	0.51
	2	435	38,413.41	-0.93	0.00	0.00	0.00	-4.11
		436	-38,831.74	0.93	0.00	0.00	0.00	2.25
435	1	436	-276.63	-0.16	0.00	0.00	0.00	-0.51
		437	276.63	0.16	0.00	0.00	0.00	0.18
	2	436	38,831.70	-0.66	0.00	0.00	0.00	-2.25
		437	-39,250.04	0.66	0.00	0.00	0.00	0.94
436	1	437	-276.63	-0.09	0.00	0.00	0.00	-0.18
		438	276.63	0.09	0.00	0.00	0.00	-0.01
	2	437	39,250.05	-0.40	0.00	0.00	0.00	-0.94
		438	-39,668.38	0.40	0.00	0.00	0.00	0.13
437	1	438	-276.63	-0.04	0.00	0.00	0.00	0.01
		439	276.63	0.04	0.00	0.00	0.00	-0.10
	2	438	39,668.38	-0.20	0.00	0.00	0.00	-0.13
		439	-40,086.71	0.20	0.00	0.00	0.00	-0.27
438	1	439	-276.63	-0.01	0.00	0.00	0.00	0.10
		440	276.63	0.01	0.00	0.00	0.00	-0.12
	2	439	40,086.70	-0.07	0.00	0.00	0.00	0.27
		440	-40,505.03	0.07	0.00	0.00	0.00	-0.41
439	1	440	-276.63	0.01	0.00	0.00	0.00	0.12
		441	276.63	-0.01	0.00	0.00	0.00	-0.11
	2	440	40,505.03	0.01	0.00	0.00	0.00	0.41
		441	-40,923.37	-0.01	0.00	0.00	0.00	-0.40
440	1	441	-276.63	0.01	0.00	0.00	0.00	0.11
		442	276.63	-0.01	0.00	0.00	0.00	-0.08
	2	441	40,923.37	0.04	0.00	0.00	0.00	0.40
		442	-41,341.70	-0.04	0.00	0.00	0.00	-0.32
441	1	442	-276.63	0.01	0.00	0.00	0.00	0.08
		443	276.63	-0.01	0.00	0.00	0.00	-0.05
	2	442	41,341.71	0.05	0.00	0.00	0.00	0.32
		443	-41,760.05	-0.05	0.00	0.00	0.00	-0.22
442	1	443	-276.63	0.01	0.00	0.00	0.00	0.05
		444	276.63	-0.01	0.00	0.00	0.00	-0.03
	2	443	41,760.05	0.05	0.00	0.00	0.00	0.22
		444	-42,178.38	-0.05	0.00	0.00	0.00	-0.13
443	1	444	-276.63	0.01	0.00	0.00	0.00	0.03
		445	276.63	-0.01	0.00	0.00	0.00	-0.01
	2	444	42,178.35	0.04	0.00	0.00	0.00	0.13
		445	-42,596.68	-0.04	0.00	0.00	0.00	-0.05
444	1	445	-276.63	0.01	0.00	0.00	0.00	0.01
		446	276.63	-0.01	0.00	0.00	0.00	0.00
	2	445	42,596.70	0.03	0.00	0.00	0.00	0.05
		446	-43,015.04	-0.03	0.00	0.00	0.00	0.01
445	1	446	-276.63	0.01	0.00	0.00	0.00	0.00
		424	276.63	-0.01	0.00	0.00	0.00	0.02
	2	446	43,015.03	0.03	0.00	0.00	0.00	-0.01
		424	-43,433.36	-0.03	0.00	0.00	0.00	0.06
446	1	424	-276.63	0.01	0.00	0.00	0.00	-0.02
		447	276.63	-0.01	0.00	0.00	0.00	0.03
	2	424	43,433.36	0.03	0.00	0.00	0.00	-0.06
		447	-43,747.11	-0.03	0.00	0.00	0.00	0.10

