

JAPAN INTERNATIONAL COOPERATION AGENCY (JICA)

MINISTRY OF COMMUNICATIONS  
THE GOVERNMENT OF THE PEOPLE'S REPUBLIC OF BANGLADESH

**THE STUDY  
ON  
CONSTRUCTION OF THE BRIDGE OVER THE RIVER RUPSA  
IN KHULNA  
(Phase 2)**

**TECHNICAL REPORT  
VOLUME 1 : BRIDGE**

JICA LIBRARY



J 1156856 (5)

MARCH 2000

**PACIFIC CONSULTANTS INTERNATIONAL  
JAPAN OVERSEAS CONSULTANTS**

S S F

CR 3

00-080(6/a)

**JAPAN INTERNATIONAL COOPERATION AGENCY (JICA)**

**MINISTRY OF COMMUNICATIONS  
THE GOVERNMENT OF THE PEOPLE'S REPUBLIC OF BANGLADESH**

**THE STUDY  
ON  
CONSTRUCTION OF THE BRIDGE OVER THE RIVER RUPSA  
IN KHULNA  
(Phase 2)**

**TECHNICAL REPORT  
VOLUME 1 : BRIDGE**

**MARCH 2000**

**PACIFIC CONSULTANTS INTERNATIONAL  
JAPAN OVERSEAS CONSULTANTS**



# **1-I MAIN BRIDGE**

## TABLE OF CONTENTS

	Page No.
<b>1. Frame 1 : Cantilever Construction</b>	
1.1. Geometric Input for STAAD Analysis	01 - 04
1.2. Dead Load Analysis	05 - 27
1.3. Construction Load Analysis	28 - 50
1.4. Prestress Loads	51 - 58
1.5. Longitudinal Wind Load Analysis	59 - 74
<b>2. Frame 2 : Cantilever Construction of Main Pier 2 + End Closure Span</b>	
2.1. Geometric Input fro STAAD Analysis	75 - 78
2.2. Dead Load Analysis	79 - 95
2.3. Prestress Load @ Closure Span Analysis	96 - 105
2.4. Prestress Load At Entire Frame Analysis	106 - 128
2.5. Shrinkage Load Analysis	129 - 135
2.6. Temperature Load Analysis	136 - 158
<b>3. Frame 3 : Frame 2 + Cantilever Construction of Main Pier 3 + Closure Segment</b>	
3.1 Geometric Input for STAAD Analysis	159 - 162
3.2 Dead Load Analysis	163 - 191
3.3. Prestress Load At Closure Analysis	192 - 208
3.4. Prestress Load Analysis At Entire Frame Analysis	209 - 240
3.5. Shrinkage Load Analysis	241 - 257
3.6. Temperature Load Analysis	258 - 297
<b>4. Frame 5 : Entire Constructed Bridge</b>	
4.1. Geometric Input for STAAD Analysis	298 - 307
4.2. Dead Load Analysis	308 - 384
4.3 Prestress Load At Closure Analysis	385 - 410
4.4 Prestress Load At Entire Frame Analysis	411 - 436
4.5. Shrinkage Load Analysis	437 - 462
4.6. Temperature Load Analysis	463 - 521

## **FRAME - 1 RESULT**

**GEOMETRIC INPUT**  
**OF FRAME 1 – CANTILEVER CONSTRUCTION**

MN/ELEM

2 8 9 10 11 12 13 14 15 16 17 18 19 20 21 22 23 24 25 26 27 28 29 30 31 32 33 34 35 36

STRUCTURE DATA

TYPE = SPACE  
 NJ = 133  
 NM = 132  
 NE = 0  
 NS = 0  
 NRJ = 08  
 NL = 3  
 XMAX = 96.0  
 YMAX = 121.3  
 ZMAX = .0

264	310
265	311
266	312
267	313
268	314
269	315
270	316
271	317
272	318
273	319
274	320
275	321
276	322
277	323
278	324
279	325
280	326
281	327
282	328
283	329
284	330
285	331
286	332
287	333
288	334
289	335
290	336
291	337
292	338
293	339
294	340
295	341
296	342
297	343
298	344
299	345
300	346
301	347
302	348
303	349
304	350
305	351
306	352
307	353
308	354

SHOWING MEMBERS

J=133, M=132

UNIT MET KNS

S T A A O P O S T - P L O T (REV: 22.3)

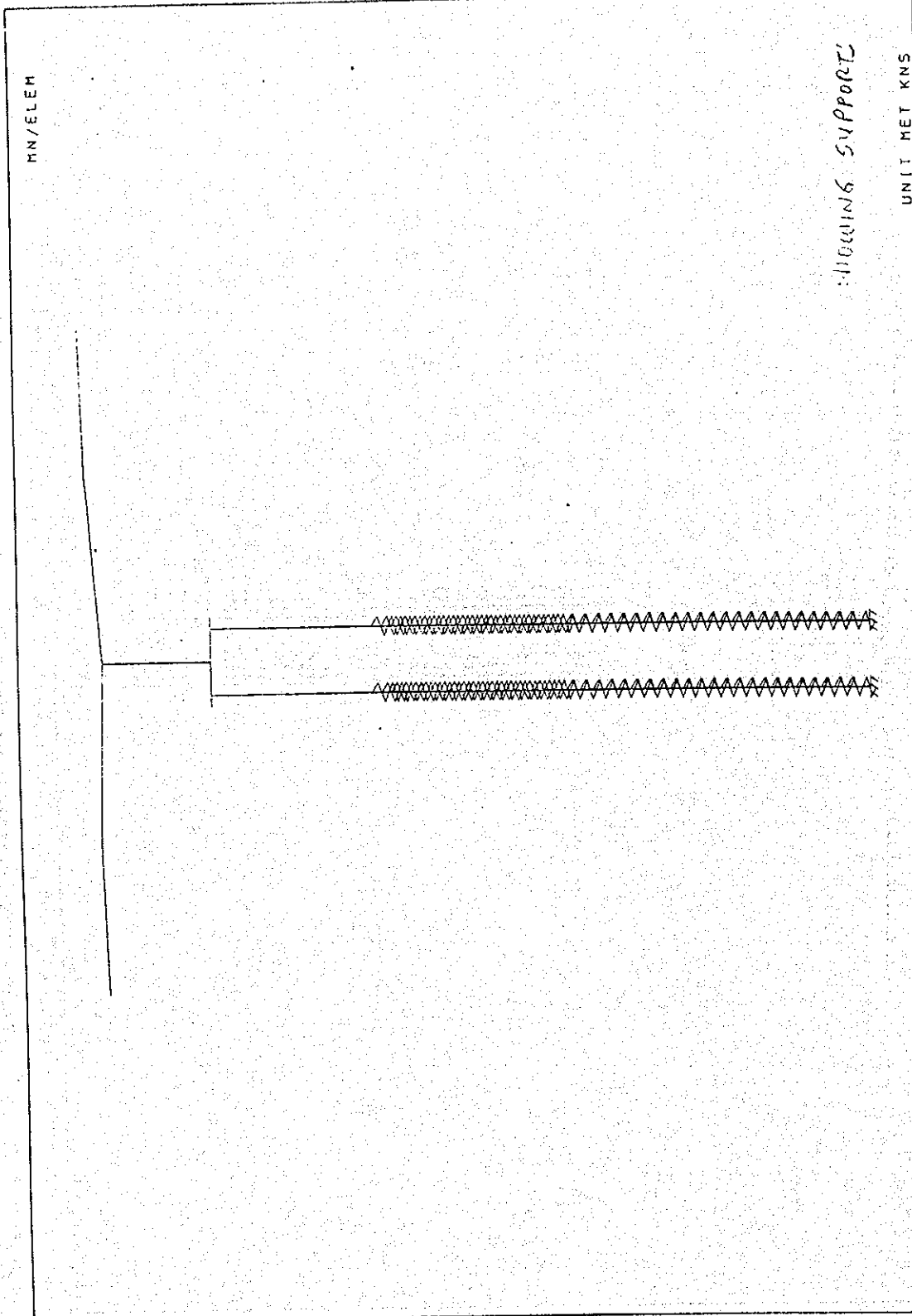
DATE: JAN 24, 2000

TITLE: RUPSA BRIDGE IN KHULNA



STRUCTURE DATA

TYPE = SPACE  
 NJ = 133  
 NH = 132  
 NE = 0  
 NS = 0  
 NRJ = 80  
 NL = 3  
 XMAX = 96.0  
 YMAX = 121.3  
 ZMAX = .0



UNIT MET KNS

J=133, M=132

DATE: JAN 24, 2000

S T A A D P O S T - P L O T (REV: 22.3)

TITLE: RUPSA BRIDGE IN KHULNA

# THE STUDY ON THE CONSTRUCTION OF THE BRIDGE OVER THE RIVER RUPSA IN KHULNA, PHASE - 2

Job No. : \_\_\_\_\_ Designed by : \_\_\_\_\_ Checked by : \_\_\_\_\_ Date : 1/24/00

## GEOMETRIC INPUT

<p>.....</p> <p>STAAD - III</p> <p>Revision 22.3</p> <p>Proprietary Program of</p> <p>Research Engineers, Inc.</p> <p>Date= JAN 23, 2000</p> <p>Time= 16:23:42</p> <p>.....</p> <p>USER ID: Pacific Consultants Internationa *</p> <p>.....</p> <p>1. STAAD SPACE RUPSA BRIDGE IN KHULNA</p> <p>2. INPUT WIDTH 72</p> <p>3. UNIT METER KNS</p> <p>4. JOINT COORDINATES</p> <table border="0" style="width: 100%;"> <tr><td>5. 7</td><td>22.000</td><td>17.447</td><td>.000</td></tr> <tr><td>6. 8</td><td>25.500</td><td>17.552</td><td>.000</td></tr> <tr><td>7. 9</td><td>29.000</td><td>17.657</td><td>.000</td></tr> <tr><td>8. 10</td><td>32.500</td><td>17.762</td><td>.000</td></tr> <tr><td>9. 11</td><td>36.000</td><td>17.867</td><td>.000</td></tr> <tr><td>10. 12</td><td>39.500</td><td>17.972</td><td>.000</td></tr> <tr><td>11. 13</td><td>43.000</td><td>18.077</td><td>.000</td></tr> <tr><td>12. 14</td><td>46.000</td><td>18.001</td><td>.000</td></tr> <tr><td>13. 15</td><td>49.000</td><td>17.923</td><td>.000</td></tr> <tr><td>14. 16</td><td>52.000</td><td>17.844</td><td>.000</td></tr> <tr><td>15. 17</td><td>55.000</td><td>17.764</td><td>.000</td></tr> <tr><td>16. 18</td><td>58.000</td><td>17.684</td><td>.000</td></tr> <tr><td>17. 19</td><td>61.000</td><td>17.604</td><td>.000</td></tr> <tr><td>18. 20</td><td>64.000</td><td>17.526</td><td>.000</td></tr> <tr><td>19. 21</td><td>68.000</td><td>17.425</td><td>.000</td></tr> <tr><td>20. 22</td><td>70.000</td><td>17.400</td><td>.000</td></tr> <tr><td>21. 23</td><td>72.000</td><td>17.545</td><td>.000</td></tr> <tr><td>22. 24</td><td>76.000</td><td>17.886</td><td>.000</td></tr> <tr><td>23. 25</td><td>79.000</td><td>18.144</td><td>.000</td></tr> <tr><td>24. 26</td><td>82.000</td><td>18.404</td><td>.000</td></tr> <tr><td>25. 27</td><td>85.000</td><td>18.664</td><td>.000</td></tr> <tr><td>26. 28</td><td>88.000</td><td>18.924</td><td>.000</td></tr> <tr><td>27. 29</td><td>91.000</td><td>19.183</td><td>.000</td></tr> <tr><td>28. 30</td><td>94.000</td><td>19.441</td><td>.000</td></tr> <tr><td>29. 31</td><td>97.000</td><td>19.697</td><td>.000</td></tr> <tr><td>30. 32</td><td>100.500</td><td>19.802</td><td>.000</td></tr> <tr><td>31. 33</td><td>104.000</td><td>19.907</td><td>.000</td></tr> <tr><td>32. 34</td><td>107.500</td><td>20.012</td><td>.000</td></tr> <tr><td>33. 35</td><td>111.000</td><td>20.117</td><td>.000</td></tr> <tr><td>34. 36</td><td>114.500</td><td>20.222</td><td>.000</td></tr> <tr><td>35. 37</td><td>118.000</td><td>20.327</td><td>.000</td></tr> <tr><td>36. 204</td><td>70.000</td><td>14.000</td><td>.000</td></tr> <tr><td>37. 205</td><td>70.000</td><td>12.500</td><td>.000</td></tr> <tr><td>38. 206</td><td>70.000</td><td>8.000</td><td>.000</td></tr> <tr><td>39. 207</td><td>70.000</td><td>3.500</td><td>.000</td></tr> <tr><td>40. 208</td><td>70.000</td><td>2.000</td><td>.000</td></tr> <tr><td>41. 209</td><td>70.000</td><td>.500</td><td>.000</td></tr> <tr><td>42. 240</td><td>65.250</td><td>.500</td><td>.000</td></tr> <tr><td>43. 241</td><td>63.500</td><td>.500</td><td>.000</td></tr> <tr><td>44. 242</td><td>74.750</td><td>.500</td><td>.000</td></tr> <tr><td>45. 243</td><td>76.500</td><td>.500</td><td>.000</td></tr> <tr><td>46. 264</td><td>65.250</td><td>-1.000</td><td>.000</td></tr> <tr><td>47. 265</td><td>65.250</td><td>-10.000</td><td>.000</td></tr> <tr><td>48. 266</td><td>65.250</td><td>-25.000</td><td>.000</td></tr> <tr><td>49. 267</td><td>65.250</td><td>-26.500</td><td>.000</td></tr> <tr><td>50. 268</td><td>65.250</td><td>-28.000</td><td>.000</td></tr> <tr><td>51. 269</td><td>65.250</td><td>-29.500</td><td>.000</td></tr> <tr><td>52. 270</td><td>65.250</td><td>-31.000</td><td>.000</td></tr> <tr><td>53. 271</td><td>65.250</td><td>-32.500</td><td>.000</td></tr> <tr><td>54. 272</td><td>65.250</td><td>-34.000</td><td>.000</td></tr> <tr><td>55. 273</td><td>65.250</td><td>-35.500</td><td>.000</td></tr> <tr><td>56. 274</td><td>65.250</td><td>-37.000</td><td>.000</td></tr> <tr><td>57. 275</td><td>65.250</td><td>-38.500</td><td>.000</td></tr> <tr><td>58. 276</td><td>65.250</td><td>-40.000</td><td>.000</td></tr> <tr><td>59. 277</td><td>65.250</td><td>-41.500</td><td>.000</td></tr> </table>	5. 7	22.000	17.447	.000	6. 8	25.500	17.552	.000	7. 9	29.000	17.657	.000	8. 10	32.500	17.762	.000	9. 11	36.000	17.867	.000	10. 12	39.500	17.972	.000	11. 13	43.000	18.077	.000	12. 14	46.000	18.001	.000	13. 15	49.000	17.923	.000	14. 16	52.000	17.844	.000	15. 17	55.000	17.764	.000	16. 18	58.000	17.684	.000	17. 19	61.000	17.604	.000	18. 20	64.000	17.526	.000	19. 21	68.000	17.425	.000	20. 22	70.000	17.400	.000	21. 23	72.000	17.545	.000	22. 24	76.000	17.886	.000	23. 25	79.000	18.144	.000	24. 26	82.000	18.404	.000	25. 27	85.000	18.664	.000	26. 28	88.000	18.924	.000	27. 29	91.000	19.183	.000	28. 30	94.000	19.441	.000	29. 31	97.000	19.697	.000	30. 32	100.500	19.802	.000	31. 33	104.000	19.907	.000	32. 34	107.500	20.012	.000	33. 35	111.000	20.117	.000	34. 36	114.500	20.222	.000	35. 37	118.000	20.327	.000	36. 204	70.000	14.000	.000	37. 205	70.000	12.500	.000	38. 206	70.000	8.000	.000	39. 207	70.000	3.500	.000	40. 208	70.000	2.000	.000	41. 209	70.000	.500	.000	42. 240	65.250	.500	.000	43. 241	63.500	.500	.000	44. 242	74.750	.500	.000	45. 243	76.500	.500	.000	46. 264	65.250	-1.000	.000	47. 265	65.250	-10.000	.000	48. 266	65.250	-25.000	.000	49. 267	65.250	-26.500	.000	50. 268	65.250	-28.000	.000	51. 269	65.250	-29.500	.000	52. 270	65.250	-31.000	.000	53. 271	65.250	-32.500	.000	54. 272	65.250	-34.000	.000	55. 273	65.250	-35.500	.000	56. 274	65.250	-37.000	.000	57. 275	65.250	-38.500	.000	58. 276	65.250	-40.000	.000	59. 277	65.250	-41.500	.000	<table border="0" style="width: 100%;"> <tr><td>60. 278</td><td>65.250</td><td>-43.000</td><td>.000</td></tr> <tr><td>61. 279</td><td>65.250</td><td>-44.500</td><td>.000</td></tr> <tr><td>62. 280</td><td>65.250</td><td>-46.000</td><td>.000</td></tr> <tr><td>63. 281</td><td>65.250</td><td>-47.500</td><td>.000</td></tr> <tr><td>64. 282</td><td>65.250</td><td>-49.000</td><td>.000</td></tr> <tr><td>65. 283</td><td>65.250</td><td>-50.500</td><td>.000</td></tr> <tr><td>66. 284</td><td>65.250</td><td>-52.000</td><td>.000</td></tr> <tr><td>67. 285</td><td>65.250</td><td>-53.500</td><td>.000</td></tr> <tr><td>68. 286</td><td>65.250</td><td>-55.000</td><td>.000</td></tr> <tr><td>69. 287</td><td>65.250</td><td>-57.500</td><td>.000</td></tr> <tr><td>70. 288</td><td>65.250</td><td>-59.500</td><td>.000</td></tr> <tr><td>71. 289</td><td>65.250</td><td>-61.500</td><td>.000</td></tr> <tr><td>72. 290</td><td>65.250</td><td>-63.500</td><td>.000</td></tr> <tr><td>73. 291</td><td>65.250</td><td>-65.500</td><td>.000</td></tr> <tr><td>74. 292</td><td>65.250</td><td>-67.500</td><td>.000</td></tr> <tr><td>75. 293</td><td>65.250</td><td>-69.500</td><td>.000</td></tr> <tr><td>76. 294</td><td>65.250</td><td>-71.500</td><td>.000</td></tr> <tr><td>77. 295</td><td>65.250</td><td>-73.500</td><td>.000</td></tr> <tr><td>78. 296</td><td>65.250</td><td>-75.500</td><td>.000</td></tr> <tr><td>79. 297</td><td>65.250</td><td>-77.500</td><td>.000</td></tr> <tr><td>80. 298</td><td>65.250</td><td>-79.500</td><td>.000</td></tr> <tr><td>81. 299</td><td>65.250</td><td>-81.500</td><td>.000</td></tr> <tr><td>82. 300</td><td>65.250</td><td>-83.500</td><td>.000</td></tr> <tr><td>83. 301</td><td>65.250</td><td>-85.500</td><td>.000</td></tr> <tr><td>84. 302</td><td>65.250</td><td>-87.500</td><td>.000</td></tr> <tr><td>85. 303</td><td>65.250</td><td>-89.500</td><td>.000</td></tr> <tr><td>86. 304</td><td>65.250</td><td>-91.500</td><td>.000</td></tr> <tr><td>87. 305</td><td>65.250</td><td>-93.500</td><td>.000</td></tr> <tr><td>88. 306</td><td>65.250</td><td>-95.500</td><td>.000</td></tr> <tr><td>89. 307</td><td>65.250</td><td>-97.500</td><td>.000</td></tr> <tr><td>90. 308</td><td>65.250</td><td>-99.500</td><td>.000</td></tr> <tr><td>91. 309</td><td>65.250</td><td>-101.000</td><td>.000</td></tr> <tr><td>92. 310</td><td>74.750</td><td>-1.000</td><td>.000</td></tr> <tr><td>93. 311</td><td>74.750</td><td>-10.000</td><td>.000</td></tr> <tr><td>94. 312</td><td>74.750</td><td>-25.000</td><td>.000</td></tr> <tr><td>95. 313</td><td>74.750</td><td>-53.500</td><td>.000</td></tr> <tr><td>96. 314</td><td>74.750</td><td>-26.500</td><td>.000</td></tr> <tr><td>97. 315</td><td>74.750</td><td>-28.000</td><td>.000</td></tr> <tr><td>98. 316</td><td>74.750</td><td>-29.500</td><td>.000</td></tr> <tr><td>99. 317</td><td>74.750</td><td>-31.000</td><td>.000</td></tr> <tr><td>100. 318</td><td>74.750</td><td>-32.500</td><td>.000</td></tr> <tr><td>101. 319</td><td>74.750</td><td>-34.000</td><td>.000</td></tr> <tr><td>102. 320</td><td>74.750</td><td>-35.500</td><td>.000</td></tr> <tr><td>103. 321</td><td>74.750</td><td>-37.000</td><td>.000</td></tr> <tr><td>104. 322</td><td>74.750</td><td>-38.500</td><td>.000</td></tr> <tr><td>105. 323</td><td>74.750</td><td>-40.000</td><td>.000</td></tr> <tr><td>106. 324</td><td>74.750</td><td>-41.500</td><td>.000</td></tr> <tr><td>107. 325</td><td>74.750</td><td>-43.000</td><td>.000</td></tr> <tr><td>108. 326</td><td>74.750</td><td>-44.500</td><td>.000</td></tr> <tr><td>109. 327</td><td>74.750</td><td>-46.000</td><td>.000</td></tr> <tr><td>110. 328</td><td>74.750</td><td>-47.500</td><td>.000</td></tr> <tr><td>111. 329</td><td>74.750</td><td>-49.000</td><td>.000</td></tr> <tr><td>112. 330</td><td>74.750</td><td>-50.500</td><td>.000</td></tr> <tr><td>113. 331</td><td>74.750</td><td>-52.000</td><td>.000</td></tr> <tr><td>114. 332</td><td>74.750</td><td>-53.500</td><td>.000</td></tr> <tr><td>115. 333</td><td>74.750</td><td>-55.000</td><td>.000</td></tr> <tr><td>116. 334</td><td>74.750</td><td>-57.500</td><td>.000</td></tr> <tr><td>117. 335</td><td>74.750</td><td>-59.500</td><td>.000</td></tr> <tr><td>118. 336</td><td>74.750</td><td>-61.500</td><td>.000</td></tr> <tr><td>119. 337</td><td>74.750</td><td>-63.500</td><td>.000</td></tr> <tr><td>120. 338</td><td>74.750</td><td>-65.500</td><td>.000</td></tr> <tr><td>121. 339</td><td>74.750</td><td>-67.500</td><td>.000</td></tr> <tr><td>122. 340</td><td>74.750</td><td>-69.500</td><td>.000</td></tr> <tr><td>123. 341</td><td>74.750</td><td>-71.500</td><td>.000</td></tr> <tr><td>124. 342</td><td>74.750</td><td>-73.500</td><td>.000</td></tr> <tr><td>125. 343</td><td>74.750</td><td>-75.500</td><td>.000</td></tr> <tr><td>126. 344</td><td>74.750</td><td>-77.500</td><td>.000</td></tr> <tr><td>127. 345</td><td>74.750</td><td>-79.500</td><td>.000</td></tr> <tr><td>128. 346</td><td>74.750</td><td>-81.500</td><td>.000</td></tr> <tr><td>129. 347</td><td>74.750</td><td>-83.500</td><td>.000</td></tr> <tr><td>130. 348</td><td>74.750</td><td>-85.500</td><td>.000</td></tr> </table>	60. 278	65.250	-43.000	.000	61. 279	65.250	-44.500	.000	62. 280	65.250	-46.000	.000	63. 281	65.250	-47.500	.000	64. 282	65.250	-49.000	.000	65. 283	65.250	-50.500	.000	66. 284	65.250	-52.000	.000	67. 285	65.250	-53.500	.000	68. 286	65.250	-55.000	.000	69. 287	65.250	-57.500	.000	70. 288	65.250	-59.500	.000	71. 289	65.250	-61.500	.000	72. 290	65.250	-63.500	.000	73. 291	65.250	-65.500	.000	74. 292	65.250	-67.500	.000	75. 293	65.250	-69.500	.000	76. 294	65.250	-71.500	.000	77. 295	65.250	-73.500	.000	78. 296	65.250	-75.500	.000	79. 297	65.250	-77.500	.000	80. 298	65.250	-79.500	.000	81. 299	65.250	-81.500	.000	82. 300	65.250	-83.500	.000	83. 301	65.250	-85.500	.000	84. 302	65.250	-87.500	.000	85. 303	65.250	-89.500	.000	86. 304	65.250	-91.500	.000	87. 305	65.250	-93.500	.000	88. 306	65.250	-95.500	.000	89. 307	65.250	-97.500	.000	90. 308	65.250	-99.500	.000	91. 309	65.250	-101.000	.000	92. 310	74.750	-1.000	.000	93. 311	74.750	-10.000	.000	94. 312	74.750	-25.000	.000	95. 313	74.750	-53.500	.000	96. 314	74.750	-26.500	.000	97. 315	74.750	-28.000	.000	98. 316	74.750	-29.500	.000	99. 317	74.750	-31.000	.000	100. 318	74.750	-32.500	.000	101. 319	74.750	-34.000	.000	102. 320	74.750	-35.500	.000	103. 321	74.750	-37.000	.000	104. 322	74.750	-38.500	.000	105. 323	74.750	-40.000	.000	106. 324	74.750	-41.500	.000	107. 325	74.750	-43.000	.000	108. 326	74.750	-44.500	.000	109. 327	74.750	-46.000	.000	110. 328	74.750	-47.500	.000	111. 329	74.750	-49.000	.000	112. 330	74.750	-50.500	.000	113. 331	74.750	-52.000	.000	114. 332	74.750	-53.500	.000	115. 333	74.750	-55.000	.000	116. 334	74.750	-57.500	.000	117. 335	74.750	-59.500	.000	118. 336	74.750	-61.500	.000	119. 337	74.750	-63.500	.000	120. 338	74.750	-65.500	.000	121. 339	74.750	-67.500	.000	122. 340	74.750	-69.500	.000	123. 341	74.750	-71.500	.000	124. 342	74.750	-73.500	.000	125. 343	74.750	-75.500	.000	126. 344	74.750	-77.500	.000	127. 345	74.750	-79.500	.000	128. 346	74.750	-81.500	.000	129. 347	74.750	-83.500	.000	130. 348	74.750	-85.500	.000	<table border="0" style="width: 100%;"> <tr><td>131. 349</td><td>74.750</td><td>-87.500</td><td>.000</td></tr> <tr><td>132. 350</td><td>74.750</td><td>-89.500</td><td>.000</td></tr> <tr><td>133. 351</td><td>74.750</td><td>-91.500</td><td>.000</td></tr> <tr><td>134. 352</td><td>74.750</td><td>-93.500</td><td>.000</td></tr> <tr><td>135. 353</td><td>74.750</td><td>-95.500</td><td>.000</td></tr> <tr><td>136. 354</td><td>74.750</td><td>-97.500</td><td>.000</td></tr> <tr><td>137. 355</td><td>74.750</td><td>-101.000</td><td>.000</td></tr> </table> <p>138. MEMBER INCIDENCES</p> <table border="0" style="width: 100%;"> <tr><td>139.</td><td>7</td><td>7</td><td>8</td></tr> <tr><td>140.</td><td>8</td><td>8</td><td>9</td></tr> <tr><td>141.</td><td>9</td><td>9</td><td>10</td></tr> <tr><td>142.</td><td>10</td><td>10</td><td>11</td></tr> <tr><td>143.</td><td>11</td><td>11</td><td>12</td></tr> <tr><td>144.</td><td>12</td><td>12</td><td>13</td></tr> <tr><td>145.</td><td>13</td><td>13</td><td>14</td></tr> <tr><td>146.</td><td>14</td><td>14</td><td>15</td></tr> <tr><td>147.</td><td>15</td><td>15</td><td>16</td></tr> <tr><td>148.</td><td>16</td><td>16</td><td>17</td></tr> <tr><td>149.</td><td>17</td><td>17</td><td>18</td></tr> <tr><td>150.</td><td>18</td><td>18</td><td>19</td></tr> <tr><td>151.</td><td>19</td><td>19</td><td>20</td></tr> <tr><td>152.</td><td>20</td><td>20</td><td>21</td></tr> <tr><td>153.</td><td>21</td><td>21</td><td>22</td></tr> <tr><td>154.</td><td>22</td><td>22</td><td>23</td></tr> <tr><td>155.</td><td>23</td><td>23</td><td>24</td></tr> <tr><td>156.</td><td>24</td><td>24</td><td>25</td></tr> <tr><td>157.</td><td>25</td><td>25</td><td>26</td></tr> <tr><td>158.</td><td>26</td><td>26</td><td>27</td></tr> <tr><td>159.</td><td>27</td><td>27</td><td>28</td></tr> <tr><td>160.</td><td>28</td><td>28</td><td>29</td></tr> <tr><td>161.</td><td>29</td><td>29</td><td>30</td></tr> <tr><td>162.</td><td>30</td><td>30</td><td>31</td></tr> <tr><td>163.</td><td>31</td><td>31</td><td>32</td></tr> <tr><td>164.</td><td>32</td><td>32</td><td>33</td></tr> <tr><td>165.</td><td>33</td><td>33</td><td>34</td></tr> <tr><td>166.</td><td>34</td><td>34</td><td>35</td></tr> <tr><td>167.</td><td>35</td><td>35</td><td>36</td></tr> <tr><td>168.</td><td>36</td><td>36</td><td>37</td></tr> <tr><td>169.</td><td>203</td><td>22</td><td>204</td></tr> <tr><td>170.</td><td>204</td><td>204</td><td>205</td></tr> <tr><td>171.</td><td>205</td><td>205</td><td>206</td></tr> <tr><td>172.</td><td>206</td><td>206</td><td>207</td></tr> <tr><td>173.</td><td>207</td><td>207</td><td>208</td></tr> <tr><td>174.</td><td>208</td><td>208</td><td>209</td></tr> <tr><td>175.</td><td>209</td><td>209</td><td>240</td></tr> <tr><td>176.</td><td>240</td><td>240</td><td>241</td></tr> <tr><td>177.</td><td>241</td><td>209</td><td>242</td></tr> <tr><td>178.</td><td>242</td><td>242</td><td>243</td></tr> <tr><td>179.</td><td>263</td><td>240</td><td>264</td></tr> <tr><td>180.</td><td>264</td><td>264</td><td>265</td></tr> <tr><td>181.</td><td>265</td><td>265</td><td>266</td></tr> <tr><td>182.</td><td>266</td><td>266</td><td>267</td></tr> <tr><td>183.</td><td>267</td><td>267</td><td>268</td></tr> <tr><td>184.</td><td>268</td><td>268</td><td>269</td></tr> <tr><td>185.</td><td>269</td><td>269</td><td>270</td></tr> <tr><td>186.</td><td>270</td><td>270</td><td>271</td></tr> <tr><td>187.</td><td>271</td><td>271</td><td>272</td></tr> <tr><td>188.</td><td>272</td><td>272</td><td>275</td></tr> <tr><td>189.</td><td>273</td><td>273</td><td>274</td></tr> <tr><td>190.</td><td>274</td><td>274</td><td>275</td></tr> <tr><td>191.</td><td>275</td><td>275</td><td>276</td></tr> <tr><td>192.</td><td>276</td><td>276</td><td>277</td></tr> <tr><td>193.</td><td>277</td><td>277</td><td>278</td></tr> <tr><td>194.</td><td>278</td><td>278</td><td>279</td></tr> <tr><td>195.</td><td>279</td><td>279</td><td>280</td></tr> <tr><td>196.</td><td>280</td><td>280</td><td>281</td></tr> <tr><td>197.</td><td>281</td><td>281</td><td>282</td></tr> <tr><td>198.</td><td>282</td><td>282</td><td>283</td></tr> <tr><td>199.</td><td>283</td><td>283</td><td>284</td></tr> <tr><td>200.</td><td>284</td><td>284</td><td>285</td></tr> <tr><td>201.</td><td>285</td><td>285</td><td>286</td></tr> </table>	131. 349	74.750	-87.500	.000	132. 350	74.750	-89.500	.000	133. 351	74.750	-91.500	.000	134. 352	74.750	-93.500	.000	135. 353	74.750	-95.500	.000	136. 354	74.750	-97.500	.000	137. 355	74.750	-101.000	.000	139.	7	7	8	140.	8	8	9	141.	9	9	10	142.	10	10	11	143.	11	11	12	144.	12	12	13	145.	13	13	14	146.	14	14	15	147.	15	15	16	148.	16	16	17	149.	17	17	18	150.	18	18	19	151.	19	19	20	152.	20	20	21	153.	21	21	22	154.	22	22	23	155.	23	23	24	156.	24	24	25	157.	25	25	26	158.	26	26	27	159.	27	27	28	160.	28	28	29	161.	29	29	30	162.	30	30	31	163.	31	31	32	164.	32	32	33	165.	33	33	34	166.	34	34	35	167.	35	35	36	168.	36	36	37	169.	203	22	204	170.	204	204	205	171.	205	205	206	172.	206	206	207	173.	207	207	208	174.	208	208	209	175.	209	209	240	176.	240	240	241	177.	241	209	242	178.	242	242	243	179.	263	240	264	180.	264	264	265	181.	265	265	266	182.	266	266	267	183.	267	267	268	184.	268	268	269	185.	269	269	270	186.	270	270	271	187.	271	271	272	188.	272	272	275	189.	273	273	274	190.	274	274	275	191.	275	275	276	192.	276	276	277	193.	277	277	278	194.	278	278	279	195.	279	279	280	196.	280	280	281	197.	281	281	282	198.	282	282	283	199.	283	283	284	200.	284	284	285	201.	285	285	286
5. 7	22.000	17.447	.000																																																																																																																																																																																																																																																																																																																																																																																																																																																																																																																																																																																																																																																																																																																																																																																																															
6. 8	25.500	17.552	.000																																																																																																																																																																																																																																																																																																																																																																																																																																																																																																																																																																																																																																																																																																																																																																																																															
7. 9	29.000	17.657	.000																																																																																																																																																																																																																																																																																																																																																																																																																																																																																																																																																																																																																																																																																																																																																																																																															
8. 10	32.500	17.762	.000																																																																																																																																																																																																																																																																																																																																																																																																																																																																																																																																																																																																																																																																																																																																																																																																															
9. 11	36.000	17.867	.000																																																																																																																																																																																																																																																																																																																																																																																																																																																																																																																																																																																																																																																																																																																																																																																																															
10. 12	39.500	17.972	.000																																																																																																																																																																																																																																																																																																																																																																																																																																																																																																																																																																																																																																																																																																																																																																																																															
11. 13	43.000	18.077	.000																																																																																																																																																																																																																																																																																																																																																																																																																																																																																																																																																																																																																																																																																																																																																																																																															
12. 14	46.000	18.001	.000																																																																																																																																																																																																																																																																																																																																																																																																																																																																																																																																																																																																																																																																																																																																																																																																															
13. 15	49.000	17.923	.000																																																																																																																																																																																																																																																																																																																																																																																																																																																																																																																																																																																																																																																																																																																																																																																																															
14. 16	52.000	17.844	.000																																																																																																																																																																																																																																																																																																																																																																																																																																																																																																																																																																																																																																																																																																																																																																																																															
15. 17	55.000	17.764	.000																																																																																																																																																																																																																																																																																																																																																																																																																																																																																																																																																																																																																																																																																																																																																																																																															
16. 18	58.000	17.684	.000																																																																																																																																																																																																																																																																																																																																																																																																																																																																																																																																																																																																																																																																																																																																																																																																															
17. 19	61.000	17.604	.000																																																																																																																																																																																																																																																																																																																																																																																																																																																																																																																																																																																																																																																																																																																																																																																																															
18. 20	64.000	17.526	.000																																																																																																																																																																																																																																																																																																																																																																																																																																																																																																																																																																																																																																																																																																																																																																																																															
19. 21	68.000	17.425	.000																																																																																																																																																																																																																																																																																																																																																																																																																																																																																																																																																																																																																																																																																																																																																																																																															
20. 22	70.000	17.400	.000																																																																																																																																																																																																																																																																																																																																																																																																																																																																																																																																																																																																																																																																																																																																																																																																															
21. 23	72.000	17.545	.000																																																																																																																																																																																																																																																																																																																																																																																																																																																																																																																																																																																																																																																																																																																																																																																																															
22. 24	76.000	17.886	.000																																																																																																																																																																																																																																																																																																																																																																																																																																																																																																																																																																																																																																																																																																																																																																																																															
23. 25	79.000	18.144	.000																																																																																																																																																																																																																																																																																																																																																																																																																																																																																																																																																																																																																																																																																																																																																																																																															
24. 26	82.000	18.404	.000																																																																																																																																																																																																																																																																																																																																																																																																																																																																																																																																																																																																																																																																																																																																																																																																															
25. 27	85.000	18.664	.000																																																																																																																																																																																																																																																																																																																																																																																																																																																																																																																																																																																																																																																																																																																																																																																																															
26. 28	88.000	18.924	.000																																																																																																																																																																																																																																																																																																																																																																																																																																																																																																																																																																																																																																																																																																																																																																																																															
27. 29	91.000	19.183	.000																																																																																																																																																																																																																																																																																																																																																																																																																																																																																																																																																																																																																																																																																																																																																																																																															
28. 30	94.000	19.441	.000																																																																																																																																																																																																																																																																																																																																																																																																																																																																																																																																																																																																																																																																																																																																																																																																															
29. 31	97.000	19.697	.000																																																																																																																																																																																																																																																																																																																																																																																																																																																																																																																																																																																																																																																																																																																																																																																																															
30. 32	100.500	19.802	.000																																																																																																																																																																																																																																																																																																																																																																																																																																																																																																																																																																																																																																																																																																																																																																																																															
31. 33	104.000	19.907	.000																																																																																																																																																																																																																																																																																																																																																																																																																																																																																																																																																																																																																																																																																																																																																																																																															
32. 34	107.500	20.012	.000																																																																																																																																																																																																																																																																																																																																																																																																																																																																																																																																																																																																																																																																																																																																																																																																															
33. 35	111.000	20.117	.000																																																																																																																																																																																																																																																																																																																																																																																																																																																																																																																																																																																																																																																																																																																																																																																																															
34. 36	114.500	20.222	.000																																																																																																																																																																																																																																																																																																																																																																																																																																																																																																																																																																																																																																																																																																																																																																																																															
35. 37	118.000	20.327	.000																																																																																																																																																																																																																																																																																																																																																																																																																																																																																																																																																																																																																																																																																																																																																																																																															
36. 204	70.000	14.000	.000																																																																																																																																																																																																																																																																																																																																																																																																																																																																																																																																																																																																																																																																																																																																																																																																															
37. 205	70.000	12.500	.000																																																																																																																																																																																																																																																																																																																																																																																																																																																																																																																																																																																																																																																																																																																																																																																																															
38. 206	70.000	8.000	.000																																																																																																																																																																																																																																																																																																																																																																																																																																																																																																																																																																																																																																																																																																																																																																																																															
39. 207	70.000	3.500	.000																																																																																																																																																																																																																																																																																																																																																																																																																																																																																																																																																																																																																																																																																																																																																																																																															
40. 208	70.000	2.000	.000																																																																																																																																																																																																																																																																																																																																																																																																																																																																																																																																																																																																																																																																																																																																																																																																															
41. 209	70.000	.500	.000																																																																																																																																																																																																																																																																																																																																																																																																																																																																																																																																																																																																																																																																																																																																																																																																															
42. 240	65.250	.500	.000																																																																																																																																																																																																																																																																																																																																																																																																																																																																																																																																																																																																																																																																																																																																																																																																															
43. 241	63.500	.500	.000																																																																																																																																																																																																																																																																																																																																																																																																																																																																																																																																																																																																																																																																																																																																																																																																															
44. 242	74.750	.500	.000																																																																																																																																																																																																																																																																																																																																																																																																																																																																																																																																																																																																																																																																																																																																																																																																															
45. 243	76.500	.500	.000																																																																																																																																																																																																																																																																																																																																																																																																																																																																																																																																																																																																																																																																																																																																																																																																															
46. 264	65.250	-1.000	.000																																																																																																																																																																																																																																																																																																																																																																																																																																																																																																																																																																																																																																																																																																																																																																																																															
47. 265	65.250	-10.000	.000																																																																																																																																																																																																																																																																																																																																																																																																																																																																																																																																																																																																																																																																																																																																																																																																															
48. 266	65.250	-25.000	.000																																																																																																																																																																																																																																																																																																																																																																																																																																																																																																																																																																																																																																																																																																																																																																																																															
49. 267	65.250	-26.500	.000																																																																																																																																																																																																																																																																																																																																																																																																																																																																																																																																																																																																																																																																																																																																																																																																															
50. 268	65.250	-28.000	.000																																																																																																																																																																																																																																																																																																																																																																																																																																																																																																																																																																																																																																																																																																																																																																																																															
51. 269	65.250	-29.500	.000																																																																																																																																																																																																																																																																																																																																																																																																																																																																																																																																																																																																																																																																																																																																																																																																															
52. 270	65.250	-31.000	.000																																																																																																																																																																																																																																																																																																																																																																																																																																																																																																																																																																																																																																																																																																																																																																																																															
53. 271	65.250	-32.500	.000																																																																																																																																																																																																																																																																																																																																																																																																																																																																																																																																																																																																																																																																																																																																																																																																															
54. 272	65.250	-34.000	.000																																																																																																																																																																																																																																																																																																																																																																																																																																																																																																																																																																																																																																																																																																																																																																																																															
55. 273	65.250	-35.500	.000																																																																																																																																																																																																																																																																																																																																																																																																																																																																																																																																																																																																																																																																																																																																																																																																															
56. 274	65.250	-37.000	.000																																																																																																																																																																																																																																																																																																																																																																																																																																																																																																																																																																																																																																																																																																																																																																																																															
57. 275	65.250	-38.500	.000																																																																																																																																																																																																																																																																																																																																																																																																																																																																																																																																																																																																																																																																																																																																																																																																															
58. 276	65.250	-40.000	.000																																																																																																																																																																																																																																																																																																																																																																																																																																																																																																																																																																																																																																																																																																																																																																																																															
59. 277	65.250	-41.500	.000																																																																																																																																																																																																																																																																																																																																																																																																																																																																																																																																																																																																																																																																																																																																																																																																															
60. 278	65.250	-43.000	.000																																																																																																																																																																																																																																																																																																																																																																																																																																																																																																																																																																																																																																																																																																																																																																																																															
61. 279	65.250	-44.500	.000																																																																																																																																																																																																																																																																																																																																																																																																																																																																																																																																																																																																																																																																																																																																																																																																															
62. 280	65.250	-46.000	.000																																																																																																																																																																																																																																																																																																																																																																																																																																																																																																																																																																																																																																																																																																																																																																																																															
63. 281	65.250	-47.500	.000																																																																																																																																																																																																																																																																																																																																																																																																																																																																																																																																																																																																																																																																																																																																																																																																															
64. 282	65.250	-49.000	.000																																																																																																																																																																																																																																																																																																																																																																																																																																																																																																																																																																																																																																																																																																																																																																																																															
65. 283	65.250	-50.500	.000																																																																																																																																																																																																																																																																																																																																																																																																																																																																																																																																																																																																																																																																																																																																																																																																															
66. 284	65.250	-52.000	.000																																																																																																																																																																																																																																																																																																																																																																																																																																																																																																																																																																																																																																																																																																																																																																																																															
67. 285	65.250	-53.500	.000																																																																																																																																																																																																																																																																																																																																																																																																																																																																																																																																																																																																																																																																																																																																																																																																															
68. 286	65.250	-55.000	.000																																																																																																																																																																																																																																																																																																																																																																																																																																																																																																																																																																																																																																																																																																																																																																																																															
69. 287	65.250	-57.500	.000																																																																																																																																																																																																																																																																																																																																																																																																																																																																																																																																																																																																																																																																																																																																																																																																															
70. 288	65.250	-59.500	.000																																																																																																																																																																																																																																																																																																																																																																																																																																																																																																																																																																																																																																																																																																																																																																																																															
71. 289	65.250	-61.500	.000																																																																																																																																																																																																																																																																																																																																																																																																																																																																																																																																																																																																																																																																																																																																																																																																															
72. 290	65.250	-63.500	.000																																																																																																																																																																																																																																																																																																																																																																																																																																																																																																																																																																																																																																																																																																																																																																																																															
73. 291	65.250	-65.500	.000																																																																																																																																																																																																																																																																																																																																																																																																																																																																																																																																																																																																																																																																																																																																																																																																															
74. 292	65.250	-67.500	.000																																																																																																																																																																																																																																																																																																																																																																																																																																																																																																																																																																																																																																																																																																																																																																																																															
75. 293	65.250	-69.500	.000																																																																																																																																																																																																																																																																																																																																																																																																																																																																																																																																																																																																																																																																																																																																																																																																															
76. 294	65.250	-71.500	.000																																																																																																																																																																																																																																																																																																																																																																																																																																																																																																																																																																																																																																																																																																																																																																																																															
77. 295	65.250	-73.500	.000																																																																																																																																																																																																																																																																																																																																																																																																																																																																																																																																																																																																																																																																																																																																																																																																															
78. 296	65.250	-75.500	.000																																																																																																																																																																																																																																																																																																																																																																																																																																																																																																																																																																																																																																																																																																																																																																																																															
79. 297	65.250	-77.500	.000																																																																																																																																																																																																																																																																																																																																																																																																																																																																																																																																																																																																																																																																																																																																																																																																															
80. 298	65.250	-79.500	.000																																																																																																																																																																																																																																																																																																																																																																																																																																																																																																																																																																																																																																																																																																																																																																																																															
81. 299	65.250	-81.500	.000																																																																																																																																																																																																																																																																																																																																																																																																																																																																																																																																																																																																																																																																																																																																																																																																															
82. 300	65.250	-83.500	.000																																																																																																																																																																																																																																																																																																																																																																																																																																																																																																																																																																																																																																																																																																																																																																																																															
83. 301	65.250	-85.500	.000																																																																																																																																																																																																																																																																																																																																																																																																																																																																																																																																																																																																																																																																																																																																																																																																															
84. 302	65.250	-87.500	.000																																																																																																																																																																																																																																																																																																																																																																																																																																																																																																																																																																																																																																																																																																																																																																																																															
85. 303	65.250	-89.500	.000																																																																																																																																																																																																																																																																																																																																																																																																																																																																																																																																																																																																																																																																																																																																																																																																															
86. 304	65.250	-91.500	.000																																																																																																																																																																																																																																																																																																																																																																																																																																																																																																																																																																																																																																																																																																																																																																																																															
87. 305	65.250	-93.500	.000																																																																																																																																																																																																																																																																																																																																																																																																																																																																																																																																																																																																																																																																																																																																																																																																															
88. 306	65.250	-95.500	.000																																																																																																																																																																																																																																																																																																																																																																																																																																																																																																																																																																																																																																																																																																																																																																																																															
89. 307	65.250	-97.500	.000																																																																																																																																																																																																																																																																																																																																																																																																																																																																																																																																																																																																																																																																																																																																																																																																															
90. 308	65.250	-99.500	.000																																																																																																																																																																																																																																																																																																																																																																																																																																																																																																																																																																																																																																																																																																																																																																																																															
91. 309	65.250	-101.000	.000																																																																																																																																																																																																																																																																																																																																																																																																																																																																																																																																																																																																																																																																																																																																																																																																															
92. 310	74.750	-1.000	.000																																																																																																																																																																																																																																																																																																																																																																																																																																																																																																																																																																																																																																																																																																																																																																																																															
93. 311	74.750	-10.000	.000																																																																																																																																																																																																																																																																																																																																																																																																																																																																																																																																																																																																																																																																																																																																																																																																															
94. 312	74.750	-25.000	.000																																																																																																																																																																																																																																																																																																																																																																																																																																																																																																																																																																																																																																																																																																																																																																																																															
95. 313	74.750	-53.500	.000																																																																																																																																																																																																																																																																																																																																																																																																																																																																																																																																																																																																																																																																																																																																																																																																															
96. 314	74.750	-26.500	.000																																																																																																																																																																																																																																																																																																																																																																																																																																																																																																																																																																																																																																																																																																																																																																																																															
97. 315	74.750	-28.000	.000																																																																																																																																																																																																																																																																																																																																																																																																																																																																																																																																																																																																																																																																																																																																																																																																															
98. 316	74.750	-29.500	.000																																																																																																																																																																																																																																																																																																																																																																																																																																																																																																																																																																																																																																																																																																																																																																																																															
99. 317	74.750	-31.000	.000																																																																																																																																																																																																																																																																																																																																																																																																																																																																																																																																																																																																																																																																																																																																																																																																															
100. 318	74.750	-32.500	.000																																																																																																																																																																																																																																																																																																																																																																																																																																																																																																																																																																																																																																																																																																																																																																																																															
101. 319	74.750	-34.000	.000																																																																																																																																																																																																																																																																																																																																																																																																																																																																																																																																																																																																																																																																																																																																																																																																															
102. 320	74.750	-35.500	.000																																																																																																																																																																																																																																																																																																																																																																																																																																																																																																																																																																																																																																																																																																																																																																																																															
103. 321	74.750	-37.000	.000																																																																																																																																																																																																																																																																																																																																																																																																																																																																																																																																																																																																																																																																																																																																																																																																															
104. 322	74.750	-38.500	.000																																																																																																																																																																																																																																																																																																																																																																																																																																																																																																																																																																																																																																																																																																																																																																																																															
105. 323	74.750	-40.000	.000																																																																																																																																																																																																																																																																																																																																																																																																																																																																																																																																																																																																																																																																																																																																																																																																															
106. 324	74.750	-41.500	.000																																																																																																																																																																																																																																																																																																																																																																																																																																																																																																																																																																																																																																																																																																																																																																																																															
107. 325	74.750	-43.000	.000																																																																																																																																																																																																																																																																																																																																																																																																																																																																																																																																																																																																																																																																																																																																																																																																															
108. 326	74.750	-44.500	.000																																																																																																																																																																																																																																																																																																																																																																																																																																																																																																																																																																																																																																																																																																																																																																																																															
109. 327	74.750	-46.000	.000																																																																																																																																																																																																																																																																																																																																																																																																																																																																																																																																																																																																																																																																																																																																																																																																															
110. 328	74.750	-47.500	.000																																																																																																																																																																																																																																																																																																																																																																																																																																																																																																																																																																																																																																																																																																																																																																																																															
111. 329	74.750	-49.000	.000																																																																																																																																																																																																																																																																																																																																																																																																																																																																																																																																																																																																																																																																																																																																																																																																															
112. 330	74.750	-50.500	.000																																																																																																																																																																																																																																																																																																																																																																																																																																																																																																																																																																																																																																																																																																																																																																																																															
113. 331	74.750	-52.000	.000																																																																																																																																																																																																																																																																																																																																																																																																																																																																																																																																																																																																																																																																																																																																																																																																															
114. 332	74.750	-53.500	.000																																																																																																																																																																																																																																																																																																																																																																																																																																																																																																																																																																																																																																																																																																																																																																																																															
115. 333	74.750	-55.000	.000																																																																																																																																																																																																																																																																																																																																																																																																																																																																																																																																																																																																																																																																																																																																																																																																															
116. 334	74.750	-57.500	.000																																																																																																																																																																																																																																																																																																																																																																																																																																																																																																																																																																																																																																																																																																																																																																																																															
117. 335	74.750	-59.500	.000																																																																																																																																																																																																																																																																																																																																																																																																																																																																																																																																																																																																																																																																																																																																																																																																															
118. 336	74.750	-61.500	.000																																																																																																																																																																																																																																																																																																																																																																																																																																																																																																																																																																																																																																																																																																																																																																																																															
119. 337	74.750	-63.500	.000																																																																																																																																																																																																																																																																																																																																																																																																																																																																																																																																																																																																																																																																																																																																																																																																															
120. 338	74.750	-65.500	.000																																																																																																																																																																																																																																																																																																																																																																																																																																																																																																																																																																																																																																																																																																																																																																																																															
121. 339	74.750	-67.500	.000																																																																																																																																																																																																																																																																																																																																																																																																																																																																																																																																																																																																																																																																																																																																																																																																															
122. 340	74.750	-69.500	.000																																																																																																																																																																																																																																																																																																																																																																																																																																																																																																																																																																																																																																																																																																																																																																																																															
123. 341	74.750	-71.500	.000																																																																																																																																																																																																																																																																																																																																																																																																																																																																																																																																																																																																																																																																																																																																																																																																															
124. 342	74.750	-73.500	.000																																																																																																																																																																																																																																																																																																																																																																																																																																																																																																																																																																																																																																																																																																																																																																																																															
125. 343	74.750	-75.500	.000																																																																																																																																																																																																																																																																																																																																																																																																																																																																																																																																																																																																																																																																																																																																																																																																															
126. 344	74.750	-77.500	.000																																																																																																																																																																																																																																																																																																																																																																																																																																																																																																																																																																																																																																																																																																																																																																																																															
127. 345	74.750	-79.500	.000																																																																																																																																																																																																																																																																																																																																																																																																																																																																																																																																																																																																																																																																																																																																																																																																															
128. 346	74.750	-81.500	.000																																																																																																																																																																																																																																																																																																																																																																																																																																																																																																																																																																																																																																																																																																																																																																																																															
129. 347	74.750	-83.500	.000																																																																																																																																																																																																																																																																																																																																																																																																																																																																																																																																																																																																																																																																																																																																																																																																															
130. 348	74.750	-85.500	.000																																																																																																																																																																																																																																																																																																																																																																																																																																																																																																																																																																																																																																																																																																																																																																																																															
131. 349	74.750	-87.500	.000																																																																																																																																																																																																																																																																																																																																																																																																																																																																																																																																																																																																																																																																																																																																																																																																															
132. 350	74.750	-89.500	.000																																																																																																																																																																																																																																																																																																																																																																																																																																																																																																																																																																																																																																																																																																																																																																																																															
133. 351	74.750	-91.500	.000																																																																																																																																																																																																																																																																																																																																																																																																																																																																																																																																																																																																																																																																																																																																																																																																															
134. 352	74.750	-93.500	.000																																																																																																																																																																																																																																																																																																																																																																																																																																																																																																																																																																																																																																																																																																																																																																																																															
135. 353	74.750	-95.500	.000																																																																																																																																																																																																																																																																																																																																																																																																																																																																																																																																																																																																																																																																																																																																																																																																															
136. 354	74.750	-97.500	.000																																																																																																																																																																																																																																																																																																																																																																																																																																																																																																																																																																																																																																																																																																																																																																																																															
137. 355	74.750	-101.000	.000																																																																																																																																																																																																																																																																																																																																																																																																																																																																																																																																																																																																																																																																																																																																																																																																															
139.	7	7	8																																																																																																																																																																																																																																																																																																																																																																																																																																																																																																																																																																																																																																																																																																																																																																																																															
140.	8	8	9																																																																																																																																																																																																																																																																																																																																																																																																																																																																																																																																																																																																																																																																																																																																																																																																															
141.	9	9	10																																																																																																																																																																																																																																																																																																																																																																																																																																																																																																																																																																																																																																																																																																																																																																																																															
142.	10	10	11																																																																																																																																																																																																																																																																																																																																																																																																																																																																																																																																																																																																																																																																																																																																																																																																															
143.	11	11	12																																																																																																																																																																																																																																																																																																																																																																																																																																																																																																																																																																																																																																																																																																																																																																																																															
144.	12	12	13																																																																																																																																																																																																																																																																																																																																																																																																																																																																																																																																																																																																																																																																																																																																																																																																															
145.	13	13	14																																																																																																																																																																																																																																																																																																																																																																																																																																																																																																																																																																																																																																																																																																																																																																																																															
146.	14	14	15																																																																																																																																																																																																																																																																																																																																																																																																																																																																																																																																																																																																																																																																																																																																																																																																															
147.	15	15	16																																																																																																																																																																																																																																																																																																																																																																																																																																																																																																																																																																																																																																																																																																																																																																																																															
148.	16	16	17																																																																																																																																																																																																																																																																																																																																																																																																																																																																																																																																																																																																																																																																																																																																																																																																															
149.	17	17	18																																																																																																																																																																																																																																																																																																																																																																																																																																																																																																																																																																																																																																																																																																																																																																																																															
150.	18	18	19																																																																																																																																																																																																																																																																																																																																																																																																																																																																																																																																																																																																																																																																																																																																																																																																															
151.	19	19	20																																																																																																																																																																																																																																																																																																																																																																																																																																																																																																																																																																																																																																																																																																																																																																																																															
152.	20	20	21																																																																																																																																																																																																																																																																																																																																																																																																																																																																																																																																																																																																																																																																																																																																																																																																															
153.	21	21	22																																																																																																																																																																																																																																																																																																																																																																																																																																																																																																																																																																																																																																																																																																																																																																																																															
154.	22	22	23																																																																																																																																																																																																																																																																																																																																																																																																																																																																																																																																																																																																																																																																																																																																																																																																															
155.	23	23	24																																																																																																																																																																																																																																																																																																																																																																																																																																																																																																																																																																																																																																																																																																																																																																																																															
156.	24	24	25																																																																																																																																																																																																																																																																																																																																																																																																																																																																																																																																																																																																																																																																																																																																																																																																															
157.	25	25	26																																																																																																																																																																																																																																																																																																																																																																																																																																																																																																																																																																																																																																																																																																																																																																																																															
158.	26	26	27																																																																																																																																																																																																																																																																																																																																																																																																																																																																																																																																																																																																																																																																																																																																																																																																															
159.	27	27	28																																																																																																																																																																																																																																																																																																																																																																																																																																																																																																																																																																																																																																																																																																																																																																																																															
160.	28	28	29																																																																																																																																																																																																																																																																																																																																																																																																																																																																																																																																																																																																																																																																																																																																																																																																															
161.	29	29	30																																																																																																																																																																																																																																																																																																																																																																																																																																																																																																																																																																																																																																																																																																																																																																																																															
162.	30	30	31																																																																																																																																																																																																																																																																																																																																																																																																																																																																																																																																																																																																																																																																																																																																																																																																															
163.	31	31	32																																																																																																																																																																																																																																																																																																																																																																																																																																																																																																																																																																																																																																																																																																																																																																																																															
164.	32	32	33																																																																																																																																																																																																																																																																																																																																																																																																																																																																																																																																																																																																																																																																																																																																																																																																															
165.	33	33	34																																																																																																																																																																																																																																																																																																																																																																																																																																																																																																																																																																																																																																																																																																																																																																																																															
166.	34	34	35																																																																																																																																																																																																																																																																																																																																																																																																																																																																																																																																																																																																																																																																																																																																																																																																															
167.	35	35	36																																																																																																																																																																																																																																																																																																																																																																																																																																																																																																																																																																																																																																																																																																																																																																																																															
168.	36	36	37																																																																																																																																																																																																																																																																																																																																																																																																																																																																																																																																																																																																																																																																																																																																																																																																															
169.	203	22	204																																																																																																																																																																																																																																																																																																																																																																																																																																																																																																																																																																																																																																																																																																																																																																																																															
170.	204	204	205																																																																																																																																																																																																																																																																																																																																																																																																																																																																																																																																																																																																																																																																																																																																																																																																															
171.	205	205	206																																																																																																																																																																																																																																																																																																																																																																																																																																																																																																																																																																																																																																																																																																																																																																																																															
172.	206	206	207																																																																																																																																																																																																																																																																																																																																																																																																																																																																																																																																																																																																																																																																																																																																																																																																															
173.	207	207	208																																																																																																																																																																																																																																																																																																																																																																																																																																																																																																																																																																																																																																																																																																																																																																																																															
174.	208	208	209																																																																																																																																																																																																																																																																																																																																																																																																																																																																																																																																																																																																																																																																																																																																																																																																															
175.	209	209	240																																																																																																																																																																																																																																																																																																																																																																																																																																																																																																																																																																																																																																																																																																																																																																																																															
176.	240	240	241																																																																																																																																																																																																																																																																																																																																																																																																																																																																																																																																																																																																																																																																																																																																																																																																															
177.	241	209	242																																																																																																																																																																																																																																																																																																																																																																																																																																																																																																																																																																																																																																																																																																																																																																																																															
178.	242	242	243																																																																																																																																																																																																																																																																																																																																																																																																																																																																																																																																																																																																																																																																																																																																																																																																															
179.	263	240	264																																																																																																																																																																																																																																																																																																																																																																																																																																																																																																																																																																																																																																																																																																																																																																																																															
180.	264	264	265																																																																																																																																																																																																																																																																																																																																																																																																																																																																																																																																																																																																																																																																																																																																																																																																															
181.	265	265	266																																																																																																																																																																																																																																																																																																																																																																																																																																																																																																																																																																																																																																																																																																																																																																																																															
182.	266	266	267																																																																																																																																																																																																																																																																																																																																																																																																																																																																																																																																																																																																																																																																																																																																																																																																															
183.	267	267	268																																																																																																																																																																																																																																																																																																																																																																																																																																																																																																																																																																																																																																																																																																																																																																																																															
184.	268	268	269																																																																																																																																																																																																																																																																																																																																																																																																																																																																																																																																																																																																																																																																																																																																																																																																															
185.	269	269	270																																																																																																																																																																																																																																																																																																																																																																																																																																																																																																																																																																																																																																																																																																																																																																																																															
186.	270	270	271																																																																																																																																																																																																																																																																																																																																																																																																																																																																																																																																																																																																																																																																																																																																																																																																															
187.	271	271	272																																																																																																																																																																																																																																																																																																																																																																																																																																																																																																																																																																																																																																																																																																																																																																																																															
188.	272	272	275																																																																																																																																																																																																																																																																																																																																																																																																																																																																																																																																																																																																																																																																																																																																																																																																															
189.	273	273	274																																																																																																																																																																																																																																																																																																																																																																																																																																																																																																																																																																																																																																																																																																																																																																																																															
190.	274	274	275																																																																																																																																																																																																																																																																																																																																																																																																																																																																																																																																																																																																																																																																																																																																																																																																															
191.	275	275	276																																																																																																																																																																																																																																																																																																																																																																																																																																																																																																																																																																																																																																																																																																																																																																																																															
192.	276	276	277																																																																																																																																																																																																																																																																																																																																																																																																																																																																																																																																																																																																																																																																																																																																																																																																															
193.	277	277	278																																																																																																																																																																																																																																																																																																																																																																																																																																																																																																																																																																																																																																																																																																																																																																																																															
194.	278	278	279																																																																																																																																																																																																																																																																																																																																																																																																																																																																																																																																																																																																																																																																																																																																																																																																															
195.	279	279	280																																																																																																																																																																																																																																																																																																																																																																																																																																																																																																																																																																																																																																																																																																																																																																																																															
196.	280	280	281																																																																																																																																																																																																																																																																																																																																																																																																																																																																																																																																																																																																																																																																																																																																																																																																															
197.	281	281	282																																																																																																																																																																																																																																																																																																																																																																																																																																																																																																																																																																																																																																																																																																																																																																																																															
198.	282	282	283																																																																																																																																																																																																																																																																																																																																																																																																																																																																																																																																																																																																																																																																																																																																																																																																															
199.	283	283	284																																																																																																																																																																																																																																																																																																																																																																																																																																																																																																																																																																																																																																																																																																																																																																																																															
200.	284	284	285																																																																																																																																																																																																																																																																																																																																																																																																																																																																																																																																																																																																																																																																																																																																																																																																															
201.	285	285	286																																																																																																																																																																																																																																																																																																																																																																																																																																																																																																																																																																																																																																																																																																																																																																																																															

# THE STUDY ON THE CONSTRUCTION OF THE BRIDGE OVER THE RIVER RUPSA IN KHULNA, PHASE - 2

Job No. :	Designed by :	Checked by :	Date : 1/24/00
-----------	---------------	--------------	----------------

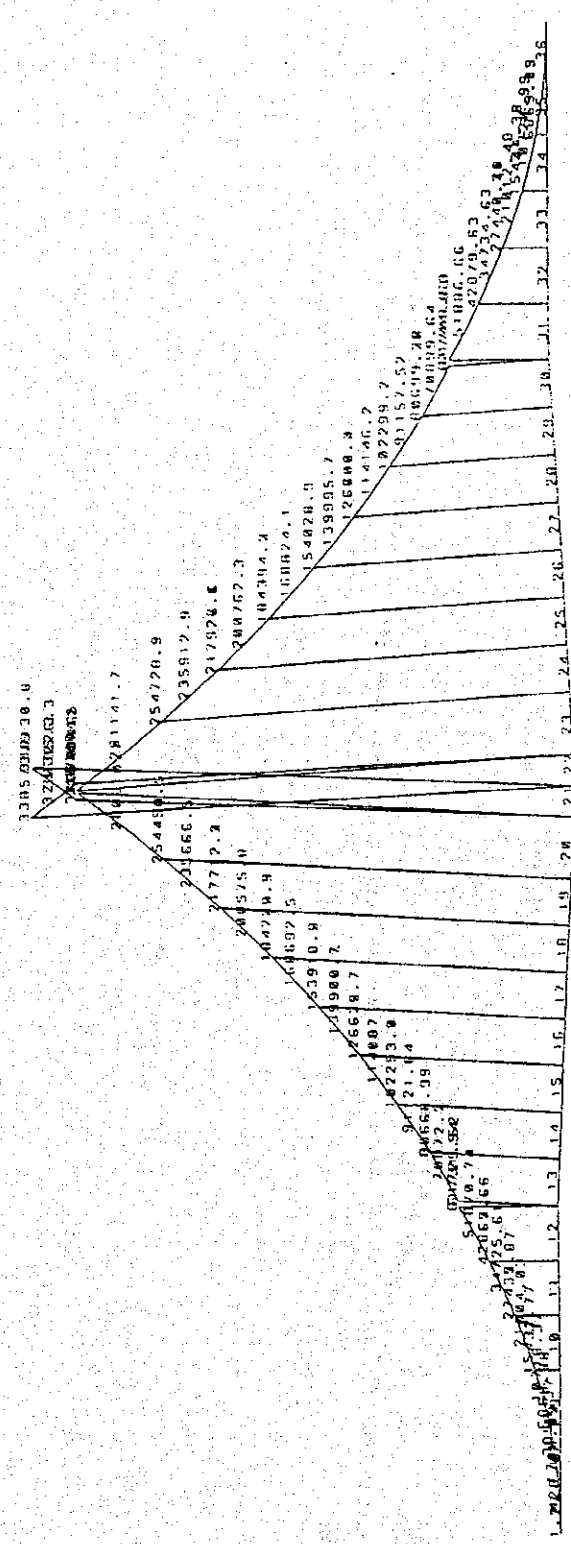
202. 286 286 287  
 203. 287 287 288  
 204. 288 288 289  
 205. 289 289 290  
 206. 290 290 291  
 207. 291 291 292  
 208. 292 292 293  
 209. 293 293 294  
 210. 294 294 295  
 211. 295 295 296  
 212. 296 296 297  
 213. 297 297 298  
 214. 298 298 299  
 215. 299 299 300  
 216. 300 300 301  
 217. 301 301 302  
 218. 302 302 303  
 219. 303 303 304  
 220. 304 304 305  
 221. 305 305 306  
 222. 306 306 307  
 223. 307 307 308  
 224. 308 308 309  
 225. 309 242 310  
 226. 310 310 311  
 227. 311 311 312  
 228. 312 312 314  
 229. 313 314 315  
 230. 314 315 316  
 231. 315 316 317  
 232. 316 317 318  
 233. 317 318 319  
 234. 318 319 320  
 235. 319 320 321  
 236. 320 321 322  
 237. 321 322 323  
 238. 322 323 324  
 239. 323 324 325  
 240. 324 325 326  
 241. 325 326 327  
 242. 326 327 328  
 243. 327 328 329  
 244. 328 329 330  
 245. 329 330 331  
 246. 330 331 333  
 247. 331 333 333  
 248. 332 333 334  
 249. 333 334 335  
 250. 334 335 336  
 251. 335 336 337  
 252. 336 337 338  
 253. 337 338 339  
 254. 338 339 340  
 255. 339 340 341  
 256. 340 341 342  
 257. 341 342 343  
 258. 342 343 344  
 259. 343 344 345  
 260. 344 345 346  
 261. 345 346 347  
 262. 346 347 348  
 263. 347 348 349  
 264. 348 349 350  
 265. 349 350 351  
 266. 350 351 352  
 267. 351 352 353  
 268. 352 353 354  
 269. 353 354 332  
 270. 354 332 355

271. MEMBER PROPERTY AMERICAN  
 272. 7 TO 12 31 TO 36 PRI AX 11.661 IX 227.335 IY 211.669 IZ 15.686 YD 3.12  
 273. 13 30 PRI AX 11.976 IX 232.635 IY 214.3 IZ 18.344 YD 3.45  
 274. 14 29 PRI AX 12.595 IX 243.458 IY 219.291 IZ 24.092 YD 3.79  
 275. 15 28 PRI AX 13.192 IX 254.458 IY 223.749 IZ 30.71 YD 4.13  
 276. 16 27 PRI AX 13.767 IX 265.913 IY 227.707 IZ 38.206 YD 4.46  
 277. 17 26 PRI AX 14.319 IX 277.778 IY 231.196 IZ 46.582 YD 4.8  
 278. 18 25 PRI AX 14.849 IX 290.081 IY 234.246 IZ 55.835 YD 5.13  
 279. 19 24 PRI AX 15.357 IX 302.84 IY 236.885 IZ 65.955 YD 5.47  
 280. 20 23 PRI AX 15.919 IX 318.365 IY 239.447 IZ 78.918 YD 5.92  
 281. 21 22 PRI AX 16.232 IX 327.395 IY 240.789 IZ 86.606 YD 5.92  
 282. 203 204 207 208 PRI AX 16.5 IX 92.71 IY 29.69 IZ 63.02  
 283. 205 206 PRI AX 14.5 IX 72.7 IY 24.02 IZ 48.68  
 284. 239 TO 242 263 TO 354 PRI AX 14.73 IX 11.505 IY 5.752 IZ 5.752  
 285. CONSTANT  
 286. E 2.500E7 ALL  
 287. POISSON CONCRETE ALL  
 288. ALPHA .0000108 MEMB 7 TO 36  
 289. DENSITY 24. MEMB 7 TO 36 203 TO 208 239 TO 242  
 290. DENSITY 14.2 MEMB 239 TO 242 263 TO 354  
 291. SUPPORT  
 292. 266 312 FIXED BUT FY MX MY MZ KFX 4.370E4 KFZ 4.370E4  
 293. 267 TO 270 314 TO 317 FIXED BUT FY MX MY MZ KFX 8.750E4 KFZ 8.750E4  
 294. 271 318 FIXED BUT FY MX MY MZ KFX 112840. KFZ 112840.  
 295. 272 273 319 320 FIXED BUT FY MX MY MZ KFX 3.030E5 KFZ 3.030E5  
 296. 274 TO 281 321 TO 328 FIXED BUT FY MX MY MZ KFX 3.930E5 KFZ 3.930E5  
 297. 282 283 329 330 FIXED BUT FY MX MY MZ KFX 5.237E5 KFZ 5.237E5  
 298. 284 TO 288 313 331 333 TO 334 -  
 299. 335 FIXED BUT FY MX MY MZ KFX 1.560E6 KFZ 1.560E6  
 300. 289 TO 308 332 336 TO 354 FIXED BUT FY MX MY MZ KFX 1.426E6 KFZ 1.426E6  
 301. 309 355 FIXED

**DEAD LOAD**  
**OF FRAME 1 – CANTILEVER CONSTRUCTION**

THE UNIVERSITY OF CHICAGO  
LIBRARY

MN/ELEM  
MOMENT M2 LN= 1



STRUCTURE DATA  
 TYPE = SPACE  
 NJ = 133  
 NM = 132  
 NE = 0  
 NS = 0  
 NRJ = 88  
 NL = 3  
 XMAX = 96.0  
 YMAX = 121.3  
 ZMAX = .0

Maximum = 338573.50  
 J=133, M=132

5200

UNIT MET KNS

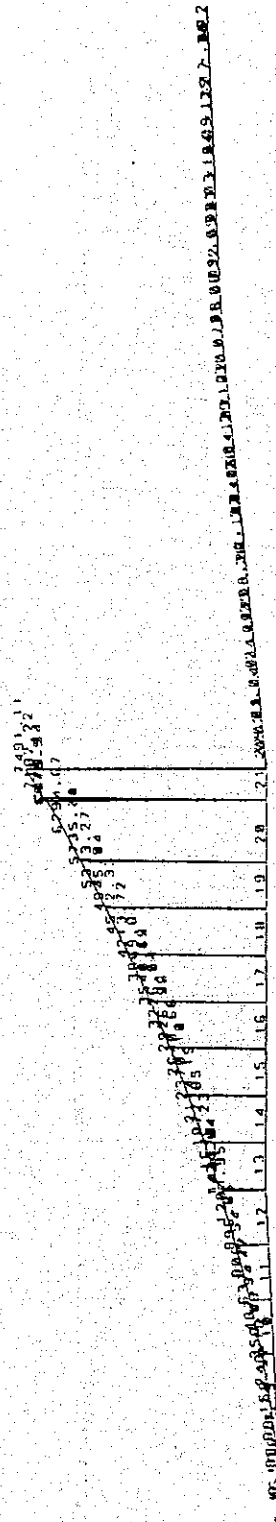
ST A A D P O S T P I L O I ( I I V : 2 2 . 1 )  
 TITLE: RUPSA BRIDGE IN KIULNA

DATE: JAN 24, 2000

MN/ELEM  
MOMENT MZ LN= 12

STRUCTURE DATA

TYPE = SPACE  
NJ = 133  
NM = 132  
NE = 0  
NS = 0  
NRJ = 88  
NL = 3  
XMAX = 96.0  
YMAX = 121.3  
ZMAX = .0



UNITS MET KNS

DATE: JAN 24, 2000

STAAD POST - PLOT (REV: 22.3)

TITLE: RUPSA BRIDGE IN KHULNA

MN/ELEM  
MOMENT MZ LNE 3

STRUCTURE DATA

TYPE = SPACE

NJ = 133

NH = 132

NE = 0

NS = 0

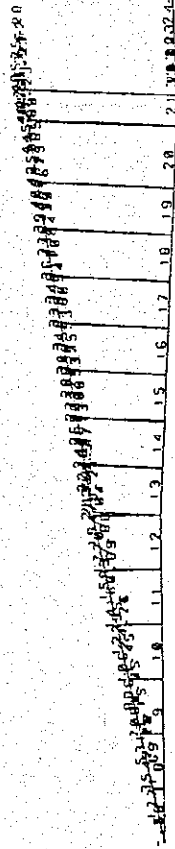
NRJ = 88

NL = 3

XMAX = 96.0

YMAX = 121.3

ZMAX = .0



Maximum = 48575.20  
J=133, M=132

UNIT: MET KNS

S T A A D P O S T P I O T ( R I V E : 2 2 . 3 )

DATE: JAN 24, 2000

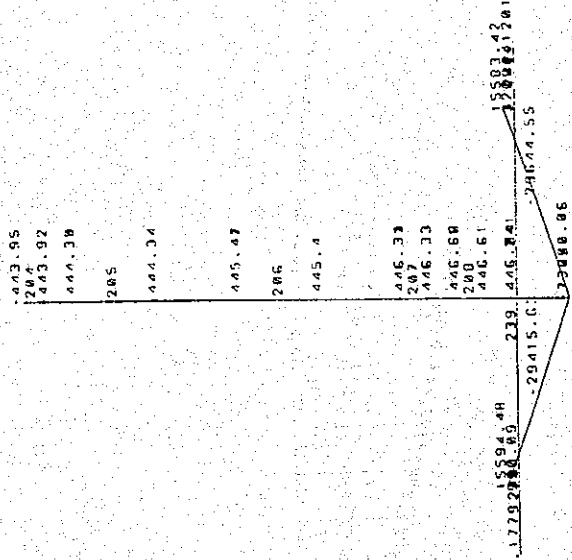
TITLE: RUPSA BRIDGE IN KHULNA



MN/ELEM  
MOMENT M7 LNE 1

STRUCTURE DATA

TYPE = SPACE  
 NJ = 133  
 NM = 132  
 NE = 0  
 NS = 0  
 NRJ = 88  
 NL = 3  
 XMAX = 96.0  
 YMAX = 121.3  
 ZMAX = .0



Maximum: 73690.46  
 J=133, M=132

UNIT: MET KNS

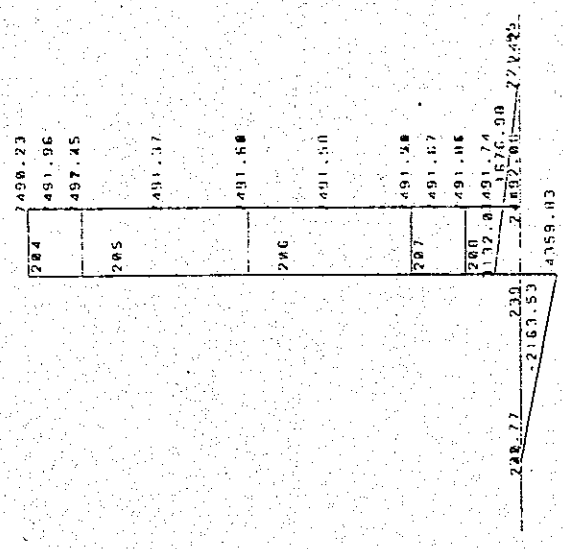
DATE: JAN 24, 2000

S I A A D P O S T - P L O T (REV: 22.3)  
 TITLE: RUPSA BRIDGE IN KHULNA

MN/ELEM  
MOMENT MZ LN= 2

STRUCTURE DATA

TYPE = SPACE  
 NJ = 133  
 NM = 132  
 NE = 0  
 NS = 0  
 NRJ = 88  
 NL = 3  
 XMAX = 96.0  
 YMAX = 121.3  
 ZMAX = .0



Maximum= 7493.39  
 J=133, ME132

UNIT MET KNS

S T A A O P O S T - P L O T (REV: 22.3 )  
 DATE: JAN 24, 2000  
 TITLE: RUPSA BRIDGE IN KHULNA

MN/ELEM  
MOMENT MZ LNE 3

STRUCTURE DATA

TYPE = SPACE  
 NJ = 133  
 NH = 132  
 NE = 0  
 NS = 0  
 NRJ = 88  
 NL = 3  
 XMAX = 96.0  
 YMAX = 121.3  
 ZMAX = .0

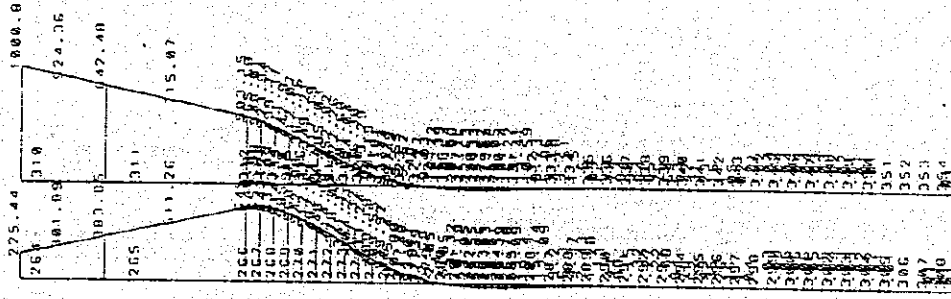
200	40579.8
201	8579.27
202	8581.87
205	0500.07
206	0588.92
207	0585.02
208	0500.80
209	8590.30
210	8590.82
211	8590.77
212	8590.64
213	8590.64
214	8590.64
215	8590.64
216	8590.64
217	8590.64
218	8590.64
219	8590.64
220	8590.64
221	8590.64
222	8590.64
223	8590.64
224	8590.64
225	8590.64
226	8590.64
227	8590.64
228	8590.64
229	8590.64
230	8590.64
231	8590.64
232	8590.64
233	8590.64
234	8590.64
235	8590.64
236	8590.64
237	8590.64
238	8590.64
239	8590.64
240	8590.64
241	8590.64
242	8590.64
243	8590.64
244	8590.64
245	8590.64
246	8590.64
247	8590.64
248	8590.64
249	8590.64
250	8590.64
251	8590.64
252	8590.64
253	8590.64
254	8590.64
255	8590.64
256	8590.64
257	8590.64
258	8590.64
259	8590.64
260	8590.64
261	8590.64
262	8590.64
263	8590.64
264	8590.64
265	8590.64
266	8590.64
267	8590.64
268	8590.64
269	8590.64
270	8590.64
271	8590.64
272	8590.64
273	8590.64
274	8590.64
275	8590.64
276	8590.64
277	8590.64
278	8590.64
279	8590.64
280	8590.64
281	8590.64
282	8590.64
283	8590.64
284	8590.64
285	8590.64
286	8590.64
287	8590.64
288	8590.64
289	8590.64
290	8590.64
291	8590.64
292	8590.64
293	8590.64
294	8590.64
295	8590.64
296	8590.64
297	8590.64
298	8590.64
299	8590.64
300	8590.64

Maximum = 48591.87  
 J=133, M=132

UNIT MET KNS

S T A A O P O S T - P L O T (REV: 22.3 )  
 DATE: JAN 24, 2000  
 TITLE: RUPSA BRIDGE IN KHULNA

MN/ELEM  
MOMENT MZ LN= 3



STRUCTURE DATA  
 TYPE = SPACE  
 NJ = 133  
 NM = 132  
 NE = 0  
 NS = 0  
 NRJ = 88  
 NL = 3  
 XMAX = 96.0  
 YMAX = 121.3  
 ZMAX = .0

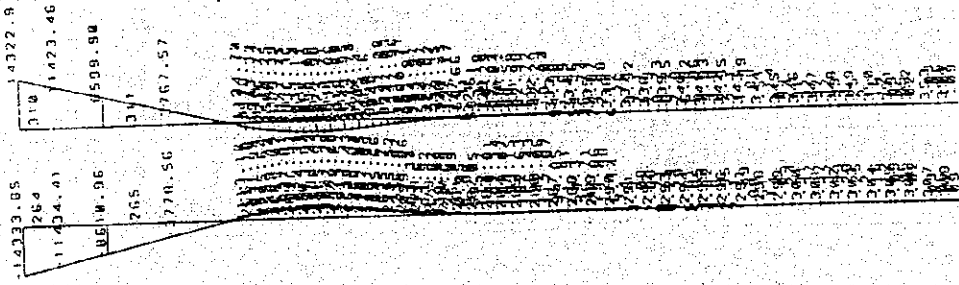
Maximum = 1000.00  
 J=133, M=132

UNIT MET KNS

DATE: JAN 24, 2000

S T A A D P O S T P L O T (IIVE: 22.0 )  
 TITLE: RUPSA BRIDGE IN KHULNA

MN/ELEM  
MOMENT MZ LNE= 1



STRUCTURE DATA

TYPE = SPACE  
 NJ = 133  
 NH = 132  
 NE = 0  
 NS = 0  
 NRJ = 88  
 NL = 3  
 XMAX = 96.0  
 YMAX = 121.3  
 ZMAX = .0

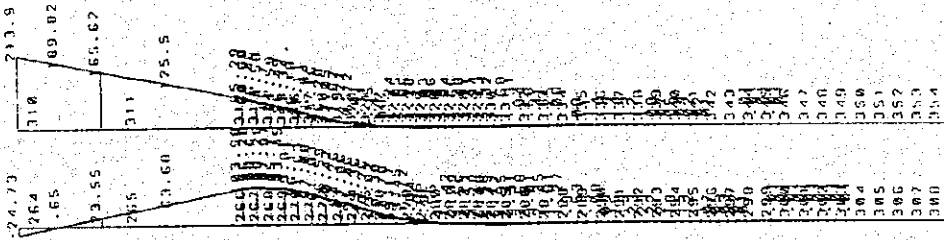
Maximum= 14333.85  
 J=133,M=132

UNIT MET KNS

DATE: JAN 24, 2000

S T A A D P O S T - P L O I (HEV: 22.3 )  
 TITLE: RUPSA BRIDGE IN KHULNA

MN/ELEM  
MOMENT M2 LN= 2



STRUCTURE DATA  
 TYPE = SPACE  
 NJ = 133  
 NH = 132  
 NE = 0  
 NS = 0  
 NRJE = 88  
 NL = 3  
 XMAX = 96.0  
 YMAX = 121.3  
 ZMAX = .0

Maximum = 213.90  
 J=133, M=132

UNIT MET KNS

S T A A D P O S I - P I O I (REV: 22.3)

DATE: JAN 24, 2000

TITLE: RUPSA BRIDGE IN KHULNA

# THE STUDY ON THE CONSTRUCTION OF THE BRIDGE OVER THE RIVER RUPSA IN KHULNA, PHASE - 2

Job No. :                      Designed by :                      Checked by :                      Date :                      January 24, 2000

## LOADS

LOAD 1 :        SELFWEIGHT OF THE STRUCTURE

SELFWEIGHT Y -I

LOAD 2 :        DIFFERENTIAL DL ON ONE SIDE OF CANTILEVER

MEMBER LOAD  
7 TO 21 UNI GY -6.50

LOAD 3 :        SEGMENT UNBALANCE LOAD

JOINT LOAD  
7 FY - 1012

# THE STUDY ON THE CONSTRUCTION OF THE BRIDGE OVER THE RIVER RUPSA IN KHULNA, PHASE - 2

Job No. :

Designed by :

Checked by :

Date :

January 24, 2000

## DEAD LOAD ANALYSIS

MEMB	LOAD	NODE	AXIAL	SHEAR-Y	SHEAR-Z	TORSION	MOM-Y	MOM-Z
7	1	7	-0.01	0.59	0.00	0.00	0.00	1.27
		8	29.39	978.94	0.00	0.00	0.00	-1,713.17
	2	7	-0.02	-0.01	0.00	0.00	0.00	-0.05
		8	0.70	22.76	0.00	0.00	0.00	-39.71
	3	7	-30.49	-1,012.27	0.00	0.00	0.00	-0.58
		8	30.49	1,012.27	0.00	0.00	0.00	-3,542.11
8	1	8	-29.42	-982.21	0.00	0.00	0.00	1,709.99
		9	58.81	1,961.74	0.00	0.00	0.00	-6,863.83
	2	8	-0.70	-22.85	0.00	0.00	0.00	39.77
		9	1.38	45.60	0.00	0.00	0.00	-159.52
	3	8	-30.59	-1,011.47	0.00	0.00	0.00	3,542.28
		9	30.59	1,011.47	0.00	0.00	0.00	-7,082.75
9	1	9	-58.75	-1,959.49	0.00	0.00	0.00	6,858.98
		10	88.14	2,939.02	0.00	0.00	0.00	-15,432.77
	2	9	-1.38	-45.38	0.00	0.00	0.00	159.77
		10	2.06	68.13	0.00	0.00	0.00	-358.09
	3	9	-30.43	-1,010.34	0.00	0.00	0.00	7,084.55
		10	30.43	1,010.34	0.00	0.00	0.00	-10,624.21
10	1	10	-88.14	-2,937.88	0.00	0.00	0.00	15,431.70
		11	117.52	3,917.40	0.00	0.00	0.00	-27,435.87
	2	10	-2.07	-68.25	0.00	0.00	0.00	358.49
		11	2.75	91.00	0.00	0.00	0.00	-637.22
	3	10	-30.52	-1,011.11	0.00	0.00	0.00	10,624.76
		11	30.52	1,011.11	0.00	0.00	0.00	-14,166.89
11	1	11	-117.49	-3,917.78	0.00	0.00	0.00	27,437.67
		12	146.88	4,897.30	0.00	0.00	0.00	-42,865.66
	2	11	-2.73	-90.94	0.00	0.00	0.00	637.37
		12	3.41	113.69	0.00	0.00	0.00	-995.75
	3	11	-30.39	-1,010.99	0.00	0.00	0.00	14,167.85
		12	30.39	1,010.99	0.00	0.00	0.00	-17,707.27
12	1	12	-146.92	-4,897.43	0.00	0.00	0.00	42,867.65
		13	176.30	5,876.95	0.00	0.00	0.00	-61,731.54
	2	12	-3.42	-113.88	0.00	0.00	0.00	995.61
		13	4.10	136.63	0.00	0.00	0.00	-1,434.04
	3	12	-30.16	-1,011.87	0.00	0.00	0.00	17,707.64
		13	30.16	1,011.87	0.00	0.00	0.00	-21,250.90
13	1	13	148.91	-5,877.60	0.00	0.00	0.00	61,729.52
		14	-170.76	6,739.87	0.00	0.00	0.00	-80,665.55
	2	13	3.46	-136.63	0.00	0.00	0.00	1,433.90
		14	-3.96	156.13	0.00	0.00	0.00	-1,872.85
	3	13	25.46	-1,010.79	0.00	0.00	0.00	21,252.47
		14	-25.46	1,010.79	0.00	0.00	0.00	-24,284.46
14	1	14	175.22	-6,739.89	0.00	0.00	0.00	80,668.39
		15	-198.80	7,646.73	0.00	0.00	0.00	-102,253.40
	2	14	4.04	-155.96	0.00	0.00	0.00	1,872.85
		15	-4.55	175.46	0.00	0.00	0.00	-2,370.14
	3	14	26.24	-1,012.26	0.00	0.00	0.00	24,284.63
		15	-26.24	1,012.26	0.00	0.00	0.00	-27,324.70
15	1	15	201.42	-7,648.57	0.00	0.00	0.00	102,253.90
		16	-226.43	8,598.39	0.00	0.00	0.00	-126,632.70
	2	15	4.62	-175.39	0.00	0.00	0.00	2,370.16
		16	-5.13	194.89	0.00	0.00	0.00	-2,926.28
	3	15	26.67	-1,010.30	0.00	0.00	0.00	27,322.55
		16	-26.67	1,010.30	0.00	0.00	0.00	-30,358.83
16	1	16	229.26	-8,596.40	0.00	0.00	0.00	126,629.70
		17	-255.69	9,587.63	0.00	0.00	0.00	-153,918.20
	2	16	5.25	-195.14	0.00	0.00	0.00	2,925.92
		17	-5.77	214.64	0.00	0.00	0.00	-3,413.2

15



## THE STUDY ON THE CONSTRUCTION OF THE BRIDGE OVER THE RIVER RUPSA IN KHULNA, PHASE - 2

Job No. :	Designed by :	Checked by :	Date :	January 24, 2000				
	3	16	27.00	-1,012.08	0.00	0.00	0.00	30,359.88
		17	-27.00	1,012.08	0.00	0.00	0.00	-33,395.18
17	1	17	255.69	-9,587.80	0.00	0.00	0.00	153,918.90
		18	-283.19	10,618.77	0.00	0.00	0.00	-184,239.50
	2	17	5.72	-214.50	0.00	0.00	0.00	3,540.69
		18	-6.24	234.00	0.00	0.00	0.00	-4,213.77
	3	17	27.32	-1,012.07	0.00	0.00	0.00	33,395.18
		18	-27.32	1,012.07	0.00	0.00	0.00	-36,431.39
18	1	18	283.22	-10,617.46	0.00	0.00	0.00	184,242.90
		19	-311.73	11,686.59	0.00	0.00	0.00	-217,712.20
	2	18	6.29	-234.12	0.00	0.00	0.00	4,213.72
		19	-6.81	253.62	0.00	0.00	0.00	-4,945.50
	3	18	27.15	-1,011.00	0.00	0.00	0.00	36,432.12
		19	-27.15	1,011.00	0.00	0.00	0.00	-39,466.15
19	1	19	303.94	-11,688.89	0.00	0.00	0.00	217,712.40
		20	-332.69	12,794.60	0.00	0.00	0.00	-254,452.00
	2	19	6.60	-253.59	0.00	0.00	0.00	4,945.44
		20	-7.11	273.09	0.00	0.00	0.00	-5,735.36
	3	19	26.05	-1,011.28	0.00	0.00	0.00	39,467.23
		20	-26.05	1,011.28	0.00	0.00	0.00	-42,503.66
20	1	20	323.11	-12,793.81	0.00	0.00	0.00	254,450.50
		21	-361.70	14,322.04	0.00	0.00	0.00	-308,700.20
	2	20	6.90	-273.02	0.00	0.00	0.00	5,735.44
		21	-7.55	299.02	0.00	0.00	0.00	-6,879.94
	3	20	25.63	-1,011.63	0.00	0.00	0.00	42,503.34
		21	-25.63	1,011.63	0.00	0.00	0.00	-46,551.27
21	1	21	179.20	-14,328.76	0.00	0.00	0.00	308,701.60
		22	-188.94	15,107.90	0.00	0.00	0.00	-338,130.80
	2	21	3.69	-299.05	0.00	0.00	0.00	6,879.90
		22	-3.85	312.05	0.00	0.00	0.00	-7,491.11
	3	21	12.66	-1,011.60	0.00	0.00	0.00	46,551.93
		22	-12.66	1,011.60	0.00	0.00	0.00	-48,575.28
22	1	22	1,094.50	-15,093.89	0.00	0.00	0.00	338,573.50
		23	-1,038.01	14,314.75	0.00	0.00	0.00	-309,084.00
	2	22	-0.03	-0.03	0.00	0.00	0.00	-0.05
		23	0.03	0.03	0.00	0.00	0.00	0.01
	3	22	0.10	-0.30	0.00	0.00	0.00	0.33
		23	-0.10	0.30	0.00	0.00	0.00	0.20
23	1	23	1,219.37	-14,302.96	0.00	0.00	0.00	309,084.50
		24	-1,089.09	12,774.74	0.00	0.00	0.00	-254,728.30
	2	23	0.01	-0.02	0.00	0.00	0.00	-0.07
		24	-0.01	0.02	0.00	0.00	0.00	-0.01
	3	23	0.21	-0.09	0.00	0.00	0.00	0.06
		24	-0.21	0.09	0.00	0.00	0.00	-0.33
24	1	24	1,098.60	-12,774.24	0.00	0.00	0.00	254,728.90
		25	-1,003.51	11,668.54	0.00	0.00	0.00	-217,926.10
	2	24	0.03	-0.05	0.00	0.00	0.00	0.00
		25	-0.03	0.05	0.00	0.00	0.00	-0.02
	3	24	-0.10	0.34	0.00	0.00	0.00	0.20
		25	0.10	-0.34	0.00	0.00	0.00	0.39
25	1	25	1,011.16	-11,668.15	0.00	0.00	0.00	217,927.60
		26	-918.50	10,599.02	0.00	0.00	0.00	-184,394.20
	2	25	-0.04	0.15	0.00	0.00	0.00	0.31
		26	0.04	-0.15	0.00	0.00	0.00	0.26
	3	25	-0.18	0.34	0.00	0.00	0.00	0.60
		26	0.18	-0.34	0.00	0.00	0.00	0.74
26	1	26	918.45	-10,599.12	0.00	0.00	0.00	184,394.30
		27	-829.10	9,568.15	0.00	0.00	0.00	-154,028.30
	2	26	-0.03	-0.22	0.00	0.00	0.00	-0.13
		27	0.03	0.22	0.00	0.00	0.00	-0.14
	3	26	-0.01	-0.43	0.00	0.00	0.00	-0.90
		27	0.01	0.43	0.00	0.00	0.00	-0.89
27	1	27	829.20	-9,568.09	0.00	0.00	0.00	154,028.50
		28	-743.30	8,576.86	0.00	0.00	0.00	-126,899.40

# THE STUDY ON THE CONSTRUCTION OF THE BRIDGE OVER THE RIVER RUPSA IN KHULNA, PHASE - 2

Job No. :                      Designed by :                      Checked by :                      Date :                      January 24, 2000

	2	27	-0.01	-0.07	0.00	0.00	0.00	-0.07
		28	0.01	0.07	0.00	0.00	0.00	-0.16
	3	27	-0.07	-0.83	0.00	0.00	0.00	-0.88
		28	0.07	0.83	0.00	0.00	0.00	-0.85
28	1	28	740.40	8,575.84	0.00	0.00	0.00	126,700.30
		29	-658.40	-7,626.01	0.00	0.00	0.00	-102,299.70
	2	28	0.02	0.01	0.00	0.00	0.00	0.05
		29	-0.02	-0.01	0.00	0.00	0.00	0.07
	3	28	0.17	0.30	0.00	0.00	0.00	-0.86
		29	-0.17	-0.30	0.00	0.00	0.00	-0.24
29	1	29	655.92	7,627.21	0.00	0.00	0.00	102,299.20
		30	-577.93	-6,720.37	0.00	0.00	0.00	-80,693.22
	2	29	0.01	0.25	0.00	0.00	0.00	0.18
		30	-0.01	-0.25	0.00	0.00	0.00	0.21
	3	29	-0.05	-0.88	0.00	0.00	0.00	-1.74
		30	0.05	0.88	0.00	0.00	0.00	-1.16
30	1	30	573.67	6,722.39	0.00	0.00	0.00	80,695.36
		31	-500.09	-5,860.12	0.00	0.00	0.00	-61,744.83
	2	30	-0.03	0.18	0.00	0.00	0.00	0.20
		31	0.03	-0.18	0.00	0.00	0.00	0.25
	3	30	0.00	0.35	0.00	0.00	0.00	0.68
		31	0.00	-0.35	0.00	0.00	0.00	0.12
31	1	31	176.39	5,877.71	0.00	0.00	0.00	61,748.53
		32	-147.00	-4,898.18	0.00	0.00	0.00	-42,879.63
	2	31	0.00	0.00	0.00	0.00	0.00	-0.08
		32	0.00	0.00	0.00	0.00	0.00	-0.10
	3	31	0.08	0.49	0.00	0.00	0.00	0.52
		32	-0.08	-0.49	0.00	0.00	0.00	0.48
32	1	32	146.90	4,896.99	0.00	0.00	0.00	42,879.50
		33	-117.52	-3,917.47	0.00	0.00	0.00	-27,446.48
	2	32	0.01	0.08	0.00	0.00	0.00	0.09
		33	-0.01	-0.08	0.00	0.00	0.00	0.01
	3	32	0.08	0.08	0.00	0.00	0.00	0.46
		33	-0.08	-0.08	0.00	0.00	0.00	0.35
33	1	33	117.42	3,916.22	0.00	0.00	0.00	27,440.21
		34	-88.03	-2,936.69	0.00	0.00	0.00	-15,441.38
	2	33	0.01	0.00	0.00	0.00	0.00	0.02
		34	-0.01	0.00	0.00	0.00	0.00	0.01
	3	33	0.08	0.19	0.00	0.00	0.00	1.23
		34	-0.08	-0.19	0.00	0.00	0.00	1.10
34	1	34	88.20	2,937.02	0.00	0.00	0.00	15,434.35
		35	-58.81	-1,957.50	0.00	0.00	0.00	-6,863.49
	2	34	0.04	0.02	0.00	0.00	0.00	0.13
		35	-0.04	-0.02	0.00	0.00	0.00	0.12
	3	34	0.07	-0.17	0.00	0.00	0.00	0.10
		35	-0.07	0.17	0.00	0.00	0.00	0.02
35	1	35	58.72	1,959.46	0.00	0.00	0.00	6,859.35
		36	-29.33	-979.93	0.00	0.00	0.00	-1,716.54
	2	35	0.03	-0.03	0.00	0.00	0.00	0.12
		36	-0.03	0.03	0.00	0.00	0.00	0.11
	3	35	0.07	0.31	0.00	0.00	0.00	0.77
		36	-0.07	-0.31	0.00	0.00	0.00	0.75
36	1	36	29.33	979.75	0.00	0.00	0.00	1,715.24
		37	0.05	-0.22	0.00	0.00	0.00	-1.24
	2	36	0.00	-0.09	0.00	0.00	0.00	-0.05
		37	0.00	0.09	0.00	0.00	0.00	-0.06
	3	36	0.12	-0.17	0.00	0.00	0.00	-1.00
		37	-0.12	0.17	0.00	0.00	0.00	-1.10
204	1	204	31,589.47	-0.04	0.00	0.00	0.00	-443.95
		205	-32,183.46	0.04	0.00	0.00	0.00	444.35
	2	204	312.12	-2.30	0.00	0.00	0.00	7,490.23
		205	-312.12	2.30	0.00	0.00	0.00	-7,492.25
	3	204	1,012.02	0.77	0.00	0.00	0.00	48,579.80
		205	-1,012.02	-0.77	0.00	0.00	0.00	(48,577.32)

# THE STUDY ON THE CONSTRUCTION OF THE BRIDGE OVER THE RIVER RUPSA IN KHULNA, PHASE - 2

Job No. : \_\_\_\_\_ Designed by : \_\_\_\_\_ Checked by : \_\_\_\_\_ Date : January 24, 2000

205	1	205	32,182.79	0.00	0.00	0.00	0.00	-444.34
		206	-33,748.79	0.00	0.00	0.00	0.00	445.42
	2	205	312.11	0.02	0.00	0.00	0.00	7,491.40
		206	-312.11	-0.02	0.00	0.00	0.00	-7,491.58
	3	205	1,012.02	0.17	0.00	0.00	0.00	48,581.21
		206	-1,012.02	-0.17	0.00	0.00	0.00	-48,584.93
206	1	206	33,748.86	0.00	0.00	0.00	0.00	-445.41
		207	-35,314.86	0.00	0.00	0.00	0.00	446.31
	2	206	312.11	0.01	0.00	0.00	0.00	7,491.61
		207	-312.11	-0.01	0.00	0.00	0.00	-7,491.71
	3	206	1,012.01	0.14	0.00	0.00	0.00	48,585.32
		207	-1,012.01	-0.14	0.00	0.00	0.00	-48,588.22
207	1	207	35,315.01	0.00	0.00	0.00	0.00	-446.33
		208	-35,909.00	0.00	0.00	0.00	0.00	446.58
	2	207	312.11	-0.12	0.00	0.00	0.00	7,491.58
		208	-312.11	0.12	0.00	0.00	0.00	-7,491.96
	3	207	1,012.01	-2.40	0.00	0.00	0.00	48,588.58
		208	-1,012.01	2.40	0.00	0.00	0.00	-48,590.47
239	1	209	644.32	-18,205.51	0.00	0.00	0.00	-73,243.65
		240	-644.32	19,199.05	0.00	0.00	0.00	-15,594.48
	2	209	5.35	-924.76	0.00	0.00	0.00	-4,359.83
		240	-5.35	924.76	0.00	0.00	0.00	-32.77
	3	209	17.00	-5,491.69	0.00	0.00	0.00	-26,284.48
		240	-17.00	5,491.69	0.00	0.00	0.00	198.96
240	1	240	0.00	365.92	0.00	0.00	0.00	320.09
		241	0.00	0.12	0.00	0.00	0.00	-0.17
	2	240	0.00	0.00	0.00	0.00	0.00	0.00
		241	0.00	0.00	0.00	0.00	0.00	0.00
	3	240	0.00	-0.01	0.00	0.00	0.00	0.00
		241	0.00	0.01	0.00	0.00	0.00	0.00
241	1	209	644.32	-18,297.26	0.00	0.00	0.00	-73,690.46
		242	-644.32	19,290.79	0.00	0.00	0.00	-15,583.42
	2	209	5.36	-612.64	0.00	0.00	0.00	3,132.01
		242	-5.36	612.64	0.00	0.00	0.00	-221.95
	3	209	16.98	-4,479.68	0.00	0.00	0.00	22,305.89
		242	-16.98	4,479.68	0.00	0.00	0.00	-1,027.42
242	1	242	0.01	366.16	0.00	0.00	0.00	320.44
		243	-0.01	-0.11	0.00	0.00	0.00	0.01
	2	242	-0.01	0.00	0.00	0.00	0.00	0.00
		243	0.01	0.00	0.00	0.00	0.00	0.00
	3	242	-0.01	0.06	0.00	0.00	0.00	0.03
		243	0.01	-0.06	0.00	0.00	0.00	0.01
263	1	240	19,565.06	-644.29	0.00	0.00	0.00	-15,274.17
		264	-19,878.80	644.29	0.00	0.00	0.00	14,333.88
	2	240	924.76	-5.35	0.00	0.00	0.00	-32.78
		264	-924.76	5.35	0.00	0.00	0.00	24.72
	3	240	5,491.71	-16.94	0.00	0.00	0.00	198.93
		264	-5,491.71	16.94	0.00	0.00	0.00	-225.41
264	1	264	19,878.87	-644.32	0.00	0.00	0.00	-14,333.85
		265	-21,761.36	644.32	0.00	0.00	0.00	8,610.96
	2	264	924.76	-5.35	0.00	0.00	0.00	-24.73
		265	-924.76	5.35	0.00	0.00	0.00	-23.55
	3	264	5,491.69	-16.99	0.00	0.00	0.00	225.44
		265	-5,491.69	16.99	0.00	0.00	0.00	-383.85
265	1	265	21,761.36	-644.32	0.00	0.00	0.00	-8,610.96
		266	-24,898.85	644.32	0.00	0.00	0.00	-1,113.17
	2	265	924.76	-5.35	0.00	0.00	0.00	23.55
		266	-924.76	5.35	0.00	0.00	0.00	-103.98
	3	265	5,491.69	-16.99	0.00	0.00	0.00	383.85
		266	-5,491.69	16.99	0.00	0.00	0.00	-645.00
266	1	266	24,898.79	-538.70	0.00	0.00	0.00	1,113.16
		267	-25,212.54	538.70	0.00	0.00	0.00	-1,931.95

## THE STUDY ON THE CONSTRUCTION OF THE BRIDGE OVER THE RIVER RUPSA IN KHULNA, PHASE - 2

Job No. :	Designed by :	Checked by :	Date :					
			January 24, 2000					
	2	266	924.76	-3.07	0.00	0.00	0.00	103.98
		267	-924.76	3.07	0.00	0.00	0.00	-108.60
	3	266	5,491.69	-5.08	0.00	0.00	0.00	645.00
		267	-5,491.69	5.08	0.00	0.00	0.00	-652.98
267	1	267	25,212.70	-364.93	0.00	0.00	0.00	1,931.94
		268	-25,526.44	364.93	0.00	0.00	0.00	-2,489.44
	2	267	924.76	0.43	0.00	0.00	0.00	108.60
		268	-924.76	-0.43	0.00	0.00	0.00	-107.97
	3	267	5,491.69	12.93	0.00	0.00	0.00	652.98
		268	-5,491.69	-12.93	0.00	0.00	0.00	-653.89
268	1	268	25,526.42	-226.12	0.00	0.00	0.00	2,489.42
		269	-25,840.17	226.12	0.00	0.00	0.00	-2,837.81
	2	268	924.76	3.02	0.00	0.00	0.00	107.97
		269	-924.76	-3.02	0.00	0.00	0.00	-103.45
	3	268	5,491.71	26.00	0.00	0.00	0.00	633.89
		269	-5,491.71	-26.00	0.00	0.00	0.00	-595.14
269	1	269	25,840.13	-118.88	0.00	0.00	0.00	2,837.81
		270	-26,153.88	118.88	0.00	0.00	0.00	-3,024.33
	2	269	924.76	4.85	0.00	0.00	0.00	103.45
		270	-924.76	-4.85	0.00	0.00	0.00	-96.17
	3	269	5,491.69	34.97	0.00	0.00	0.00	595.15
		270	-5,491.69	-34.97	0.00	0.00	0.00	-542.88
270	1	270	26,153.80	-39.36	0.00	0.00	0.00	3,024.31
		271	-26,467.53	39.36	0.00	0.00	0.00	-3,090.43
	2	270	924.76	6.06	0.00	0.00	0.00	96.17
		271	-924.76	-6.06	0.00	0.00	0.00	-87.08
	3	270	5,491.69	40.68	0.00	0.00	0.00	542.88
		271	-5,491.69	-40.68	0.00	0.00	0.00	-482.02
271	1	271	26,467.56	32.68	0.00	0.00	0.00	3,090.44
		272	-26,781.31	-32.68	0.00	0.00	0.00	-3,047.26
	2	271	924.75	7.00	0.00	0.00	0.00	87.08
		272	-924.75	-7.00	0.00	0.00	0.00	-76.59
	3	271	5,491.68	44.78	0.00	0.00	0.00	482.02
		272	-5,491.68	-44.78	0.00	0.00	0.00	-414.98
272	1	272	26,781.30	158.91	0.00	0.00	0.00	3,047.27
		273	-27,095.05	-158.91	0.00	0.00	0.00	-2,813.57
	2	272	924.76	8.22	0.00	0.00	0.00	76.59
		273	-924.76	-8.22	0.00	0.00	0.00	-64.26
	3	272	5,491.70	49.27	0.00	0.00	0.00	414.98
		273	-5,491.70	-49.27	0.00	0.00	0.00	-341.15
273	1	273	27,095.13	232.18	0.00	0.00	0.00	2,813.57
		274	-27,408.88	-232.18	0.00	0.00	0.00	-2,468.83
	2	273	924.76	8.53	0.00	0.00	0.00	64.26
		274	-924.76	-8.53	0.00	0.00	0.00	-51.46
	3	273	5,491.68	49.25	0.00	0.00	0.00	341.15
		274	-5,491.68	-49.25	0.00	0.00	0.00	-267.32
274	1	274	27,408.77	275.71	0.00	0.00	0.00	2,468.84
		275	-27,722.52	-275.71	0.00	0.00	0.00	-2,057.79
	2	274	924.75	8.13	0.00	0.00	0.00	51.46
		275	-924.75	-8.13	0.00	0.00	0.00	-39.26
	3	274	5,491.69	45.44	0.00	0.00	0.00	267.32
		275	-5,491.69	-45.44	0.00	0.00	0.00	-199.19
275	1	275	27,722.58	282.85	0.00	0.00	0.00	2,057.80
		276	-28,036.33	-282.85	0.00	0.00	0.00	-1,635.20
	2	275	924.76	7.26	0.00	0.00	0.00	39.26
		276	-924.76	-7.26	0.00	0.00	0.00	-28.38
	3	275	5,491.67	39.52	0.00	0.00	0.00	199.19
		276	-5,491.67	-39.52	0.00	0.00	0.00	-139.92
276	1	276	28,036.39	266.23	0.00	0.00	0.00	1,635.20
		277	-28,350.13	-266.23	0.00	0.00	0.00	-1,236.82
	2	276	924.76	6.14	0.00	0.00	0.00	28.38
		277	-924.76	-6.14	0.00	0.00	0.00	-19.17
	3	276	5,491.70	32.70	0.00	0.00	0.00	139.92
		277	-5,491.70	-32.70	0.00	0.00	0.00	-90.88

# THE STUDY ON THE CONSTRUCTION OF THE BRIDGE OVER THE RIVER RUPSA IN KHULNA, PHASE - 2

Job No. :	Designed by :	Checked by :	Date :	January 24, 2000				
277	1	277	28,350.04	235.95	0.00	0.00	0.00	1,236.82
		278	-28,663.79	-235.95	0.00	0.00	0.00	-883.33
	2	277	924.76	4.96	0.00	0.00	0.00	19.17
		278	-924.76	-4.96	0.00	0.00	0.00	-11.72
	3	277	5,491.71	25.87	0.00	0.00	0.00	90.88
		278	-5,491.71	-25.87	0.00	0.00	0.00	-32.07
278	1	278	28,663.74	199.64	0.00	0.00	0.00	883.34
		279	-28,977.49	-199.64	0.00	0.00	0.00	-583.92
	2	278	924.76	3.85	0.00	0.00	0.00	11.72
		279	-924.76	-3.85	0.00	0.00	0.00	-5.95
	3	278	5,491.70	19.58	0.00	0.00	0.00	52.07
		279	-5,491.70	-19.58	0.00	0.00	0.00	-22.69
279	1	279	28,977.53	162.80	0.00	0.00	0.00	583.92
		280	-29,291.27	-162.80	0.00	0.00	0.00	-339.50
	2	279	924.76	2.86	0.00	0.00	0.00	5.95
		280	-924.76	-2.86	0.00	0.00	0.00	-1.63
	3	279	5,491.70	14.18	0.00	0.00	0.00	22.69
		280	-5,491.70	-14.18	0.00	0.00	0.00	-1.40
280	1	280	29,291.34	129.07	0.00	0.00	0.00	339.49
		281	-29,605.09	-129.07	0.00	0.00	0.00	-145.50
	2	280	924.76	2.03	0.00	0.00	0.00	1.65
		281	-924.76	-2.03	0.00	0.00	0.00	-1.42
	3	280	5,491.69	9.81	0.00	0.00	0.00	1.40
		281	-5,491.69	-9.81	0.00	0.00	0.00	-13.32
281	1	281	29,605.10	100.60	0.00	0.00	0.00	145.49
		282	-29,918.85	-100.60	0.00	0.00	0.00	5.86
	2	281	924.76	1.42	0.00	0.00	0.00	-1.42
		282	-924.76	-1.42	0.00	0.00	0.00	3.56
	3	281	5,491.69	6.48	0.00	0.00	0.00	-13.32
		282	-5,491.69	-6.48	0.00	0.00	0.00	23.05
282	1	282	29,918.75	70.91	0.00	0.00	0.00	-5.87
		283	-30,232.50	-70.91	0.00	0.00	0.00	112.70
	2	282	924.76	0.81	0.00	0.00	0.00	-3.56
		283	-924.76	-0.81	0.00	0.00	0.00	4.78
	3	282	5,491.70	3.33	0.00	0.00	0.00	-23.05
		283	-5,491.70	-3.33	0.00	0.00	0.00	28.06
283	1	283	30,232.63	49.48	0.00	0.00	0.00	-112.70
		284	-30,546.37	-49.48	0.00	0.00	0.00	187.34
	2	283	924.76	0.41	0.00	0.00	0.00	-4.78
		284	-924.76	-0.41	0.00	0.00	0.00	5.39
	3	283	5,491.70	1.29	0.00	0.00	0.00	-28.06
		284	-5,491.70	-1.29	0.00	0.00	0.00	30.01
284	1	284	30,546.30	7.64	0.00	0.00	0.00	-187.34
		285	-30,860.04	-7.64	0.00	0.00	0.00	199.15
	2	284	924.76	-0.30	0.00	0.00	0.00	-5.39
		285	-924.76	0.30	0.00	0.00	0.00	4.95
	3	284	5,491.69	-2.16	0.00	0.00	0.00	-30.01
		285	-5,491.69	2.16	0.00	0.00	0.00	26.78
285	1	285	30,860.01	-16.52	0.00	0.00	0.00	-199.15
		286	-31,278.34	16.52	0.00	0.00	0.00	166.43
	2	285	924.76	-0.63	0.00	0.00	0.00	-4.95
		286	-924.76	0.63	0.00	0.00	0.00	3.68
	3	285	5,491.69	-3.69	0.00	0.00	0.00	-26.78
		286	-5,491.69	3.69	0.00	0.00	0.00	19.40
286	1	286	31,278.39	-24.37	0.00	0.00	0.00	-166.43
		287	-31,696.73	24.37	0.00	0.00	0.00	117.87
	2	286	924.76	-0.66	0.00	0.00	0.00	-3.68
		287	-924.76	0.66	0.00	0.00	0.00	2.35
	3	286	5,491.69	-3.66	0.00	0.00	0.00	-19.40
		287	-5,491.69	3.66	0.00	0.00	0.00	12.09
287	1	287	31,696.72	-23.02	0.00	0.00	0.00	-117.87
		288	-32,115.05	23.02	0.00	0.00	0.00	71.91

## THE STUDY ON THE CONSTRUCTION OF THE BRIDGE OVER THE RIVER RUPSA IN KHULNA, PHASE - 2

Job No. :	Designed by :	Checked by :	Date :					
			January 24, 2000					
	2	287	924.76	-0.54	0.00	0.00	0.00	-2.35
		288	-924.76	0.54	0.00	0.00	0.00	1.27
	3	287	5,491.69	-2.89	0.00	0.00	0.00	-12.09
		288	-5,491.69	2.89	0.00	0.00	0.00	6.30
288	1	288	32,115.05	-17.60	0.00	0.00	0.00	-71.91
		289	-32,533.38	17.60	0.00	0.00	0.00	36.71
	2	288	924.76	-0.37	0.00	0.00	0.00	-1.27
		289	-924.76	0.37	0.00	0.00	0.00	0.53
	3	288	5,491.69	-1.94	0.00	0.00	0.00	-6.30
		289	-5,491.69	1.94	0.00	0.00	0.00	2.43
289	1	289	32,533.38	-11.86	0.00	0.00	0.00	-36.71
		290	-32,951.71	11.86	0.00	0.00	0.00	12.98
	2	289	924.76	-0.23	0.00	0.00	0.00	-0.53
		290	-924.76	0.23	0.00	0.00	0.00	0.08
	3	289	5,491.69	-1.15	0.00	0.00	0.00	-2.43
		290	-5,491.69	1.15	0.00	0.00	0.00	0.13
290	1	290	32,951.65	-6.85	0.00	0.00	0.00	-12.98
		291	-33,369.98	6.85	0.00	0.00	0.00	-0.74
	2	290	924.76	-0.11	0.00	0.00	0.00	-0.08
		291	-924.76	0.11	0.00	0.00	0.00	-0.15
	3	290	5,491.68	-0.56	0.00	0.00	0.00	-0.13
		291	-5,491.68	0.56	0.00	0.00	0.00	-0.98
291	1	291	33,370.07	-3.15	0.00	0.00	0.00	0.74
		292	-33,788.40	3.15	0.00	0.00	0.00	-7.08
	2	291	924.76	-0.04	0.00	0.00	0.00	0.15
		292	-924.76	0.04	0.00	0.00	0.00	-0.23
	3	291	5,491.69	-0.17	0.00	0.00	0.00	0.98
		292	-5,491.69	0.17	0.00	0.00	0.00	-1.32
292	1	292	33,788.35	-0.80	0.00	0.00	0.00	7.08
		293	-34,206.68	0.80	0.00	0.00	0.00	-8.71
	2	292	924.76	0.00	0.00	0.00	0.00	0.23
		293	-924.76	0.00	0.00	0.00	0.00	-0.22
	3	292	5,491.69	0.05	0.00	0.00	0.00	1.32
		293	-5,491.69	-0.05	0.00	0.00	0.00	-1.22
293	1	293	34,206.67	0.47	0.00	0.00	0.00	8.71
		294	-34,625.00	-0.47	0.00	0.00	0.00	-7.79
	2	293	924.76	0.02	0.00	0.00	0.00	0.22
		294	-924.76	-0.02	0.00	0.00	0.00	-0.18
	3	293	5,491.70	0.14	0.00	0.00	0.00	1.22
		294	-5,491.70	-0.14	0.00	0.00	0.00	-0.94
294	1	294	34,625.03	0.98	0.00	0.00	0.00	7.79
		295	-35,043.36	-0.98	0.00	0.00	0.00	-5.85
	2	294	924.76	0.03	0.00	0.00	0.00	0.18
		295	-924.76	-0.03	0.00	0.00	0.00	-0.12
	3	294	5,491.69	0.16	0.00	0.00	0.00	0.94
		295	-5,491.69	-0.16	0.00	0.00	0.00	-0.62
295	1	295	35,043.36	1.03	0.00	0.00	0.00	5.85
		296	-35,461.69	-1.03	0.00	0.00	0.00	-3.80
	2	295	924.76	0.02	0.00	0.00	0.00	0.12
		296	-924.76	-0.02	0.00	0.00	0.00	-0.07
	3	295	5,491.69	0.13	0.00	0.00	0.00	0.62
		296	-5,491.69	-0.13	0.00	0.00	0.00	-0.35
296	1	296	35,461.69	0.85	0.00	0.00	0.00	3.80
		297	-35,880.02	-0.85	0.00	0.00	0.00	-2.10
	2	296	924.76	0.02	0.00	0.00	0.00	0.07
		297	-924.76	-0.02	0.00	0.00	0.00	-0.03
	3	296	5,491.69	0.10	0.00	0.00	0.00	0.35
		297	-5,491.69	-0.10	0.00	0.00	0.00	-0.16
297	1	297	35,880.03	0.61	0.00	0.00	0.00	2.10
		298	-36,298.37	-0.61	0.00	0.00	0.00	-0.88
	2	297	924.76	0.01	0.00	0.00	0.00	0.03
		298	-924.76	-0.01	0.00	0.00	0.00	-0.01
	3	297	5,491.69	0.06	0.00	0.00	0.00	0.16
		298	-5,491.69	-0.06	0.00	0.00	0.00	-0.04

## THE STUDY ON THE CONSTRUCTION OF THE BRIDGE OVER THE RIVER RUPSA IN KHULNA, PHASE - 2

Job No. :	Designed by :	Checked by :	Date :					
298	1	298	36,298.33	0.37	0.00	0.00	0.00	0.88
		299	-36,716.66	-0.37	0.00	0.00	0.00	-0.14
	2	298	924.76	0.01	0.00	0.00	0.00	0.01
		299	-924.76	-0.01	0.00	0.00	0.00	0.00
	3	298	5,491.69	0.03	0.00	0.00	0.00	0.04
		299	-5,491.69	-0.03	0.00	0.00	0.00	0.03
299	1	299	36,716.69	0.19	0.00	0.00	0.00	0.14
		300	-37,135.02	-0.19	0.00	0.00	0.00	0.24
	2	299	924.76	0.00	0.00	0.00	0.00	0.00
		300	-924.76	0.00	0.00	0.00	0.00	0.01
	3	299	5,491.69	0.01	0.00	0.00	0.00	-0.03
		300	-5,491.69	-0.01	0.00	0.00	0.00	0.05
300	1	300	37,135.05	0.07	0.00	0.00	0.00	-0.24
		301	-37,553.38	-0.07	0.00	0.00	0.00	0.37
	2	300	924.76	0.00	0.00	0.00	0.00	-0.01
		301	-924.76	0.00	0.00	0.00	0.00	0.01
	3	300	5,491.69	0.00	0.00	0.00	0.00	-0.05
		301	-5,491.69	0.00	0.00	0.00	0.00	0.06
301	1	301	37,553.39	0.00	0.00	0.00	0.00	-0.37
		302	-37,971.72	0.00	0.00	0.00	0.00	0.37
	2	301	924.76	0.00	0.00	0.00	0.00	-0.01
		302	-924.76	0.00	0.00	0.00	0.00	0.01
	3	301	5,491.69	-0.01	0.00	0.00	0.00	-0.06
		302	-5,491.69	0.01	0.00	0.00	0.00	0.05
302	1	302	37,971.70	-0.04	0.00	0.00	0.00	-0.37
		303	-38,390.04	0.04	0.00	0.00	0.00	0.29
	2	302	924.76	0.00	0.00	0.00	0.00	-0.01
		303	-924.76	0.00	0.00	0.00	0.00	0.01
	3	302	5,491.69	-0.01	0.00	0.00	0.00	-0.05
		303	-5,491.69	0.01	0.00	0.00	0.00	0.03
303	1	303	38,390.04	-0.05	0.00	0.00	0.00	-0.29
		304	-38,808.37	0.05	0.00	0.00	0.00	0.20
	2	303	924.76	0.00	0.00	0.00	0.00	-0.01
		304	-924.76	0.00	0.00	0.00	0.00	0.00
	3	303	5,491.69	-0.01	0.00	0.00	0.00	-0.03
		304	-5,491.69	0.01	0.00	0.00	0.00	0.02
304	1	304	38,808.36	-0.04	0.00	0.00	0.00	-0.20
		305	-39,226.69	0.04	0.00	0.00	0.00	0.12
	2	304	924.76	0.00	0.00	0.00	0.00	0.00
		305	-924.76	0.00	0.00	0.00	0.00	0.00
	3	304	5,491.69	-0.01	0.00	0.00	0.00	-0.02
		305	-5,491.69	0.01	0.00	0.00	0.00	0.01
305	1	305	39,226.70	-0.03	0.00	0.00	0.00	-0.12
		306	-39,645.04	0.03	0.00	0.00	0.00	0.05
	2	305	924.76	0.00	0.00	0.00	0.00	0.00
		306	-924.76	0.00	0.00	0.00	0.00	0.00
	3	305	5,491.69	0.00	0.00	0.00	0.00	-0.01
		306	-5,491.69	0.00	0.00	0.00	0.00	0.00
306	1	306	39,645.04	-0.03	0.00	0.00	0.00	-0.05
		307	-40,063.37	0.03	0.00	0.00	0.00	0.00
	2	306	924.76	0.00	0.00	0.00	0.00	0.00
		307	-924.76	0.00	0.00	0.00	0.00	0.00
	3	306	5,491.69	0.00	0.00	0.00	0.00	0.00
		307	-5,491.69	0.00	0.00	0.00	0.00	0.00
307	1	307	40,063.37	-0.02	0.00	0.00	0.00	0.00
		308	-40,481.70	0.02	0.00	0.00	0.00	-0.05
	2	307	924.76	0.00	0.00	0.00	0.00	0.00
		308	-924.76	0.00	0.00	0.00	0.00	0.00
	3	307	5,491.69	0.00	0.00	0.00	0.00	0.00
		308	-5,491.69	0.00	0.00	0.00	0.00	-0.01
308	1	308	40,481.70	-0.02	0.00	0.00	0.00	0.05
		309	-40,795.45	0.02	0.00	0.00	0.00	-0.09

## THE STUDY ON THE CONSTRUCTION OF THE BRIDGE OVER THE RIVER RUPSA IN KHULNA, PHASE - 2

Job No. :	Designed by :	Checked by :	Date :	January 24, 2000					
	2	308	924.76	0.00	0.00	0.00	0.00	0.00	
		309	-924.76	0.00	0.00	0.00	0.00	0.00	
	3	308	5,491.69	0.00	0.00	0.00	0.00	0.01	
		309	-5,491.69	0.00	0.00	0.00	0.00	-0.01	
309	1	242	19,656.73	644.31	0.00	0.00	0.00	15,263.20	
		310	-19,970.47	-644.31	0.00	0.00	0.00	-14,322.92	
	2	242	-612.64	5.34	0.00	0.00	0.00	221.94	
		310	612.64	-5.34	0.00	0.00	0.00	-213.91	
	3	242	-4,479.68	16.90	0.00	0.00	0.00	1,027.50	
		310	4,479.68	-16.90	0.00	0.00	0.00	-1,000.78	
310	1	310	19,970.64	644.32	0.00	0.00	0.00	14,322.90	
		311	-21,853.13	-644.32	0.00	0.00	0.00	-8,599.96	
	2	310	-612.64	5.35	0.00	0.00	0.00	213.90	
		311	612.64	-5.35	0.00	0.00	0.00	-165.62	
	3	310	-4,479.68	16.99	0.00	0.00	0.00	1,000.80	
		311	4,479.68	-16.99	0.00	0.00	0.00	-842.49	
311	1	311	21,853.10	644.32	0.00	0.00	0.00	8,599.97	
		312	-24,990.59	-644.32	0.00	0.00	0.00	1,124.74	
	2	311	-612.64	5.35	0.00	0.00	0.00	165.62	
		312	612.64	-5.35	0.00	0.00	0.00	-85.29	
	3	311	-4,479.68	16.99	0.00	0.00	0.00	842.48	
		312	4,479.68	-16.99	0.00	0.00	0.00	-583.15	
312	1	312	24,990.73	538.65	0.00	0.00	0.00	-1,124.72	
		314	-25,304.48	-538.65	0.00	0.00	0.00	1,943.37	
	2	312	-612.64	5.88	0.00	0.00	0.00	85.29	
		314	612.64	-5.88	0.00	0.00	0.00	-76.46	
	3	312	-4,479.69	23.30	0.00	0.00	0.00	583.15	
		314	4,479.69	-23.30	0.00	0.00	0.00	-548.01	
313	1	314	25,304.24	364.52	0.00	0.00	0.00	-1,943.33	
		315	-25,617.99	-364.52	0.00	0.00	0.00	2,500.25	
	2	314	-612.64	6.51	0.00	0.00	0.00	76.46	
		315	612.64	-6.51	0.00	0.00	0.00	-66.70	
	3	314	-4,479.66	32.09	0.00	0.00	0.00	548.01	
		315	4,479.66	-32.09	0.00	0.00	0.00	-499.72	
314	1	315	25,618.29	225.52	0.00	0.00	0.00	-2,500.25	
		316	-25,932.04	-225.52	0.00	0.00	0.00	2,847.71	
	2	315	-612.64	6.81	0.00	0.00	0.00	66.70	
		316	612.64	-6.81	0.00	0.00	0.00	-56.49	
	3	315	-4,479.70	37.80	0.00	0.00	0.00	499.72	
		316	4,479.70	-37.80	0.00	0.00	0.00	-442.90	
315	1	316	25,932.12	118.14	0.00	0.00	0.00	-2,847.75	
		317	-26,245.86	-118.14	0.00	0.00	0.00	3,053.14	
	2	316	-612.64	6.87	0.00	0.00	0.00	56.49	
		317	612.64	-6.87	0.00	0.00	0.00	-46.18	
	3	316	-4,479.66	41.10	0.00	0.00	0.00	442.90	
		317	4,479.66	-41.10	0.00	0.00	0.00	-381.16	
316	1	317	26,245.62	38.64	0.00	0.00	0.00	-3,053.13	
		318	-26,559.37	-38.64	0.00	0.00	0.00	3,098.15	
	2	317	-612.65	6.76	0.00	0.00	0.00	46.18	
		318	612.65	-6.76	0.00	0.00	0.00	-36.04	
	3	317	-4,479.68	42.60	0.00	0.00	0.00	381.16	
		318	4,479.68	-42.60	0.00	0.00	0.00	-317.19	
317	1	318	26,559.19	-33.47	0.00	0.00	0.00	-3,098.08	
		319	-26,872.94	33.47	0.00	0.00	0.00	3,053.71	
	2	318	-612.64	6.51	0.00	0.00	0.00	36.04	
		319	612.64	-6.51	0.00	0.00	0.00	-26.28	
	3	318	-4,479.67	42.89	0.00	0.00	0.00	317.19	
		319	4,479.67	-42.89	0.00	0.00	0.00	-252.82	
318	1	319	26,872.96	-159.80	0.00	0.00	0.00	-3,053.71	
		320	-27,186.71	159.80	0.00	0.00	0.00	2,818.68	
	2	319	-612.64	5.64	0.00	0.00	0.00	26.28	
		320	612.64	-5.64	0.00	0.00	0.00	-17.82	
	3	319	-4,479.71	40.74	0.00	0.00	0.00	252.82	
		320	4,479.71	-40.74	0.00	0.00	0.00	-191.68	



## THE STUDY ON THE CONSTRUCTION OF THE BRIDGE OVER THE RIVER RUPSA IN KHULNA, PHASE - 2

Job No. :	Designed by :	Checked by :	Date :	January 24, 2000				
319	1	320	27,186.89	-233.02	0.00	0.00	0.00	-2,818.71
		321	-27,500.63	233.02	0.00	0.00	0.00	2,472.73
	2	320	-612.65	4.73	0.00	0.00	0.00	17.82
		321	612.65	-4.73	0.00	0.00	0.00	-10.72
	3	320	-4,479.67	36.86	0.00	0.00	0.00	191.69
		321	4,479.67	-36.86	0.00	0.00	0.00	-136.38
320	1	321	27,500.68	-276.45	0.00	0.00	0.00	-2,472.74
		322	-27,814.43	276.45	0.00	0.00	0.00	2,060.60
	2	321	-612.64	3.61	0.00	0.00	0.00	10.72
		322	612.64	-3.61	0.00	0.00	0.00	-5.31
	3	321	-4,479.69	30.79	0.00	0.00	0.00	136.38
		322	4,479.69	-30.79	0.00	0.00	0.00	-90.19
321	1	322	27,814.31	-283.47	0.00	0.00	0.00	-2,060.60
		323	-28,128.06	283.47	0.00	0.00	0.00	1,637.07
	2	322	-612.64	2.61	0.00	0.00	0.00	5.31
		323	612.64	-2.61	0.00	0.00	0.00	-1.40
	3	322	-4,479.69	24.51	0.00	0.00	0.00	90.19
		323	4,479.69	-24.51	0.00	0.00	0.00	-53.43
322	1	323	28,128.10	-266.73	0.00	0.00	0.00	-1,637.08
		324	-28,441.84	266.73	0.00	0.00	0.00	1,237.96
	2	323	-612.64	1.76	0.00	0.00	0.00	1.40
		324	612.64	-1.76	0.00	0.00	0.00	1.24
	3	323	-4,479.70	18.60	0.00	0.00	0.00	53.44
		324	4,479.70	-18.60	0.00	0.00	0.00	-25.55
323	1	324	28,441.94	-236.33	0.00	0.00	0.00	-1,237.96
		325	-28,755.69	236.33	0.00	0.00	0.00	885.90
	2	324	-612.64	1.08	0.00	0.00	0.00	-1.24
		325	612.64	-1.08	0.00	0.00	0.00	2.86
	3	324	-4,479.70	13.38	0.00	0.00	0.00	25.55
		325	4,479.70	-13.38	0.00	0.00	0.00	-5.49
324	1	325	28,755.66	-199.92	0.00	0.00	0.00	-885.91
		326	-29,069.41	199.92	0.00	0.00	0.00	584.07
	2	325	-612.64	0.56	0.00	0.00	0.00	-2.86
		326	612.64	-0.56	0.00	0.00	0.00	3.70
	3	325	-4,479.69	9.03	0.00	0.00	0.00	5.49
		326	4,479.69	-9.03	0.00	0.00	0.00	8.03
325	1	326	29,069.36	-162.99	0.00	0.00	0.00	-584.07
		327	-29,383.11	162.99	0.00	0.00	0.00	339.35
	2	326	-612.64	0.18	0.00	0.00	0.00	-3.70
		327	612.64	-0.18	0.00	0.00	0.00	3.96
	3	326	-4,479.68	5.58	0.00	0.00	0.00	-8.03
		327	4,479.68	-5.58	0.00	0.00	0.00	16.39
326	1	327	29,383.34	-129.20	0.00	0.00	0.00	-339.35
		328	-29,697.08	129.20	0.00	0.00	0.00	145.17
	2	327	-612.64	-0.08	0.00	0.00	0.00	-3.96
		328	612.64	0.08	0.00	0.00	0.00	3.84
	3	327	-4,479.68	2.99	0.00	0.00	0.00	-16.39
		328	4,479.68	-2.99	0.00	0.00	0.00	20.88
327	1	328	29,696.88	-100.68	0.00	0.00	0.00	-145.17
		329	-30,010.62	100.68	0.00	0.00	0.00	-6.31
	2	328	-612.64	-0.24	0.00	0.00	0.00	-3.84
		329	612.64	0.24	0.00	0.00	0.00	3.48
	3	328	-4,479.70	1.17	0.00	0.00	0.00	-20.88
		329	4,479.70	-1.17	0.00	0.00	0.00	22.63
328	1	329	30,010.77	-70.93	0.00	0.00	0.00	6.31
		330	-30,324.52	70.93	0.00	0.00	0.00	-113.18
	2	329	-612.64	-0.36	0.00	0.00	0.00	-3.48
		330	612.64	0.36	0.00	0.00	0.00	2.94
	3	329	-4,479.70	-0.40	0.00	0.00	0.00	-22.63
		330	4,479.70	0.40	0.00	0.00	0.00	22.02
329	1	330	30,324.43	-49.48	0.00	0.00	0.00	113.18
		331	-30,638.18	49.48	0.00	0.00	0.00	-187.82

## THE STUDY ON THE CONSTRUCTION OF THE BRIDGE OVER THE RIVER RUPSA IN KHULNA, PHASE - 2

Job No. :	Designed by :	Checked by :	Date :	January 24, 2000				
	2	330	-612.64	-0.41	0.00	0.00	0.00	-2.94
		331	612.64	0.41	0.00	0.00	0.00	2.32
	3	330	-4,479.68	-1.31	0.00	0.00	0.00	-22.02
		331	4,479.68	1.31	0.00	0.00	0.00	20.05
330	1	331	30,638.09	-7.59	0.00	0.00	0.00	187.83
		313	-30,951.83	7.59	0.00	0.00	0.00	-199.56
	2	331	-612.64	-0.43	0.00	0.00	0.00	-2.32
		313	612.64	0.43	0.00	0.00	0.00	1.68
	3	331	-4,479.68	-2.55	0.00	0.00	0.00	-20.05
		313	4,479.68	2.55	0.00	0.00	0.00	16.22
331	1	313	30,951.80	16.58	0.00	0.00	0.00	199.56
		333	-31,370.14	-16.58	0.00	0.00	0.00	-166.72
	2	313	-612.64	-0.37	0.00	0.00	0.00	-1.68
		333	612.64	0.37	0.00	0.00	0.00	0.94
	3	313	-4,479.68	-2.81	0.00	0.00	0.00	-16.22
		333	4,479.68	2.81	0.00	0.00	0.00	10.59
332	1	333	31,370.16	24.43	0.00	0.00	0.00	166.72
		334	-31,788.49	-24.43	0.00	0.00	0.00	-118.04
	2	333	-612.64	-0.26	0.00	0.00	0.00	-0.94
		334	612.64	0.26	0.00	0.00	0.00	0.41
	3	333	-4,479.67	-2.57	0.00	0.00	0.00	-10.59
		334	4,479.67	2.57	0.00	0.00	0.00	5.86
333	1	334	31,788.52	23.07	0.00	0.00	0.00	118.04
		335	-32,206.83	-23.07	0.00	0.00	0.00	-71.99
	2	334	-612.64	-0.16	0.00	0.00	0.00	-0.41
		335	612.64	0.16	0.00	0.00	0.00	0.09
	3	334	-4,479.69	-1.68	0.00	0.00	0.00	-5.86
		335	4,479.69	1.68	0.00	0.00	0.00	2.51
334	1	335	32,206.82	17.63	0.00	0.00	0.00	71.99
		336	-32,625.15	-17.63	0.00	0.00	0.00	-36.74
	2	335	-612.64	-0.08	0.00	0.00	0.00	-0.09
		336	612.64	0.08	0.00	0.00	0.00	-0.08
	3	335	-4,479.69	-1.01	0.00	0.00	0.00	-2.51
		336	4,479.69	1.01	0.00	0.00	0.00	0.50
335	1	336	32,625.19	11.87	0.00	0.00	0.00	36.74
		337	-33,043.52	-11.87	0.00	0.00	0.00	-12.98
	2	336	-612.64	-0.03	0.00	0.00	0.00	0.08
		337	612.64	0.03	0.00	0.00	0.00	-0.14
	3	336	-4,479.69	-0.52	0.00	0.00	0.00	-0.50
		337	4,479.69	0.52	0.00	0.00	0.00	-0.55
336	1	337	33,043.50	6.85	0.00	0.00	0.00	12.98
		338	-33,461.83	-6.85	0.00	0.00	0.00	0.76
	2	337	-612.64	0.00	0.00	0.00	0.00	0.14
		338	612.64	0.00	0.00	0.00	0.00	-0.14
	3	337	-4,479.69	-0.19	0.00	0.00	0.00	0.55
		338	4,479.69	0.19	0.00	0.00	0.00	-0.94
337	1	338	33,461.81	3.16	0.00	0.00	0.00	-0.76
		339	-33,880.14	-3.16	0.00	0.00	0.00	7.10
	2	338	-612.64	0.01	0.00	0.00	0.00	0.14
		339	612.64	-0.01	0.00	0.00	0.00	-0.12
	3	338	-4,479.68	0.00	0.00	0.00	0.00	0.94
		339	4,479.68	0.00	0.00	0.00	0.00	-0.94
338	1	339	33,880.20	0.80	0.00	0.00	0.00	-7.10
		340	-34,298.53	-0.80	0.00	0.00	0.00	8.73
	2	339	-612.64	0.02	0.00	0.00	0.00	0.12
		340	612.64	-0.02	0.00	0.00	0.00	-0.08
	3	339	-4,479.69	0.09	0.00	0.00	0.00	0.94
		340	4,479.69	-0.09	0.00	0.00	0.00	-0.76
339	1	340	34,298.52	-0.47	0.00	0.00	0.00	-8.73
		341	-34,716.85	0.47	0.00	0.00	0.00	7.80
	2	340	-612.64	0.02	0.00	0.00	0.00	0.08
		341	612.64	-0.02	0.00	0.00	0.00	-0.05
	3	340	-4,479.68	0.12	0.00	0.00	0.00	0.76
		341	4,479.68	-0.12	0.00	0.00	0.00	-0.53

## THE STUDY ON THE CONSTRUCTION OF THE BRIDGE OVER THE RIVER RUPSA IN KHULNA, PHASE - 2

Job No. :	Designed by :	Checked by :	Date :					
340	1	341	34,716.81	-0.98	0.00	0.00	0.00	-7.80
		342	-35,135.14	0.98	0.00	0.00	0.00	5.86
	2	341	-612.64	0.01	0.00	0.00	0.00	0.05
		342	612.64	-0.01	0.00	0.00	0.00	-0.02
	3	341	-4,479.68	0.11	0.00	0.00	0.00	0.53
		342	4,479.68	-0.11	0.00	0.00	0.00	-0.31
341	1	342	35,135.18	-1.03	0.00	0.00	0.00	-5.86
		343	-35,553.51	1.03	0.00	0.00	0.00	3.80
	2	342	-612.64	0.01	0.00	0.00	0.00	0.02
		343	612.64	-0.01	0.00	0.00	0.00	-0.01
	3	342	-4,479.68	0.08	0.00	0.00	0.00	0.31
		343	4,479.68	-0.08	0.00	0.00	0.00	-0.15
342	1	343	35,553.48	-0.85	0.00	0.00	0.00	-3.80
		344	-35,971.81	0.85	0.00	0.00	0.00	2.10
	2	343	-612.64	0.00	0.00	0.00	0.00	0.01
		344	612.64	0.00	0.00	0.00	0.00	0.00
	3	343	-4,479.68	0.05	0.00	0.00	0.00	0.15
		344	4,479.68	-0.05	0.00	0.00	0.00	-0.05
343	1	344	35,971.82	-0.61	0.00	0.00	0.00	-2.10
		345	-36,390.15	0.61	0.00	0.00	0.00	0.88
	2	344	-612.64	0.00	0.00	0.00	0.00	0.00
		345	612.64	0.00	0.00	0.00	0.00	0.01
	3	344	-4,479.68	0.03	0.00	0.00	0.00	0.05
		345	4,479.68	-0.03	0.00	0.00	0.00	0.01
344	1	345	36,390.16	-0.37	0.00	0.00	0.00	-0.88
		346	-36,808.49	0.37	0.00	0.00	0.00	0.14
	2	345	-612.64	0.00	0.00	0.00	0.00	-0.01
		346	612.64	0.00	0.00	0.00	0.00	0.01
	3	345	-4,479.68	0.01	0.00	0.00	0.00	-0.01
		346	4,479.68	-0.01	0.00	0.00	0.00	0.04
345	1	346	36,808.48	-0.19	0.00	0.00	0.00	-0.14
		347	-37,226.81	0.19	0.00	0.00	0.00	-0.24
	2	346	-612.64	0.00	0.00	0.00	0.00	-0.01
		347	612.64	0.00	0.00	0.00	0.00	0.01
	3	346	-4,479.68	0.00	0.00	0.00	0.00	-0.04
		347	4,479.68	0.00	0.00	0.00	0.00	0.04
346	1	347	37,226.84	-0.07	0.00	0.00	0.00	0.24
		348	-37,645.17	0.07	0.00	0.00	0.00	-0.37
	2	347	-612.64	0.00	0.00	0.00	0.00	-0.01
		348	612.64	0.00	0.00	0.00	0.00	0.00
	3	347	-4,479.68	0.00	0.00	0.00	0.00	-0.04
		348	4,479.68	0.00	0.00	0.00	0.00	0.04
347	1	348	37,645.15	0.00	0.00	0.00	0.00	0.37
		349	-38,063.48	0.00	0.00	0.00	0.00	-0.37
	2	348	-612.64	0.00	0.00	0.00	0.00	0.00
		349	612.64	0.00	0.00	0.00	0.00	0.00
	3	348	-4,479.68	0.00	0.00	0.00	0.00	-0.04
		349	4,479.68	0.00	0.00	0.00	0.00	0.03
348	1	349	38,063.48	0.04	0.00	0.00	0.00	0.37
		350	-38,481.81	-0.04	0.00	0.00	0.00	-0.30
	2	349	-612.64	0.00	0.00	0.00	0.00	0.00
		350	612.64	0.00	0.00	0.00	0.00	0.00
	3	349	-4,479.68	0.00	0.00	0.00	0.00	-0.03
		350	4,479.68	0.00	0.00	0.00	0.00	0.02
349	1	350	38,481.81	0.05	0.00	0.00	0.00	0.30
		351	-38,900.15	-0.05	0.00	0.00	0.00	-0.20
	2	350	-612.64	0.00	0.00	0.00	0.00	0.00
		351	612.64	0.00	0.00	0.00	0.00	0.00
	3	350	-4,479.69	0.00	0.00	0.00	0.00	-0.02
		351	4,479.69	0.00	0.00	0.00	0.00	0.01
350	1	351	38,900.14	0.04	0.00	0.00	0.00	0.20
		352	-39,318.47	-0.04	0.00	0.00	0.00	-0.12

## THE STUDY ON THE CONSTRUCTION OF THE BRIDGE OVER THE RIVER RUPSA IN KHULNA, PHASE - 2

Job No. :	Designed by :	Checked by :	Date :	January 24, 2000				
	2	351	-612.64	0.00	0.00	0.00	0.00	0.00
		352	612.64	0.00	0.00	0.00	0.00	0.00
	3	351	-4,479.68	0.00	0.00	0.00	0.00	-0.01
		352	4,479.68	0.00	0.00	0.00	0.00	0.00
351	1	352	39,318.48	0.03	0.00	0.00	0.00	0.12
		353	-39,736.81	-0.03	0.00	0.00	0.00	-0.05
	2	352	-612.64	0.00	0.00	0.00	0.00	0.00
		353	612.64	0.00	0.00	0.00	0.00	0.00
	3	352	-4,479.68	0.00	0.00	0.00	0.00	0.00
		353	4,479.68	0.00	0.00	0.00	0.00	0.00
352	1	353	39,736.82	0.03	0.00	0.00	0.00	0.05
		354	-40,155.15	-0.03	0.00	0.00	0.00	0.00
	2	353	-612.64	0.00	0.00	0.00	0.00	0.00
		354	612.64	0.00	0.00	0.00	0.00	0.00
	3	353	-4,479.68	0.00	0.00	0.00	0.00	0.00
		354	4,479.68	0.00	0.00	0.00	0.00	0.00
353	1	354	40,155.15	0.02	0.00	0.00	0.00	0.00
		352	-40,573.48	-0.02	0.00	0.00	0.00	0.05
	2	354	-612.64	0.00	0.00	0.00	0.00	0.00
		352	612.64	0.00	0.00	0.00	0.00	0.00
	3	354	-4,479.68	0.00	0.00	0.00	0.00	0.00
		352	4,479.68	0.00	0.00	0.00	0.00	0.00
354	1	352	40,573.48	0.02	0.00	0.00	0.00	-0.05
		355	-40,887.23	-0.02	0.00	0.00	0.00	0.09
	2	352	-612.64	0.00	0.00	0.00	0.00	0.00
		355	612.64	0.00	0.00	0.00	0.00	0.00
	3	352	-4,479.68	0.00	0.00	0.00	0.00	0.00
		355	4,479.68	0.00	0.00	0.00	0.00	-0.01