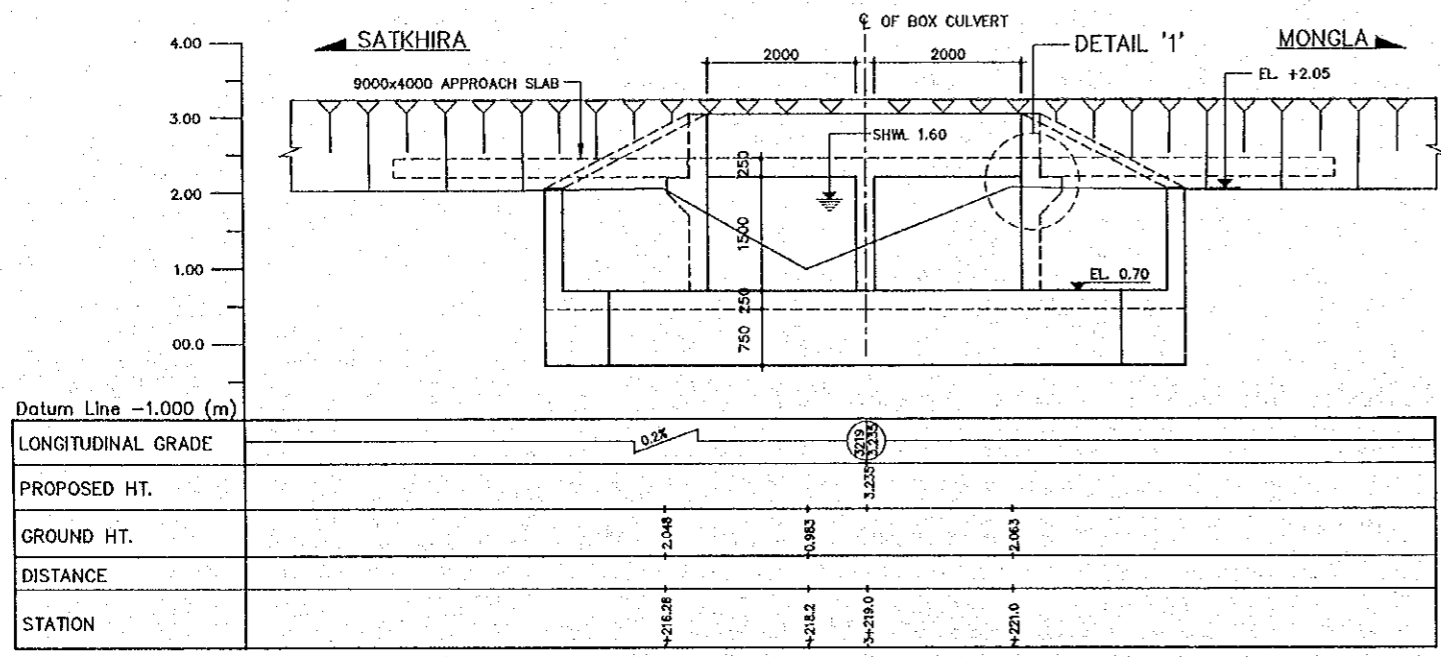


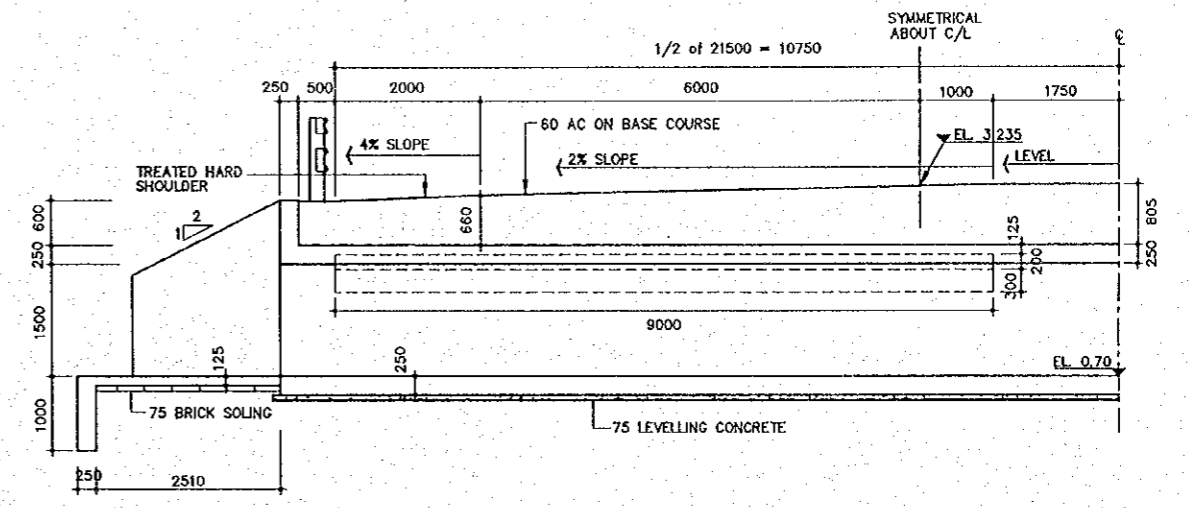
M. BOX CULVERT

THE STUDY ON CONSTRUCTION OF THE BRIDGE
OVER THE RIVER RUPSA IN KHULNA (PHASE 2)
GENERAL ARRANGEMENT OF BOX CULVERT
Alutala Khal (STA. 3+219)

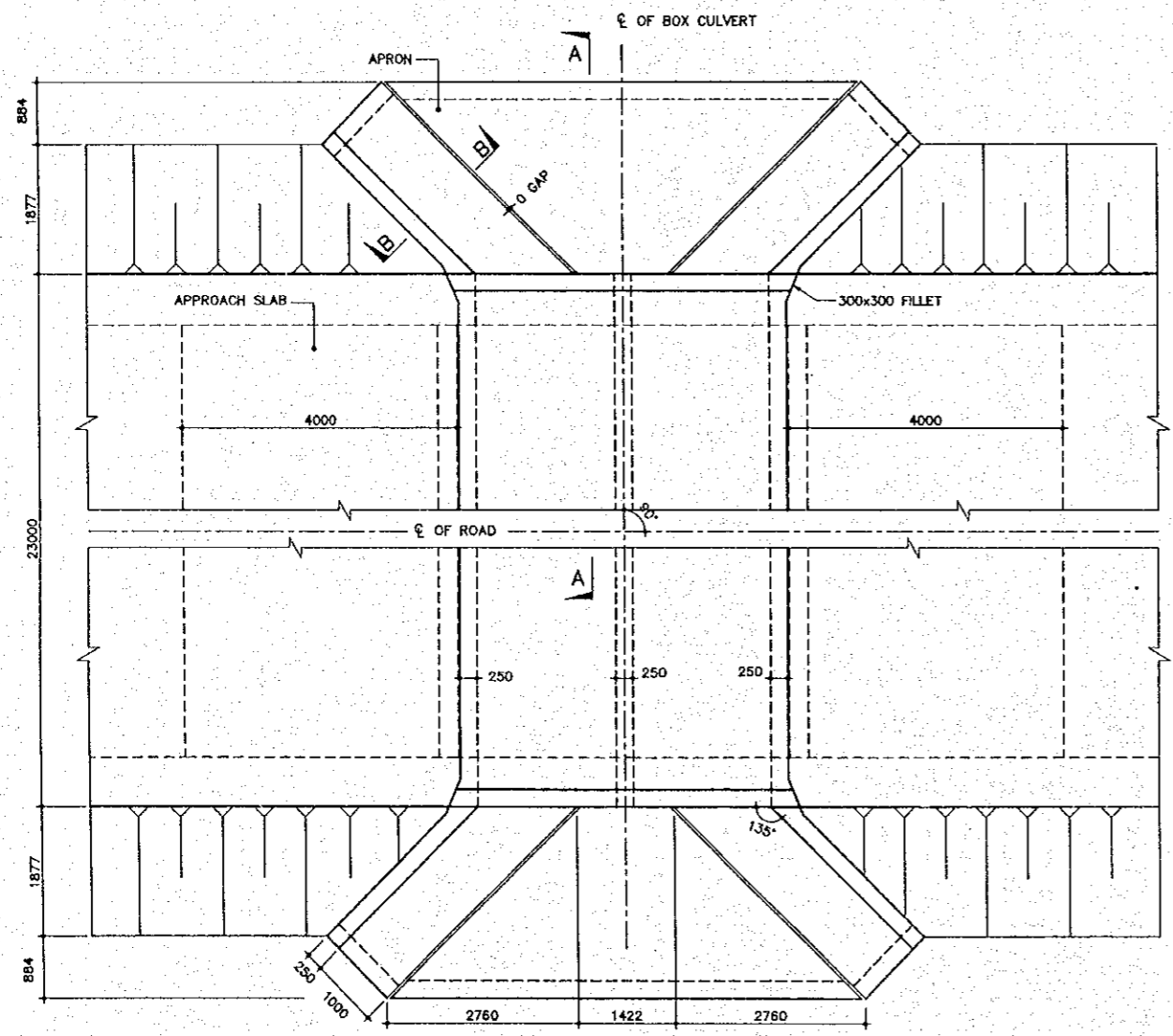
SCALE AS SHOWN
SHEET NO. M-01



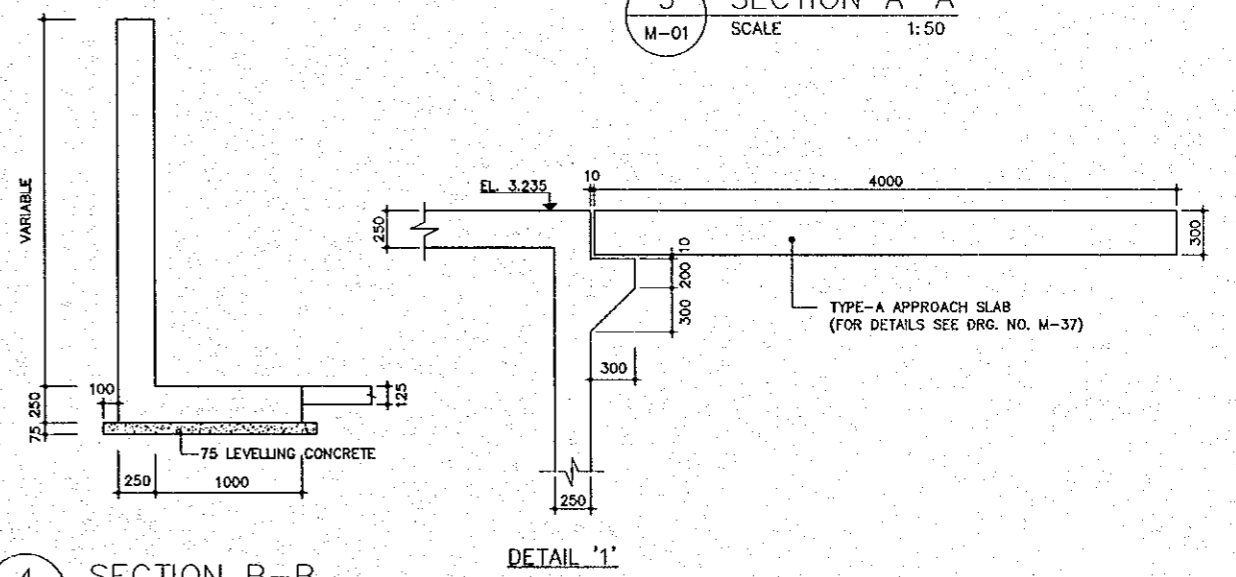
2 GENERAL ELEVATION AT C/L
M-01 SCALE 1:50



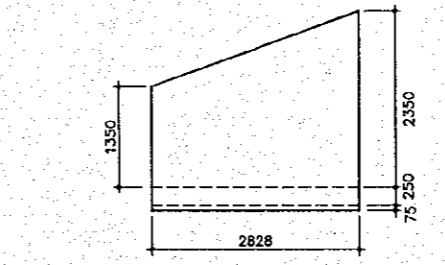
3 SECTION A-A
M-01 SCALE 1:50



1 PART PLAN
M-01 SCALE 1:50



4 SECTION B-B
M-01 SCALE 1:25



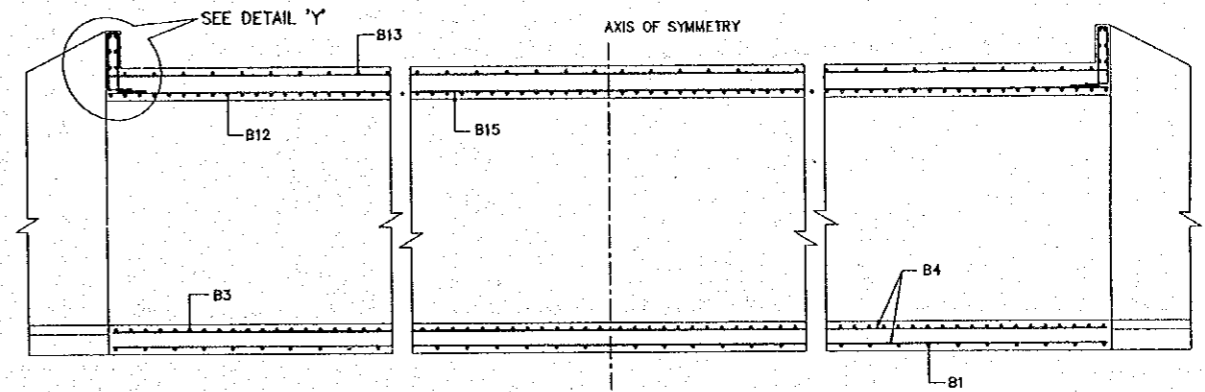
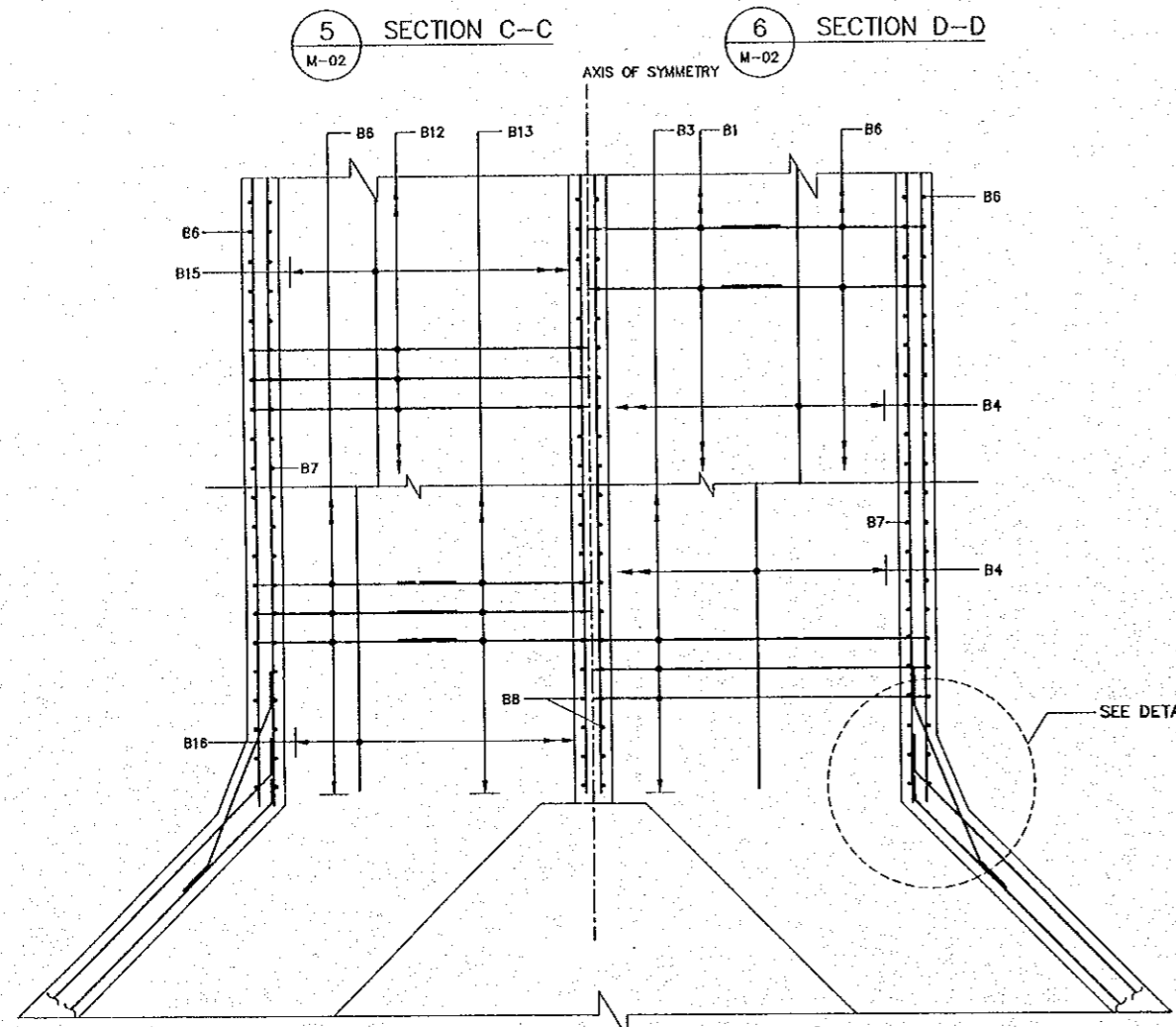
5 ELEVATION OF WING WALL AT WATER SIDE
M-01 SCALE 1:50

- NOTES:
1. ALL DIMENSIONS ARE IN MILLIMETER UNLESS OTHERWISE SPECIFIED.
 2. THIS DRAWING TO BE READ IN CONJUNCTION WITH DRG. NO. M-02, M-03, M-04 & M-37.
 3. ALL ELEVATIONS ARE IN P.W.D., meter.
 4. PROVISION SHOULD BE KEPT OVER DECK FOR PLACEMENT OF GUARD RAIL.

THE STUDY ON CONSTRUCTION OF THE BRIDGE
OVER THE RIVER RUPSA IN KHULNA (PHASE 2)

REINFORCEMENT DETAILS OF BOX
Alatala Khal (STA. 3+219)

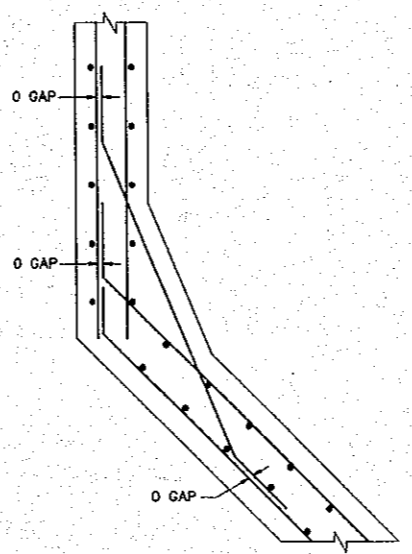
SCALE	SHEET NO.
AS SHOWN	M-02



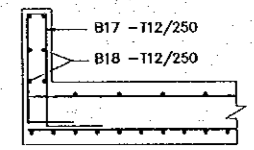
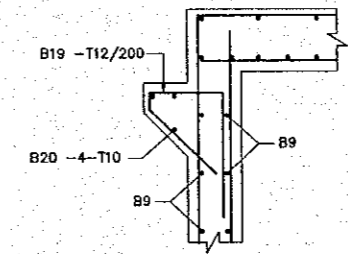
3 SECTION A-A
M-02

4 SECTION B-B
M-02

1 PART PLAN & SECTION
E-02 SCALE : 1:25

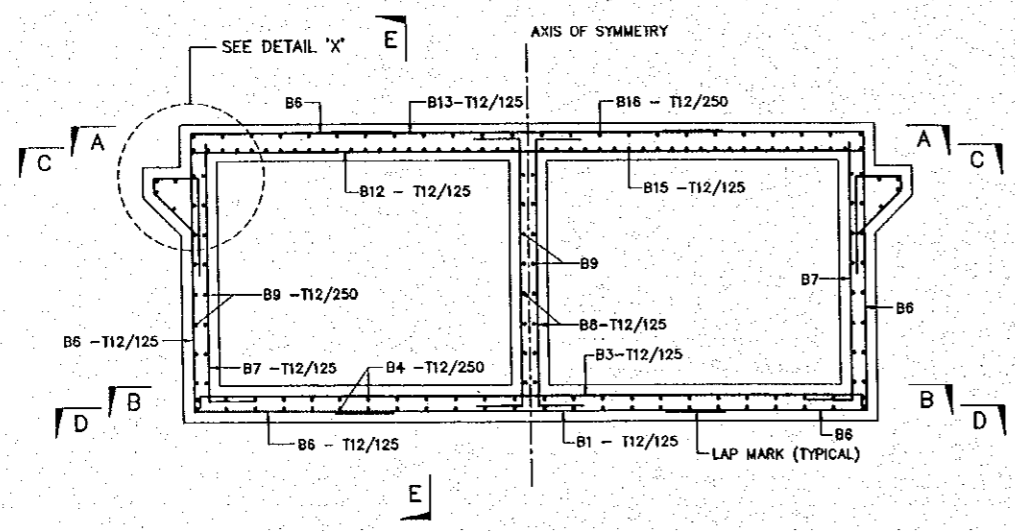


7 SECTION E-E
M-02 SCALE : 1:50



8 DETAIL X
M-02 SCALE : NOT TO SCALE

9 DETAIL Y
M-02 SCALE : NOT TO SCALE



9 DETAIL Z
M-02 SCALE : NOT TO SCALE

2 REINFORCEMENT DETAILS OF BOX
M-02 SCALE : 1:25

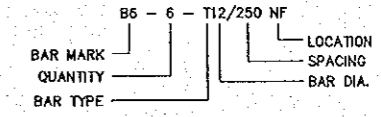
NOTES:

- ALL DIMENSIONS ARE IN MILLIMETER UNLESS OTHERWISE SPECIFIED.
- NOT ALL REINFORCEMENT ARE NECESSARILY SHOWN IN ANY VIEW.
- CONCRETE GRADE ARE CLASS 25 FOR R.C.C. WORK AND CLASS 15 FOR LEVELLING WORK.
- REINFORCEMENT TO BE DEFORMED BAR TO AASHTO M31 (ASTM A615) GRADE 60.
- LAP LENGTHS HAVE BEEN CONSIDERED IN BAR BENDING SCHEDULE FOR ALL SPECIFIED PLACES USE FOLLOWING LAP LENGTH AS MINIMUM FOR ALL UNSPECIFIED PLACES.

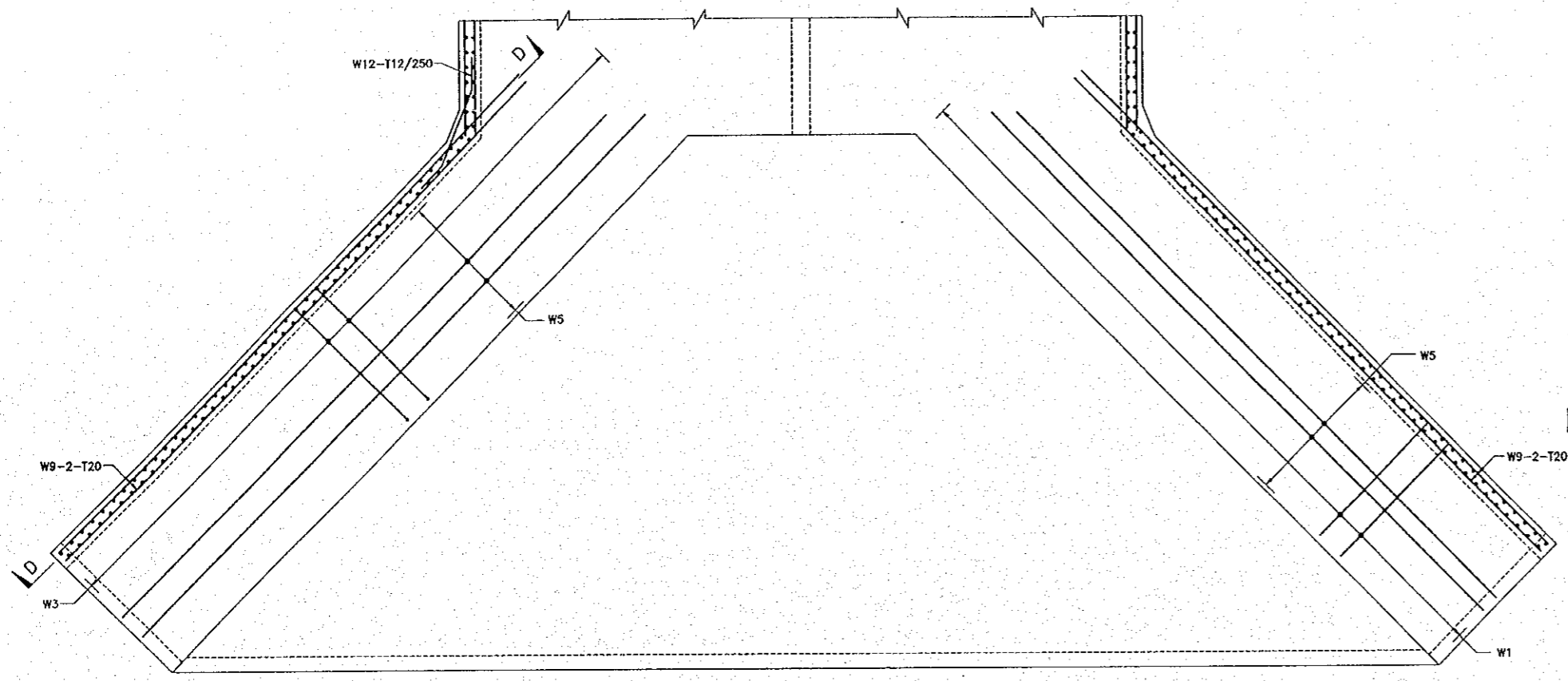
BAR DIA	LAP LENGTH
25#	950mm
20#	650mm
16#	550mm
12#	400mm

- CLEAR COVER OF REBARS :
TOP OF TOP SLAB : 50
BOTTOM OF TOP SLAB : 40
TOP & BOTTOM OF BOTTOM SLAB & WALLS : 65

7. KEY TO REINFORCEMENT NOMENCLATURE



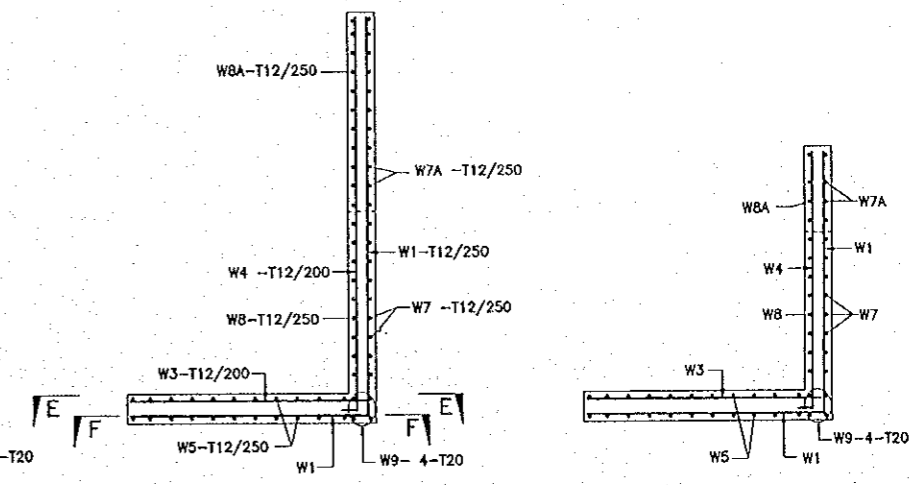
T = GRADE 60 BARS
R = GRADE 40 BARS
ABBREVIATION:-
NF = NEAR FACE; FF = FAR FACE; STAGG = STAGGERED
STAGGNF = STAGGERED; ALT = ALTERNATE SPACING.



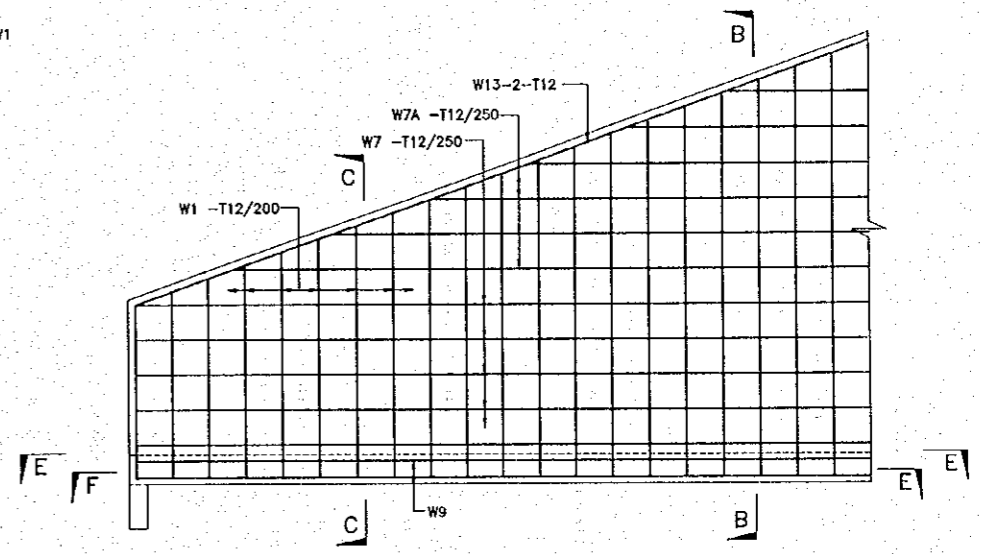
REINF. DETAIL OF WING WALL BASE
(SECTION E-E)

REINF. DETAIL OF WING WALL BASE
(SECTION F-F)

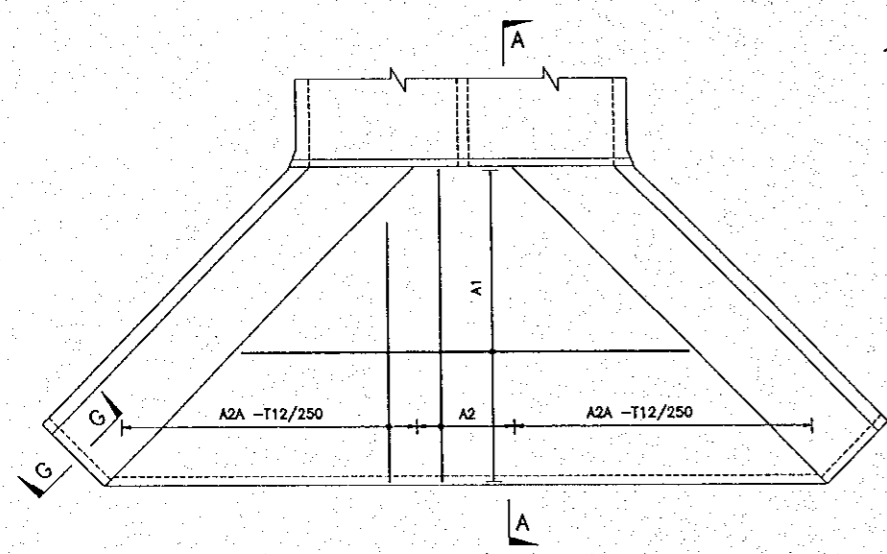
2 REINF. DETAIL OF WING WALL
M-03 SCALE : NOT TO SCALE



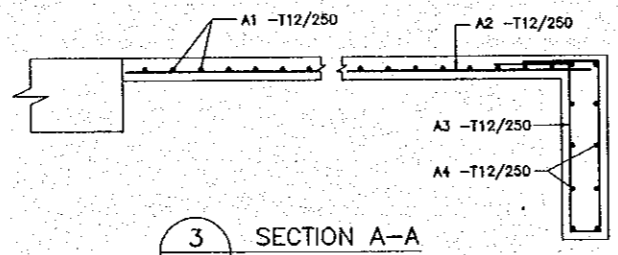
5 SECTION C-C
M-03 SCALE : NOT TO SCALE



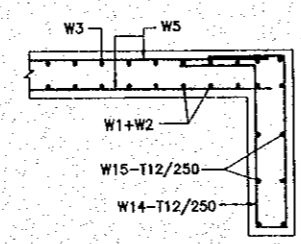
6 SECTION D-D
E-23 SCALE 1:50



1 REINF. DETAIL OF APRON & CUTOFF
E-03 SCALE 1:100



3 SECTION A-A
M-03 SCALE 1:20



7 SECTION G-G
M-03 SCALE 1:20

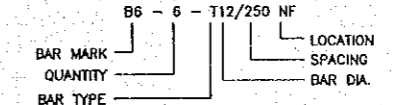
NOTES:

- ALL DIMENSIONS ARE IN MILLIMETER UNLESS OTHERWISE SPECIFIED.
- NOT ALL REINFORCEMENT ARE NECESSARILY SHOWN IN ANY VIEW.
- CONCRETE GRADE ARE CLASS 25 FOR R.C.C. WORK AND CLASS 15 FOR LEVELLING WORK.
- REINFORCEMENT TO BE DEFORMED BAR TO AASHTO M31 (ASTM A615) GRADE 60.
- LAP LENGTHS HAVE BEEN CONSIDERED IN BAR BENDING SCHEDULE FOR ALL SPECIFIED PLACES USE FOLLOWING LAP LENGTH AS MINIMUM FOR ALL UNSPECIFIED PLACES.

BAR DIA	LAP LENGTH
25#	950mm
20#	650mm
16#	550mm
12#	400mm

- CLEAR COVER OF REBARS :
TOP OF TOP SLAB : 50
BOTTOM OF TOP SLAB : 40
TOP & BOTTOM OF BOTTOM SLAB & WALLS : 65

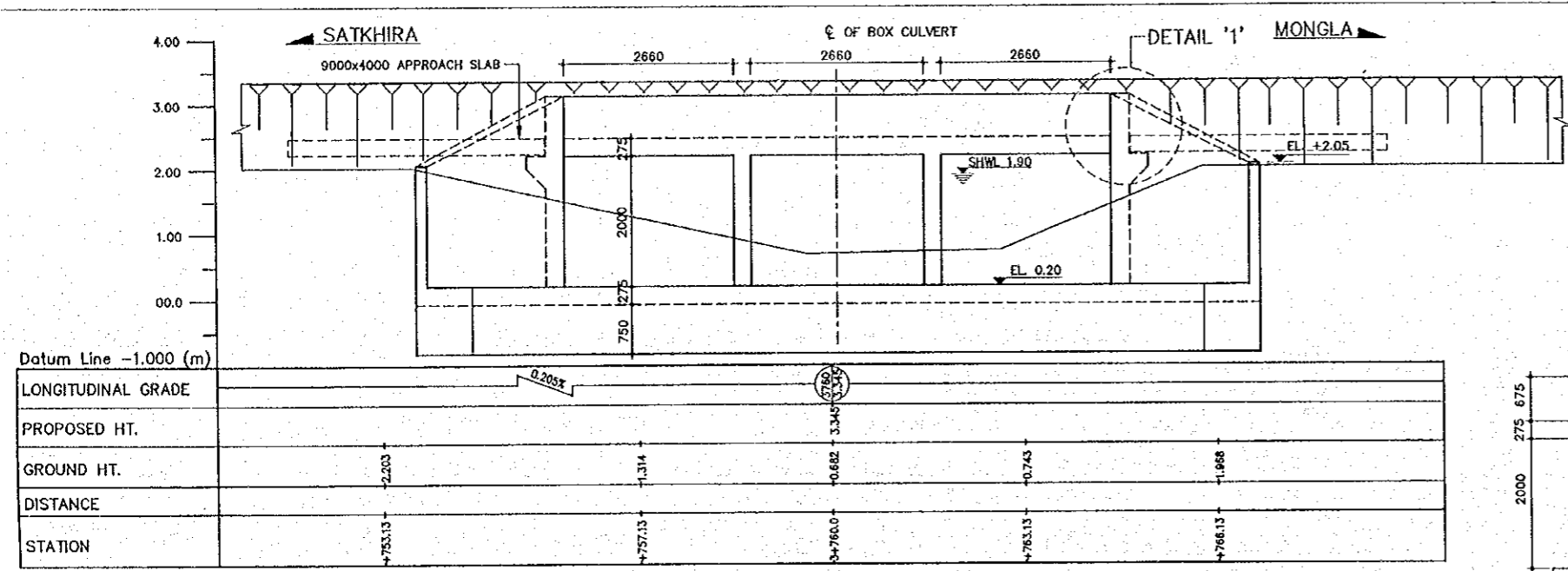
7. KEY TO REINFORCEMENT NOMENCLATURE



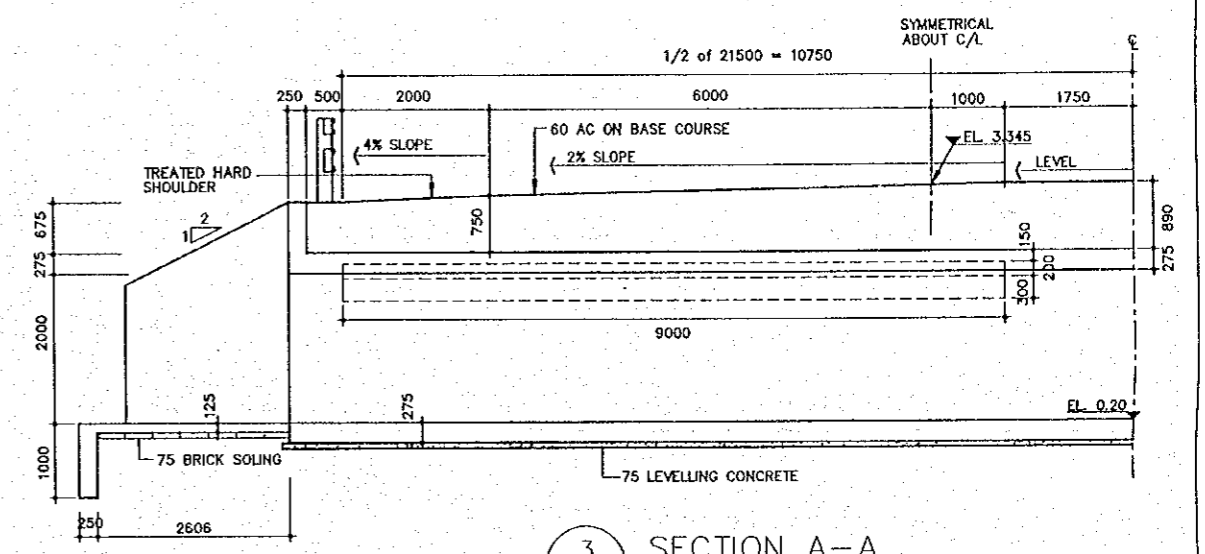
T = GRADE 60 BARS
R = GRADE 40 BARS
ABBREVIATION:-
NF = NEAR FACE; FF = FAR FACE; STAGG = STAGGERED
STAGGNF = STAGGERED; ALT = ALTERNATE SPACING.

THE STUDY ON CONSTRUCTION OF THE BRIDGE
OVER THE RIVER RUPSA IN KHULNA (PHASE 2)
GENERAL ARRANGEMENT OF BOX CULVERT
Aralia Khal (STA. 3+760)

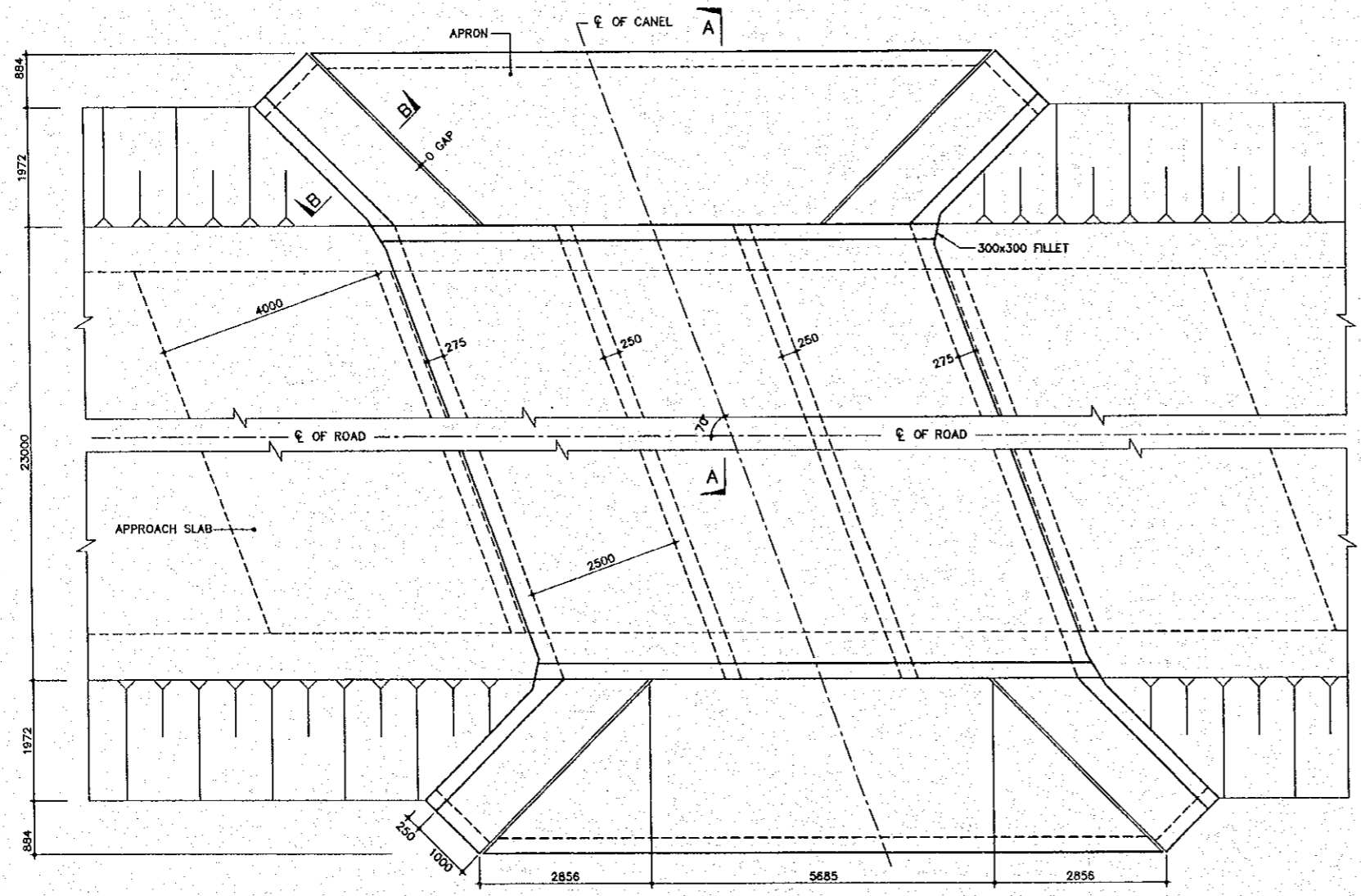
SCALE AS SHOWN
SHEET NO. M-05



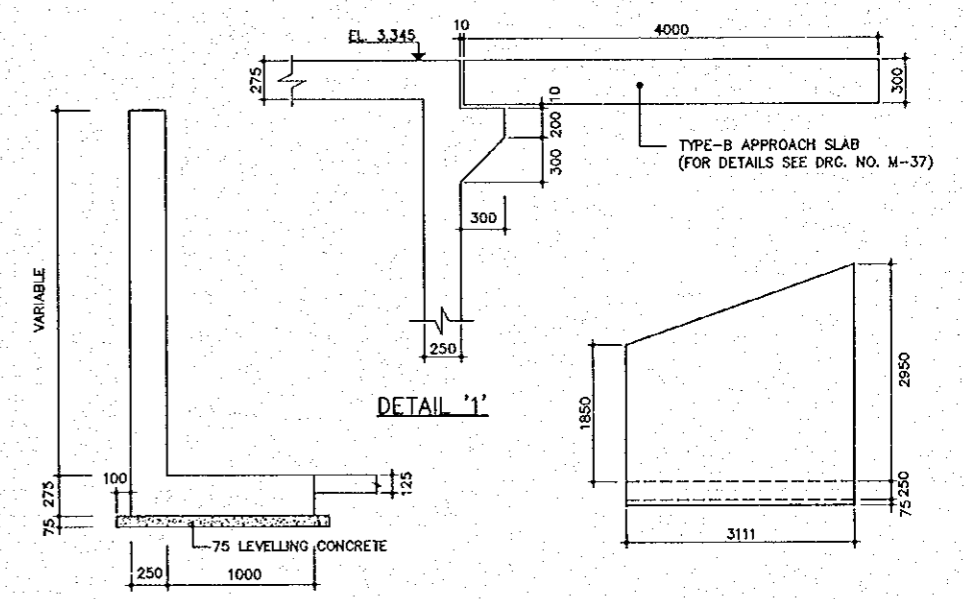
2 GENERAL ELEVATION AT C/L
M-05 SCALE 1:50



3 SECTION A-A
M-05 SCALE 1:50



1 PART PLAN
M-05 SCALE 1:50



4 SECTION B-B
M-05 SCALE 1:25

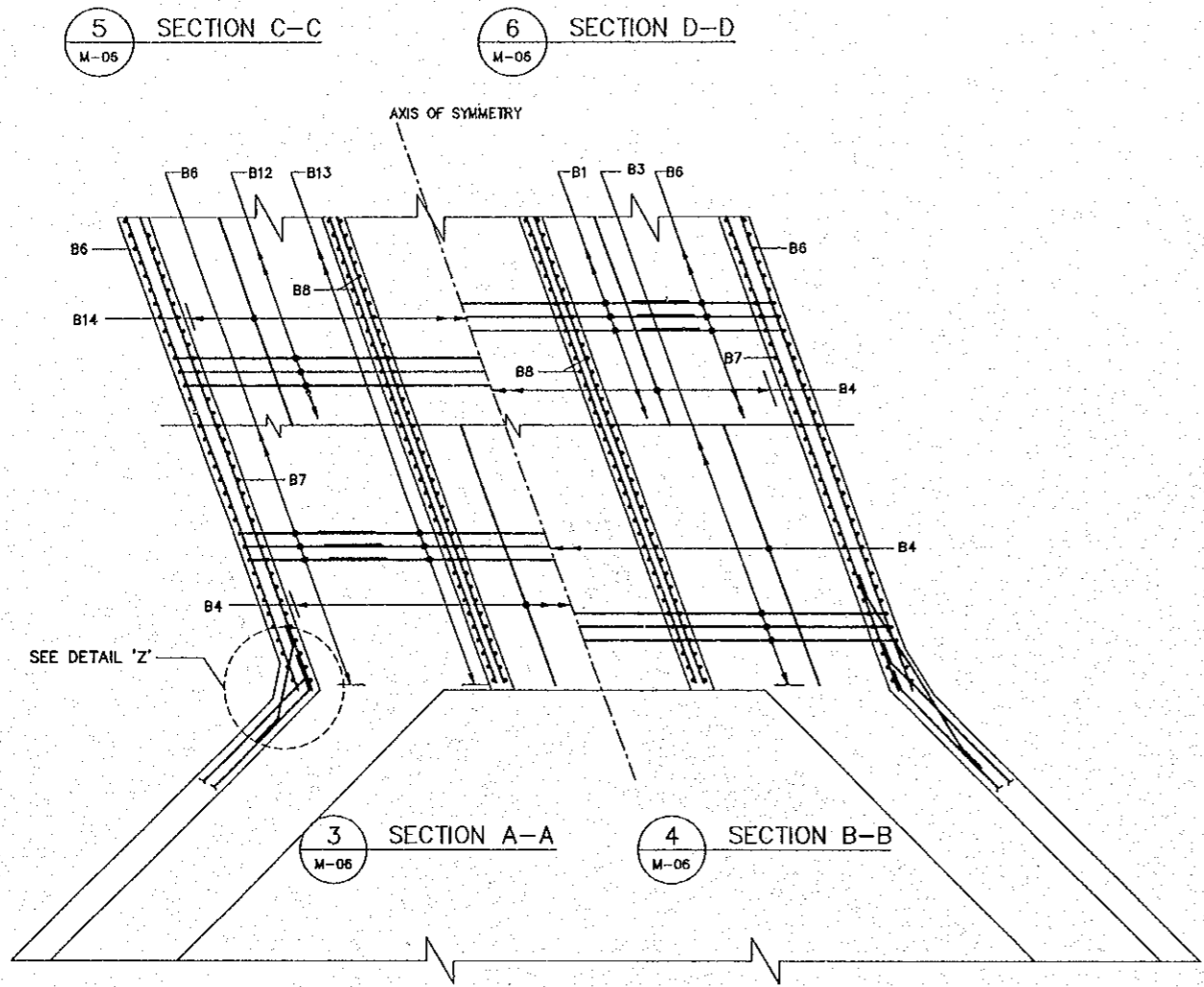
5 ELEVATION OF WING WALL AT WATER SIDE
M-05 SCALE 1:50

- NOTES:
- ALL DIMENSIONS ARE IN MILLIMETER UNLESS OTHERWISE SPECIFIED.
 - THIS DRAWING TO BE READ IN CONJUNCTION WITH DRG. NO. M-06, M-07, M-08 & M-37.
 - ALL ELEVATIONS ARE IN P.W.D., meter.

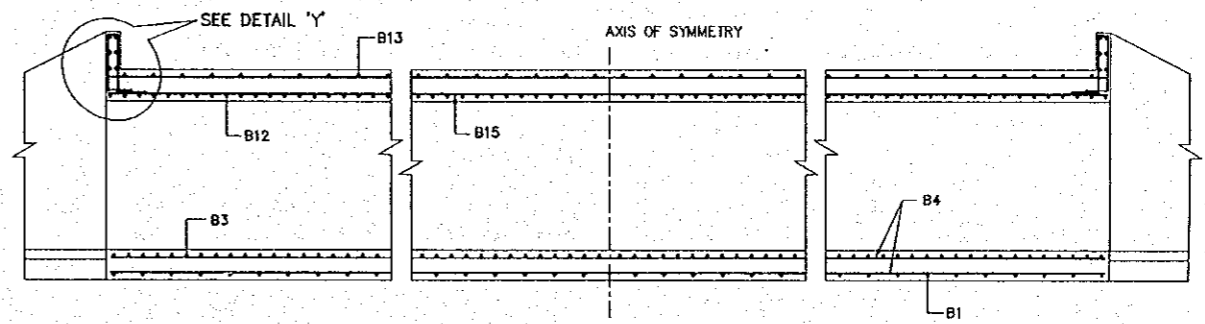
THE STUDY ON CONSTRUCTION OF THE BRIDGE
OVER THE RIVER RUPSA IN KHULNA (PHASE 2)

REINFORCEMENT DETAILS OF BOX
Aralia Khol (STA. 3+760)

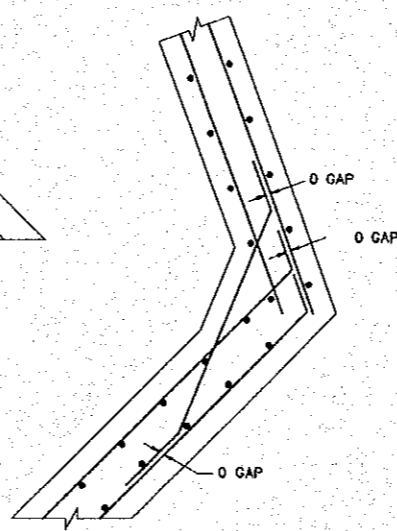
SCALE	SHEET NO.
AS SHOWN	M-06



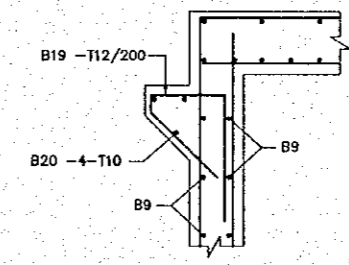
1 PART PLAN & SECTION
M-06 SCALE : 1:50



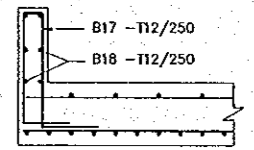
7 SECTION E-E
M-06 SCALE : 1:50



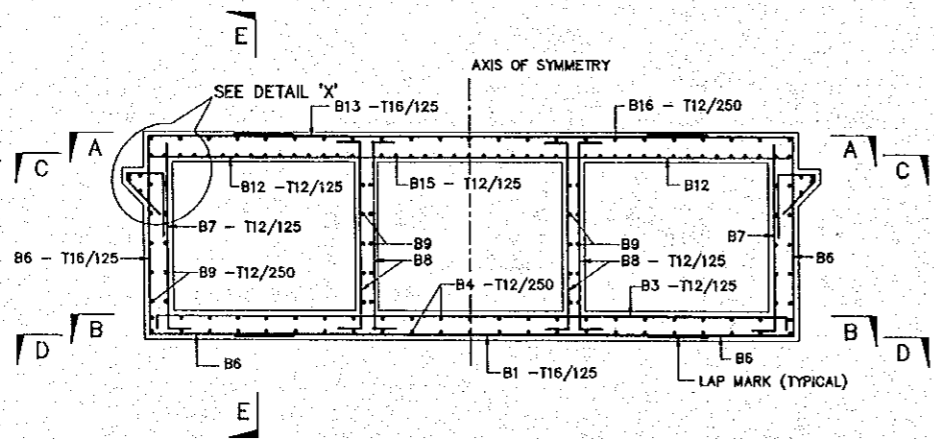
9 DETAIL 'Z'
M-02 SCALE : NOT TO SCALE



8 DETAIL 'X'
M-02 SCALE : NOT TO SCALE



9 DETAIL 'Y'
M-06 SCALE : NOT TO SCALE



2 REINFORCEMENT DETAILS OF BOX
M-06 SCALE : 1:50

NOTES:

- ALL DIMENSIONS ARE IN MILLIMETER UNLESS OTHERWISE SPECIFIED.
- NOT ALL REINFORCEMENT ARE NECESSARILY SHOWN IN ANY VIEW.
- CONCRETE GRADE ARE CLASS 25 FOR R.C.C. WORK AND CLASS 15 FOR LEVELLING WORK.
- REINFORCEMENT TO BE DEFORMED BAR TO AASHTO M31 (ASTM A615) GRADE 60.
- LAP LENGTHS HAVE BEEN CONSIDERED IN BAR BENDING SCHEDULE FOR ALL SPECIFIED PLACES USE FOLLOWING LAP LENGTH AS MINIMUM FOR ALL UNSPECIFIED PLACES.

BAR DIA	LAP LENGTH
25#	950mm
20#	650mm
16#	550mm
12#	400mm

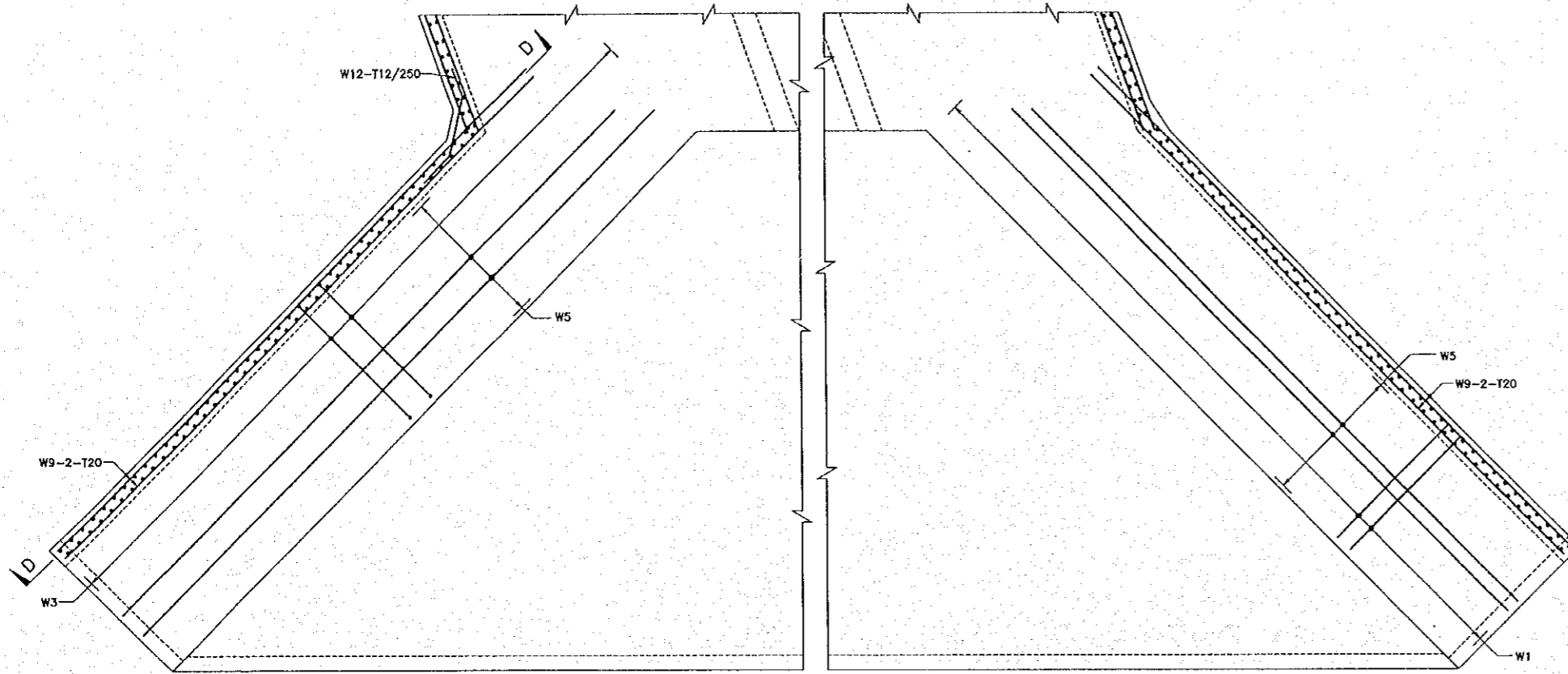
- CLEAR COVER OF REBARS :
TOP OF TOP SLAB : 50
BOTTOM OF TOP SLAB : 40
TOP & BOTTOM OF BOTTOM SLAB & WALLS : 65

- KEY TO REINFORCEMENT NOMENCLATURE
BB - 6 - T12/250 NF
BAR MARK QUANTITY BAR TYPE
T = GRADE 60 BARS
R = GRADE 40 BARS
ABBREVIATION: -
NF = NEAR FACE; FF = FAR FACE; STAGG = STAGGERED
STAGGNF = STAGGERED; ALT = ALTERNATE SPACING.

THE STUDY ON CONSTRUCTION OF THE BRIDGE
OVER THE RIVER RUPSA IN KHULNA (PHASE 2)

REINFORCEMENT DETAILS OF WING WALL
Aralia Khal (STA. 3+760)

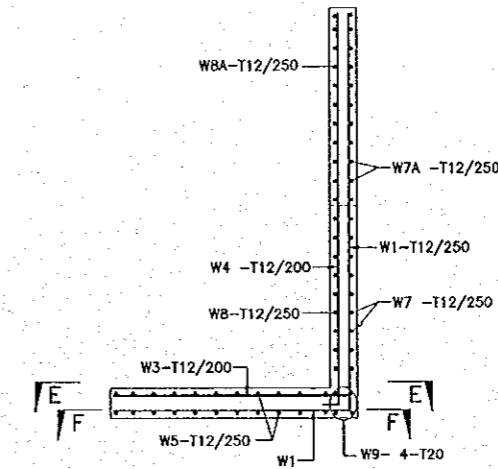
SCALE AS SHOWN SHEET NO. M-07



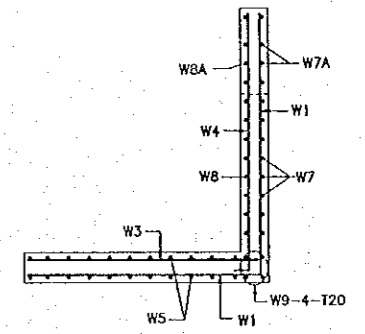
REINF. DETAIL OF WING WALL BASE
(SECTION E-E)

REINF. DETAIL OF WING WALL BASE
(SECTION F-F)

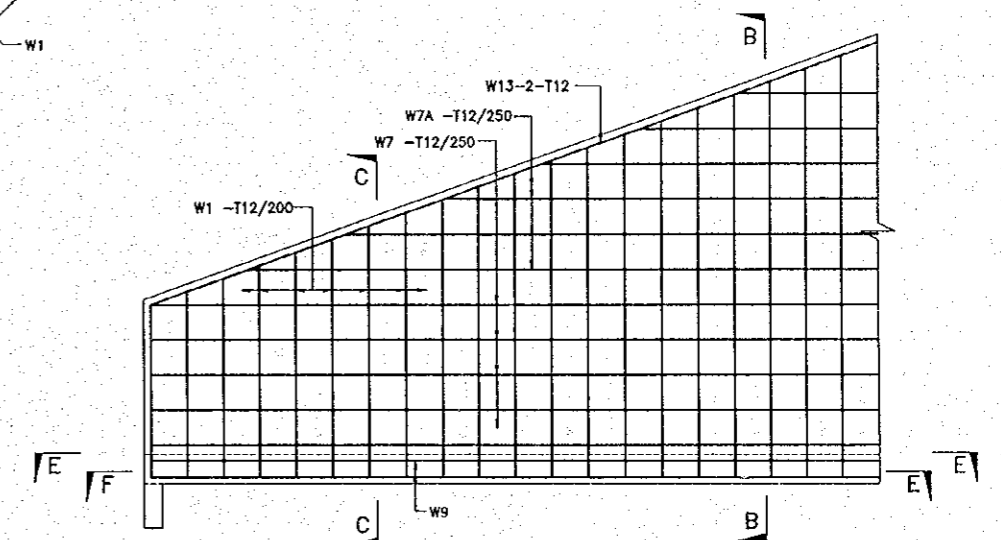
2 REINF. DETAIL OF WING WALL
M-07 SCALE: NOT TO SCALE



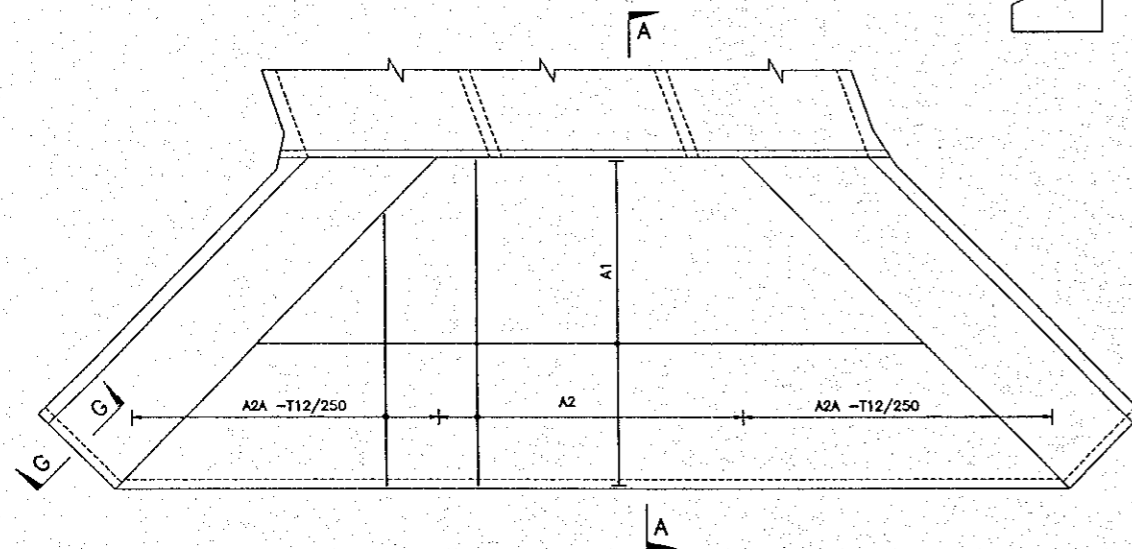
4 SECTION B-B
M-07 SCALE: NOT TO SCALE



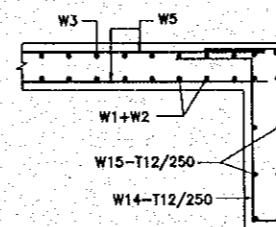
5 SECTION C-C
M-07 SCALE: NOT TO SCALE



6 SECTION D-D
M-07 SCALE: NOT TO SCALE



3 SECTION A-A
M-07 SCALE: 1:20



7 SECTION G-G
M-07 SCALE: 1:20

1 REINF. DETAIL OF APRON & CUTOFF
M-07 SCALE 1:100

NOTES:

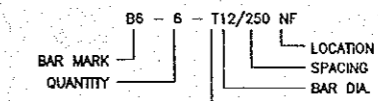
- ALL DIMENSIONS ARE IN MILLIMETER UNLESS OTHERWISE SPECIFIED.
- NOT ALL REINFORCEMENT ARE NECESSARILY SHOWN IN ANY VIEW.
- CONCRETE GRADE ARE CLASS 25 FOR R.C.C. WORK AND CLASS 15 FOR LEVELLING WORK.
- REINFORCEMENT TO BE DEFORMED BAR TO AASHTO M31 (ASTM A615) GRADE 60.
- LAP LENGTHS HAVE BEEN CONSIDERED IN BAR BENDING SCHEDULE FOR ALL SPECIFIED PLACES USE FOLLOWING LAP LENGTH AS MINIMUM FOR ALL UNSPECIFIED PLACES.

BAR DIA	LAP LENGTH
25#	950mm
20#	650mm
16#	550mm
12#	400mm

6. CLEAR COVER OF REBARS :

TOP OF TOP SLAB	: 50
BOTTOM OF TOP SLAB	: 40
TOP & BOTTOM OF BOTTOM SLAB & WALLS	: 65

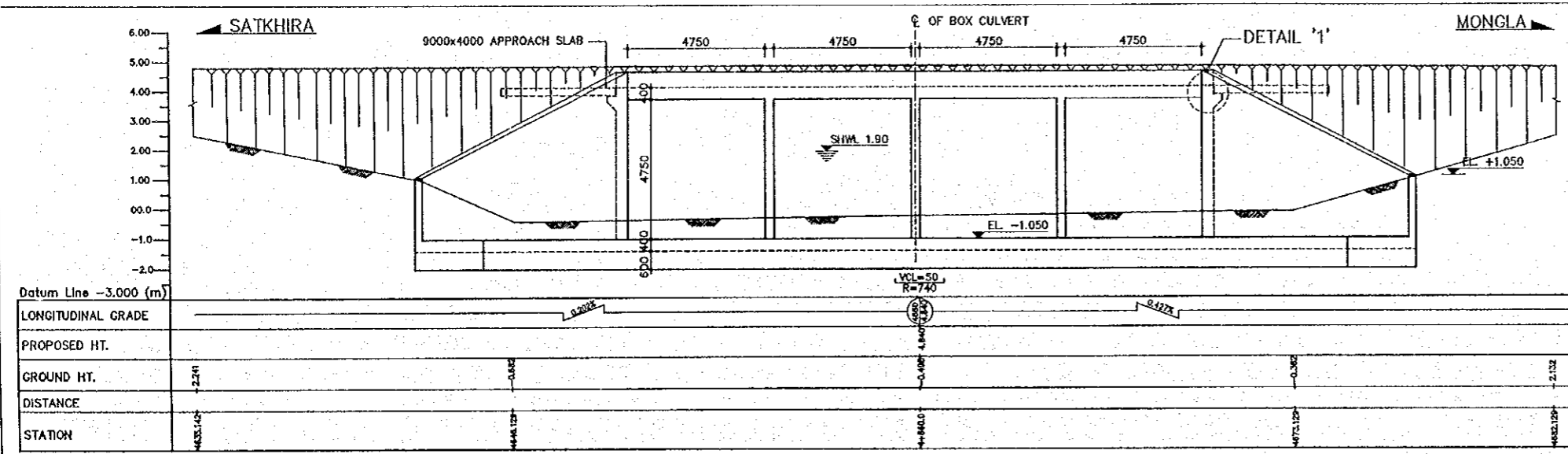
7. KEY TO REINFORCEMENT NOMENCLATURE



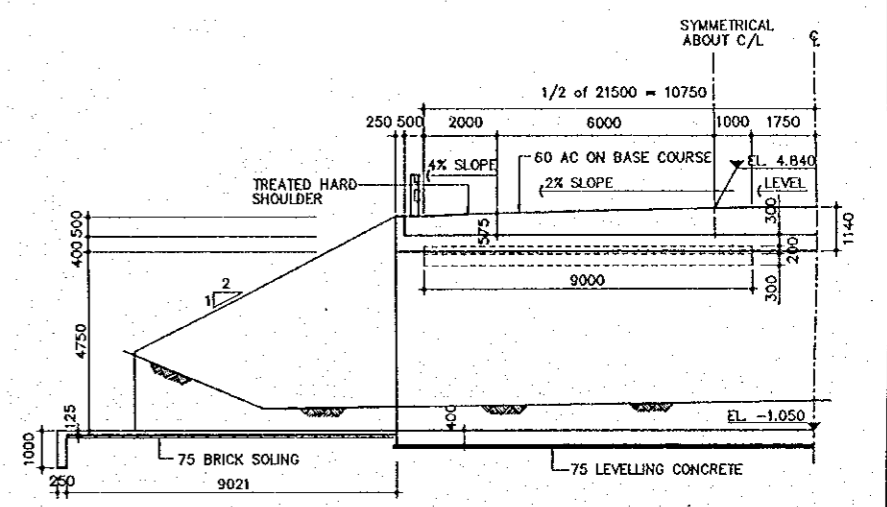
T = GRADE 60 BARS
R = GRADE 40 BARS
ABBREVIATION:-
NF = NEAR FACE; FF = FAR FACESTAGG = STAGGERED
STAGGNF = STAGGERED; ALT = ALTERNATE SPACING.

THE STUDY ON CONSTRUCTION OF THE BRIDGE
OVER THE RIVER RUPSA IN KHULNA (PHASE 2)
GENERAL ARRANGEMENT OF BOX CULVERT
Narikal Baria Khal (STA. 4+660)

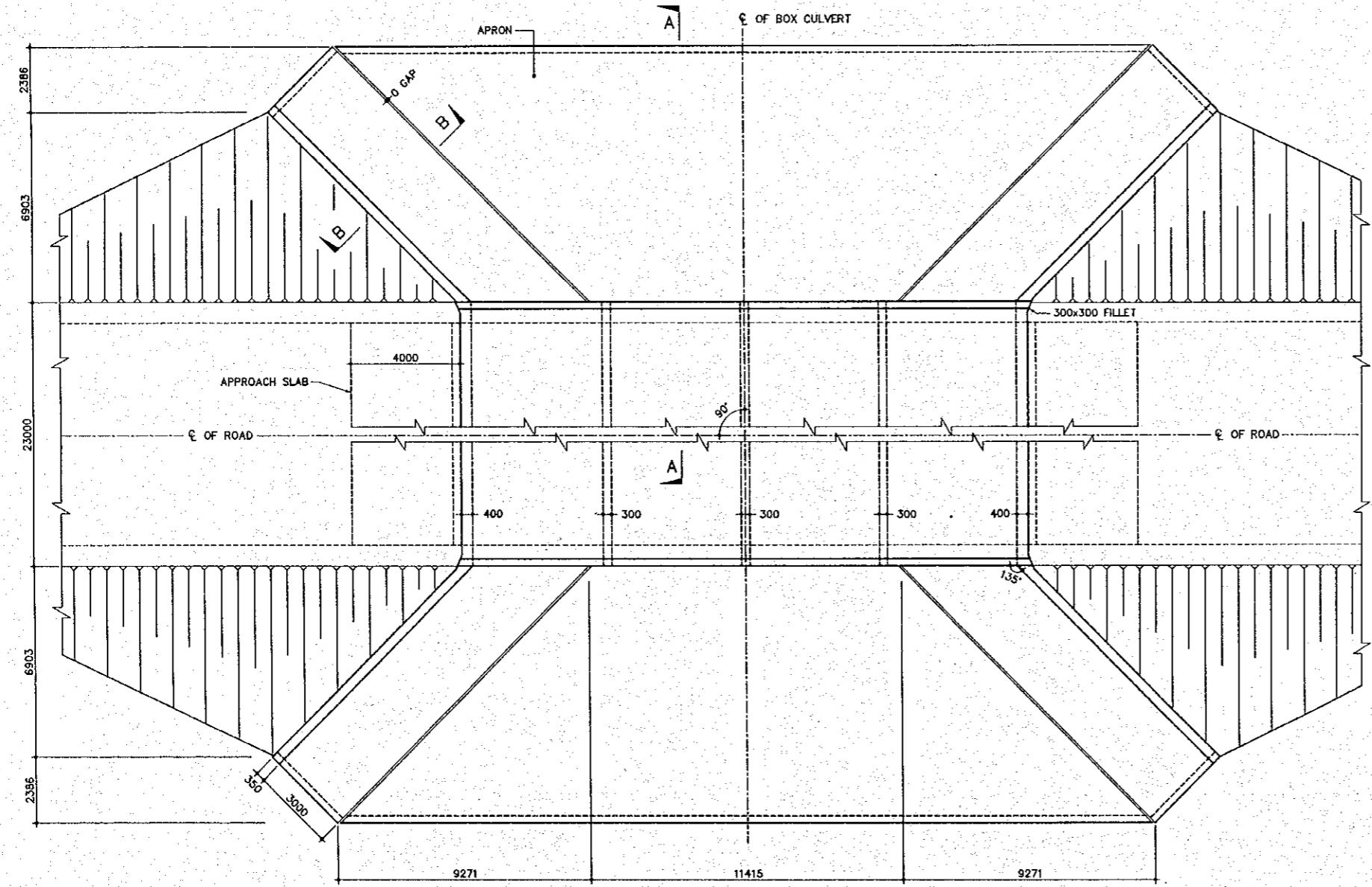
SCALE AS SHOWN
SHEET NO. M-09



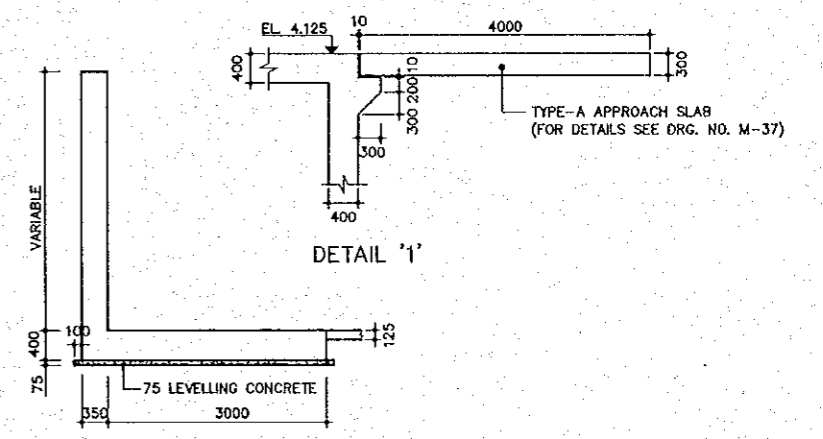
2 GENERAL ELEVATION AT C/L
M-09 SCALE 1:100



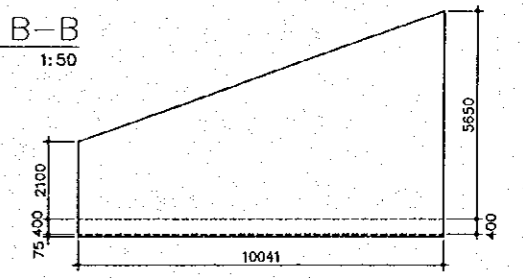
3 SECTION A-A
M-09 SCALE 1:100



1 PART PLAN
M-09 SCALE 1:100

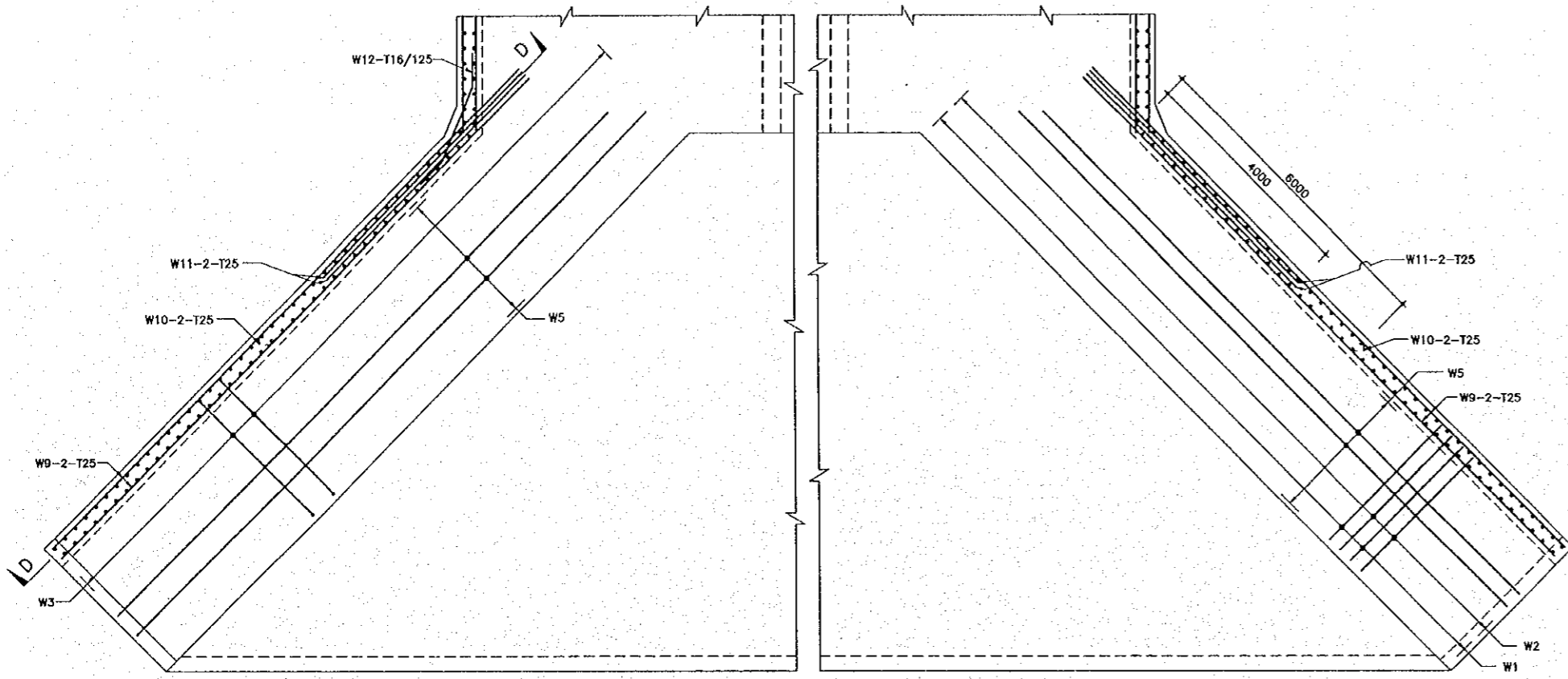


4 SECTION B-B
M-09 SCALE 1:50



5 ELEVATION OF WING WALL AT WATER SIDE
M-09 SCALE 1:100

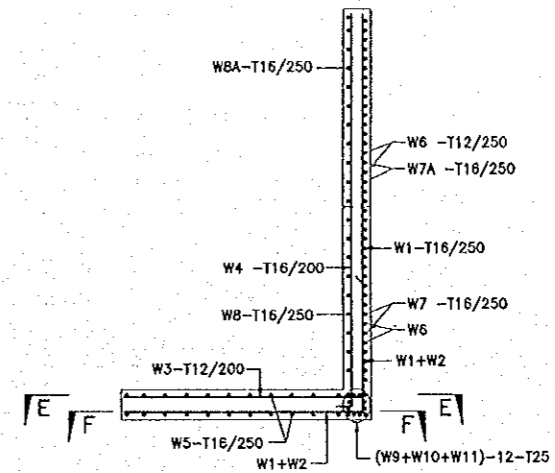
- NOTES:
1. ALL DIMENSIONS ARE IN MILLIMETER UNLESS OTHERWISE SPECIFIED.
 2. THIS DRAWING TO BE READ IN CONJUNCTION WITH DRG. NO. M-10, M-11, M-12 & M-37.
 3. ALL ELEVATIONS ARE IN P.W.D. meter.
 4. PROVISION SHOULD BE KEPT OVER DECK FOR PLACEMENT OF GUARD RAIL.



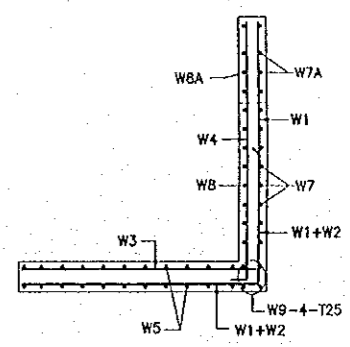
REINF. DETAIL OF WING WALL BASE
(SECTION E-E)

REINF. DETAIL OF WING WALL BASE
(SECTION F-F)

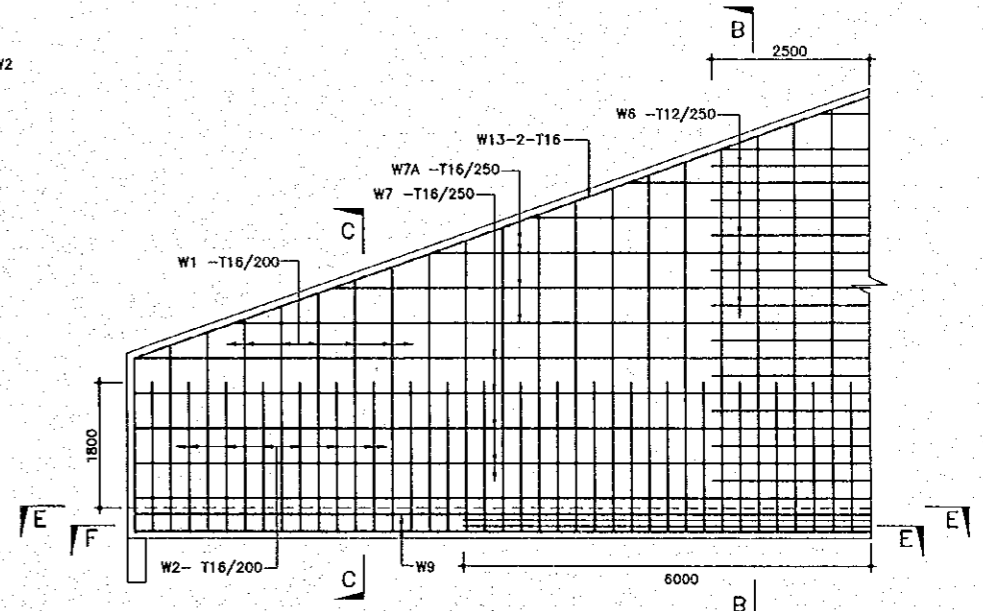
2 REINF. DETAIL OF WING WALL
M-11 SCALE : NOT TO SCALE



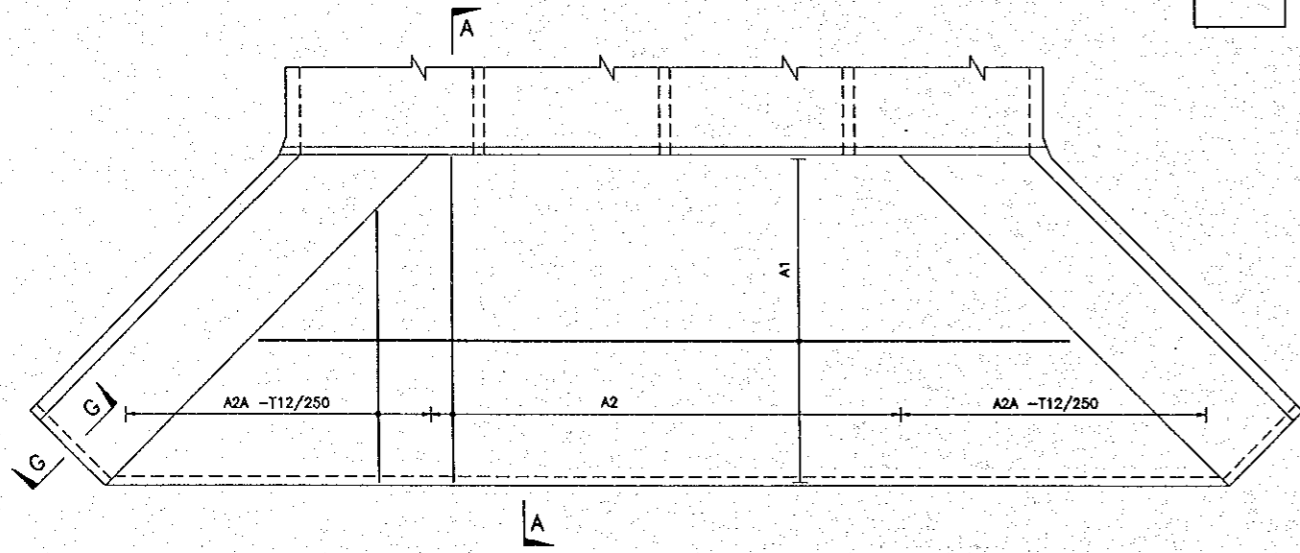
4 SECTION B-B
M-11 SCALE : NOT TO SCALE



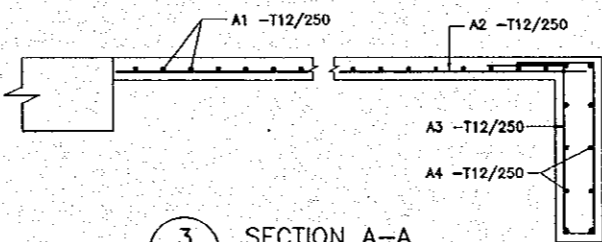
5 SECTION C-C
M-11 SCALE : NOT TO SCALE



6 SECTION D-D
M-11 SCALE : NOT TO SCALE



3 SECTION A-A
M-11 SCALE 1:20



7 SECTION G-G
M-11 SCALE 1:20

1 REINF. DETAIL OF APRON & CUTOFF
B-09 SCALE 1:100

NOTES:

- ALL DIMENSIONS ARE IN MILLIMETER UNLESS OTHERWISE SPECIFIED.
- NOT ALL REINFORCEMENT ARE NECESSARILY SHOWN IN ANY VIEW.
- CONCRETE GRADE ARE CLASS 25 FOR R.C.C. WORK AND CLASS 15 FOR LEVELLING WORK.
- REINFORCEMENT TO BE DEFORMED BAR TO AASHTO M31 (ASTM A615) GRADE 60.
- LAP LENGTHS HAVE BEEN CONSIDERED IN BAR BENDING SCHEDULE FOR ALL SPECIFIED PLACES USE FOLLOWING LAP LENGTH AS MINIMUM FOR ALL UNSPECIFIED PLACES.
- CLEAR COVER OF REBARS :

TOP OF TOP SLAB	: 50
BOTTOM OF TOP SLAB	: 40
TOP & BOTTOM OF BOTTOM SLAB & WALLS	: 65
- KEY TO REINFORCEMENT NOMENCLATURE

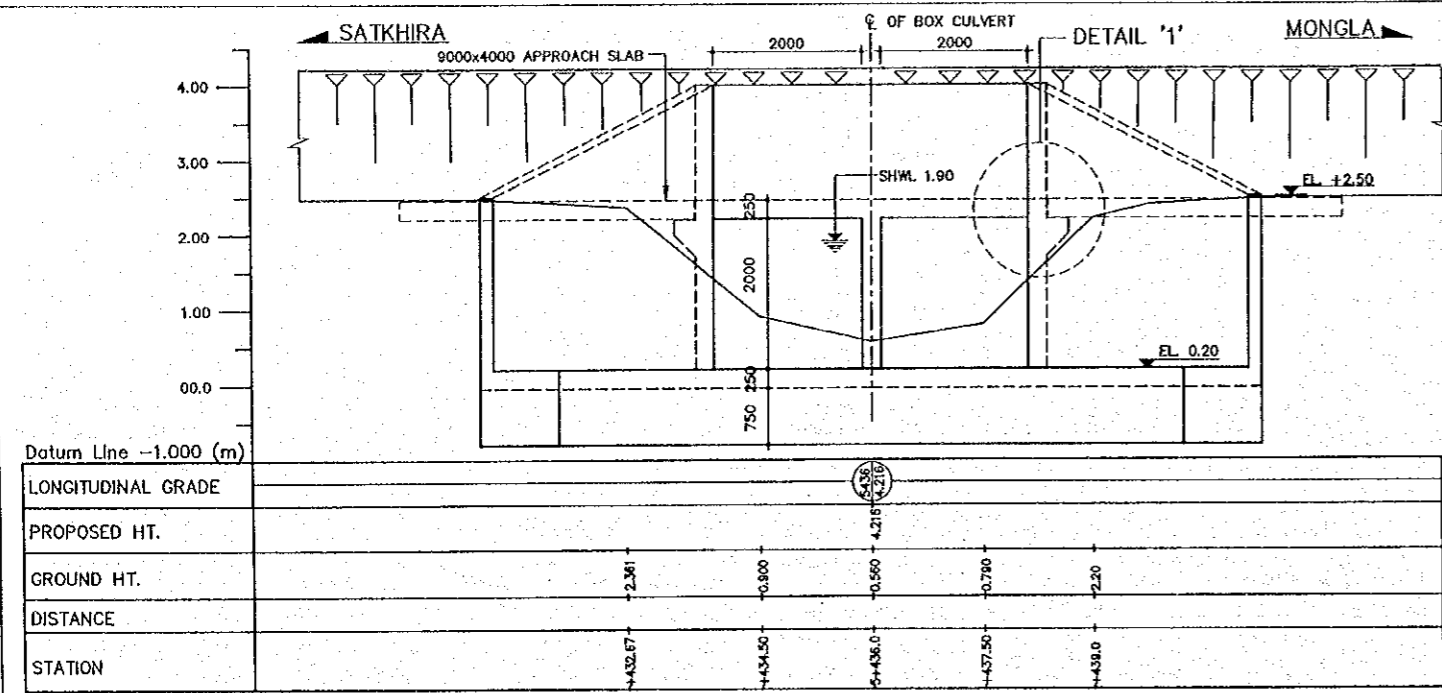
B6 - 6 - T12/250 NF	LOCATION
BAR MARK	SPACING
QUANTITY	BAR DIA.
BAR TYPE	

T = GRADE 60 BARS
R = GRADE 40 BARS
ABBREVIATION:-
NF = NEAR FACE; FF = FAR FACE; STAGG = STAGGERED
STAGG = STAGGERED; ALT = ALTERNATE SPACING.

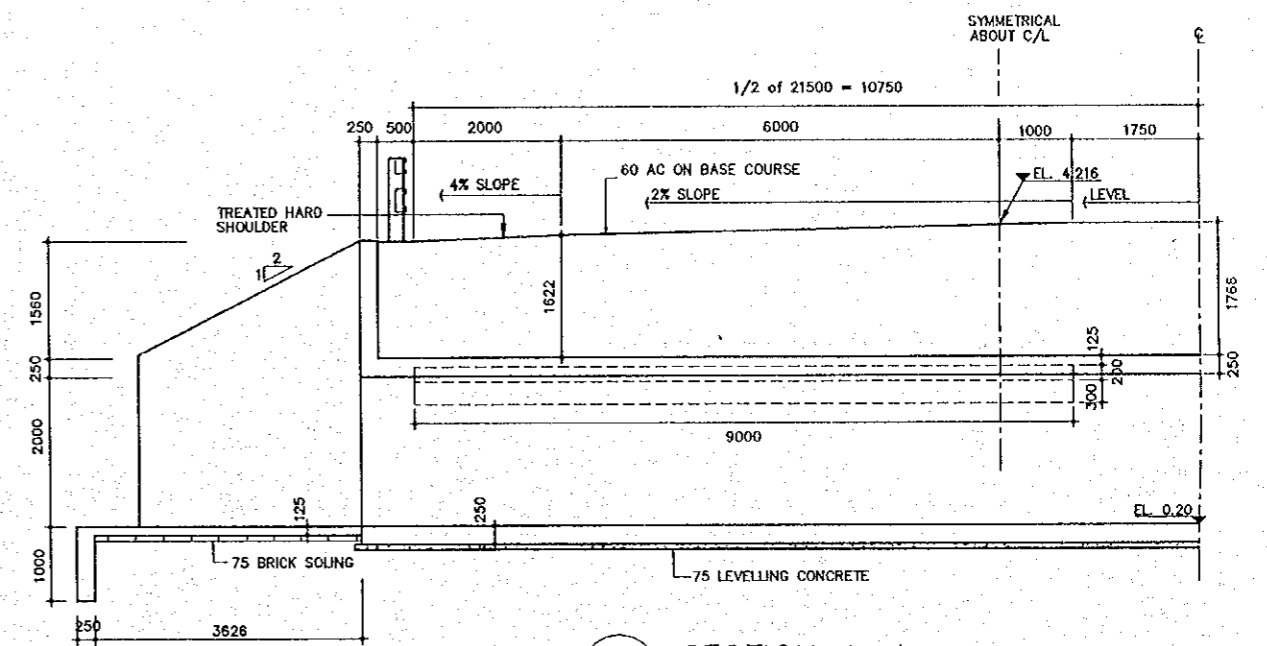
BAR DIA	LAP LENGTH
25#	950mm
20#	650mm
16#	550mm
12#	400mm

THE STUDY ON CONSTRUCTION OF THE BRIDGE
OVER THE RIVER RUPSA IN KHULNA (PHASE 2)
GENERAL ARRANGEMENT OF BOX CULVERT
Karate Khal (STA. 5+436)

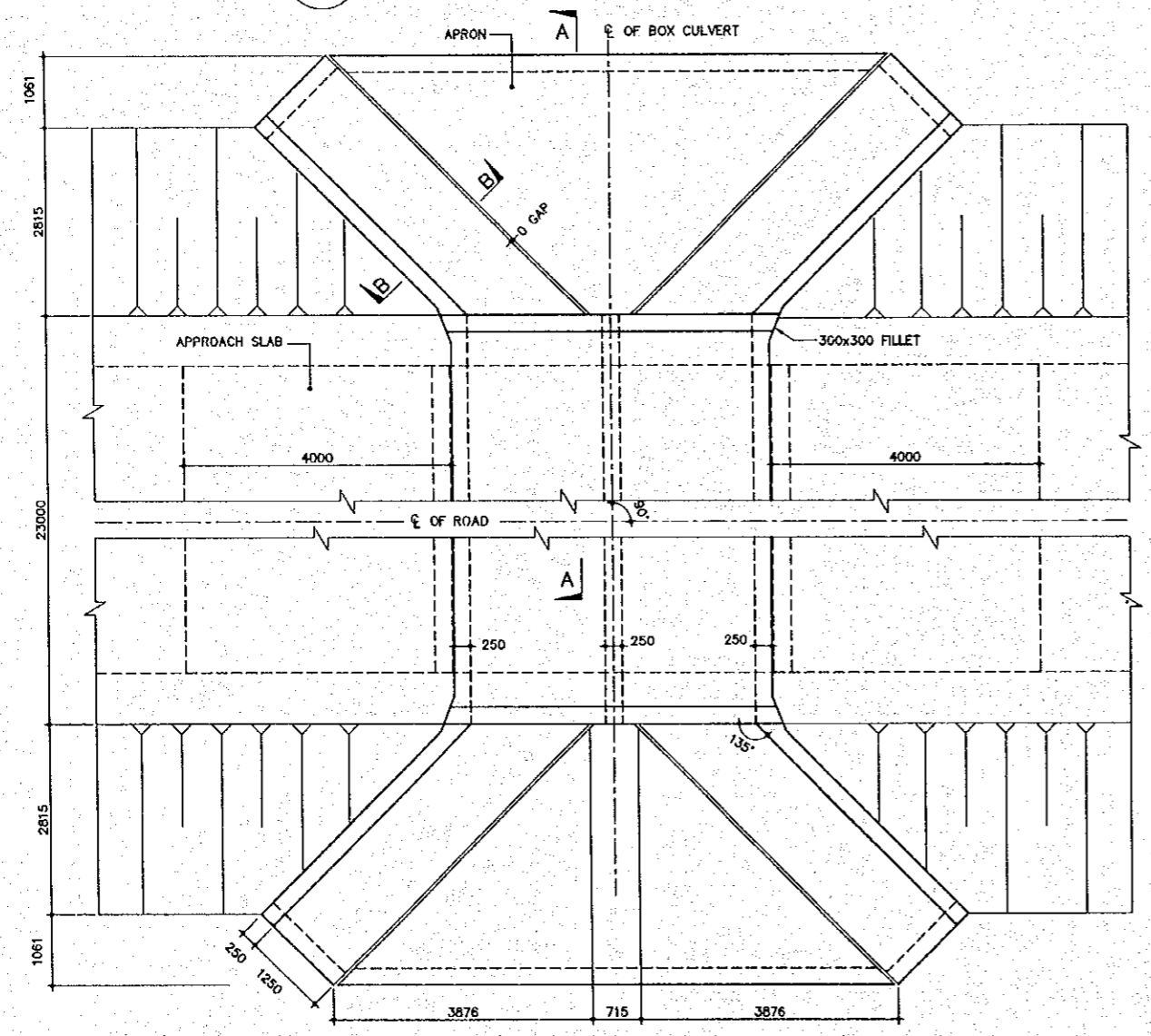
SCALE	SHEET NO.
AS SHOWN	M-13



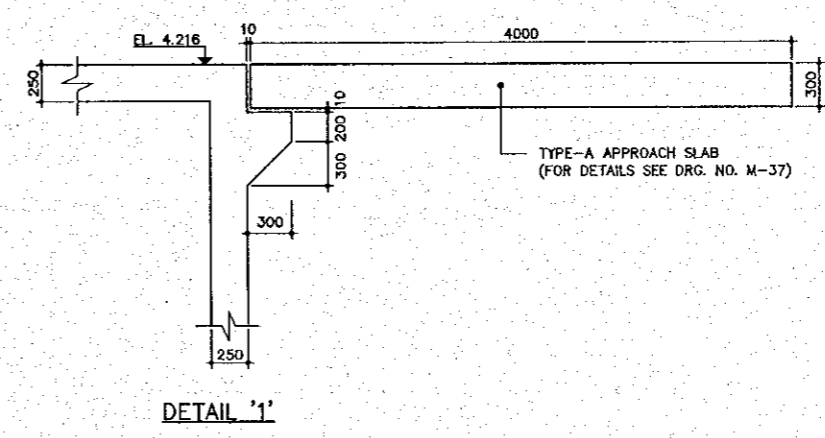
2 GENERAL ELEVATION AT C/L
M-13 SCALE 1:50



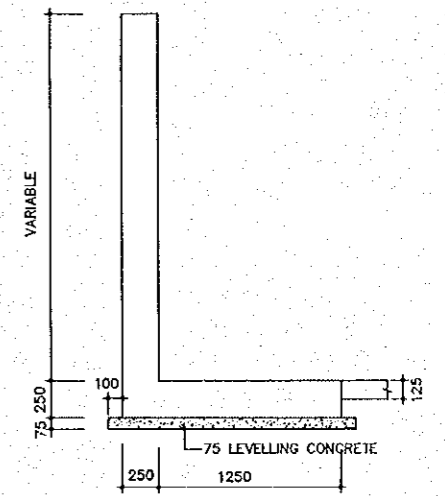
3 SECTION A-A
M-13 SCALE 1:50



1 PART PLAN
M-13 SCALE 1:50



5 ELEVATION OF WING WALL AT WATER SIDE
M-13 SCALE 1:50



4 SECTION B-B
M-13 SCALE 1:25

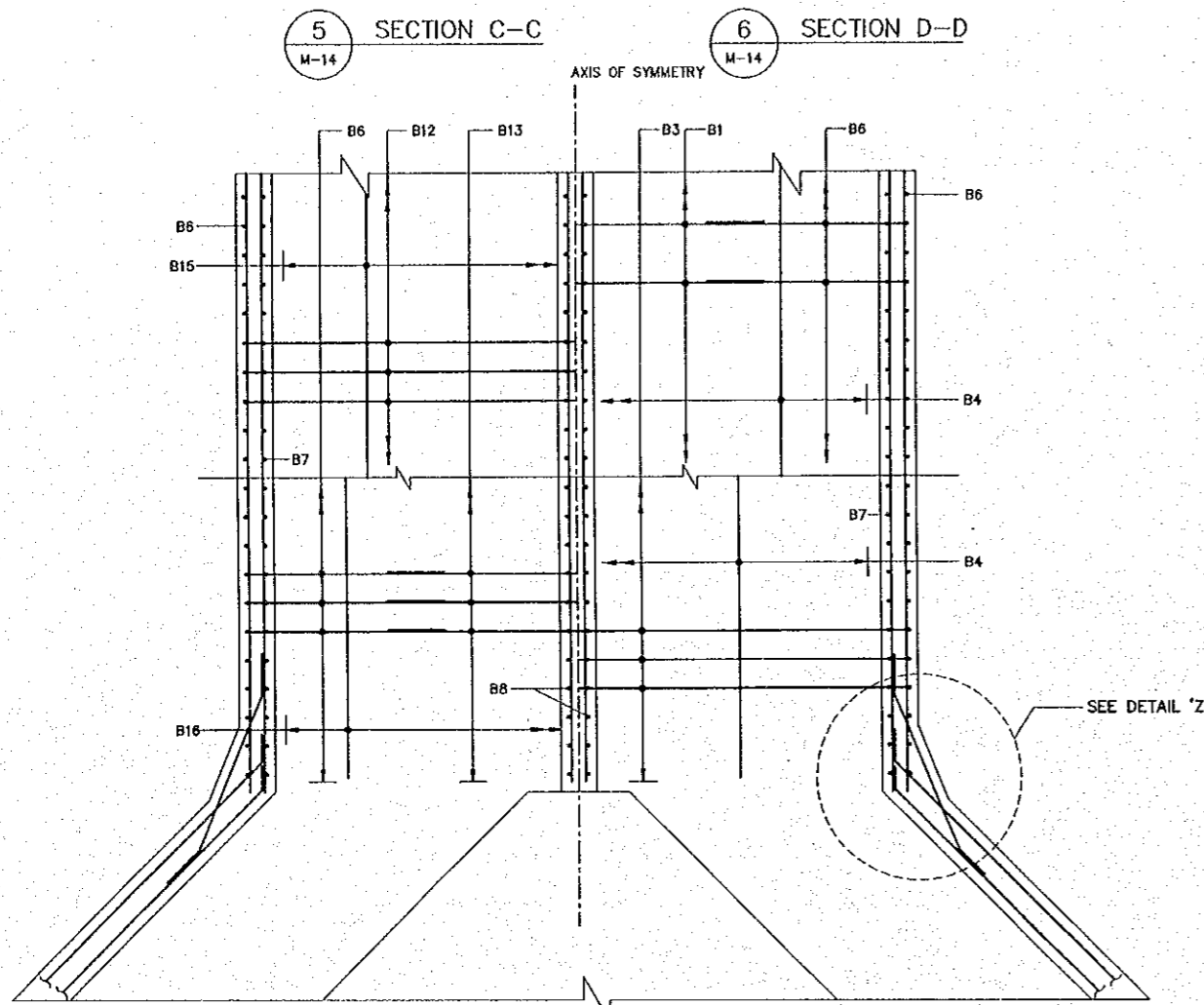
- NOTES:
1. ALL DIMENSIONS ARE IN MILLIMETER UNLESS OTHERWISE SPECIFIED.
 2. THIS DRAWING TO BE READ IN CONJUNCTION WITH DRG. NO. M-14, M-15, M-16 & M-37.
 3. ALL ELEVATIONS ARE IN P.W.D., meter.
 4. PROMSION SHOULD BE KEPT OVER DECK FOR PLACEMENT OF GUARD RAIL.

THE STUDY ON CONSTRUCTION OF THE BRIDGE
OVER THE RIVER RUPSA IN KHULNA (PHASE 2)

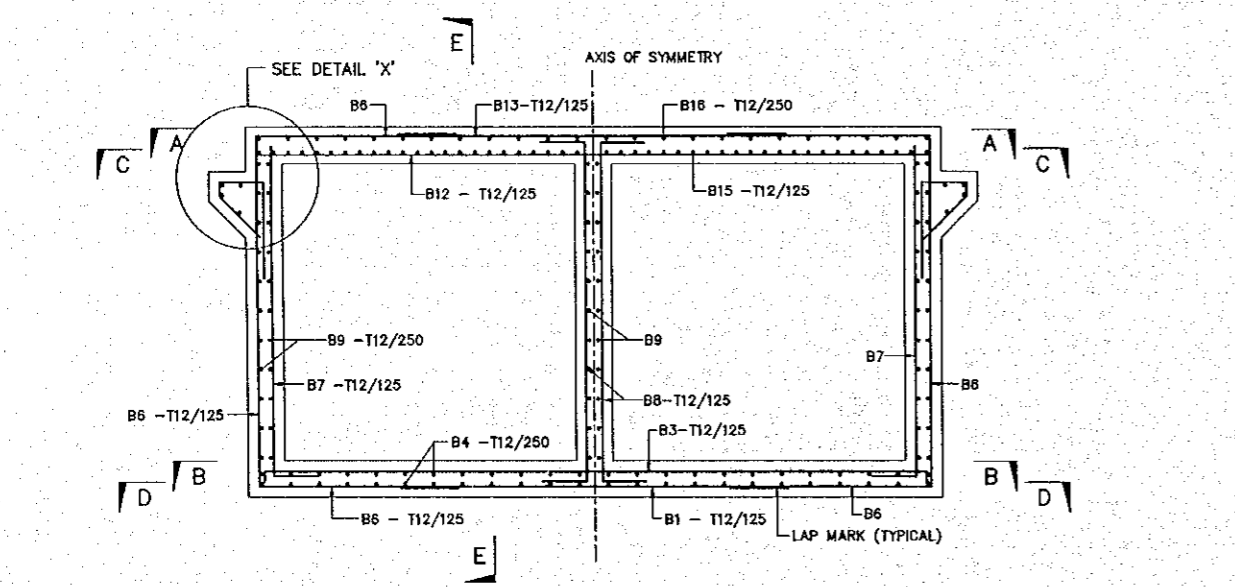
REINFORCEMENT DETAILS OF BOX
Karate Khal (STA. 5+436)

SCALE
AS SHOWN

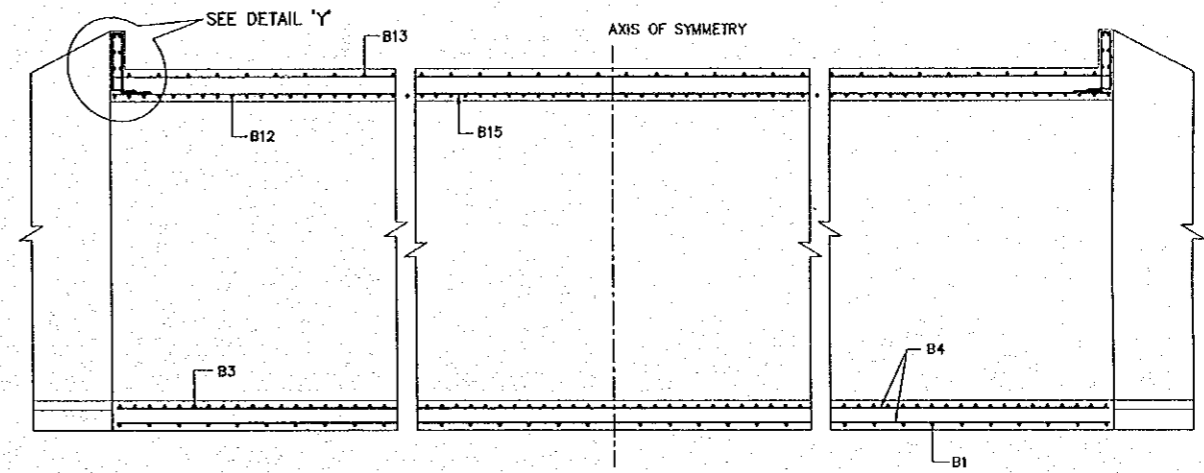
SHEET NO.
M-14



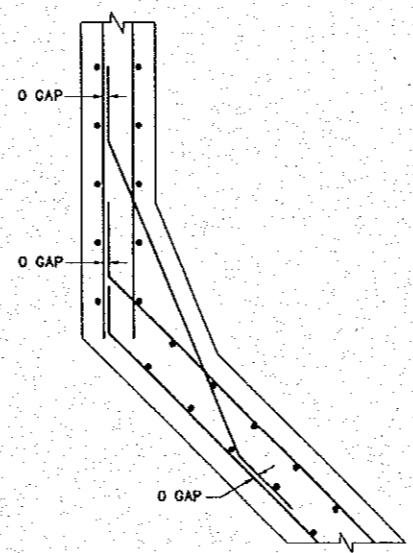
1 PART PLAN & SECTION
M-14 SCALE : 1:25



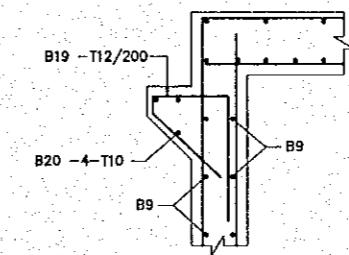
2 REINFORCEMENT DETAILS OF BOX
M-14 SCALE : 1:25



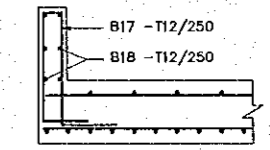
7 SECTION E-E
M-14 SCALE : 1:50



10 DETAIL 'Z'
M-14 SCALE : NOT TO SCALE



8 DETAIL 'X'
M-14 SCALE : NOT TO SCALE



9 DETAIL 'Y'
M-14 SCALE : NOT TO SCALE

NOTES:

- ALL DIMENSIONS ARE IN MILLIMETER UNLESS OTHERWISE SPECIFIED.
- NOT ALL REINFORCEMENT ARE NECESSARILY SHOWN IN ANY VIEW.
- CONCRETE GRADE ARE CLASS 25 FOR R.C.C. WORK AND CLASS 15 FOR LEVELLING WORK.
- REINFORCEMENT TO BE DEFORMED BAR TO AASHTO M31 (ASTM A615) GRADE 60.
- LAP LENGTHS HAVE BEEN CONSIDERED IN BAR BENDING SCHEDULE FOR ALL SPECIFIED PLACES USE FOLLOWING LAP LENGTH AS MINIMUM FOR ALL UNSPECIFIED PLACES.

BAR DIA	LAP LENGTH
25#	950mm
20#	650mm
16#	550mm
12#	400mm

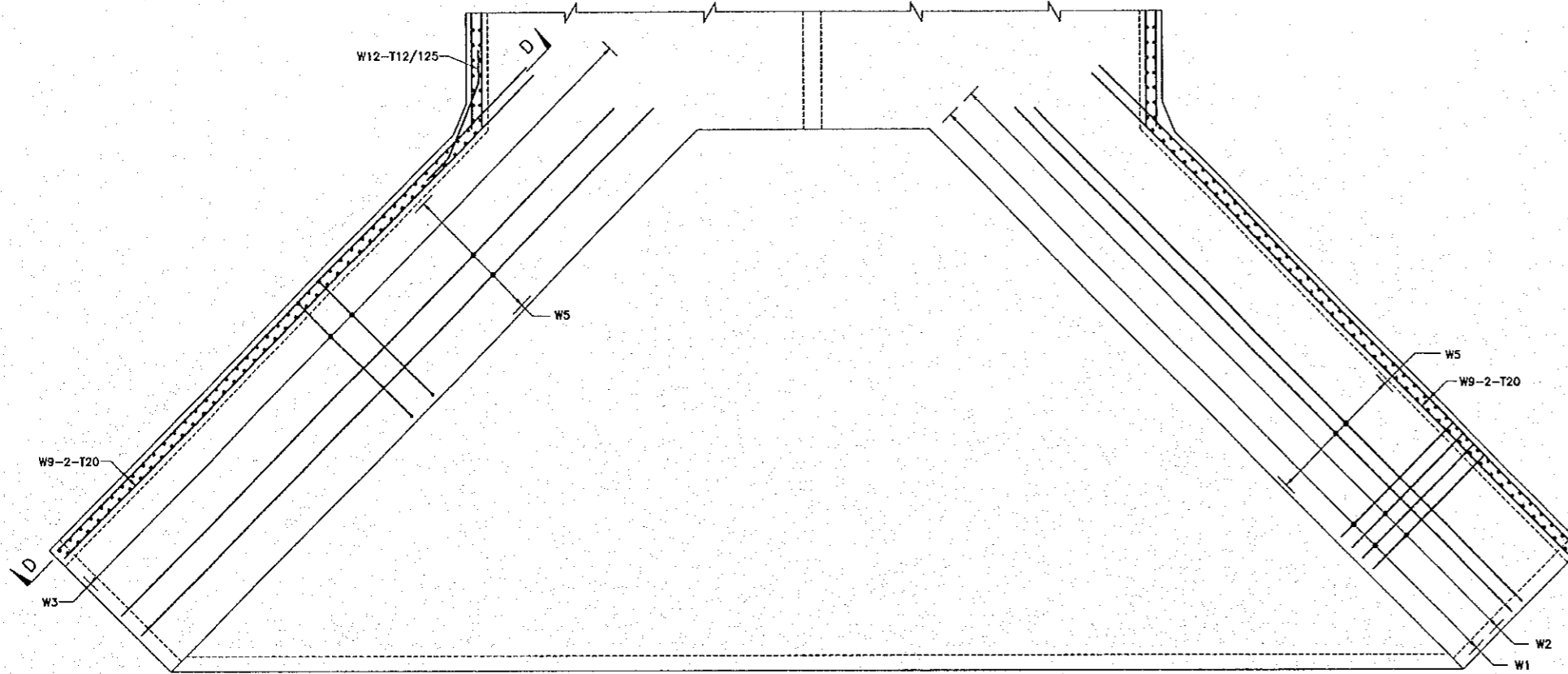
- CLEAR COVER OF REBARS :
TOP OF TOP SLAB : 50
BOTTOM OF TOP SLAB : 40
TOP & BOTTOM OF BOTTOM SLAB & WALLS : 65

- KEY TO REINFORCEMENT NOMENCLATURE
B6 - 8 - T12/250 NF
BAR MARK : LOCATION
QUANTITY : SPACING
BAR TYPE : BAR DIA.
T = GRADE 60 BARS
R = GRADE 40 BARS
ABBREVIATION: -
NF = NEAR FACE; FF = FAR FACE
STAGGNF = STAGGERED; ALT = ALTERNATE SPACING.

THE STUDY ON CONSTRUCTION OF THE BRIDGE
OVER THE RIVER RUPSA IN KHULNA (PHASE 2)

REINFORCEMENT DETAILS OF WING WALL
Karate Khal (STA. 5 + 436)

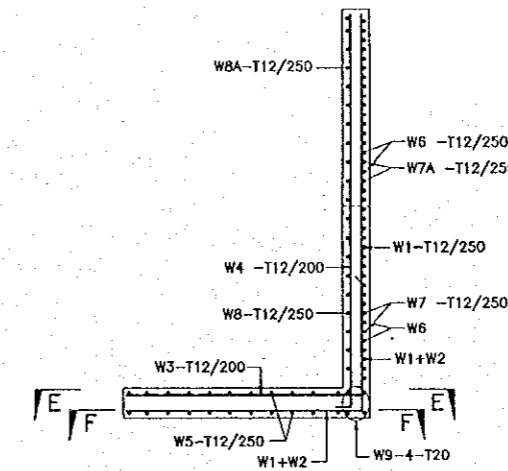
SCALE AS SHOWN SHEET NO. M-15



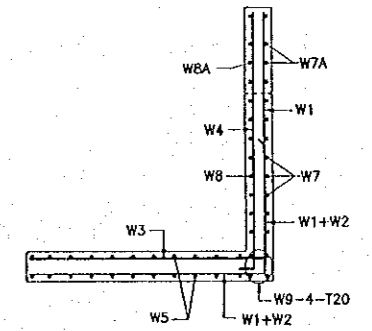
REINF. DETAIL OF WING WALL BASE
(SECTION E-E)

REINF. DETAIL OF WING WALL BASE
(SECTION F-F)

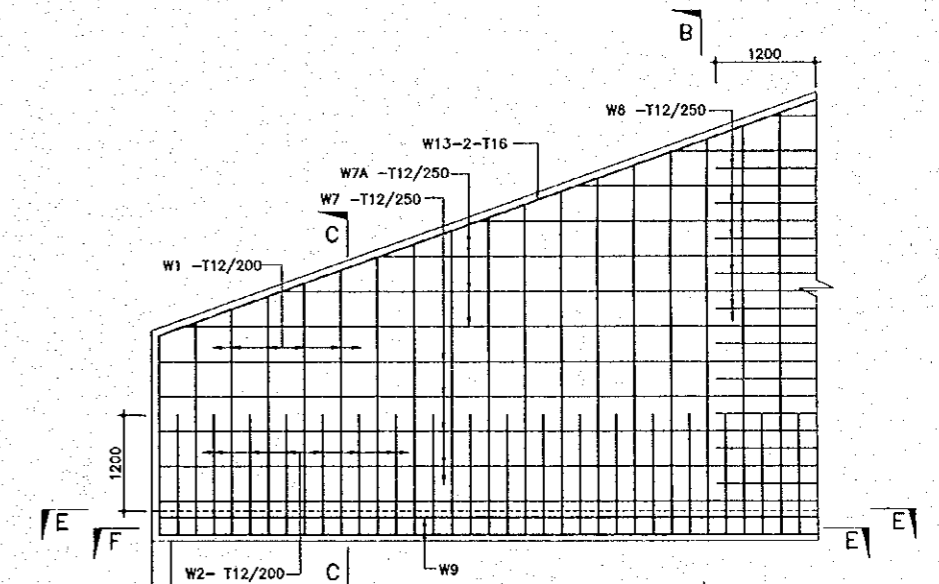
2 REINF. DETAIL OF WING WALL
SCALE : NOT TO SCALE



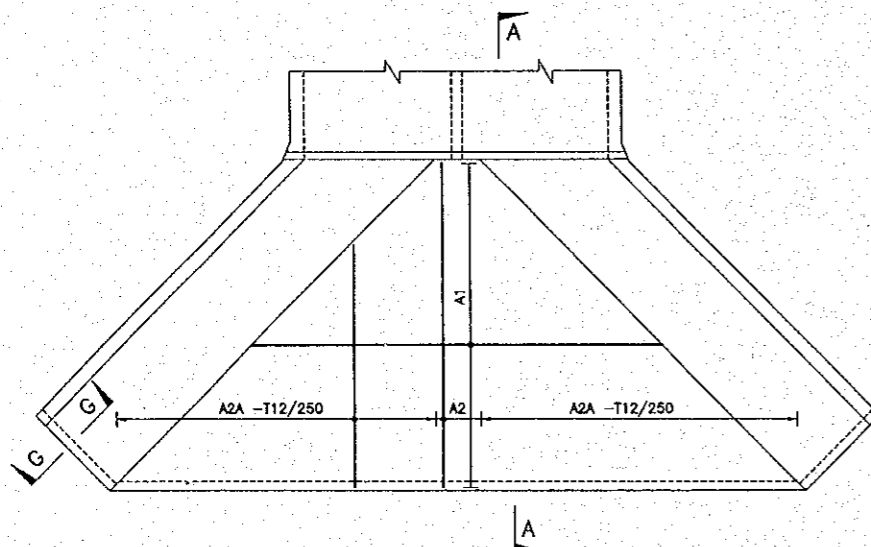
4 SECTION B-B
SCALE : NOT TO SCALE



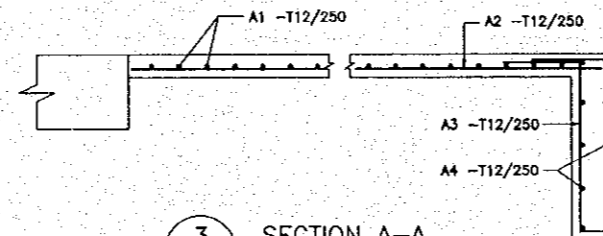
5 SECTION C-C
SCALE : NOT TO SCALE



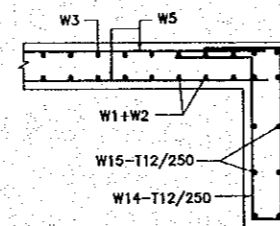
6 SECTION D-D
SCALE : NOT TO SCALE



1 REINF. DETAIL OF APRON & CUTOFF
SCALE 1:100



3 SECTION A-A
SCALE 1:20



7 SECTION G-G
SCALE 1:20

NOTES:

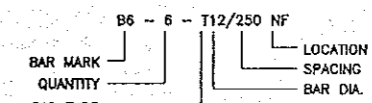
- ALL DIMENSIONS ARE IN MILLIMETER UNLESS OTHERWISE SPECIFIED.
- NOT ALL REINFORCEMENT ARE NECESSARILY SHOWN IN ANY VIEW.
- CONCRETE GRADE ARE CLASS 25 FOR R.C.C. WORK AND CLASS 15 FOR LEVELLING WORK.
- REINFORCEMENT TO BE DEFORMED BAR TO AASHTO M31 (ASTM A615) GRADE 60.
- LAP LENGTHS HAVE BEEN CONSIDERED IN BAR BENDING SCHEDULE FOR ALL SPECIFIED PLACES USE FOLLOWING LAP LENGTH AS MINIMUM FOR ALL UNSPECIFIED PLACES.

BAR DIA	LAP LENGTH
25#	950mm
20#	650mm
16#	550mm
12#	400mm

6. CLEAR COVER OF REBARS :

TOP OF TOP SLAB	: 50
BOTTOM OF TOP SLAB	: 40
TOP & BOTTOM OF BOTTOM SLAB & WALLS	: 65

7. KEY TO REINFORCEMENT NOMENCLATURE



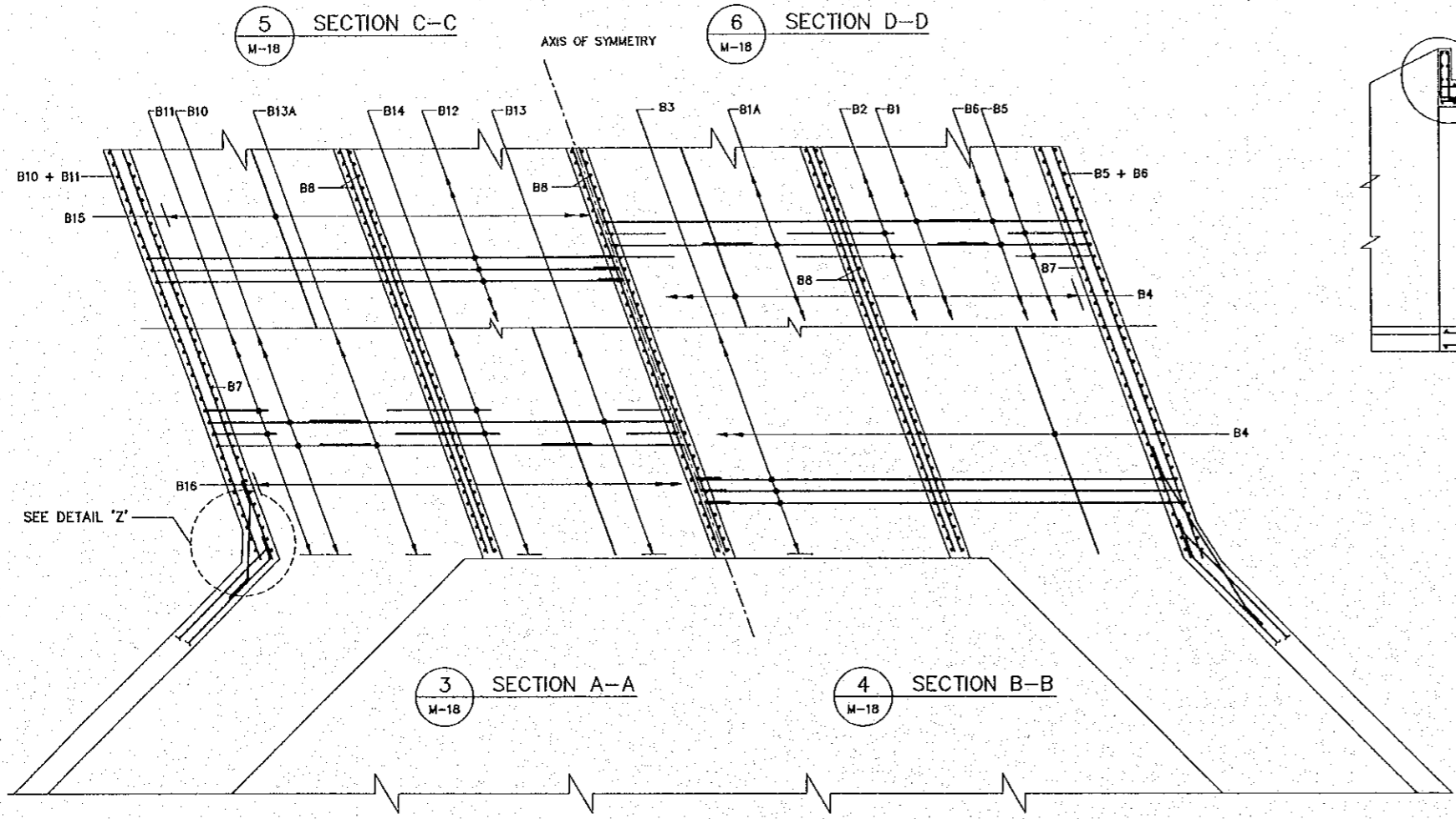
T = GRADE 60 BARS
R = GRADE 40 BARS

ABBREVIATION:-

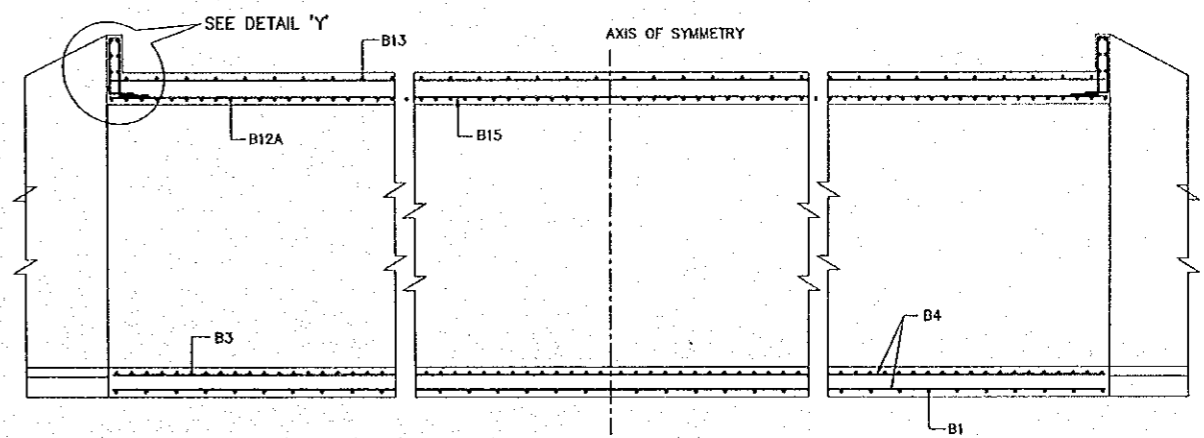
NF = NEAR FACE; FF = FAR FACE; STAG = STAGGERED
STAGCNF = STAGGERED; ALT = ALTERNATE SPACING.

THE STUDY ON CONSTRUCTION OF THE BRIDGE
OVER THE RIVER RUPSA IN KHULNA (PHASE 2)
REINFORCEMENT DETAILS OF BOX
Laurir Khai (STA. 5+643)

SCALE	SHEET NO.
AS SHOWN	M-18

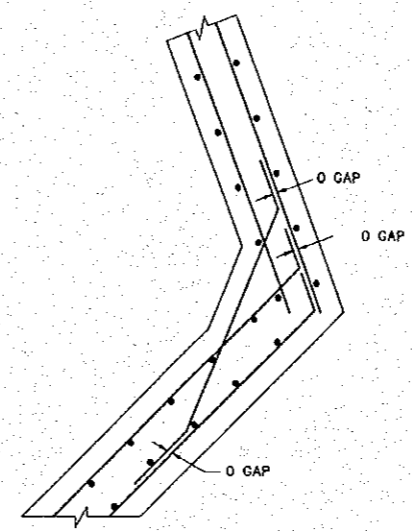


1 PART PLAN & SECTION
M-18 SCALE : 1:50

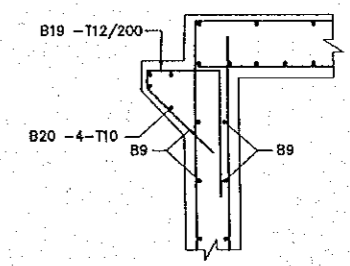


5 SECTION C-C
M-18

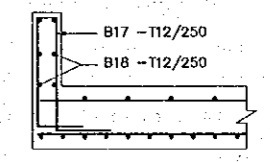
7 SECTION E-E
M-18 SCALE : 1:50



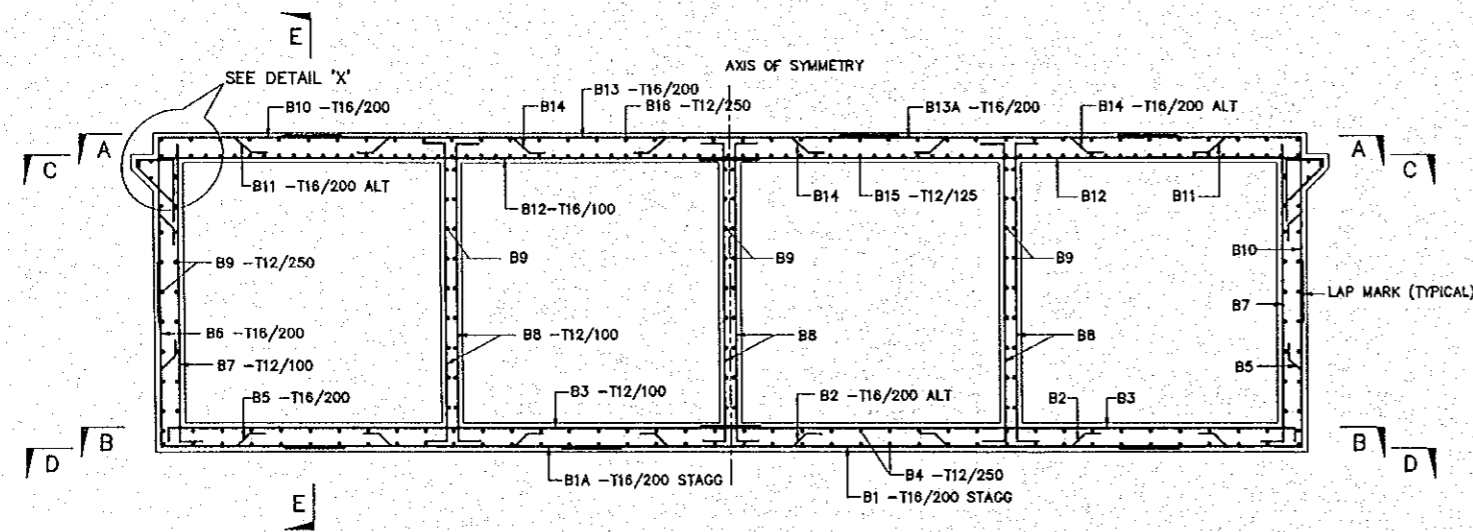
6 SECTION D-D
M-18



8 DETAIL 'X'
M-18 SCALE : NOT TO SCALE



9 DETAIL 'Y'
M-18 SCALE : NOT TO SCALE



2 REINFORCEMENT DETAILS OF BOX
M-18 SCALE : 1:50

10 DETAIL 'Z'
M-18 SCALE : NOT TO SCALE

NOTES:

- ALL DIMENSIONS ARE IN MILLIMETER UNLESS OTHERWISE SPECIFIED.
- NOT ALL REINFORCEMENT ARE NECESSARILY SHOWN IN ANY VIEW.
- CONCRETE GRADE ARE CLASS 25 FOR R.C.C. WORK AND CLASS 15 FOR LEVELLING WORK.
- REINFORCEMENT TO BE DEFORMED BAR TO AASHTO M31 (ASTM A615) GRADE 6D.
- LAP LENGTHS HAVE BEEN CONSIDERED IN BAR BENDING SCHEDULE FOR ALL SPECIFIED PLACES USE FOLLOWING LAP LENGTH AS MINIMUM FOR ALL UNSPECIFIED PLACES.

BAR DIA	LAP LENGTH
25#	950mm
20#	650mm
16#	550mm
12#	400mm

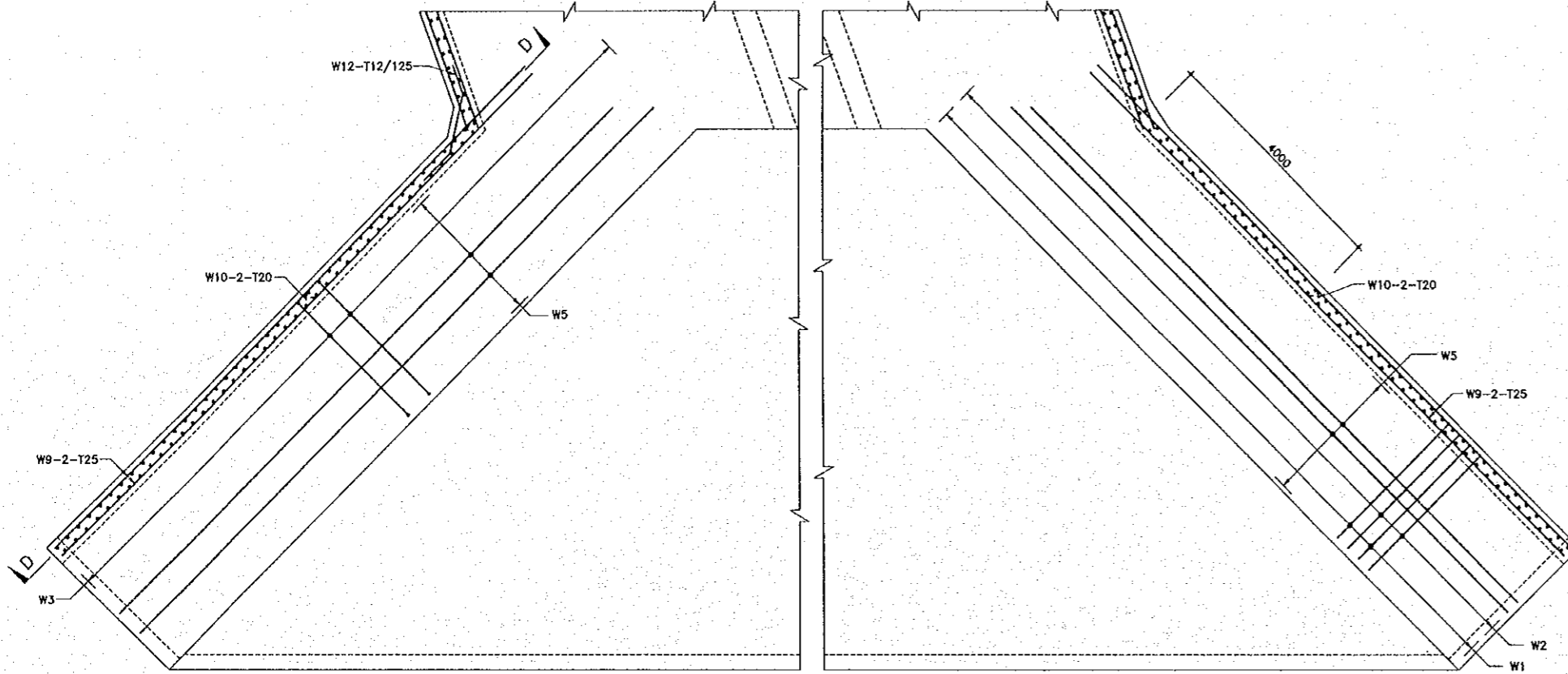
- CLEAR COVER OF REBARS :
TOP OF TOP SLAB : 50
BOTTOM OF TOP SLAB : 40
TOP & BOTTOM OF BOTTOM SLAB & WALLS : 65

- KEY TO REINFORCEMENT NOMENCLATURE
BAR MARK QUANTITY BAR TYPE
LOCATION SPACING BAR DIA.
T = GRADE 60 BARS
R = GRADE 40 BARS
ABBREVIATION: -
NF = NEAR FACE; FF = FAR FACE; STAGG = STAGGERED
STAGGNF = STAGGERED; ALT = ALTERNATE SPACING.

THE STUDY ON CONSTRUCTION OF THE BRIDGE
OVER THE RIVER RUPSA IN KHULNA (PHASE 2)

REINFORCEMENT DETAILS OF WING WALL
Laurir Khal (STA. 5 + 643)

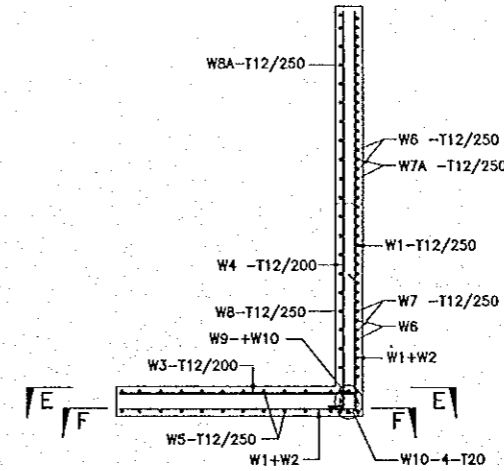
SCALE AS SHOWN SHEET NO. M-19



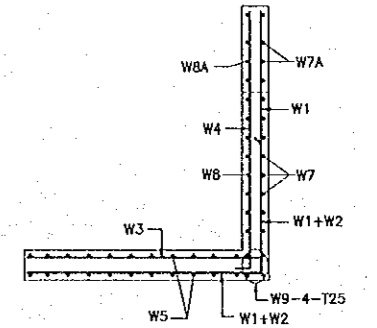
REINF. DETAIL OF WING WALL BASE
(SECTION E-E)

REINF. DETAIL OF WING WALL BASE
(SECTION F-F)

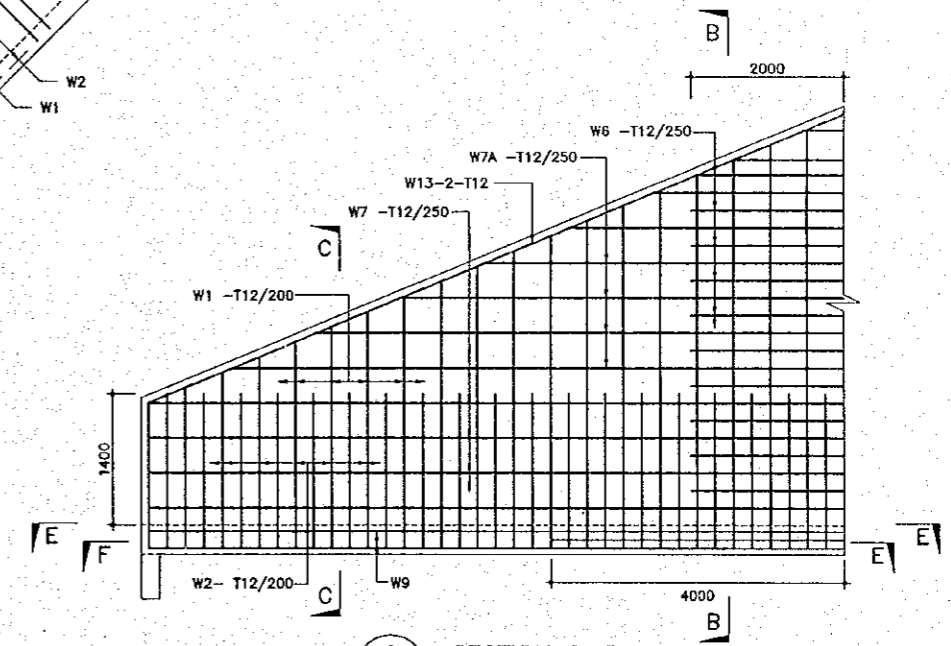
2 REINF. DETAIL OF WING WALL
SCALE : NOT TO SCALE



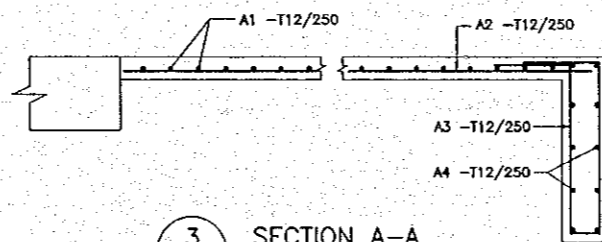
4 SECTION B-B
SCALE : NOT TO SCALE



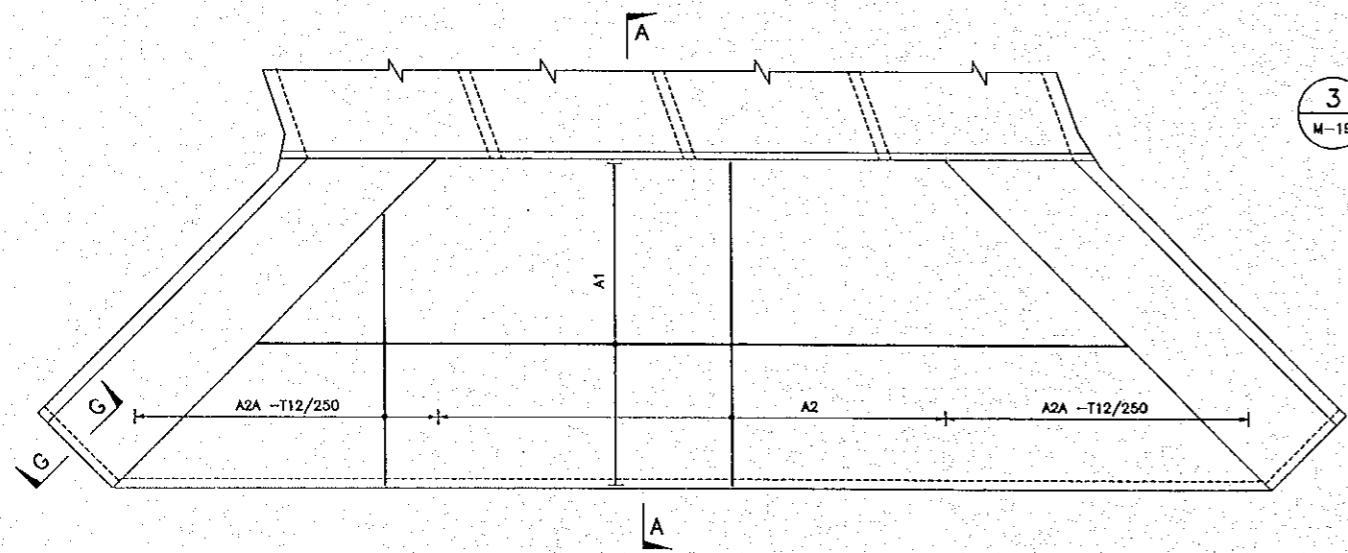
5 SECTION C-C
SCALE : NOT TO SCALE



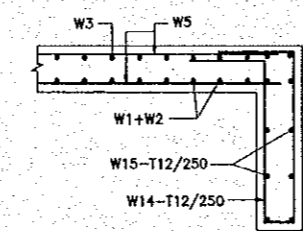
6 SECTION D-D
SCALE : NOT TO SCALE



3 SECTION A-A
SCALE 1:20



1 REINF. DETAIL OF APRON & CUTOFF
SCALE 1:100



7 SECTION G-G
SCALE 1:20

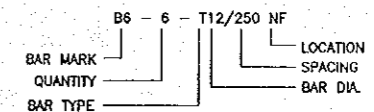
NOTES:

- ALL DIMENSIONS ARE IN MILLIMETER UNLESS OTHERWISE SPECIFIED.
- NOT ALL REINFORCEMENT ARE NECESSARILY SHOWN IN ANY VIEW.
- CONCRETE GRADE ARE CLASS 25 FOR R.C.C. WORK AND CLASS 15 FOR LEVELLING WORK.
- REINFORCEMENT TO BE DEFORMED BAR TO AASHTO M31 (ASTM A615) GRADE 60.
- LAP LENGTHS HAVE BEEN CONSIDERED IN BAR BENDING SCHEDULE FOR ALL SPECIFIED PLACES USE FOLLOWING LAP LENGTH AS MINIMUM FOR ALL UNSPECIFIED PLACES.

BAR DIA	LAP LENGTH
25#	950mm
20#	650mm
16#	550mm
12#	400mm

- CLEAR COVER OF REBARS :
TOP OF TOP SLAB : 50
BOTTOM OF TOP SLAB : 40
TOP & BOTTOM OF BOTTOM SLAB & WALLS : 65

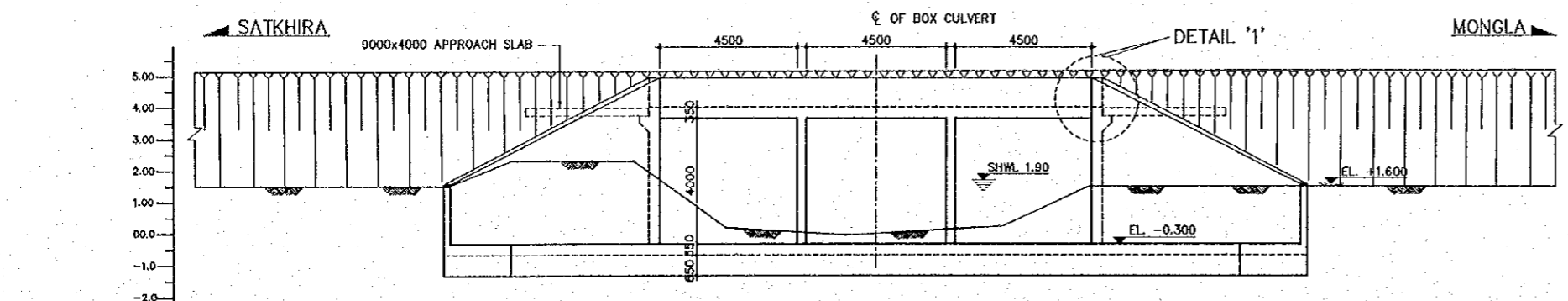
7. KEY TO REINFORCEMENT NOMENCLATURE



T = GRADE 60 BARS
R = GRADE 40 BARS
ABBREVIATION:-
NF = NEAR FACE; FF = FAR FACE; STAG = STAGGERED
STAGGNF = STAGGERED; ALT = ALTERNATE SPACING.

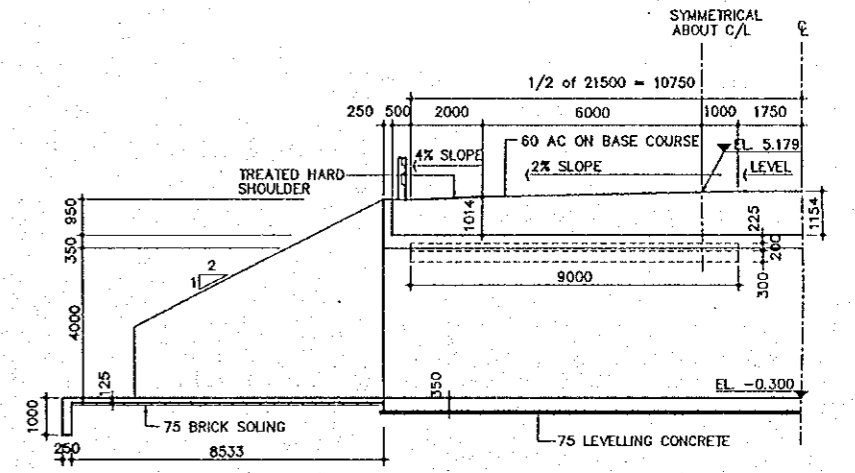
THE STUDY ON CONSTRUCTION OF THE BRIDGE
OVER THE RIVER RUPSA IN KHULNA (PHASE 2)
GENERAL ARRANGEMENT OF BOX CULVERT
Moyur Khal (STA. 5+882)

SCALE AS SHOWN
SHEET NO. M-21

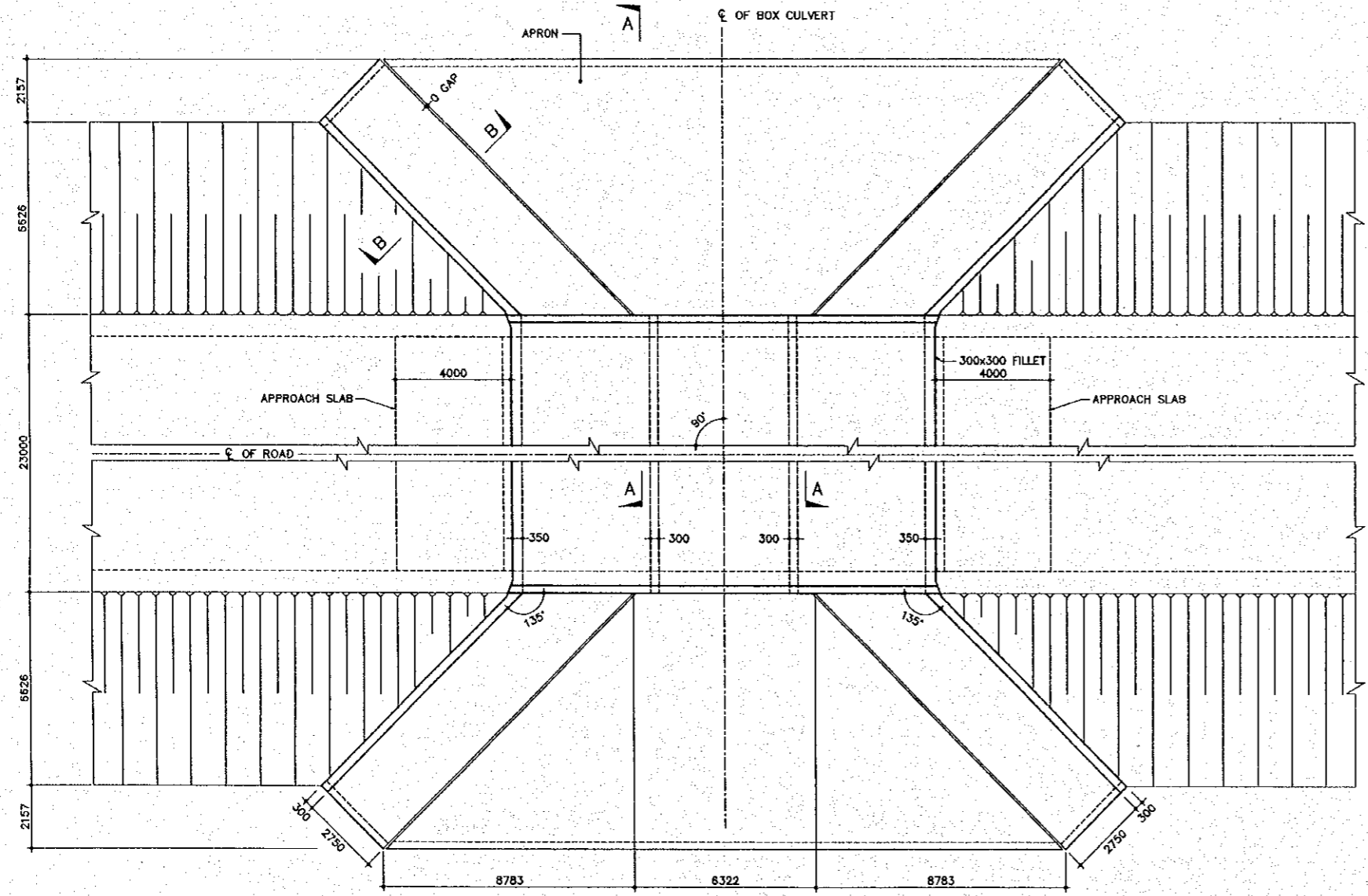


Datum Line	-3.000 (m)						
LONGITUDINAL GRADE	0.26%						
PROPOSED HT.							
GROUND HT.	1.110	2.214	2.304	0.182	0.000	0.230	1.136
DISTANCE							
STATION	5+868	5+870	5+871	5+877	5+882.5	5+888	5+888

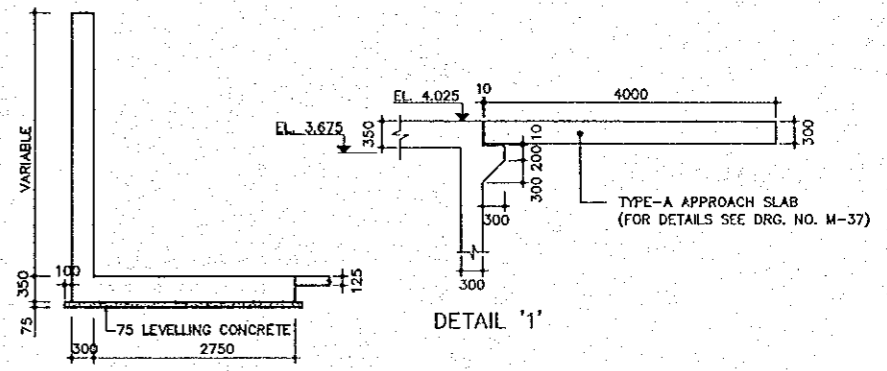
2 GENERAL ELEVATION AT C/L
M-21 SCALE 1:100



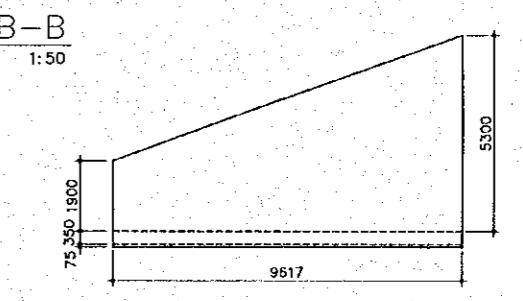
3 SECTION A-A
M-21 SCALE 1:100



1 PART PLAN
M-21 SCALE 1:100



4 SECTION B-B
M-21 SCALE 1:50

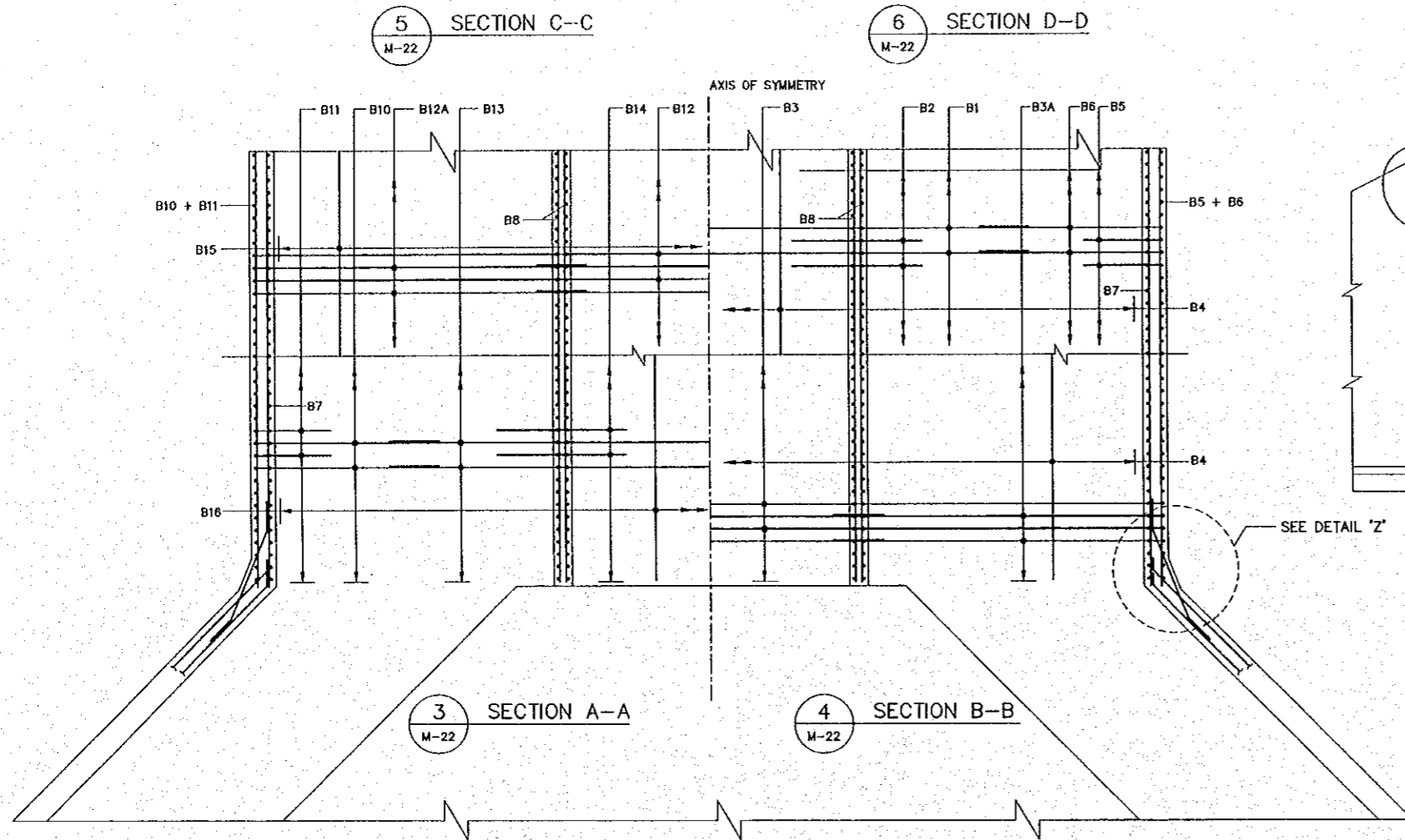


5 ELEVATION OF WING WALL AT WATER SIDE
M-21 SCALE 1:100

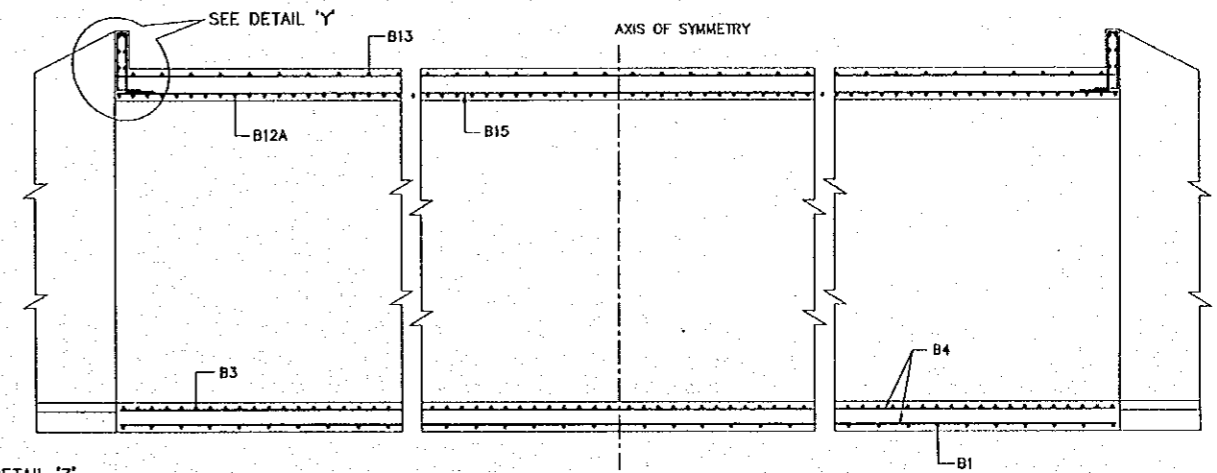
- NOTES:
1. ALL DIMENSIONS ARE IN MILLIMETER UNLESS OTHERWISE SPECIFIED.
 2. THIS DRAWING TO BE READ IN CONJUNCTION WITH DRG. NO. M-22, M-23, M-24 & M-37.
 3. ALL ELEVATIONS ARE IN P.W.D. meter.
 4. PROVISION SHOULD BE KEPT OVER DECK FOR PLACEMENT OF GUARD RAIL.

THE STUDY ON CONSTRUCTION OF THE BRIDGE
OVER THE RIVER RUPSA IN KHULNA (PHASE 2)
REINFORCEMENT DETAILS OF BOX
Moyur Khal (STA. 5+882)

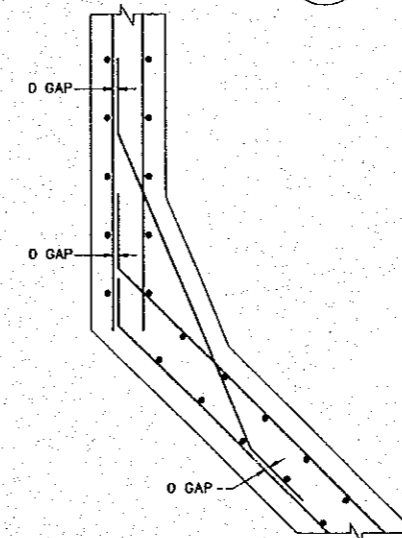
SCALE AS SHOWN SHEET NO. M-22



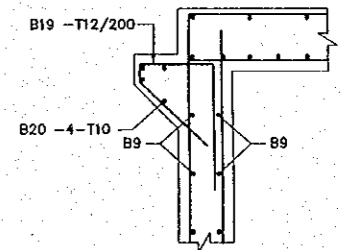
1 PART PLAN & SECTION
M-22 SCALE: 1:50



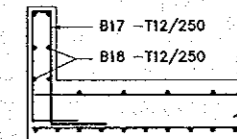
7 SECTION E-E
M-22 SCALE: 1:50



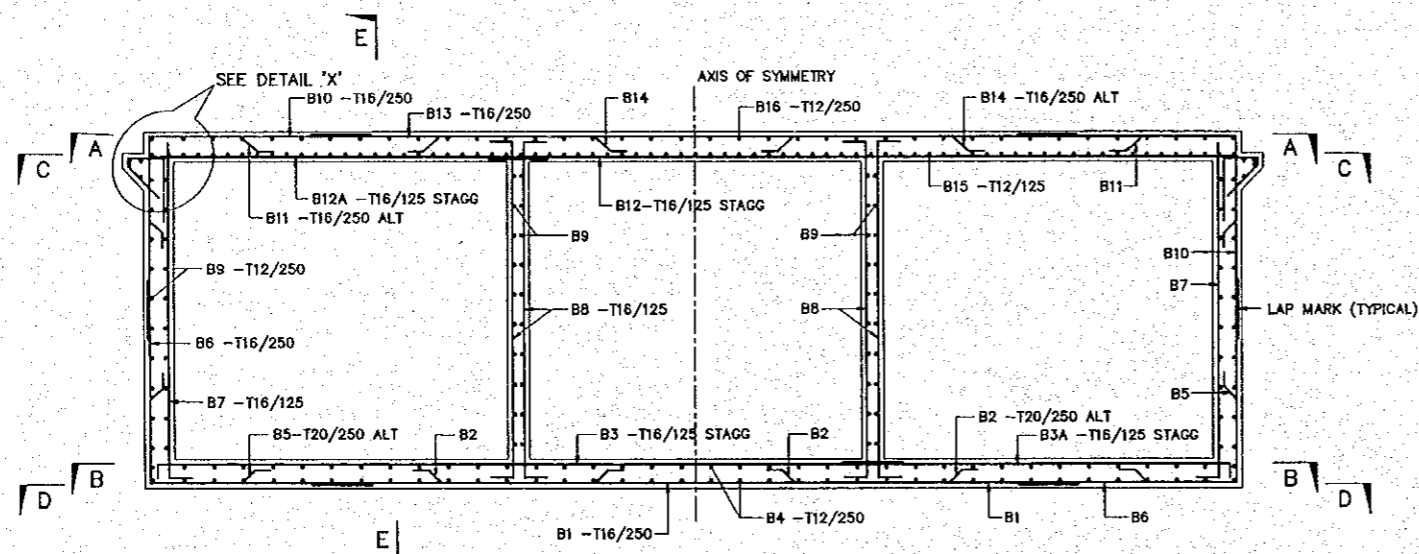
10 DETAIL 'Z'
M-22 SCALE: NOT TO SCALE



8 DETAIL 'X'
M-22 SCALE: NOT TO SCALE



9 DETAIL 'Y'
M-22 SCALE: NOT TO SCALE



2 REINFORCEMENT DETAILS OF BOX
M-22 SCALE: 1:50

NOTES:

- ALL DIMENSIONS ARE IN MILLIMETER UNLESS OTHERWISE SPECIFIED.
- NOT ALL REINFORCEMENT ARE NECESSARILY SHOWN IN ANY VIEW.
- CONCRETE GRADE ARE CLASS 25 FOR R.C.C. WORK AND CLASS 15 FOR LEVELLING WORK.
- REINFORCEMENT TO BE DEFORMED BAR TO AASHTO M31 (ASTM A615) GRADE 60.
- LAP LENGTHS HAVE BEEN CONSIDERED IN BAR BENDING SCHEDULE FOR ALL SPECIFIED PLACES USE FOLLOWING LAP LENGTH AS MINIMUM FOR ALL UNSPECIFIED PLACES.

BAR DIA	LAP LENGTH
25#	950mm
20#	650mm
16#	550mm
12#	400mm

- CLEAR COVER OF REBARS :
TOP OF TOP SLAB : 50
BOTTOM OF TOP SLAB : 40
TOP & BOTTOM OF BOTTOM SLAB & WALLS : 65

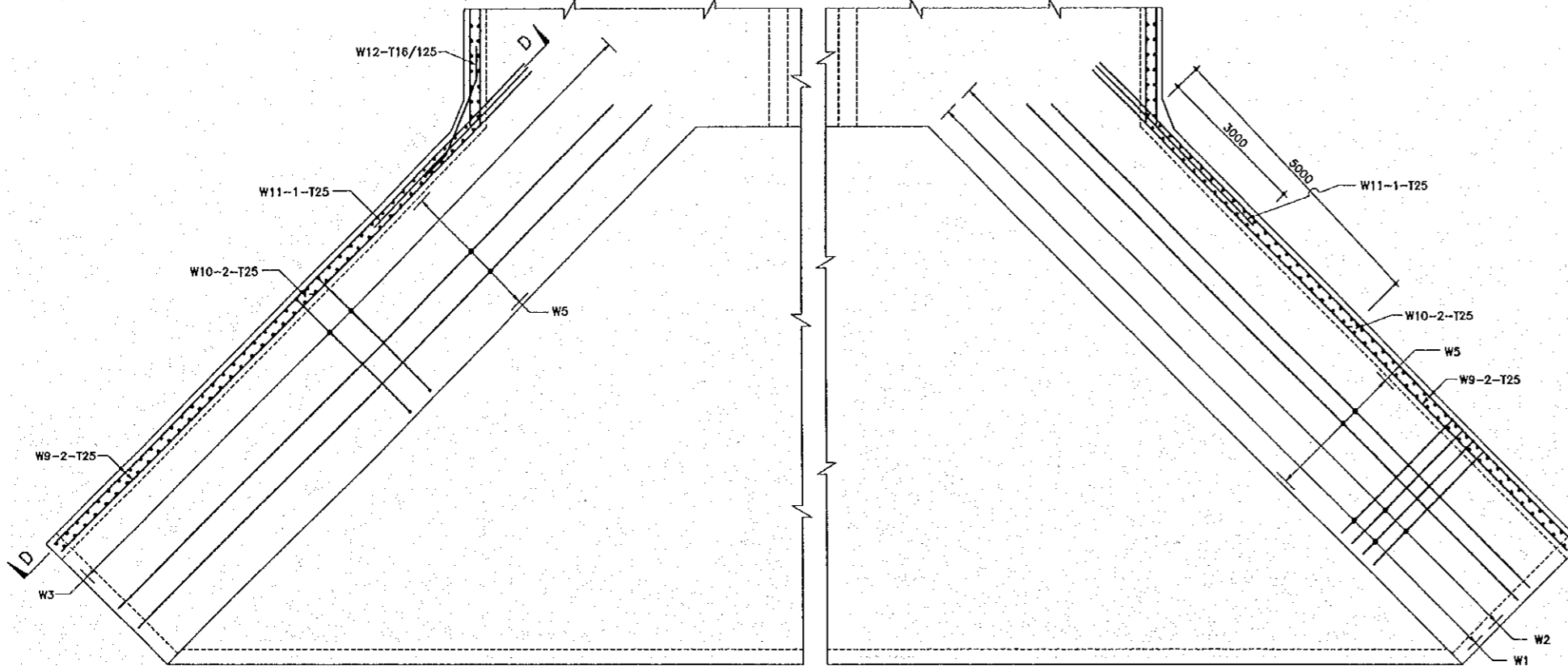
7. KEY TO REINFORCEMENT NOMENCLATURE

- B6 - 6 - T12/250 NF
- BAR MARK QUANTITY BAR TYPE
- LOCATION SPACING BAR DIA.
- T = GRADE 60 BARS
R = GRADE 40 BARS
- ABBREVIATION:-
NF = NEAR FACE; FF = FAR FACE; STAGG = STAGGERED
STAGGNF = STAGGERED; ALT = ALTERNATE SPACING.

THE STUDY ON CONSTRUCTION OF THE BRIDGE
OVER THE RIVER RUPSA IN KHULNA (PHASE 2)

REINFORCEMENT DETAILS OF WING WALL
Moyur Khal (STA. 5+882)

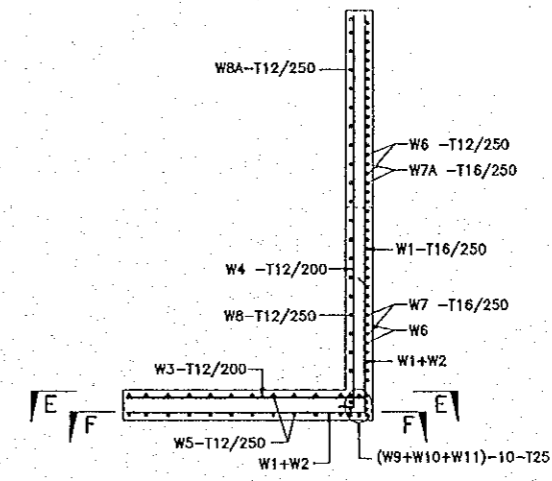
SCALE AS SHOWN SHEET NO. M-23



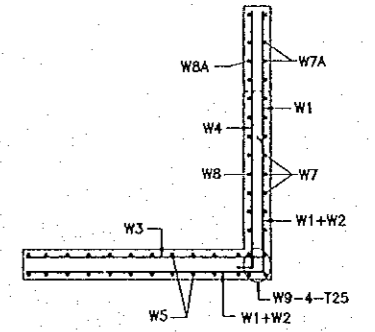
REINF. DETAIL OF WING WALL BASE
(SECTION E-E)

REINF. DETAIL OF WING WALL BASE
(SECTION F-F)

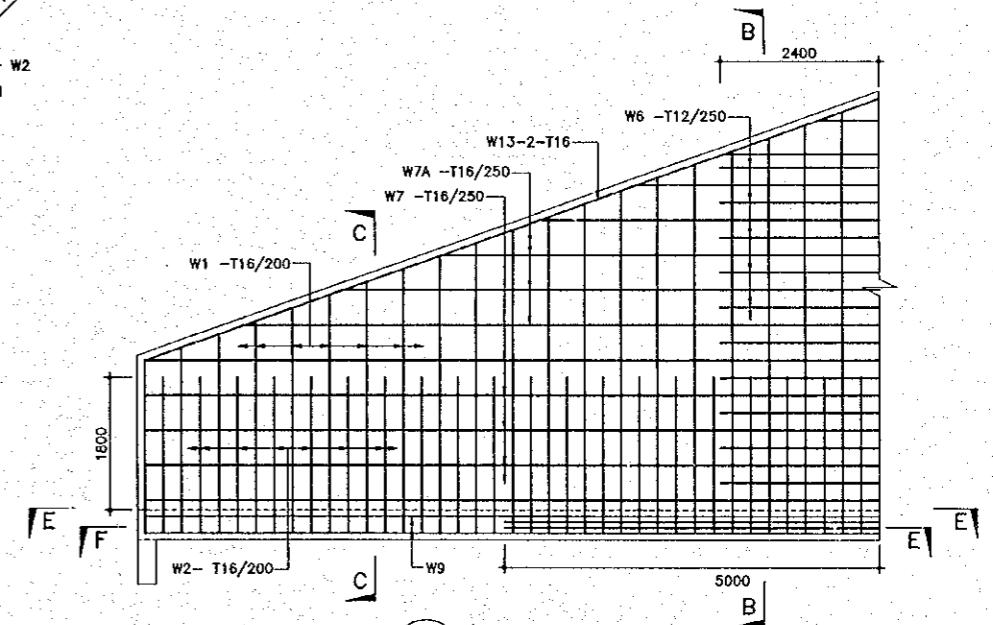
2 REINF. DETAIL OF WING WALL
M-23 SCALE : NOT TO SCALE



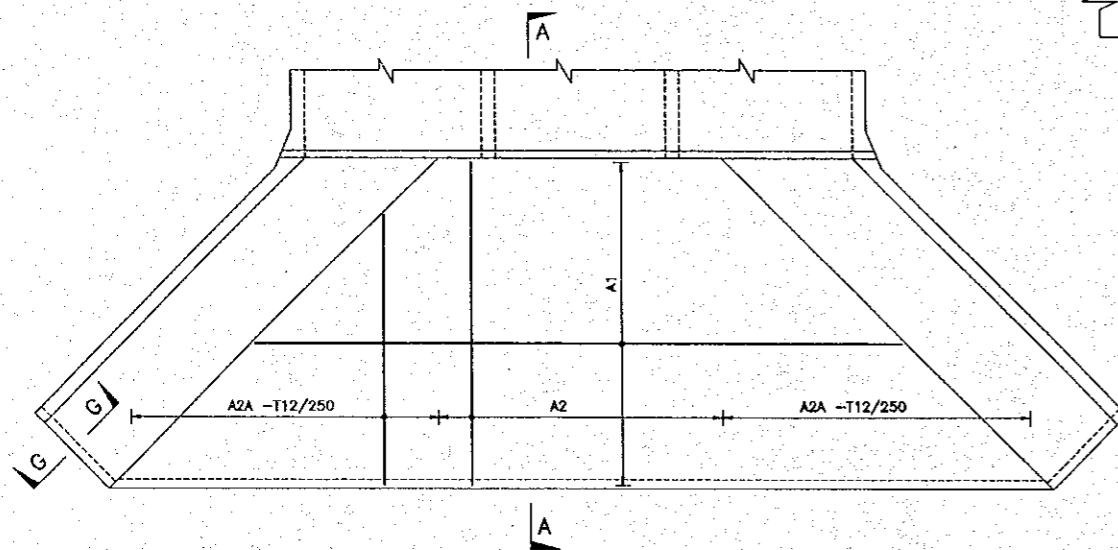
4 SECTION B-B
M-23 SCALE : NOT TO SCALE



5 SECTION C-C
M-23 SCALE : NOT TO SCALE

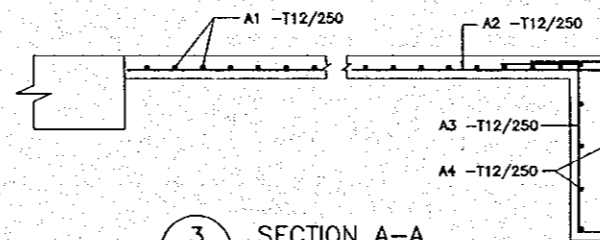


6 SECTION D-D
M-23 SCALE : NOT TO SCALE



3 SECTION A-A
M-23 SCALE 1:20

1 REINF. DETAIL OF APRON & CUTOFF
M-23 SCALE 1:100



7 SECTION G-G
M-23 SCALE 1:20

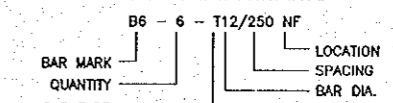
NOTES:

- ALL DIMENSIONS ARE IN MILLIMETER UNLESS OTHERWISE SPECIFIED.
- NOT ALL REINFORCEMENT ARE NECESSARILY SHOWN IN ANY VIEW.
- CONCRETE GRADE ARE CLASS 25 FOR R.C.C. WORK AND CLASS 15 FOR LEVELLING WORK.
- REINFORCEMENT TO BE DEFORMED BAR TO AASHTO M31 (ASTM A615) GRADE 60.
- LAP LENGTHS HAVE BEEN CONSIDERED IN BAR BENDING SCHEDULE FOR ALL SPECIFIED PLACES USE FOLLOWING LAP LENGTH AS MINIMUM FOR ALL UNSPECIFIED PLACES.

BAR DIA	LAP LENGTH
25#	950mm
20#	650mm
18#	550mm
12#	400mm

- CLEAR COVER OF REBARS :
TOP OF TOP SLAB : 50
BOTTOM OF TOP SLAB : 40
TOP & BOTTOM OF BOTTOM SLAB & WALLS : 65

7. KEY TO REINFORCEMENT NOMENCLATURE

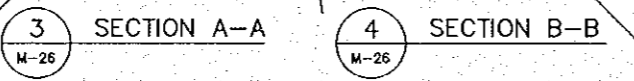
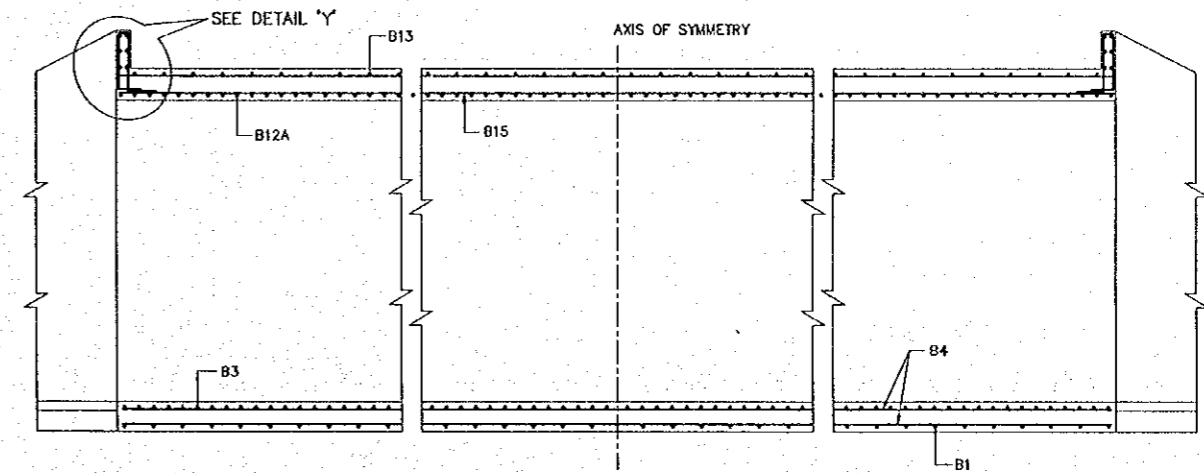
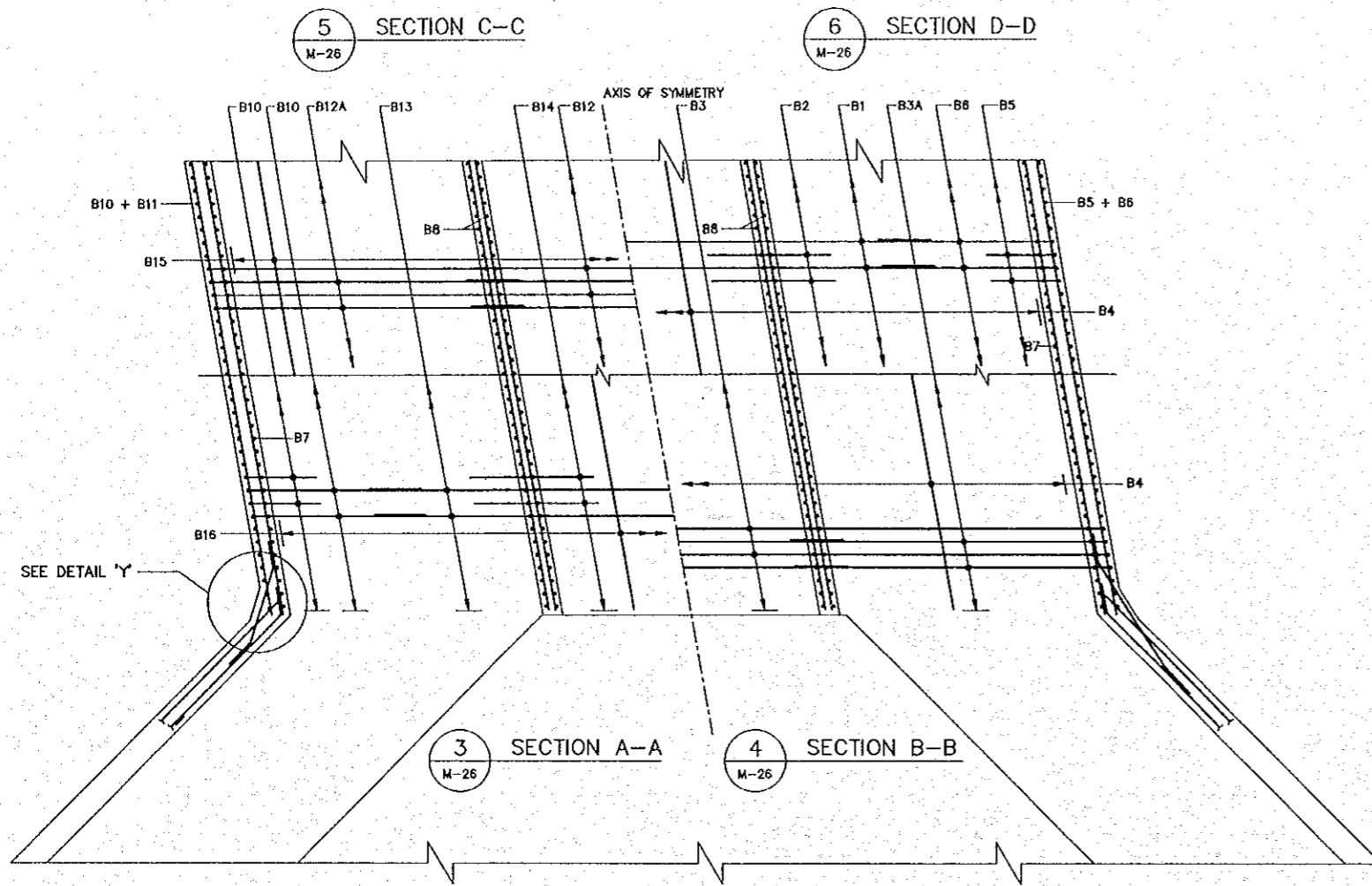


- ABBREVIATION:-
NF = NEAR FACE; FF = FAR FACE
STAGGNF = STAGGERED; ALT = ALTERNATE SPACING.

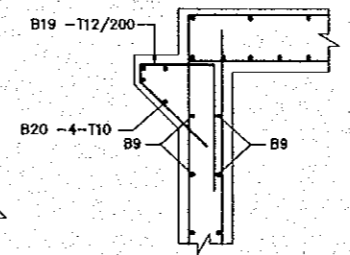
THE STUDY ON CONSTRUCTION OF THE BRIDGE
OVER THE RIVER RUPSA IN KHULNA (PHASE 2)

REINFORCEMENT DETAILS OF BOX
Khetra Khal (STA. 6+266)

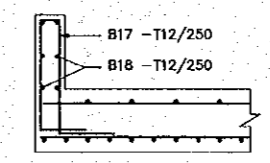
SCALE	SHEET NO.
AS SHOWN	M-26



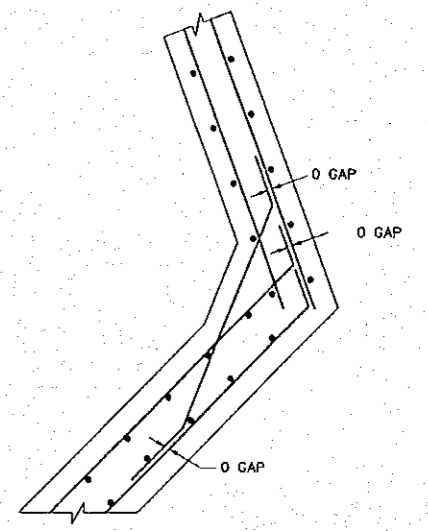
1 PART PLAN & SECTION
SCALE: 1:50



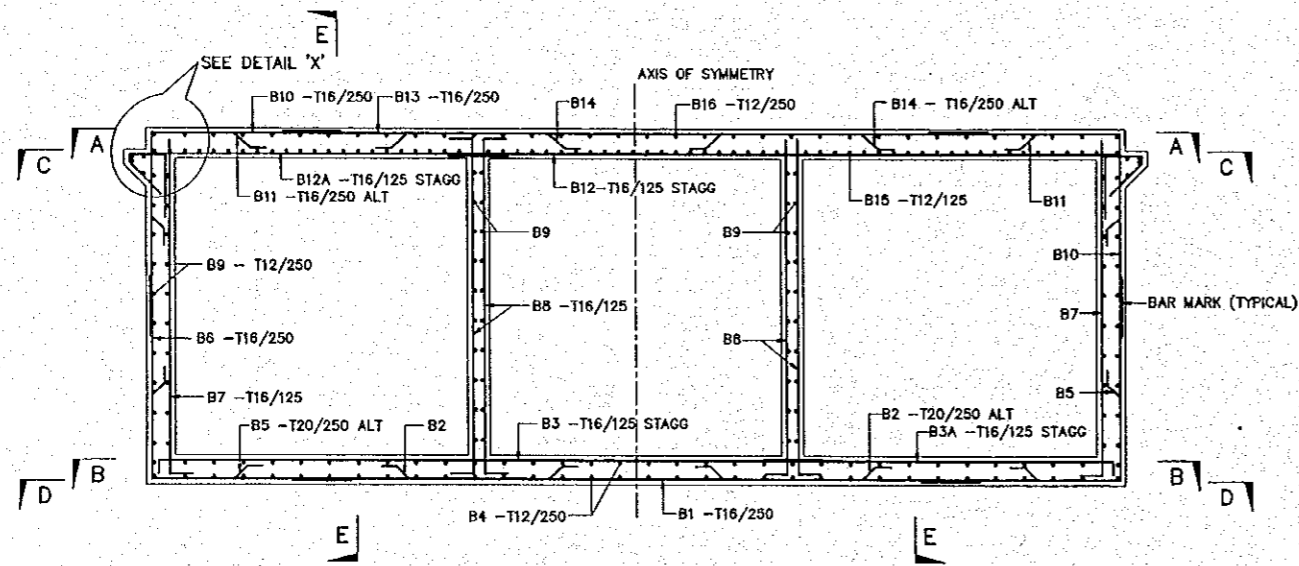
8 DETAIL 'X'
SCALE: NOT TO SCALE



9 DETAIL 'Y'
SCALE: NOT TO SCALE



10 DETAIL 'Z'
SCALE: NOT TO SCALE



2 REINFORCEMENT DETAILS OF BOX
SCALE: 1:50

NOTES:

- ALL DIMENSIONS ARE IN MILLIMETER UNLESS OTHERWISE SPECIFIED.
- NOT ALL REINFORCEMENT ARE NECESSARILY SHOWN IN ANY VIEW.
- CONCRETE GRADE ARE CLASS 25 FOR R.C.C. WORK AND CLASS 15 FOR LEVELLING WORK.
- REINFORCEMENT TO BE DEFORMED BAR TO AASHTO M31 (ASTM A615) GRADE 60.
- LAP LENGTHS HAVE BEEN CONSIDERED IN BAR BENDING SCHEDULE FOR ALL SPECIFIED PLACES USE FOLLOWING LAP LENGTH AS MINIMUM FOR ALL UNSPECIFIED PLACES.

BAR DIA	LAP LENGTH
25#	950mm
20#	650mm
16#	550mm
12#	400mm

- CLEAR COVER OF REBARS :
TOP OF TOP SLAB : 50
BOTTOM OF TOP SLAB : 40
TOP & BOTTOM OF BOTTOM SLAB & WALLS : 65

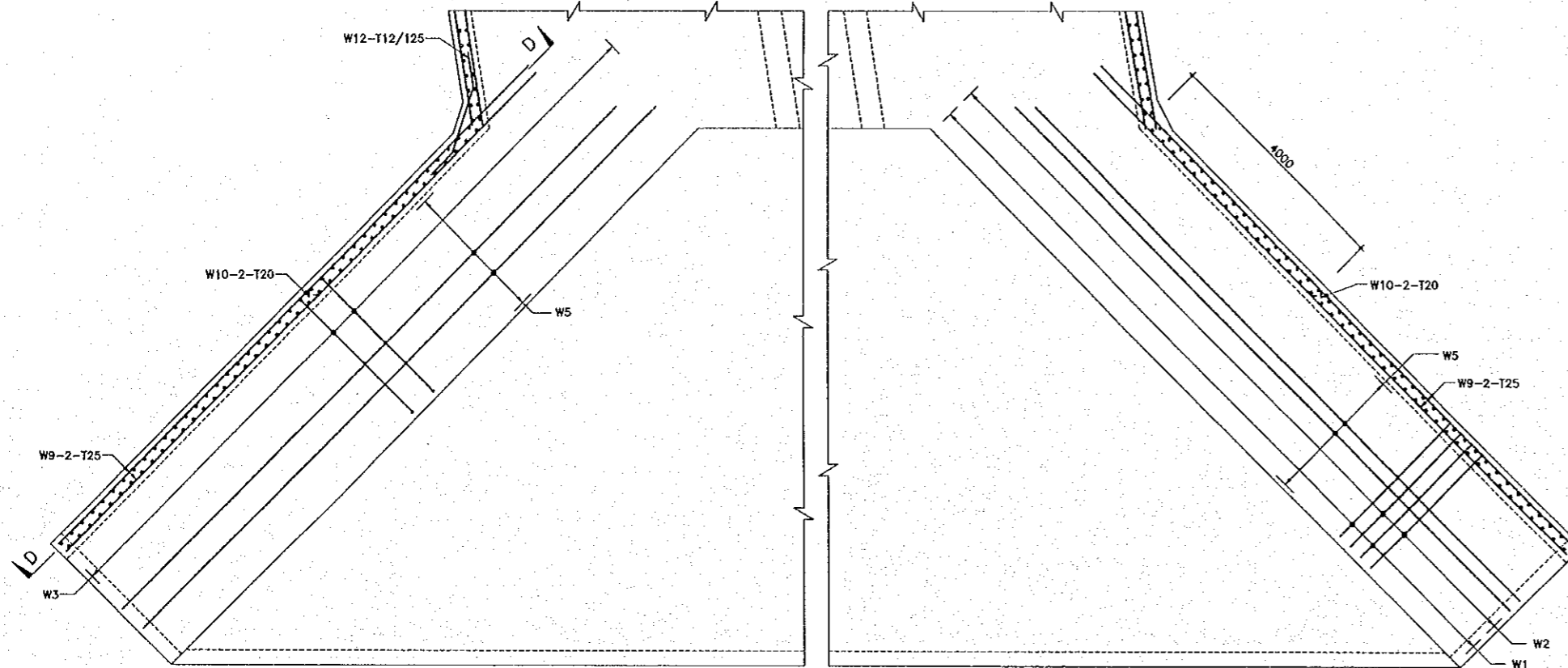
7. KEY TO REINFORCEMENT NOMENCLATURE

- BB - 6 - T12/250 NF
BAR MARK QUANTITY BAR TYPE LOCATION SPACING BAR DIA.
- T = GRADE 60 BARS
R = GRADE 40 BARS
ABBREVIATION:-
NF = NEAR FACE; FF = FAR FACE
STAGG = STAGGERED; ALT = ALTERNATE SPACING.

THE STUDY ON CONSTRUCTION OF THE BRIDGE
OVER THE RIVER RUPSA IN KHULNA (PHASE 2)

REINFORCEMENT DETAILS OF WING WALL
Khetra Khal (STA. 6 + 266)

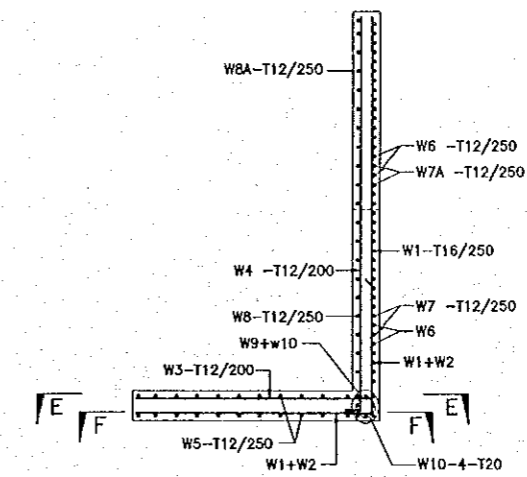
SCALE AS SHOWN SHEET NO. M-27



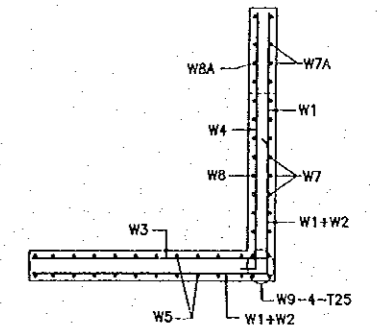
REINF. DETAIL OF WING WALL BASE
(SECTION E-E)

REINF. DETAIL OF WING WALL BASE
(SECTION F-F)

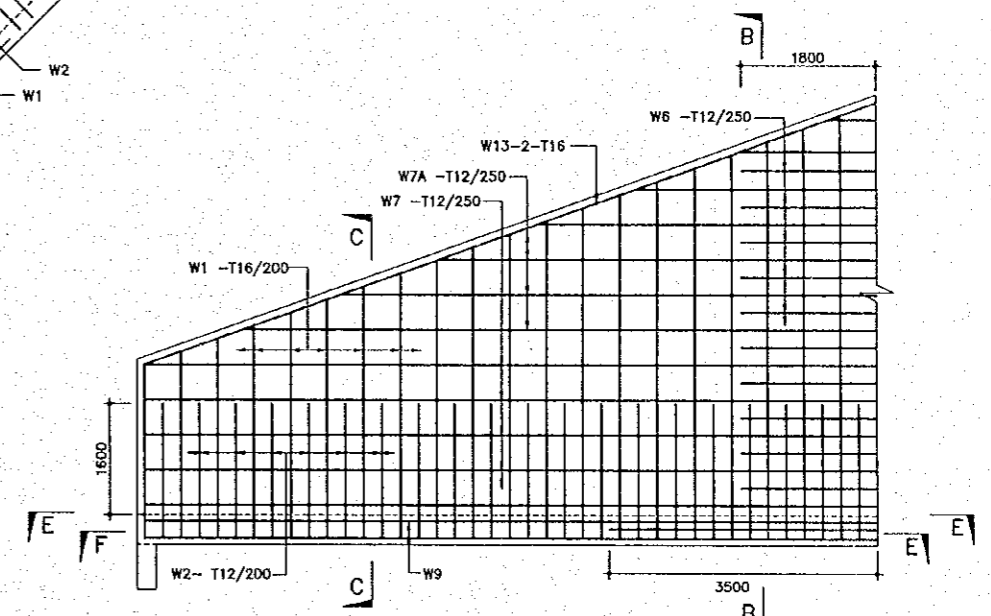
2 REINF. DETAIL OF WING WALL
SCALE : NOT TO SCALE



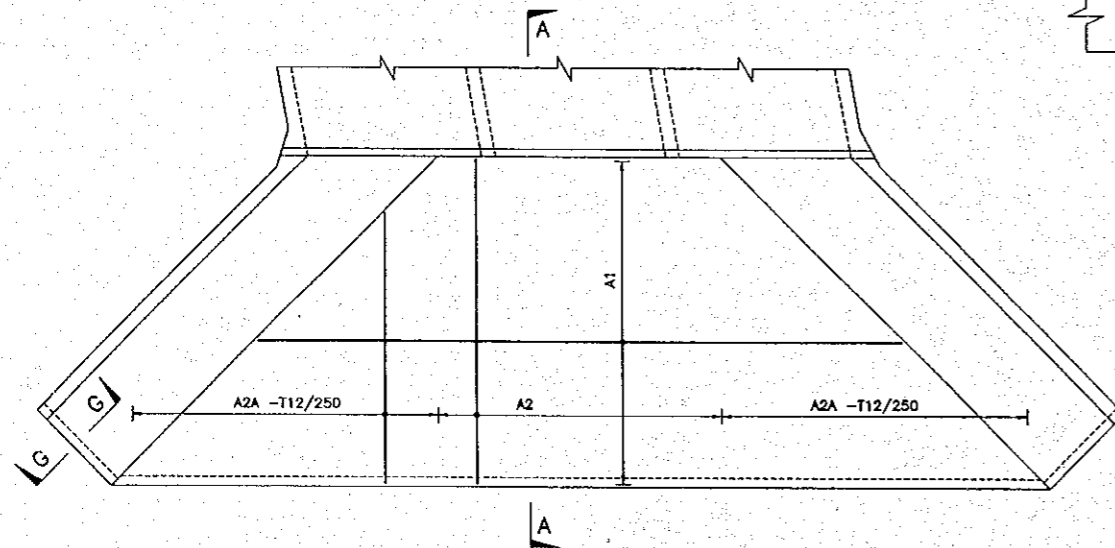
4 SECTION B-B
SCALE : NOT TO SCALE



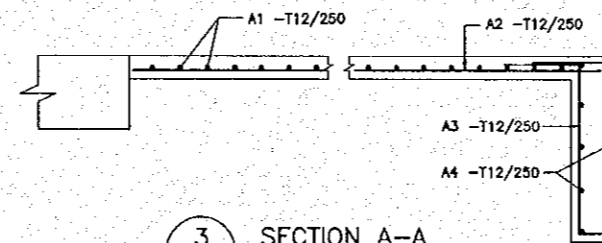
5 SECTION C-C
SCALE : NOT TO CSALE



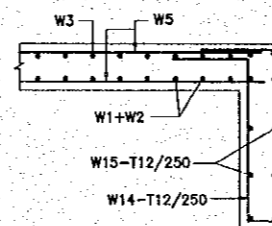
6 SECTION D-D
SCALE : NOT TO SCALE



1 REINF. DETAIL OF APRRON & CUTOFF
SCALE 1:100



3 SECTION A-A
SCALE 1:20



7 SECTION G-G
SCALE 1:20

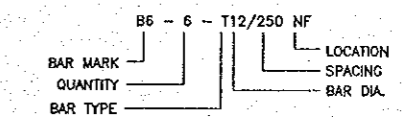
NOTES:

- ALL DIMENSIONS ARE IN MILLIMETER UNLESS OTHERWISE SPECIFIED.
- NOT ALL REINFORCEMENT ARE NECESSARILY SHOWN IN ANY VIEW.
- CONCRETE GRADE ARE CLASS 25 FOR R.C.C. WORK AND CLASS 15 FOR LEVELLING WORK.
- REINFORCEMENT TO BE DEFORMED BAR TO AASHTO M31 (ASTM A615) GRADE 60.
- LAP LENGTHS HAVE BEEN CONSIDERED IN BAR BENDING SCHEDULE FOR ALL SPECIFIED PLACES USE FOLLOWING LAP LENGTH AS MINIMUM FOR ALL UNSPECIFIED PLACES.

BAR DIA	LAP LENGTH
25#	950mm
20#	650mm
16#	550mm
12#	400mm

- CLEAR COVER OF REBARS :
TOP OF TOP SLAB : 50
BOTTOM OF TOP SLAB : 40
TOP & BOTTOM OF BOTTOM SLAB & WALLS : 65

7. KEY TO REINFORCEMENT NOMENCLATURE



- ABBREVIATION:-
NF = NEAR FACE; FF = FAR FACE
STAG = STAGGERED; ALT = ALTERNATE SPACING.