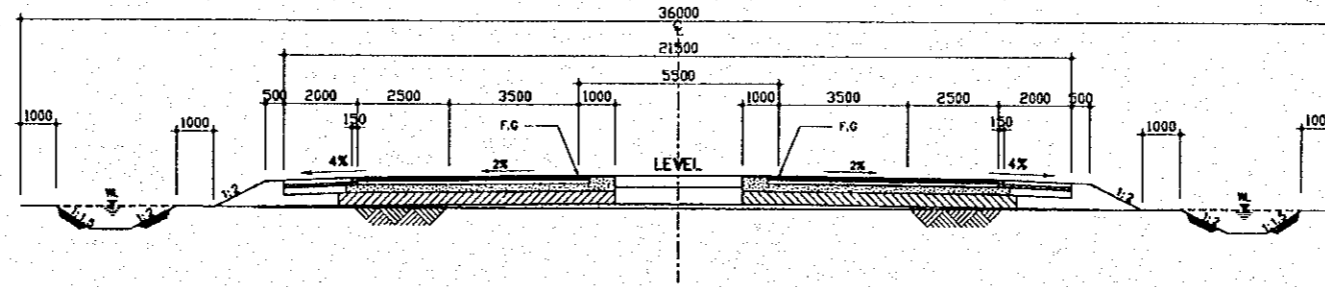


# **C. TYPICAL CROSS SECTION**

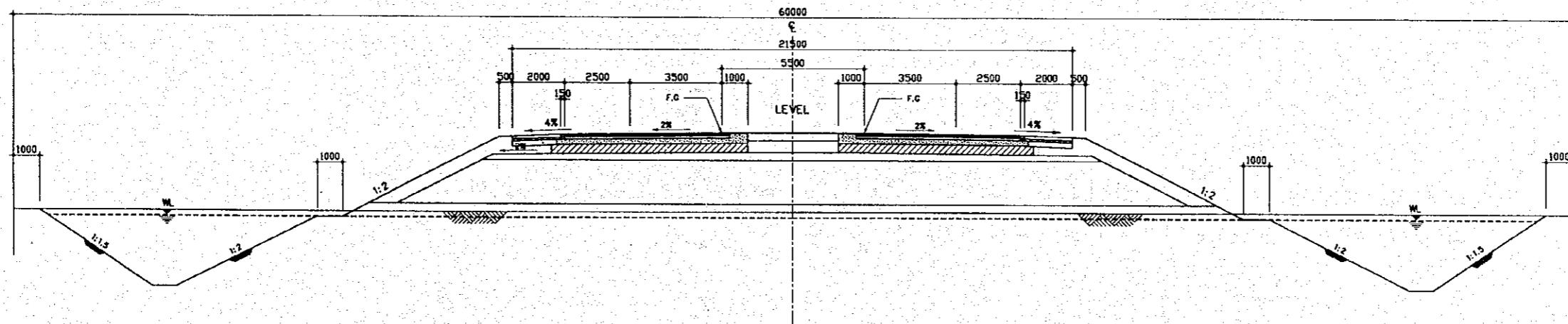
THE STUDY ON CONSTRUCTION OF THE BRIDGE  
OVER THE RIVER RUPSA IN KHULNA (PHASE 2)

RIGHT OF WAY

SCALE	SHEET NO.
1:100	C-01



**A** RIGHT-OF-WAY (36m)  
C-01 SCALE 1:100



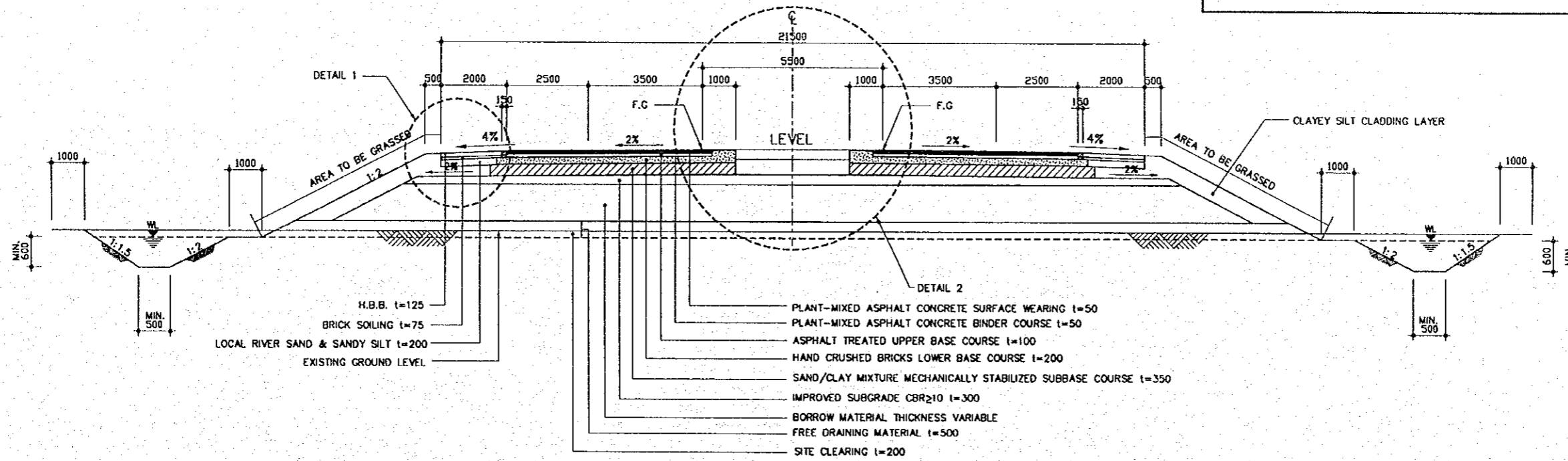
**B** RIGHT-OF-WAY (60m)  
C-01 SCALE 1:100

NOTE.  
ALL DIMENSIONS ARE IN MILLIMETERS  
UNLESS OTHERWISE SHOWN.

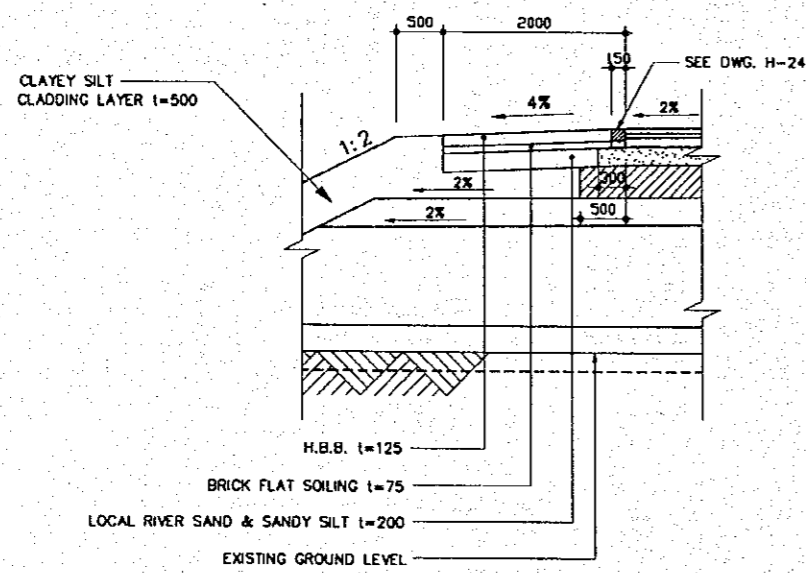
THE STUDY ON CONSTRUCTION OF THE BRIDGE  
OVER THE RIVER RUPSA IN KHULNA (PHASE 2)

TYPICAL CROSS SECTION-CROWN

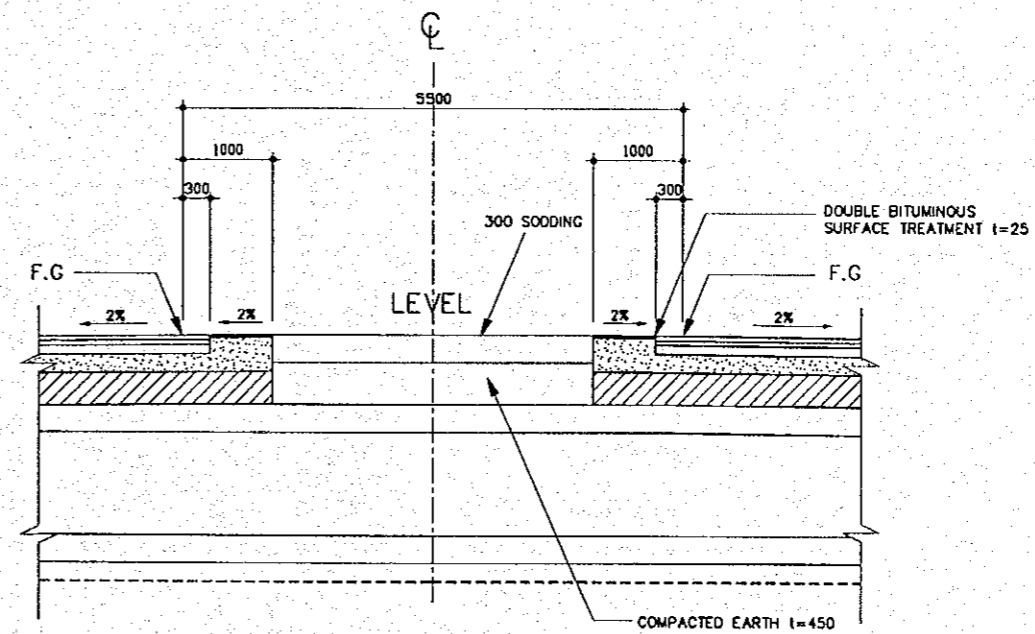
SCALE	SHEET NO.
AS SHOWN	C-02



**A** TYPICAL CROSS SECTION (CROWN)  
C-02 SCALE 1:75



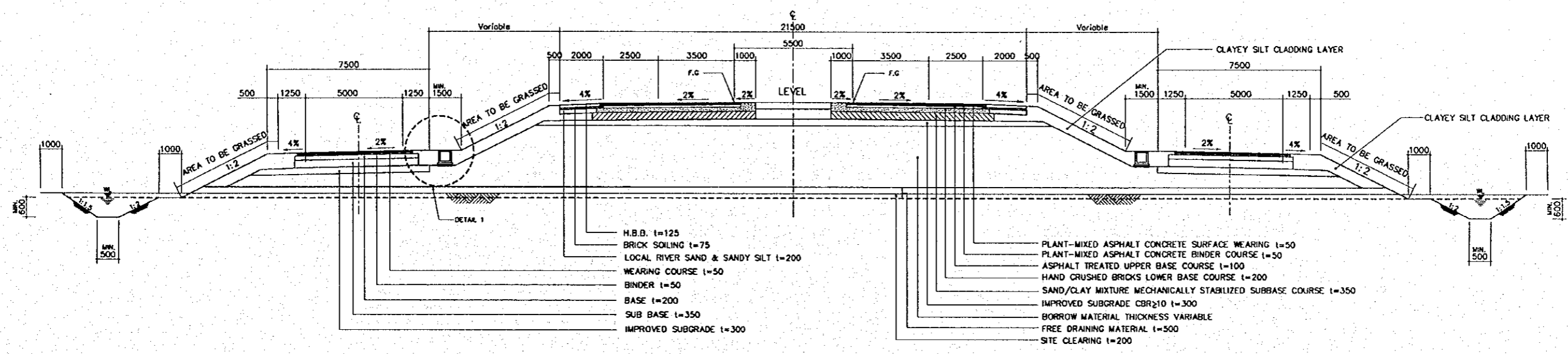
**1** DETAIL 1  
A SCALE 1:40



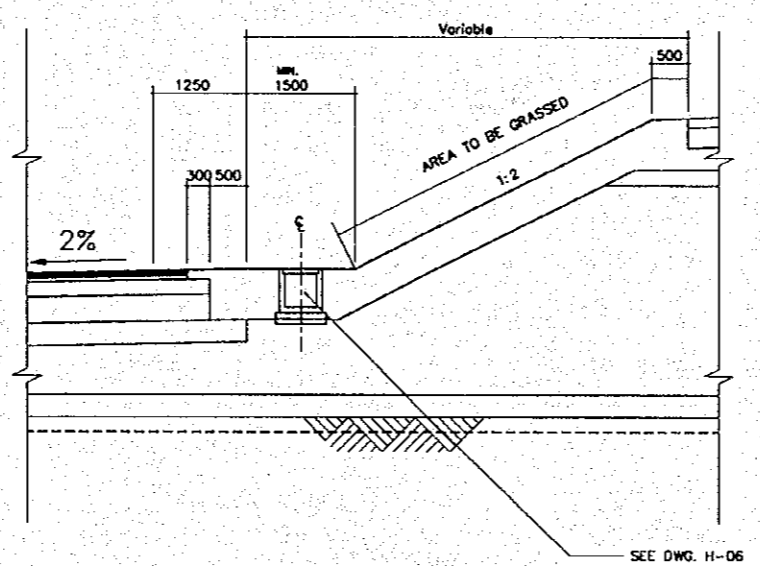
**2** DETAIL 2  
A SCALE 1:40

NOTE.  
ALL DIMENSIONS ARE IN MILLIMETERS  
UNLESS OTHERWISE SHOWN.





**A** TYPICAL CROSS SECTION WITH ACCESS ROAD  
C-04 SCALE 1:100



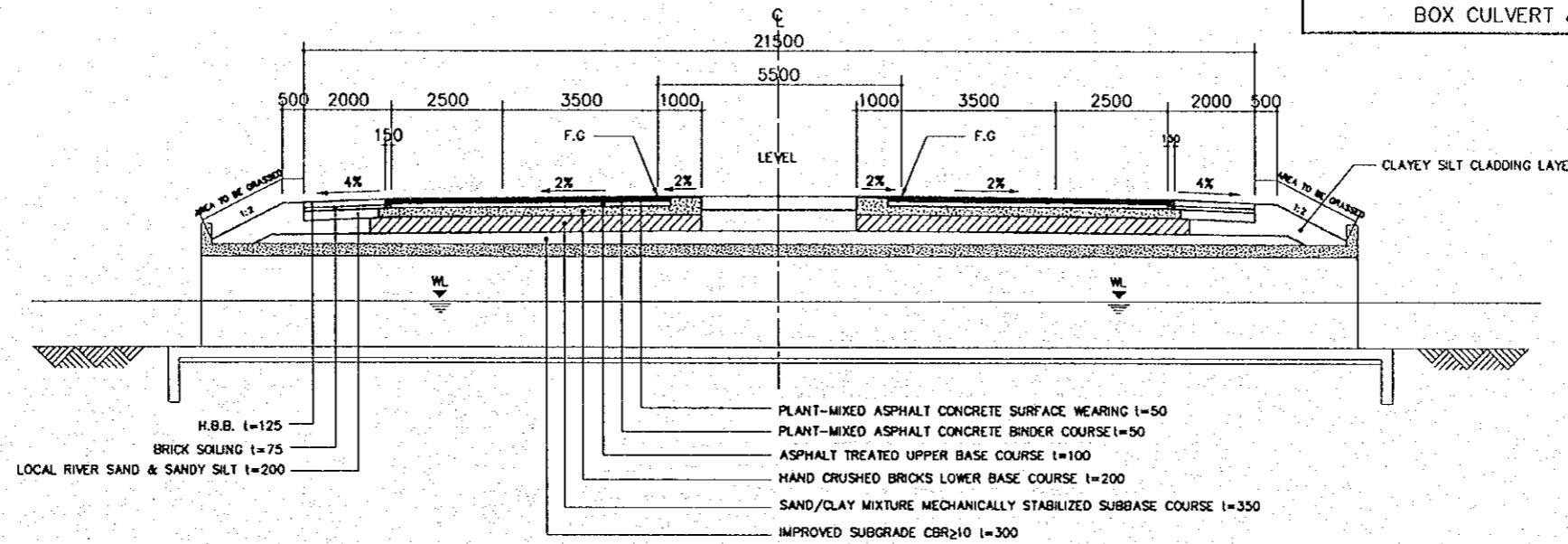
**1** DETAIL 1  
A SCALE 1:50

NOTE.  
ALL DIMENSIONS ARE IN MILLIMETERS  
UNLESS OTHERWISE SHOWN.

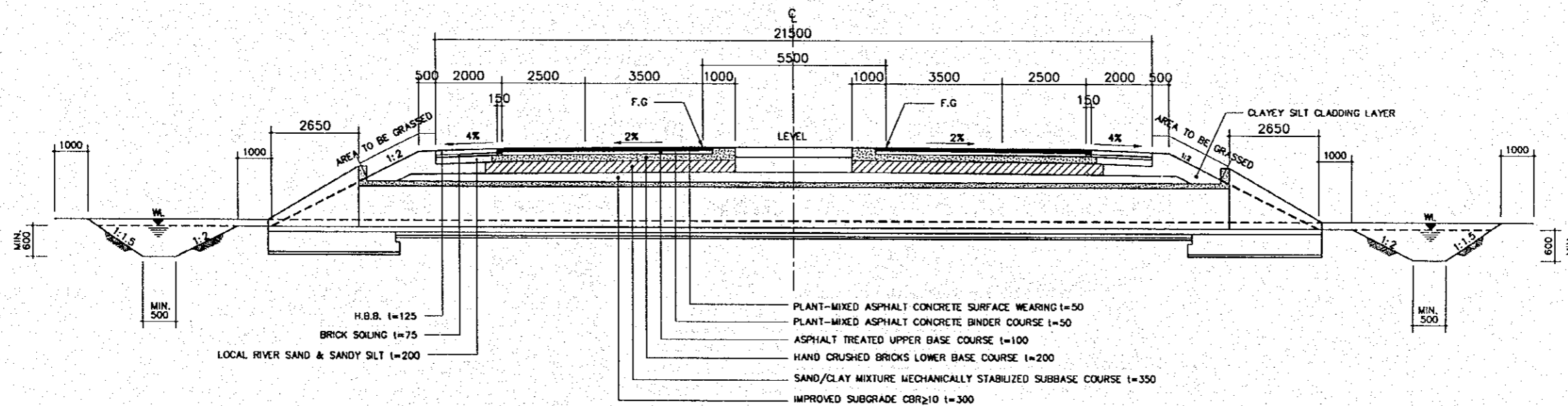
THE STUDY ON CONSTRUCTION OF THE BRIDGE  
OVER THE RIVER RUPSA IN KHULNA (PHASE 2)

TYPICAL CROSS SECTION -  
BOX CULVERT & PIPE CULVERT

SCALE	SHEET NO.
1:75	C-05



**A** TYPICAL CROSS SECTION (BOX CULVERT)  
C-05 SCALE 1:75



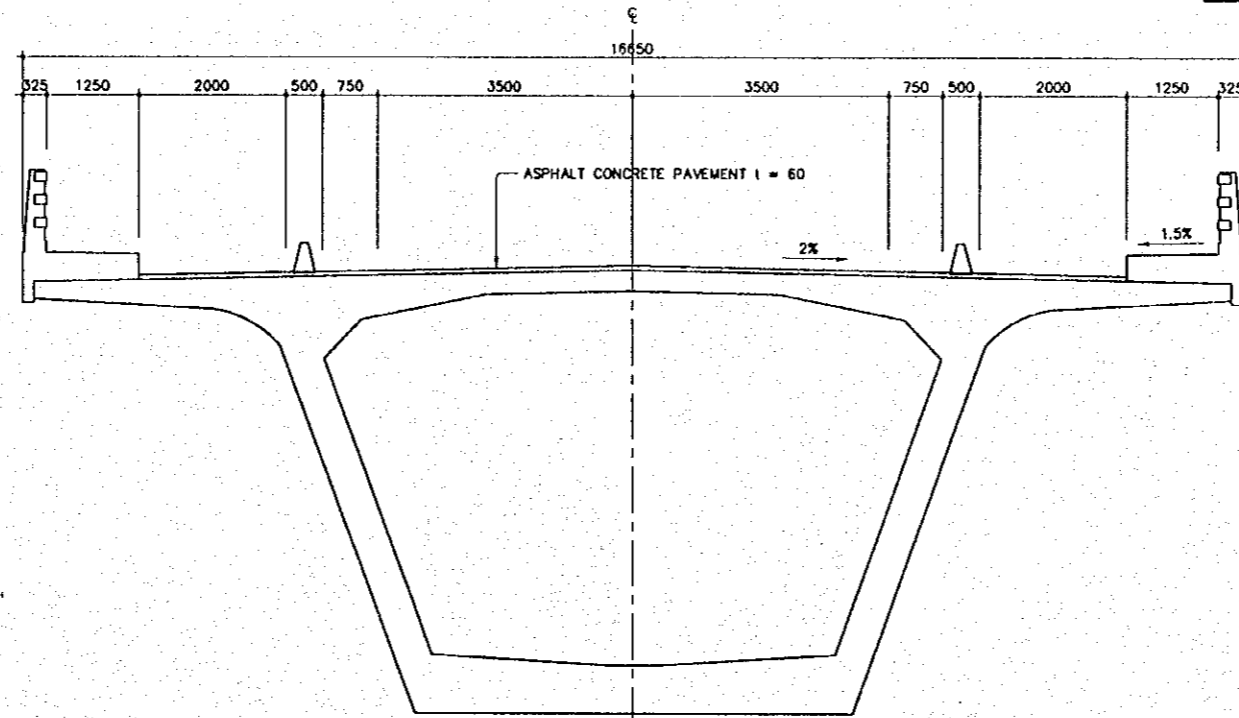
**B** TYPICAL CROSS SECTION (PIPE CULVERT)  
C-05 SCALE 1:75

NOTE.  
ALL DIMENSIONS ARE IN MILLIMETERS  
UNLESS OTHERWISE SHOWN.

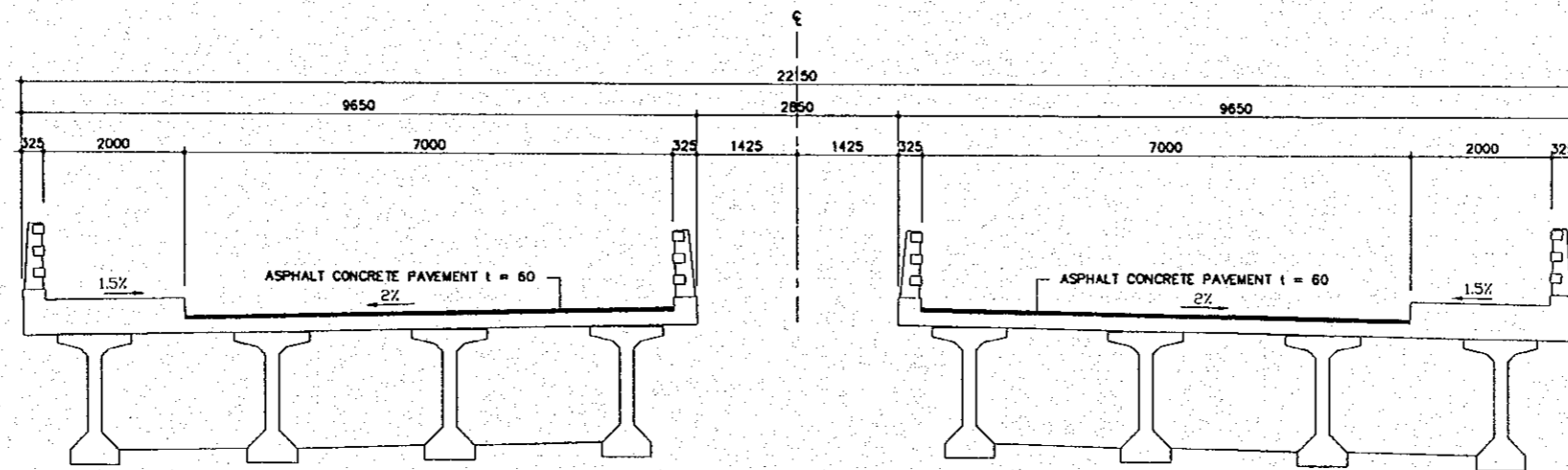
THE STUDY ON CONSTRUCTION OF THE BRIDGE  
OVER THE RIVER RUPSA IN KHULNA (PHASE 2)

TYPICAL CROSS SECTION—RUPSA  
BRIDGE AND CANAL BRIDGE

SCALE	SHEET NO.
1:50	C-06



**A** RUPSA BRIDGE  
C-06 SCALE 1:50



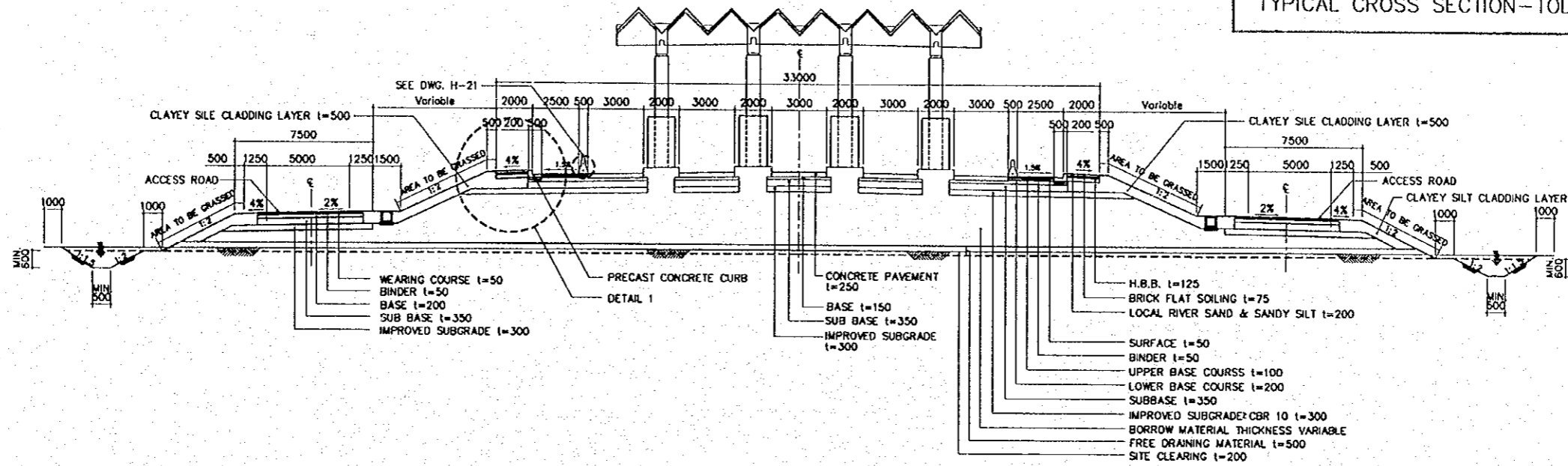
**B** CANAL BRIDGE  
C-06 SCALE 1:50

NOTE.  
ALL DIMENSIONS ARE IN MILLIMETERS  
UNLESS OTHERWISE SHOWN.

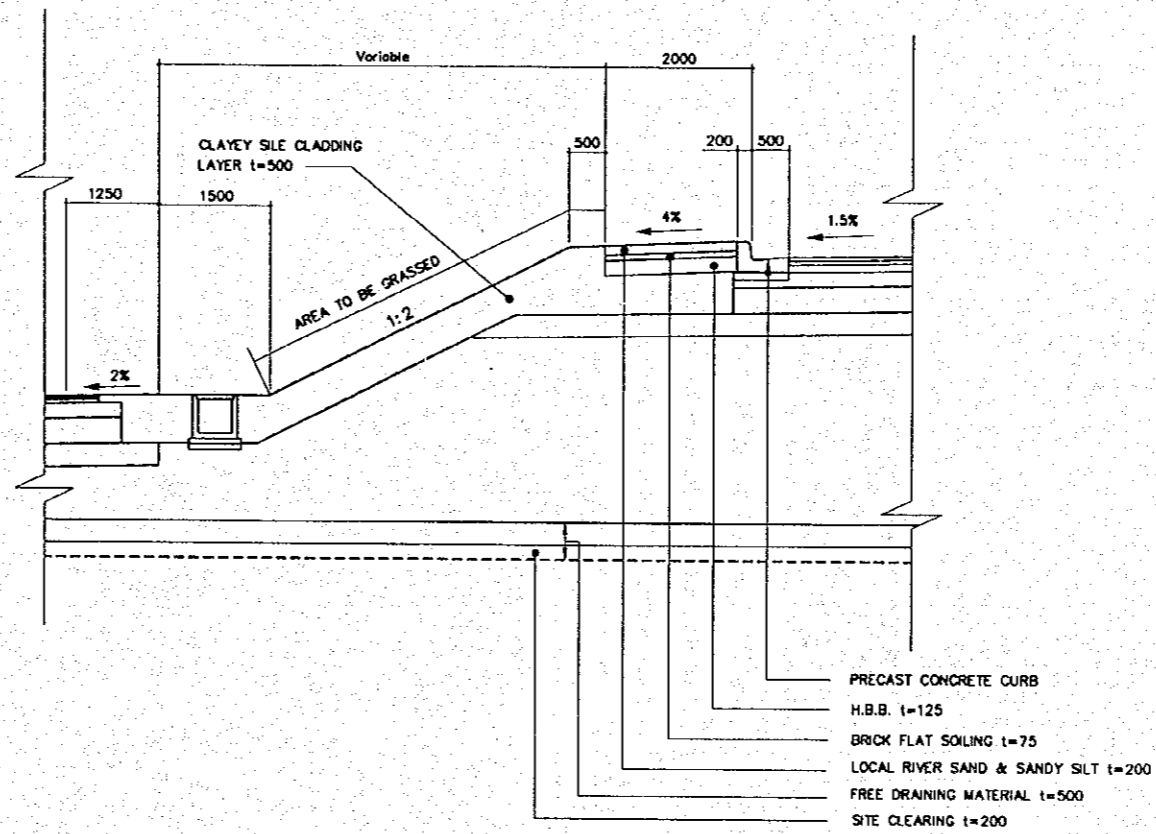
THE STUDY ON CONSTRUCTION OF THE BRIDGE  
OVER THE RIVER RUPSA IN KHULNA (PHASE 2)

TYPICAL CROSS SECTION-TOLL PLAZA

SCALE	SHEET NO.
AS SHOWN	C-07



**A** TYPICAL CROSS SECTION (TOLL PLAZA)  
SCALE 1:150



**1** DETAIL 1  
SCALE 1:50

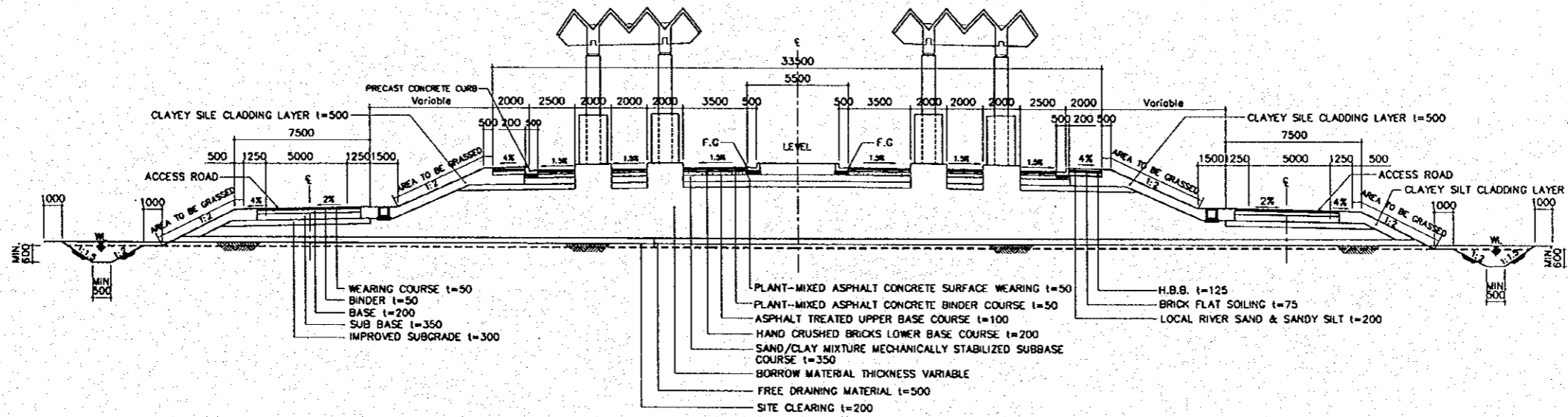
NOTE.  
ALL DIMENSIONS ARE IN MILLIMETERS  
UNLESS OTHERWISE SHOWN.



THE STUDY ON CONSTRUCTION OF THE BRIDGE  
OVER THE RIVER RUPSA IN KHULNA (PHASE 2)

TYPICAL CROSS SECTION-  
TOLL PLAZA FOR AUTO RICKSHOW

SCALE	SHEET NO.
1:150	C-08



**A** TYPICAL CROSS SECTION (TOLL PLAZA FOR AUTORICKSHOW)  
C-08 SCALE 1:150

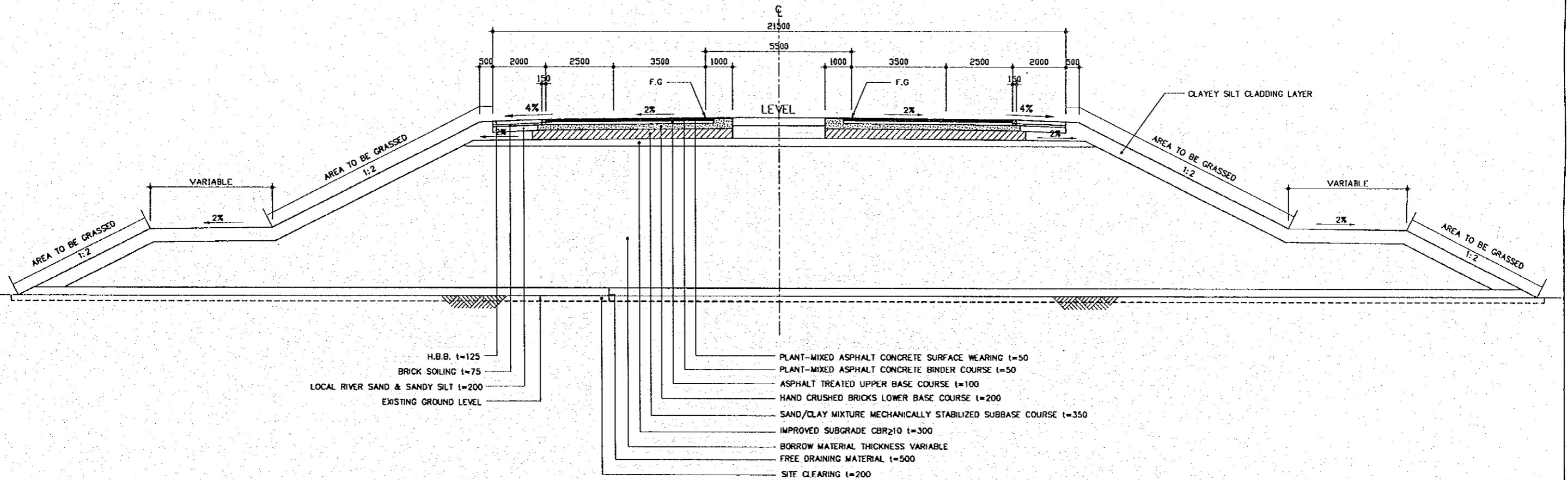
NOTE.  
ALL DIMENSIONS ARE IN MILLIMETERS  
UNLESS OTHERWISE SHOWN.



THE STUDY ON CONSTRUCTION OF THE BRIDGE  
OVER THE RIVER RUPSA IN KHULNA (PHASE 2)

TYPICAL CROSS SECTION—  
COUNTERWEIGHT FILL

SCALE	SHEET NO.
1:75	C-10



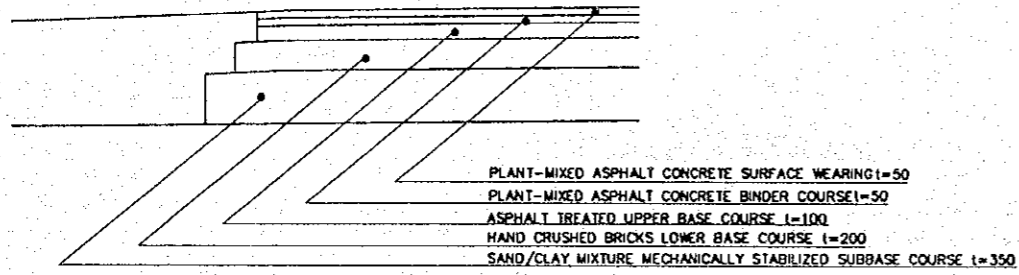
**A** TYPICAL CROSS SECTION (COUNTERWEIGHT FILL)  
C-10 SCALE 1:75

NOTE.  
ALL DIMENSIONS ARE IN MILLIMETERS  
UNLESS OTHERWISE SHOWN.

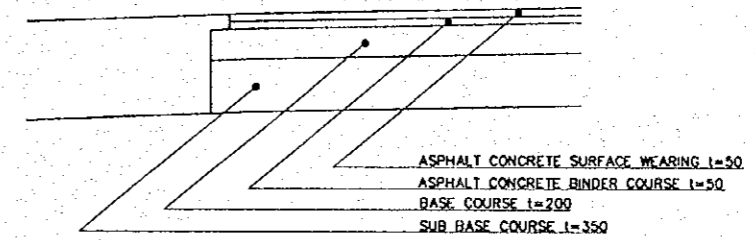
THE STUDY ON CONSTRUCTION OF THE BRIDGE  
OVER THE RIVER RUPSA IN KHULNA (PHASE 2)

PAVEMENT DETAILS

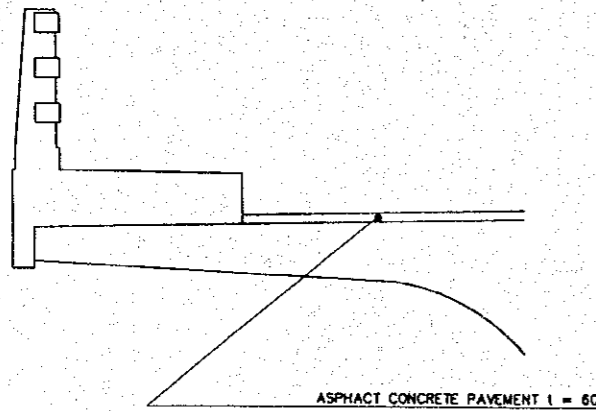
SCALE	SHEET NO.
AS SHOWN	C-11



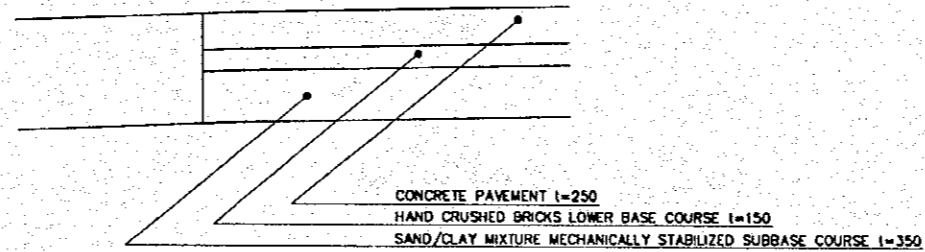
1 PAVEMENT FOR SSKB  
A SCALE 1:25



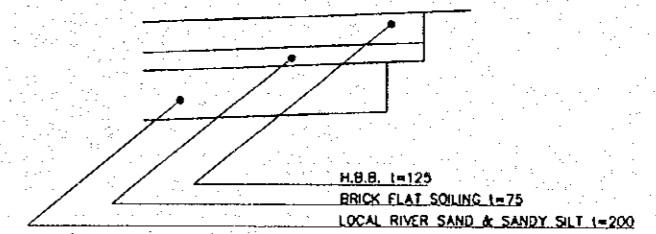
2 PAVEMENT FOR ACCESS ROAD  
A SCALE 1:25



3 PAVEMENT FOR BRIDGE  
A SCALE 1:25



4 PAVEMENT FOR TOLL PLAZA  
A SCALE 1:25



5 PAVEMENT FOR FOOTPATH  
A SCALE 1:15

A PAVEMENT DETAILS  
C-11 SCALE AS SHOWN

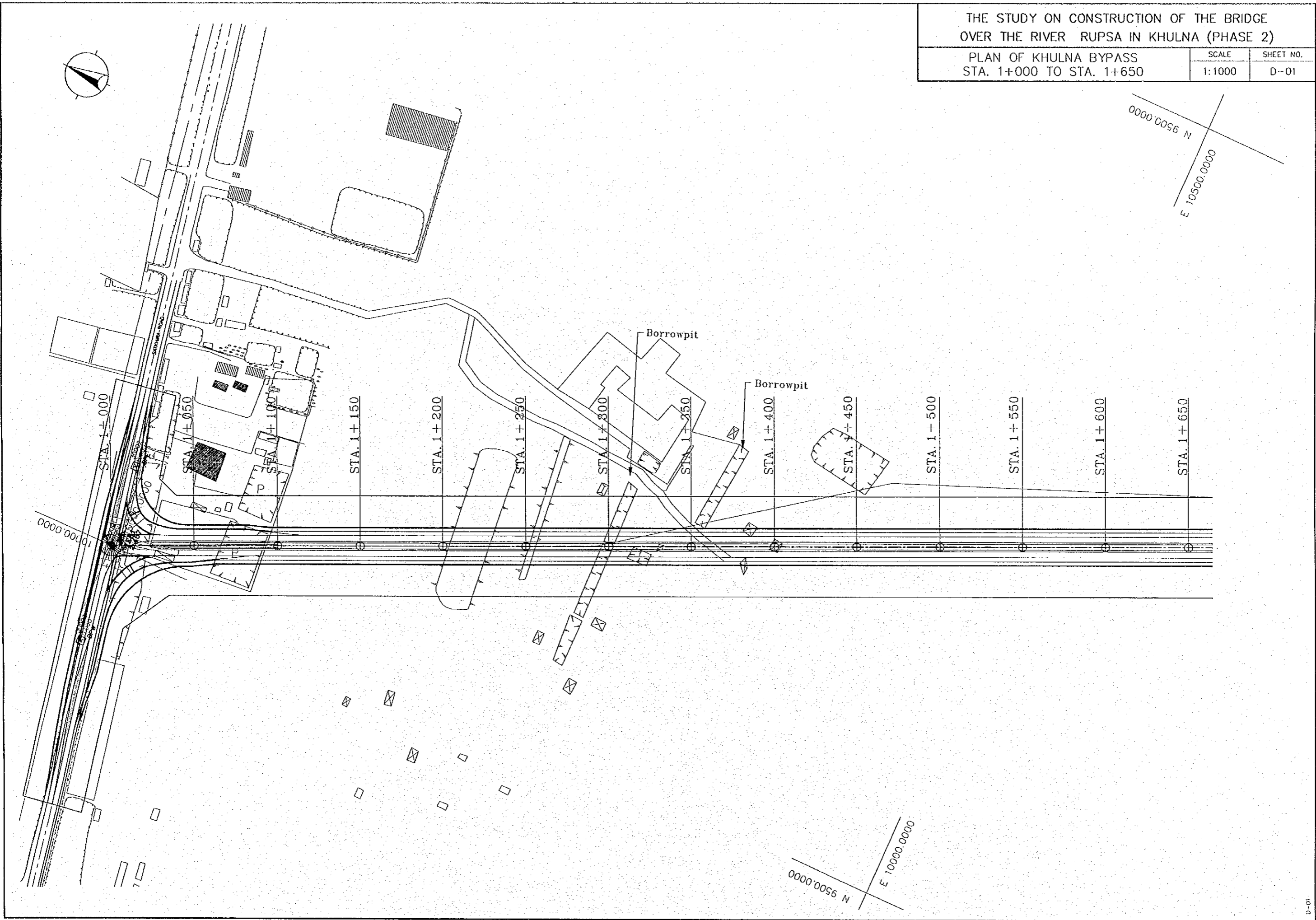
NOTE.  
ALL DIMENSIONS ARE IN MILLIMETERS  
UNLESS OTHERWISE SHOWN.

# **D. PLAN & PROFILE**

THE STUDY ON CONSTRUCTION OF THE BRIDGE  
OVER THE RIVER RUPSA IN KHULNA (PHASE 2)

PLAN OF KHULNA BYPASS  
STA. 1+000 TO STA. 1+650

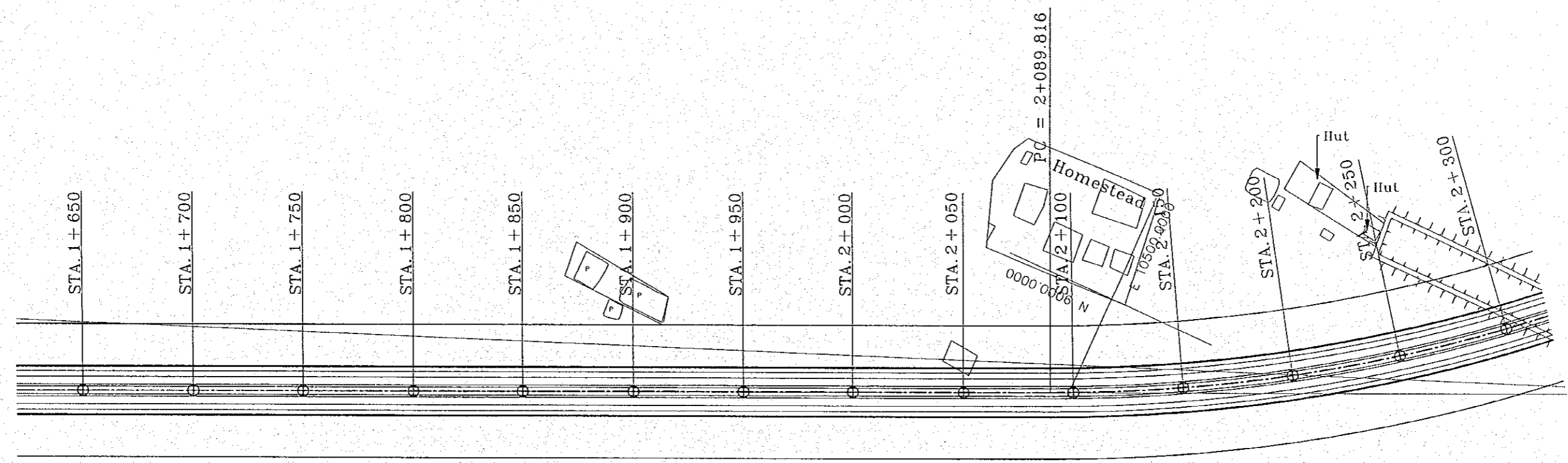
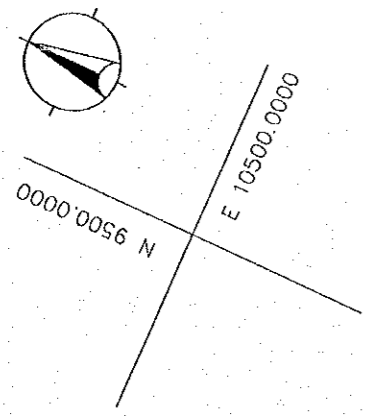
SCALE	SHEET NO.
1:1000	D-01



THE STUDY ON CONSTRUCTION OF THE BRIDGE  
OVER THE RIVER RUPSA IN KHULNA (PHASE 2)

PLAN OF RUPSHA BYPASS  
STA. 1+650 TO STA. 2+300

SCALE	SHEET NO.
1:1000	D-02

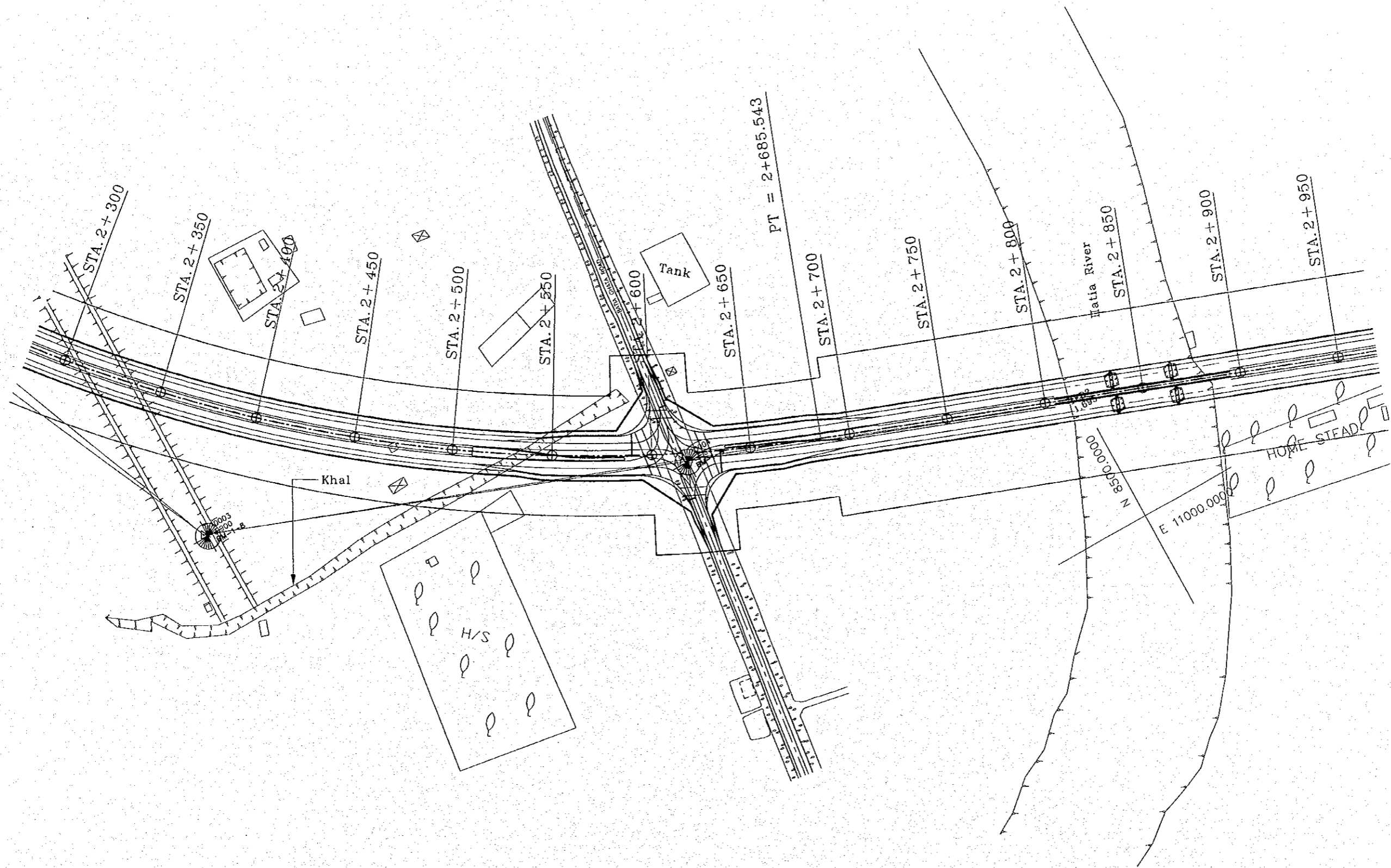


THE STUDY ON CONSTRUCTION OF THE BRIDGE  
OVER THE RIVER RUPSHA IN KHULNA (PHASE 2)

PLAN OF RUPSHA BYPASS  
STA. 2+300 TO 2+950

SCALE  
1:1000

SHEET NO.  
D-03

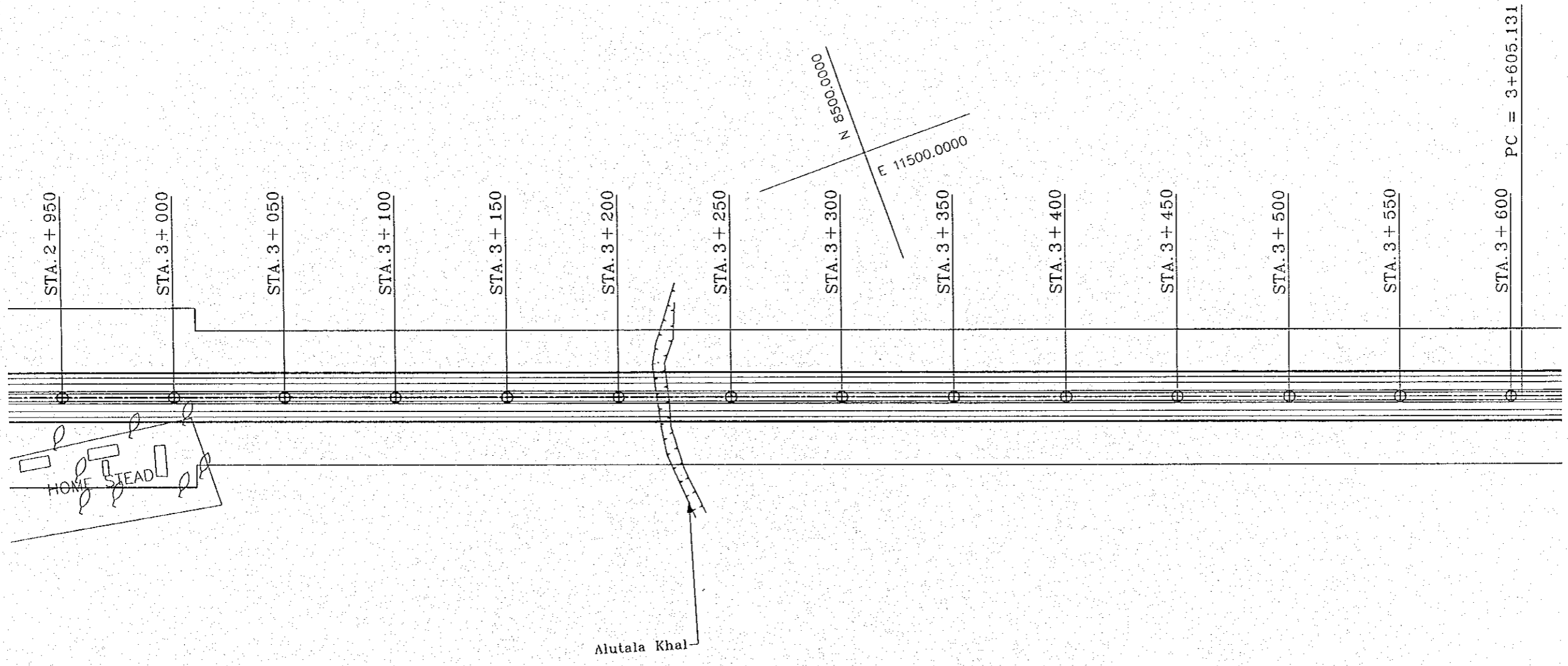
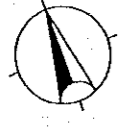




THE STUDY ON CONSTRUCTION OF THE BRIDGE  
OVER THE RIVER RUPSA IN KHULNA (PHASE 2)

PLAN OF RUPSHA BYPASS  
STA. 2+950 TO STA. 3+600

SCALE	SHEET NO.
1:1000	D-04



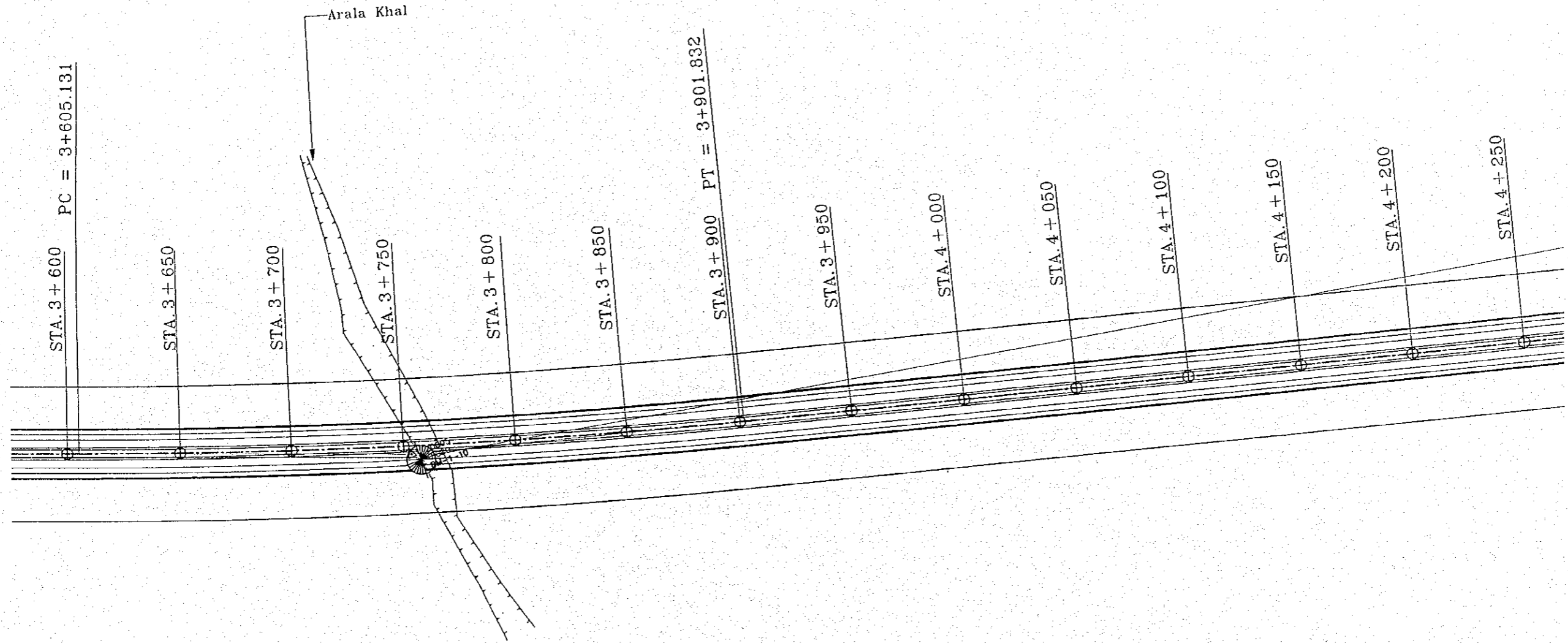


N 8500.0000  
E 12000.0000

THE STUDY ON CONSTRUCTION OF THE BRIDGE  
OVER THE RIVER RUPSA IN KHULNA (PHASE 2)

PLAN OF RUPSHA BYPASS  
STA. 3+600 TO STA. 4+250

SCALE	SHEET NO.
1:1000	D-05

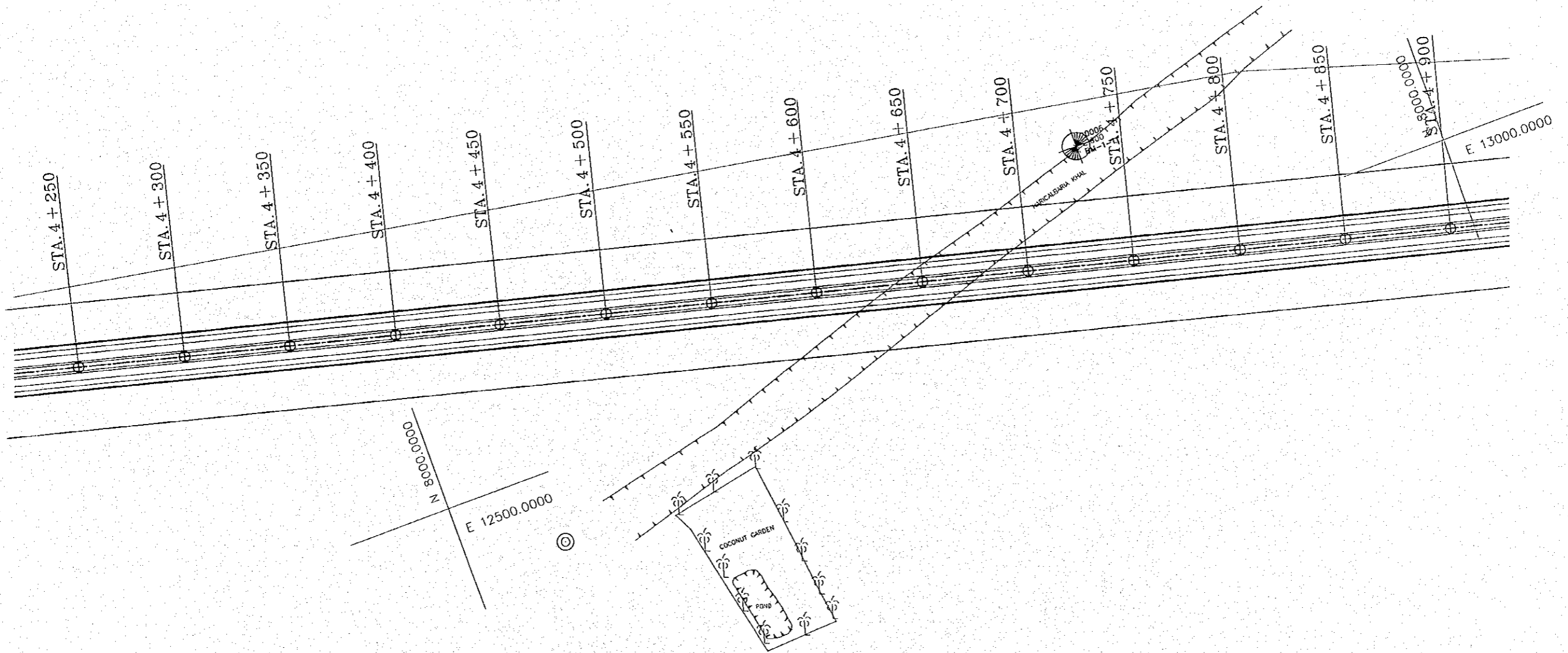
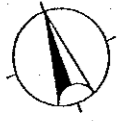


N 8000.0000  
E 12000.0000

THE STUDY ON CONSTRUCTION OF THE BRIDGE  
OVER THE RIVER RUPSA IN KHULNA (PHASE 2)

PLAN OF RUPSHA BYPASS  
STA. 4+250 TO STA. 4+900

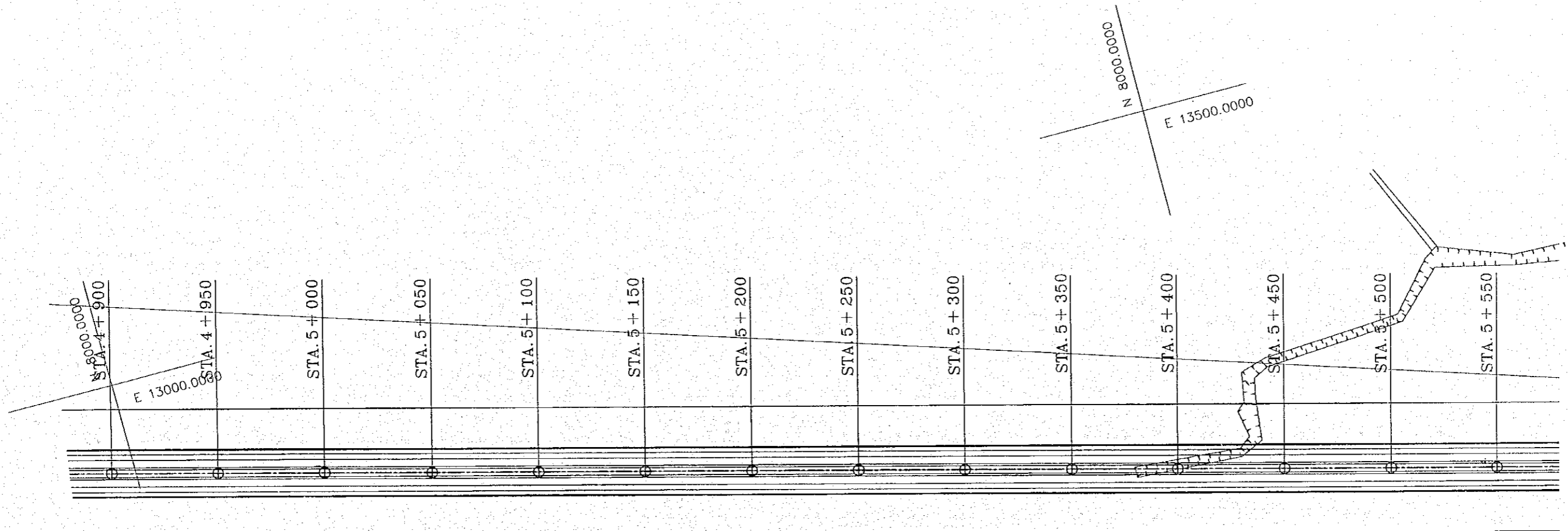
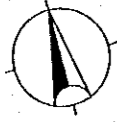
SCALE	SHEET NO.
1:1000	D-06

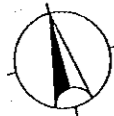


THE STUDY ON CONSTRUCTION OF THE BRIDGE  
OVER THE RIVER RUPSA IN KHULNA (PHASE 2)

PLAN OF RUPSHA BYPASS  
STA. 4+900 TO STA. 5+550

SCALE	SHEET NO.
1:1000	D-07



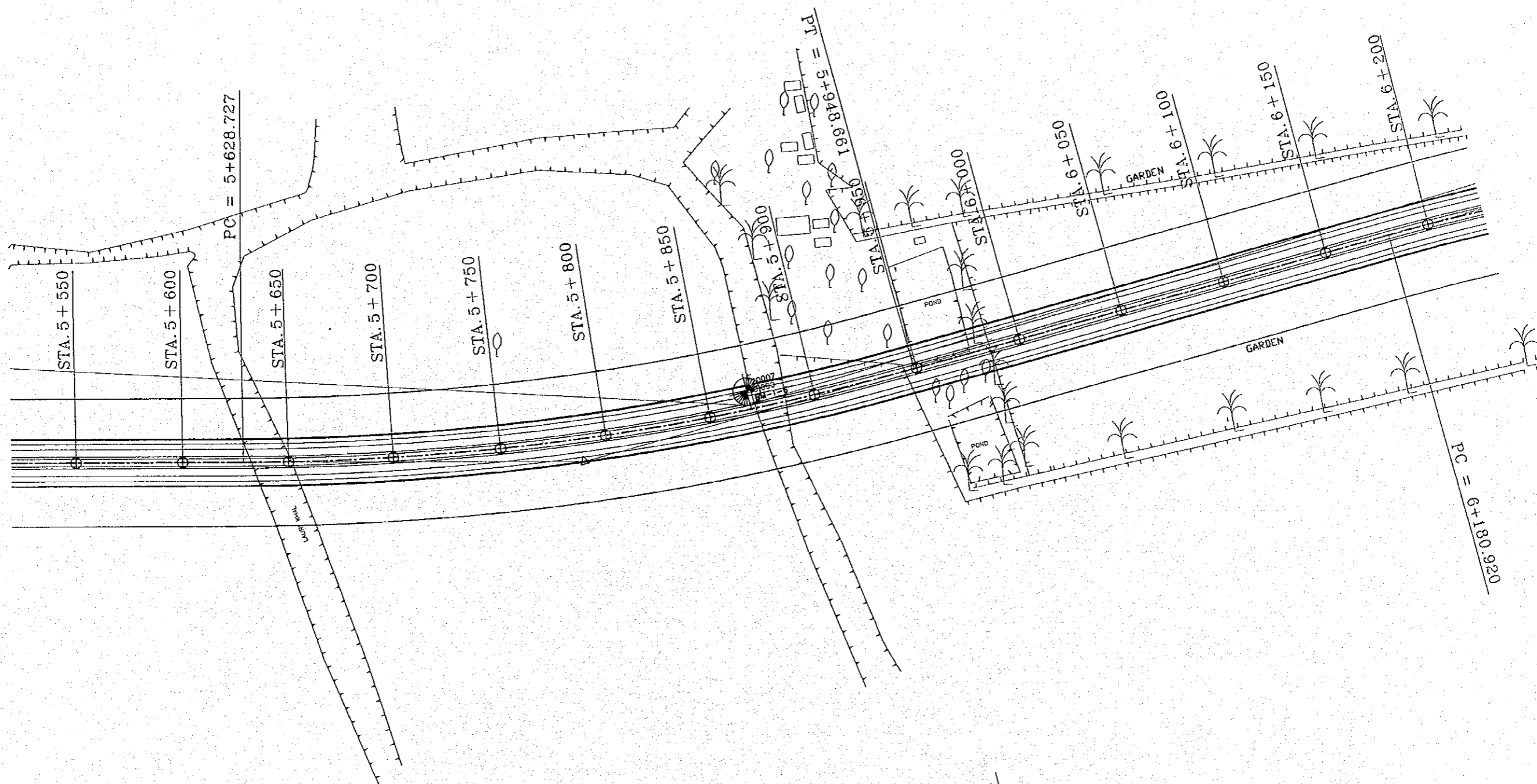


THE STUDY ON CONSTRUCTION OF THE BRIDGE  
OVER THE RIVER RUPSA IN KHULNA (PHASE 2)

PLAN OF RUPSHA BYPASS  
STA. 5+550 TO STA. 6+200

SCALE	SHEET NO.
1:1000	D-08

N 8000.0000  
E 14000.0000

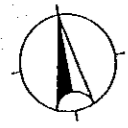


N 7500.0000  
E 14000.0000

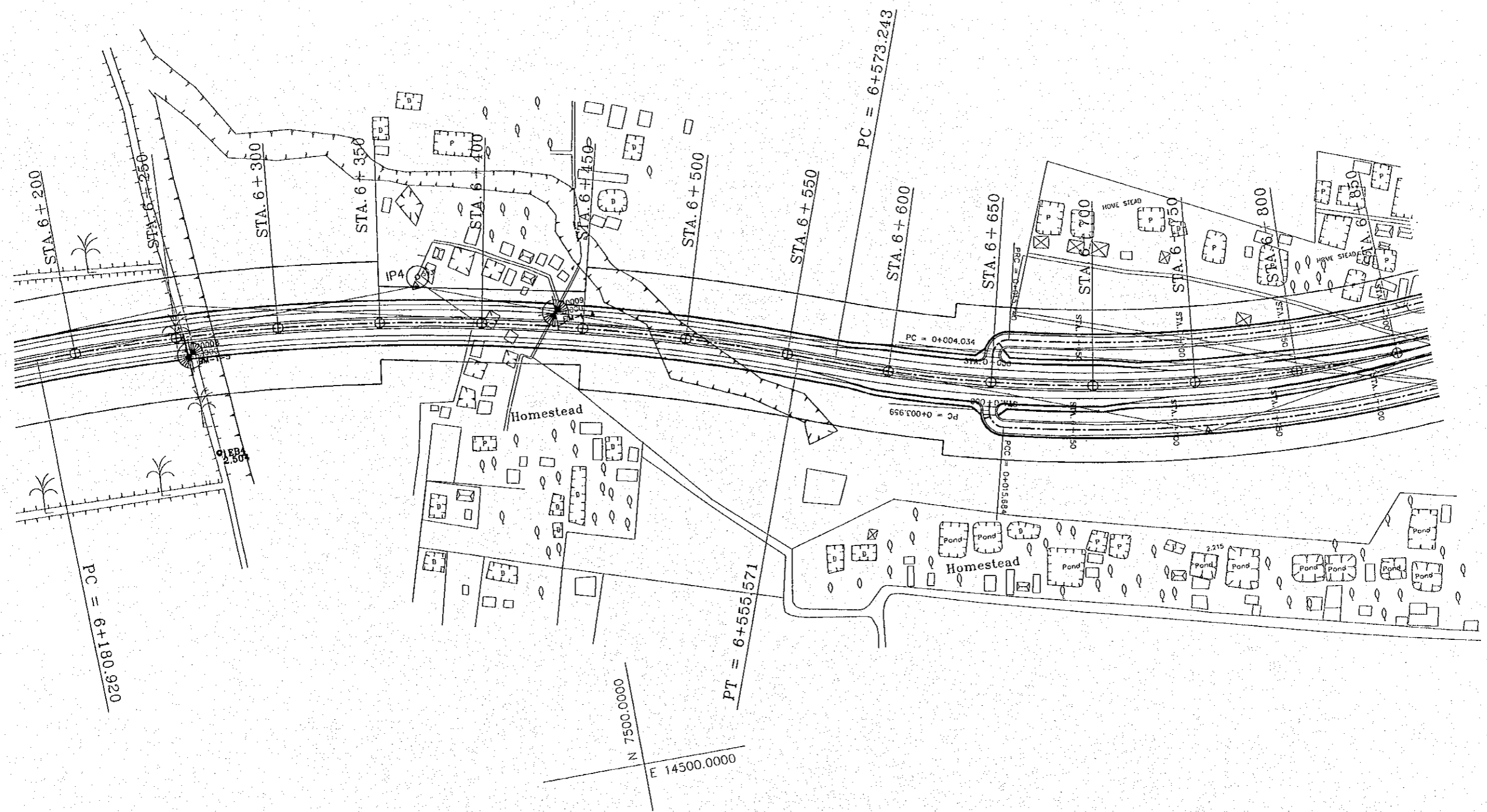
THE STUDY ON CONSTRUCTION OF THE BRIDGE  
OVER THE RIVER RUPSA IN KHULNA (PHASE 2)

PLAN OF RUPSHA BYPASS  
STA. 6+200 TO STA. 6+850

SCALE	SHEET NO.
1:1000	D-09



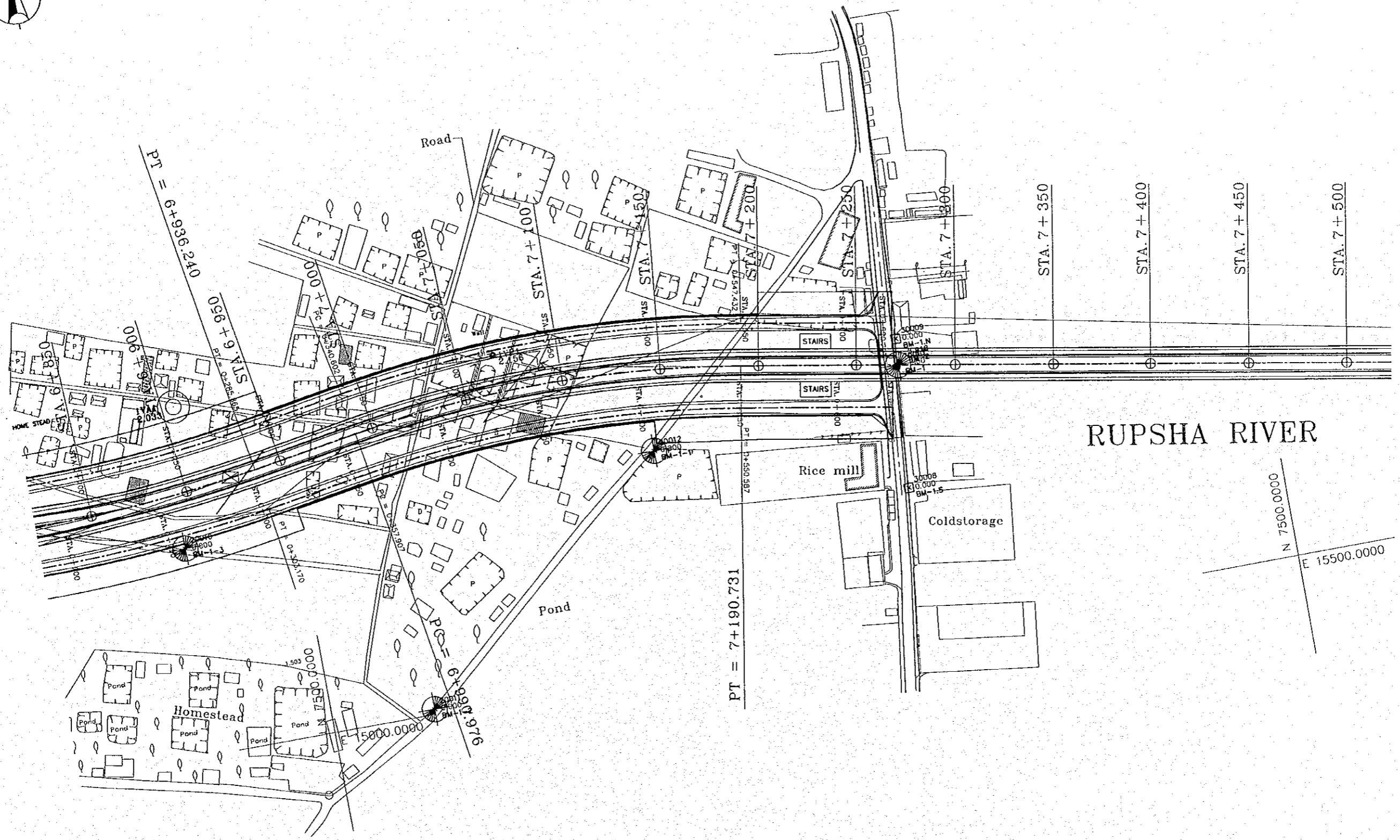
N 8000.0000  
E 14500.0000



THE STUDY ON CONSTRUCTION OF THE BRIDGE  
OVER THE RIVER RUPSHA IN KHULNA (PHASE 2)

PLAN OF RUPSHA BYPASS  
STA. 6+850 TO STA. 7+500

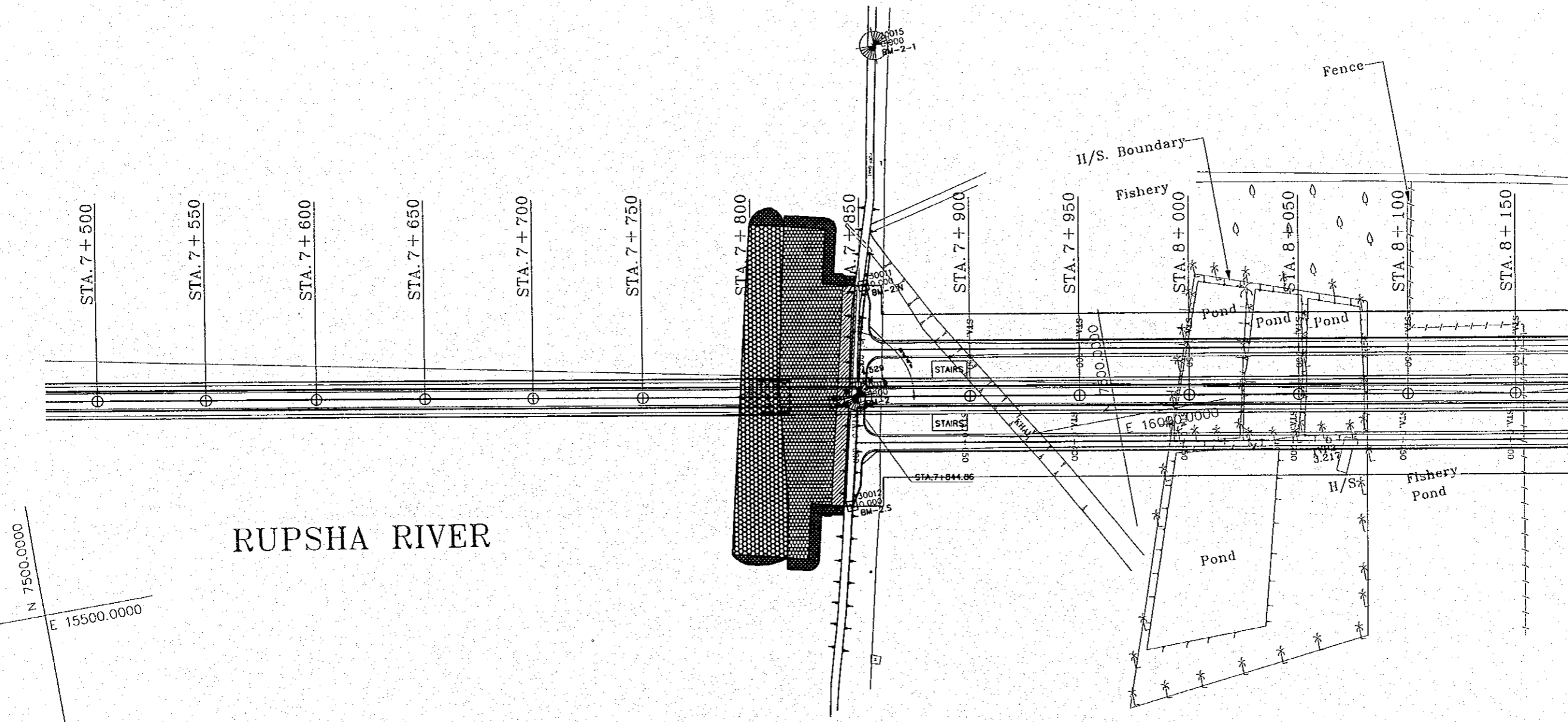
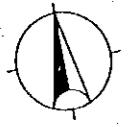
SCALE	SHEET NO.
1:1000	D-10



THE STUDY ON CONSTRUCTION OF THE BRIDGE  
OVER THE RIVER RUPSHA IN KHULNA (PHASE 2)

PLAN OF RUPSHA BYPASS  
STA. 7+500 TO STA. 8+150

SCALE	SHEET NO.
1:1000	D-11



RUPSHA RIVER

N 7500.0000  
E 15500.0000

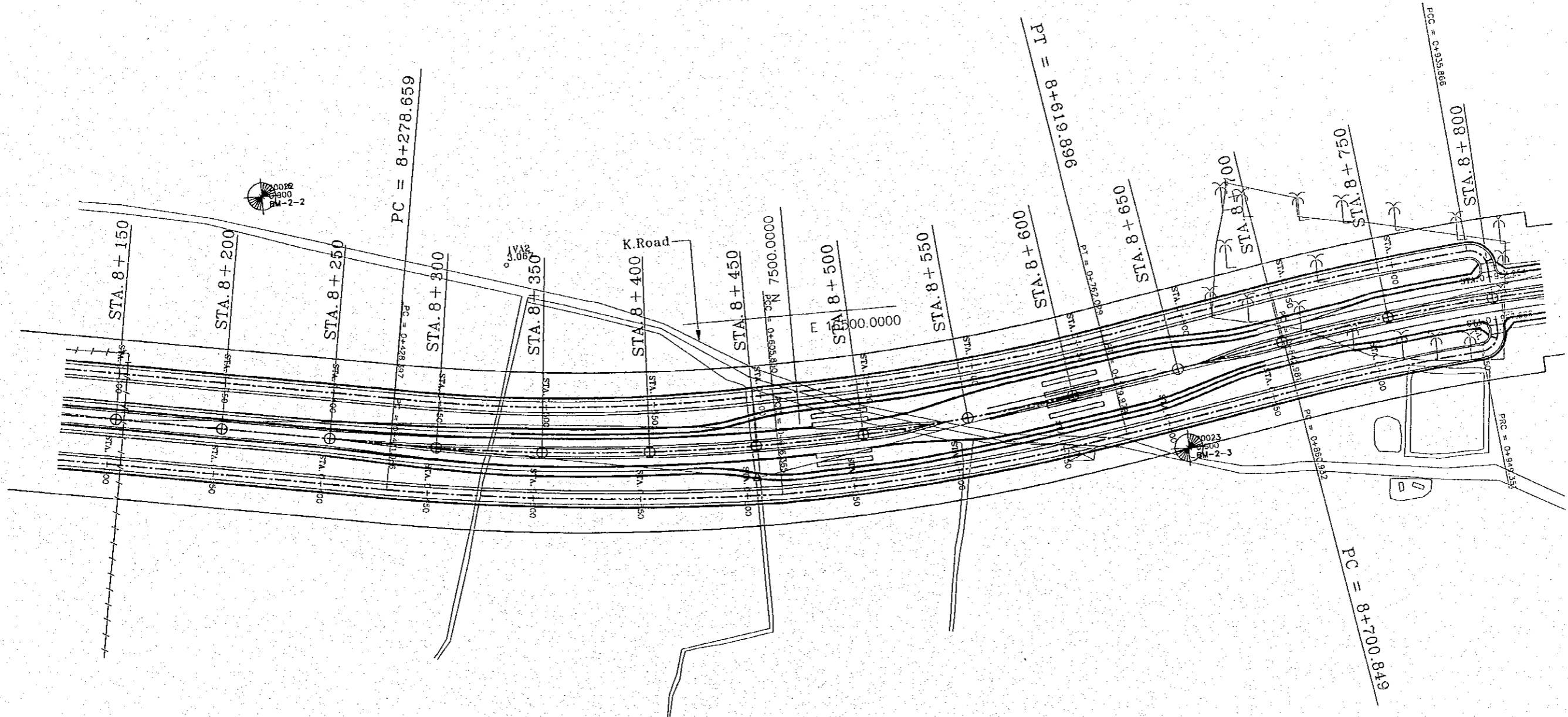
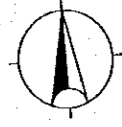


THE STUDY ON CONSTRUCTION OF THE BRIDGE  
OVER THE RIVER RUPSHA IN KHULNA (PHASE 2)

PLAN OF RUPSHA BYPASS  
STA. 8+150 TO 8+800

SCALE  
1:1000

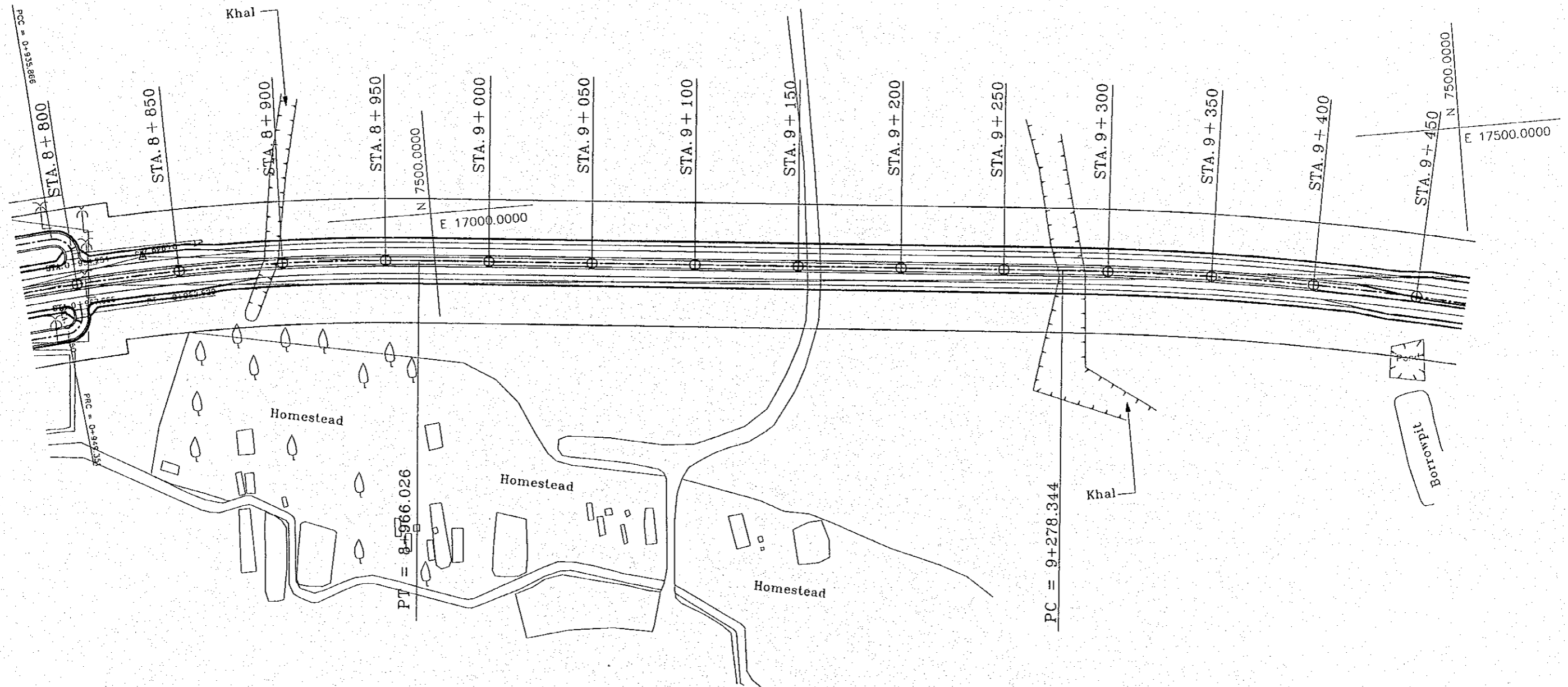
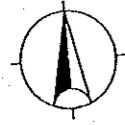
SHEET NO.  
D-12



THE STUDY ON CONSTRUCTION OF THE BRIDGE  
OVER THE RIVER RUPSHA IN KHULNA (PHASE 2)

PLAN OF RUPSHA BYPASS  
STA. 8+800 TO 9+450

SCALE	SHEET NO.
1:1000	D-13



THE STUDY ON CONSTRUCTION OF THE BRIDGE  
OVER THE RIVER RUPSHA IN KHULNA (PHASE 2)

PLAN OF RUPSHA BYPASS  
STA. 9+450 TO 10+100

SCALE	SHEET NO.
1:1000	D-14



N 17500.0000  
E 18000.0000

