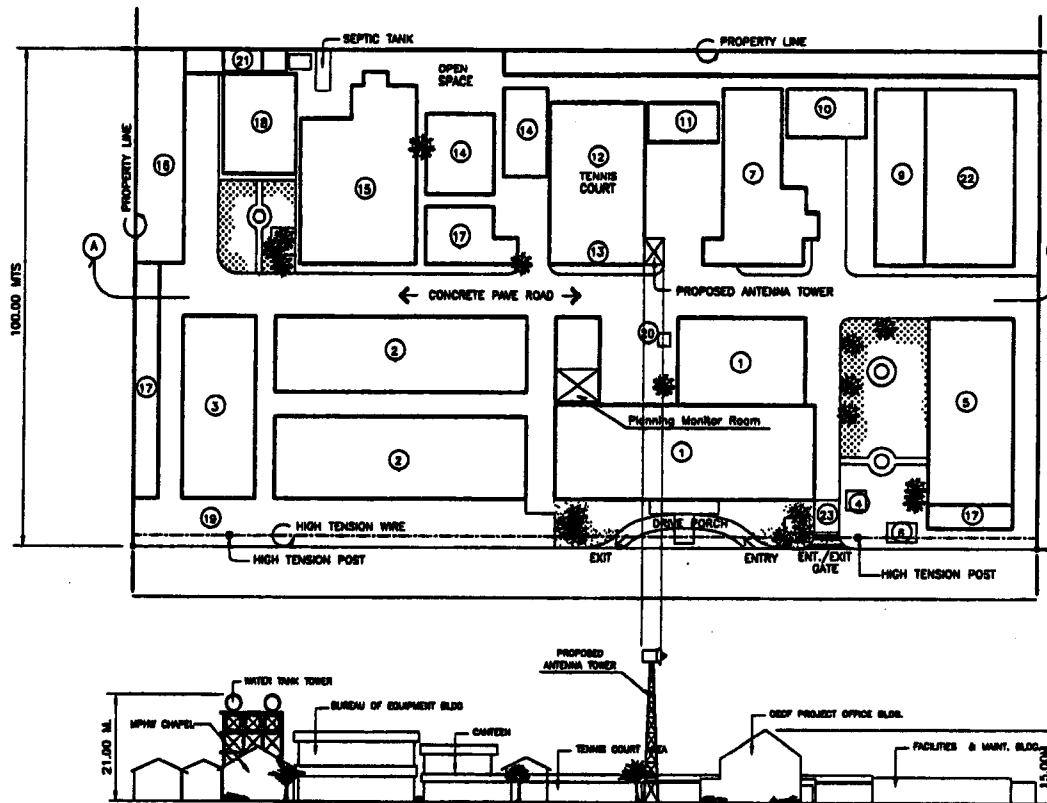
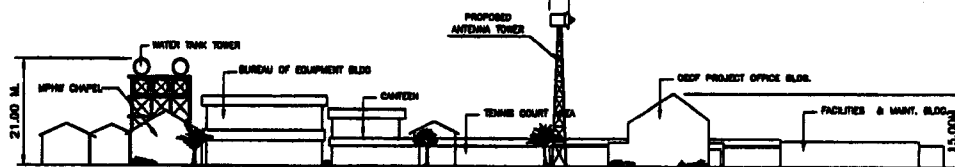


VICINITY MAP- NCR AREA
(NO SCALE)



- LEGEND:
- ① NCR BUILDING
 - ② BUREAU OF MAINTENANCE
 - ③ SOLID WASTE BUILDING
 - ④ GUARD HOUSE
 - ⑤ GYMNASIUM
 - ⑥ RESIDENTIAL BUILDING
 - ⑦ OECF OFFICE BUILDING
 - ⑧ MESHALL
 - ⑨ DACL BUILDING
 - ⑩ MEDICAL BLDG
 - ⑪ TENNIS COURT
 - ⑫ PMO BUILDING
 - ⑬ IBRD PMO BLDG
 - ⑭ BUREAU OF EQUIPMENTS
 - ⑮ ADB PROJECTS
 - ⑯ CANTEEN
 - ⑰ MPWH CHAPEL
 - ⑱ HIGH TENSION WIRE
 - ⑳ EXISTING ANTENNA
 - ㉑ WATER TANK
 - ㉒ FACILITIES & MAINT. BLDG.
 - ㉓ ENTRANCE GATE



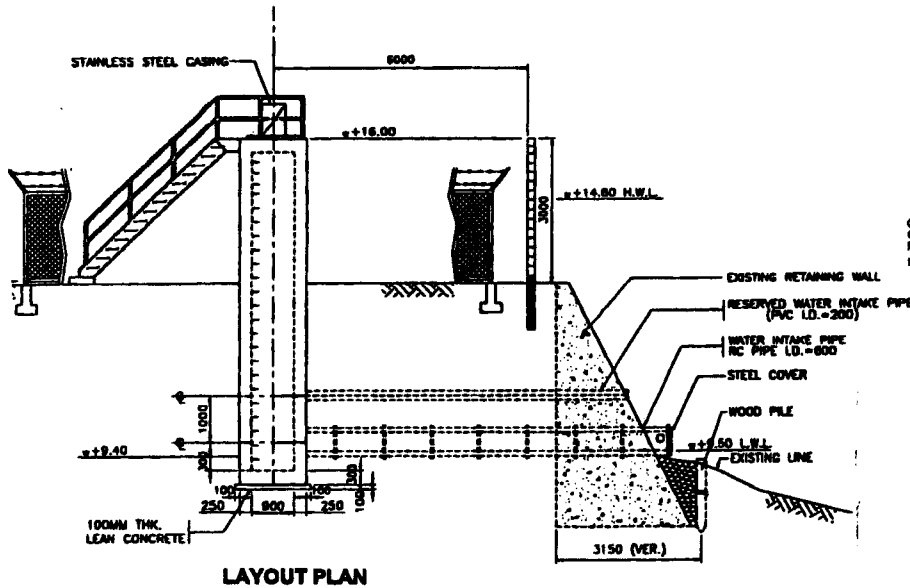
FRONT ELEVATION (A - A)

DPWH-NCR COMPOUND PLAN
(NO SCALE)

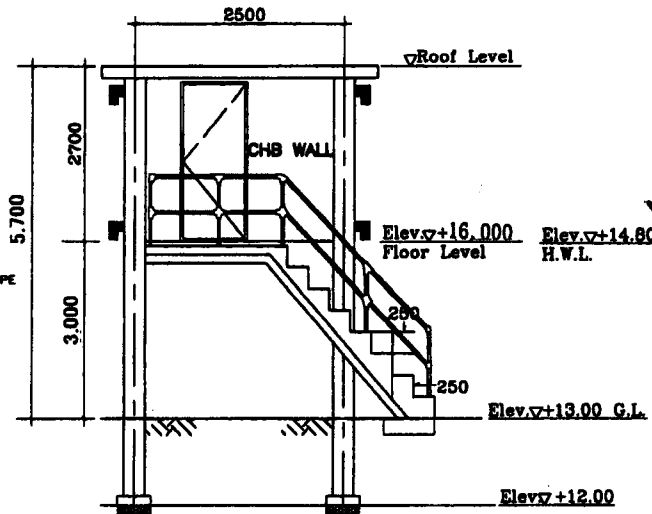
Fig. 2-22 NCR RELAY TOWER LOCATION PLAN

CONSULTANTS	SUBMITTED BY:	PROJECT TITLE	DRAWING NO.
CTI ENGINEERING INTERNATIONAL CO., LTD IN ASSOCIATION WITH WOODFIELDS CONSULTANTS, INC.	G.V. ABALOS, JR.	THE BASIC DESIGN STUDY ON THE PROJECT FOR REHABILITATION OF THE FLOOD CONTROL OPERATION AND WARNING SYSTEM IN METRO MANILA.	NCR PLAN 8-01
	SURVEYED BY:		
	G.V. ABALOS, JR.		
	DRAWN BY:		
	P.T. CENTENO		
	CHECKED BY:		

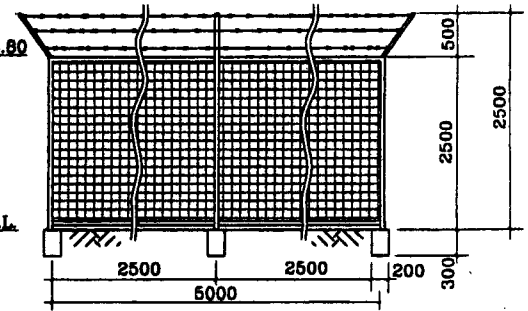
San Juan Water Level Gauge Station



1 SECTIONAL ELEV. OF WATER LEVEL GAUGE
SCALE 1:300 MTS



2 SECTIONAL ELEV. OF RAINGAUGE STATION
SCALE 1:300 MTS.

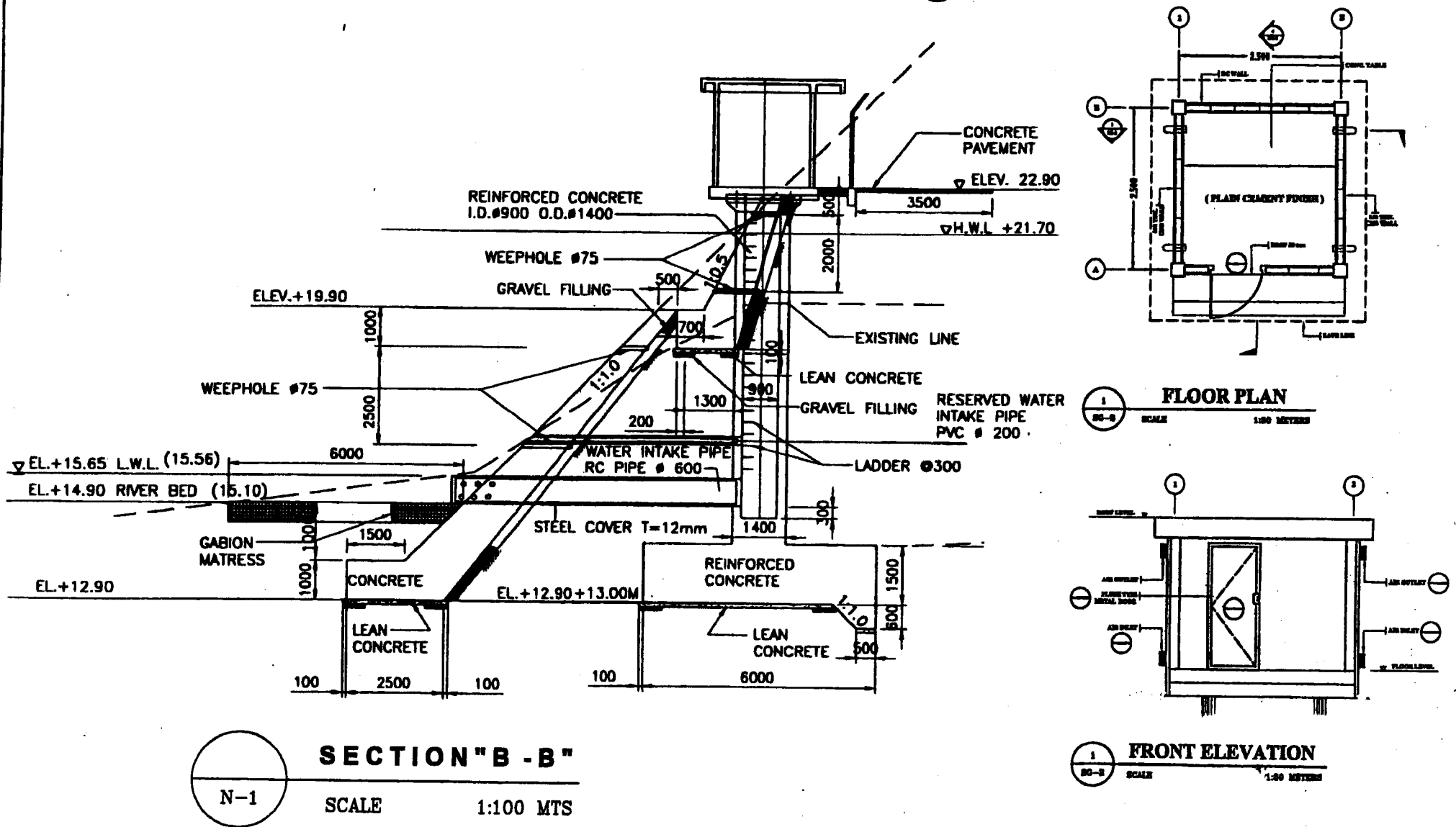


3 SECTIONAL ELEV. OF FENCE
SCALE 1:300 MTS.

Hydrology Observation Facilities Standard Plan II

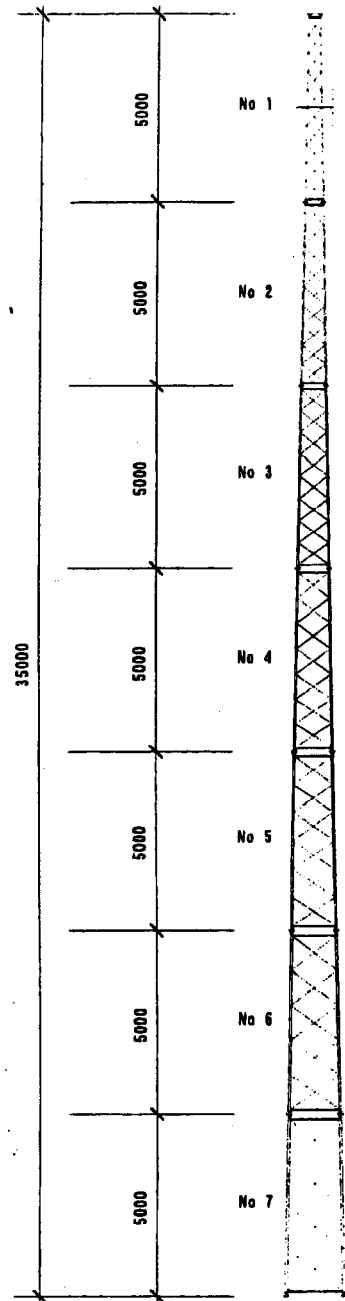
Fig. 2-24 SAN JUAN WATER-LEVEL STATION BUILDING PLAN

Nangka Water Level Gauge Station



Hydrology Observation Facilities Standard Plan III

Fig. 2-25 NANGKA RAINFALL AND WATER-LEVEL STATION BUILDING PLAN



MAIN BAR (ROUND 28 φ)
LATTICE BAR (ROUND 13 φ)
LATTICE PITCH (485x10)

No 1

MAIN BAR (ROUND 32 φ)
LATTICE BAR (ROUND 13 φ)
LATTICE PITCH (538x 9)

No 2

MAIN BAR (ROUND 38 φ)
LATTICE BAR (ROUND 16 φ)
LATTICE PITCH (601x 8)

No 3

MAIN BAR (ROUND 44 φ)
LATTICE BAR (ROUND 19 φ)
LATTICE PITCH (684x 7)

No 4

MAIN BAR (ROUND 50 φ)
LATTICE BAR (ROUND 22 φ)
LATTICE PITCH (792x 6)

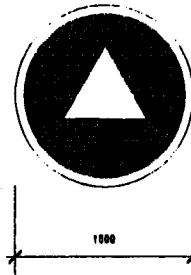
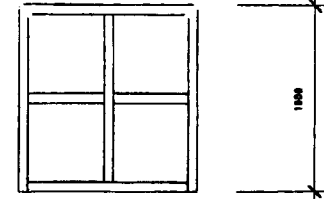
No 5

MAIN BAR (ROUND 55 φ)
LATTICE BAR (ROUND 22 φ)
LATTICE PITCH (948x 5)

No 6

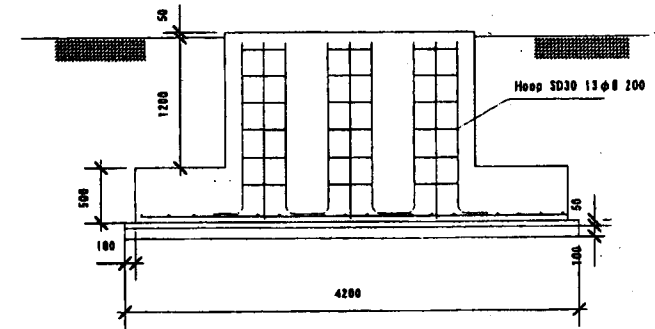
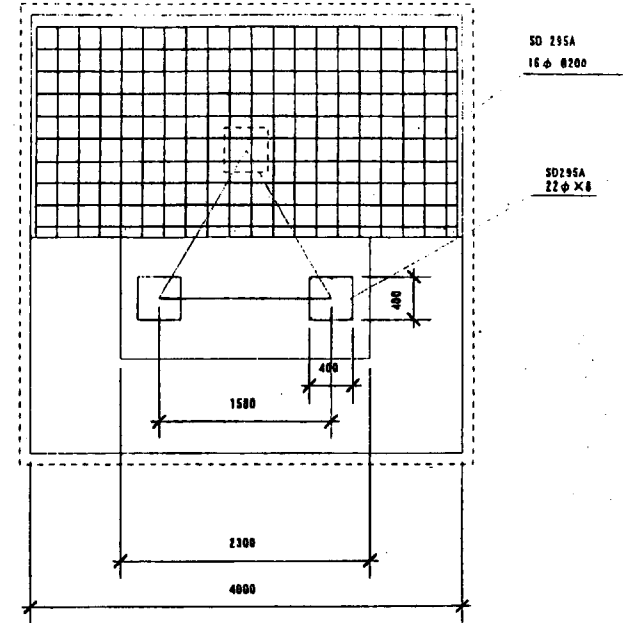
MAIN BAR (ROUND 65 φ)
LATTICE BAR (ROUND 25 φ)
LATTICE PITCH (1176x4)

No 7



PLATFORM
3 1/2" x 3"

35m TRIANGULAR TOWER
1/150

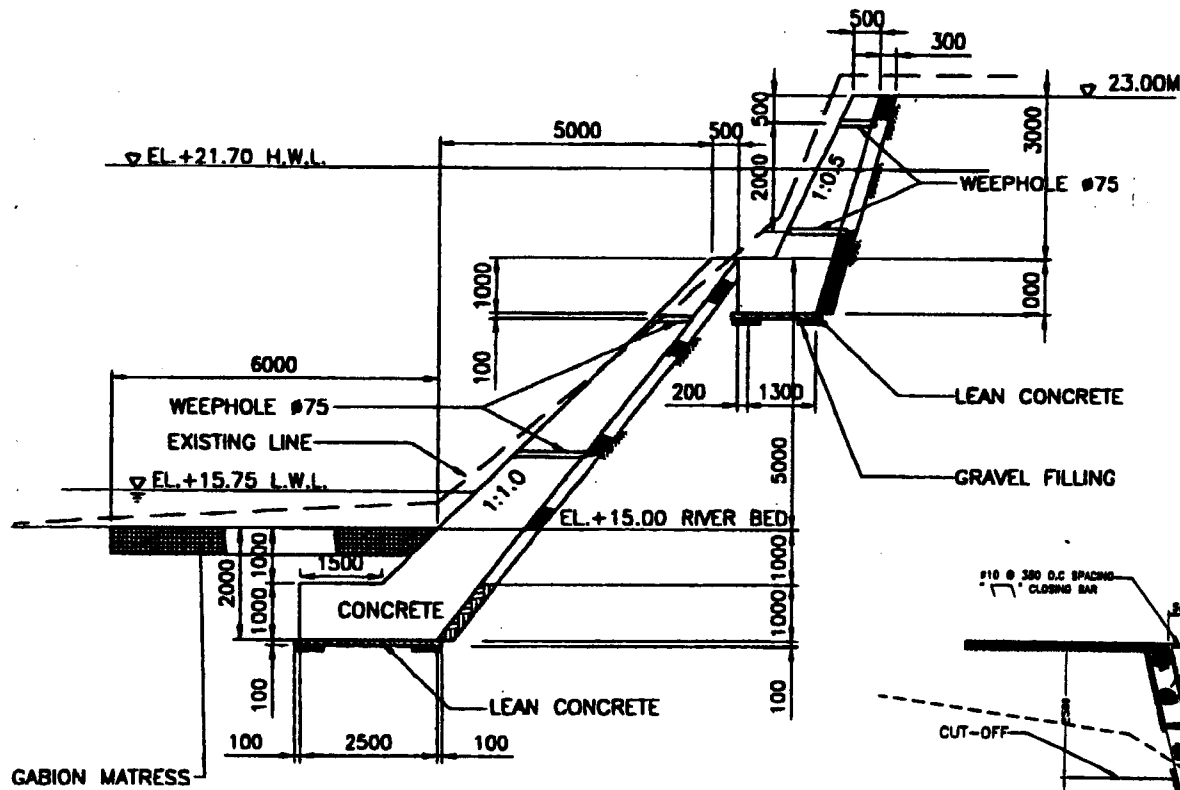


TOWER FOUNDATION
1/150

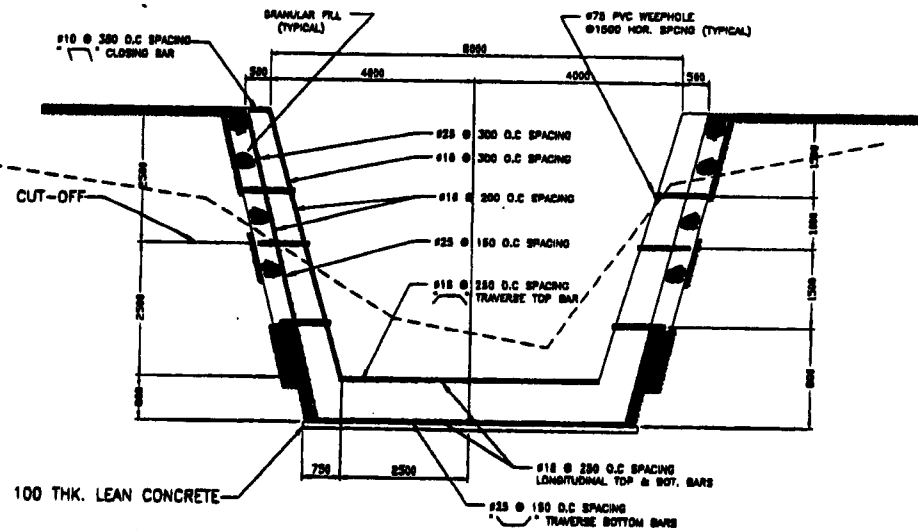
Fig. 2-26 NCR RELAY TOWER STANDARD SECTION PLAN

CONTRACTOR		CONSULTANTS		REPUBLIC OF THE PHILIPPINES		REHABILITATION OF THE FLOOD CONTROL OPERATION AND WARNING SYSTEM IN METRO MANILA		SHEET CONTENTS :		SCALE
PREPARED :	SUBMITTED :	RECOMMENDING APPROVAL :		DEPARTMENT OF PUBLIC WORKS AND HIGHWAYS	APPROVED :	NCR HEAD OFFICE		35m TRIANGULAR TOWER		SHEET NO.
DATE :	DATE :	DATE :		PROJECT MANAGEMENT OFFICE FOR MAJOR FLOOD CONTROL PROJECTS	DATE :	DRAWING NO. : T-NC-4				49

River protection structure Standard D.W.G

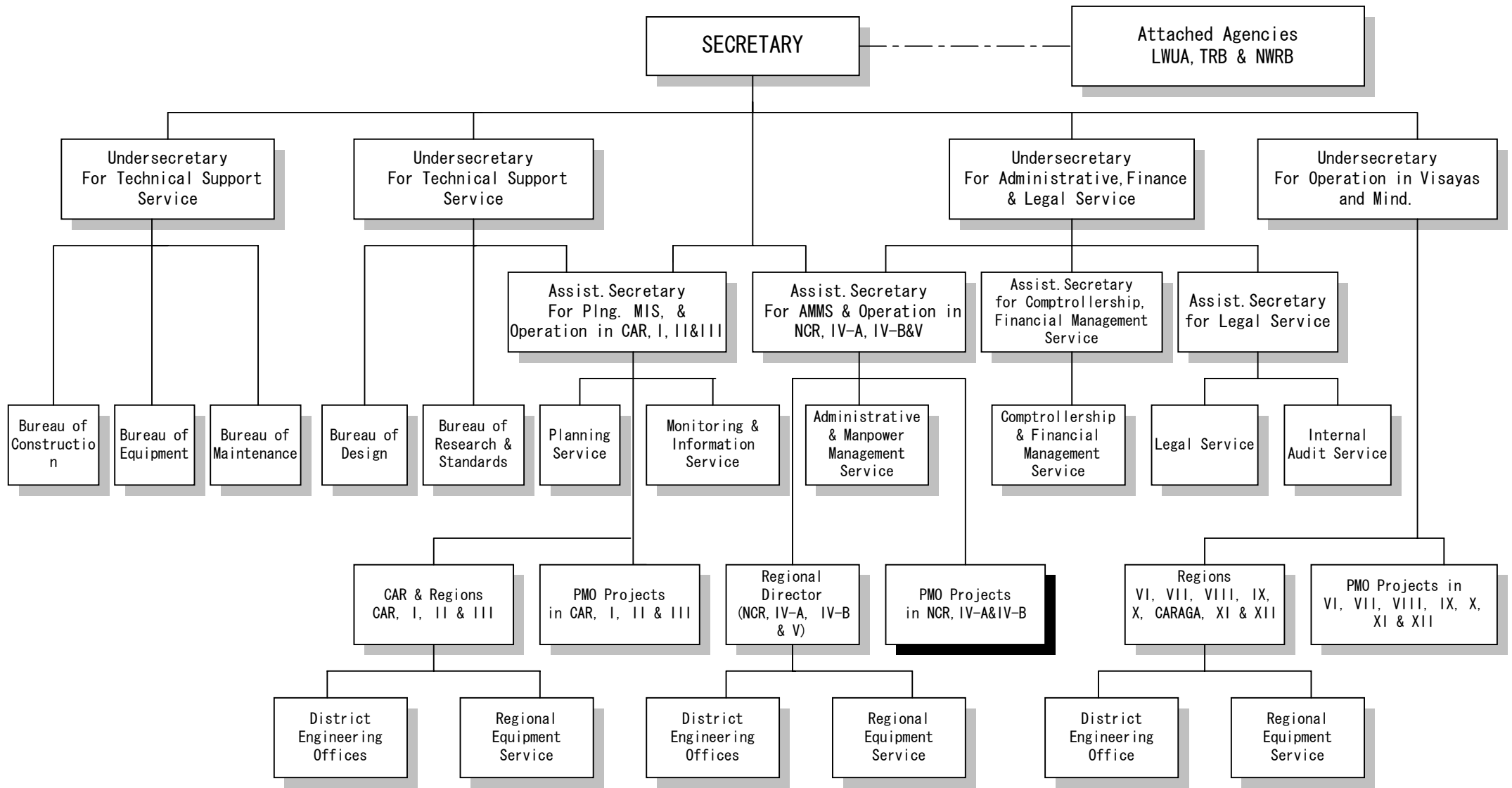


Retaining Wall Standard Section



Drainage Wall Standard Section

Fig. 2-27 RETAINING WALL AND DRAINAGE WALL STANDARD SECTION PLAN



CAR: Cordillera Autonomous Region

Fig. 2-28 ORGANIZATION CHART OF DPWH

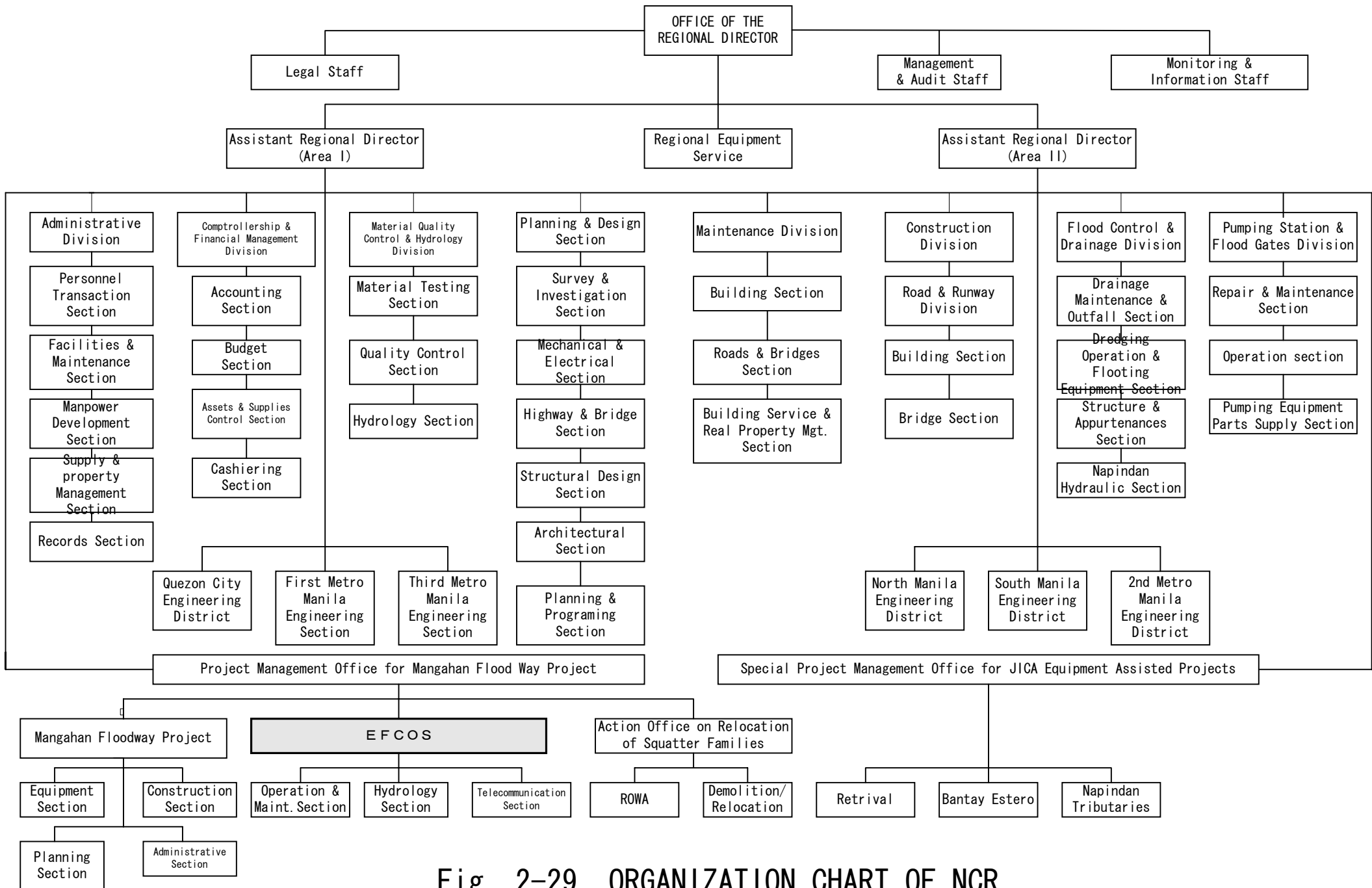


Fig. 2-29 ORGANIZATION CHART OF NCR

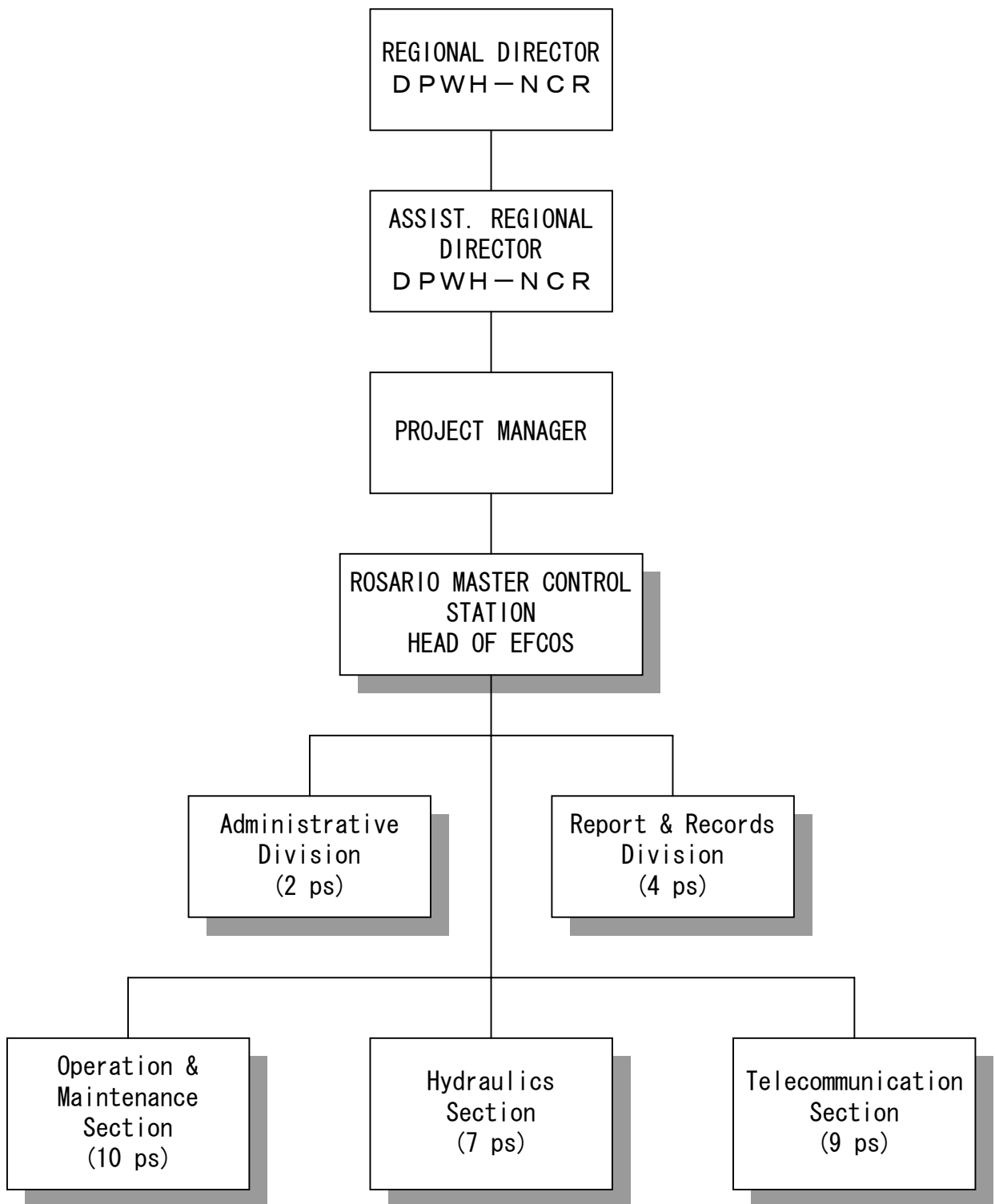


Fig. 2-30 ORGANIZATION CHART OF EFCOS

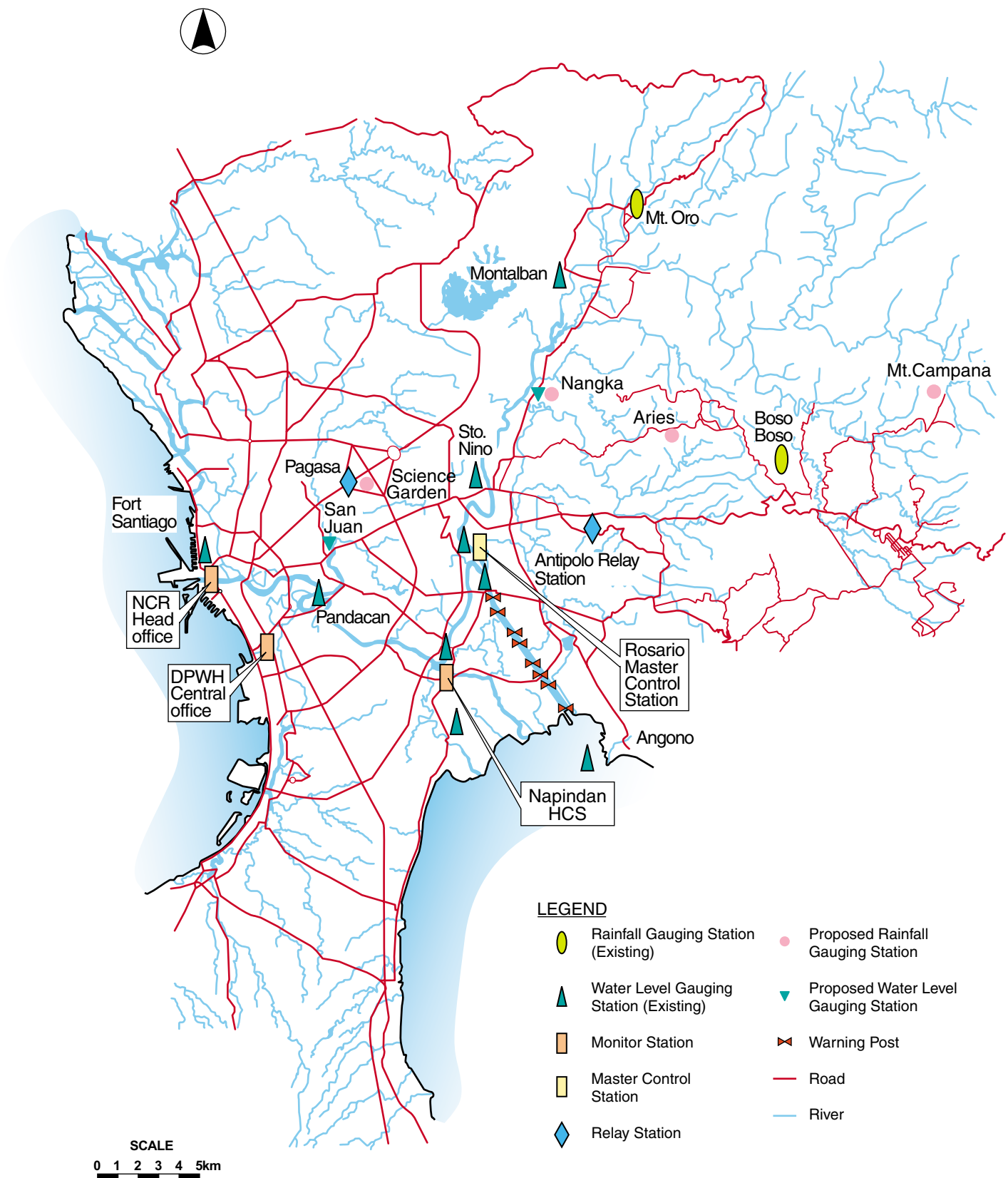


Fig. 3-1 MOBILIZATION ROUTE OF TELEMTRY EQUIPMENT