

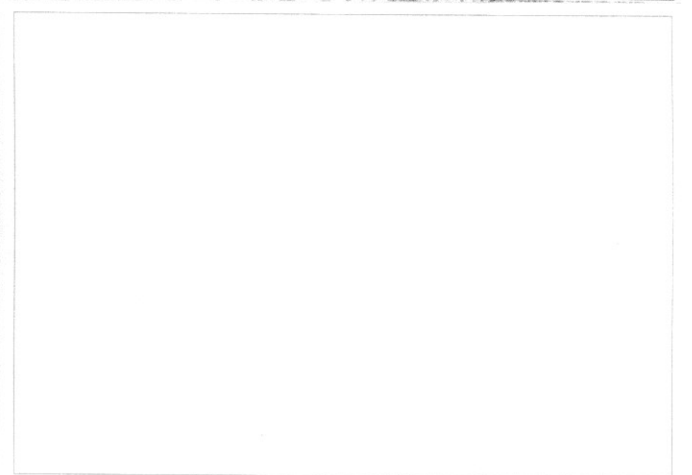
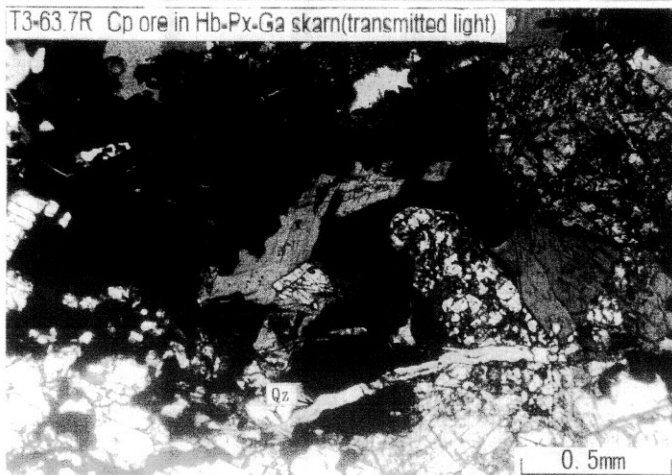
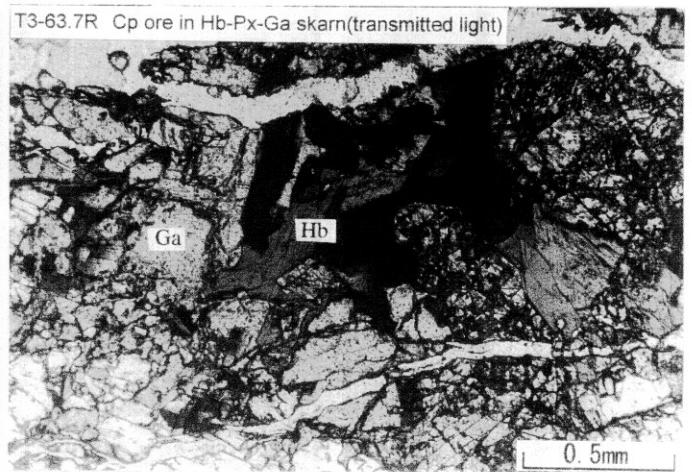
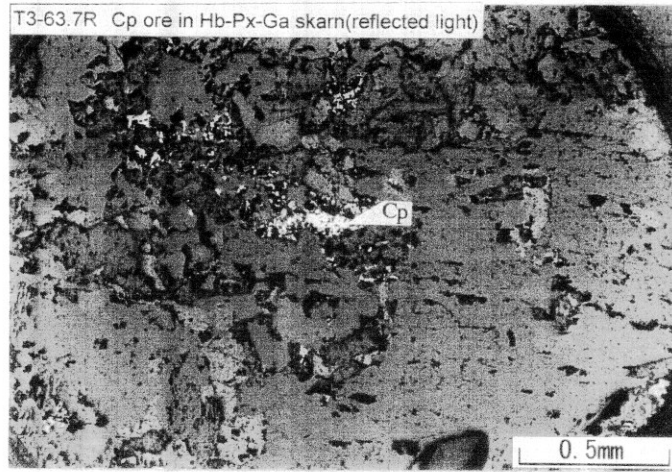
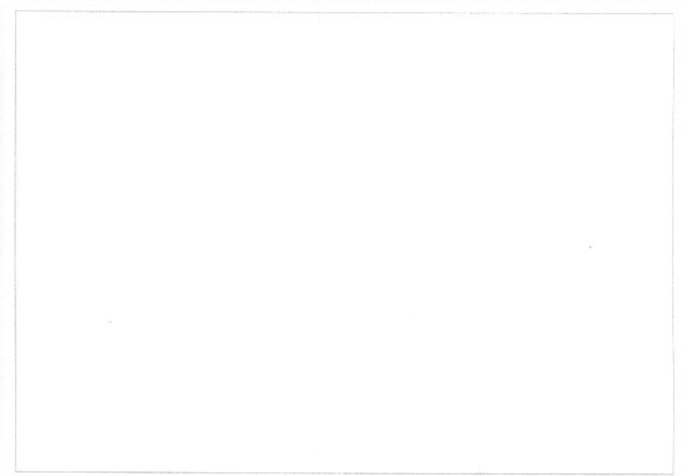
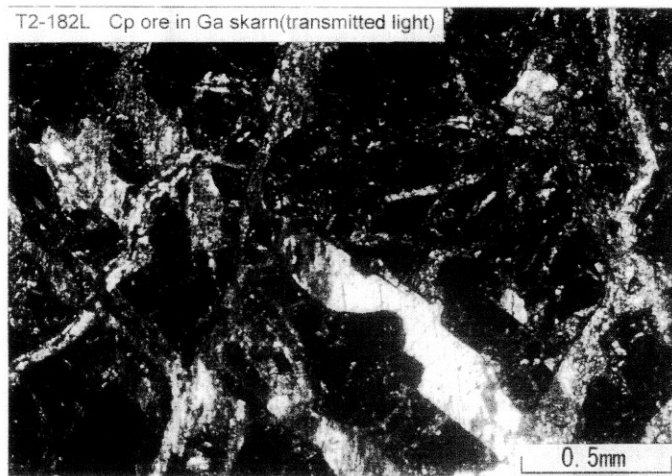
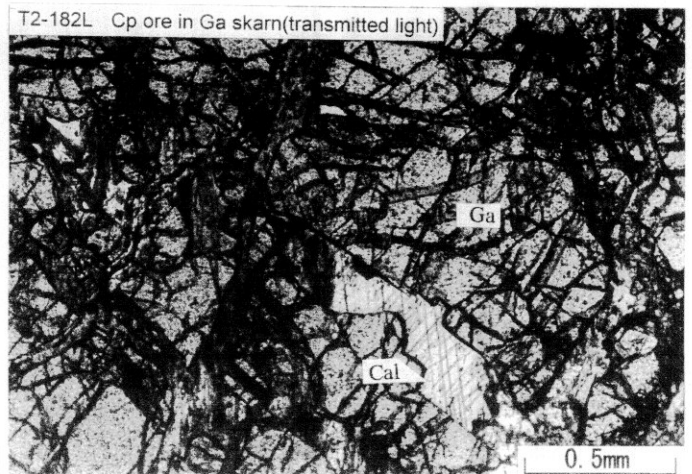
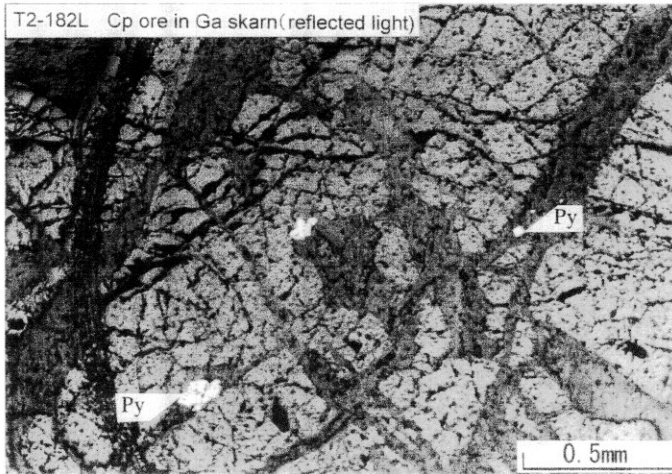
Appendix 16

Photomicrographs of the Polished Thin Sections for Mineral Separation Test

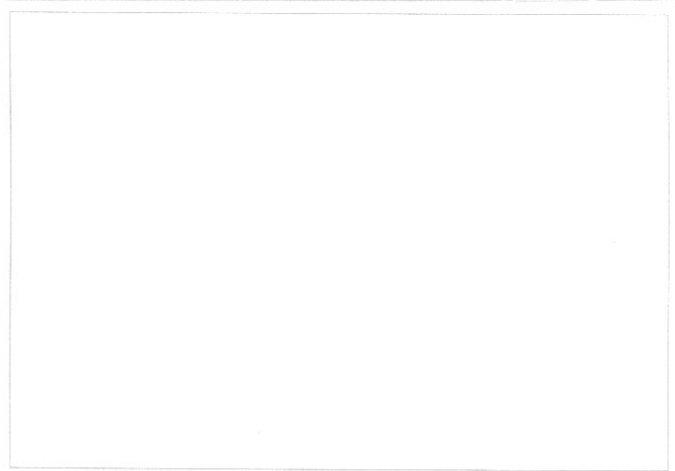
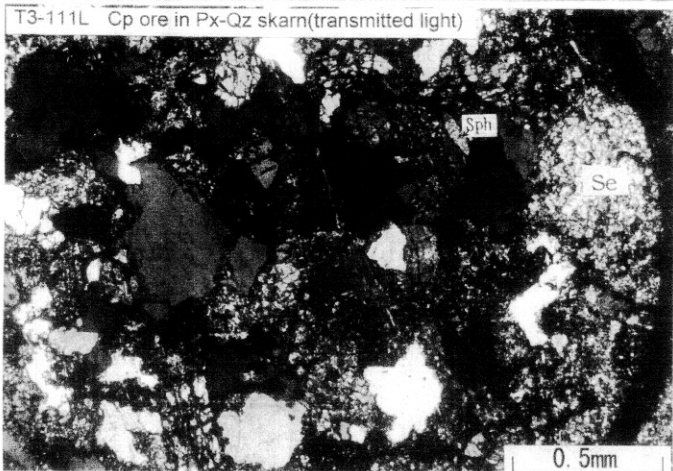
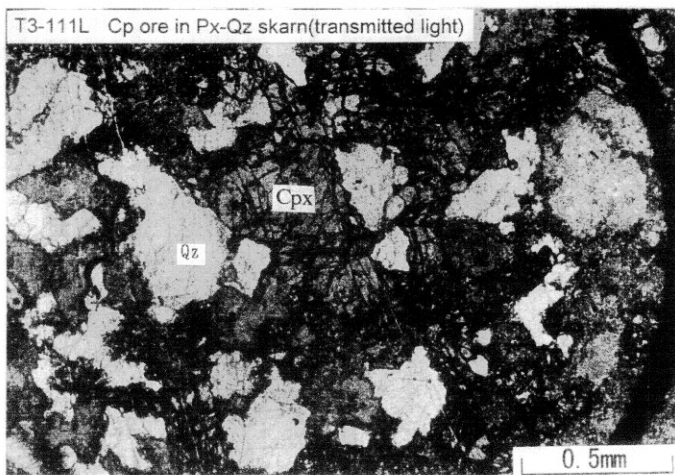
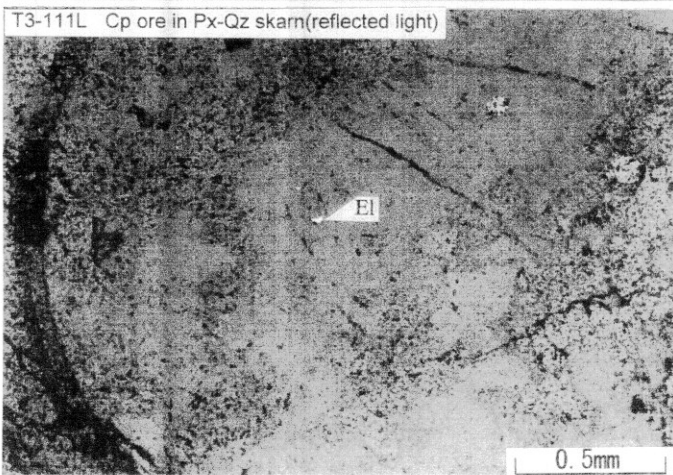
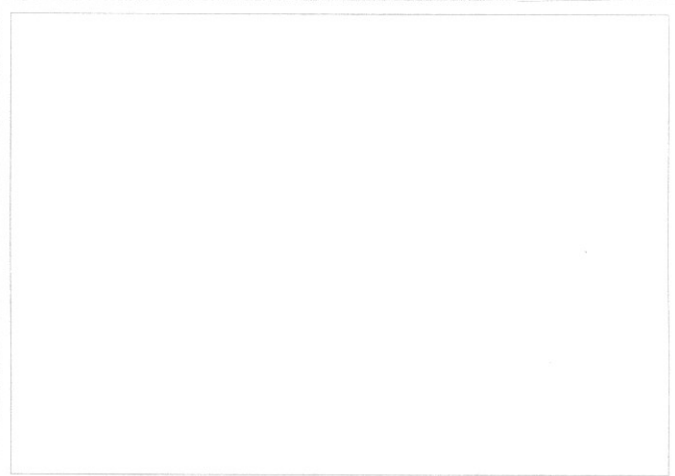
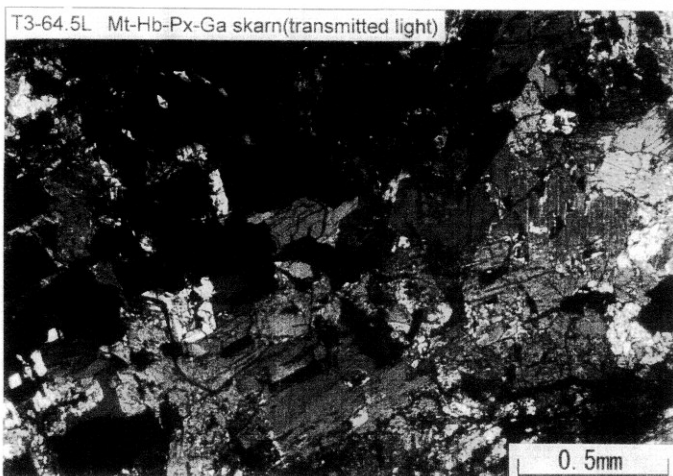
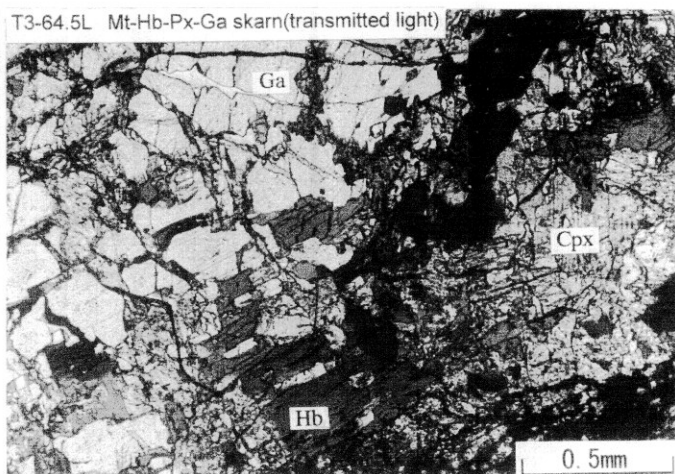
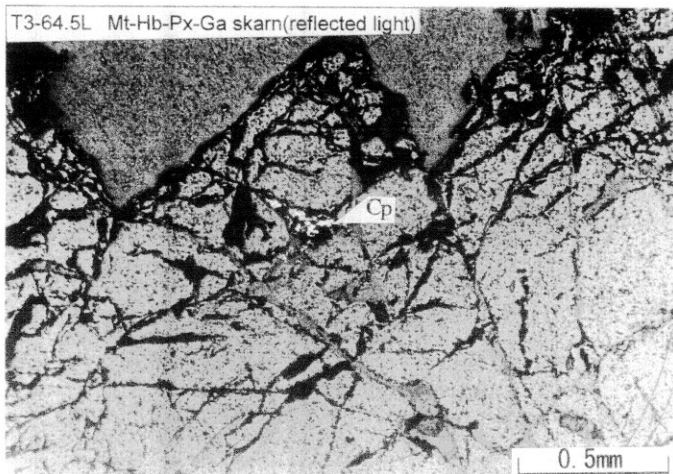
Abbreviations

Bn	:Bornite
Bt	:Biotite
Carb	:Carbonate
Cal	:Calcite
Ch	:Chlorite
Clah	:Clausthalite
Cp	:Chalcopyrite
Cpx	:Clinopyroxene
El	:Electrum
Ga	:Garnet
Grd	:Gersdorffite (Ni,Co) AsS
Hb	:Hornblende
Hc	:Hauchecornite $Ni_9Bi_2S_8$
Py	:Pyrite
Qz	:Quartz

Appendix 16 Photomicrographs of the Polished Thin Sections for Mineral Separation Test



Appendix 16 Photomicrographs of the Polished Thin Sections for Mineral Separation Test



Appendix 16 Photomicrographs of the Polished Thin Sections for Mineral Separation Test

