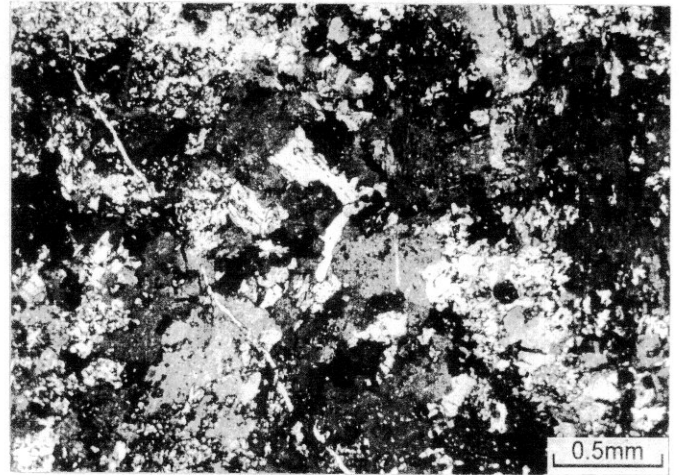
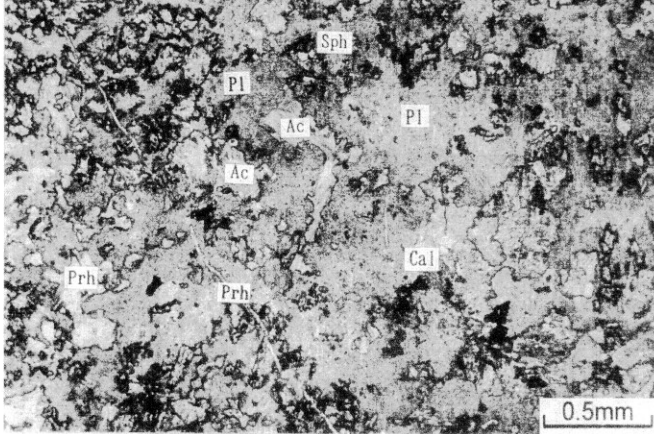


Appendix 3 Photomicrographs of the Thin Sections

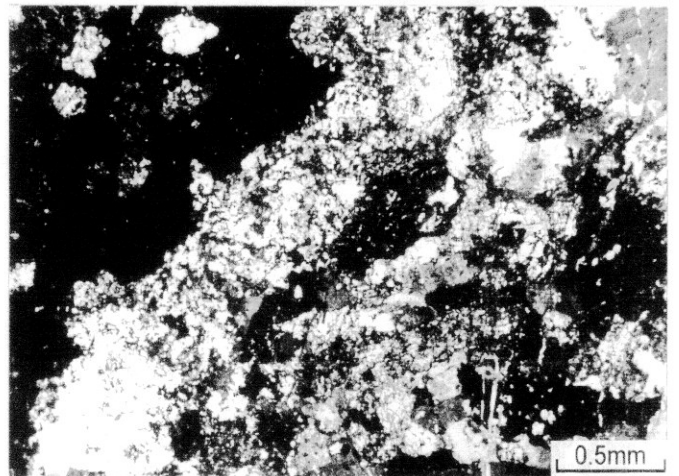
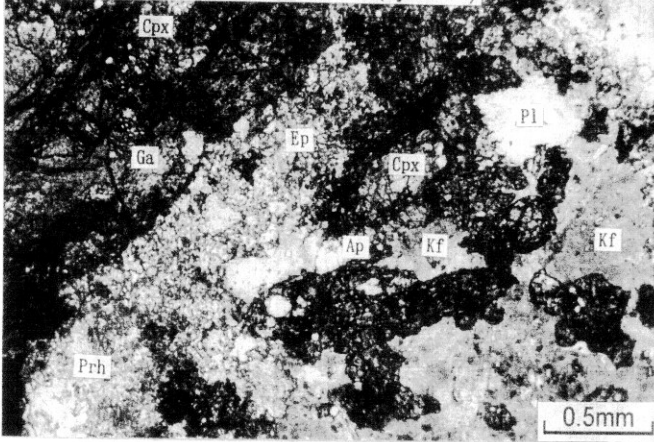
Plane polarized light

Crossed polarized light

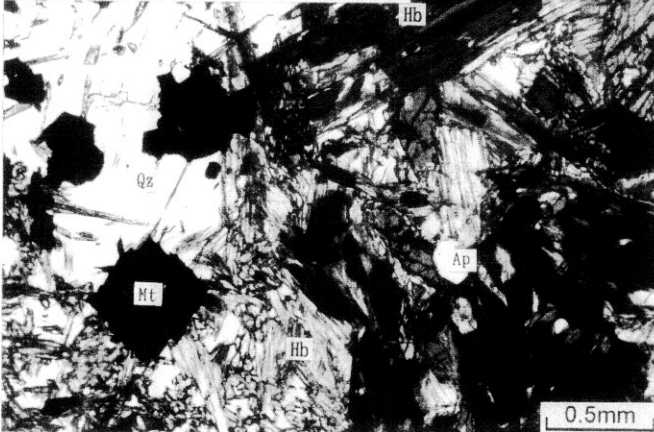
MJKA-15 (109m) : Altered anorthosite or gabbro



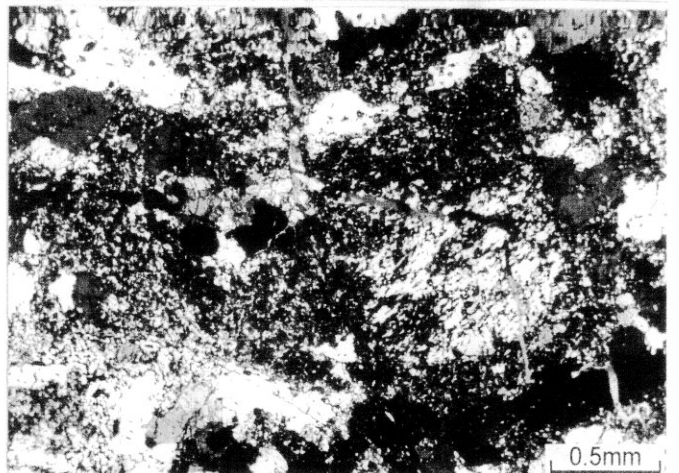
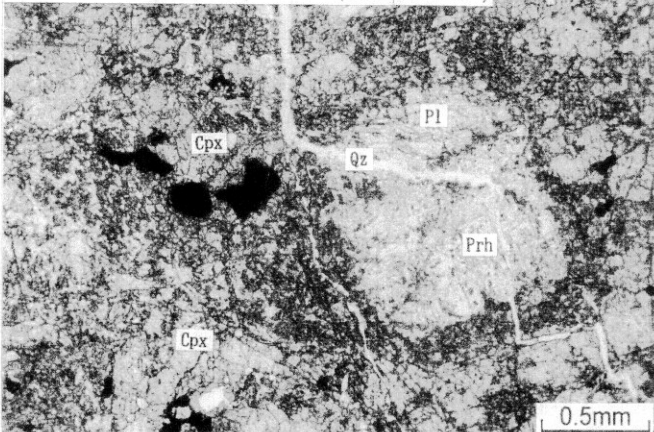
MJKA-16 (27.2m) : Ga-Cpx skarn (syenite?)



MJKA-16 (105m) : Mt-Hb-Cal-Qz vein



MJKA-16 (109m) : Cpx skarn (Granodiorite?)

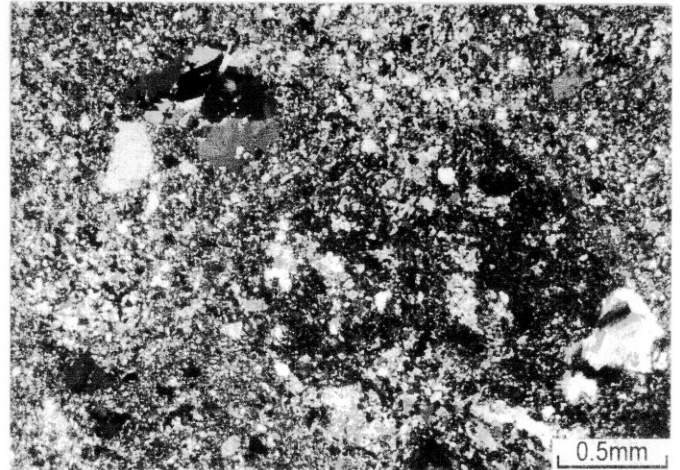
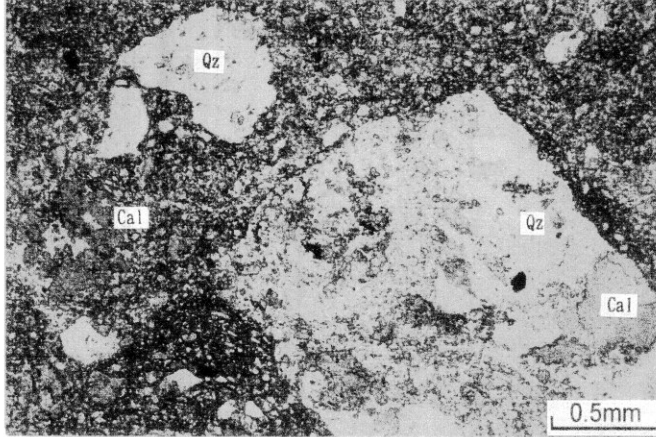


Appendix 3 Photomicrographs of the Thin Sections

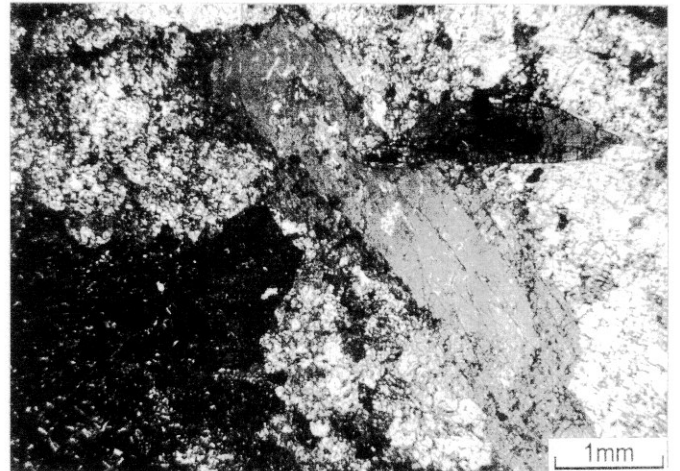
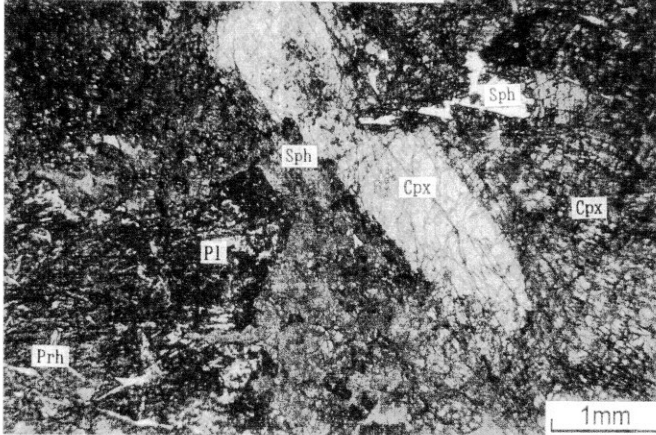
Plane polarized light

Crossed polarized light

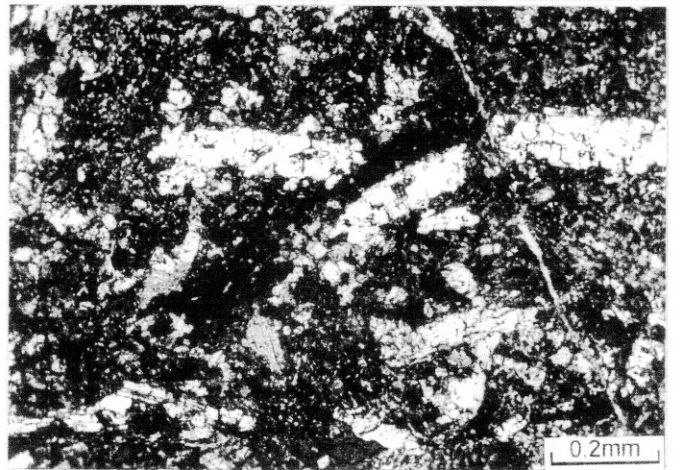
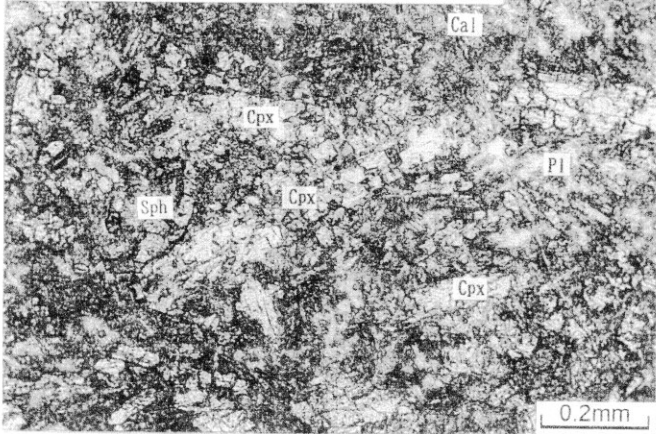
MJKA-16 (117.3m) : Qz-Cal rock (Brecciated, silicified limestone?)



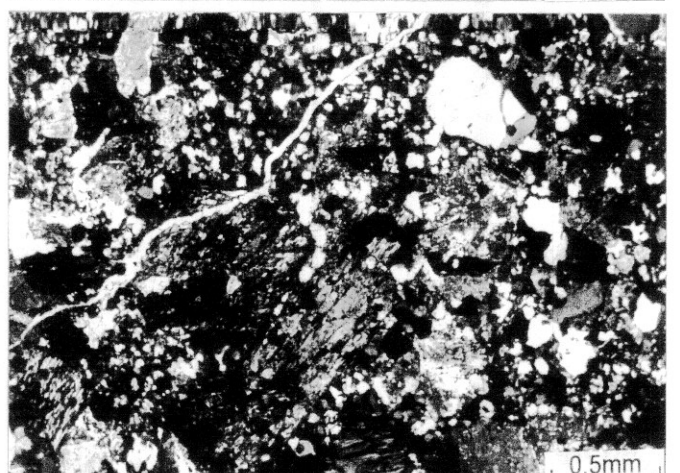
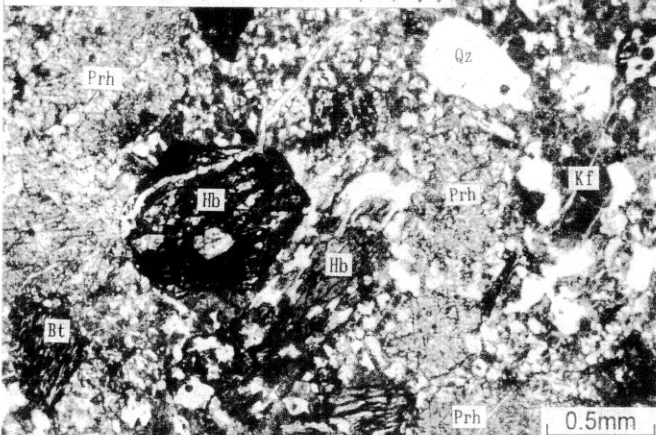
MJKA-17 (71.1m) : Cpx skarn (Gabbro?)



MJKA-17 (90.3m) : Cpx skarn (Lamprophyre?)



MJKA-17 (126.2m) : Granodiorite porphyry



Appendix 3 Photomicrographs of the Thin Sections

Plane polarized light

Crossed polarized light

