

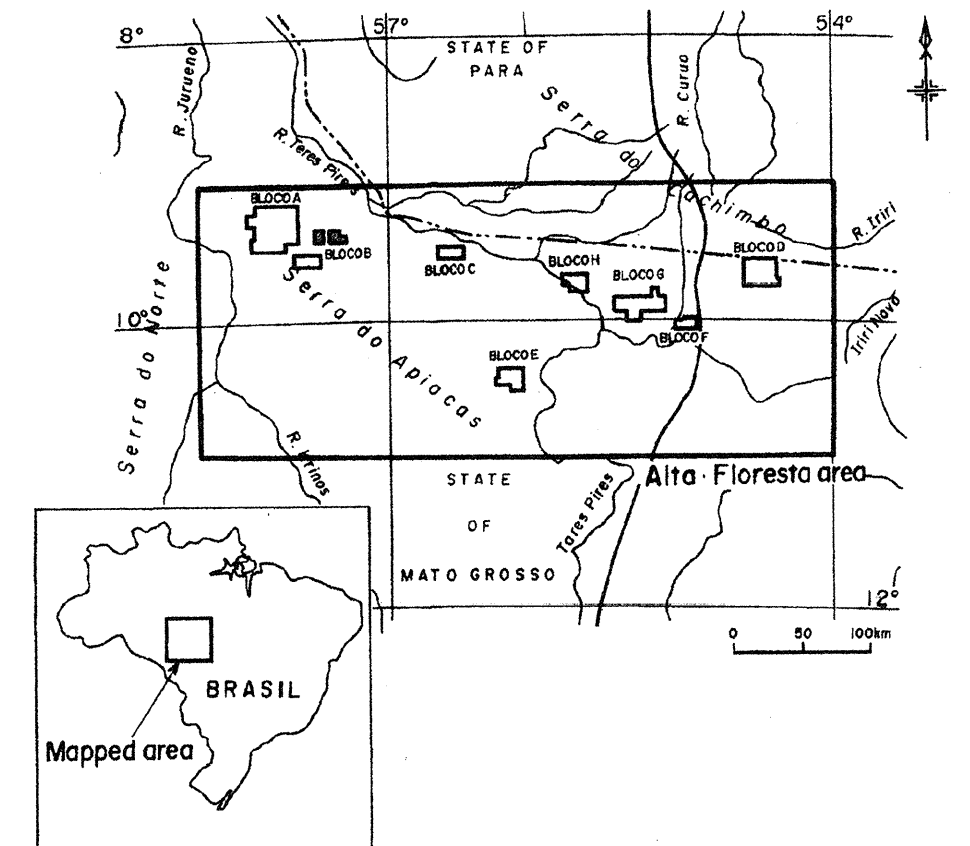
Plates

List of plates

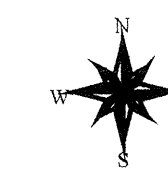
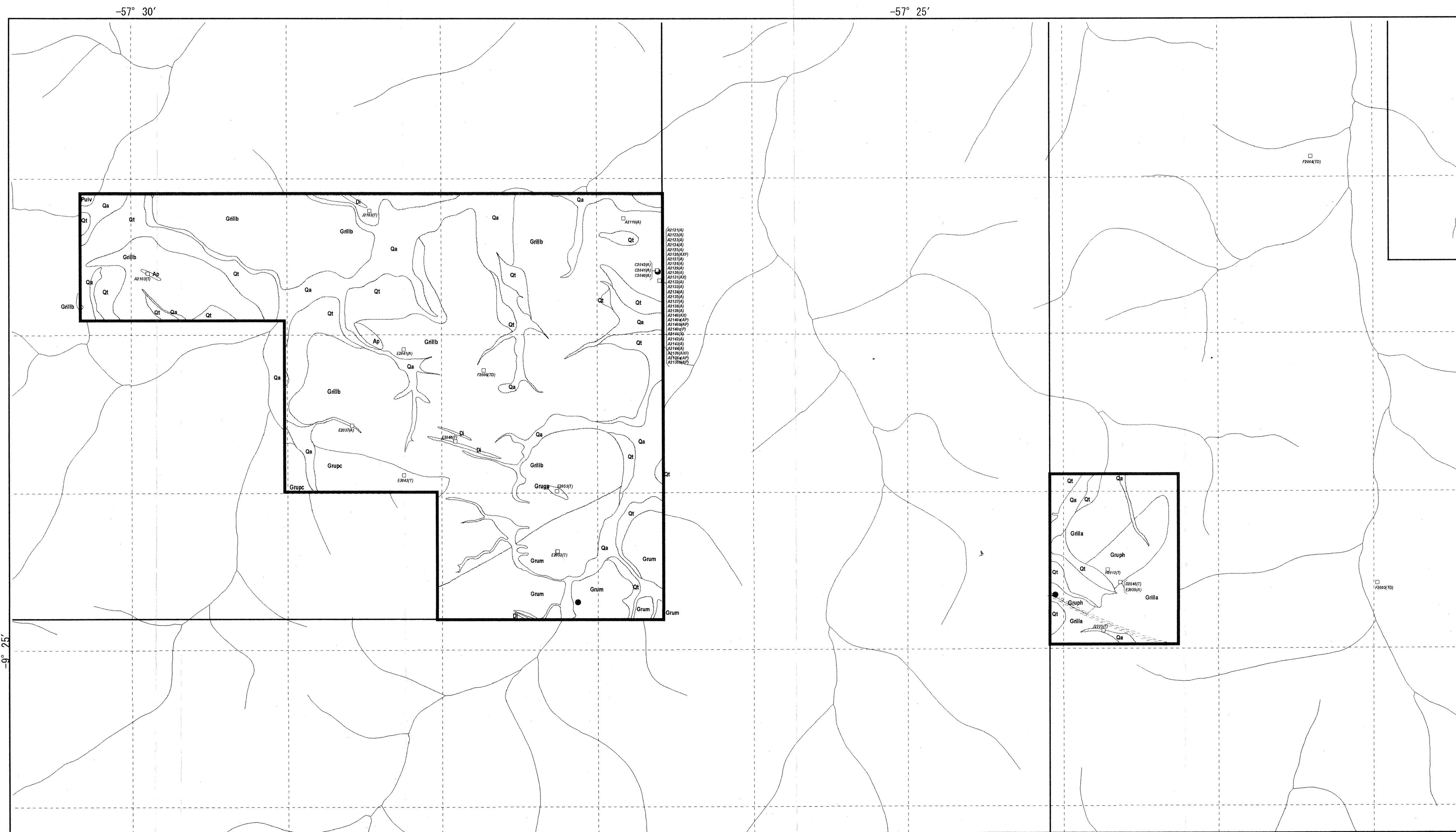
- Plate II-1-1 Sample location in Block B
- Plate II-1-2 Location map of soil and auger geochemical samples in Block B
- Plate II-1-3 Sample location in Block B South
- Plate II-2-1 Sample location in Block C
- Plate II-2-2 Location map of soil and auger geochemical samples in Block C
- Plate II-3-1 Geological map and cross section of the Serrinha do Guaranta in the Block F
- Plate II-3-2 Geological map and cross section of the Garimpo Aluizio in the Block F
- Plate II-3-3 Sample location in Block F
- Plate II-3-4 Location map of soil samples in Block F
- Plate II-4-1 Sample location in Block G
- Plate II-4-2 Location map of soil samples in Block G

REPORT ON THE MINERAL EXPLORATION
IN
THE ALTA FLORESTA AREA,
FEDERATIVE REPUBLIC OF BRAZIL
PHASE II

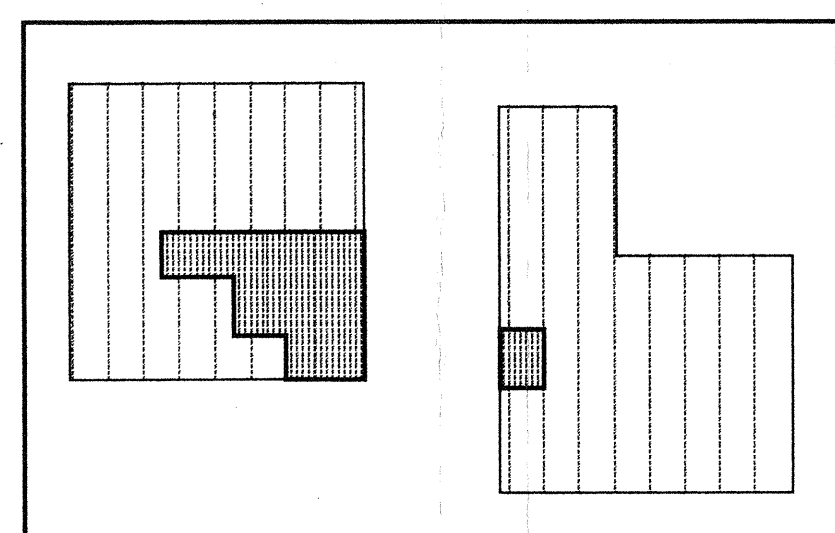
Sample location in Block B



JAPAN INTERNATIONAL COOPERATION AGENCY
METAL MINING AGENCY OF JAPAN
FEBRUARY, 2000



9° 25'



Location of Phase II survey area

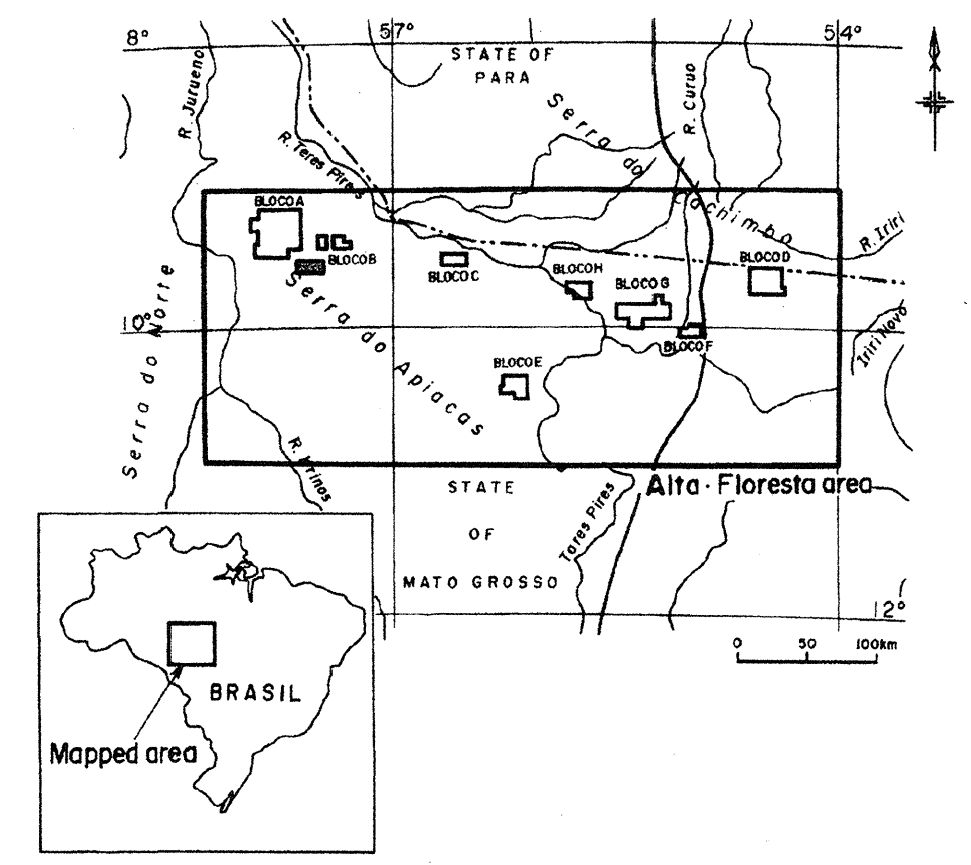


LEGEND

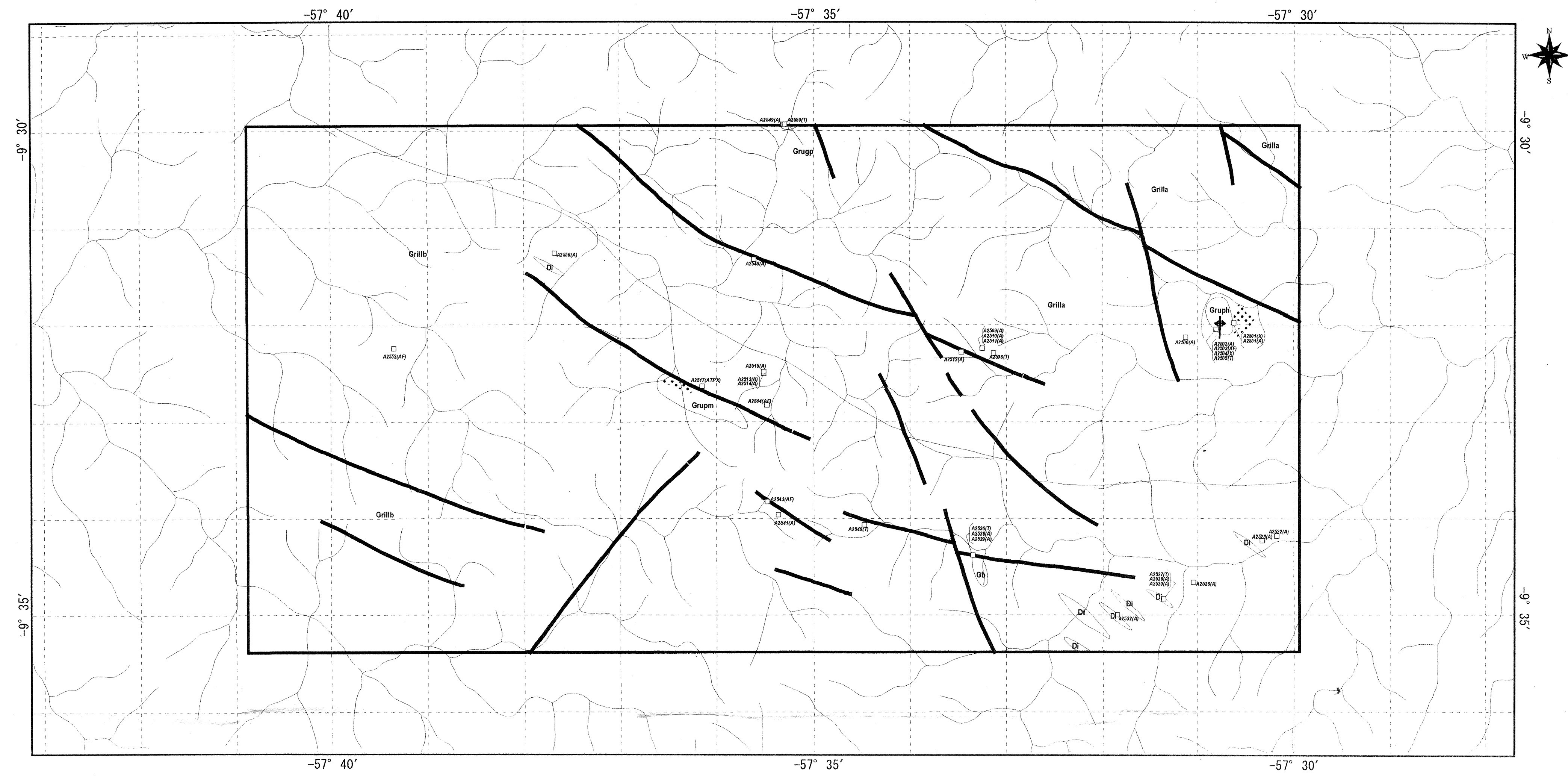
- | | | | | | | | | |
|---------------------|---------------|---|----------------|---------------|-------------------------|-------------------------------|-----------------|----------------|
| Quaternary | Qa | Gravels, sand, silt and clay. | Dyke rock | Ap | Aprite to fine granite. | Sample location | □ | Claim boundary |
| Alluvial deposits | Qt | Gravels, sand, silt and clay. | Di | Diabase. | A2035 | | Analyzed sample | □ |
| Terrace deposits | | | Structure | --- | | T: Thin section | --- | River |
| Uatuma Group | Grupc | Coarse, pinkish, potassium feldspar porphyritic, granite porphyry like, biotite granite. | --- | sheared zone. | | P: Polished section | | |
| Teles Pires Granite | Grum | Medium grained, biotite granite. | Mineralization | ● | | X: X-ray diffraction analysis | | |
| Granite | Grupg | Biotite granite porphyry | | □ | | F: Fluid inclusion | | |
| | Gruph | Coarse grained, quartz and potassium feldspar porphyritic, hornblende bearing biotite granodiorite. | | | | D: Dating | | |
| Iriti Formation | Puiv | Acidic volcanic rocks: biotite rhyolite and dacite. | | | | A: Ore assay | | |
| Pre-Uatuma Granite | Grillb | Medium grained, pinkish, potassium feldspar porphyritic, biotite granite. | | | | | | |
| | Grilla | Medium grained, hornblende bearing biotite granite. | | | | | | |

REPORT ON THE MINERAL EXPLORATION
IN
THE ALTA FLORESTA AREA,
FEDERATIVE REPUBLIC OF BRAZIL
PHASE II

Sample location in Block B South



JAPAN INTERNATIONAL COOPERATION AGENCY
METAL MINING AGENCY OF JAPAN
FEBRUARY, 2000

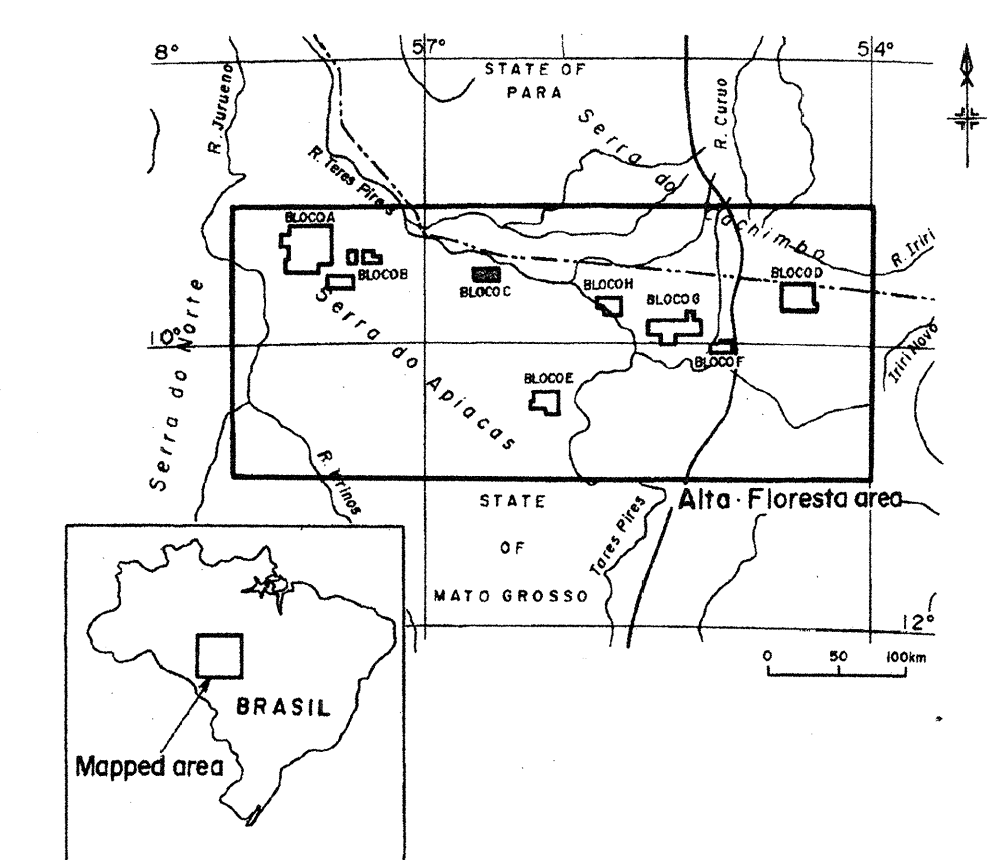


LEGEND

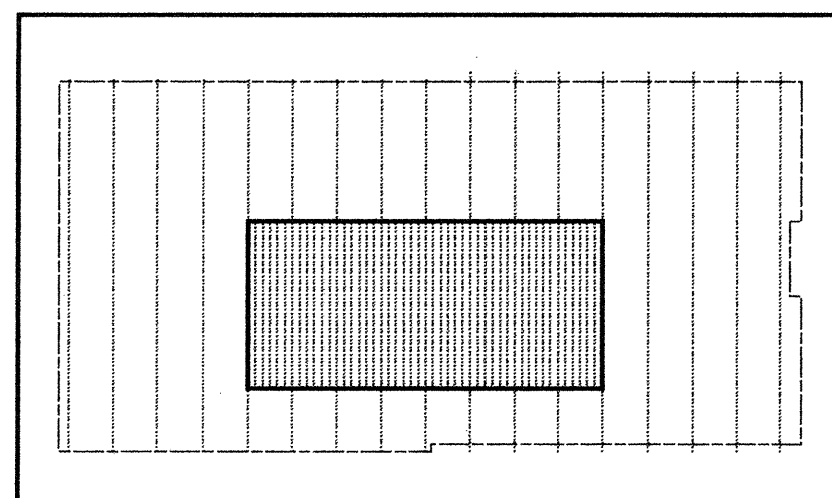
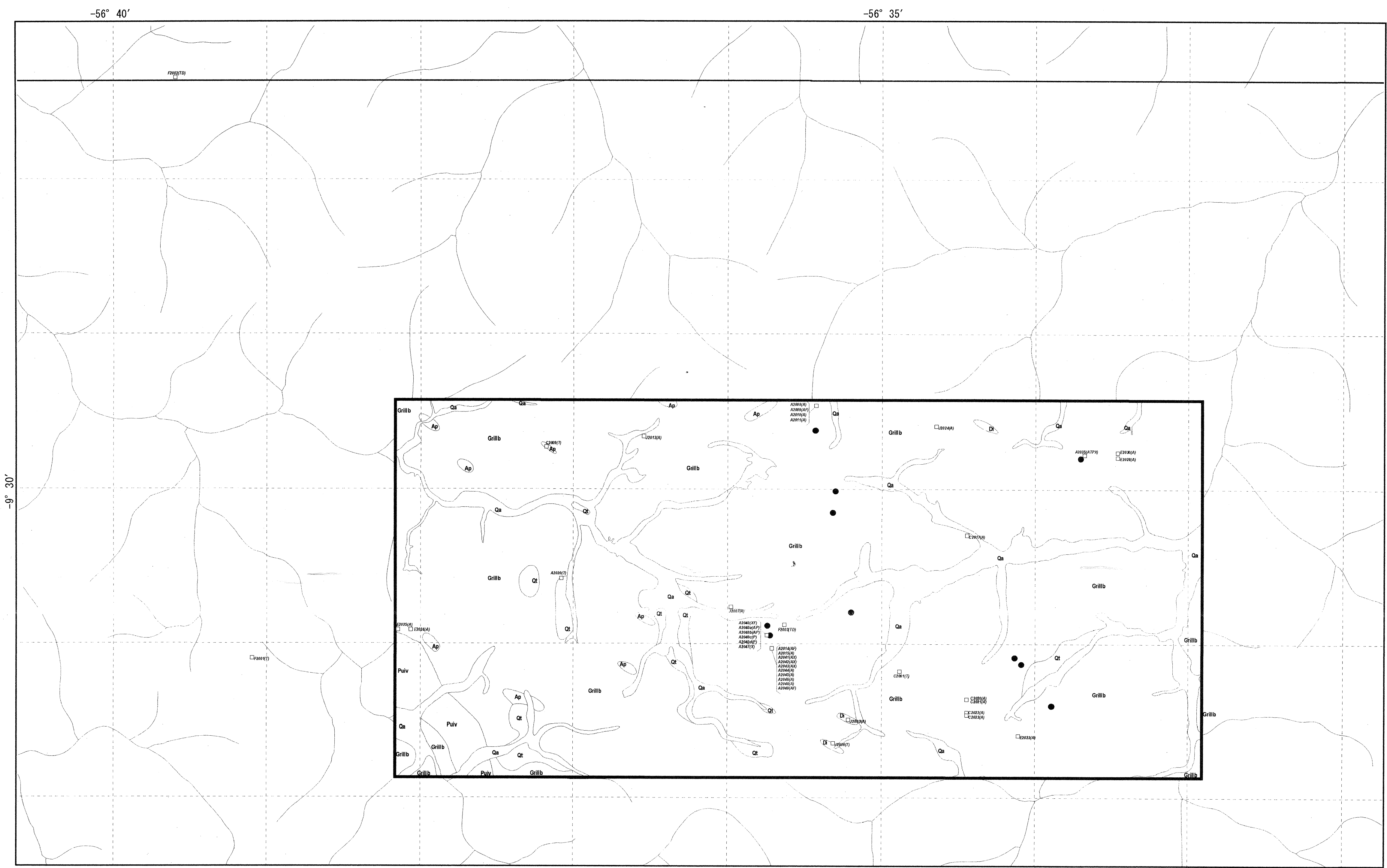
- | | | |
|--|--|---|
| <p>Quaternary</p> <p>Alluvial deposits Qa Gravels, sand, silt and clay. Alluvial gaimpo existing.</p> | <p>Dyke rock</p> <p>Di Diabase.</p> <p>Gb Gabbro.</p> | <p>Sample location</p> <p>A2035 Analyzed sample</p> <p>□ T: Thin section</p> <p>□ P: Polished section</p> <p>□ X: X-ray diffraction analysis</p> <p>□ F: Fluid inclusion</p> <p>□ D: Dating</p> <p>□ A: Ore assay</p> |
| <p>Uatuma Group</p> <p>Teles Pires Granite</p> <p>Grupp Granite porphyry</p> <p>Grupm Medium grained, light pinkish, potassium feldspar porphyritic, biotite granite.</p> <p>Gruph Coarse grained, quartz and potassium feldspar porphyritic, hornblende bearing biotite granodiorite.</p> | <p>Structure</p> <p>— Fault and lineament.</p> | <p>Mineralization</p> <p>□ Mineralized area.</p> <p>□ Quartz vein.</p> |
| <p>Pre-Uatuma Granite</p> <p>Grillb Medium grained, pinkish, potassium feldspar porphyritic, biotite granite.</p> <p>Grilla Medium grained, hornblende bearing biotite granite.</p> | <p>— Claim boundary</p> <p>□ Phase II survey area</p> <p>— River</p> | |

REPORT ON THE MINERAL EXPLORATION
IN
THE ALTA FLORESTA AREA,
FEDERATIVE REPUBLIC OF BRAZIL
PHASE II

Sample location in Block C



JAPAN INTERNATIONAL COOPERATION AGENCY
METAL MINING AGENCY OF JAPAN
FEBRUARY, 2000



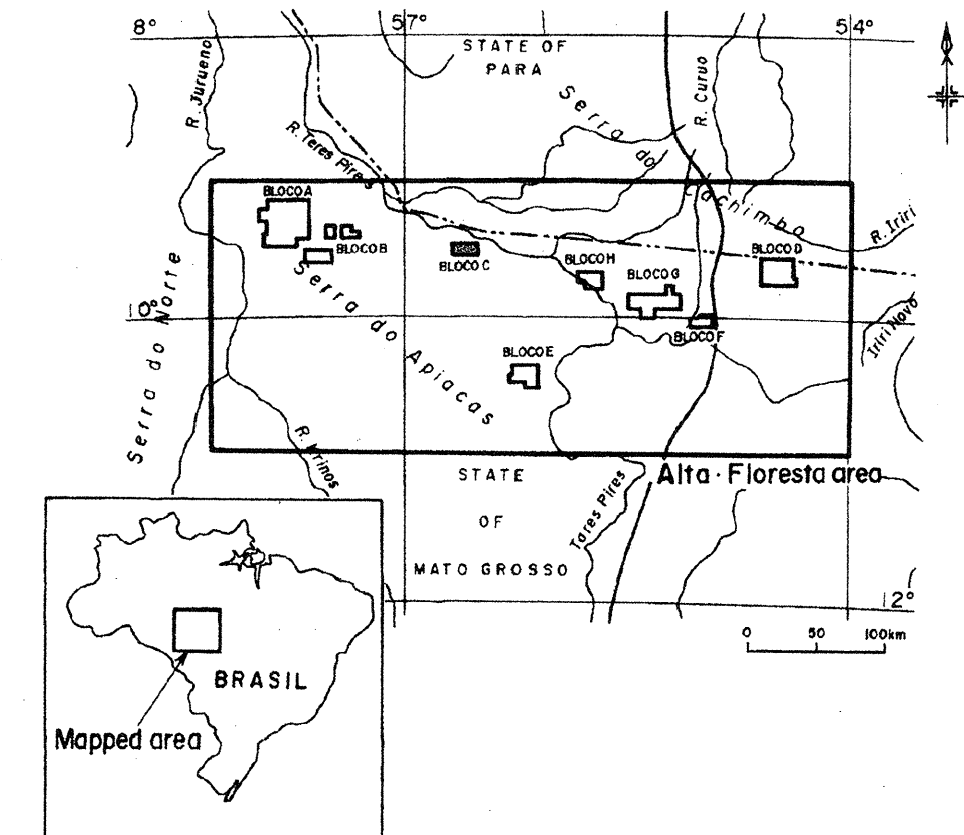
Location of Phase II survey area

LEGEND

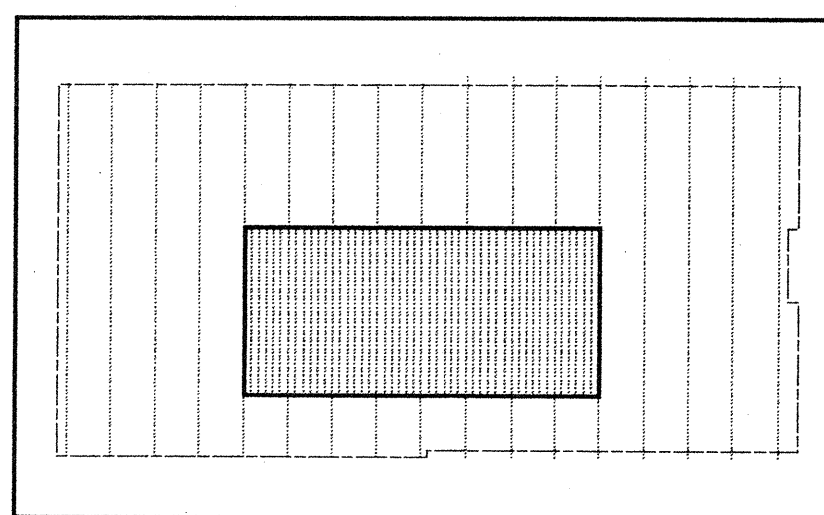
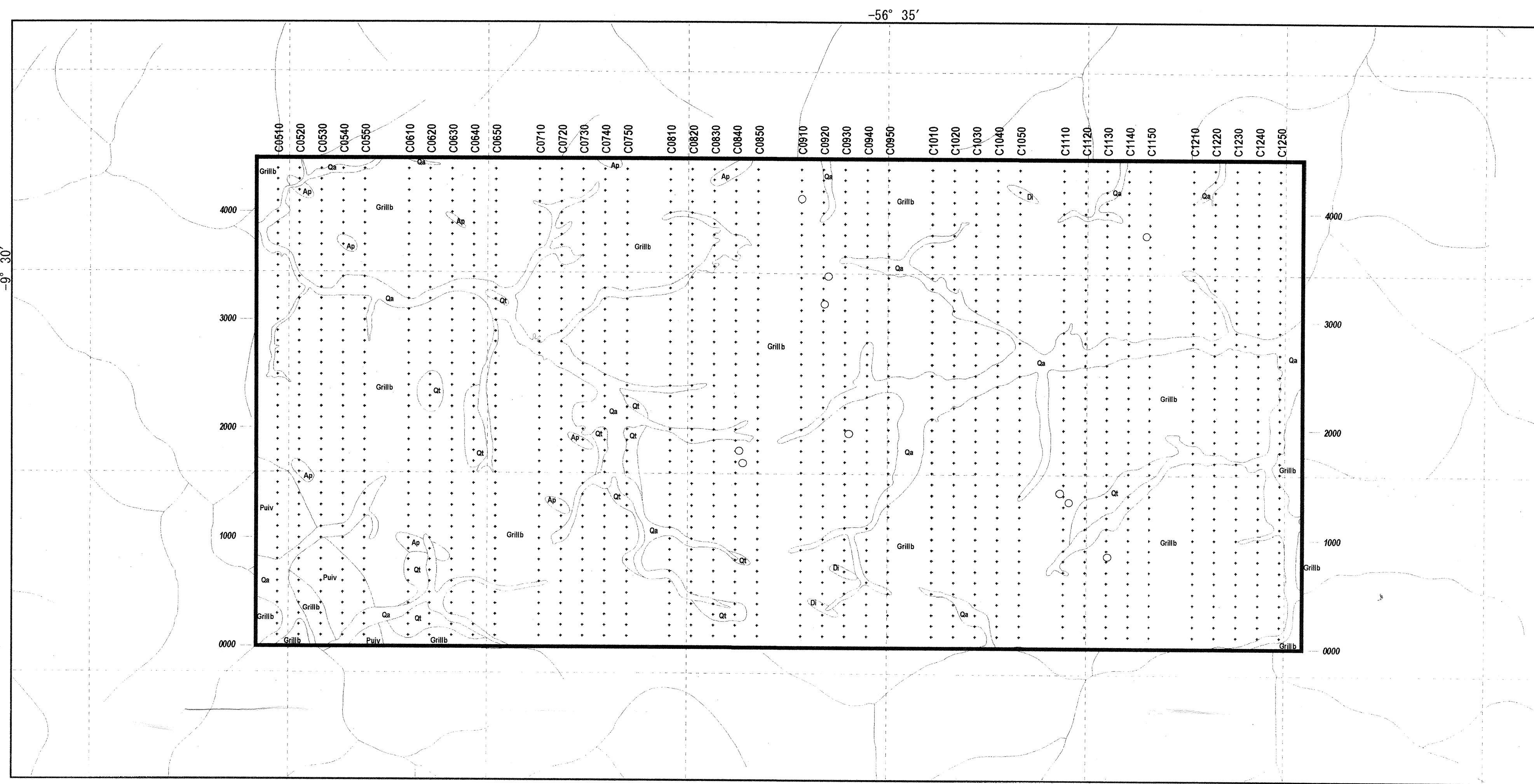
- | | | |
|---|--|---|
| <p>Quaternary</p> <p>Alluvial deposits Qa Gravels, sand, silt and clay.</p> <p>Terrace deposits Qt Gravels, sand, silt and clay.</p> <p>Uatuma Group</p> <p>Iri Formation Puiv Acidic volcanic rocks: biotite rhyolite and dacite.</p> <p>Pre-Uatuma Granite</p> <p>Grillb Coarse grained, potassium feldspar porphyritic, biotite granite with weak Ep-Chl alteration and Py dissemination.</p> | <p>Dyke rock</p> <p>Ap Aprite to fine granite.</p> <p>Di Diabase.</p> <p>Structure</p> <p>sheared zone.</p> <p>Mineralization</p> <p>Primary garimpo.</p> <p>Alluvial garimpo.</p> | <p>Sample location</p> <p>A2035 Analyzed sample</p> <p>T Thin section</p> <p>P Polished section</p> <p>X X-ray diffraction analysis</p> <p>F Fluid inclusion</p> <p>D Dating</p> <p>A Ore assay</p> <p>Claim boundary</p> <p>Phase II survey area</p> <p>River</p> |
|---|--|---|

REPORT ON THE MINERAL EXPLORATION
IN
THE ALTA FLORESTA AREA,
FEDERATIVE REPUBLIC OF BRAZIL
PHASE II

Location map of soil and auger
geochemical samples in Block C



JAPAN INTERNATIONAL COOPERATION AGENCY
METAL MINING AGENCY OF JAPAN
FEBRUARY, 2000



Location of Phase II survey area

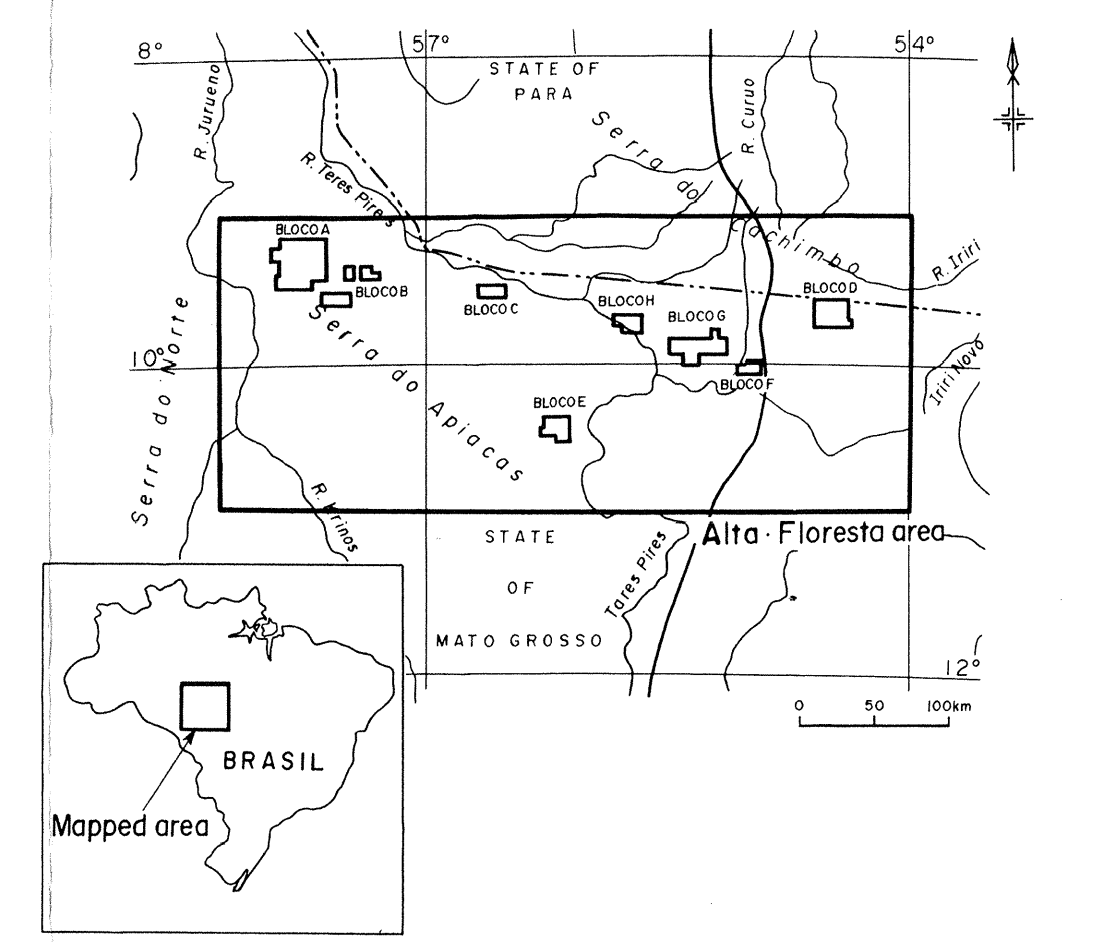


LEGEND

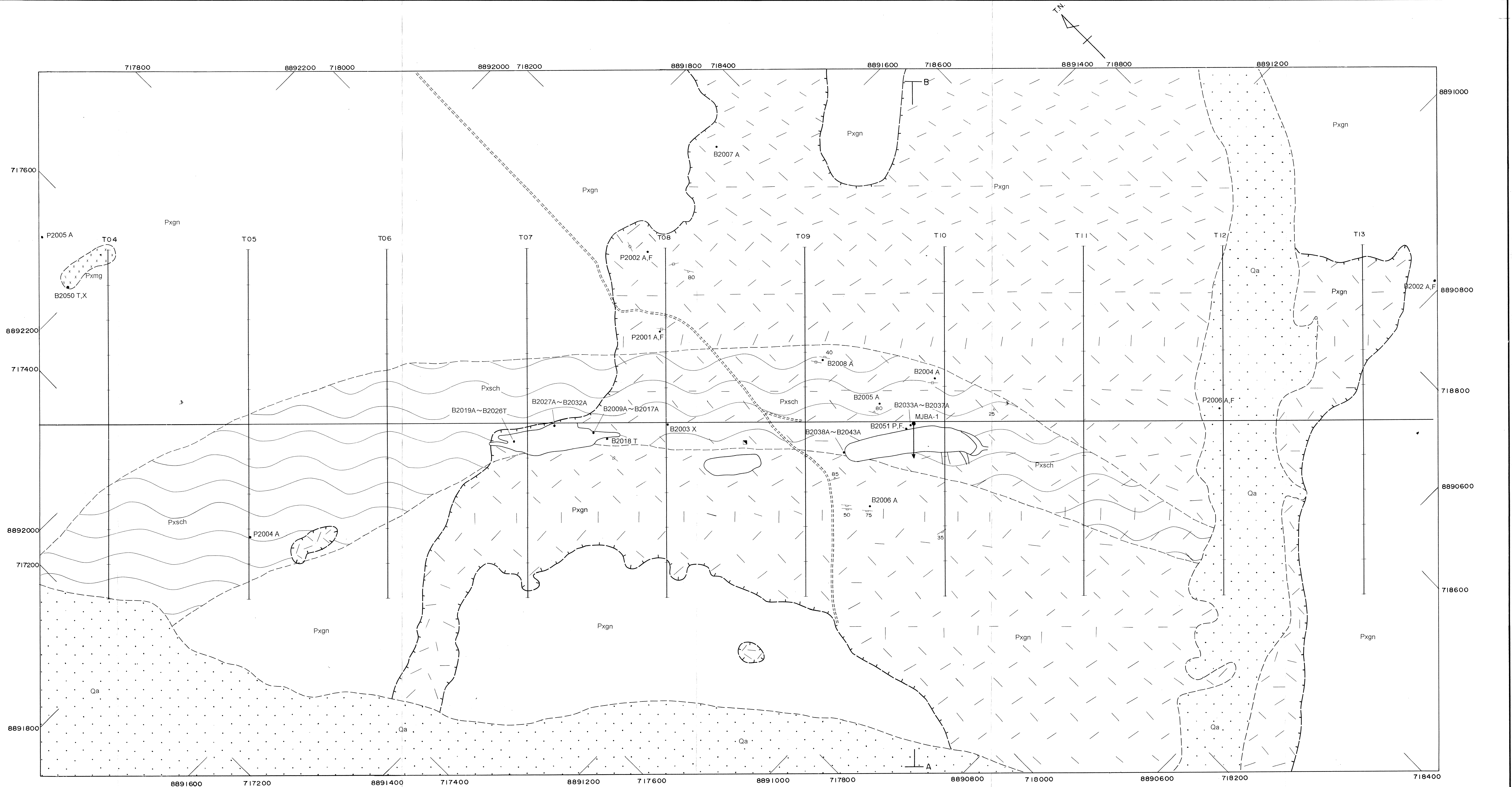
- | | | |
|--|--|--|
| <p>Quaternary</p> <p>Alluvial deposits Qa Gravels, sand, silt and clay.</p> <p>Terrace deposits Qt Gravels, sand, silt and clay.</p> <p>Uatuma Group</p> <p>Iri Formation Puiv Acidic volcanic rocks: biotite rhyolite and dacite.</p> <p>Pre-Uatuma Granite</p> <p>Grillb Coarse grained, potassium feldspar porphyritic, biotite granite with weak Ep-Chl alteration and Py dissemination.</p> | <p>Dyke rock</p> <p>Ap Aprite to fine granite.</p> <p>Di Diabase.</p> <p>Structure</p> <p>sheared zone.</p> <p>Mineralization</p> <p>● Primary garimpo.</p> <p>□ Alluvial garimpo.</p> | <p>Sampling Point</p> <p>Line name</p> <p>Sampling point</p> <p>Sample number</p> <p>Claim boundary</p> <p>Phase II survey area</p> <p>River</p> |
|--|--|--|

REPORT ON THE MINERAL EXPLORATION
IN
THE ALTA FLORESTA AREA,
FEDERATIVE REPUBLIC OF BRAZIL
PHASE II

Geological map and cross section of the
Serrinha do Guaranta in the Block F



JAPAN INTERNATIONAL COOPERATION AGENCY
METAL MINING AGENCY OF JAPAN
FEBRUARY, 2000

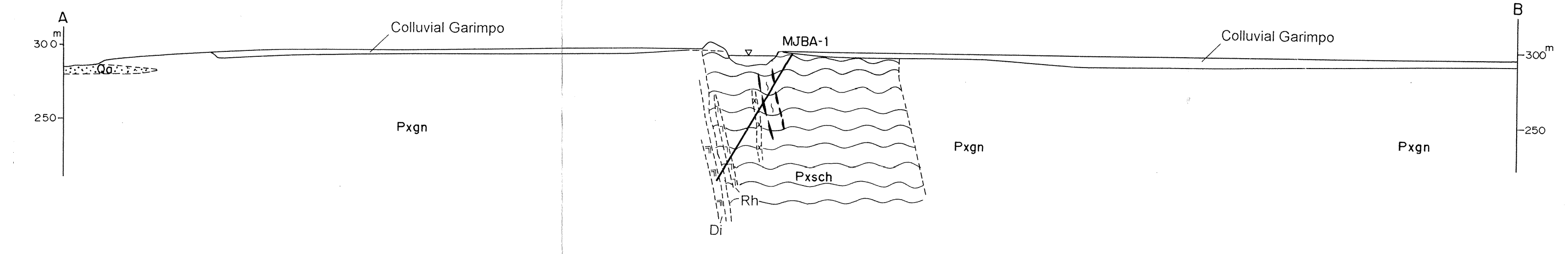


EON	ERA	COLUMNAR SECTION	STRATIGR. UNIT	SYMBOL	LITHOLOGY	IGNEOUS ACTIVITY		MINERALIZATION
						PLUTON	VOLCAN	
PHANEROZOIC	QUATERNARY	Recent Alluvium	Qa	Qa	Inconsolidated alluvial sediments			
PALEO-PROTEROZOIC TO ARCHAIC	Xingu Complex	Duvidal Shear Zone	Dsz	Dsz	Quartz syenite, micro biotite and ultramylonite			
		Palmar	Pmp	Pmp	Medium to coarse grained pinkish porphyritic granite; medium grained biotite-bearing granite			
		Pxsch	Pxsch	Pxsch	Talc phlogopite schist, talc chlorite schist and two mica schist			
		Pxgn	Pxgn	Pxgn	Biotite gneiss and granite gneiss			

Stratigraphy in accordance with: Schobbenhaus et al., 1981 and Antonio Joao P. Barros, 1984; modified

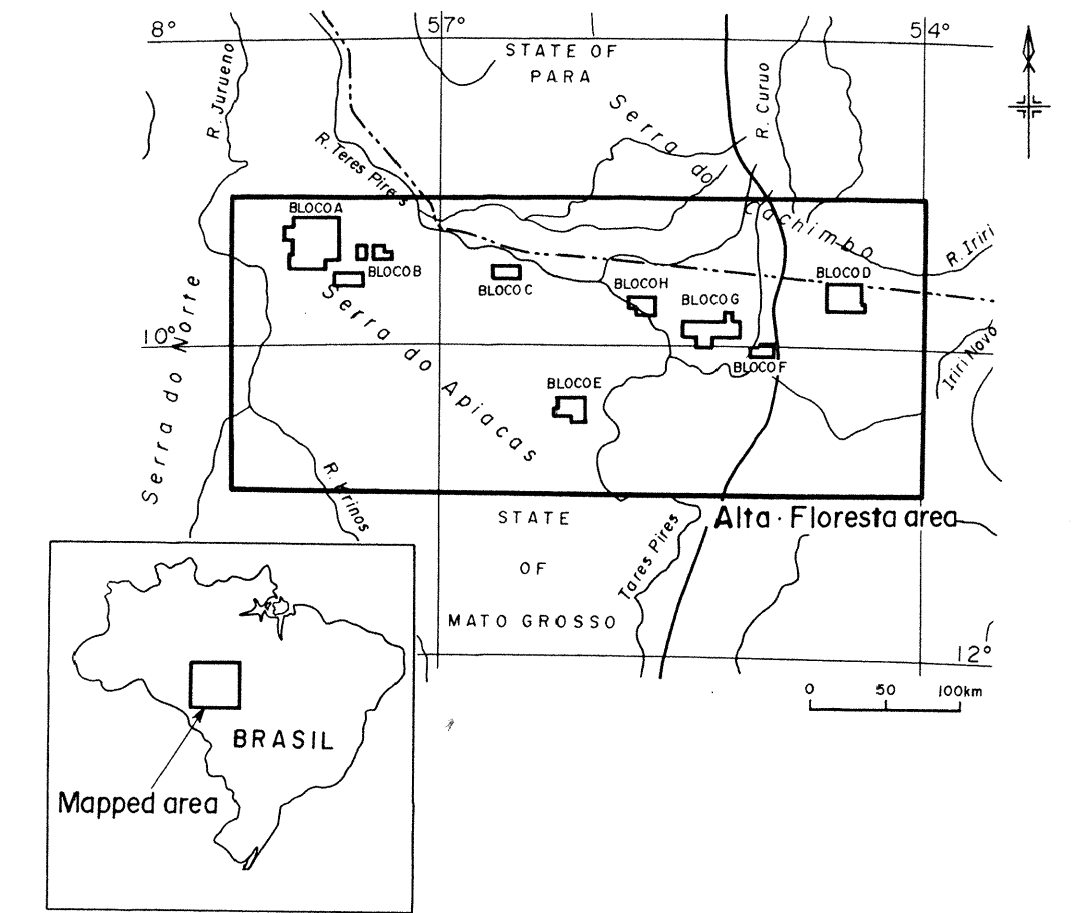
LEGEND

- Quaternary**
 - Qa Alluvial deposits
Gravels, sand, silt and clay
- Xingu Complex**
 - Pxmg Medium to coarse grained, pinkish porphyritic granite
 - Pxsch Saprolite of schist (data from Auger survey)
Talc phlogopite schist, talc chlorite schist and two mica schist
 - Pxgn Saprolite of granite-gneiss (data from Auger survey)
Biotite gneiss and granite gneiss
- Dyke Rock**
 - Rh Rhyolite
 - Di Diabase
- Geological boundary
- Colluvial garimpo area
- Open pits of primary garimpo
- Sample location site and sample number
- MJBA-1 drilling site
- Shaft
- Quartz vein
- Schistosity
- Auger survey lines
- Road
- Geological section

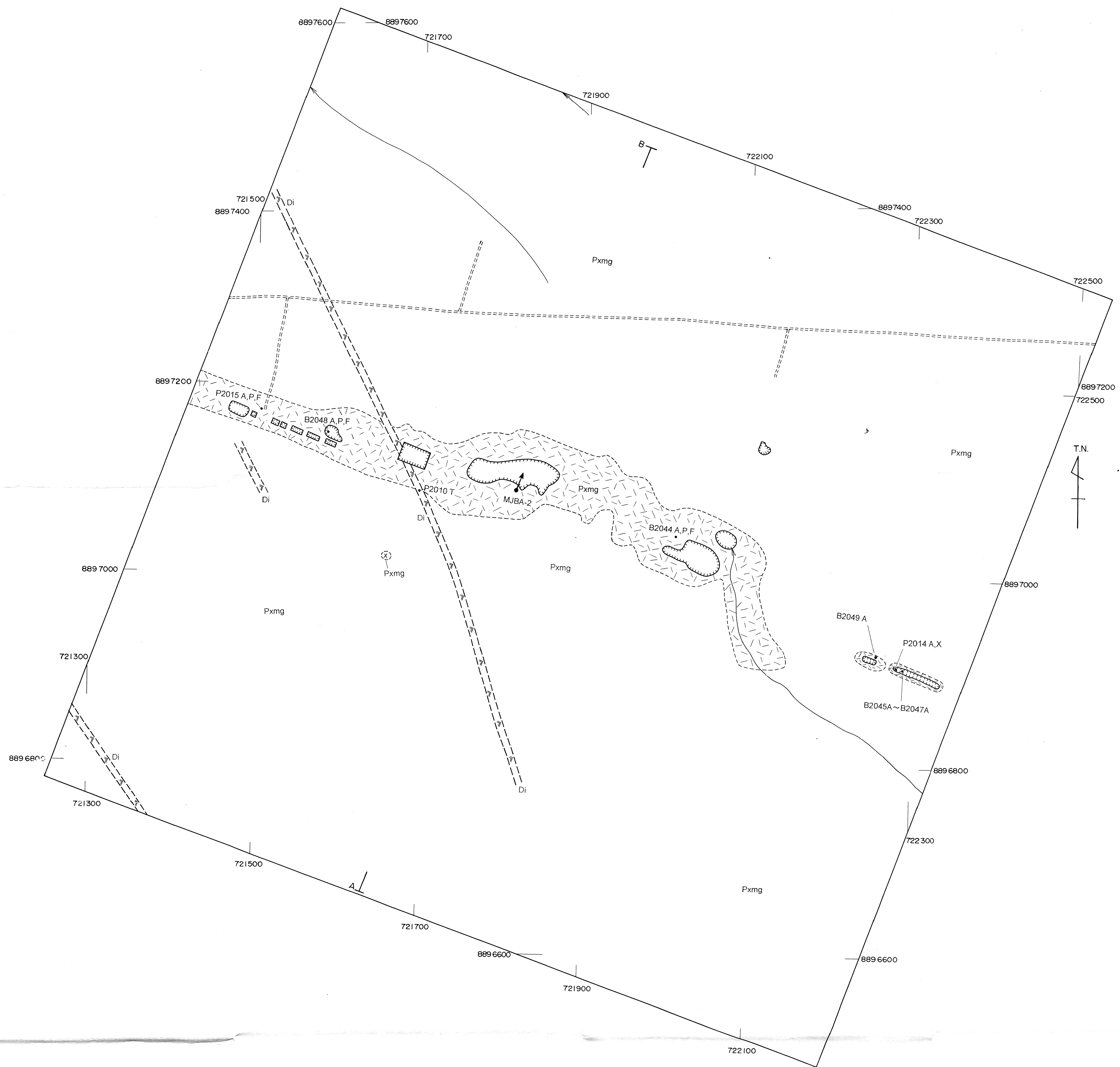


REPORT ON THE MINERAL EXPLORATION
IN
THE ALTA FLORESTA AREA,
FEDERATIVE REPUBLIC OF BRAZIL
PHASE II

Geological map and cross section
of the Garimpo Aluizio in the Block F



JAPAN INTERNATIONAL COOPERATION AGENCY
METAL MINING AGENCY OF JAPAN
FEBRUARY, 2000



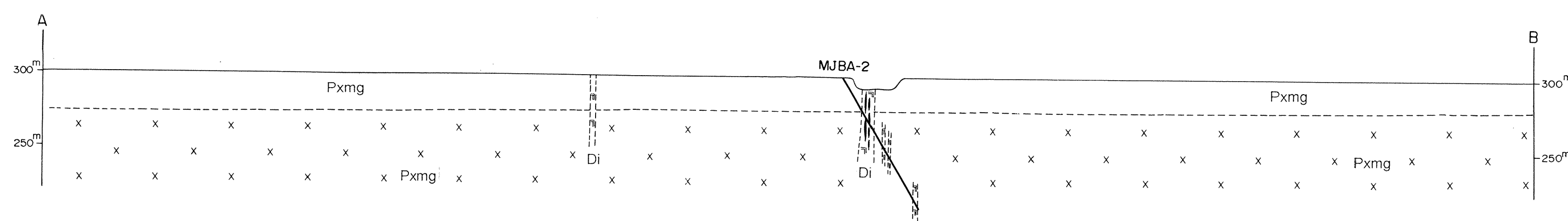
EON	ERA	COLUMNAR SECTION	STRATIGRAPHIC UNIT	SYMBOL	LITHOLOGY	GENEOSIS ACTIVITY		
						TECTONIC	VOLCANIC	MINERALIZATION
PHANEROZOIC	QUATERNARY		Recent Alluvium	Qa	Recent alluvial sediments			
			Quartzite Shearing Zone	Qsz	Quartzite mylonite, micro breccia and ultramylonite			
PALAEO-PROTEROZOIC TO ARCHEAN			Xingu Complex	Pxm	Medium to coarse grained pinkish porphyritic granite; medium grained hornblende biotite granite			
				Di	Talc, phlogopite schist, talc-chlorite schist and two mica schist			
				Pg	Biotite granite and granite gneiss			

Stratigraphy in accordance with: Schobbenhaus et al., 1981 and Antonio Jose P. Barros, 1984, modified

LEGEND

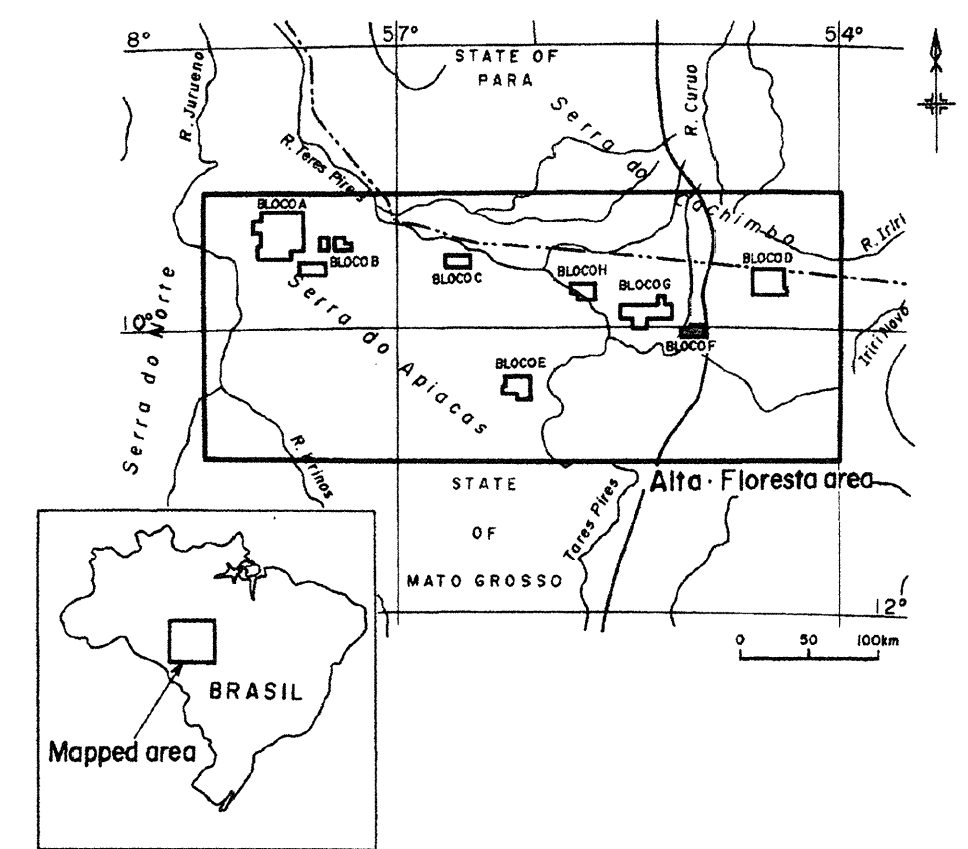
- Xingu Complex**
- Pxm Medium grained hornblende biotite granite (Soil and saprolite)
 - Pxm Medium grained hornblende biotite granite (Outcrop)
- Dyke**
- Di Soil and saprolite of diabase

- Geological boundary
- Garimpo tailing
- Open pits of primary garimpo
- Sample location site
- MJBA-2 drilling site
- Road
- Drainage
- Geological section

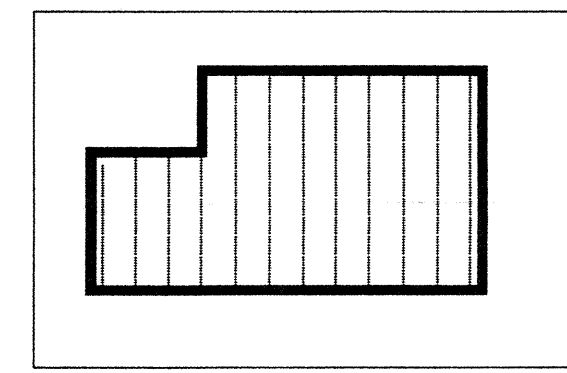
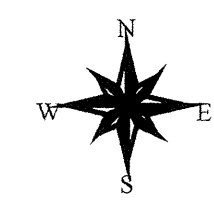
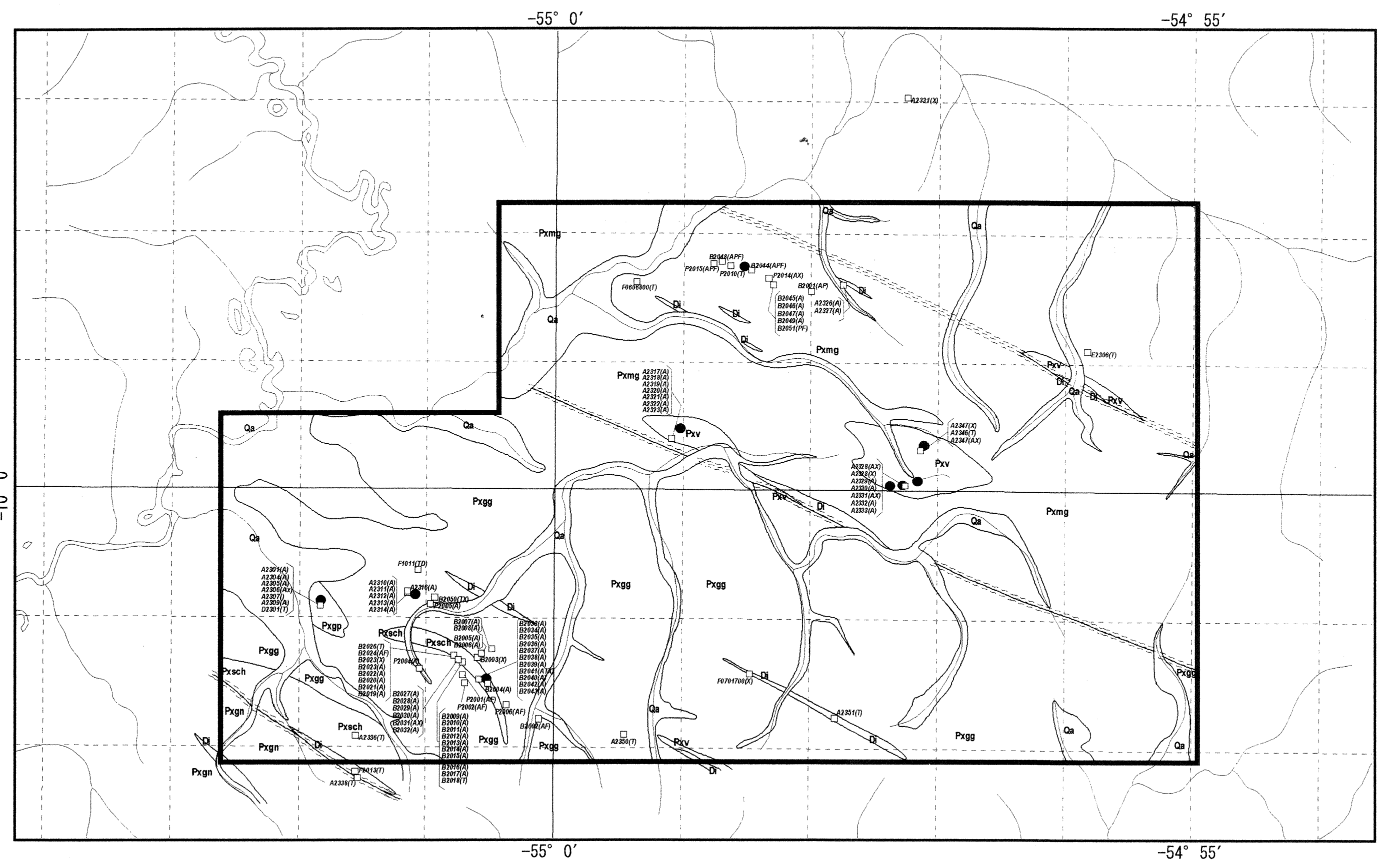


REPORT ON THE MINERAL EXPLORATION
IN
THE ALTA FLORESTA AREA,
FEDERATIVE REPUBLIC OF BRAZIL
PHASE II

Sample location in Block F



JAPAN INTERNATIONAL COOPERATION AGENCY
METAL MINING AGENCY OF JAPAN
FEBRUARY, 2000



Location of Phase II survey area

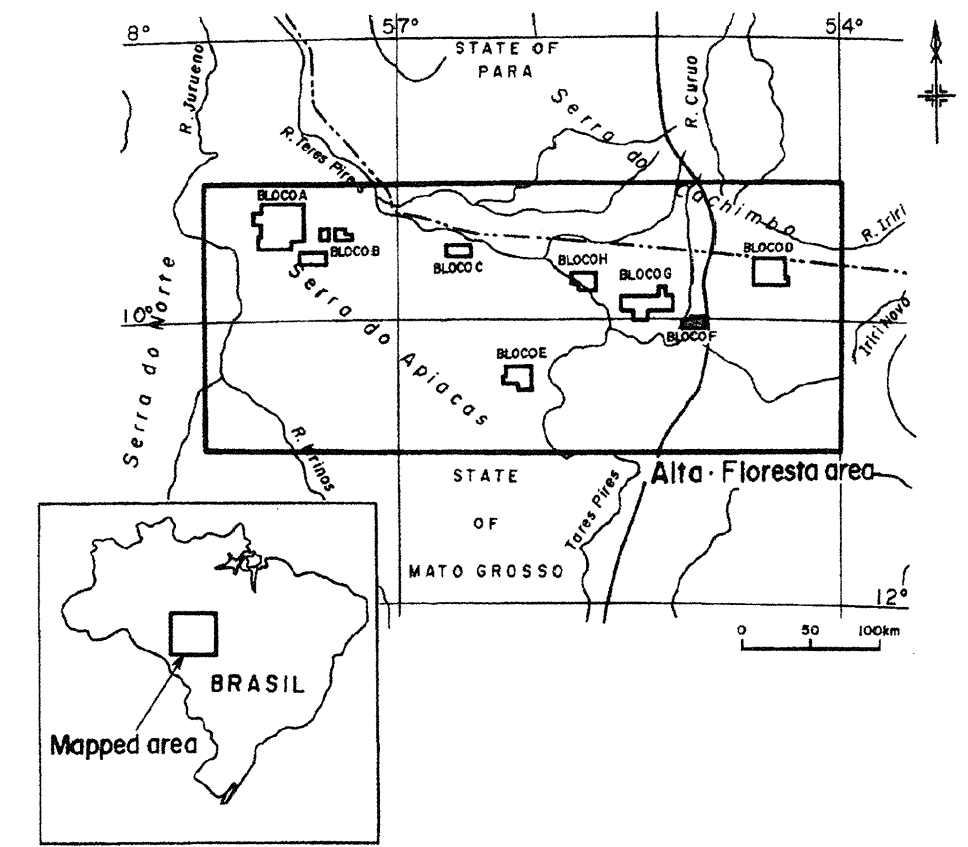


LEGEND

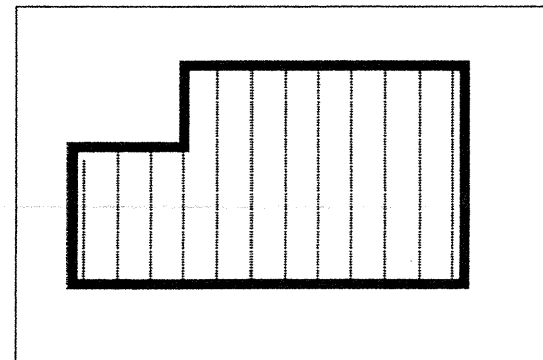
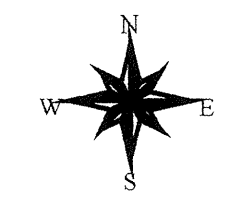
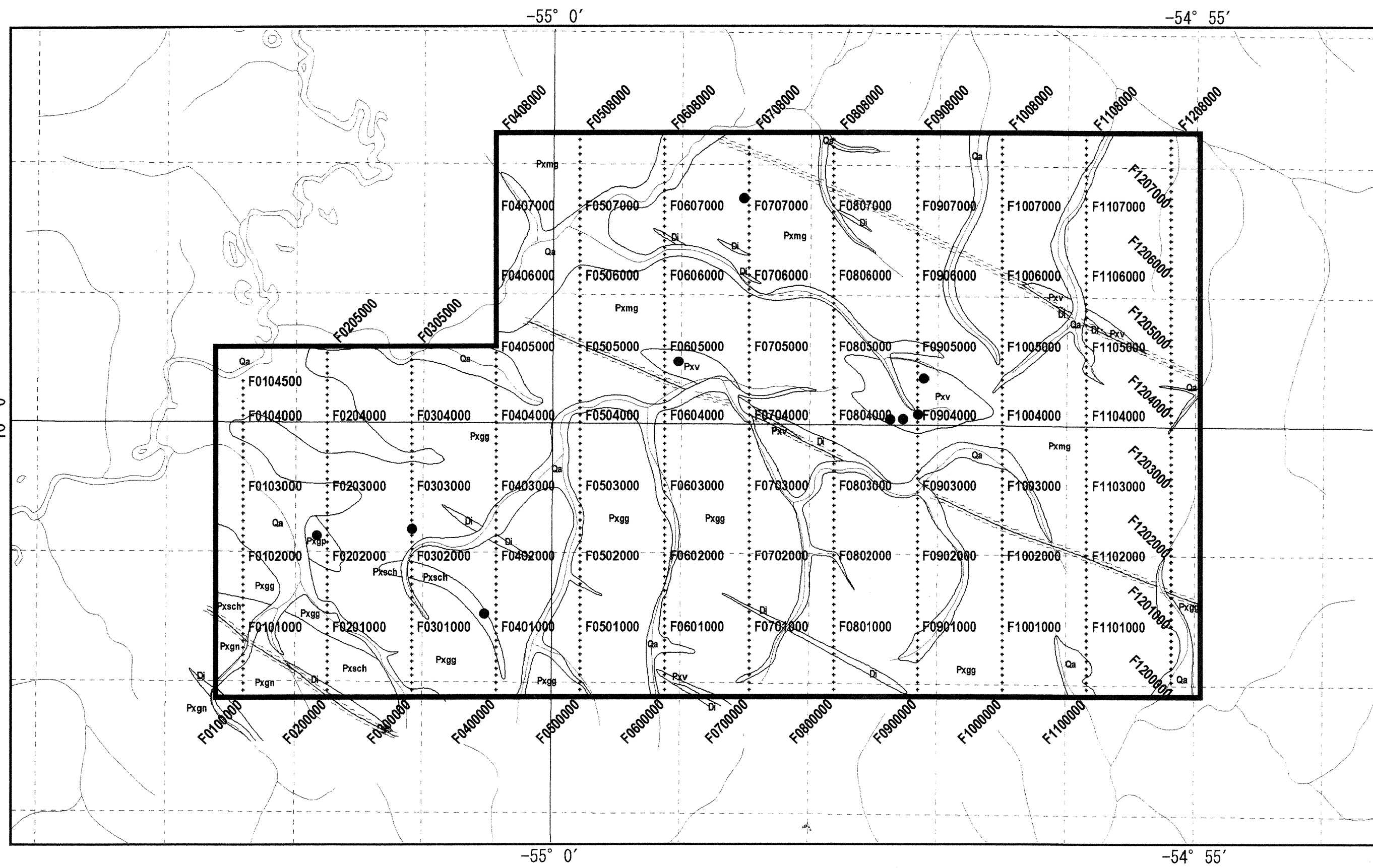
- | | | |
|---|--|--|
| <p>Quaternary</p> <p>Alluvial deposits Qa Gravels, sand, silt and clay.</p> <p>Xingu Complex</p> <p>Volcanic rocks Pxv Volcanic rocks: andesitic tuff</p> <p>Granitic rocks Pxmg Medium to coarse grained, potassic feldspar porphyritic, biotite granite.</p> <p>Pxgg Medium to fine grained, biotite granite with gneissose structure.</p> <p>Pxgp Fine grained, hornblende biotite granite porphyry.</p> <p>Metamorphic rocks</p> <p>Pxsch Talc phlogopite schist, talc chlorite schist and two mica schist.</p> <p>Pxgn Coarse to medium grained, biotite gneiss.</p> | <p>Dyke rock</p> <p>Di Diabase.</p> <p>Structure</p> <p>Mineralization</p> <p>● Primary garimpo.</p> <p>□ Alluvial garimpo.</p> | <p>Sample location</p> <p>A2035 Analyzed sample</p> <p>□ T: Thin section</p> <p>□ P: Polished section</p> <p>□ X: X-ray diffraction analysis</p> <p>□ F: Fluid inclusion</p> <p>□ D: Dating</p> <p>□ A: Ore assay</p> <p>— Claim boundary</p> <p>▭ Phase II survey area</p> <p>— River</p> |
|---|--|--|

REPORT ON THE MINERAL EXPLORATION
IN
THE ALTA FLORESTA AREA,
FEDERATIVE REPUBLIC OF BRAZIL
PHASE II

Location map of soil samples in Block F



JAPAN INTERNATIONAL COOPERATION AGENCY
METAL MINING AGENCY OF JAPAN
FEBRUARY, 2000



Location of Phase II survey area



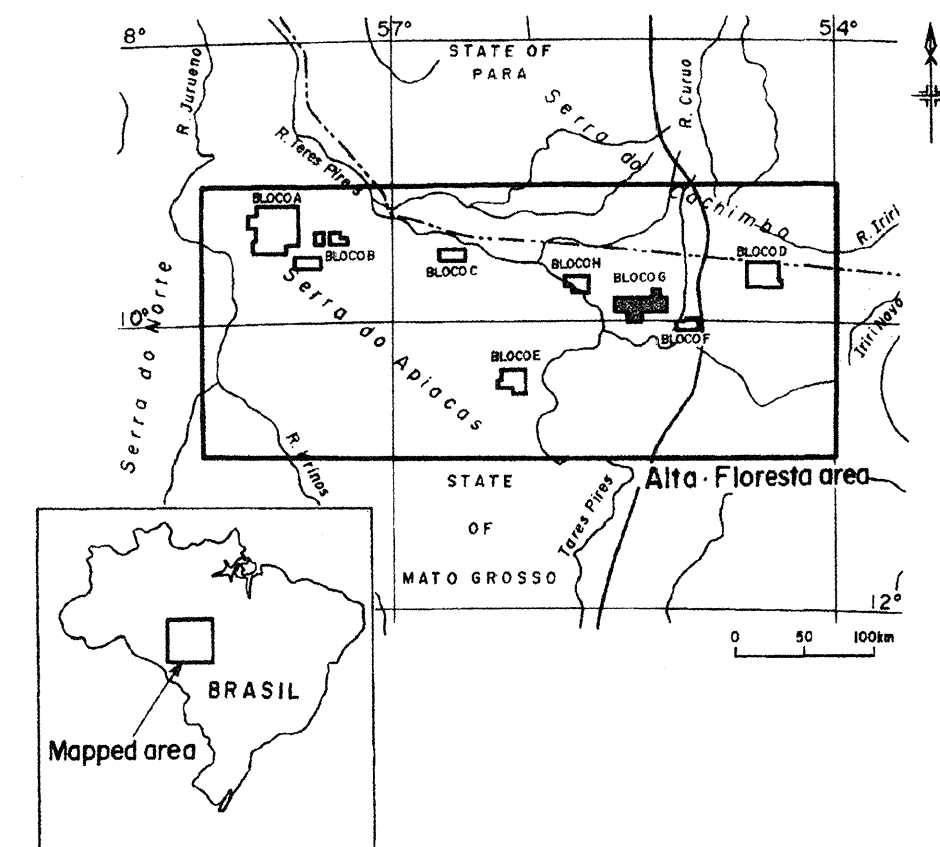
LEGEND

- | | | | | | |
|---------------------------------|---|----------------|----------------------------|---------------------------------|-----------------------------|
| Quaternary
Alluvial deposits | Qa Gravels, sand, silt and clay. | Dyke rock | Di Diabase. | Sampling Point
sheared zone. | F0405000 Sample name |
| Xingu Complex | | Structure | | | Sampling point |
| Volcanic rocks | Pxv Volcanic rocks: andesitic tuff | Mineralization | | | |
| Granitic rocks | Pxmg Medium to coarse grained, potassic feldspar porphyritic, biotite granite. | | ● Primary garimpo. | | |
| | Pxgg Medium to fine grained, biotite granite with gneissose structure. | | □ Alluvial garimpo. | | |
| | Pxgp Fine grained, hornblende biotite granite porphyry. | | | | |
| Metamorphic rocks | Pxsch Talc phlogopite schist, talc chlorite schist and two mica schist. | | | | |
| | Pxgn Coarse to medium grained, biotite gneiss. | | | | |

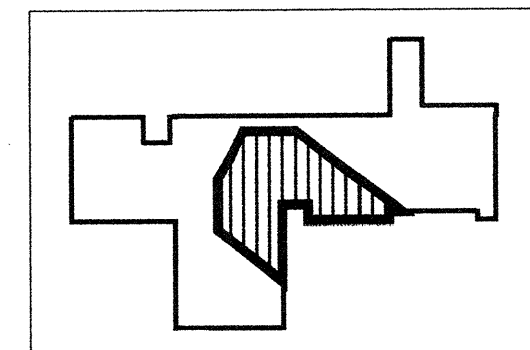
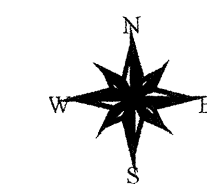
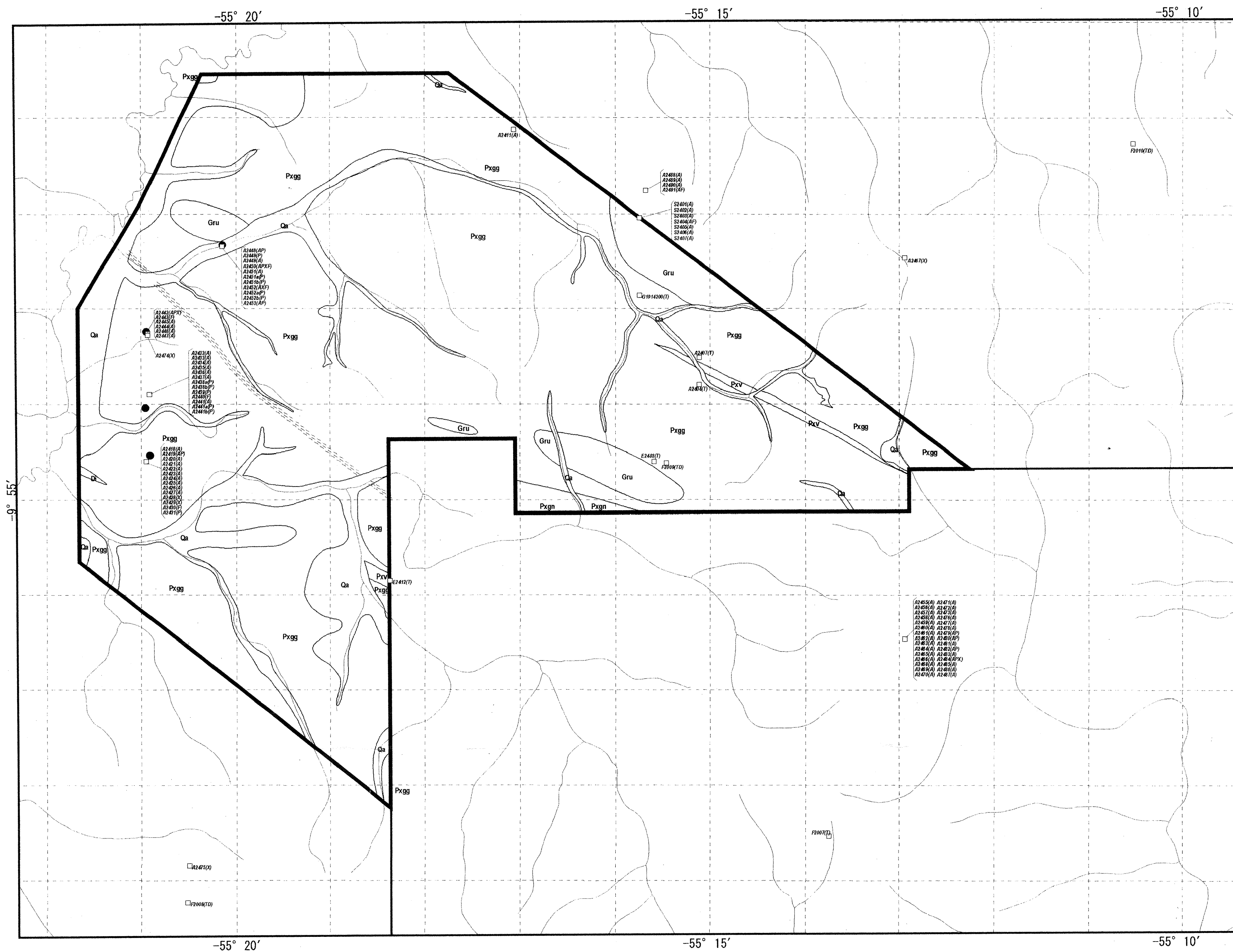
- Claim boundary
- Phase II survey area
- River

REPORT ON THE MINERAL EXPLORATION
IN
THE ALTA FLORESTA AREA,
FEDERATIVE REPUBLIC OF BRAZIL
PHASE II

Sample location in Block G



JAPAN INTERNATIONAL COOPERATION AGENCY
METAL MINING AGENCY OF JAPAN
FEBRUARY, 2000



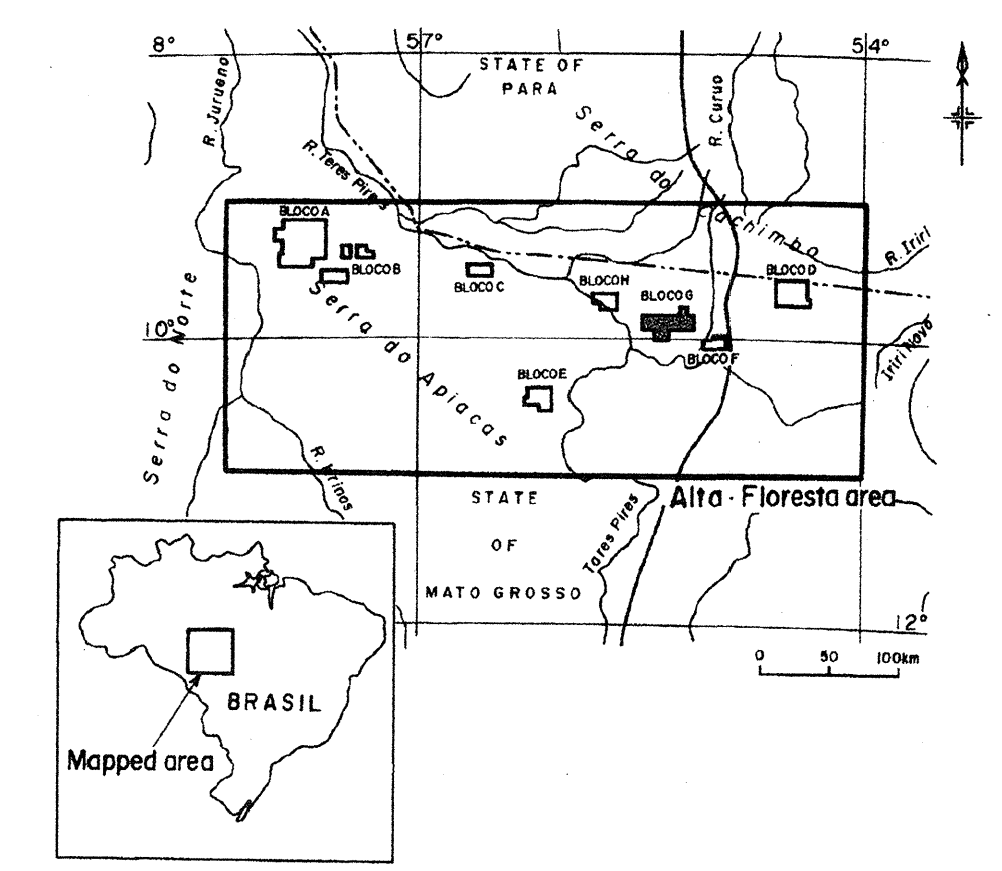
Location of Phase II survey area

LEGEND

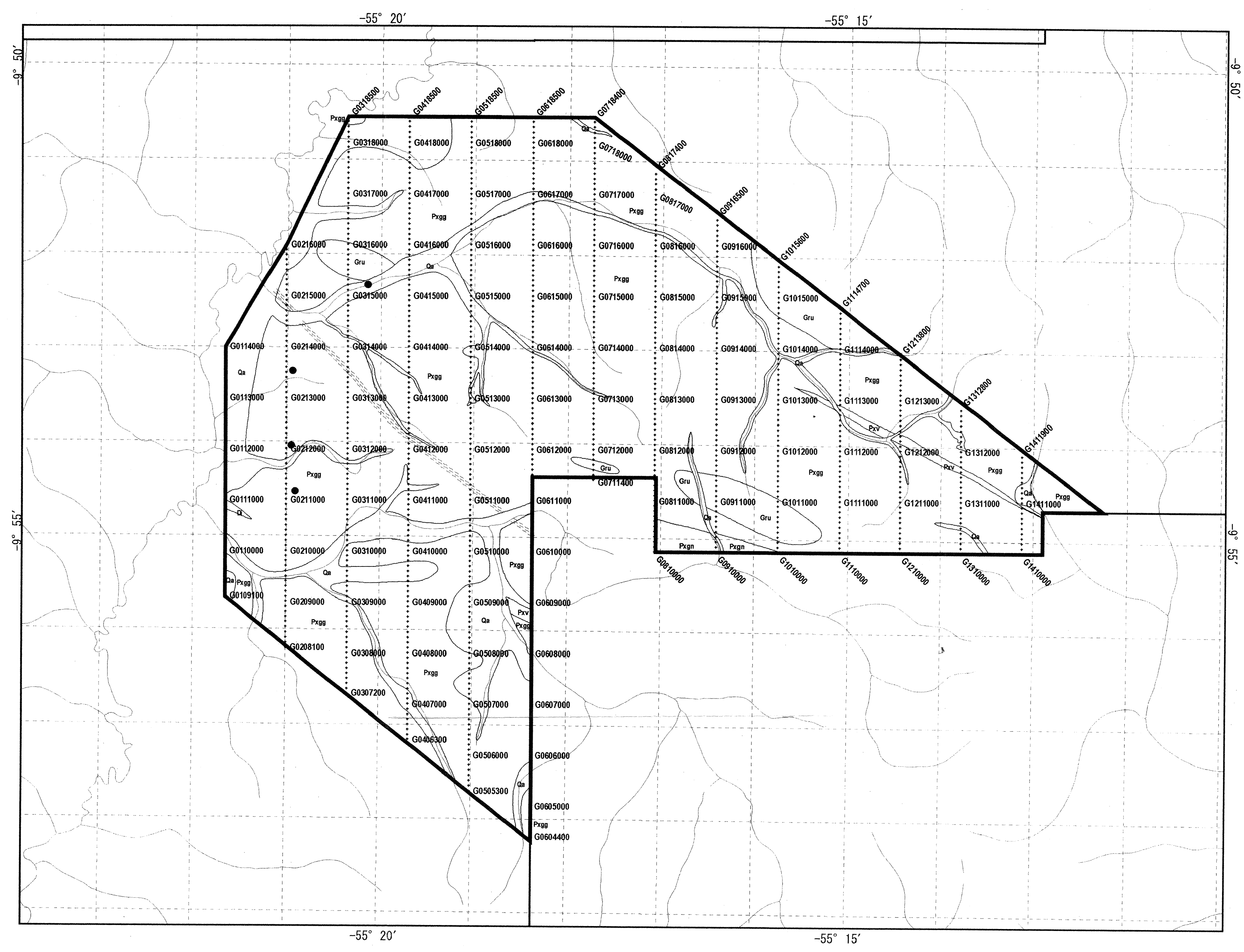
- | | | |
|--|---|--|
| <p>Quaternary
Alluvial deposits</p> <p>Qa Gravels, sand, silt and clay.</p> | <p>Dyke rock</p> <p>Di Diabase.</p> | <p>Sample location</p> <p>A2035 Analyzed sample</p> <p>T: Thin section
P: Polished section
X: X-ray diffraction analysis
F: Fluid inclusion
D: Dating
A: Ore assay</p> |
| <p>Uatuma Group
Teles Pires Granite</p> <p>Gru Pinkish, potassium feldspar porphyritic, biotite granite.</p> | <p>Structure</p> <p>sheared zone.</p> | <p>Claim boundary</p> <p>Phase II survey area</p> |
| <p>Xingu Complex</p> <p>Pxv Acidic volcanic rocks: dacitic tuff and welded tuff.</p> <p>Pxgg Medium to fine grained, biotite granite with gneissose structure.</p> <p>Pxgn Coarse to medium grained, biotite gneiss.</p> | <p>Mineralization</p> <p>Primary garimpo.</p> <p>Alluvial garimpo.</p> | <p>River</p> |

REPORT ON THE MINERAL EXPLORATION
IN
THE ALTA FLORESTA AREA,
FEDERATIVE REPUBLIC OF BRAZIL
PHASE II

Location map of soil samples in Block G

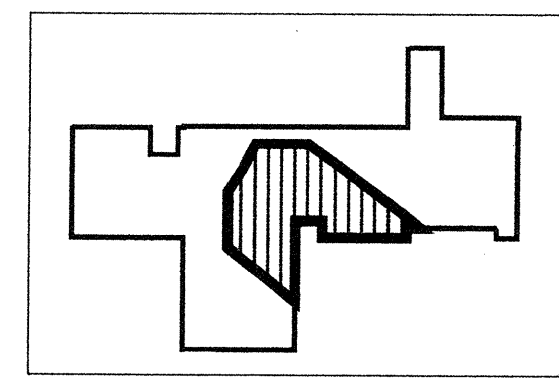


JAPAN INTERNATIONAL COOPERATION AGENCY
METAL MINING AGENCY OF JAPAN
FEBRUARY, 2000



LEGEND

- Quaternary
 - Alluvial deposits: Qa Gravels, sand, silt and clay.
- Uatuma Group
 - Teles Pires Granite: Gru Pinkish, potassium feldspar porphyritic, biotite granite.
- Xingu Complex
 - Pxv Acidic volcanic rocks: dacitic tuff and welded tuff.
 - Pxgg Medium to fine grained, biotite granite with gneissose structure.
 - Pxgn Coarse to medium grained, biotite gneiss.
- Dyke rock
 - Di Diabase.
- Structure
 - sheared zone.
- Mineralization
 - Primary garimpo.
 - Alluvial garimpo.
- Sampling Point
 - G0312000 Sample name
 - Sampling point
- Claim boundary
- Phase II survey area
- River



Location of Phase II survey area