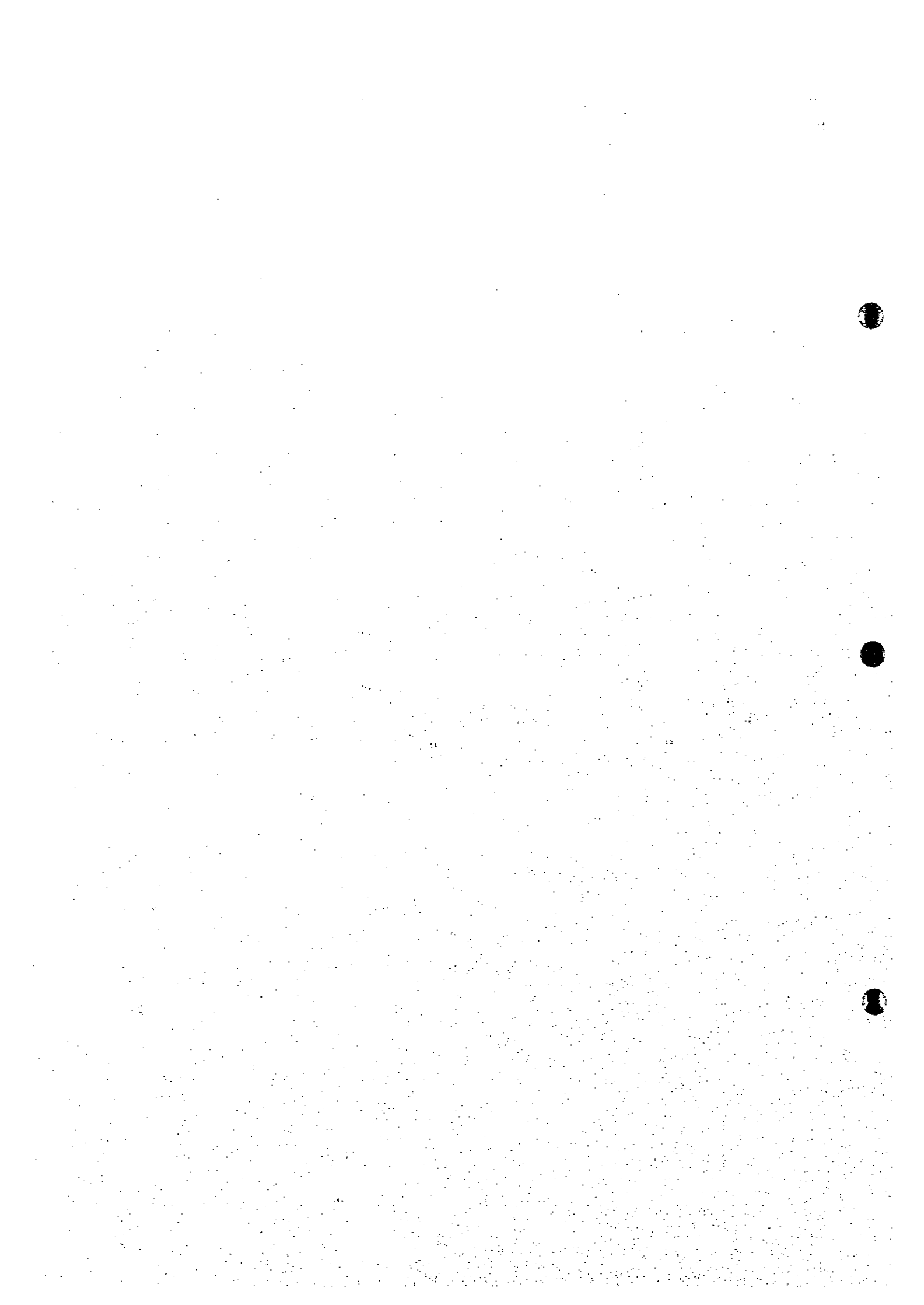


# Figures



**Fig. 1.1 The Organisation of Public Health Administration & Health Service Delivery System**

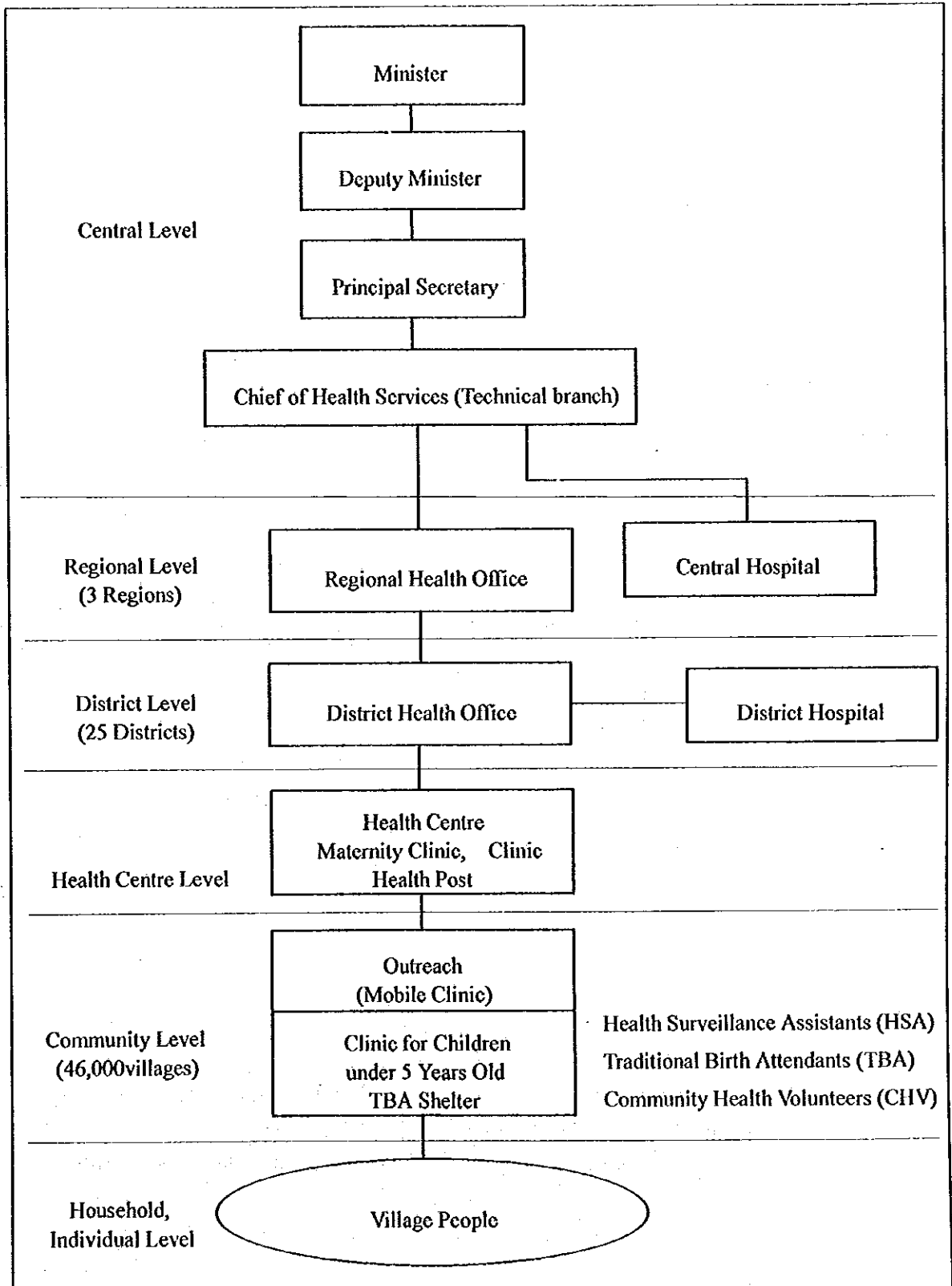


Fig. 1.2 Concept of Health Administration and Health Plan in Malawi

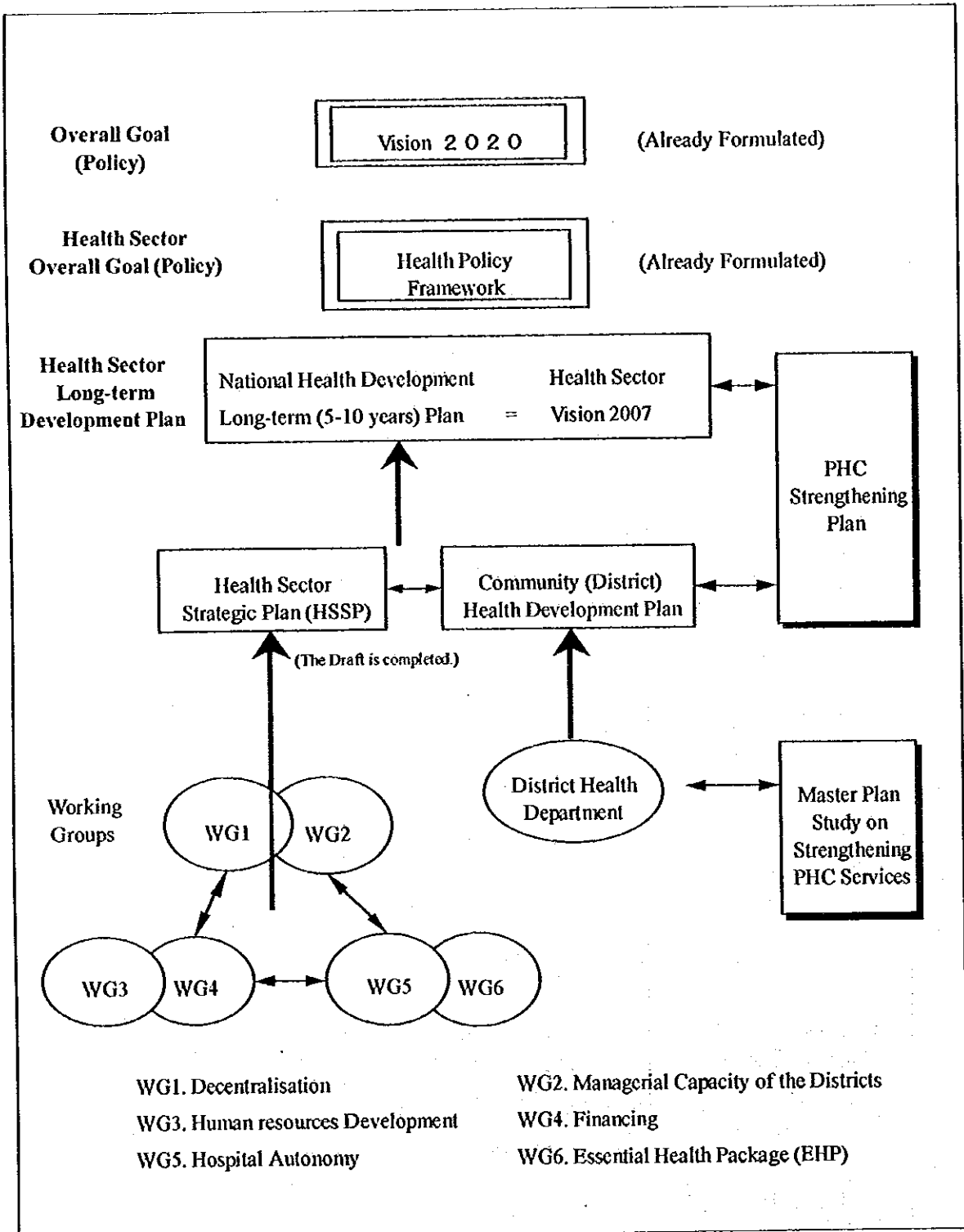


Fig. 1.3 Underweight among GMP Attendants

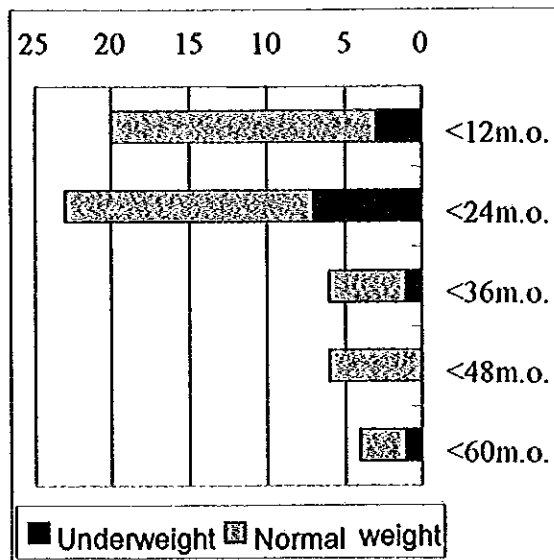


Fig. 1.4 Underweight among GMP Absentees

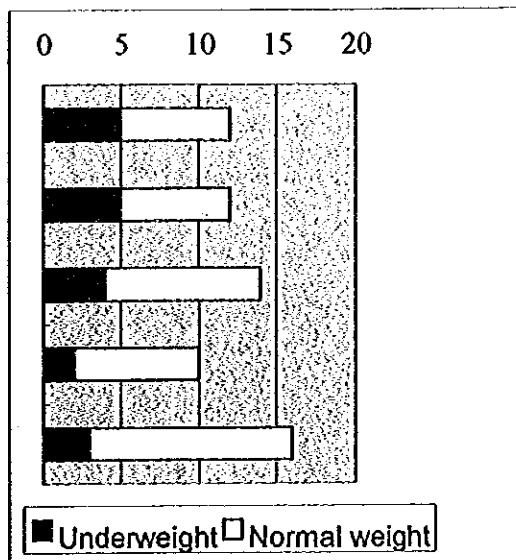


Fig. 1.5 GMP Attendants at the SDH

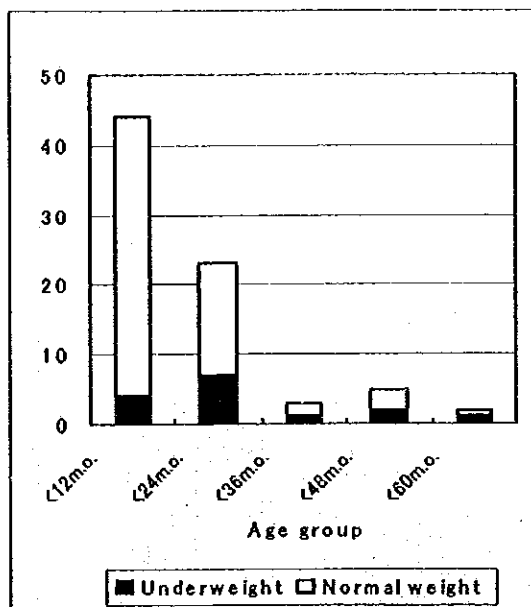


Fig. 1.6 GMP Attendants in Pemba Village

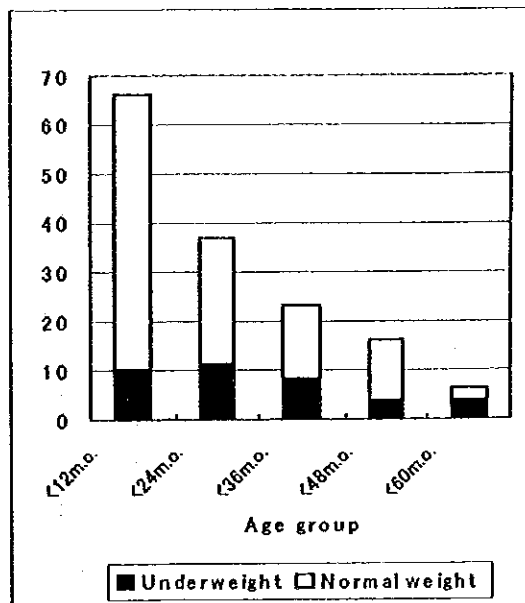


Fig. 1.7 Top Ten Diagnoses at U5 Clinics In the Central Region

(N=2,938,374; in 1994)

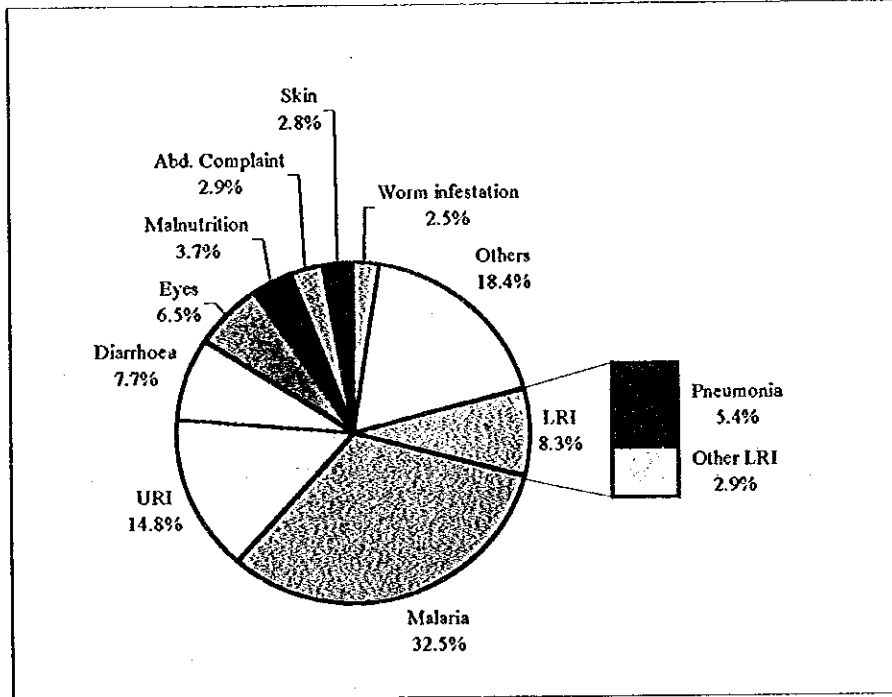


Fig. 1.8 Top Ten Diagnoses at General OPDs in the Central Region

(N=4,538,835; in 1994)

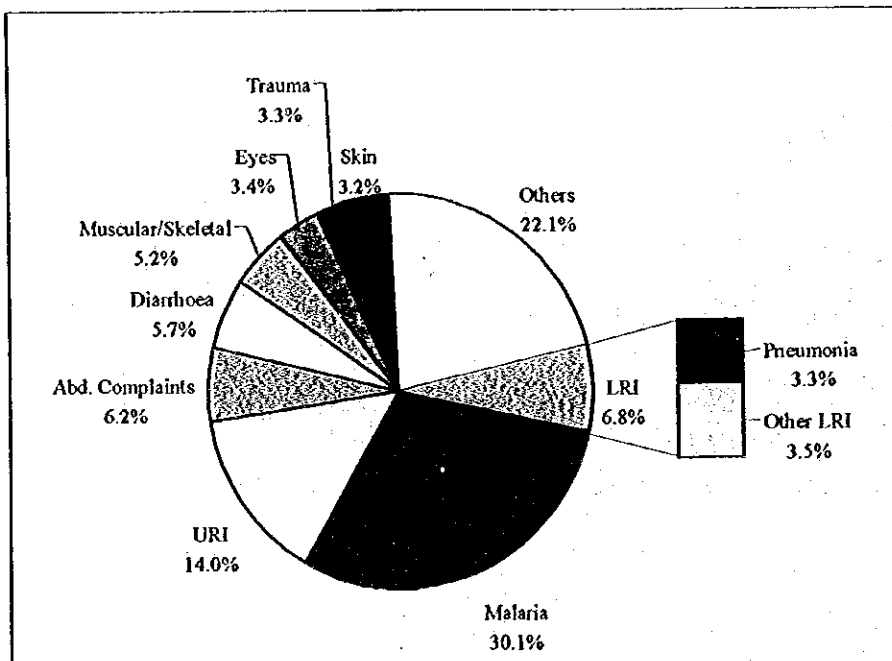


Fig. 1.9 Top Ten Diagnoses at U5 Clinics In Salima/Dedza East

(N=189,657; in 1997)

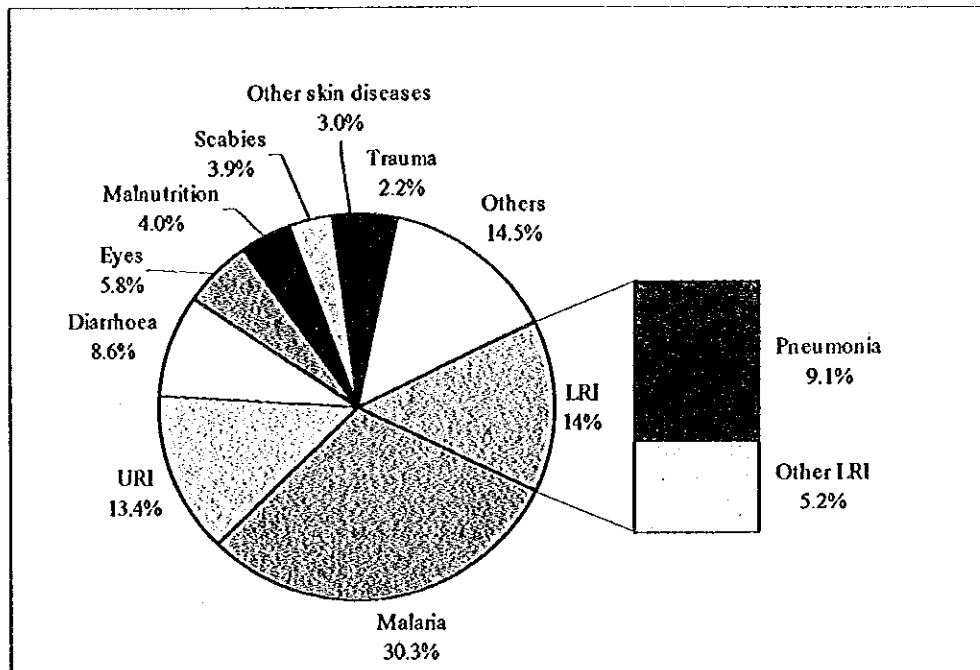


Fig. 1.10 Top Ten Diagnoses at General OPDs In Salima/Dedza East

(N=252,988; in 1997)

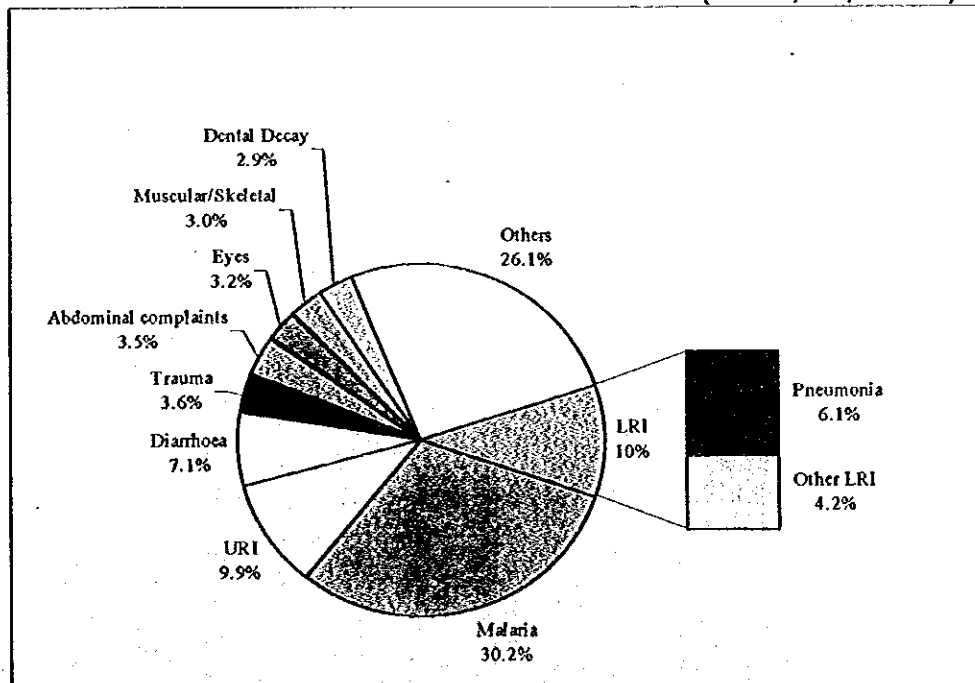


Fig. 1.11 Top Five Diseases for Admission at the Paediatric Ward of SDH

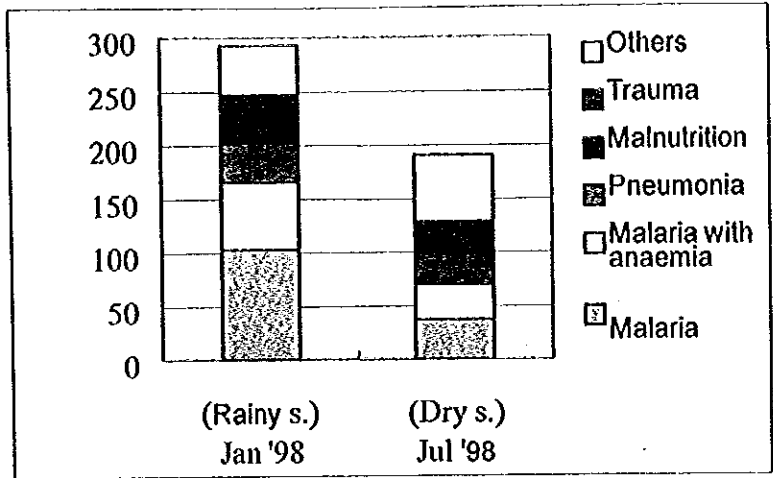


Fig. 1.12 Top Five Diseases for Admission to the Adult Wards of SDH

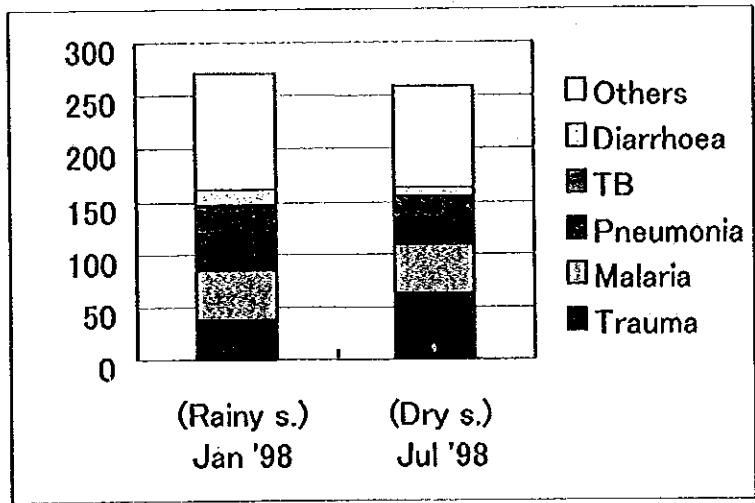


Fig. 1.13 Monthly Malaria Diagnosis at Chipoka HC (1997)

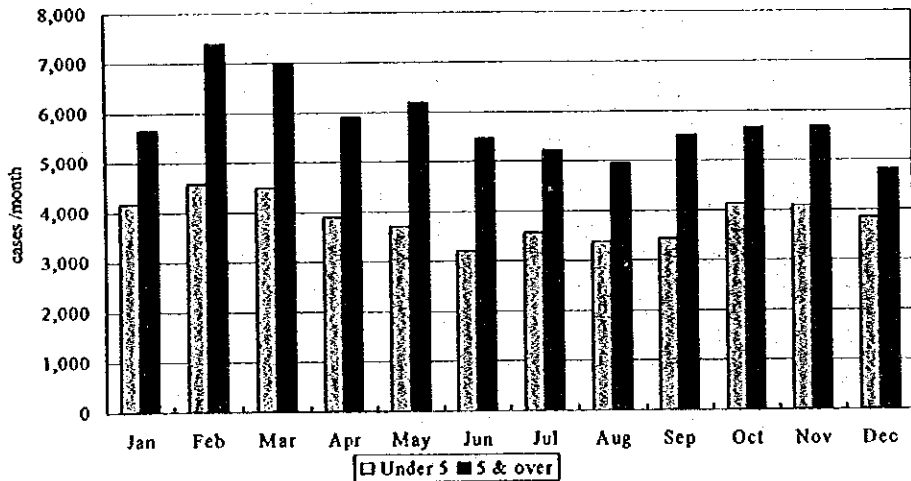




Fig. 1.14 Safe & Unsafe Water in Sallma District

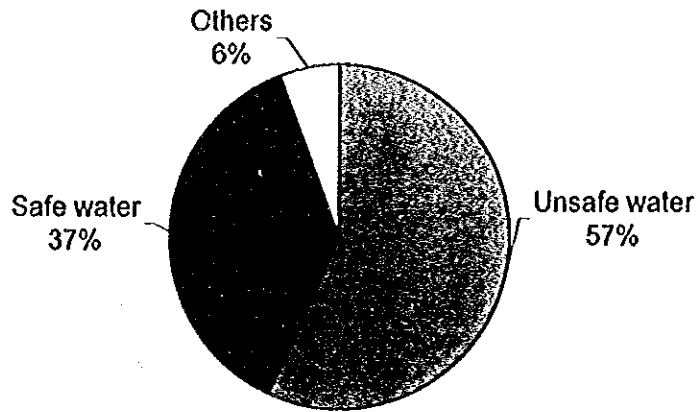


Fig. 1.15 Water Source in Sallma District

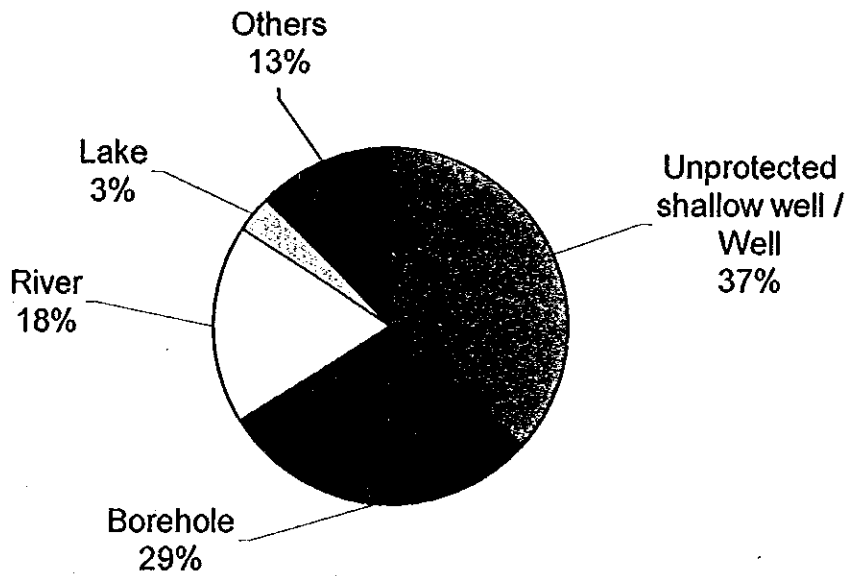


Fig. 1.16 TA Wise Safe Water In Salima District

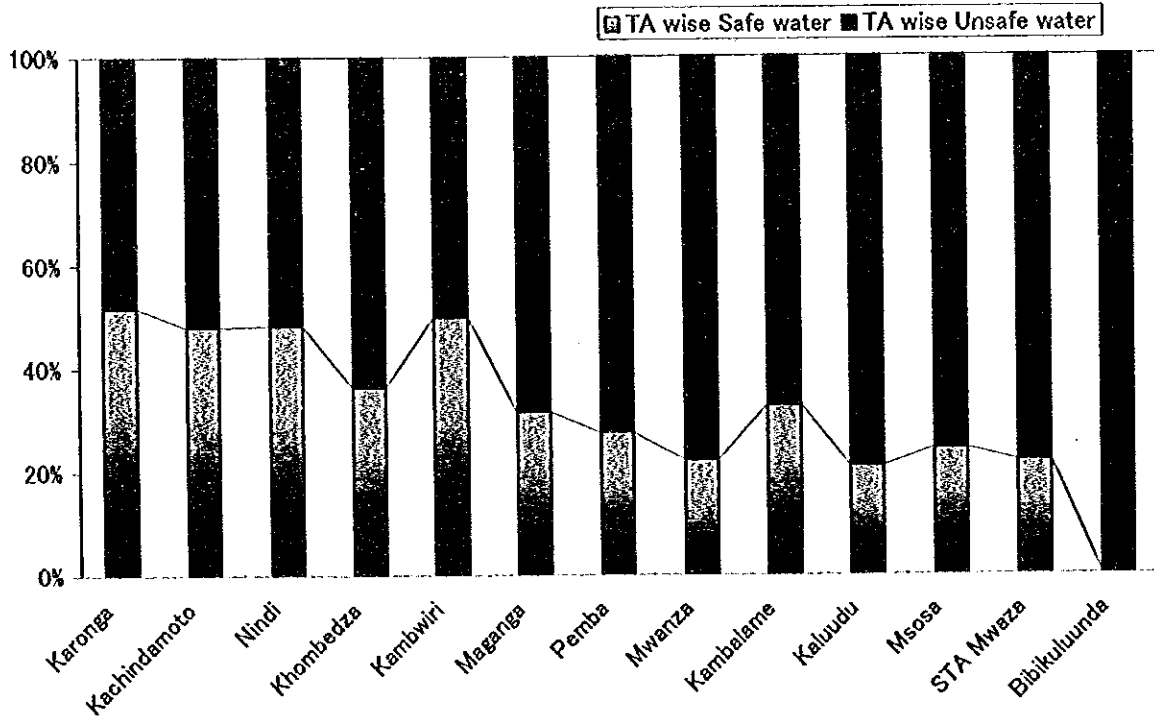


Fig. 1.17 Access to Health Facility

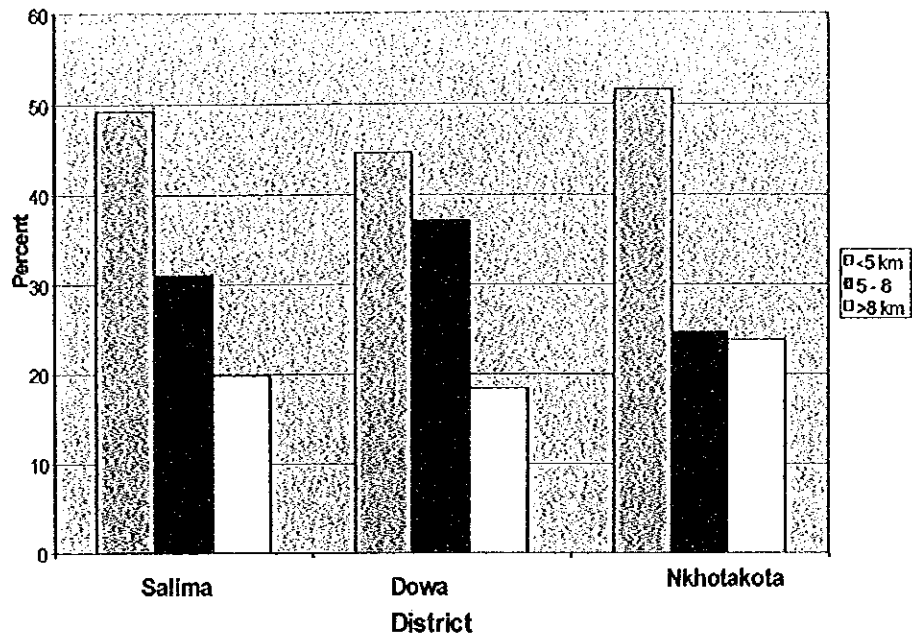


Fig. 1.18 Comparison of Access: General Population and CBA in Salima

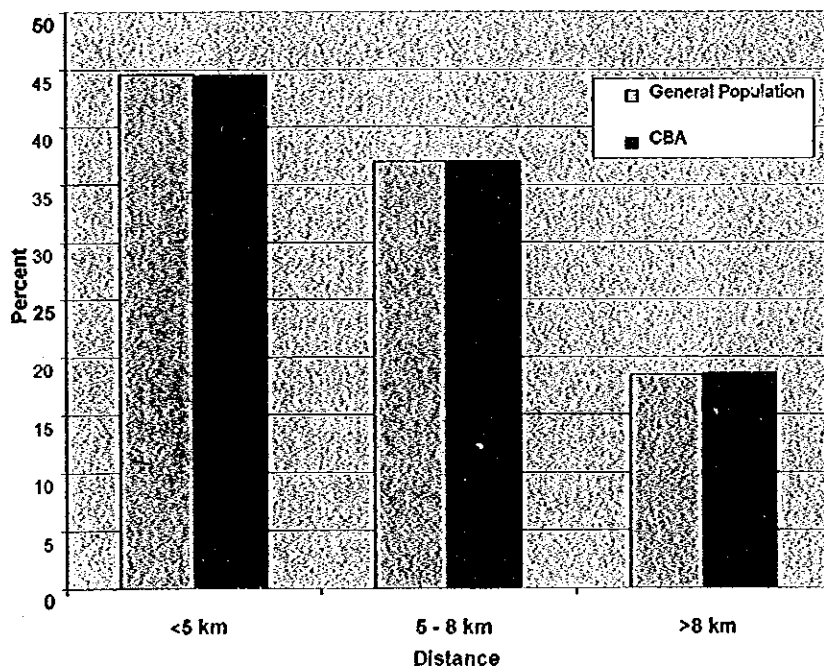


Fig. 1.19 Comparison of Access: General Population and CBA, DOWA

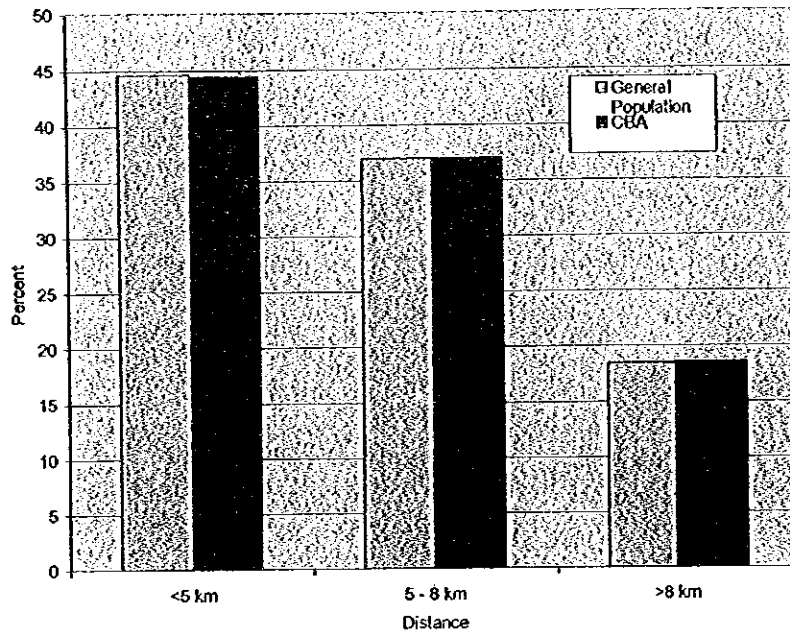


Fig. 1.20 Access to Emergency Obstetrics Care in Sallma

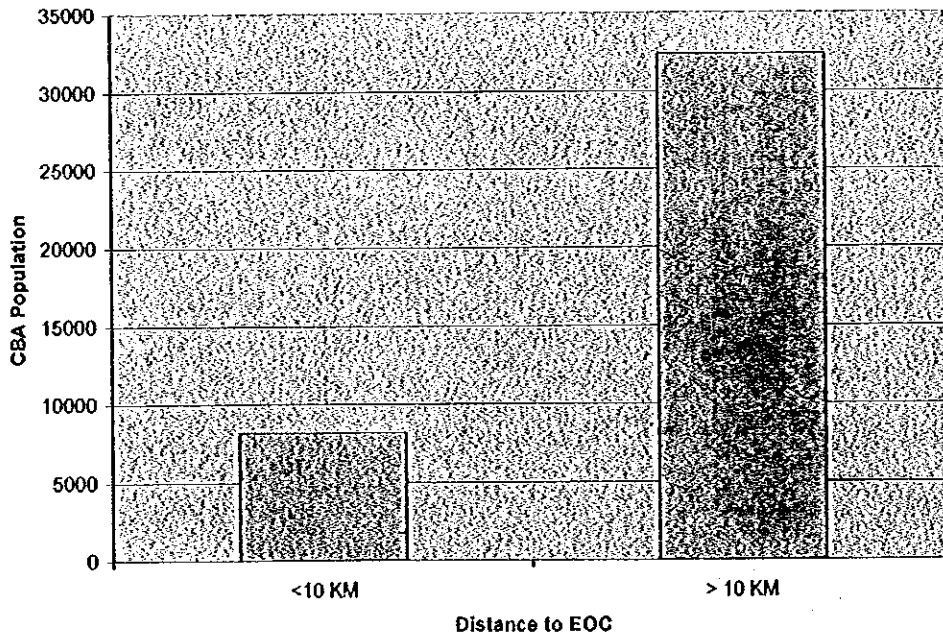


Fig. 1.21 Facility Wise Catchment Population, Salima

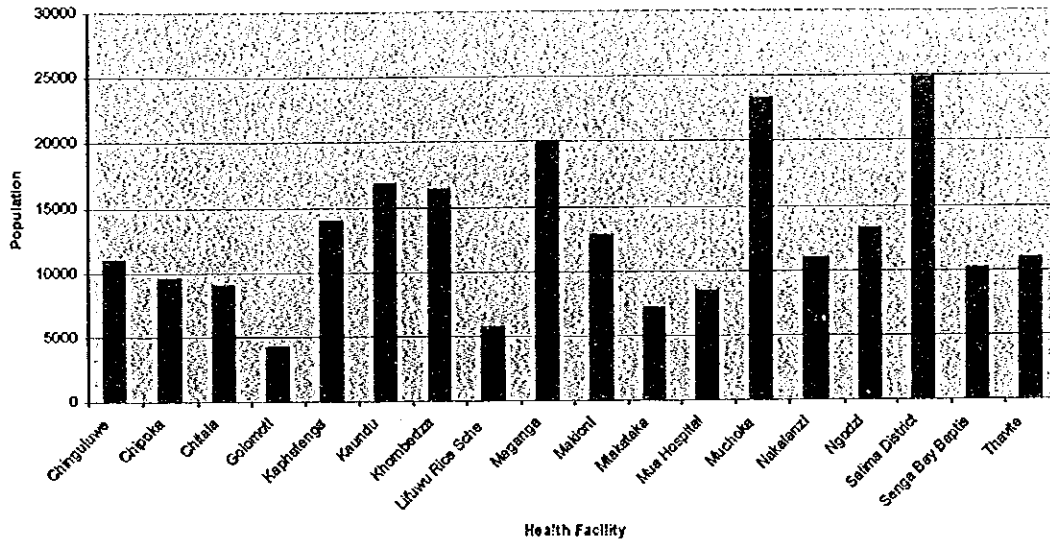


Fig. 1.22 Facility Wise Catchment Population, Dowa

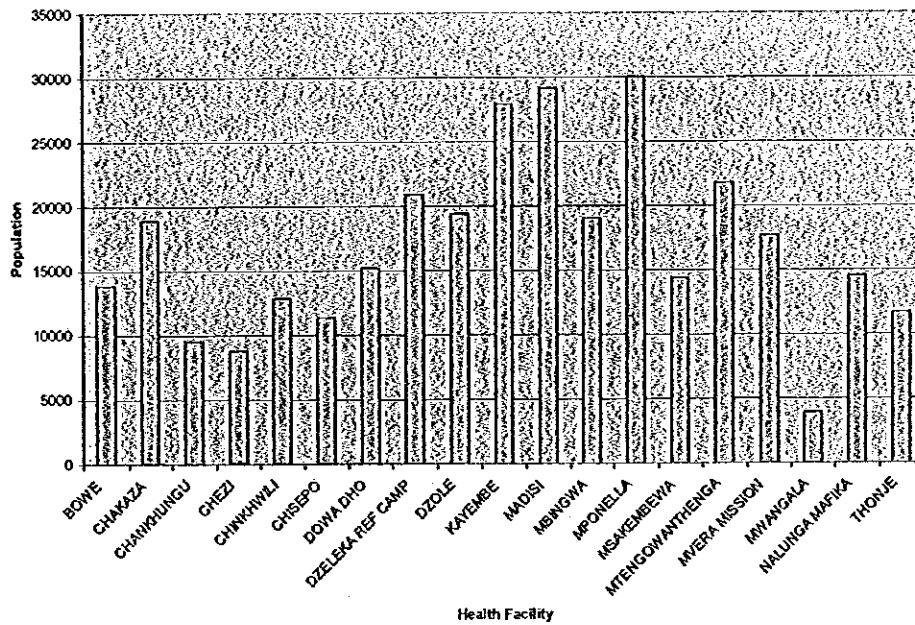


Fig. 1.23 Facility Wise Catchment Population, Nkhotakota

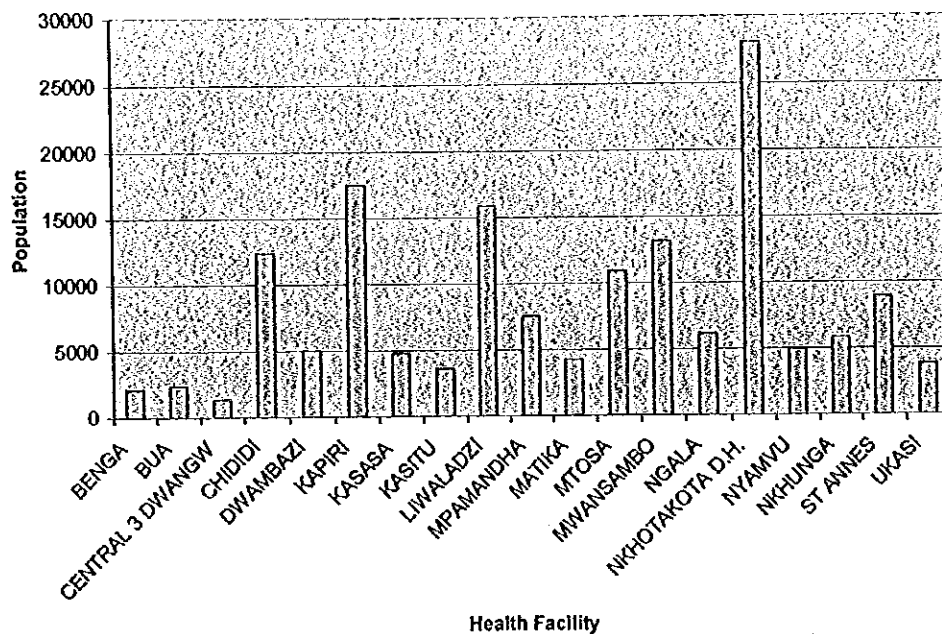


Fig. 1.24 Comparison of Actual Utilisation and Expected Utilisation, Salima

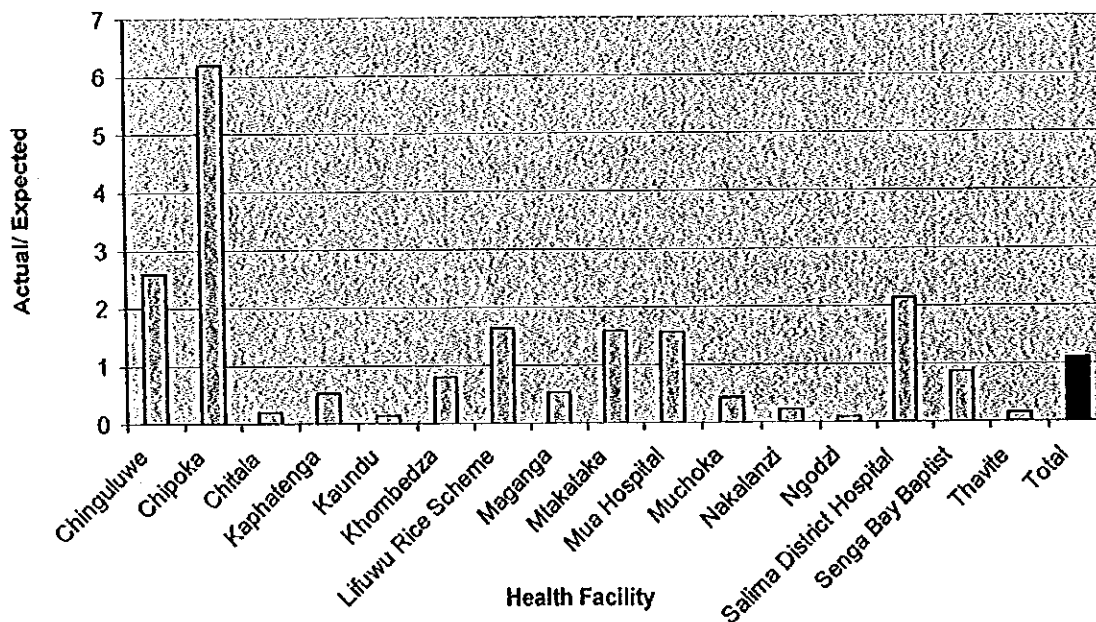


Fig. 1.25 Comparison between Network Analysis and Euclidean Measurement, Sallima, 5 km Level

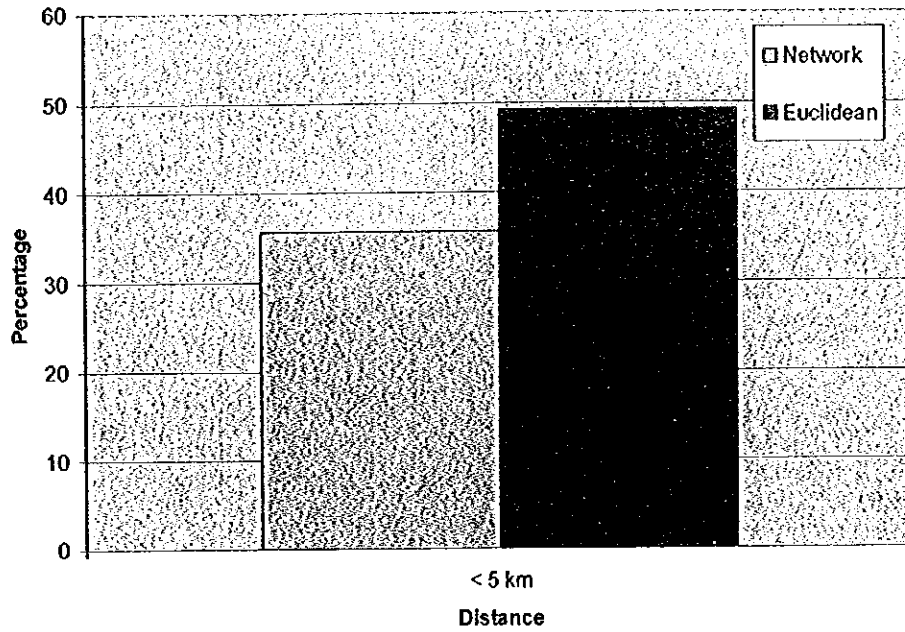


Fig. 1.26 Distance to Health Services

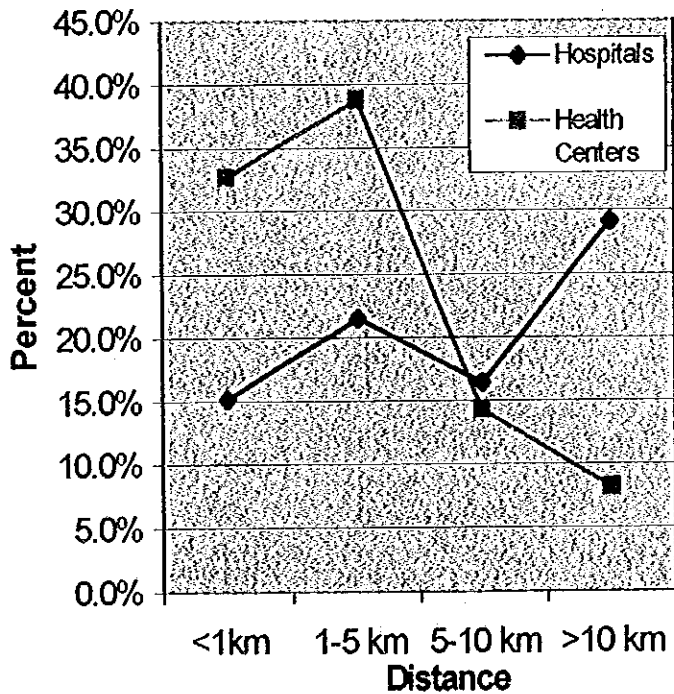
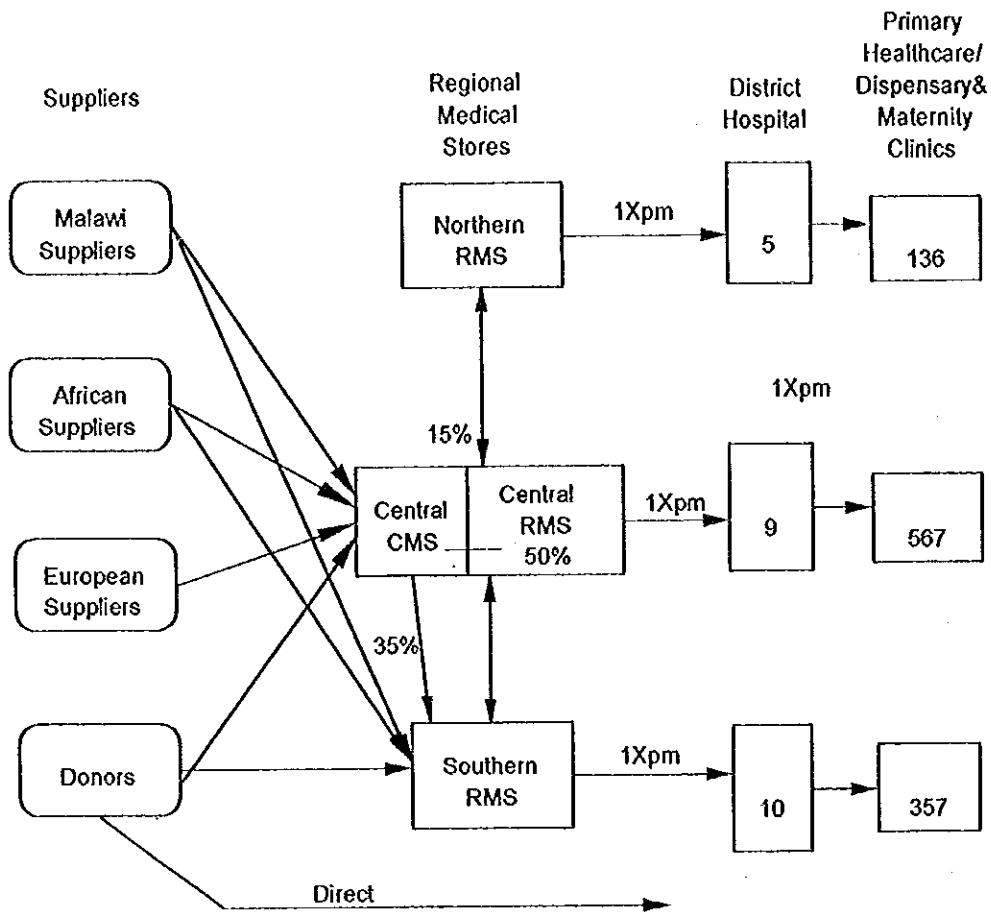


Fig. 1.27 Flow of Drugs and Medical Supplies



Source: Deloitte & Touche, "Transformation Plan for the Malawi Central Medical Stores", June 1996

Fig. 1.29 Social Structures in Malawi

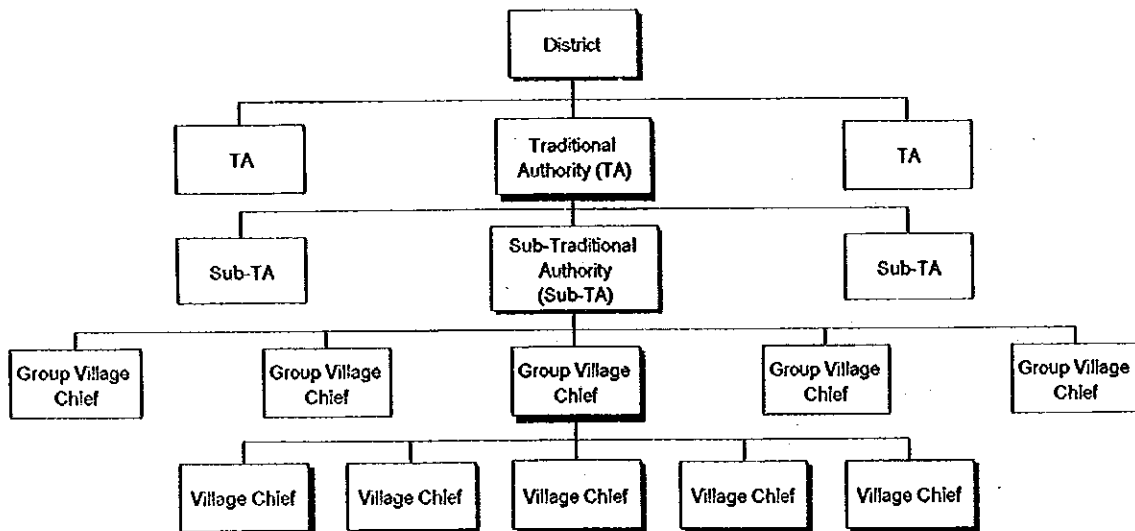




Fig. 1.28 Comparison of Catchment Population

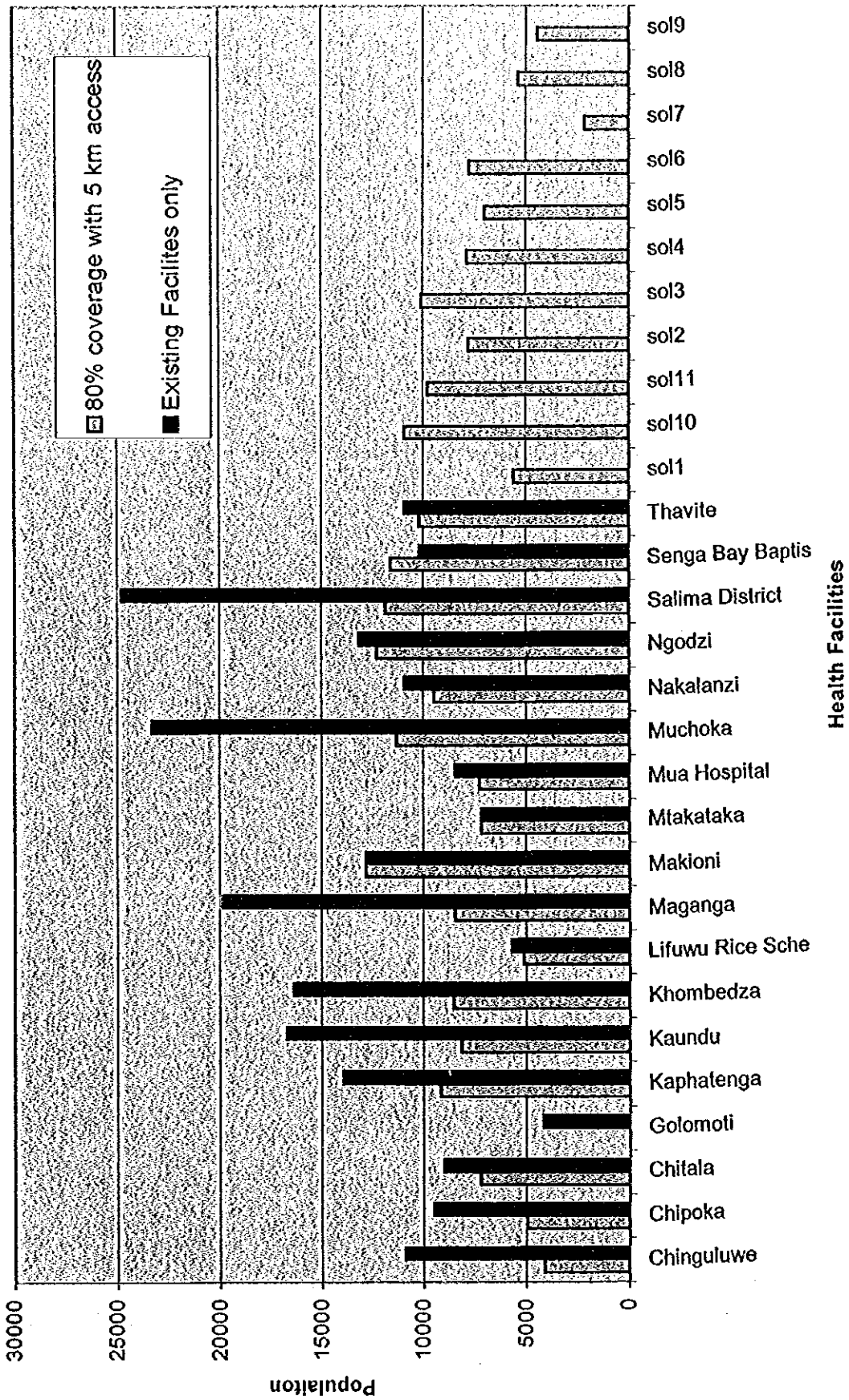
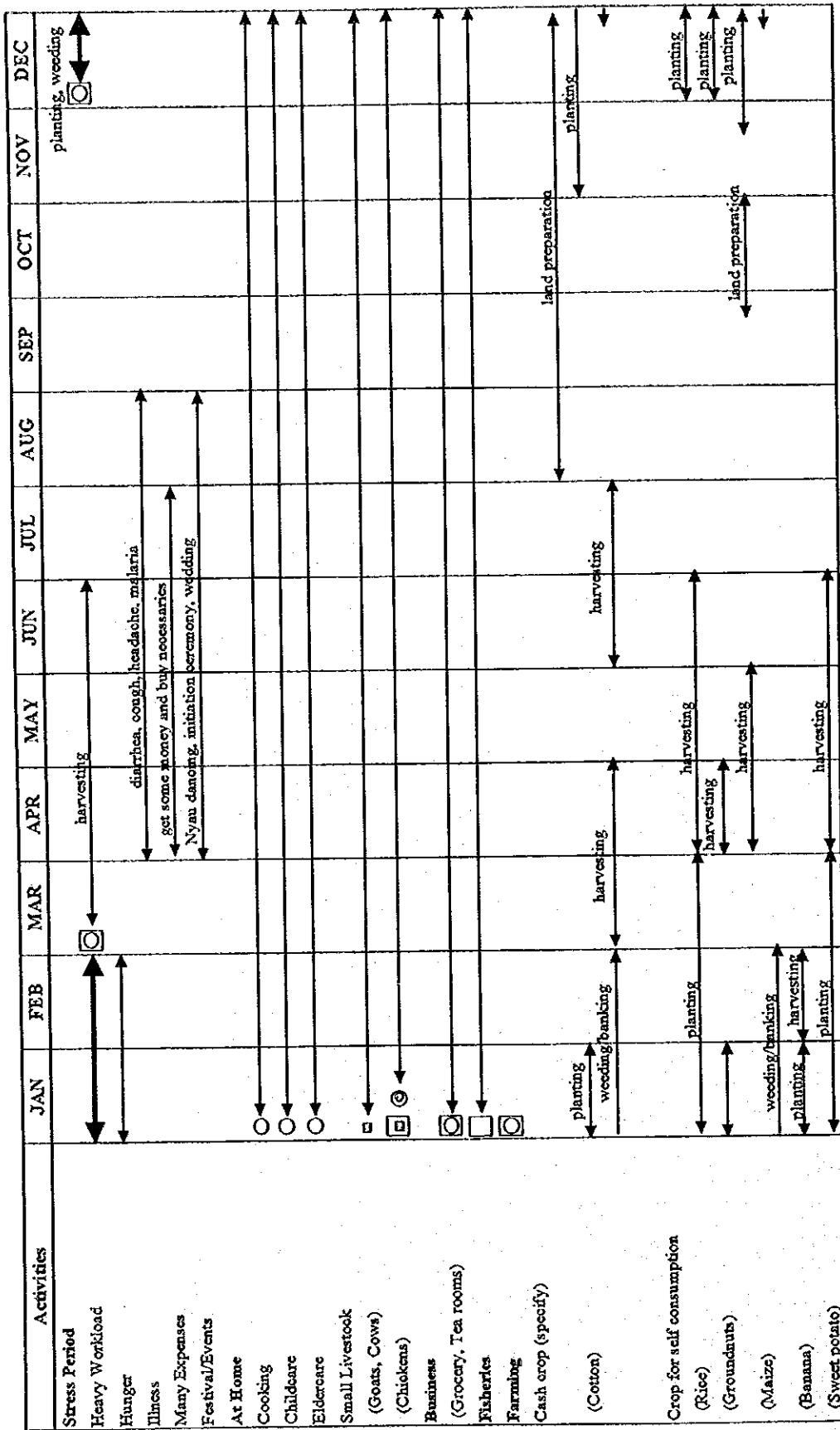


Fig. 1.30 Seasonal Calendar



Source : Key Informant interview in Saluma District

- Adult Male
- Adult Female
- Male Child
- Female Child
- Continuous Activity
- Sporadic Activity
- More intensive Activity

Fig. 2.1 Frequency of Meals, In the North

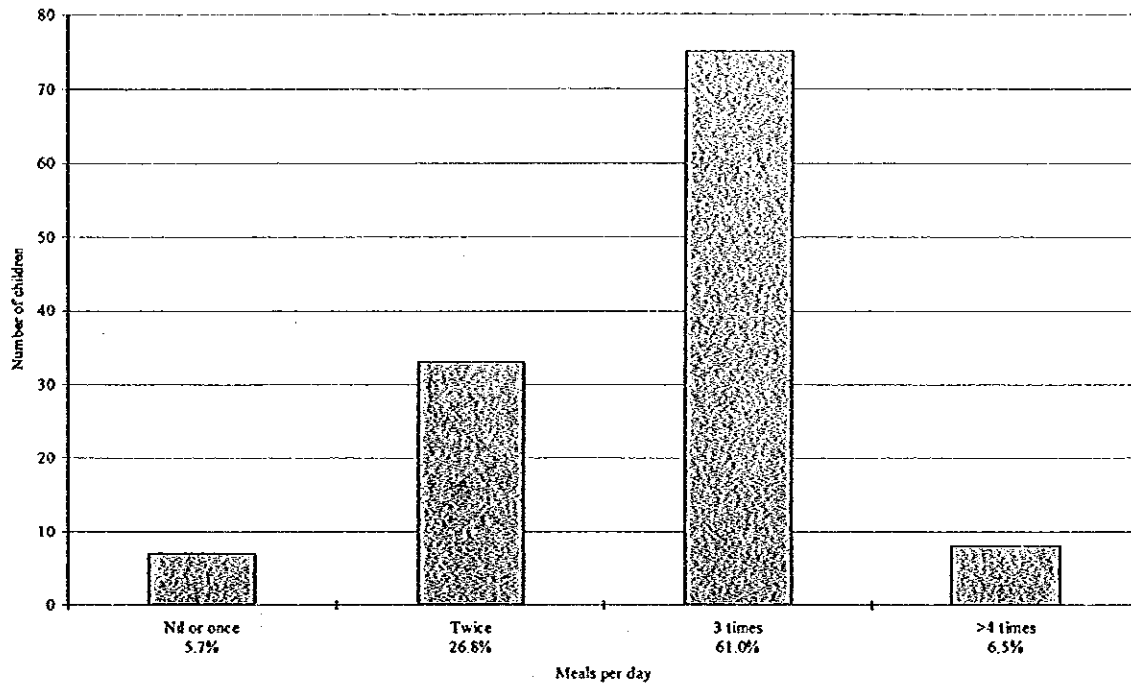


Fig. 2.2 Food Frequency (Eggs), In the North

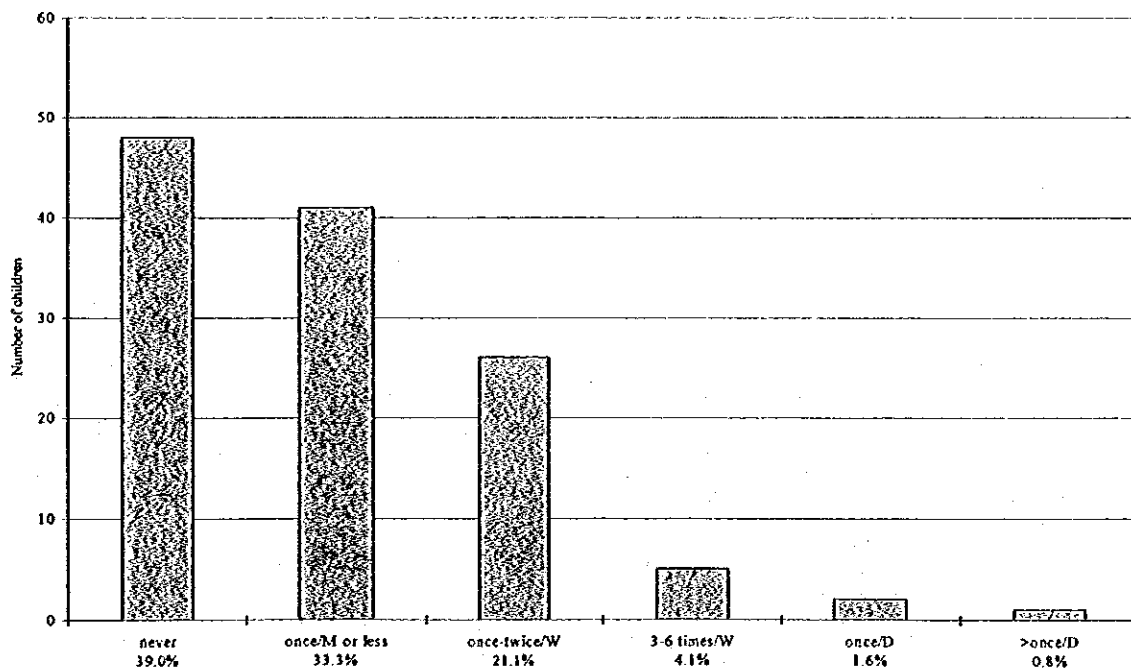


Fig. 2.3 Frequency of Meals, In the South

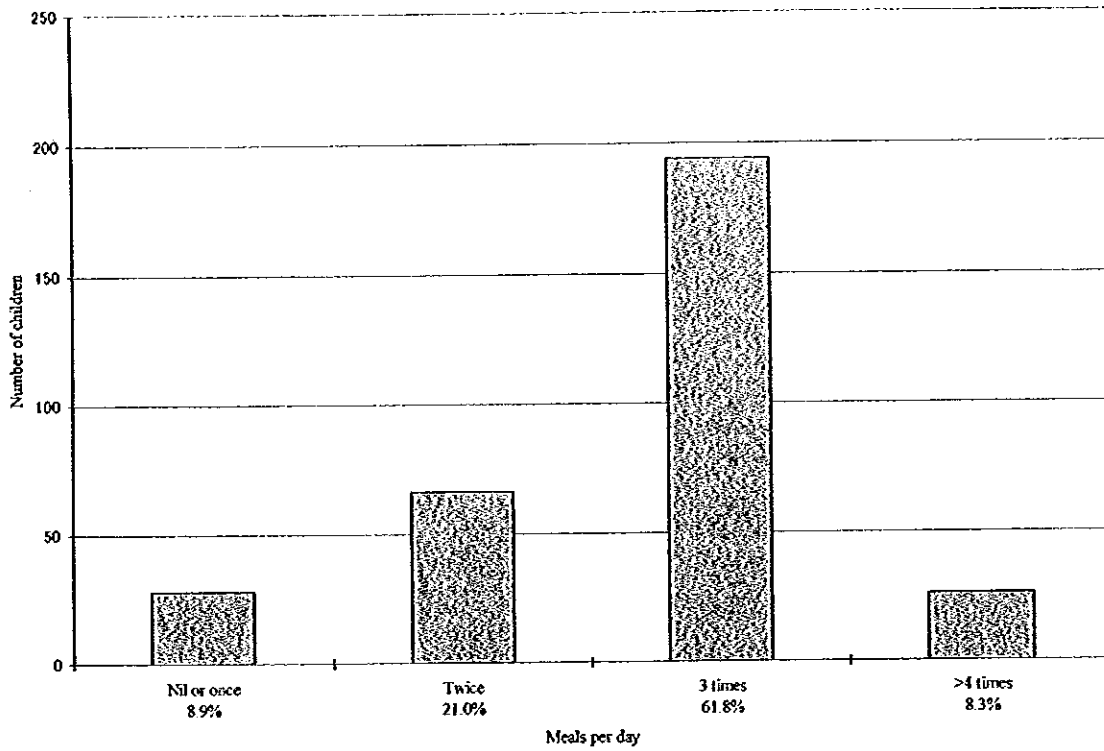


Fig. 2.4 Food Frequency (Eggs), In the South

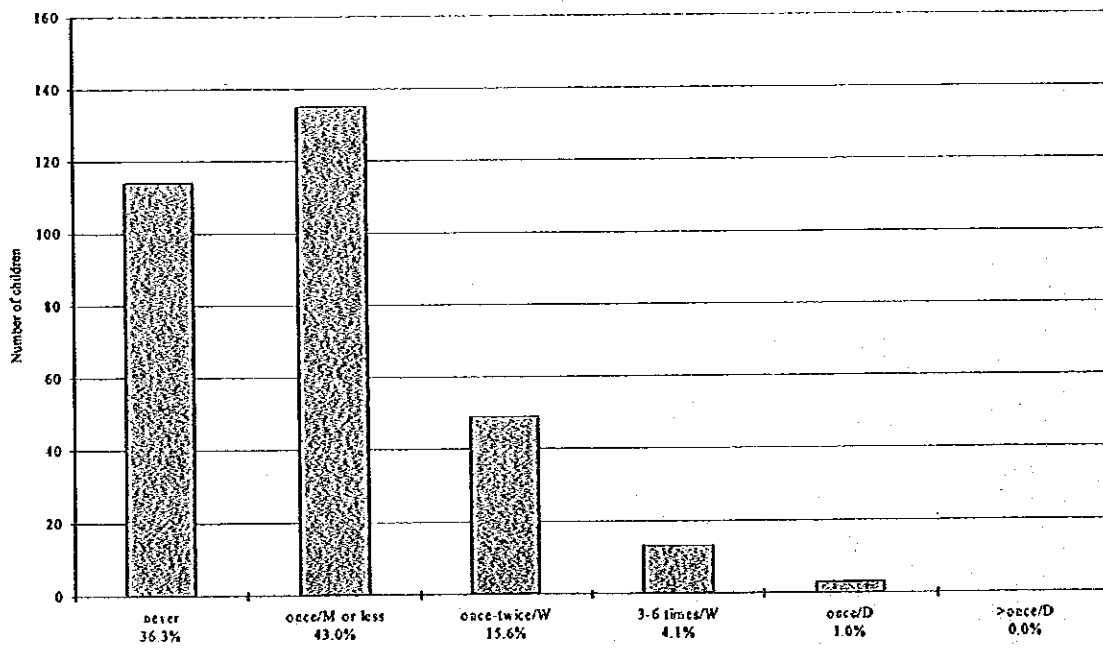


Fig.2.5 Weight for Age, Girls, In the North

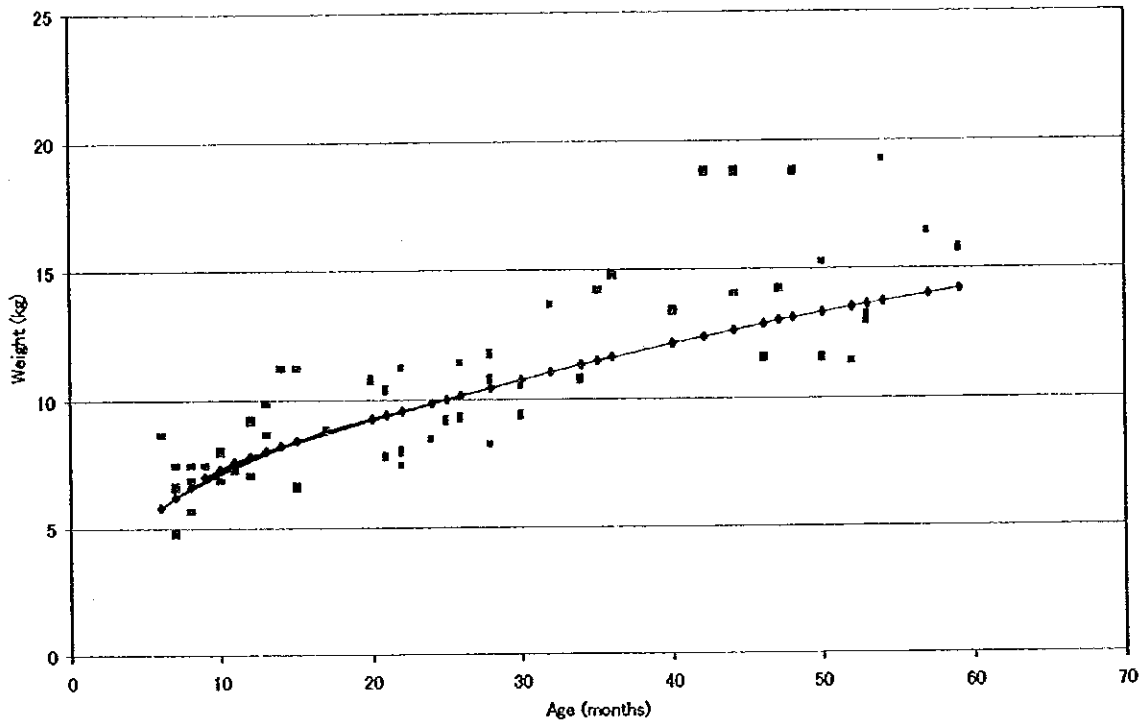


Fig.2.6 Weight for Age, Boys, In the North

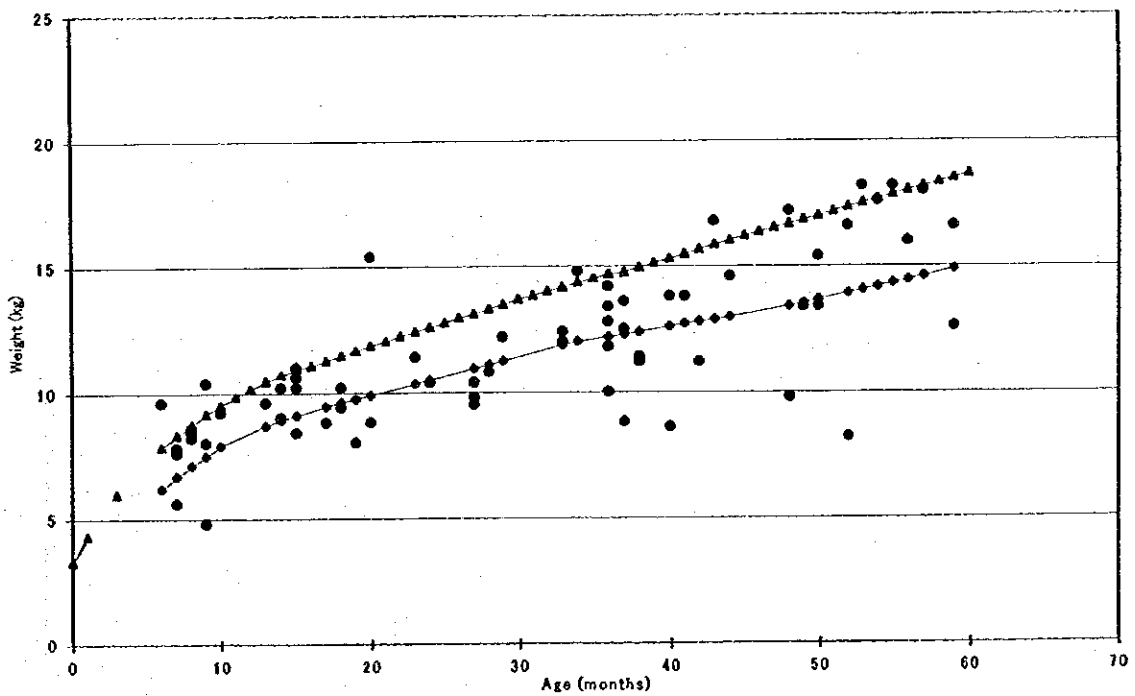


Fig. 2.7 Height for Age, Girls, In the North

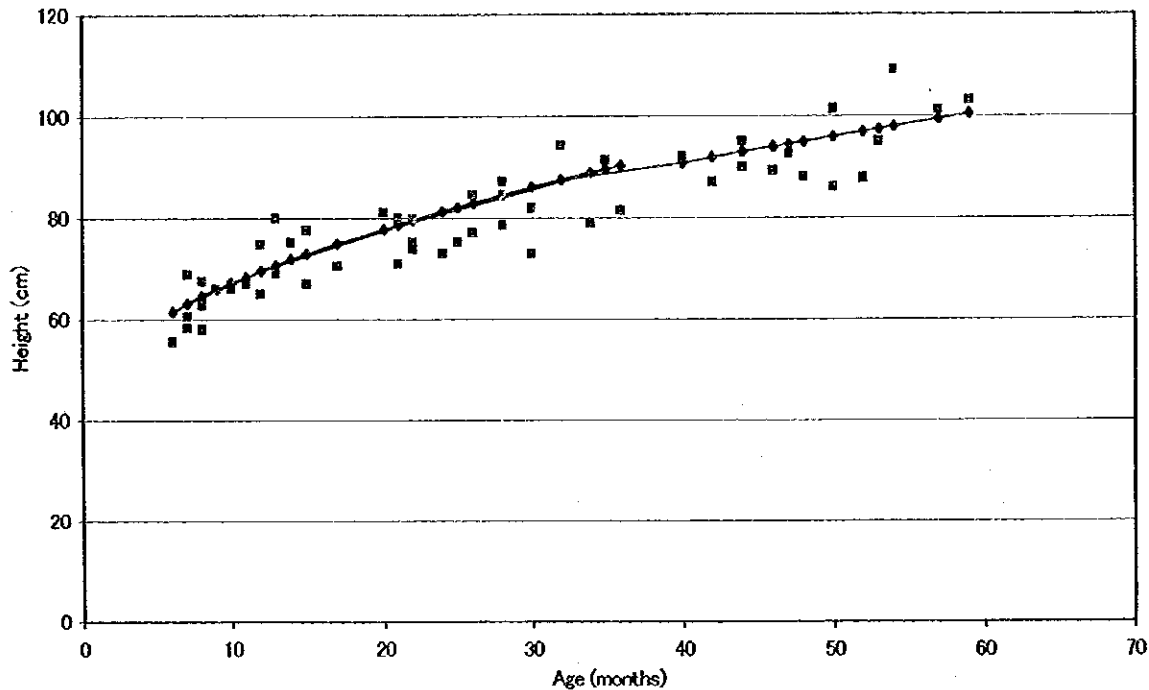


Fig. 2.8 Length/Height for Age, Boys, In the North

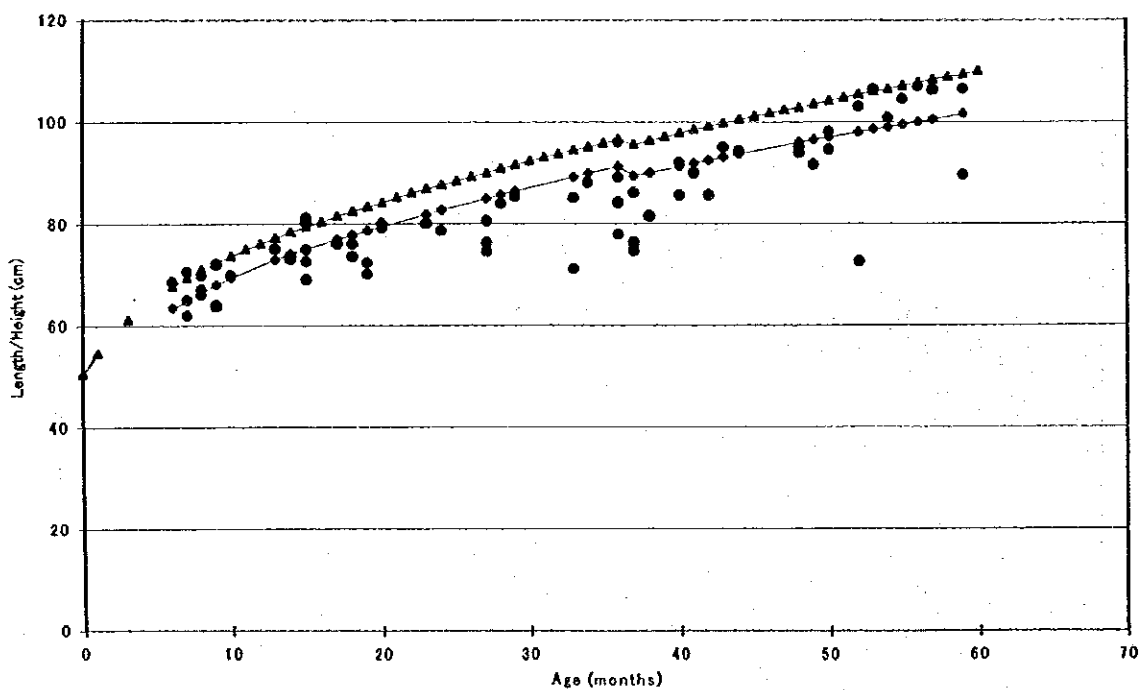


Fig. 2.9 Weight for Age, Girls, In the South

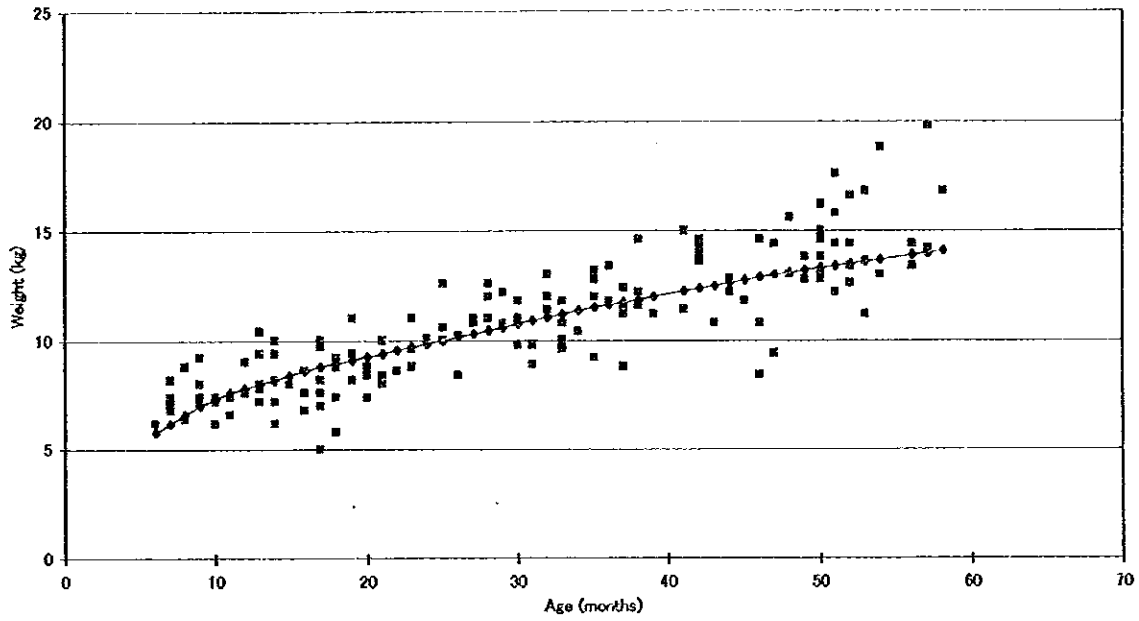


Fig. 2.10 Weight for Age, Boys, In the South

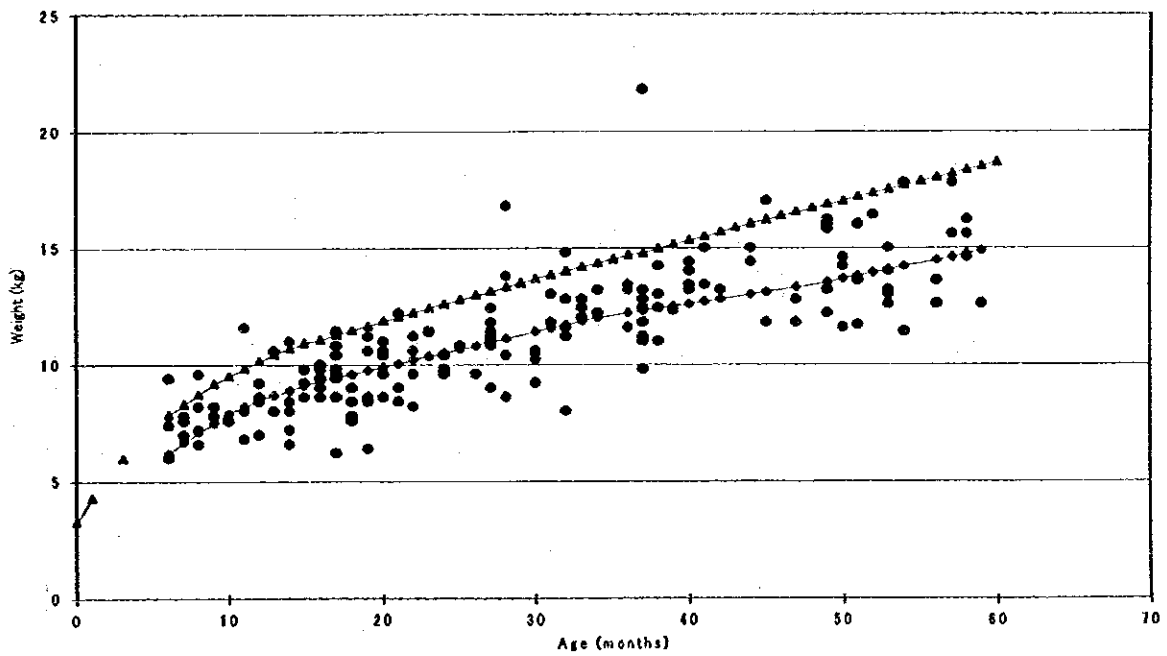


Fig. 2.11 Height for Age, Girls, in the South

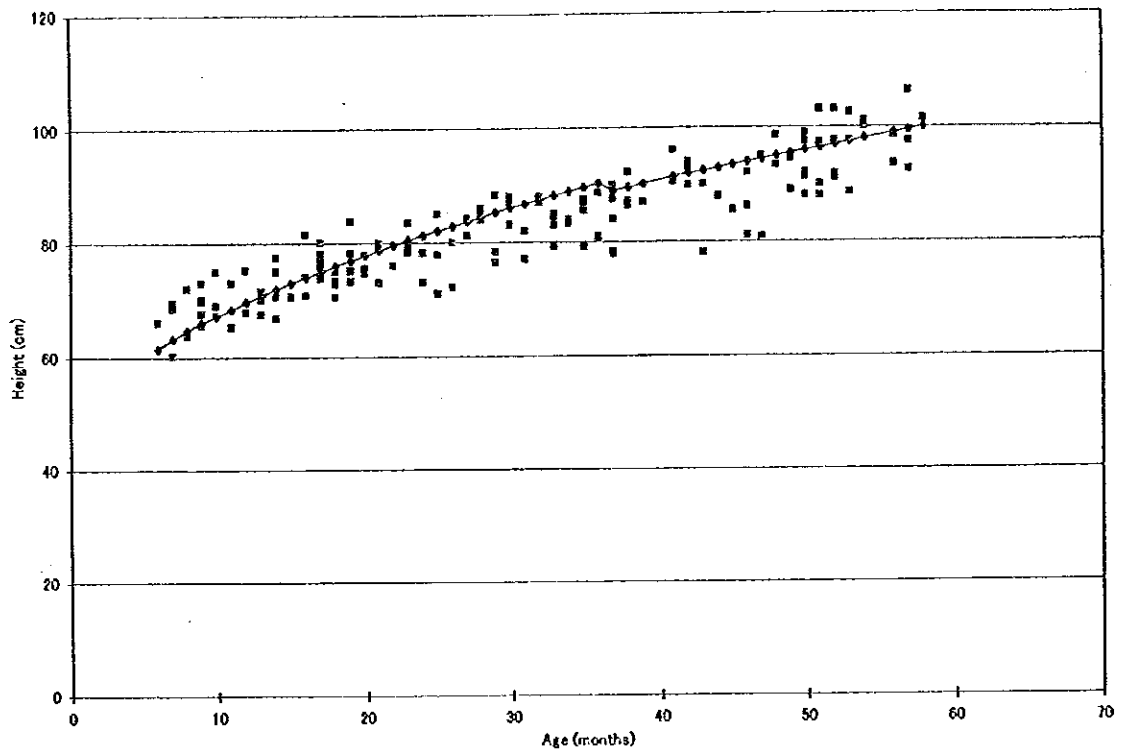


Fig. 2.12 Length/Height for Age, Boys, in the South

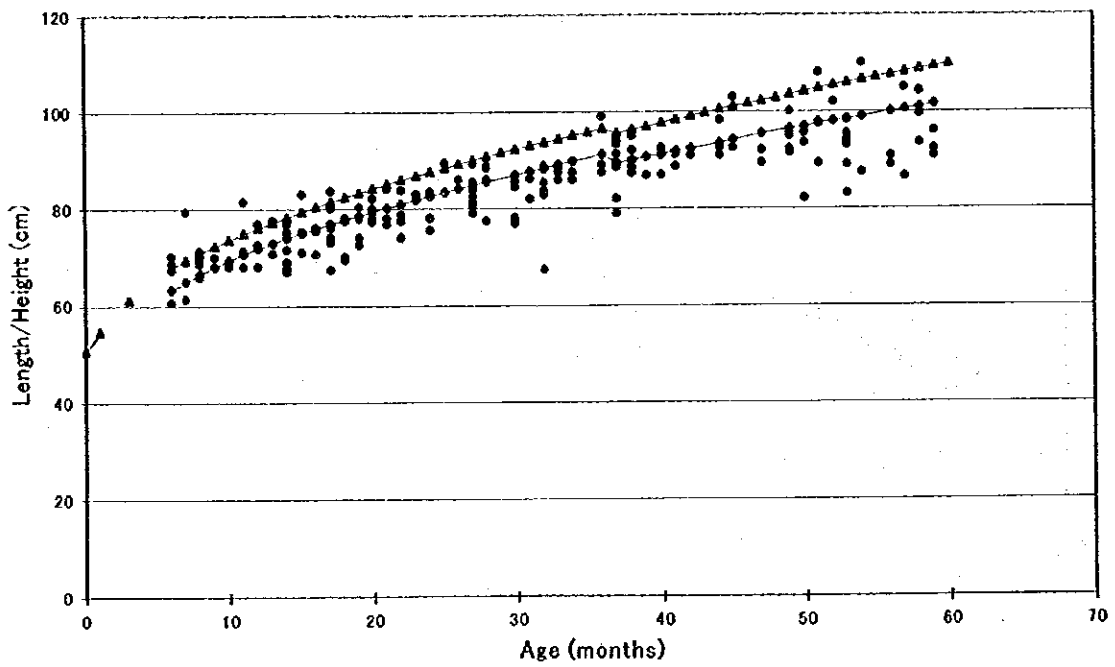




Fig. 2.11 Height for Age, Girls, in the South

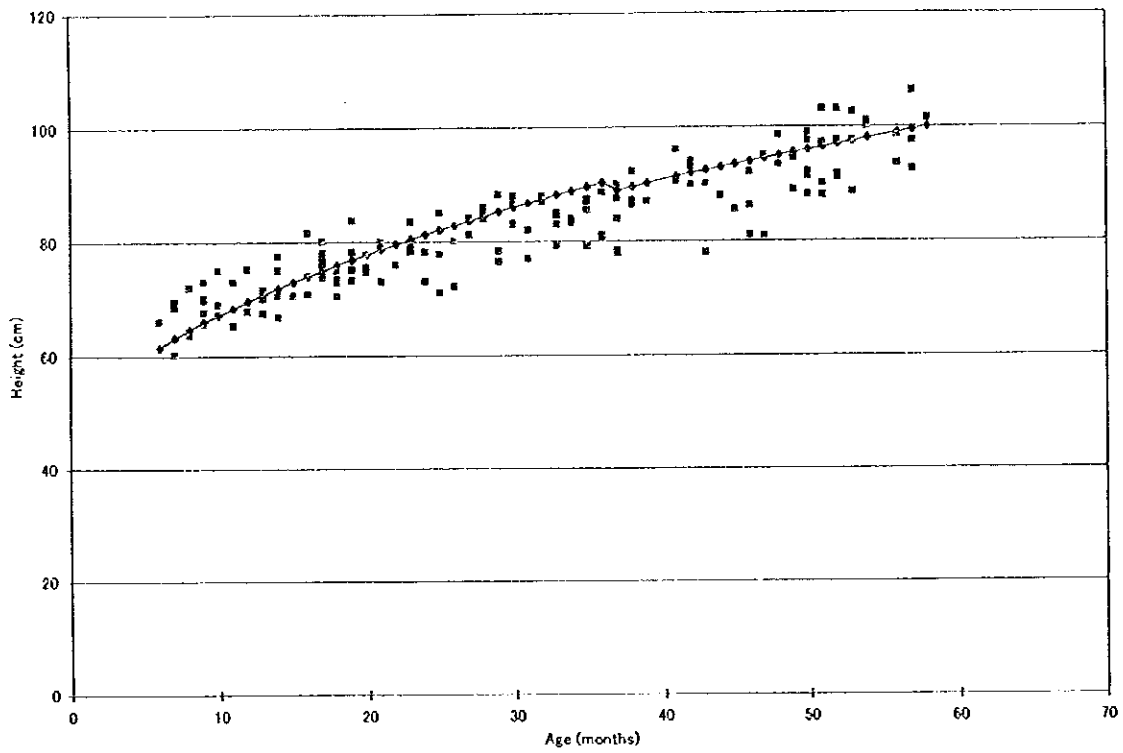


Fig. 2.12 Length/Height for Age, Boys, in the South

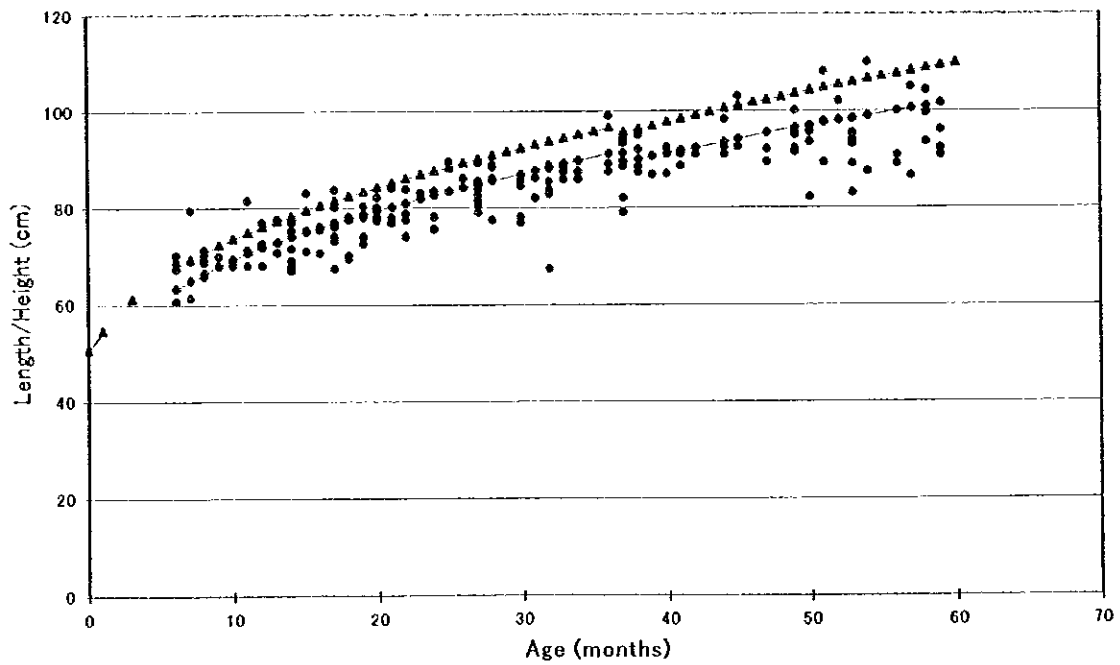


Fig. 2.13 Reasons for Choosing Health Facility for Antenatal Care

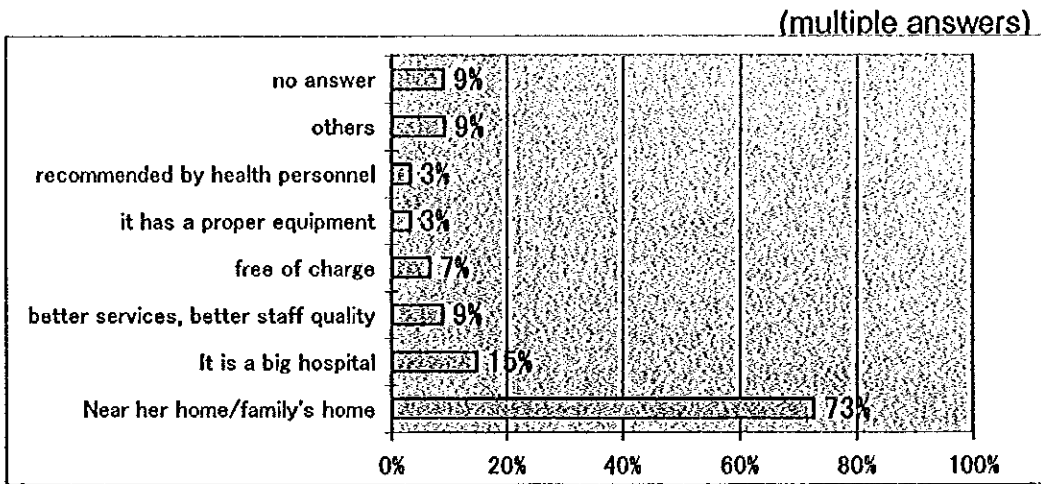


Fig. 2.14 Expectations towards Antenatal Care

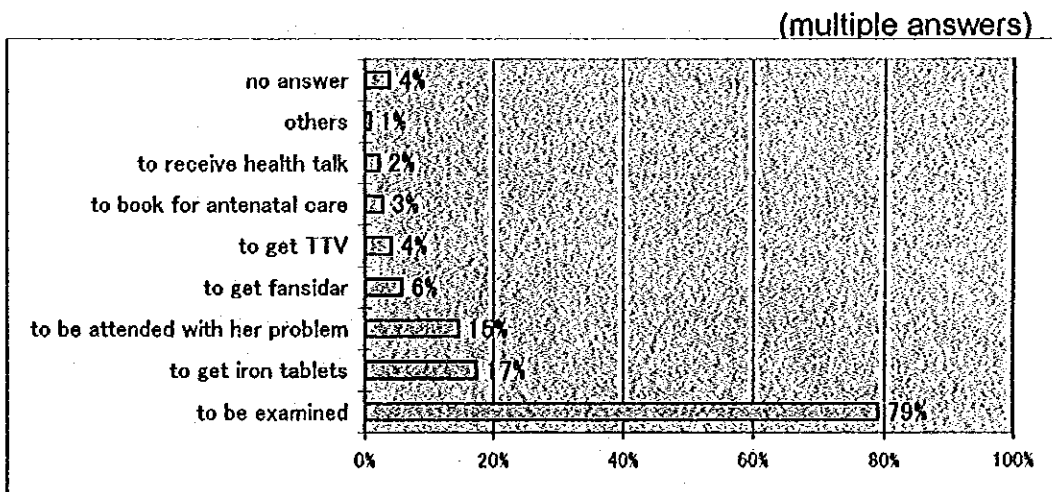


Fig. 2.13 Reasons for Choosing Health Facility for Antenatal Care

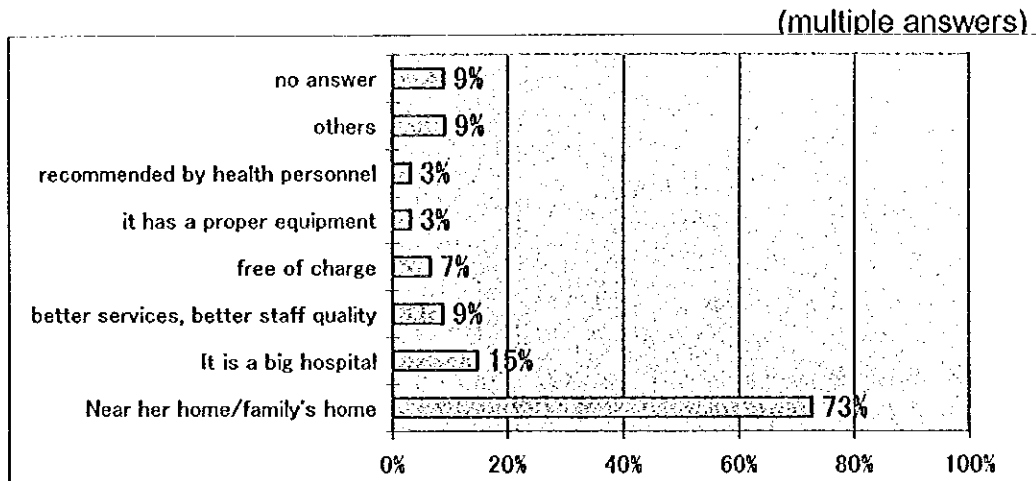


Fig. 2.14 Expectations towards Antenatal Care

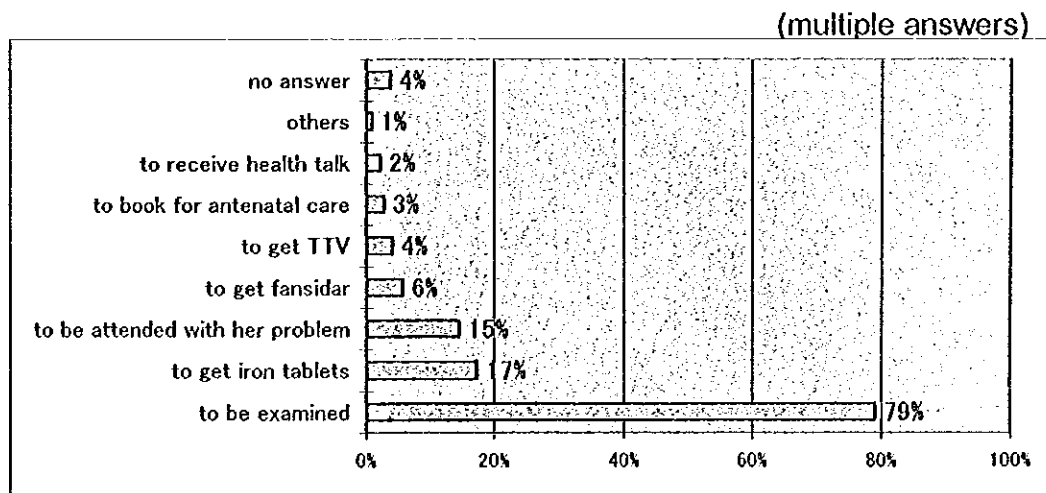


Fig. 2.15 Antenatal Health Services that the Clients are Satisfied with

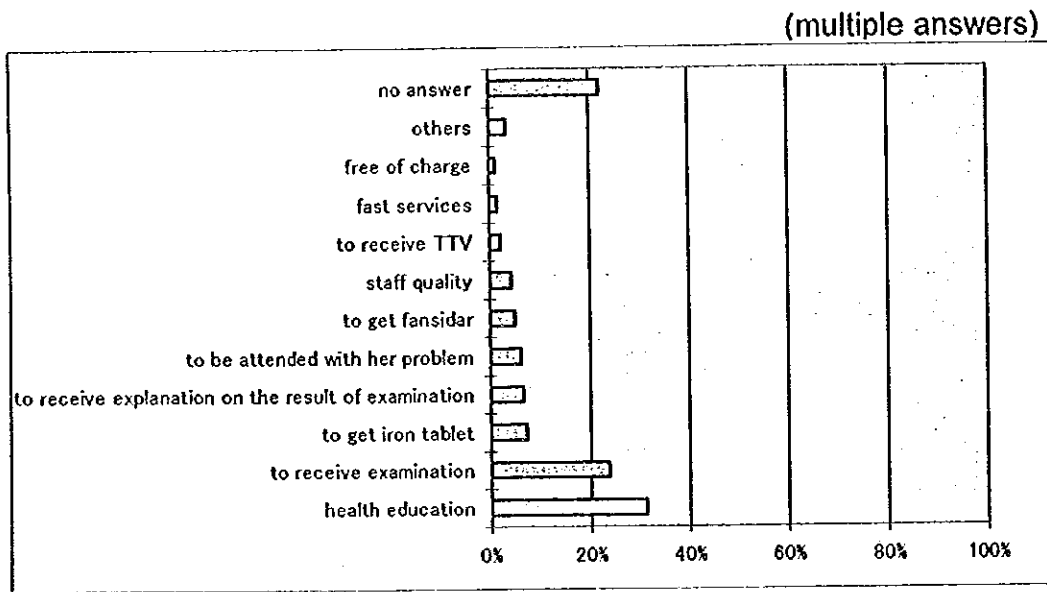
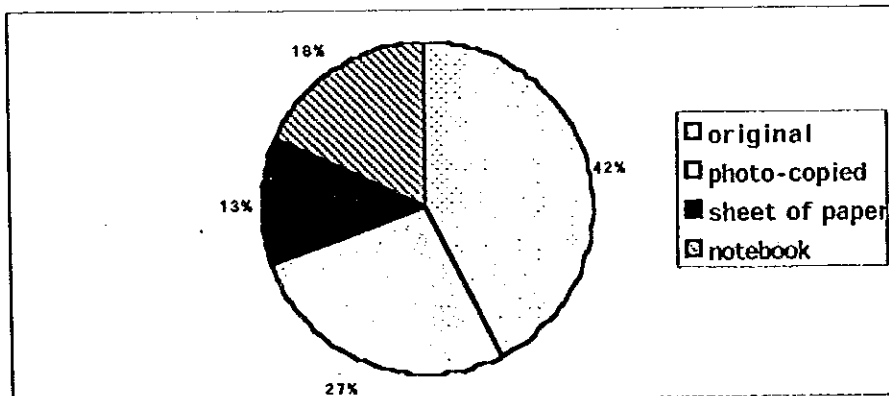
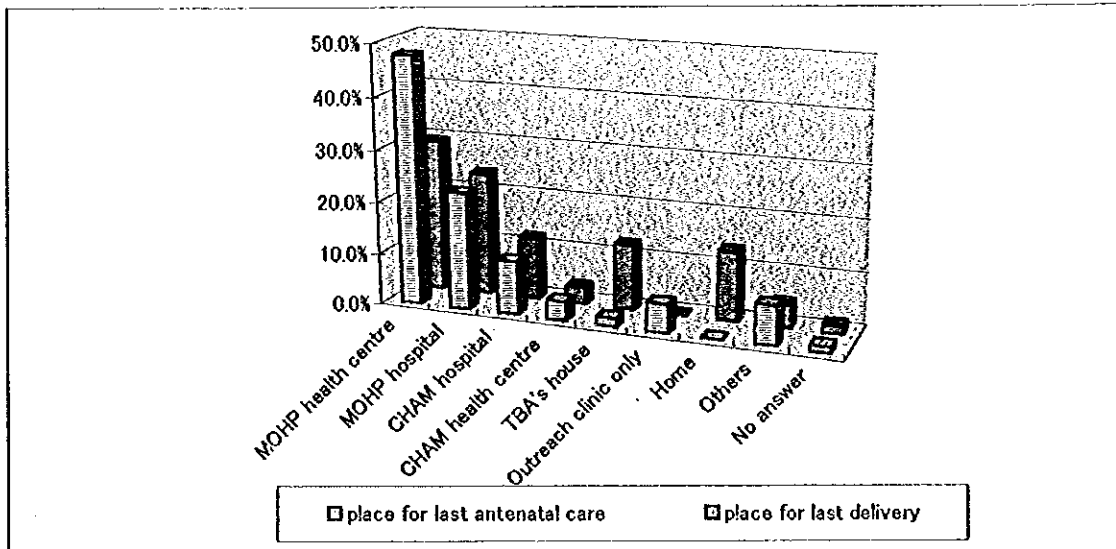


Fig. 2.16 Type of Antenatal Card that the Clients Brought with



**Fig. 2.17 Comparison between Place for Last Antenatal Care and Place for Last Delivery**



**Fig. 2.18 Percentage Distribution of the Clients who Delivered at TBA or Home Last Time, by Place of Last Antenatal Care**

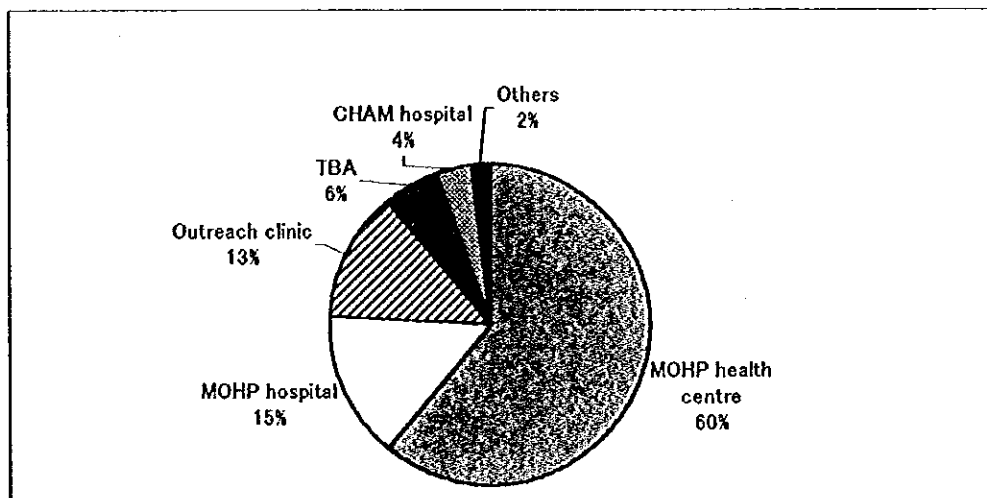


Fig. 2.19 Percentage Distribution of Antenatal Clients and Currently Married Women Age 15-49 In Malawi by No. of Children ever Born

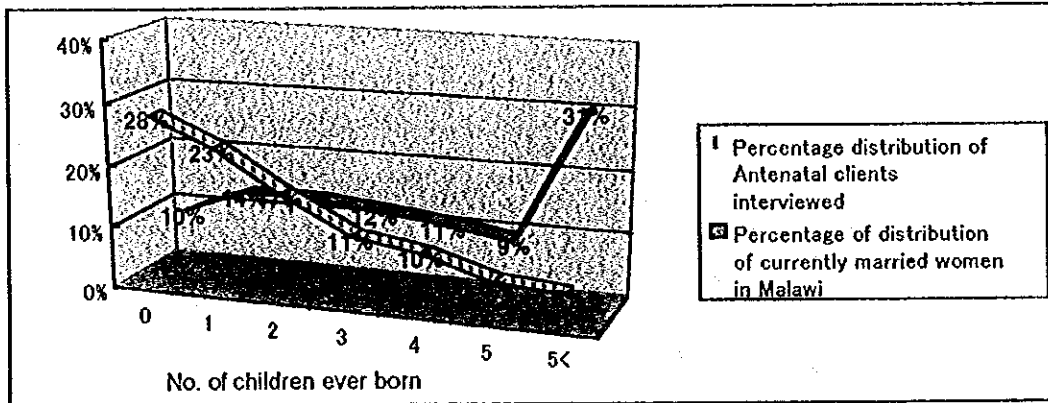


Fig. 2.20 No. of the Clients by no. of Antenatal Care Visit, by Weeks of Pregnancy

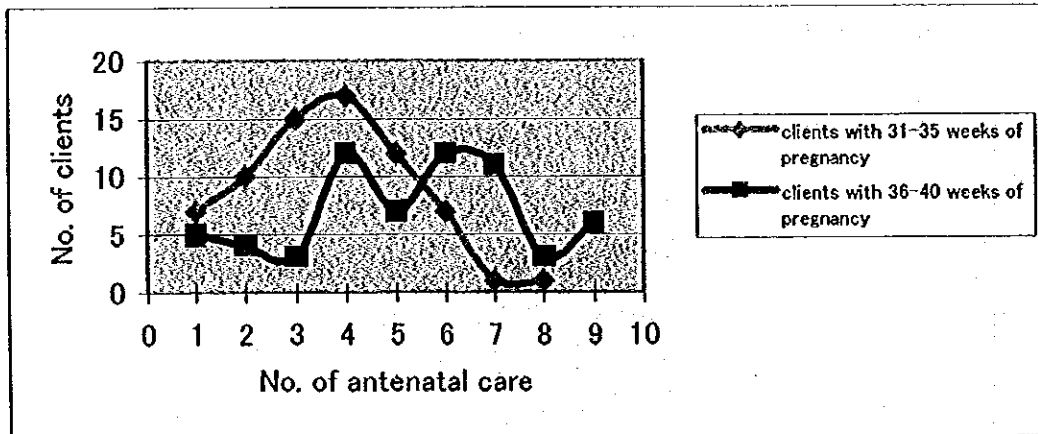


Fig. 2.19 Percentage Distribution of Antenatal Clients and Currently Married Women Age 15-49 in Malawi by No. of Children ever Born

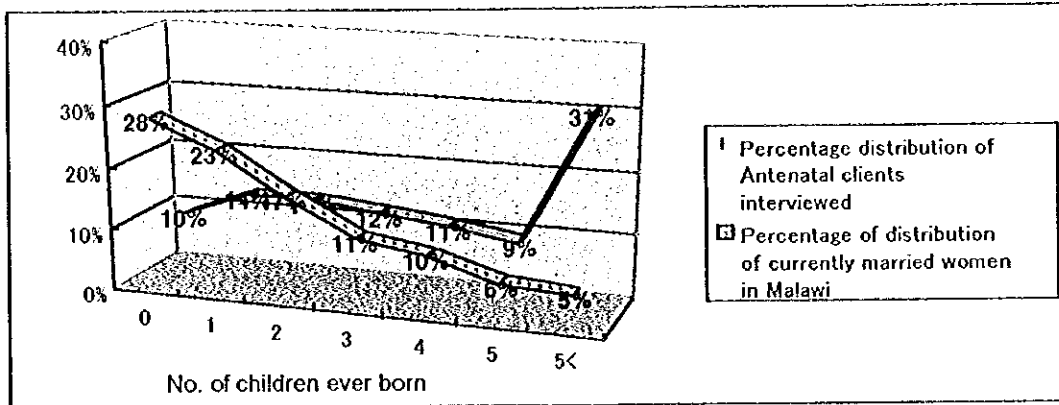


Fig. 2.20 No. of the Clients by no. of Antenatal Care Visit, by Weeks of Pregnancy

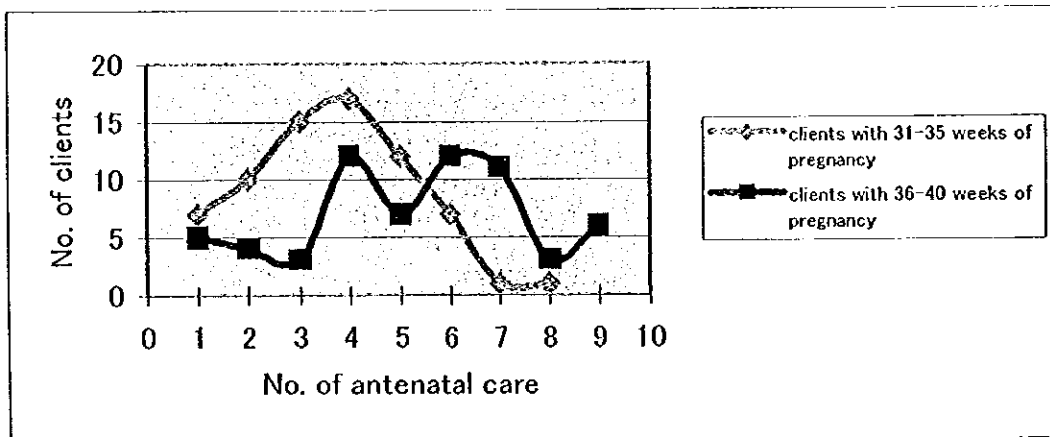


Fig. 2.21 Age Distribution of Women Interviewed for In-Depth Interview

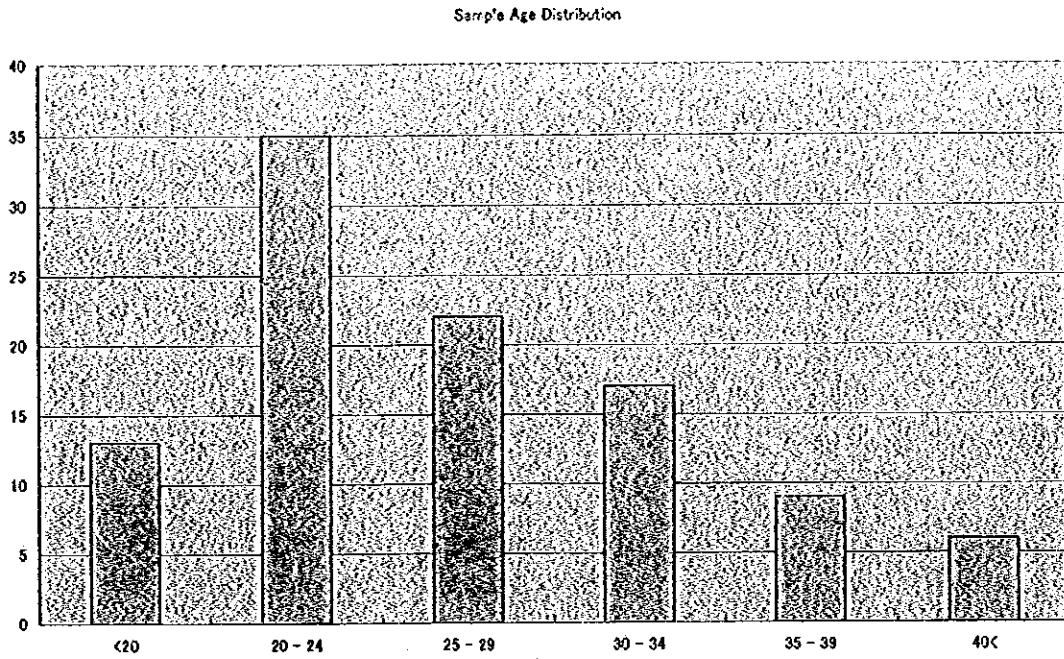


Fig. 2.22 Frequency of ANC Visit (In-Depth Interview)

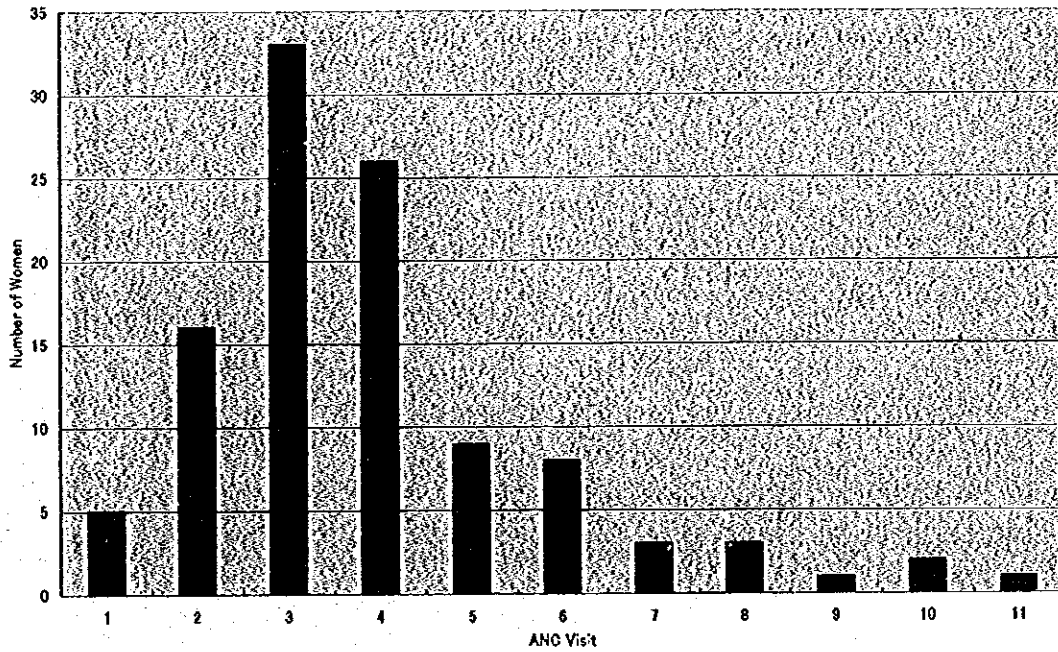




Fig. 2.21 Age Distribution of Women Interviewed for In-Depth Interview

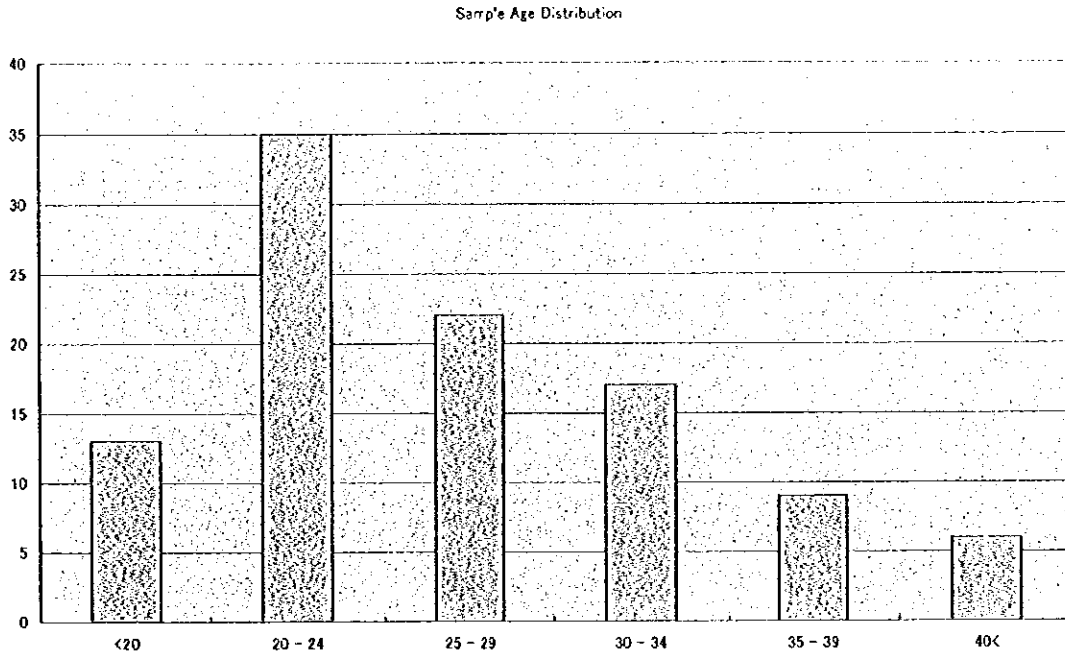
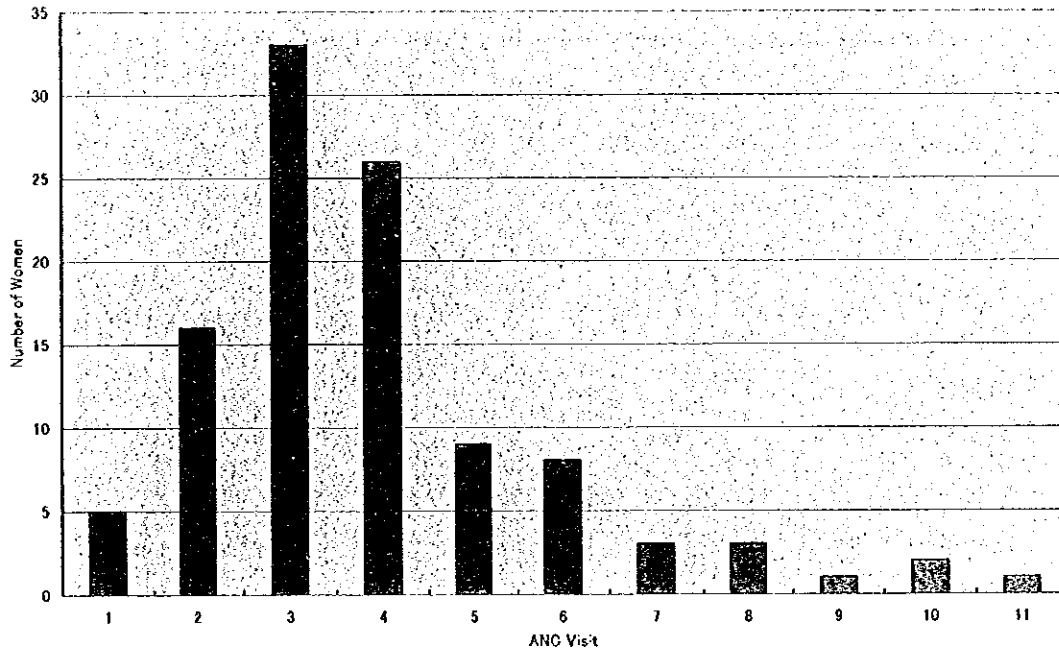
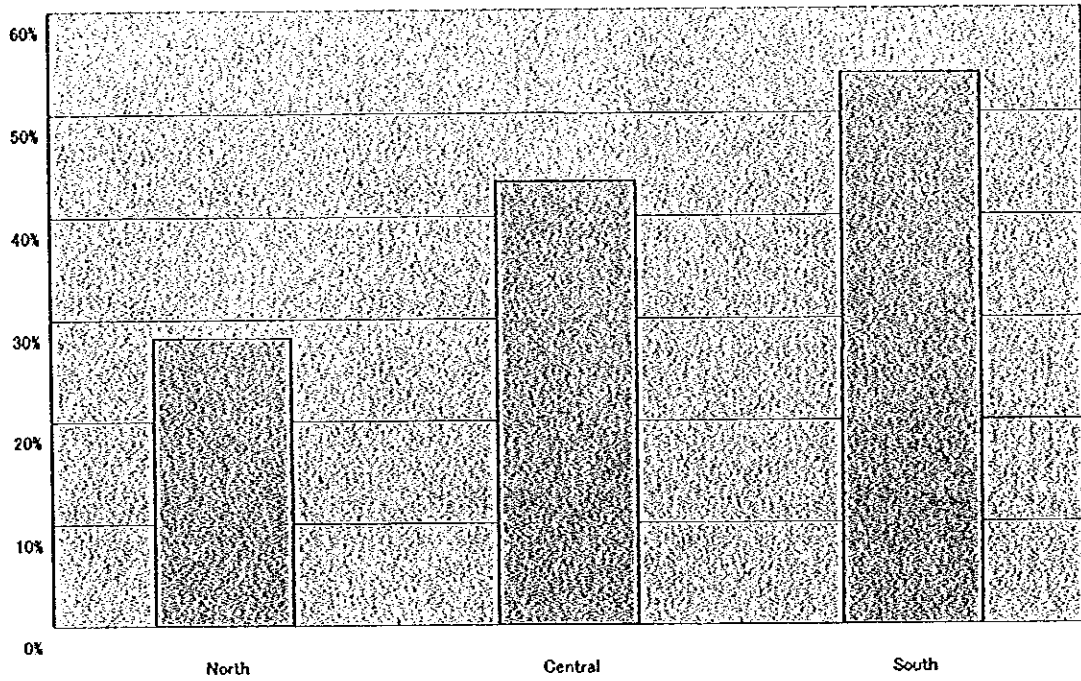


Fig. 2.22 Frequency of ANC Visit (In-Depth Interview)



**Fig. 2.23 Regional Difference in Water Coverage of Health Facilities**



**Fig. 2.24 Regional Difference in Health Facility Power Coverage**

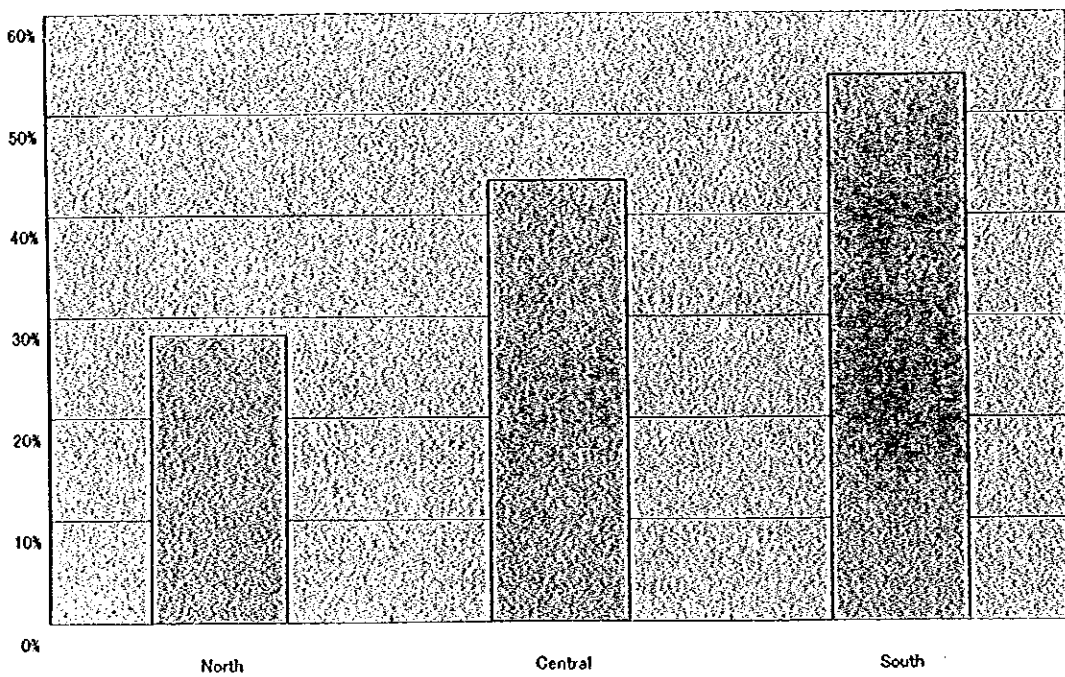
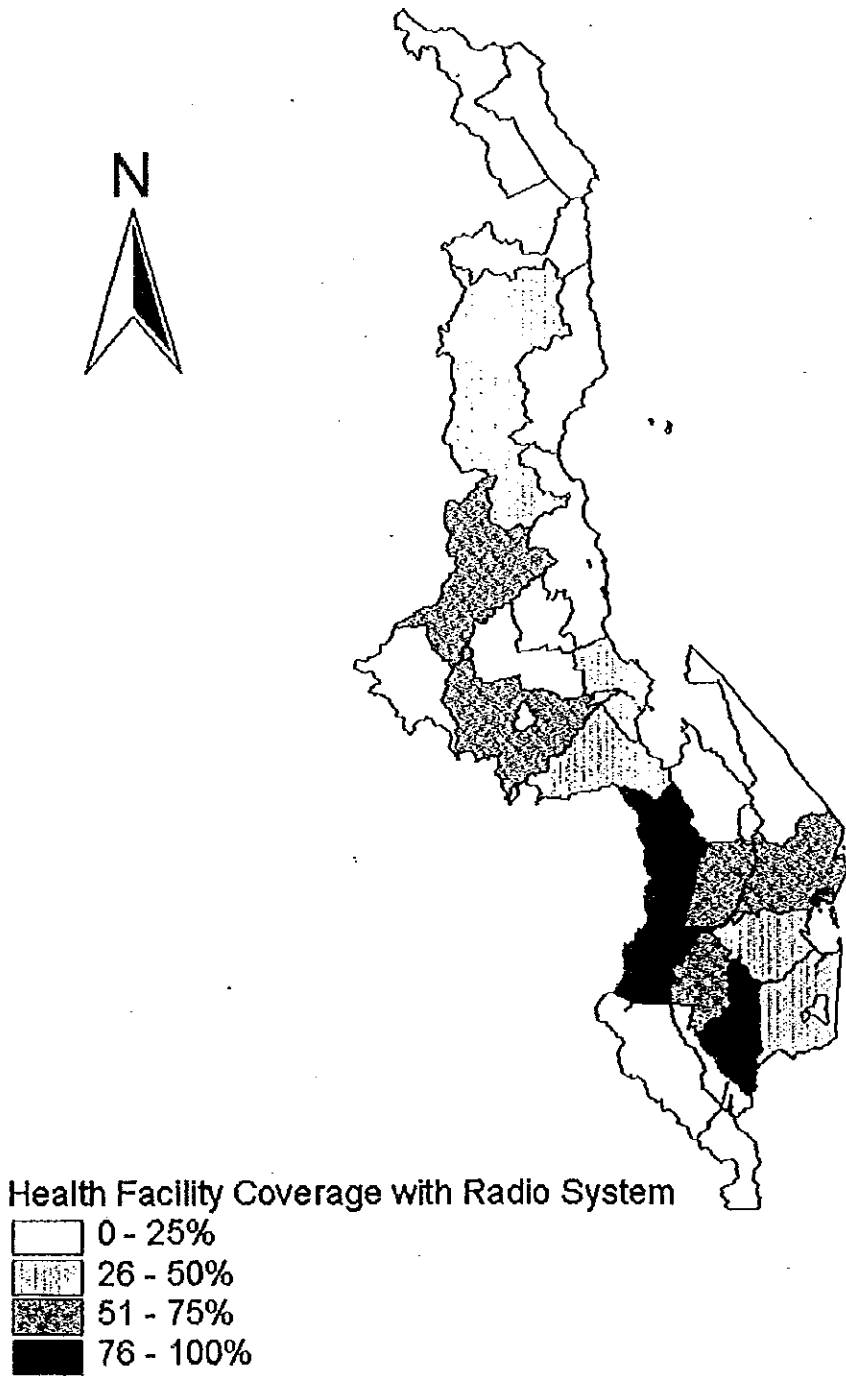


Fig. 2.25 District wise Radio System Coverage



# References

## List of References in Health Sector in Malawi

No.	Title/Sub Title	Date	Organisation
1	The Constitution of the Republic of Malawi		Government of Malawi (GOM)
2	Malawi Vision 2020	November, 1997	Ministry of Finance (National Core Team)
3	Health Policy Framework	October, 1995	Ministry of Health and Population (MOHP)
4	National Population Policy		Office of the President and Cabinet (OPC), Dept. of Economic Planning and Development
5	IBRD : Malawi Policy Framework Paper, 1995/96-1997/98	October, 1995	Prepared by the Malawian authorities in collaboration with the staff of the Fund and the World Bank (WB)
6	Budget Document No.4 : Economic Report 1997		Ministry of Economic Planning and Development (MOEP&D)
7	Budget Document No.4 : Economic Report 1992		MOEP&D
8	Budget Document No.4 : Economic Report 1991		MOEP&D
9	Malawi Government, Medium Term Expenditure Framework Draft Handbook	June, 1996	GOM
10	Approved Estimates of Expenditure on recurrent Account for the Financial Year 1997/98		GOM
11	Approved Estimates of Expenditure on Development Account for the Financial Year 1997/98		GOM
12	Vulnerability Assessment & Mapping (VAM), Malawi Baseline Survey 1996 : A Quest for Causality	1996	UN/WFP, MOEP&D VAM Committee/GOM,
13	Malawi : Human Resources and Poverty - Profile and Priorities for Action	November, 1995	The World Bank/Southern African Department
14	Malawian Children : The State of Health, Nutrition, Education, Water and Sanitation of Children in Malawi in 1995 : A Summary of the Malawi Social Indicator Survey 1995	July, 1997	Poverty Monitoring Unit, MOEP&D/UNICEF
15	Mzimba District Annual Report for the year 1996	1996	Mzimba District Hospital, MOHP
16	Malawi National Plan of Action for Malaria Control 1996-2000	October, 1995	WHO
17	EPI Coverage and Requirements for Malawi 1997-2001		UNICEF
18	Bilharzia, A manual for Community Health Workers in Malawi		MOHP
19	Minutes of a Briefing for Heads of Agencies and Diplomatic Missions on HIV/AIDS and Workplace Policy held on 6th May 1997 in the VIPHYA Room at the Capital Hotel	May, 1997	UNAIDS
20	A report on the evaluation of information, Education and Communication Materials on weaning and Complementary Foods in Malawi.	May, 1996	MOHP, World Food Programme
21	The Malawi AIDS Assessment Study, Draft	October, 1997	MOHP, WB
22	Profiles on Donor's Medium Term Development Plans : IMF & WB, EDF, USAID, UNDP, UNFPA, DFID	December, 1997	
23	The Public Sector Investment Programme (PSIP) : 1996/97 Financial Year	April, 1996	MOEP&D
24	UNDP Advisory Note for the Malawi/UNDP Cooperation Framework 1997/2001	February, 1997	UNDP
25	Proposed Government of Malawi - UNICEF Country Programme, 1997-2001	May, 1996	Donor & UNICEF Review & Discussion Meeting
26	Briefing Paper No. 7 : GTZ Supported Health Programme in Malawi : Project Presentations and Summaries, prepared for the Health and Population Donor Coordinating Committee	March, 1997	GTZ/Dr. C. M. Alwardt, MD/GTZ Health Programme Coordinator
27	A visitor's Guide to District Health Services Machinga	June, 1996	GTZ
28	Health programmes of the Malawi-German bilateral cooperation	August, 1997	German Embassy, Lilongwe
29	ODA Health and Population Projects-Malawi	January, 1997	ODA
30	UNFPA Health and Population Projects - Malawi 1997-2001		UNFPA
31	Malawi's Partners in Development : Profiles of Donors and Programmes	October, 1997	Office of the UN Resident Coordinator
32	Acute Respiratory Infections (ARI) Among Children Under Five, Sentinel Site Register (form)		MOHP
33	MOHP Project Activities 95/96 - Year 2000 (List)	1996	
34	Malawi Social Indicators Survey 1995 : A Survey of the State of Health, Nutrition, Water, Sanitation, and Education of Children in Malawi	September, 1996	MOEP&D, National Statistics Office (NSO), and Centre for Social
35	The Story of Medicine and Disease in Malawi : The 130 years Since Livingstone	October, 1992	Michael and Elspeth King/Montfort Press

### List of References in Health Sector in Malawi

No.	Title/Sub Title	Date	Organisation
36	Decentralization in Malawi : Local Governance and Development (Report for UNDP/Ministry of Local Government and Rural Development)	May, 1995	Prof. Raymond Apthorpe, Australia/Dr. Esau Chiviya, Zimbabwe/Mr. Gilbert Kaunda, City Council of
37	Local Government and Development Management Programme (MLW97/C01) : Programme Document		UNDP/UNICEF (UN Capital Development Fund)
38	Malawi National Plan of Action for Malaria Control Workplan 1996-1997	October, 1995	MOHP/WHO
39	The Non Government Organisations Act, 1997 (the First Draft)	1997	GOM & the Council for NGO in Malawi : CONGOMA (Richard Rosenthal, Specialist Legal Consultant South Africa with assistance from UNDP) Ministry of Women and Children Affairs, and Community development and
40	Implementation of the World Summit for Social Development in Malawi : Issues, Problems and Recommendations for Follow-up Action	February, 1996	
41	Capacity-Building of NGOs in Malawi : Identification of Potential NGO Training Institutions in Malawi and Assessment of Their Capacity (for	February, 1996	INTRAC (UK)
42	Marie Stopes International : Review 1996		Marie Stopes International (UK-NGO)
43	Banja La Mtsugolo (BLM) Annual Report 1996		Banja La Mtsugolo (BLM)
44	The Malawi Social Action Fund : Fact File - Total MASAF Project Approved to Date	April, 1997	MASAF Management Unit
45	Annual Report, Acute Respiratory Infection (ARI) Control Program 1997		E. R. Maganga, Community Health Sciences Unit (CHSU), MOHP
46	Trip Report (for assistance in identifying activities required for the design of a new USAID health - sector nonproject assistance and	1997	Oscar F. Picazo
47	Youth AIDS Project - Salima District 1997 : Baseline Survey		Care & Concern Youth Network (CACO)/Salima AID
48	Poverty Alleviation Programme : Health Task Force : Project Submissions	January, 1995	MOHP
49	Brief Report, Acute Respiratory Infections (ARI) in Malawi	December, 1997	E. R. Maganga, CHSU
50	1997-2001 UNICEF/GOM Health Programme Baseline Survey	November, 1997	UNICEF/MOHP
51	Malawi : Contraceptive Consumer knowledge, Attitudes and Practices Survey June-July 1995	December, 1995	Population Services International (PSI)
52	STAFH Evaluation : In-service Training in Syndromic Management of STDs, Malawi	July, 1997	JSI-STAFH
53	National Contraceptives Distribution and Logistics Management Information System (CDLMIS) : Training Impact Assessment July 21-August 8, 1997		H.D. Yhompson, JSI-EPLM Training and Logistics Advisor, C. Barton, Training National AIDS Control Programme, MOHP
54	Baseline Survey of STD Case Management	October, 1994	Family Health International (FHI)
55	Malawi AIDS Prevention project : Final Report	June, 1995	UNICEF/MOHP/Kamuzu College of Nursing, Univ. Malawi/Malawi Essential Drug programme/Consultant (funded by UNICEF/USAID) Support to AIDS and Family Health (STAFH)
56	Community Financing Experience and Options: A Study to Provide Baseline Information for Ministry of Health Decision-Making	March, 1995	
57	Condom Use in Marriage among Urban Workers and Their Wives (STAFH Report)	February, 1997	
58	5-Year IEC Strategic Plan.		
59	Civil Service Census, 1995 : Report on Census Results	March, 1996	Civil Service Census Executing Unit, office of the President and Cabinet
60	Directory of Non-Governmental Organisations in Malawi 1995		Compiled by Council for Non-Governmental Organisations in Malawi (CONGOMA)
61	Management Audit Report - Phase 1 : Situation Analysis (Expanded Executive Summary) (prepared under USAID Contract No.HNE-000-1-0-6031-00)	October, 1997	Management System International, INC. : Noel Marsh, Babu Deolalikar, S.S.
62	Financing and Efficiency of Education in Malawi	June, 1984	World Bank
63	Situation Analysis of Poverty in Malawi	1993	UN and GOM
64	Addressing Obstetric and Neonatal Complications in Africa from Community and Facility Perspectives	1998	JSI

## List of References in Health Sector in Malawi

No.	Title/Sub Title	Date	Organisation
65	Africare Malawi Ntcheu Child Survival Project, Evaluation of the Drug Revolving Fund Volunteer's Training	November, 1997	Africare
66	A Brief on UNICEF Lilongwe Programme (1997 to 2001), Water and Sanitation Programme Structure and Planned Projects		Kabuka Banda, UNICEF
67	Food Security and Nutrition Coordination in Malawi - A Review ( for Ministry of Economic Planning and Development)	January, 1996	Peter Mvula, Jane Banda
68	Policy Framework for Poverty Alleviation programme	October, 1995	PAP Coordinating Unit, MOEPD
69	Malawi Population Sector Report	1991	World Bank
70	Malawi Human Resources and Poverty Profile and Priorities for Action, Nov. 1995	March, 1996	World Bank
71	UNFPA Country Programme : Malawi (1997-2001)	May, 1996	UNFPA
72	Programme Review and Strategy Development Report No.51 : Malawi	1997	UNFPA
73	Salima District Annual Report 1993	June, 1994	Salima District Health Officer, MOHP
74	Malawi National Drug List 1995	1995	MOHP
75	Aide Memoire : Malawi Population and Reproductive health Project Identification Mission, June 29 - July 18, 1997	1997	World Bank
76	Population and Family Planning in Malawi: A Common Nexus Approach (working draft)	July, 1997	GOM, World Bank
77	The Malawi Prescriber's Companion	September, 1993	MOHP
78	Malawi Government, Basic Health Statistics 1994 Report 18	August, 1996	Community Health Sciences Unit, MOHP
79	Integrated Household Survey - Interviewer's Manual, Nov. 1997 - Oct. 1998		National Statistical Office
80	The Health Surveillance Assistants programme in Malawi	August, 1997	H.R.D.C. Mbengo-Mbewe, MOHP
81	The PHC Programme in Malawi	August, 1997	H.R.D.C. Mbengo-Mbewe, MOHP
82	Country Cooperation Frameworks and Related Matters : First Country Cooperation Framework for Malawi (1997 - 2001)	July, 1997	UNDP
83	The Cost of the District Hospital : A Case Study from Malawi : by A.J. Mills, Aug. 1991	1991	Population and Human Resources Department, The World Bank
84	AIDS in Malawi. An annotated bibliography		STAFH
85	Malawi, Population and Housing Census 1987 - Summary of Final Results, Vol 1	July, 1991	National Statistical Office
86	Community Empowerment Process for Health Development in Malawi : A Working Manual for Community Workers (Draft)		
87	Anaemia in Malawi, A situation analysis 1998, Final Draft	May, 1998	MOHP, Task Force on Anaemia
88	Monitoring for Empowerment (M4E)	October, 1995	MOEP&D, MOH, MOAgriculture, others
89	Essential Health Service Delivery : A Costing Study of Kasungu District Hospital and its Peripheral health Facilities by Khoti Gausi (Consultant)	March, 1997	UNICEF
90	Analysis of Public Expenditure on Health in Malawi, Main Report	August, 1998	MOHP (Maxton Grant Tsoka, Takondwa Mwase)
91	Malawi Institute of Management (MIM): Prospectus 1995		Malawi Institute of Management
92	PHN Sector Credit 2220-MAI : Progress Report - January to June 1997, September 1997	September, 1997	MOHP
93	Annual Report 1996, Mua Hospital		Mua Hospital
94	Report of a Workshop on Strengthening Co-ordination and Collaboration in the Health Sector, Jan. 10-21, 1993 in Mangochi		MOHP
95	Appraisal Mission Report for the Project : Support to the District health System of the Southern province. Malawi. Feb. 12-Mar.10, 1996.	May, 1996	GTZ (prepared by Consultants)
96	Malawi Statistical Yearbook 1995	September, 1996	National Statistical Office
97	District Specific Survey 1996 : Zomba District		GOM
98	Family Planning Knowledge, Attitudes and Practices, Machinga District 1993 : Report on a Baseline Survey Commissioned by the Machinga District health Office and GTZ/Lwonde	May, 1994	Paula Tabrow, Centre for Social research, Univ. of Malawi
99	Community Based Therapeutic Feeding Programme : An Evaluation of CPAR's Programme	June, 1996	Stanley W. Khaifa, Centre for Social research. Univ. of Malawi
100	Malaria Case Management in Children in Malawi : the Case of Namasalima : A Report of a Rapid Ethnographic Study	May, 1996	T.J. Bisika, Centre for Social Research, Univ. of Malawi
101	Baseline Survey of Health Centre Activities in Salima District	September, 1996	Compiled by Dr. Nakano
102	Machinga District Annual Report 1996		Machinga District Health Office

## List of References in Health Sector in Malawi

No.	Title/Sub Title	Date	Organisation
103	Zomba Central hospital Annual Report 1995		Zomba Central hospital
104	Chikwawa District Annual Report 1995	February, 1997	H. M. Luhanga, Chikwawa District Hospital
105	Briefing Paper No.2, Strengthening of the District Health Services in Machinga	November, 1996	GTZ
106	ECONOMIC REPORT 1997		MOEP & D
107	Machinga District Physical Development Plan	June, 1987	OPC, Department of Town & Country Planning
108	Primary health Education, Book 5	1993	Dzuka Publishing Company Limited
109	Monthly Statistical Bulletin, August 1997		National Statistical Office
110	School Atlas for Malawi	1992	Dzuka Publishing Company Limited
111	A Geography of Malawi	1997	A.&D.M.Young, Evans Brothers Limited
112	Monthly State of Exchange Return	March, 1995	Department of Post & Telecommunications
113	Population, health & Nutrition Sector Projects (PHN), Civil Works	October, 1997	Project Implementation Unit (PIU)
114	Christian Health Association of Malawi (CHAM)		CHAM
115	Baseline Survey of Physical Assets Providing Medical Services to the General Population, Nkhata Bay District	August, 1997	S. Miller
116	Basic Education Statistics, Malawi 1996	December, 1996	GOM
117	Basic health Statistics	1995	MOHP
118	Blantyre City Report : Findings from the Sub-Saharan Africa Urban Family Planning Study	March, 1995	CAFS, JSI, etc.
119	Breastfeeding Management and Promotion in a Baby-Friendly Hospital	1993	UNICEF/WHO
120	Briefing on the Bakili Muluzi Health Initiative	January, 1999	MOHP
121	Briefing on the HIV/AIDS Epidemic in Malawi.	January, 1999	MOHP
122	Briefing on the Population Sector in Malawi	January, 1999	MOHP
123	Child Survival 12 Baseline Survey Report, Mandiana Prefecture		Save the Children, Guinea Field Office
124	Community Assessment Planning for Maternal Child Health Programmes, Participatory Approach in Ethiopia		BASICS
125	Community Health Volunteers in Malawi	December, 1996.	Peter Mvula, Thomas Bisika, Center for Social Research, University of Malawi
126	Community Mobilization to Address the Impacts of AIDS	January, 1998	USAID
127	Condom Use in Marriage Among Family Planning Providers in the Cities of Blantyre, Lilongwe and Mzuzu	May, 1997	STAFH
128	Consultancies Under the Salima District Health Project	1998	SCF (UK)
129	Controlling Cholera, Checklist for Planners	1996	BASICS
130	Core Indicators for Child Health and Nutrition Interventions: A Reference for Child Survival Programme Managers	May, 1998	John Murray, John MacArthur, Sandhya Rao, David Pyle, Eckhard Kleinau, Dr. Ruth Kornfield, Dorothy Namate, JSI-STAFH Project
131	Cultural Practices Related to HIV/AIDS Risk Behaviour Community Survey in Phalombe, Malawi.	November, 1997	STAFH
132	Cultural Practices Related to HIV/AIDS Risk Behaviour: Focus Group Discussion of Village Leaders in Phalombe	January, 1997	STAFH
133	Decentralization in Malawi.		Ministry of Local Government and Rural Development (MOLGRD)
134	Declaration of Alma-Ata		
135	Demographic and Health Survey 1992	January, 1994	National Statistical Office
136	Demographic and Health Surveys-Phase II, Model "B" Questionnaire with Commentary for Low Contraceptive Prevalence Countries	December, 1990	Institute for Resource Development/Macro Systems, Inc. Columbia, Maryland
137	DFID Health Sector Strategy Malawi	February, 1999	DFID
138	Diagnostic and Treatment Services		
139	Dissemination of Research Findings, Recommendations and STAPH Project Experiences and Lessons Learned in Malawi	April, 1998	STAFH
140	District Development Planning Handbook	March, 1998	OPC, Department of District and Local Administration
141	District Guidelines, Draft	June, 1998	MOHP
142	District Health Office Management Audit, Draft Report	April, 1998	MOHP/USAID



## List of References in Health Sector in Malawi

No.	Title/Sub Title	Date	Organisation
143	District Health Office Management Audit, Summary of Recommendations	April, 1998	MOHP/USAID
144	Drug Revolving Fund (DRF) Guidelines		MOHP
145	Economic Report 1998	1998	GOM
146	Ekwendeni Hospital-Annual Report 1998		CCAP Synod of Livingstonia
147	Elimination of illiteracy in Malawi, A Joint UNESCO-Malawi Government Technical Report	1983	UNESCO-Malawi Government
148	Embangweni hospital, Annual Report 1998		CCAP synod of Livingstonia
149	Emphasis Behaviors Maternal and Child Health	September, 1997	BASICS
150	Employer-Based Programs in Maternal and Child Health		Project Hope, BASICS
151	Environmental Health Project, Activity Report No. 58	March, 1999	USAID
152	Evaluation of AIDS Education in the Classroom: A National Survey	March, 1997	STAFH
153	Female Condom Acceptability Among Family Planning Clients of Blantyre City	April, 1997	STAFH
154	Fourth National Health Plan "Steps Toward a Logical Framework"	January, 1999	MSI, submitted to USAID, Malawi
155	Gender-Focus for the German Technical Cooperation with Malawi	August, 1996	GTZ
156	Malawi Social Action Fund, Public Works Programme Implementation Handbook	March, 1996	MASAF Management Unit
157	Guide for the Management of Malaria	September, 1997	MOHP
158	Guidelines for the Control of Shigella Dysenteriae Type 1 in Malawi	March, 1995	The National CDD Programme
159	Guidelines for the Development of a Simplified Dietary Assessment to Identify Groups at Risk for Inadequate intake of Vitamin A, A Report of the International Vitamin A Consultative Group	July, 1989	The International Vitamin A Consultative Group (IVACG)
160	Guidelines for the Development of Primary Health Care	January, 1982	PHC Working Committee
161	Health and Population Occasional Paper, Sexual Health and Care: Sexual Transmitted Infections Guidelines for Prevention and Treatment		Overseas Development Administration
162	Health and Population Occasional Paper, Sexual health and Health Care: HIV, AIDS and Sexually Transmitted Infections, Global Epidemiology, Impact and prevention		Overseas Development Administration
163	Health Seeking Behavior and Partner Notification By Clients with Sexually Transmitted Diseases (STDs) in Malawi, An Ethnographic Approach, The Role of Traditional Healers in the Management of Sexually TransmittedDiseases (STDs) in Malawi: A Case Study of Lilongwe, Nkhata-Bay Districts		STAFH Project
164	Health Seeking Behaviour and Partner Notification by Clients with Sexually Transmitted Diseases (STDs) in Malawi: An Ethnographic	December, 1997	STAFH
165	Health Shelter Food Security Leaning		Department of District and Local
166	Hearth Nutrition Model: Applications in Haiti, Vietnam and Bangladesh		Olga Wollika, Erin Keeley, Barton R. Burkhalter, Naheed Bashir, World Releif, BASICS
167	Horticulture in Malawi, A quarterly magazine	1999	GTZ
168	Information on Malawi Expanded Programme on Immunization		EPI/MOHP
169	Information, Education and Communication Campaign on STDs, HIV and AIDS	June, 1998	Banja La Mtsogolo
170	Information, Education and Communication Messages and Materials	December, 1991	MOH
171	Integrated Management of Childhood Illness (IMCI)		WHO, UNICEF
172	Interview of Facility In-Charge		SCF
173	Knowledge, Attitudes and Practices in Health Survey 1996	September, 1997	National Statistical Office
174	Department for International Development (DFID) Health and Population Projects-Malawi	January, 1998	J. Allan, DFID
175	Living on the Edge, A Study of the Rural Food Economy in the Mchinji and Salima Districts of Malawi	March, 1996	Julie Pearce, Austin Ngwira, George Chimseu, Save the Children (UK)
176	Making Motherhood Safe for Malawian Women	January, 1995	MOH
177	Malawi District Development Planning Manual	November, 1995	Ministry of Local Government and Rural Development (MOLGRD)
178	Malawi Expanded Programme on Immunization, 1985-1989 Five Year Implementation Plan		MOH
179	Malawi Expanded Programme on Immunization and Micronutrient Control Programme, Guide for National Measles Immunization Week and National Vitamin A Supplementation Week	1998	MOHP
180	Malawi National Health Plan 1999-2004	May, 1999	MOHP

### List of References in Health Sector in Malawi

No.	Title/Sub Title	Date	Organisation
181	Malawi National Safe Motherhood Programme		Malawi National Strategic Plan for Safe Motherhood, MOH
182	Malawi Polio Immunization Campaign, 1997		MOHP.
183	Malawi Programme Plan of Operation for Health, for the Period 1997-2001	May, 1996	GOM, UNICEF
184	Malawi Progress Report on Africa 2000 (Water & Sanitation)	August, 1997.	A. J. C. Kawanga
185	Malawi Safe Motherhood Needs Assessment, Draft	May, 1995	MOHP
186	Malawi Safe Motherhood Project, Six Monthly Report for the Period January to June 1999	July, 1999	Project Management Unit
187	Malawi Social Action Fund (MASAF), Policy and Regulatory Framework in Urban Areas, Draft	January, 1998	MASAF
188	Malawi Standard Treatment Guidelines, 2nd Edition 1993	1993	MOHP
189	Malawi, 1993 and 1994 Biannual Report	December, 1995	MOEP&D
190	Malawi, Programme Plan of Operation for Health for the Period 1997-2001	May, 1996	GOM, UNICEF
191	Malawi The Child and the Nation		UNICEF
192	Malawi: Decentralisation Policy Implementation (Capacity Assessment and Resource Needs Study), Draft	August, 1996	GOM, UNDP
193	Malnutrition Management for Malawi	May, 1992	Dr. Andrew Mortimore, Regional health Office
194	Managing External Resources in the Health Sector in Malawi	December, 1997	Peter Mvula, Alister Munthali, Centre for Social Research
195	Marie Stopes International's Partner in Malawi	June, 1998	Banja La Mtsogolo, JICA
196	MCHS Annex 9: Summary of Strategic Plan	December, 1997	
197	Meeting of Commonwealth Health Ministers	May, 1997	Commonwealth Secretariat
198	Micronutrient and Health Programme Baseline Survey Report	May, 1997	MICAH
199	Ministry of Health and Population District Guidelines, Draft		MOHP
200	Monitor Dairy and Monthly Inventory, Participate Guide		UNICEF
201	Monitoring Progress Toward the Goals of the World Summit for Children: A Practical Handbook for Multiple-Indicator Surveys	January, 1995	UNICEF
202	Monthly Statistical Bulletin	October, 1997	National Statistical Office
203	Mwanza District Health Plan, 1999-2004		DHP
204	National Control of Diarrhea Disease Programme, Five Year Implementation Plan 1995-1999		MOHP
205	National Control of Diarrhoeal Disease Programme 1985-1989		MOH
206	National Plan of Action for Nutrition 1996-2001, Draft	November, 1995	Food and Nutrition, Ministry of Agriculture and Livestock Development
207	National Policy for Control of Diarrhoeal Diseases Programme in Malawi		
208	National Policy, Acute Respiratory Infections (ARI) Control Programme in Malawi	1997	MOHP
209	National Quality Assurance Plan	1997	MOHP
210	Netherlands' support Programme to the Health Population and Nutrition Sector in Malawi, Volume Three-Health Management Information	May, 1997	Dr. R. P. Dubbeldam et al
211	Nkhata Bay District Health Plan 1999-2004, First Draft	February, 1999	GOM
212	Non-governmental Organisations in the Education Sector-A needs assessment	March, 1994	USAID
213	OPTIONS-Malawi Safe Motherhood Project, Development of Monitoring System	October, 1998	DFID
214	Order and Procure, Participant Guide		UNICEF
215	Evaluation, In-service training in Syndromic management of STDs, Malawi	July, 1997	STAFH
216	Outpatient Management of Young Children with ARI, Participant Manual 1992		WHO
217	Overview of Primary Health care Supported Villages in Malawi	August, 1997	H. R. D. Mbengo-Mbewe, MOHP
218	PHN Sector Credit 2220-MAI Progress Report, January to June 1998	July, 1998	MOHP
219	Plan The Survey, Section B		
220	Policy Analysis Initiative	May, 1999	Office of the Vice President
221	Policy Guidelines for IEC Functions at District/City Levels	July, 1998	MOHP
222	Population and Family Planning in Malawi, A Community Nexus Approach	December, 1997	GOM, WB
223	Population, Health and Nutrition Sector Projects (PHN), Civil Works	June, 1999	D.D. Chindyaonga RIBA, MOHP
224	Programme Plan of Operation for Water & Environmental Sanitation 1997-2001	May, 1996	MOH, UNICEF

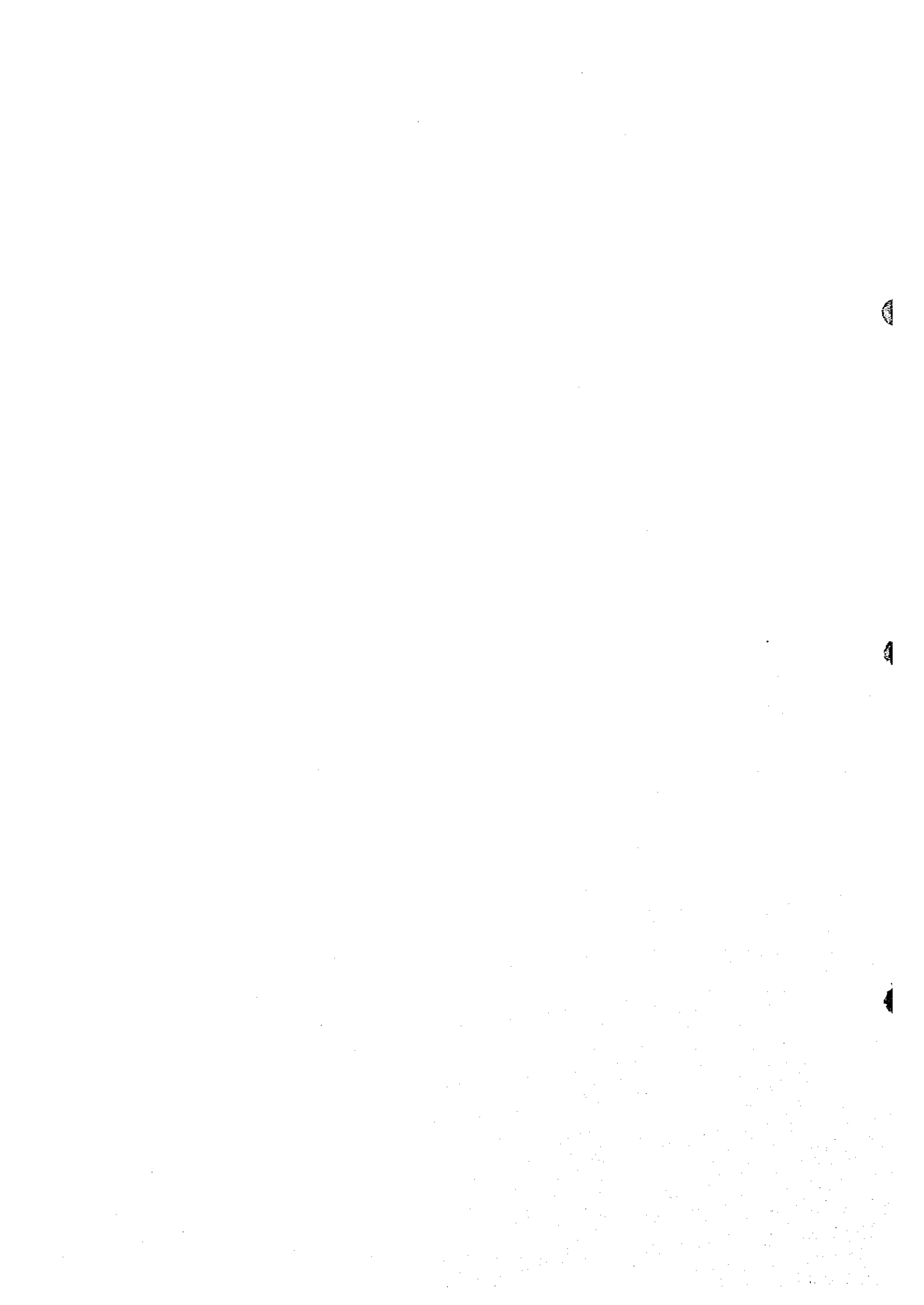
## List of References in Health Sector in Malawi

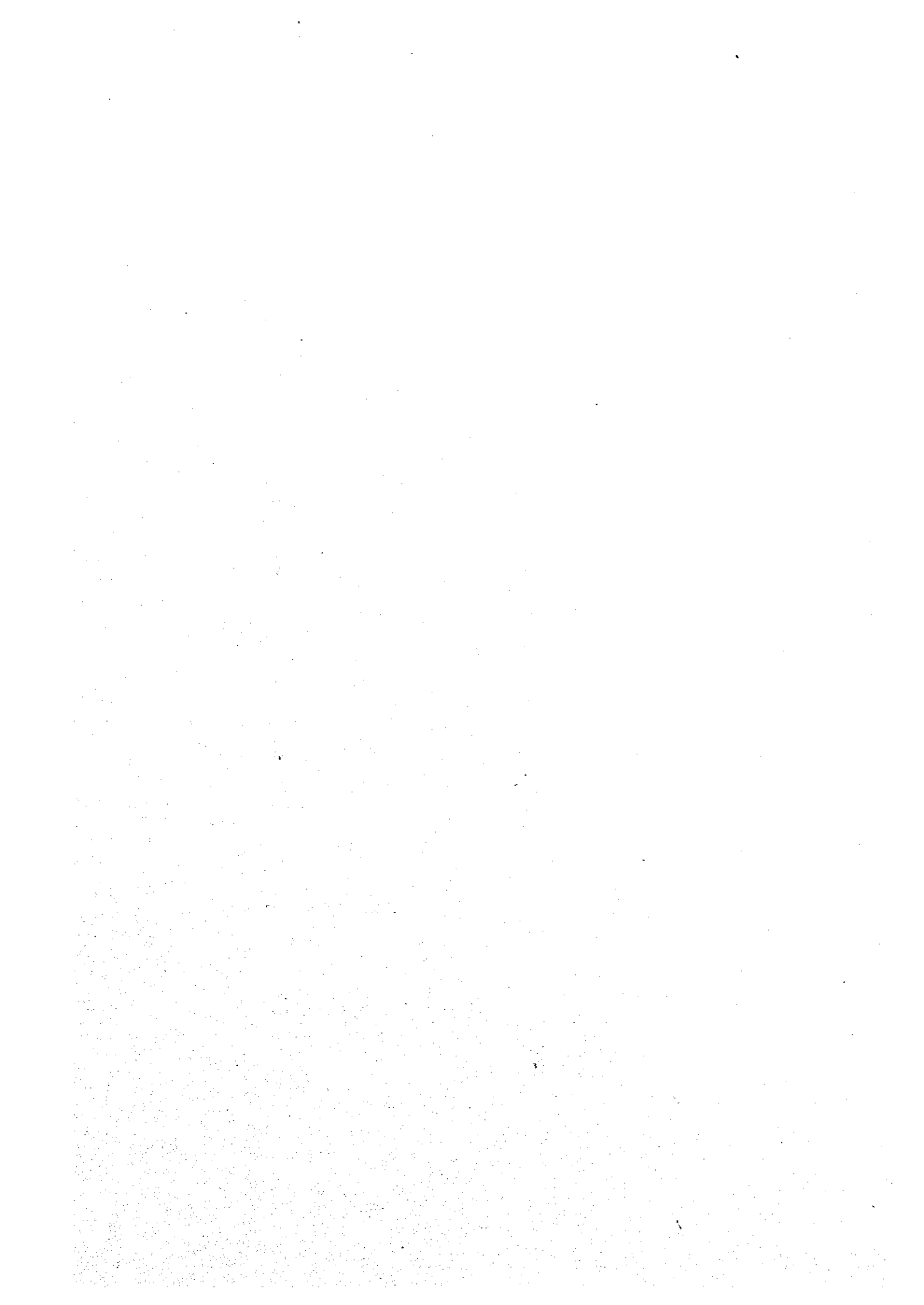
No.	Title/Sub Title	Date	Organisation
225	Quality of Family Planning Community-Based Distribution Services in Malawi	December, 1996	STAFH
226	Rapid Assessment of the Health Care System and Service Delivery in Lilongwe District.	November, 1997	H. M. J. B. S. Shawa, A. Phaya et al
227	Receive and Inspect, Participant Guide		UNICEF
228	Malawi Health Sector Strategic Plan, Rationalisation, Equity and Quality in Health	August, 1997	MOHP
229	Report of the Study on Fleet Management, Chikwawa District Hospital	February, 1999	Management Training Bureau
230	Revised Strategic Health Plan.	July, 1998	MOHP.
231	Safe Motherhood in Monkey Bay, A Community Approach	November, 1998	Peyter Cuppen, Tim Cullinan, Malawi College of Medicine
232	Safe Motherhood Project, Participatory Needs Assessment Results, Blantyre District	November, 1998	
233	Agriculture Production Estimates, 1997/98 Season, Third Round Agriculture Production Estimates	June, 1998	Salima ADD
234	St. John's Hospital-Annual Report 1997		Medical Missionaries of Mary, St. John's Hospital
235	AID Mobilisation Document, Details of Prioritising Projects	March, 1996	MOEP&D
236	National Water development Project, An Overview of the Findings of the Water Sector Study, A Paper Presented at NWDLP Launch Workshop 16-18 Sept, 1996	September, 1996	
237	Store Supply and Establish Inventory Procedure, Participant Guide		UNICEF
238	Strategic Health Plan, Draft		MOHP
239	Strengthening of the IEC and Social Mobilisation Unit of the Ministry of Health	June, 1990	MOH
240	Strengthening Reproductive Health Management in Malawi	April, 1998	Dr. Tony Klouda, Justin Nyondo, Management Strengthening Task Force
241	Supervisory Skills. Management of the Young Child with an Acute Respiratory Infection	1990	WHO
242	Survey Trainers Guide	December, 1994	The John's Hopekins University
243	Terms of Reference, Health Study, Republic of Malawi	1998	AfDB
244	The Current Numbers of Health Surveillance Assistant in Malawi.	September, 1997	H. R. D. C. Mbengo-Mbewe, MOHP
245	Field Manual for HSAs in Malawi	February, 1998	MOHP
246	The State of Food Security and Nutrition of Smallholders in Malawi	December, 1997	MOHP
247	The Strategic Role of the Health Sector Towards the Employment of Nutritional Status of Malawian Nation by the Year 2003	June, 1998	Henry Mdebwe
248	Guidelines for the Supervision of Health Surveillance Assistants in Malawi, Draft	April, 1996	MOH
249	To the Year 2020: A Vision for the Health Sector in Malawi	October, 1998	MOHP
250	Health Surveillance Assistants Programme, Training Curriculum for HSA Supervisor	April, 1996	MOH
251	Tuberculosis Control in Malawi District Operational Research 1997	1997	MOHP
252	Understanding Organization		C. B. Handy, Penguin Business
253	Urbanization Sanitation and Environment Health		Robens Institute, Guy Howard, Commonwealth
254	Vitamin A Deficiency in Malawi. Salima/Dedza East Prevalence Survey September 1988	1989	A. Escoute, M. C. Chirambo et al, MOH
255	Zomba District Health Services Plan 1999-2004, Draft		MOHP
256	Monthly Statistical Bulletin	April, 1998	National Statistical Office
257	Mzimba District Health Plan		The District Health Plan
258	Malawi National health Plan 1999-2004, Draft		MOHP
259	Safe Motherhood Project, Participatory Needs Assessment Results, Summary Document for Blantyre and Nsanje Districts, 1998		Safe Motherhood Project
260	Basic Health Statistics 1992	August, 1996	CHSU, MOHP
261	PHN Sector Credit 2220-MAI Progress Report January to June 1999	June, 1999	MOHP
262	ECONOMIC REPORT 1996		MOEP&D
263	Institutional Assessment for School Health and Nutrition in Malawi, Prepared by the Ministry of Education	July, 1998	WB
264	Institutional Framework and Policy for School Health and Nutrition (Draft only-13 July, 1998)		John Bullitt, WFP
265	WFP Malawi Activity Report First Quarter Report 1998 January-March 1998		WFP

## List of References in Health Sector in Malawi

No.	Title/Sub Title	Date	Organisation
266	Report on the School Health and Nutrition Workshop Held at the MIM Lilongwe 21-23 July 1998	August, 1998	Ministry of Education
267	The State of the World's Children 1999 Education		UNICEF
268	Proposed outline of a National Health Plan or Taxonomy of Services		
269	District Profile		
270	Malawi Health Sector Strategic Plan, Background Report, Health Finance Working Group	August, 1997	MOHP
271	Brief on the Local Governance and Development Management Programme		
272	Schedule of Established Offices with Effect from 1st April, 1997		
273	Speech by the Secretary for Health and Population	1998	
274	Proposed Government of Malawi-UNICEF Country Programme 1997-2001 (Main Report)	May, 1996	UNICEF
275	Proposed Government of Malawi-UNICEF Country Programme 1997-2001, Donor & UNICEF Review & Discussion Meeting	May, 1996	UNICEF
276	Catalogue of Publications	April, 1986	GOM
277	Report of the Inter Village Visit to Chisakasa Nyirenda Village in Mzimba District		WHO
278	CIHI Country Health Profiles Series MALAWI Country Health Profile 1995		Centre for International Health Information
279	Summary of the Findings during the Monitoring of Community based Activities Conducted in the Twenty Four Districts		WHO
280	Local Governance and Development Management Programme, MLW971C0L		GOM, UNDP, UNCapital Development Fund
281	Malawi College of Sciences Upgrading Medical Assistants to Clinical Officer Course Curriculum Diploma in Clinical Medicine	Revised 1997	
282	Pathways and Partnership in Child Health		BASICS
283	1998 National Measles Campaign, Plan of Action, EPI UNIT	December, 1997	Malawi EPI
284	Pathways and Partnerships, BASICS Contributions to Child Survival		BASICS
285	HSA Curriculum, Eight Weeks Course		MOHP
286	Guidelines for the Supervision of Health Surveillance Assistants in Malawi	April, 1996	MOH
287	District Health Office Management Audit, Final Report	August, 1998	USAID







JICA