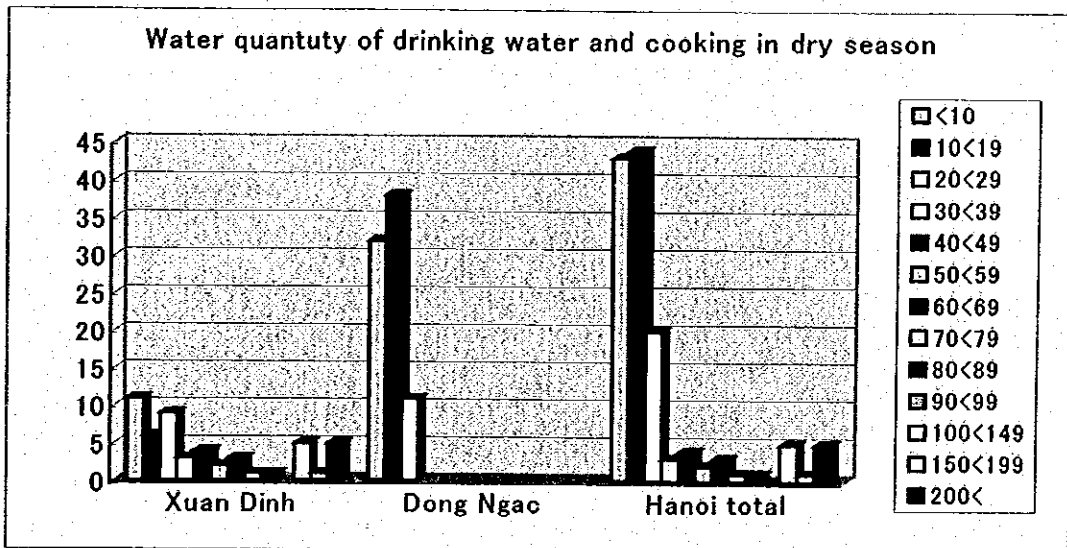
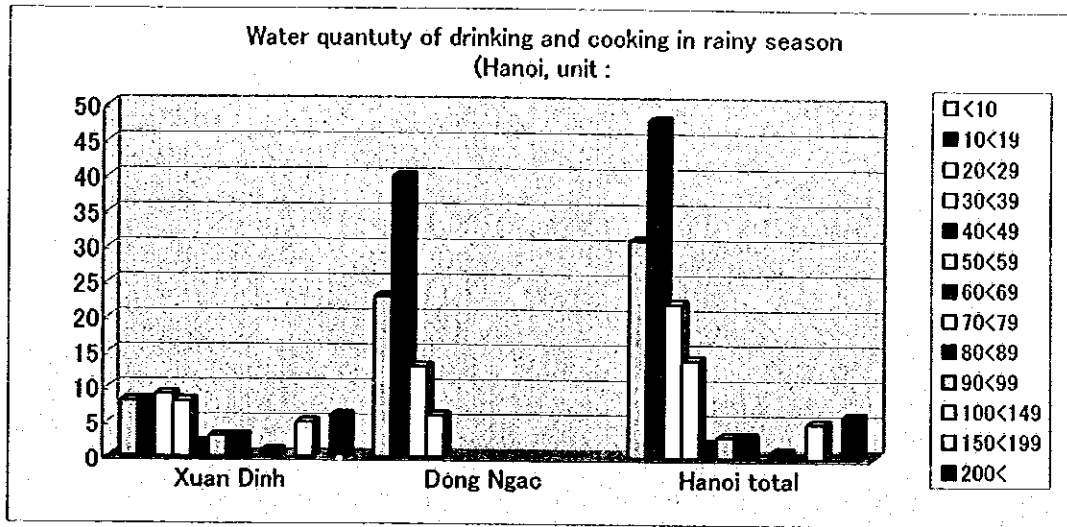
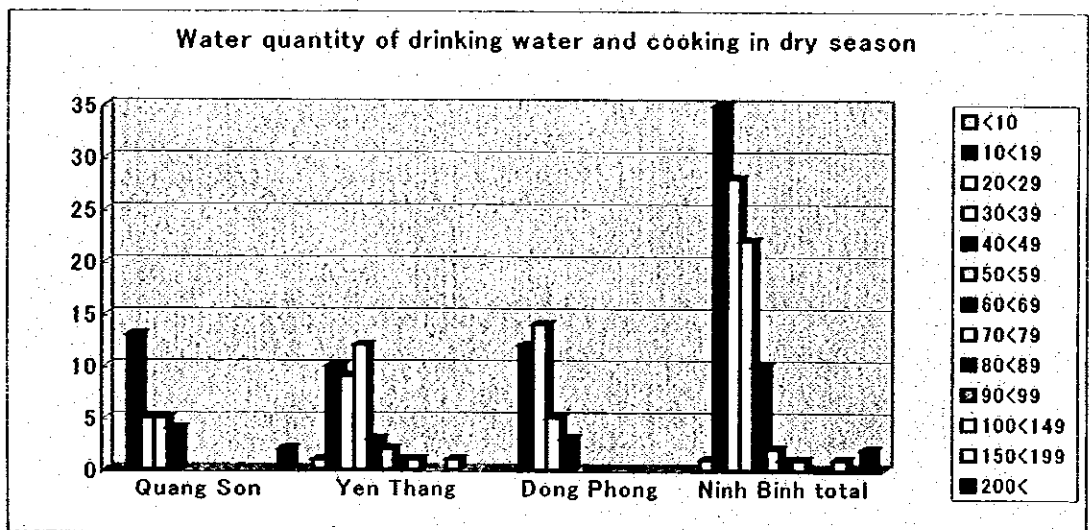
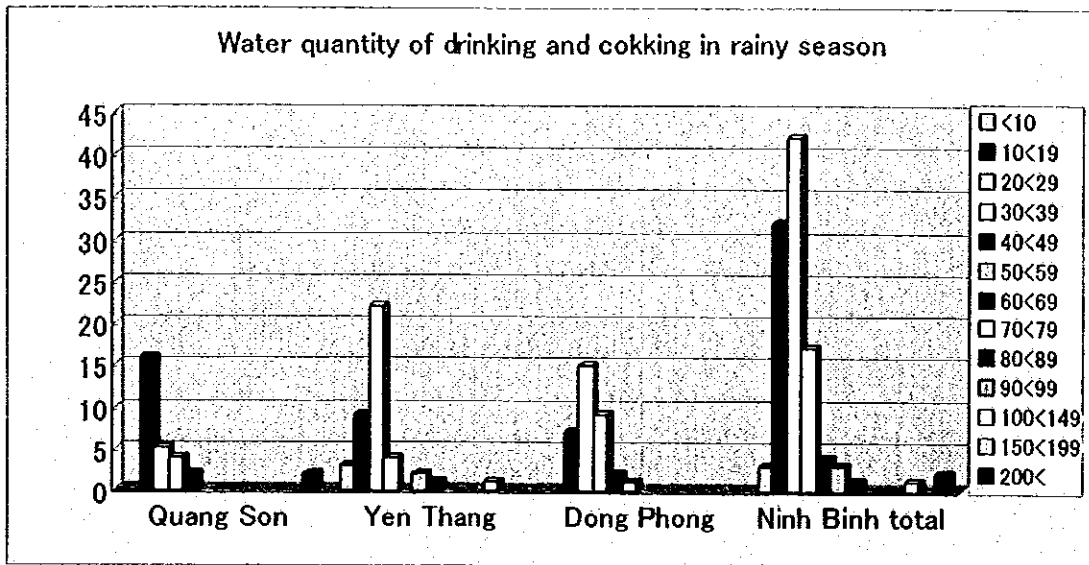
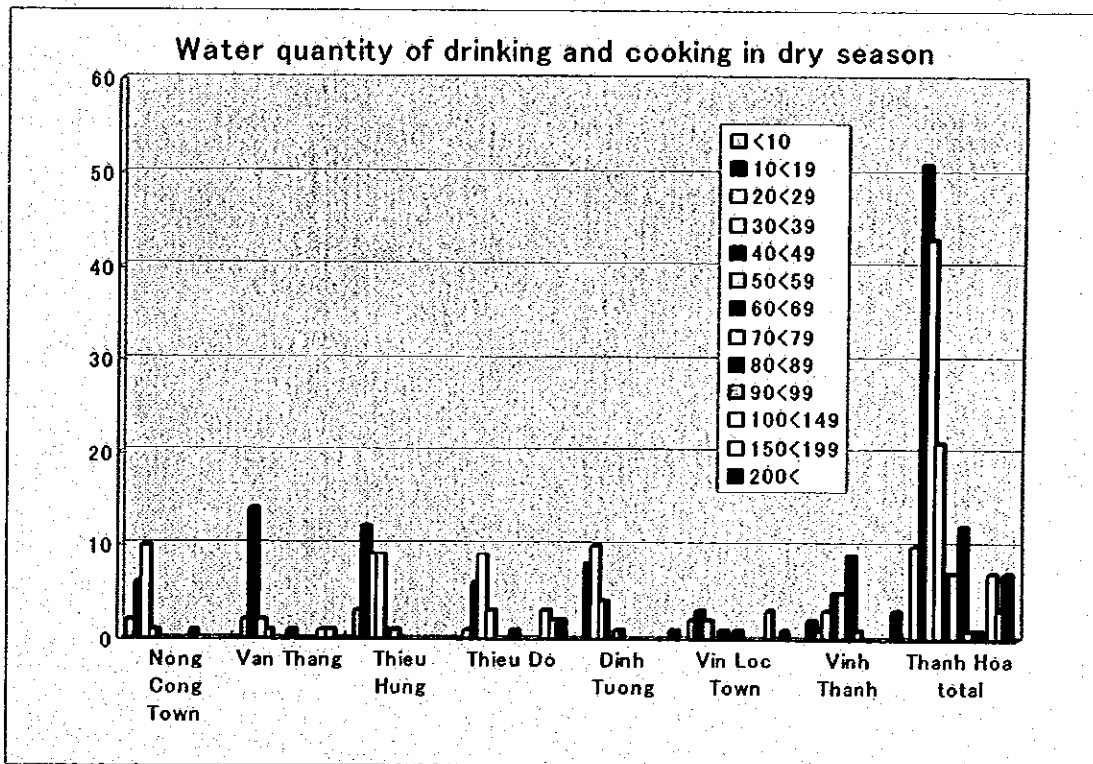
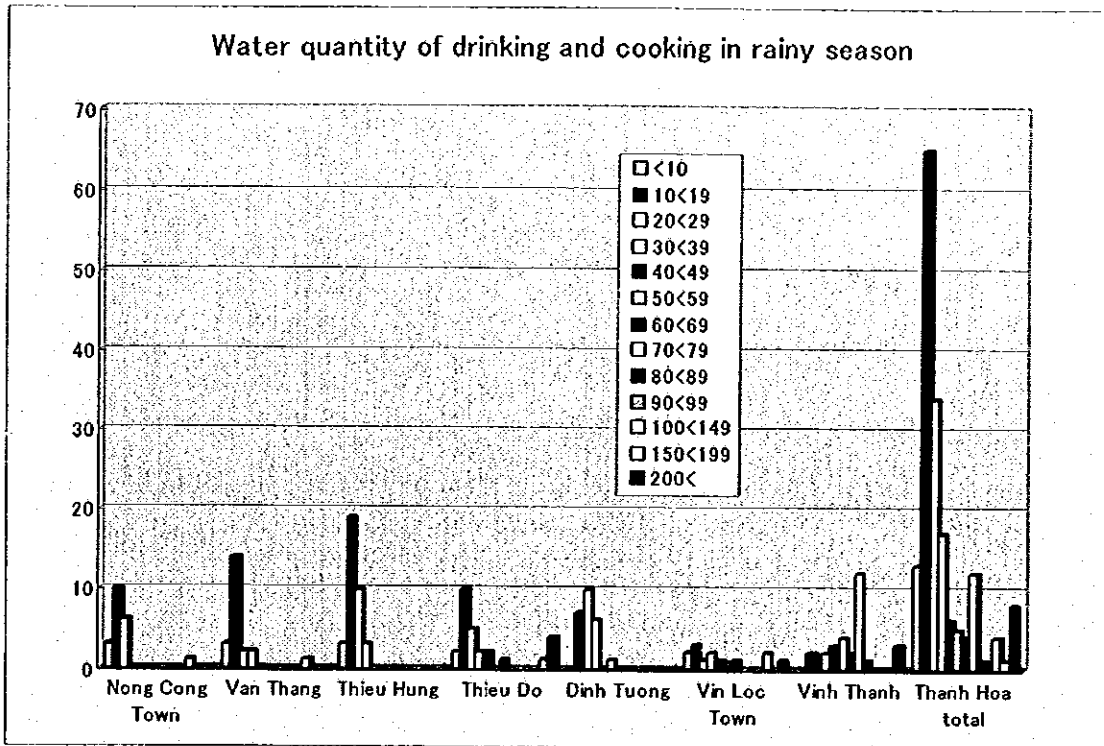
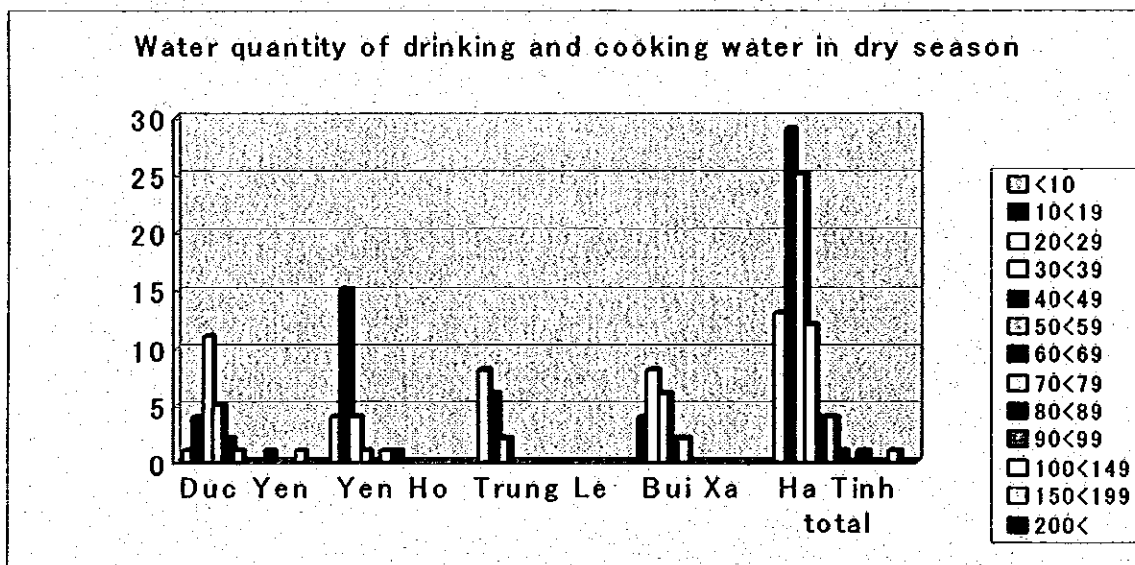
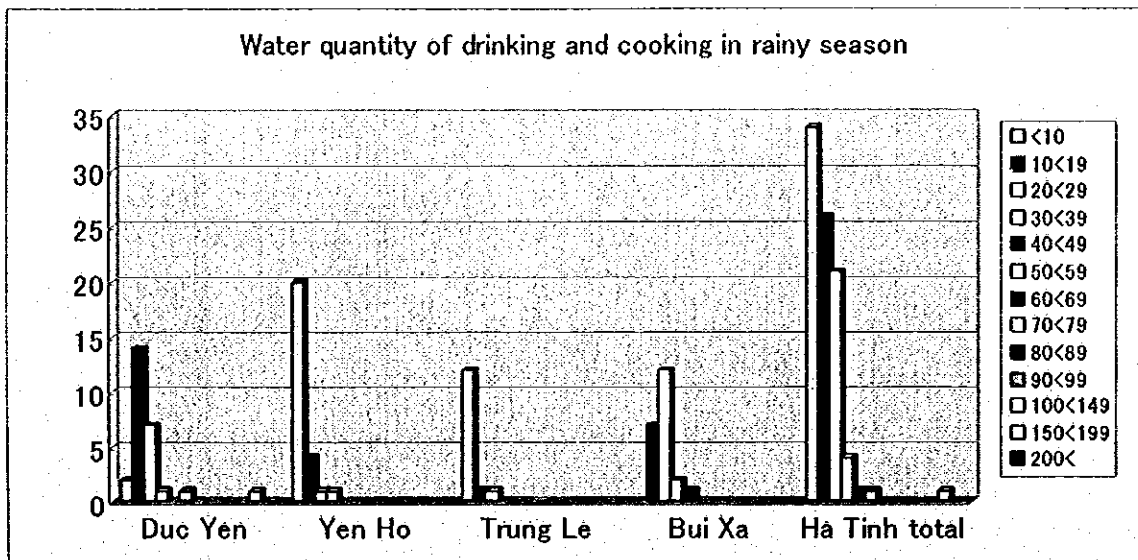


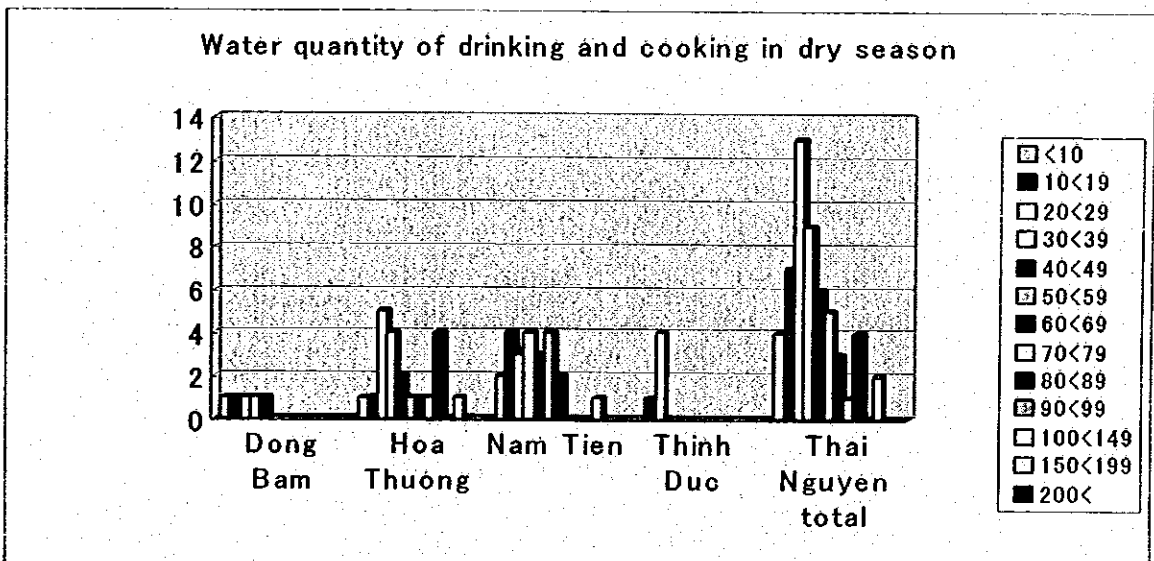
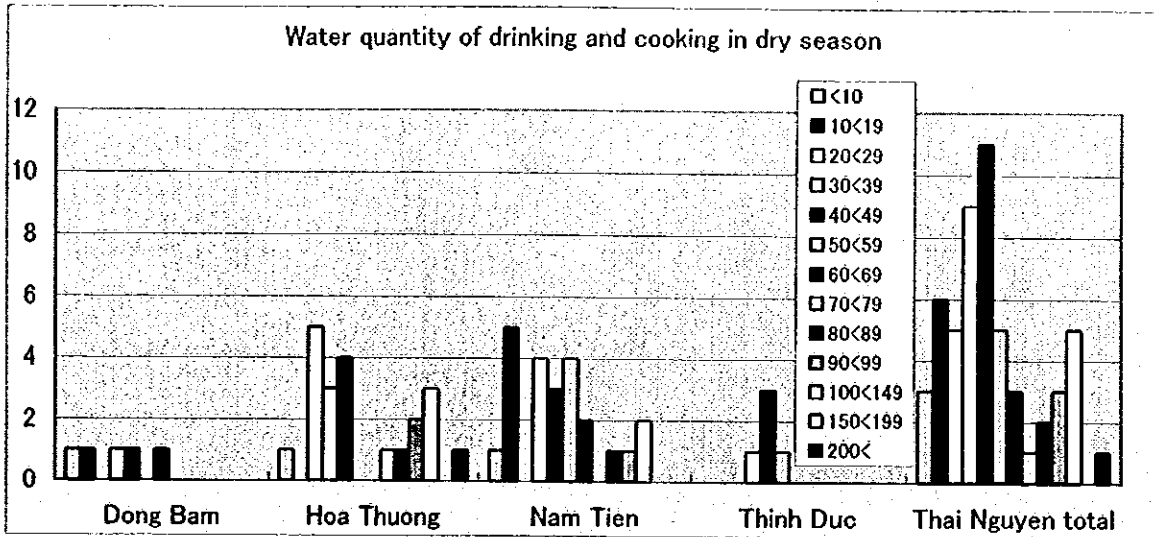
(19) Water quantity of drinking and cooking in each commune

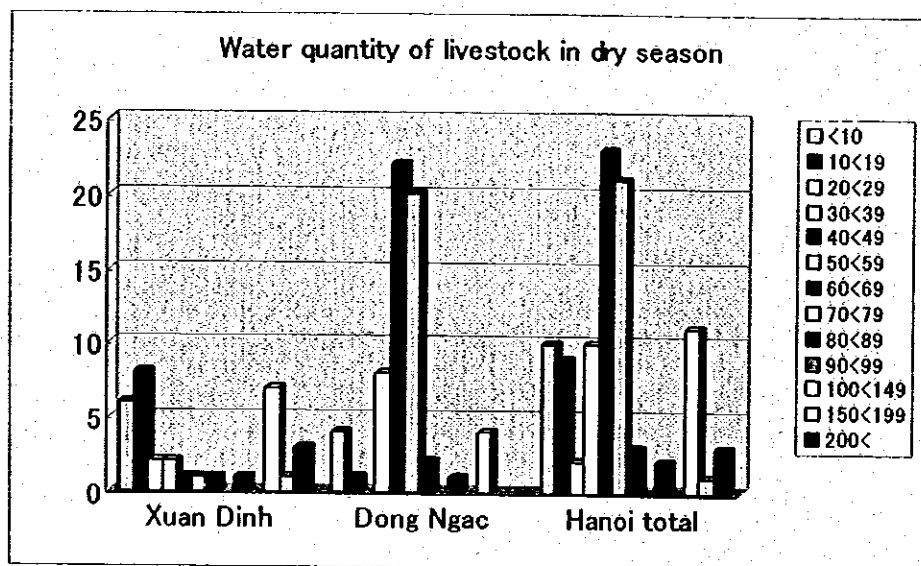
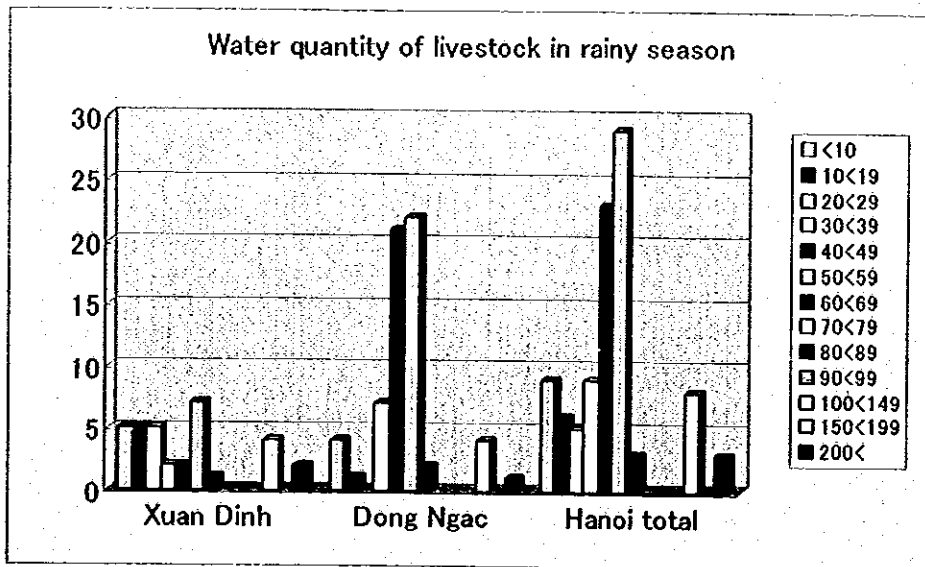


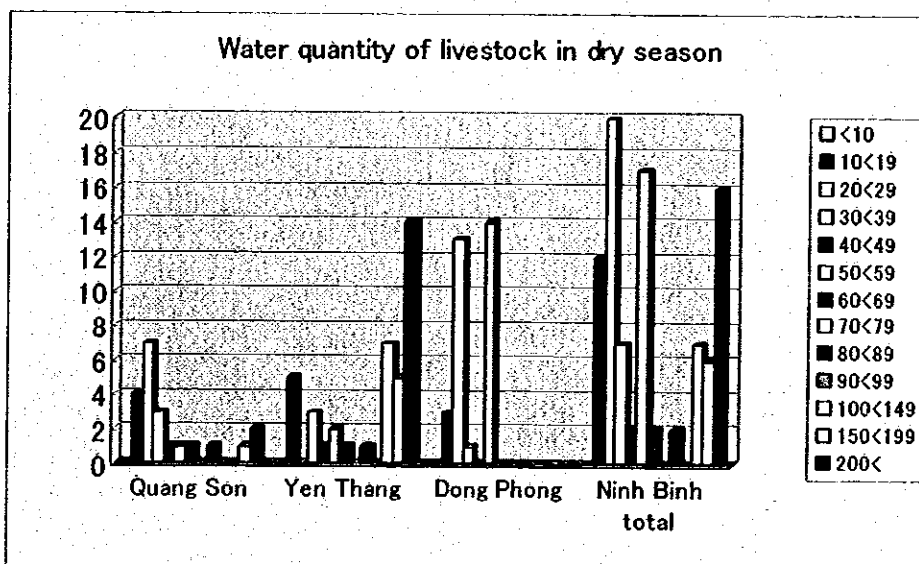
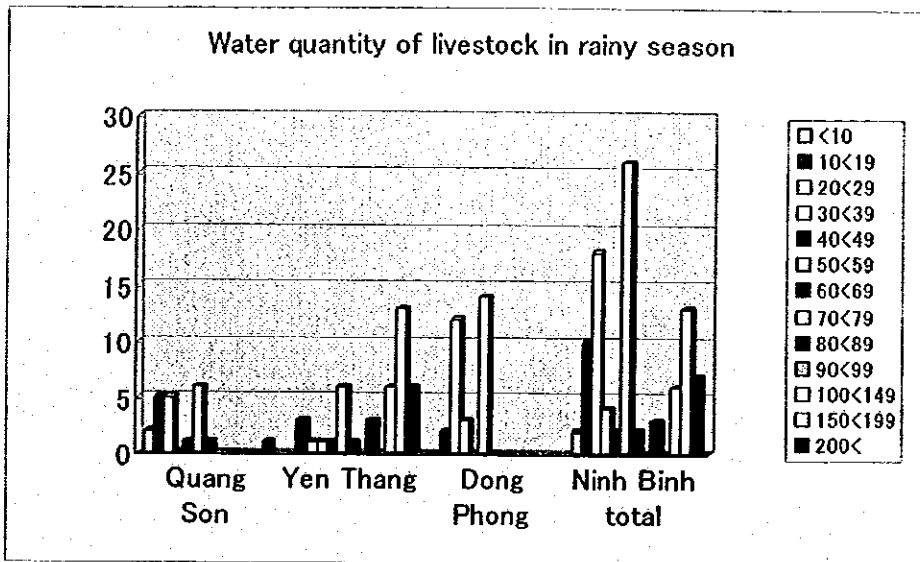


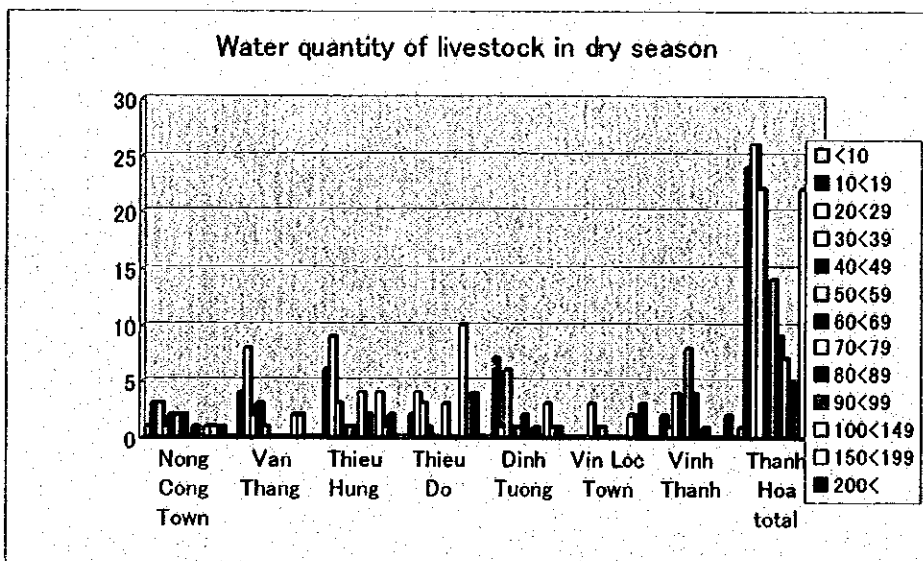
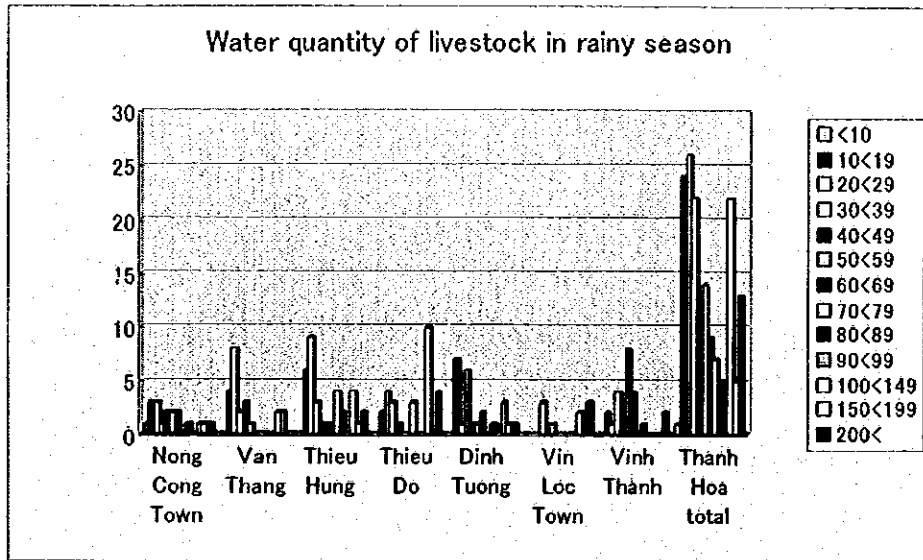


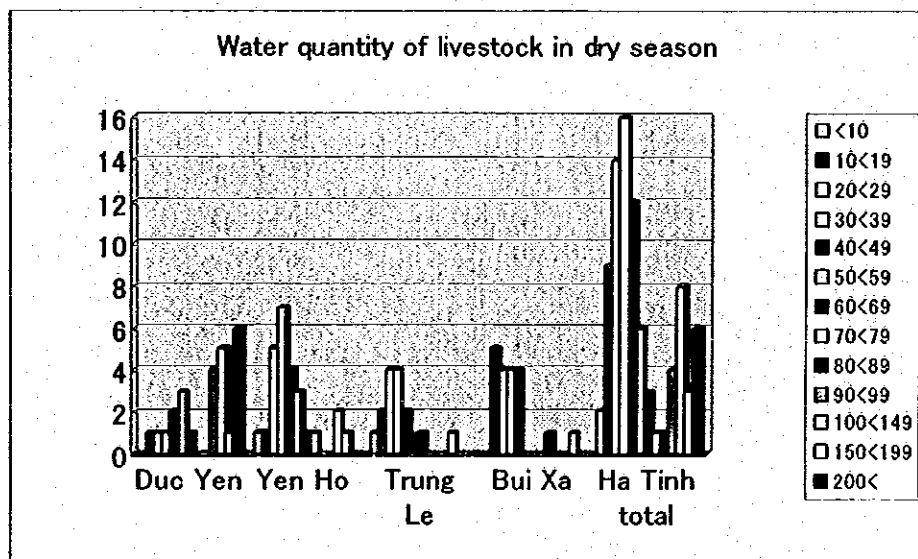
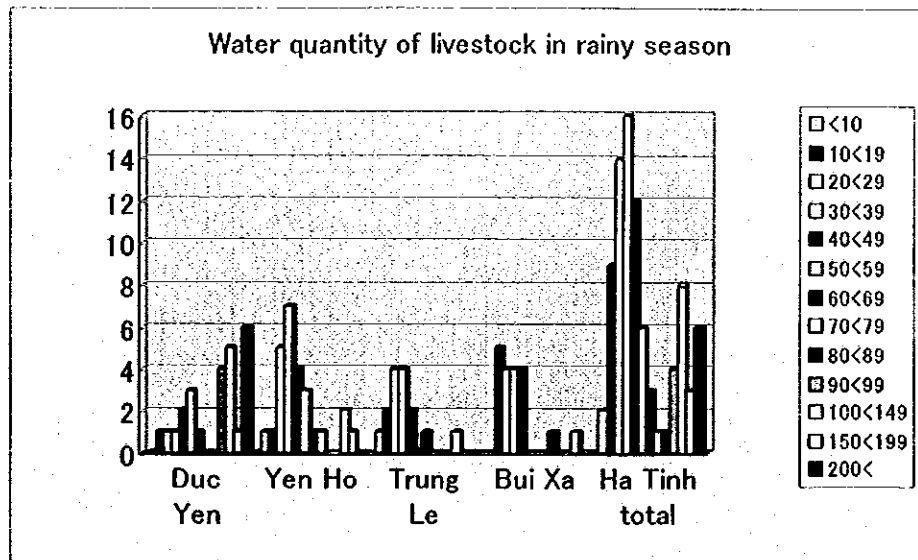


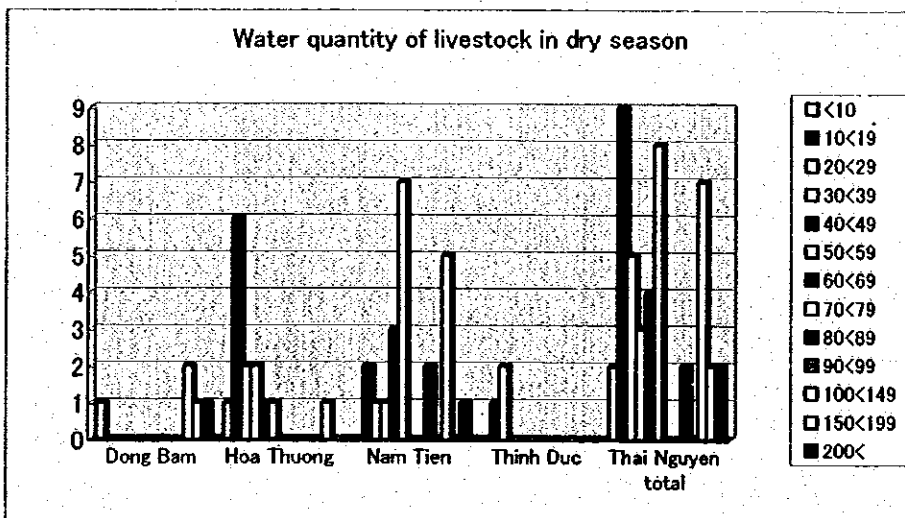
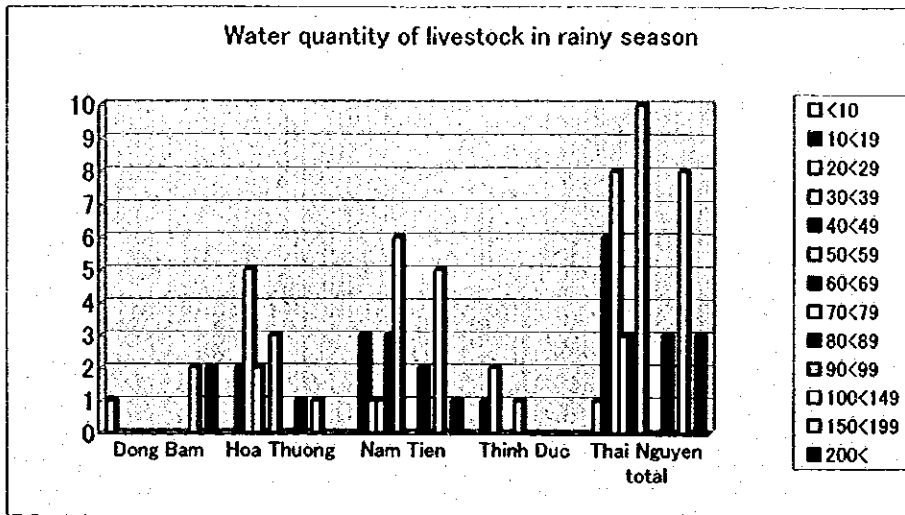


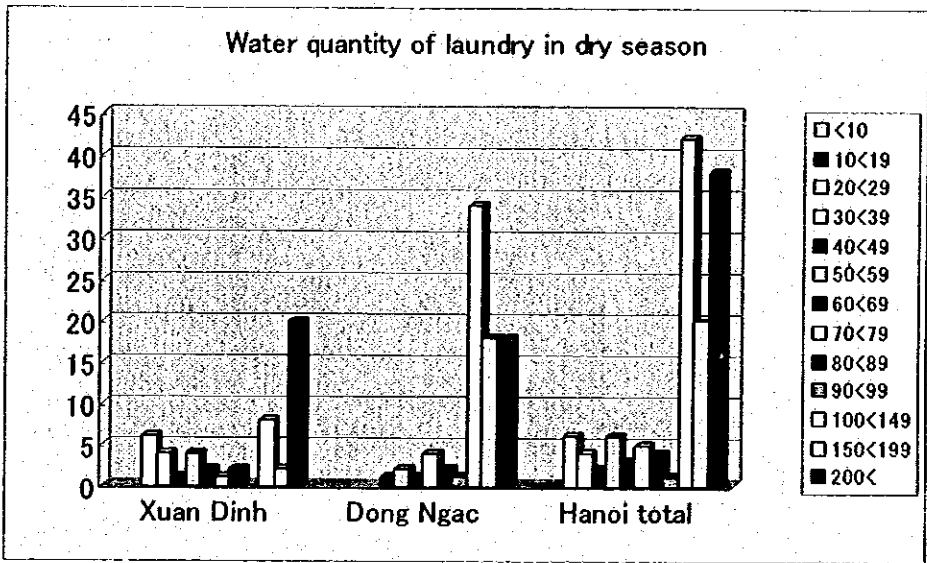
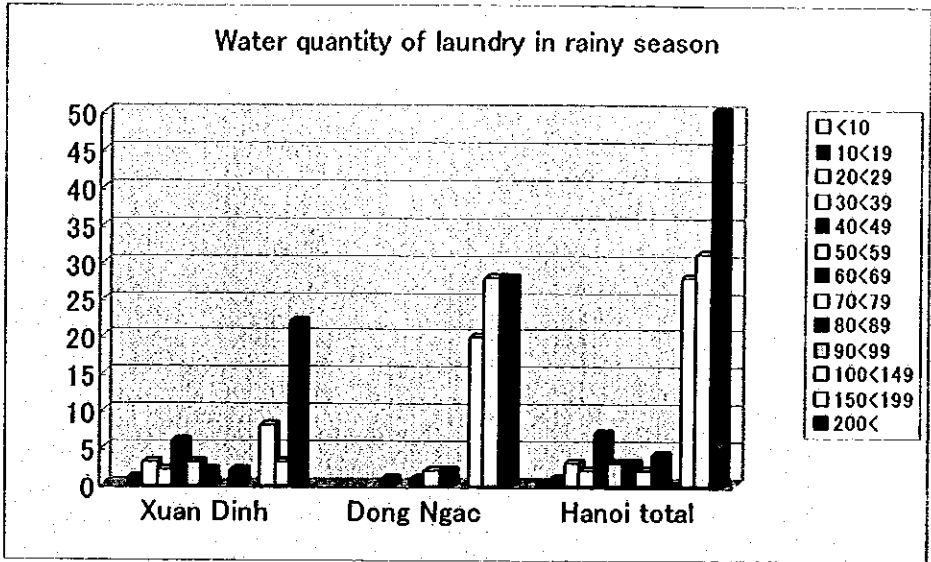


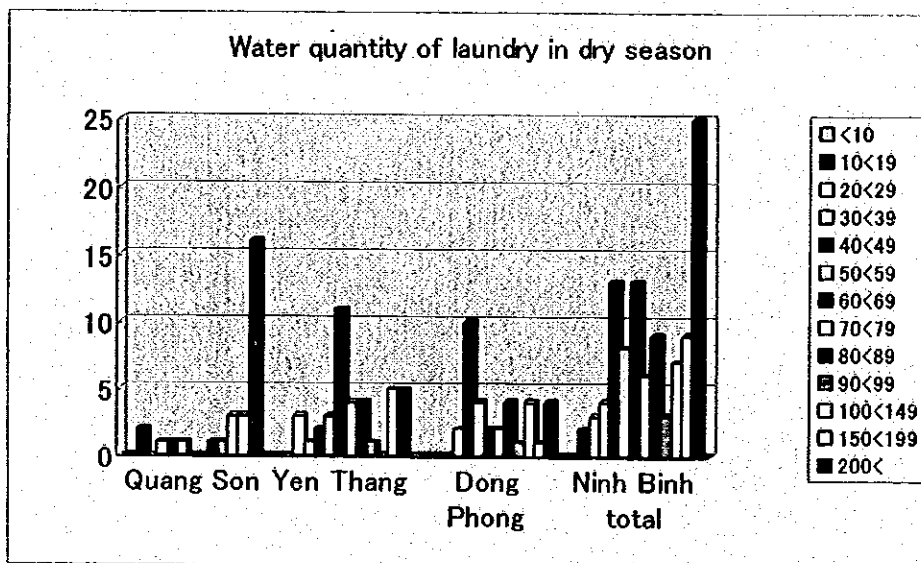
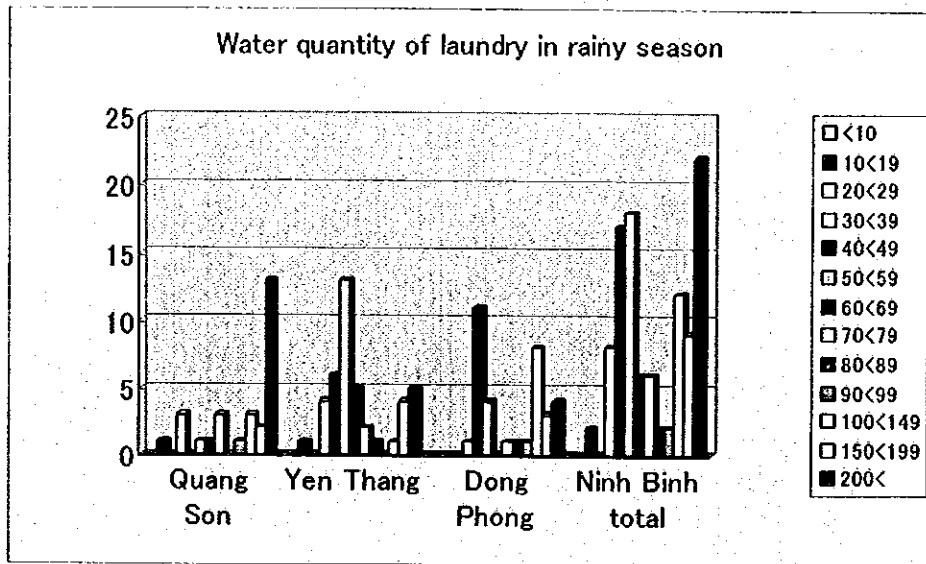


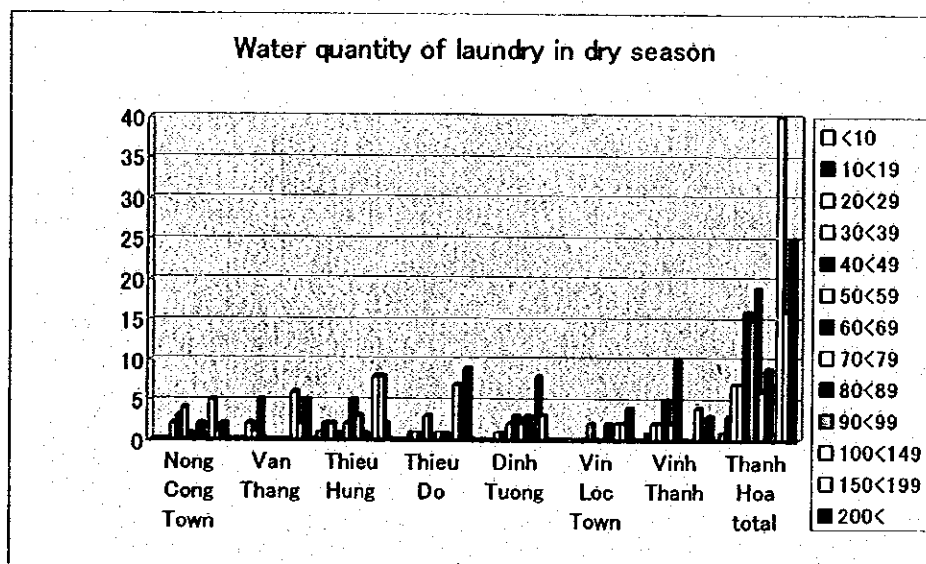
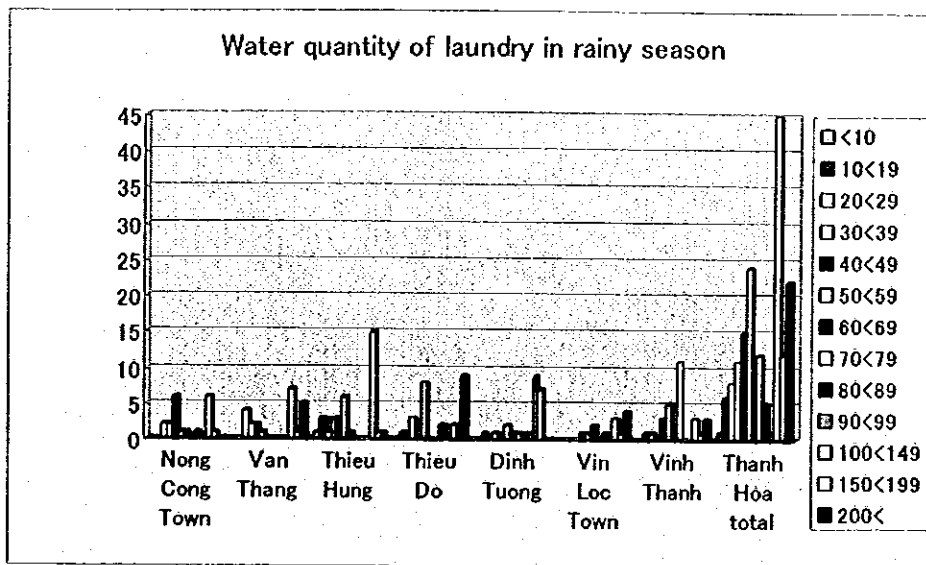


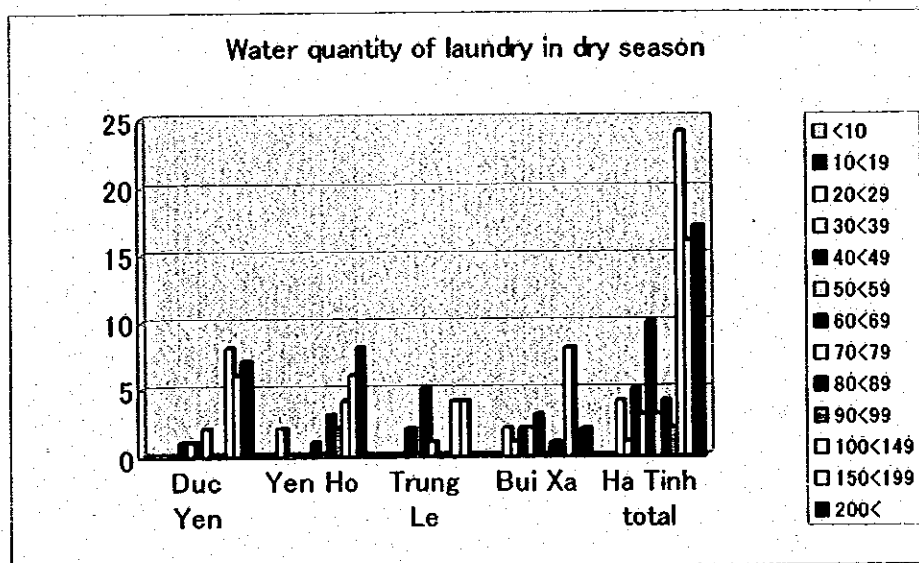
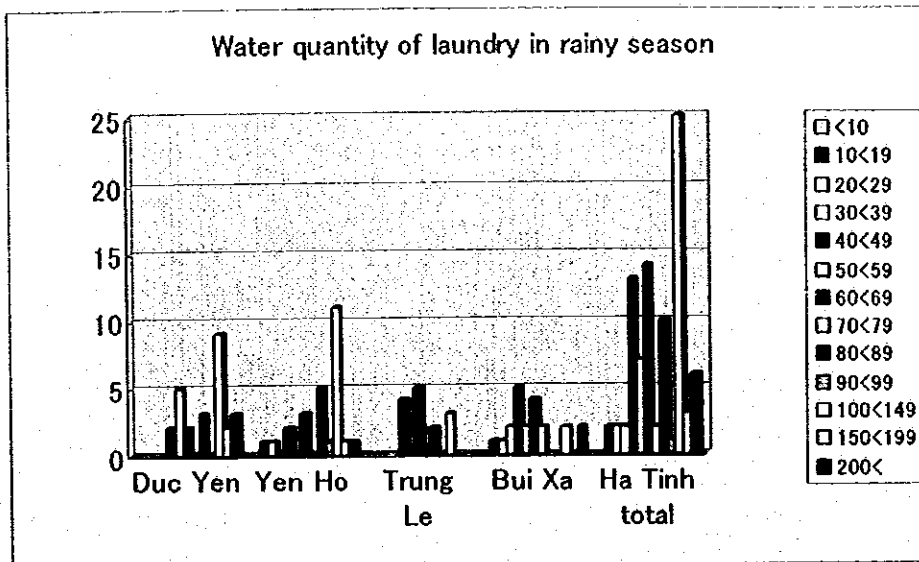


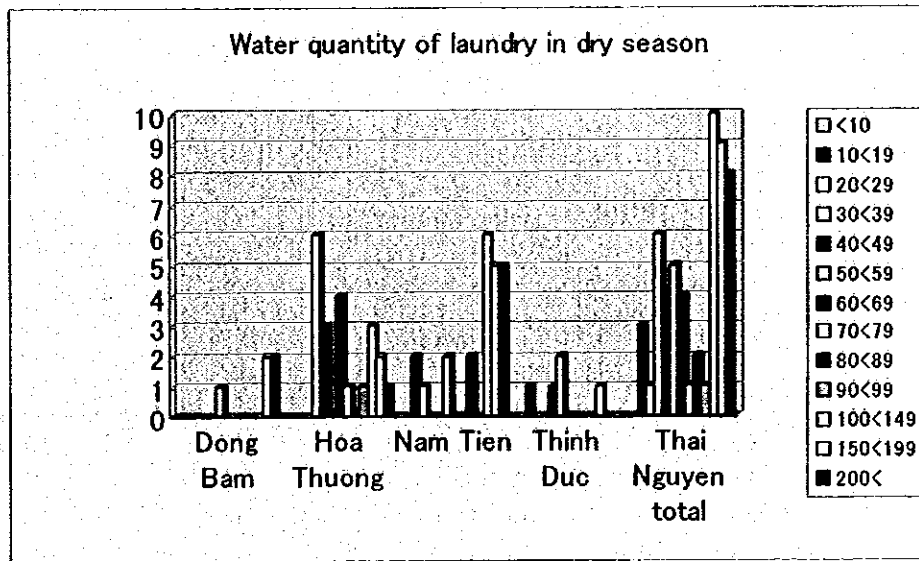
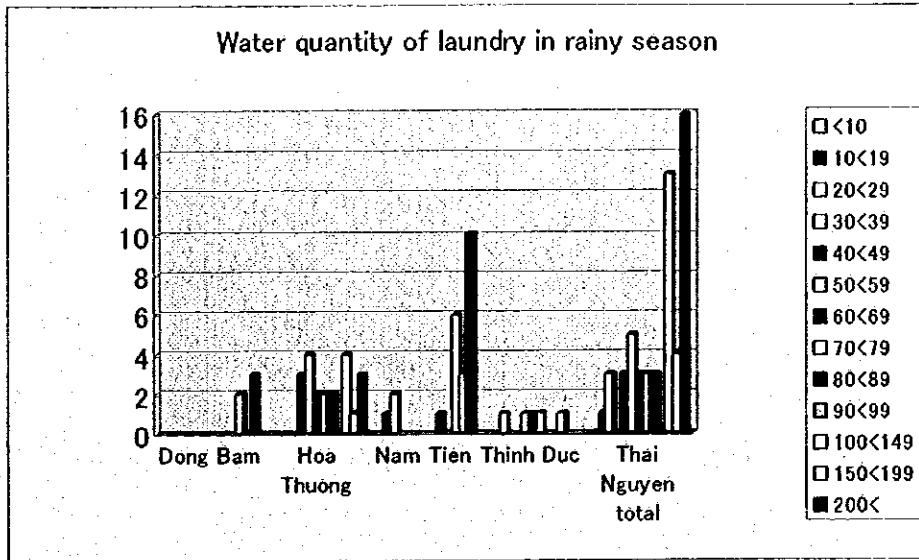


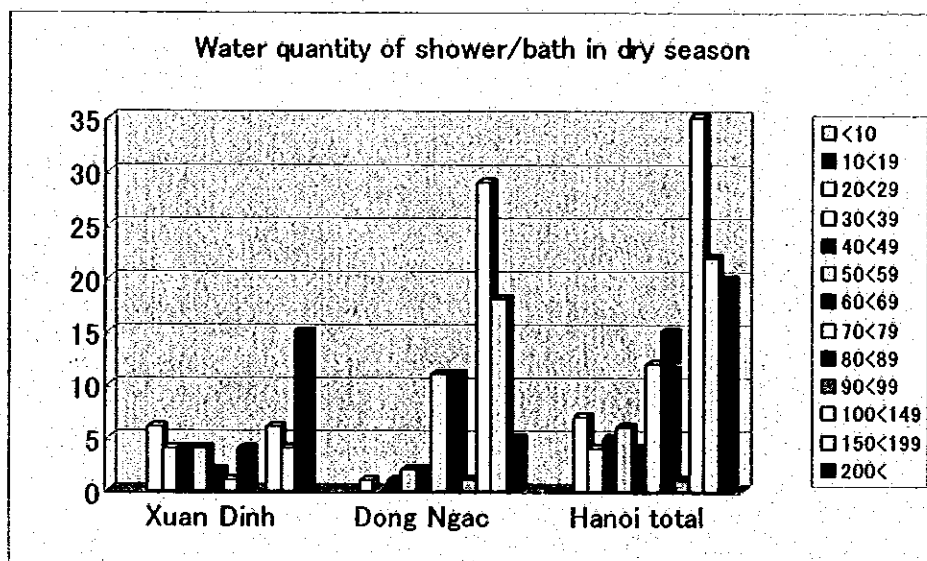
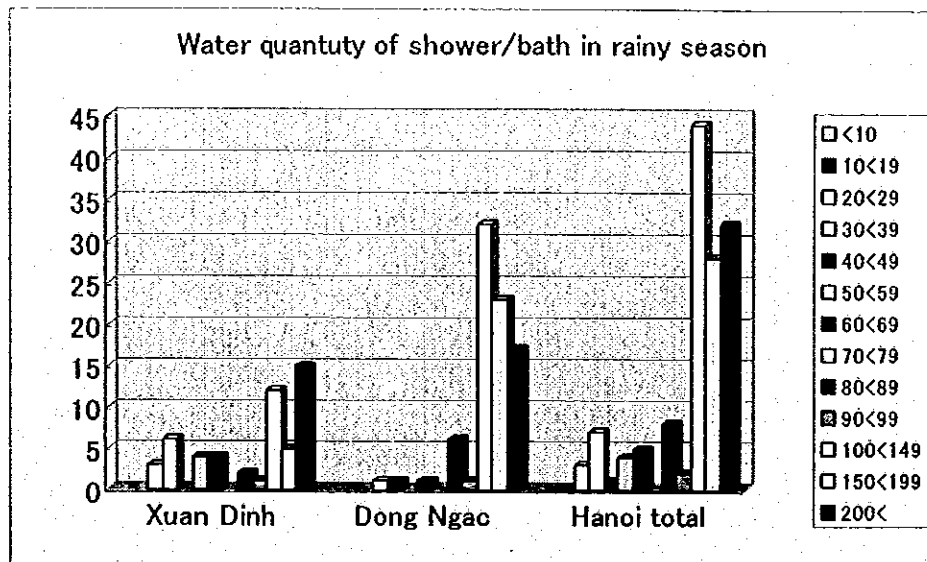


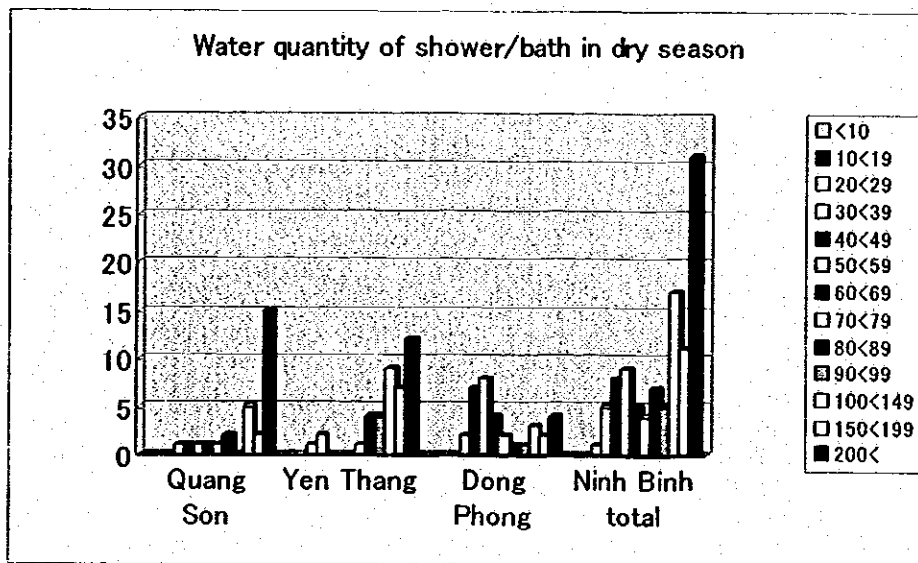
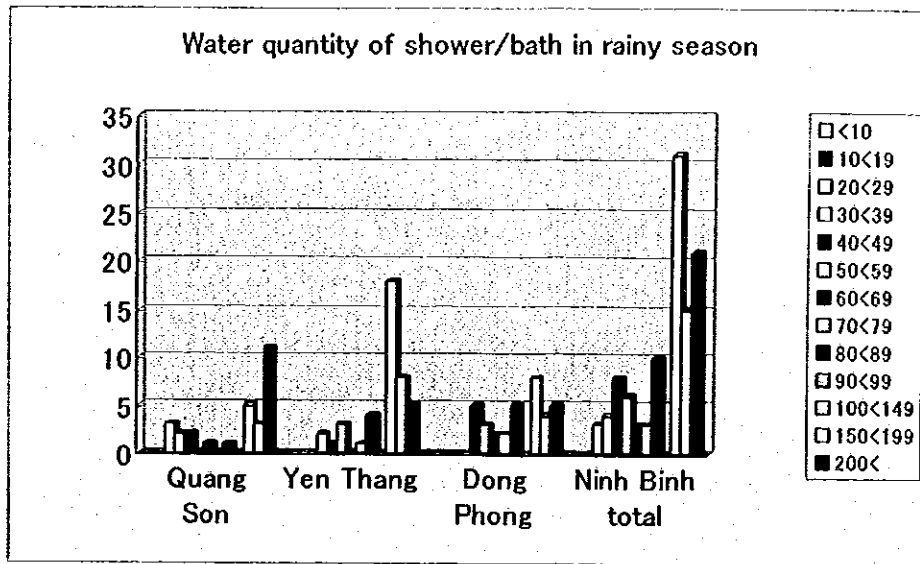


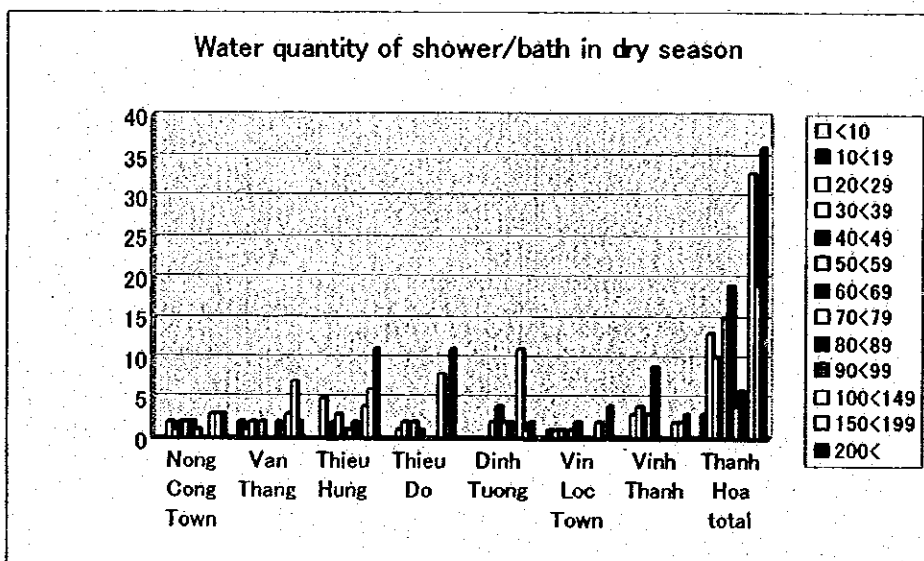
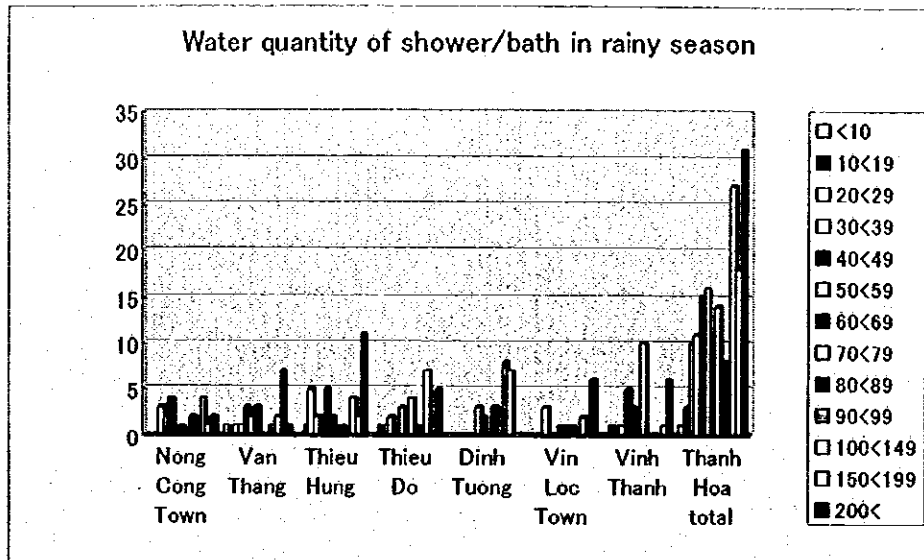


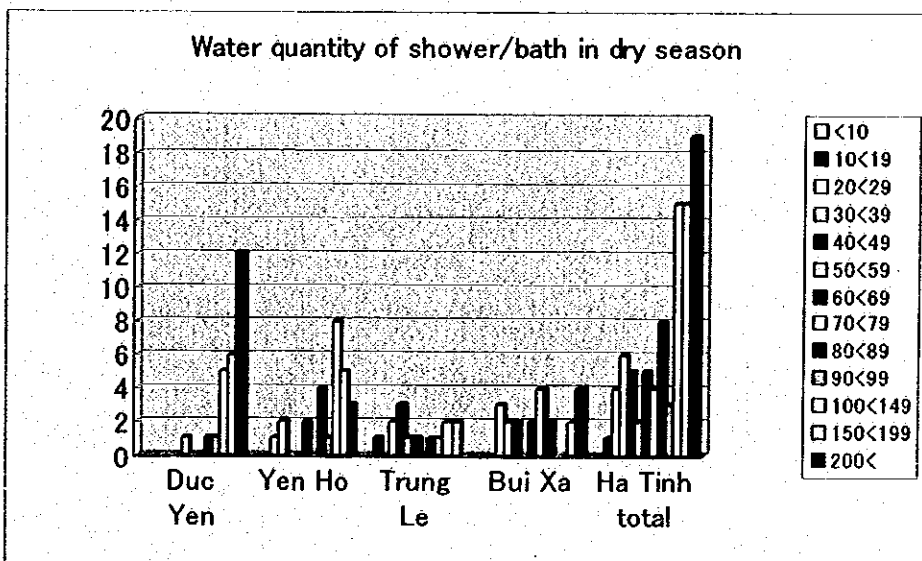
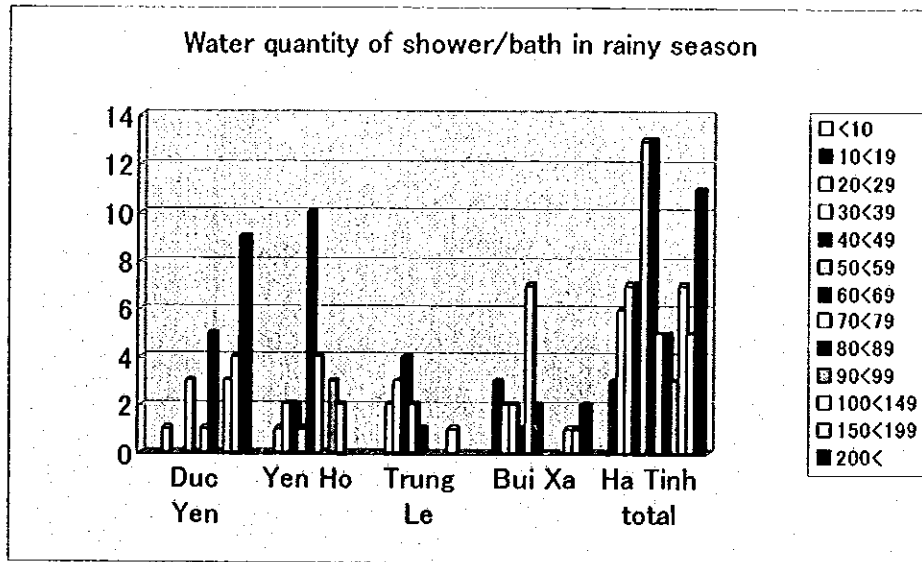


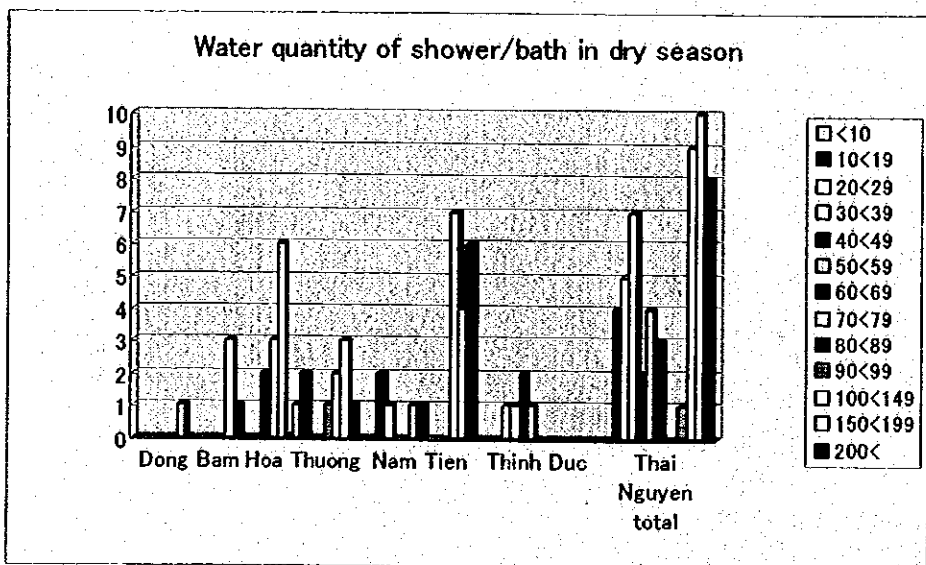
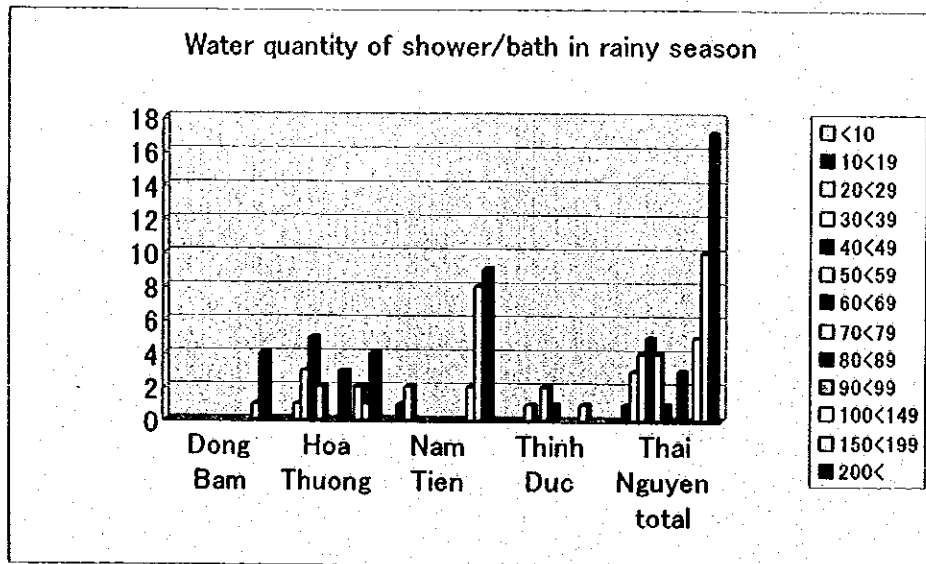


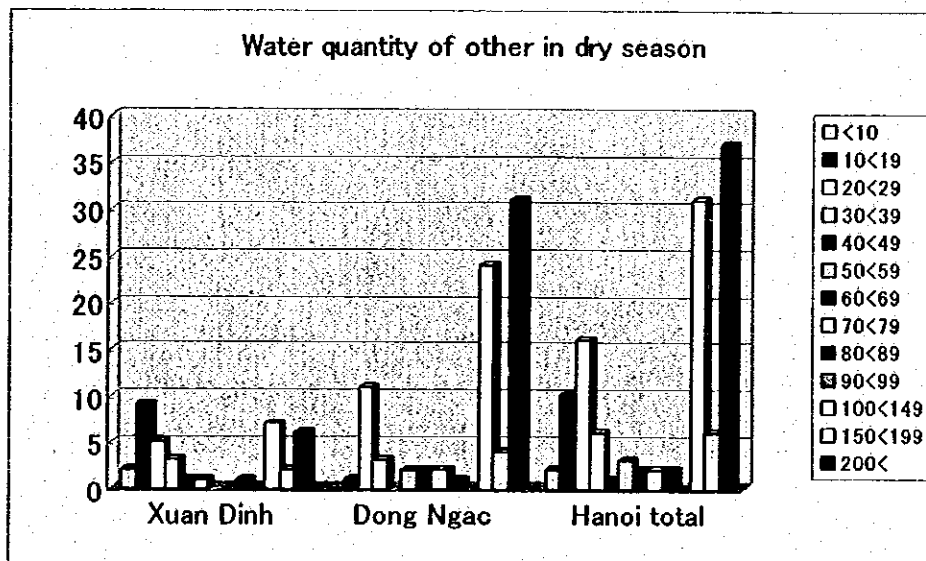
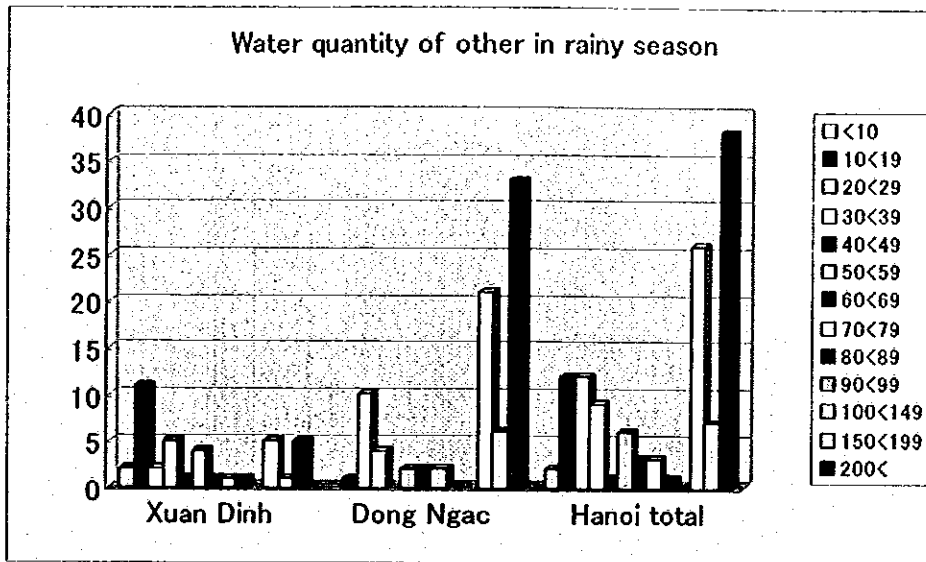


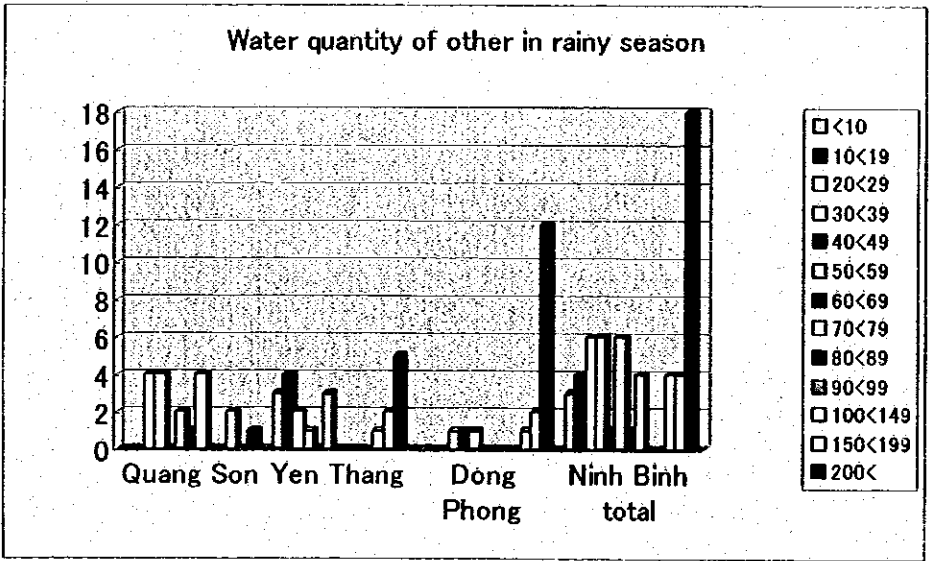
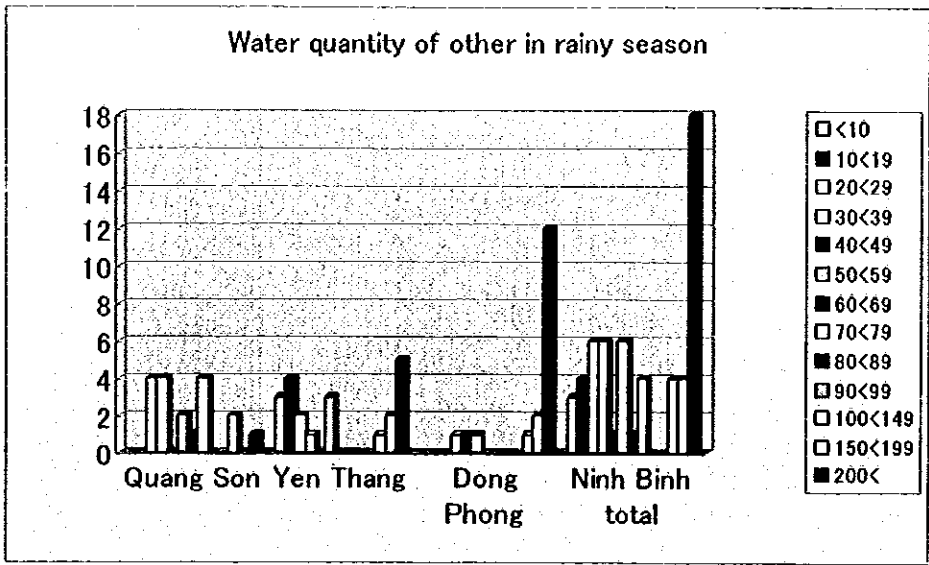


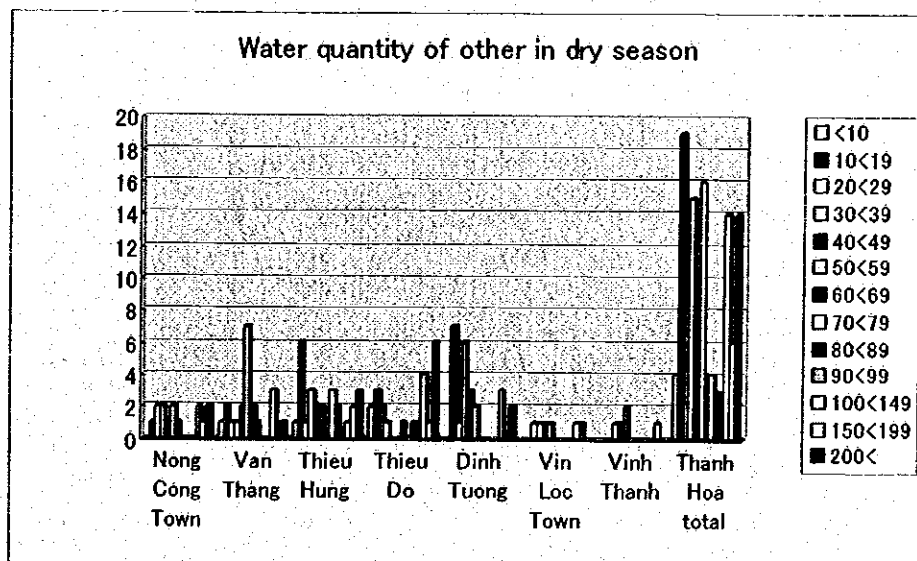
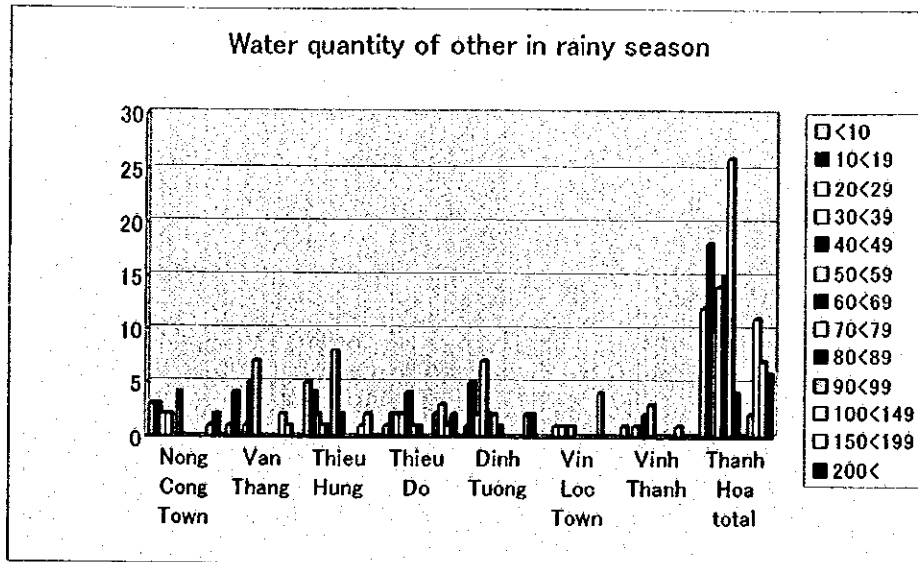


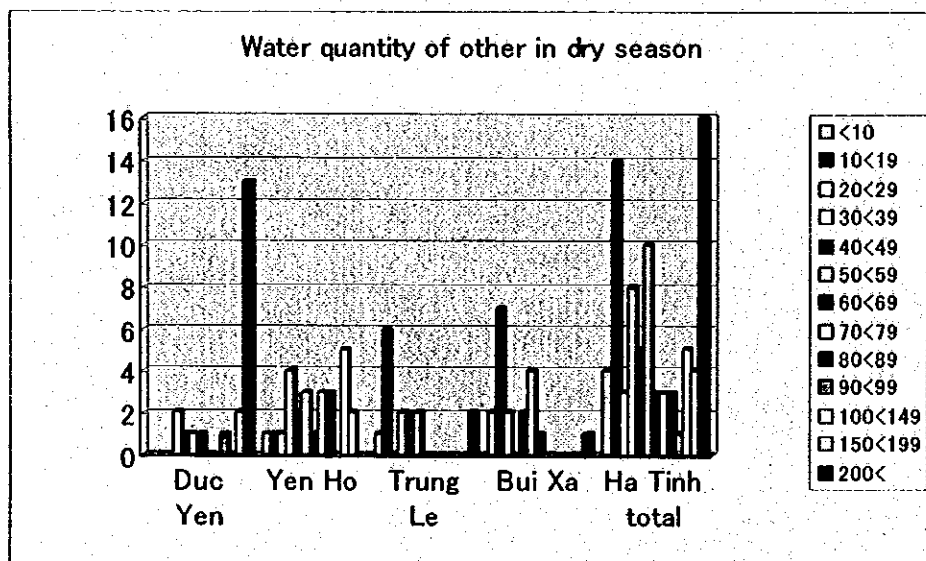
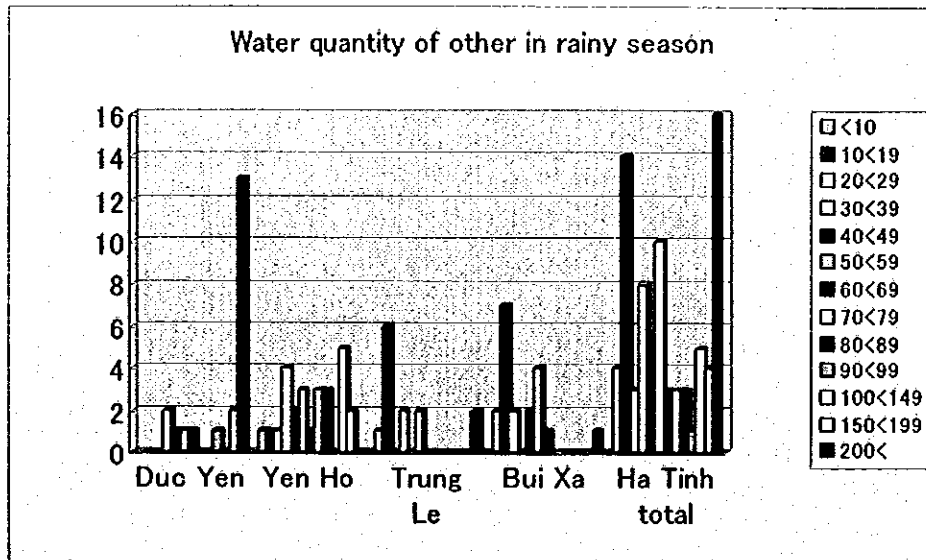


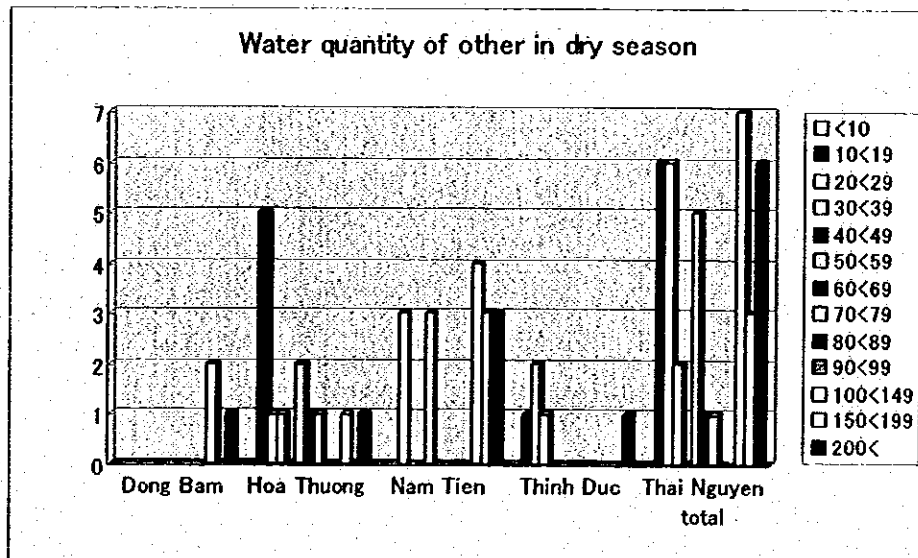
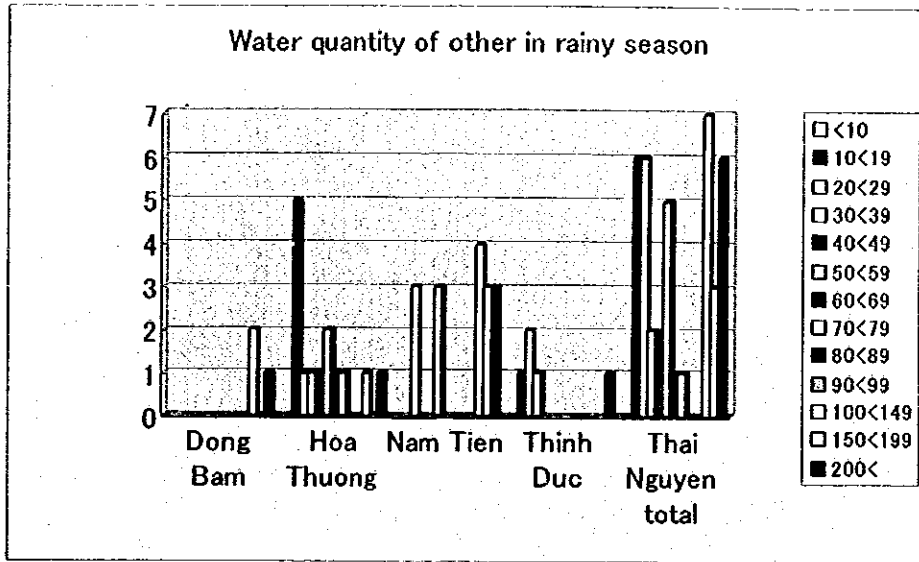


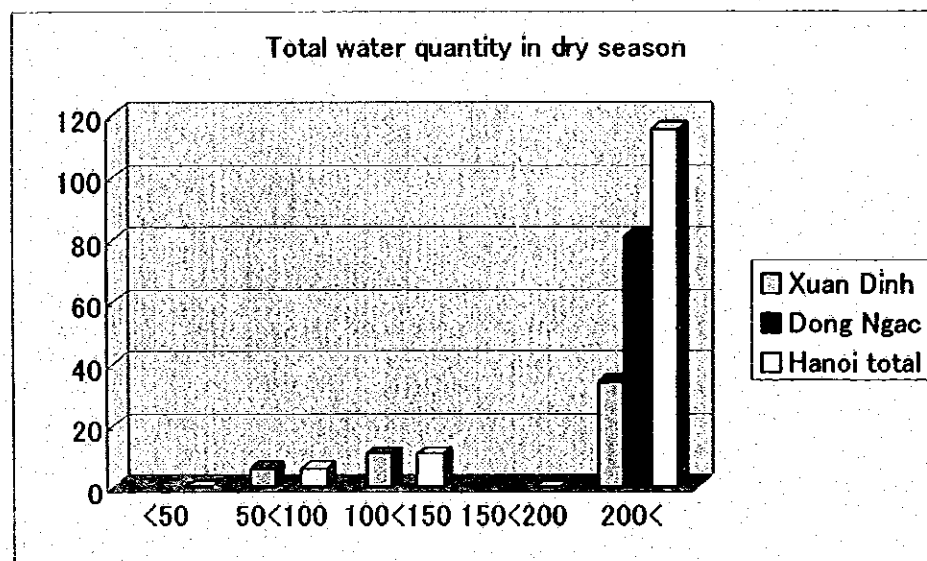
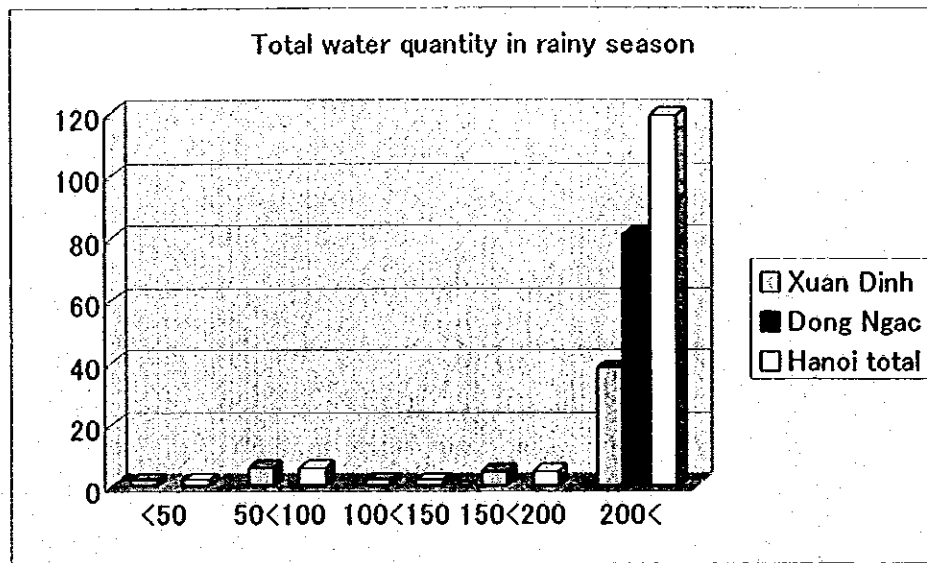


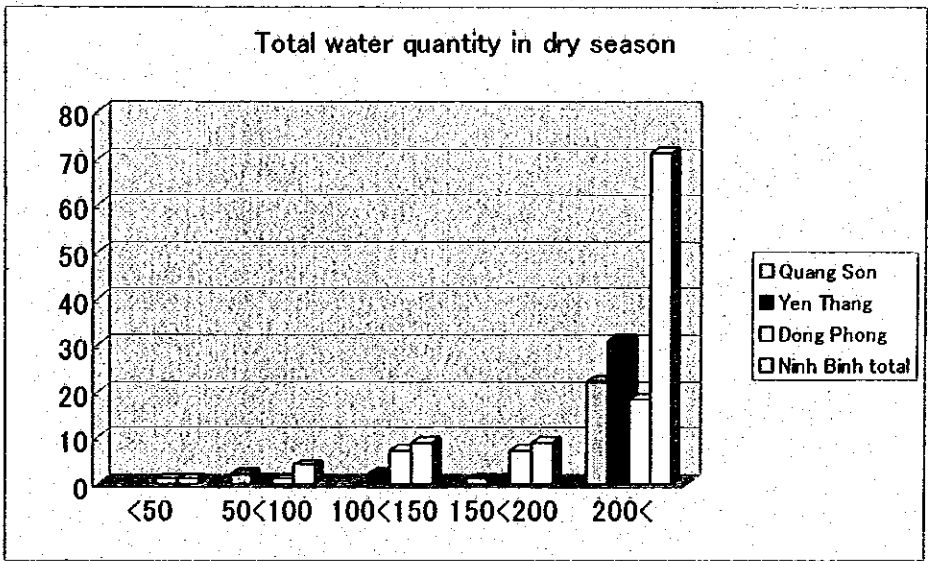
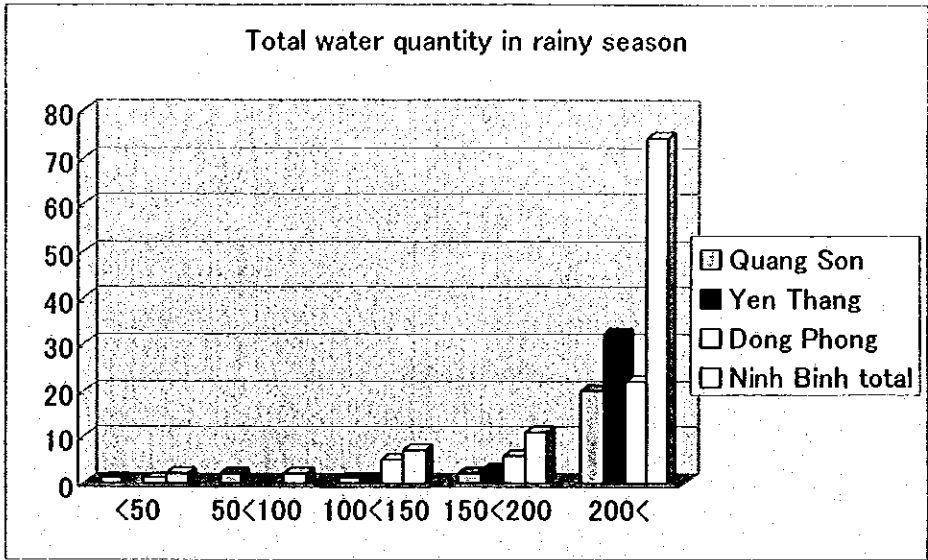


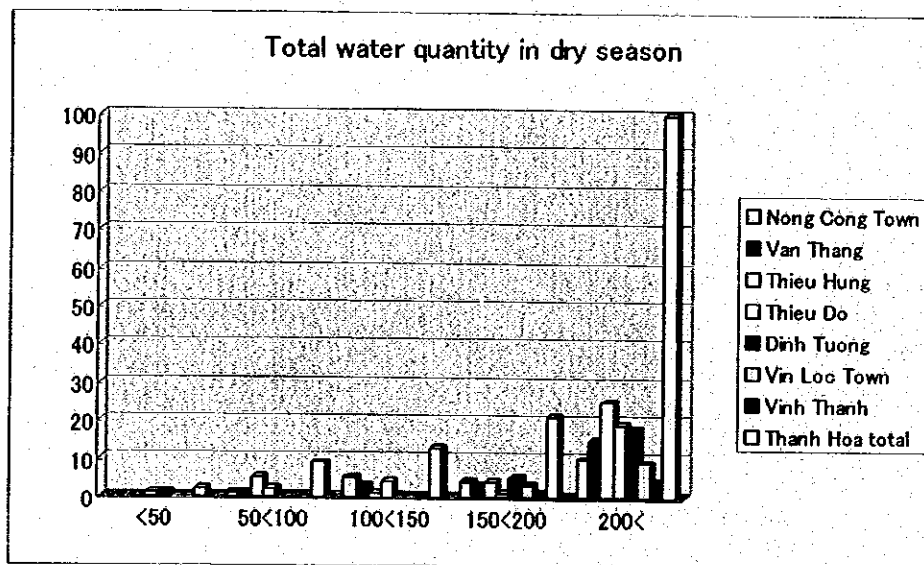
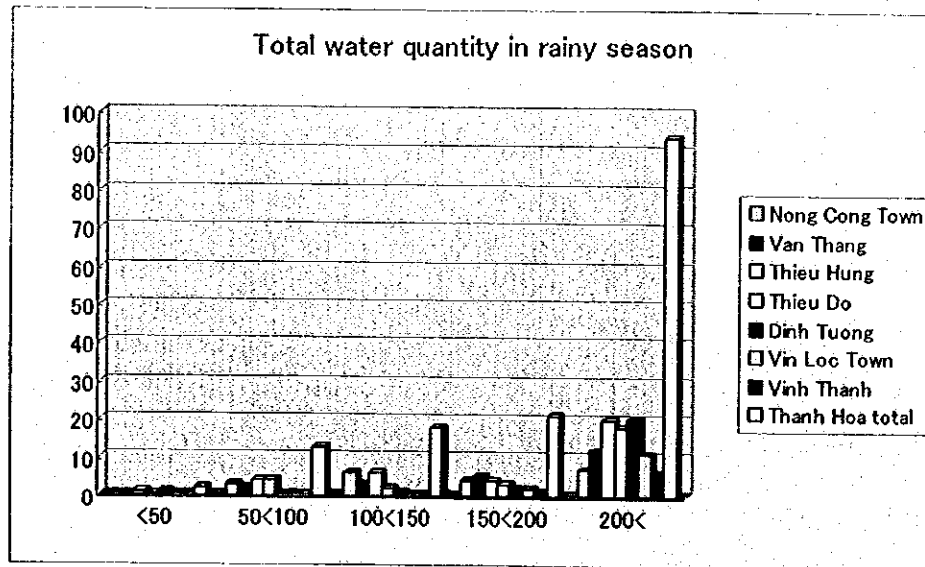


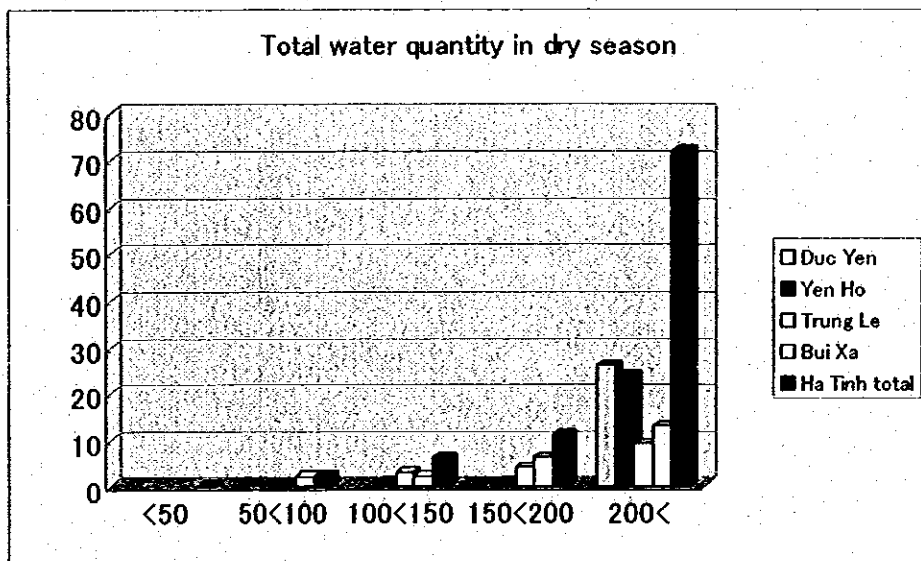
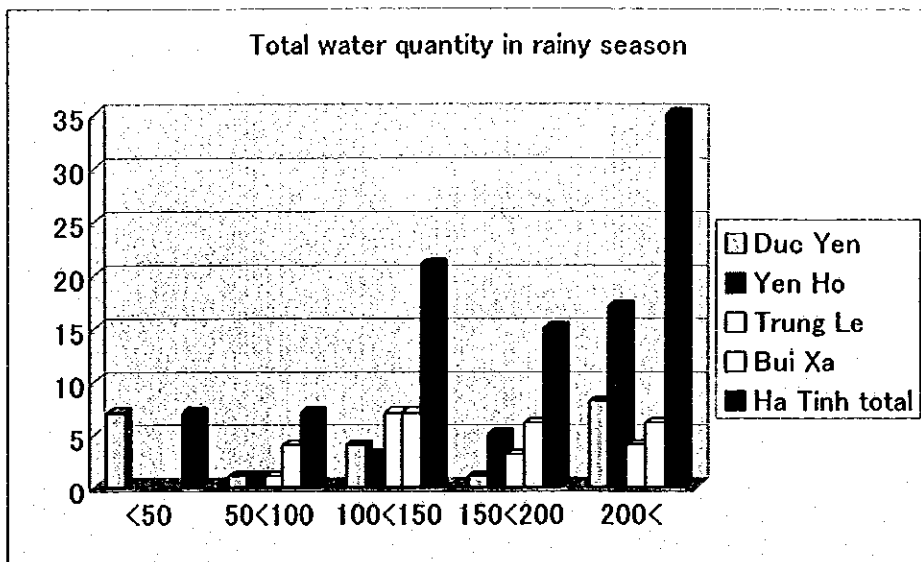


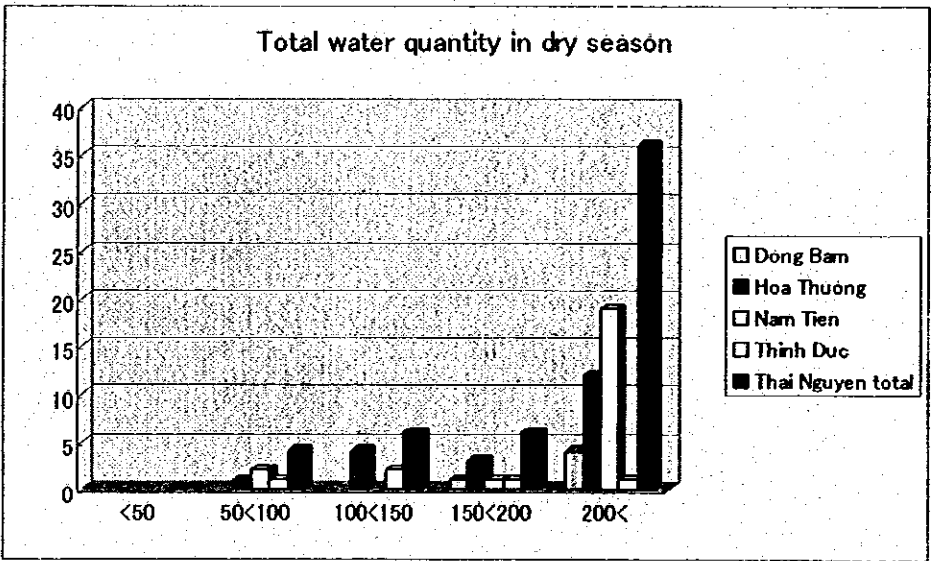
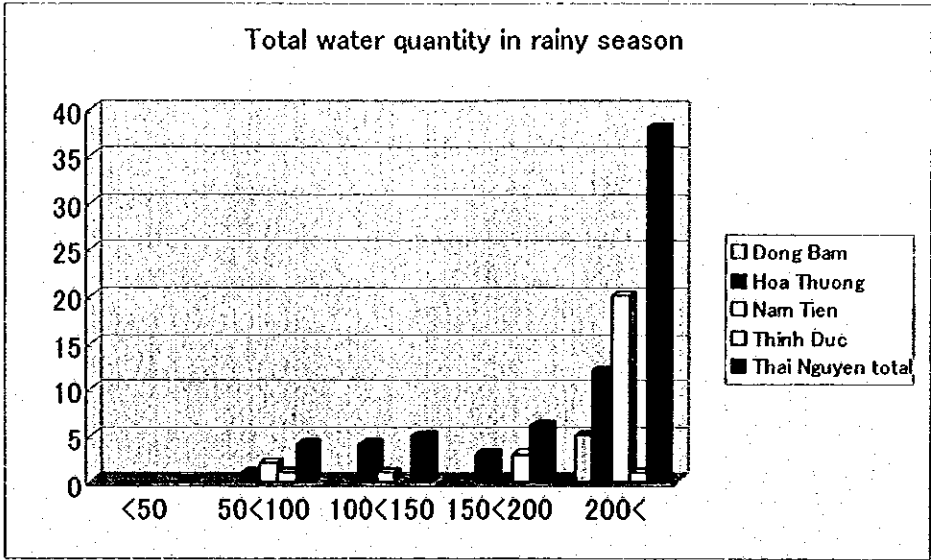


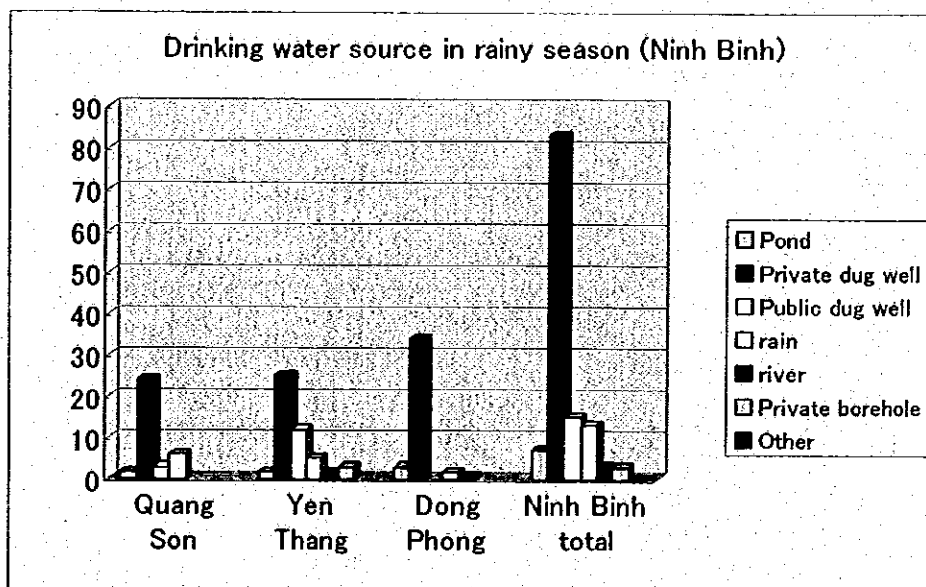
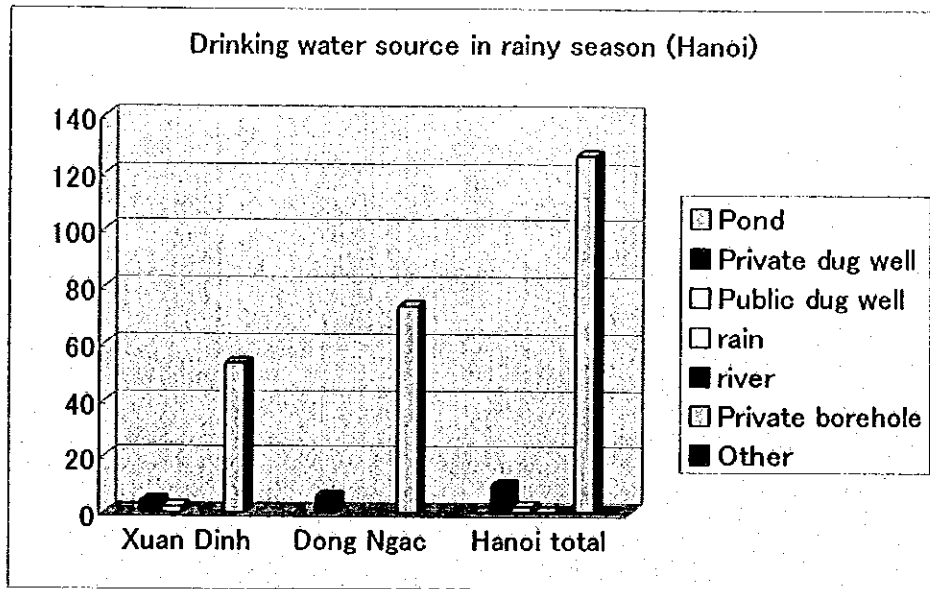


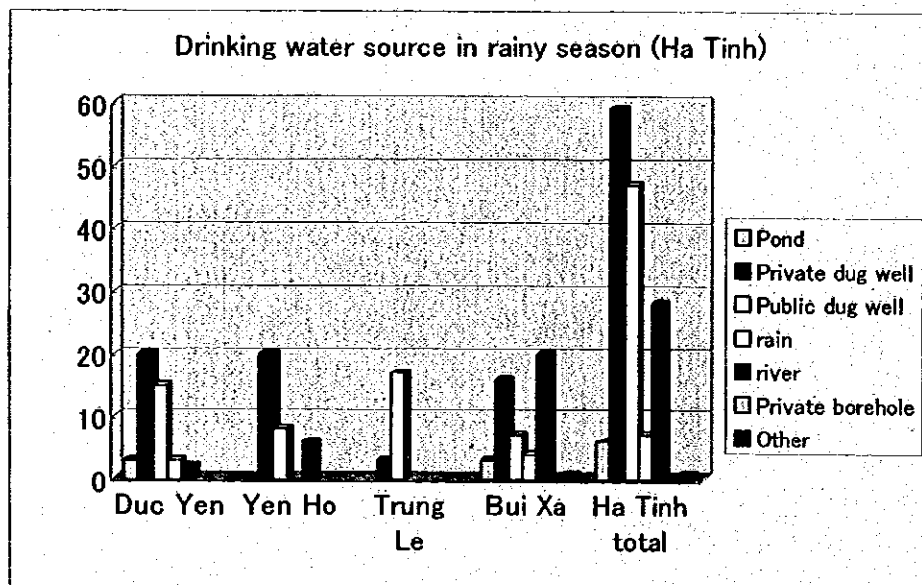
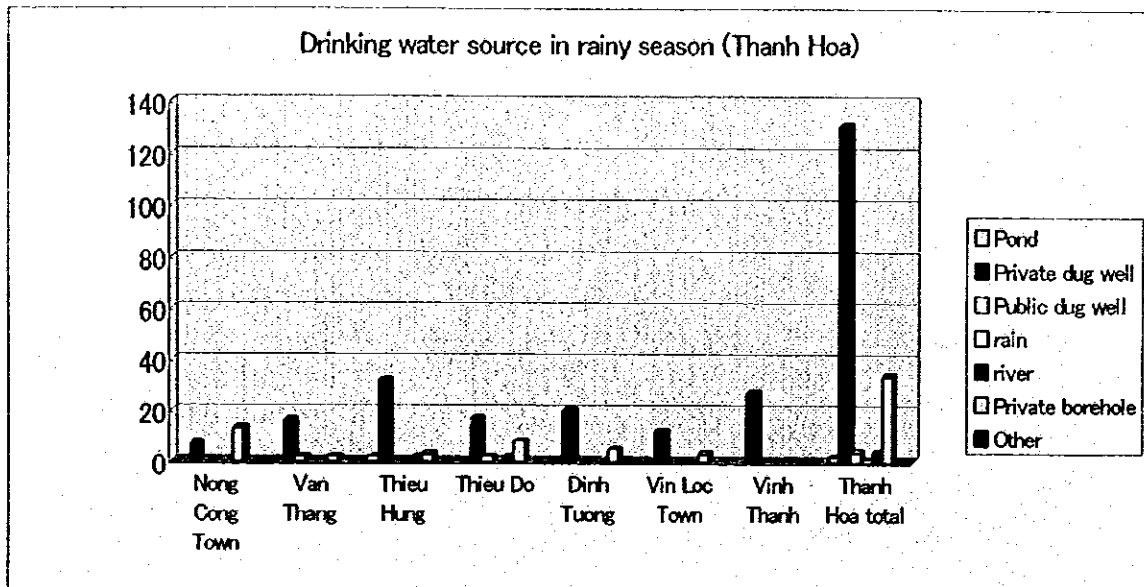


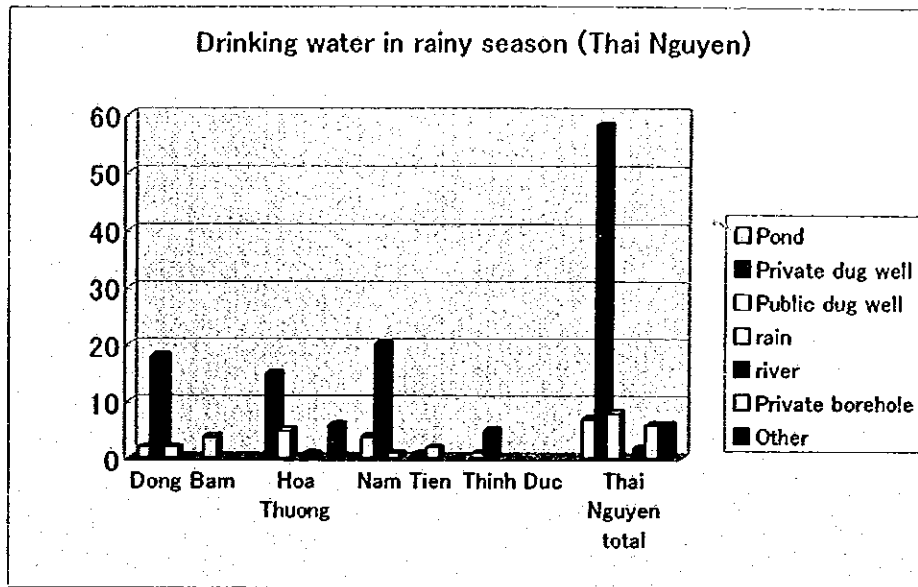




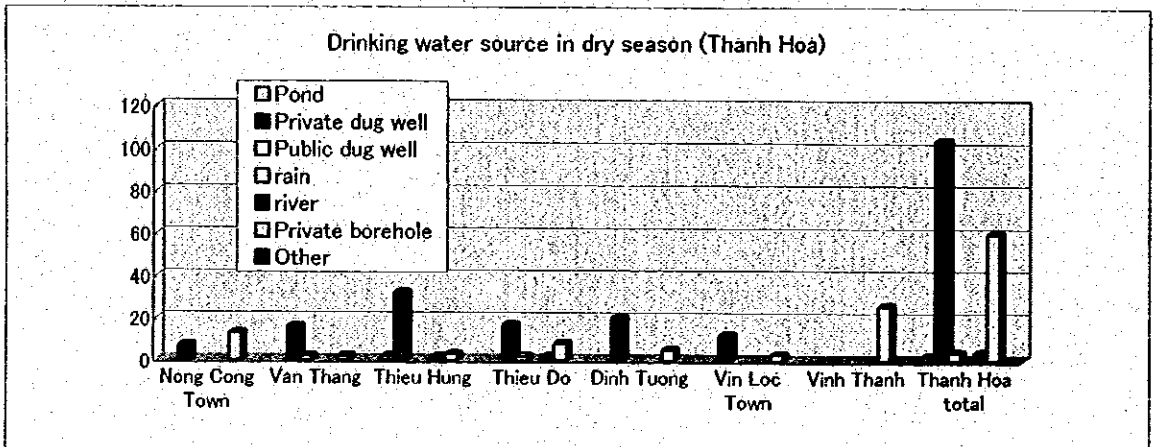
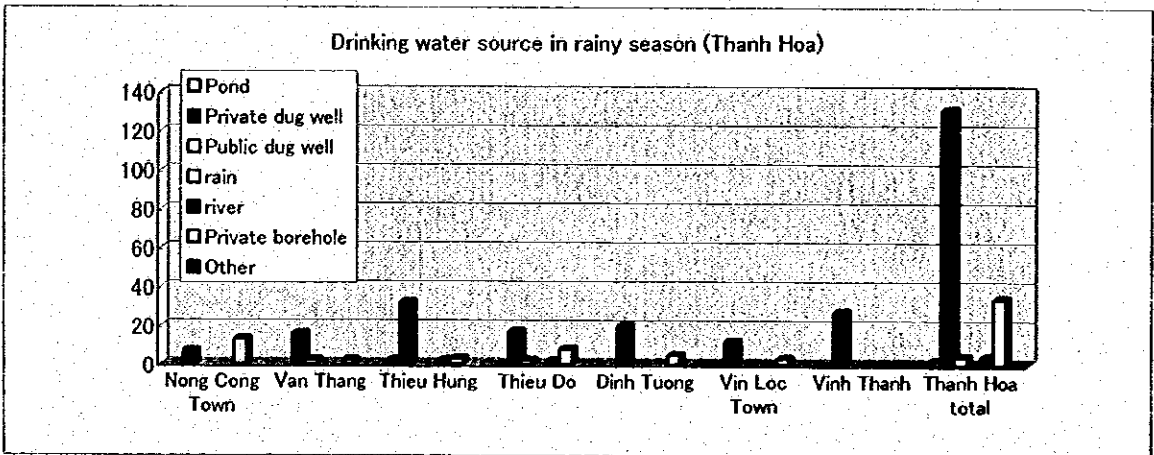
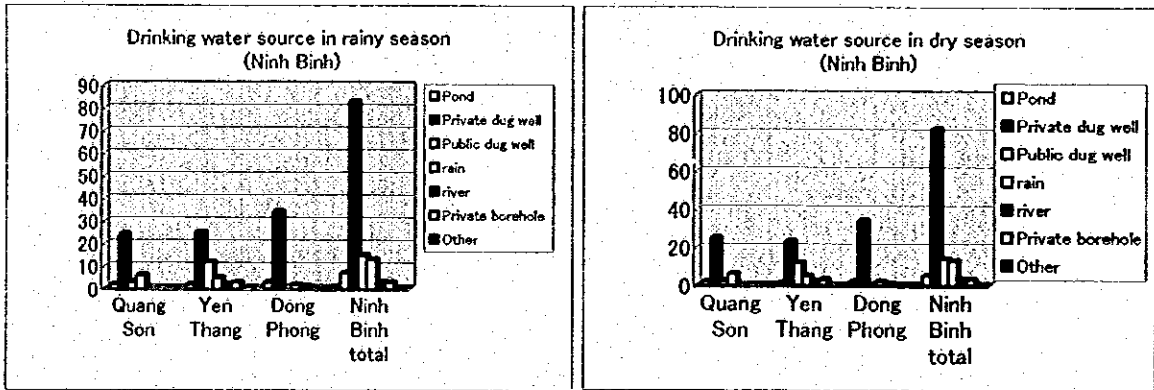
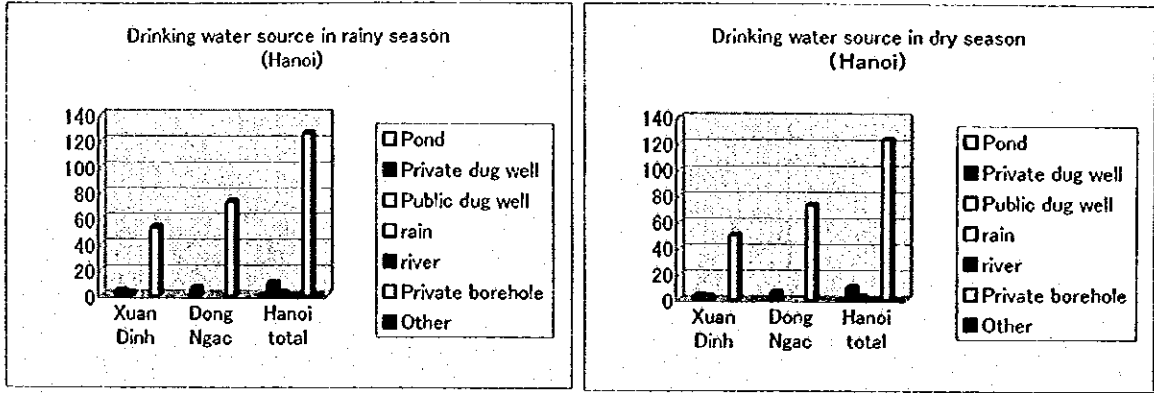


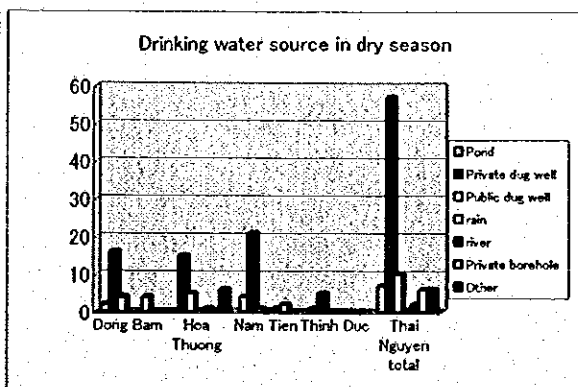
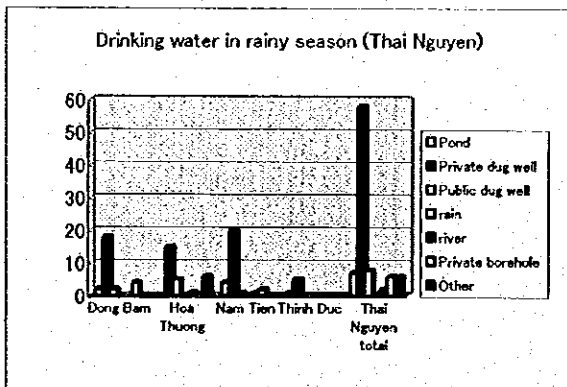
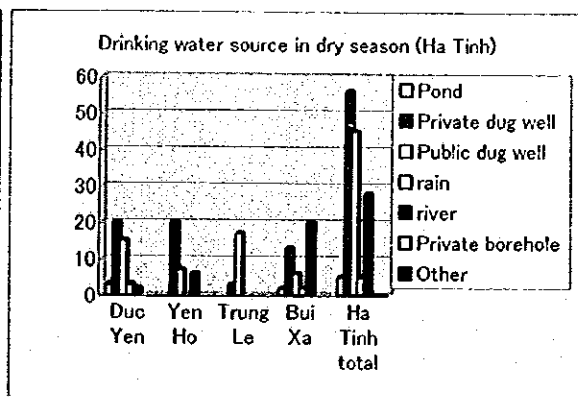
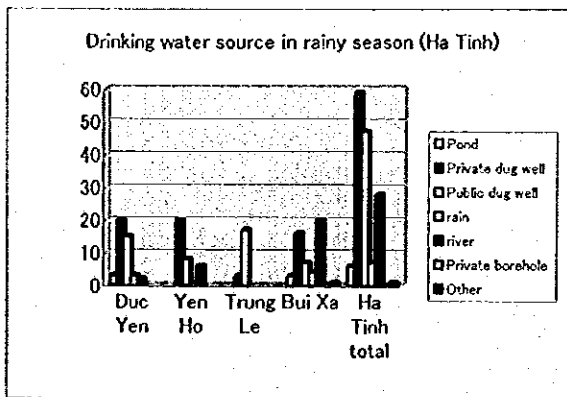




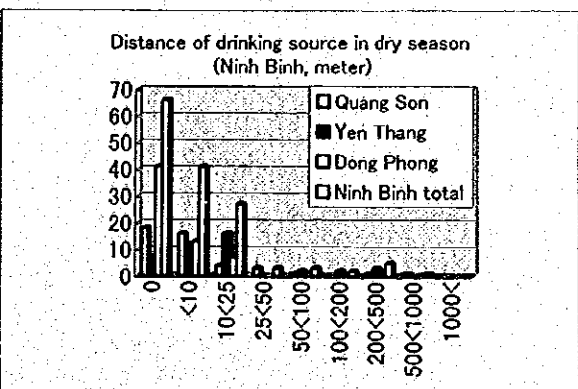
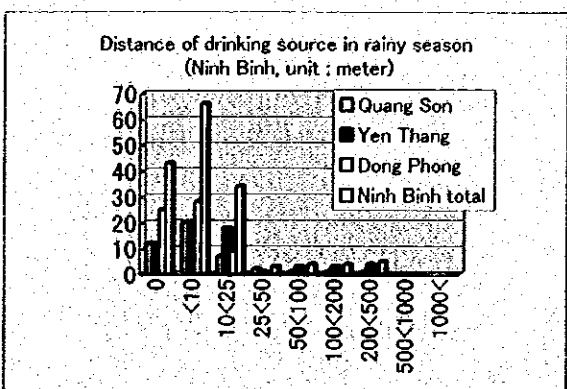
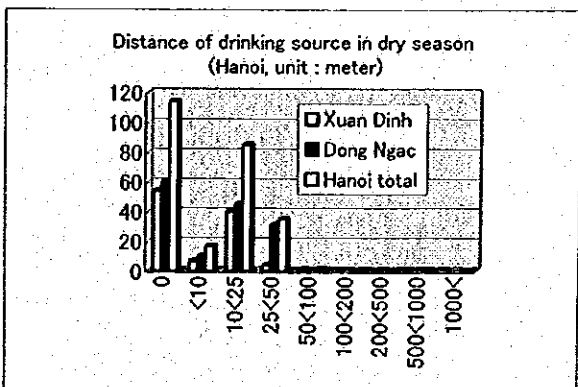
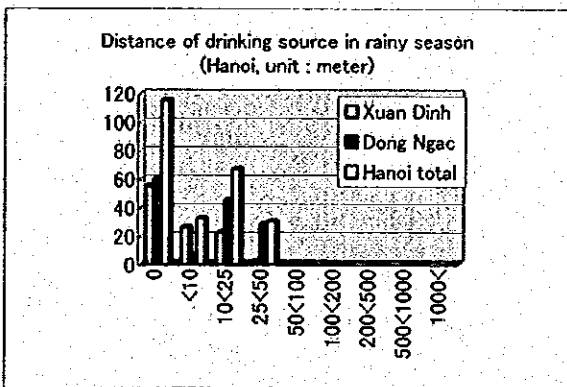


The drinking water source in each communes

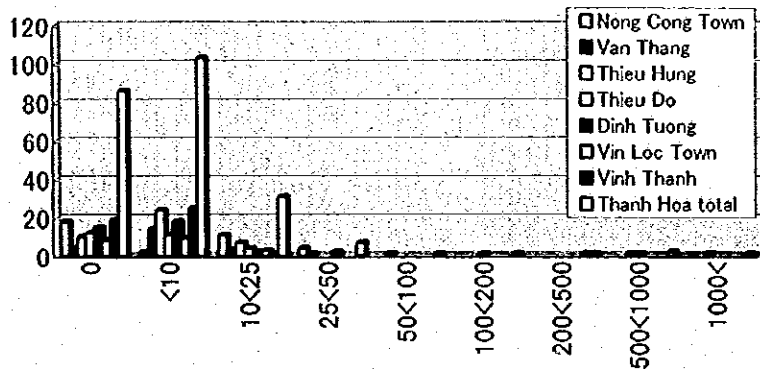




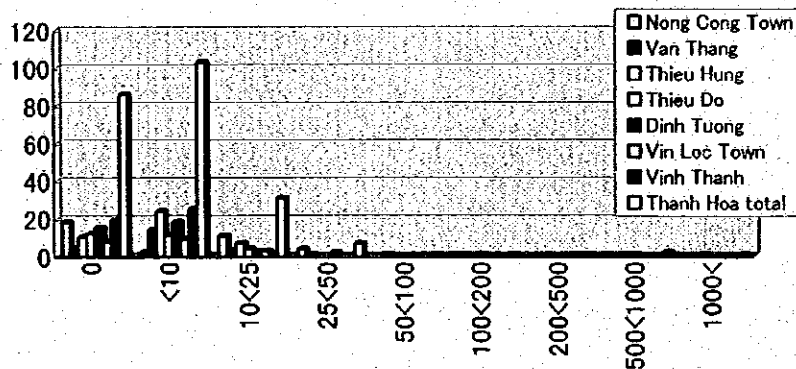
The distance of drinking source in each commune



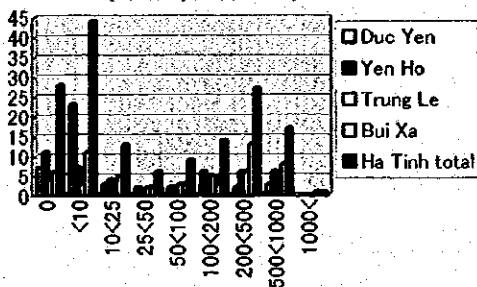
Distance of drinking source in rainy season (Thanh Hoa, unit : meter)



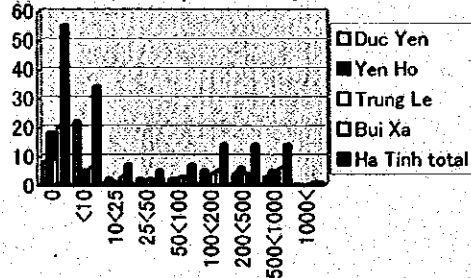
Distance of drinking source in dry season (Thanh Hoa, unit : meter)



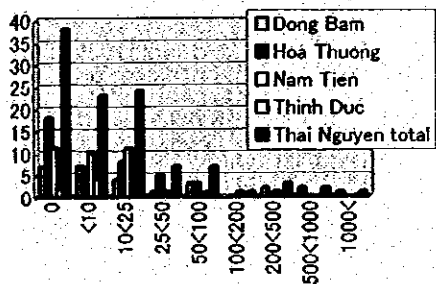
Distance of drinking source in rainy season (Ha Tinh, unit : meter)



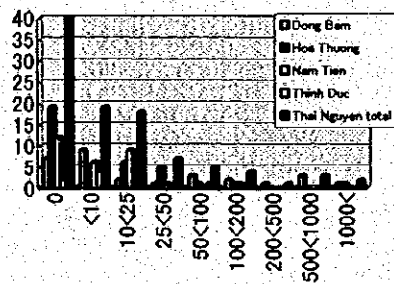
Distance of drinking source in dry season (Ha Tinh, unit : meter)



Distance of drinking source in rainy season (Thai Nguyen, unit : meter)

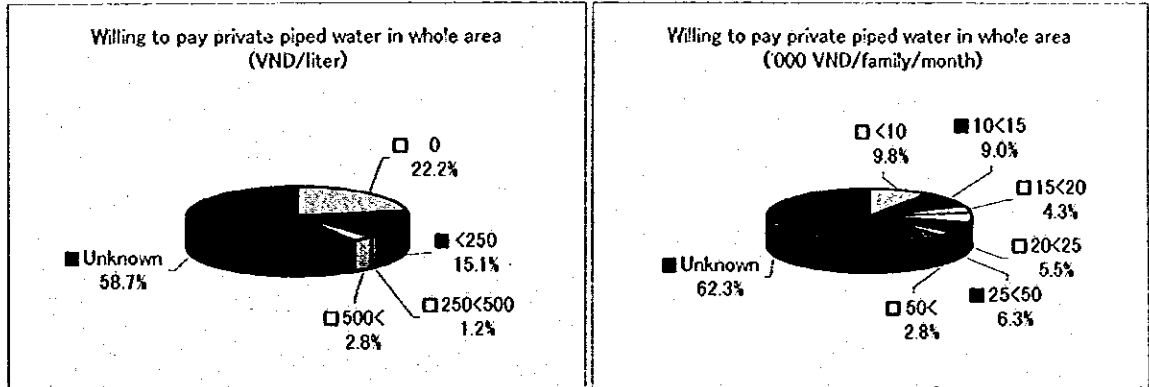


Distance of drinking source in dry season (Thai Nguyen, unit : meter)

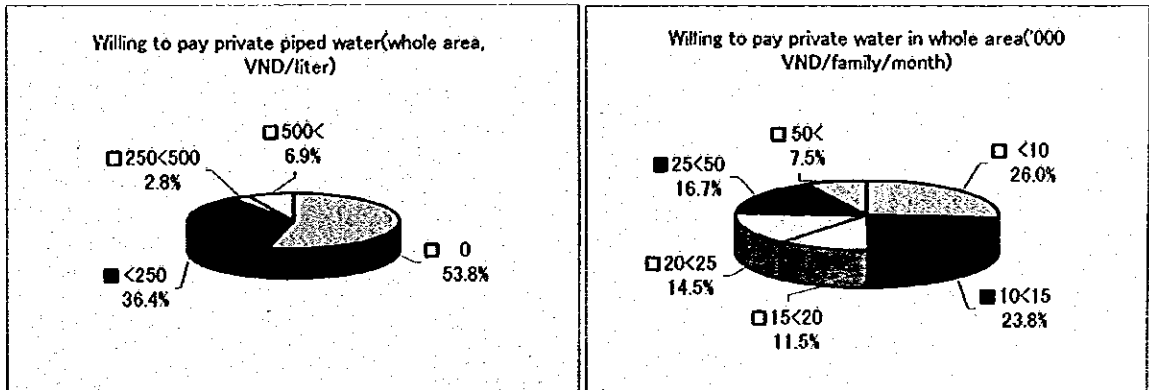


Willing to pay private piped water

These below figure were compared willing to pay private piped water including unknown answer. It is understood that there is not knowledge for the water service charge.



These below figures were compared willing to pay private piped water excluding unknown answer.



These below figures were compared willing to pay private piped water in provinces basis.. As a characteristic result, Hanoi and Ninh Binh provinces has a payment intention of under 250 VND/liter. About 40% to 50% inhabitants in Ha Tinh and Thai Nguyen province has a payment intention of over 500 VND/liter.

