

(3) The space of house and its number of room

Figure 11 and figure 12 shows the space of house and number of room in the target commune of Hanoi. It is understood that space of houses below 49 square meters in Dong Ngac commune (with 1 to 2 rooms) are the maximum numbers, against the space of house from 50 to 99 square meters in Xuan Dinh commune (with 3 to 4 rooms) are the maximum number.

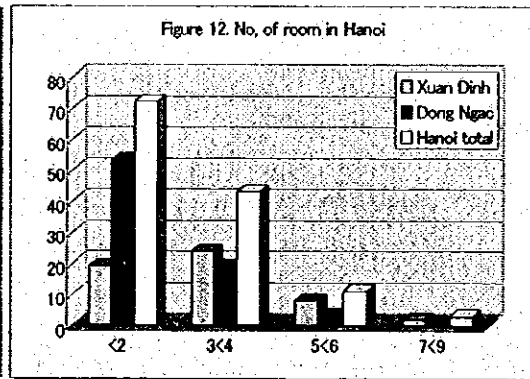
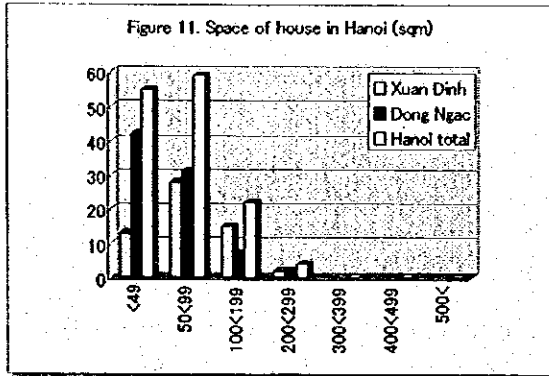


Figure 13 and figure 14 shows the space of house and number of room in the target commune of Ninh Binh. It is understood that space of houses from 200 to 299 square meters in Dong Phong commune (with 3 to 4 rooms) are the maximum numbers, against the space of house from 50 to 99 square meters in other commune (with 3 to 4 rooms) are the maximum number. Therefore, Dong Phone commune has a lot of comparatively big houses.

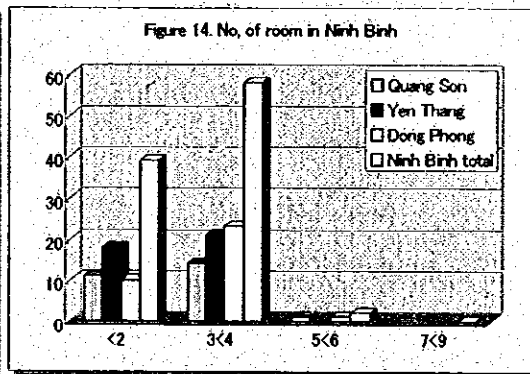
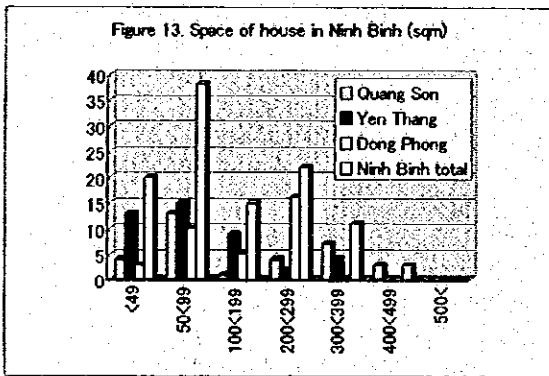


Figure 15 and figure 16 shows the space of house and number of room in the target commune of Thanh Hoa. It is understood that space of houses 50 to 99 square meters in all communes (with 3 to 4 rooms) are the maximum numbers.

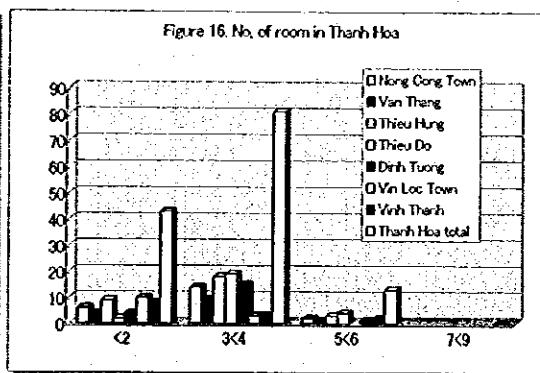
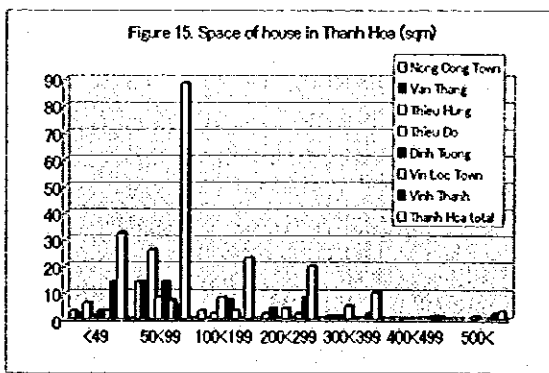


Figure 17 and figure 18 shows the space of house and number of room in the target commune of Ha Tinh. It is understood that space of houses 50 to 99 square meters in all communes (with 3 to 4 rooms) are the maximum numbers.

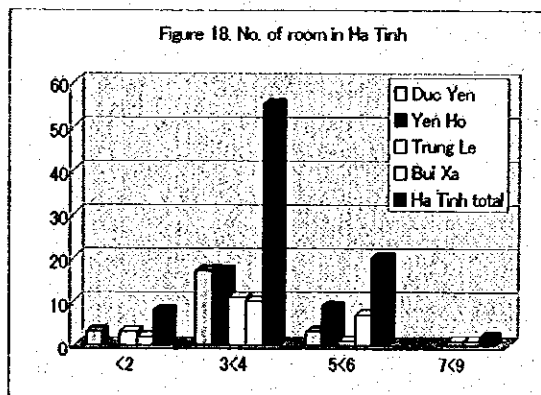
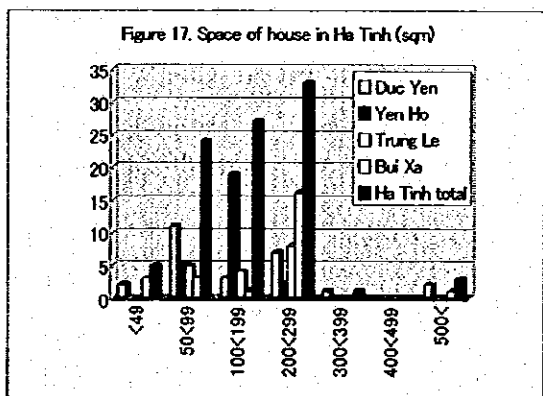
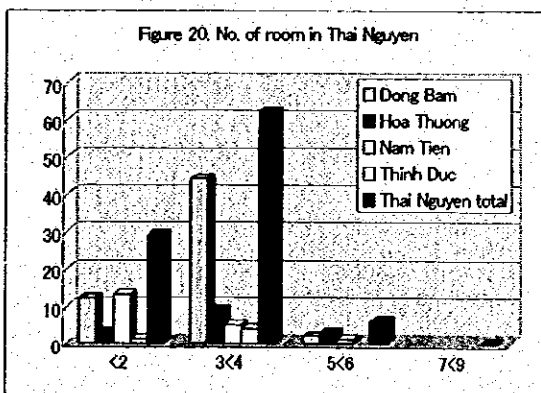
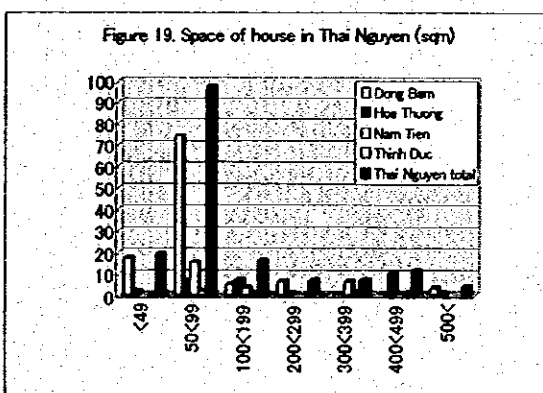


Figure 19 and figure 20 shows the space of house and number of room in the target commune of Thai Nguyen. It is understood that space of houses 50 to 99 square meters in all communes (with 3 to 4 rooms) are the maximum numbers.



(4) Income and borrowing money

Figure 21 and figure 22 shows the income and borrowing money in the target commune of Hanoi. It is understood that 1 to 5 million VND group in all communes (with no borrowing money) are the maximum numbers.

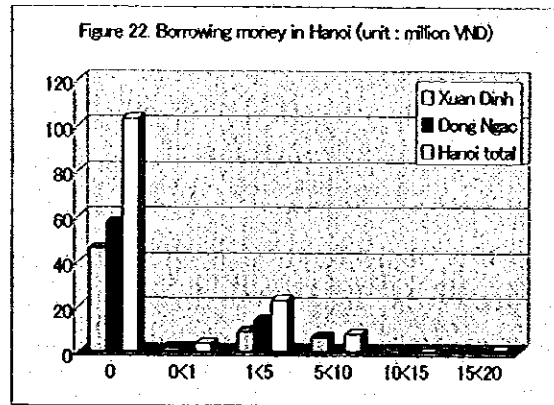
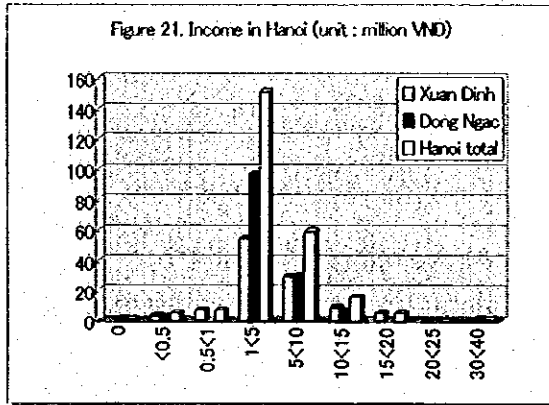


Figure 23 and figure 24 shows the income and borrowing money in the target commune of Ninh Binh. It is understood that income group on 1 to 5 million VND in all communes are the maximum numbers, however borrowing money on 1 to 5 million VND in all communes are also the maximum numbers.

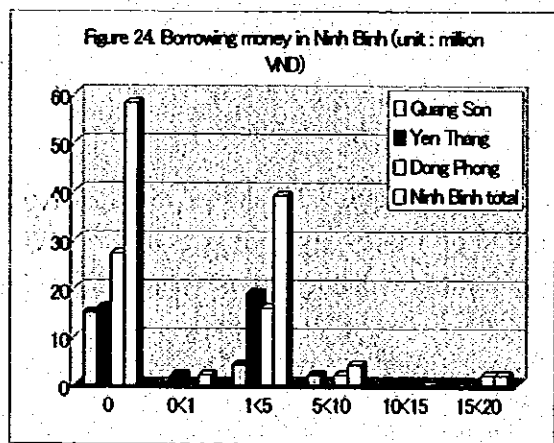
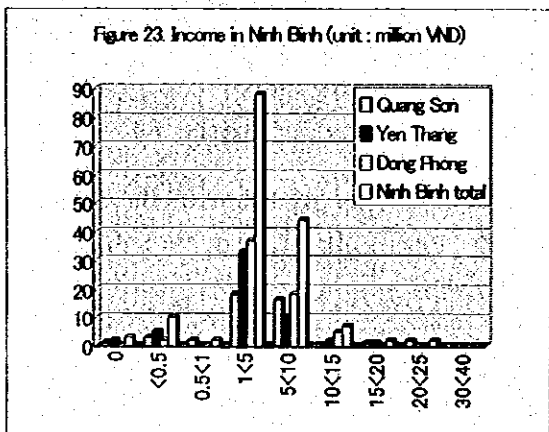
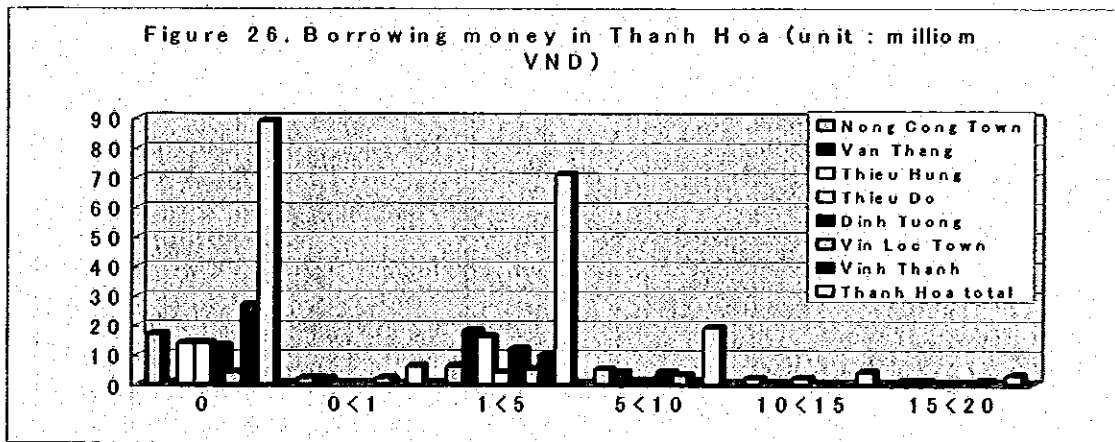
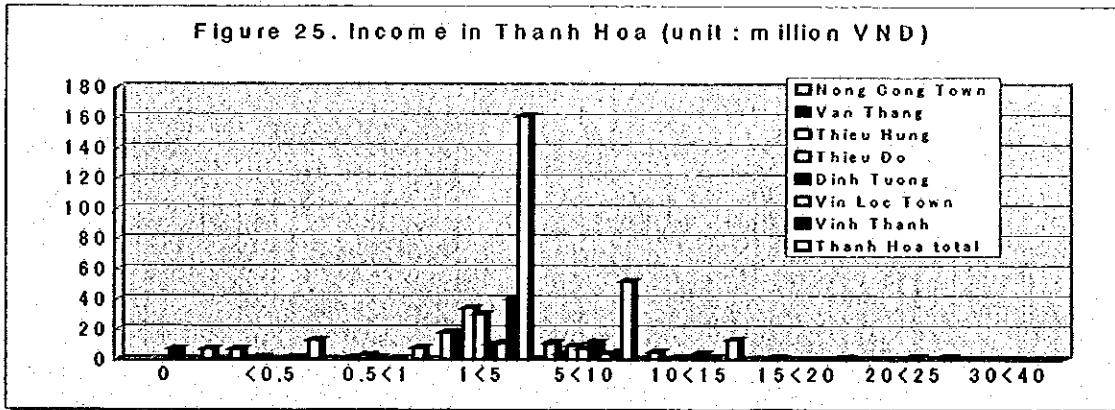
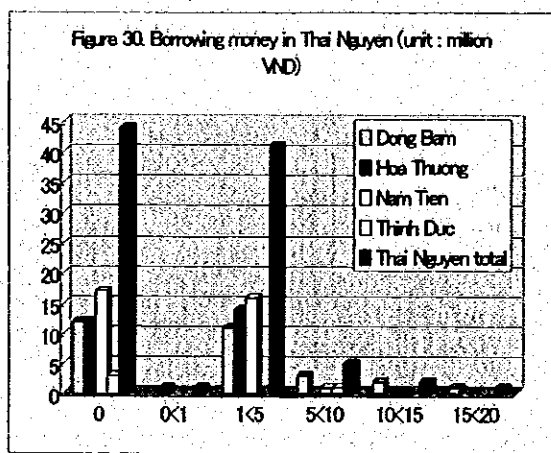
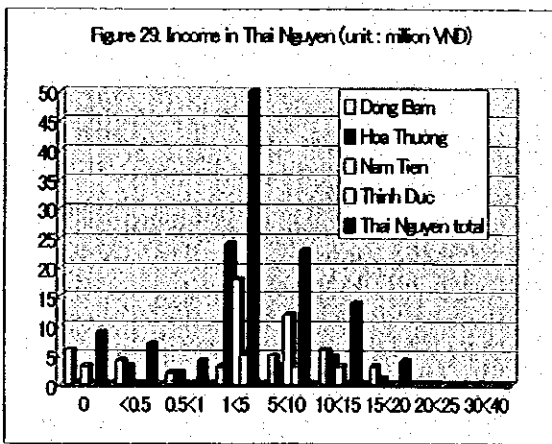
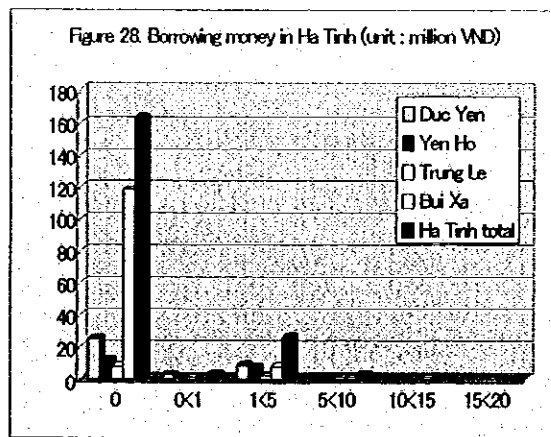
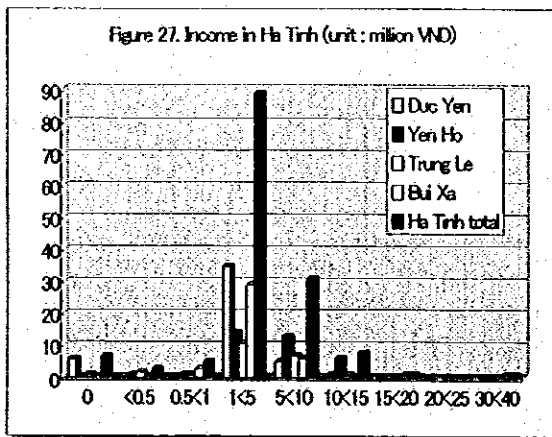


Figure 25 and figure 26 shows the income and borrowing money in the target commune of Thanh Hoa. It is understood that income group on 1 to 5 million VND in all communes are the maximum numbers, however borrowing money on 1 to 5 million VND in all communes are also the maximum numbers.



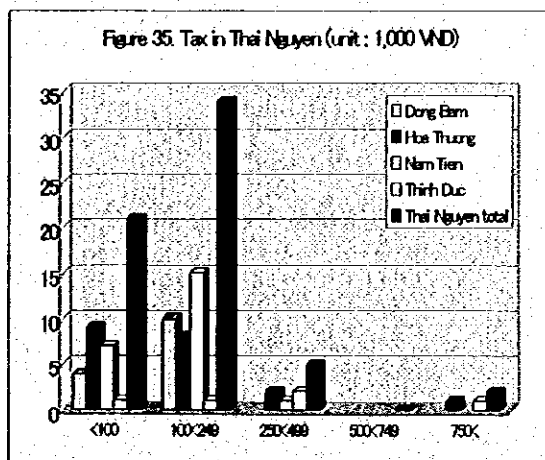
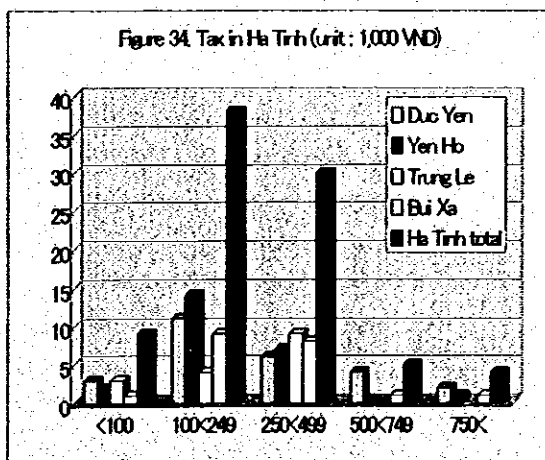
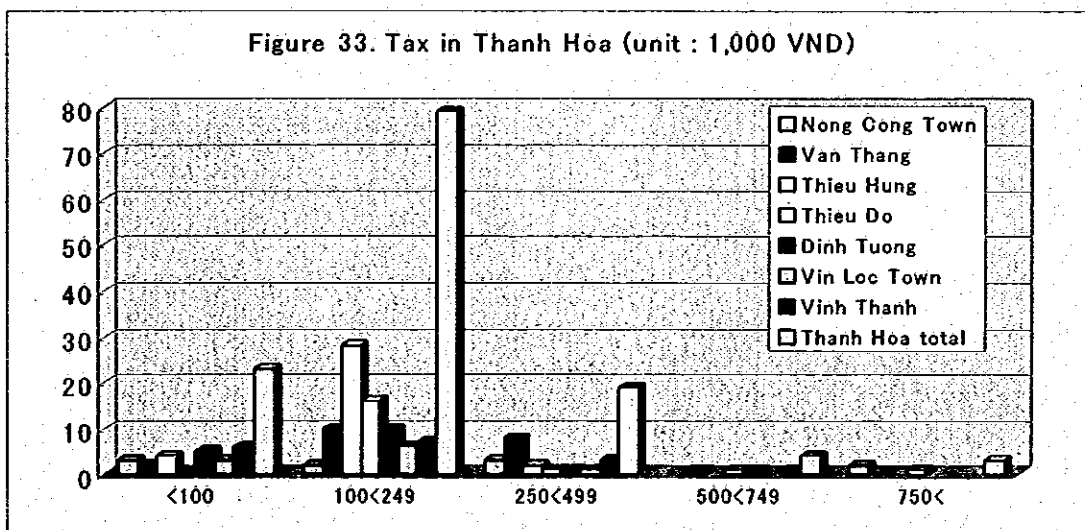
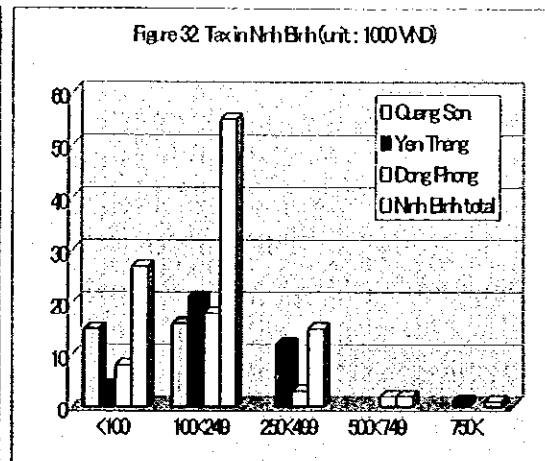
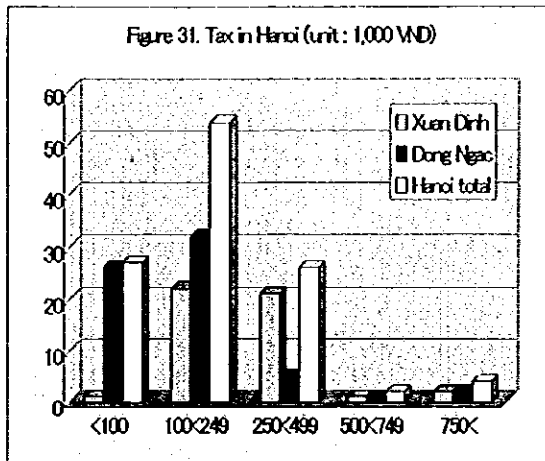
(5) Income and borrowing money

Figure 27 to figure 30 shows the income and borrowing money in the target commune of Ha Tinh and Thai Nguyen. It is understood that income group on 1 to 5 million VND in all communes are the maximum numbers, however borrowing money on 1 to 5 million VND in all communes are also the maximum numbers.



(6) Tax payment

Figure 31 to figure 35 shows the tax payment in the target commune, Hanoi, Ninh Binh, Thanh Hoa, Ha Tinh and Thai Nguyen. All communes In the Ha Tinh and Xuan Dinh in Hanoi, the group of tax payment on 100,000 to 500,000 VND are the maximum numbers. All communes in the Thai Nguyen and Dong Ngac in Hanoi, the group of tax payment on under 100,000 VND and 100,000 to 250,000 VND are the maximum numbers. The other communes in Ninh Binh and Thanh Hoa, the group of tax payment on 100,000 to 250,000 VND are the maximum numbers.

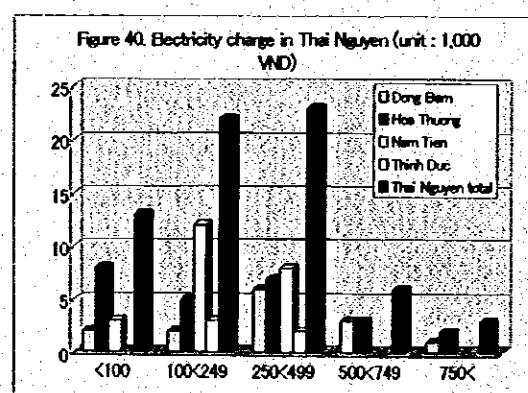
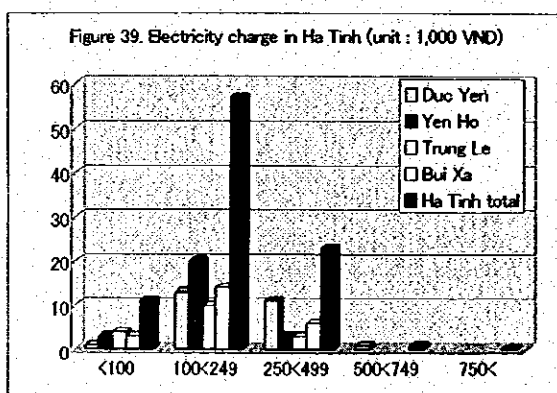
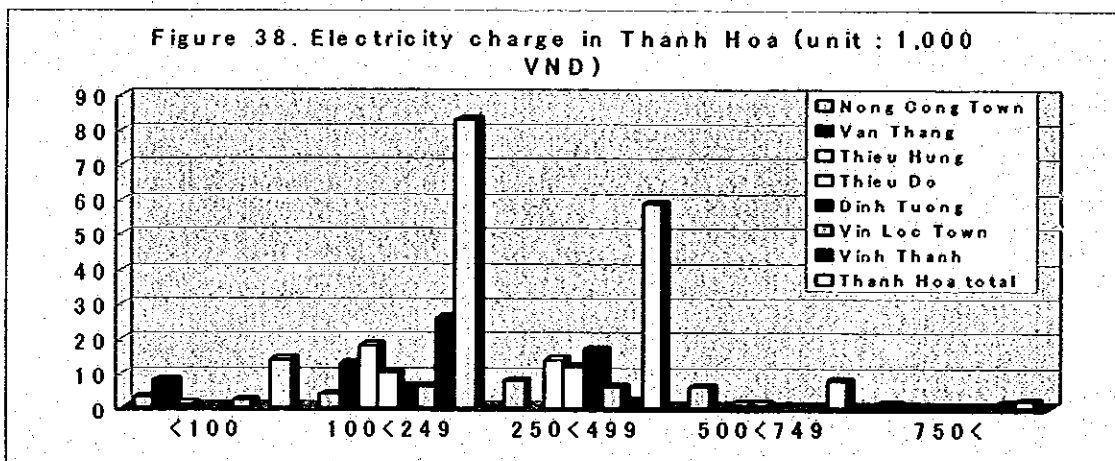
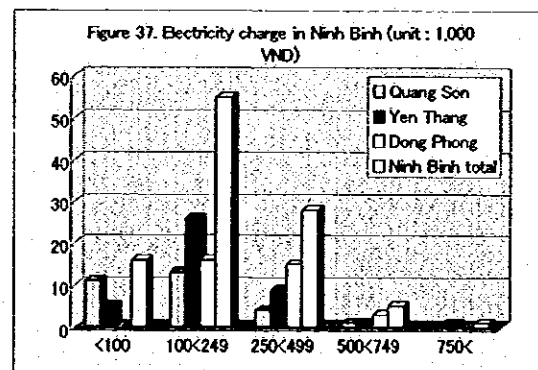
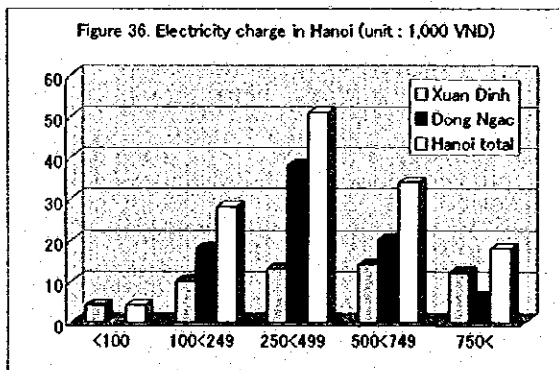


(7) Electricity charge

Figure 36 to figure 40 shows the electricity charge in the target communes, Hanoi, Ninh Binh, Thanh Hoa, Ha Tinh and Thai Nguyen.

All communes in Hanoi and Thai Nguyen, the group of electricity charge on 250,000 to 500,000 VND are the maximum numbers.

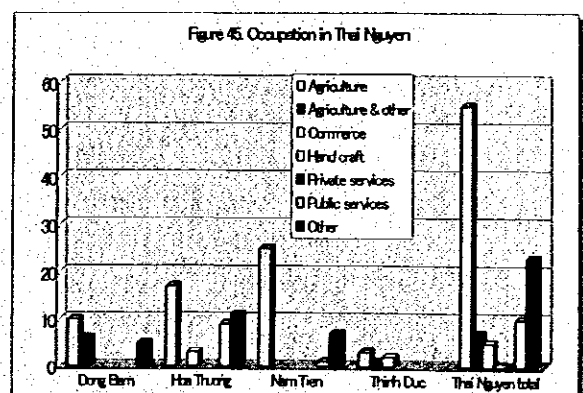
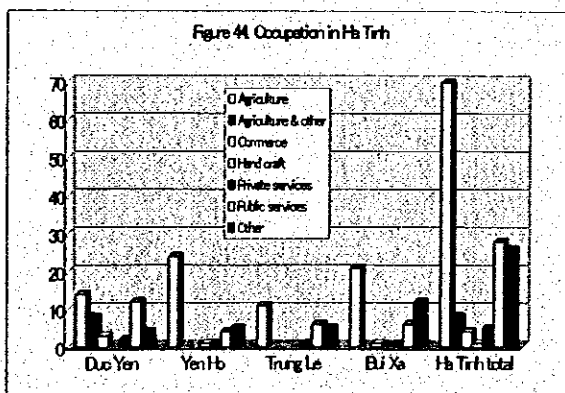
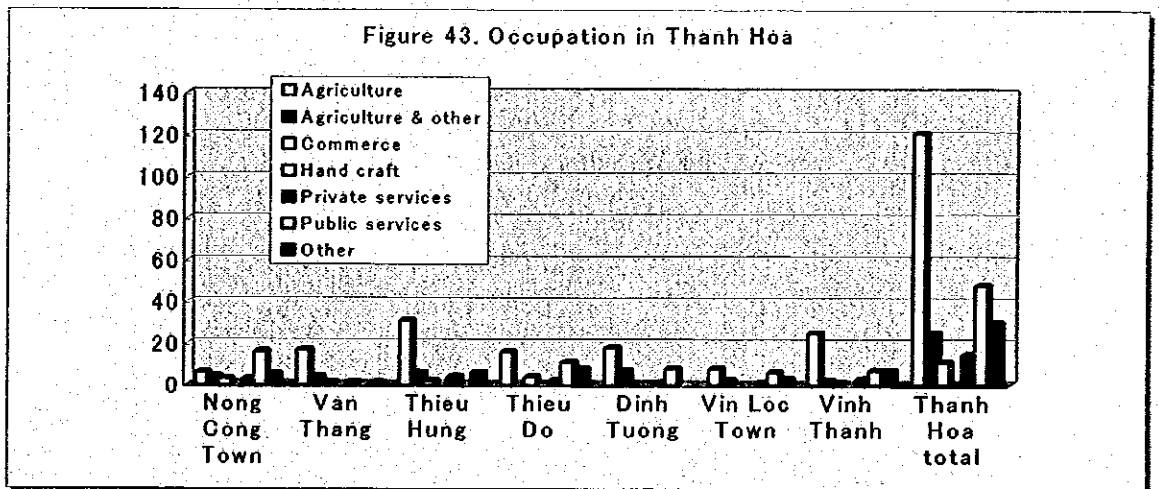
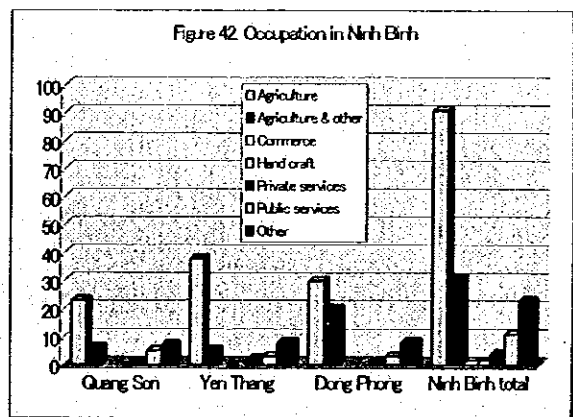
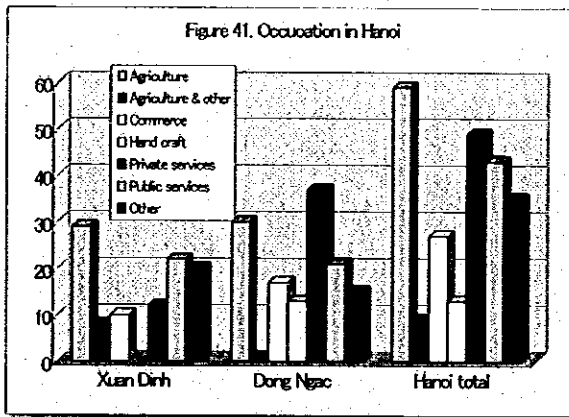
The other communes in Ninh Binh, Thanh Hoa and Ha Tinh, the group of electricity charge on 100,000 to 250,000 VND are the maximum numbers.



(8) Occupation

Figure 41 to figure 45 shows the occupation in the target commune, Hanoi, Ninh Binh, Thanh Hoa, Ha Tinh and Thai Nguyen. As for these, there is an engaging person or overwhelmingly a lot of farmer with a side business of agriculture.

In case of families In the Hanoi, many families are engaging the private services and public services.



(9) Number of sick person in family in last 6 months

Figure 46 to figure 45 shows the number of sick person in family in last 6 months in the target commune. The disease rate in whole area is in the following Figure 46, and 85 % of families are taking sick one person or two persons in 6 months. Figure 47 to Figure 51 shows the break down of Figure 46.

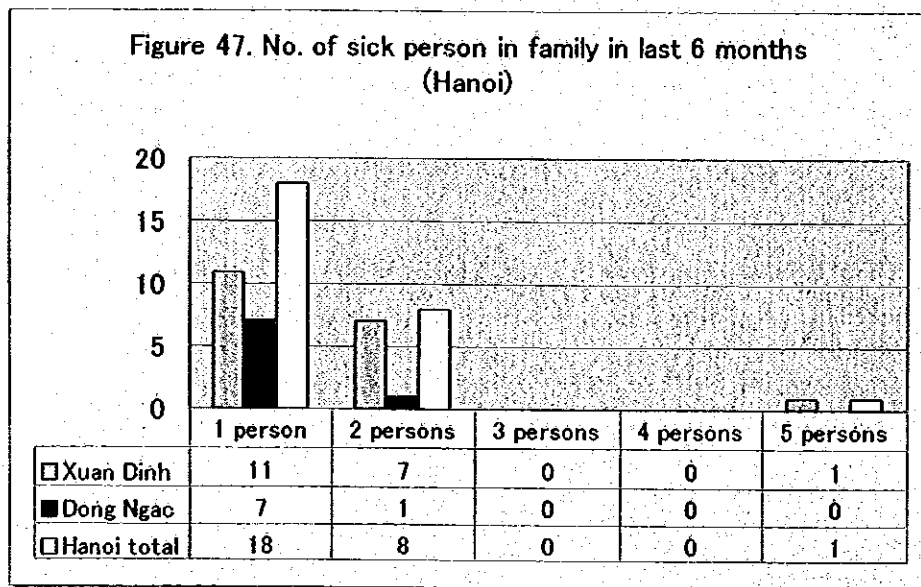
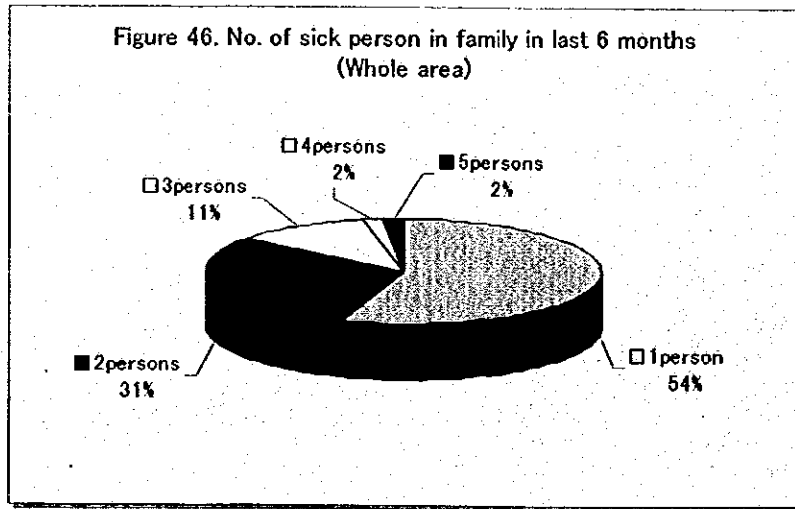


Figure 48. No. of sick person in family in last 6 months
(Ninh Binh)

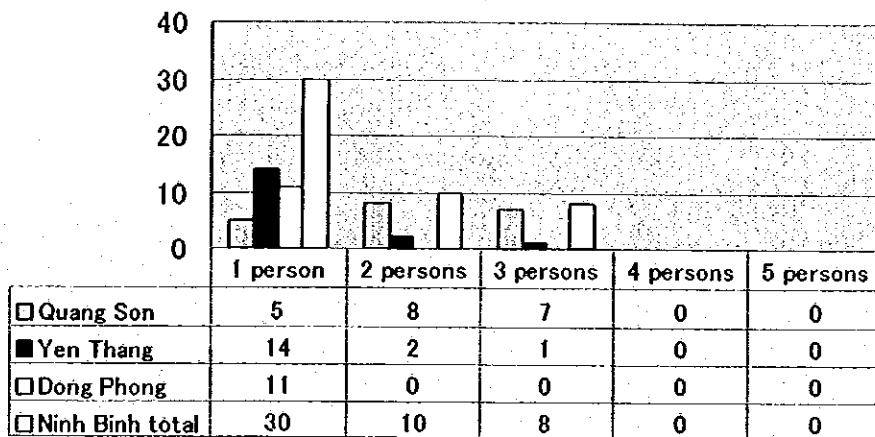


Figure 49. No. of sick person in family in last 6 months
(Thanh Hoa)

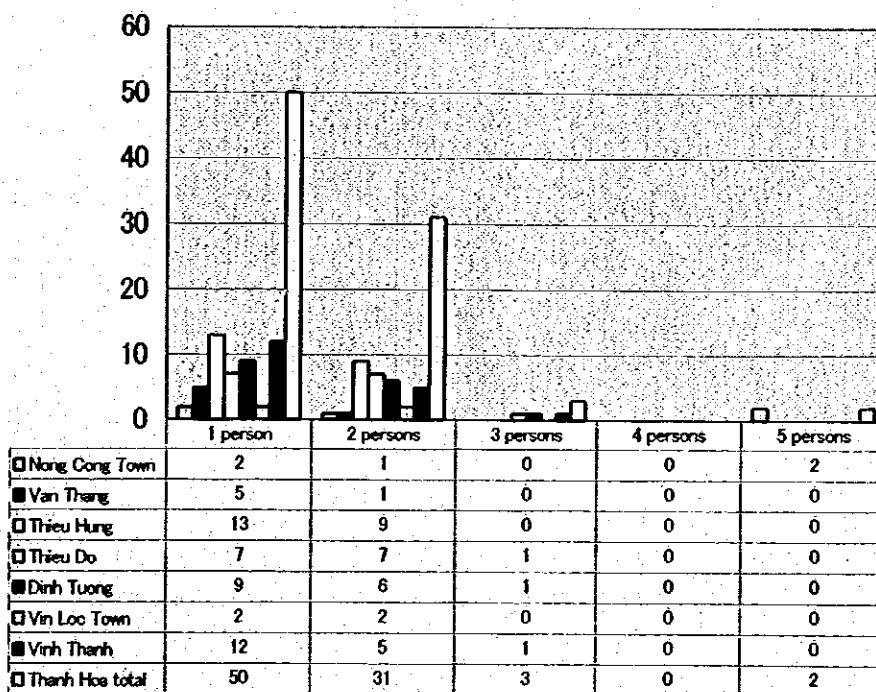


Figure 50. No. of sick person in family in last 6 months
(Ha Tinh)

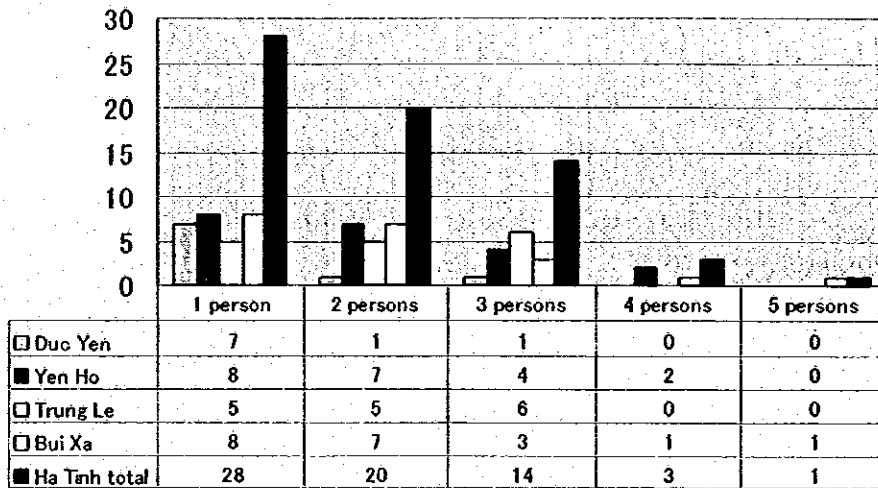
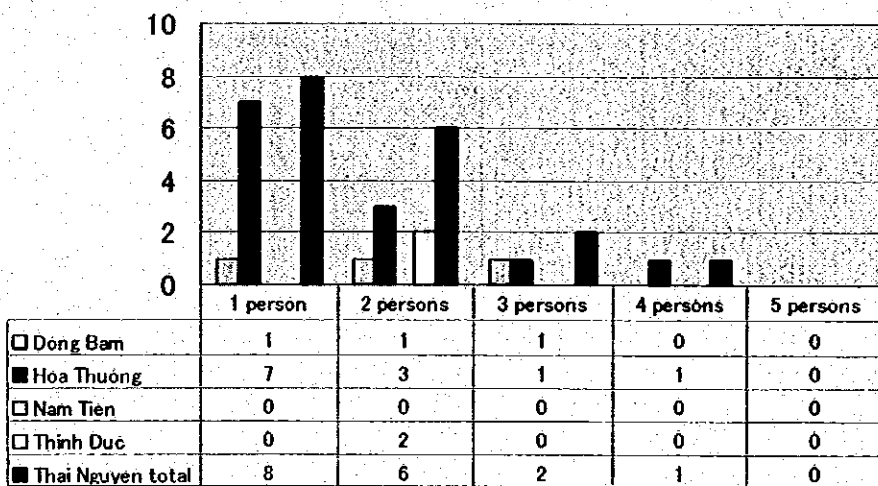


Figure 51. No. of sick person in family in last 6 months
(Thai Nguyen)



(10) How to dispose domestic waste water

Figure 52 to figure 57 shows the result of how to dispose domestic waste water in the target commune. Dispose away of waste water to the drain is only 31.6 percent. Figure 53 to Figure 57 shows the break down of Figure 52.

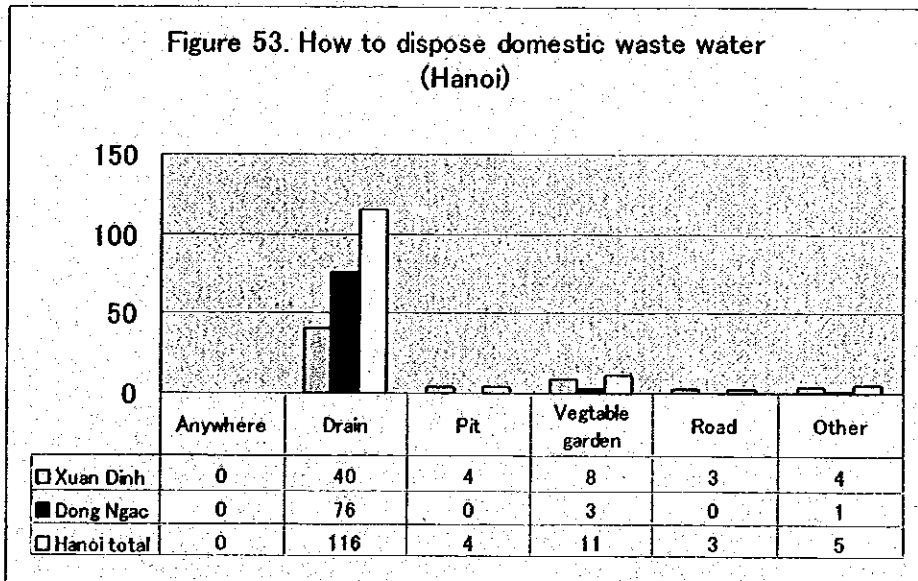
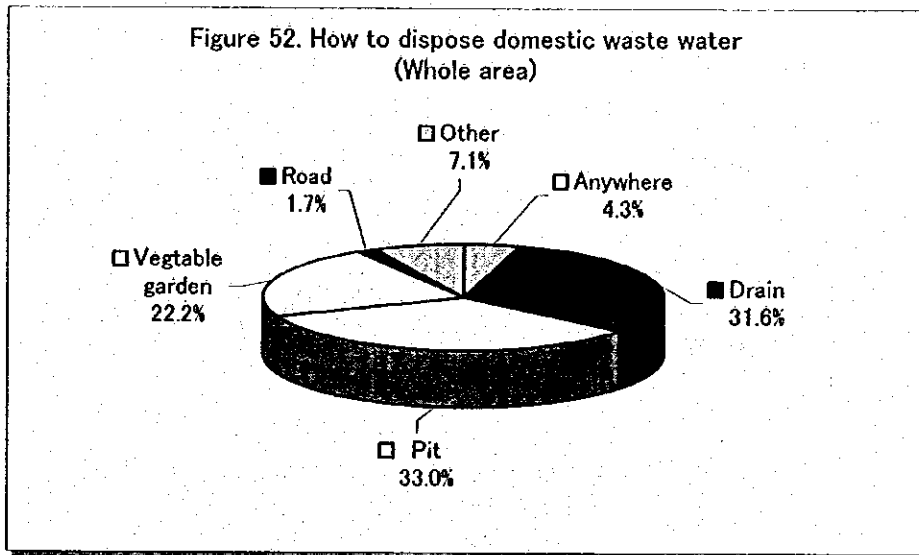


Figure 54. How to dispose domestic waste water (Ninh Binh)

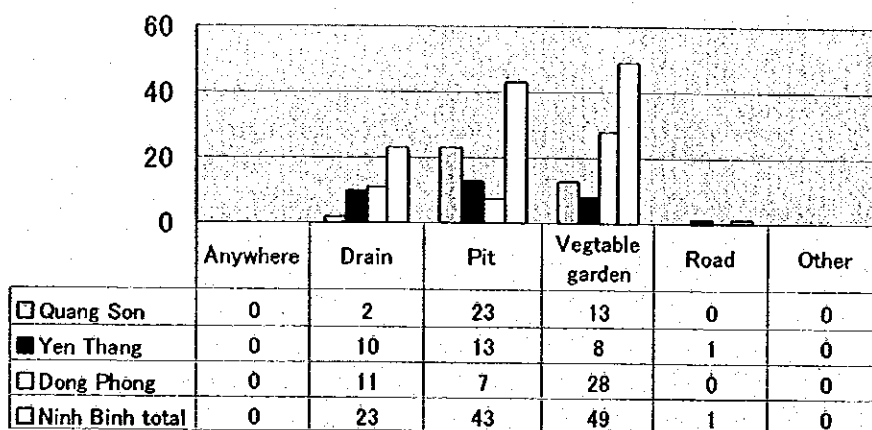


Figure 55. How to dispose domestic waste water (Thanh Hoa)

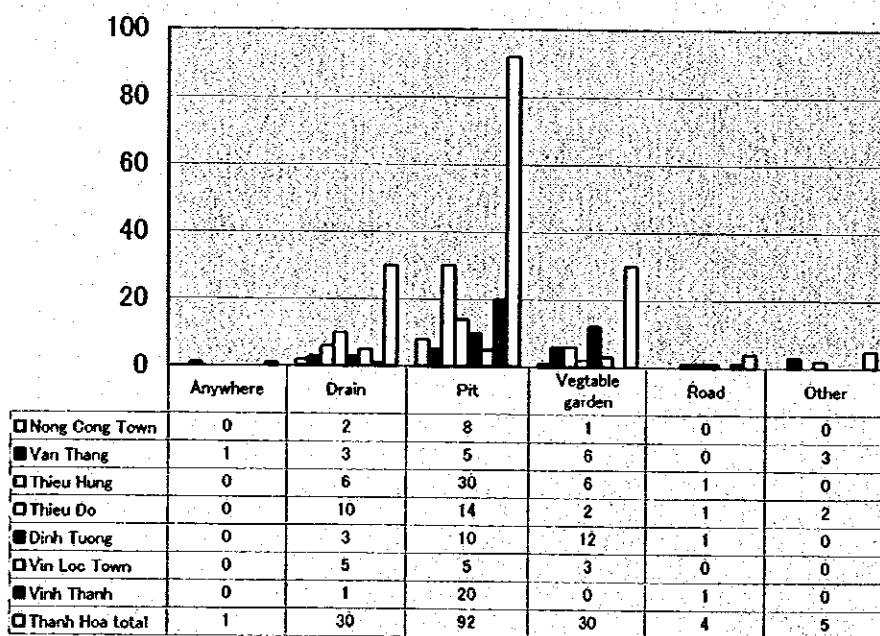


Figure 56. How to dispose domestic waste water (Ha Tinh)

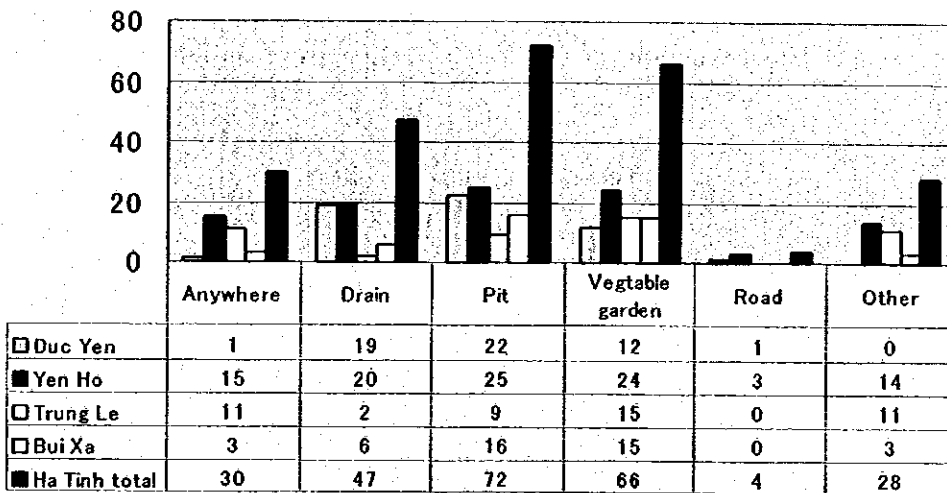
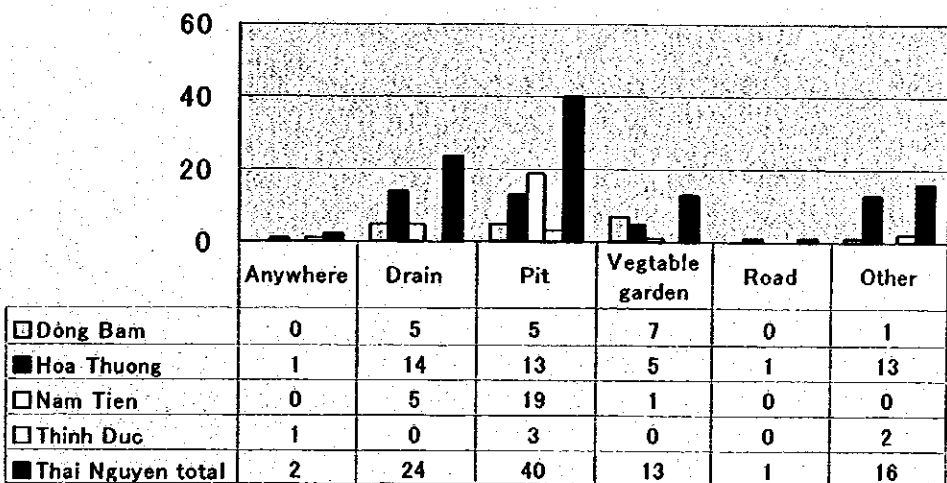


Figure 57. How to dispose domestic waste water (Thai Nguyen)



(11) Source of hygiene knowledge

Figure 58 to figure 63 shows the result of source of hygiene knowledge in the target commune. Unknown answers were 39%. Moreover, inhabitants in city part are getting a lot of information from the mass media such as the televisions, radio and news paper, and inhabitants in village part are getting a lot of information from public facilities such as health center.

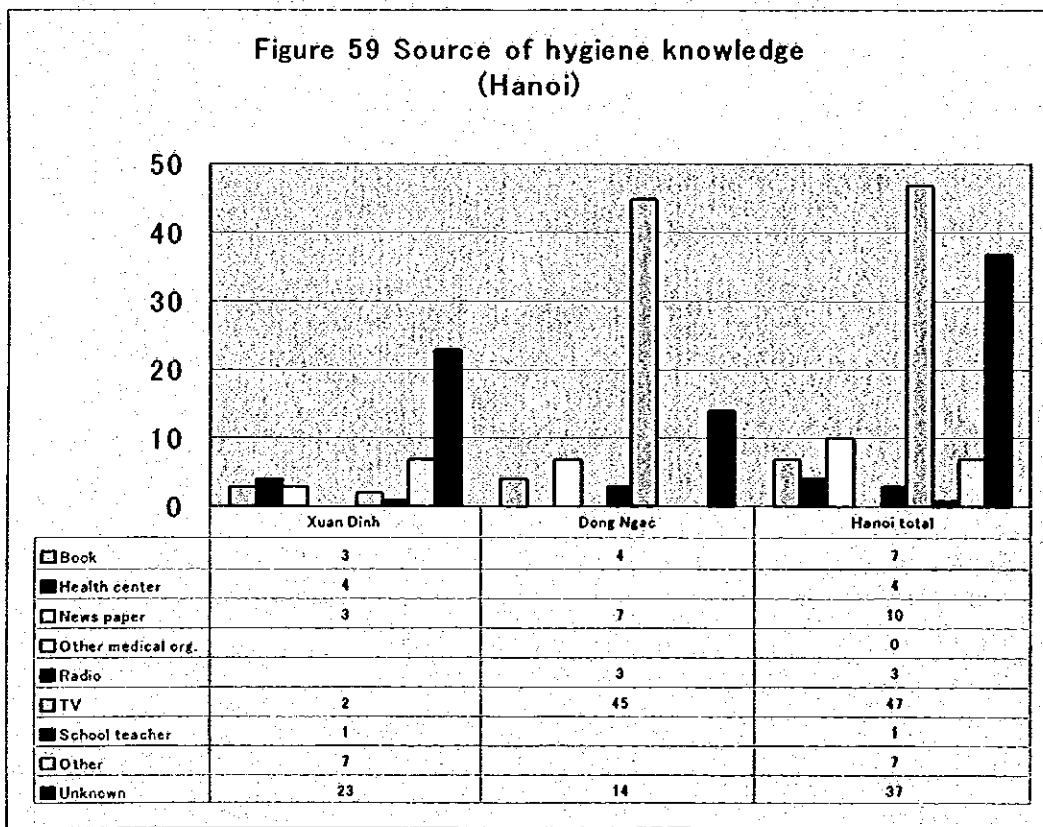
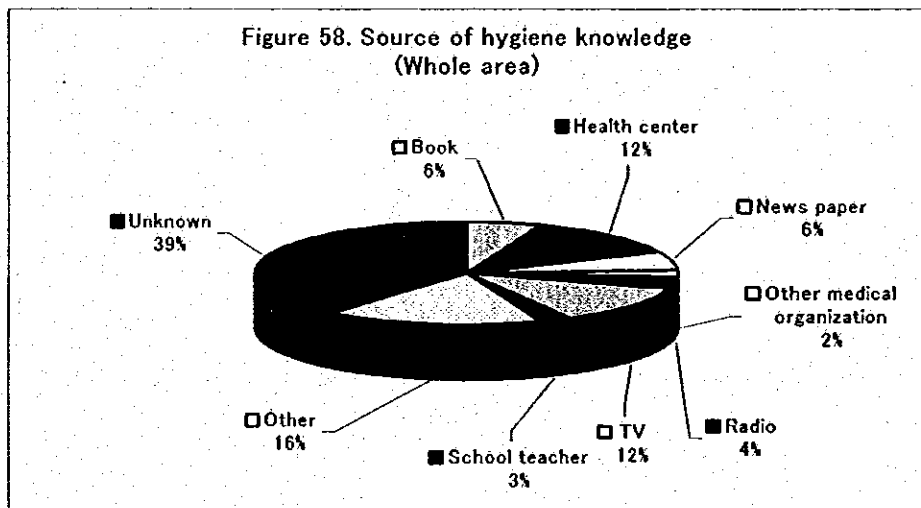


Figure 60. Source of hygiene knowledge (Ninh Binh)

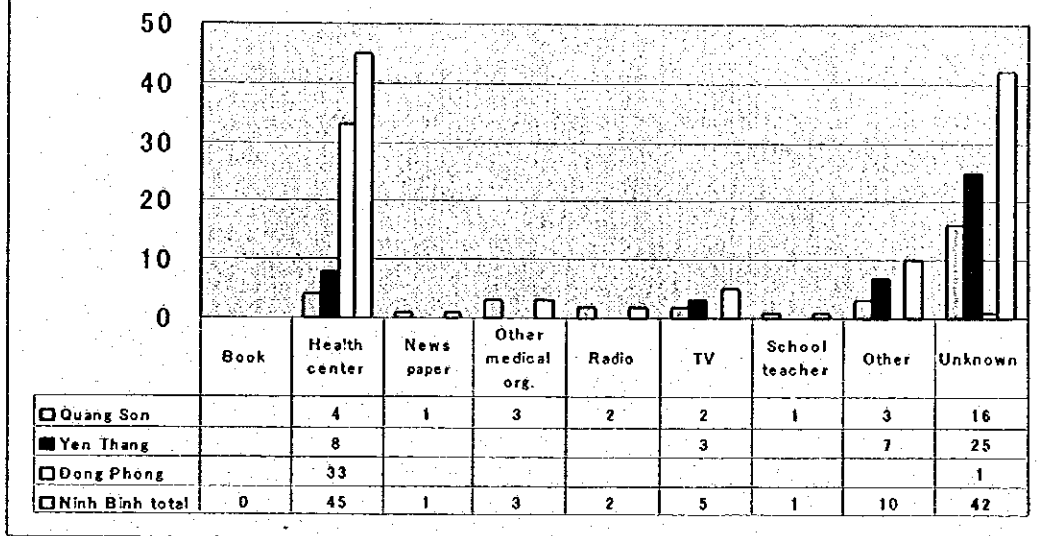


Figure 61. Source of hygiene knowledge(Thanh Hoa)

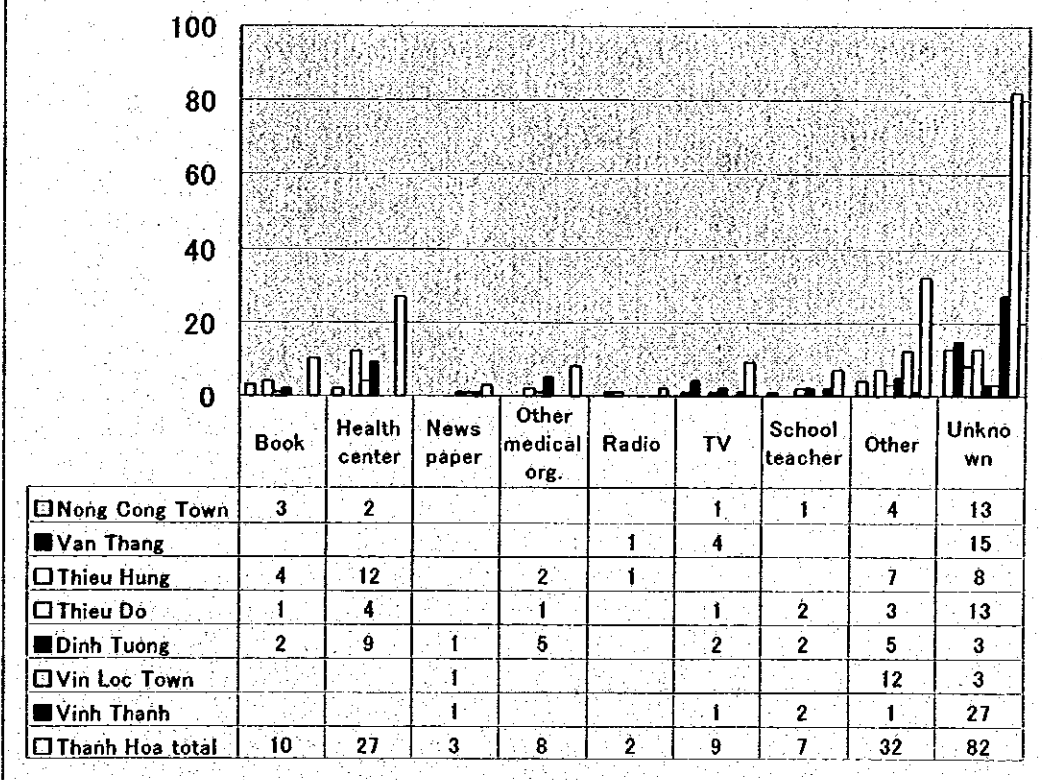


Figure 62. Source of hygiene knowledge (Ha Tinh)

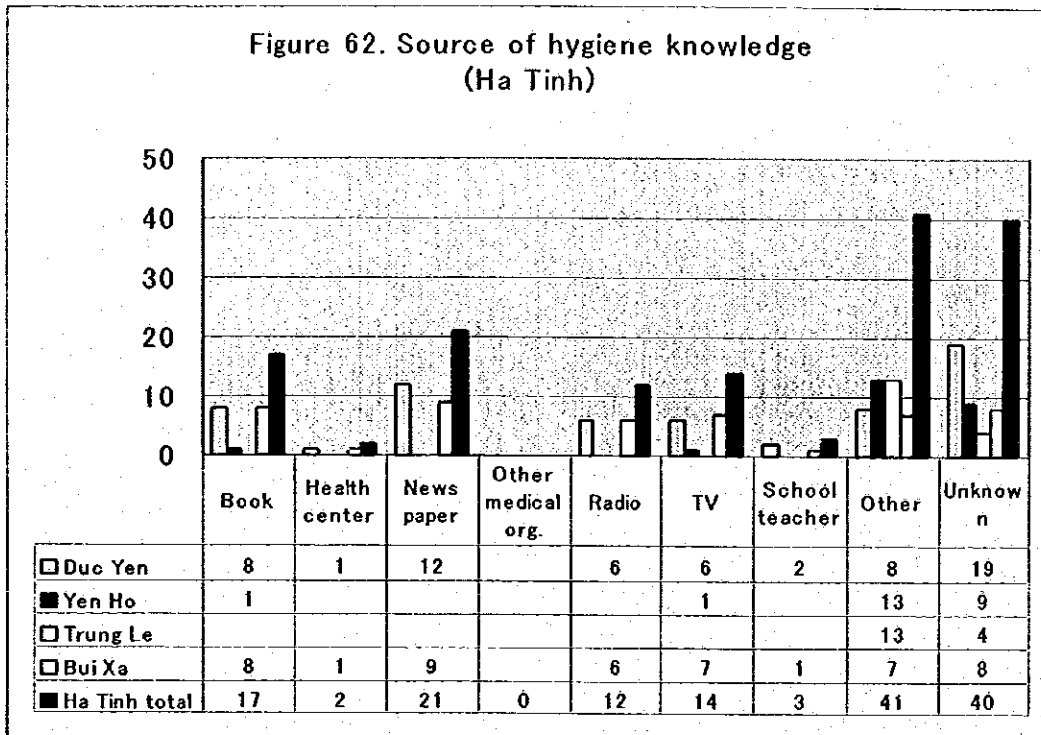
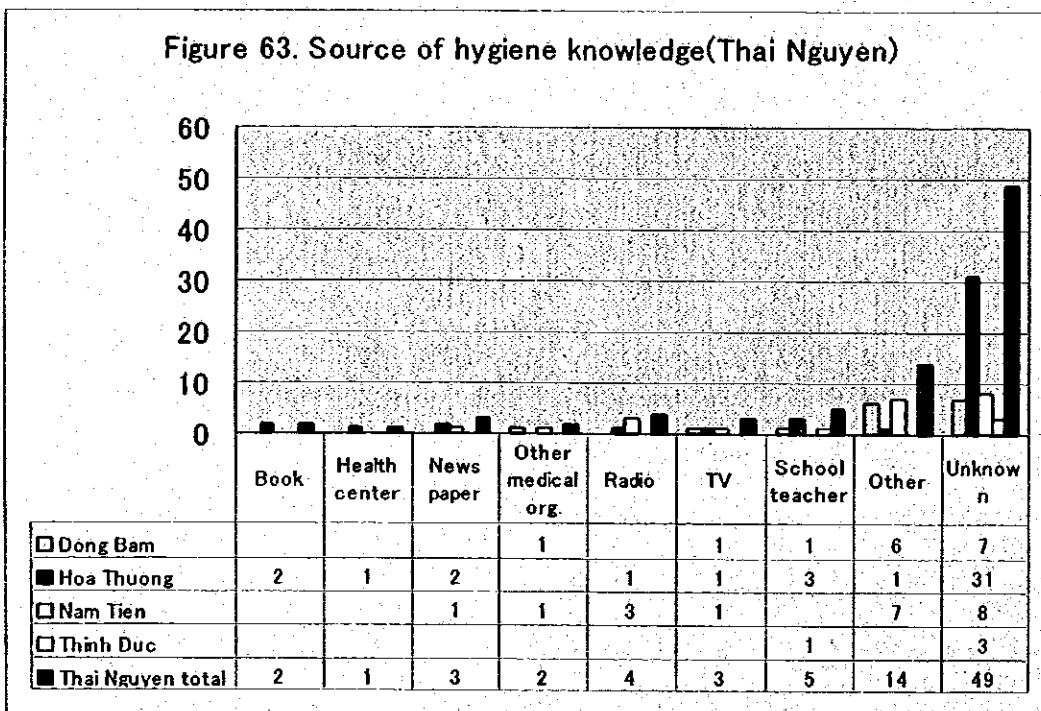
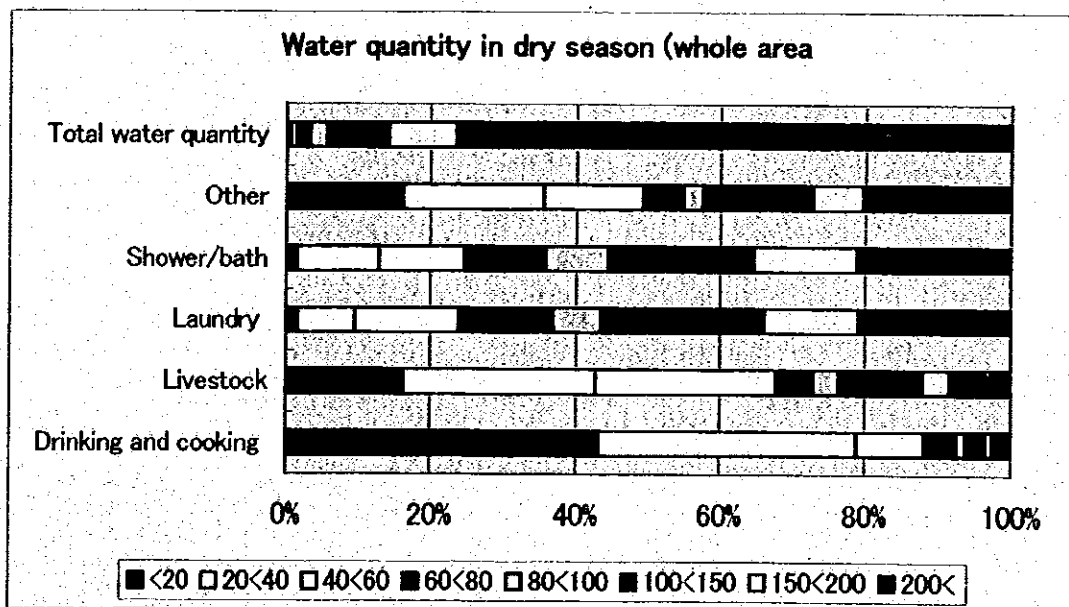
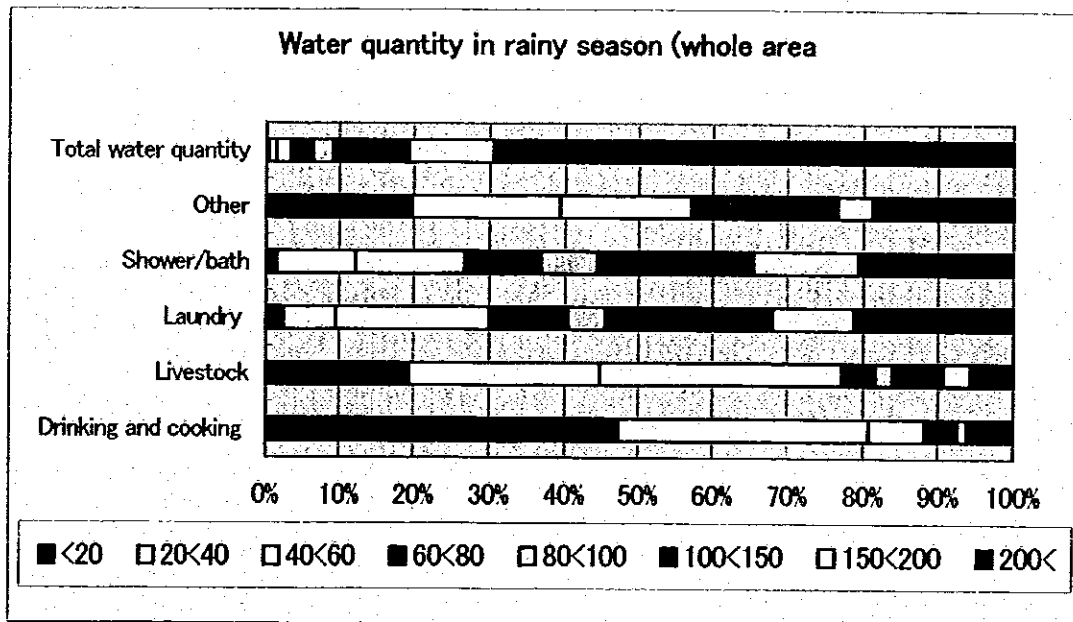


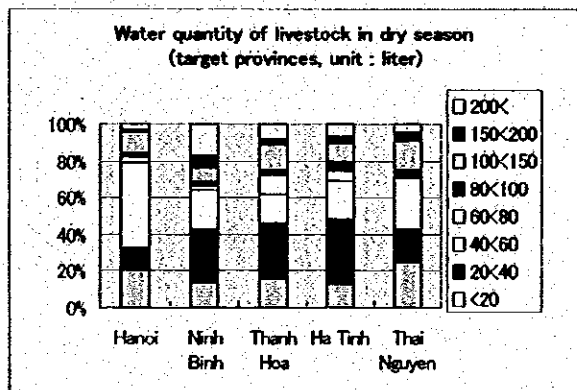
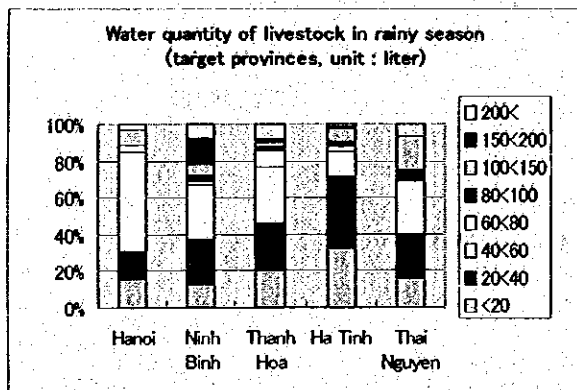
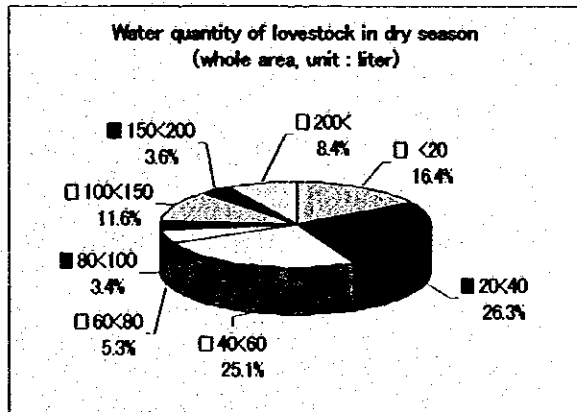
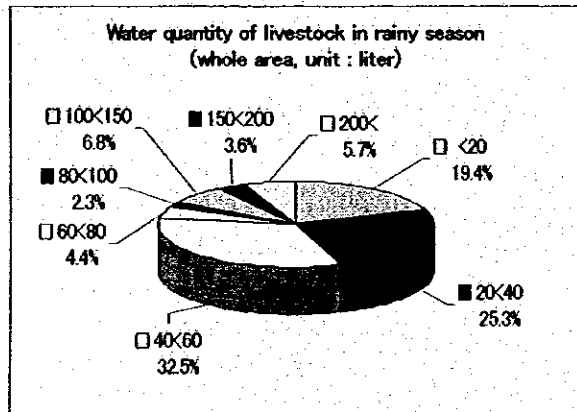
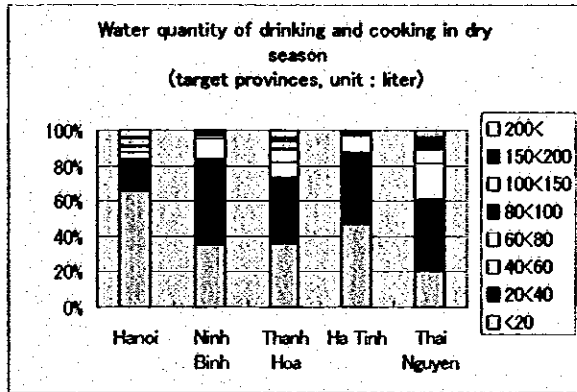
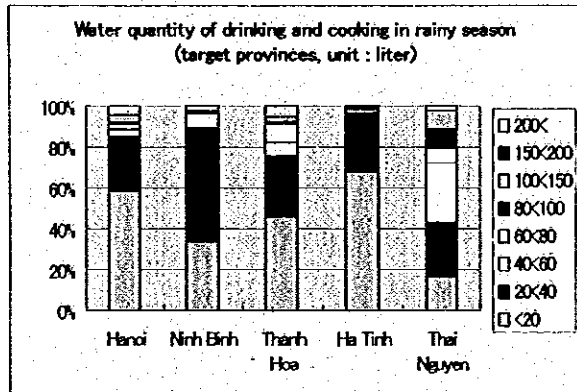
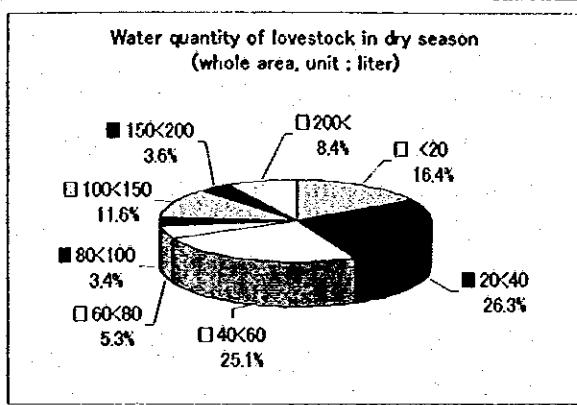
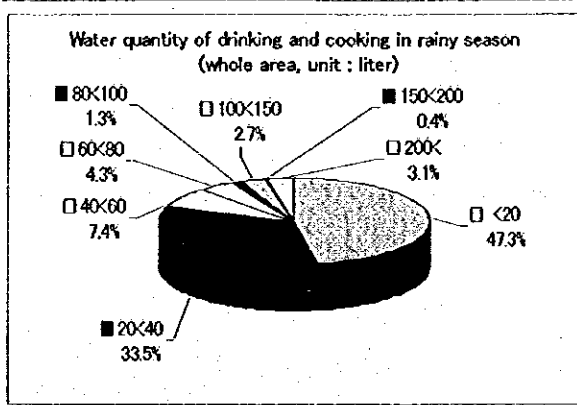
Figure 63. Source of hygiene knowledge (Thai Nguyen)

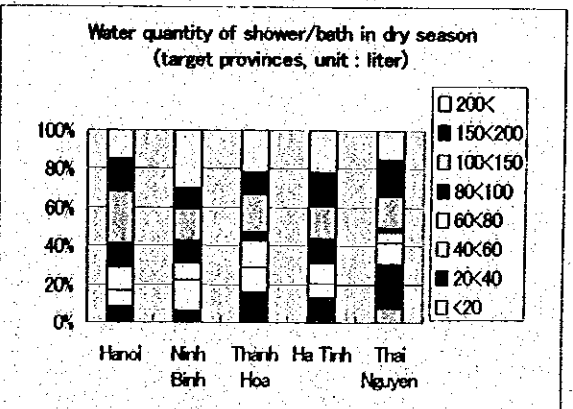
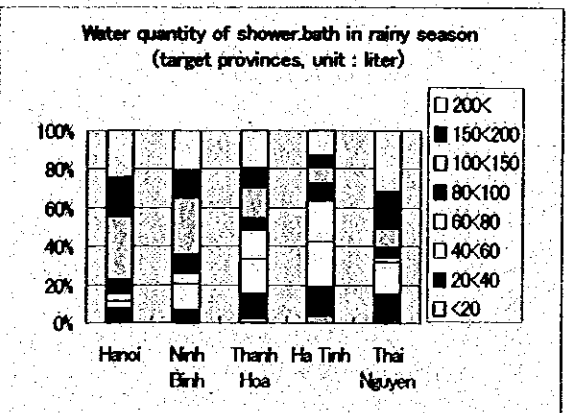
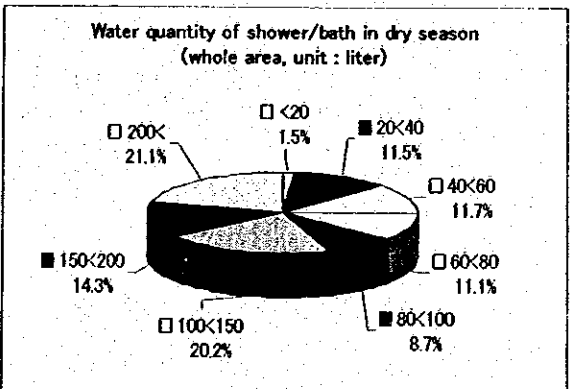
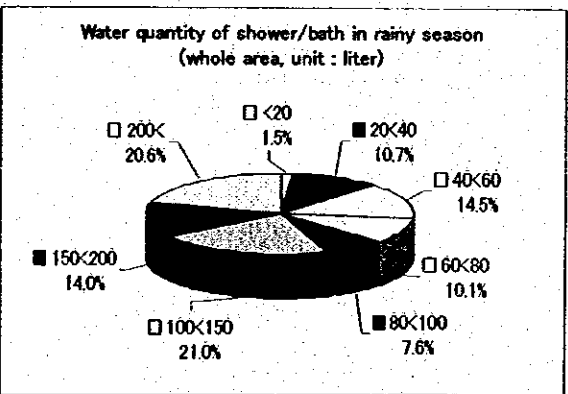
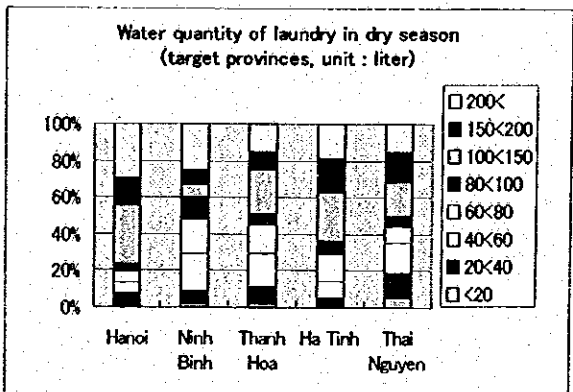
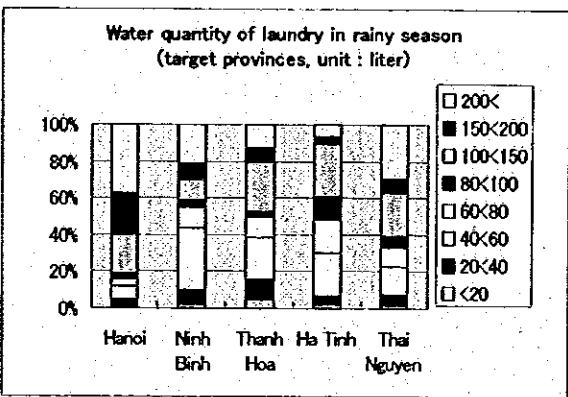
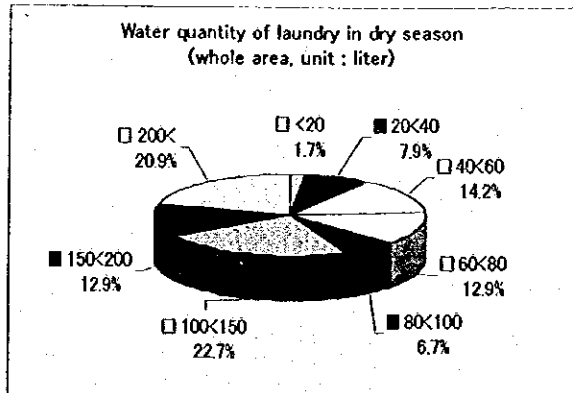
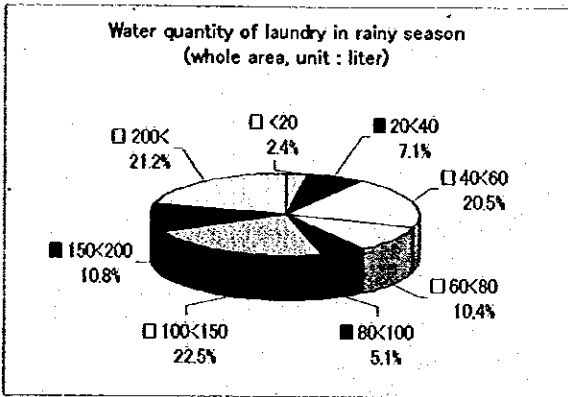


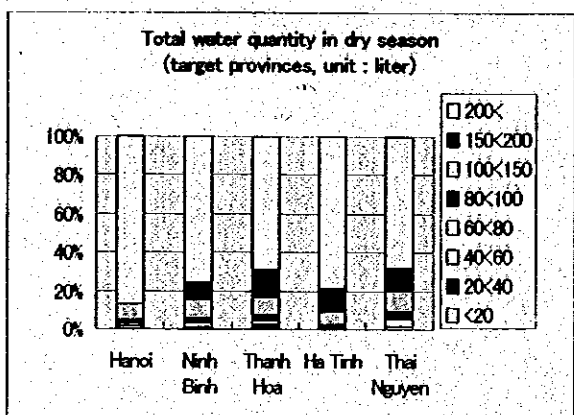
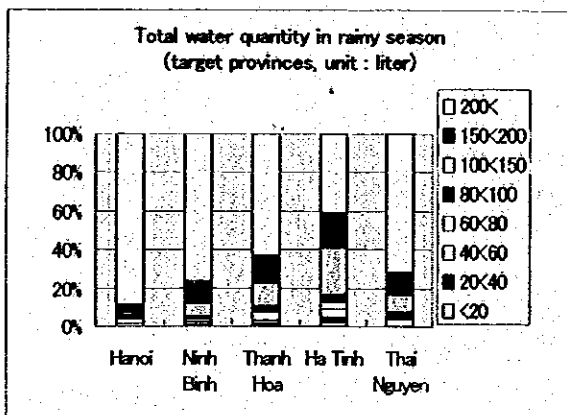
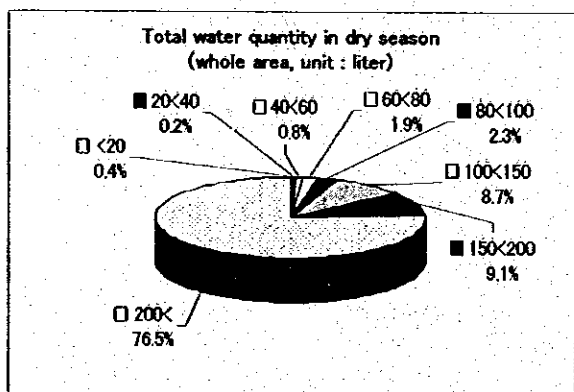
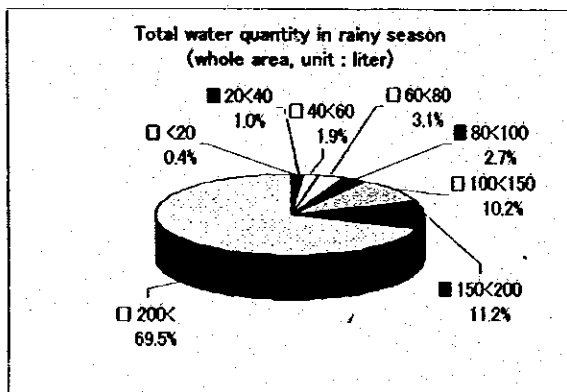
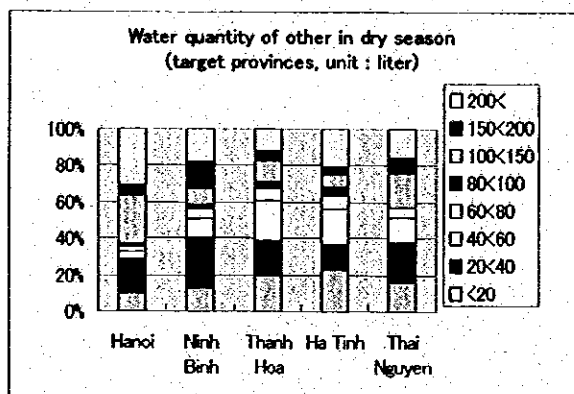
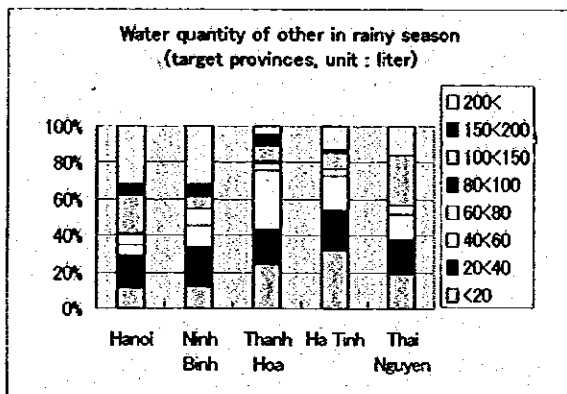
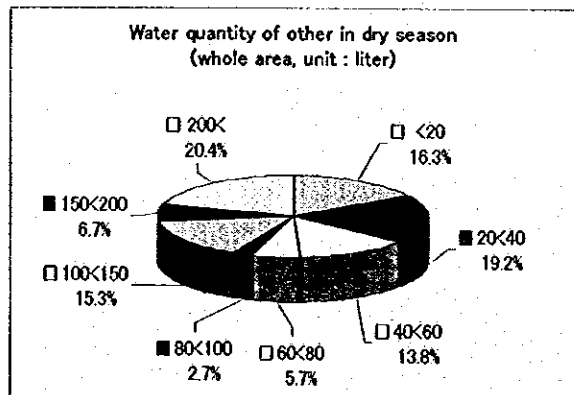
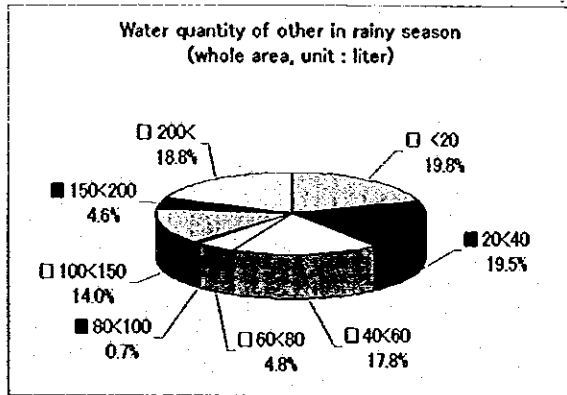
(12) comparison of water quantity

These below figures were compared the water quantity with the rainy and dry season in whole area. There is generally no difference at the rainy season and the dry season in a whole area, however, only water quantity for livestock increases at the dry season.



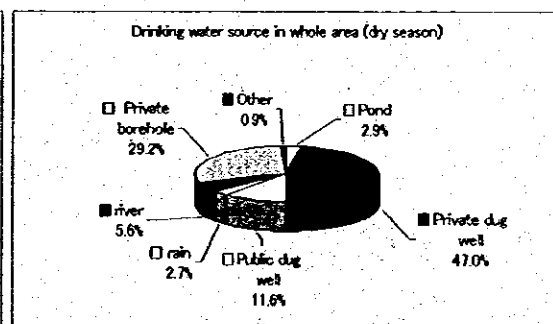
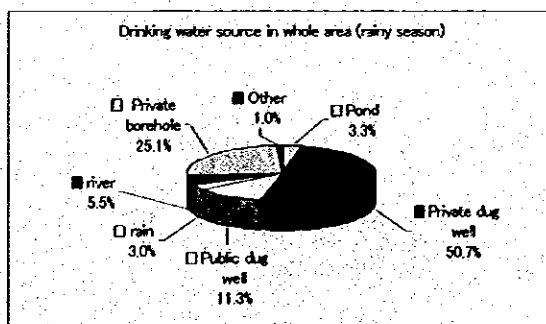
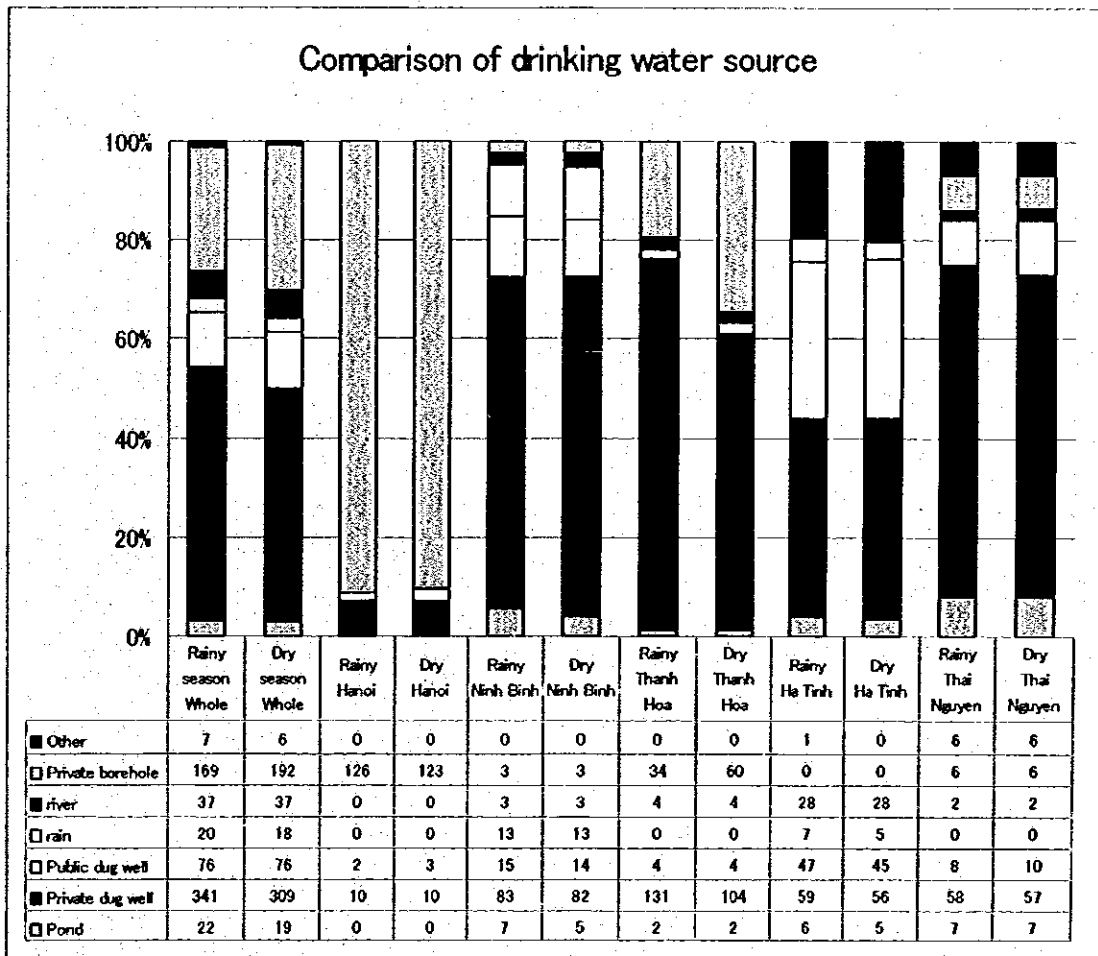






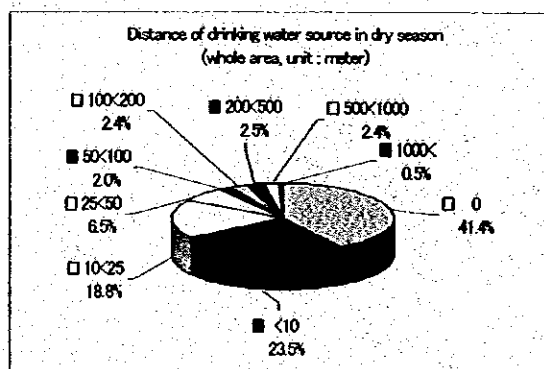
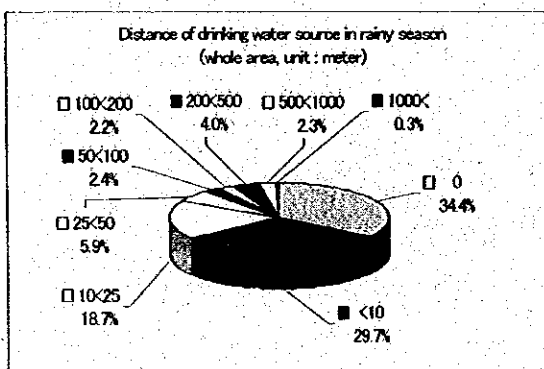
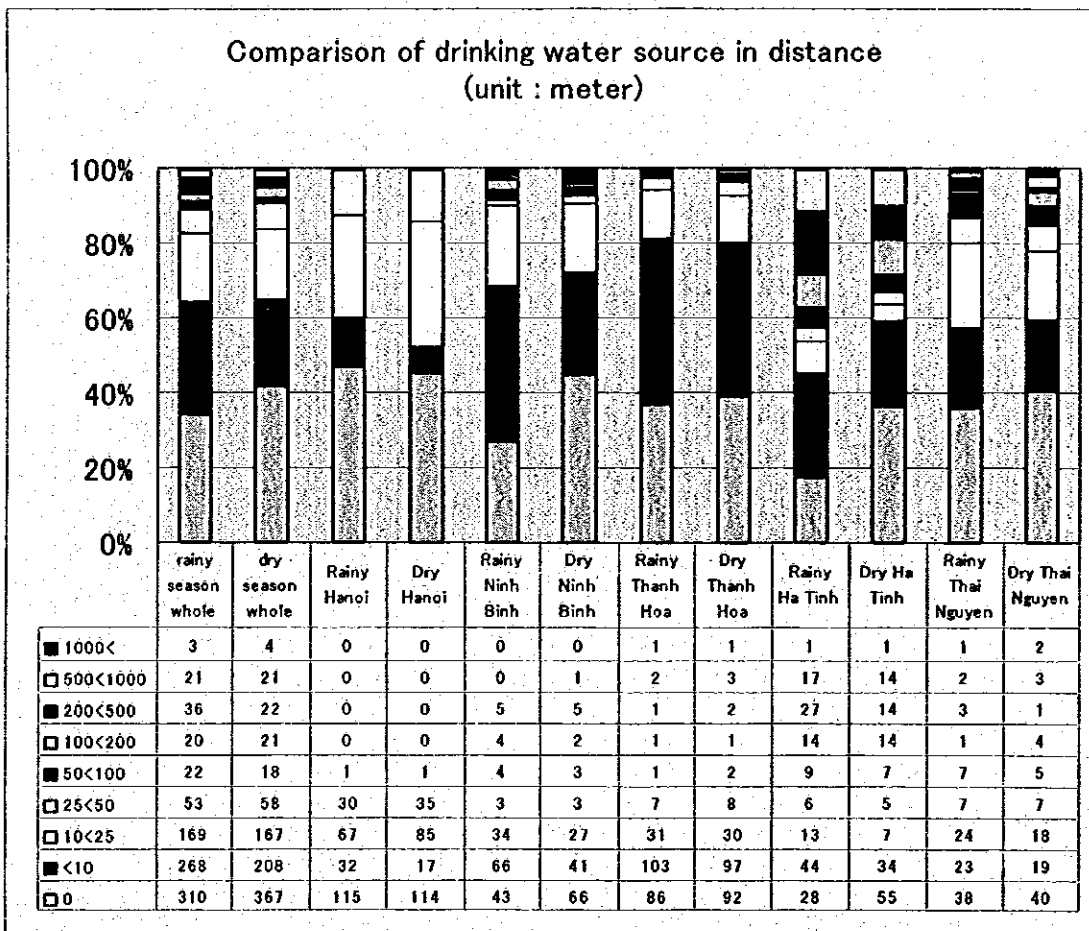
(13) Comparison of drinking water source

These below figures were compared the drinking water source with the rainy and dry season in whole area. These are generally no difference at the rainy and dry season in a whole area. As a characteristic result, inhabitants in Hanoi province are almost using private borehole and inhabitants in Ha Tinh province are using a lot of dug wells.



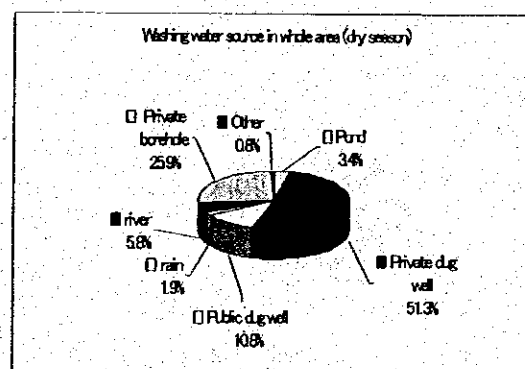
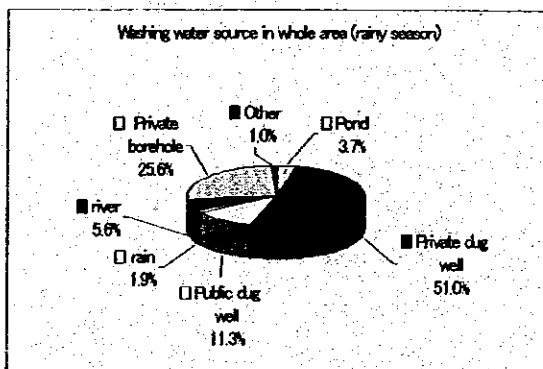
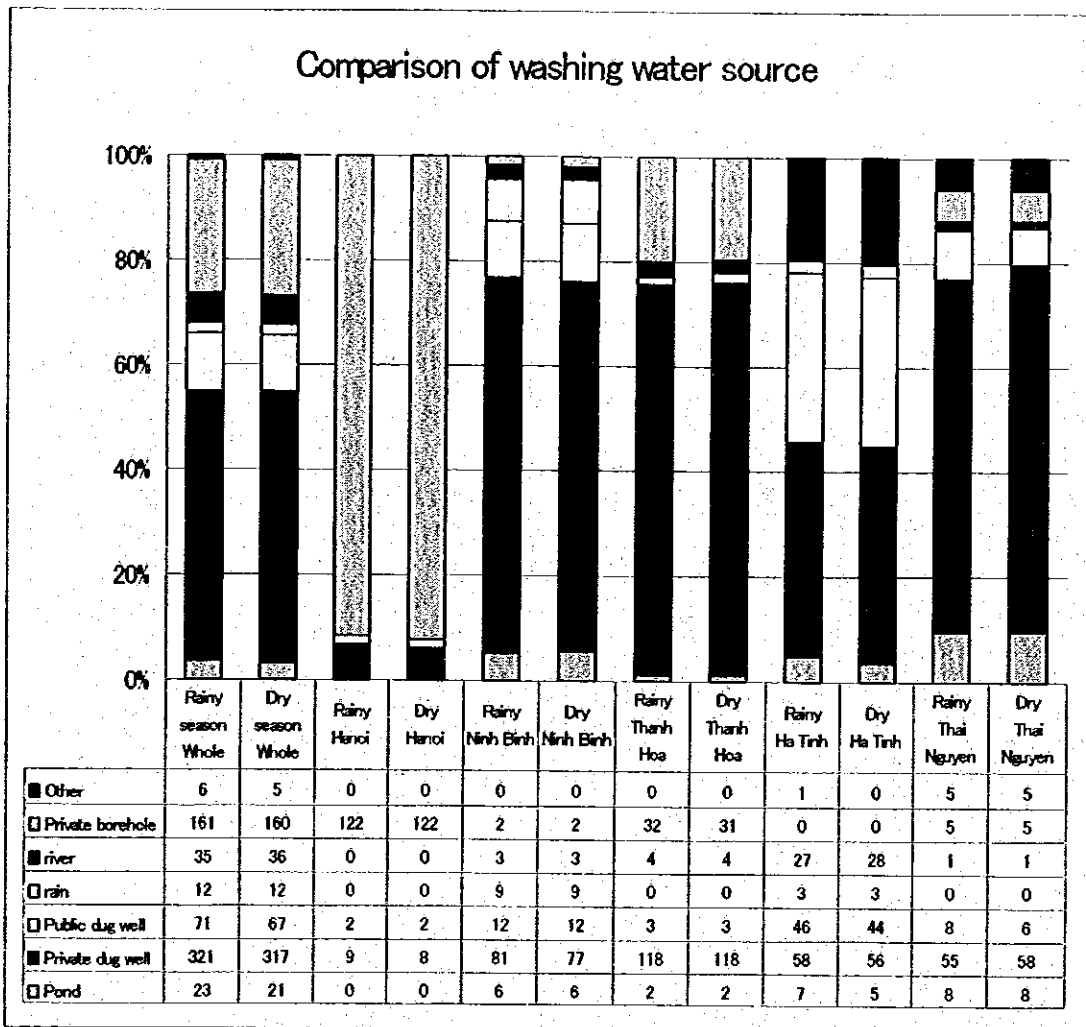
(14) Comparison of drinking water source in distance

These below figures were compared the drinking water source in distance with the rainy and dry season in whole area. These are generally no difference at the rainy and dry season in a whole area. As a characteristic result, it is understood that far distance to the water source in the Ha Tinh province.



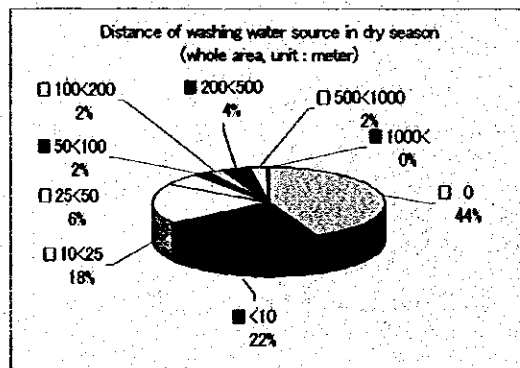
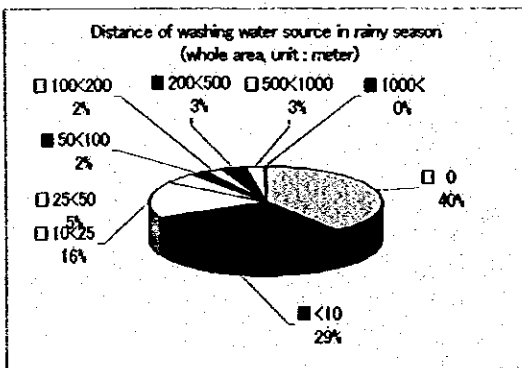
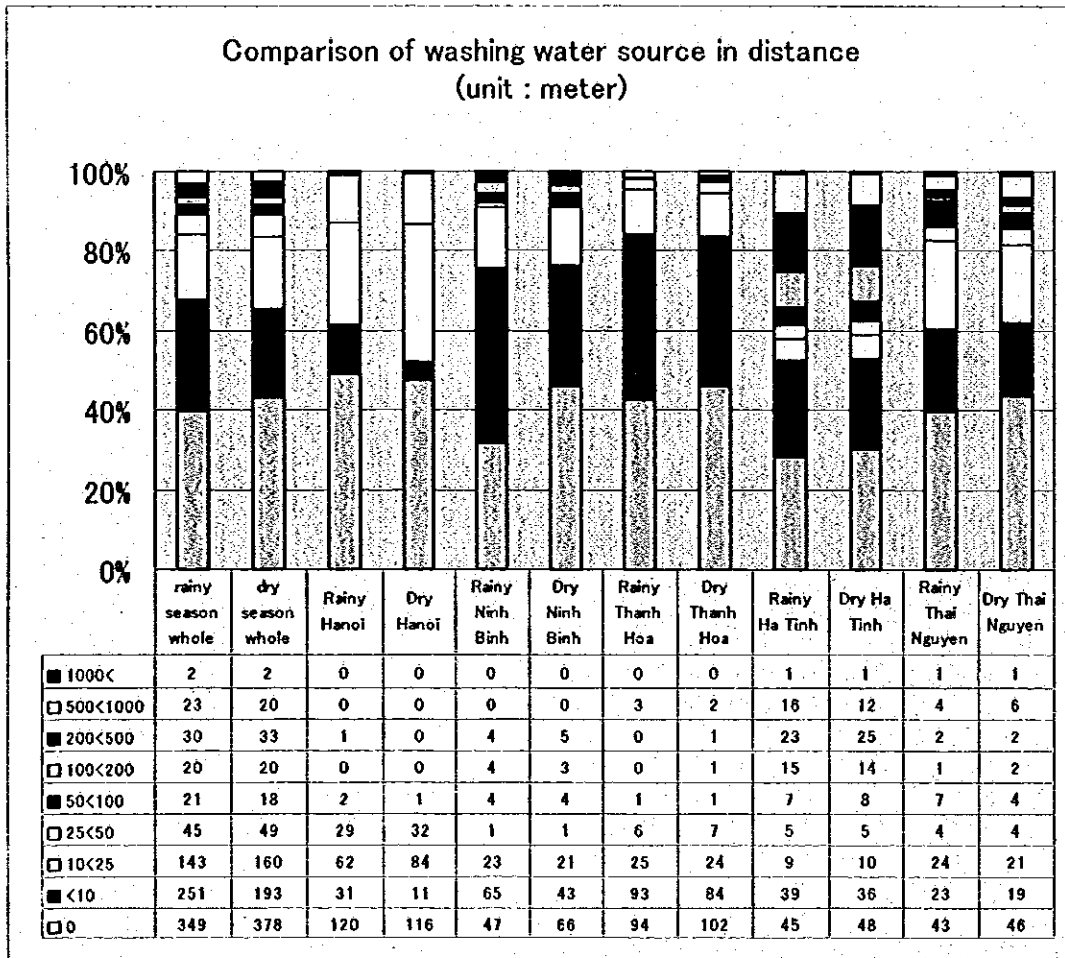
(15) Comparison of washing water source

These below figures were compared the washing water source with the rainy and dry season in whole area. These are generally no difference at the rainy and dry season in a whole area.



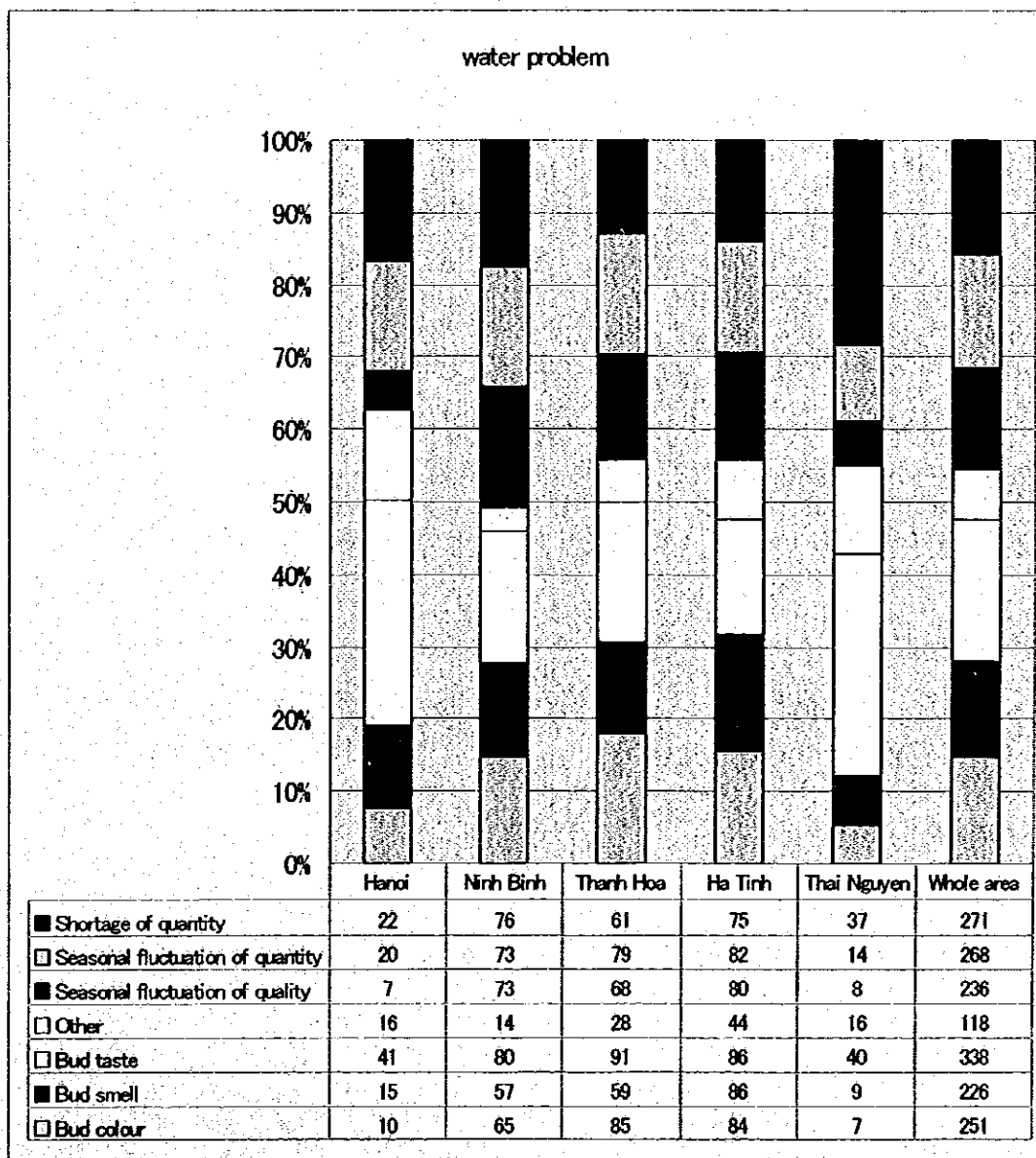
(16) Comparison of washing water source in distance

These below figures were compared the washing water source in distance with the rainy and dry season in whole area. These are generally no difference at the rainy and dry season in a whole area.



(17) Comparison of water problem

These below figures were compared the water problems with whole area. These are generally no difference at the rainy and dry season in a whole area. As a characteristic result, the shortage of water and a bud taste are remarkable in Thai Nguyen.



(18) Water quality for drinking and washing water

These below figures were compared the water quality for drinking and washing water with whole area.

