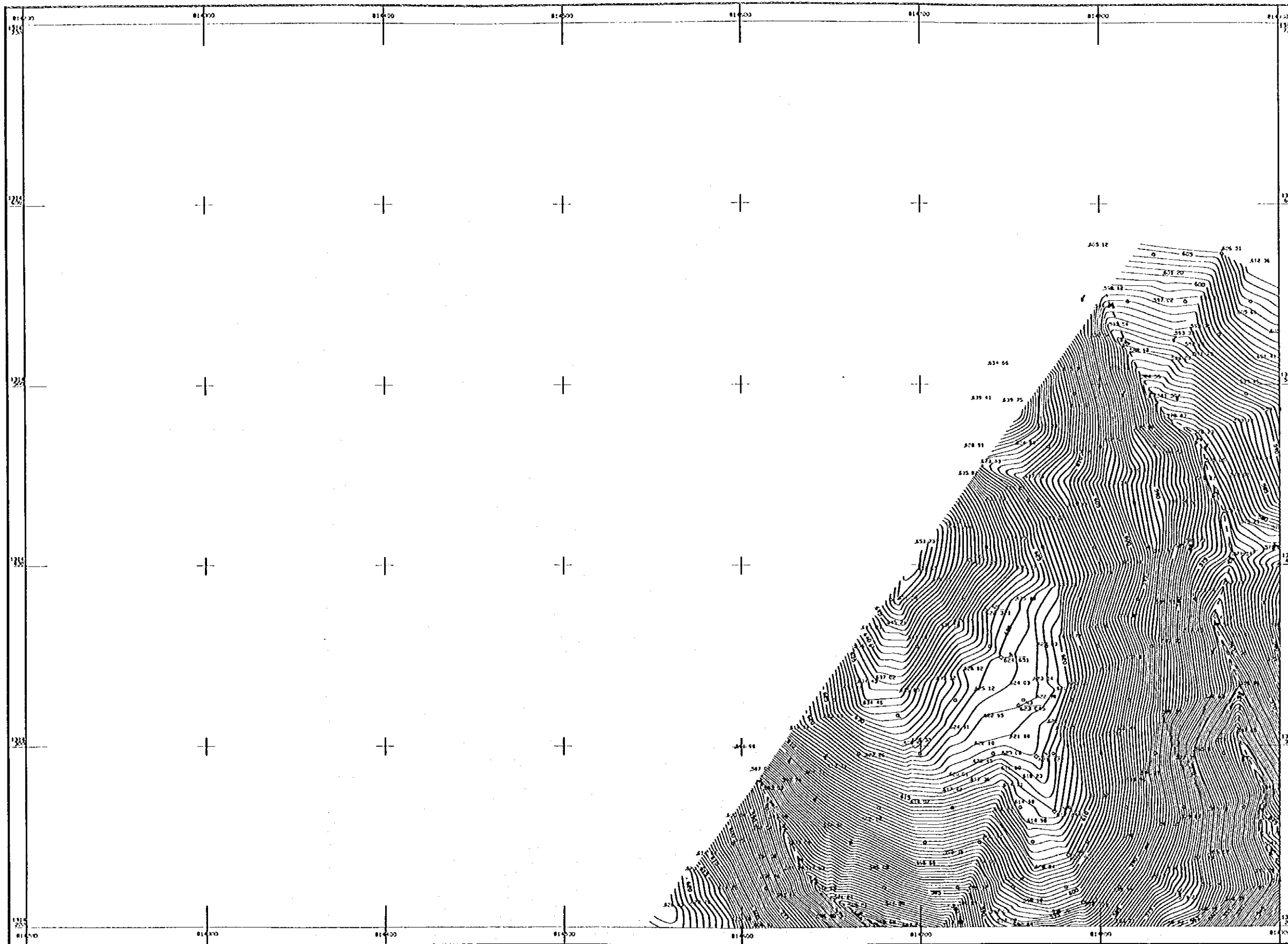


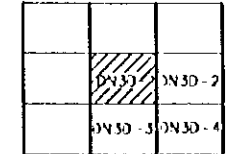
Attachment to Appendix B :
Topographic Survey Products

Attachment B1

**Topographic Maps at Dong Nai No.3 Dam Site
(Original Map Scale : 1/1,000)**



ADJOINING SHEETS



LEGEND

Control Point (IV order traverse)	A 12.01 559814
Control Point (1st grade traverse)	0 627333
Observation Station	4 5.2 514335
Cross-section Post	CS-1.06 517612
Spot Height	507.21
Bore Hole	4 822181 43414
Test Pit	4 820815 43254
House or Bldg	■
Artificial Slope	TTTTT
Footpath	— — — — —
Burrow	∩
Vegetation Boundary	— · — · —
Bush or Forest	o
Stream	~~~~~
Streamlet	~~~~~
Cleft	
Exposed Rock	▲▲▲
Water Edge Line	— — — — —

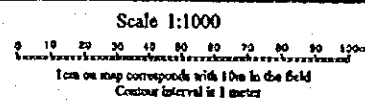
This map is made by ground survey

Coordinate system: Distance of ground elevation
and referred to Indian UTM 1950
Vertical Datum: Mean Sea Level of Ho Chi

DONG NAI NO.3 & NO.4 COMBINED
HYDROPOWER PROJECT (F/S)
SOCIALIST REPUBLIC OF VIET NAM
REPUBLIC OF VIET NAM
JAPAN INTERNATIONAL COOPERATION AGENCY
TOPOGRAPHIC MAP
OF DONG NAI NO.3 DAM SITE

Date: September 15, 1995 Drawing No. DM 1603.06.19

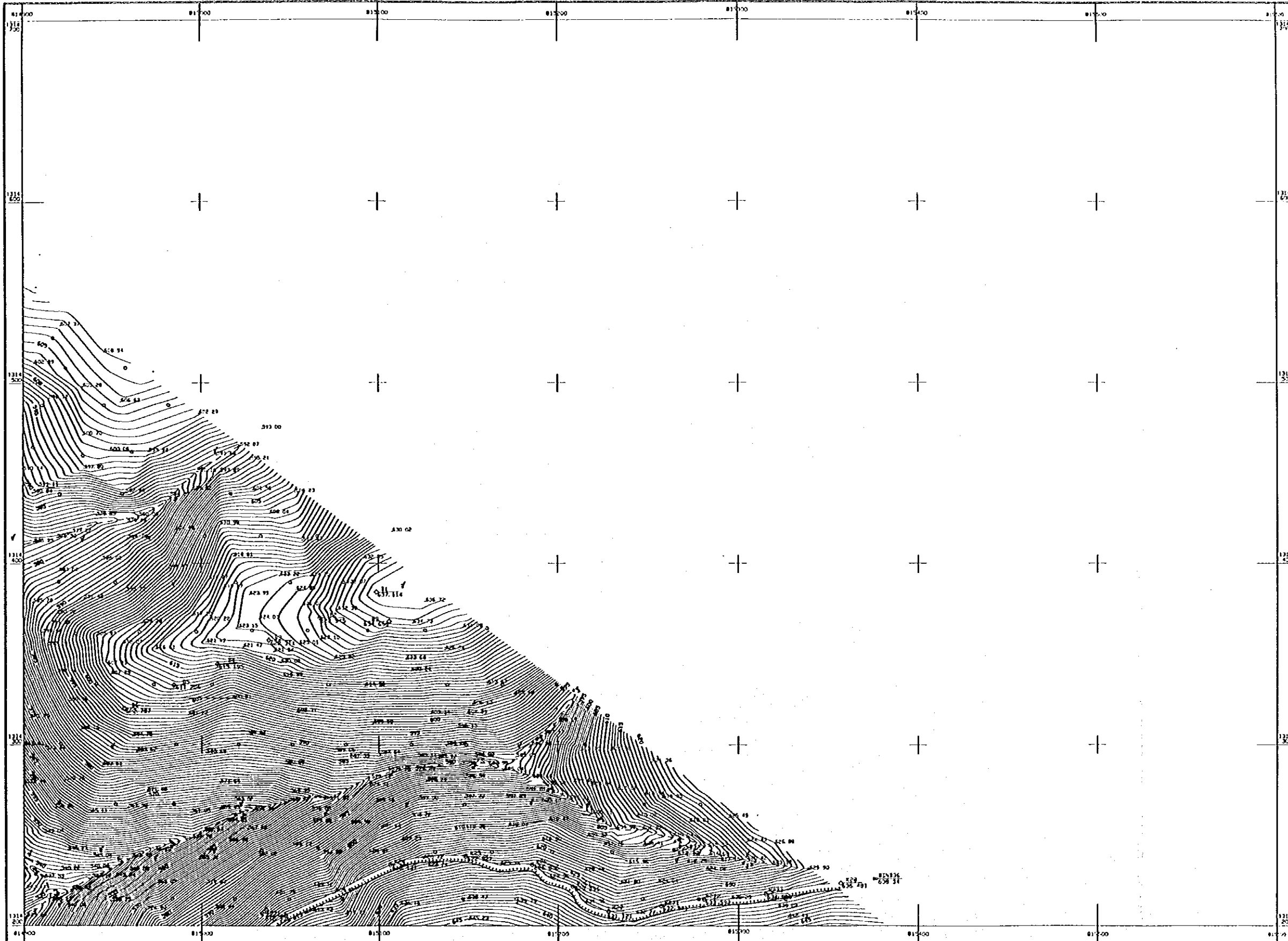
- Surveyed by : Tran Anh Quoc
- Checked by : Nguyen Thien Dat



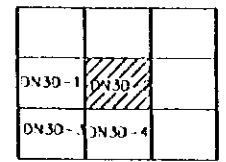
DONG NAI No.3 DAM SITE

DONG NAI NO 3 & NO 4 COMBINED HYDROPOWER PROJECT

DN3D-2



ADJOINING SHEETS



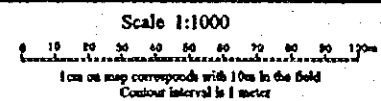
LEGEND

Control Point (IV order traverse)	• 13-01
Control Point (1st grade traverse)	• 13-02
Observation Station	• 13-03
Cross-section Post	• 13-04
Spot Height	• 13-05
Bore Hole	• 13-06
Test Pit	• 13-07
House or Building	■
Artificial Slope	
Footpath	==
Barbed	— — —
Vegetation Boundary	- - -
Bush or Forest	o
Stream	~~~~~
Streamlet	- - - - -
Cliff	
Exposed Rock	▲▲▲
Water Edge Line	— — —

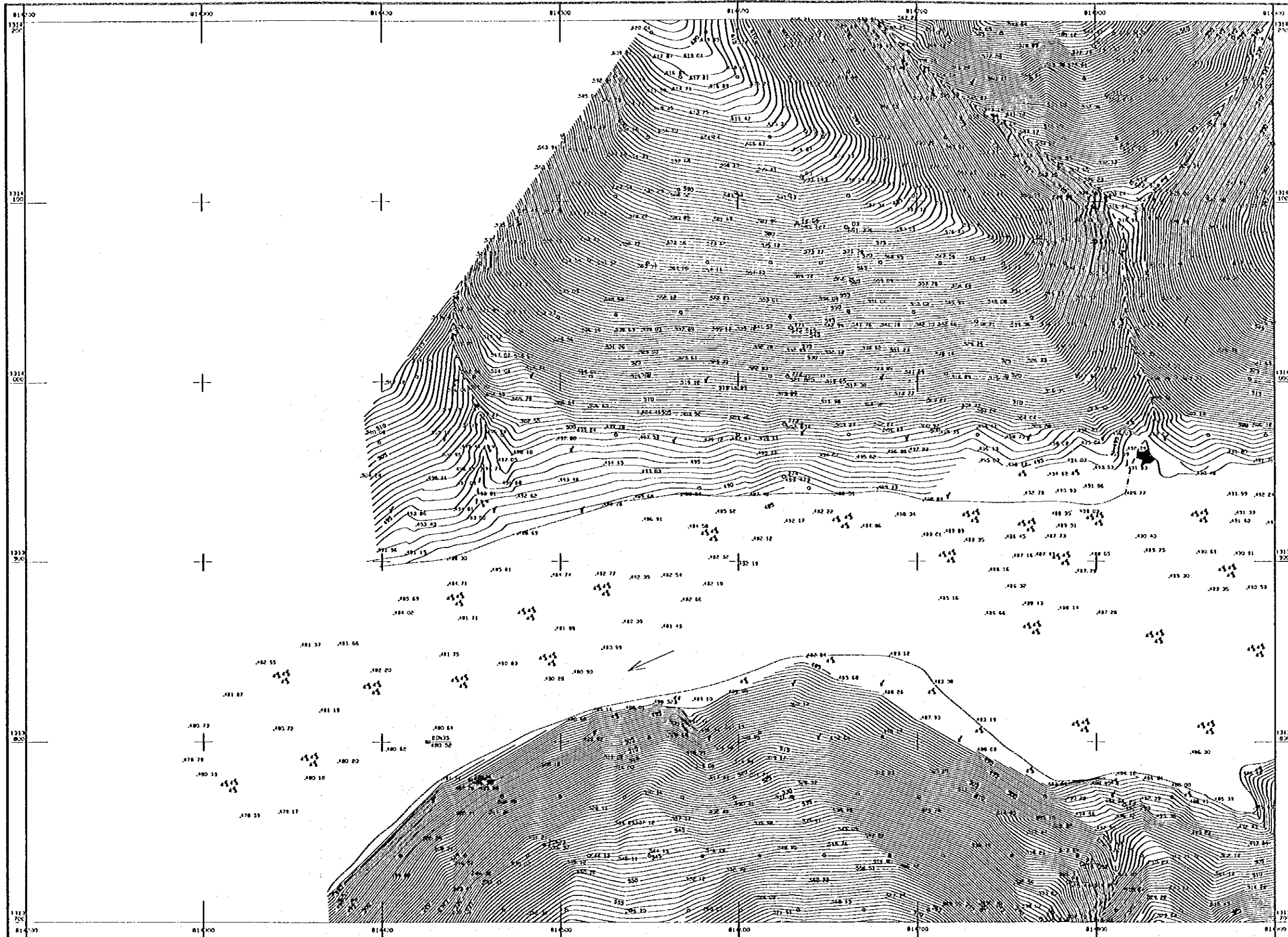
This map is made by ground survey
 Coordinate system: Distance at ground elevation and refers to Indian UTM 1959
 Vertical Datum: Mean Sea Level of Ho Tan

DONG NAI NO.3 & NO.4 COMBINED HYDROPOWER PROJECT (F/S)
 SOCIALIST REPUBLIC OF VIET NAM
 ELECTRICITY OF VIET NAM
 JAPAN INTERNATIONAL COOPERATION AGENCY
TOPOGRAPHIC MAP
OF DONG NAI NO.3 DAM SITE
 Date: September 22, 1995 Drawing No. TM-DNS-175-175

- Surveyed by : Tran Anh Quoc
 - Checked by : Nguyen Thi Dat



DN30-3



ADJOINING SHEETS

	DN30-1	DN30-2
	DN30-3	DN30-4
	DN30-5	DN30-6

LEGEND

Control Point (IV order traverse)	▲ 1/1000
Control Point (5th grade traverse)	● 1/2000
Observation Station	○ 1/1000
Cross-section Post	⊕ 1/1000
Spot Height	• 1/1000
Bore Hole	⊙ 1/1000
Test Pit	⊖ 1/1000
House or Bldg	■
Artificial Slope	
Footpath	-----
Bamboo	∟
Vegetation Boundary	---
Bush or Forest	o
Stream	~~~~~
Streamlet	-----
Cuff	
Exposed Rock	▲▲▲
Water Edge Line	-----

This map is made by ground survey
 Coordinate system: Distance at ground elevation and referred to Indian UTM 1950
 Vertical Datum: Mean Sea Level at Ho Tien

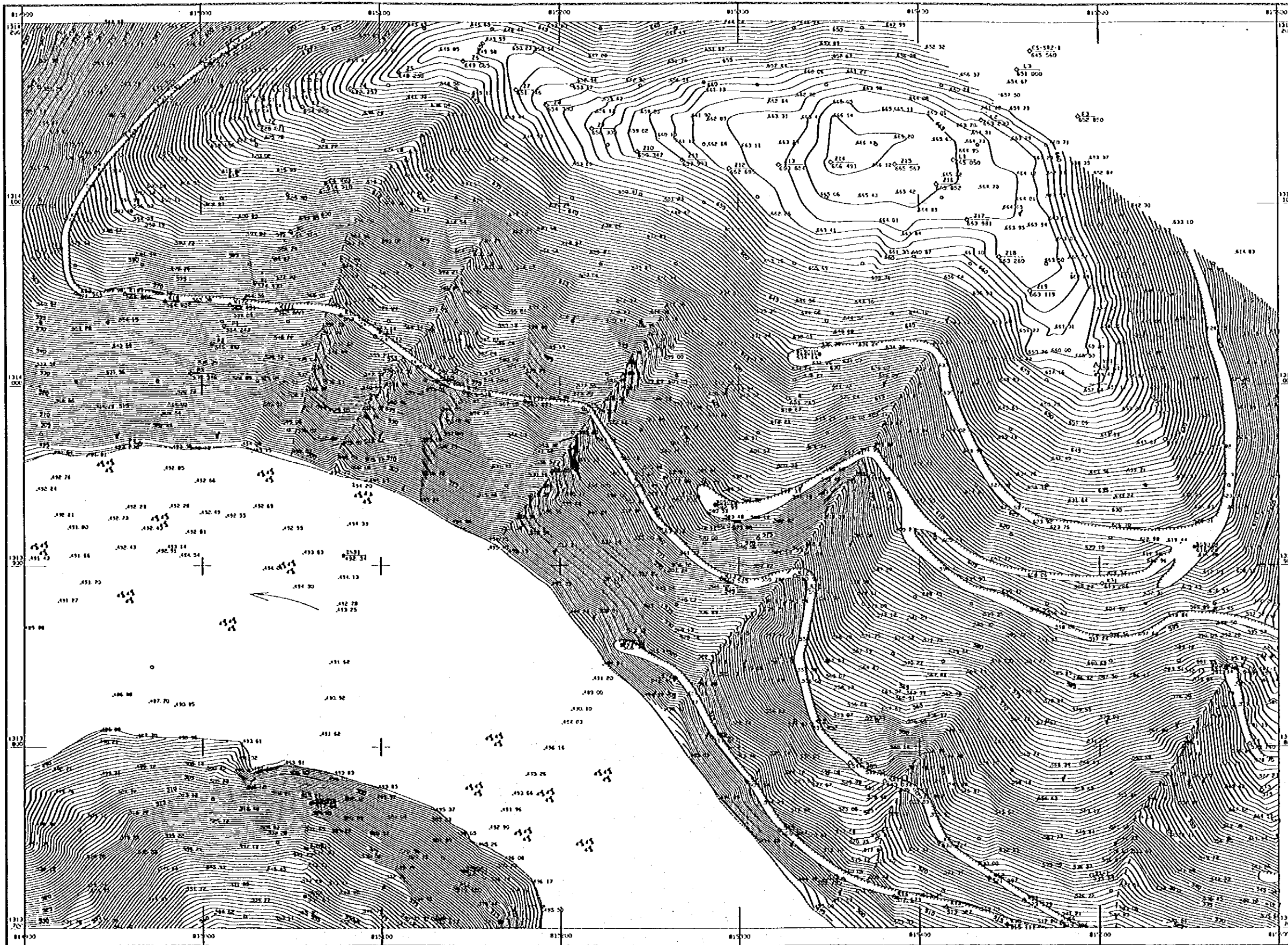
DONG NAI NO.3 & NO.4 COMBINED HYDROPOWER PROJECT (F/S)
 SOCIALIST REPUBLIC OF VIET NAM
 ELECTRICITY OF VIET NAM
 JAPAN INTERNATIONAL COOPERATION AGENCY

**TOPOGRAPHIC MAP
 OF DONG NAI NO.3 DAM SITE**

Date: September 15, 1995 Drawing No. T&E/F/03/55

- Surveyed by : Tran Anh Quoc
 - Checked by : Nguyen Tan Dat

Scale 1:1000
 0 10 20 30 40 50 60 70 80 90 100m
 1cm on map corresponds with 10m in the field
 Contour Interval is 1 meter



ADJOINING SHEETS

DN30-1	DN30-2
DN30-3	DN30-5
DN30-6	DN30-8

LEGEND

Control Point (IV order traverse)	A 14-81 451814
Control Point (1st grade traverse)	451814 451815
Observation Station	451815 451816
Cross-section Post	451816 451817
Spot Height	451817
Bare Hole	451818 451819
Test Pit	451819 451820
House or Building	451820
Artificial Slope	451821
Footpath	451822
Bamboo	451823
Vegetation Boundary	451824
Bush or Forest	451825
Stream	451826
Streamlet	451827
Cleft	451828
Exposed Rock	451829
Water Edge line	451830

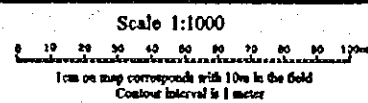
This map is made by ground survey
 Coordinate system: Distance of ground elevation
 and referred to Indian UTM 1950
 Vertical Datum: Mean Sea Level of Ho Chi

**DONG NAI NO.3 & NO.4 COMBINED
 HYDROPOWER PROJECT (P/S)**
 SOCIALIST REPUBLIC OF VIET NAM
 ELECTRICITY OF VIET NAM
 JAPAN INTERNATIONAL COOPERATION AGENCY

**TOPOGRAPHIC MAP
 OF DONG NAI NO.3 DAM SITE**

Date: September 25, 1999 Drawing No. TM DN30-4/99

- Surveyed by : Tran Anh Quoc
 - Checked by : Nguyen Phan Dat



DONO NAI No.3 DAM SITE

DONG NAI NO 3 & NO 4 COMBINED HYDROPOWER PROJECT

DN30-6

ADJOINING SHEETS

DN30-2		
DN30-4		
DN30-7	DN30-6	DN30-8

LEGEND

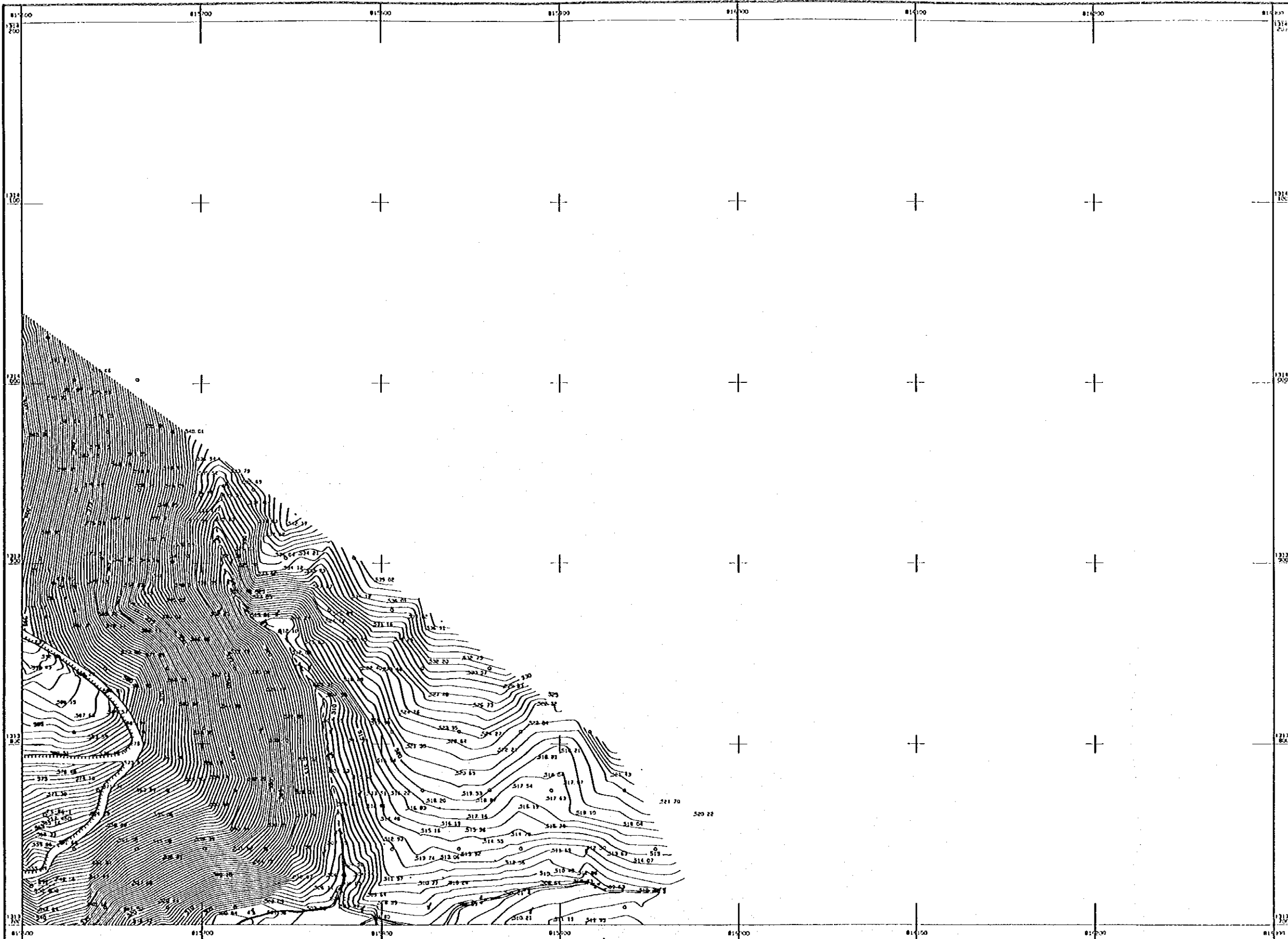
Control Point (IV order traverse)	▲ 1314.00
Control Point (1st grade traverse)	● 1313.50
Observation Station	○ 1313.00
Cross-section Post	⊙ 1312.50
Spot Height	• 1312.00
Bore Hole	⊙ 1311.50
Test Pit	⊙ 1311.00
House or Building	■
Artificial Slope	
Footpath	====
Bamboo	∟
Vegetation Boundary	○
Bush or Forest	o
Stream	~~~~~
Streamlet	- - - -
Cave	⌒
Exposed Rock	⬢
Water Edge Line	—

This map is made by ground survey
 Coordinate system: Distance of ground elevation and referred to Indon UTM 1950
 Vertical Datum: Mean Sea Level at Ho Tan

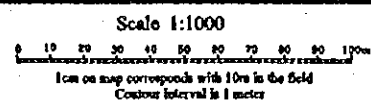
DONG NAI NO.3 & NO.4 COMBINED HYDROPOWER PROJECT (F/S)
 SOCIALIST REPUBLIC OF VIET NAM
 ELECTRICITY OF VIET NAM
 JAPAN INTERNATIONAL COOPERATION AGENCY

TOPOGRAPHIC MAP OF DONG NAI NO.3 DAM SITE

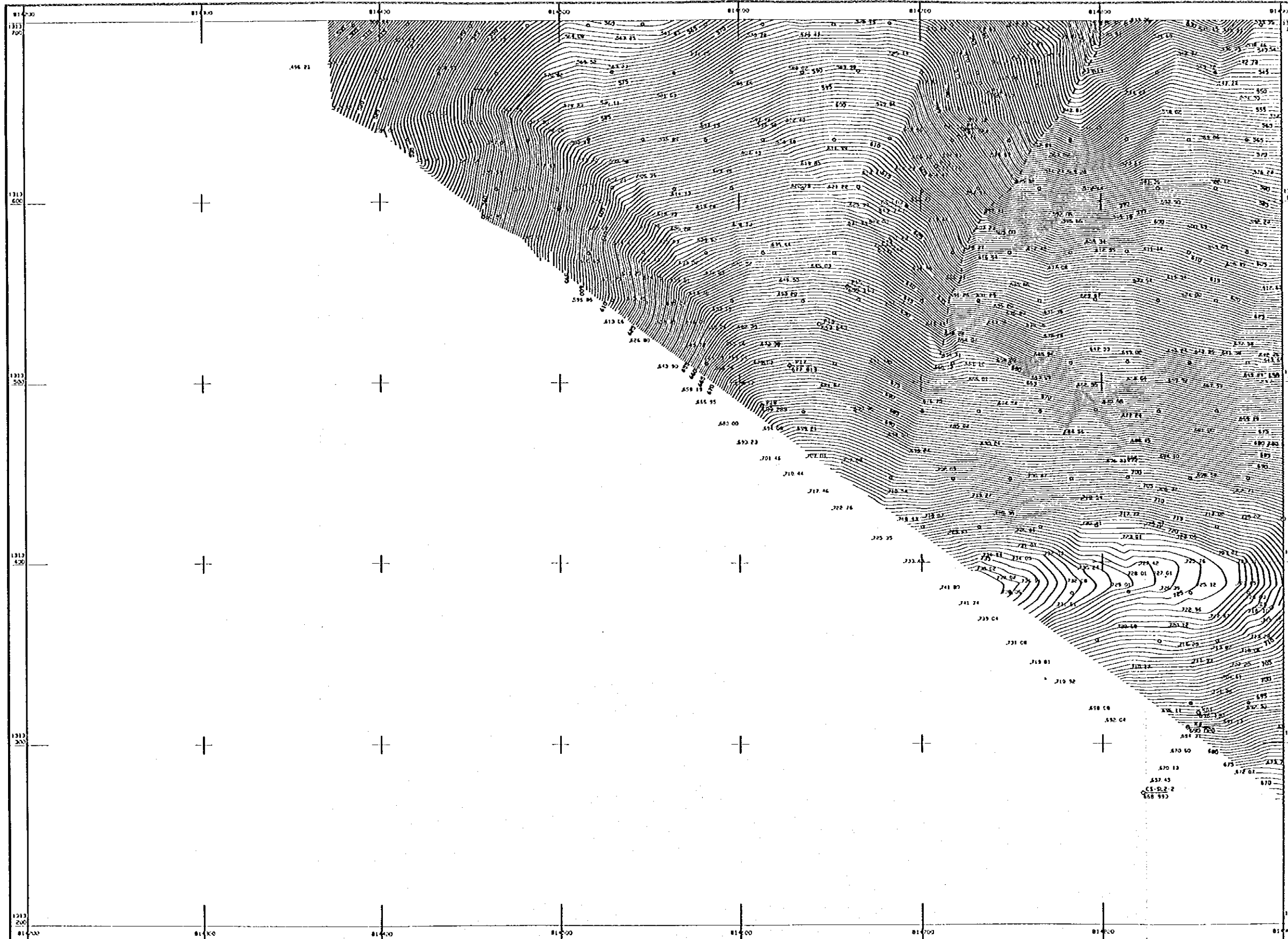
Date: September 25, 1990 Drawing No. TM 1903-75-59



- Surveyed by : Tran Anh Quoc
 - Checked by : Nguyen Tan Dat



DN30-B



ADJOINING SHEETS

	DN30-3	DN30-4
	DN30-6	DN30-7
		DN30-9

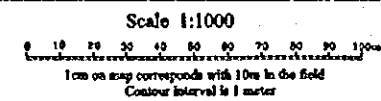
LEGEND

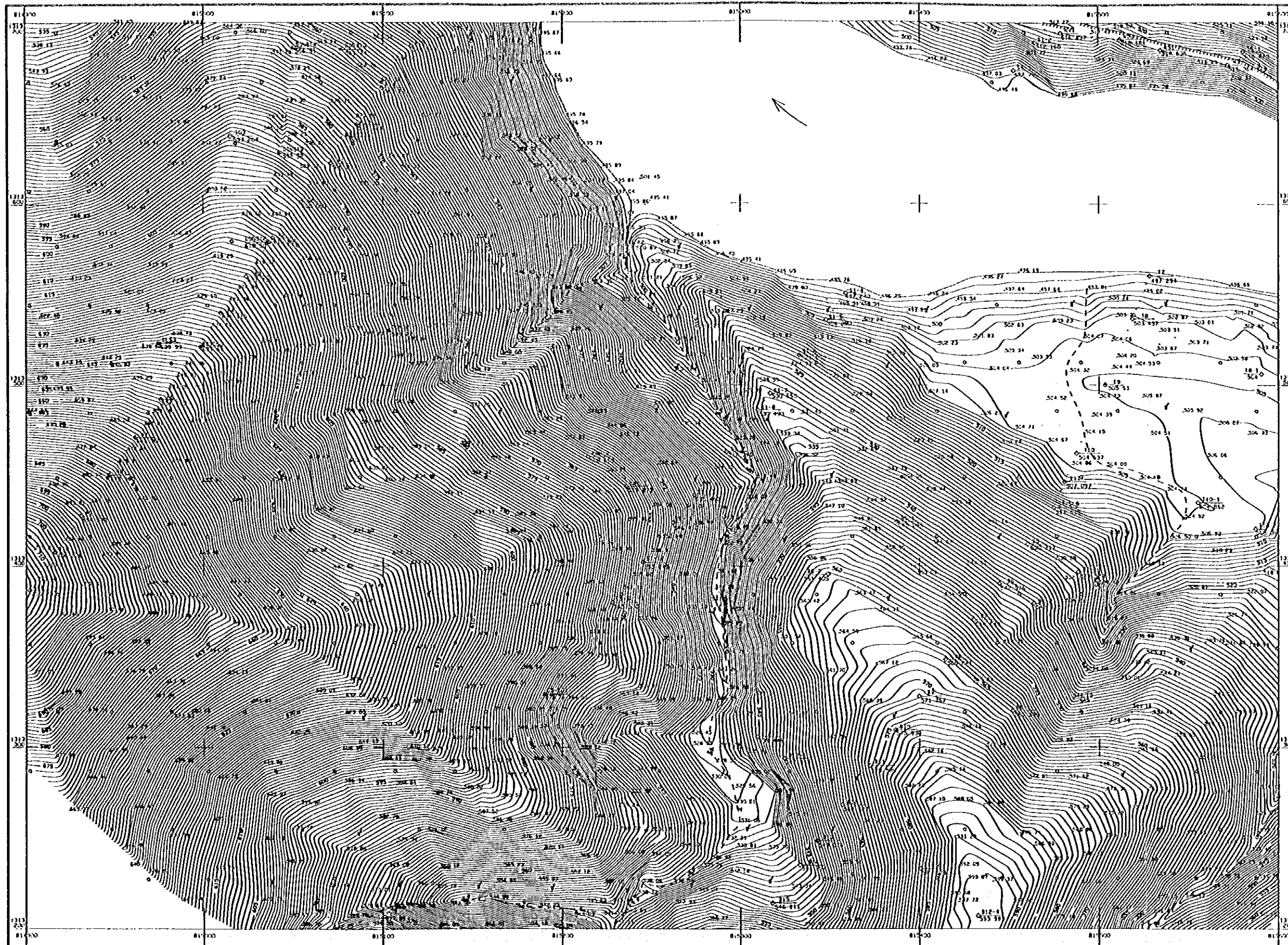
Control Point (IV order traverse)	A 133114
Control Point (1st grade traverse)	B 133114
Observation Station	C 133114
Cross-section Post	D 133114
Spot Height	E 133114
Bore Hole	F 133114
Test Pit	G 133114
House or Building	H 133114
Artificial Slope	I 133114
Footpath	J 133114
Bamboo	K 133114
Vegetation Boundary	L 133114
Bush or Forest	M 133114
Stream	N 133114
Streamlet	O 133114
Cliff	P 133114
Exposed Rock	Q 133114
Water Edge Line	R 133114

This map is made by ground survey
 Coordinate system: Distances of ground elevation and referred to Indian UTM 1950
 Vertical Datum: Mean Sea Level of Ho Ten

DONG NAI NO.3 & NO.4 COMBINED HYDROPOWER PROJECT (F/S)
 SOCIALIST REPUBLIC OF VIET NAM
 ELECTRICITY OF VIET NAM
 JAPAN INTERNATIONAL COOPERATION AGENCY
TOPOGRAPHIC MAP
 OF DONG NAI NO.3 DAM SITE
 Date September 15, 1998 Drawing No. TM DN30 B5 69

- Surveyed by 1 Tran Anh Quoc
 - Checked by 2 Nguyen Tam Dat





ADJOINING SHEETS

DN30-6	DN30-7	DN30-8
DN30-6	DN30-7	DN30-8
	DN30-9	

LEGEND

Control Point (IV order traverse)	A 12-01
Control Point (1st grade traverse)	B 12-02
Observation Station	C 12-03
Cross section Post	D 12-04
Spot Height	E 12-05
Bore Hole	F 12-06
Test Pit	G 12-07
House or Building	H 12-08
Artificial Slope	I 12-09
Footpath	J 12-10
Bamboo	K 12-11
Vegetation Boundary	L 12-12
Bush or Forest	M 12-13
Stream	N 12-14
Streamlet	O 12-15
Cliff	P 12-16
Exposed Rock	Q 12-17
Water Edge Line	R 12-18

This map is made by ground survey
 Coordinate system: Distance of ground elevation and referred to Indian UTM 1950
 Vertical Datum: Mean Sea Level of Ho ties

DONG NAI NO.3 & NO.4 COMBINED HYDROPOWER PROJECT (P/S)
 SOCIALIST REPUBLIC OF VIET NAM
 ELECTRICITY OF VIET NAM
 JAPAN INTERNATIONAL COOPERATION AGENCY
TOPOGRAPHIC MAP
OF DONG NAI NO.3 DAM SITE
 Date: September 25, 1998 Drawing No. TND 030 DS 15

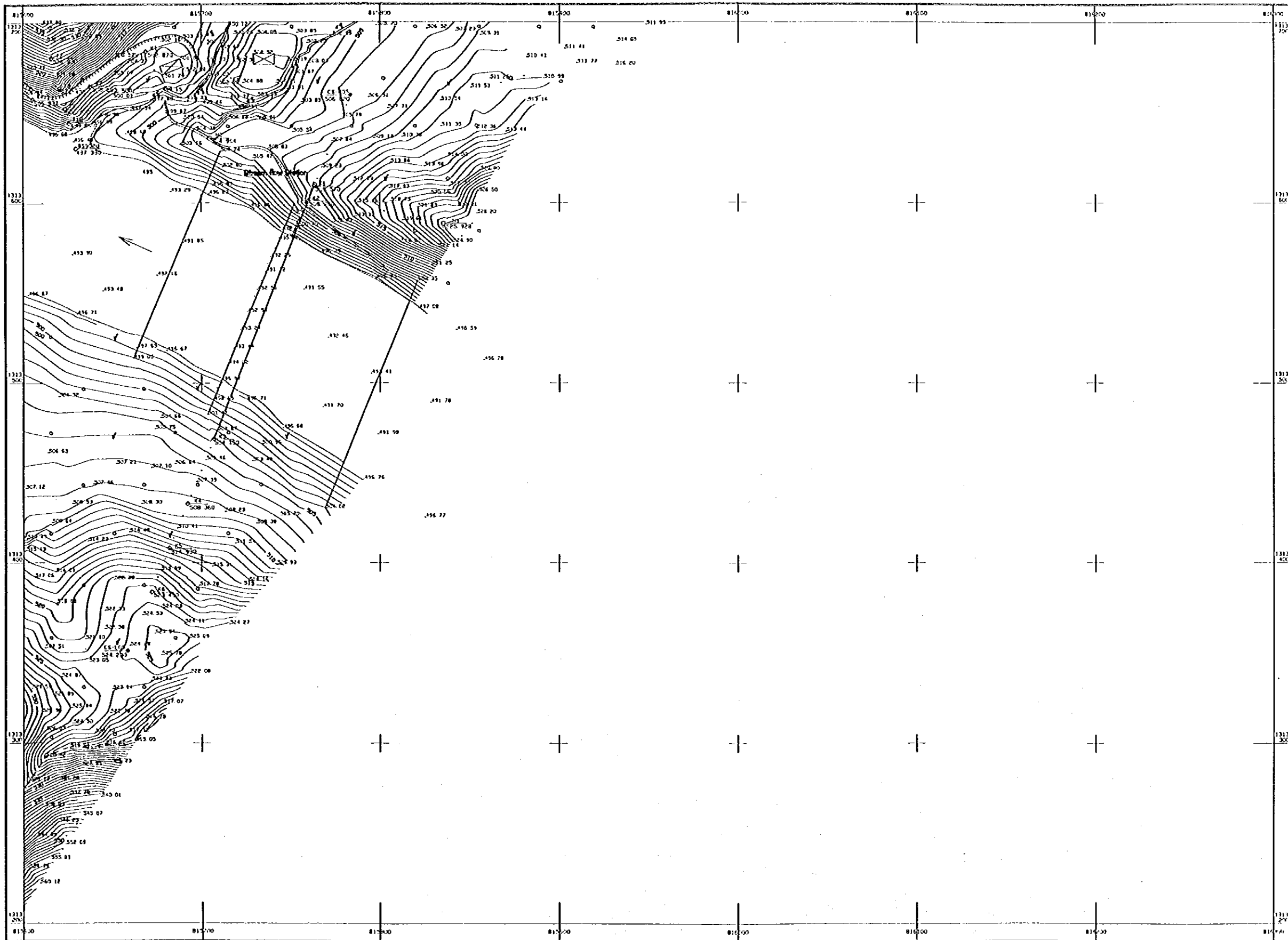
- Surveyed by : Tran Anh Quan
 - Checked by : Nguyen Thi Dai

Scale 1:1000
 0 10 20 30 40 50 60 70 80 90 100m
 1cm on map corresponds with 10m in the field
 Contour interval is 1 meter

DONG NAI No.3 DAM SITE

DONG NAI NO 3 & NO 4 COMBINED HYDROPOWER PROJECT

DN30-B



ADJOINING SHEETS

DN30-A	DN30-B	DN30-C
DN30-B	DN30-B	DN30-C
DN30-B	DN30-C	DN30-D

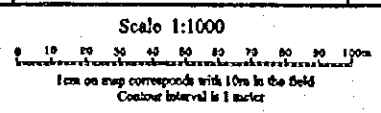
LEGEND

Control Point (IV order traverse)	▲	IV-01 557514
Control Point (1st grade traverse)	○	I-04 557525
Elevation Station	△	557535
Cross-section Post	●	557546
Spot Height	•	557557
Bore Hole	⊙	557568
Test Pit	⊙	557579
House or Building	■	
Artificial Slope	▨	
Footpath	—	
Bamboo	∟	
Vegetation Boundary	⋯	
Bush or Forest	○	
Stream	—	
Streamlet	- - -	
Cleft	∩	
Exposed Rock	⋈	
Water Edge Line	—	

This map is made by ground survey
 Coordinate system: Distance of ground elevation and referred to Indian UTM 1950
 Vertical Datum: Mean Sea Level of Ho Chi

DONG NAI NO.3 & NO.4 COMBINED HYDROPOWER PROJECT (F/S)
 SOCIALIST REPUBLIC OF VIET NAM
 ELECTRICITY OF VIET NAM
 JAPAN INTERNATIONAL COOPERATION AGENCY
TOPOGRAPHIC MAP
OF DONG NAI NO.3 DAM SITE
 Date: September 25, 1999 Drawing No. TM-DN30-B-83

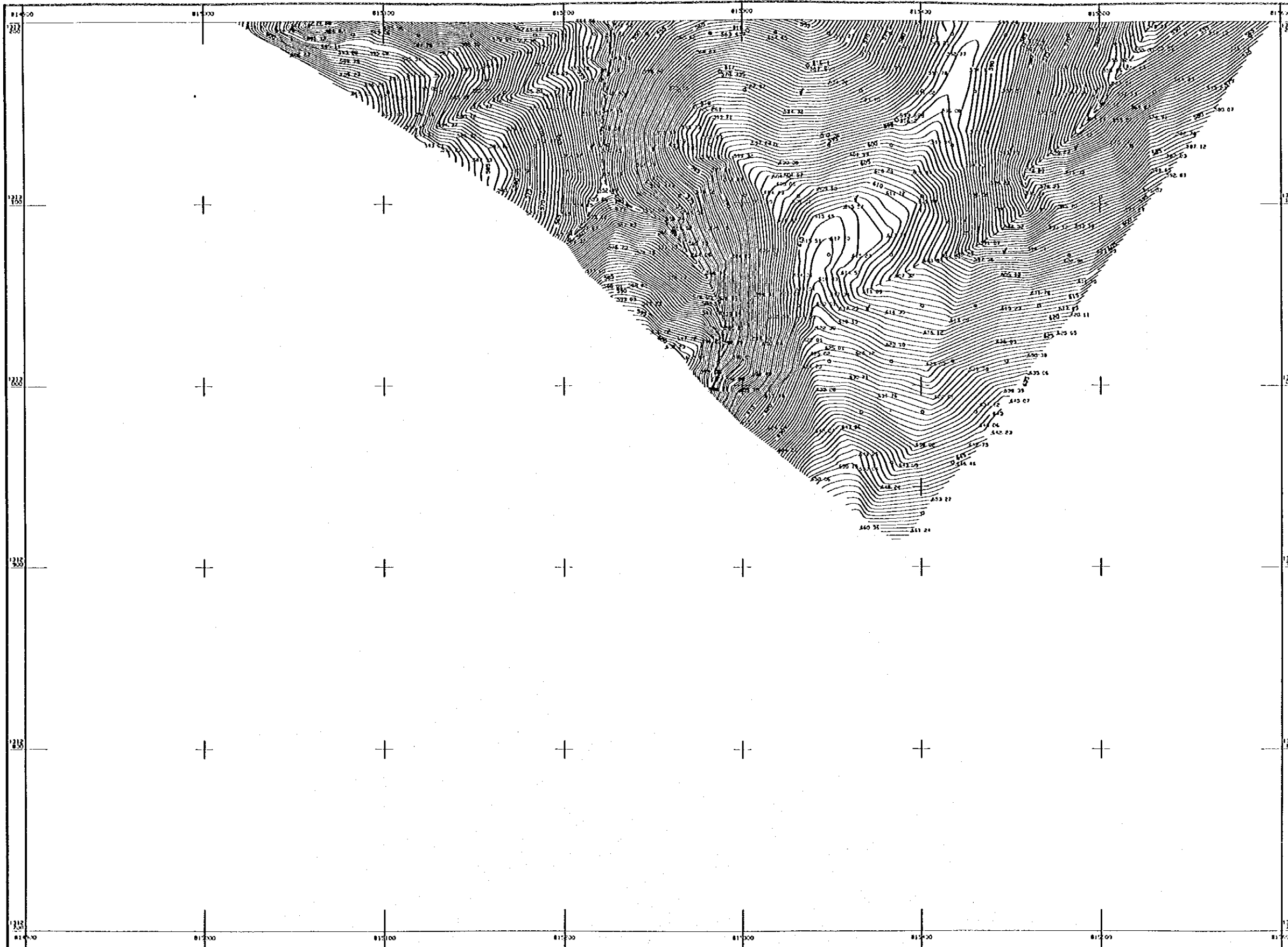
- Surveyed by : Tran Anh Quoc
 - Checked by : Nguyen Thi Det



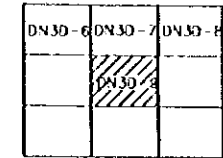
DONG NAI No.3 DAM SITE

DONG NAI NO 3 & NO 4 COMBINED HYDROPOWER PROJECT

DN30-9



ADJOINING SHEETS



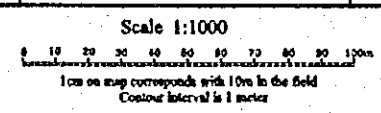
LEGEND

Control Point (IV order traverse)	A 121.31
Control Point (1st grade traverse)	1-04
Observation Station	414.303
Cross-section Post	414.306
Spot Height	597.21
Bore Hole	414.303
Test Pit	414.306
House or Building	■
Artificial Slope	
Footpath	— — —
Bamboo	/
Vegetation Boundary	- - -
Bush or forest	o
Stream	~~~~~
Streamlet	- - -
Cave	⌒
Exposed Rock	▲▲▲
Water Edge Line	— · — · —

This map is made by ground survey
 Coordinate system: Distances of ground elevation
 and referred to Indian UTM 1959
 Vertical Datum: Mean Sea Level of Ho Tien

DONG NAI NO.3 & NO.4 COMBINED
 HYDROPOWER PROJECT (F/S)
 SOCIALIST REPUBLIC OF VIET NAM
 ELECTRICITY OF VIET NAM
 JAPAN INTERNATIONAL COOPERATION AGENCY
 TOPOGRAPHIC MAP
 OF DONG NAI NO.3 DAM SITE
 Date: September 21, 1999 Drawing No. TM-DN3-D5-99

- Surveyed by: Tran Anh Quoc
 - Checked by: Nguyen Van Dai



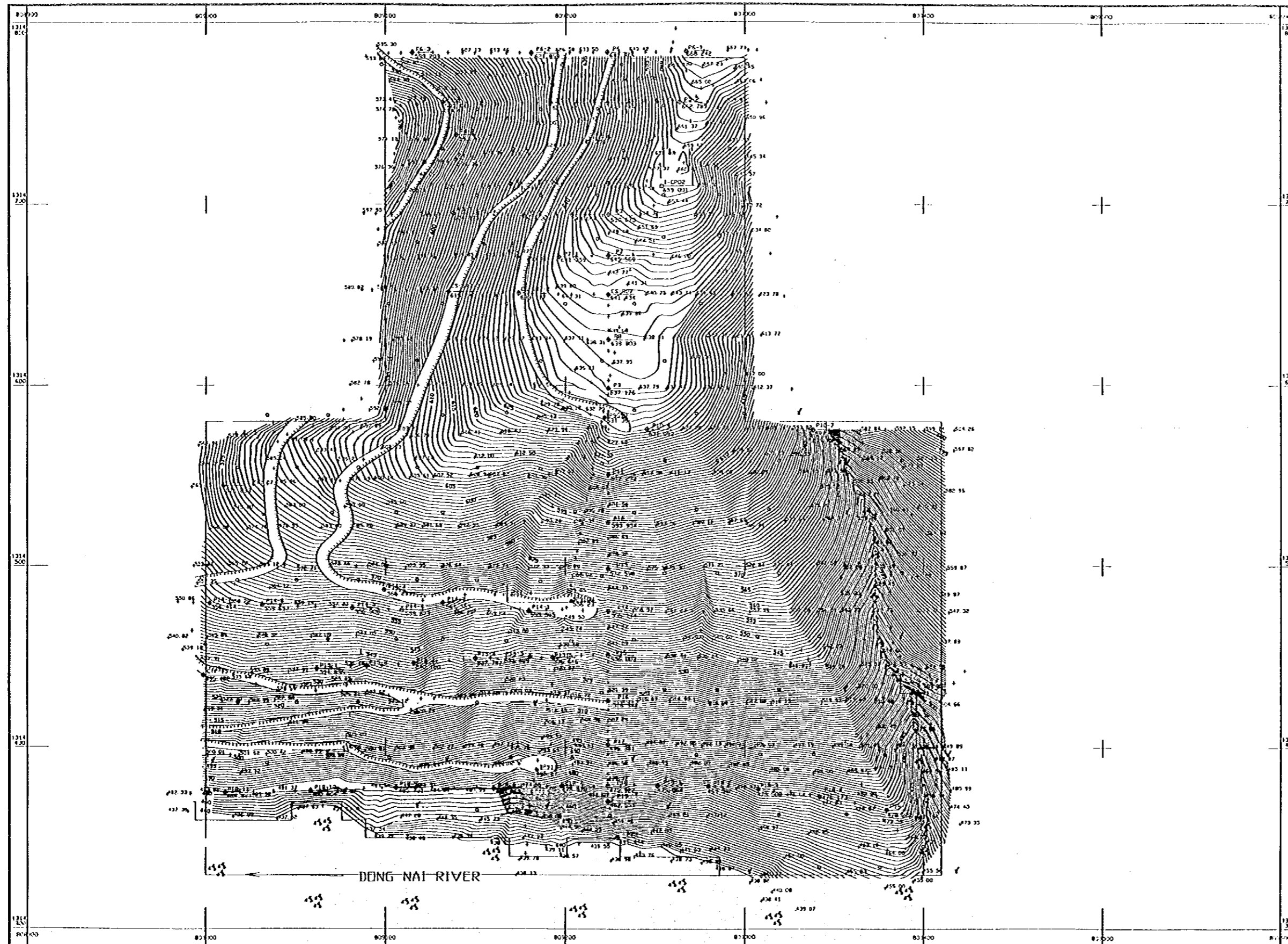
Attachment 2

Topographic Maps at Dong Nai No.3 Powerhouse and Surge Tank Site (Original Map Scale : 1/1,000)

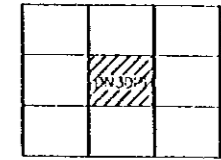
DONG NAI No3 POWER HOUSE

DONG NAI NO 3 & NO 4 COMBINED HYDROPOWER PROJECT

DN3DPH



ADJOINING SHEETS



LEGEND

Control Point (IV order traverse)	A 13141
Control Point (1st grade traverse)	1 04
Observation Station	57 345
Cross-section Post	CS 106
Spot Height	577 21
Bore Hole	823110
Test Pit	823114
House or Building	■
Artificial Slope	
Footpath	— · — · — ·
Road	—
Vegetation Boundary	
Brush or Forest	o
Stream	— · — · — ·
Streamlet	— · — · — ·
Cree	
Exposed Rock	▲▲
Water Edge Line	— · — · — ·

This map is made by ground survey
 Coordinate system: Distance of ground elevation and refers to Indian UTM 1950
 Vertical Datum: Mean Sea Level of Ho Tan

DONG NAI NO.3 & NO.4 COMBINED
 HYDROPOWER PROJECT (F/S)
 SOCIALIST REPUBLIC OF VIET NAM
 ELECTRICITY OF VIET NAM
 JAPAN INTERNATIONAL COOPERATION AGENCY
 TOPOGRAPHIC MAP
 OF DONG NAI NO.3 POWER HOUSE
 Date: September 25/1989 Drawing No. TN 033 (1/1)

- Surveyed by : Tran Anh Duoc
 - Checked by : Nguyen Hien Dat

Scale 1:1000
 0 10 20 30 40 50 60 70 80 90 100m
 1cm on map corresponds with 10m in the field
 Contour Interval is 1 meter

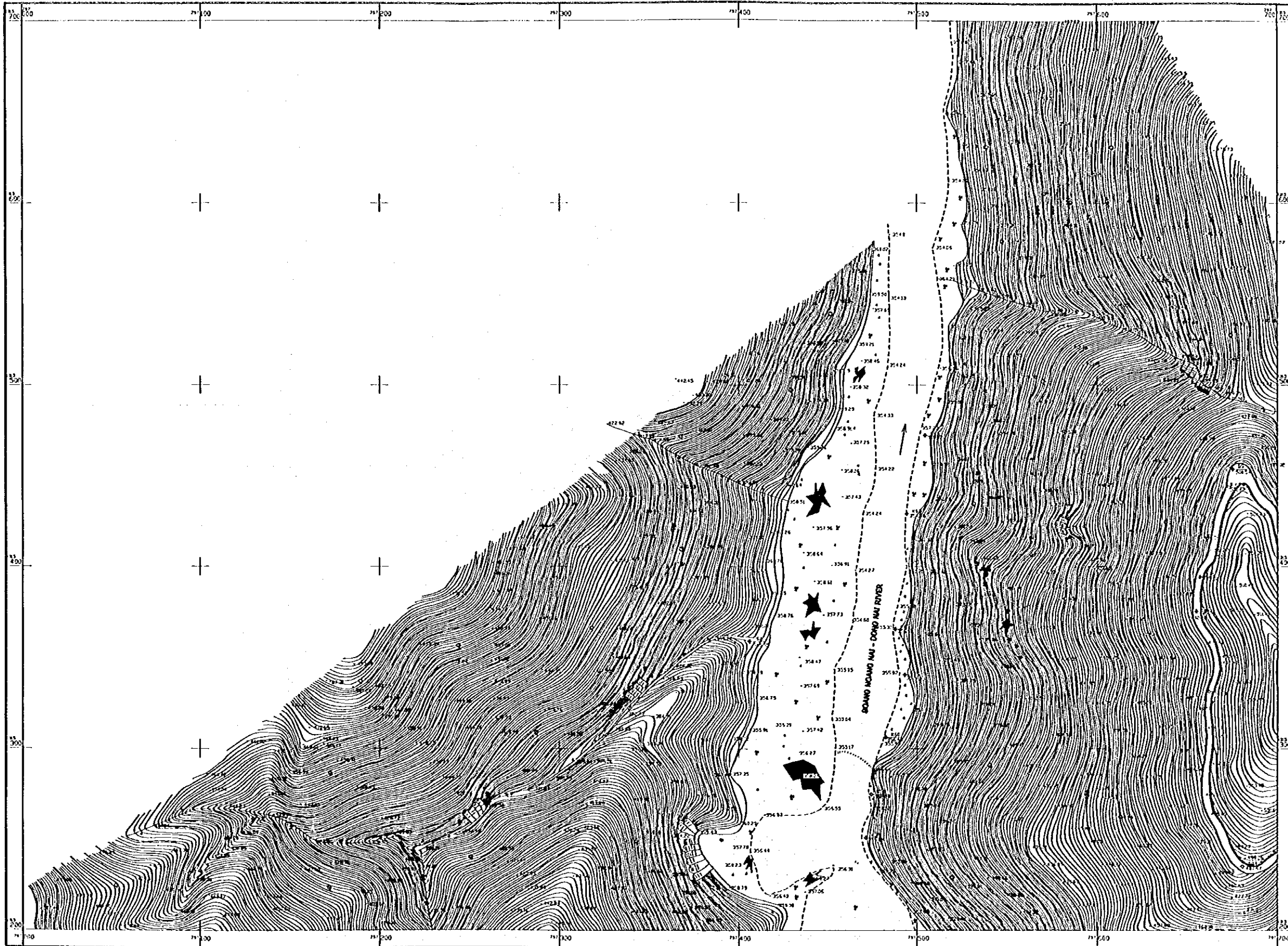
Attachment B3

**Topographic Maps at Dong Nai No.4 Dam Site
(Original Map Scale : 1/1,000)**

DONG NAI No.4 DAM SITE

DONG NAI No.3 AND No.4 COMBINED HYDROPOWER PROJECT (F/S)

DN10-1



ADJOINING SHEETS

	DN-1
	DN-2
	DN-3
	DN-4
	DN-5

LEGEND

DESCRIPTION	SYMBOL
Control Point (FS)	
Control Point (IV order traverse)	
Control Point (1st grade traverse)	
Control Point (sterradia traverse)	
Cross section Point	
Spot Height	
Bore Hole	
Artifact Strip	
Road or Track	
Footpath	
Vegetation Boundary	
Bush or Forest	
River Bank	
Stream	
Waterfall	
Cleft	
Landslide	
Exposed Rock	
Water Edge Line	

- This map made by ground survey
- Coordinate System: Distance at ground elevation and referred to ILM (Indian UTM)
- Height Datum: Mean sea level at Ho Ren

DONG NAI No.3 & No.4 COMBINED HYDROPOWER PROJECT (F/S)

SOCIALIST REPUBLIC OF VIETNAM
ELECTRICITY OF VIETNAM

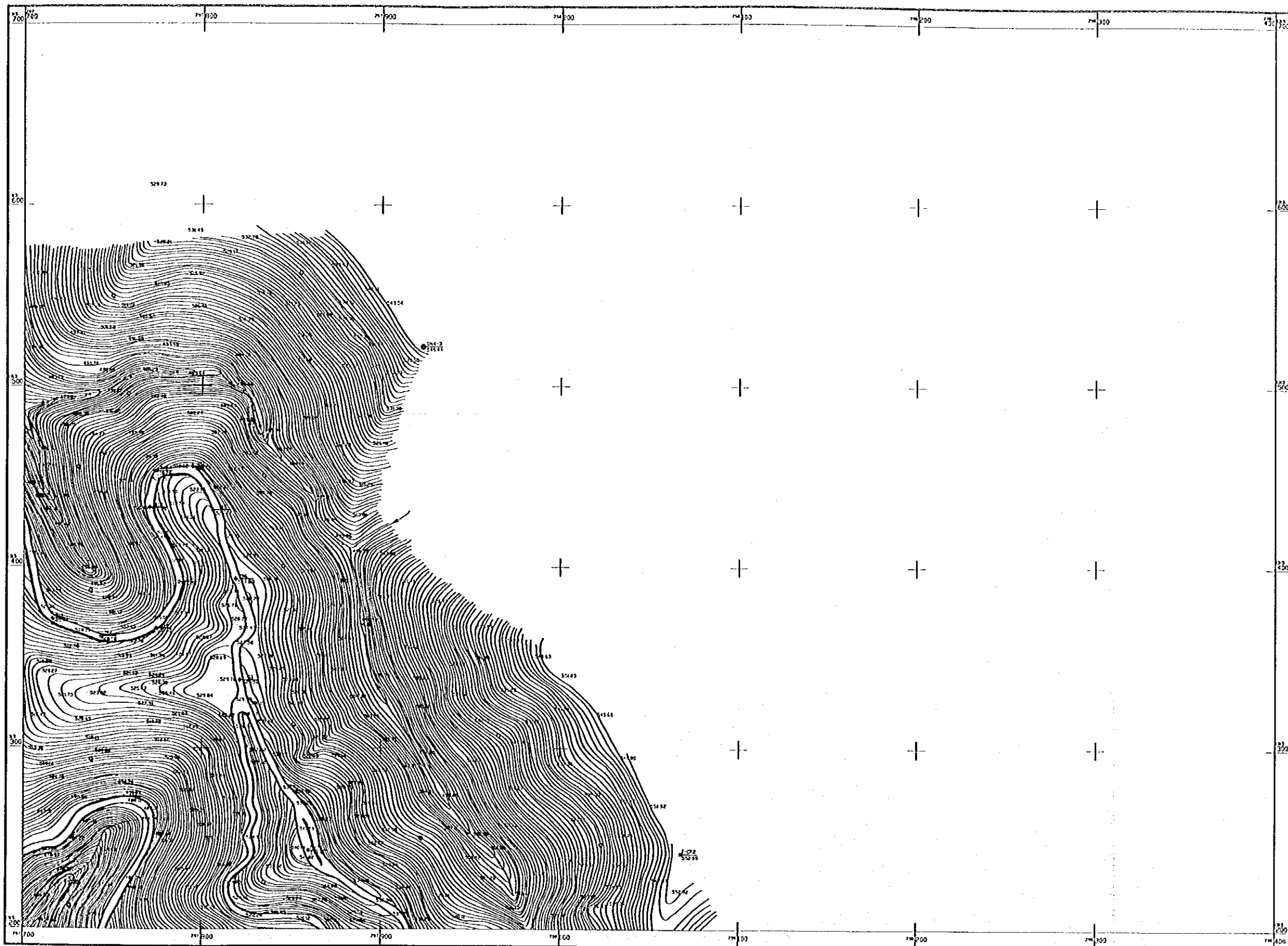
JAPAN INTERNATIONAL COOPERATION AGENCY

TOPOGRAPHIC MAP
OF DONG NAI No.4 DAM SITE

Date: September 25, 1993 Drawing No. T4/CM/DS/57

SCALE 1:1000

0 10 20 30 40 50 60 70 80 90 100m
1 cm on the map corresponds to 10m in the field
Contour interval is 1meter



ADJOINING SHEETS

DM-1	DM-2
DM-3	DM-4
DM-5	DM-6
DM-7	

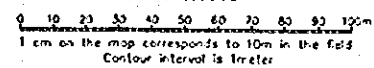
LEGEND

DESCRIPTION	SYMBOL
Control Point (GPS)	● EN-2 345.678
Control Point (IV order traverse)	▲ 1-1 345.678
Control Point (1st grade traverse)	□ 1-1 345.678
Control Point (Intermediate traverse)	○ 1-1 345.678
Cross-section Post	● 1-1 345.678
Spot Height	● 1-1 345.678
Bore Hole	● 1-1 345.678
Artificial Slope	
Road or Track	—
Footpath	—
Vegetation Boundary	—
Bush or Forest	
River Bank	—
Stream	—
Waterfall	
Cave	
Landfill	
Exposed Rock	
Water Edge Line	—

- This map made by ground survey
- Coordinate System: Distance at ground elevation and referred to 1968 Indian UTM
- Height Datum: Mean sea level at Ho Ten

DONG NAI No.3 & No.4 COMBINED
HYDROPOWER PROJECT (F/S)
SOCIALIST REPUBLIC OF VIET NAM
ELECTRICITY OF VIET NAM
JAPAN INTERNATIONAL COOPERATION AGENCY
TOPOGRAPHIC MAP
OF DONG NAI No.4 DAM SITE
Date: September 25, 1991 Drawing No. TM (DM) 15-27

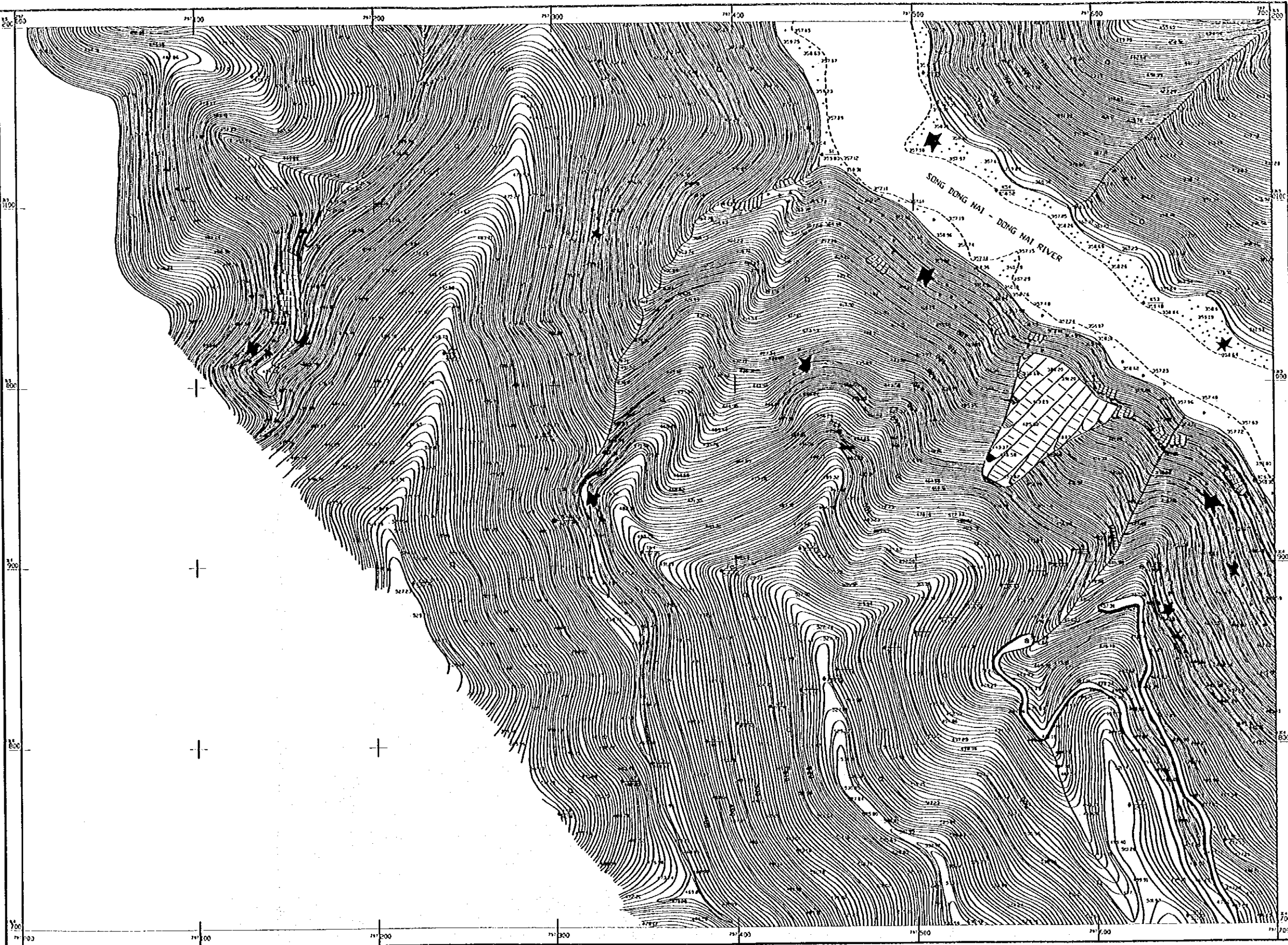
SCALE 1:1000



DONO NAI No.4 DAM SITE

DONO NAI No.3 AND No.4 COMBINED HYDROPOWER PROJECT (F/S)

D44D-3



ADJOINING SHEETS

D44D-1	D44D-2
D44D-3	D44D-4
D44D-5	D44D-6

LEGEND

DESCRIPTION	SYMBOL
Control Point (E/S)	● 144-2 115 878
Control Point (W order traverse)	▲ 144-1 115 878
Control Point (W grade traverse)	△ 144-1 115 878
Control Point (W side traverse)	○ 144-1 115 878
Cross-section Post	● 144-1 115 878
Spot Height	● 144-1 115 878
Bore Hole	● 144-1 115 878
Artificial Slope	
Road or Track	—
Footpath	—
Vegetation Boundary	—
Push or Forest	—
River Bank	—
Stream	—
Waterfall	—
Cave	—
Landslide	—
Exposed Rock	—
Water Edge Line	—

- This map made by ground survey
- Coordinate System: Distance at ground elevation and referred to 1968 Indian UTM
- Height Datum: Mean sea level at Ho Ten

DONO NAI No.3 & No.4 COMBINED HYDROPOWER PROJECT (F/S)

SOCIALIST REPUBLIC OF VIETNAM
ELECTRICITY OF VIETNAM

JAPAN INTERNATIONAL COOPERATION AGENCY

TOPOGRAPHIC MAP
OF DONO NAI No.4 DAM SITE

Date September 15, 1995 Drawing No. F/S D44 E-6 37

