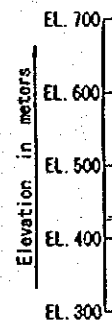


Figure S.25 Spillway for Dong Nai No.4 Dam



P 1



Gate shaft  
 EL. 413.0

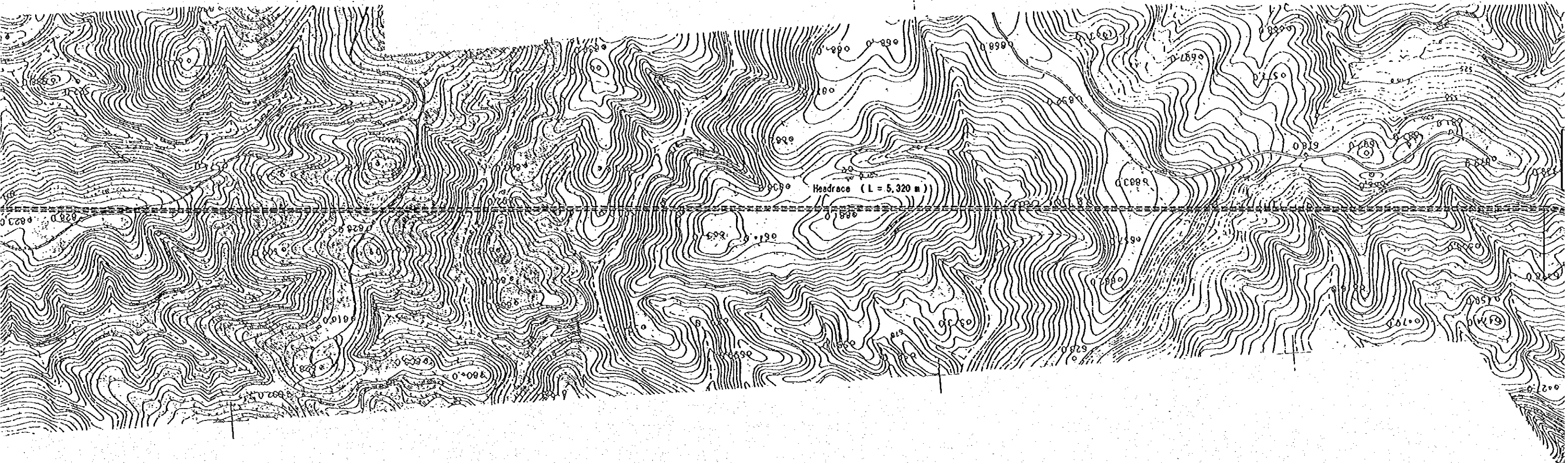
Intake  
 59,000

MOL. 430.0 FSL. 440.0

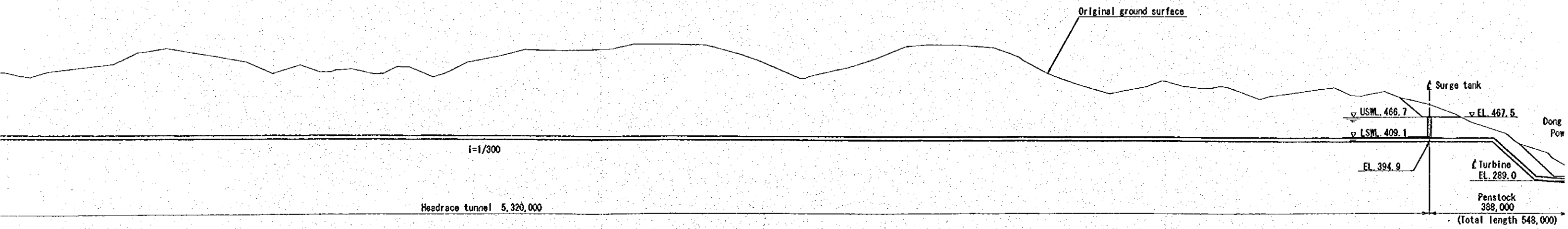
i=1/300

Headrace tunnel 5,320,000

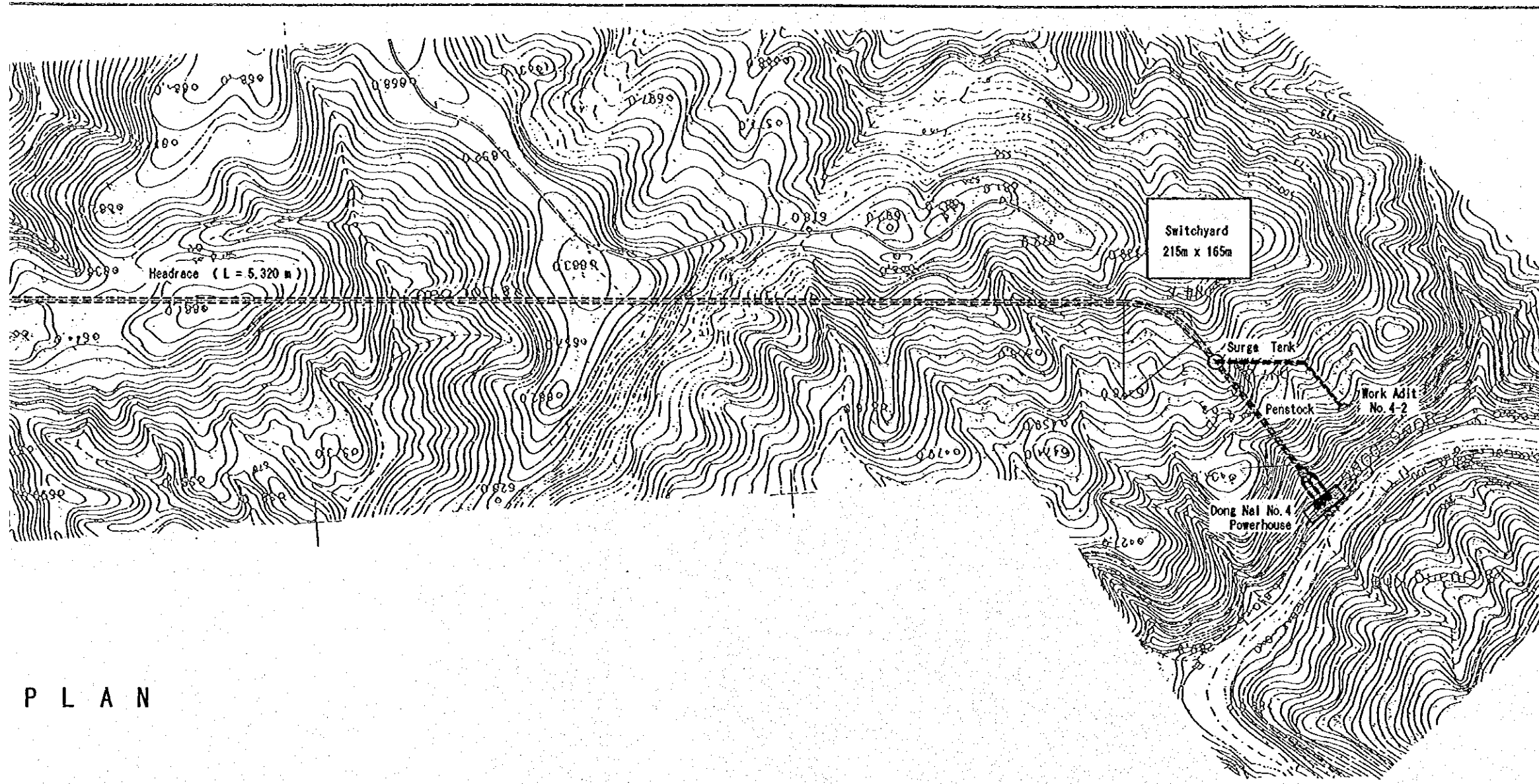
P R O



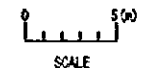
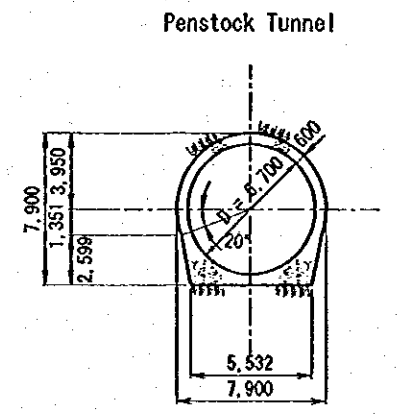
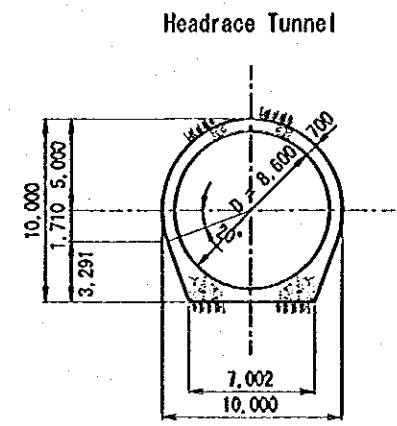
P L A N



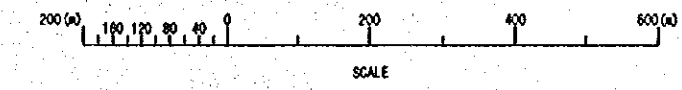
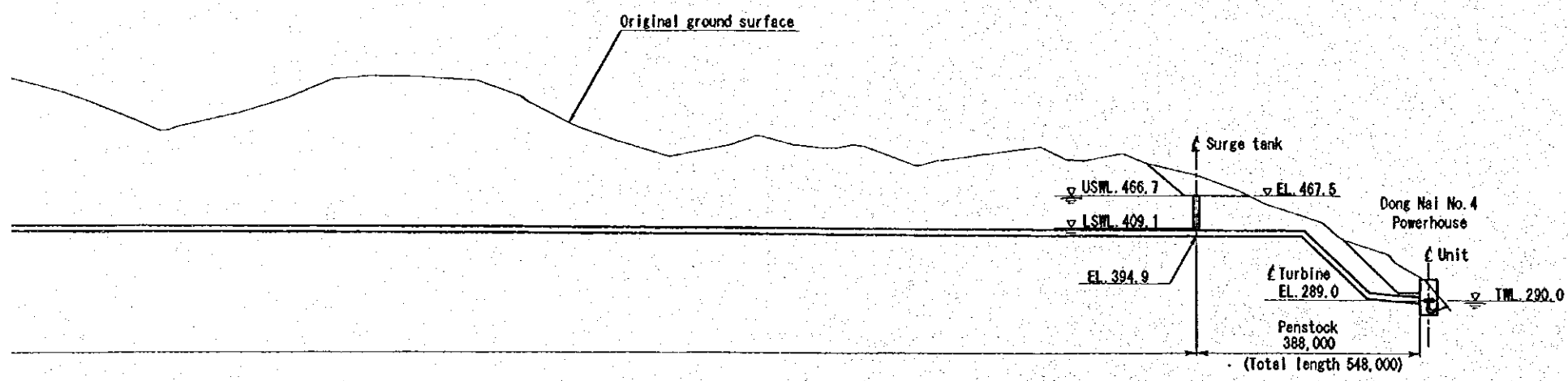
P R O F I L E



P L A N



TYPICAL SECTION



P R O F I L E

Figure S.26 Plan and Profile of Waterway for Dong Nai No.4 Project

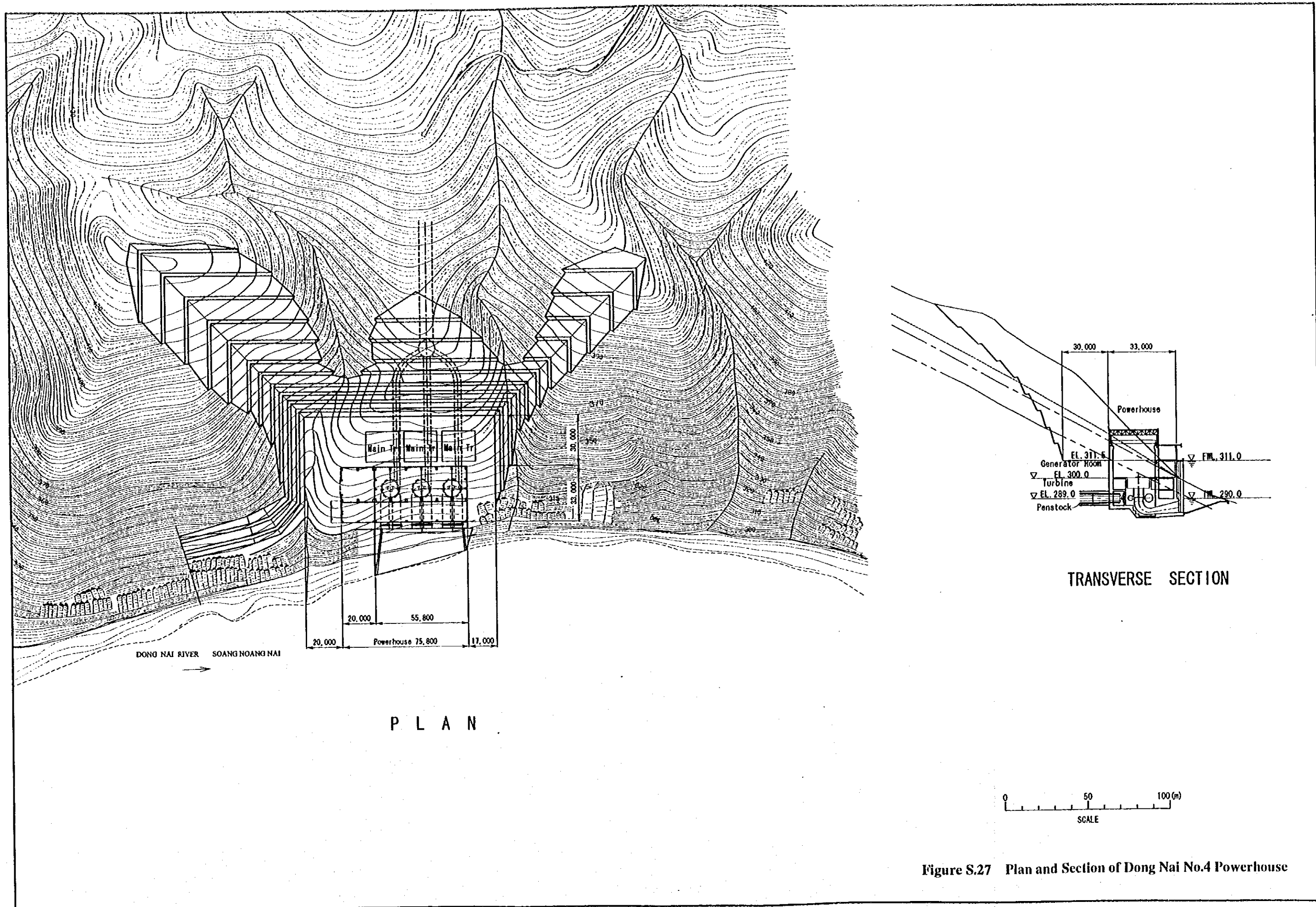


Figure S.27 Plan and Section of Dong Nai No.4 Powerhouse

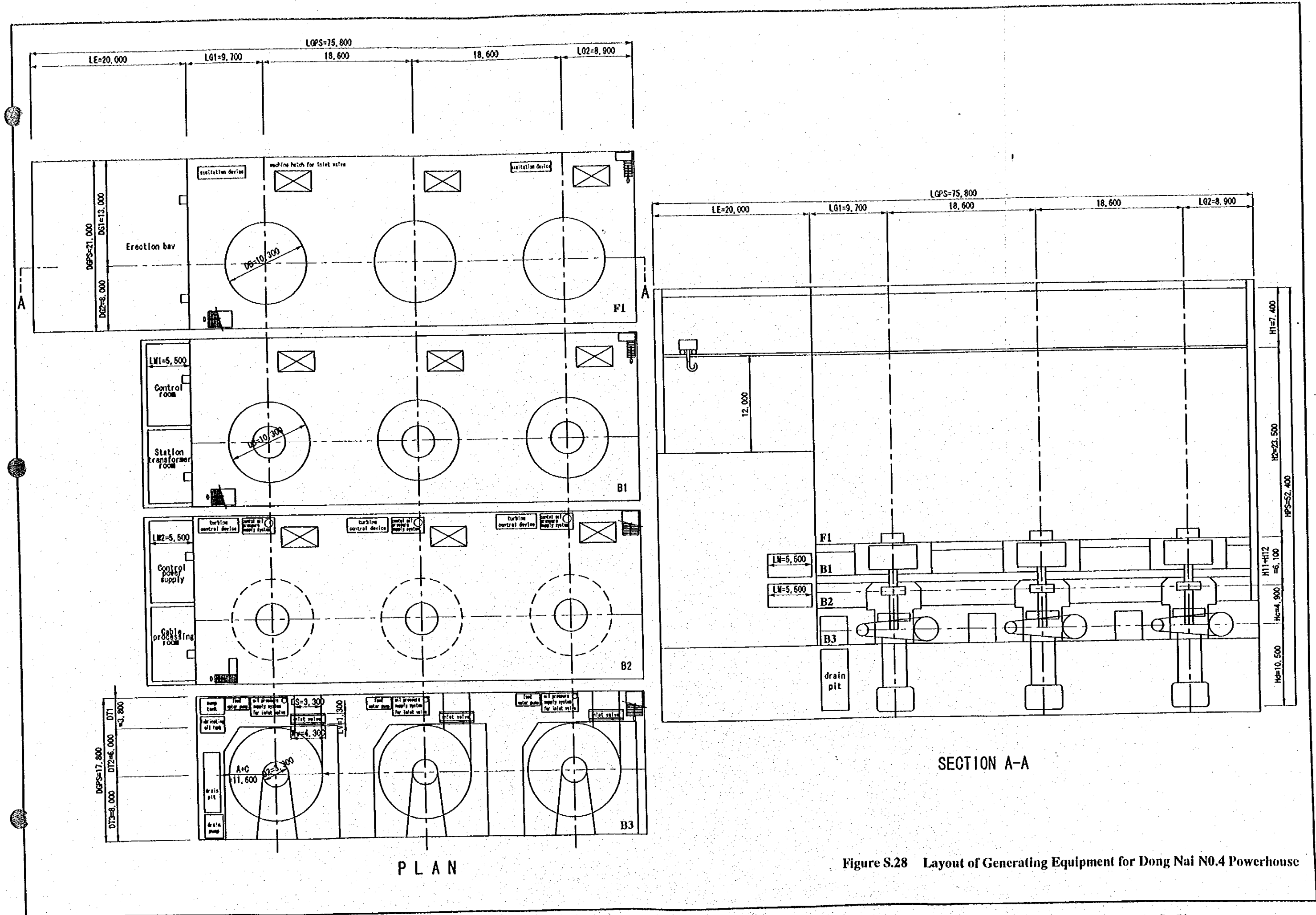
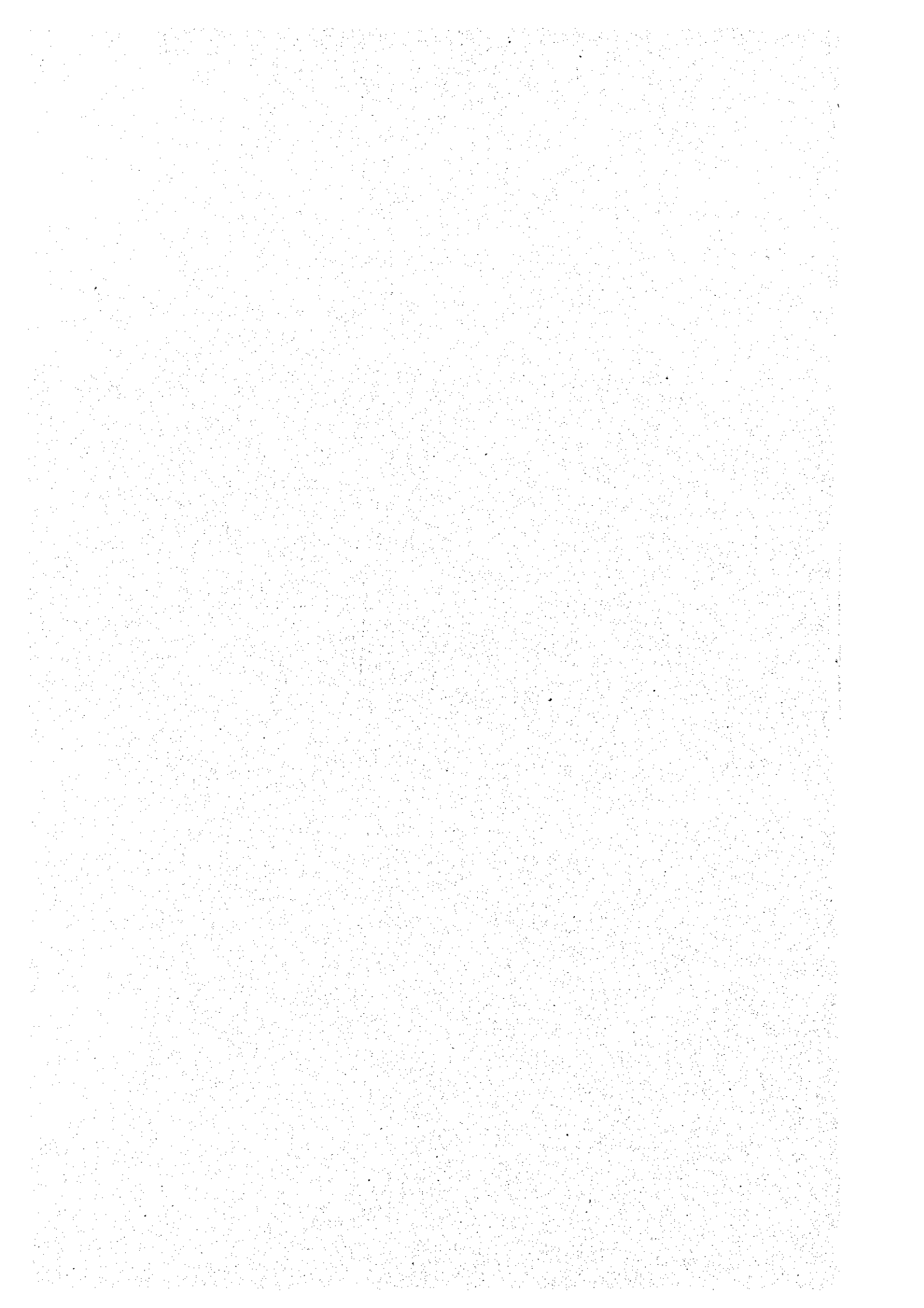


Figure S.28 Layout of Generating Equipment for Dong Nai N0.4 Powerhouse



ALTERNATIVE 3

CONNECTING TO 500kV POWER SYSTEM  
(DIRECT STEP UP TO 500kV)

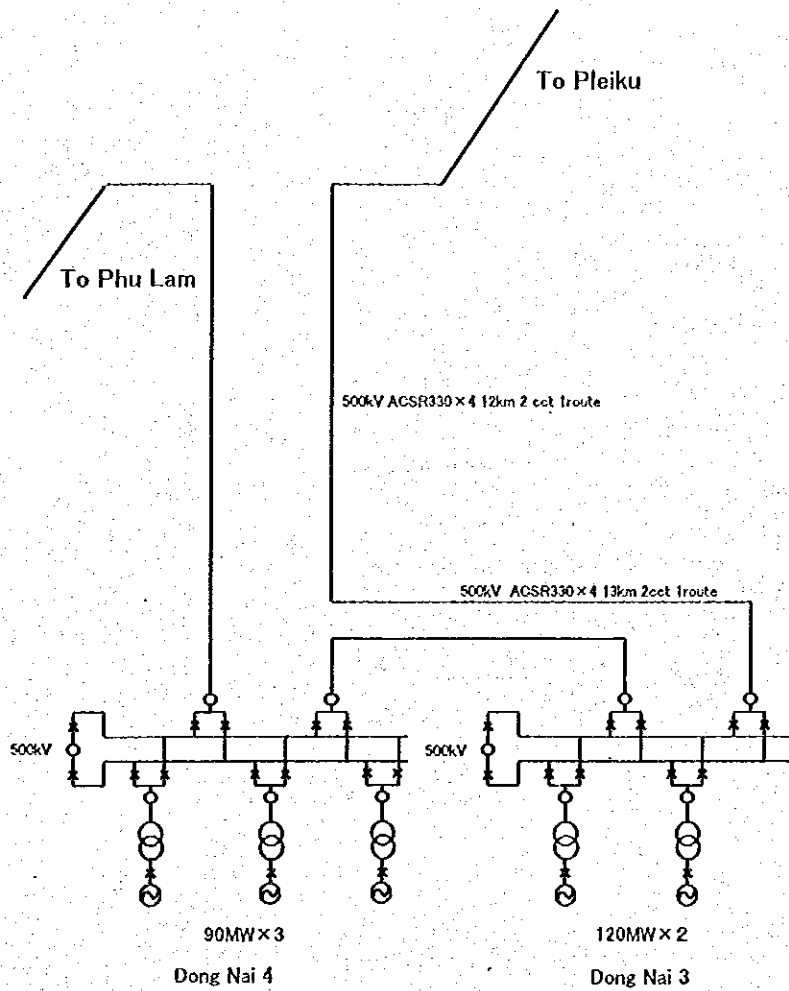


Figure S.29 Promising Transmission Method for Dong Nai No.3 and N0.4 Combined HPP (Alternative3)



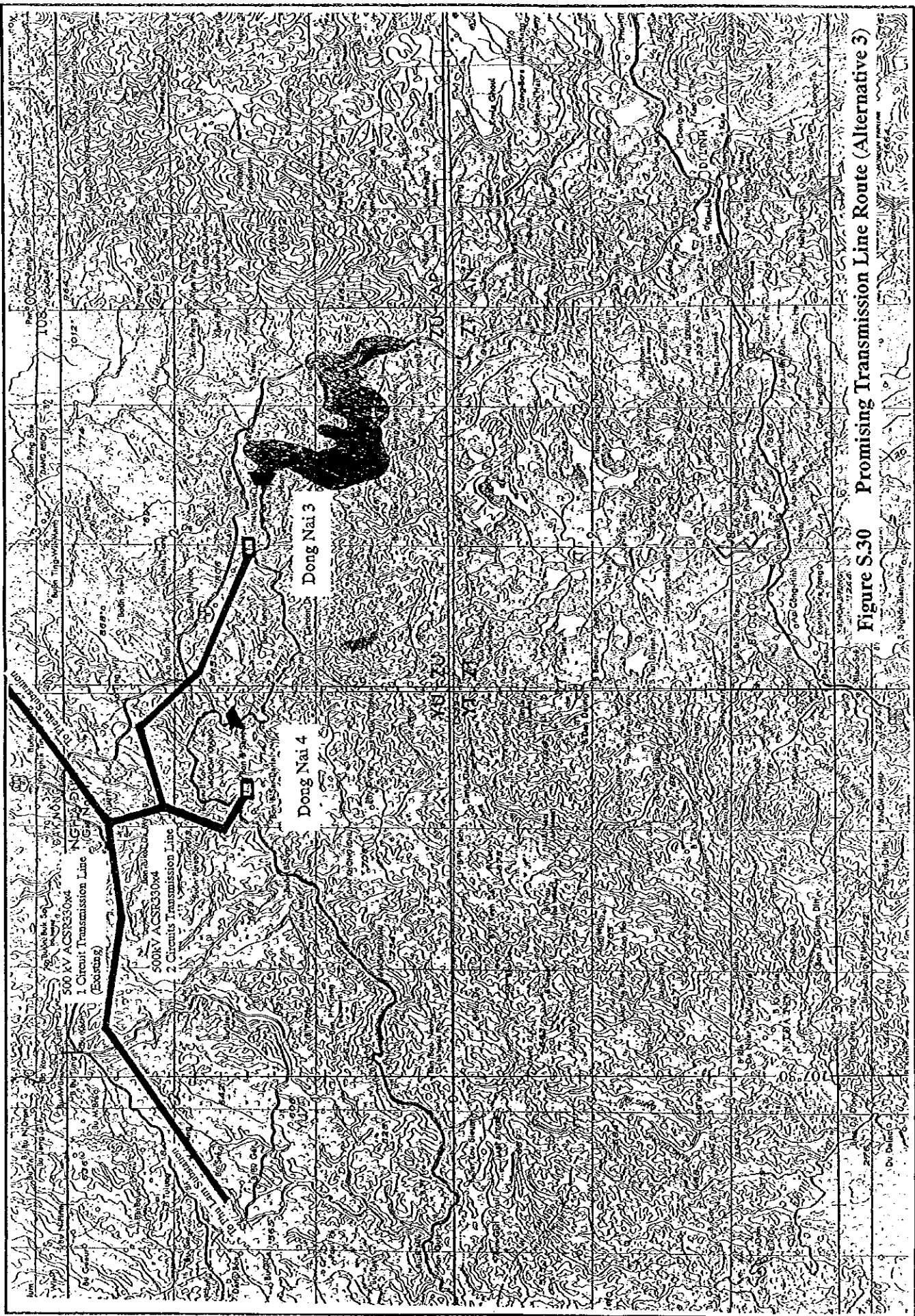
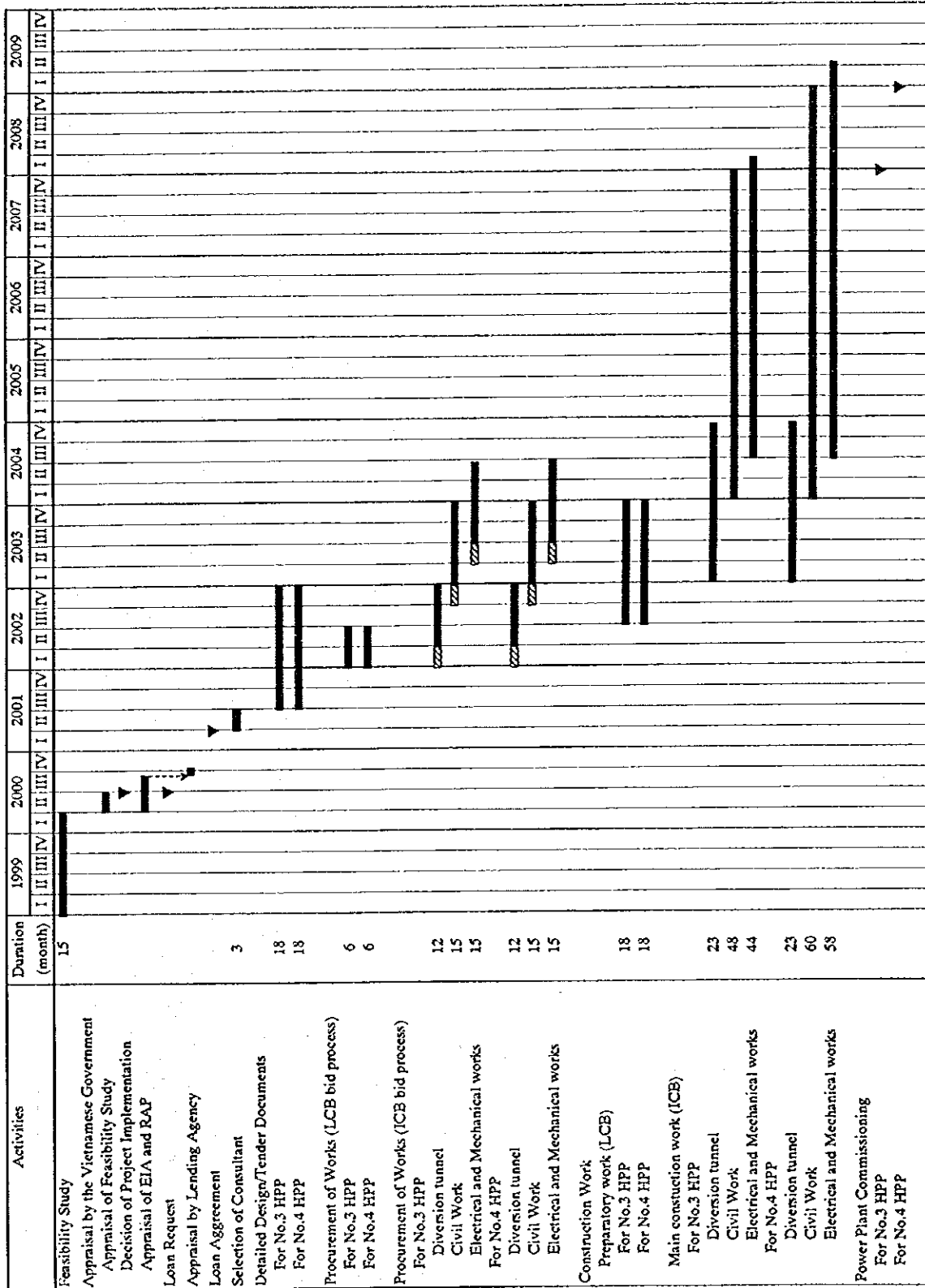


Figure S.31 Implementation Schedule of Dong Nai 3-4 HPP

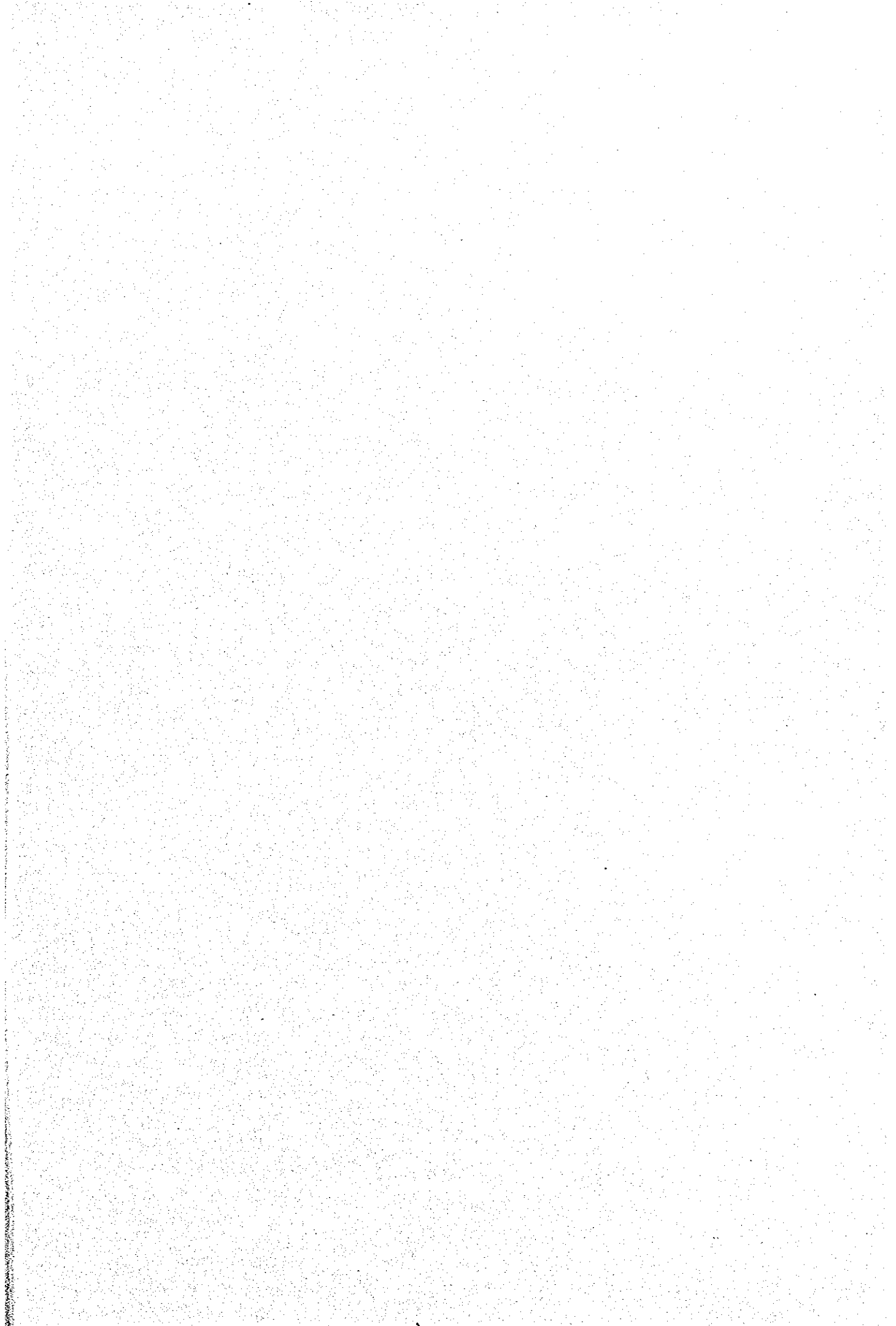


Note: ICB : International Competitive Bid  
 LCB : Local Competitive Bid  
 IZZ : Pre-qualification process









JICA