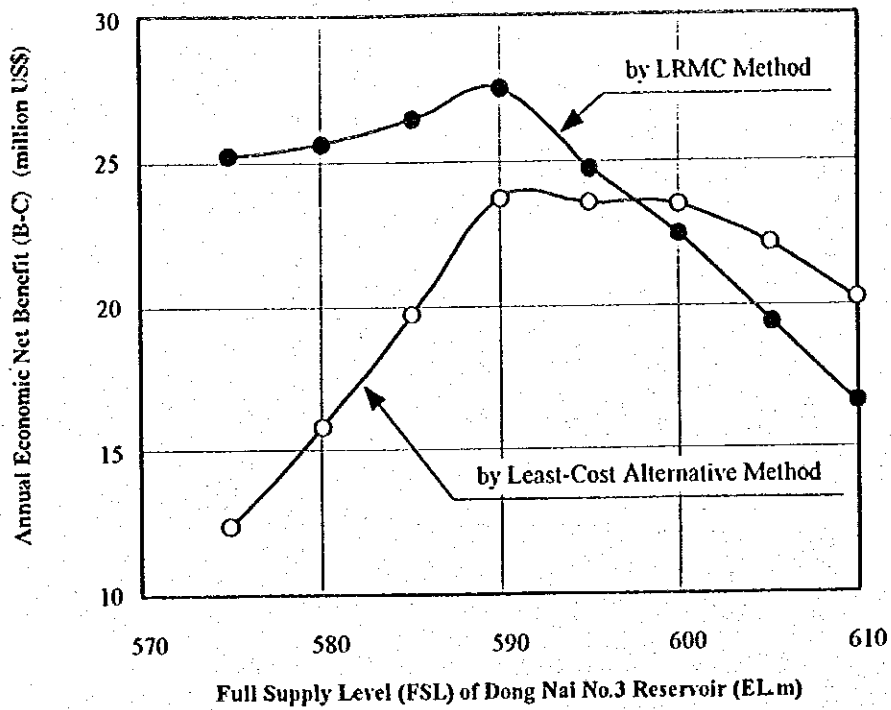
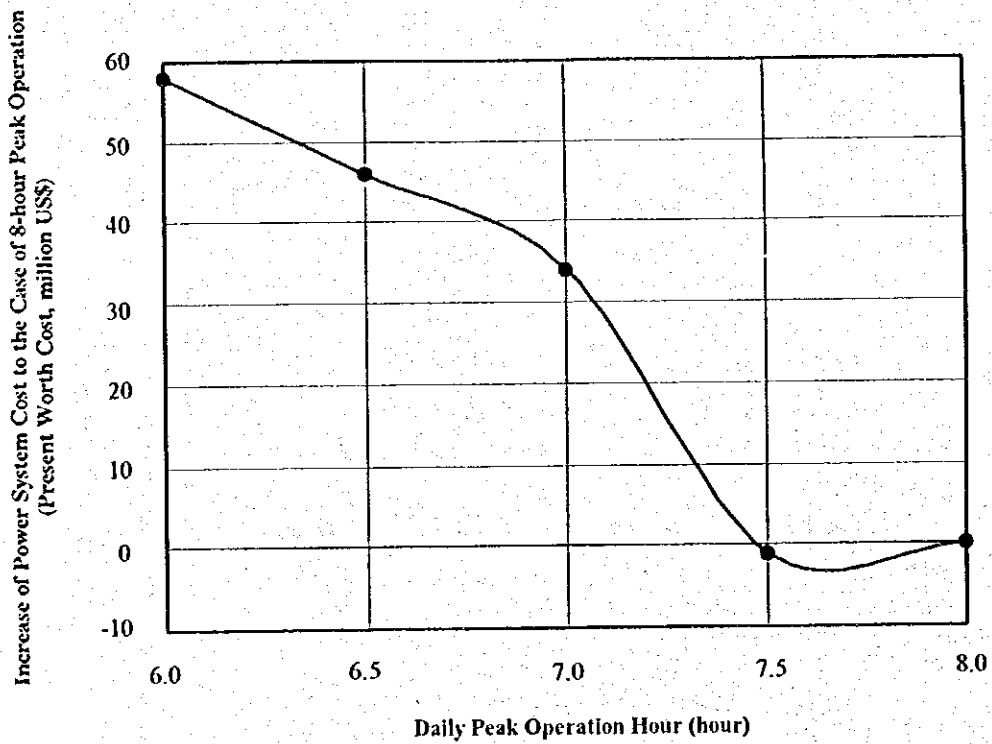


Figure S.15 Alternative Project Layout Plans

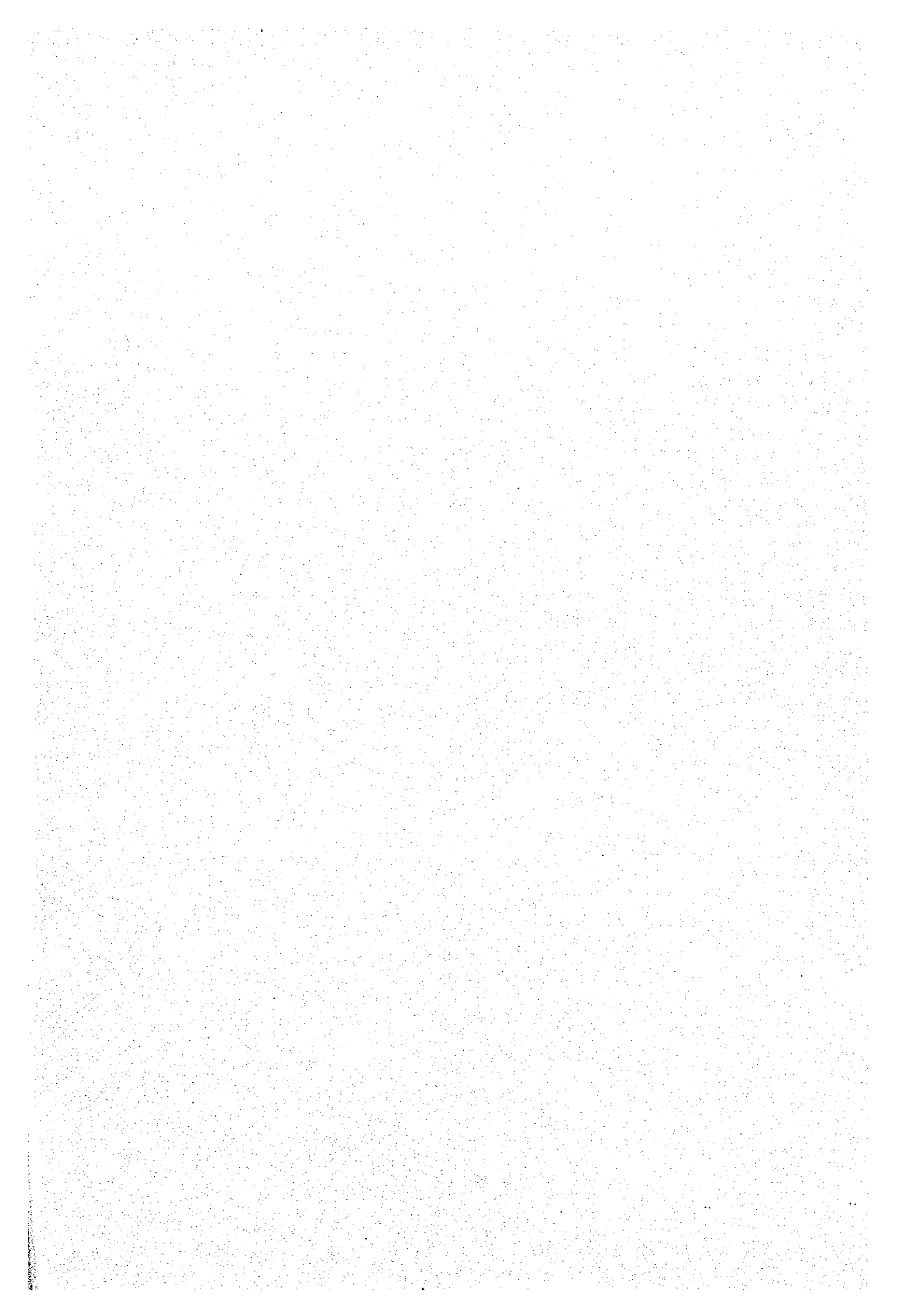


Optimization of Full Supply Level (FSL) of Dong Nai No.3 Reservoir



Optimization of Daily Minimum Operation Hour

Figure S.16 Results of Optimization Study of Project Development Scale



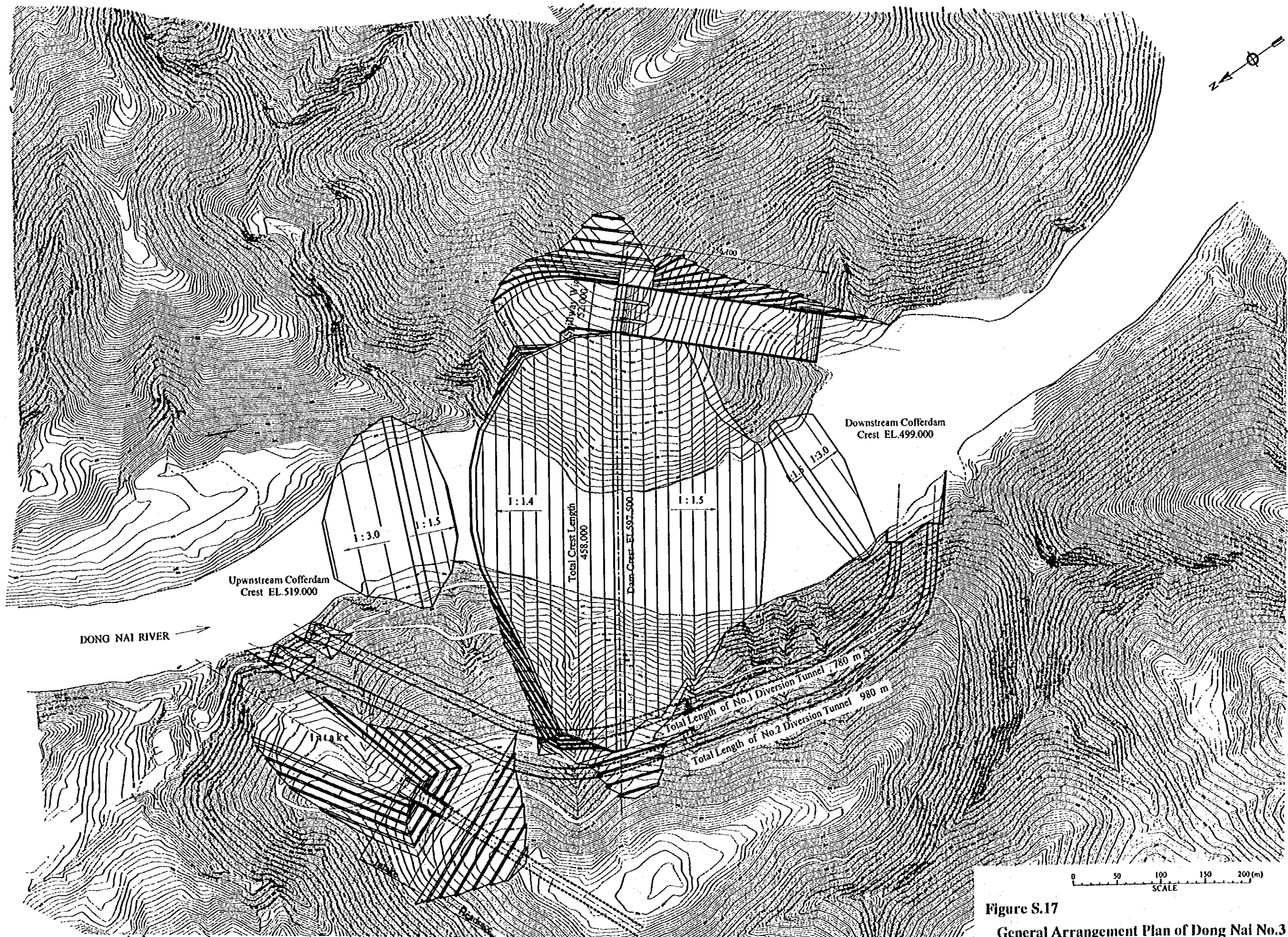


Figure S.17
 General Arrangement Plan of Dong Nai No.3 Dam

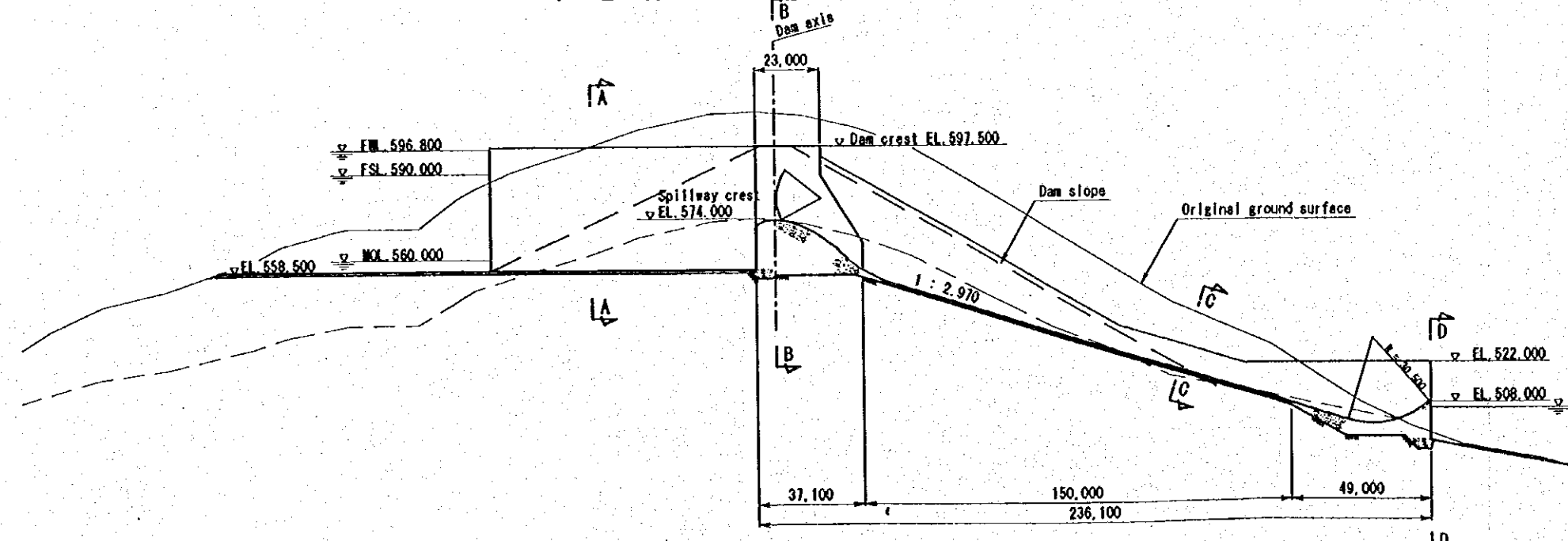
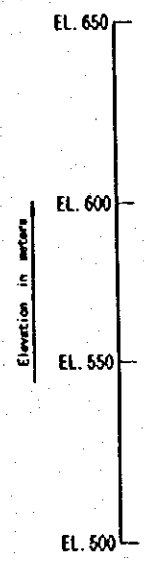
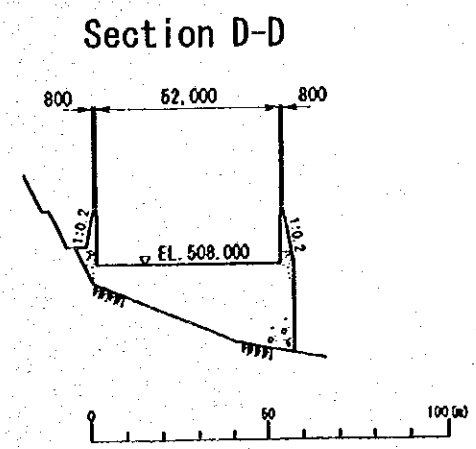
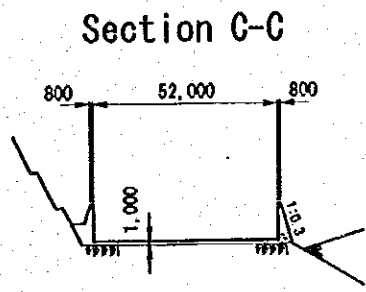
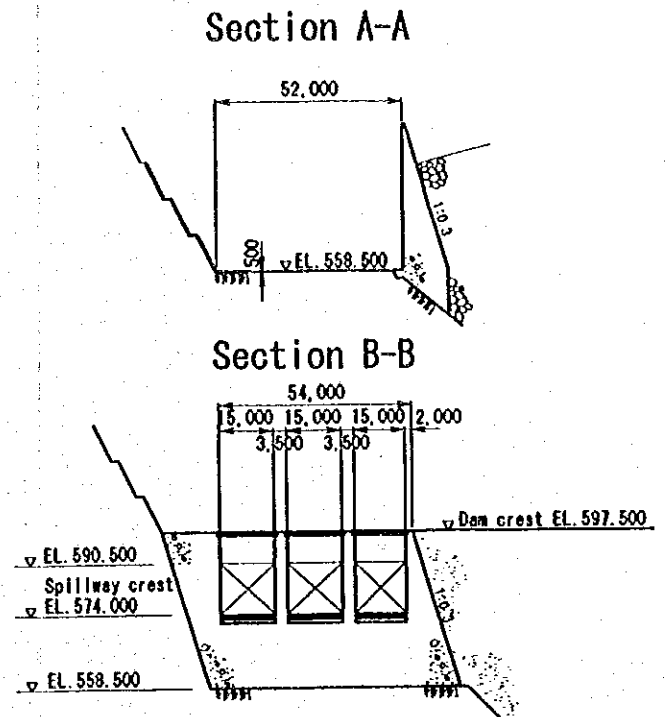
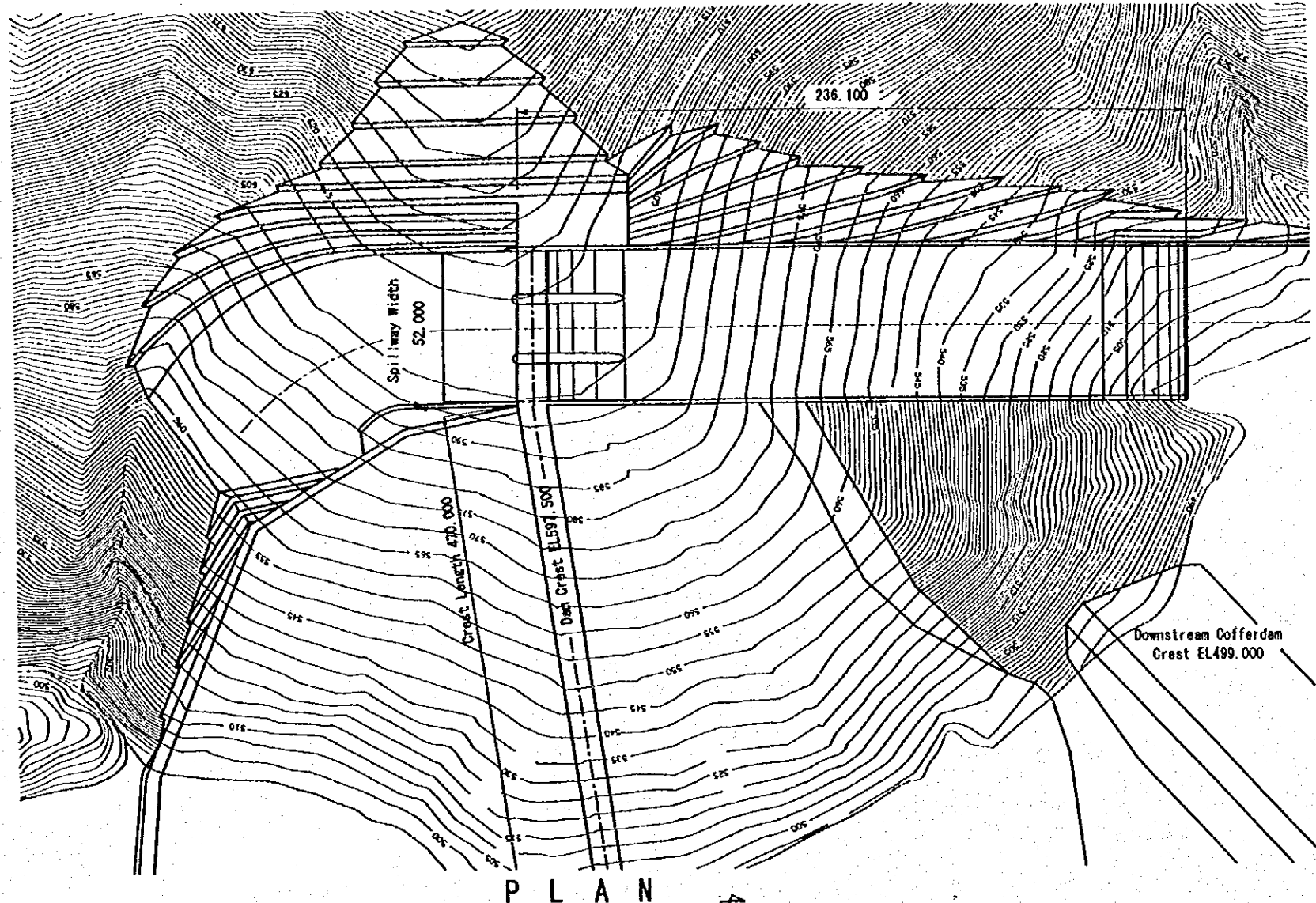
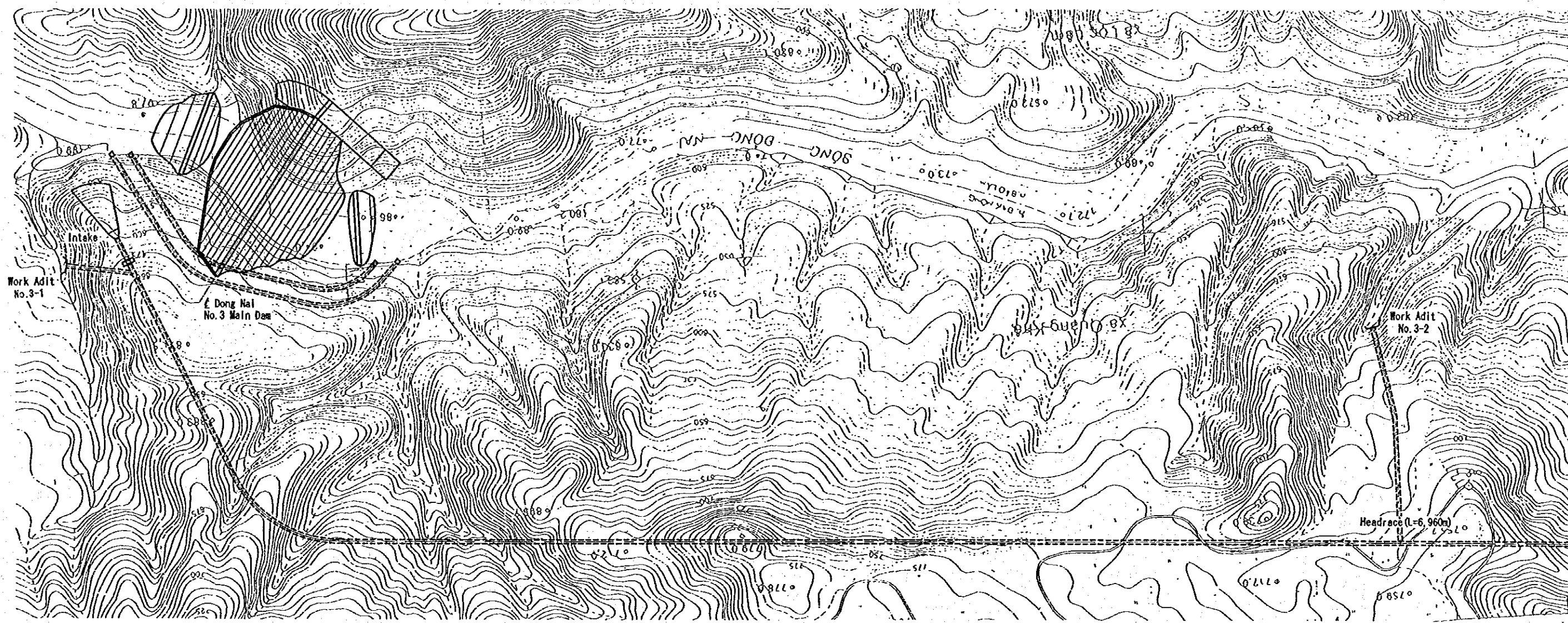
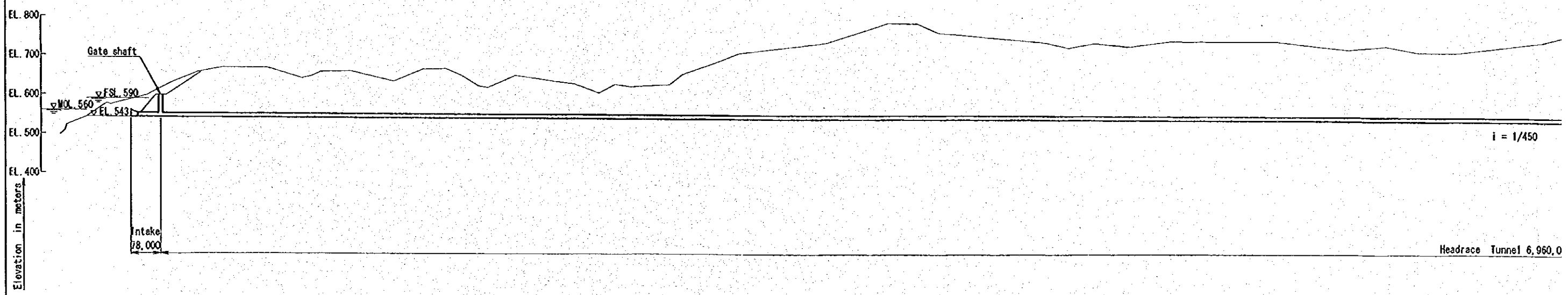


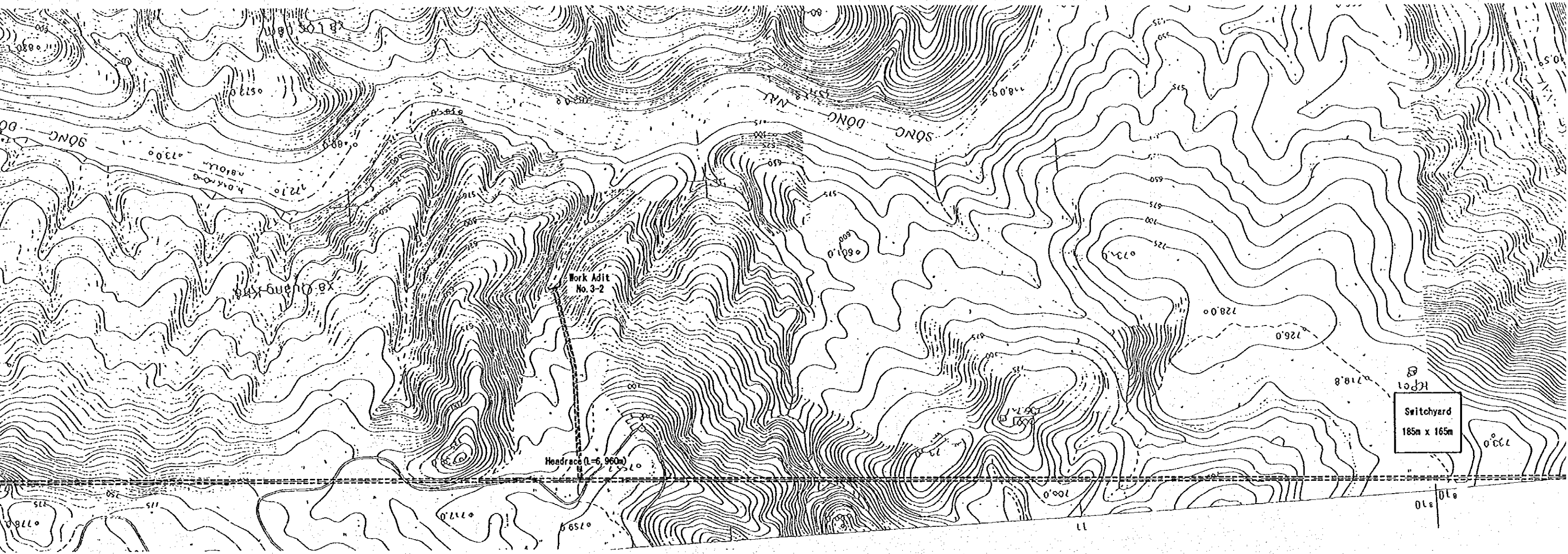
Figure S.19 Spillway for Dong Nai No.3



PLA I



PROFI



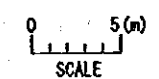
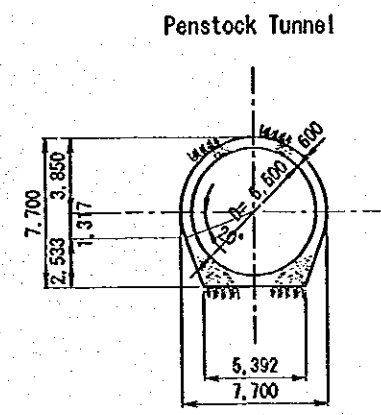
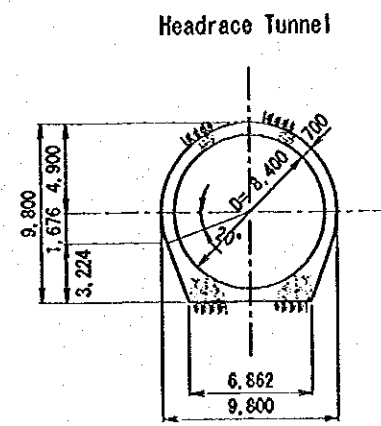
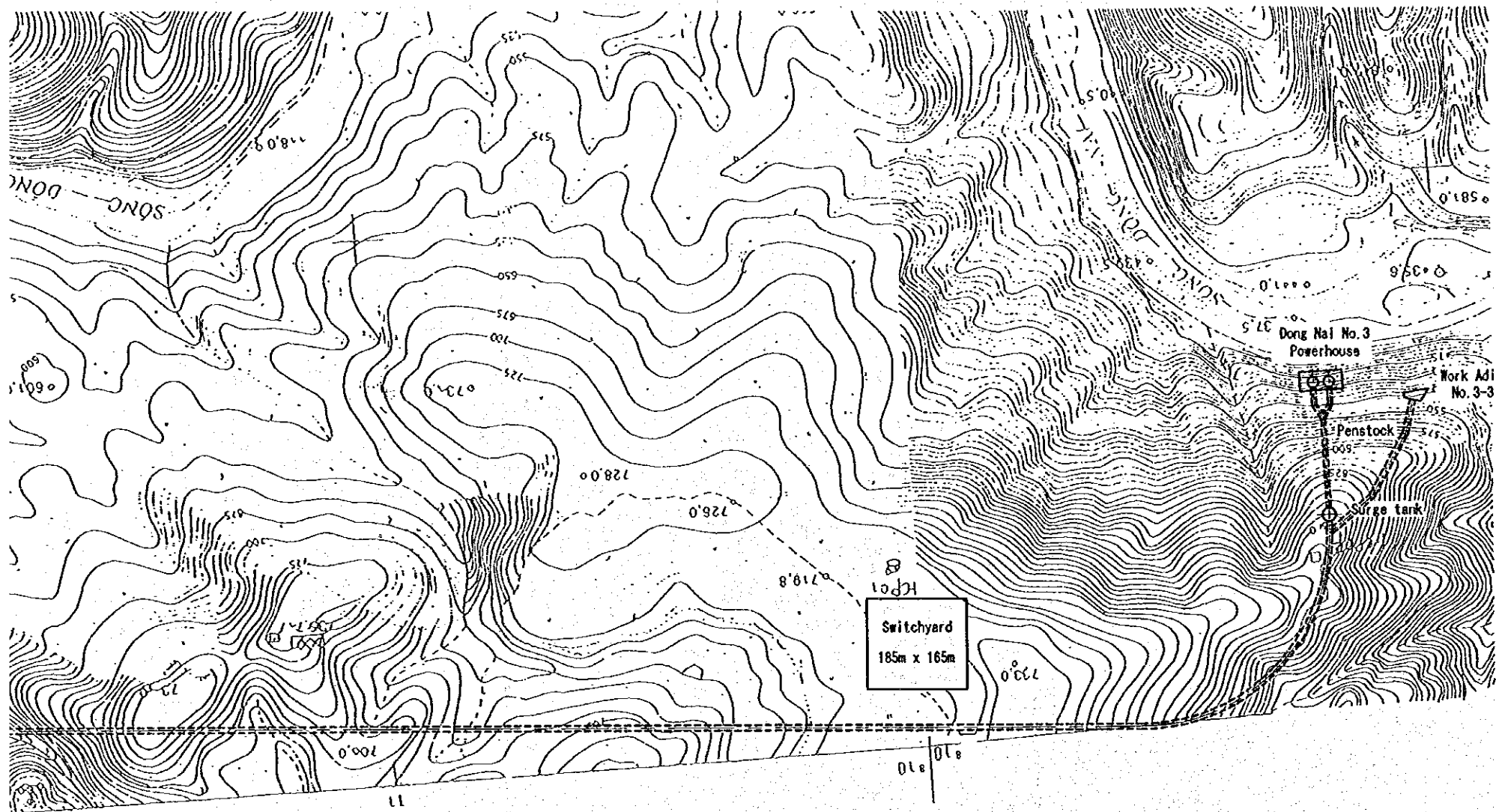
PLAN

Original ground surface

1 = 1/450

Headrace Tunnel 6,960,000

PROFILE



TYPICAL SECTION

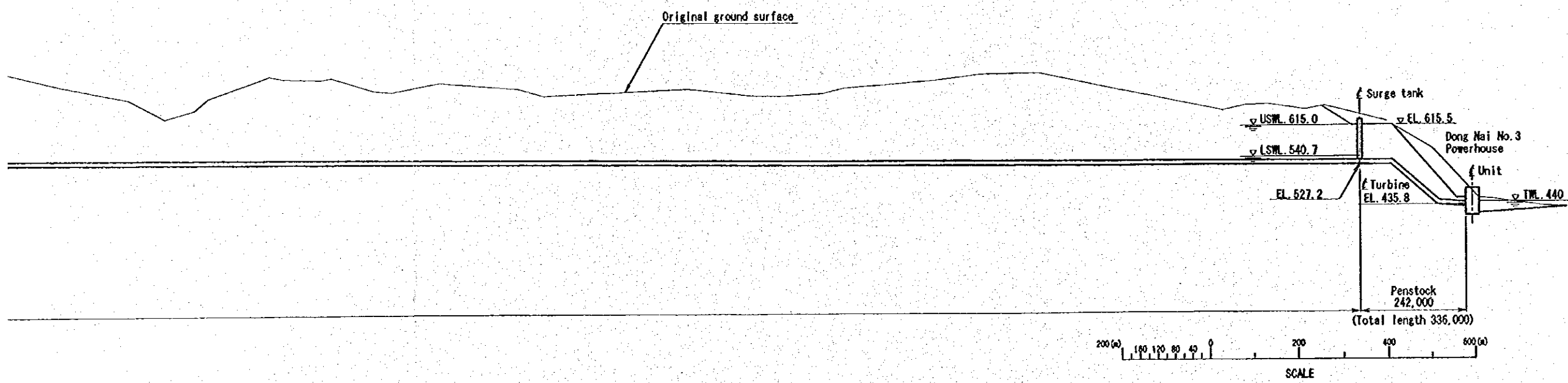
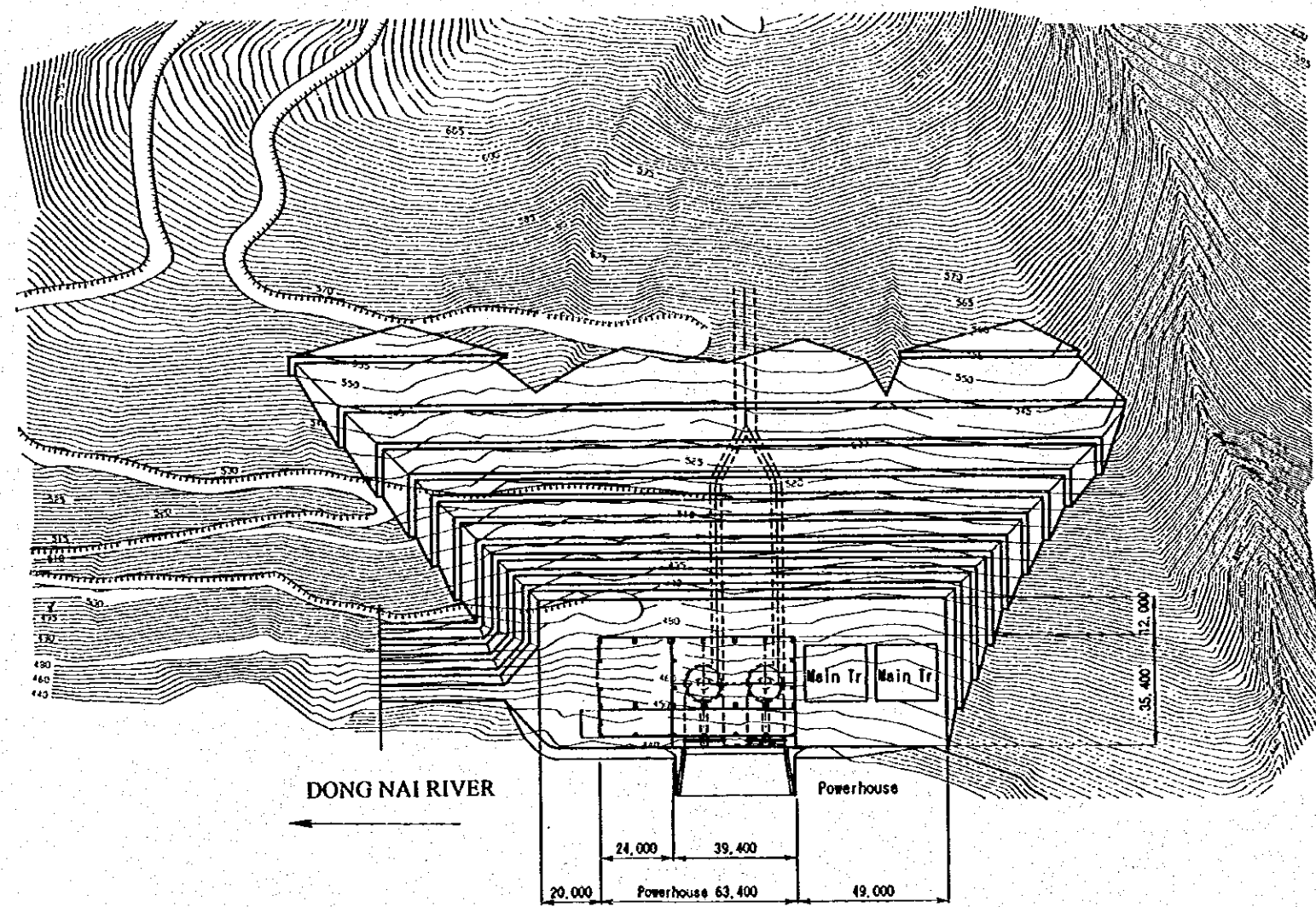
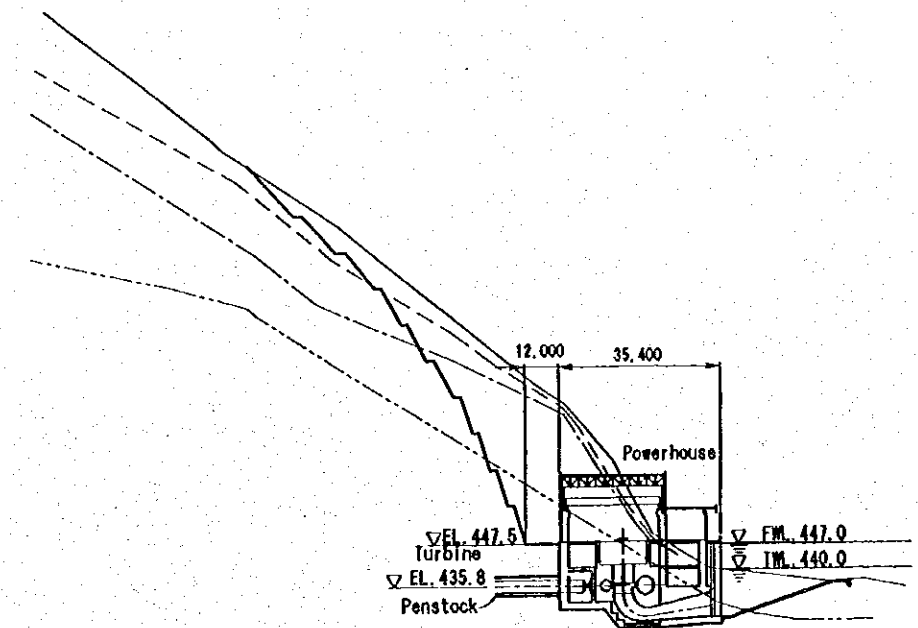


Figure S.20 Plan and Profile of Waterway for Dong Nai No.3 Project



DONG NAI RIVER

P L A N



TRANSVERSE SECTION

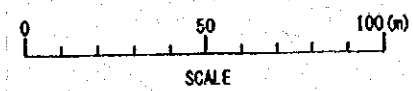
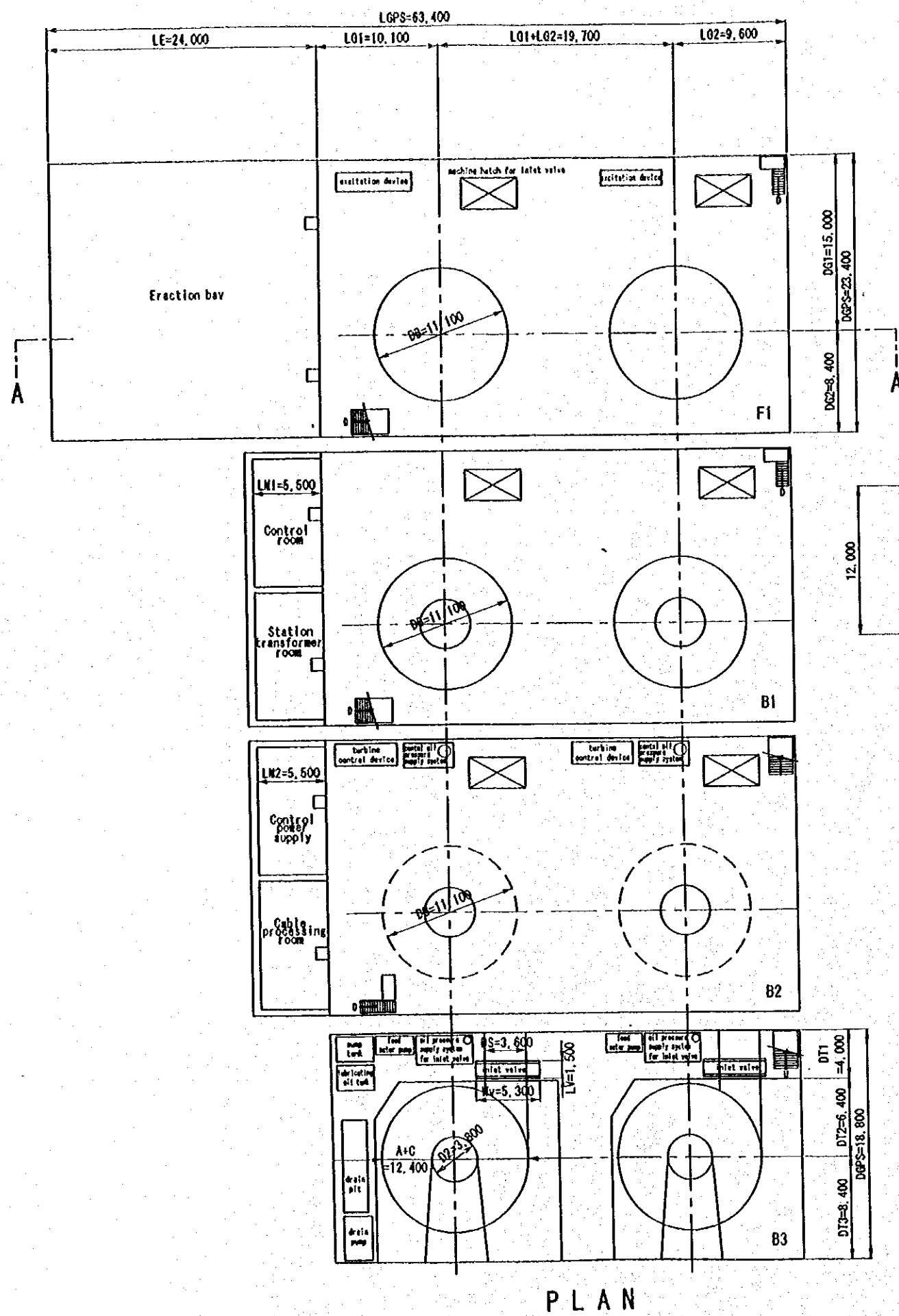
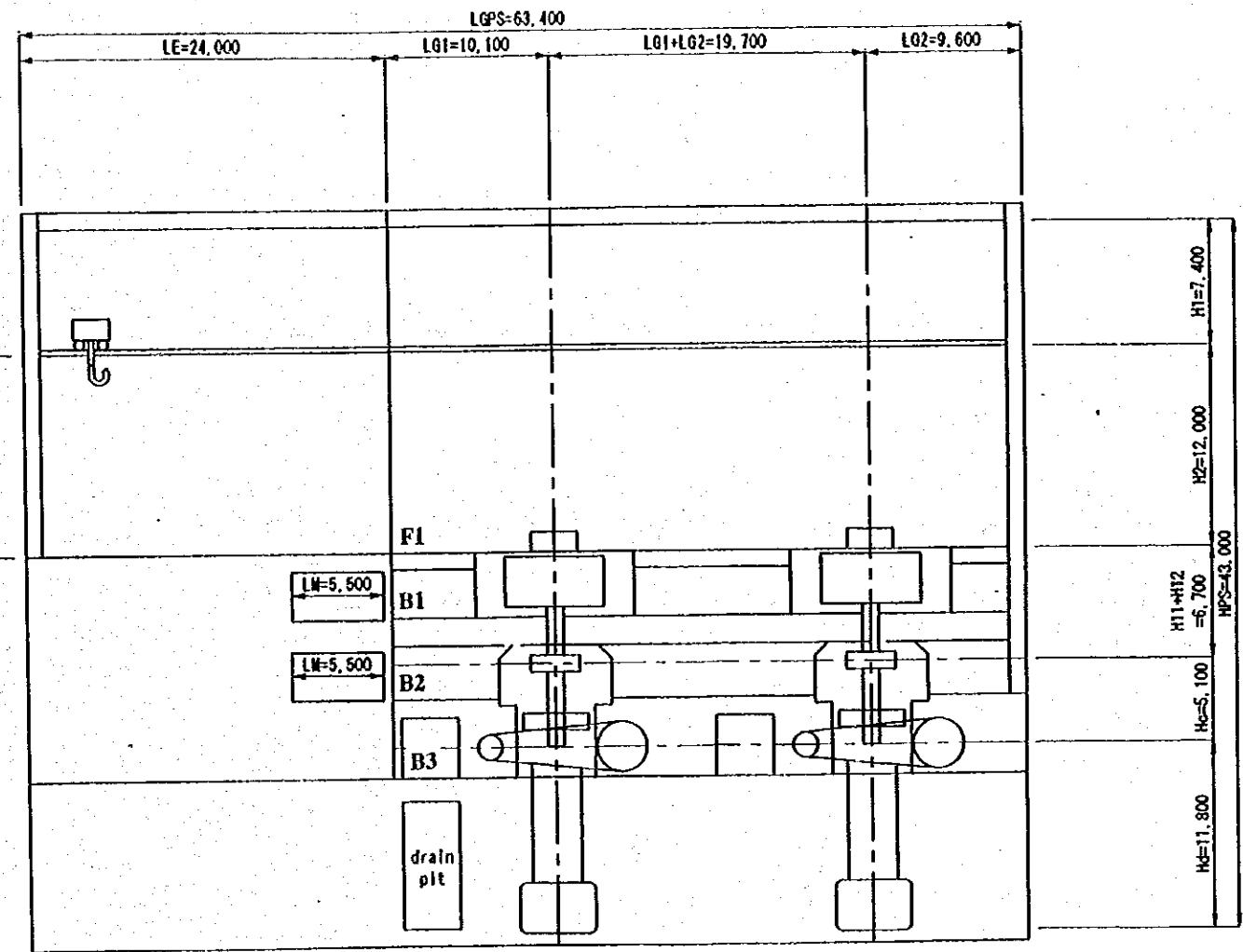


Figure S.21 Plan and Section of Dong Nai No.3 Powerhouse



PLAN



SECTION A-A

Figure S.22 Layout of Generating Equipment for Dong Nai N0.3 Powerhouse

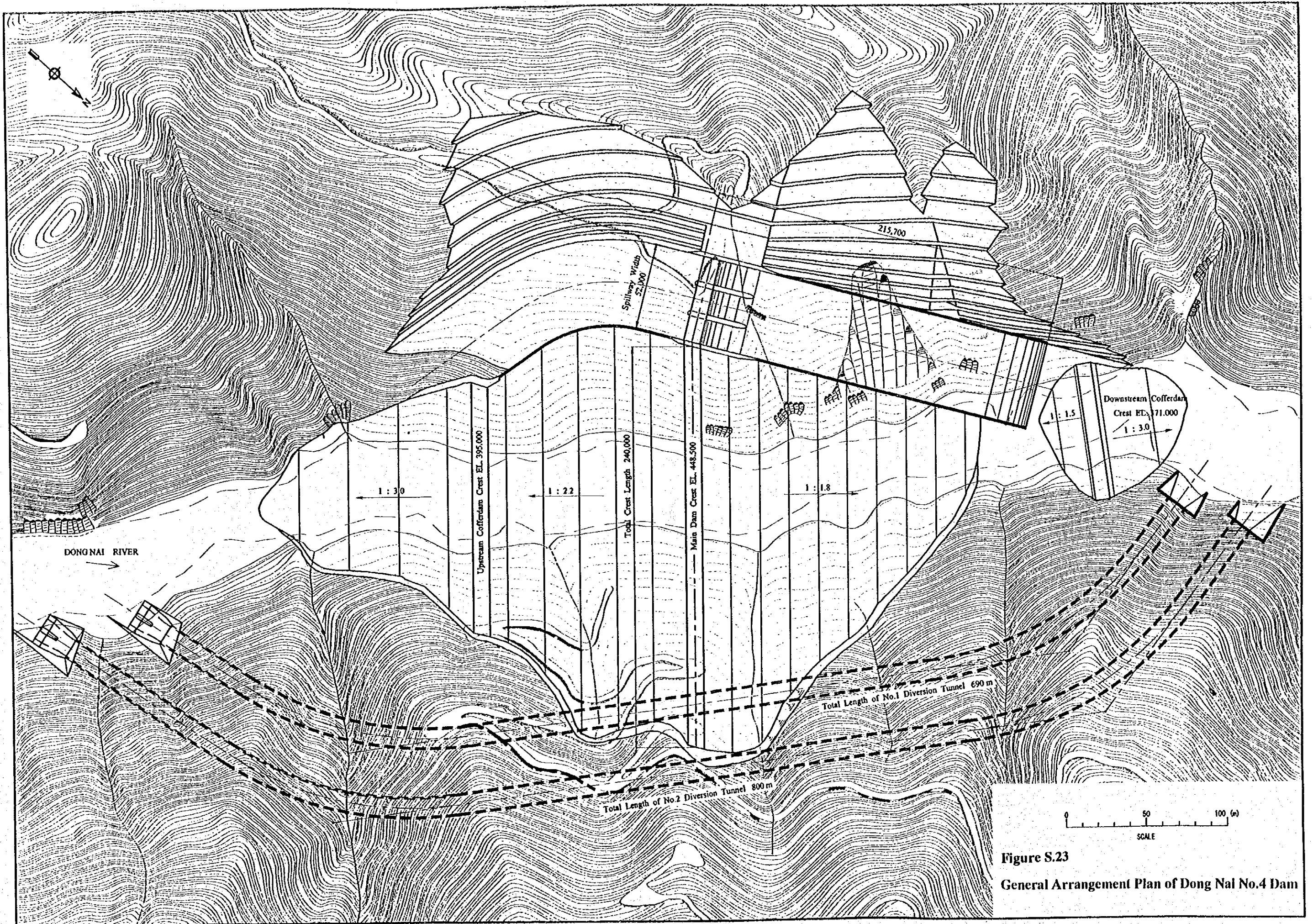


Figure S.23
General Arrangement Plan of Dong Nai No.4 Dam

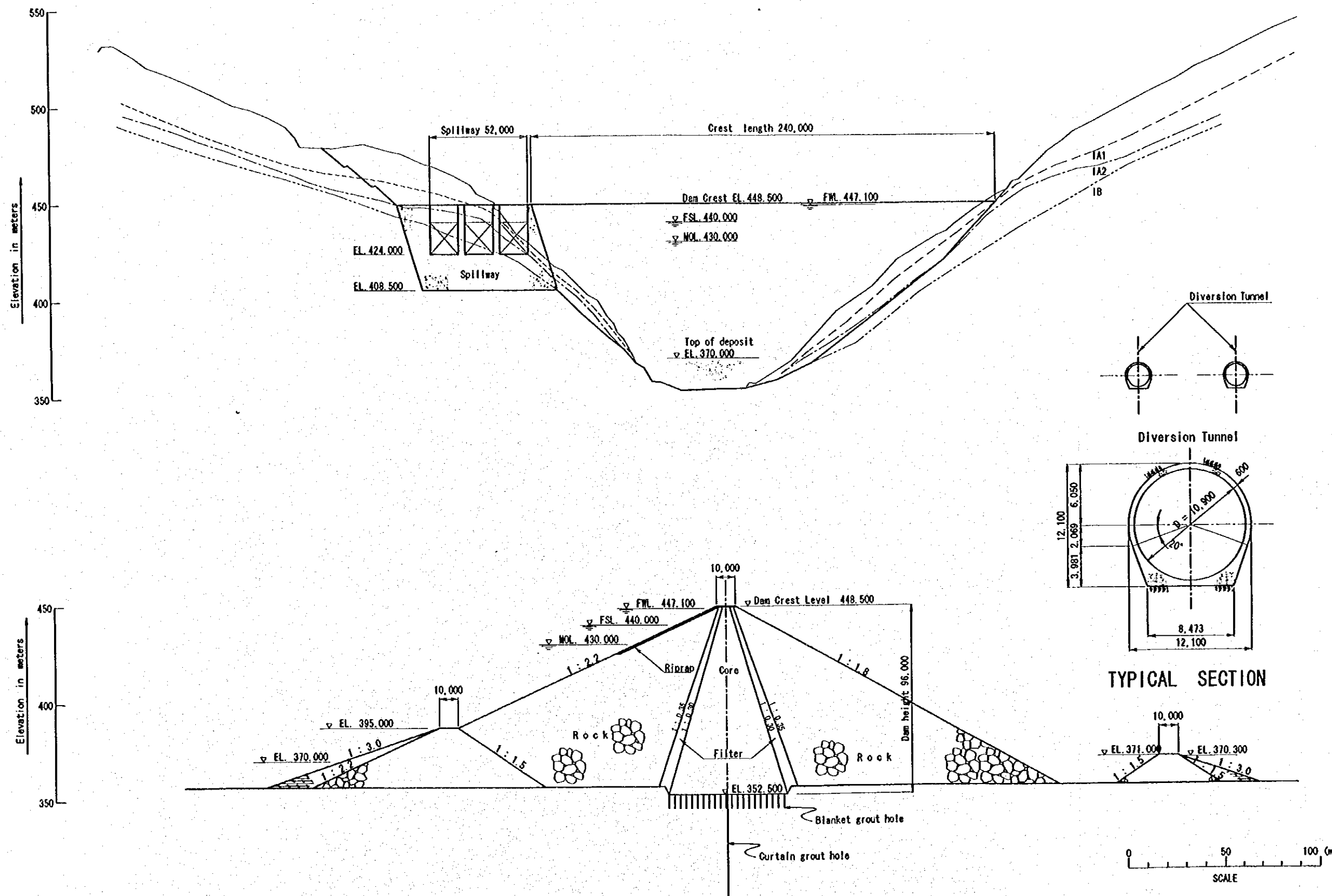


Figure S.24 Typical Section and Profile of Dong Nai No.4 Dam