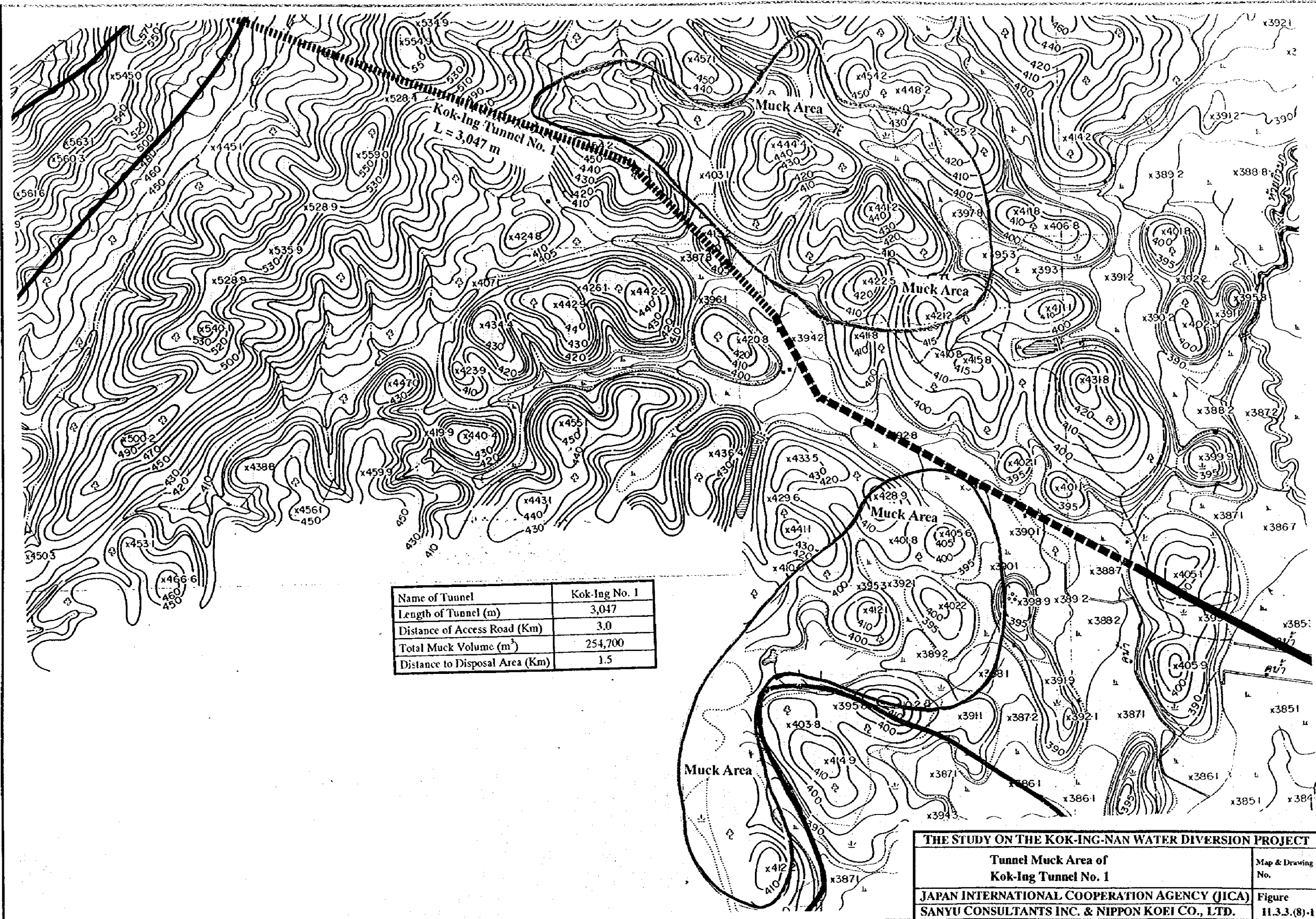
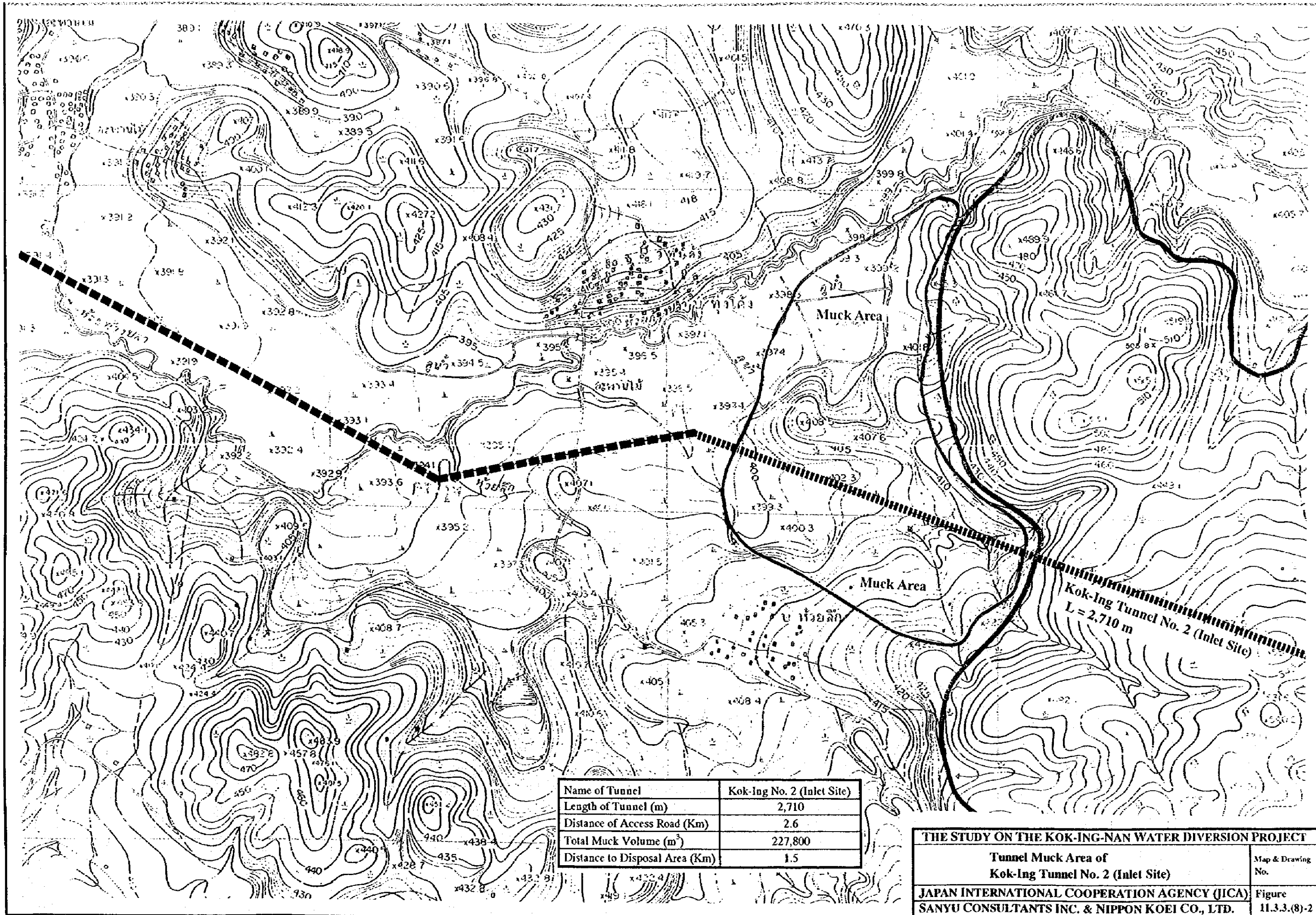


Name of Tunnel	Kok-Ing No. 1
Length of Tunnel (m)	3,047
Distance of Access Road (Km)	3.0
Total Muck Volume (m ³)	254,700
Distance to Disposal Area (Km)	1.5

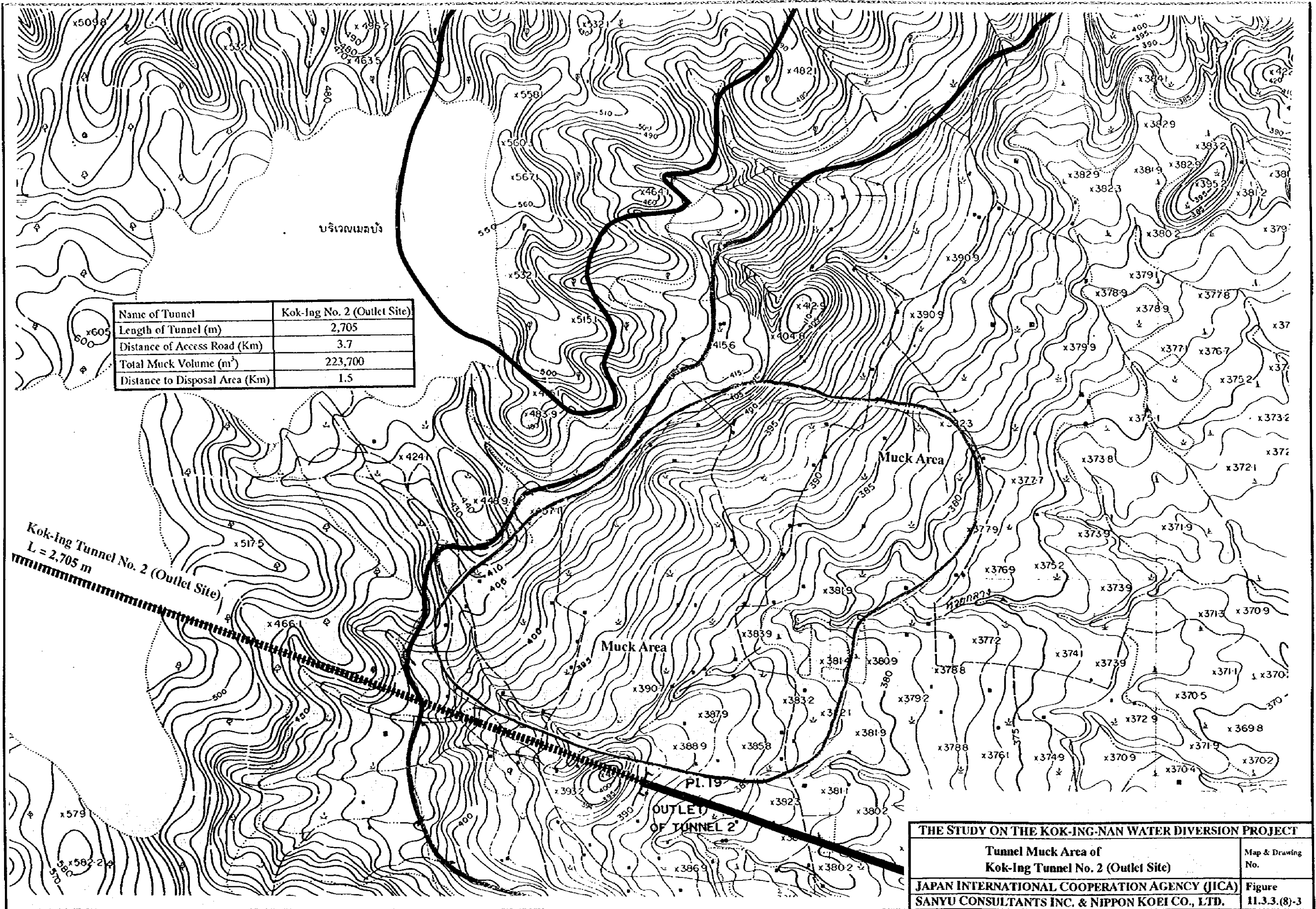
THE STUDY ON THE KOK-ING-NAN WATER DIVERSION PROJECT	
Tunnel Muck Area of Kok-Ing Tunnel No. 1	Map & Drawing No.
JAPAN INTERNATIONAL COOPERATION AGENCY (JICA) SANYU CONSULTANTS INC. & NIPPON KOEI CO., LTD.	Figure 11.3.3.(8)-1





Name of Tunnel	Kok-Ing No. 2 (Inlet Site)
Length of Tunnel (m)	2,710
Distance of Access Road (Km)	2.6
Total Muck Volume (m ³)	227,800
Distance to Disposal Area (Km)	1.5

THE STUDY ON THE KOK-ING-NAN WATER DIVERSION PROJECT	
Tunnel Muck Area of Kok-Ing Tunnel No. 2 (Inlet Site)	Map & Drawing No.
JAPAN INTERNATIONAL COOPERATION AGENCY (JICA) SANYU CONSULTANTS INC. & NIPPON KOEI CO., LTD.	Figure 11.3.3.(8)-2



บริเวณเขลาง

Name of Tunnel	Kok-Ing No. 2 (Outlet Site)
Length of Tunnel (m)	2,705
Distance of Access Road (Km)	3.7
Total Muck Volume (m ³)	223,700
Distance to Disposal Area (Km)	1.5

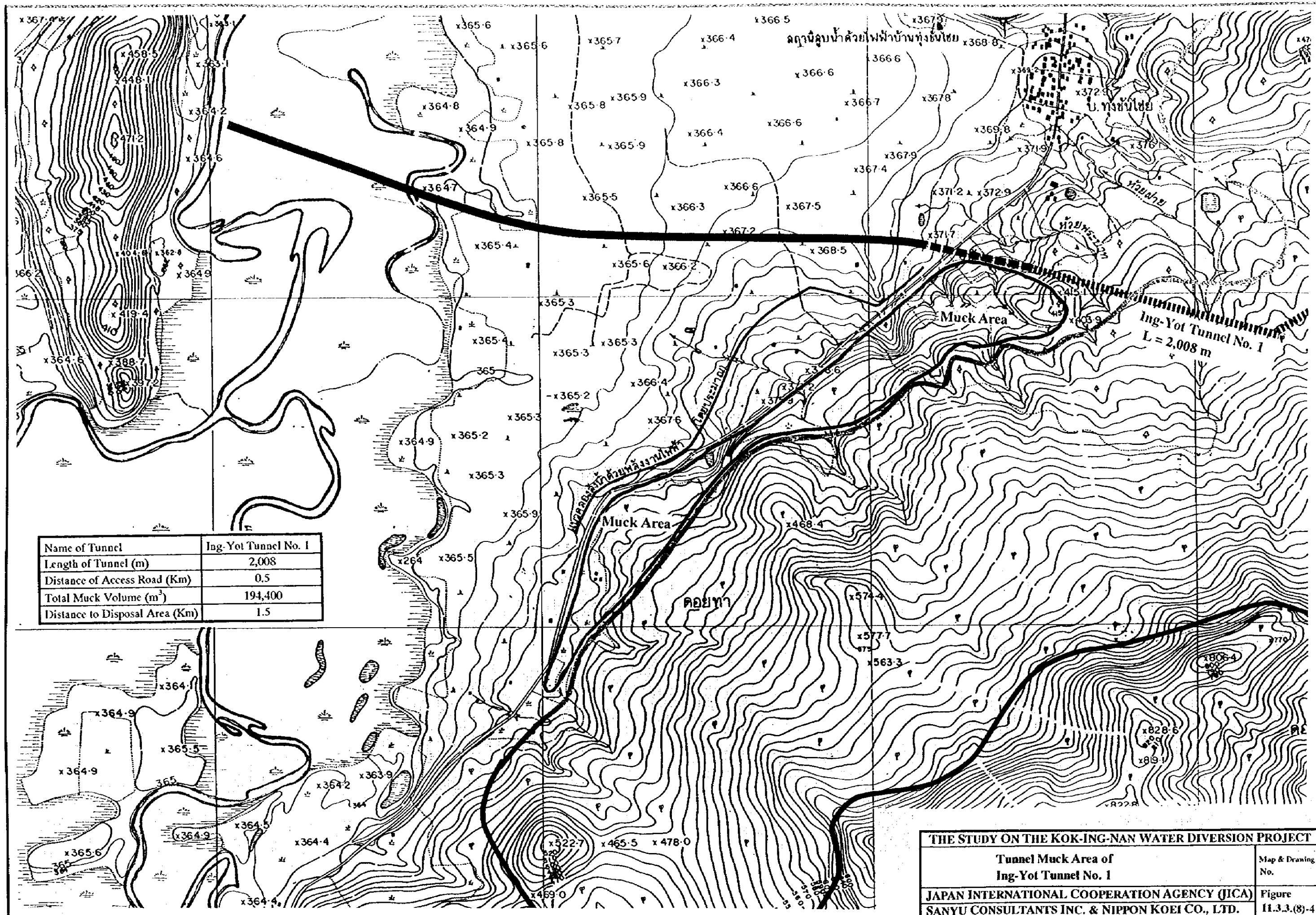
Kok-Ing Tunnel No. 2 (Outlet Site)
L = 2,705 m

Muck Area

Muck Area

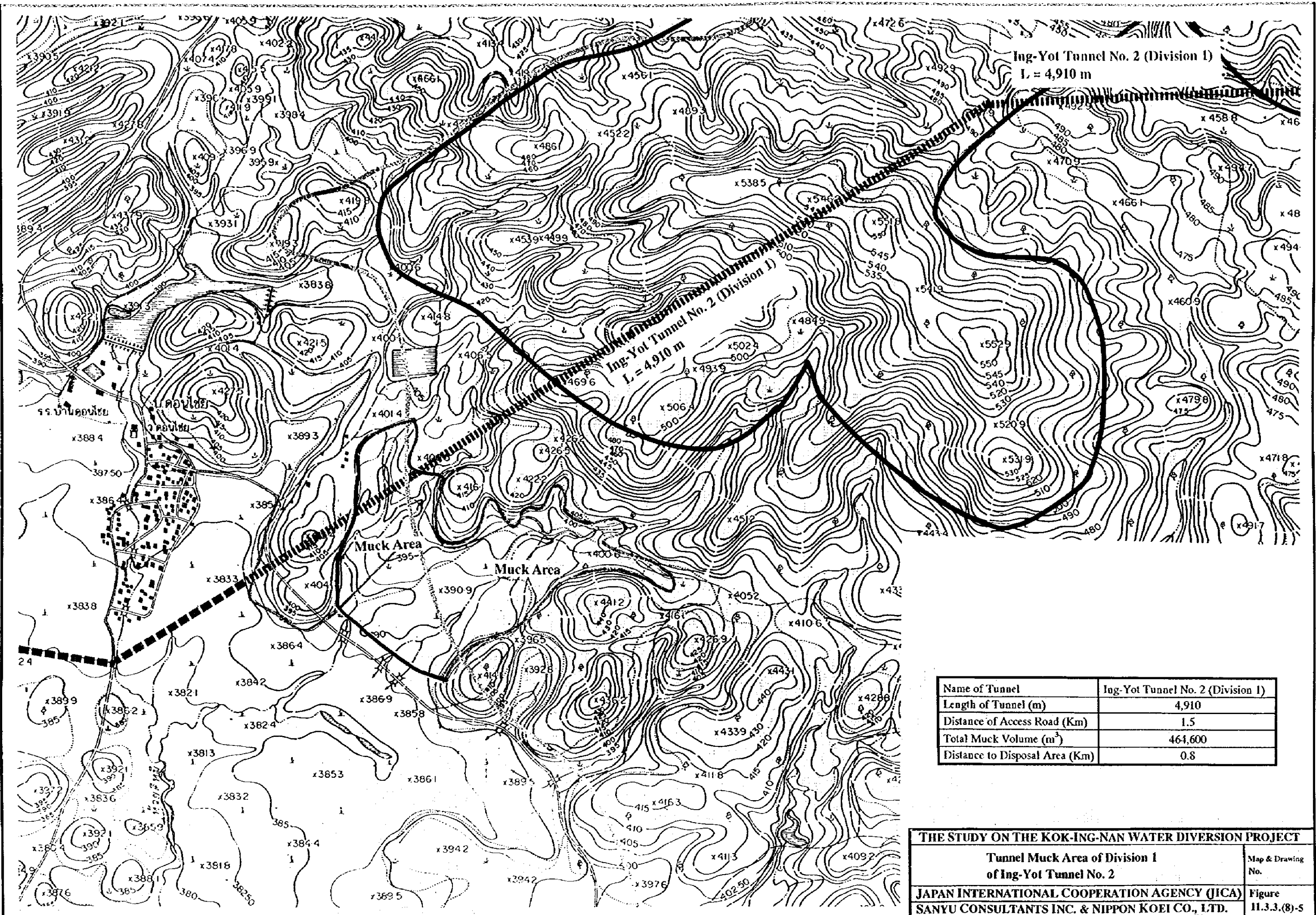
PI. 19
OUTLET OF TUNNEL 2

THE STUDY ON THE KOK-ING-NAN WATER DIVERSION PROJECT	
Tunnel Muck Area of Kok-Ing Tunnel No. 2 (Outlet Site)	Map & Drawing No.
JAPAN INTERNATIONAL COOPERATION AGENCY (JICA) SANYU CONSULTANTS INC. & NIPPON KOEI CO., LTD.	Figure 11.3.3.(8)-3



THE STUDY ON THE KOK-ING-NAN WATER DIVERSION PROJECT

Tunnel Muck Area of Ing-Yot Tunnel No. 1	Map & Drawing No.
JAPAN INTERNATIONAL COOPERATION AGENCY (JICA)	Figure
SANYU CONSULTANTS INC. & NIPPON KOEI CO., LTD.	11.3.3.(8)-4



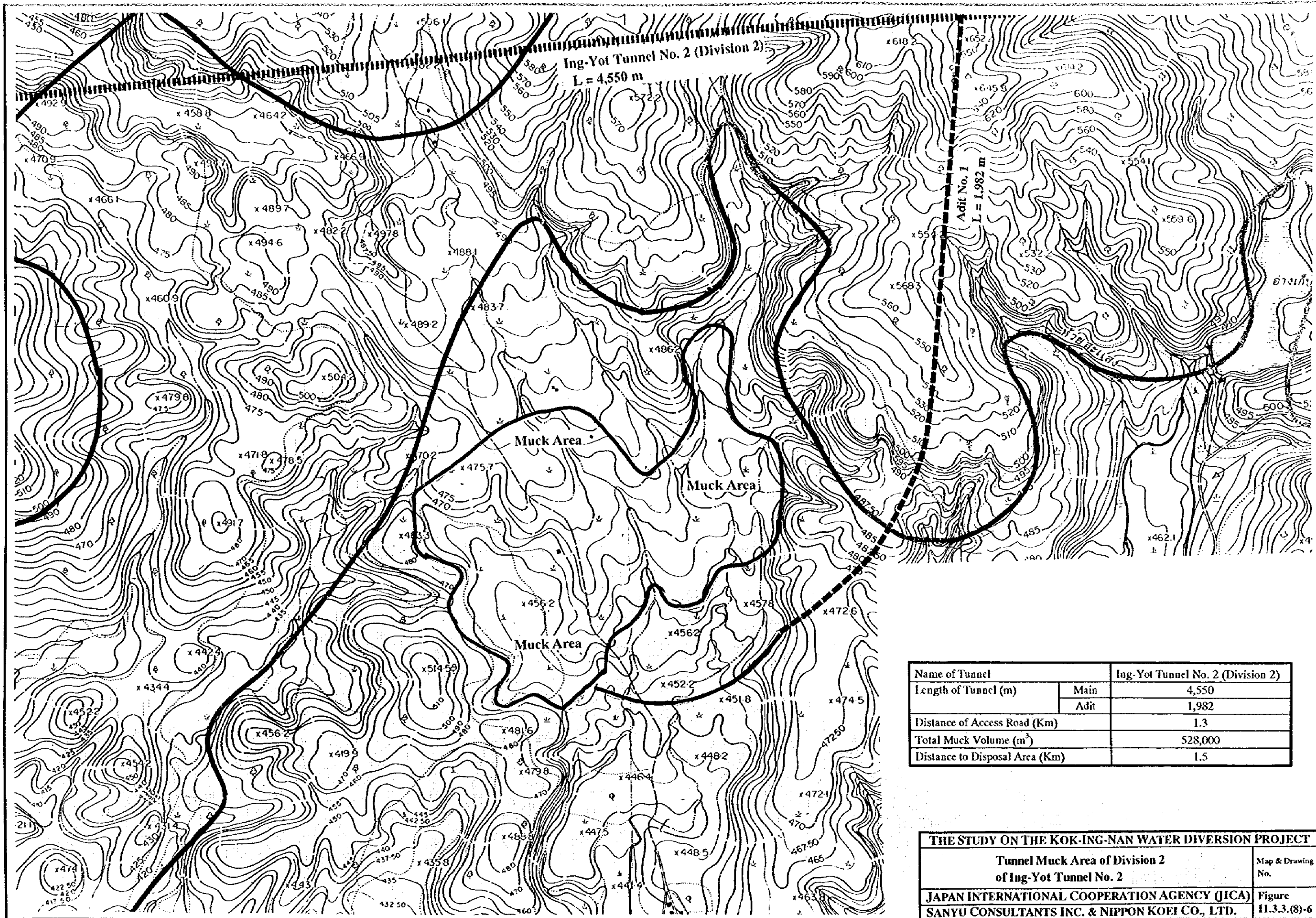
Name of Tunnel	Ing-Yot Tunnel No. 2 (Division 1)
Length of Tunnel (m)	4,910
Distance of Access Road (Km)	1.5
Total Muck Volume (m ³)	464,600
Distance to Disposal Area (Km)	0.8

THE STUDY ON THE KOK-ING-NAN WATER DIVERSION PROJECT

**Tunnel Muck Area of Division 1
of Ing-Yot Tunnel No. 2**

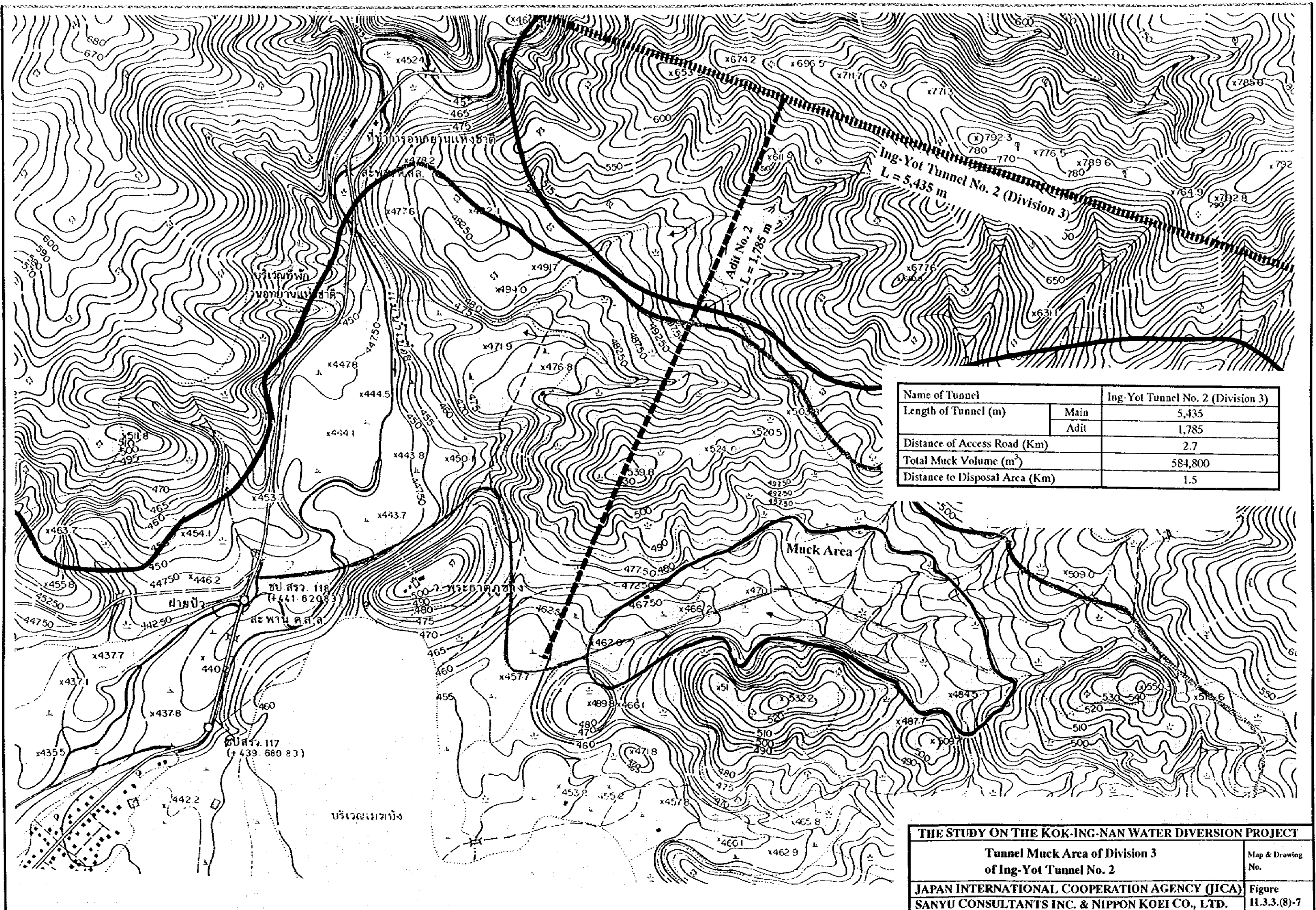
**JAPAN INTERNATIONAL COOPERATION AGENCY (JICA)
SANYU CONSULTANTS INC. & NIPPON KOEI CO., LTD.**

Map & Drawing No.
Figure 11.3.3.(B)-5



Name of Tunnel		Ing-Yot Tunnel No. 2 (Division 2)
Length of Tunnel (m)	Main	4,550
	Adit	1,982
Distance of Access Road (Km)		1.3
Total Muck Volume (m ³)		528,000
Distance to Disposal Area (Km)		1.5

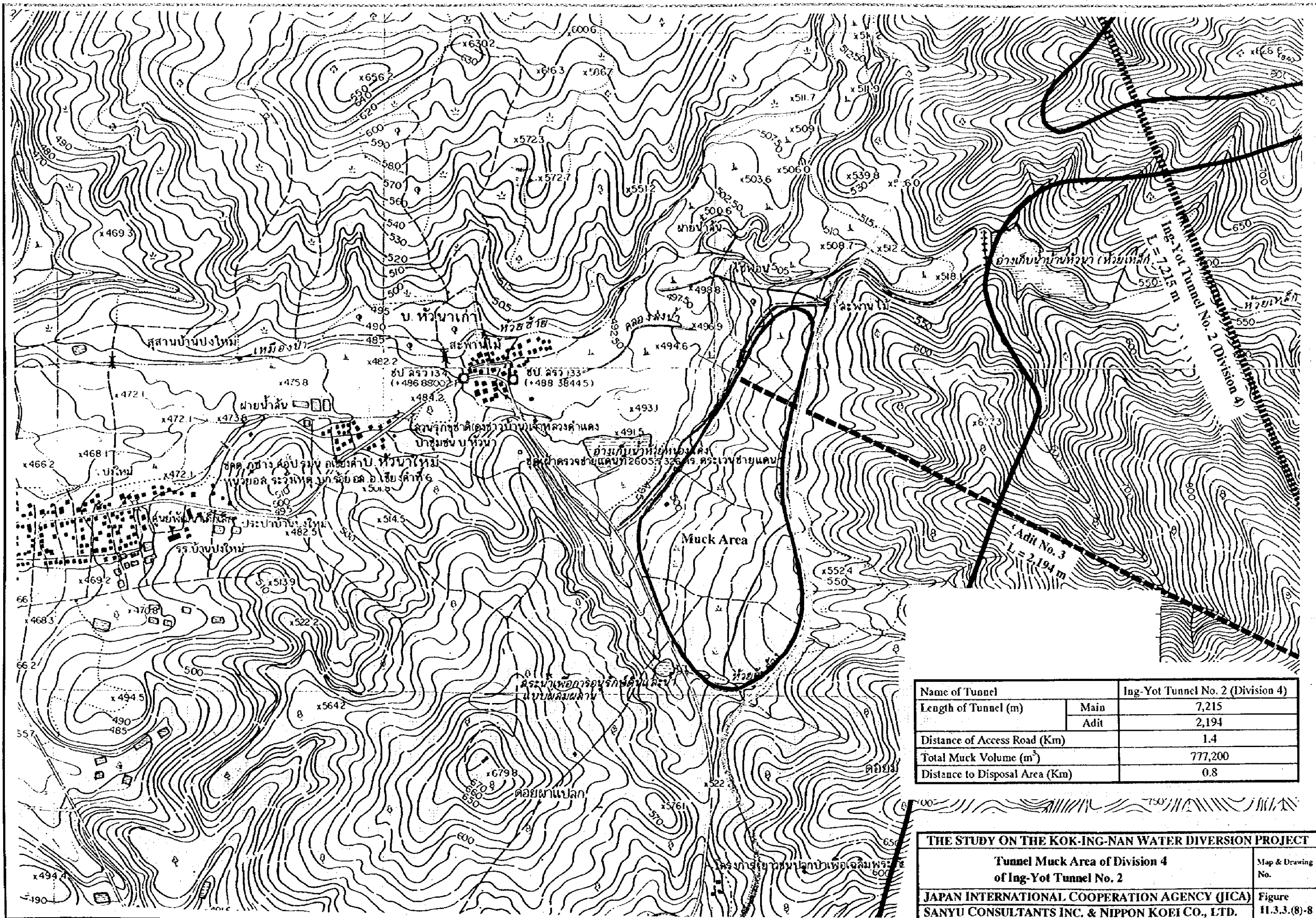
THE STUDY ON THE KOK-ING-NAN WATER DIVERSION PROJECT	
Tunnel Muck Area of Division 2 of Ing-Yot Tunnel No. 2	Map & Drawing No.
JAPAN INTERNATIONAL COOPERATION AGENCY (JICA) SANYU CONSULTANTS INC. & NIPPON KOEI CO., LTD.	Figure 11.3.3.(8)-6



Name of Tunnel		Ing-Yot Tunnel No. 2 (Division 3)
Length of Tunnel (m)	Main	5,435
	Adit	1,785
Distance of Access Road (Km)		2.7
Total Muck Volume (m ³)		584,800
Distance to Disposal Area (Km)		1.5

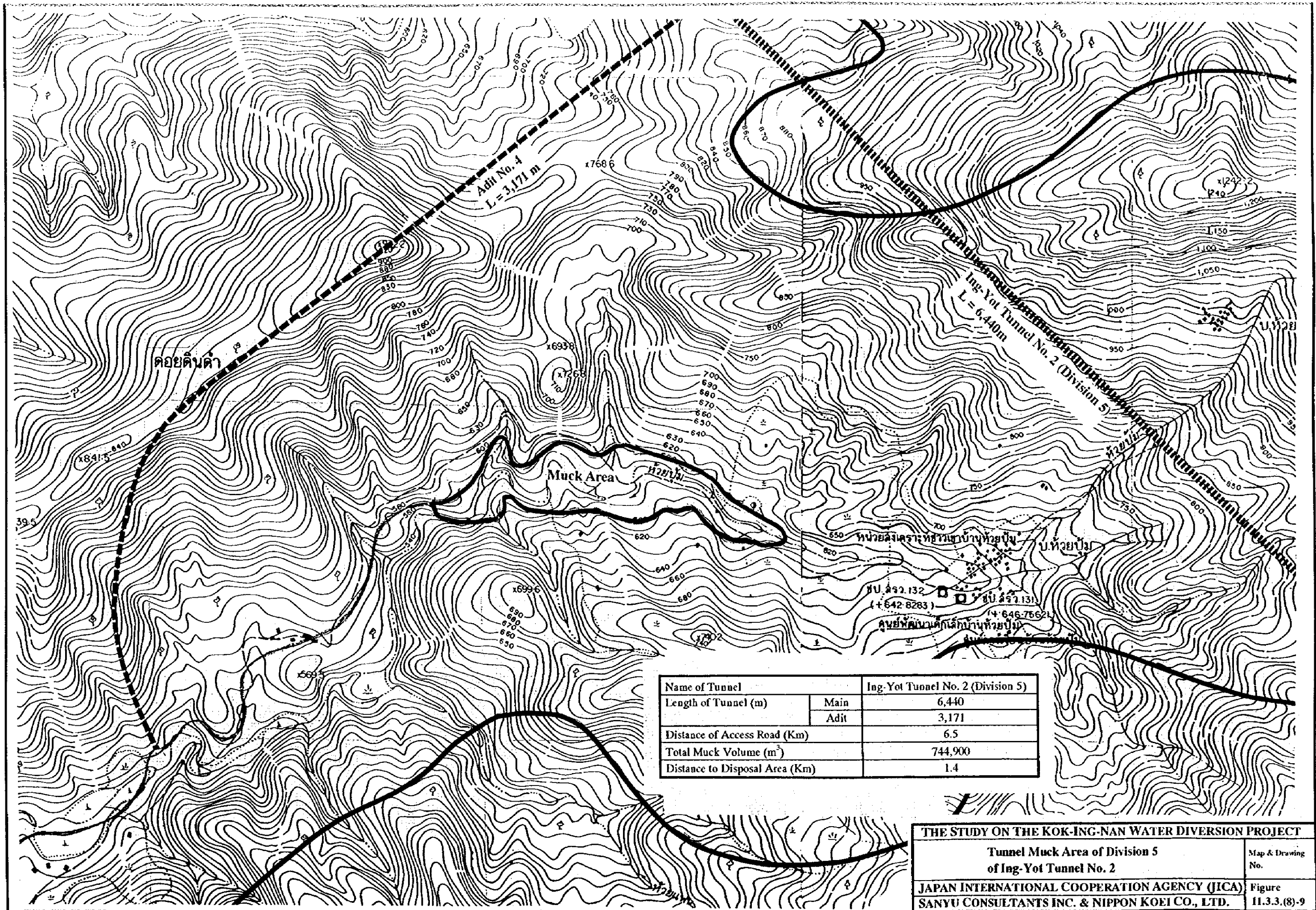
THE STUDY ON THE KOK-ING-NAN WATER DIVERSION PROJECT

Tunnel Muck Area of Division 3 of Ing-Yot Tunnel No. 2	Map & Drawing No.
JAPAN INTERNATIONAL COOPERATION AGENCY (JICA) SANYU CONSULTANTS INC. & NIPPON KOEI CO., LTD.	Figure 11.3.3.(8)-7



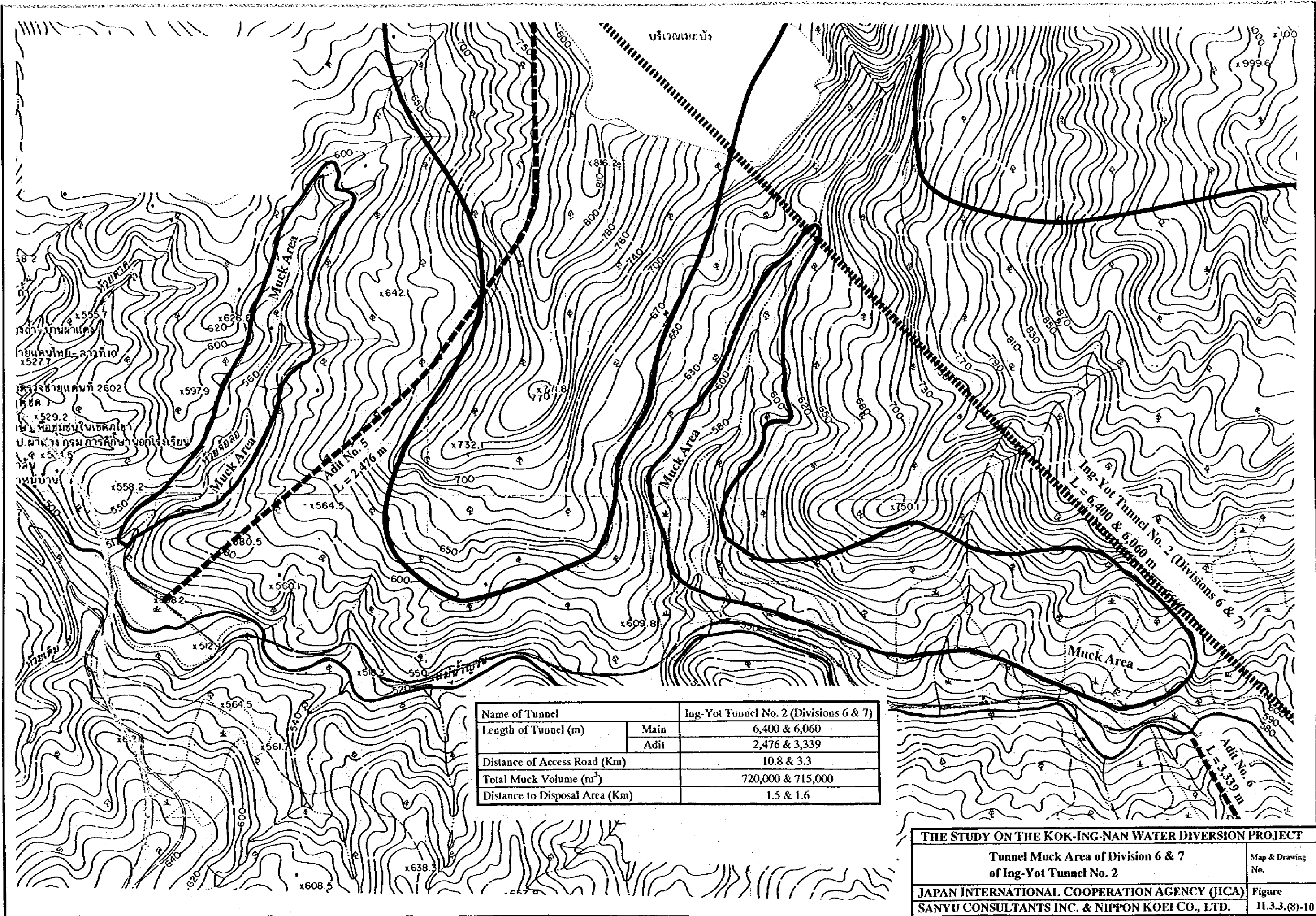
Name of Tunnel		Ing-Yot Tunnel No. 2 (Division 4)
Length of Tunnel (m)	Main	7,215
	Adit	2,194
Distance of Access Road (Km)		1.4
Total Muck Volume (m ³)		777,200
Distance to Disposal Area (Km)		0.8

THE STUDY ON THE KOK-ING-NAN WATER DIVERSION PROJECT	
Tunnel Muck Area of Division 4 of Ing-Yot Tunnel No. 2	Map & Drawing No.
JAPAN INTERNATIONAL COOPERATION AGENCY (JICA)	Figure
SANYU CONSULTANTS INC. & NIPPON KOEI CO., LTD.	11.3.3.(8)-8



Name of Tunnel		Ing-Yot Tunnel No. 2 (Division 5)
Length of Tunnel (m)	Main	6,440
	Adit	3,171
Distance of Access Road (Km)		6.5
Total Muck Volume (m ³)		744,900
Distance to Disposal Area (Km)		1.4

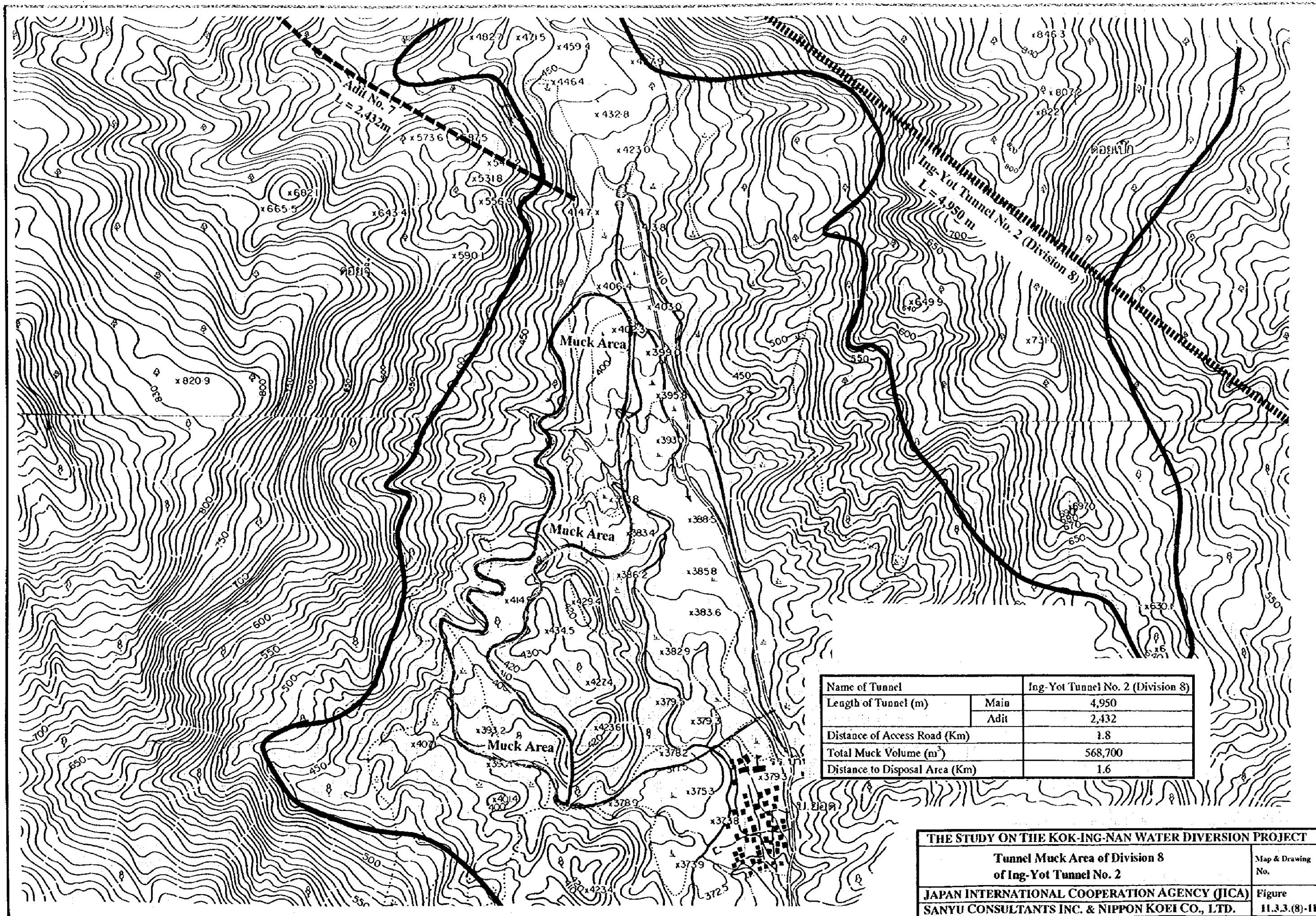
THE STUDY ON THE KOK-ING-NAN WATER DIVERSION PROJECT		
Tunnel Muck Area of Division 5 of Ing-Yot Tunnel No. 2		Map & Drawing No.
JAPAN INTERNATIONAL COOPERATION AGENCY (JICA)		Figure
SANYU CONSULTANTS INC. & NIPPON KOEI CO., LTD.		11.3.3.(8)-9



Name of Tunnel		Ing-Yot Tunnel No. 2 (Divisions 6 & 7)
Length of Tunnel (m)	Main	6,400 & 6,060
	Adit	2,476 & 3,339
Distance of Access Road (Km)		10.8 & 3.3
Total Muck Volume (m ³)		720,000 & 715,000
Distance to Disposal Area (Km)		1.5 & 1.6

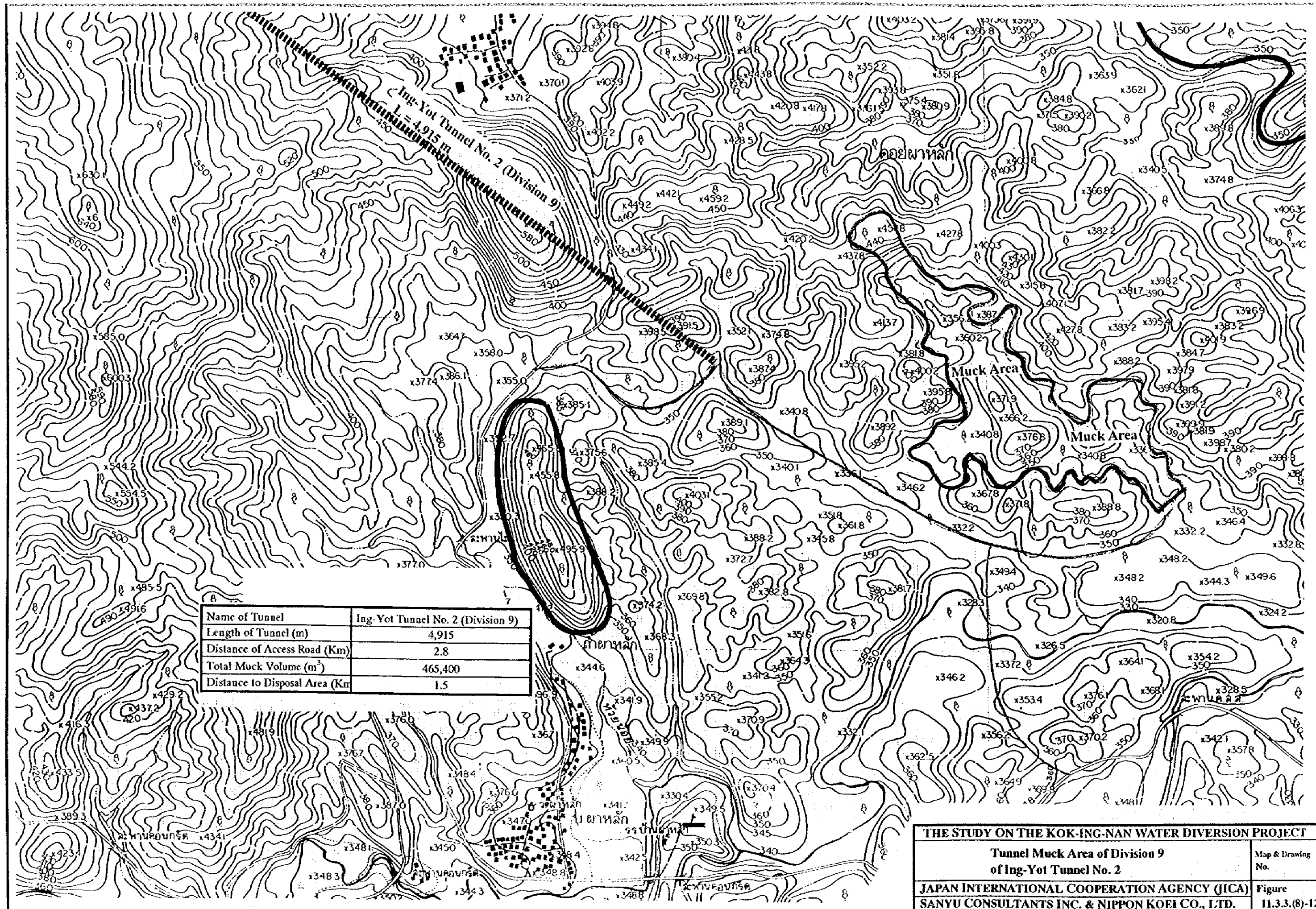
THE STUDY ON THE KOK-ING-NAN WATER DIVERSION PROJECT

Tunnel Muck Area of Division 6 & 7 of Ing-Yot Tunnel No. 2	Map & Drawing No.
JAPAN INTERNATIONAL COOPERATION AGENCY (JICA) SANYU CONSULTANTS INC. & NIPPON KOEI CO., LTD.	Figure 11.3.3.(8)-10



Name of Tunnel	Ing-Yot Tunnel No. 2 (Division 8)	
Length of Tunnel (m)	Main	4,950
	Adit	2,432
Distance of Access Road (Km)	1.8	
Total Muck Volume (m ³)	568,700	
Distance to Disposal Area (Km)	1.6	

THE STUDY ON THE KOK-ING-NAN WATER DIVERSION PROJECT	
Tunnel Muck Area of Division 8 of Ing-Yot Tunnel No. 2	Map & Drawing No.
JAPAN INTERNATIONAL COOPERATION AGENCY (JICA)	Figure
SANYU CONSULTANTS INC. & NIPPON KOEI CO., LTD.	11.3.3.(8)-11



THE STUDY ON THE KOK-ING-NAN WATER DIVERSION PROJECT

Tunnel Muck Area of Division 9 of Ing-Yot Tunnel No. 2

JAPAN INTERNATIONAL COOPERATION AGENCY (JICA)
 SANYU CONSULTANTS INC. & NIPPON KOEI CO., LTD.

Map & Drawing No.
 Figure 11.3.3.(8)-12



JICA