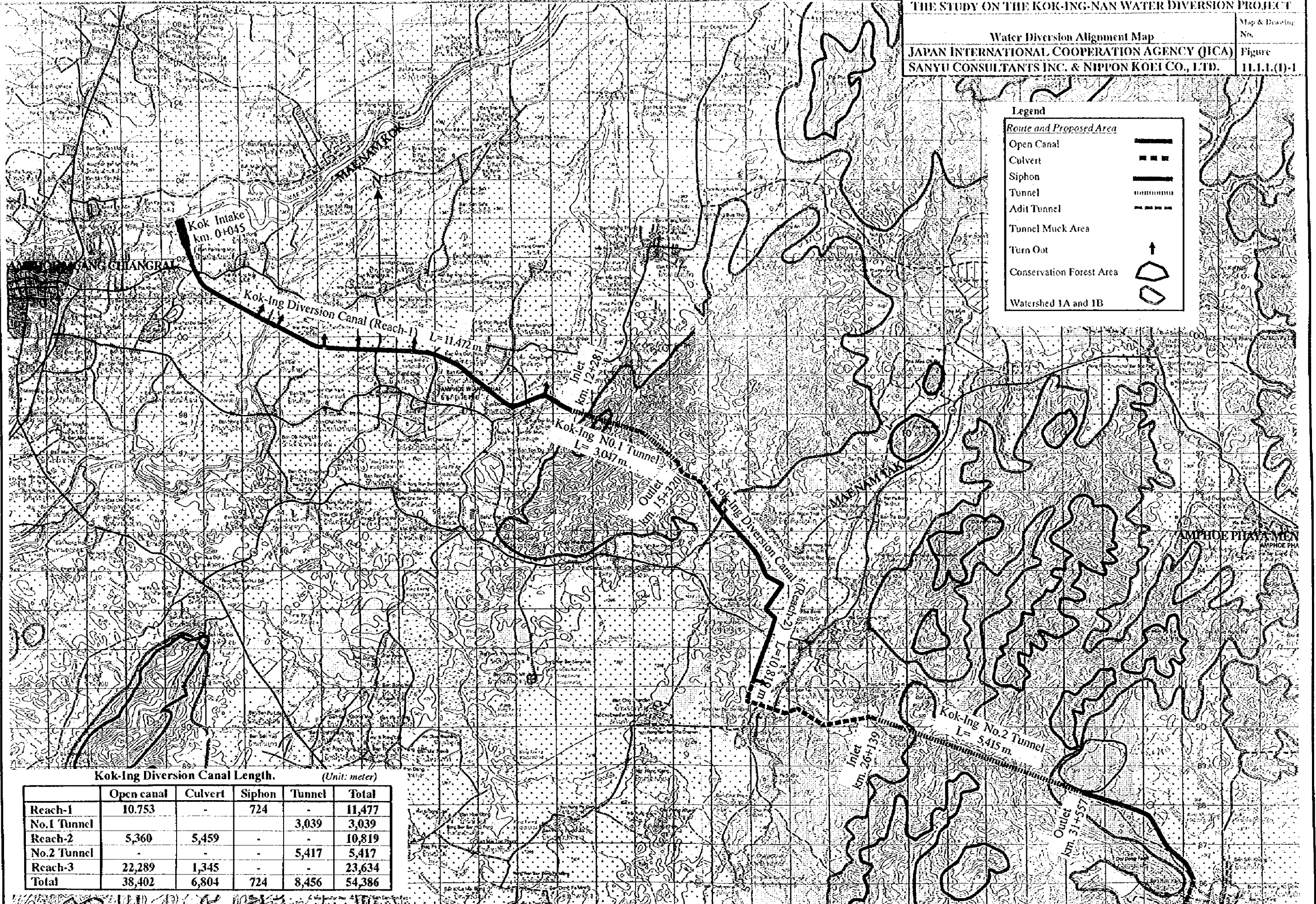


Legend

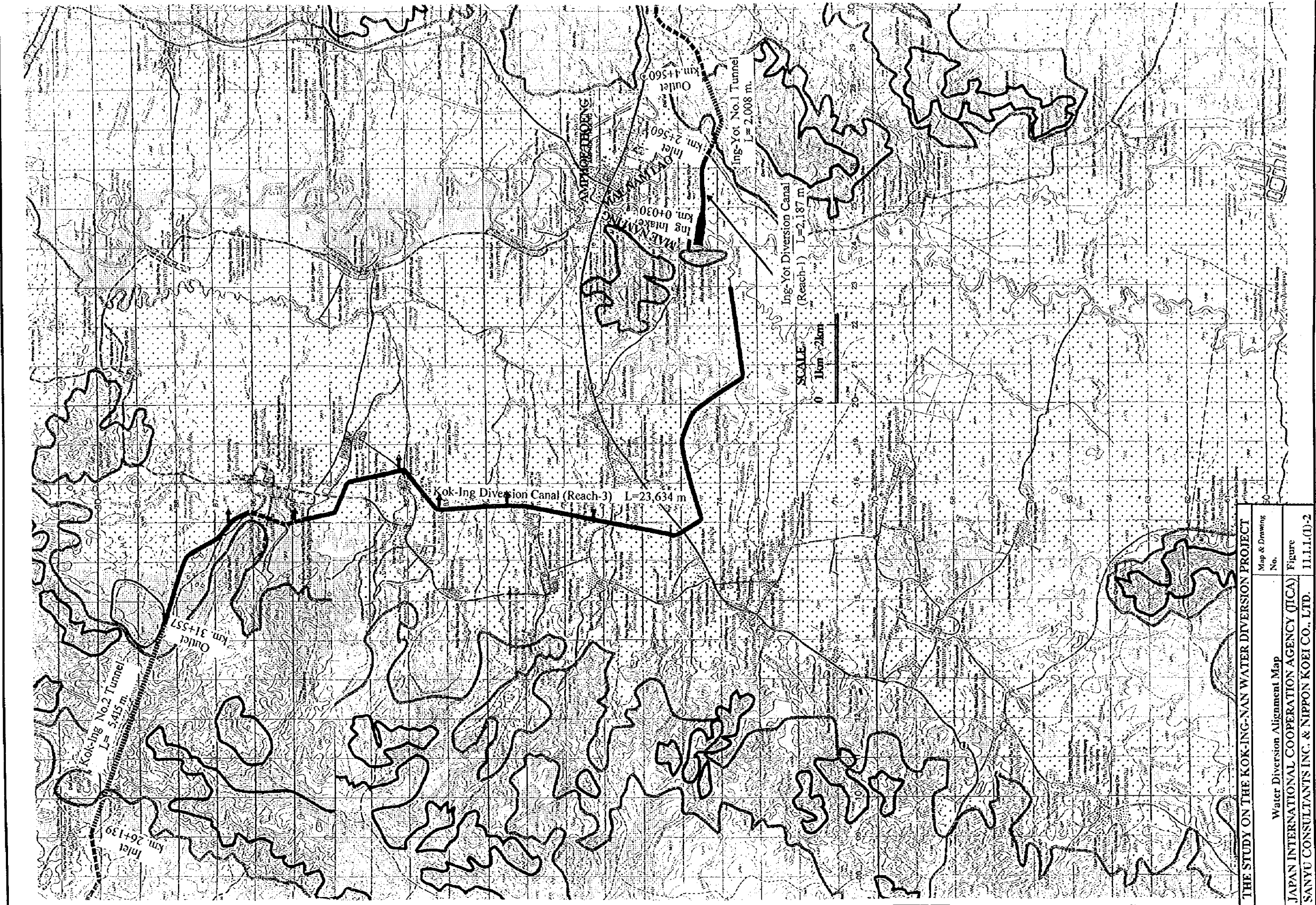
Route and Proposed Area

- Open Canal
- Culvert
- Siphon
- Tunnel
- Adit Tunnel
- Tunnel Muck Area
- Turn Out
- Conservation Forest Area
- Watershed 1A and 1B



Kok-Ing Diversion Canal Length. (Unit: meter)

	Open canal	Culvert	Siphon	Tunnel	Total
Reach-1	10,753	-	724	-	11,477
No.1 Tunnel	-	-	-	3,039	3,039
Reach-2	5,360	5,459	-	-	10,819
No.2 Tunnel	-	-	-	5,417	5,417
Reach-3	22,289	1,345	-	-	23,634
Total	38,402	6,804	724	8,456	54,386



THE STUDY ON THE KOK-ING-NAN WATER DIVERSION PROJECT

Water Diversion Alignment Map
 Map & Drawing No.

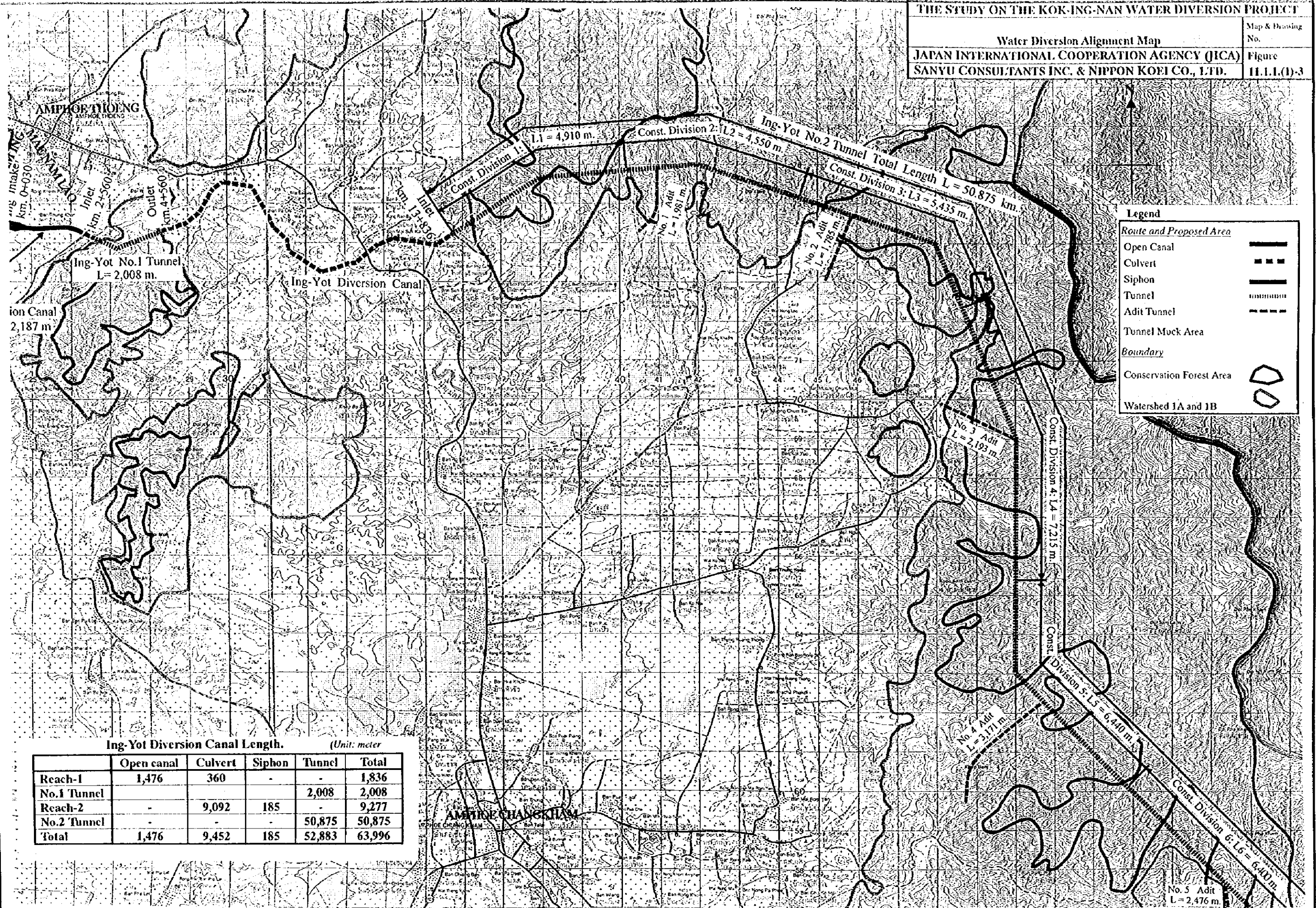
JAPAN INTERNATIONAL COOPERATION AGENCY (JICA)
 SANYU CONSULTANTS INC. & NIPPON KOEI CO., LTD.

Figure
 11.1.1.(1)-2

THE STUDY ON THE KOK-ING-NAN WATER DIVERSION PROJECT

Water Diversion Alignment Map
 JAPAN INTERNATIONAL COOPERATION AGENCY (JICA)
 SANYU CONSULTANTS INC. & NIPPON KOEI CO., LTD.

Map & Drawing No.
 Figure
 H.1.1.(1)-3



Legend

Route and Proposed Area

- Open Canal
- Culvert
- Siphon
- Tunnel
- Adit Tunnel
- Tunnel Mock Area

Boundary

- Conservation Forest Area
- Watershed 1A and 1B

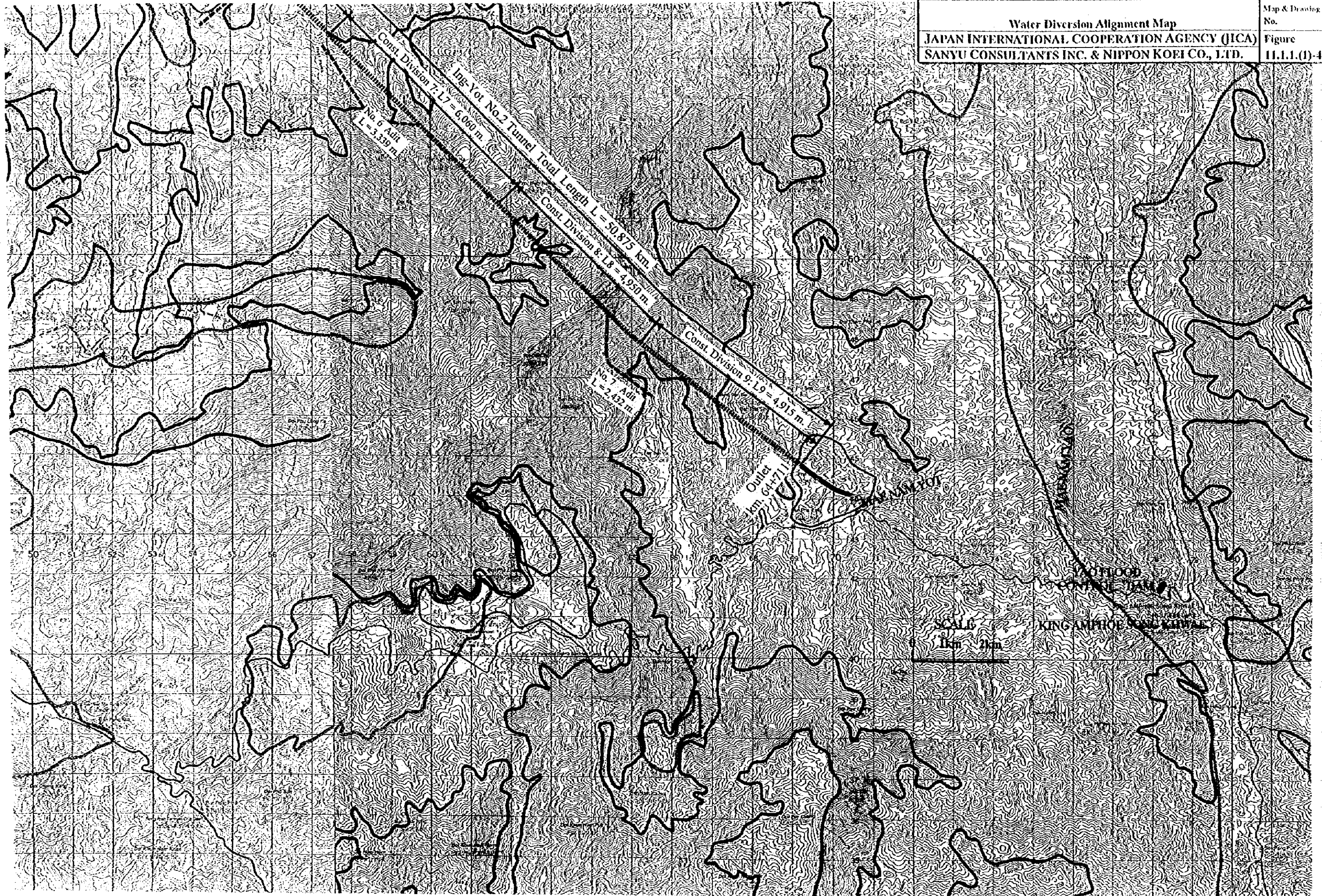
Ing-Yot Diversion Canal Length. (Unit: meter)

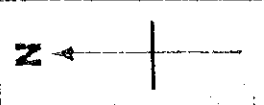
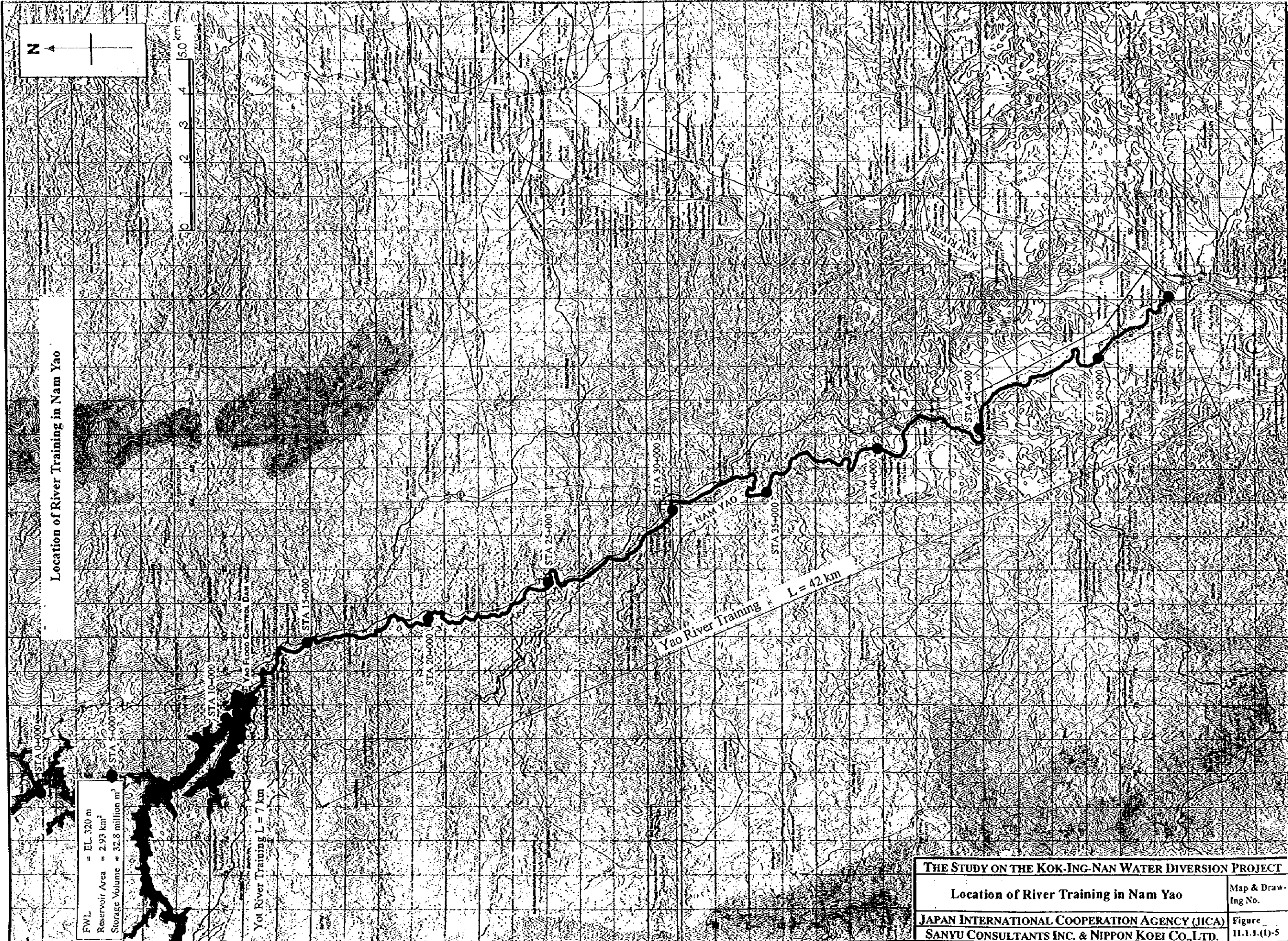
	Open canal	Culvert	Siphon	Tunnel	Total
Reach-1	1,476	360	-	-	1,836
No.1 Tunnel	-	-	-	2,008	2,008
Reach-2	-	9,092	185	-	9,277
No.2 Tunnel	-	-	-	50,875	50,875
Total	1,476	9,452	185	52,883	63,996

THE STUDY ON THE KOK-ING-NAN WATER DIVERSION PROJECT

Water Diversion Alignment Map
JAPAN INTERNATIONAL COOPERATION AGENCY (JICA)
SANYU CONSULTANTS INC. & NIPPON KOEI CO., LTD.

Map & Drawing
No.
Figure
11.1.1.(D)-4





0 1 2 3 4 5.0 km

Location of River Training in Nam Yao

FWL = EL. 320 m
 Reservoir Area = 2.93 km²
 Storage Volume = 32.8 million m³

Yao River Training L = 7 km

Yao River Training L = 42 km

THE STUDY ON THE KOK-ING-NAN WATER DIVERSION PROJECT	
Location of River Training in Nam Yao	
JAPAN INTERNATIONAL COOPERATION AGENCY (JICA)	Map & Drawing No.
SANYU CONSULTANTS INC. & NIPPON KOEI CO., LTD.	Figure 11.1.1.(1)-5