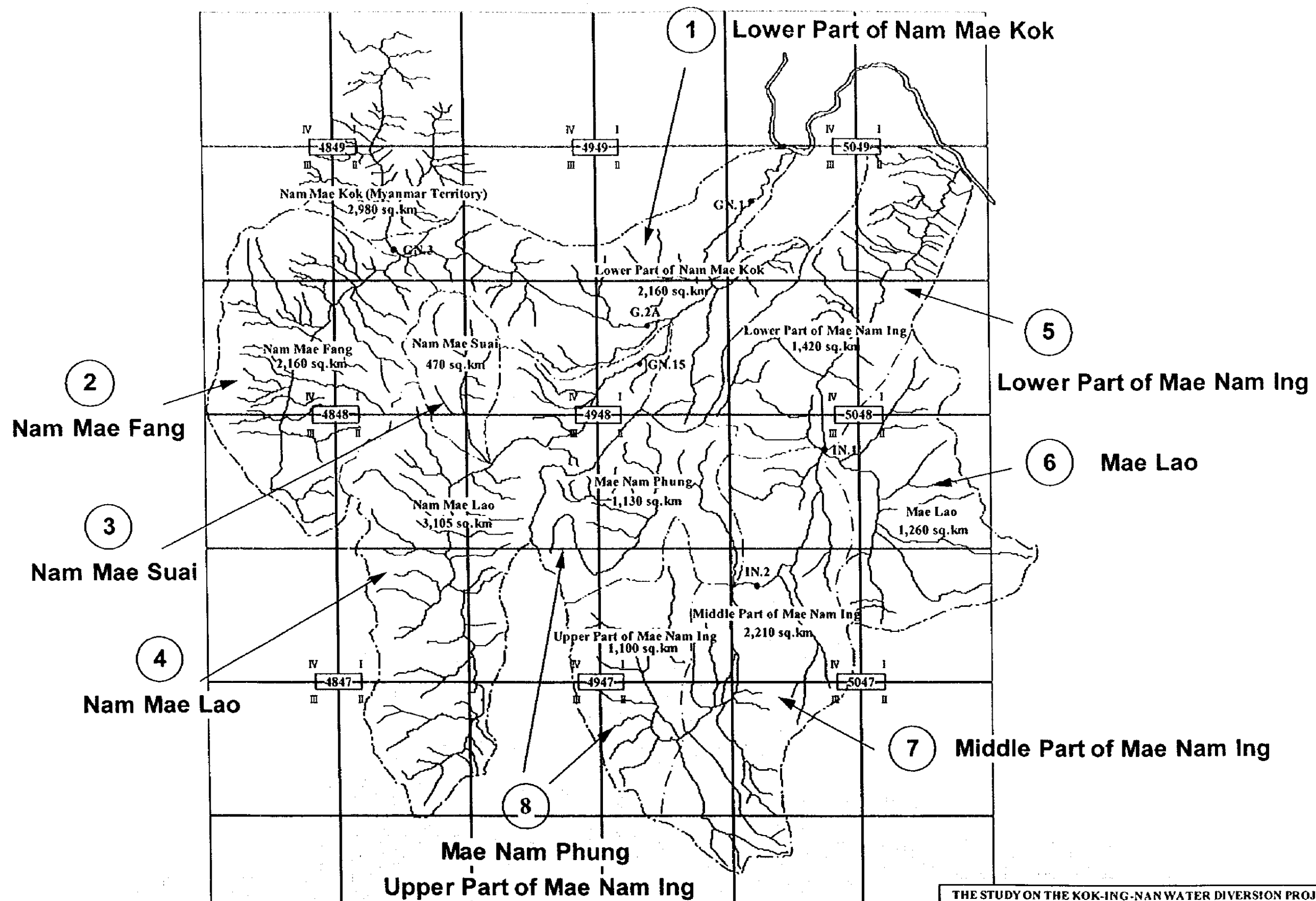
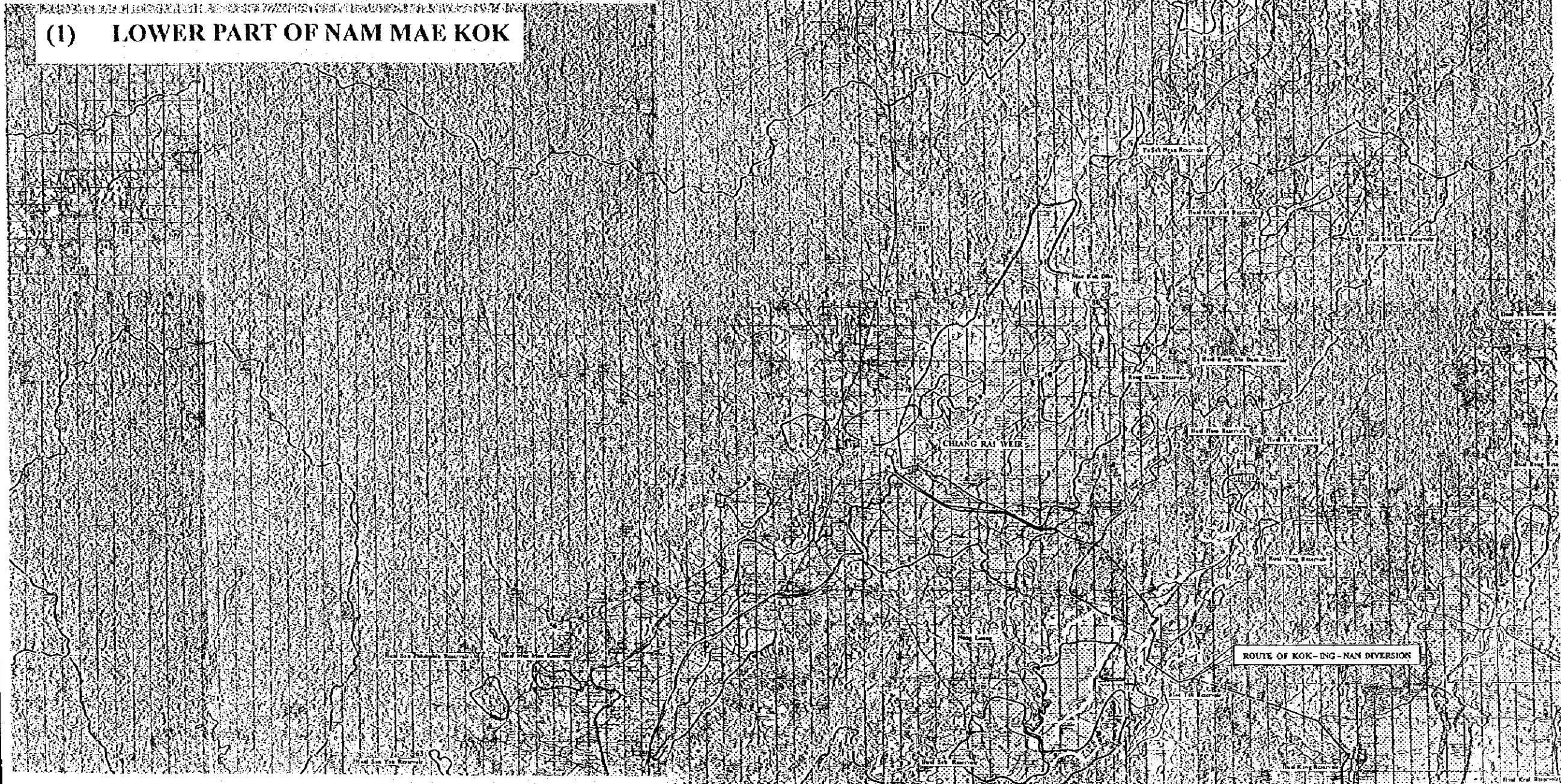


PART IV	EXISTING, PROPOSED AND POTENTIAL DEVELOPMENT
IV-1	Schematic Diagram of the Kok and Ing Basins
IV-2	Existing, Proposed and Potential Irrigation Development in the Lower Nam Mae Kok Basin
IV-3	Existing, Proposed and Potential Irrigation Development in the Nam Mae Fang Basin
IV-4	Existing, Proposed and Potential Irrigation Development in the Nam Mae Suai Basin
IV-5	Existing, Proposed and Potential Irrigation Development in the Nam Mae Lao Basin
IV-6	Existing, Proposed and Potential Irrigation Development in the Lower Part of Mae Nam Ing
IV-7	Existing, Proposed and Potential Irrigation Development in the Mae Lao Basin
IV-8	Existing, Proposed and Potential Irrigation Development in the Middle Part of Mae Nam Ing
IV-9	Existing, Proposed and Potential Irrigation Development in the Mae Nam Phung and Upper Part of Mae Nam Ing
IV-10	Schematic Diagram of the Upper Nan Basin
IV-11	Existing, Proposed and Potential Irrigation Development in the Nam Yao Basin
IV-12	Existing, Proposed and Potential Irrigation Development in the Upper Part of Mae Nam Nan
IV-13	Existing, Proposed and Potential Irrigation Development in the Second Part of Mae Nam Nan
IV-14	Existing, Proposed and Potential Irrigation Development in the Nam Yao (2) Basin
IV-15	Existing, Proposed and Potential Irrigation Development in the Nam Samun and Nam Sa
IV-16	Existing, Proposed and Potential Irrigation Development in the Nam Wa Basin
IV-17	Existing, Proposed and Potential Irrigation Development in the Nam Hacng Basin
IV-18	Existing, Proposed and Potential Irrigation Development in the Third Part of Mae Nam Nan



THE STUDY ON THE KOK-ING-NAN WATER DIVERSION PROJECT	
SCHEMATIC DIAGRAM OF KOK AND ING BASIN	Map & Drawing No.
JAPAN INTERNATIONAL COOPERATION AGENCY (JICA)	IV-1
SANYU CONSULTANTS INC. & NIPPON KOEI CO., LTD.	

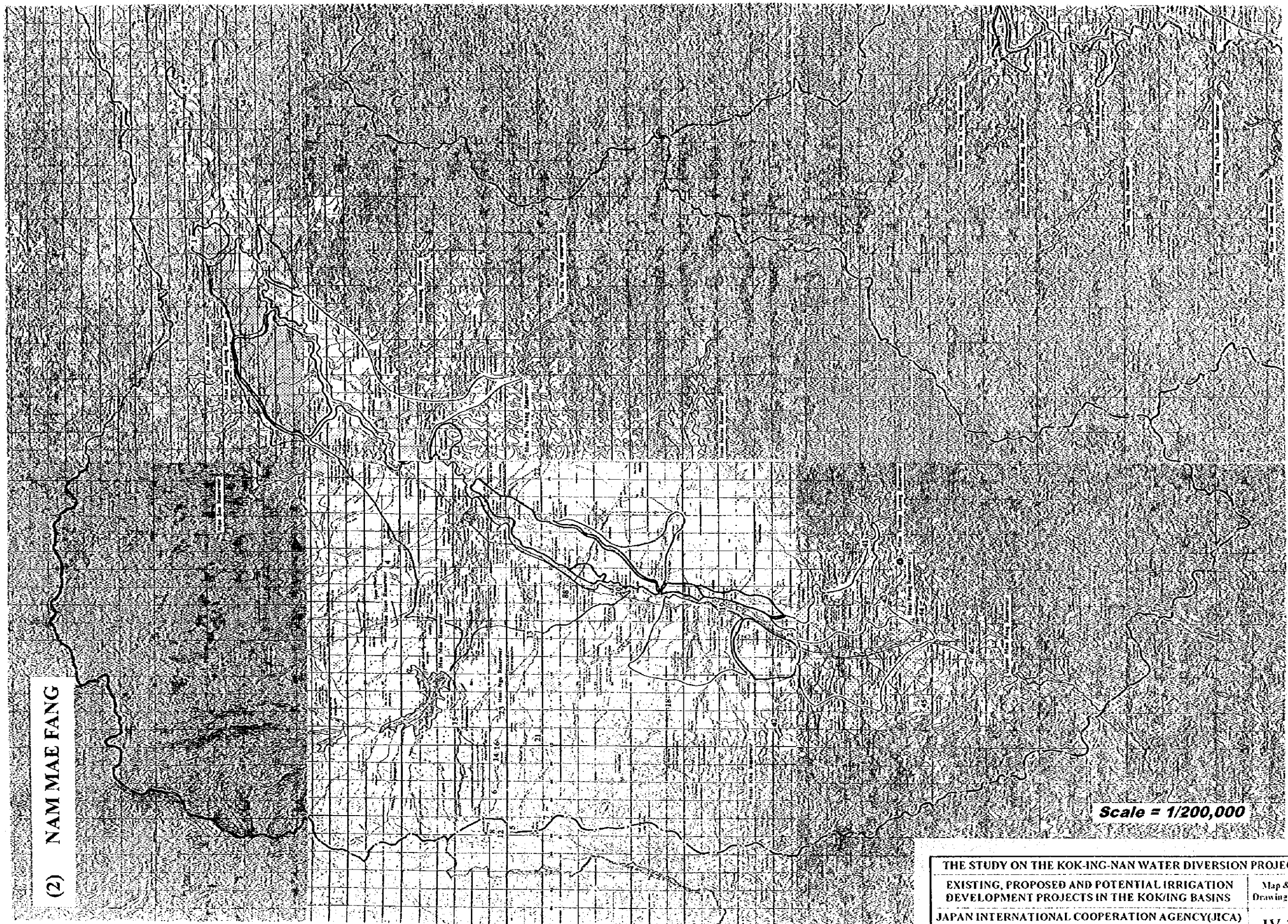
(1) LOWER PART OF NAM MAE KOK



Scale = 1/250,000

THE STUDY ON THE KOK-ING-NAN WATER DIVERSION PROJECT	
EXISTING, PROPOSED AND POTENTIAL IRRIGATION DEVELOPMENT PROJECTS IN THE KOK/ING BASINS	Map & Drawing No.
JAPAN INTERNATIONAL COOPERATION AGENCY (JICA)	IV-2
SANYU CONSULTANTS INC. & NIPPON KOEI CO., LTD.	

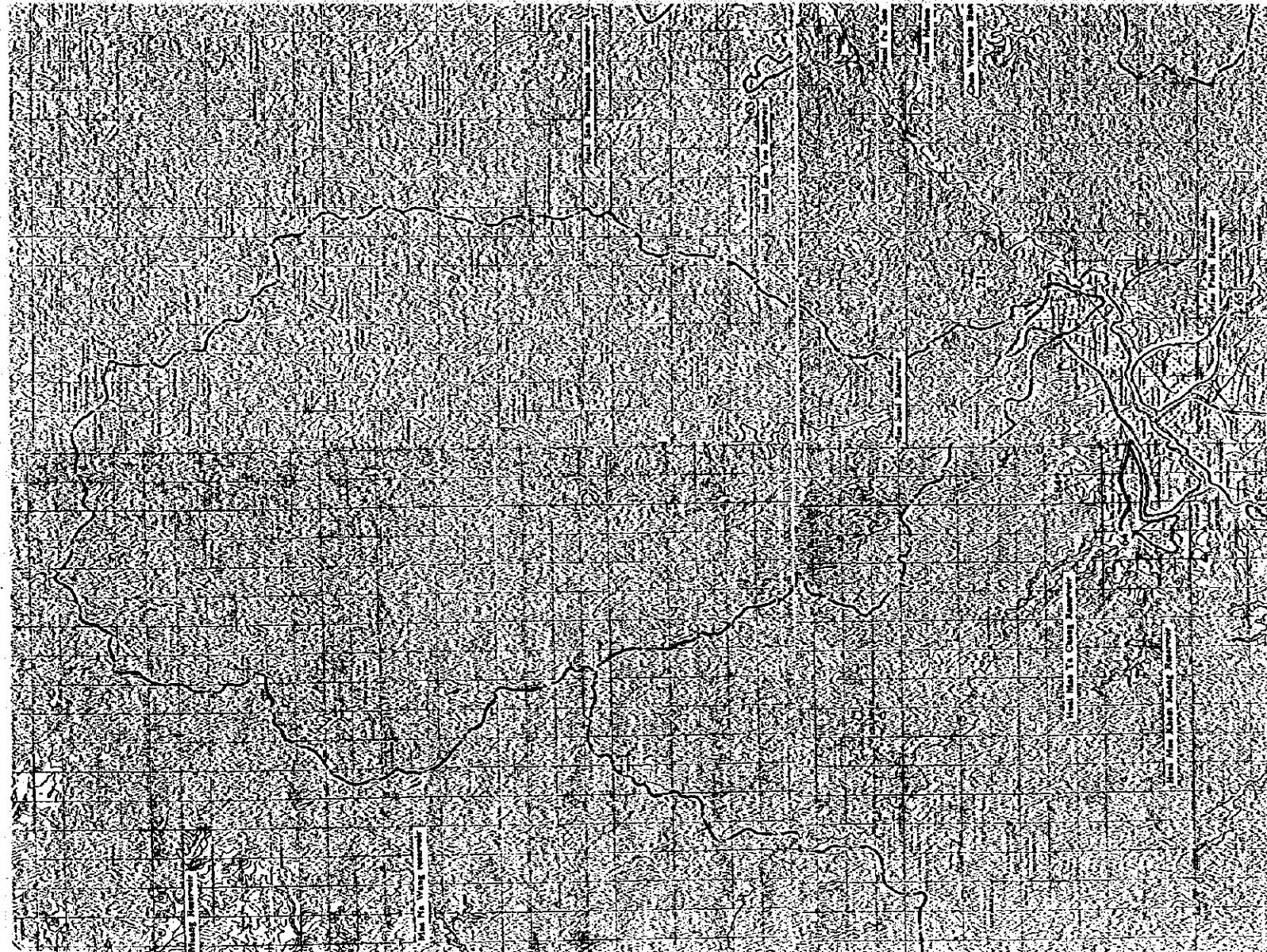
(2) NAM MAE FANG



Scale = 1/200,000

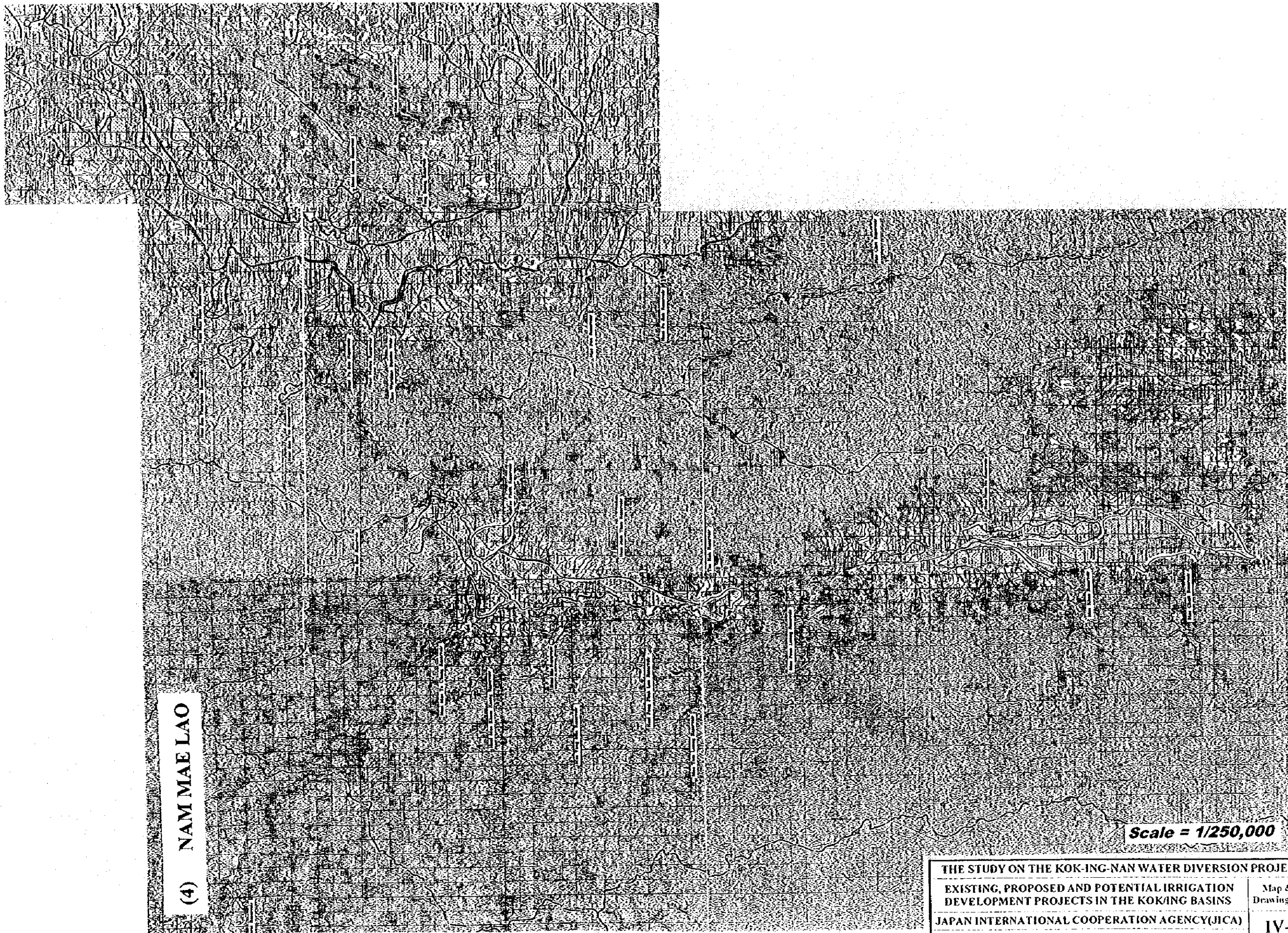
THE STUDY ON THE KOK-ING-NAN WATER DIVERSION PROJECT	
EXISTING, PROPOSED AND POTENTIAL IRRIGATION DEVELOPMENT PROJECTS IN THE KOK/ING BASINS	Map & Drawing No.
JAPAN INTERNATIONAL COOPERATION AGENCY (JICA)	IV-3
SANYU CONSULTANTS INC. & NIPPON KOEI CO., LTD.	

(3) NAM MAE SUAI



Scale = 1/200,000

THE STUDY ON THE KOK-ING-NAN WATER DIVERSION PROJECT	
EXISTING, PROPOSED AND POTENTIAL IRRIGATION DEVELOPMENT PROJECTS IN THE KOK/ING BASINS	Map & Drawing No.
JAPAN INTERNATIONAL COOPERATION AGENCY(JICA) SANYU CONSULTANTS INC. & NIPPON KOEI CO., LTD.	IV-4



(4) NAM MAE LAO

Scale = 1/250,000

THE STUDY ON THE KOK-ING-NAN WATER DIVERSION PROJECT	
EXISTING, PROPOSED AND POTENTIAL IRRIGATION DEVELOPMENT PROJECTS IN THE KOK/ING BASINS	Map & Drawing No.
JAPAN INTERNATIONAL COOPERATION AGENCY (JICA)	IV-5
SANYU CONSULTANTS INC. & NIPPON KOEI CO., LTD.	