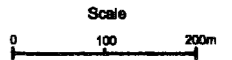
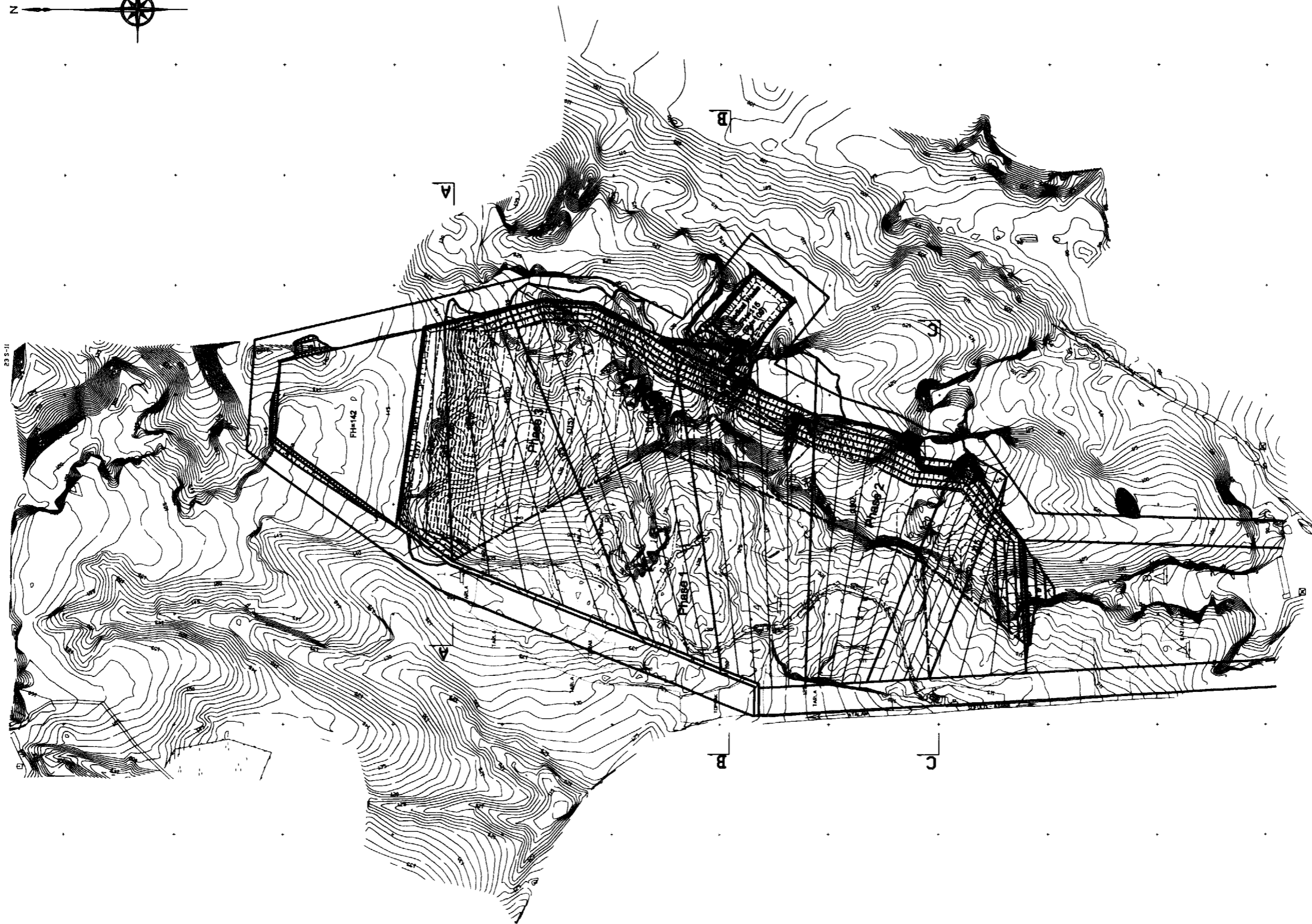
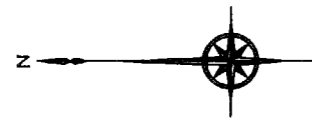


4 104 200  
4 104 000  
4 103 800  
4 103 600  
4 103 400  
4 103 200  
4 103 000  
4 102 800  
4 102 600  
4 102 400  
4 102 200

447 400  
447 200  
447 000  
446 800  
446 600  
446 400  
446 200  
446 000  
445 800

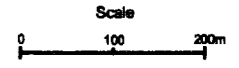
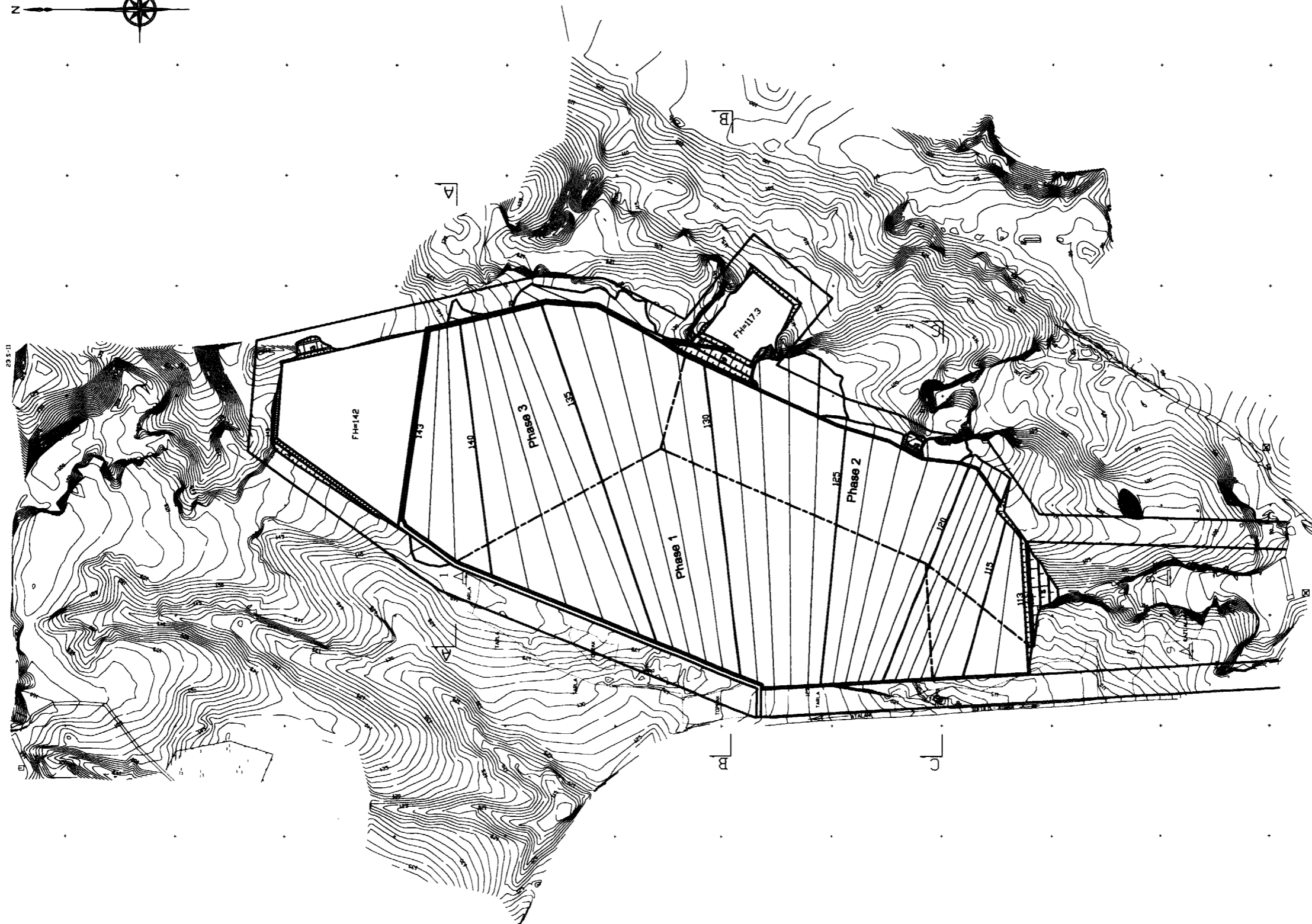
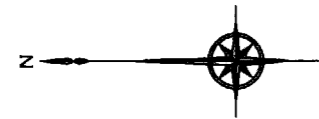
Title		<b>Overall Site Development Plan (with contour)</b>	
Drawing No.		The Study on Regional Solid Waste Management for Adana-Mersin in the Republic of Turkey	
<b>S4</b>		Japan International Cooperation Agency (JICA)	



4 104 200      4 104 000      4 103 800      4 103 600      4 103 400      4 103 200      4 103 000      4 102 800      4 102 600      4 102 400      4 102 200

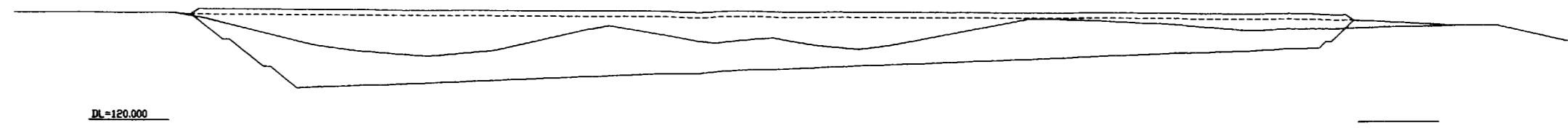
447 400  
447 200  
447 000  
446 800  
446 600  
446 400  
446 200  
446 000  
445 800

Title		<b>Completion of Landfill Operation (before Final Cover)</b>	
Drawing No.		The Study on Regional Solid Waste Management for Adana-Mersin in the Republic of Turkey	
<b>S5</b>		Japan International Cooperation Agency (JICA)	

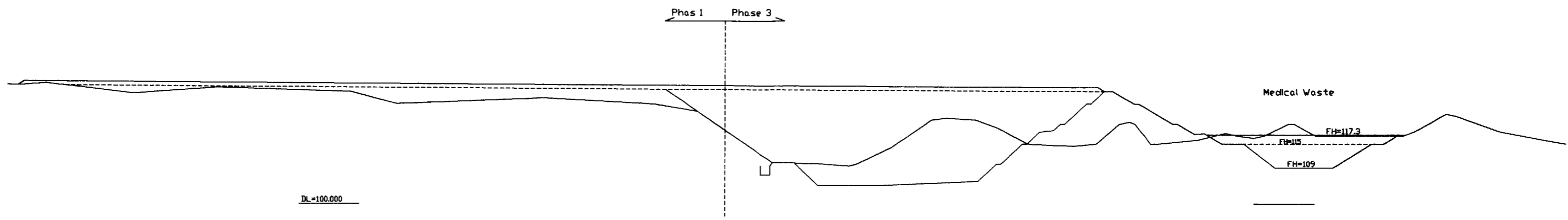


Title	
Completion of Landfill (after Final Cover)	
Drawing No.	The Study on Regional Solid Waste Management for Adana-Mersin in the Republic of Turkey Japan International Cooperation Agency (JICA)
S6	

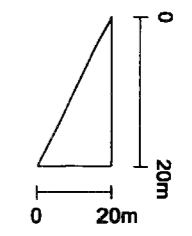
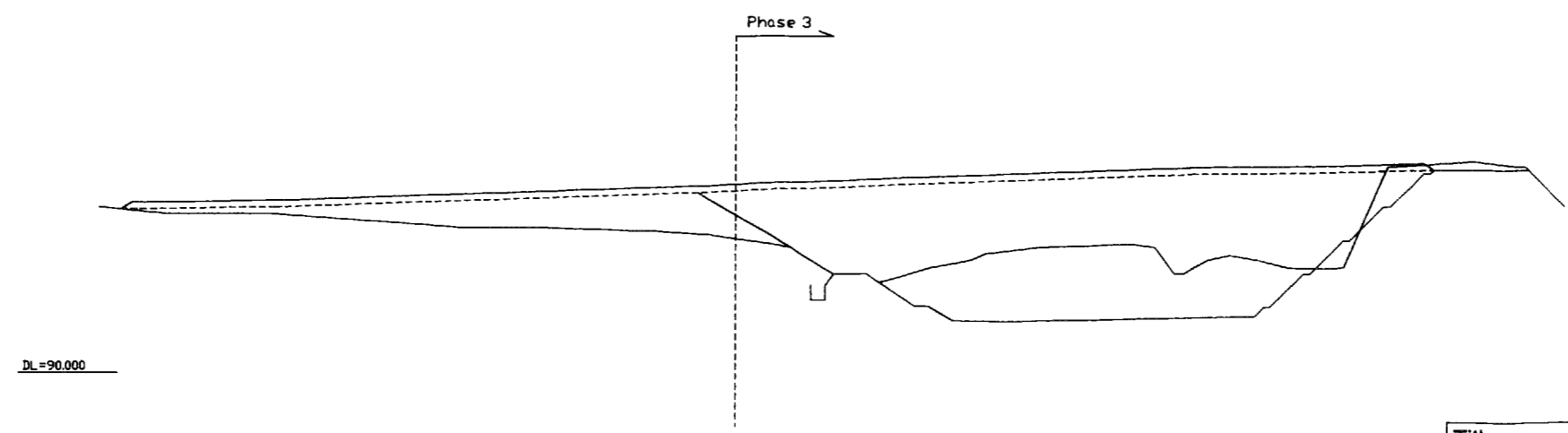
A - A



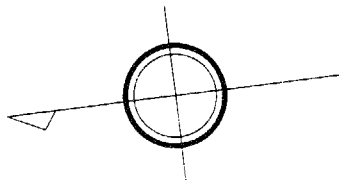
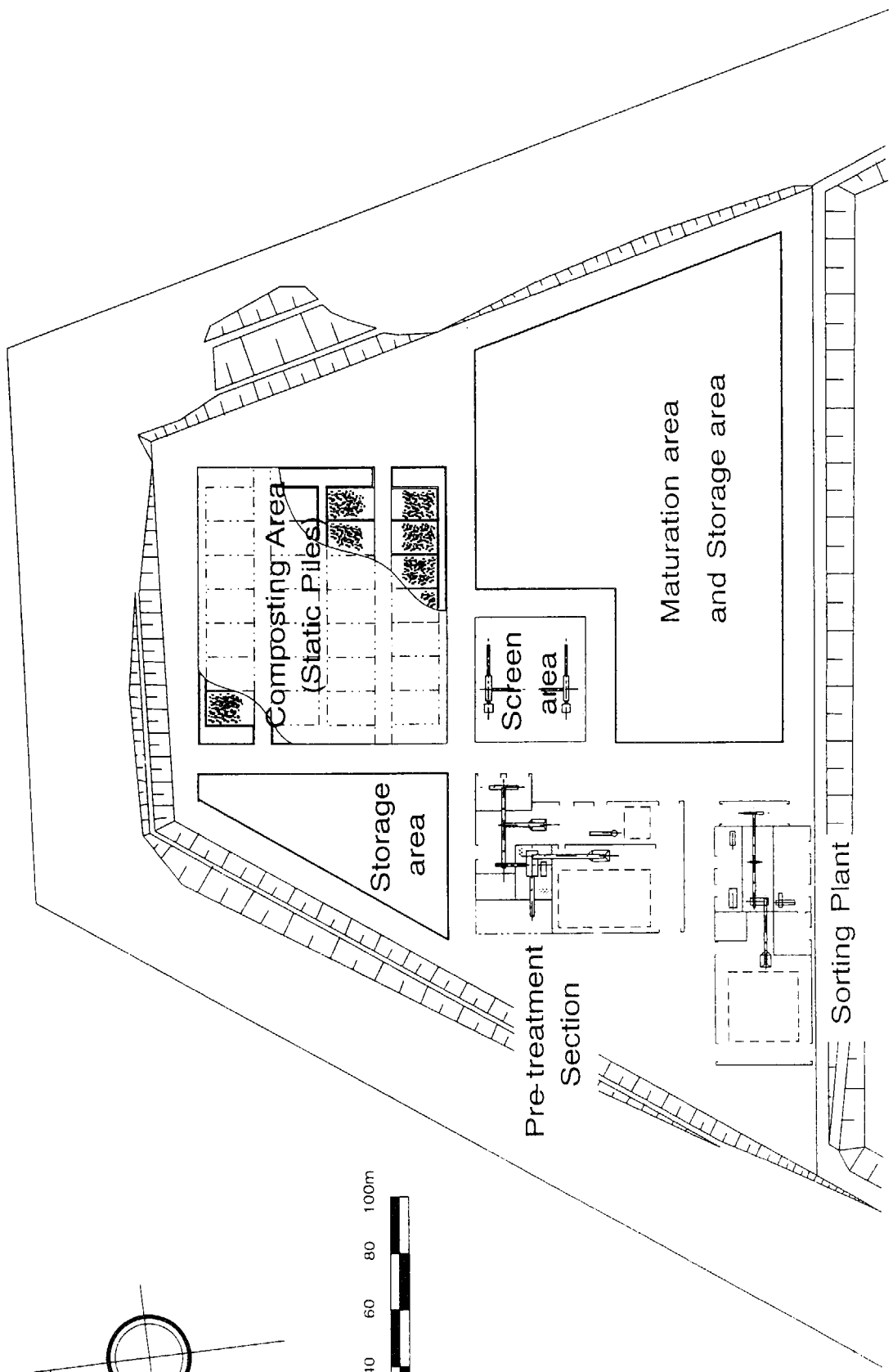
B - B



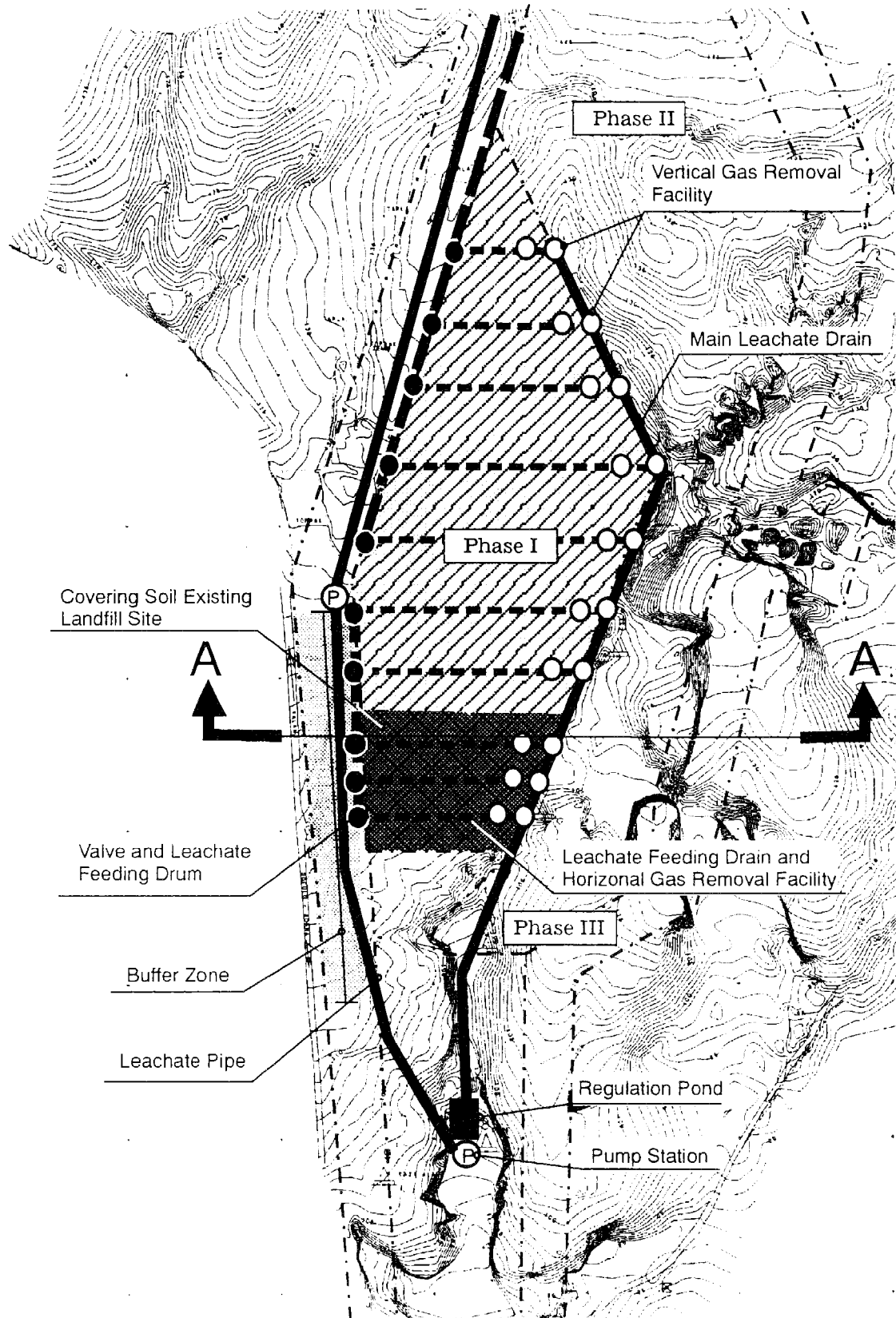
C - C



Title	
Landfill Site Cross Section	
Drawing No.	The Study on Regional Solid Waste Management for Adana-Mersin in the Republic of Turkey
S7	Japan International Cooperation Agency (JICA)



Title	
<b>Plan of Sorting and Compost Plants</b>	
Drawing No.	The Study on Regional Solid Waste Management for Adana-Mersin in the Republic of Turkey
<b>S8</b>	Japan International Cooperation Agency (JICA)



Title

# Plan of Leachate Circulation Facility

Drawing No

S9

The Study on Regional Solid Waste Management  
for Adana-Mersin in the Republic of Turkey

Japan International Cooperation Agency (JICA)