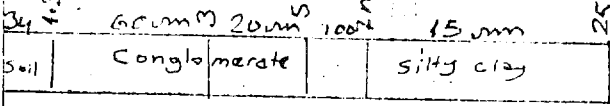


JF-8

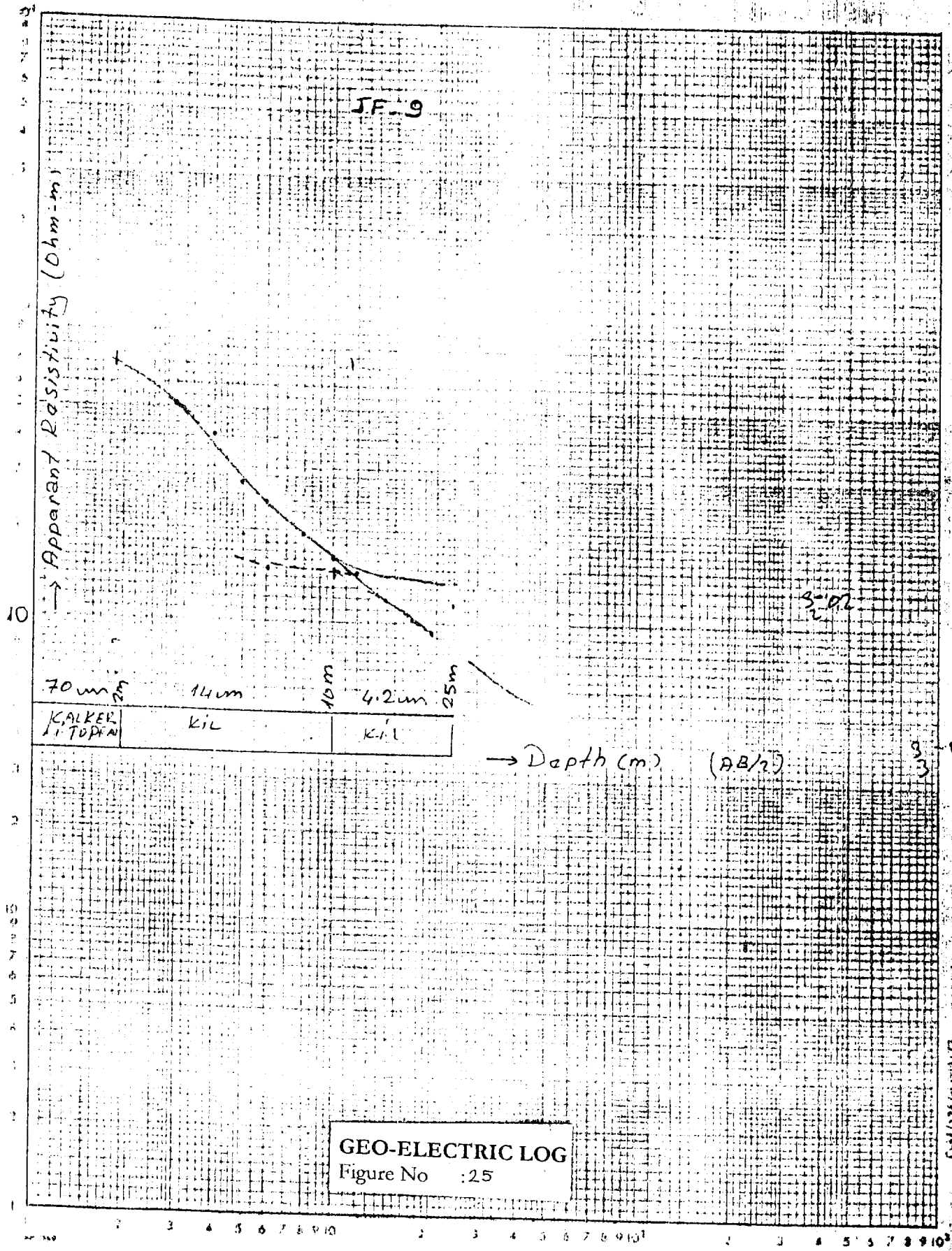
Apparent Resistivity (ohm-m)



Depth (m) (A.B/2)

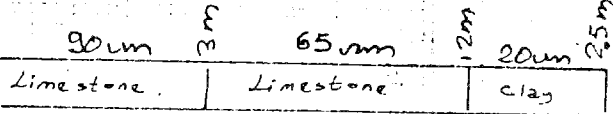
GEO-ELECTRIC LOG

Figure No : 24



JF 10

→ Apparent Resistivity ($\Omega\text{m}\cdot\text{m}$)



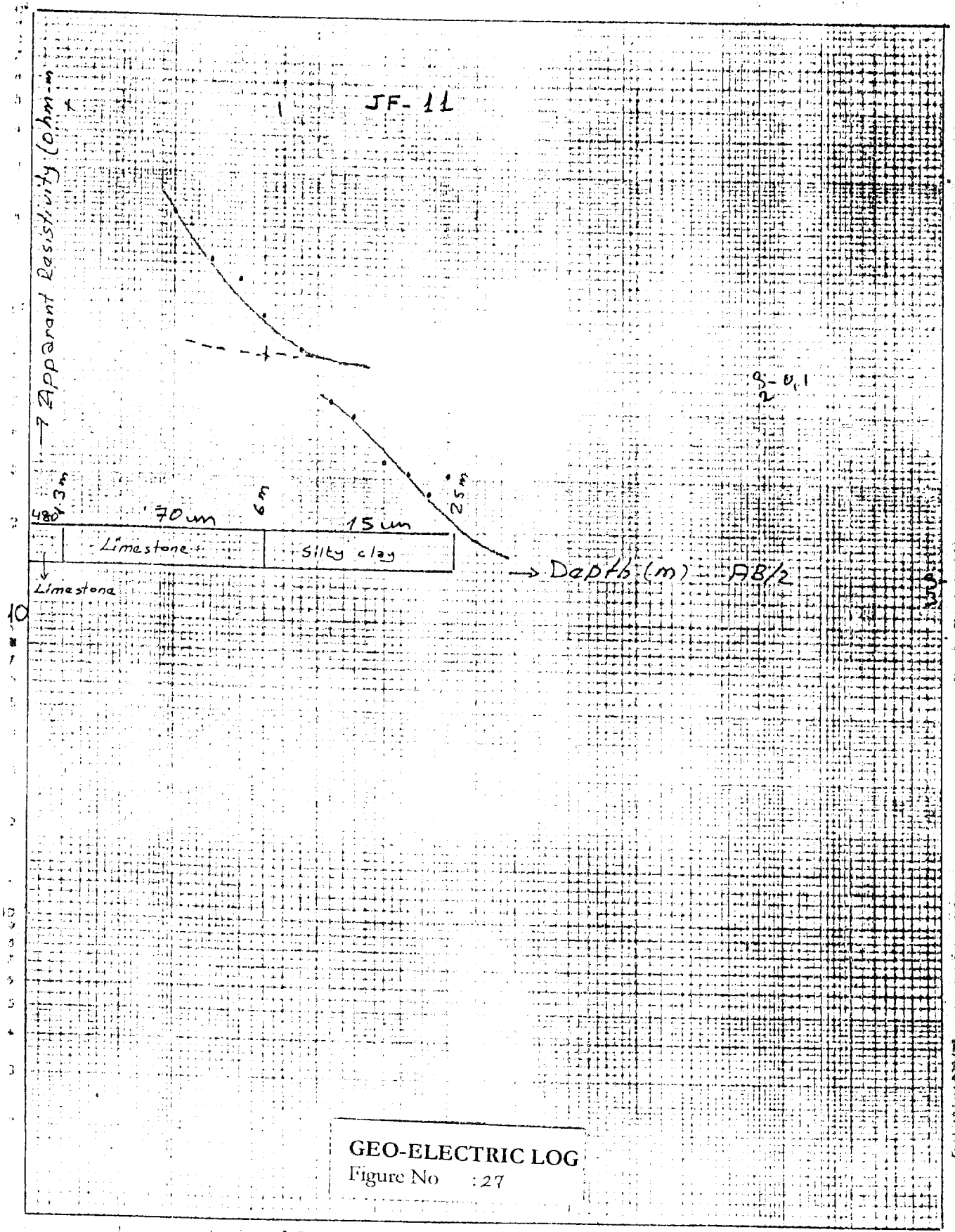
→ Depth (m) AB/2

3-95

0.3-0.3

GEO-ELECTRIC LOG
Figure No : 26

0.3-0.3



GEO-ELECTRIC LOG
 Figure No : 27

G-4/124 and D52/72

JF-12

→ Apparent Resistivity ($\Omega\text{-m}$)

2-013

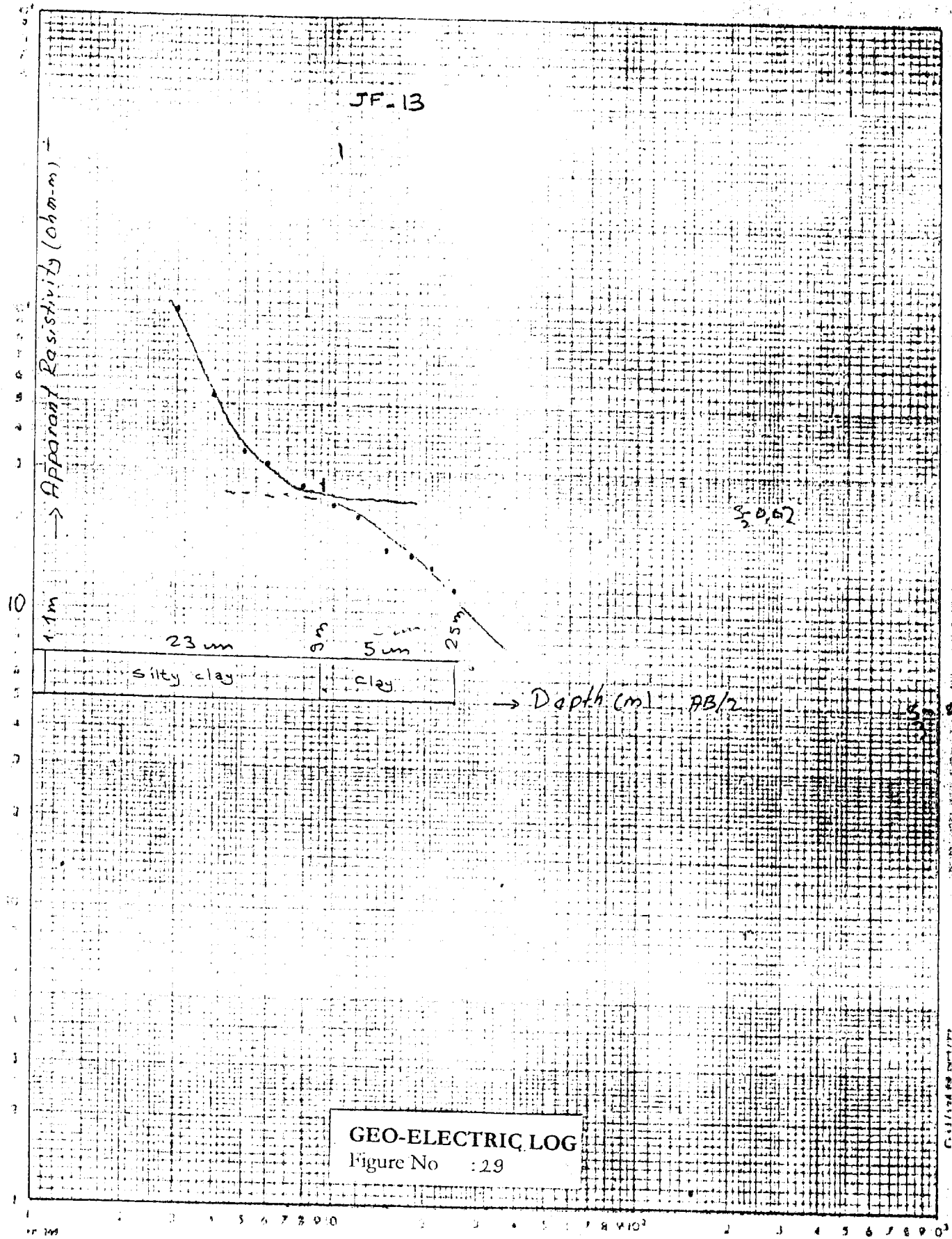
120 $\Omega\text{-m}$	3 m	36 $\Omega\text{-m}$	9 m	7.5 $\Omega\text{-m}$	25 m
Limestone		silty clay		clay.	

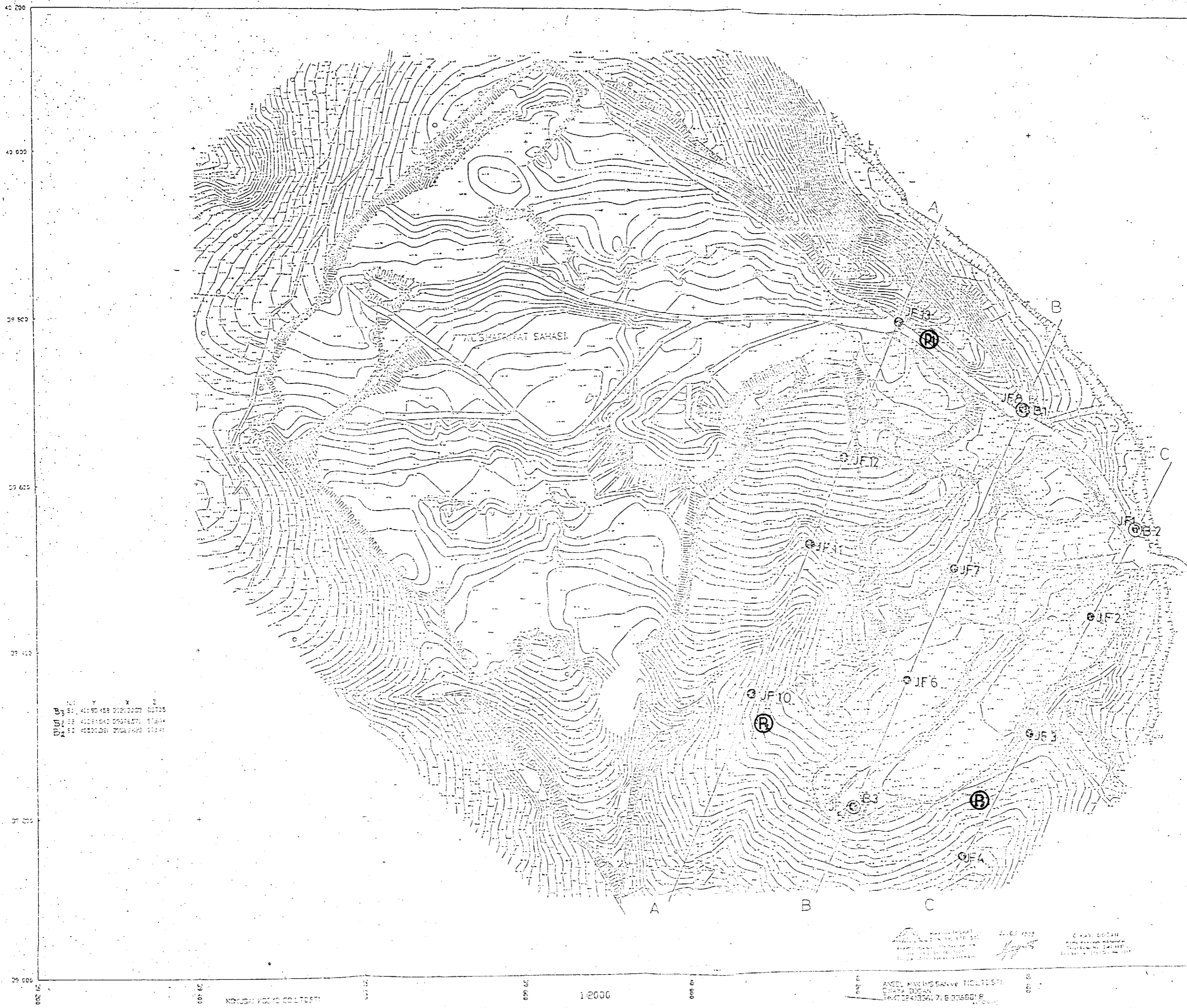
→ Depth (m) (AB/2)

33

02

GEO-ELECTRIC LOG
Figure No : 28





Y X Z
 01 41 95 458 000 000 000
 02 41 95 458 000 000 000
 03 41 95 458 000 000 000

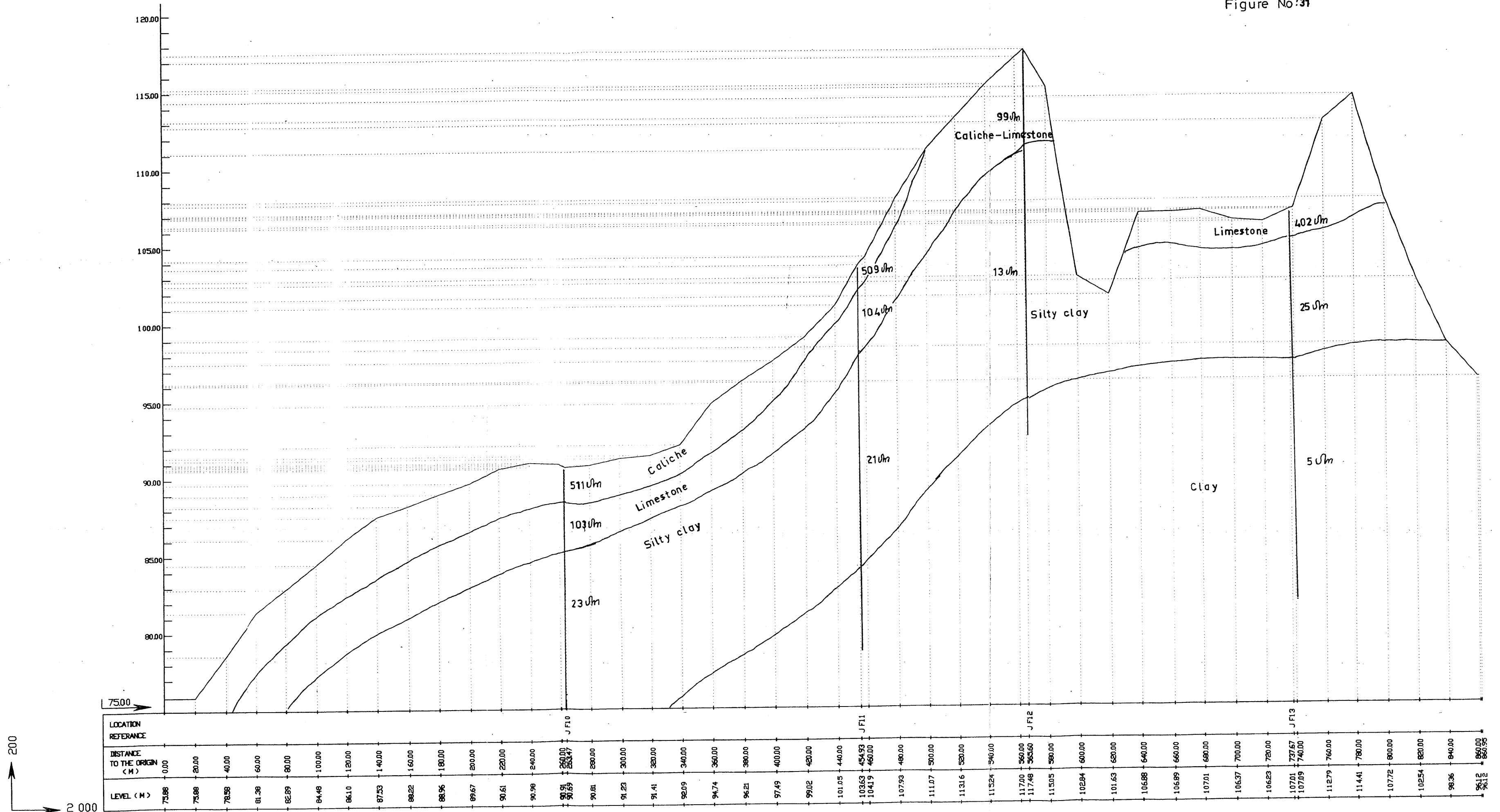
- LEGEND**
- B2 Borehole location
 - JF6 Geo-Electric location
 - Ⓟ FILL MATERIAL SAMPLE LOCATION

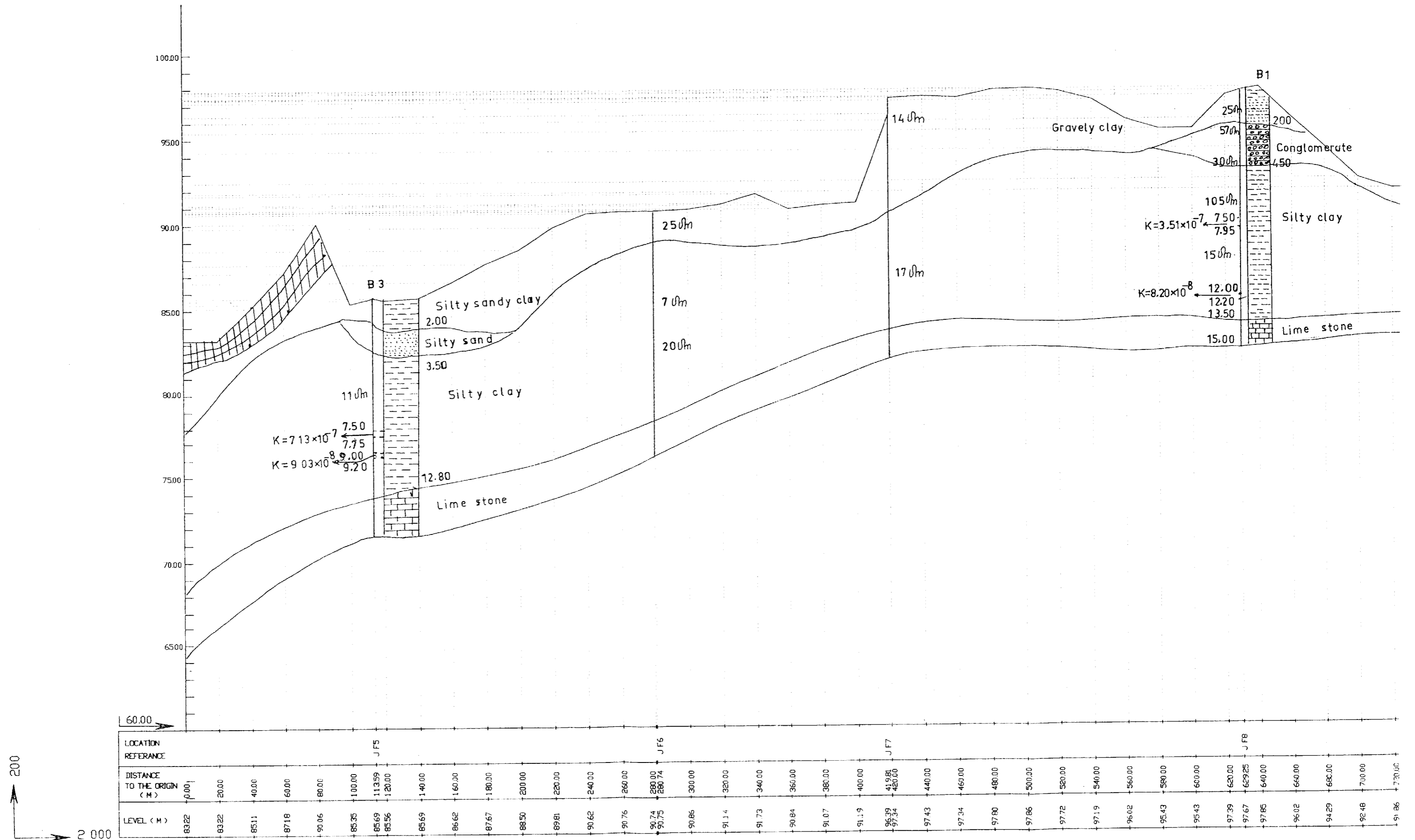
Figure :30

ANGEL MAKING SALLE TIGLIT 1571
 CHAYA DUDAN
 TEL: 021 3361 71 8 336801 8

AA

LONGITUDINAL PROFILE A-A
Figure No:31





CC

LONGITUDINAL PROFILE C-C
Figure No:33

