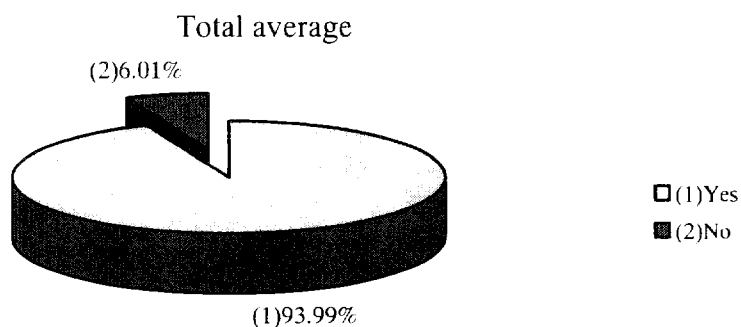
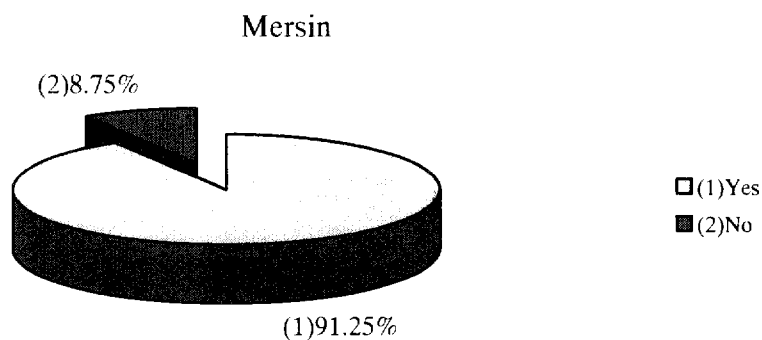
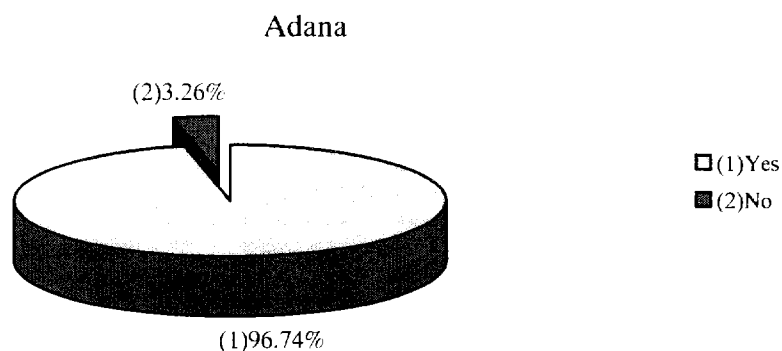


Data 2

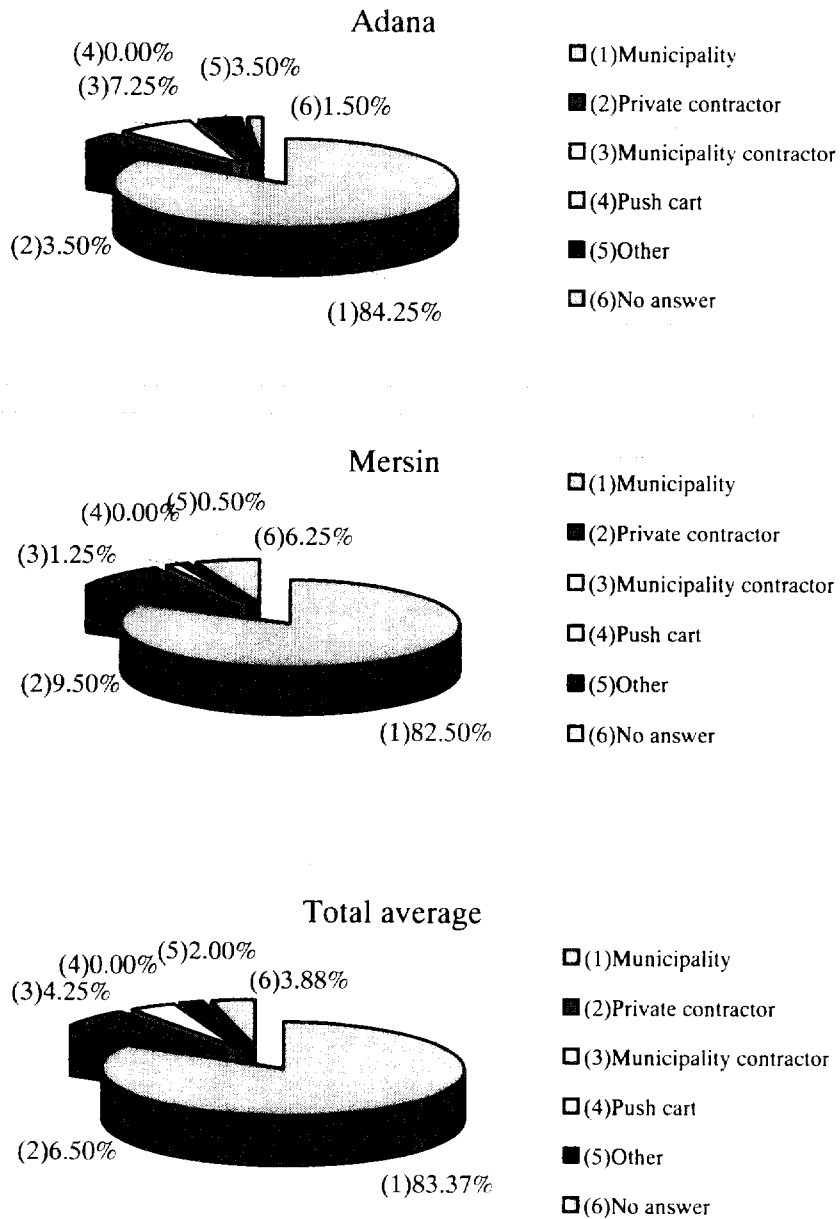
Public Opinion Survey (POS)

Q.1.1 Do you have refuse collection services?



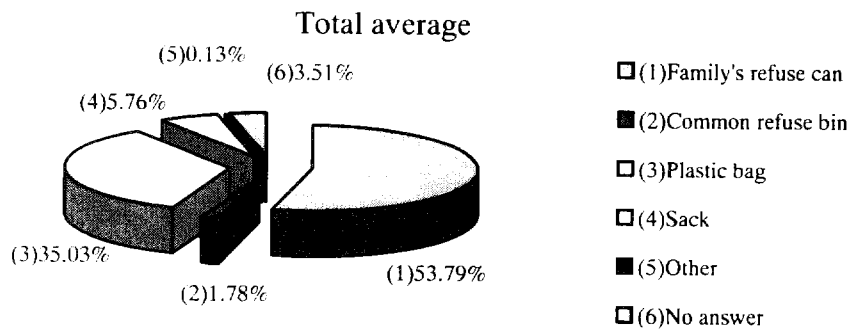
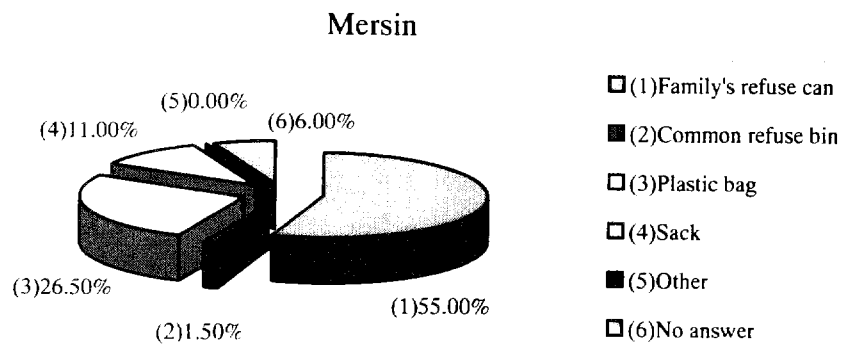
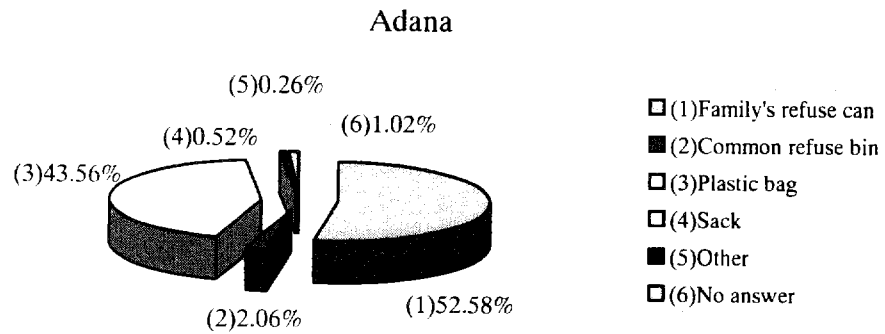
According to the cleansing section, every district municipality offers collection services to all residents. Nonetheless, 6.01% (3.26% in Adana, 8.75% in Mersin) of the total number of residents replied they do not receive the services. Although almost all of the study area is covered by some type of collection service, it is surmised that in some areas the service is not efficiently carried out.

Q.1.2 Refuse is collected by?



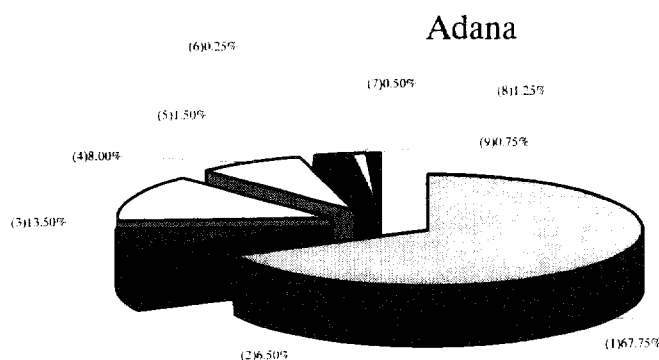
The majority of the residents in Adana and Mersin, 84.25% and 82.50% respectively, said they receive municipal collection services.

Q.1.3 Refuse is stored for collection in?

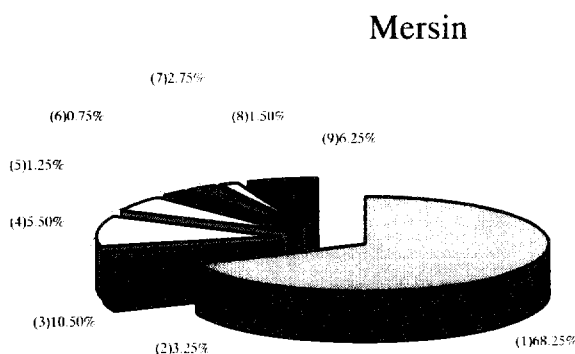


The residents in the target areas were found to use different kinds of containers for waste storage. While 53.79% use family's refuse cans, 35.03% use plastic bags and less than 2% use common refuse bins.

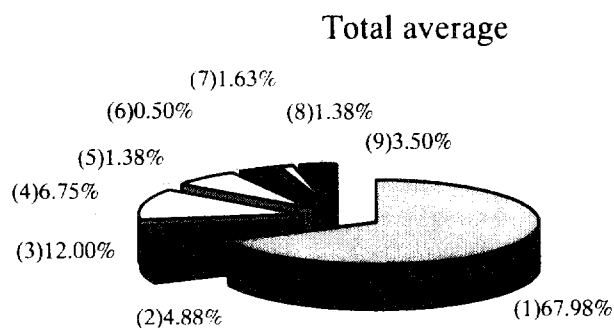
Q.1.4 Frequency of refuse collection



- (1) Everyday
- (2) 5 to 6 days a week
- (3) 3 to 4 days a week
- (4) Twice a week
- (5) Once a week
- (6) Once in two weeks
- (7) No fixed schedule
- (8) Other
- (9) No answer



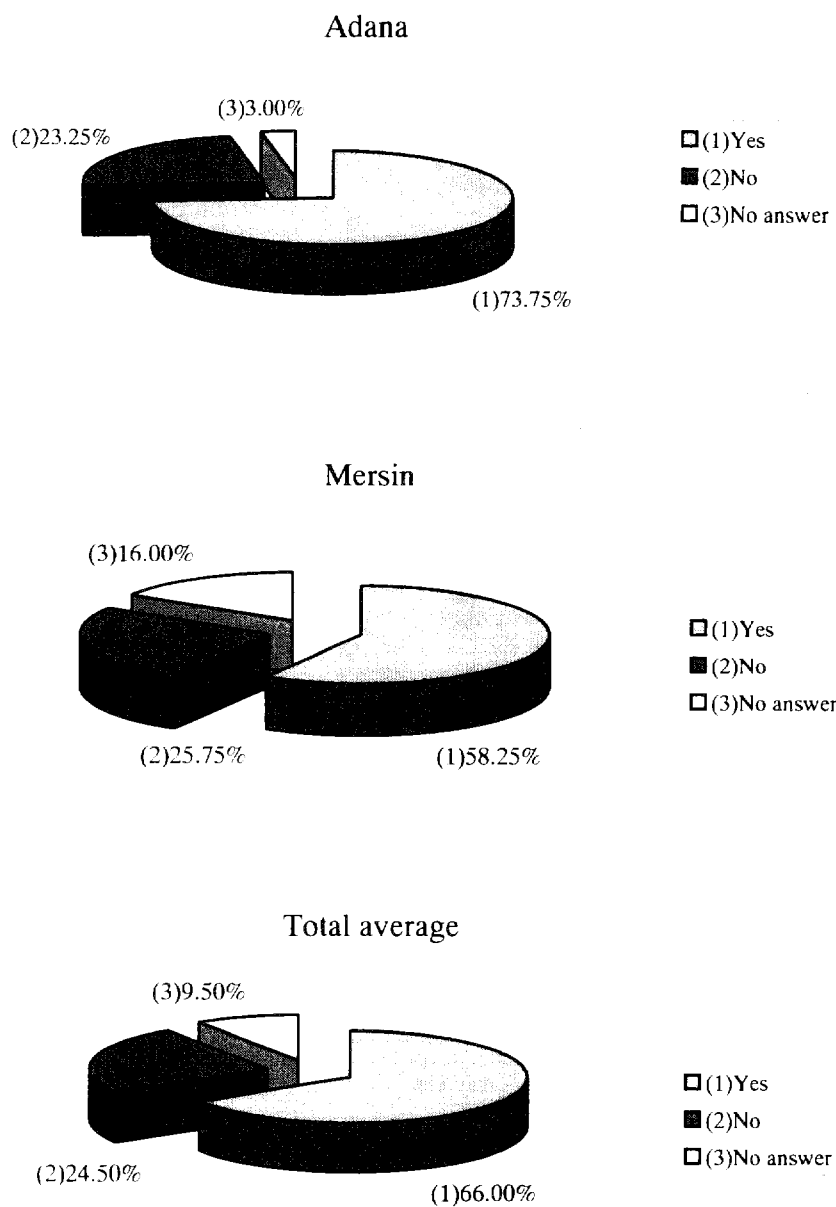
- (1) Everyday
- (2) 5 to 6 days a week
- (3) 3 to 4 days a week
- (4) Twice a week
- (5) Once a week
- (6) Once in two weeks
- (7) No fixed schedule
- (8) Other
- (9) No answer



- (1) Everyday
- (2) 5 to 6 days a week
- (3) 3 to 4 days a week
- (4) Twice a week
- (5) Once a week
- (6) Once in two weeks
- (7) No fixed schedule
- (8) Other
- (9) No answer

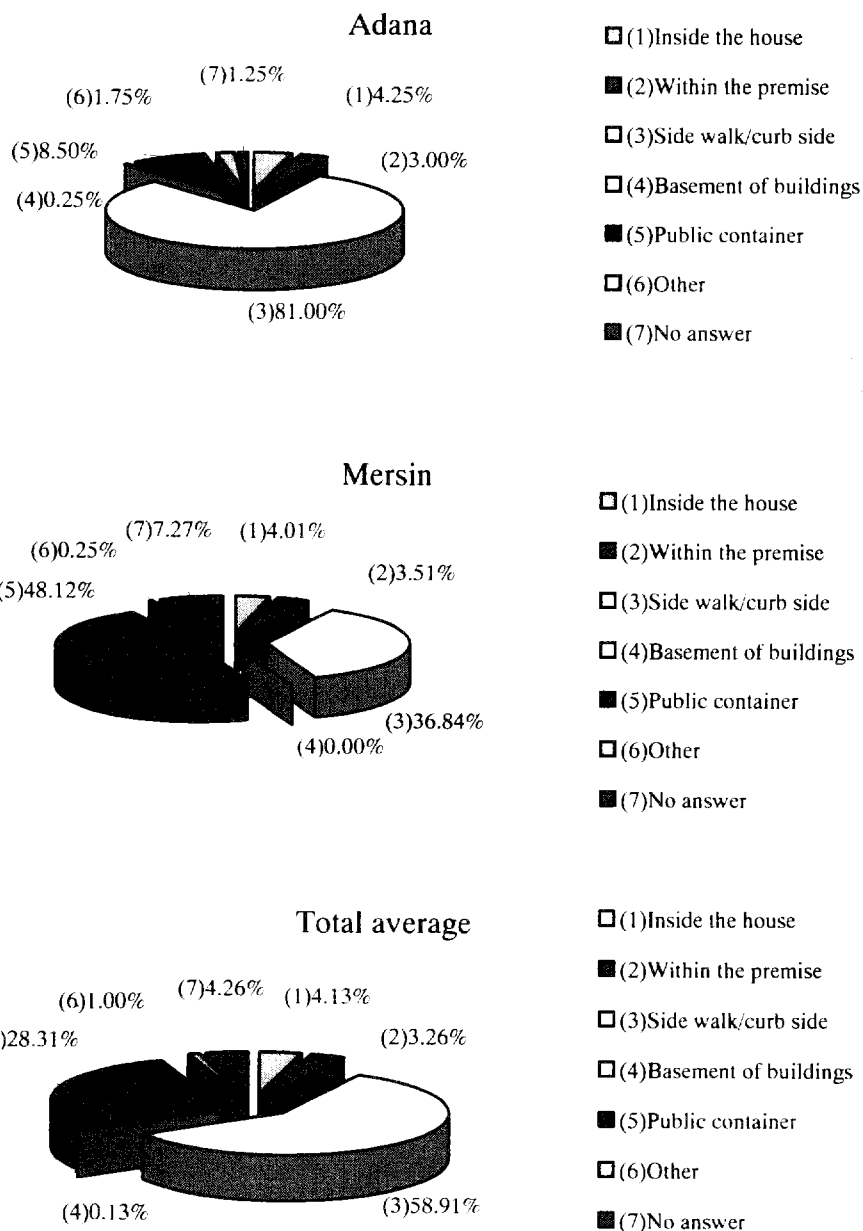
Approximately 70% of the residents in Adana and Mersin said they receive daily collection services, while 16.88% say they receive the service 3 to 6 times a week. The number of residents receiving collection services more than thrice a week is considerably high at approximately 85%.

Q.1.5 Is your refuse collected at a fixed day and time?



The percentage of residents receiving fixed collection services is higher in Adana than in Mersin: 73.75% and 58.25%, respectively.

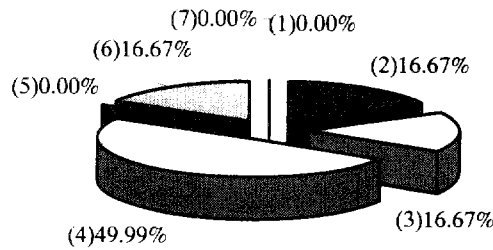
Q.1.6 Refuse is collected at?



In Adana, 81.00% of the residents discharge their waste on side walks or curbs; only 8.50% use public containers. It can be said, therefore, that curb-side collection is the collection system mainly adopted in Adana. On the one hand, public container collection is more widespread in Mersin, where approximately half of the residents (48.12%) said they use public containers.

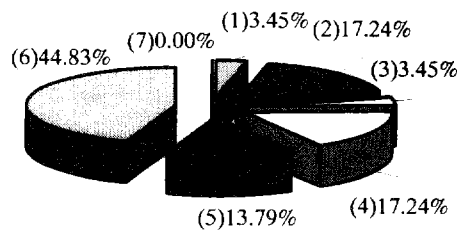
Q.1.7 If no to Q.1.1, how do you dispose refuse?

Adana



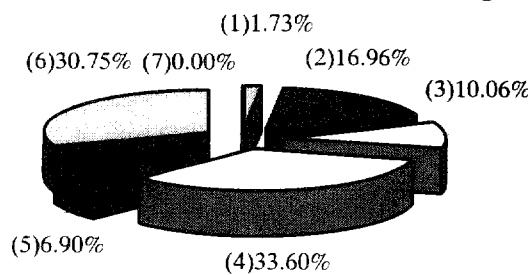
- (1) Burned in the premise
- (2) Burned in vacant lot
- (3) Buried in the premise
- (4) Dumped in the vacant lot
- (5) Dumped in river
- (6) Other
- (7) No answer

Mersin



- (1) Burned in the premise
- (2) Burned in vacant lot
- (3) Buried in the premise
- (4) Dumped in the vacant lot
- (5) Dumped in river
- (6) Other
- (7) No answer

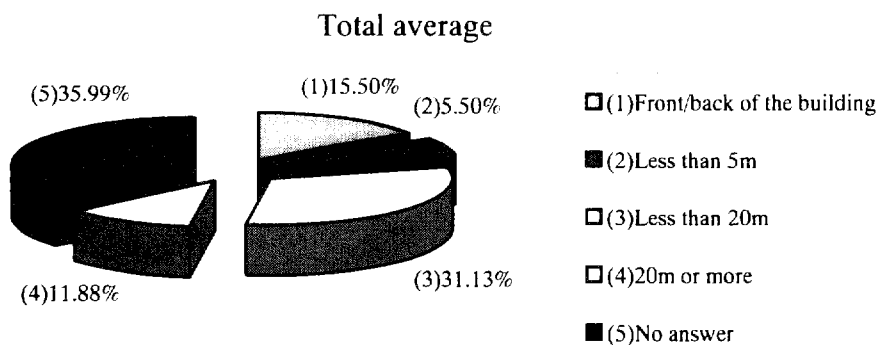
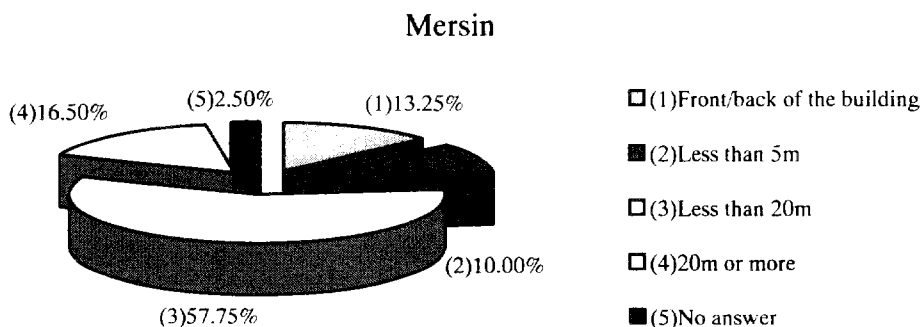
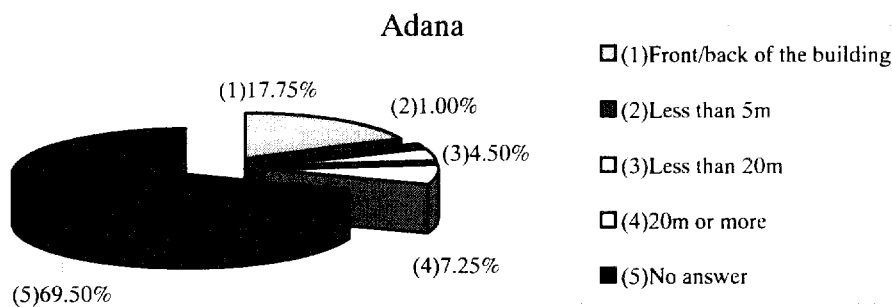
Total average



- (1) Burned in the premise
- (2) Burned in vacant lot
- (3) Buried in the premise
- (4) Dumped in the vacant lot
- (5) Dumped in river
- (6) Other
- (7) No answer

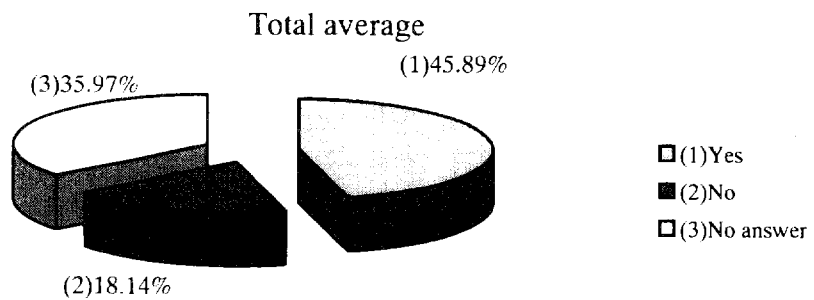
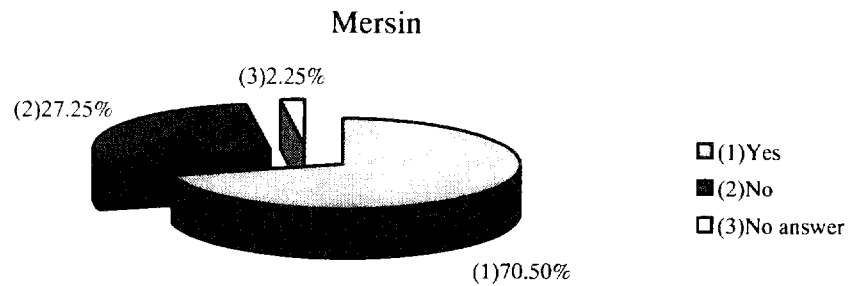
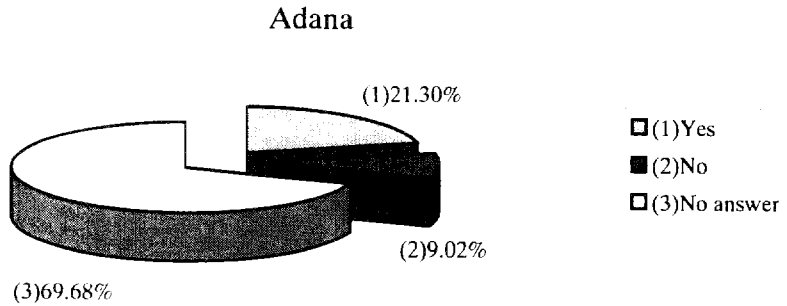
Only less than 10% of the residents in both greater municipalities said they do not receive the collection services mentioned in *Q.1.1*. But they carry out inadequate self-disposal practices such as illegal dumping in vacant lots or rivers (49.99% in Adana, 31.03% in Mersin), or burning in the premises or vacant lots (16.67% in Adana, 20.69% in Mersin).

Q.1.8 If public container is used, how far is it from your house?



As previously mentioned in *Q.1.6*, the residents of Adana hardly use public containers. Therefore, 69.50% of these residents did not respond to the question. 23.25% of the residents who responded said that public containers are installed within 20m from their houses. In Mersin, where public containers are widely used, over 80% of the residents replied that the containers are installed within 20m from their houses, indicating that the public container collection system is functioning well.

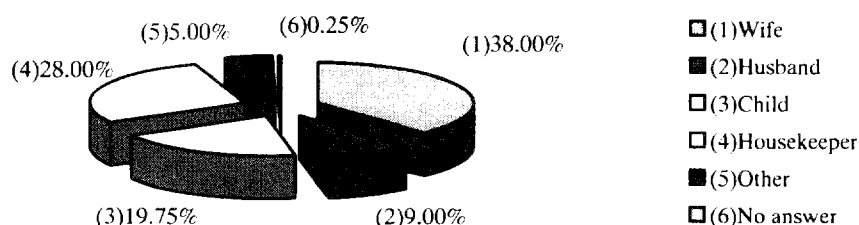
Q.1.9 If public container is used, are you satisfied with this type of collection service?



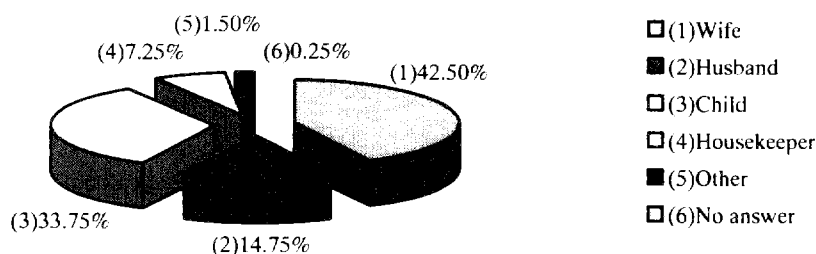
As previously mentioned in *Q.1.6*, the residents of Adana hardly use public containers. Therefore, 69.68% of the respondents did not answer the question. The majority of those who did indicated satisfaction with the container collection system. In Mersin, where public containers are widely used, 70.50% of the residents expressed satisfaction with the container collection system. This could mean that the container collection services are efficiently carried out.

Q.1.10 Refuse is taken to collection point by?

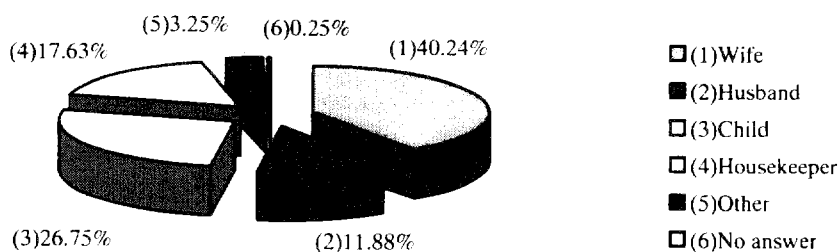
Adana



Mersin

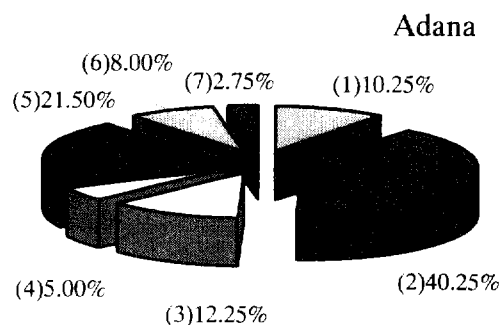


Total average

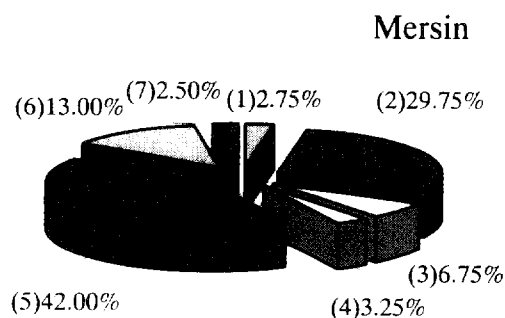


Wastes at most households in Adana and Mersin are disposed of by the wife/mother or the children. To improve waste collection services, guidance should be extended to the wives/mothers regarding adequate disposal methods and on sanitary issues.

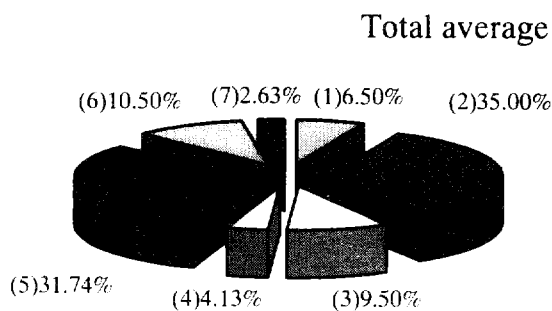
Q.1.11 How do you discharge bulky waste (furniture, electrical appliances, etc.)



- (1) Collected by regular collection
- (2) Collected by push cart
- (3) Dumped near by
- (4) Collected by special collection
- (5) I do not discharge
- (6) Other
- (7) No answer



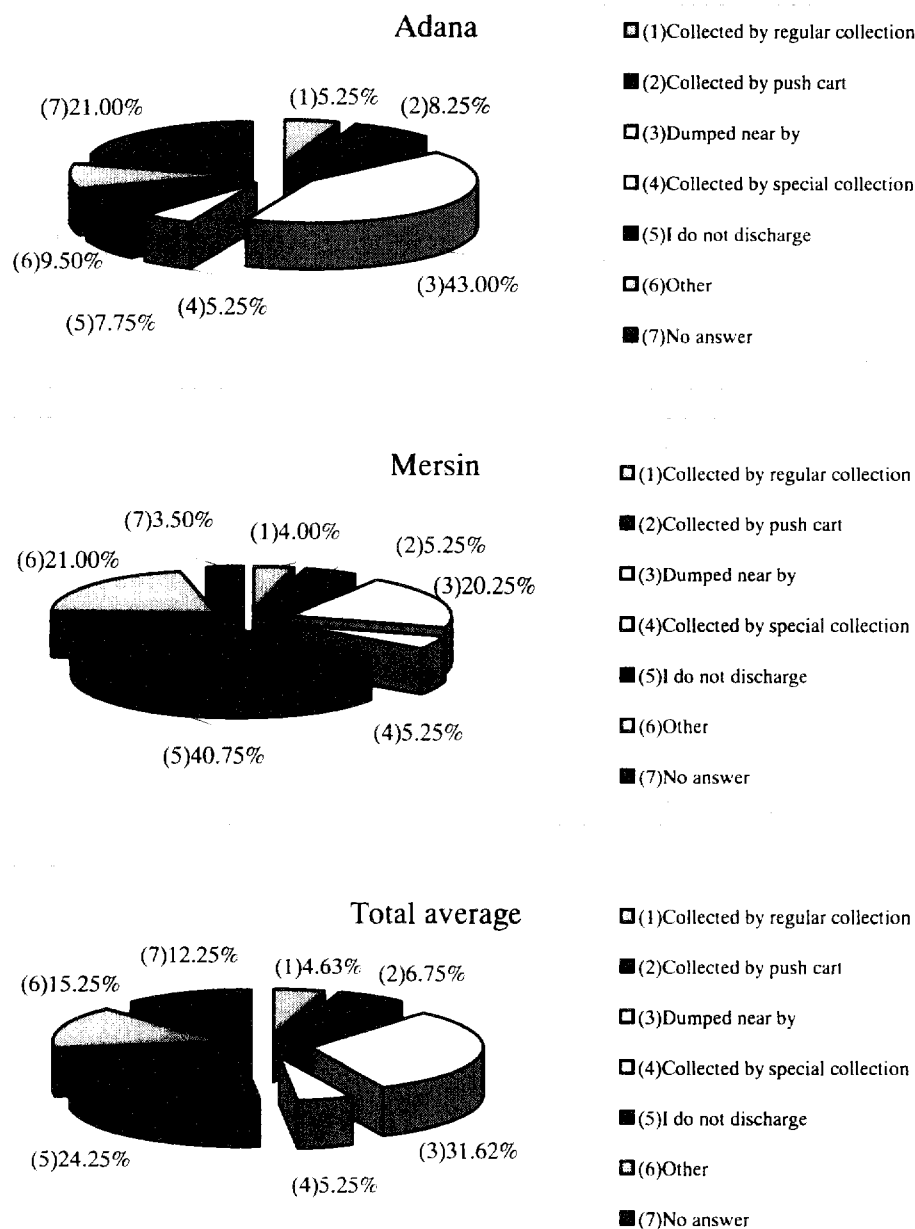
- (1) Collected by regular collection
- (2) Collected by push cart
- (3) Dumped near by
- (4) Collected by special collection
- (5) I do not discharge
- (6) Other
- (7) No answer



- (1) Collected by regular collection
- (2) Collected by push cart
- (3) Dumped near by
- (4) Collected by special collection
- (5) I do not discharge
- (6) Other
- (7) No answer

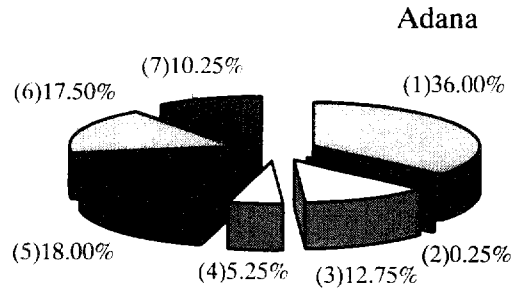
In Mersin, almost half of the residents (42.00%) said they do not discharge bulky wastes. Both residents (40.25% in Adana, 29.75% in Mersin) mainly use push carts for the discharge of bulky wastes. These push carts play a major role in the recycling of bulky wastes.

Q.1.12 How do you discharge (or know how to discharge) demolition debris?

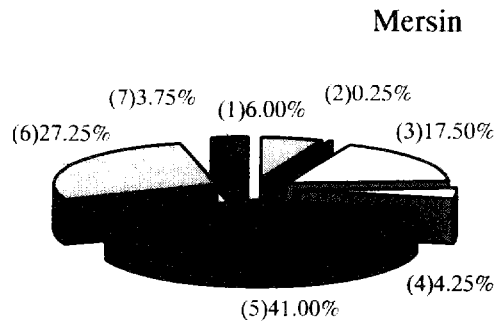


In Mersin, 40.75% of the residents said they do not discharge construction debris. 31.62% of the total average number of residents in both areas (43.00% in Adana, 20.25% in Mersin) replied that they mainly dump debris in the neighbourhood. In particular, almost half of the residents in Adana illegally dump their wastes, making the provision of services for the collection of construction debris a major issue.

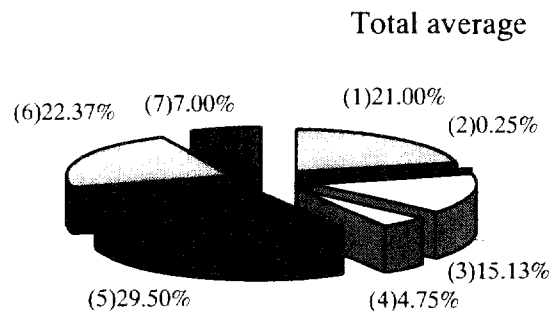
Q.1.13 How do you discharge garden waste (fallen leaves, branches, grass, etc.)?



- (1) Collected by regular collection
- (2) Collected by push cart
- (3) Dumped near by
- (4) Collected by special collection
- (5) I do not discharge
- (6) Other
- (7) No answer



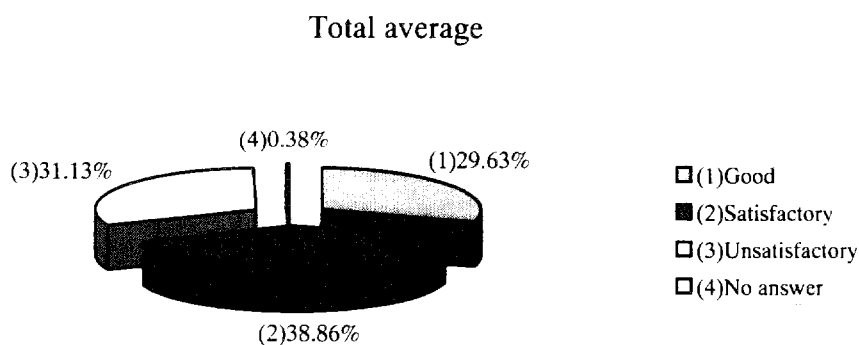
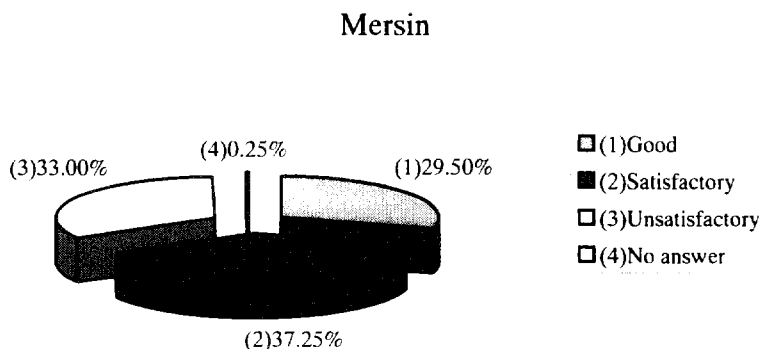
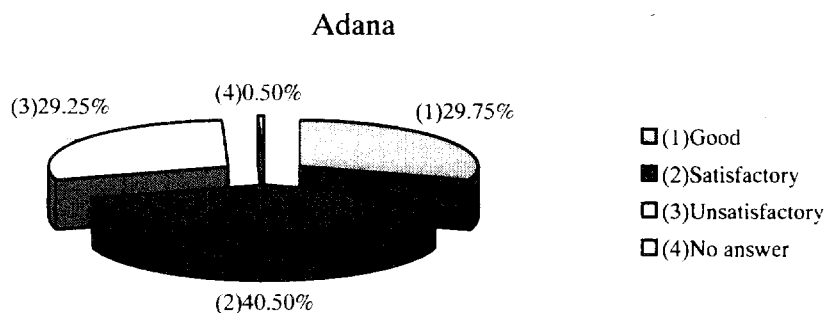
- (1) Collected by regular collection
- (2) Collected by push cart
- (3) Dumped near by
- (4) Collected by special collection
- (5) I do not discharge
- (6) Other
- (7) No answer



- (1) Collected by regular collection
- (2) Collected by push cart
- (3) Dumped near by
- (4) Collected by special collection
- (5) I do not discharge
- (6) Other
- (7) No answer

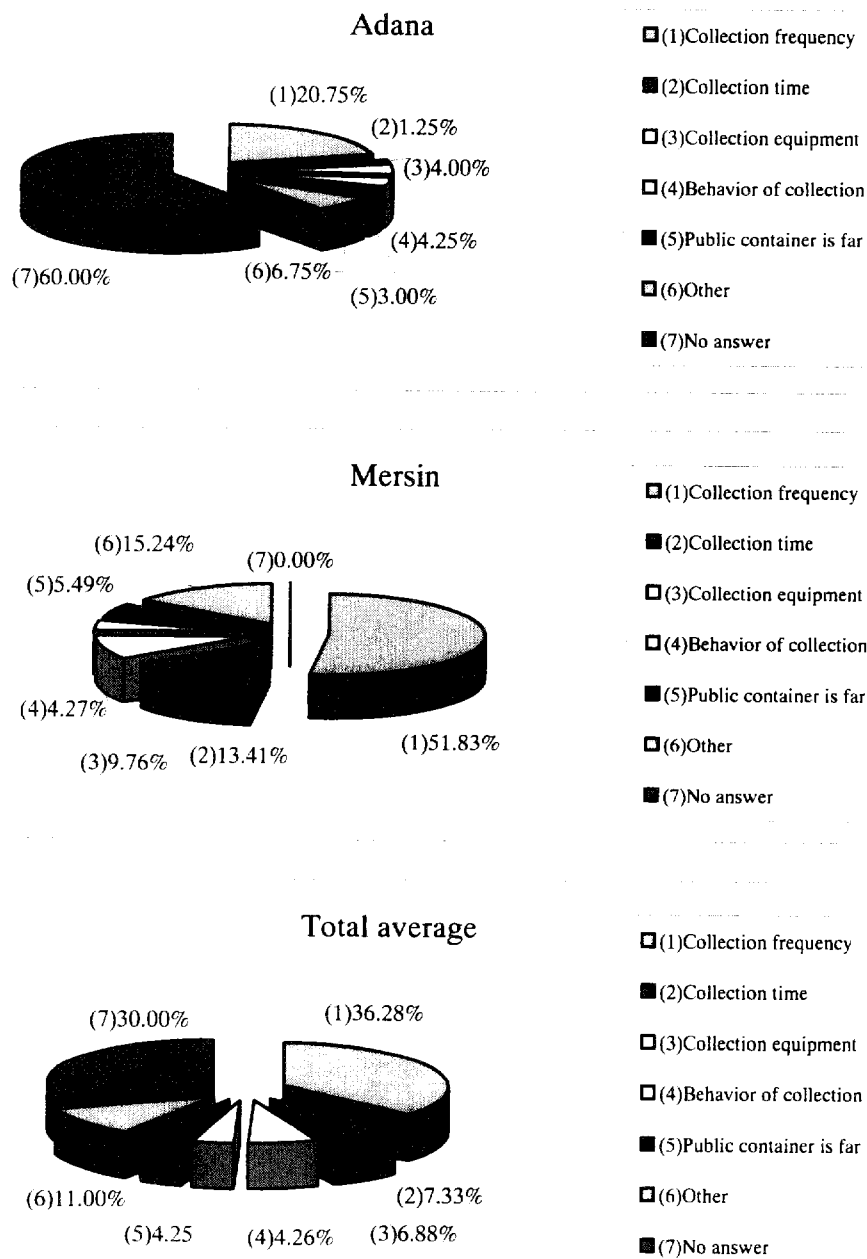
When asked about how garden wastes are disposed of, 36.00% of the residents in Adana said they disposed them along with household wastes during ordinary waste collection periods. In Mersin, 41.00% of the residents said they do not discharge garden wastes. This may be attributed to the difference in living conditions in both greater municipalities.

Q.1.14 How do you rate the present refuse collection?



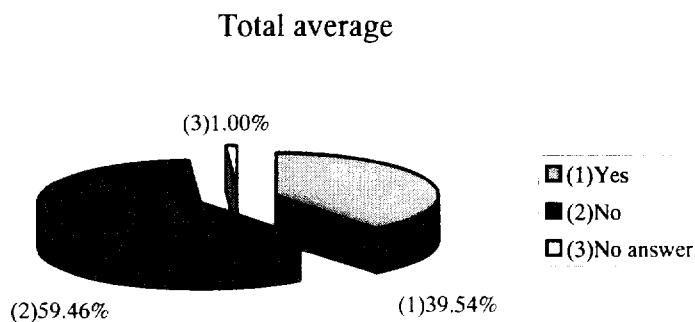
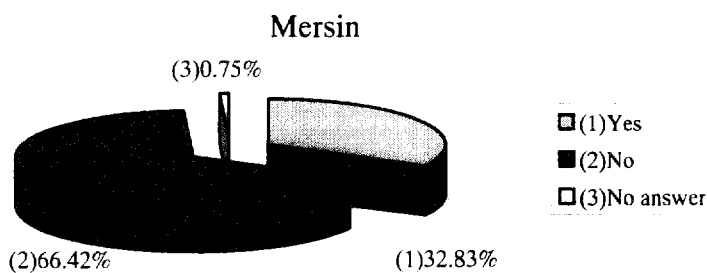
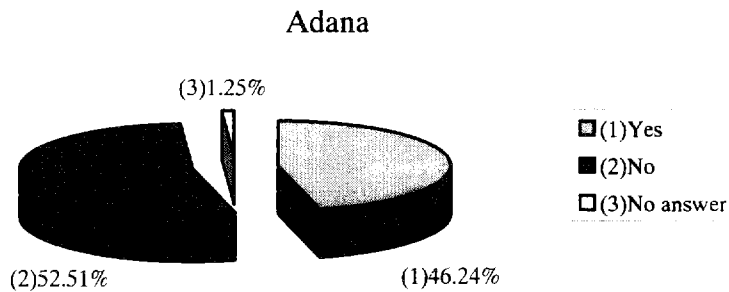
Approximately 85% of the residents in both greater municipalities indicate satisfaction with the current collection services, while approximately 30% expressed dissatisfaction.

Q.1.15 If unsatisfactory, what needs to be improved?



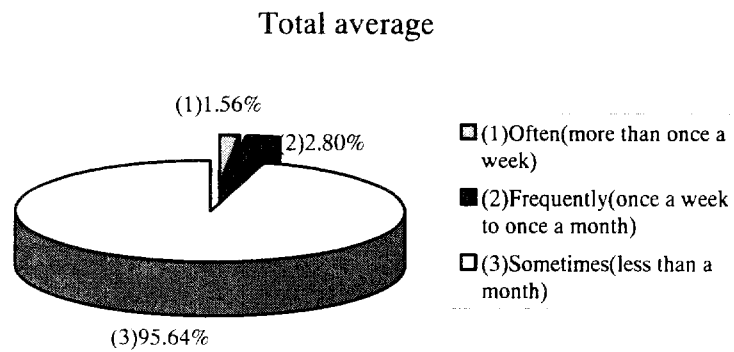
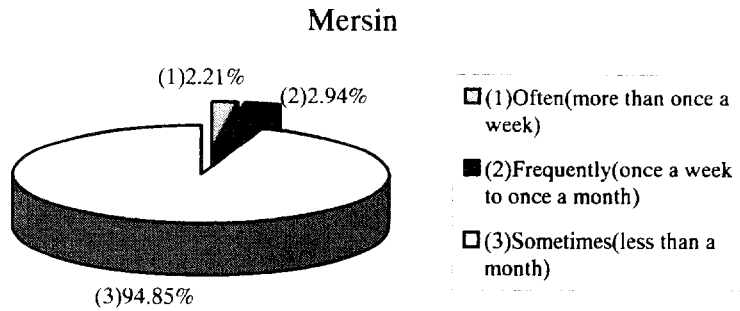
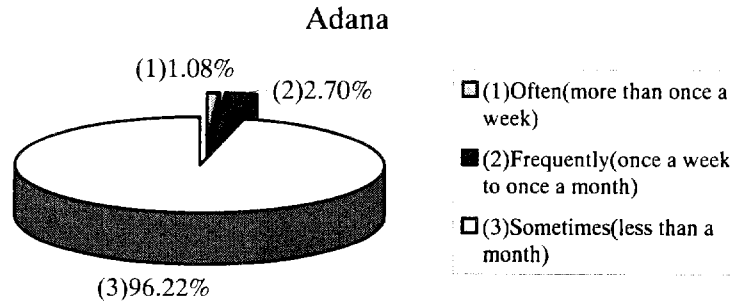
Based on the answers to *Q.1.14*, about 85% of the total number of residents in both greater municipalities receive more than thrice a week collection services. When asked as to what needs to be improved, about half of the residents in both areas who expressed dissatisfaction in *Q.1.14* demand more frequent collection services.

Q.2.1 Do you sell valuable/recyclable wastes to push carts?



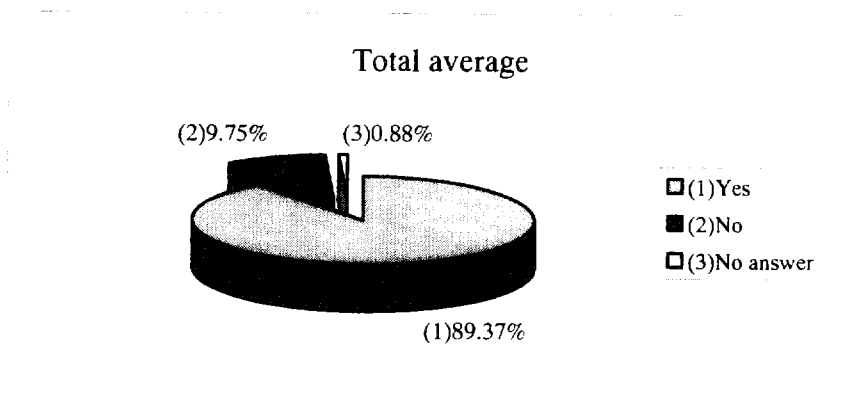
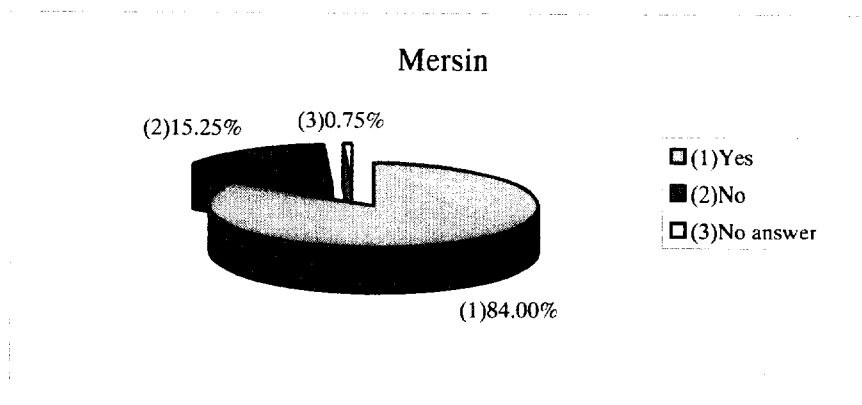
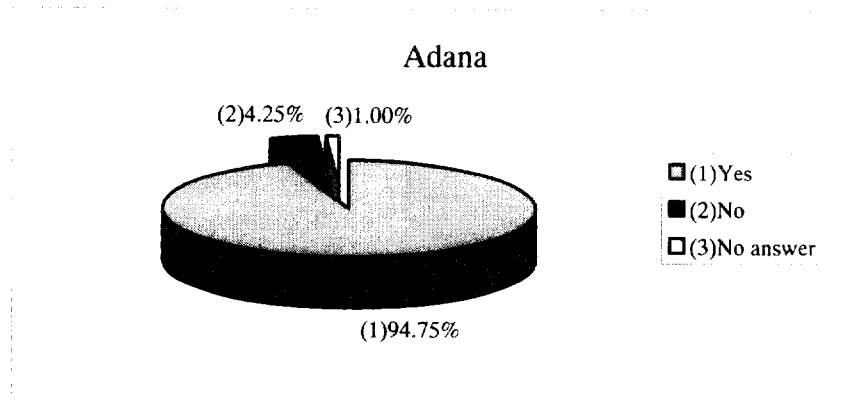
The number of residents selling valuable/recyclable wastes to push carts is 46.24% in Adana and 32.83% in Mersin. Approximately 40% of the residents in both greater municipalities recycle wastes by selling them to push carts. Push carts play a major role in waste recycling.

Q.2.2 If yes, how often do you sell them?



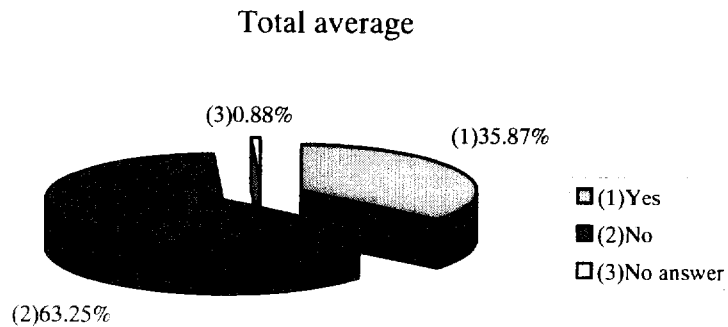
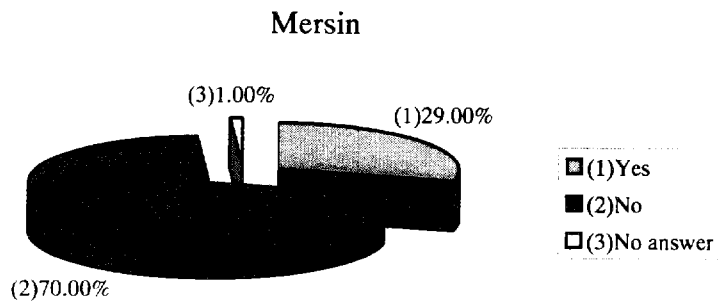
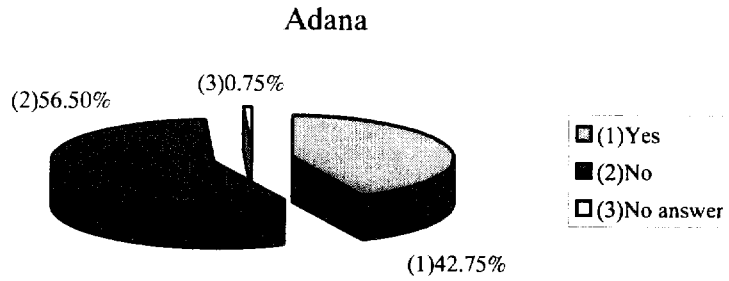
95.64% of residents who answered they use push carts in Q.2.1 say they sell recyclable wastes at an average of less than once a month. It is, therefore, assumed that the residents save up any valuable materials to a certain amount and sell them in bulk.

Q.2.3 Do you think it is important to recycle materials under the public authority's control?



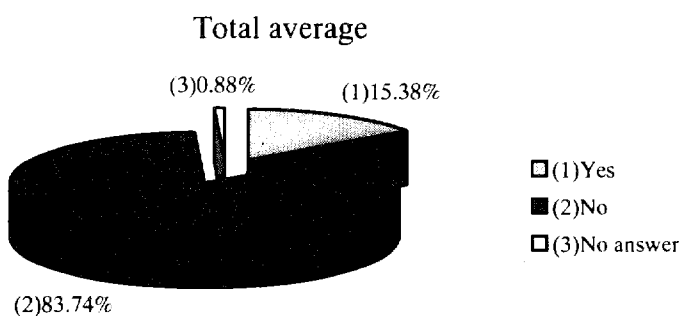
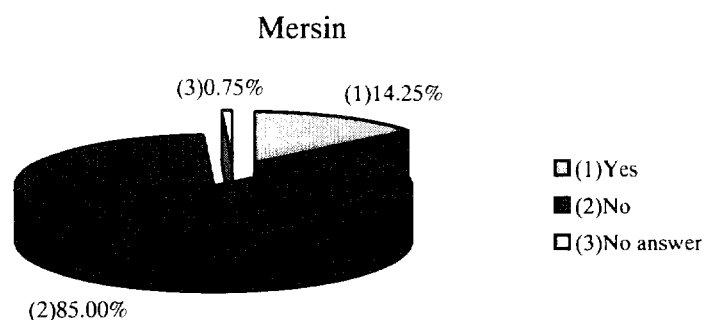
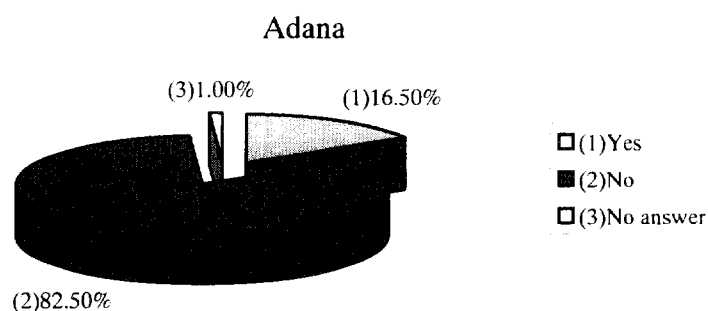
Of the total number of residents in both greater municipalities, around 90% acknowledge the importance of carrying out recycling activities under the supervision and control of public institutions.

Q.2.4 Do you know that some enterprises buy recyclable materials?



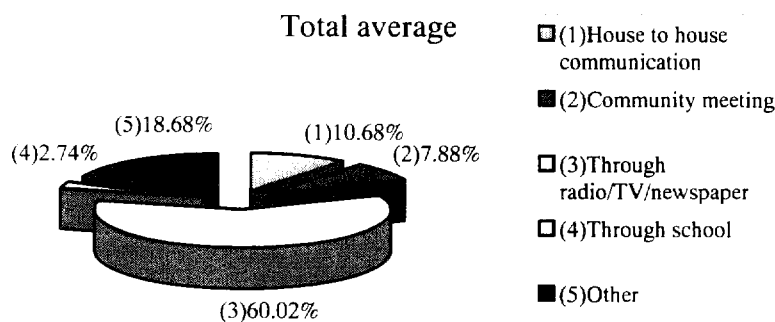
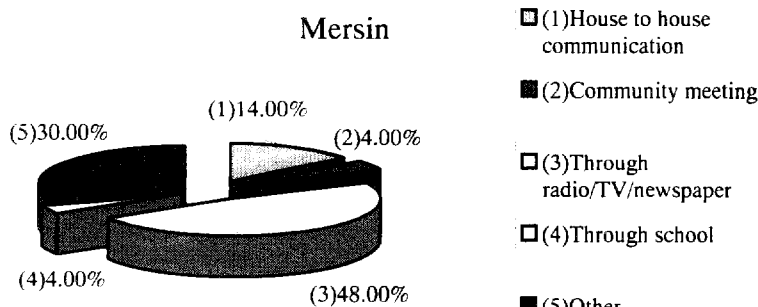
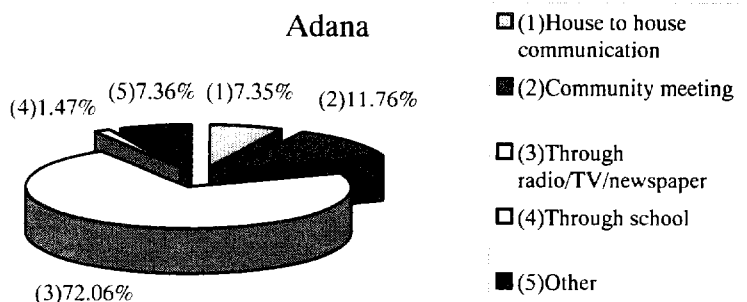
The number of residents in both greater municipalities unaware that there are enterprises purchasing recyclable materials totals 63.25%: 56.50% in Adana and 70.00% in Mersin.

Q.2.5 Do you know any campaign for waste segregation before collection?



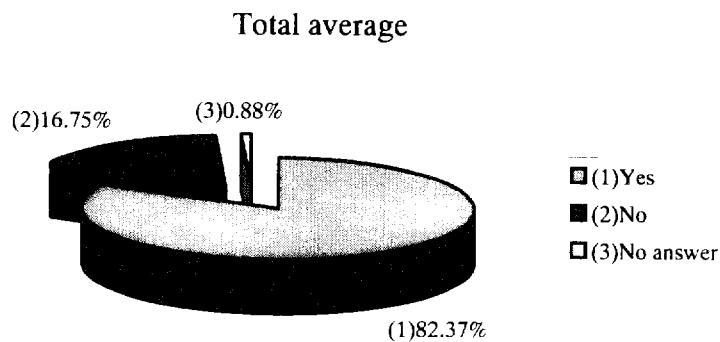
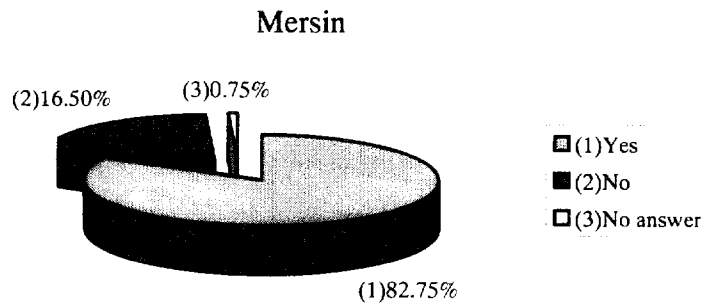
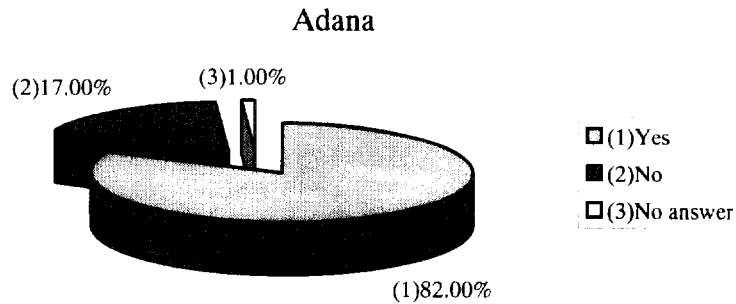
The number of residents in both greater municipalities unaware of any waste segregation campaign totals 83.74%. It is, therefore, assumed that waste segregation is not being widely practiced in either greater municipality.

Q.2.6 If yes to Q.2.5, how did you become aware of it?



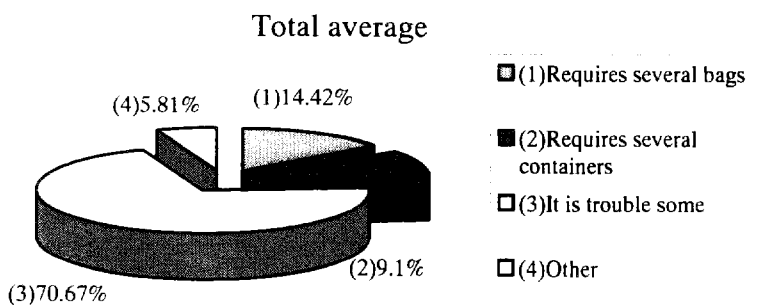
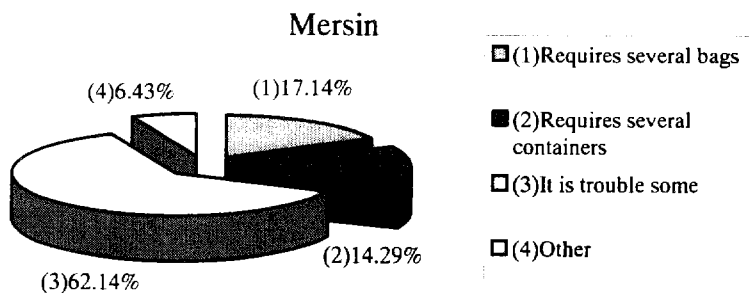
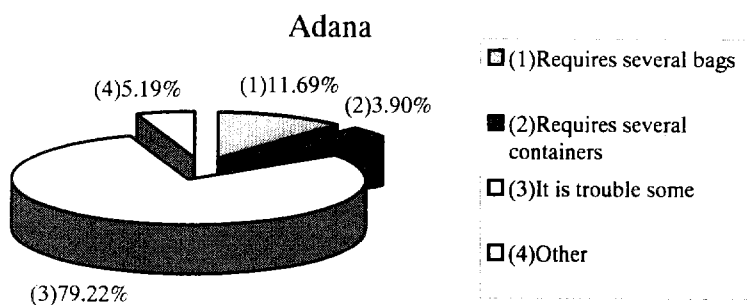
Of the total number of residents (15.38%) who responded they are aware of the existence of waste segregation campaigns in Q.2.5, 60.02% pointed the radio/TV/newspaper as their sources. The use of the mass media to actively promote such a campaign is considered very effective therefore.

Q.2.7 If you are aware, do you practice refuse segregation?



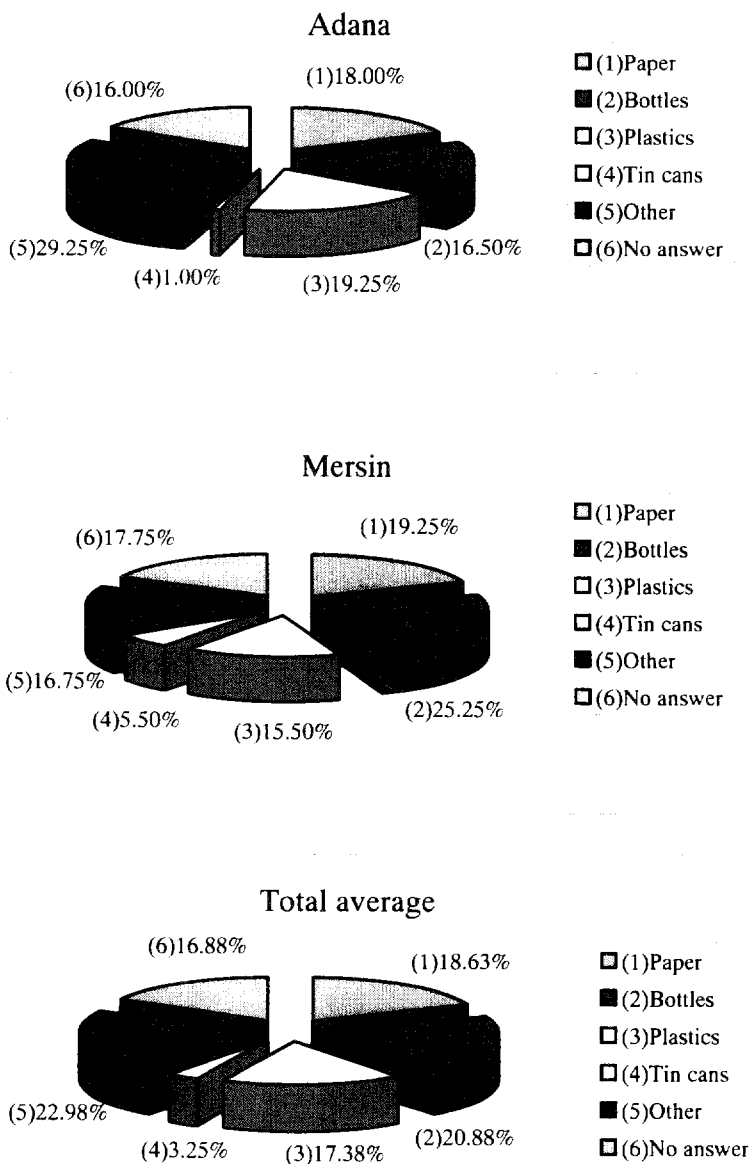
A high number of residents said they are willing to cooperate in waste segregation if they think it is necessary. The total number of residents who feel this way in both greater municipalities averages 82.37%. Considering that the residents are quite highly aware of the importance of cooperation, increasing their awareness of waste segregation would most likely lead to gaining their cooperation in this area.

Q.2.8 If you don't practice, why?



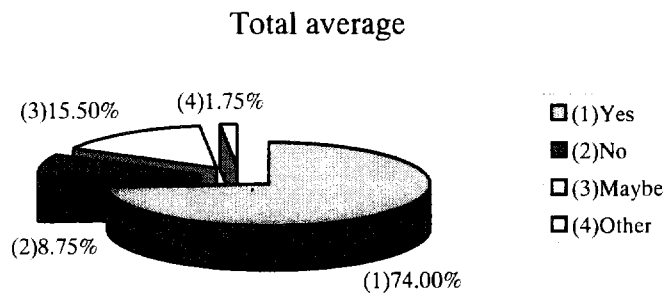
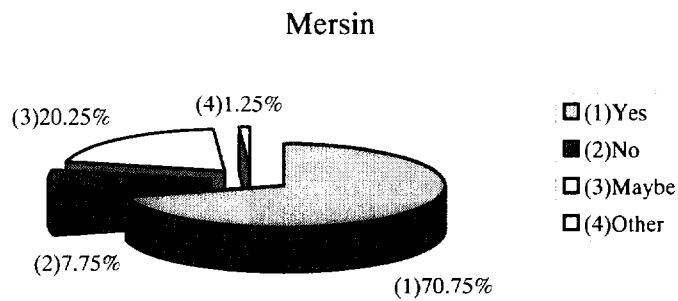
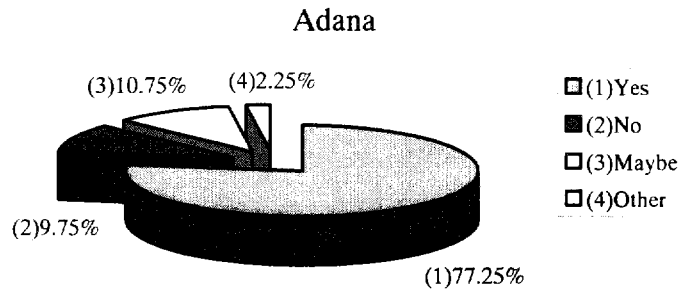
Of the residents who answered no to Q.2.7, 70.67% pointed out the troublesome nature of the activity as a reason. Accordingly, to gain the cooperation of these residents, they should be made fully aware of the importance of waste segregation. In addition, studies should be made to fully establish a system, e.g., purchase of recyclable materials, that would provide the residents with some form of incentive.

Q.2.9 If yes to Q.2.7, what do you usually segregate?



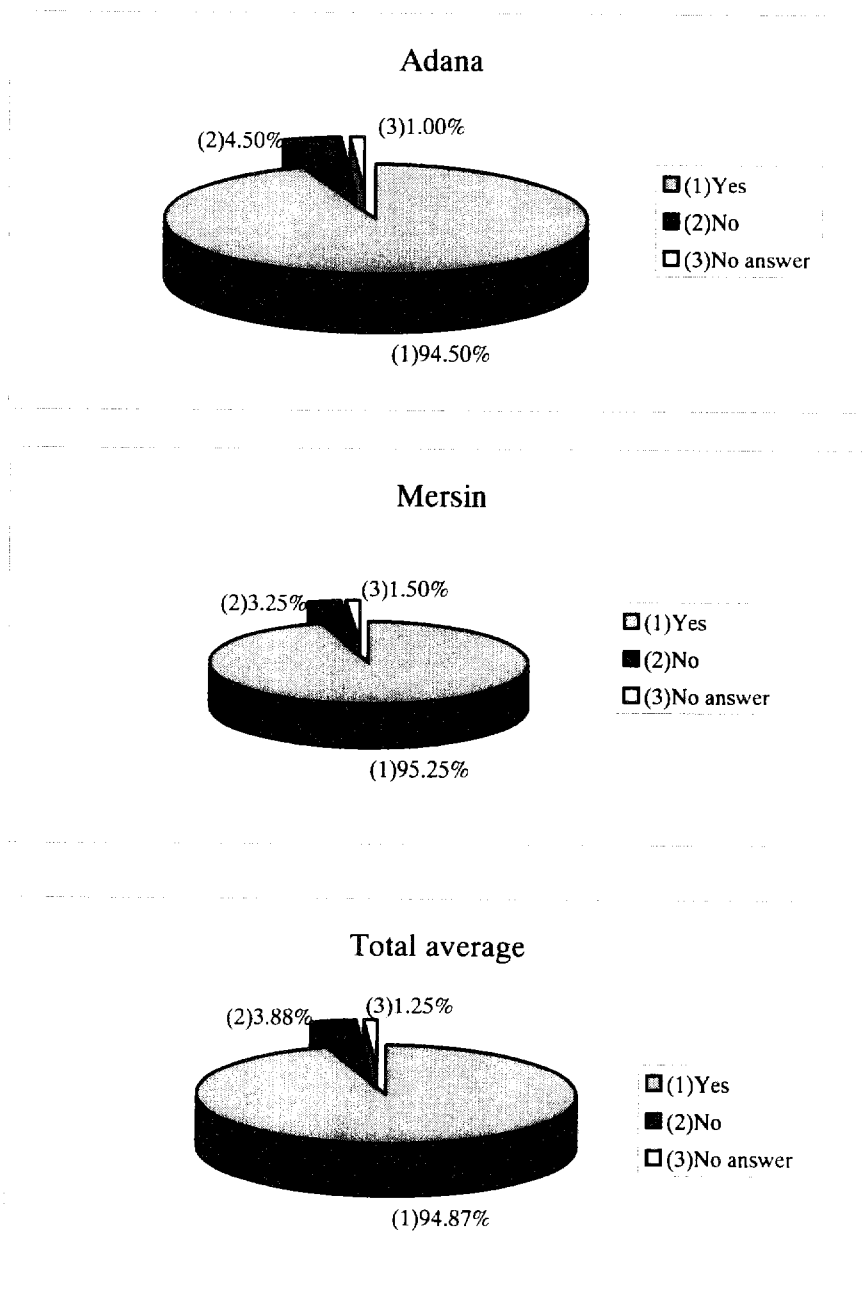
The residents who answered yes to Q.2.5 said they mainly segregate paper, bottles, and plastic. Only a small number (3.25%) segregate tin cans, leading to the assumption that the reuse of cans is hardly practiced.

Q.2.10 If you were requested to do waste segregation for recycling, would you do so?



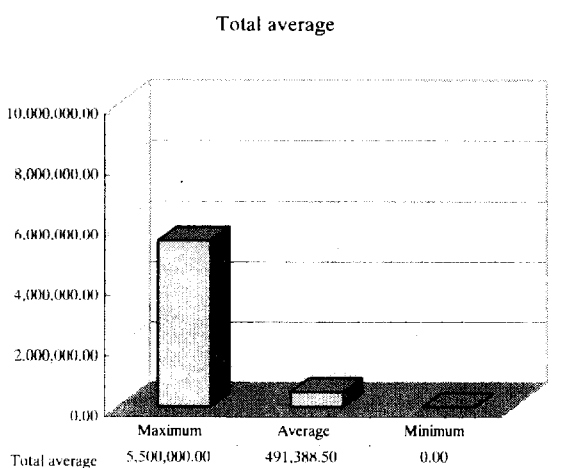
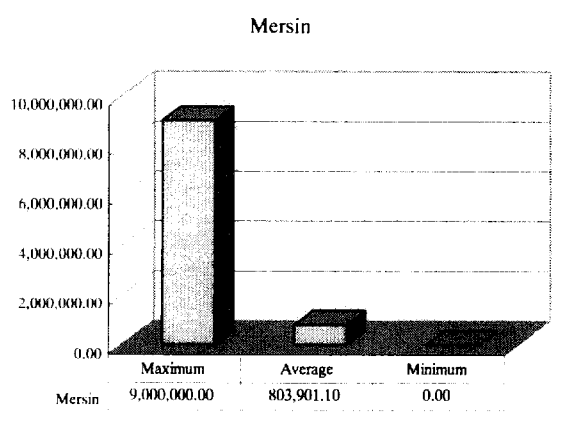
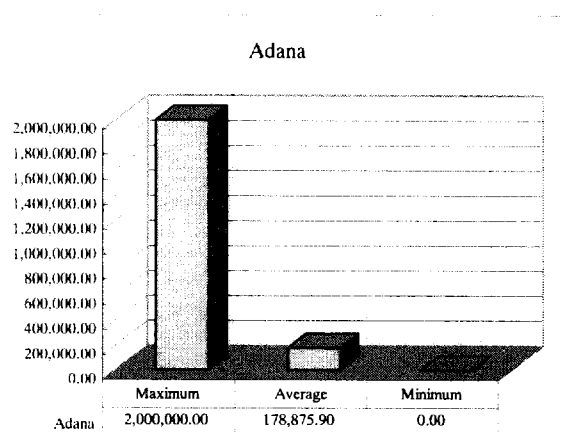
Of the total number of residents in both greater municipalities, 74.00% said they are willing to cooperate in waste segregation when and if requested, while 8.75% expressed unwillingness to do so.

Q.3.1 Do you pay for refuse collection fee?



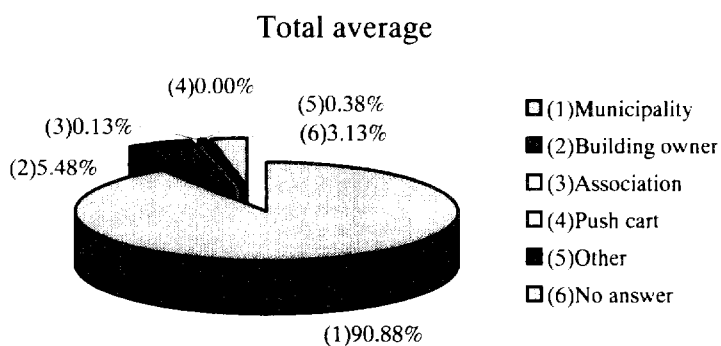
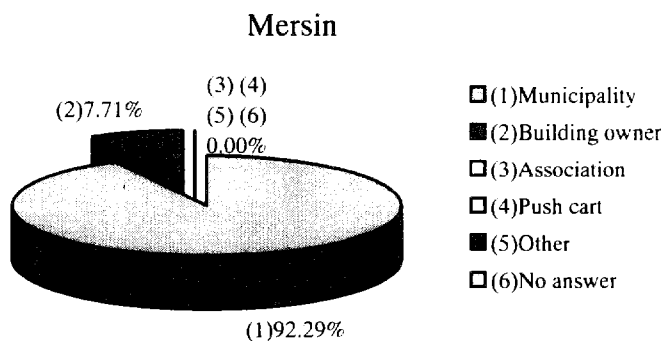
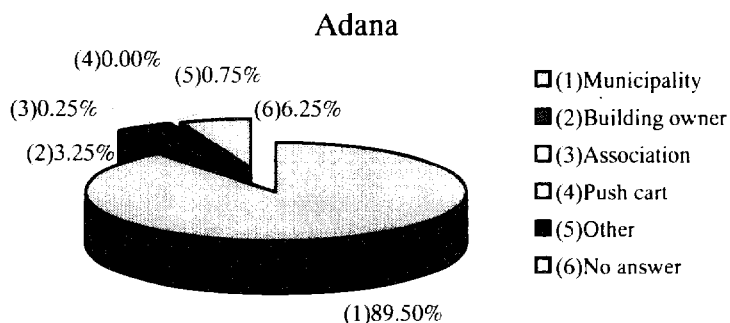
In both greater municipalities, about 94.87% of the residents said they pay the refuse collection fee, indicating how extremely cooperative the residents are even with the payment of the refuse collection fee.

Q.3.2 If yes to Q.3.1, how much do you pay per month (Turkish Lira)?



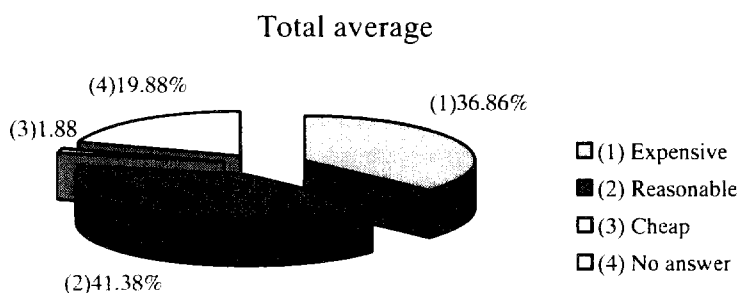
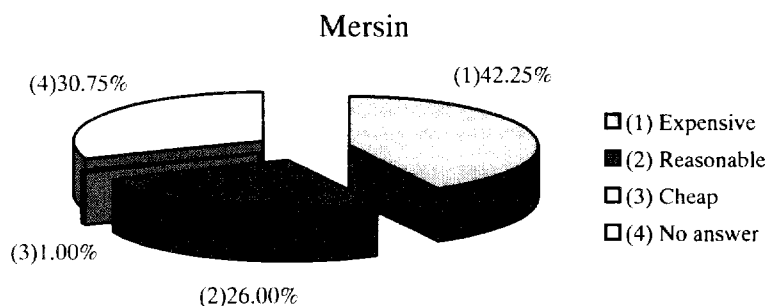
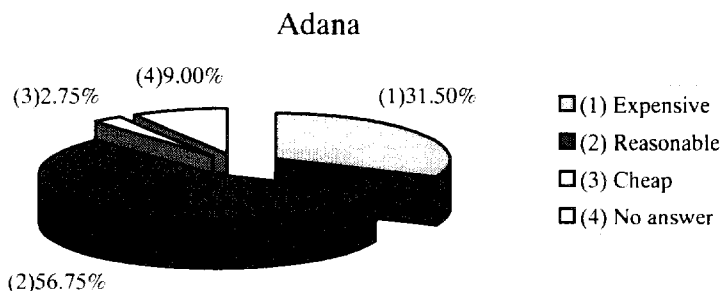
In Adana, the maximum amount paid for waste collection services is 2 million TL/month, while the average is approximately 180 thousand TL/month. In Mersin, the highest is 9 million TL/month, while the average is approximately 800 thousand TL/month. Based on these figures, the residents of Mersin pay four times as much as the residents of Adana.

Q.3.3 If yes to Q.3.1, to whom do you pay?



Of the residents (approximately 95%) who said yes to **Q.3.1**, around 90% said they pay the fee to the municipality.

Q.3.4 If you pay refuse collection fee, how do you think it?



In Adana, the majority of the residents (56.75%) think the collection fee is reasonably priced; 31.50% think that the current collection fee is high. In Mersin, almost half of the residents (42.25%) think the collection fee is high; only 26.00% thinks it is reasonable. The differences in perception here is a result of the discrepancy in the amount paid (with Mersin being 4 times expensive as Adana) as clearly emphasised in Q.3.2.