

13.4 Environmental Characteristics of the Project Site

13.4.1 The Area Influenced by the project

13.4.1.1 Land Use

Among the area within 1.5 km radius of the proposed site, it is supposed that the area within 1 km radius is probable zone of impact and the rest is buffer zone.

In probable zone and buffer zone 7 various land use activities have been determined (Figure 13-5). The major activity is land cultivation which is practised on the area about 534 ha (75.6 % in the total area). The main crop is wheat in the cultivated lands. 207.8 ha of these lands is located in the probable zone and 326.2 ha in the buffer zone (Table 13-9).

When Figure 13-5 is examined, it can be clearly recognised that the former woodland has been replaced by land cultivation. Remnant vegetation and other land use activities have a scarce distribution in this structure. Recently arable lands have been either occupied by settlements or used by activities for the supply of raw material and a dump site for solid waste disposal. Topographic properties and changes in land ownership are the effective factors on scarce distribution of limited cultivated land patches.

Table 13-9: Distribution of the Land Subjected to Various Land Use Activities in and Around the Proposed Site

Zones	Distribution of the land use types to the zones (hectares)							Total area
	Cultivation	Grazing	Fallow fields	Ponds	Settlement	Excavation	Waste disposal	
1. Probable Zone	207.8 (% 66,1)	42.2 (%13.4)	9,4 (% 3,0)	6,2 (% 2,0)	6,2 (%2,0)	17,2 (% 5,5)	25 (% 8,0)	314.0 (% 44)
2. Buffer Zone	326.2 (% 83.1)	34,3 (8,7)	-	1,6 (%0,4)	17,1 (% 4,4)	3,9 (% 1,0)	9,4 (% 2,4)	392.5 (%56)
Total	534.0 (% 75.6)	76,5 (% 10,8)	9,4 (1,3)	7,8 (% 1,1)	23,3 (% 3,3)	21,1 (% 3,0)	34,4 (% 4,9)	706.5

An area of 9.4 ha has been taken out of cultivation. These fallow fields are located in the probable zone.

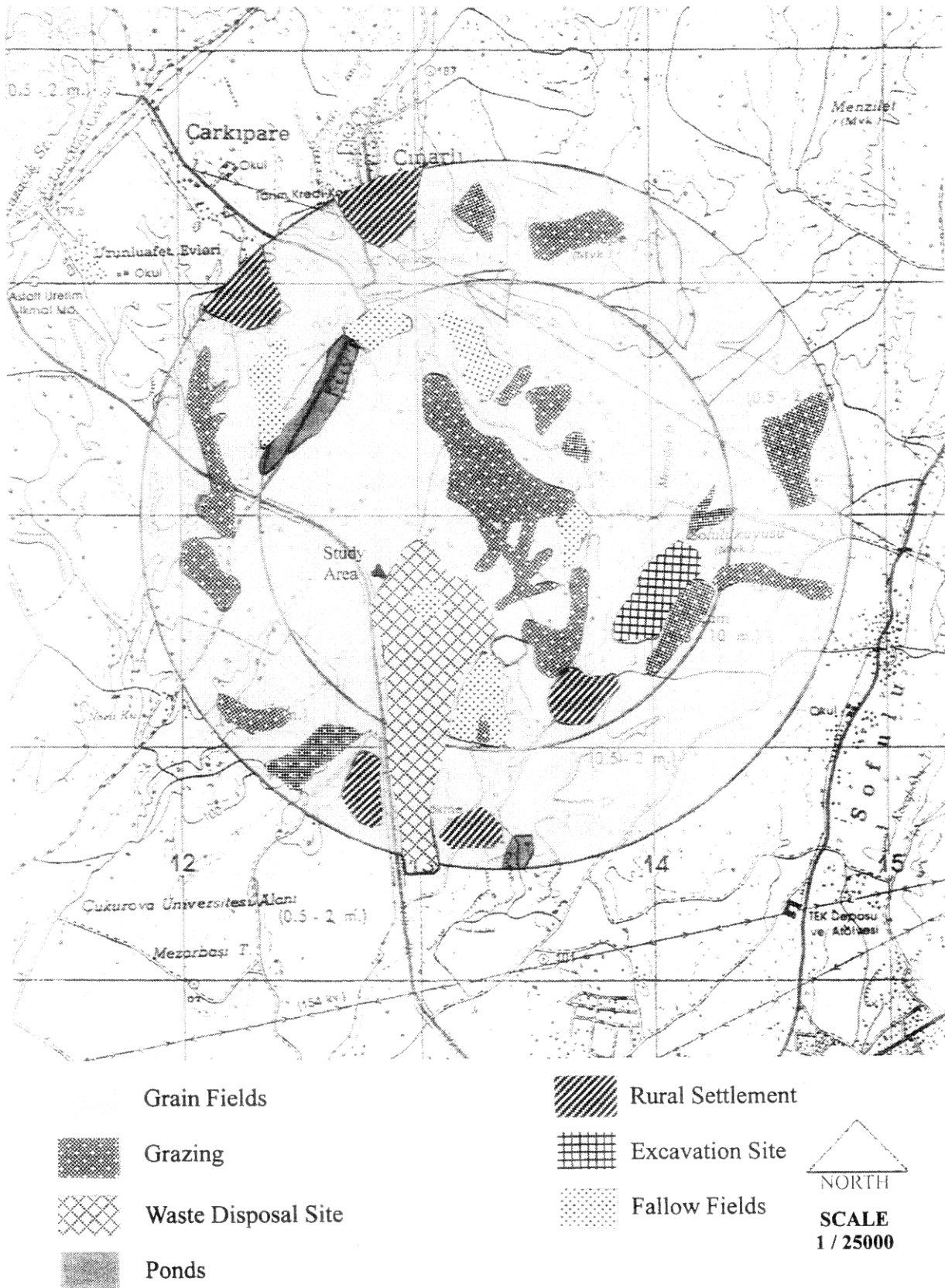


Figure 13-5: Land Use Types of Adana-Sofulu Waste Disposal Site and the Vicinity