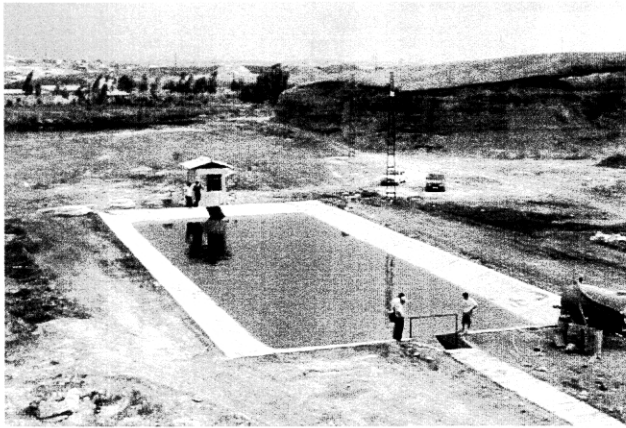


**Plate 8 : Pilot Project in Adana (2)**



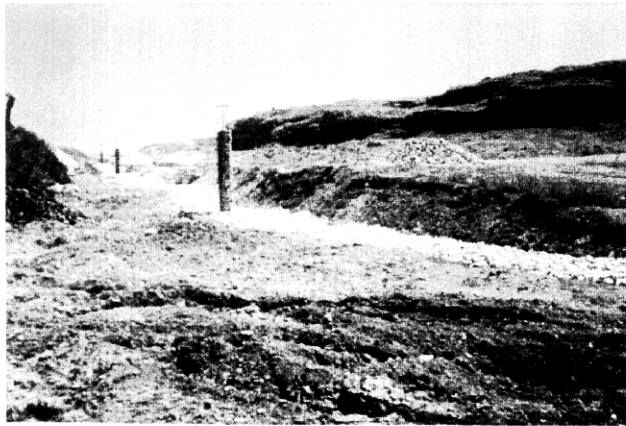
Regulation Pond

Leachate collected via the main leachate drain flows into the regulation pond.



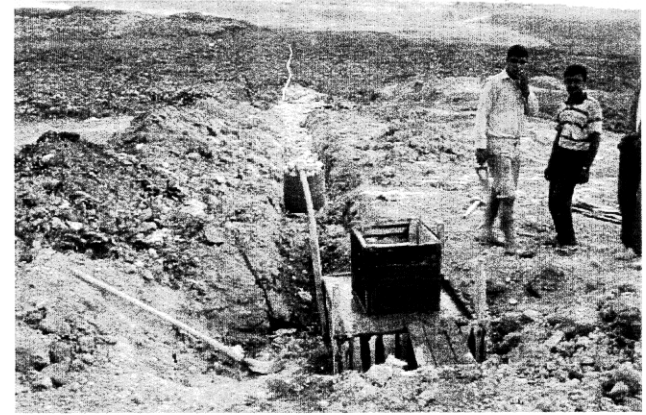
Pump Station

Leachate is pumped back to the disposal area from the regulation pond.



Gas Removal Facilities

Gas removal facilities were installed to remove gases from the landfill.



Circulation Facilities (Feeding Drum and Drain)

Leachate pumped up to leachate feeding drum and drain is discharged back into the landfill.



Cover Soil

Cover soil was applied by Adana GM to extinguish fire and remove smoke.



Buffer Zone

A 50m wide buffer zone was constructed to isolate the disposal site from the surrounding area.