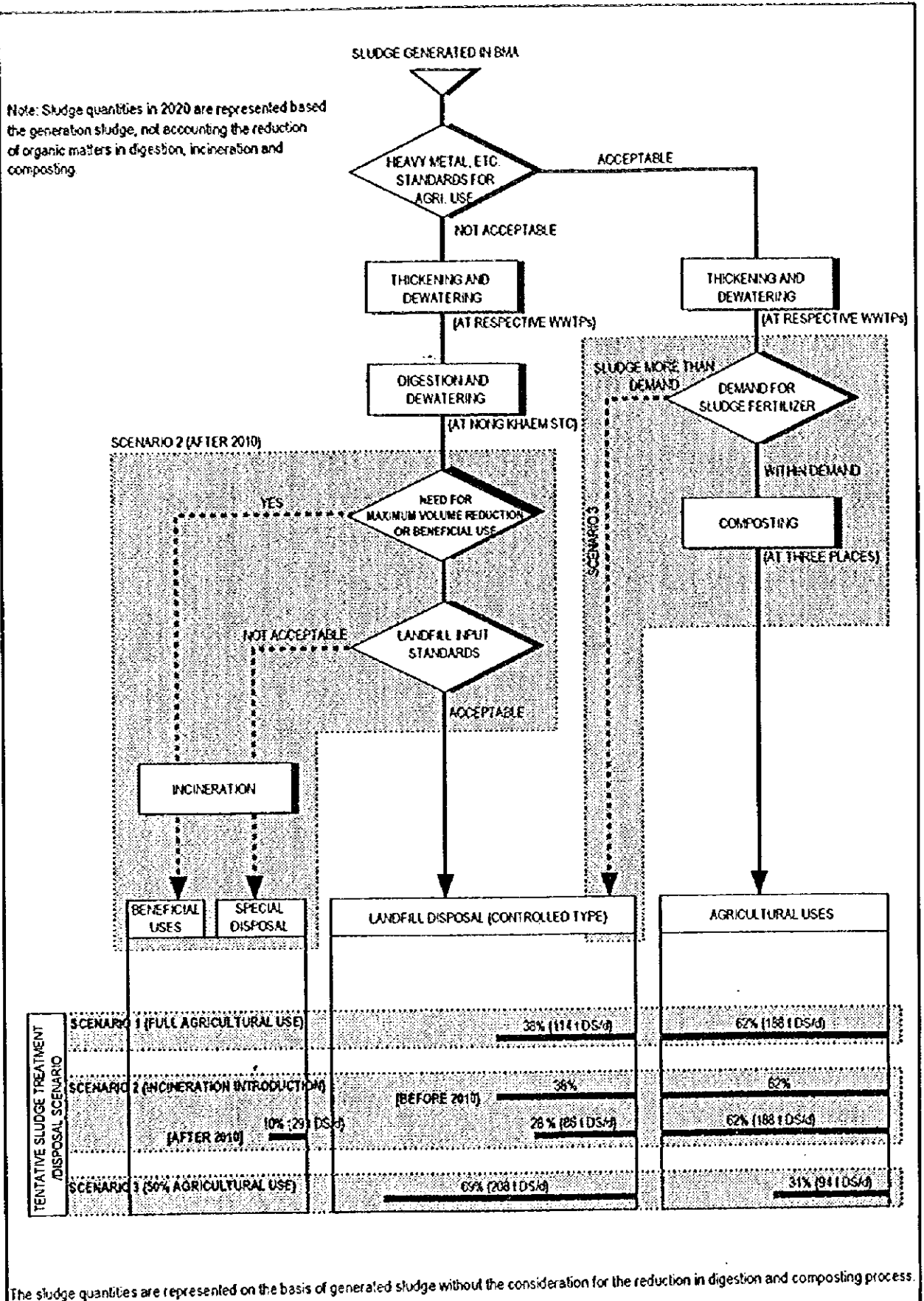


Figure 7.5.1.1  
**OVERALL SLUDGE TREATMENT/  
 DISPOSAL FLOW DIAGRAM IN 2020**

**THE STUDY FOR MASTER PLAN ON  
 SEWAGE SLUDGE TREATMENT / DISPOSAL AND  
 RECLAIMED WASTEWATER REUSE IN BANGKOK**  
**JAPAN INTERNATIONAL COOPERATION AGENCY**

Note: Sludge quantities in 2020 are represented based the generation sludge, not accounting the reduction of organic matters in digestion, incineration and composting.

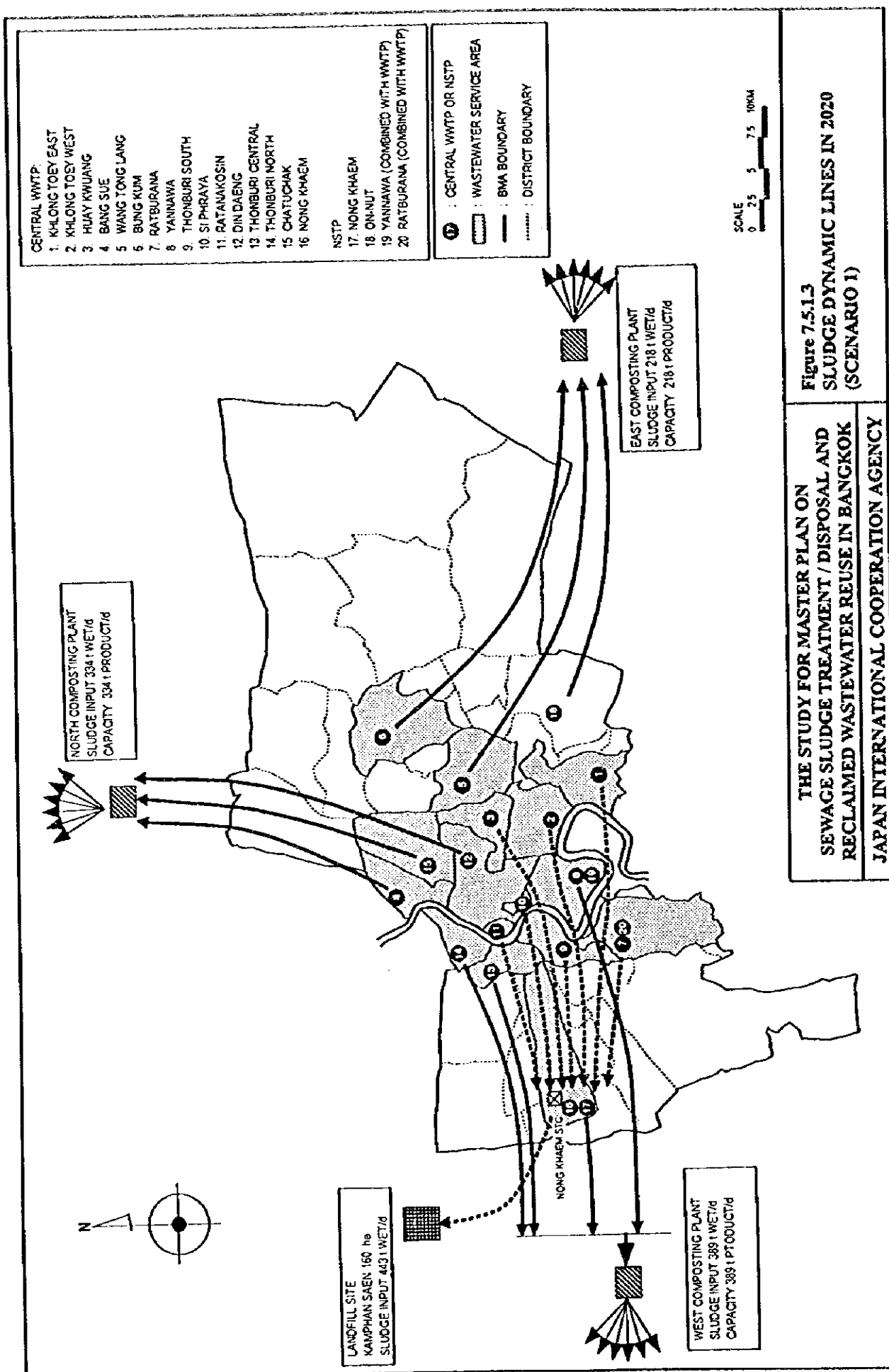


The sludge quantities are represented on the basis of generated sludge without the consideration for the reduction in digestion and composting process.

THE STUDY FOR MASTER PLAN ON  
SEWAGE SLUDGE TREATMENT / DISPOSAL AND  
RECLAIMED WASTEWATER REUSE IN BANGKOK

JAPAN INTERNATIONAL COOPERATION AGENCY

Figure 7.5.1.2  
CONCEPTUAL FLOW OF SLUDGE  
TREATMENT/DISPOSAL SCENARIOS



**THE STUDY FOR MASTER PLAN ON SEWAGE SLUDGE TREATMENT / DISPOSAL AND RECLAIMED WASTEWATER REUSE IN BANGKOK**  
**JAPAN INTERNATIONAL COOPERATION AGENCY**

**Figure 7.5.1.3**  
**SLUDGE DYNAMIC LINES IN 2020**  
**(SCENARIO 1)**

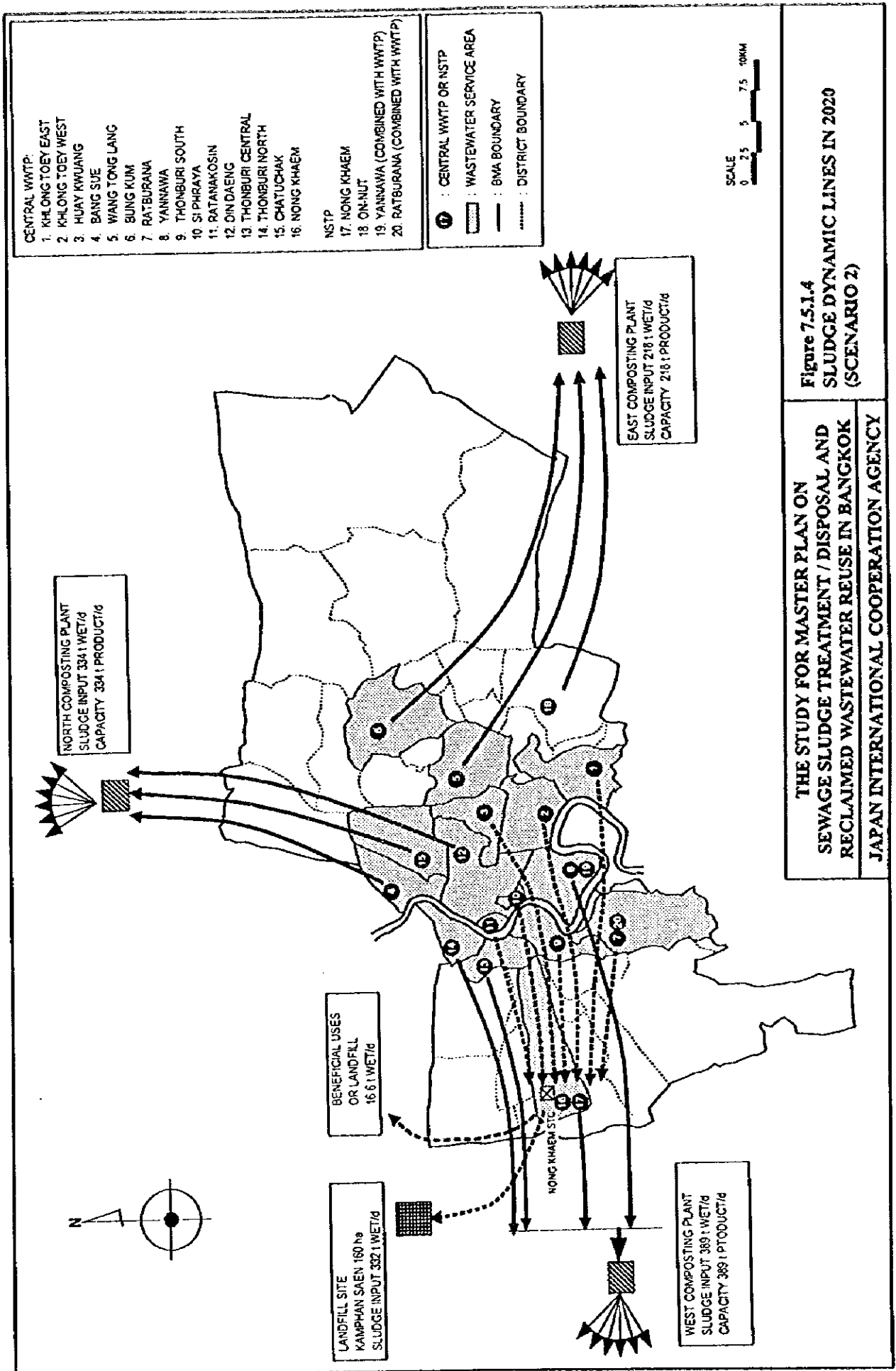


Figure 7.5.1.4  
SLUDGE DYNAMIC LINES IN 2020  
(SCENARIO 2)

THE STUDY FOR MASTER PLAN ON  
SEWAGE SLUDGE TREATMENT / DISPOSAL AND  
RECLAIMED WASTEWATER REUSE IN BANGKOK  
JAPAN INTERNATIONAL COOPERATION AGENCY

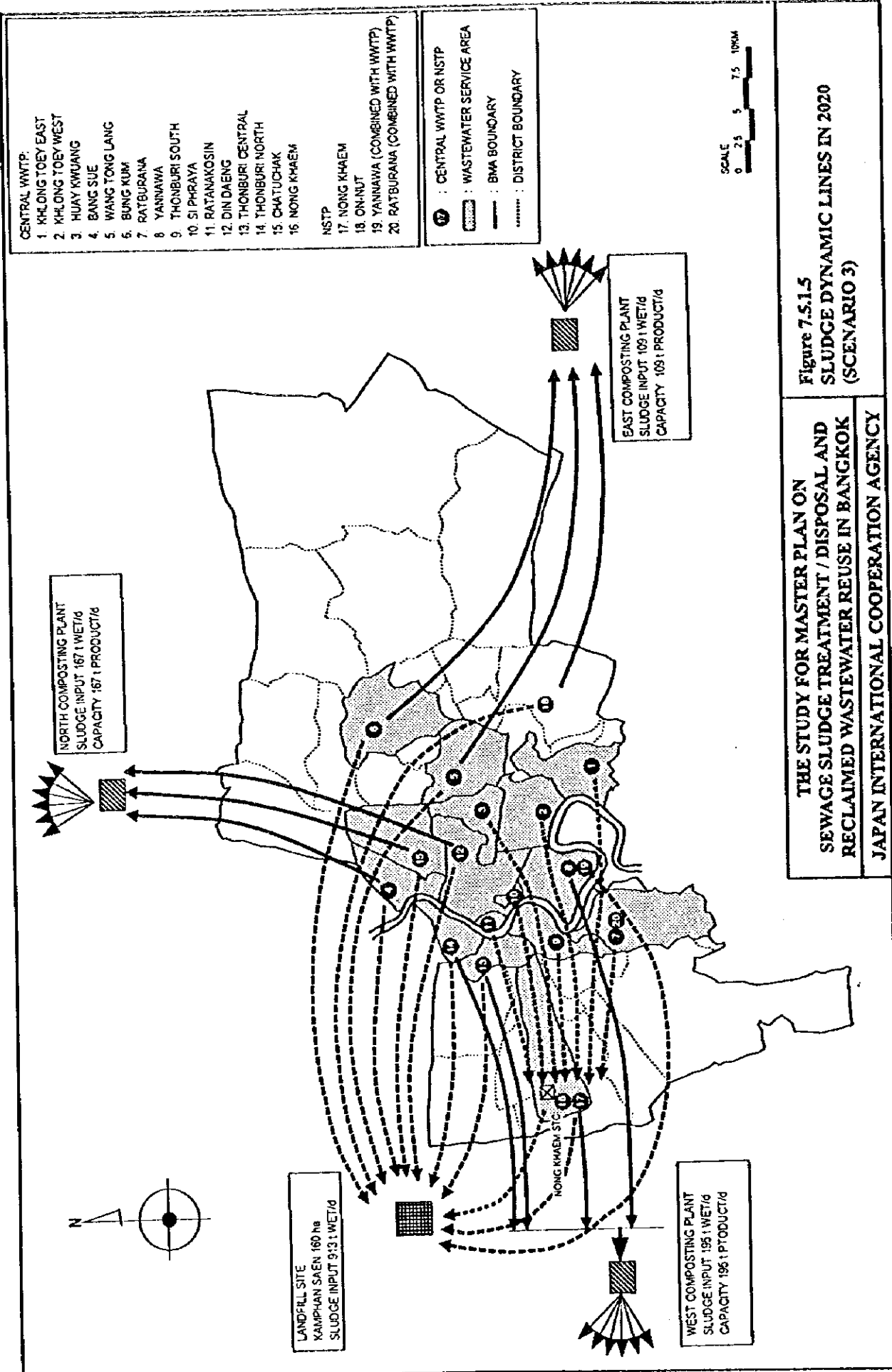
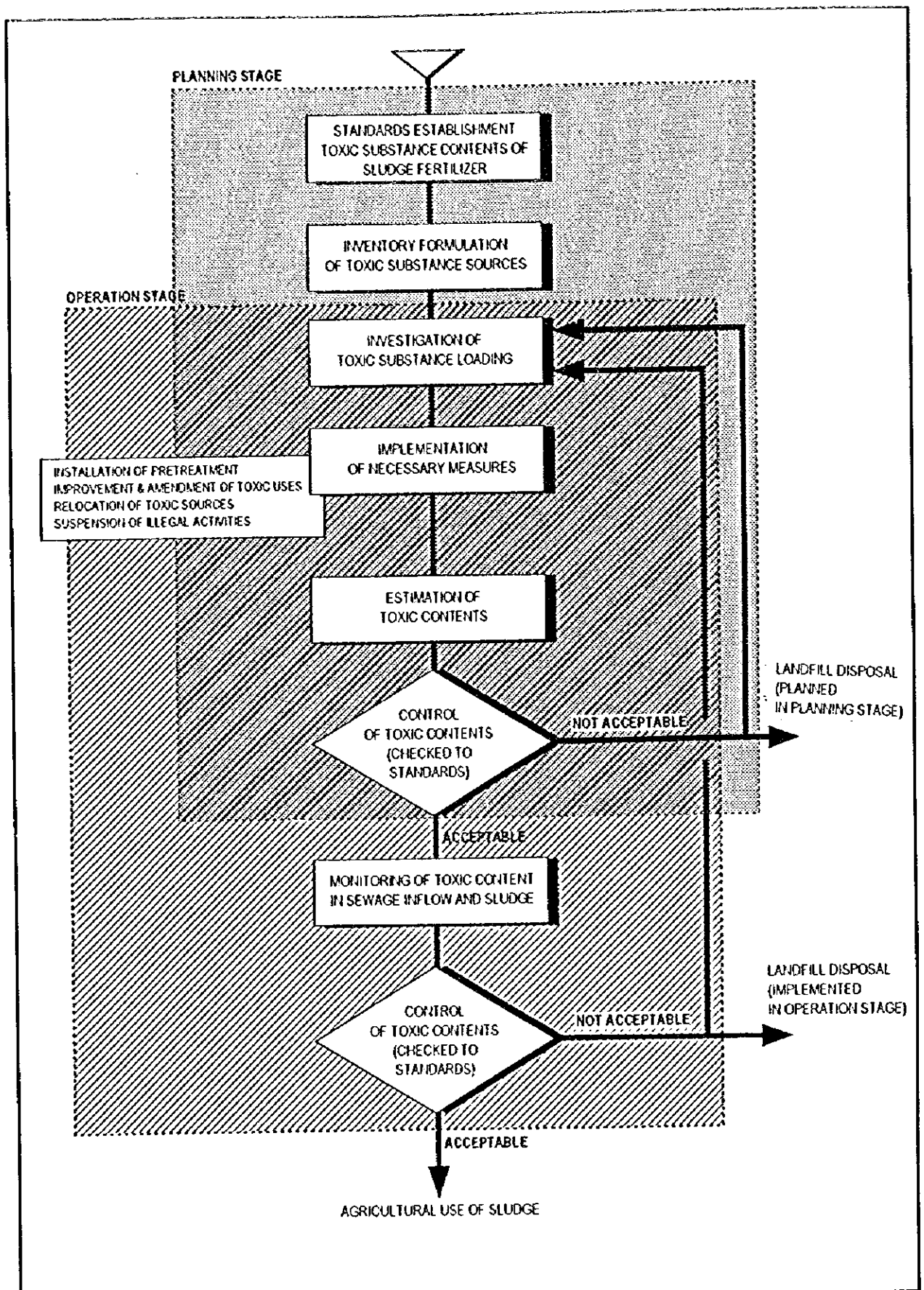


Figure 7.5.15  
SLUDGE DYNAMIC LINES IN 2020  
(SCENARIO 3)

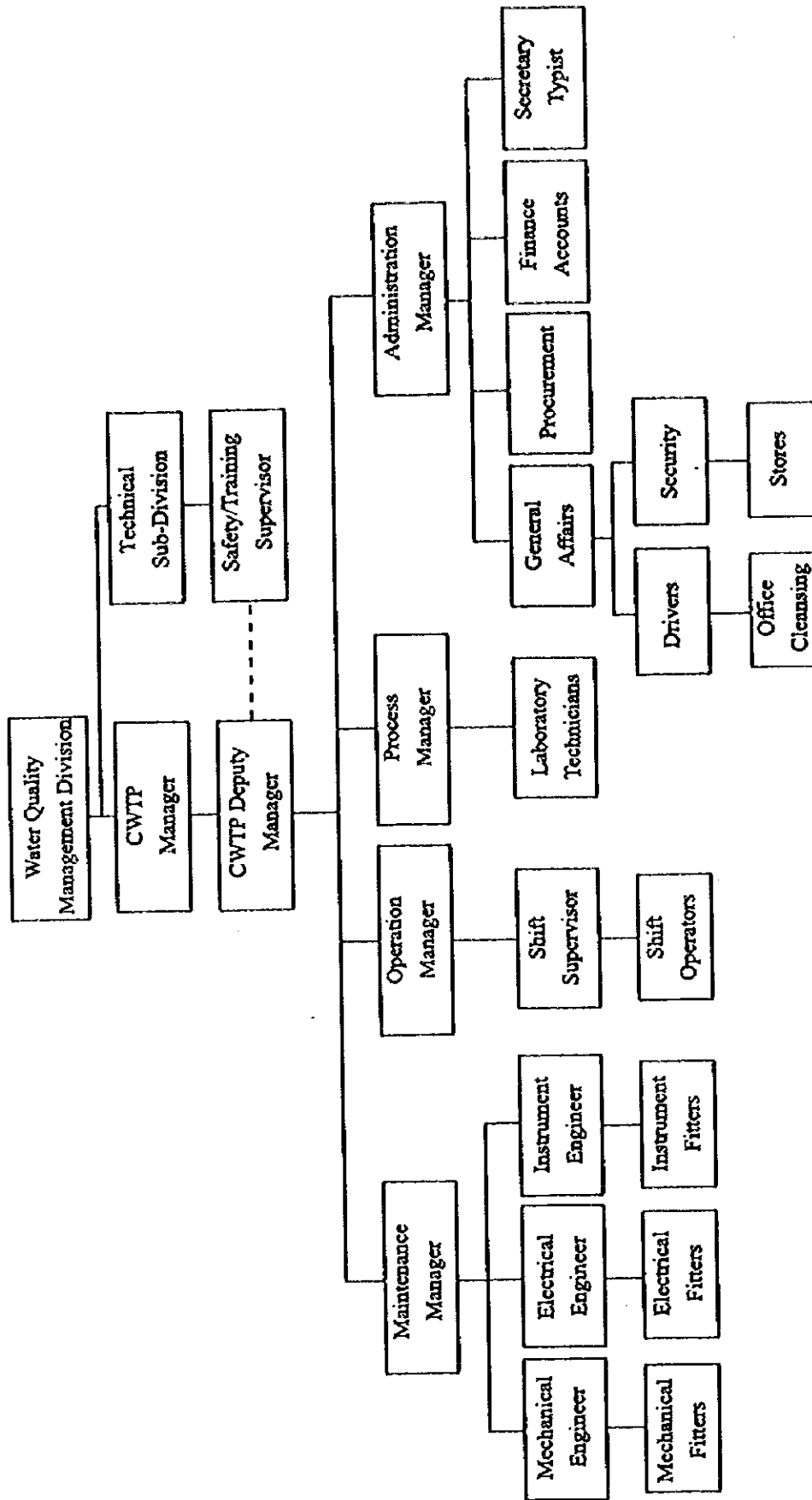
THE STUDY FOR MASTER PLAN ON  
SEWAGE SLUDGE TREATMENT / DISPOSAL AND  
RECLAIMED WASTEWATER REUSE IN BANGKOK  
JAPAN INTERNATIONAL COOPERATION AGENCY



THE STUDY FOR MASTER PLAN ON  
SEWAGE SLUDGE TREATMENT / DISPOSAL AND  
RECLAIMED WASTEWATER REUSE IN BANGKOK

JAPAN INTERNATIONAL COOPERATION AGENCY

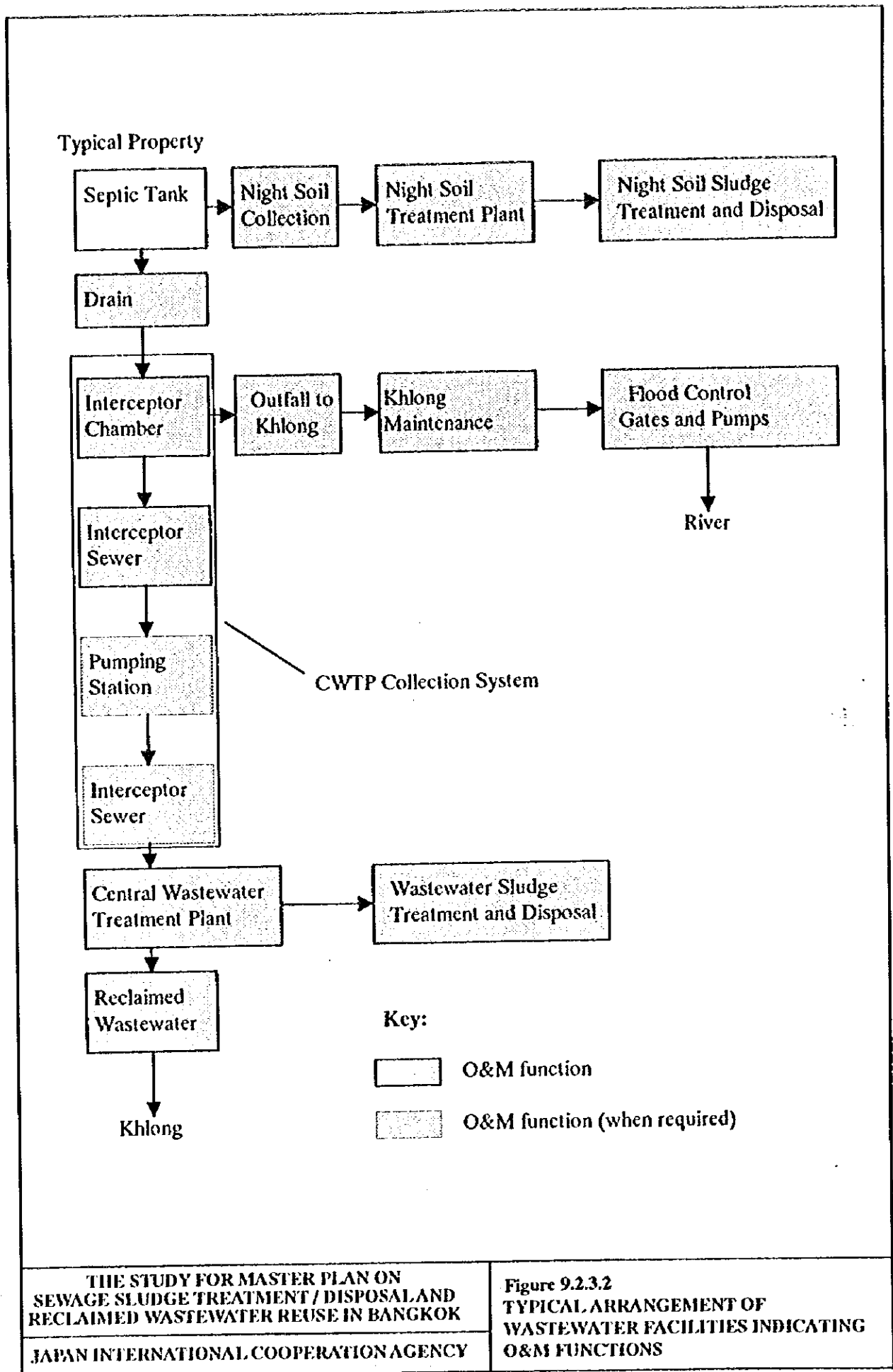
Figure 7.6.1.1  
SELECTION PROCEDURE FOR  
AGRICULTURAL USE OF SLUDGE



— Line of administrative management  
 - - - Line of plant level liaison / reporting

THE STUDY FOR MASTER PLAN ON SEWAGE SLUDGE TREATMENT / DISPOSAL AND RECLAIMED WASTEWATER REUSE IN BANGKOK  
 JAPAN INTERNATIONAL COOPERATION AGENCY

Figure 9.2.3.1 ORGANIZATION STRUCTURE FOR A TYPICAL CENTRAL WASTEWATER TREATMENT PLANT

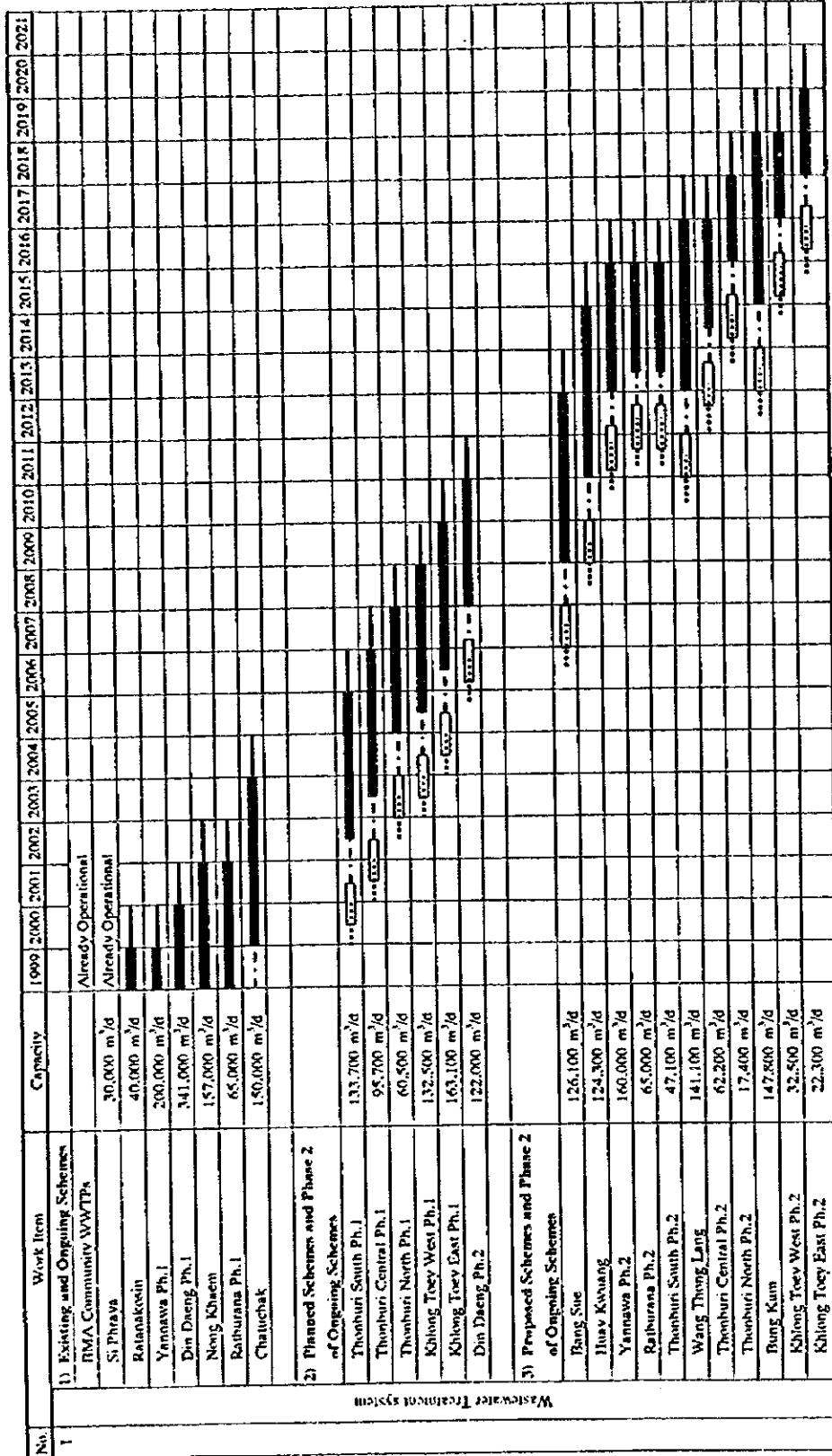


THE STUDY FOR MASTER PLAN ON  
SEWAGE SLUDGE TREATMENT / DISPOSAL AND  
RECLAIMED WASTEWATER REUSE IN BANGKOK

JAPAN INTERNATIONAL COOPERATION AGENCY

Figure 9.2.3.2  
TYPICAL ARRANGEMENT OF  
WASTEWATER FACILITIES INDICATING  
O&M FUNCTIONS

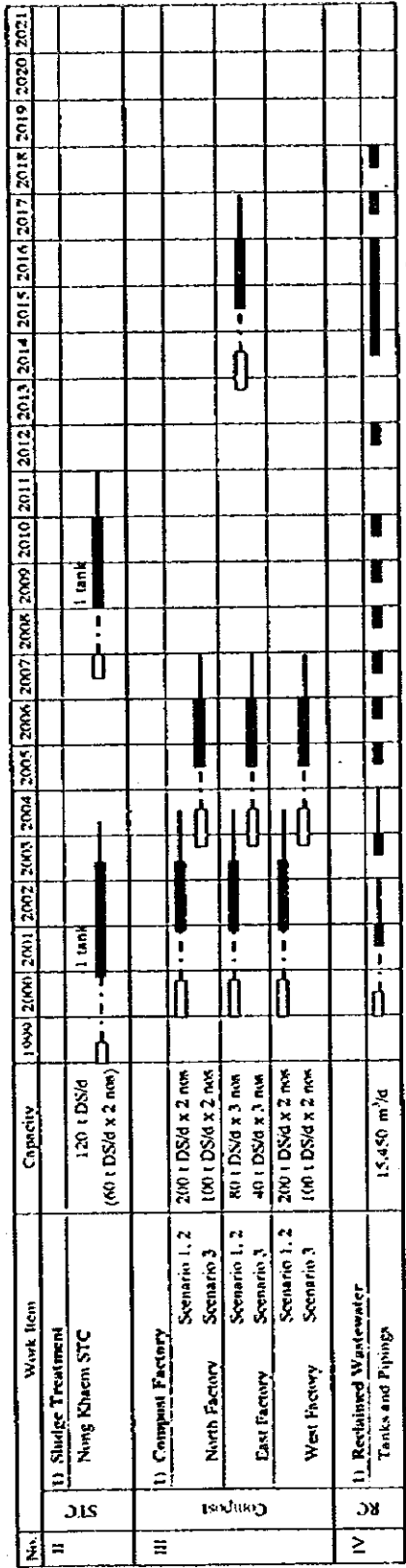




Legend:

- ..... : Survey
- - - - - : Bidding and Contracting
- ▭ : Detailed Design
- ▬ : Construction
- ▬ : First Year O&M

**Figure 10.2.1.1**  
**IMPLEMENTATION SCHEDULE (1/2)**  
**THE STUDY FOR MASTER PLAN ON**  
**SEWAGE SLUDGE TREATMENT / DISPOSAL AND**  
**RECLAIMED WASTEWATER REUSE IN BANGKOK**  
**JAPAN INTERNATIONAL COOPERATION AGENCY**



Legend:

- ..... : Survey
- - - - - : Bidding and Contracting
- : Detailed Design
- : Construction
- : First Year O&M

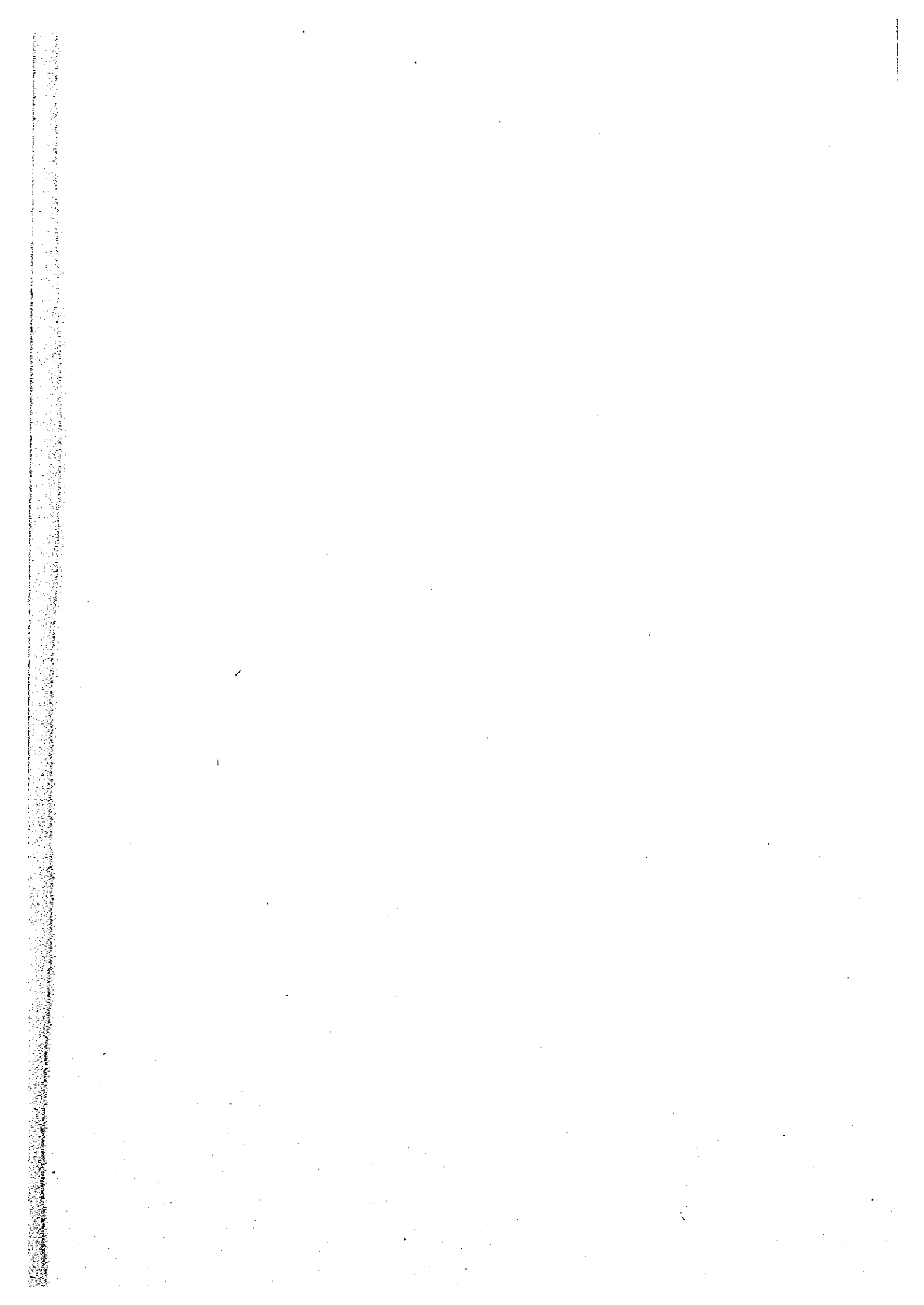
**THE STUDY FOR MASTER PLAN ON  
SEWAGE SLUDGE TREATMENT / DISPOSAL AND  
RECLAIMED WASTEWATER REUSE IN BANGKOK  
JAPAN INTERNATIONAL COOPERATION AGENCY**

**Figure 10.2.1.1  
IMPLEMENTATION SCHEDULE (2/2)**









1111