

LEGEND	
POINTS	
EP	ELECTRICAL POLE
TP	TELEPHONE POLE
BW	BENCH MARK
SYMBOLS	
	LOOSE STONE WALL
	BENCH MARK SYMBOL
	TREES
HATCH	
	BUILDING
	SHED

NOTE:  
1. SURVEY PERFORMED ON 07 MAY 1999



Rev	Date	Description	Dwg'd	Dem	Chk'd	App	Rev	Date	Description	Dwg'd	Dem	Chk'd	App	Rev	Date	Description	Dwg'd	Dem	Chk'd	App	Rev	Date	Description	

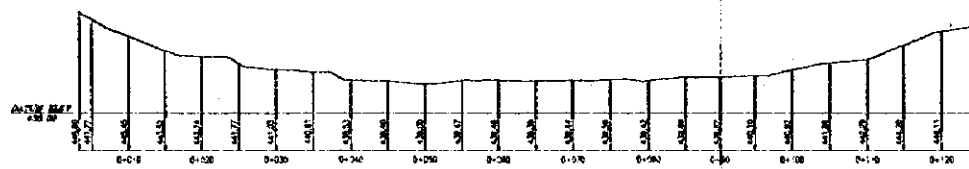
  
**مركز الهندسة والتخطيط**  
**CENTER FOR ENGINEERING AND PLANNING**

THE BASIC DESIGN STUDY ON THE PROJECT FOR CONSTRUCTION  
 OF SCHOOL FACILITIES FOR BASIC EDUCATION IN THE WEST BANK  
**SURVEY PLAN No.17 BANY ZAID**

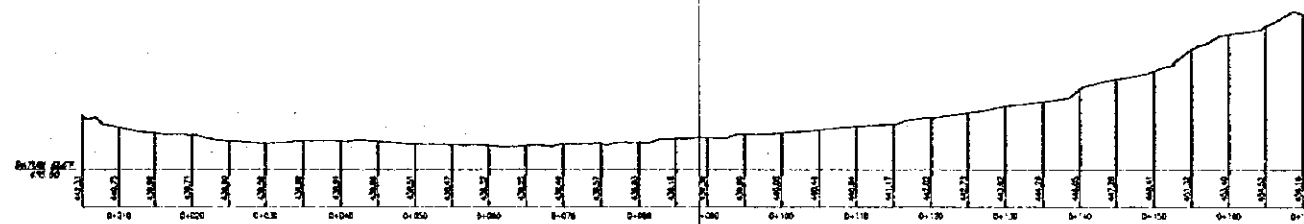
Scale: 1:400    Date: 5-MAY-1999    Drawn: JAF    CAD File Name: C:\JICA\17

Drawing No. **17-A**

SECTION A  
SCALE 1:20



SECTION B  
SCALE 1:20



Scale 1:20

Rev	Date	Description	Des'g	Des	Chk'd	App	Rev	Date	Description	Des'g	Des	Chk'd	App	Rev	Date	Description

**مركز الهندسة والتخطيط**

**CENTER FOR ENGINEERING AND PLANNING**

THE BASIC DESIGN STUDY ON THE PROJECT FOR CONSTRUCTION OF SCHOOL FACILITIES FOR BASIC EDUCATION IN THE WEST BANK  
**SECTIONS -- SITE No. 17**

Scale 1:400 Date 5-MAY-1999 Drawn JAF CAD File Name: C:\NCA\17

3P  
Revision Number  
P08 001  
31-May-99 10:05 AM  
Tel: +972 2 295655 Fax: +972 2 295654

Drawing No.  
**17-C**

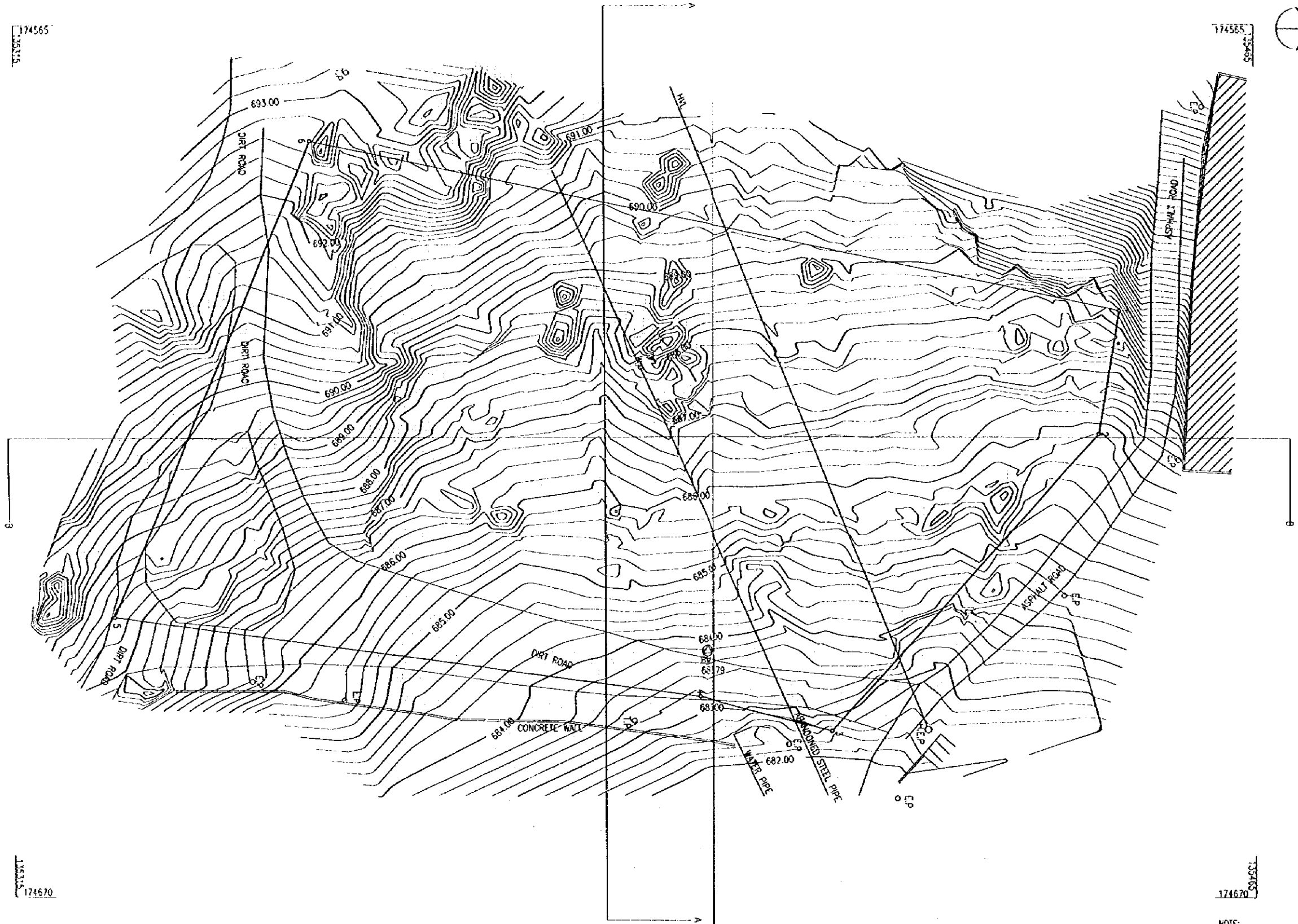
174565  
SHEET 5

174565  
SHEET 5



LEGEND

POINTS	
EP	ELECTRICAL POLE
TP	TELEPHONE POLE
BW	BENCH MARK
MH	MANHOLE
HVL	ELECTRICAL HIGH VOLTAGE LINE
H.E.P	HIGH VOLTAGE ELECTRICAL POLE
SYMBOLS	
	LOOSE STONE WALL
	BENCH MARK SYMBOL
	TREES
HATCH:	
	BUILDING
	SHED



174670

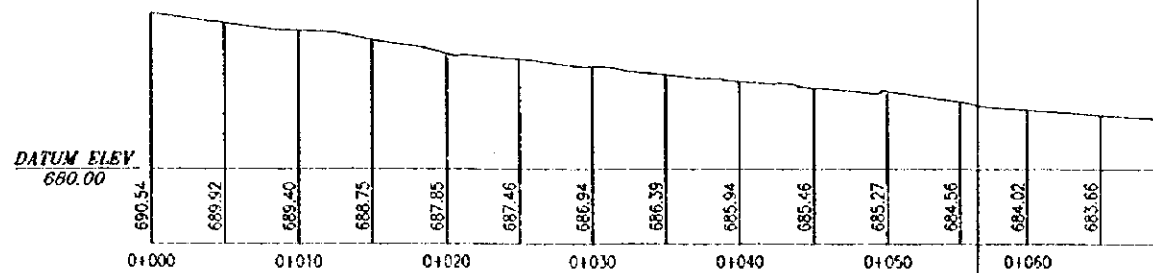
174670

NOTE:  
1. SURVEY PERFORMED ON 27 MAY 1993

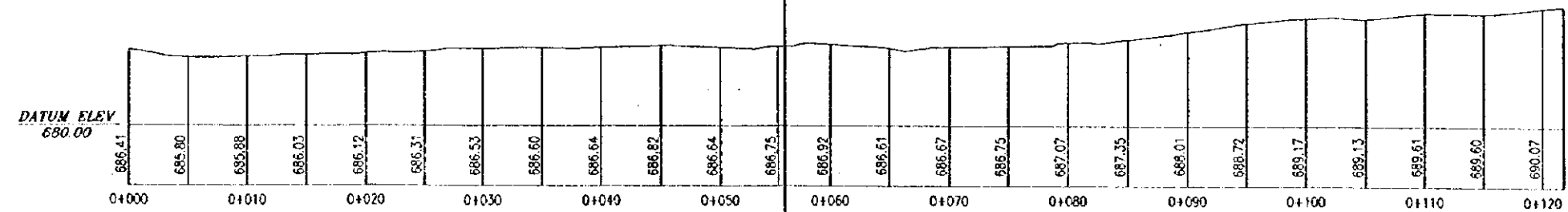


<p>مركز الهندسة والتخطيط CENTER FOR ENGINEERING AND PLANNING</p> <p>THE BASIC DESIGN STUDY ON THE PROJECT FOR CONSTRUCTION OF SCHOOL FACILITIES FOR BASIC EDUCATION IN THE WEST BANK</p> <p><b>SURVEY PLAN No. 17B ANATA</b></p>										<p>Scale: 1:200</p> <p>Date: 5-JUN-1993</p> <p>Drawn: JAF</p> <p>Sheet No: C:\ACA\N17</p>	<p>17B-A</p>
Rev	Date	Description	Rev	Date	Description	Rev	Date	Description	Rev	Date	Description

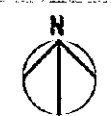
SECTION A-A  
SCALE 1:200



SECTION B-B  
SCALE 1:200



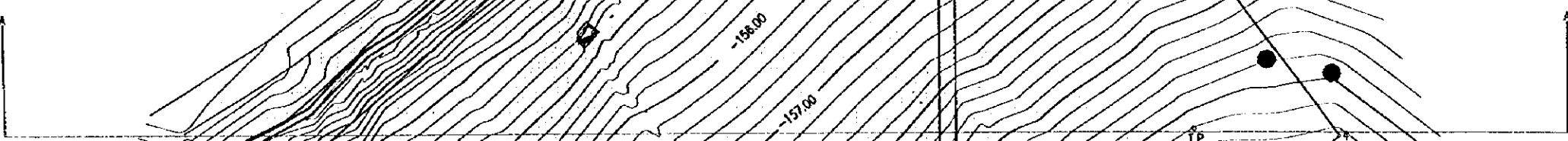
<p style="text-align: center;"><b>مركز الهندسة والتخطيط</b>  <b>CENTER FOR ENGINEERING AND PLANNING</b></p> <p style="text-align: center;">THE BASIC DESIGN STUDY ON THE PROJECT FOR CONSTRUCTION          OF SCHOOL FACILITIES FOR BASIC EDUCATION IN THE WEST BANK</p> <p style="text-align: center;"><b>SECTIONS - SITE No.17B</b></p>										<p>Scale 1:200</p> <p>Date 5-JUN-1999</p> <p>Drawn JAF</p> <p>CAD File Name C:\JCA\15</p>		<p>Sheet No. 17B-C</p>	
---	--	--	--	--	--	--	--	--	--	---	--	------------------------	--



LEGEND	
POINTS	
EP	ELECTRICAL POLE
TP	TELEPHONE POLE
BM	BENCH MARK
MH	MANHOLE
SYMBOLS	
	LOOSE STONE WALL
	BENCH MARK SYMBOL
	TREES
HATCH	
	BUILDING
	SHED

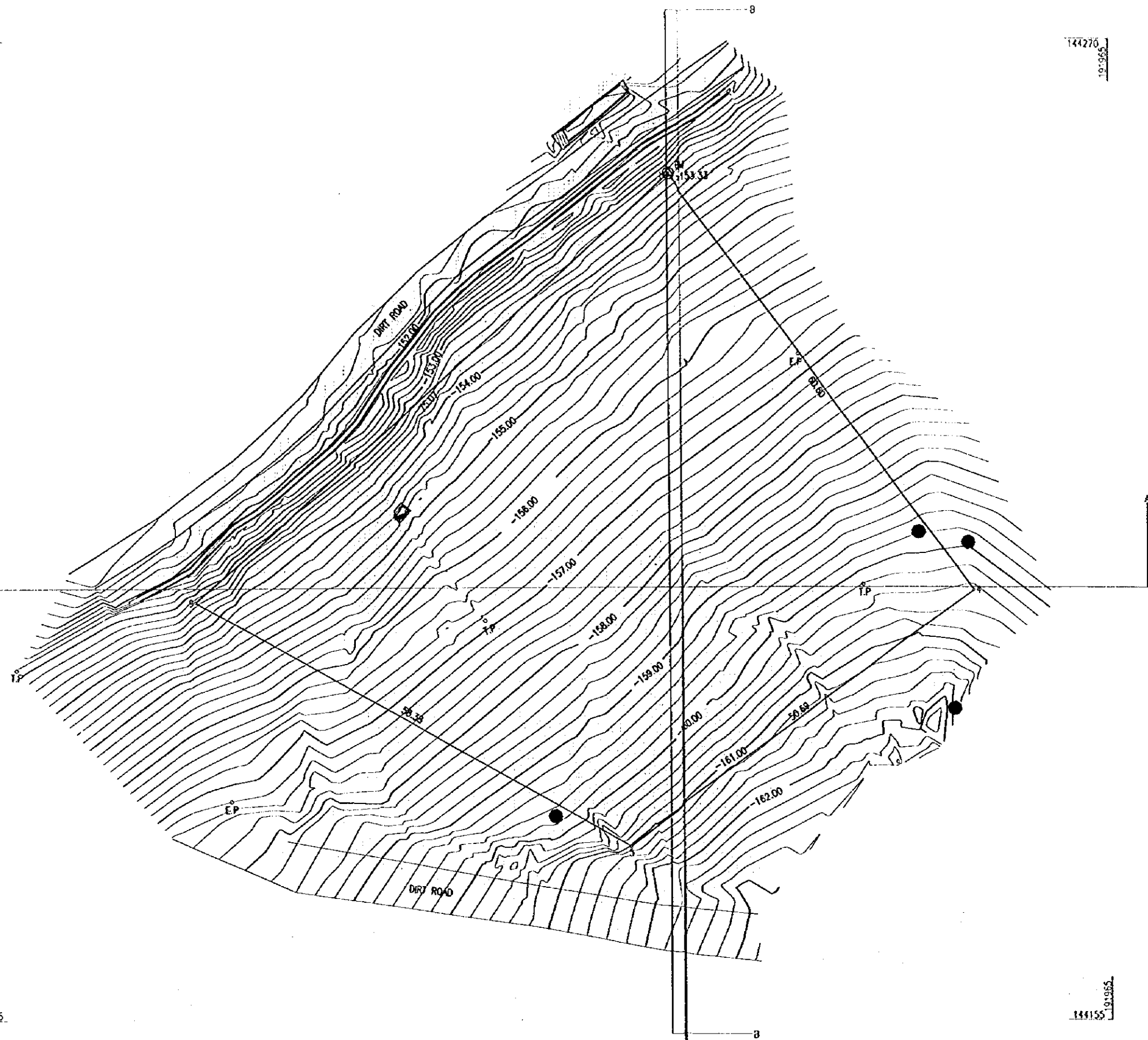
144270  
144155

144270  
144155



144155  
144270

144155  
144270



NOTE:  
1. SURVEY PERFORMED ON 5 MAY 1999

5m 0m METRIC 25m

Rev	Date	Description	Drawn	Check	App	Rev	Date	Description	Drawn	Check	App	Rev	Date	Description	Drawn	Check	App	Scale	Date	Drawn	App	Scale	Date	Drawn	App
																		1:200	5-MAY-1999	JAF					

**Center for Engineering and Planning**

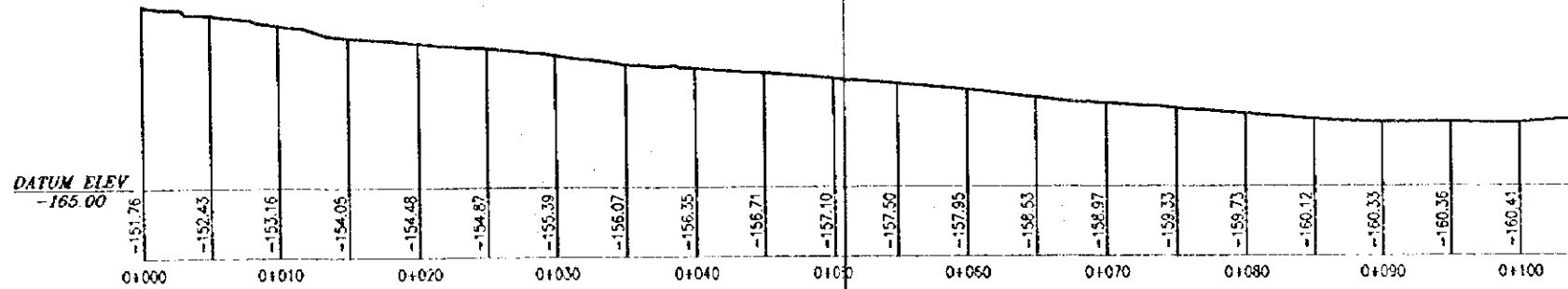
THE BASIC DESIGN STUDY ON THE PROJECT FOR CONSTRUCTION OF SCHOOL FACILITIES FOR BASIC EDUCATION IN THE WEST BANK

**SURVEY PLAN No. 18 AL-NWA'MEH**

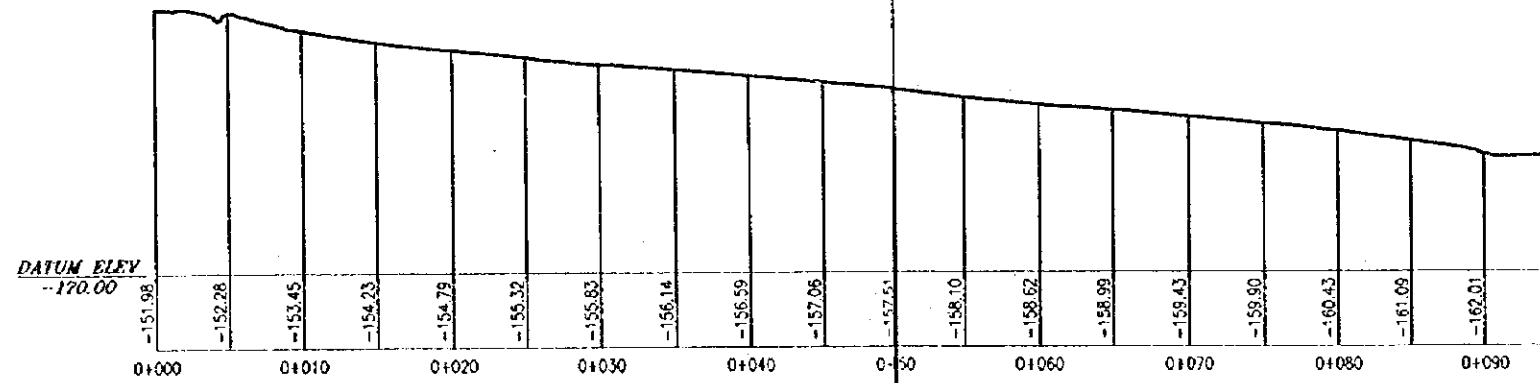
Drawing No. 18-A

C:\JCA\18

SECTION A-A  
SCALE 1:200



SECTION B-B  
SCALE 1:200



5m 0m METRIC 25m

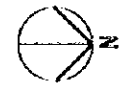
Rev	Date	Description	Eng'g	Des	Ch'g	App	Rev	Date	Description	Eng'g	Des	Ch'g	App	Rev	Date	Description	Eng'g	Des	Ch'g	App																				

Center for Engineering and Planning

THE BASIC DESIGN STUDY ON THE PROJECT FOR CONSTRUCTION OF SCHOOL FACILITIES FOR BASIC EDUCATION IN THE WEST BANK  
SECTIONS - SITE No.18

Scale 1:200  
Date 5-MAY-1999  
Drawn JAF  
C.A./CA 18

18-C



LEGEND	
POINTS	
EP	ELECTRICAL POLE
TP	TELEPHONE POLE
BV	BENCH MARK
MH	MANHOLE
HVL	ELECTRICAL HIGH VOLTAGE LINE
H.E.P.	HIGH VOLTAGE ELECTRICAL POLE
SYMBOLS	
	LOOSE STONE WALL
	BENCH MARK SYMBOL
	TREES
MATCH:	
	BUILDING
	SHED

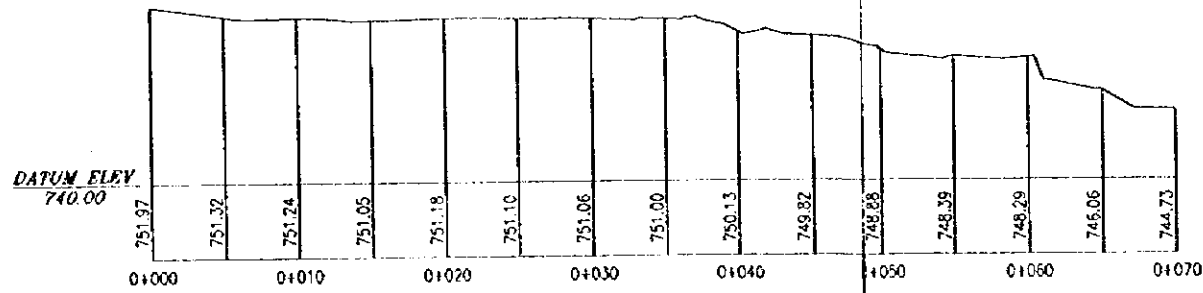


NOTE:  
1. SURVEY PERFORMED ON 28 MAY 1999

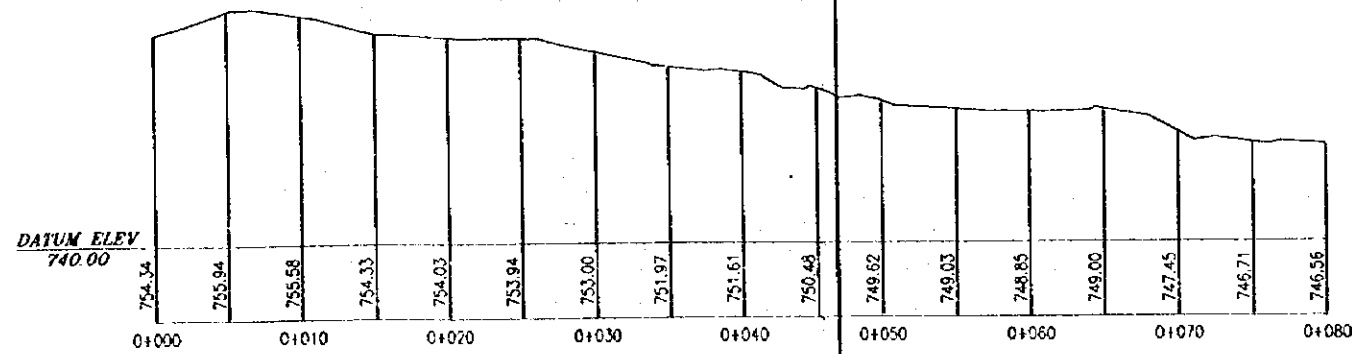


<p style="text-align: center;"><b>مركز الهندسة والتخطيط</b>  <b>CENTER FOR ENGINEERING AND PLANNING</b></p> <p style="text-align: center;">THE BASIC DESIGN STUDY ON THE PROJECT FOR CONSTRUCTION          OF SCHOOL FACILITIES FOR BASIC EDUCATION IN THE WEST BANK  <b>SURVEY PLAN No. 19B AL-MAHO</b></p>										<p>Scale: 1:200</p>		<p>Date: 5-JUN-1999</p>		<p>Drawn: JAF</p>		<p>SAD File Name: C:\NCA\N13</p>		<p>Drawing No. 19B-A</p>	
Rev	Date	Description	Des'g'd	Chk'd	App	Rev	Date	Description	Des'g'd	Chk'd	App	Rev	Date	Description	Des'g'd	Chk'd	App		

SECTION A-A  
SCALE 1:200



SECTION B-B  
SCALE 1:200

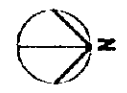


										<p style="text-align: center;"><b>مركز الهندسة والتخطيط</b>  <b>CENTER FOR ENGINEERING AND PLANNING</b></p> <p style="text-align: center;">THE BASIC DESIGN STUDY ON THE PROJECT FOR CONSTRUCTION          OF SCHOOL FACILITIES FOR BASIC EDUCATION IN THE WEST BANK</p> <p style="text-align: center;"><b>SECTIONS - SITE No. 19B</b></p>										<p>19B          Section, Profile          Date: 01/07/99          Drawn: Eng. JAF          Checked: Eng. JAF          Scale: 1:200</p> <p style="text-align: right;">19B-C</p>										
Rev.	Date	Description	Design	Drawn	Checked	Appr.	Rev.	Date	Description	Design	Drawn	Checked	Appr.	Rev.	Date	Description	Design	Drawn	Checked	Appr.	Scale	Date	Drawn	Checked	Appr.	Scale	Date	Drawn	Checked	Appr.

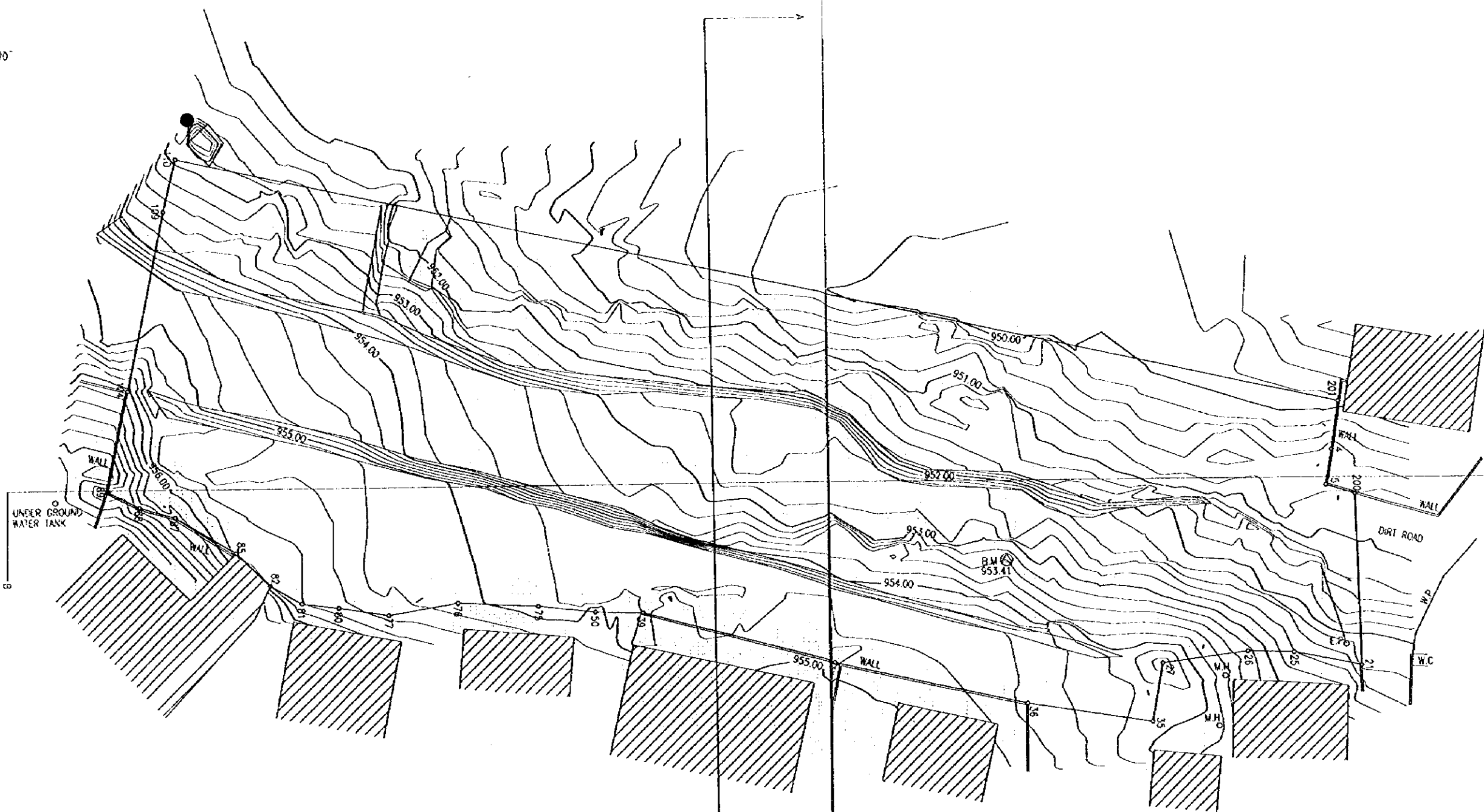


162870  
162950

162870  
162950



LEGEND	
POINTS	
EP	ELECTRICAL POLE
TP	TELEPHONE POLE
BM	BENCH MARK
MH	MANHOLE
HVL	ELECTRICAL HIGH VOLTAGE LINE
H.E.P.	HIGH VOLTAGE ELECTRICAL POLE
SYMBOLS	
	LOOSE STONE WALL
	BENCH MARK SYMBOL
	TREES
HATCH:	
	BUILDING
	SHED



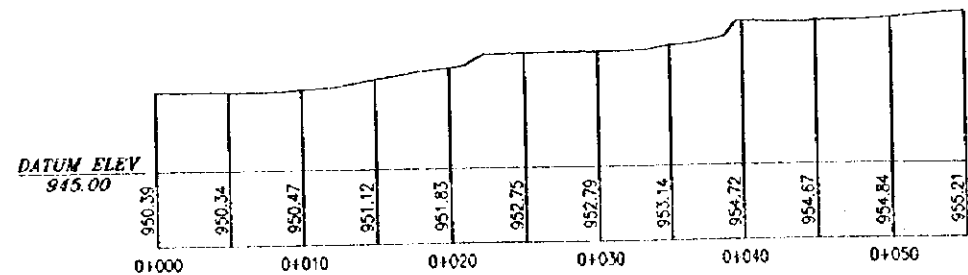
UNDER GROUND WATER TANK

NOTE:  
1. SURVEY PERFORMED ON 30 MAY 1999

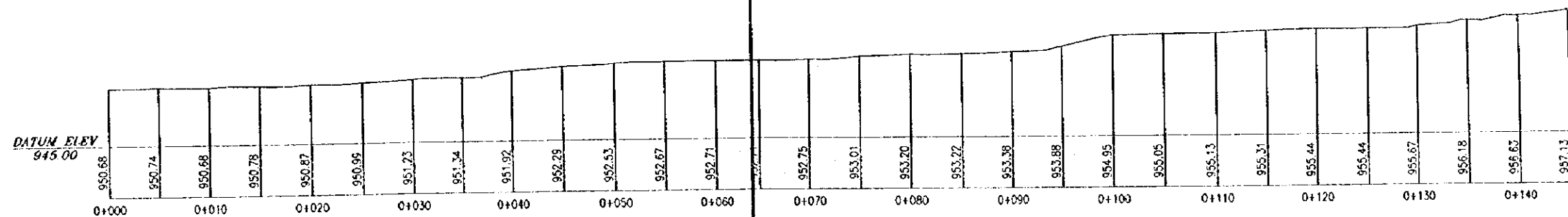


<p style="text-align: center;"><b>مركز الهندسة والتخطيط</b>  <b>CENTER FOR ENGINEERING AND PLANNING</b>          THE BASIC DESIGN STUDY ON THE PROJECT FOR CONSTRUCTION OF SCHOOL FACILITIES FOR BASIC EDUCATION IN THE WEST BANK  <b>SURVEY PLAN No. 208 SA'IR</b></p>															<p>27 Roshan, Palestine P.O. Box 1 Tel: +972 2 252055 Fax: +972 2 252054</p>																																	
<table border="1" style="width: 100%; border-collapse: collapse;"> <thead> <tr> <th>Rev.</th> <th>Date</th> <th>Description</th> <th>App.</th> <th>App.</th> <th>App.</th> <th>App.</th> <th>App.</th> <th>App.</th> <th>App.</th> <th>App.</th> <th>App.</th> <th>App.</th> <th>App.</th> <th>App.</th> </tr> </thead> <tbody> <tr> <td> </td> <td> </td> <td> </td> <td> </td> <td> </td> <td> </td> <td> </td> <td> </td> <td> </td> <td> </td> <td> </td> <td> </td> <td> </td> <td> </td> <td> </td> </tr> </tbody> </table>															Rev.	Date	Description	App.	App.	App.	App.	App.	App.	App.	App.	App.	App.	App.	App.																<p>Scale: 1:200 Date: 5-5/99-1999 Drawn: JAF CAD File Name: C:\CA\1\6</p>		<p>208-A</p>	
Rev.	Date	Description	App.	App.	App.	App.	App.	App.	App.	App.	App.	App.	App.	App.																																		

SECTION A-A  
SCALE 1:200

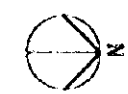


SECTION B-B  
SCALE 1:200

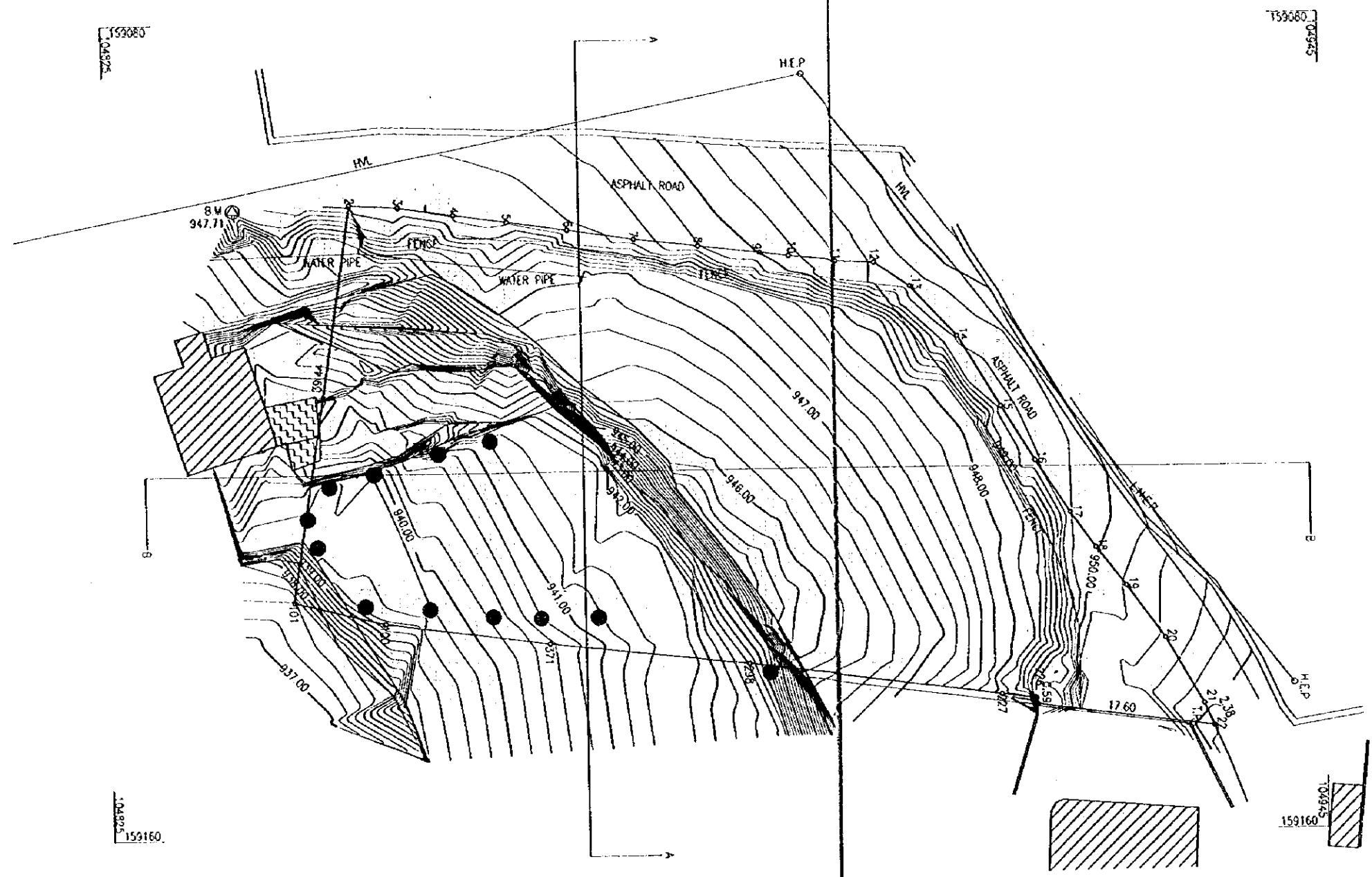


5m 0m METRIC 25m

										<p>مركز الهندسة والتخطيط CENTER FOR ENGINEERING AND PLANNING</p>				<p>22 Roshan, Palestine P.O. Box 301 Tel: +972 8 742225 Fax: +972 8 742224</p>			
										<p>THE BASIC DESIGN STUDY ON THE PROJECT FOR CONSTRUCTION OF SCHOOL FACILITIES FOR BASIC EDUCATION IN THE WEST BANK</p>				<p>Drawing No.</p>			
										<p>SECTIONS - SITE No. 20B</p>				<p>20B-C</p>			
										Scale	1:200	Date	5-JUN-1999	Drawn	JAF	CD File Name	E:\ACA\16
No.	Date	Description	Des'g	Des	Des'g	App	Rev	Date	Description	Des'g	Des	Des'g	App	Rev	Date	Description	



LEGEND	
POINTS	
EP	ELECTRICAL POLE
TP	TELEPHONE POLE
BM	BENCH MARK
MH	MANHOLE
HVA	ELECTRICAL HIGH VOLTAGE LINE
SYMBOLS	
	LOOSE STONE WALL
	BENCH MARK SYMBOL
	TREES
HATCH	
	BUILDING
	SHED



159080  
159080

159080  
159080

159160  
159160

159160  
159160

NOTE:  
1. SURVEY PERFORMED ON 25 MAY 1999

5m 0m METRIC 25m

Rev	Date	Description	Des'gn	Dim	Ch'k'd	App	Rev	Date	Description	Des'gn	Dim	Ch'k'd	App	Rev	Date	Description	Des'gn	Dim	Ch'k'd	App	Rev	Date	Description	

مركز الهندسة والتخطيط  
CENTER FOR ENGINEERING AND PLANNING

THE BASIC DESIGN STUDY ON THE PROJECT FOR CONSTRUCTION  
OF SCHOOL FACILITIES FOR BASIC EDUCATION IN THE WEST BANK

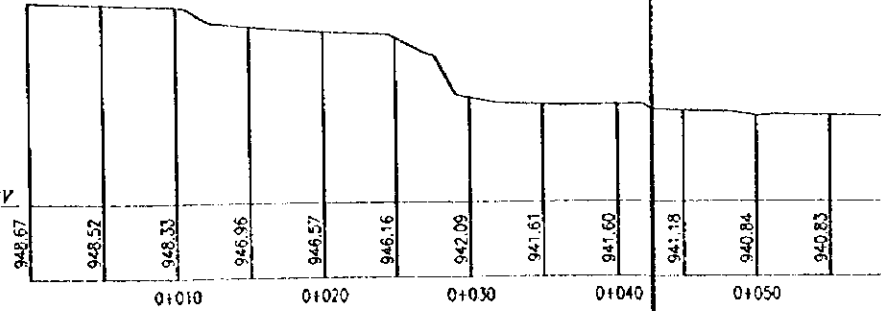
SURVEY PLAN No.21B AL-MUQATA'EH

21B  
Karama, Palestine  
P.O. Box  
1 - Jaffa - Ramallah  
Tel: +972 2 252222 Fax: +972 2 252222

Drawing No.  
**21B-A**

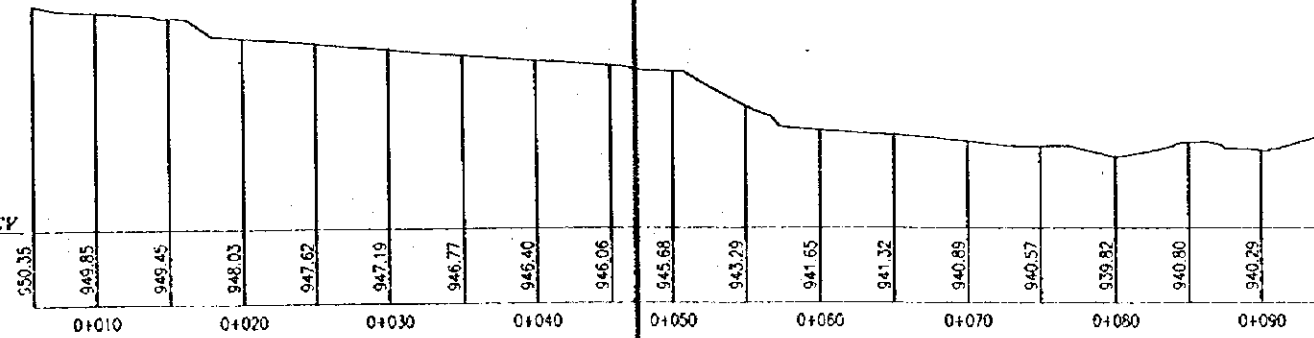
SECTION A-A  
SCALE 1:200

DATUM ELEV  
935.00



SECTION B-B  
SCALE 1:200

DATUM ELEV  
935.00



Rev	Date	Description	Des'g'd	Den	Chk'd	App	Rev	Date	Description	Des'g'd	Den	Chk'd	App	Rev	Date	Description	Des'g'd	Den	Chk'd	App

**مركز الهندسة والتخطيط**  
**CENTER FOR ENGINEERING AND PLANNING**

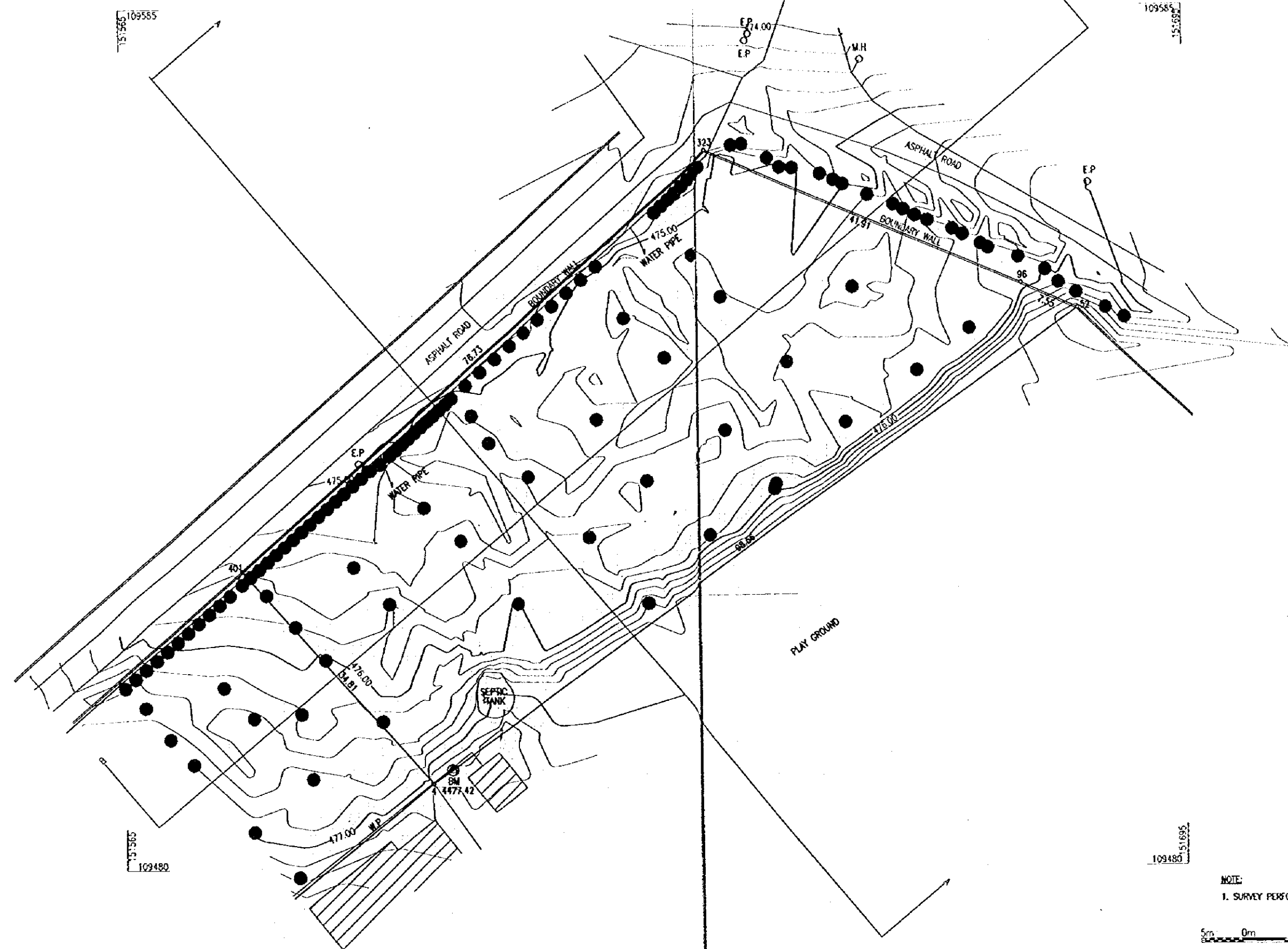
THE BASIC DESIGN STUDY ON THE PROJECT FOR CONSTRUCTION  
 OF SCHOOL FACILITIES FOR BASIC EDUCATION IN THE WEST BANK

**SECTIONS - SITE No.218**

Scale	1:200	Date	5-JUN-1999	Drawn	JAF	CAD File Name	C:\JCA\21
Sheet No.	218-C						



LEGEND	
POINTS	
EP	ELECTRICAL POLE
TP	TELEPHONE POLE
BM	BENCH MARK
MH	MANHOLE
SYMBOLS	
	LOOSE STONE WALL
	BENCH MARK SYMBOL
	TREES
HATCH:	
	BUILDING
	SHED

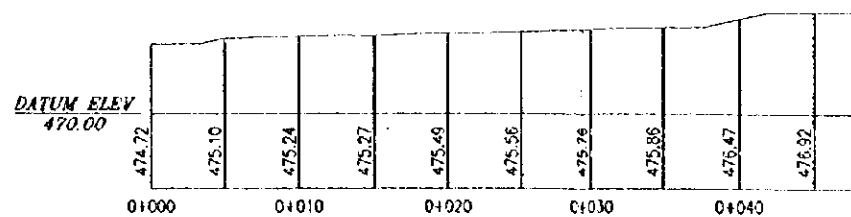


NOTE:  
1. SURVEY PERFORMED ON 3 MAY 1999

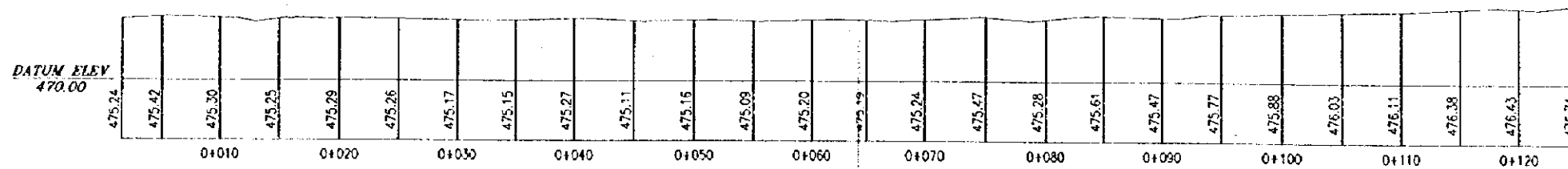


										<p style="text-align: center;"><b>مركز الهندسة والتخطيط</b>  <b>CENTER FOR ENGINEERING AND PLANNING</b></p> <p style="text-align: center;">THE BASIC DESIGN STUDY ON THE PROJECT FOR CONSTRUCTION          OF SCHOOL FACILITIES FOR BASIC EDUCATION IN THE WEST BANK  <b>SURVEY PLAN No.228 TARQOMIA</b></p>										<p>EP Electrical Pole TP Telephone Pole BM Bench Mark MH Manhole</p> <p>Drawing No. <b>228-A</b></p>									
Rev.	Date	Description	Eng.'s	Enr.	Chk.'s	App.	Rev.	Date	Description	Eng.'s	Enr.	Chk.'s	App.	Rev.	Date	Description	Scale	Date	Drawn	CAD File Name									
																	1:200	5-MAY-1999	JAF	C:\NCA\22									

SECTION A-A  
SCALE 1:200



SECTION B-B  
SCALE 1:200

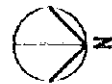


Scale: 5m 0m 25m METRIC

Rev	Date	Description	Design	Drawn	Checked	Appr	Rev	Date	Description	Design	Drawn	Checked	Appr	Rev	Date	Description	Scale	Date	Drawn	Appr	File Name
																	1:200	5-MAY-1999	JAF		C:\JCA\22

مركز الهندسة والتخطيط  
**CENTER FOR ENGINEERING AND PLANNING**  
 THE BASIC DESIGN STUDY ON THE PROJECT FOR CONSTRUCTION  
 OF SCHOOL FACILITIES FOR BASIC EDUCATION IN THE WEST BANK  
**SECTIONS - SITE No.22B TARGOMIA**

22B  
 Targomia, Palestine  
 P.O. Box 201  
 e-mail: cep@cep.com  
 Tel: +972 8 2952455 Fax: +972 8 2952454  
 Drawing No. **22B-C**



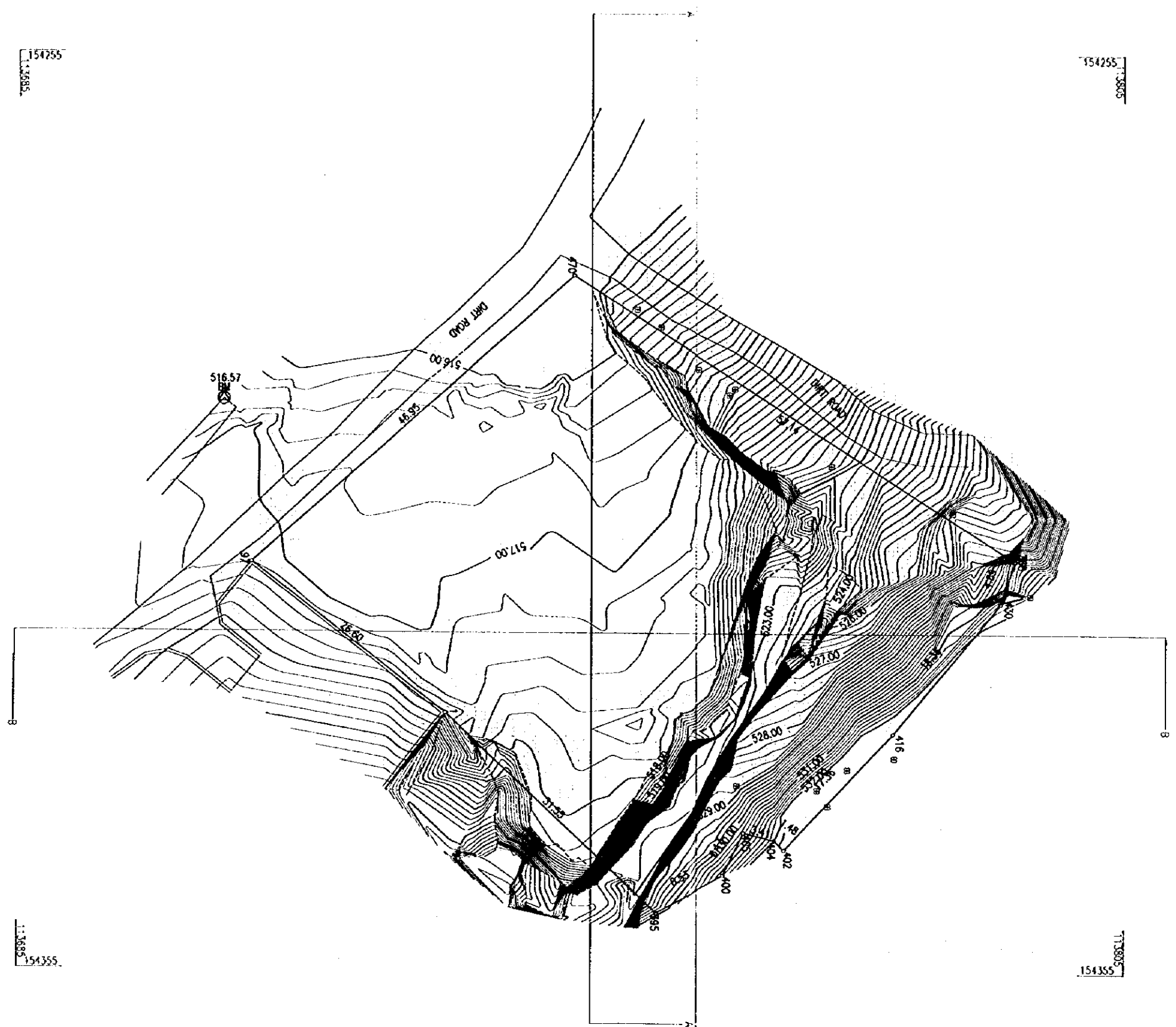
LEGEND	
POINTS	
EP	ELECTRICAL POLE
TP	TELEPHONE POLE
BM	BENCH MARK
MH	MANHOLE
SYMBOLS	
	LOOSE STONE WALL
	BENCH MARK SYMBOL
	TREES
HATCH:	
	BUILDING
	SHED

154255  
50800

154255  
50800

154355  
50800


154355  
50800



NOTE:  
1. SURVEY PERFORMED ON 6 MAY 1999



Rev	Date	Description	Des'g	Den	Ch'g	App	Rev	Date	Description	Des'g	Den	Ch'g	App	Rev	Date	Description

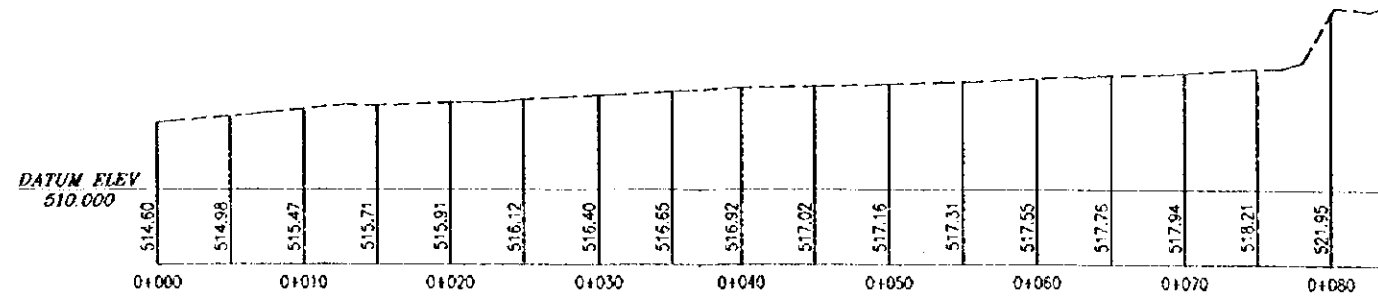
  
**مركز التخطيط والهندسة**  
 CENTER FOR ENGINEERING AND PLANNING  
 THE BASIC DESIGN STUDY ON THE PROJECT FOR CONSTRUCTION  
 OF SCHOOL FACILITIES FOR BASIC EDUCATION IN THE WEST BANK  
**SURVEY PLAN No.23 KHARAS**

Scale: 1:200    Date: 5-MAY-1999    Drawn: JAF    CAD File Name: C:\KCA\23

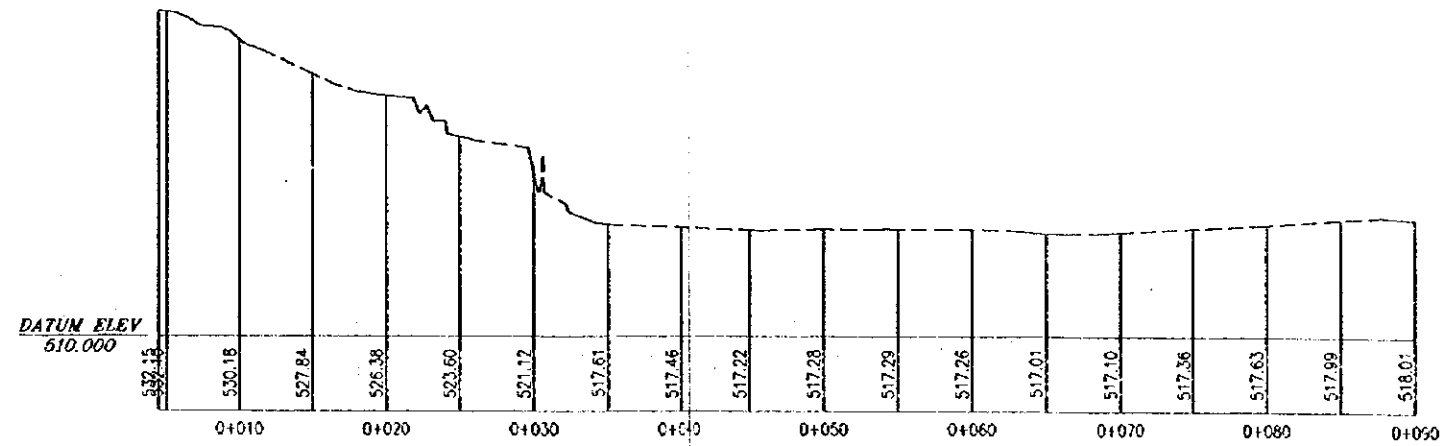
23  
 Kh. Kh. Kh.  
 23-301  
 e-mail: cep@kh.net  
 Tel: 972 2 295825 Fax: 972 2 295824  
 Drawing No.

23-A


SECTION A-A  
SCALE 1:200



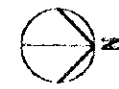
SECTION B-B  
SCALE 1:200



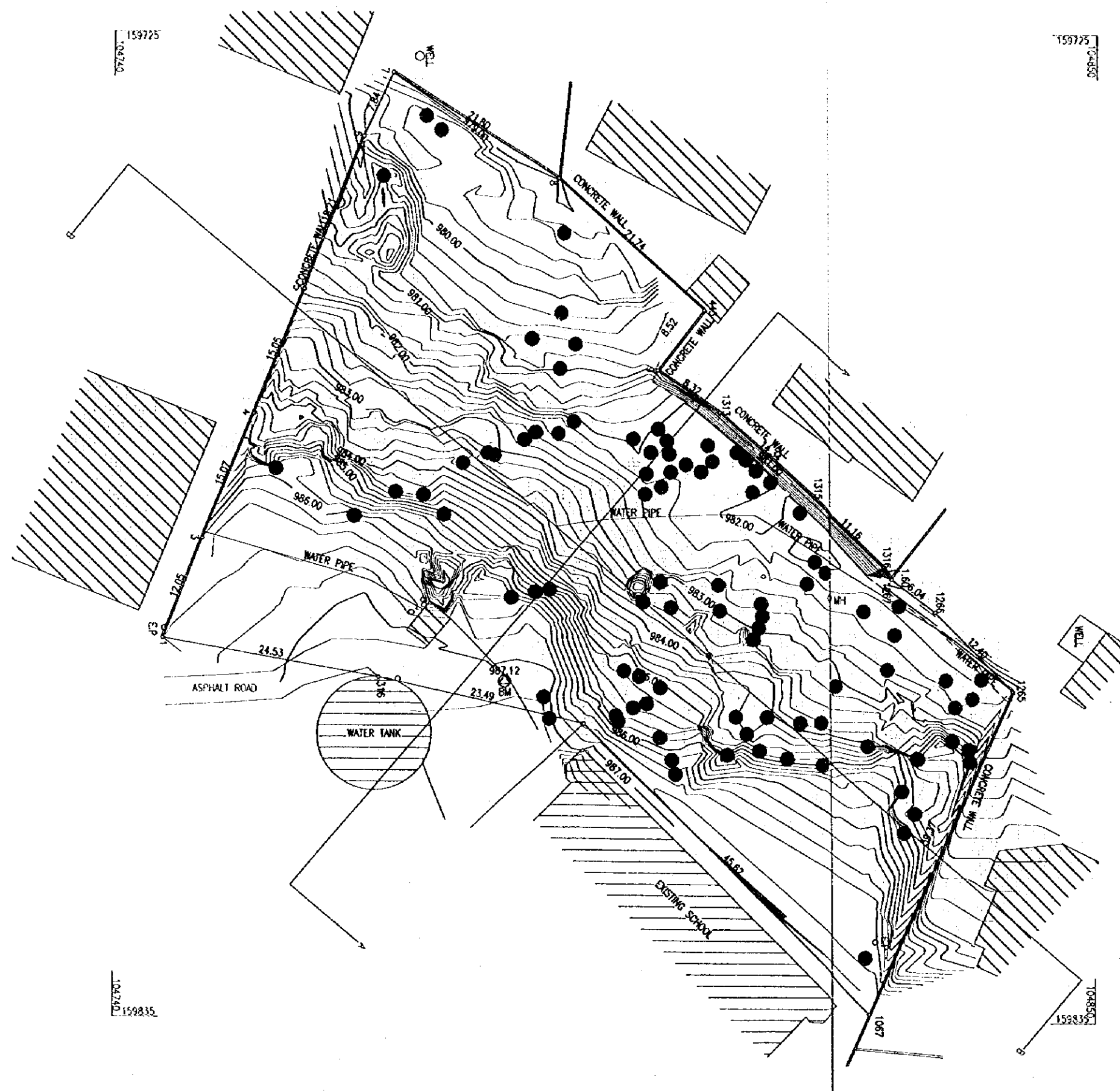
5m 0m 25m METRIC

										<p style="text-align: center;">   <b>CENTER FOR ENGINEERING AND PLANNING</b>                  THE BASIC DESIGN STUDY ON THE PROJECT FOR CONSTRUCTION                  OF SCHOOL FACILITIES FOR BASIC EDUCATION IN THE WEST BANK  <b>SECTIONS - SITE No.23</b> </p>										<p>                 CEP                  Ramallah, Palestine                  P.O. Box 231                  Tel. +972 2 285125 Fax. +972 2 285124                  Drawing No.             </p>									
										<p>                 Scale 1:200 Date 5-MAY-1999 Drawn JAF CAD File Name C:\ACA\23             </p>										<p>23-C</p>									
Rev	Date	Description	Des'g	Des	Ch'g	App	Rev	Date	Description	Des'g	Des	Ch'g	App	Rev	Date	Description	Des'g	Des	Ch'g	App	Rev	Date	Description						





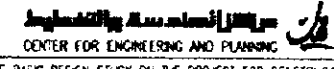
LEGEND	
<b>POINTS</b>	
EP	ELECTRICAL POLE
TP	TELEPHONE POLE
BW	BENCH MARK
MH	MANHOLE
<b>SYMBOLS</b>	
	LOOSE STONE WALL
	BENCH MARK SYMBOL
	TREES
<b>HATCH:</b>	
	BUILDING
	SHED



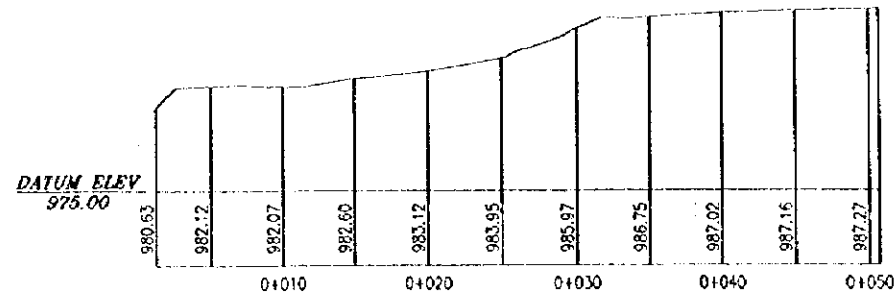
NOTE:  
 1. SURVEY PERFORMED ON 15 MAY 1999

5m 0m METRIC 25m

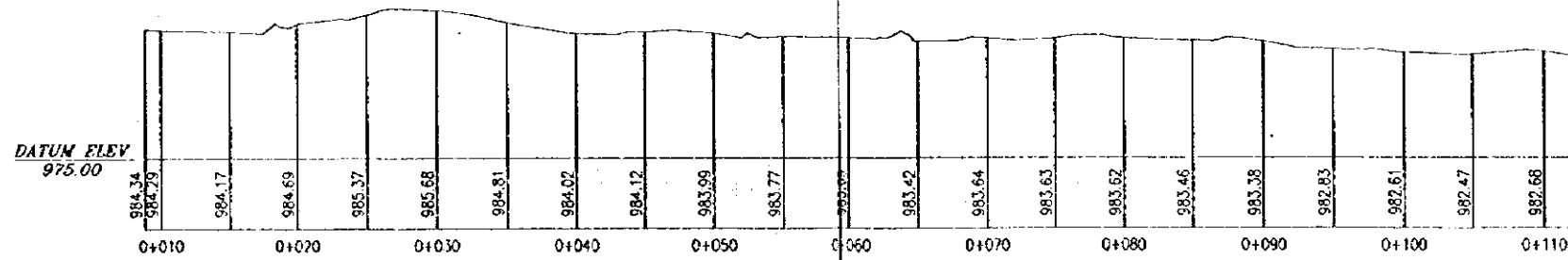
Rev	Date	Description	Des'g'd	Dev.	Chk'd	App.	Rev.	Date	Description	Des'g'd	Dev.	Chk'd	App.	Rev.	Date	Description

  
 CENTER FOR ENGINEERING AND PLANNING  
 THE BASIC DESIGN STUDY ON THE PROJECT FOR CONSTRUCTION  
 OF SCHOOL FACILITIES FOR BASIC EDUCATION IN THE WEST BANK  
 SURVEY PLAN No.24 HAPAEI AL-REYAH  
 Scale: 1:200 Date: 5-MAY-1999 Drawn: JAF CAD File Name: C:\CA\24  
 Drawing No: 24-A

SECTION A-A  
SCALE 1:200



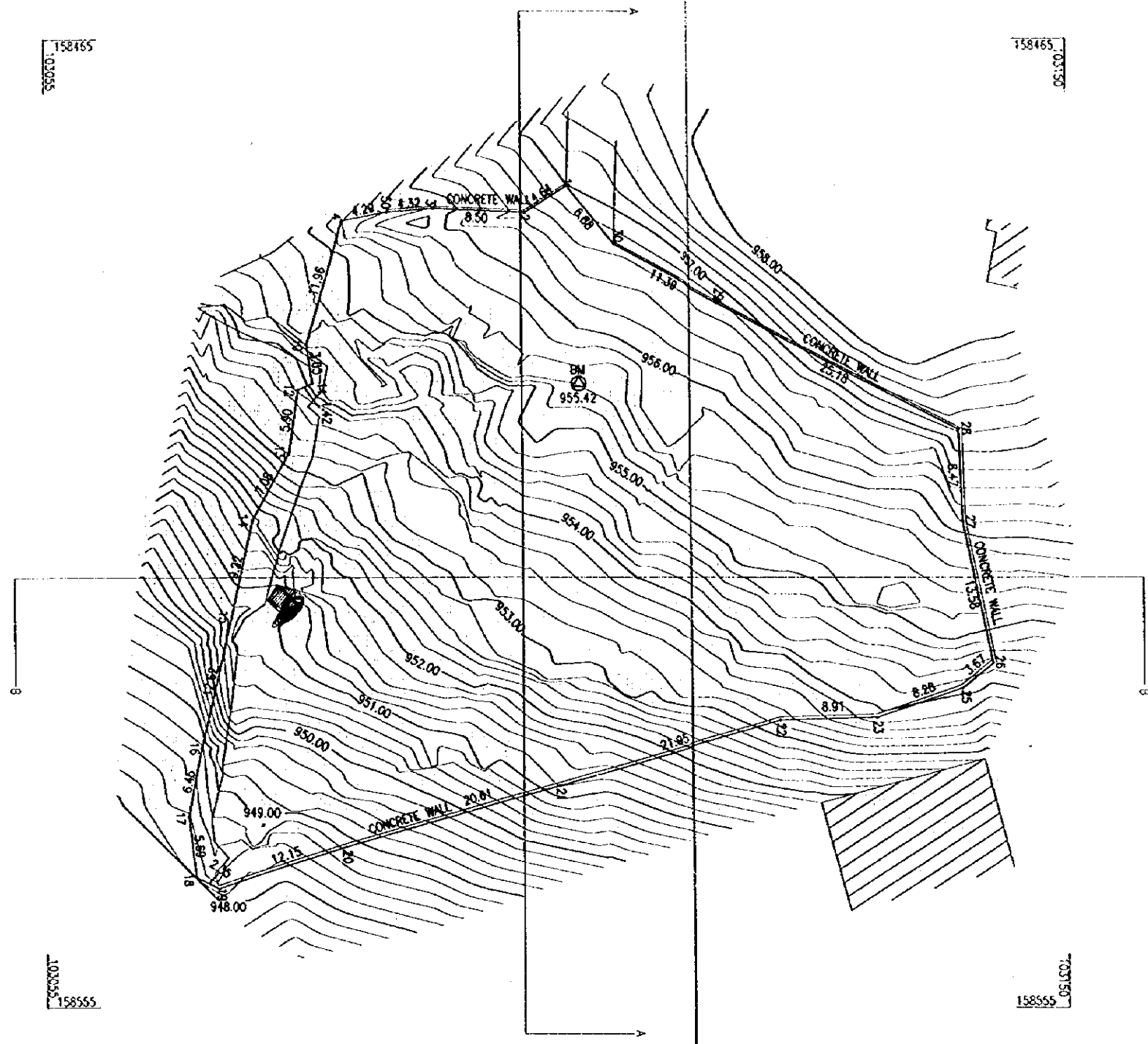
SECTION B-B  
SCALE 1:200



										<p style="text-align: center;"><b>مركز الهندسة والتخطيط</b>  <b>CENTER FOR ENGINEERING AND PLANNING</b></p> <p style="text-align: center;">THE BASIC DESIGN STUDY ON THE PROJECT FOR CONSTRUCTION          OF SCHOOL FACILITIES FOR BASIC EDUCATION IN THE WEST BANK</p> <p style="text-align: center;"><b>SECTIONS - SITE No.24</b></p>										CIP Amman, Palestine P.O. Box 301 e-mail: cep@yandex.com Tel: +972 2 225255 Fax: +972 2 225254						
																				Drawing No.						
																				24-C						
Rev.	Date	Description	Des'g	Des	Ch'g's	App	Rev.	Date	Description	Des'g	Des	Ch'g's	App	Rev.	Date	Description	Des'g	Des	Ch'g's	App	Scale	Date	Drawn	Check	Scale	Date
																					1:200	5-MAY-1999	JAF		C:\ICA\24	




LEGEND	
POINTS	
EP	ELECTRICAL POLE
TP	TELEPHONE POLE
BW	BENCH MARK
MH	MANHOLE
SYMBOLS	
	LOOSE STONE WALL
	BENCH MARK SYMBOL
	TREES
HATCH:	
	BUILDING
	SHED



NOTE:  
1. SURVEY PERFORMED ON 8 MAY 1999



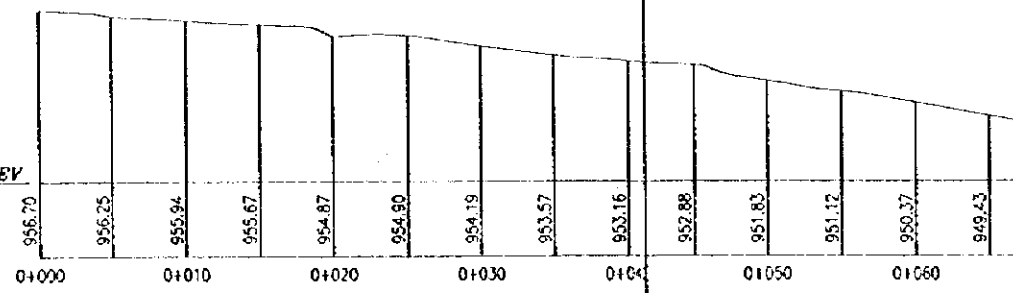
Rev.	Date	Description	Des'g'd	Chk'd	App'd	Rev.	Date	Description	Des'g'd	Chk'd	App'd	Rev.	Date	Description	Des'g'd	Chk'd	App'd

  
**مركز للهندسة والتخطيط**  
**CENTER FOR ENGINEERING AND PLANNING**  
 THE BASIC DESIGN STUDY ON THE PROJECT FOR CONSTRUCTION  
 OF SCHOOL FACILITIES FOR BASIC EDUCATION IN THE WEST BANK  
**SURVEY PLAN No.25B ABU-RUMMAN**  
 Scale 1:200 Date 5-MAY-1999 Drawn JAF CAD File Name C:\NCA\25

EP Electrical Pole  
 TP Telephone Pole  
 BW Bench Mark  
 MH Manhole  
 Drawing No. 258-A

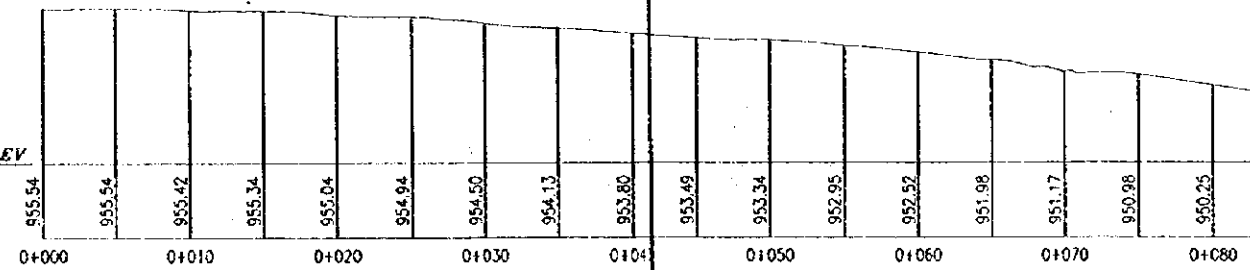
SECTION A-A  
SCALE 1:200

DATUM ELEV  
945.00



SECTION B-B  
SCALE 1:200

DATUM ELEV  
945.00



Rev.	Date	Description	Des'g'd	Dem.	Ch'k'd	App.	Rev.	Date	Description	Des'g'd	Dem.	Ch'k'd	App.	Rev.	Date	Description	Des'g'd	Dem.	Ch'k'd	App.	Scale	Date	Drawn	CD File Name
																					1:200	5-MAY-1999	JAF	C:\MCA\25

مركز الهندسة والتخطيط  
CENTER FOR ENGINEERING AND PLANNING  
THE BASIC DESIGN STUDY ON THE PROJECT FOR CONSTRUCTION  
OF SCHOOL FACILITIES FOR BASIC EDUCATION IN THE WEST BANK  
SECTIONS - SITE No.25B

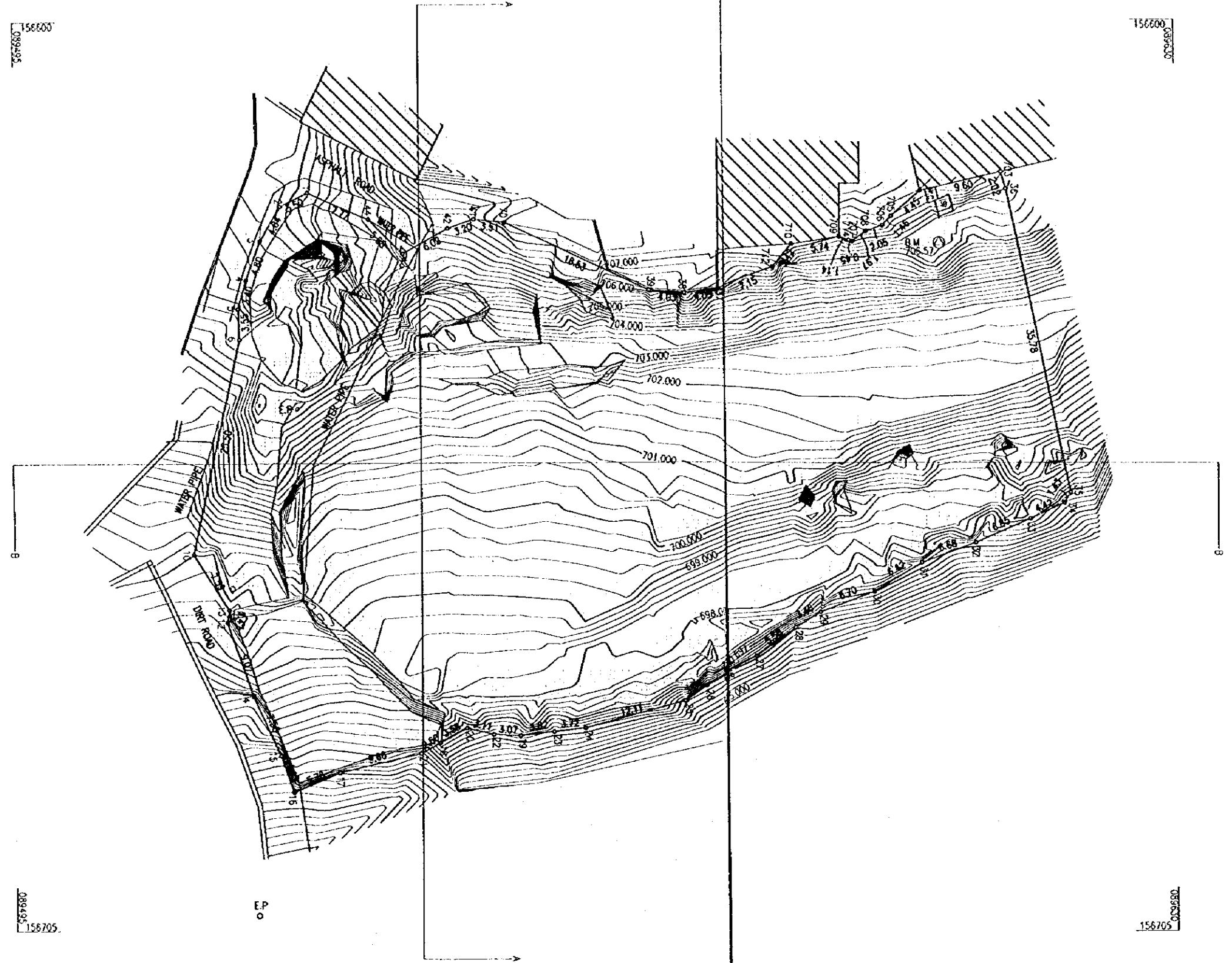
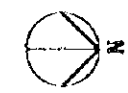
25B  
Revision: 04/09/99  
P08.301  
E. Moh'd. J. Jafar  
Tel: +972 7 2551455 Fax: +972 7 2551454  
Drawing No.  
25B-C

156600  
567680

156600  
567680

156705  
567680

156705  
567680



LEGEND	
<b>POINTS</b>	
EP	ELECTRICAL POLE
IP	TELEPHONE POLE
BM	BENCH MARK
WP	WATER PIPE
<b>SYMBOLS</b>	
[Diagonal lines]	LOOSE STONE WALL
[Circle with center dot]	BENCH MARK SYMBOL
[Circle with cross]	TREES
<b>HATCH</b>	
[Cross-hatch]	BUILDING
[Diagonal lines]	SHED

NOTE:  
1. SURVEY PERFORMED ON 24 APRIL 1999



Rev	Date	Description	Des'g'n	Ch'g'd	App	Rev.	Date	Description	Ch'g'd	App	Rev.	Date

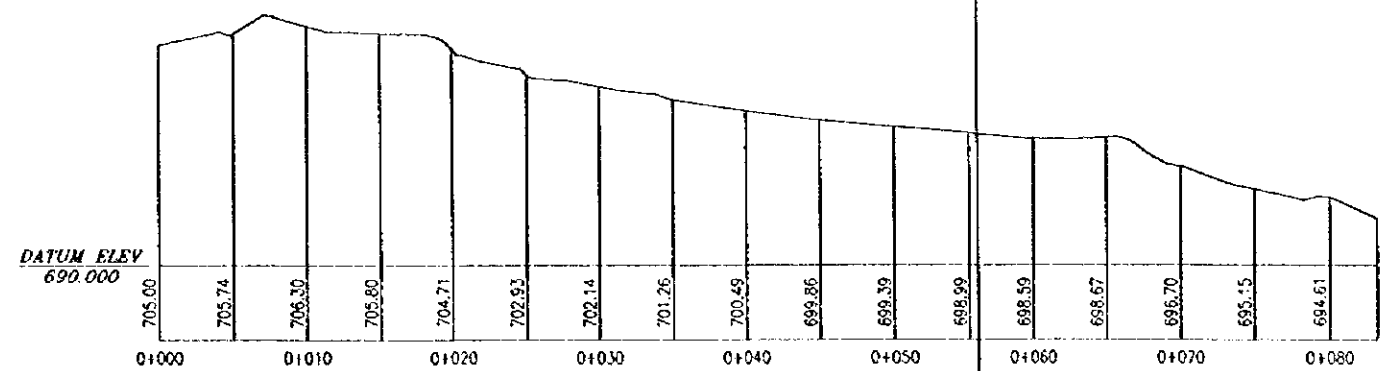
**مركز الهندسة والتخطيط**  
**CENTER FOR ENGINEERING AND PLANNING**

THE BASIC DESIGN STUDY ON THE PROJECT FOR CONSTRUCTION  
 OF SCHOOL FACILITIES FOR BASIC EDUCATION IN THE WEST BANK  
**SURVEY PLAN No.268 AL SAMMO'**

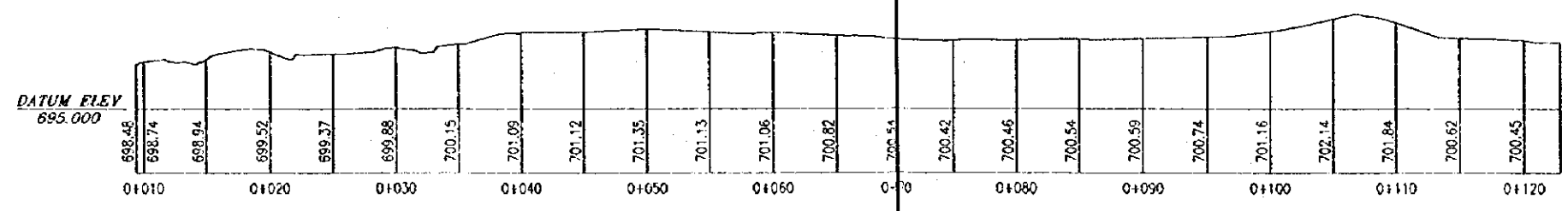
Scale 1:200  
 Date 5-MAY-1999  
 Drawn JAF  
 CAD File Name C:\PLAN\26

268-A

SECTION A-A  
SCALE 1:200



SECTION B-B  
SCALE 1:200



NOTE:  
1. SURVEY PERFORMED ON 24 APRIL 1999



Rev	Date	Description	Des'd	Des'd	Chk'd	App	Rev	Date	Description	Des'd	Des'd	Chk'd	App	Rev	Date	Description	Des'd	Des'd	Chk'd	App

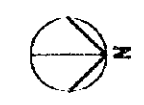
مركز التخطيط والهندسة  
CENTER FOR ENGINEERING AND PLANNING  
THE BASIC DESIGN STUDY ON THE PROJECT FOR CONSTRUCTION  
OF SCHOOL FACILITIES FOR BASIC EDUCATION IN THE WEST BANK  
SECTIONS -- SITE No.26B

CIP  
Ramallah, Palestine  
P.O. Box 301  
e-mail: cep@cepnet.com  
Tel: +972 2 295668 Fax: +972 2 295624  
Drawing No.

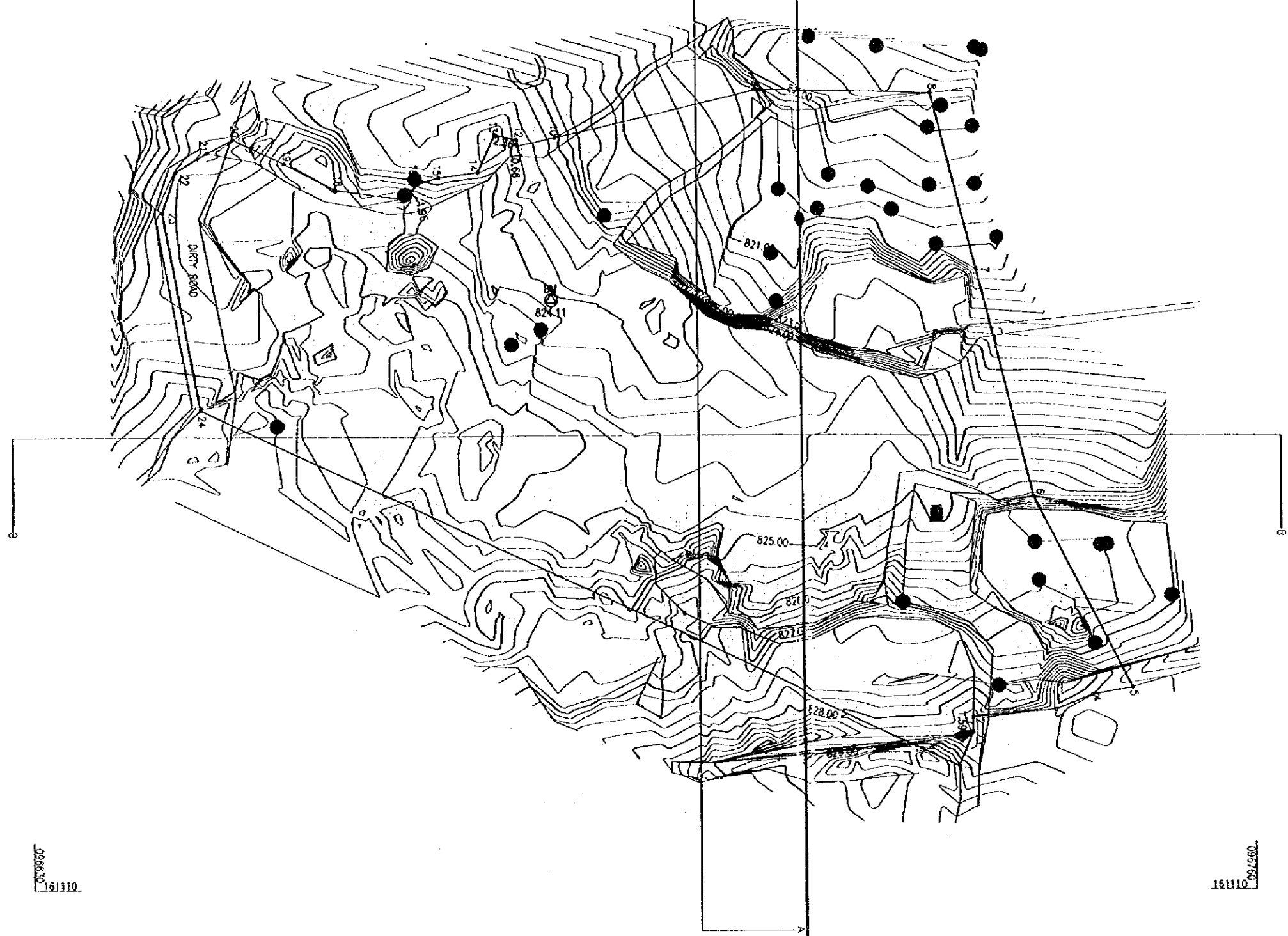
Scale 1:200 Date 5-MAY-1999 Drawn JAF CIP File Name C:\CIP\268

151065  
096630

151065  
096630



LEGEND	
POINTS	
EP	ELECTRICAL POLE
TP	TELEPHONE POLE
DM	BENCH MARK
MH	MANHOLE
SYMBOLS	
	LOOSE STONE WALL
	BENCH MARK SYMBOL
	TREES
HATCH:	
	BUILDING
	SHED



096630  
161110

096630  
161110

NOTE:  
1. SURVEY PERFORMED ON 12 MAY 1999

5m 0m METRIC 25m

Rev.	Date	Description	Des'g'd	Chk'd	App.	Rev.	Date	Description	Des'g'd	Chk'd	App.	Rev.	Date	Description	Des'g'd	Chk'd	App.

**مركز الهندسة والتخطيط**  
**CENTER FOR ENGINEERING AND PLANNING**

THE BASIC DESIGN STUDY ON THE PROJECT FOR CONSTRUCTION  
 OF SCHOOL FACILITIES FOR BASIC EDUCATION IN THE WEST BANK  
**SURVEY PLAN No.27 BANAT RAQA JADIDAH**

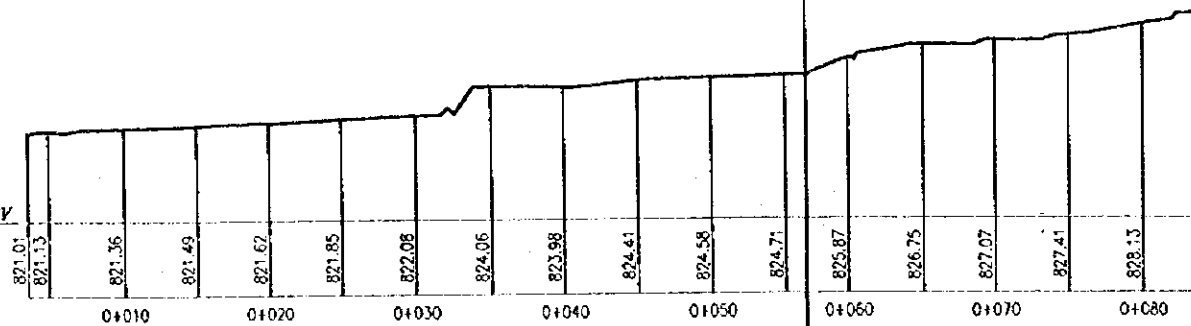
Title: \_\_\_\_\_  
 Scale: 1:200  
 Date: 5-MAY-1999  
 Drawn: JAF  
 CAD File Name: C:\VCA\24

27  
 Banat Raqa  
 200 201  
 P.O. Box 100, Ramat Gan  
 Tel. 03-723 2555 Fax. 03-723 2504

Sheet No. **27-A**

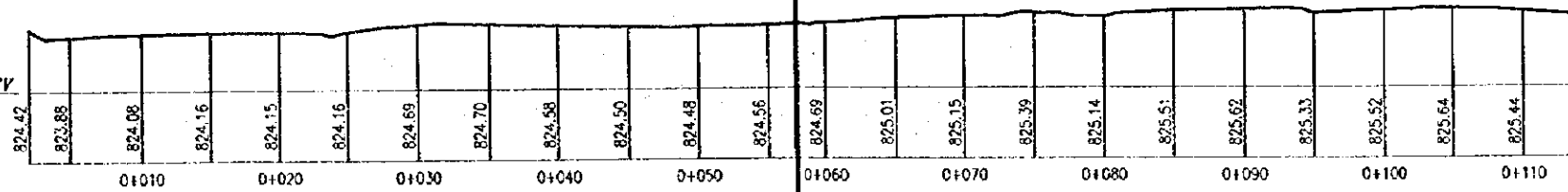
SECTION A-A  
SCALE 1:200

DATUM ELEV  
815.00



SECTION B-B  
SCALE 1:200

DATUM ELEV  
820.00



Rev	Date	Description	Des'g'd	Des	Ch'g'd	App	Rev	Date	Description	Des'g'd	Des	Ch'g'd	App	Rev	Date	Description	Des'g'd	Des	Ch'g'd	App	Scale	Date	Drawn	Check	File Name	Sheet No.
																					1:200	5-MAY-1999	JAF	C:\CA\27	27-C	

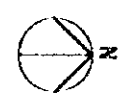
مركز الدراسات والخطط الهندسية  
**CENTER FOR ENGINEERING AND PLANNING**  
 THE BASIC DESIGN STUDY ON THE PROJECT FOR CONSTRUCTION  
 OF SCHOOL FACILITIES FOR BASIC EDUCATION IN THE WEST BANK  
**SECTIONS - SITE No 27**

27  
 Rev: AHA, PAKIR  
 2008 300  
 E-mail: cpe@up.edu.jo  
 Tel: +972 2 262055 Fax: +972 2 262044  
 Drawing No. 27-C

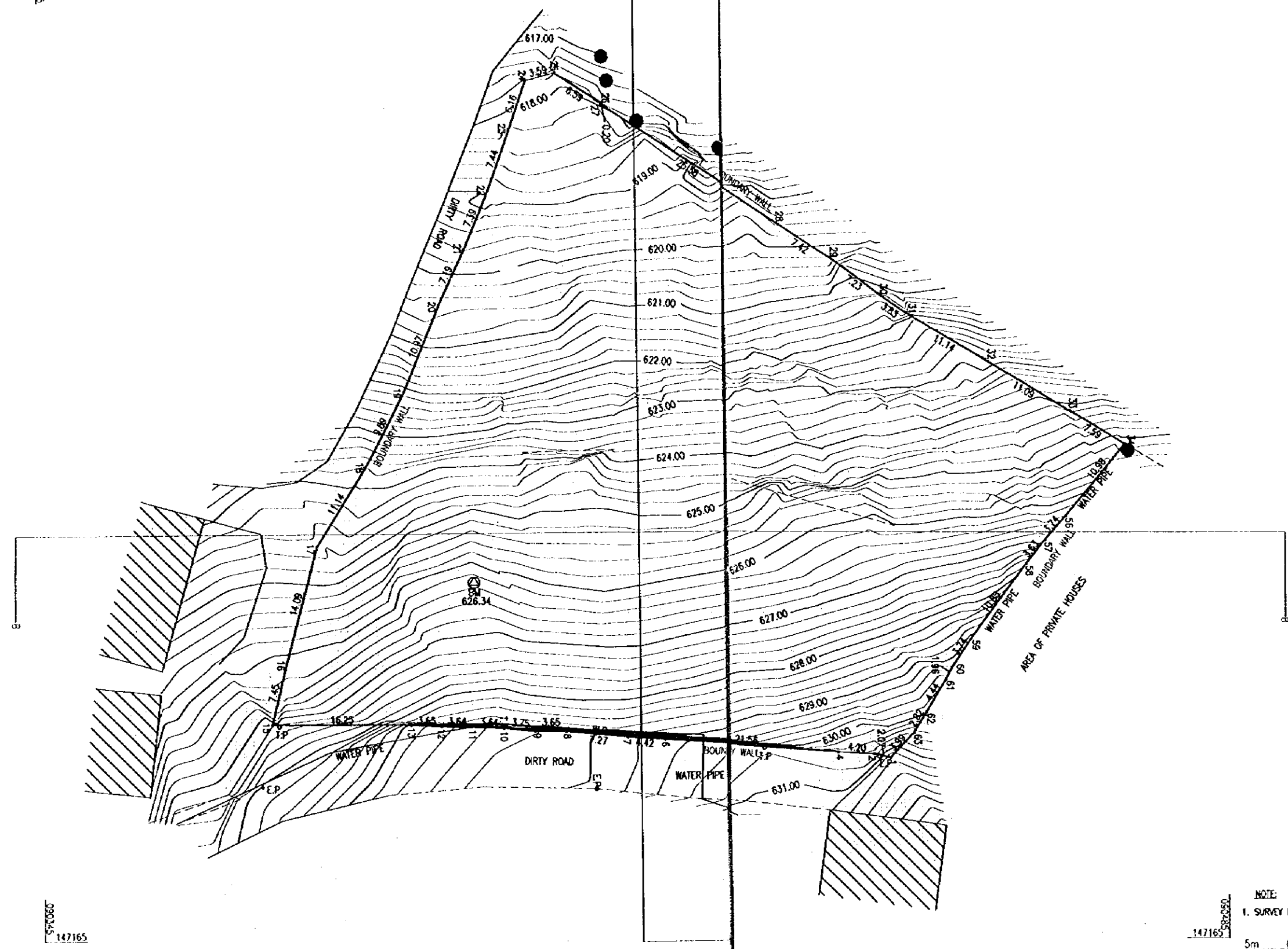


147050  
090245

147050  
090245



LEGEND	
POINTS	
EP	ELECTRICAL POLE
TP	TELEPHONE POLE
BM	BENCH MARK
MH	MANHOLE
SYMBOLS	
	LOOSE STONE WALL
	BENCH MARK SYMBOL
	TREES
HATCH	
	BUILDING
	SHED



147165  
090245

NOTE:  
1. SURVEY PERFORMED ON 4 MAY 1999

5m 0m METRIC 25m

<p>147165 090245</p>										<p>147165 090245</p>										<p>NOTE: 1. SURVEY PERFORMED ON 4 MAY 1999</p> <p>5m 0m METRIC 25m</p>										<p>147165 090245</p>									
<p>147165 090245</p>										<p>147165 090245</p>										<p>NOTE: 1. SURVEY PERFORMED ON 4 MAY 1999</p> <p>5m 0m METRIC 25m</p>										<p>147165 090245</p>									
<p>147165 090245</p>										<p>147165 090245</p>										<p>NOTE: 1. SURVEY PERFORMED ON 4 MAY 1999</p> <p>5m 0m METRIC 25m</p>										<p>147165 090245</p>									
<p>147165 090245</p>										<p>147165 090245</p>										<p>NOTE: 1. SURVEY PERFORMED ON 4 MAY 1999</p> <p>5m 0m METRIC 25m</p>										<p>147165 090245</p>									
<p>147165 090245</p>										<p>147165 090245</p>										<p>NOTE: 1. SURVEY PERFORMED ON 4 MAY 1999</p> <p>5m 0m METRIC 25m</p>										<p>147165 090245</p>									

مركز الدراسات والبحوث  
CENTER FOR ENGINEERING AND PLANNING

THE BASIC DESIGN STUDY ON THE PROJECT FOR CONSTRUCTION OF SCHOOL FACILITIES FOR BASIC EDUCATION IN THE WEST BANK

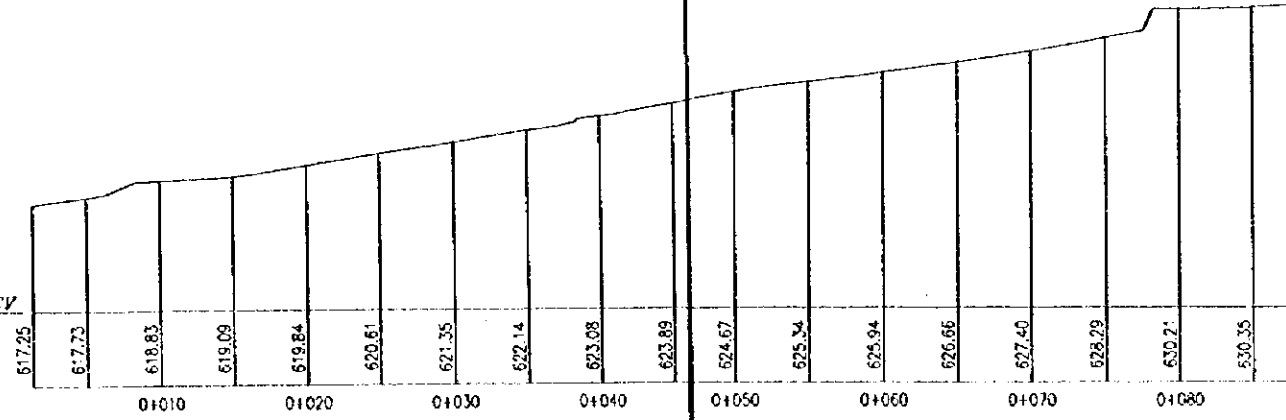
SURVEY PLAN No.288 AL-THAHRIA

Scale: 1:200  
Date: 5-MAR-1999  
Drawn: JAF  
CAD File Name: C:\MCA\28

288-A

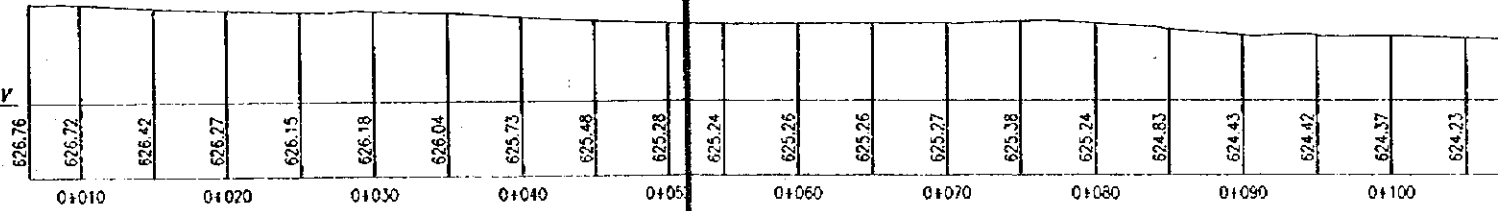
SECTION A-A  
SCALE 1:200

DATUM ELEV  
610.00




SECTION B-B  
SCALE 1:200

DATUM ELEV  
620.00



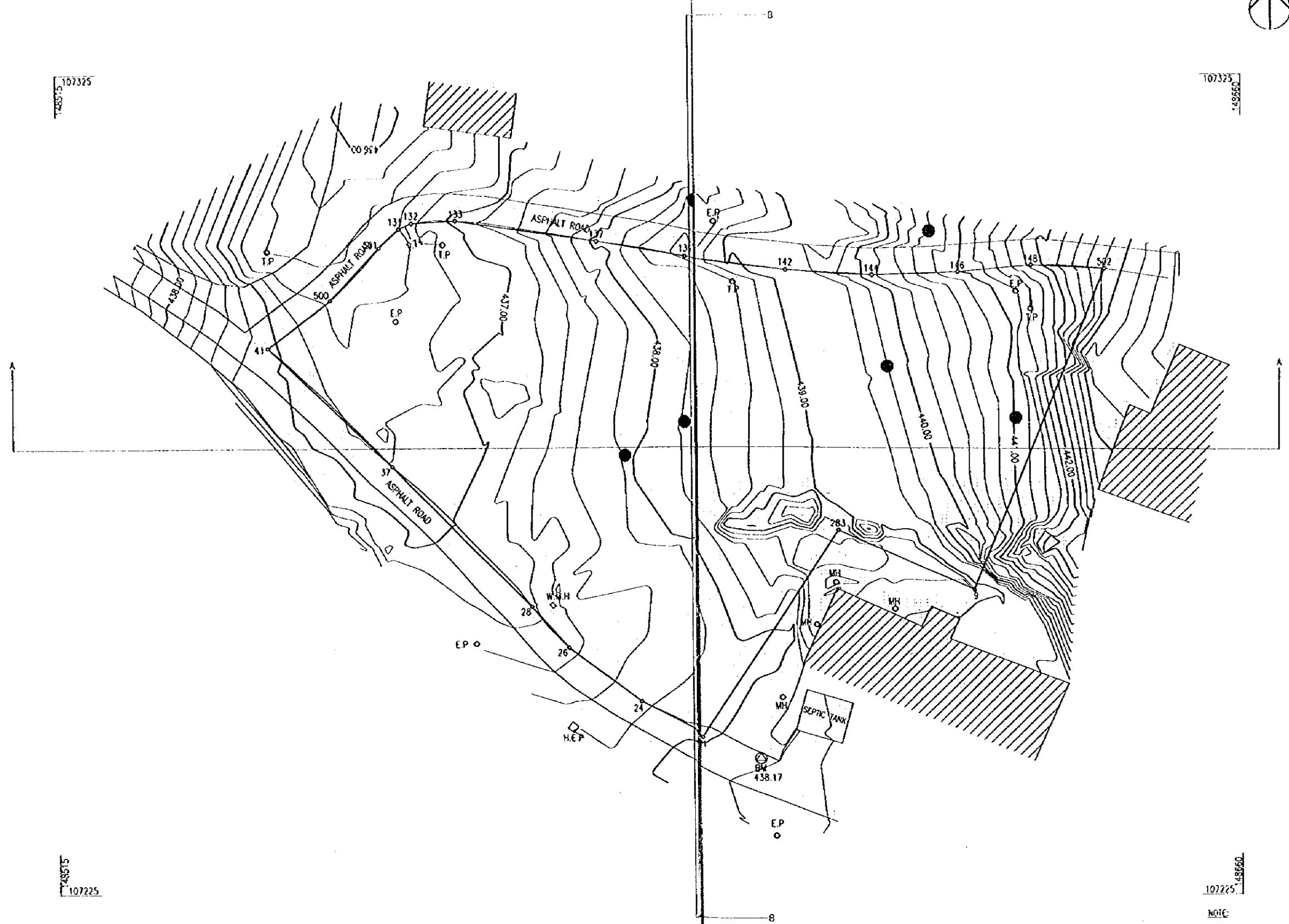
No.	Date	Description	Des'd	Dev'd	App'd	Rev'd	Date	Description	Des'd	Dev'd	App'd	Rev'd	Date	Description	Des'd	Dev'd	App'd	Rev'd	Date


  
**مركز للهندسة والتخطيط**  
**CENTER FOR ENGINEERING AND PLANNING**  
 THE BASIC DESIGN STUDY ON THE PROJECT FOR CONSTRUCTION  
 OF SCHOOL FACILITIES FOR BASIC EDUCATION IN THE WEST BANK  
**SECTIONS - SITE No.288**  
 Scale: 1:200    Date: 5-MAY-1999    Drawn: JAF    CAD File Name: C:\JAF\288

Title: THE BASIC DESIGN STUDY ON THE PROJECT FOR CONSTRUCTION OF SCHOOL FACILITIES FOR BASIC EDUCATION IN THE WEST BANK SECTIONS - SITE No.288	Drawing No. 288-C
---	-------------------



LEGEND	
POINTS	
EP	ELECTRICAL POLE
TP	TELEPHONE POLE
B.M.	BENCH MARK
M.H.	MANHOLE
H.E.P.	HIGH VOLTAGE ELECTRICAL POLE
W.M.H.	WATER MANHOLE
SYMBOLS	
	LOOSE STONE WALL
	BENCH MARK SYMBOL
	TREES
MATCH:	
	BUILDING
	SHED



NOTE:  
1. SURVEY PERFORMED ON 25 MAY 1999

5m 0m METRIC 25m

Rev.	Date	Description	Des'g'd	Dem.	Chk'd	App.	Rev.	Date	Description	Des'g'd	Dem.	Chk'd	App.	Rev.	Date	Description	Des'g'd	Dem.	Chk'd	App.

**مركز الهندسة والتخطيط**  
**CENTER FOR ENGINEERING AND PLANNING**

THE BASIC DESIGN STUDY ON THE PROJECT FOR CONSTRUCTION  
 OF SCHOOL FACILITIES FOR BASIC EDUCATION IN THE WEST BANK  
**SURVEY PLAN No.29 ITHNA**

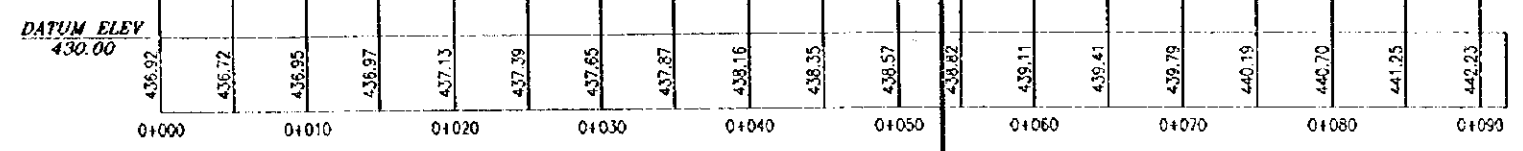
Scale: 1:200    Date: 5-JUN-1999    Drawn: JAF    CAD File Name: C:\JAF\29

29-A

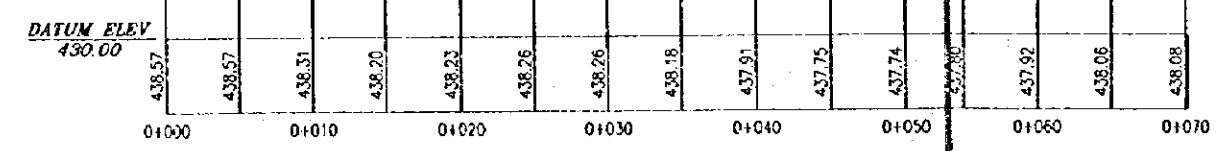


LEGEND	
POINTS	
EP	ELECTRICAL POLE
TP	TELEPHONE POLE
BW	BENCH MARK
SYMBOLS	
	LOOSE STONE WALL
	BENCH MARK SYMBOL
	TREES
HATCH:	
	BUILDING
	SHED

SECTION A-A  
SCALE 1:200



SECTION B-B  
SCALE 1:200



5m NOTE:  
1. SURVEY PERFORMED ON 24 APRIL 1999

0m METRIC 25m

Rev	Date	Description	Design	Drawn	Checked	Appr	Rev	Date	Description	Design	Drawn	Checked	Appr	Rev	Date	Description

مركز الهندسة والتخطيط  
CENTER FOR ENGINEERING AND PLANNING

THE BASIC DESIGN STUDY ON THE PROJECT FOR CONSTRUCTION OF SCHOOL FACILITIES FOR BASIC EDUCATION IN THE WEST BANK

SURVEY PLAN No.29 BEIT LUQIA

Scale: 1:200 Date: 5 MAY-1999 Drawn: JAF CAD File Name: C:\CA\15

29-C



# SOIL INVESTIGATION REPORT

18 Al-Nwai'meh



May 19, 1999

Mr. Massao Okui  
Chief Consultant of JICA  
Basic Design Study Team

**Project: Construction of School Facilities for Basic Education in the West Bank**  
**Subject: Soil Investigations and Testing**

Dear Mr. Okui,

I am pleased to attach the Report of the geotechnical investigation for site No. 18, at Al-Nwaimah, Jericho Governorate. The Report includes the results of the field and laboratory investigations and tests, geotechnical analysis and interpretation of the findings and conclusions, and recommendations to aid the design and construction of foundations.

Should you require any clarification or additional information, please contact us at your convenience.

Thank you.

Rami Abdulhadi  
Director

enclosures:



**SITE INVESTIGATION  
FOR  
PROPOSED AL-NWAIMAH SCHOOL  
AL-NWAIMAH- JERICHO  
PALESTINE**

**S 99031**

**FOR  
MESSRS. CENTER FOR ENGINEERING AND PLANNING  
RAMALLAH- PALESTINE**

**MAY- 1999**





## TABLE OF CONTENTS

	<u>Page</u>
LETTER OF TRANSMITTAL	i
TABLE OF CONTENTS	ii-iii
1.0 INTRODUCTION	1
1.1 Purpose Of Study	1
1.2 Scope Of Works	1
2.0 PROJECT DESCRIPTION	1
3.0 SITE DESCRIPTION	2
4.0 FIELD EXPLORATION & LABORATORY TESTING	6
4.1 Field Exploration	6
4.1.1 Drilling	6
4.1.2 Sampling	6
4.1.3 Field testing in Boreholes	6
4.2 Laboratory Testing	7
4.3 Laboratory Tests Results	7
5.0 SURFACE AND SUBSURFACE CONDITIONS	10
5.1 Ground Materials	10
5.2 Materials Physical & Mechanical Properties	10
5.3 Ground Water And Cavities	16
5.4 Sulphate Content in Ground Materials	16
5.5 Chloride Content in Ground Materials	18



## TABLE OF CONTENTS (Cont'd)

	<u>Page</u>
<b>6.0 CONCLUSIONS AND RECOMMENDATIONS</b>	<b>21</b>
6.1 Foundation Depth And Type	21
6.2 Allowable Bearing Pressure	21
6.3 Foundation Settlement	22
6.4 Excavation Methods	23
6.5 Excavation of Side Slopes	23
6.6 Surface Drainage	23
6.7 Subsurface Drainage System	23
6.8 Protection of Foundation From Soil Environment	23
6.9 Backfill Material And Compaction Criteria	24
6.10 Earth Pressure	24
6.11 Seismicity of Site	25
6.12 Foundation Excavation Inspection	26

## LIST OF FIGURES

Figure No. 1	General Site Location	3
Figure No. 2	General Site Plan	4
Figure No. 3	General Site Geology	5
Figure No. 4	Generalized Subsurface Profile AB	11
Figure No. 5	Casagrande Plasticity Chart.	13
Figure No. 6	Modified Chart of Expansiveness	14
Figure No. 7	Textural Classification Chart	15

## LIST OF TABLES

Table No. 1	Laboratory Tests Results	8
Table No. 2	Chemical Tests Results	9
Table No. 3	Materials Types And Properties	12
APPENDIX A	Logs Of Boring	Att.
APPENDIX B	Chloride & Sulphate	Att.



## **1.0 INTRODUCTION:**

This report presents the results of the geotechnical investigation for the proposed Al-Nwaimah School building project, site No. 18, located in Al-Nwaimah in Jericho-Palestine.

### **1.1 Purpose Of Study:**

The purpose of this study is to determine the surface and subsurface conditions at the site of the proposed structure and the physical and mechanical properties of the foundation ground in order to provide the structural engineer with sufficient information for the design of most suitable and safe foundations.

### **1.2 Scope Of Works :**

The scope of work consists of the following:

1. Collecting information and maps particular to the building site such as public services, site plan and land use maps.
2. Making visits to the site to collect information about present land use, surface topography, geological features and surface drainage.
3. Drilling of two boreholes and sampling of disturbed and undisturbed samples.
4. Carrying out the necessary laboratory tests.
5. Performing engineering analysis of field and laboratory findings.
6. Developing conclusions and recommendations for foundation design and construction.

## **2.0 PROJECT DESCRIPTION:**

The final design of the proposed school building is not defined at this stage. It is located in Al-Nwaimah in Jericho, plot No. part of 3, basin No. 10. The project is part of "Basic Design For the Construction of New Schools in The west Bank Project".



### **3.0 SITE DESCRIPTION:**

The site lies in Al-Nwaimah, in Jericho. It is bordered by an unutilized plot of small side drainage ditch from the north, an agricultural land from the east, by an unutilized plot from the west and by an unpaved road from the south. The ground surface relatively slopes to the south. The surficial ground is covered with alluvial deposits of silty clay and marl with subrounded gravels of limestone.

No apparent geologic features were observed within the site area, despite the erosive action of the adjacent small drainage ditch from the north side of the plot. According to the geologic map of Jericho and Vicinity, scale (1:50,000), published by the Geological Survey of Israel in 1973, the site of the project is located within the Mount Scopus Group. Outcrops of Mishash Formation (Senonian) are encountered. This formation consists mainly of chalk and marl. No surface faults was observed near the vicinity of the project site.

No electrical poles, sewer or water pipes were observed within the site area. However, electricity, telephone, and water services are provided for the area.

A general site location map is shown in Figure No. 1, and general site plan showing the location of the boreholes is shown in Figure No. 2. The general site geology is shown in Figure No. 3.

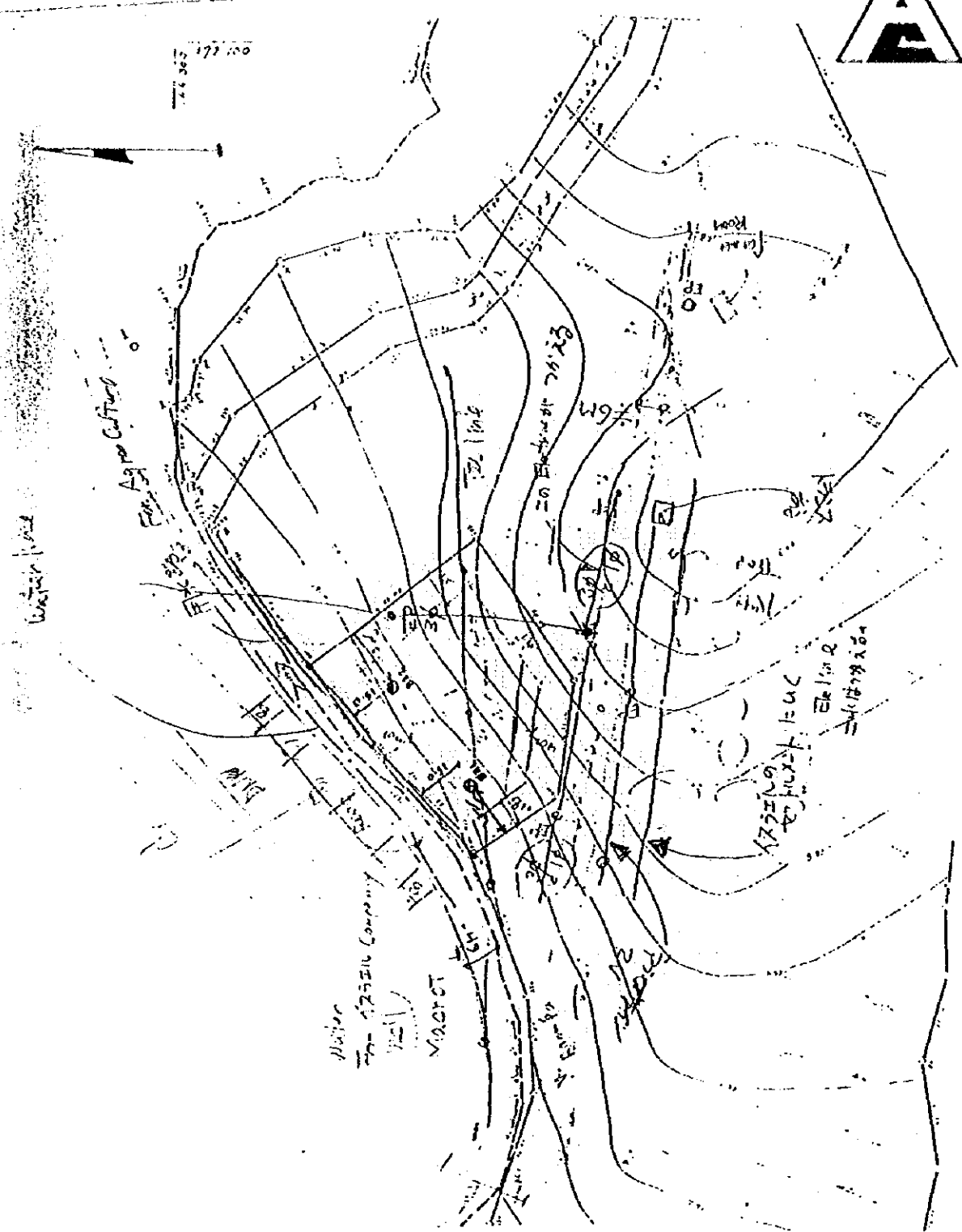


Figure No. 1: General Site location  
(Not to Scale)

# ARAB CENTER FOR ENGINEERING STUDIES

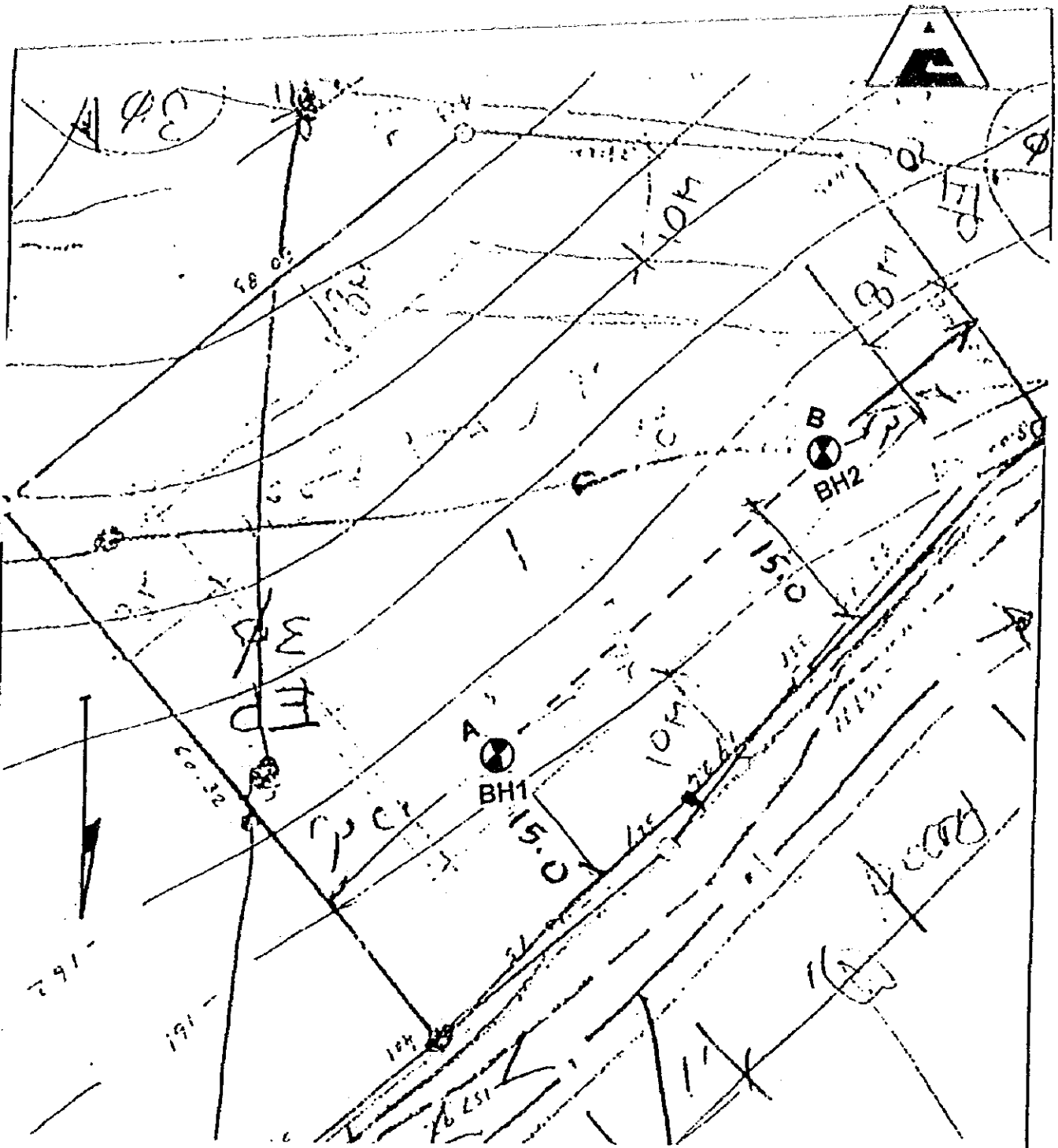


Figure No. 2: General Site Plan  
(Not to Scale)

# ARAB CENTER FOR ENGINEERING STUDIES

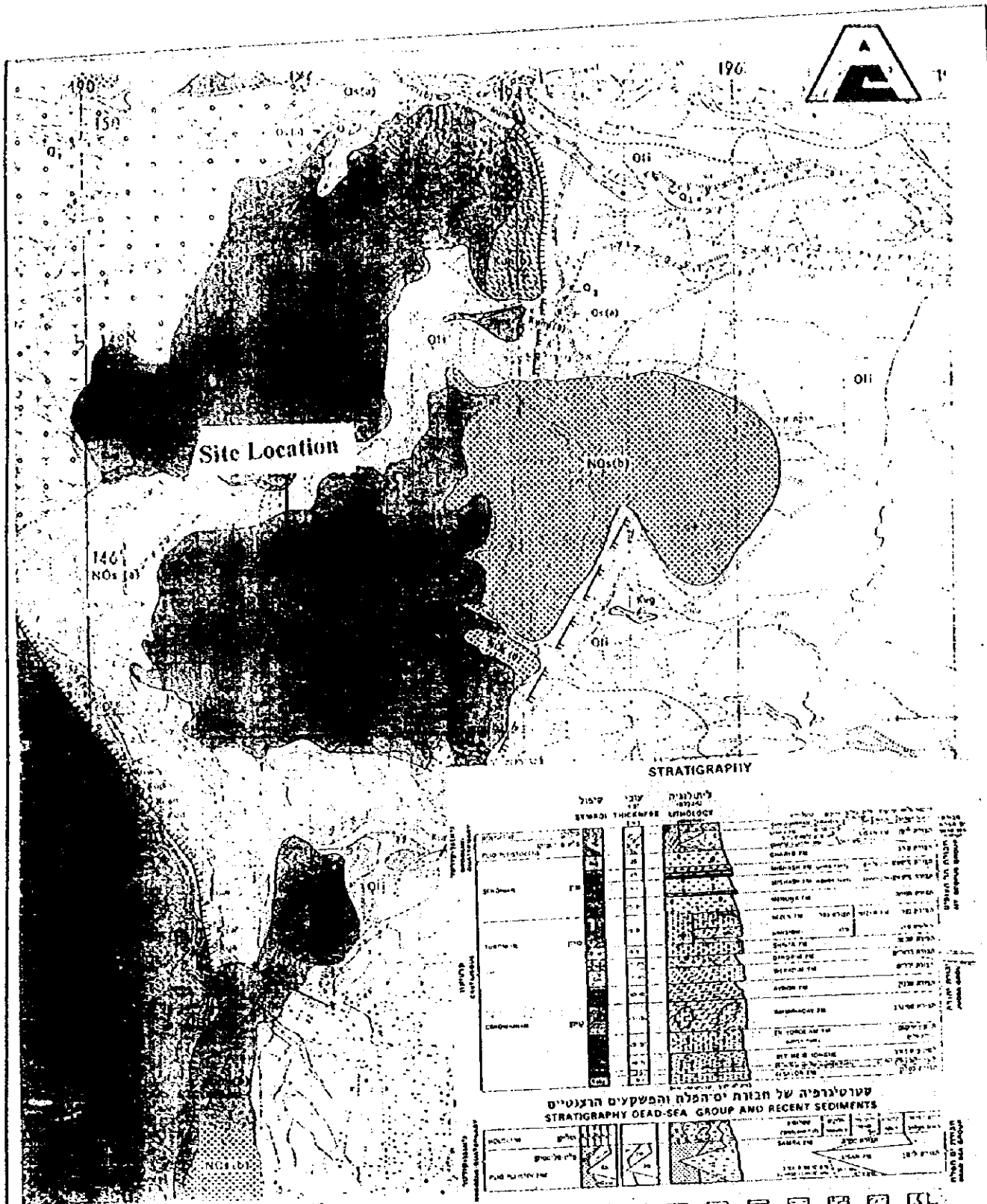


Figure No. 3: General Site Geology  
(Not to Scale)

ARAB CENTER FOR ENGINEERING STUDIES

