

(2) Cebu City

Cebu City is located at the center of the Visayas.

River System

Cebu City has five (5) related rivers, namely, Bulacao river, Kinalumsan river, Guadalupe river, Lahug river and Subang Daku river. The five rivers have similar topographic features. All the rivers are usually steep with a longitudinal gradient of 1/200 to 1/50 in the mountain area and flow from north to south almost in parallel thereby forming several drainage channels.

Lahug river is diverted at 3.32 km from its mouth to the drainage channel connecting the Subang Daku river. At this point, all base flow of Lahug river is released to the Subang Daku river basin. Cebu City has expanded to the south by reclamation of the seashore. The river mouth of Subang Daku river has been reclaimed and used for the Cebu International Port.

Drainage Area (sq. kms)	Possible Inundation Area 100-yr. Probability (sq. kms)	Estimated Annual Run-off (MCM)
64	16.3	55

Source : Principal Basin of the Philippines (NWRC : 1976)

River	Basin Area (km ²)	River Length (km)	Overall Slope (1/l)
Bulacao River	10.7	12.7	35
Kinalumsan River	17.8	11.8	47
Guadalupe River	16.3	19.3	43
Lahug River	6.3	8.5	57
Subang Daku River	12.6	9.9	53

Source: Study on Flood Control for Rivers in the Selected Urban Centers (JICA, Feb. 1995)

Population

Description	Cebu City			
	1970	1980	1990	1995
Population (thousands)	347.1	490.3	604.6	662.3
Population Density (person per sq. km)	1,235.7	1,745.4	2,173.1	2,357.8

Source: NSO

Land Uses (Cebu City)

Category	Area (ha)	Percentage (%)
A. Agriculture	0.0	0.0
1. Cropland	0.0	0.0
2. Upland Field	0.0	0.0
3. Fishpond, Saltbed	0.0	0.0
B. Park, Open Space, etc.	147.4	4.2
C. Not Identified	219.6	6.3
D. Built-up Areas	3,108.0	89.5
Total	3,475.0	100.0

Source: Study on Flood Control for Rivers in the Selected Urban Centers (JICA, 1995)

Inundation and Damages

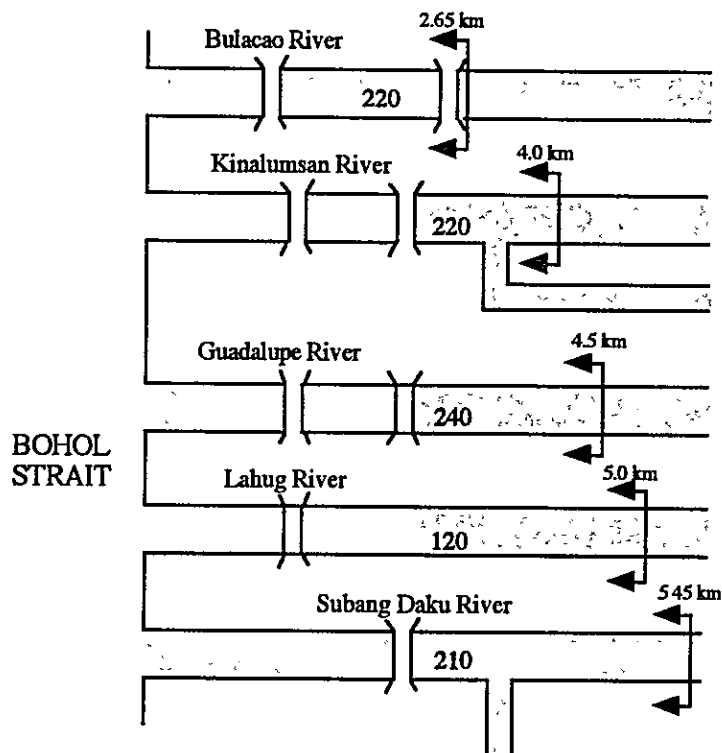
During typhoons in Cebu City, no overflows were reported in the middle reaches of the five (5) rivers. However, a narrow belt along the seashore was flooded due to flood overflow in the five (5) rivers. Although no flood discharge was observed, the flood caused by Typhoon Ruping in November 1990 was estimated to correspond to a 10-year return period based on the daily rainfall of 139.7 mm at Lahug Station. The flooded area was estimated to be approx. 800 ha.

Main Project/Study

Title	Year	Agency	Status
Study on the Flood Control for Rivers in the Selected Urban Centers	1995	JICA	M/P, F/S

Proposed Design Discharge

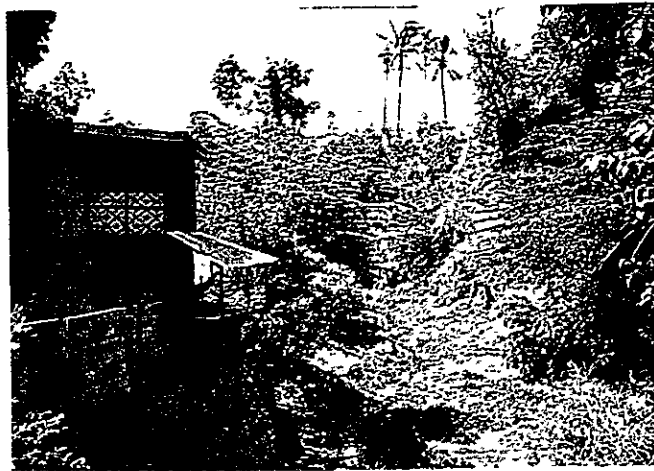
50-year Return Period



Source : Study on the Flood Control for Rivers in the Selected Urban Centers, 1995, JICA



Kinalumsan River Mouth



Guadalupe River after Tributary



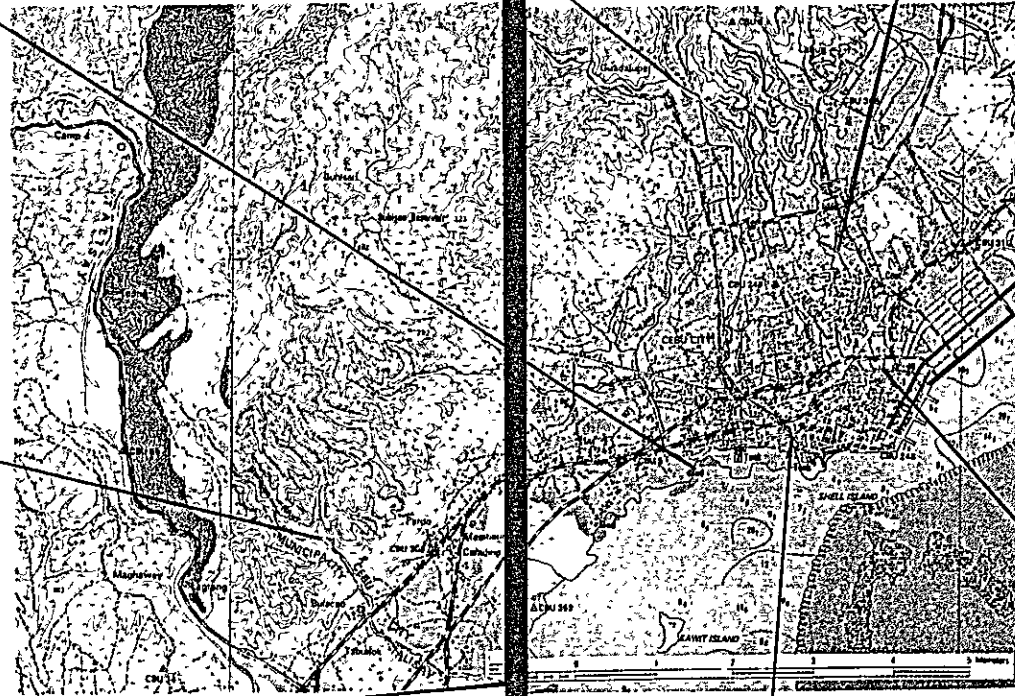
Guadalupe River (Middle Reach)



Subang Daku River (Middle Reach)



Bulacao River (Lower Reach)



Subang Daku River (Lower Reach)



Bulacao River Mouth



Guadalupe River (Lower Reach)



Lahug River (Lower Reach)

(3) Ormoc City

Ormoc City is located in the western part of the Leyte Island.

River System

Ormoc City is situated between two rivers: Anilao River on the west side and Malbasag River on the east side. With their length of 17 km to 12 km, respectively, these two rivers flow on the western slope of Mt. Banao closely in parallel to each other from northwest to southeast and eventually join tributaries running along the mainstream. The river channels in the mountain area form a deep valley where the river gradient ranges from 1/10 to 1/45. Where the rivers pass the plain area, both turn south and merge into the Ormoc Bay keeping a steep river gradient of 1/150.

Drainage Area (sq. kms)	Possible Inundation Area 100-yr Probability (sq. kms)	Estimated Annual Run-off (MCM)
37	2.4	65.7

Source : Principal Basin of the Philippines (NWRC : 1976)

River	Basin Area (km ²)	River Length (km)	Overall Slope (1/I)
Anilao River	25.2	18.3	30
Malbasag River	11.1	10.7	25

Source: Study on Flood Control for Rivers in the Selected Urban Centers (JICA, Feb. 1995)

Population

Description	Ormoc City			
	1970	1980	1990	1995
Population (thousands)	84.5	105.0	129.5	144.0
Population Density (person per sq. km)	182.1	226.1	278.8	310.2

Source: NSO

Land Uses (Ormoc City)

Category	Area (ha)	Percentage (%)
A. Agriculture	4,142.0	8.9
1. Cropland	1,104.0	2.4
2. Upland Field	3,038.0	6.5
3. Fishpond, Saltbed	0.0	0.0
B. Park Open Space, etc.	12.0	0.0
C. Not Identified	41,840.0	90.1
D. Built-up Areas	436.0	1.0
Total	46,430.0	100.0

Source: Land Resources Evaluation Report, 1986, BSWM

Inundation and Damages

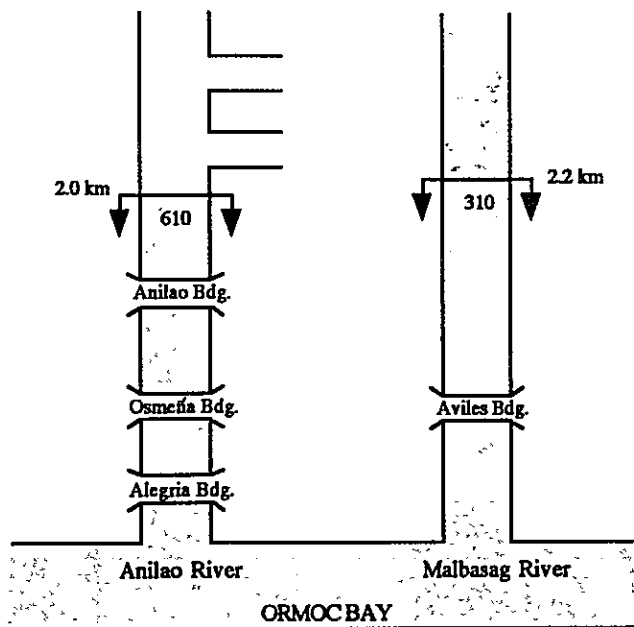
As reported many times through newspapers and communication networks because of its big death toll of about 5,000 people and missing persons of about 3,000, a big flush flood caused by the downpour brought about by Typhoon Uring on November 5, 1991 swept Ormoc City. A simple computation of flood run-off shows the peak flood discharges of the Anilao and Malbasag rivers to be 600-700 m³/s and 250-300 m³/s, respectively. They correspond to floods of about 20-year return period.

Main Project/Study

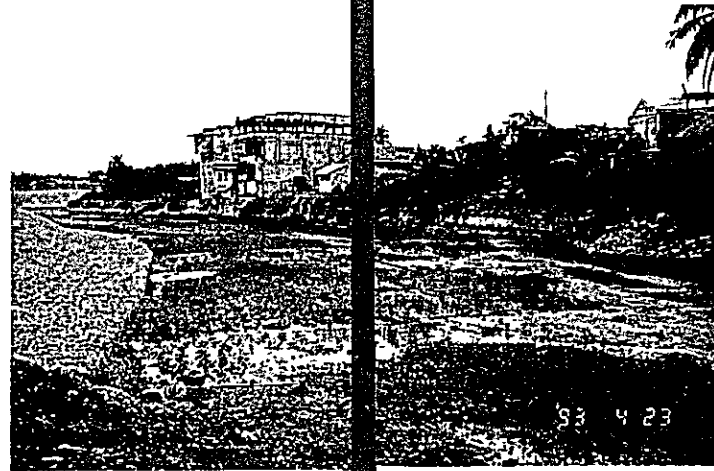
Title	Year	Agency	Status
Study on the Flood Control for Rivers in the Selected Urban Centers	1995	JICA	M/P, F/S

Proposed Design Discharge

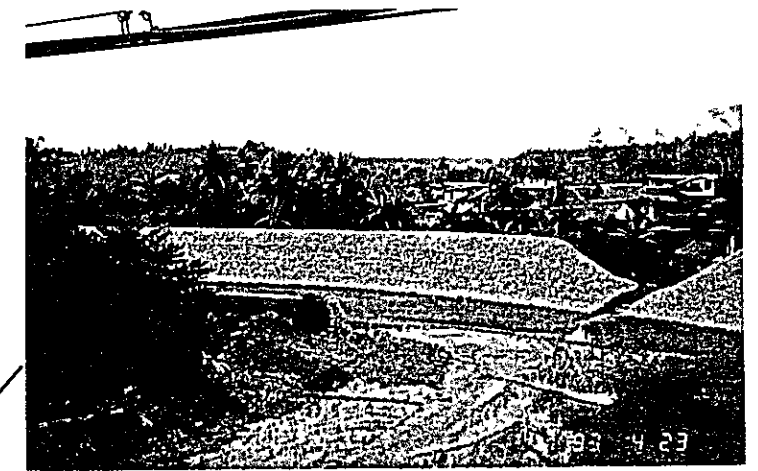
50-year Return Period



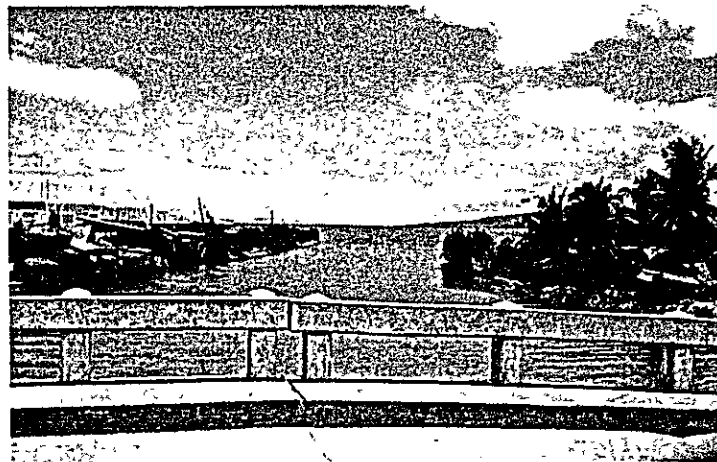
Source : Study on the Flood Control for Rivers in the Selected Urban Centers, 1995, JICA



Upstream of Anilao River



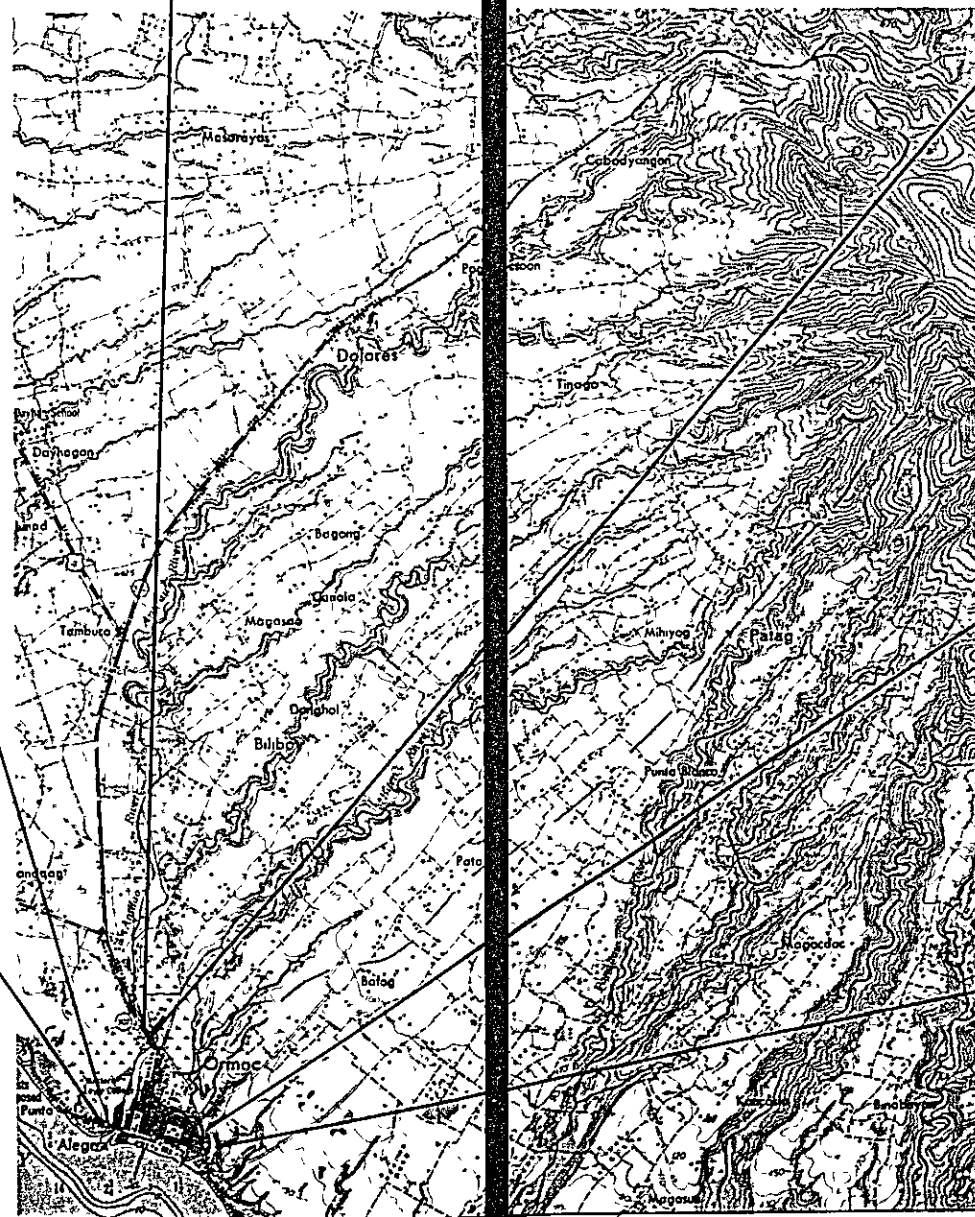
Anilao River



Mouth of Anilao River



Downstream of Anilao River



Upstream of Malbasag River



Downstream of Malbasag River

Part III : DATA BOOK

Table III. 1.0	Previous and Present JICA Flood Control and Sabo Projects
Table III. 1.1	Previous and Present OECF Flood Control and Sabo Projects
Figure III. 1.0	Flood Control and Drainage Projects in 12 Major River Basins and in Metro Manila
Figure III. 1.1	Location Map of Meteo-Hydrologic Stations in Region I
Figure III. 1.2	Data Availability of Rainfall Station in Region I
Figure III. 1.3	Data Availability of Streamflow Station in Region I
Figure III. 2.1	Location Map of Meteo-Hydrologic Stations in Region II
Figure III. 2.2	Data Availability of Rainfall Station in Region II
Figure III. 2.3	Data Availability of Streamflow Station in Region II
Figure III. 3.1	Location Map of Meteo-Hydrologic Stations in Region III
Figure III. 3.2	Data Availability of Rainfall Station in Region III
Figure III. 3.3	Data Availability of Streamflow Station in Region III
Figure III. 4.1	Location Map of Meteo-Hydrologic Stations in Region IV
Figure III. 4.2	Data Availability of Rainfall Station in Region IV
Figure III. 4.3	Data Availability of Streamflow Station in Region IV
Figure III. 5.1	Location Map of Meteo-Hydrologic Stations in Region V
Figure III. 5.2	Data Availability of Rainfall Station in Region V
Figure III. 5.3	Data Availability of Streamflow Station in Region V
Figure III. 6.1	Location Map of Meteo-Hydrologic Stations in Region VI
Figure III. 6.2	Data Availability of Rainfall Station in Region VI
Figure III. 6.3	Data Availability of Streamflow Station in Region VI
Figure III. 7.1	Location Map of Meteo-Hydrologic Stations in Region VII
Figure III. 7.2	Data Availability of Rainfall Station in Region VII
Figure III. 7.3	Data Availability of Streamflow Station in Region VII
Figure III. 8.1	Location Map of Meteo-Hydrologic Stations in Region VIII
Figure III. 8.2	Data Availability of Rainfall Station in Region VIII
Figure III. 8.3	Data Availability of Streamflow Station in Region VIII

Figure III. 9.1 Location Map of Meteo-Hydrologic Stations in Region IX

Figure III. 9.2 Data Availability of Rainfall Station in Region IX

Figure III. 9.3 Data Availability of Streamflow Station in Region IX

Figure III. 10.1 Location Map of Meteo-Hydrologic Stations in Region X

Figure III. 10.2 Data Availability of Rainfall Station in Region X

Figure III. 10.3 Data Availability of Streamflow Station in Region X

Figure III. 11.1 Location Map of Meteo-Hydrologic Stations in Region XI

Figure III. 11.2 Data Availability of Rainfall Station in Region XI

Figure III. 11.3 Data Availability of Streamflow Station in Region XI

Figure III. 12.1 Location Map of Meteo-Hydrologic Stations in Region XII

Figure III. 12.2 Data Availability of Rainfall Station in Region XII

Figure III. 12.3 Data Availability of Streamflow Station in Region XII

Table III.1.0 Previous and Present JICA Flood Control and Sabo Projects

JICA Development Survey : DPWH

Year	Project
1976-1978	Planning report on the Pasig-Potrero river flood control and Sabo project
1978-1981	Master plan for Mayon Volcano Sabo and flood control project
1979-1982	Pampanga delta development project
1982-1983	Re-Study of Mayon Volcano Sabo and flood control project
1985-1987	M/P study on the Cagayan river basin water resources development
1983-1986	Panay river basinwide flood control study
1987-1990	Study on flood control and drainage project in Metro Manila
1988-1991	Study of Agno river basin flood control project
1989-1991	Study on Ilog-Hilabangan river basin flood control project
1992-1995	Study on the flood control for rivers in selected urban centers
1992-1995	The study on flood control and mudflow control for Sacobia-Bamban/Abacan river basin draining from Mt. Pinatubo
1996-	The study on Sabo and flood control in the Laoag river basin

JICA Development Survey : Other Agency

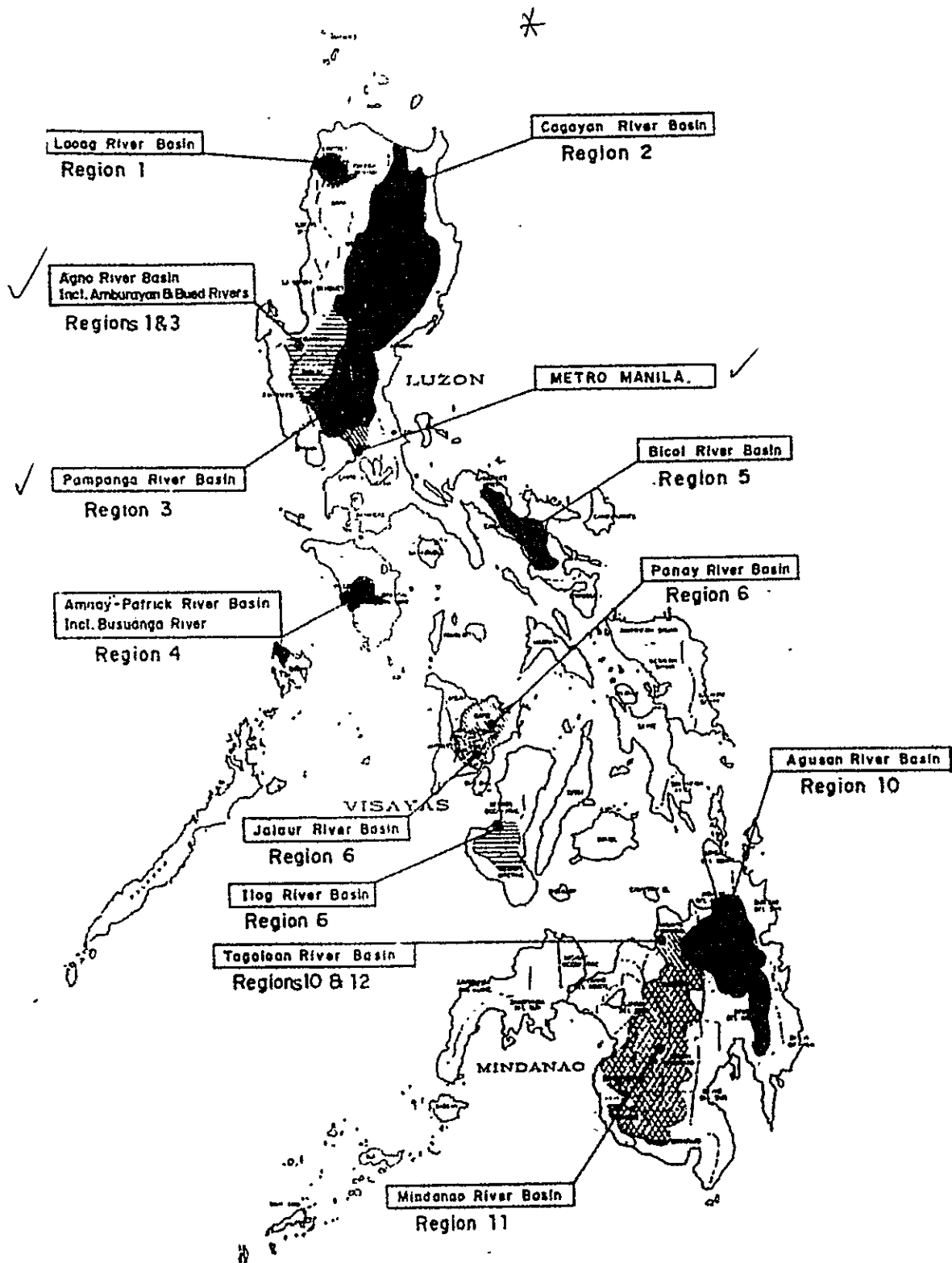
Year	Project	Agency
1976-1977	Survey for the flood forecasting system project Basic design for the extension plan of the National Hydraulic Research Center in the Republic of the Philippines Master plan study on water resources management in the Republic of the Philippines	PAGASA
1976-1977		NHRC
1977-		NWRB

Table III.1.1 Previous and Present OECF Flood Control and Sabo Projects

The Overseas Economic Cooperation Fund (OECF) Flood Control Project List

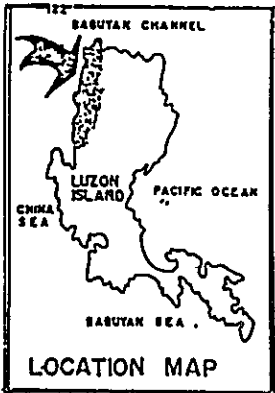
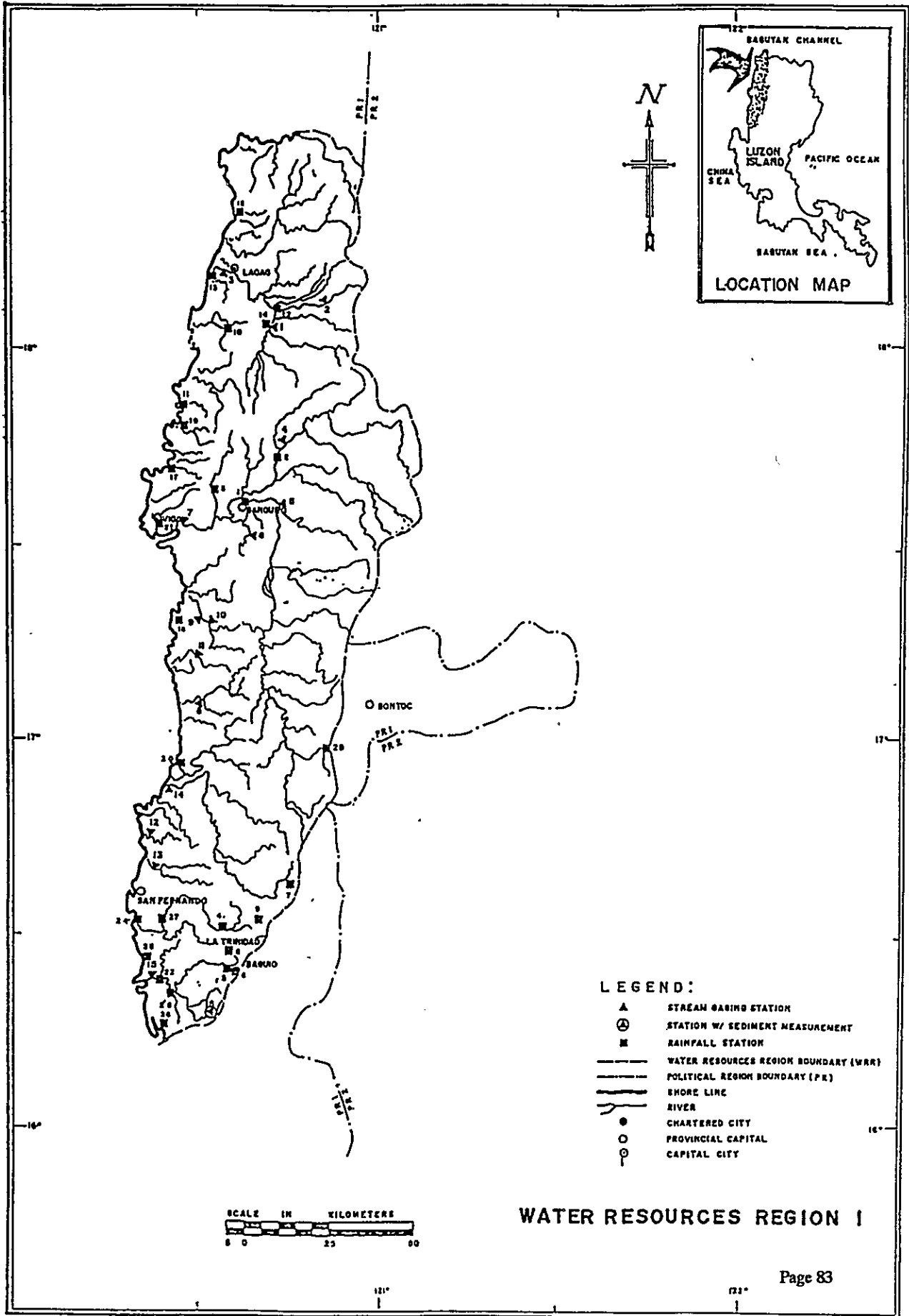
Yen Credit Package	L/A No.	Project	L/A Date	L/A Amount (million ¥)	Status
1st	PH-P001	Manila and suburbs flood control & drainage project	19730323	3,028	completed
3rd	PH-P008	Flood control dredging project in the Pampanga, Bicol & Cotabato river basins	19740801	3,187	completed
4th	PH-P010	Pasig river flood control project	19750909	5,112	completed
6th	PH-P018	The flood forecasting systems project	19780114	1,774	completed
7th	PH-P008-2	River dredging project (II)	19781109	2,429	completed
10th	PH-P052	Lower Agusan development project (E/S)	19820531	330	completed
10th	PH-P053	Flood forecasting and warning system for dam operation project	19820531	3,600	completed
11th	PH-P062	Nationwide flood control dredging project	19830909	1,140	completed
12th	PH-P066	Metro Manila drainage system rehabilitation project	19840507	3,012	completed
13th	PH-P071	For Pampanga delta development project (E/S)	19860530	705	completed
13th	PH-P073	Flood forecasting and warning system for dam operation project (II)	19860530	3,988	completed
14th	PH-P079	Metro Manila flood control project (II)	19880127	10,818	on-going
14th	PH-P085	Small water impounding management project	19880127	3,193	on-going
14th	PH-P087	Lower Agusan development project, Stage 1, Phase 1	19880127	3,372	on-going
16th	PH-P106	Pampanga delta development project, flood control component (I)	19900209	8,634	on-going
16th	PH-P107	North Laguna lakeshore urgent flood control & drainage project (E/S)	19900209	454	completed
20th	PH-P155	Agno and Allied rivers urgent rehabilitation project	19950830	8,312	on-going
Tokyo Special	PH-P166	Mt. Pinatubo hazard urgent mitigation project	19960329	6,911	on-going
21st	PH-P179	The Metro Manila flood control project West of Mangahan floodway	19970318	9,411	on-going
21st	PH-P180	Lower Agusan development project (Flood control component - phase II)	19970318	7,979	on-going

Figure III.1.0 Flood Control and Drainage Projects in 12 Major River Basins and in Metro Manila

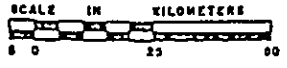


Sources : Department of Public Works and Highways (DPWH)

METEO - HYDROLOGIC STATIONS



- LEGEND:**
- ▲ STREAM GAGING STATION
 - ⊕ STATION W/ SEDIMENT MEASUREMENT
 - RAINFALL STATION
 - WATER RESOURCES REGION BOUNDARY (WRR)
 - POLITICAL REGION BOUNDARY (PR)
 - SHORE LINE
 - RIVER
 - CHARTERED CITY
 - PROVINCIAL CAPITAL
 - CAPITAL CITY



WATER RESOURCES REGION I

Figure III.1.2 Data Availability of Rainfall Station in Region I
REGION I - ILOCOS

STATION NO.	STATIONS/LOCATIONS		COORDINATES		ALTITUDE EL. - M.	MAINTAINED BY	TYPE
	LAT.	LONG.	LAT.	LONG.			
1.	17° 56'	120° 37'				PAGASA	RAIA, OR
2.	17° 45'	120° 42'				-do-	CR
3.	17° 31'	120° 33'				-do-	CC
4.	16° 31'	120° 34'				NFC	CR
5.	16° 25'	120° 35'			1,500	PAGASA	SYNCF, HYDRO, PEDAL
6.	16° 24'	120° 34'			2,254	-do-	AGRO
7.	16° 31'	120° 45'				NFC	CR
8.	16° 27'	120° 35'				PAGASA	AGRO
9.	16° 35'	120° 34'				NFC	RAIA, AGRO
10.	16° 03'	120° 28'				PAGASA	HYDRO
11.	17° 56'	120° 29'				N/A	HYDRO
12.	16° 09'	120° 40'				PAGASA	CR
13.	16° 11'	120° 32'			4	PAGASA	SYNCF, AM
14.	16° 04'	120° 31'				N/A	HYDRO
15.	16° 20'	120° 37'				PAGASA	-do-
16.	17° 48'	120° 37'				-do-	-do-
17.	17° 41'	120° 25'				-do-	-do-
18.	17° 18'	120° 37'				-do-	CR, VSS
19.	17° 25'	120° 37'				-do-	CR
20.	16° 56'	120° 37'				-do-	-do-
21.	17° 33'	120° 25'			31	-do-	SYNCF, VSS
22.	16° 22'	120° 25'				-do-	HYDRO
23.	16° 26'	120° 21'				-do-	HYDRO
24.	16° 35'	120° 30'				-do-	CR, VSS
25.	16° 26'	120° 21'				-do-	CR, VSS
26.	16° 15'	120° 24'				-do-	RAIA, CR
27.	16° 31'	120° 28'				-do-	RAIA, CR
28.	16° 21'	120° 25'				-do-	CR
29.	16° 57'	120° 22'				NFC	CR

METEO - HYDROLOGIC STATIONS

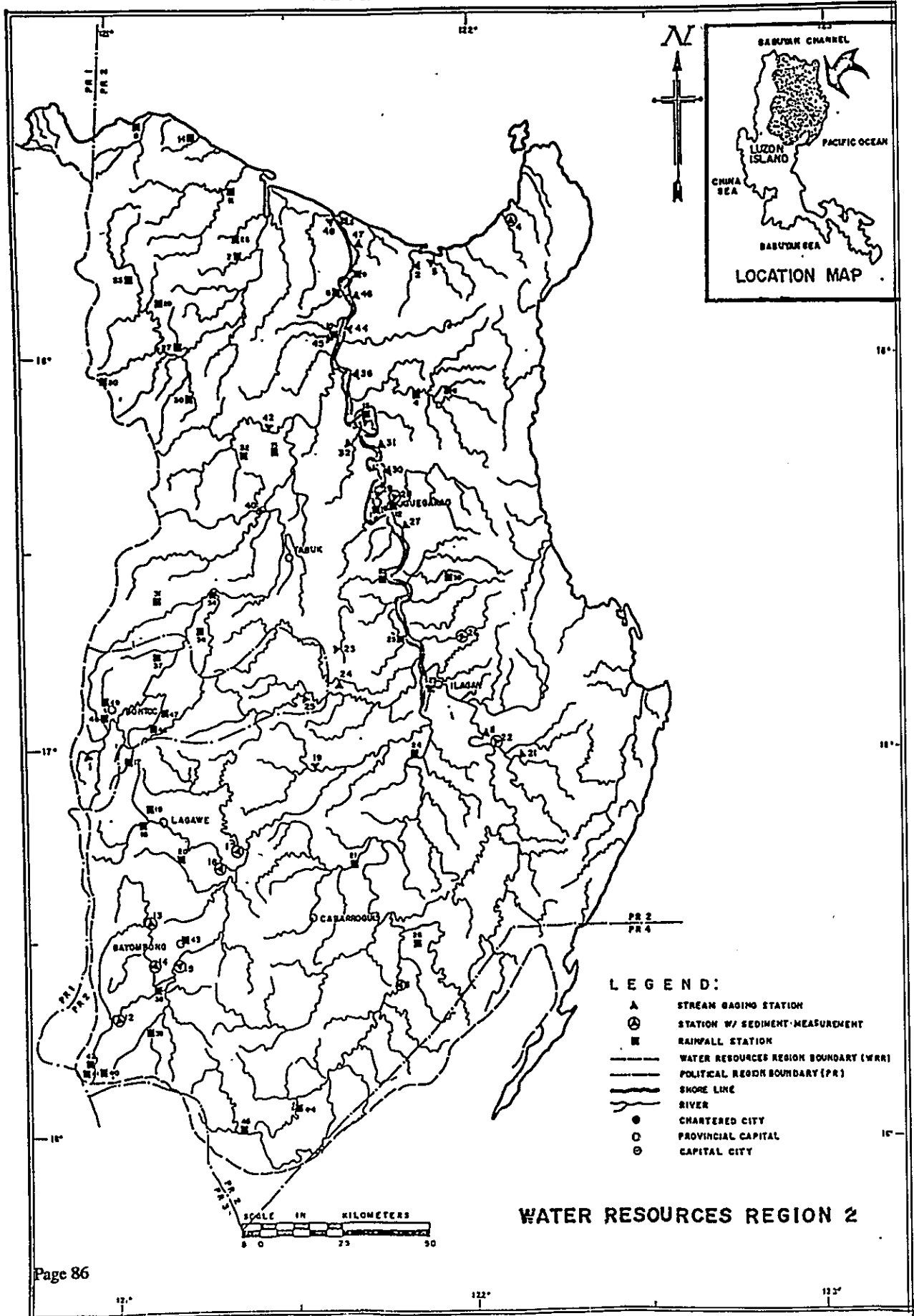


Figure III.2.2: Data Availability of Rainfall Station in Region II (1/2)
REGION 2 - CAGAYAN VALLEY

STATION NO.	STATION LOCATIONS	COORDINATES		ALTITUDE (M)	MAINTENANCE		TYPE
		LAT.	LONG.		BY	STATUS	
1.	Banco, Bataan	15° 27' 12" N	121° 37' 00" E	10	PAGASA		HYDRO, P.M.O.
2.	Albay, Bataan	15° 48' 12" N	121° 51' 00" E	123			VES, RAADAR
3.	Apaki, Cagayan	18° 21' 12" N	121° 37' 00" E	3			STNOP
4.	Mang Orosa, Region II, Cagayan	17° 54' 12" N	121° 51' 00" E		NPC		VES, HYDRO
5.	San Francisco, Region II, Cagayan	18° 12' 12" N	121° 37' 00" E				
6.	Imning, Region II, Cagayan	17° 57' 12" N	121° 54' 00" E				
7.	Cabayan, Cagayan	18° 16' 12" N	121° 27' 00" E	12	PAGASA		VES, HYDRO
8.	Claretia, Cagayan	18° 37' 12" N	121° 07' 00" E				OR
9.	Lala, Cagayan	18° 12' 12" N	121° 46' 00" E				
10.	Luzon, Cagayan	18° 07' 12" N	121° 37' 00" E				
11.	Pampuna, Cagayan	18° 26' 12" N	121° 21' 00" E				
12.	Baalaba, Probinsia, Cagayan	17° 37' 12" N	121° 47' 00" E		NPC		HYDRO
13.	Baan, Probinsia, Cagayan	17° 50' 12" N	121° 47' 00" E				
14.	Bambas, Region II, Cagayan	18° 34' 12" N	121° 14' 00" E		PAGASA		
15.	Tona, Cagayan	17° 49' 12" N	121° 25' 00" E				OR
16.	Tupangan, Cagayan	17° 37' 12" N	121° 44' 00" E				STNOP, HYDRO
17.	Bacana, Region II, Cagayan	18° 28' 12" N	121° 07' 00" E		NPC		CR
18.	Luzon, Region II, Cagayan	18° 48' 12" N	121° 04' 00" E		NPC		
19.	Namulaban, Region II, Cagayan	18° 31' 12" N	121° 07' 00" E		NPC		
20.	Luzon, Region II, Cagayan	18° 47' 12" N	121° 10' 00" E		NPC		
21.	Schagan, Isabela	18° 42' 12" N	121° 40' 00" E		PAGASA		AGRO
22.	Cabagan, Isabela	17° 28' 12" N	121° 46' 00" E				HYDRO
23.	Dagan, Isabela	17° 07' 12" N	121° 37' 00" E				BOC
24.	San Marcelino, Isabela	18° 27' 12" N	121° 50' 00" E				HYDRO
25.	Tanawan, Isabela	17° 17' 12" N	121° 49' 00" E		NPC		
26.	Sabalina, Region II, Cagayan	18° 30' 12" N	121° 30' 00" E				CR
27.	Kalinga, Region II, Cagayan	18° 02' 12" N	121° 11' 00" E		NPC		OC
28.	Schagan, Region II, Cagayan	18° 18' 12" N	121° 22' 00" E		NPC		CR
29.	Sabalina, Region II, Cagayan	18° 08' 12" N	121° 06' 00" E		NPC		
30.	Luzon, Region II, Cagayan	17° 37' 12" N	121° 17' 00" E		NPC		
31.	Luzon, Region II, Cagayan	17° 27' 12" N	121° 07' 00" E				
32.	San Marcelino, Region II, Cagayan	17° 37' 12" N	121° 27' 00" E		NPC		

Figure III.2.2 Data Availability of Rainfall Station in Region II (2/2)
REGION 2 - CAGAYAN VALLEY

STATION NO	STATION LOCATIONS	COORDINATES		ALTITUDE EL. - M.	MAINTAINED BY	TYPE
		LAT.	LONG			
33	Puhad, Kabaga-Apaya	18° 12' 21" 07			NPC	.db.
34	Kanang, Tuhad	17° 24' 21" 18			NPC	CR
35	Kabaga-Apaya	17° 24' 21" 56			.db.	CR
36	Tumana, Kabaga-Apaya	17° 18' 21" 14			NPC	CR
37	Tinglayan, Kabaga-Apaya	17° 18' 21" 07			.db.	.db.
38	Bumbang, Nueva Vizcaya	18° 23' 21" 05			.db.	.db.
39	Dupan, Nueva Vizcaya	18° 17' 21" 05			.db.	.db.
40	Comunida Sta. Pa, Nueva Vizcaya	18° 18' 21" 57			PAOASA	CC
41	Imugan, Sta. Pa, Nueva Vizcaya	18° 18' 21" 57			.db.	.db.
42	Makina, Sta. Pa, Nueva Vizcaya	18° 11' 21" 31			.db.	.db.
43	Sabana, Nueva Vizcaya	18° 31' 21" 11			NPC	CR
44	Dakipon, Malabala, Quirino	18° 05' 21" 30			NIA	HYDRO
45	Obocan, Malabala, Quirino	18° 01' 21" 21			.db.	.db.
46	Batig, Mt. Province	17° 05' 21" 05			NPC	CR
47	Lina Bantig, Mt. Province	17° 05' 21" 05			.db.	.db.
48	Bonasa, Mt. Province	17° 05' 21" 35			.db.	RMMA, CC
49	Sagada, Mt. Province	17° 07' 21" 35			.db.	CR
50	Cantuman, Nueva Nara	17° 57' 21" 57			PAOASA	CR, YES

METEO - HYDROLOGY STATIONS

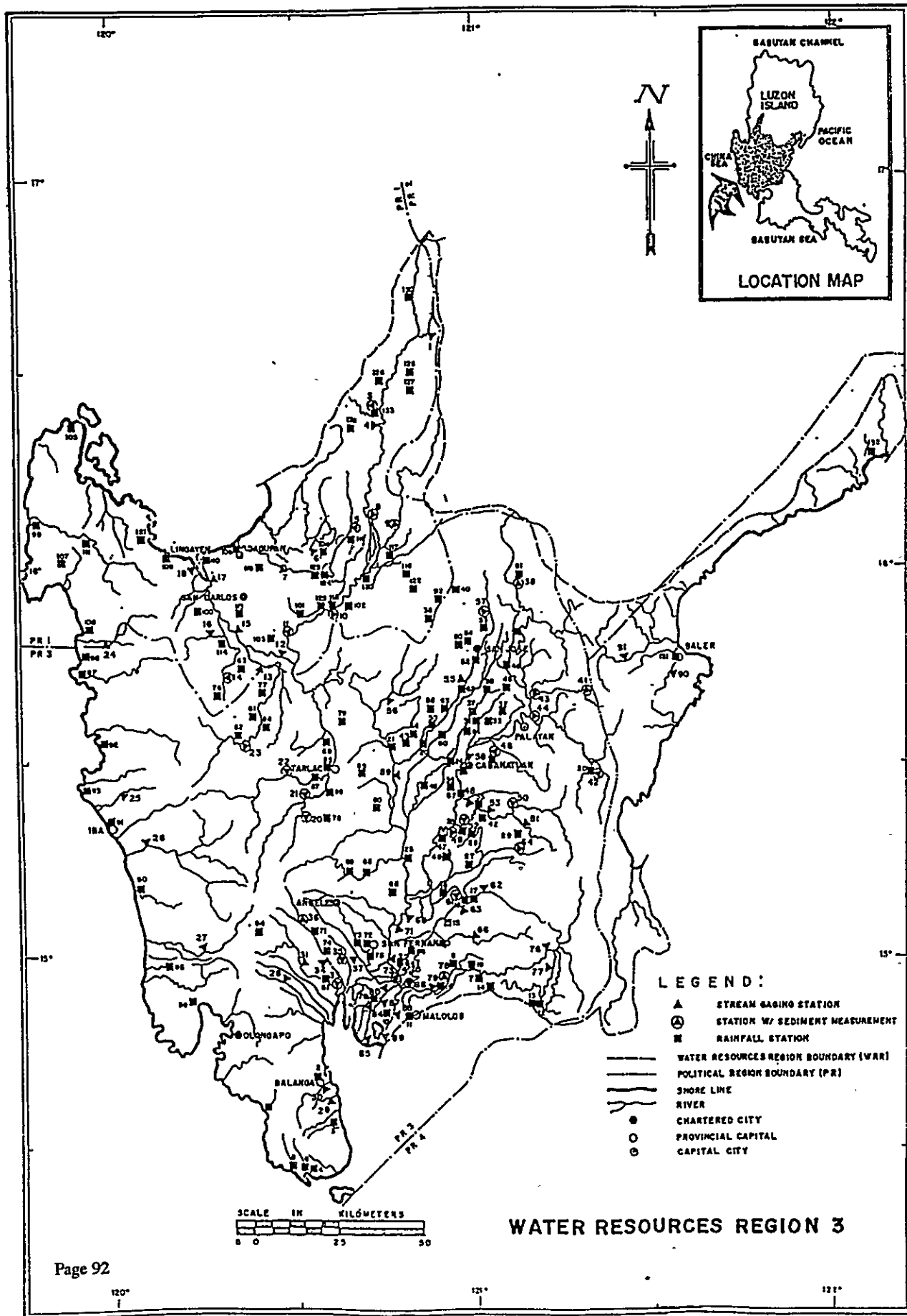


Figure III.3.2 Data Availability of Rainfall Station in Region III (1/4)
REGION 3 - CENTRAL LUZON

STATION NO.	STATIONS/LOCATIONS	COORDINATES		ALTITUDE MAINTAINED	BY	TYPE	P H E R I O D O F R E C O R D																																																																																																																																																																																																																																																																																																																																																																																																																																																																																																																																																																																																																																																																																																																																																																																																																																																																																																																																																																																																																																																																																																																																																																																																																																																																																																																																																																																																	
		LAT.	LONG.				EL. - M.	1961	1962	1963	1964	1965	1966	1967	1968	1969	1970	1971	1972	1973	1974	1975	1976	1977	1978	1979	1980	1981	1982	1983	1984	1985	1986	1987	1988	1989	1990	1991	1992	1993	1994	1995	1996	1997	1998	1999	2000	2001	2002	2003	2004	2005	2006	2007	2008	2009	2010	2011	2012	2013	2014	2015	2016	2017	2018	2019	2020	2021	2022	2023	2024	2025	2026	2027	2028	2029	2030	2031	2032	2033	2034	2035	2036	2037	2038	2039	2040	2041	2042	2043	2044	2045	2046	2047	2048	2049	2050	2051	2052	2053	2054	2055	2056	2057	2058	2059	2060	2061	2062	2063	2064	2065	2066	2067	2068	2069	2070	2071	2072	2073	2074	2075	2076	2077	2078	2079	2080	2081	2082	2083	2084	2085	2086	2087	2088	2089	2090	2091	2092	2093	2094	2095	2096	2097	2098	2099	2100	2101	2102	2103	2104	2105	2106	2107	2108	2109	2110	2111	2112	2113	2114	2115	2116	2117	2118	2119	2120	2121	2122	2123	2124	2125	2126	2127	2128	2129	2130	2131	2132	2133	2134	2135	2136	2137	2138	2139	2140	2141	2142	2143	2144	2145	2146	2147	2148	2149	2150	2151	2152	2153	2154	2155	2156	2157	2158	2159	2160	2161	2162	2163	2164	2165	2166	2167	2168	2169	2170	2171	2172	2173	2174	2175	2176	2177	2178	2179	2180	2181	2182	2183	2184	2185	2186	2187	2188	2189	2190	2191	2192	2193	2194	2195	2196	2197	2198	2199	2200	2201	2202	2203	2204	2205	2206	2207	2208	2209	2210	2211	2212	2213	2214	2215	2216	2217	2218	2219	2220	2221	2222	2223	2224	2225	2226	2227	2228	2229	2230	2231	2232	2233	2234	2235	2236	2237	2238	2239	2240	2241	2242	2243	2244	2245	2246	2247	2248	2249	2250	2251	2252	2253	2254	2255	2256	2257	2258	2259	2260	2261	2262	2263	2264	2265	2266	2267	2268	2269	2270	2271	2272	2273	2274	2275	2276	2277	2278	2279	2280	2281	2282	2283	2284	2285	2286	2287	2288	2289	2290	2291	2292	2293	2294	2295	2296	2297	2298	2299	2300	2301	2302	2303	2304	2305	2306	2307	2308	2309	2310	2311	2312	2313	2314	2315	2316	2317	2318	2319	2320	2321	2322	2323	2324	2325	2326	2327	2328	2329	2330	2331	2332	2333	2334	2335	2336	2337	2338	2339	2340	2341	2342	2343	2344	2345	2346	2347	2348	2349	2350	2351	2352	2353	2354	2355	2356	2357	2358	2359	2360	2361	2362	2363	2364	2365	2366	2367	2368	2369	2370	2371	2372	2373	2374	2375	2376	2377	2378	2379	2380	2381	2382	2383	2384	2385	2386	2387	2388	2389	2390	2391	2392	2393	2394	2395	2396	2397	2398	2399	2400	2401	2402	2403	2404	2405	2406	2407	2408	2409	2410	2411	2412	2413	2414	2415	2416	2417	2418	2419	2420	2421	2422	2423	2424	2425	2426	2427	2428	2429	2430	2431	2432	2433	2434	2435	2436	2437	2438	2439	2440	2441	2442	2443	2444	2445	2446	2447	2448	2449	2450	2451	2452	2453	2454	2455	2456	2457	2458	2459	2460	2461	2462	2463	2464	2465	2466	2467	2468	2469	2470	2471	2472	2473	2474	2475	2476	2477	2478	2479	2480	2481	2482	2483	2484	2485	2486	2487	2488	2489	2490	2491	2492	2493	2494	2495	2496	2497	2498	2499	2500	2501	2502	2503	2504	2505	2506	2507	2508	2509	2510	2511	2512	2513	2514	2515	2516	2517	2518	2519	2520	2521	2522	2523	2524	2525	2526	2527	2528	2529	2530	2531	2532	2533	2534	2535	2536	2537	2538	2539	2540	2541	2542	2543	2544	2545	2546	2547	2548	2549	2550	2551	2552	2553	2554	2555	2556	2557	2558	2559	2560	2561	2562	2563	2564	2565	2566	2567	2568	2569	2570	2571	2572	2573	2574	2575	2576	2577	2578	2579	2580	2581	2582	2583	2584	2585	2586	2587	2588	2589	2590	2591	2592	2593	2594	2595	2596	2597	2598	2599	2600	2601	2602	2603	2604	2605	2606	2607	2608	2609	2610	2611	2612	2613	2614	2615	2616	2617	2618	2619	2620	2621	2622	2623	2624	2625	2626	2627	2628	2629	2630	2631	2632	2633	2634	2635	2636	2637	2638	2639	2640	2641	2642	2643	2644	2645	2646	2647	2648	2649	2650	2651	2652	2653	2654	2655	2656	2657	2658	2659	2660	2661	2662	2663	2664	2665	2666	2667	2668	2669	2670	2671	2672	2673	2674	2675	2676	2677	2678	2679	2680	2681	2682	2683	2684	2685	2686	2687	2688	2689	2690	2691	2692	2693	2694	2695	2696	2697	2698	2699	2700	2701	2702	2703	2704	2705	2706	2707	2708	2709	2710	2711	2712	2713	2714	2715	2716	2717	2718	2719	2720	2721	2722	2723	2724	2725	2726	2727	2728	2729	2730	2731	2732	2733	2734	2735	2736	2737	2738	2739	2740	2741	2742	2743	2744	2745	2746	2747	2748	2749	2750	2751	2752	2753	2754	2755	2756	2757	2758	2759	2760	2761	2762	2763	2764	2765	2766	2767	2768	2769	2770	2771	2772	2773	2774	2775	2776	2777	2778	2779	2780	2781	2782	2783	2784	2785	2786	2787	2788	2789	2790	2791	2792	2793	2794	2795	2796	2797	2798	2799	2800	2801	2802	2803	2804	2805	2806	2807	2808	2809	2810	2811	2812	2813	2814	2815	2816	2817	2818	2819	2820	2821	2822	2823	2824	2825	2826	2827	2828	2829	2830	2831	2832	2833	2834	2835	2836	2837	2838	2839	2840	2841	2842	2843	2844	2845	2846	2847	2848	2849	2850	2851	2852	2853	2854	2855	2856	2857	2858	2859	2860	2861	2862	2863	2864	2865	2866	2867	2868	2869	2870	2871	2872	2873	2874	2875	2876	2877	2878	2879	2880	2881	2882	2883	2884	2885	2886	2887	2888	2889	2890	2891	2892	2893	2894	2895	2896	2897	2898	2899	2900	2901	2902	2903	2904	2905	2906	2907	2908	2909	2910	2911	2912	2913	2914	2915	2916	2917	2918	2919	2920	2921	2922	2923	2924	2925	2926	2927	2928	2929	2930	2931	2932	2933	2934	2935	2936	2937	2938	2939	2940	2941	2942	2943	2944	2945	2946	2947	2948	2949	2950	2951	2952	2953	2954	2955	2956	2957	2958	2959	2960	2961	2962	2963	2964	2965	2966	2967	2968	2969	2970	2971	2972	2973	2974	2975	2976	2977	2978	2979	2980	2981	2982	2983	2984	2985	2986	2987	2988	2989	2990	2991	2992	2993	2994	2995	2996	2997	2998	2999	3000	3001	3002	3003	3004	3005	3006	3007	3008	3009	3010	3011	3012	3013	3014	3015	3016	3017	3018	3019	3020	3021	3022	3023	3024	3025	3026	3027	3028	3029	3030	3031	3032	3033	3034	3035	3036	3037	3038	3039	3040	3041	3042	3043	3044	3045	3046	3047	3048	3049	3050	3051	3052	3053	3054	3055	3056	3057	3058	3059	3060	3061	3062	3063	3064	3065	3066	3067	3068	3069	3070	3071	3072	3073	3074	3075	3076	3077	3078	3079	3080	3081	3082	3083	3084	3085	3086	3087	3088	3089	3090	3091	3092	3093	3094	3095	3096	3097	3098	3099	3100	3101	3102	3103	3104	3105	3106	3107	3108	3109	3110	3111	3112	3113	3114	3115	3116	3117	3118	3119	3120	3121	3122	3123	3124	3125	3126	3127	3128	3129	3130	3131	3132	3133	3134	3135	3136	3137	3138	3139	3140	3141	3142	3143	3144	3145	3146	3147	3148	3149	3150	3151	3152	3153	3154	3155	3156	3157	3158	3159	3160	3161	3162	3163	3164	3165	3166	3167	3168	3169	3170	3171	3172	3173	3174	3175	3176	3177	3178	3179	3180	3181	3182	3183	3184	3185	3186	3187	3188	3189	3190	3191	3192	3193	3194	3195	3196	3197	3198	3199	3200	3201	3202	3203	3204	3205	3206	3207	3208	3209	3210	3211	3212	3213	3214	3215	3216	3217	3218	3219	3220	3221	3222	3223	3224	3225	3226	3227	3228	3229	3230	3231	3232	3233	3234	3235	3236	3237	3238	3239	3240	3241	3242	3243	3244	3245	3246	3247	3248	3249	3250	3251	3252	3253	3254	3255	3256	3257	3258	3259	3260	3261	3262	3263	3264	3265	3266	3267	3268	3269	3270	3271	3272	3273	3274	3275	3276	3277	3278	3279	3280	3281	3282	3283	3284	3285	3286	3287	3288	3289	3290	3291	3292	3293	3294	3295	3296	3297	3298	3299	3300	3301	3302	3303	3304	3305

Figure III.3.2 Data Availability of Rainfall Station in Region III (2/4)
REGION 3 - CENTRAL LUZON

STATION NO.	STATION LOCATIONS	COORDINATES		ALTITUDE EL. - M	BY MAINTAINED	TYPE	P E R I O D O F R E C O R D I N G																																																																																																																																																																																																																																																																																																																																																																																																																																																																																																																																																																																																																																																																																																																																																																																																																																																																																																																																																																																																																																																																																																																																																																																																																																																																																																																																																																																													
		LAT.	LONG.				1951	1952	1953	1954	1955	1956	1957	1958	1959	1960	1961	1962	1963	1964	1965	1966	1967	1968	1969	1970	1971	1972	1973	1974	1975	1976	1977	1978	1979	1980	1981	1982	1983	1984	1985	1986	1987	1988	1989	1990	1991	1992	1993	1994	1995	1996	1997	1998	1999	2000	2001	2002	2003	2004	2005	2006	2007	2008	2009	2010	2011	2012	2013	2014	2015	2016	2017	2018	2019	2020	2021	2022	2023	2024	2025	2026	2027	2028	2029	2030	2031	2032	2033	2034	2035	2036	2037	2038	2039	2040	2041	2042	2043	2044	2045	2046	2047	2048	2049	2050	2051	2052	2053	2054	2055	2056	2057	2058	2059	2060	2061	2062	2063	2064	2065	2066	2067	2068	2069	2070	2071	2072	2073	2074	2075	2076	2077	2078	2079	2080	2081	2082	2083	2084	2085	2086	2087	2088	2089	2090	2091	2092	2093	2094	2095	2096	2097	2098	2099	2100	2101	2102	2103	2104	2105	2106	2107	2108	2109	2110	2111	2112	2113	2114	2115	2116	2117	2118	2119	2120	2121	2122	2123	2124	2125	2126	2127	2128	2129	2130	2131	2132	2133	2134	2135	2136	2137	2138	2139	2140	2141	2142	2143	2144	2145	2146	2147	2148	2149	2150	2151	2152	2153	2154	2155	2156	2157	2158	2159	2160	2161	2162	2163	2164	2165	2166	2167	2168	2169	2170	2171	2172	2173	2174	2175	2176	2177	2178	2179	2180	2181	2182	2183	2184	2185	2186	2187	2188	2189	2190	2191	2192	2193	2194	2195	2196	2197	2198	2199	2200	2201	2202	2203	2204	2205	2206	2207	2208	2209	2210	2211	2212	2213	2214	2215	2216	2217	2218	2219	2220	2221	2222	2223	2224	2225	2226	2227	2228	2229	2230	2231	2232	2233	2234	2235	2236	2237	2238	2239	2240	2241	2242	2243	2244	2245	2246	2247	2248	2249	2250	2251	2252	2253	2254	2255	2256	2257	2258	2259	2260	2261	2262	2263	2264	2265	2266	2267	2268	2269	2270	2271	2272	2273	2274	2275	2276	2277	2278	2279	2280	2281	2282	2283	2284	2285	2286	2287	2288	2289	2290	2291	2292	2293	2294	2295	2296	2297	2298	2299	2300	2301	2302	2303	2304	2305	2306	2307	2308	2309	2310	2311	2312	2313	2314	2315	2316	2317	2318	2319	2320	2321	2322	2323	2324	2325	2326	2327	2328	2329	2330	2331	2332	2333	2334	2335	2336	2337	2338	2339	2340	2341	2342	2343	2344	2345	2346	2347	2348	2349	2350	2351	2352	2353	2354	2355	2356	2357	2358	2359	2360	2361	2362	2363	2364	2365	2366	2367	2368	2369	2370	2371	2372	2373	2374	2375	2376	2377	2378	2379	2380	2381	2382	2383	2384	2385	2386	2387	2388	2389	2390	2391	2392	2393	2394	2395	2396	2397	2398	2399	2400	2401	2402	2403	2404	2405	2406	2407	2408	2409	2410	2411	2412	2413	2414	2415	2416	2417	2418	2419	2420	2421	2422	2423	2424	2425	2426	2427	2428	2429	2430	2431	2432	2433	2434	2435	2436	2437	2438	2439	2440	2441	2442	2443	2444	2445	2446	2447	2448	2449	2450	2451	2452	2453	2454	2455	2456	2457	2458	2459	2460	2461	2462	2463	2464	2465	2466	2467	2468	2469	2470	2471	2472	2473	2474	2475	2476	2477	2478	2479	2480	2481	2482	2483	2484	2485	2486	2487	2488	2489	2490	2491	2492	2493	2494	2495	2496	2497	2498	2499	2500	2501	2502	2503	2504	2505	2506	2507	2508	2509	2510	2511	2512	2513	2514	2515	2516	2517	2518	2519	2520	2521	2522	2523	2524	2525	2526	2527	2528	2529	2530	2531	2532	2533	2534	2535	2536	2537	2538	2539	2540	2541	2542	2543	2544	2545	2546	2547	2548	2549	2550	2551	2552	2553	2554	2555	2556	2557	2558	2559	2560	2561	2562	2563	2564	2565	2566	2567	2568	2569	2570	2571	2572	2573	2574	2575	2576	2577	2578	2579	2580	2581	2582	2583	2584	2585	2586	2587	2588	2589	2590	2591	2592	2593	2594	2595	2596	2597	2598	2599	2600	2601	2602	2603	2604	2605	2606	2607	2608	2609	2610	2611	2612	2613	2614	2615	2616	2617	2618	2619	2620	2621	2622	2623	2624	2625	2626	2627	2628	2629	2630	2631	2632	2633	2634	2635	2636	2637	2638	2639	2640	2641	2642	2643	2644	2645	2646	2647	2648	2649	2650	2651	2652	2653	2654	2655	2656	2657	2658	2659	2660	2661	2662	2663	2664	2665	2666	2667	2668	2669	2670	2671	2672	2673	2674	2675	2676	2677	2678	2679	2680	2681	2682	2683	2684	2685	2686	2687	2688	2689	2690	2691	2692	2693	2694	2695	2696	2697	2698	2699	2700	2701	2702	2703	2704	2705	2706	2707	2708	2709	2710	2711	2712	2713	2714	2715	2716	2717	2718	2719	2720	2721	2722	2723	2724	2725	2726	2727	2728	2729	2730	2731	2732	2733	2734	2735	2736	2737	2738	2739	2740	2741	2742	2743	2744	2745	2746	2747	2748	2749	2750	2751	2752	2753	2754	2755	2756	2757	2758	2759	2760	2761	2762	2763	2764	2765	2766	2767	2768	2769	2770	2771	2772	2773	2774	2775	2776	2777	2778	2779	2780	2781	2782	2783	2784	2785	2786	2787	2788	2789	2790	2791	2792	2793	2794	2795	2796	2797	2798	2799	2800	2801	2802	2803	2804	2805	2806	2807	2808	2809	2810	2811	2812	2813	2814	2815	2816	2817	2818	2819	2820	2821	2822	2823	2824	2825	2826	2827	2828	2829	2830	2831	2832	2833	2834	2835	2836	2837	2838	2839	2840	2841	2842	2843	2844	2845	2846	2847	2848	2849	2850	2851	2852	2853	2854	2855	2856	2857	2858	2859	2860	2861	2862	2863	2864	2865	2866	2867	2868	2869	2870	2871	2872	2873	2874	2875	2876	2877	2878	2879	2880	2881	2882	2883	2884	2885	2886	2887	2888	2889	2890	2891	2892	2893	2894	2895	2896	2897	2898	2899	2900	2901	2902	2903	2904	2905	2906	2907	2908	2909	2910	2911	2912	2913	2914	2915	2916	2917	2918	2919	2920	2921	2922	2923	2924	2925	2926	2927	2928	2929	2930	2931	2932	2933	2934	2935	2936	2937	2938	2939	2940	2941	2942	2943	2944	2945	2946	2947	2948	2949	2950	2951	2952	2953	2954	2955	2956	2957	2958	2959	2960	2961	2962	2963	2964	2965	2966	2967	2968	2969	2970	2971	2972	2973	2974	2975	2976	2977	2978	2979	2980	2981	2982	2983	2984	2985	2986	2987	2988	2989	2990	2991	2992	2993	2994	2995	2996	2997	2998	2999	3000	3001	3002	3003	3004	3005	3006	3007	3008	3009	3010	3011	3012	3013	3014	3015	3016	3017	3018	3019	3020	3021	3022	3023	3024	3025	3026	3027	3028	3029	3030	3031	3032	3033	3034	3035	3036	3037	3038	3039	3040	3041	3042	3043	3044	3045	3046	3047	3048	3049	3050	3051	3052	3053	3054	3055	3056	3057	3058	3059	3060	3061	3062	3063	3064	3065	3066	3067	3068	3069	3070	3071	3072	3073	3074	3075	3076	3077	3078	3079	3080	3081	3082	3083	3084	3085	3086	3087	3088	3089	3090	3091	3092	3093	3094	3095	3096	3097	3098	3099	3100	3101	3102	3103	3104	3105	3106	3107	3108	3109	3110	3111	3112	3113	3114	3115	3116	3117	3118	3119	3120	3121	3122	3123	3124	3125	3126	3127	3128	3129	3130	3131	3132	3133	3134	3135	3136	3137	3138	3139	3140	3141	3142	3143	3144	3145	3146	3147	3148	3149	3150	3151	3152	3153	3154	3155	3156	3157	3158	3159	3160	3161	3162	3163	3164	3165	3166	3167	3168	3169	3170	3171	3172	3173	3174	3175	3176	3177	3178	3179	3180	3181	3182	3183	3184	3185	3186	3187	3188	3189	3190	3191	3192	3193	3194	3195	3196	3197	3198	3199	3200	3201	3202	3203	3204	3205	3206	3207	3208	3209	3210	3211	3212	3213	3214	3215	3216	3217	3218	3219	3220	3221	3222	3223	3224	3225	3226	3227	3228	3229	3230	3231	3232	3233	3234	3235	3236	3237	3238	3239	3240	3241	3242	3243	3244	3245	3246	3247	3248	3249	3250	3251	3252	3253	3254	3255	3256	3257	3258	3259	3260	3261	3262	3263	3264	3265	3266	3267	3268	3269	3270	3271	3272	3273	3274	3275	3276	3277	3278	3279	3280	3281	3282	3283	3284	3285	3286	3287	3288	3289	3290	3291	3292

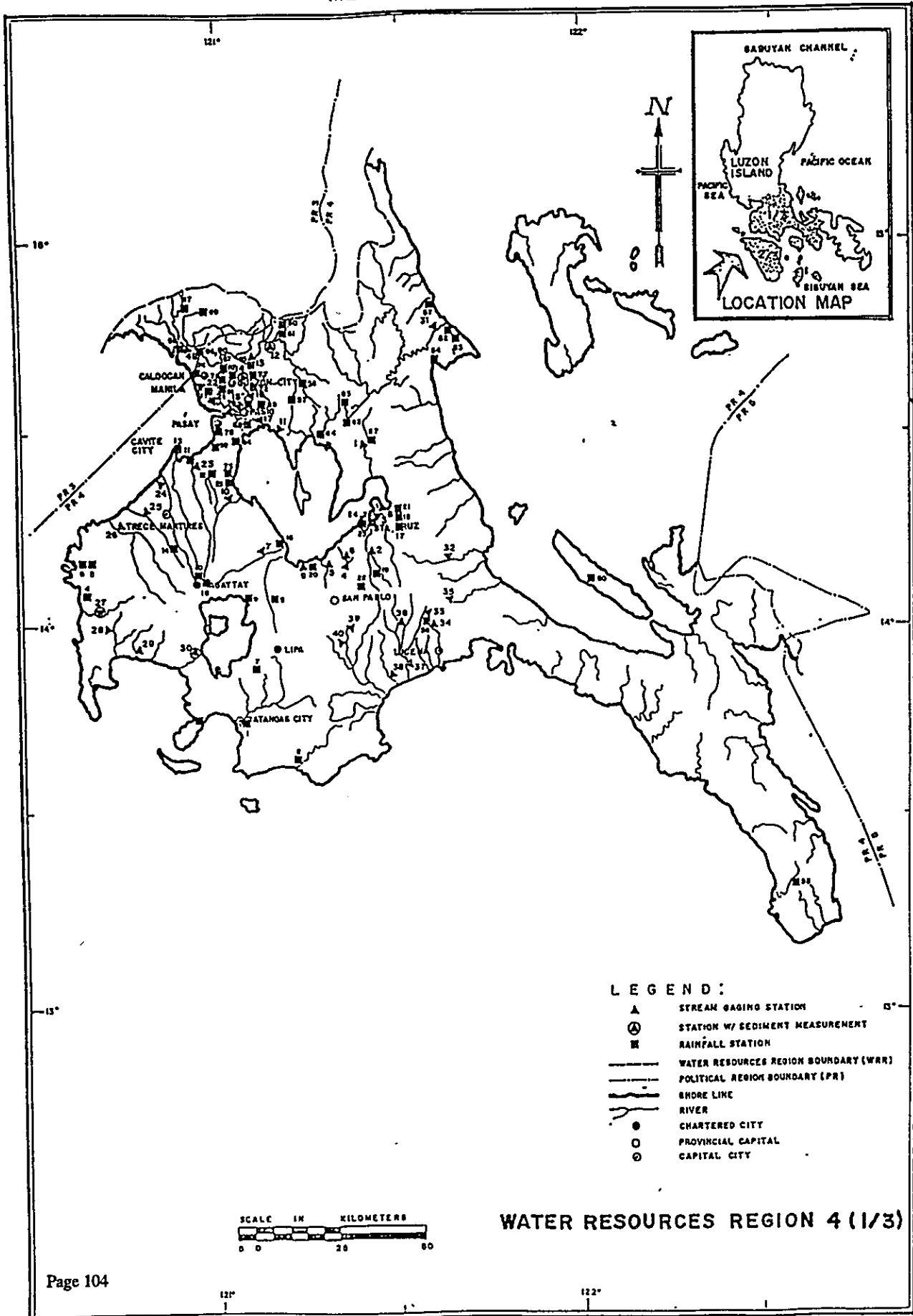
Figure III.3.2 Data Availability of Rainfall Station in Region III (3/4)
REGION 3 - CENTRAL LUZON

STATION NO.	STATION/LOCATIONS	COORDINATES		ALTITUDE (METERS)	ELEVATION (M)	BY	TYPE	PERIOD																																																																																																																																																																																																																																																																																																																																																																																																																																																																																																																																																																																																																																																																																																																																																																																																																																																																																																																																																																																																																																																																																																																																																																																																																																																																																																																																																																																																
		LAT.	LONG.					1961	1962	1963	1964	1965	1966	1967	1968	1969	1970	1971	1972	1973	1974	1975	1976	1977	1978	1979	1980	1981	1982	1983	1984	1985	1986	1987	1988	1989	1990	1991	1992	1993	1994	1995	1996	1997	1998	1999	2000	2001	2002	2003	2004	2005	2006	2007	2008	2009	2010	2011	2012	2013	2014	2015	2016	2017	2018	2019	2020	2021	2022	2023	2024	2025	2026	2027	2028	2029	2030	2031	2032	2033	2034	2035	2036	2037	2038	2039	2040	2041	2042	2043	2044	2045	2046	2047	2048	2049	2050	2051	2052	2053	2054	2055	2056	2057	2058	2059	2060	2061	2062	2063	2064	2065	2066	2067	2068	2069	2070	2071	2072	2073	2074	2075	2076	2077	2078	2079	2080	2081	2082	2083	2084	2085	2086	2087	2088	2089	2090	2091	2092	2093	2094	2095	2096	2097	2098	2099	2100	2101	2102	2103	2104	2105	2106	2107	2108	2109	2110	2111	2112	2113	2114	2115	2116	2117	2118	2119	2120	2121	2122	2123	2124	2125	2126	2127	2128	2129	2130	2131	2132	2133	2134	2135	2136	2137	2138	2139	2140	2141	2142	2143	2144	2145	2146	2147	2148	2149	2150	2151	2152	2153	2154	2155	2156	2157	2158	2159	2160	2161	2162	2163	2164	2165	2166	2167	2168	2169	2170	2171	2172	2173	2174	2175	2176	2177	2178	2179	2180	2181	2182	2183	2184	2185	2186	2187	2188	2189	2190	2191	2192	2193	2194	2195	2196	2197	2198	2199	2200	2201	2202	2203	2204	2205	2206	2207	2208	2209	2210	2211	2212	2213	2214	2215	2216	2217	2218	2219	2220	2221	2222	2223	2224	2225	2226	2227	2228	2229	2230	2231	2232	2233	2234	2235	2236	2237	2238	2239	2240	2241	2242	2243	2244	2245	2246	2247	2248	2249	2250	2251	2252	2253	2254	2255	2256	2257	2258	2259	2260	2261	2262	2263	2264	2265	2266	2267	2268	2269	2270	2271	2272	2273	2274	2275	2276	2277	2278	2279	2280	2281	2282	2283	2284	2285	2286	2287	2288	2289	2290	2291	2292	2293	2294	2295	2296	2297	2298	2299	2300	2301	2302	2303	2304	2305	2306	2307	2308	2309	2310	2311	2312	2313	2314	2315	2316	2317	2318	2319	2320	2321	2322	2323	2324	2325	2326	2327	2328	2329	2330	2331	2332	2333	2334	2335	2336	2337	2338	2339	2340	2341	2342	2343	2344	2345	2346	2347	2348	2349	2350	2351	2352	2353	2354	2355	2356	2357	2358	2359	2360	2361	2362	2363	2364	2365	2366	2367	2368	2369	2370	2371	2372	2373	2374	2375	2376	2377	2378	2379	2380	2381	2382	2383	2384	2385	2386	2387	2388	2389	2390	2391	2392	2393	2394	2395	2396	2397	2398	2399	2400	2401	2402	2403	2404	2405	2406	2407	2408	2409	2410	2411	2412	2413	2414	2415	2416	2417	2418	2419	2420	2421	2422	2423	2424	2425	2426	2427	2428	2429	2430	2431	2432	2433	2434	2435	2436	2437	2438	2439	2440	2441	2442	2443	2444	2445	2446	2447	2448	2449	2450	2451	2452	2453	2454	2455	2456	2457	2458	2459	2460	2461	2462	2463	2464	2465	2466	2467	2468	2469	2470	2471	2472	2473	2474	2475	2476	2477	2478	2479	2480	2481	2482	2483	2484	2485	2486	2487	2488	2489	2490	2491	2492	2493	2494	2495	2496	2497	2498	2499	2500	2501	2502	2503	2504	2505	2506	2507	2508	2509	2510	2511	2512	2513	2514	2515	2516	2517	2518	2519	2520	2521	2522	2523	2524	2525	2526	2527	2528	2529	2530	2531	2532	2533	2534	2535	2536	2537	2538	2539	2540	2541	2542	2543	2544	2545	2546	2547	2548	2549	2550	2551	2552	2553	2554	2555	2556	2557	2558	2559	2560	2561	2562	2563	2564	2565	2566	2567	2568	2569	2570	2571	2572	2573	2574	2575	2576	2577	2578	2579	2580	2581	2582	2583	2584	2585	2586	2587	2588	2589	2590	2591	2592	2593	2594	2595	2596	2597	2598	2599	2600	2601	2602	2603	2604	2605	2606	2607	2608	2609	2610	2611	2612	2613	2614	2615	2616	2617	2618	2619	2620	2621	2622	2623	2624	2625	2626	2627	2628	2629	2630	2631	2632	2633	2634	2635	2636	2637	2638	2639	2640	2641	2642	2643	2644	2645	2646	2647	2648	2649	2650	2651	2652	2653	2654	2655	2656	2657	2658	2659	2660	2661	2662	2663	2664	2665	2666	2667	2668	2669	2670	2671	2672	2673	2674	2675	2676	2677	2678	2679	2680	2681	2682	2683	2684	2685	2686	2687	2688	2689	2690	2691	2692	2693	2694	2695	2696	2697	2698	2699	2700	2701	2702	2703	2704	2705	2706	2707	2708	2709	2710	2711	2712	2713	2714	2715	2716	2717	2718	2719	2720	2721	2722	2723	2724	2725	2726	2727	2728	2729	2730	2731	2732	2733	2734	2735	2736	2737	2738	2739	2740	2741	2742	2743	2744	2745	2746	2747	2748	2749	2750	2751	2752	2753	2754	2755	2756	2757	2758	2759	2760	2761	2762	2763	2764	2765	2766	2767	2768	2769	2770	2771	2772	2773	2774	2775	2776	2777	2778	2779	2780	2781	2782	2783	2784	2785	2786	2787	2788	2789	2790	2791	2792	2793	2794	2795	2796	2797	2798	2799	2800	2801	2802	2803	2804	2805	2806	2807	2808	2809	2810	2811	2812	2813	2814	2815	2816	2817	2818	2819	2820	2821	2822	2823	2824	2825	2826	2827	2828	2829	2830	2831	2832	2833	2834	2835	2836	2837	2838	2839	2840	2841	2842	2843	2844	2845	2846	2847	2848	2849	2850	2851	2852	2853	2854	2855	2856	2857	2858	2859	2860	2861	2862	2863	2864	2865	2866	2867	2868	2869	2870	2871	2872	2873	2874	2875	2876	2877	2878	2879	2880	2881	2882	2883	2884	2885	2886	2887	2888	2889	2890	2891	2892	2893	2894	2895	2896	2897	2898	2899	2900	2901	2902	2903	2904	2905	2906	2907	2908	2909	2910	2911	2912	2913	2914	2915	2916	2917	2918	2919	2920	2921	2922	2923	2924	2925	2926	2927	2928	2929	2930	2931	2932	2933	2934	2935	2936	2937	2938	2939	2940	2941	2942	2943	2944	2945	2946	2947	2948	2949	2950	2951	2952	2953	2954	2955	2956	2957	2958	2959	2960	2961	2962	2963	2964	2965	2966	2967	2968	2969	2970	2971	2972	2973	2974	2975	2976	2977	2978	2979	2980	2981	2982	2983	2984	2985	2986	2987	2988	2989	2990	2991	2992	2993	2994	2995	2996	2997	2998	2999	3000	3001	3002	3003	3004	3005	3006	3007	3008	3009	3010	3011	3012	3013	3014	3015	3016	3017	3018	3019	3020	3021	3022	3023	3024	3025	3026	3027	3028	3029	3030	3031	3032	3033	3034	3035	3036	3037	3038	3039	3040	3041	3042	3043	3044	3045	3046	3047	3048	3049	3050	3051	3052	3053	3054	3055	3056	3057	3058	3059	3060	3061	3062	3063	3064	3065	3066	3067	3068	3069	3070	3071	3072	3073	3074	3075	3076	3077	3078	3079	3080	3081	3082	3083	3084	3085	3086	3087	3088	3089	3090	3091	3092	3093	3094	3095	3096	3097	3098	3099	3100	3101	3102	3103	3104	3105	3106	3107	3108	3109	3110	3111	3112	3113	3114	3115	3116	3117	3118	3119	3120	3121	3122	3123	3124	3125	3126	3127	3128	3129	3130	3131	3132	3133	3134	3135	3136	3137	3138	3139	3140	3141	3142	3143	3144	3145	3146	3147	3148	3149	3150	3151	3152	3153	3154	3155	3156	3157	3158	3159	3160	3161	3162	3163	3164	3165	3166	3167	3168	3169	3170	3171	3172	3173	3174	3175	3176	3177	3178	3179	3180	3181	3182	3183	3184	3185	3186	3187	3188	3189	3190	3191	3192	3193	3194	3195	3196	3197	3198	3199	3200	3201	3202	3203	3204	3205	3206	3207	3208	3209	3210	3211	3212	3213	3214	3215	3216	3217	3218	3219	3220	3221	3222	3223	3224	3225	3226	3227	3228	3229	3230	3231	3232	3233	3234	3235	3236	3237	3238	3239	3240	3241	3242	3243	3244	3245	3246	3247	3248	3249	3250	3251	3252	3253	3254	3255	3256	3257	3258	3259	3260	3261	3262	3263	3264	3265	3266	3267	3268	3269	3270	3271	3272	3273	3274	3275	3276	3277	3278	3279	3280	3281	3282	3283	3284	3285	3286	3287	3288	3289	3290	3291	3292	3293	3294	3295	3296	3297	3298	3299	3300	3301	3302	3303	3304	3305

Figure III.3.2 Data Availability of Rainfall Station in Region III (4/4)
REGION 3 - CENTRAL LUZON

STATION NO.	STATION/LOCATIONS	COORDINATES		ALTITUDE	MAINTAINED BY	TYPE
		LAT.	LONG			
101.	Alcala, Pangasinan	15 57	120 31		-do-	-do-
102.	Subayan, Pangasinan	15 54	120 40		-do-	CR
103.	Sanaraya, Pangasinan	15 48	120 37		-do-	HYDRO
104.	Itaniam, Pangasinan	16 07	120 37		-do-	CR
105.	Belusa, Pangasinan	16 23	119 54		-do-	SYNOF, AGRO
106.	Dagupan City	16 07	120 20		PAGASA	SYNOF, HYDRO
107.	Comol, Pangasinan	16 01	119 57		-do-	HYDRO
108.	Belusa, Pangasinan	15 59	119 54		-do-	-do-
109.	Lubitan, Pangasinan	16 02	120 07		-do-	-do-
110.	Lingayen, Pangasinan	16 02	120 14		-do-	-do-
111.	Mahat, Pangasinan	16 04	119 56		-do-	CR
112.	Mitupog, Pangasinan	15 57	120 51		-do-	R, HYDRO
113.	Mangalita, Pangasinan	15 22	120 21		-do-	AGRO
114.	Mangarara, Pangasinan	15 47	120 16		-do-	HYDRO
115.	Rosales, Pangasinan	15 54	120 37		-do-	AGRO
116.	San Manuel, Pangasinan	16 04	120 40		NPC	HYDRO
117.	San Nicolas, Pangasinan	16 02	120 46		PAGASA	-do-
118.	San Carlos, Pangasinan	15 57	120 47		-do-	-do-
119.	San Barbara, Pangasinan	16 00	120 24		-do-	-do-
120.	San Maria, Pangasinan	15 59	120 42		-do-	-do-
121.	Sual, Pangasinan	16 04	120 07		-do-	AGRO
122.	Urdaneta, Pangasinan	15 56	120 50		-do-	HYDRO
123.	Urdaneta, Pangasinan	15 59	120 34		-do-	-do-
124.	Urdaneta, Pangasinan	15 59	120 35		-do-	AGRO
125.	Villasis, Pangasinan	15 54	120 35		-do-	HYDRO
126.	Abubakar, Benguet	16 29	120 45		NPC	CC
127.	Baloc Baloc, Benguet	16 37	120 50		-do-	CR
128.	Kanow, Bala, Benguet	16 30	120 50		-do-	-do-
129.	Baloch, Benguet	16 22	120 40		-do-	-do-
130.	Mankayan, Benguet	16 47	120 50		-do-	CR
131.	Idem, Quana	15 46	121 37		PAGASA	SYNOF, VSS
132.	Catagan, Quana	16 17	121 07		-do-	HYDRO
133.	Banga, Benguet	16 24	120 44		N/A	CR

METEO - HYDROLOGIC STATIONS

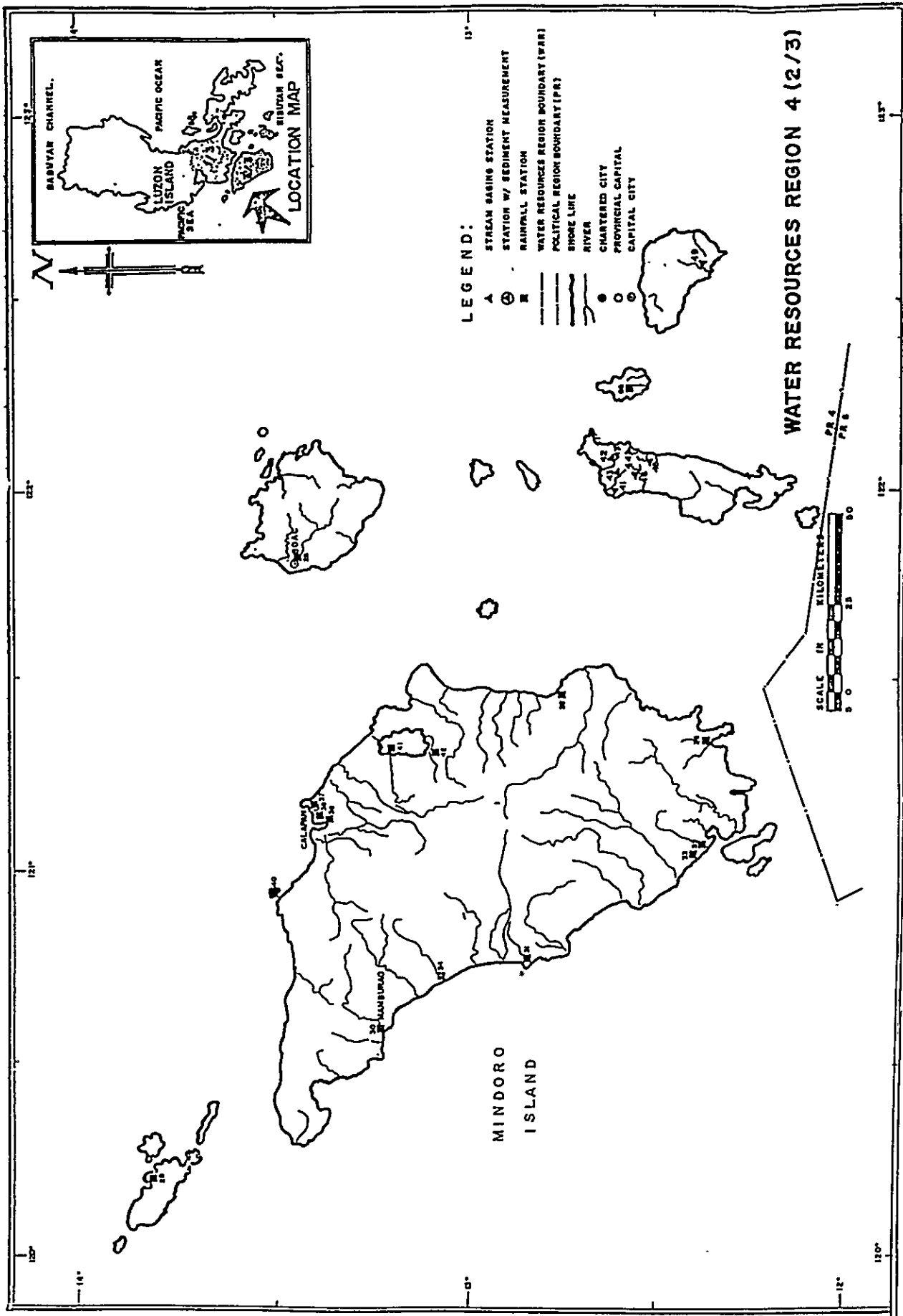


- LEGEND:**
- ▲ STREAM GAGING STATION
 - ⊕ STATION W/ SEDIMENT MEASUREMENT
 - RAINFALL STATION
 - WATER RESOURCES REGION BOUNDARY (WRR)
 - POLITICAL REGION BOUNDARY (PR)
 - SHORE LINE
 - RIVER
 - CHARTERED CITY
 - PROVINCIAL CAPITAL
 - ⊙ CAPITAL CITY

SCALE IN KILOMETERS
 0 20 40 60

WATER RESOURCES REGION 4 (I/3)

METEO - HYDROLOGIC STATIONS



METEO-HYDROLOGIC STATIONS

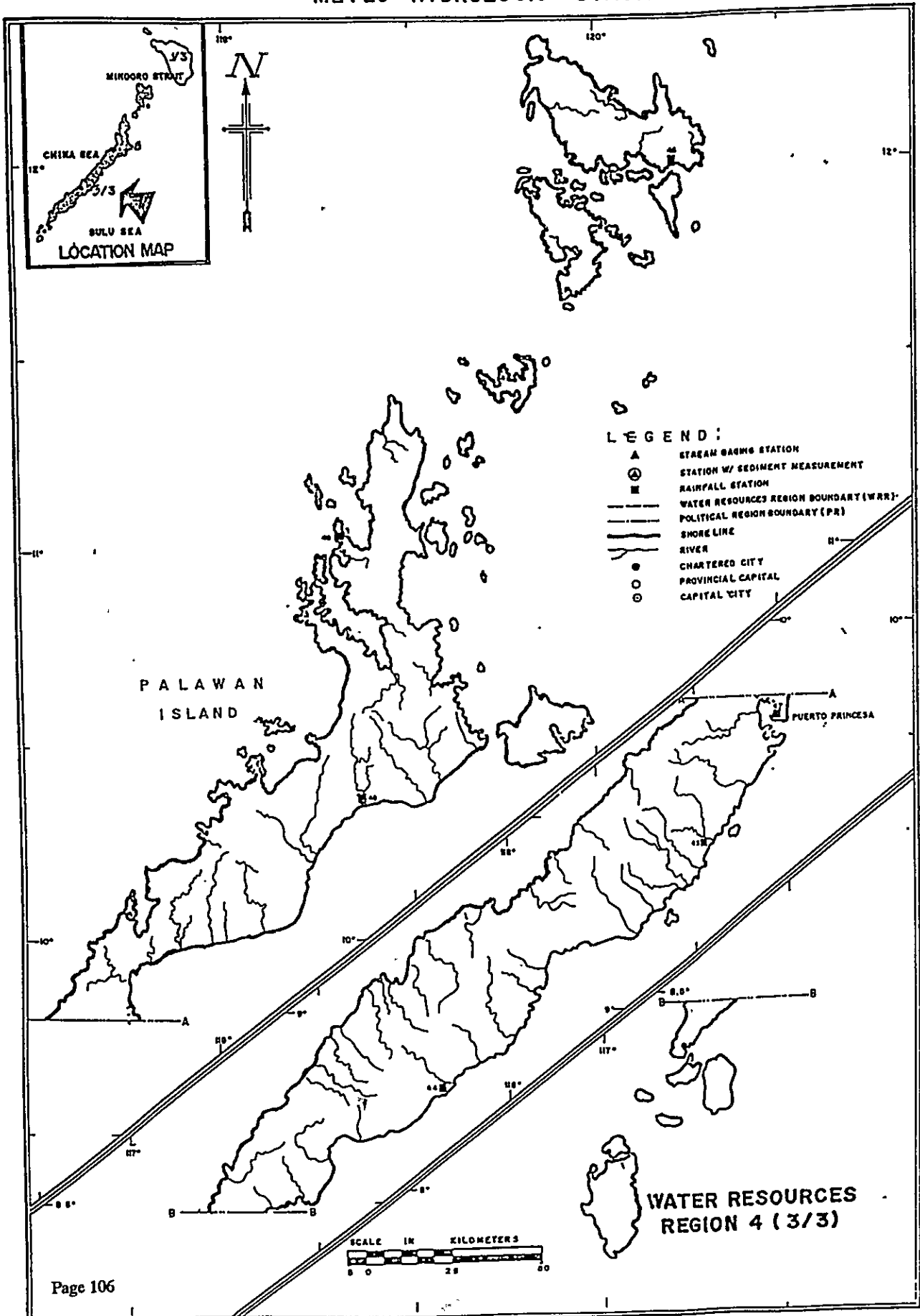


Figure III.4.2 Data Availability of Rainfall Station in Region IV (1/3)
REGION 4 - SOUTHERN TAGALOG

STATION NO.	STATION LOCATIONS	COORDINATES		ALTITUDE E.L.M.	MANTANSED		TYPS
		LAT.	LONG.		BY	BY	
1.	Lumb, Bataan	17° 47' 11" N	121° 04'		PAGASA		OR
2.	Laba, Bataan	17° 39' 11" N	121° 17'		-do-		-do-
3.	Alibali, Bataan	17° 47' 12" N	120° 27'		-do-		-do-
4.	Nangha, Bataan	17° 04' 12" N	120° 36'		-do-	OR, VSI	-do-
5.	Baybayan, Marikina, Riz.	16° 10' 12" N	120° 36'		-do-		CR
6.	Paling-Ting, Marikina	16° 10' 12" N	120° 37'		-do-		-do-
7.	San Jose, Marikina	17° 27' 12" N	121° 06'		-do-		HYDRO
8.	Tanawan, Marikina	16° 07' 11" N	121° 09'		-do-		-do-
9.	Abubakar, Tanawan, Riz.	16° 07' 11" N	121° 04'	18	-do-	ST/OP, SIGSIBO	-do-
10.	Arzobispo, Cavite	14° 08' 12" N	120° 27'		-do-		OR
11.	Mabini, Bataan, Cavite	14° 27' 12" N	120° 36'		-do-		-do-
12.	Arzobispo, Cavite	14° 27' 12" N	120° 36'		-do-		CC
13.	Sanday Point, Cavite	14° 30' 12" N	120° 35'	3	-do-	SYNOP, RADA	-do-
14.	Isiding, Cavite	14° 12' 12" N	120° 27'		-do-		HYDRO
15.	Trepano City	14° 07' 12" N	120° 26'		-do-		OR
16.	Calamba, Laguna	14° 14' 12" N	121° 10'		-do-		-do-
17.	Luzon, Cavite, Laguna	14° 15' 12" N	121° 30'		NPC		CR
18.	Francis, Cavite, Laguna	14° 16' 12" N	121° 30'		PAGASA		-do-
19.	Lilim, Laguna	14° 08' 12" N	121° 26'		-do-		HYDRO
20.	San Rafael, Laguna	14° 10' 12" N	121° 15'		-do-		CC, AGRO
21.	San Rafael, Laguna	14° 17' 12" N	121° 30'		-do-		OR
22.	Biak, Laguna	14° 07' 12" N	121° 23'		-do-		-do-
23.	San Rafael, Laguna	14° 22' 12" N	121° 07'		-do-		-do-
24.	San Jose, Laguna	14° 17' 12" N	121° 25'		-do-		SYNOP, OR
25.	Gen. R. C. C. Laguna	14° 18' 12" N	121° 25'		NIA		HYDRO
26.	San Jose, Cavite, Laguna	14° 17' 12" N	121° 25'		-do-		-do-
27.	San Mateo, Laguna	14° 28' 12" N	121° 25'		PAGASA		-do-
28.	San Mateo, Laguna	13° 27' 12" N	121° 25'		-do-		-do-
29.	Lubang, Occidental Mind.	13° 49' 12" N	120° 12'		-do-		-do-
30.	Manila, Occidental Mind.	13° 14' 12" N	120° 36'		NIA		HYDRO
31.	San Jose, Occ. Mind.	13° 20' 12" N	120° 46'		-do-		-do-
32.	San Jose, Occ. Mind.	13° 21' 12" N	121° 04'		PAGASA		OR
33.	La Cueva, San Jose, Occ.	13° 26' 12" N	121° 07'		NIA		HYDRO
34.	San Jose, Occ. Mind.	13° 04' 12" N	120° 47'		PAGASA		CC
35.	San Jose, Occ. Mind.	13° 49' 12" N	121° 29'		NIA		HYDRO
36.	San Jose, Occ. Mind.	13° 20' 12" N	121° 21'		NIA		HYDRO

Figure III.4.2 Data Availability of Rainfall Station in Region IV (2/3)
REGION 4 - SOUTHERN TAGALOG

STATION NO.	STATION LOCATIONS	COORDINATES		ALTITUDE	MAINTAINED BY	TYPE
		LAT	LONG			
37.	Calapan, Oriental Mis.	13° 37' 11"	121° 09'	39	PAGASA	-de-
38	Itanog, Calapan, Oriental Mis	13° 23' 11"	121° 09'		NIA	HYDRO
39.	Casubang I, Calapan, Oriental Mis	13° 22' 11"	121° 08'		-de-	-de-
40.	Panabo Gains, Oriental Mis	13° 30'	120° 57'		PAGASA	OK
41.	Milim, Visayas, Oriental Mis	13° 11' 11"	121° 19'		NIA	HYDRO
42.	Milim Abasa, Visayas, Oriental Mis	13° 05'	121° 17'		-de-	-de-
43.	Abocin, Palawan	9° 32' 11"	118° 35'		PAGASA	AGRO
44.	Broad's Point, Palawan	8° 48'	117° 50'		-de-	-de-
45	Coron, Palawan	12° 00'	120° 12'	13	-de-	SYNOP, PNO
46.	Coron, Palawan	10° 51'	121° 02'	3	-de-	VSS SYNOP, PNO
47.	Puerto Princesa, Palawan	9° 43'	118° 44'	14	-de-	VSS SYNOP, W R, PNO, VSS
48.	Busu, Palawan	10° 13'	118° 21'		-de-	OK
49.	Spradley, Palawan	11° 00'	114° 17'		-de-	SYNOP
50.	Alibon, Quezon	14° 05'	122° 01'	4	-de-	SYNOP, VSS
51.	General Nakas, Quezon	14° 26'	121° 21'		-de-	HYDRO
52.	Itanog, Quezon	14° 45'	121° 37'	5	-de-	OK SYNOP
53	Ablerin, Ilocos, Quezon	14° 44'	121° 41'		-de-	HYDRO
54.	Isid 1, 2, 3, Quezon	14° 41'	121° 36'		-de-	OK, HYDRO
55.	San Francisco, Quezon	13° 21'	123° 31'	2	-de-	AGRO SYNOP, VSS
56.	Tapanos, Quezon	14° 02'	121° 35'	17	-de-	HYDRO, PNO SYNOP, PNO
57.	Antipala, Rizal	14° 35'	121° 13'		-de-	VSS, HYDRO
58.	Panao, Antipala Rizal	14° 34'	121° 14'		-de-	OK, HYDRO
59.	Colaba, Rizal	14° 32'	121° 07'		-de-	OK
60.	Marabul-Manabul, Rizal	14° 47'	121° 11'		-de-	-de-
61.	Talbot, Marabul, Rizal	14° 45'	121° 11'		-de-	-de-
62.	SP4 Cuyabney, Tamarog, Rizal	14° 32'	121° 21'		-de-	-de-

Figure III.4.2 Data Availability of Rainfall Station in Region IV (3/3)
REGION 4 - SOUTHERN TAGALOG

STATION NO.	STATION LOCATIONS	COORDINATES		ALTITUDE (M)	E. - M.	BY	TYPE
		LAT	LONG				
63	St. Cyprian, Tuguegarao	14° 37' 11" N	121° 21' 21" E				AGRO, HYDRO
64	San Jose, Tuguegarao	14° 36' 11" N	121° 17' 00" E				AGRO
65	Occidental Blvd. Sta. Maritima, Rizal	14° 47' 11" N	121° 05' 00" E				OR
66	San Jose, Tuguegarao	14° 37' 11" N	121° 17' 00" E				SYNCF, VES
67	Balibisan, Cainta City	14° 49' 11" N	121° 31' 00" E				FAO
68	Cainta, Cainta City	14° 44' 11" N	121° 02' 00" E				OR
69	Las Pinas, Marikina	14° 29' 11" N	120° 57' 00" E				OR
70	San Jose, Tuguegarao	14° 37' 11" N	121° 17' 00" E	6			SYNCF, FAO
71	San Jose, Tuguegarao	14° 37' 11" N	121° 17' 00" E				HYDRO
72	Marikina, Marikina	14° 37' 11" N	121° 05' 00" E				OR
73	Marikina, Marikina	14° 37' 11" N	121° 05' 00" E				OR
74	Marikina, Marikina	14° 37' 11" N	121° 05' 00" E				OR, VES
75	M.A.A., Pasig City	14° 31' 11" N	121° 07' 00" E	10			SYNCF, HYDRO
76	Palig, Marikina	14° 34' 11" N	121° 05' 00" E				OR
77	Palig, Marikina	14° 34' 11" N	121° 05' 00" E				CC
78	Palig, Marikina	14° 34' 11" N	121° 05' 00" E				PERMIO
79	Palig, Marikina	14° 34' 11" N	121° 05' 00" E				OR
80	Palig, Marikina	14° 34' 11" N	121° 05' 00" E				OR
81	Palig, Marikina	14° 34' 11" N	121° 05' 00" E				OR
82	Palig, Marikina	14° 34' 11" N	121° 05' 00" E				SYNCF, HYDRO
83	Palig, Marikina	14° 34' 11" N	121° 05' 00" E				CC, HYDRO
84	Palig, Marikina	14° 34' 11" N	121° 05' 00" E				OR
85	Palig, Marikina	14° 34' 11" N	121° 05' 00" E				OR
86	Palig, Marikina	14° 34' 11" N	121° 05' 00" E				OR
87	Palig, Marikina	14° 34' 11" N	121° 05' 00" E				OR, HYDRO
88	Palig, Marikina	14° 34' 11" N	121° 05' 00" E				OR
89	Palig, Marikina	14° 34' 11" N	121° 05' 00" E				OR
90	Palig, Marikina	14° 34' 11" N	121° 05' 00" E				OR

Figure III.4.3. Data Availability of Streamflow Station in Region IV (2/4)
REGION 4 - SOUTHERN TAGALOG

STATION NO.	RIVERS/LOCATIONS	COORDINATES		DRAINAGE AREA SQ.KM.	MAINTAINED BY	TYPE	PERIOD OF RECORD																												REMARKS																																																																																																																																																																																																																																																																																																																																																																																																																																																																																																																																																																																																																																																																																																																																																																																																																																																																																																																																																																																																																																																																																																																																																																																																																																																																																																																																																																			
		LAT.	LONG.				1961	1962	1963	1964	1965	1966	1967	1968	1969	1970	1971	1972	1973	1974	1975	1976	1977	1978	1979	1980	1981	1982	1983	1984	1985	1986	1987	1988		1989	1990	1991	1992	1993	1994	1995	1996	1997	1998	1999	2000	2001	2002	2003	2004	2005	2006	2007	2008	2009	2010	2011	2012	2013	2014	2015	2016	2017	2018	2019	2020	2021	2022	2023	2024	2025	2026	2027	2028	2029	2030	2031	2032	2033	2034	2035	2036	2037	2038	2039	2040	2041	2042	2043	2044	2045	2046	2047	2048	2049	2050	2051	2052	2053	2054	2055	2056	2057	2058	2059	2060	2061	2062	2063	2064	2065	2066	2067	2068	2069	2070	2071	2072	2073	2074	2075	2076	2077	2078	2079	2080	2081	2082	2083	2084	2085	2086	2087	2088	2089	2090	2091	2092	2093	2094	2095	2096	2097	2098	2099	2100	2101	2102	2103	2104	2105	2106	2107	2108	2109	2110	2111	2112	2113	2114	2115	2116	2117	2118	2119	2120	2121	2122	2123	2124	2125	2126	2127	2128	2129	2130	2131	2132	2133	2134	2135	2136	2137	2138	2139	2140	2141	2142	2143	2144	2145	2146	2147	2148	2149	2150	2151	2152	2153	2154	2155	2156	2157	2158	2159	2160	2161	2162	2163	2164	2165	2166	2167	2168	2169	2170	2171	2172	2173	2174	2175	2176	2177	2178	2179	2180	2181	2182	2183	2184	2185	2186	2187	2188	2189	2190	2191	2192	2193	2194	2195	2196	2197	2198	2199	2200	2201	2202	2203	2204	2205	2206	2207	2208	2209	2210	2211	2212	2213	2214	2215	2216	2217	2218	2219	2220	2221	2222	2223	2224	2225	2226	2227	2228	2229	2230	2231	2232	2233	2234	2235	2236	2237	2238	2239	2240	2241	2242	2243	2244	2245	2246	2247	2248	2249	2250	2251	2252	2253	2254	2255	2256	2257	2258	2259	2260	2261	2262	2263	2264	2265	2266	2267	2268	2269	2270	2271	2272	2273	2274	2275	2276	2277	2278	2279	2280	2281	2282	2283	2284	2285	2286	2287	2288	2289	2290	2291	2292	2293	2294	2295	2296	2297	2298	2299	2300	2301	2302	2303	2304	2305	2306	2307	2308	2309	2310	2311	2312	2313	2314	2315	2316	2317	2318	2319	2320	2321	2322	2323	2324	2325	2326	2327	2328	2329	2330	2331	2332	2333	2334	2335	2336	2337	2338	2339	2340	2341	2342	2343	2344	2345	2346	2347	2348	2349	2350	2351	2352	2353	2354	2355	2356	2357	2358	2359	2360	2361	2362	2363	2364	2365	2366	2367	2368	2369	2370	2371	2372	2373	2374	2375	2376	2377	2378	2379	2380	2381	2382	2383	2384	2385	2386	2387	2388	2389	2390	2391	2392	2393	2394	2395	2396	2397	2398	2399	2400	2401	2402	2403	2404	2405	2406	2407	2408	2409	2410	2411	2412	2413	2414	2415	2416	2417	2418	2419	2420	2421	2422	2423	2424	2425	2426	2427	2428	2429	2430	2431	2432	2433	2434	2435	2436	2437	2438	2439	2440	2441	2442	2443	2444	2445	2446	2447	2448	2449	2450	2451	2452	2453	2454	2455	2456	2457	2458	2459	2460	2461	2462	2463	2464	2465	2466	2467	2468	2469	2470	2471	2472	2473	2474	2475	2476	2477	2478	2479	2480	2481	2482	2483	2484	2485	2486	2487	2488	2489	2490	2491	2492	2493	2494	2495	2496	2497	2498	2499	2500	2501	2502	2503	2504	2505	2506	2507	2508	2509	2510	2511	2512	2513	2514	2515	2516	2517	2518	2519	2520	2521	2522	2523	2524	2525	2526	2527	2528	2529	2530	2531	2532	2533	2534	2535	2536	2537	2538	2539	2540	2541	2542	2543	2544	2545	2546	2547	2548	2549	2550	2551	2552	2553	2554	2555	2556	2557	2558	2559	2560	2561	2562	2563	2564	2565	2566	2567	2568	2569	2570	2571	2572	2573	2574	2575	2576	2577	2578	2579	2580	2581	2582	2583	2584	2585	2586	2587	2588	2589	2590	2591	2592	2593	2594	2595	2596	2597	2598	2599	2600	2601	2602	2603	2604	2605	2606	2607	2608	2609	2610	2611	2612	2613	2614	2615	2616	2617	2618	2619	2620	2621	2622	2623	2624	2625	2626	2627	2628	2629	2630	2631	2632	2633	2634	2635	2636	2637	2638	2639	2640	2641	2642	2643	2644	2645	2646	2647	2648	2649	2650	2651	2652	2653	2654	2655	2656	2657	2658	2659	2660	2661	2662	2663	2664	2665	2666	2667	2668	2669	2670	2671	2672	2673	2674	2675	2676	2677	2678	2679	2680	2681	2682	2683	2684	2685	2686	2687	2688	2689	2690	2691	2692	2693	2694	2695	2696	2697	2698	2699	2700	2701	2702	2703	2704	2705	2706	2707	2708	2709	2710	2711	2712	2713	2714	2715	2716	2717	2718	2719	2720	2721	2722	2723	2724	2725	2726	2727	2728	2729	2730	2731	2732	2733	2734	2735	2736	2737	2738	2739	2740	2741	2742	2743	2744	2745	2746	2747	2748	2749	2750	2751	2752	2753	2754	2755	2756	2757	2758	2759	2760	2761	2762	2763	2764	2765	2766	2767	2768	2769	2770	2771	2772	2773	2774	2775	2776	2777	2778	2779	2780	2781	2782	2783	2784	2785	2786	2787	2788	2789	2790	2791	2792	2793	2794	2795	2796	2797	2798	2799	2800	2801	2802	2803	2804	2805	2806	2807	2808	2809	2810	2811	2812	2813	2814	2815	2816	2817	2818	2819	2820	2821	2822	2823	2824	2825	2826	2827	2828	2829	2830	2831	2832	2833	2834	2835	2836	2837	2838	2839	2840	2841	2842	2843	2844	2845	2846	2847	2848	2849	2850	2851	2852	2853	2854	2855	2856	2857	2858	2859	2860	2861	2862	2863	2864	2865	2866	2867	2868	2869	2870	2871	2872	2873	2874	2875	2876	2877	2878	2879	2880	2881	2882	2883	2884	2885	2886	2887	2888	2889	2890	2891	2892	2893	2894	2895	2896	2897	2898	2899	2900	2901	2902	2903	2904	2905	2906	2907	2908	2909	2910	2911	2912	2913	2914	2915	2916	2917	2918	2919	2920	2921	2922	2923	2924	2925	2926	2927	2928	2929	2930	2931	2932	2933	2934	2935	2936	2937	2938	2939	2940	2941	2942	2943	2944	2945	2946	2947	2948	2949	2950	2951	2952	2953	2954	2955	2956	2957	2958	2959	2960	2961	2962	2963	2964	2965	2966	2967	2968	2969	2970	2971	2972	2973	2974	2975	2976	2977	2978	2979	2980	2981	2982	2983	2984	2985	2986	2987	2988	2989	2990	2991	2992	2993	2994	2995	2996	2997	2998	2999	3000	3001	3002	3003	3004	3005	3006	3007	3008	3009	3010	3011	3012	3013	3014	3015	3016	3017	3018	3019	3020	3021	3022	3023	3024	3025	3026	3027	3028	3029	3030	3031	3032	3033	3034	3035	3036	3037	3038	3039	3040	3041	3042	3043	3044	3045	3046	3047	3048	3049	3050	3051	3052	3053	3054	3055	3056	3057	3058	3059	3060	3061	3062	3063	3064	3065	3066	3067	3068	3069	3070	3071	3072	3073	3074	3075	3076	3077	3078	3079	3080	3081	3082	3083	3084	3085	3086	3087	3088	3089	3090	3091	3092	3093	3094	3095	3096	3097	3098	3099	3100	3101	3102	3103	3104	3105	3106	3107	3108	3109	3110	3111	3112	3113	3114	3115	3116	3117	3118	3119	3120	3121	3122	3123	3124	3125	3126	3127	3128	3129	3130	3131	3132	3133	3134	3135	3136	3137	3138	3139	3140	3141	3142	3143	3144	3145	3146	3147	3148	3149	3150	3151	3152	3153	3154	3155	3156	3157	3158	3159	3160	3161	3162	3163	3164	3165	3166	3167	3168	3169	3170	3171	3172	3173	3174	3175	3176	3177	3178	3179	3180	3181	3182	3183	3184	3185	3186	3187	3188	3189	3190	3191	3192	3193	3194	3195	3196	3197	3198	3199	3200	3201	3202	3203	3204	3205	3206	3207	3208	3209	3210	3211	3212	3213	3214	3215	3216	3217	3218	3219	3220	3221	3222	3223	3224	3225	3226	3227	3228	3229	3230	3231	3232	3233	3234	3235	3236	3237	3238	3239	3240	3241	3242	3243	3244	3245	3246	3247	3248	3249	3250	3251	3252	3253	3254	3255	3256	3257	3258	3259	3260	3261	3262	3263	3264	3265	3266	3267	3268	3269	3270	3271	3272	3273	3274	3275	3276	3277	3278	3279	3280	3281	3282	3283	3284	3285	3286	3287	3288	3289	3290	3291	3292	3293	3294	3295	3296	3297	3298	3299	3300	3301	3302	3303

METEO - HYDROLOGIC STATIONS

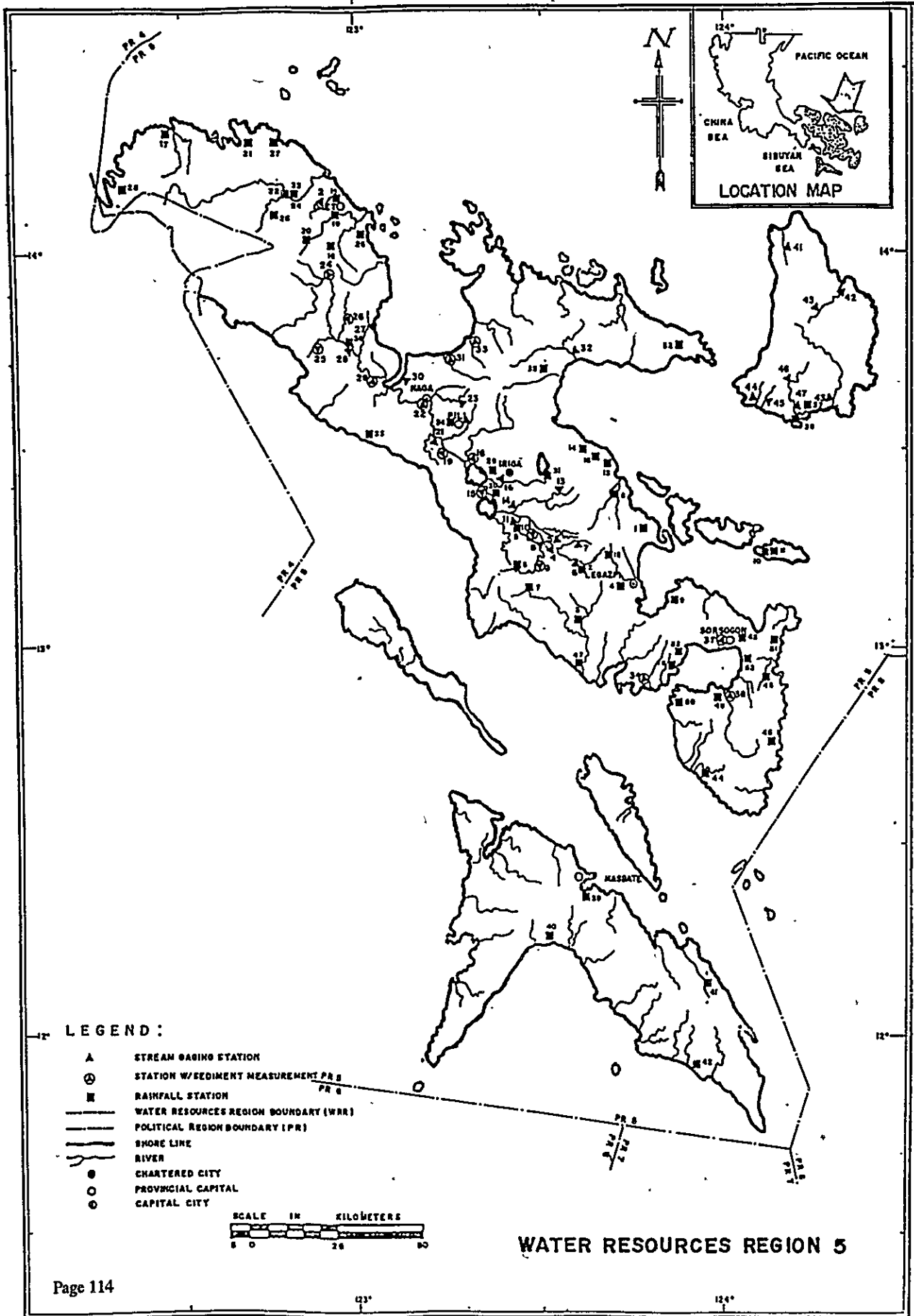


Figure III.5.2 Data Availability of Rainfall Station in Region V (1/2)

REGION 5 - BICOL

STATION NO	STATIONS/LOCATIONS	COORDINATES		ALTITUDE EL. - M	MAINTAINED BY	TYPE	P E R I O D O P E R E C O R D																																																																																																																																																																																																																																																																																																																																																																																																																																																																																																																																																																																																																																																																																																																																																																																																																																																																																																																																																																																																																																																																																																																																																																																																																																																																																																																																																																																										
		LAT.	LONG				1961	1962	1963	1964	1965	1966	1967	1968	1969	1970	1971	1972	1973	1974	1975	1976	1977	1978	1979	1980	1981	1982	1983	1984	1985	1986	1987	1988	1989	1990	1991	1992	1993	1994	1995	1996	1997	1998	1999	2000	2001	2002	2003	2004	2005	2006	2007	2008	2009	2010	2011	2012	2013	2014	2015	2016	2017	2018	2019	2020	2021	2022	2023	2024	2025	2026	2027	2028	2029	2030	2031	2032	2033	2034	2035	2036	2037	2038	2039	2040	2041	2042	2043	2044	2045	2046	2047	2048	2049	2050	2051	2052	2053	2054	2055	2056	2057	2058	2059	2060	2061	2062	2063	2064	2065	2066	2067	2068	2069	2070	2071	2072	2073	2074	2075	2076	2077	2078	2079	2080	2081	2082	2083	2084	2085	2086	2087	2088	2089	2090	2091	2092	2093	2094	2095	2096	2097	2098	2099	2100	2101	2102	2103	2104	2105	2106	2107	2108	2109	2110	2111	2112	2113	2114	2115	2116	2117	2118	2119	2120	2121	2122	2123	2124	2125	2126	2127	2128	2129	2130	2131	2132	2133	2134	2135	2136	2137	2138	2139	2140	2141	2142	2143	2144	2145	2146	2147	2148	2149	2150	2151	2152	2153	2154	2155	2156	2157	2158	2159	2160	2161	2162	2163	2164	2165	2166	2167	2168	2169	2170	2171	2172	2173	2174	2175	2176	2177	2178	2179	2180	2181	2182	2183	2184	2185	2186	2187	2188	2189	2190	2191	2192	2193	2194	2195	2196	2197	2198	2199	2200	2201	2202	2203	2204	2205	2206	2207	2208	2209	2210	2211	2212	2213	2214	2215	2216	2217	2218	2219	2220	2221	2222	2223	2224	2225	2226	2227	2228	2229	2230	2231	2232	2233	2234	2235	2236	2237	2238	2239	2240	2241	2242	2243	2244	2245	2246	2247	2248	2249	2250	2251	2252	2253	2254	2255	2256	2257	2258	2259	2260	2261	2262	2263	2264	2265	2266	2267	2268	2269	2270	2271	2272	2273	2274	2275	2276	2277	2278	2279	2280	2281	2282	2283	2284	2285	2286	2287	2288	2289	2290	2291	2292	2293	2294	2295	2296	2297	2298	2299	2300	2301	2302	2303	2304	2305	2306	2307	2308	2309	2310	2311	2312	2313	2314	2315	2316	2317	2318	2319	2320	2321	2322	2323	2324	2325	2326	2327	2328	2329	2330	2331	2332	2333	2334	2335	2336	2337	2338	2339	2340	2341	2342	2343	2344	2345	2346	2347	2348	2349	2350	2351	2352	2353	2354	2355	2356	2357	2358	2359	2360	2361	2362	2363	2364	2365	2366	2367	2368	2369	2370	2371	2372	2373	2374	2375	2376	2377	2378	2379	2380	2381	2382	2383	2384	2385	2386	2387	2388	2389	2390	2391	2392	2393	2394	2395	2396	2397	2398	2399	2400	2401	2402	2403	2404	2405	2406	2407	2408	2409	2410	2411	2412	2413	2414	2415	2416	2417	2418	2419	2420	2421	2422	2423	2424	2425	2426	2427	2428	2429	2430	2431	2432	2433	2434	2435	2436	2437	2438	2439	2440	2441	2442	2443	2444	2445	2446	2447	2448	2449	2450	2451	2452	2453	2454	2455	2456	2457	2458	2459	2460	2461	2462	2463	2464	2465	2466	2467	2468	2469	2470	2471	2472	2473	2474	2475	2476	2477	2478	2479	2480	2481	2482	2483	2484	2485	2486	2487	2488	2489	2490	2491	2492	2493	2494	2495	2496	2497	2498	2499	2500	2501	2502	2503	2504	2505	2506	2507	2508	2509	2510	2511	2512	2513	2514	2515	2516	2517	2518	2519	2520	2521	2522	2523	2524	2525	2526	2527	2528	2529	2530	2531	2532	2533	2534	2535	2536	2537	2538	2539	2540	2541	2542	2543	2544	2545	2546	2547	2548	2549	2550	2551	2552	2553	2554	2555	2556	2557	2558	2559	2560	2561	2562	2563	2564	2565	2566	2567	2568	2569	2570	2571	2572	2573	2574	2575	2576	2577	2578	2579	2580	2581	2582	2583	2584	2585	2586	2587	2588	2589	2590	2591	2592	2593	2594	2595	2596	2597	2598	2599	2600	2601	2602	2603	2604	2605	2606	2607	2608	2609	2610	2611	2612	2613	2614	2615	2616	2617	2618	2619	2620	2621	2622	2623	2624	2625	2626	2627	2628	2629	2630	2631	2632	2633	2634	2635	2636	2637	2638	2639	2640	2641	2642	2643	2644	2645	2646	2647	2648	2649	2650	2651	2652	2653	2654	2655	2656	2657	2658	2659	2660	2661	2662	2663	2664	2665	2666	2667	2668	2669	2670	2671	2672	2673	2674	2675	2676	2677	2678	2679	2680	2681	2682	2683	2684	2685	2686	2687	2688	2689	2690	2691	2692	2693	2694	2695	2696	2697	2698	2699	2700	2701	2702	2703	2704	2705	2706	2707	2708	2709	2710	2711	2712	2713	2714	2715	2716	2717	2718	2719	2720	2721	2722	2723	2724	2725	2726	2727	2728	2729	2730	2731	2732	2733	2734	2735	2736	2737	2738	2739	2740	2741	2742	2743	2744	2745	2746	2747	2748	2749	2750	2751	2752	2753	2754	2755	2756	2757	2758	2759	2760	2761	2762	2763	2764	2765	2766	2767	2768	2769	2770	2771	2772	2773	2774	2775	2776	2777	2778	2779	2780	2781	2782	2783	2784	2785	2786	2787	2788	2789	2790	2791	2792	2793	2794	2795	2796	2797	2798	2799	2800	2801	2802	2803	2804	2805	2806	2807	2808	2809	2810	2811	2812	2813	2814	2815	2816	2817	2818	2819	2820	2821	2822	2823	2824	2825	2826	2827	2828	2829	2830	2831	2832	2833	2834	2835	2836	2837	2838	2839	2840	2841	2842	2843	2844	2845	2846	2847	2848	2849	2850	2851	2852	2853	2854	2855	2856	2857	2858	2859	2860	2861	2862	2863	2864	2865	2866	2867	2868	2869	2870	2871	2872	2873	2874	2875	2876	2877	2878	2879	2880	2881	2882	2883	2884	2885	2886	2887	2888	2889	2890	2891	2892	2893	2894	2895	2896	2897	2898	2899	2900	2901	2902	2903	2904	2905	2906	2907	2908	2909	2910	2911	2912	2913	2914	2915	2916	2917	2918	2919	2920	2921	2922	2923	2924	2925	2926	2927	2928	2929	2930	2931	2932	2933	2934	2935	2936	2937	2938	2939	2940	2941	2942	2943	2944	2945	2946	2947	2948	2949	2950	2951	2952	2953	2954	2955	2956	2957	2958	2959	2960	2961	2962	2963	2964	2965	2966	2967	2968	2969	2970	2971	2972	2973	2974	2975	2976	2977	2978	2979	2980	2981	2982	2983	2984	2985	2986	2987	2988	2989	2990	2991	2992	2993	2994	2995	2996	2997	2998	2999	3000	3001	3002	3003	3004	3005	3006	3007	3008	3009	3010	3011	3012	3013	3014	3015	3016	3017	3018	3019	3020	3021	3022	3023	3024	3025	3026	3027	3028	3029	3030	3031	3032	3033	3034	3035	3036	3037	3038	3039	3040	3041	3042	3043	3044	3045	3046	3047	3048	3049	3050	3051	3052	3053	3054	3055	3056	3057	3058	3059	3060	3061	3062	3063	3064	3065	3066	3067	3068	3069	3070	3071	3072	3073	3074	3075	3076	3077	3078	3079	3080	3081	3082	3083	3084	3085	3086	3087	3088	3089	3090	3091	3092	3093	3094	3095	3096	3097	3098	3099	3100	3101	3102	3103	3104	3105	3106	3107	3108	3109	3110	3111	3112	3113	3114	3115	3116	3117	3118	3119	3120	3121	3122	3123	3124	3125	3126	3127	3128	3129	3130	3131	3132	3133	3134	3135	3136	3137	3138	3139	3140	3141	3142	3143	3144	3145	3146	3147	3148	3149	3150	3151	3152	3153	3154	3155	3156	3157	3158	3159	3160	3161	3162	3163	3164	3165	3166	3167	3168	3169	3170	3171	3172	3173	3174	3175	3176	3177	3178	3179	3180	3181	3182	3183	3184	3185	3186	3187	3188	3189	3190	3191	3192	3193	3194	3195	3196	3197	3198	3199	3200	3201	3202	3203	3204	3205	3206	3207	3208	3209	3210	3211	3212	3213	3214	3215	3216	3217	3218	3219	3220	3221	3222	3223	3224	3225	3226	3227	3228	3229	3230	3231	3232	3233	3234	3235	3236	3237	3238	3239	3240	3241	3242	3243	3244	3245	3246	3247	3248	3249	3250	3251	3252	3253	3254	3255	3256	3257	3258	3259	3260	3261	3262	3263	3264	3265	3266	3267	3268	3269	3270	3271	3272	3273	3274	3275	3276	3277	3278	3279	3280	3281	3282	3283	3284	3285	3286	3287	3288	3289	3290	3291	3292	3293	3294	3295	3296	3297	3298	3299

Figure III.5.2 Data Availability of Rainfall Station in Region V (2/2)
REGION 5 - BICOL

STATION NO.	STATION/LOCATIONS	COORDINATES		ALTITUDE	MAINTAINED		TYPE
		LAT. (LONG)	EL., M.		BY	BY	
35	San Juan, Camarines Sur	13° 47' 123° 31'			NIA		HYDRO
36	Sipocot, Camarines Sur	13° 48' 123° 37'			PAOASA		OR
37	Vitac, Camarines	13° 39' 124° 14'	39	-da-			
38	Vitac, Ilocos, Camarines	13° 32' 124° 13'	28	-da-			SYNOP, RADAR
39	Mabuhay, Marikina	12° 22' 123° 37'	10	-da-			SYNOP, PAGO, VES
40	MADUPON, Marikina	12° 17' 123° 31'		-da-			OR
41	Palawan, Marikina	12° 08' 123° 57'		-da-			-da-
42	Palawan, Marikina	11° 52' 123° 52'		-da-			-da-
43	Bacm, Sanogon	13° 07' 124° 02'		-da-			BUOL, OR
44	Buhay, Sanogon	12° 40' 123° 57'		-da-			BUOL, OR, VES
45	Buhay, Sanogon	12° 42' 124° 06'		-da-			OR
46	Canilla, Sanogon	12° 57' 123° 52'		-da-			-da-
47	Dansol, Sanogon	12° 54' 123° 34'		-da-			-da-
48	Quint, Sanogon	12° 32' 124° 07'		-da-			BUOL, OR
49	Adnan, Sanogon	12° 51' 123° 57'		-da-			OR
50	Magnifico, Sanogon	12° 50' 123° 50'		-da-			-da-
51	Palao Dhat, Sanogon	13° 02' 124° 12'		-da-			-da-
52	Sanogon, Sanogon	12° 54' 124° 17'		-da-			-da-
53	Cherym, Sanogon	12° 57' 123° 34'		NPC			-da-

Figure III.5.3 Data Availability of Streamflow Station in Region V (2/4)
REGION 5 - BICOL

STATION NO.	RIVERS/LOCATIONS	COORDINATES		DRAINAGE AREA SQ. KM.	MAINTAINED BY		TYPE	PERIOD OF RECORD																								REMARKS																																																																																																																																																																																																																																																																																																																																																																																																																																																																																																																																																																																																																																																																																																																																																																																																																																																																																																																																																																																																																																																																																																																																																																																																																																																																																																																																																																								
		LAT.	LONG.		TRANS D	TO NWRC		1961	1962	1963	1964	1965	1966	1967	1968	1969	1970	1971	1972	1973	1974	1975	1976	1977	1978	1979	1980	1981	1982	1983	1984		1985	1986	1987	1988	1989	1990	1991	1992	1993	1994	1995	1996	1997	1998	1999	2000	2001	2002	2003	2004	2005	2006	2007	2008	2009	2010	2011	2012	2013	2014	2015	2016	2017	2018	2019	2020	2021	2022	2023	2024	2025	2026	2027	2028	2029	2030	2031	2032	2033	2034	2035	2036	2037	2038	2039	2040	2041	2042	2043	2044	2045	2046	2047	2048	2049	2050	2051	2052	2053	2054	2055	2056	2057	2058	2059	2060	2061	2062	2063	2064	2065	2066	2067	2068	2069	2070	2071	2072	2073	2074	2075	2076	2077	2078	2079	2080	2081	2082	2083	2084	2085	2086	2087	2088	2089	2090	2091	2092	2093	2094	2095	2096	2097	2098	2099	2100	2101	2102	2103	2104	2105	2106	2107	2108	2109	2110	2111	2112	2113	2114	2115	2116	2117	2118	2119	2120	2121	2122	2123	2124	2125	2126	2127	2128	2129	2130	2131	2132	2133	2134	2135	2136	2137	2138	2139	2140	2141	2142	2143	2144	2145	2146	2147	2148	2149	2150	2151	2152	2153	2154	2155	2156	2157	2158	2159	2160	2161	2162	2163	2164	2165	2166	2167	2168	2169	2170	2171	2172	2173	2174	2175	2176	2177	2178	2179	2180	2181	2182	2183	2184	2185	2186	2187	2188	2189	2190	2191	2192	2193	2194	2195	2196	2197	2198	2199	2200	2201	2202	2203	2204	2205	2206	2207	2208	2209	2210	2211	2212	2213	2214	2215	2216	2217	2218	2219	2220	2221	2222	2223	2224	2225	2226	2227	2228	2229	2230	2231	2232	2233	2234	2235	2236	2237	2238	2239	2240	2241	2242	2243	2244	2245	2246	2247	2248	2249	2250	2251	2252	2253	2254	2255	2256	2257	2258	2259	2260	2261	2262	2263	2264	2265	2266	2267	2268	2269	2270	2271	2272	2273	2274	2275	2276	2277	2278	2279	2280	2281	2282	2283	2284	2285	2286	2287	2288	2289	2290	2291	2292	2293	2294	2295	2296	2297	2298	2299	2300	2301	2302	2303	2304	2305	2306	2307	2308	2309	2310	2311	2312	2313	2314	2315	2316	2317	2318	2319	2320	2321	2322	2323	2324	2325	2326	2327	2328	2329	2330	2331	2332	2333	2334	2335	2336	2337	2338	2339	2340	2341	2342	2343	2344	2345	2346	2347	2348	2349	2350	2351	2352	2353	2354	2355	2356	2357	2358	2359	2360	2361	2362	2363	2364	2365	2366	2367	2368	2369	2370	2371	2372	2373	2374	2375	2376	2377	2378	2379	2380	2381	2382	2383	2384	2385	2386	2387	2388	2389	2390	2391	2392	2393	2394	2395	2396	2397	2398	2399	2400	2401	2402	2403	2404	2405	2406	2407	2408	2409	2410	2411	2412	2413	2414	2415	2416	2417	2418	2419	2420	2421	2422	2423	2424	2425	2426	2427	2428	2429	2430	2431	2432	2433	2434	2435	2436	2437	2438	2439	2440	2441	2442	2443	2444	2445	2446	2447	2448	2449	2450	2451	2452	2453	2454	2455	2456	2457	2458	2459	2460	2461	2462	2463	2464	2465	2466	2467	2468	2469	2470	2471	2472	2473	2474	2475	2476	2477	2478	2479	2480	2481	2482	2483	2484	2485	2486	2487	2488	2489	2490	2491	2492	2493	2494	2495	2496	2497	2498	2499	2500	2501	2502	2503	2504	2505	2506	2507	2508	2509	2510	2511	2512	2513	2514	2515	2516	2517	2518	2519	2520	2521	2522	2523	2524	2525	2526	2527	2528	2529	2530	2531	2532	2533	2534	2535	2536	2537	2538	2539	2540	2541	2542	2543	2544	2545	2546	2547	2548	2549	2550	2551	2552	2553	2554	2555	2556	2557	2558	2559	2560	2561	2562	2563	2564	2565	2566	2567	2568	2569	2570	2571	2572	2573	2574	2575	2576	2577	2578	2579	2580	2581	2582	2583	2584	2585	2586	2587	2588	2589	2590	2591	2592	2593	2594	2595	2596	2597	2598	2599	2600	2601	2602	2603	2604	2605	2606	2607	2608	2609	2610	2611	2612	2613	2614	2615	2616	2617	2618	2619	2620	2621	2622	2623	2624	2625	2626	2627	2628	2629	2630	2631	2632	2633	2634	2635	2636	2637	2638	2639	2640	2641	2642	2643	2644	2645	2646	2647	2648	2649	2650	2651	2652	2653	2654	2655	2656	2657	2658	2659	2660	2661	2662	2663	2664	2665	2666	2667	2668	2669	2670	2671	2672	2673	2674	2675	2676	2677	2678	2679	2680	2681	2682	2683	2684	2685	2686	2687	2688	2689	2690	2691	2692	2693	2694	2695	2696	2697	2698	2699	2700	2701	2702	2703	2704	2705	2706	2707	2708	2709	2710	2711	2712	2713	2714	2715	2716	2717	2718	2719	2720	2721	2722	2723	2724	2725	2726	2727	2728	2729	2730	2731	2732	2733	2734	2735	2736	2737	2738	2739	2740	2741	2742	2743	2744	2745	2746	2747	2748	2749	2750	2751	2752	2753	2754	2755	2756	2757	2758	2759	2760	2761	2762	2763	2764	2765	2766	2767	2768	2769	2770	2771	2772	2773	2774	2775	2776	2777	2778	2779	2780	2781	2782	2783	2784	2785	2786	2787	2788	2789	2790	2791	2792	2793	2794	2795	2796	2797	2798	2799	2800	2801	2802	2803	2804	2805	2806	2807	2808	2809	2810	2811	2812	2813	2814	2815	2816	2817	2818	2819	2820	2821	2822	2823	2824	2825	2826	2827	2828	2829	2830	2831	2832	2833	2834	2835	2836	2837	2838	2839	2840	2841	2842	2843	2844	2845	2846	2847	2848	2849	2850	2851	2852	2853	2854	2855	2856	2857	2858	2859	2860	2861	2862	2863	2864	2865	2866	2867	2868	2869	2870	2871	2872	2873	2874	2875	2876	2877	2878	2879	2880	2881	2882	2883	2884	2885	2886	2887	2888	2889	2890	2891	2892	2893	2894	2895	2896	2897	2898	2899	2900	2901	2902	2903	2904	2905	2906	2907	2908	2909	2910	2911	2912	2913	2914	2915	2916	2917	2918	2919	2920	2921	2922	2923	2924	2925	2926	2927	2928	2929	2930	2931	2932	2933	2934	2935	2936	2937	2938	2939	2940	2941	2942	2943	2944	2945	2946	2947	2948	2949	2950	2951	2952	2953	2954	2955	2956	2957	2958	2959	2960	2961	2962	2963	2964	2965	2966	2967	2968	2969	2970	2971	2972	2973	2974	2975	2976	2977	2978	2979	2980	2981	2982	2983	2984	2985	2986	2987	2988	2989	2990	2991	2992	2993	2994	2995	2996	2997	2998	2999	3000	3001	3002	3003	3004	3005	3006	3007	3008	3009	3010	3011	3012	3013	3014	3015	3016	3017	3018	3019	3020	3021	3022	3023	3024	3025	3026	3027	3028	3029	3030	3031	3032	3033	3034	3035	3036	3037	3038	3039	3040	3041	3042	3043	3044	3045	3046	3047	3048	3049	3050	3051	3052	3053	3054	3055	3056	3057	3058	3059	3060	3061	3062	3063	3064	3065	3066	3067	3068	3069	3070	3071	3072	3073	3074	3075	3076	3077	3078	3079	3080	3081	3082	3083	3084	3085	3086	3087	3088	3089	3090	3091	3092	3093	3094	3095	3096	3097	3098	3099	3100	3101	3102	3103	3104	3105	3106	3107	3108	3109	3110	3111	3112	3113	3114	3115	3116	3117	3118	3119	3120	3121	3122	3123	3124	3125	3126	3127	3128	3129	3130	3131	3132	3133	3134	3135	3136	3137	3138	3139	3140	3141	3142	3143	3144	3145	3146	3147	3148	3149	3150	3151	3152	3153	3154	3155	3156	3157	3158	3159	3160	3161	3162	3163	3164	3165	3166	3167	3168	3169	3170	3171	3172	3173	3174	3175	3176	3177	3178	3179	3180	3181	3182	3183	3184	3185	3186	3187	3188	3189	3190	3191	3192	3193	3194	3195	3196	3197	3198	3199	3200	3201	3202	3203	3204	3205	3206	3207	3208	3209	3210	3211	3212	3213	3214	3215	3216	3217	3218	3219	3220	3221	3222	3223	3224	3225	3226	3227	3228	3229	3230	3231	3232	3233	3234	3235	3236	3237	3238	3239	3240	3241	3242	3243	3244	3245	3246	3247	3248	3249	3250	3251	3252	3253	3254	3255	3256	3257	3258	3259	3260	3261	3262	3263	3264	3265	3266	3267	3268	3269	3270	3271	3272	3273	3274	3275	3276	3277	3278	3279	3280	3281	3282	3283	3284	3285	3286	3287	3288	3289	3290	3291	3292	3293	3294	3295	3296	3297	3298	3299	3300	3301	3302	3303	3304

Figure III.5.3 Data Availability of Streamflow Station in Region V (3/4)
REGION 5 - BICOL

STATION NO.	RIVERS/LOCATIONS	COORDINATES		DRAINAGE AREA SQKM.	MAINTAINED BY	TYPE	PERIOD OF RECORD																												REMARKS																																																																																																																																																																																																																																																																																																																																																																																																																																																																																																																																																																																																																																																																																																																																																																																																																																																																																																																																																																																																																																																																																																																																																																																																																																																																																																																																																																				
		LAT.	LONG.				1941	1942	1943	1944	1945	1946	1947	1948	1949	1950	1951	1952	1953	1954	1955	1956	1957	1958	1959	1960	1961	1962	1963	1964	1965	1966	1967	1968		1969	1970	1971	1972	1973	1974	1975	1976	1977	1978	1979	1980	1981	1982	1983	1984	1985	1986	1987	1988	1989	1990	1991	1992	1993	1994	1995	1996	1997	1998	1999	2000	2001	2002	2003	2004	2005	2006	2007	2008	2009	2010	2011	2012	2013	2014	2015	2016	2017	2018	2019	2020	2021	2022	2023	2024	2025	2026	2027	2028	2029	2030	2031	2032	2033	2034	2035	2036	2037	2038	2039	2040	2041	2042	2043	2044	2045	2046	2047	2048	2049	2050	2051	2052	2053	2054	2055	2056	2057	2058	2059	2060	2061	2062	2063	2064	2065	2066	2067	2068	2069	2070	2071	2072	2073	2074	2075	2076	2077	2078	2079	2080	2081	2082	2083	2084	2085	2086	2087	2088	2089	2090	2091	2092	2093	2094	2095	2096	2097	2098	2099	2100	2101	2102	2103	2104	2105	2106	2107	2108	2109	2110	2111	2112	2113	2114	2115	2116	2117	2118	2119	2120	2121	2122	2123	2124	2125	2126	2127	2128	2129	2130	2131	2132	2133	2134	2135	2136	2137	2138	2139	2140	2141	2142	2143	2144	2145	2146	2147	2148	2149	2150	2151	2152	2153	2154	2155	2156	2157	2158	2159	2160	2161	2162	2163	2164	2165	2166	2167	2168	2169	2170	2171	2172	2173	2174	2175	2176	2177	2178	2179	2180	2181	2182	2183	2184	2185	2186	2187	2188	2189	2190	2191	2192	2193	2194	2195	2196	2197	2198	2199	2200	2201	2202	2203	2204	2205	2206	2207	2208	2209	2210	2211	2212	2213	2214	2215	2216	2217	2218	2219	2220	2221	2222	2223	2224	2225	2226	2227	2228	2229	2230	2231	2232	2233	2234	2235	2236	2237	2238	2239	2240	2241	2242	2243	2244	2245	2246	2247	2248	2249	2250	2251	2252	2253	2254	2255	2256	2257	2258	2259	2260	2261	2262	2263	2264	2265	2266	2267	2268	2269	2270	2271	2272	2273	2274	2275	2276	2277	2278	2279	2280	2281	2282	2283	2284	2285	2286	2287	2288	2289	2290	2291	2292	2293	2294	2295	2296	2297	2298	2299	2300	2301	2302	2303	2304	2305	2306	2307	2308	2309	2310	2311	2312	2313	2314	2315	2316	2317	2318	2319	2320	2321	2322	2323	2324	2325	2326	2327	2328	2329	2330	2331	2332	2333	2334	2335	2336	2337	2338	2339	2340	2341	2342	2343	2344	2345	2346	2347	2348	2349	2350	2351	2352	2353	2354	2355	2356	2357	2358	2359	2360	2361	2362	2363	2364	2365	2366	2367	2368	2369	2370	2371	2372	2373	2374	2375	2376	2377	2378	2379	2380	2381	2382	2383	2384	2385	2386	2387	2388	2389	2390	2391	2392	2393	2394	2395	2396	2397	2398	2399	2400	2401	2402	2403	2404	2405	2406	2407	2408	2409	2410	2411	2412	2413	2414	2415	2416	2417	2418	2419	2420	2421	2422	2423	2424	2425	2426	2427	2428	2429	2430	2431	2432	2433	2434	2435	2436	2437	2438	2439	2440	2441	2442	2443	2444	2445	2446	2447	2448	2449	2450	2451	2452	2453	2454	2455	2456	2457	2458	2459	2460	2461	2462	2463	2464	2465	2466	2467	2468	2469	2470	2471	2472	2473	2474	2475	2476	2477	2478	2479	2480	2481	2482	2483	2484	2485	2486	2487	2488	2489	2490	2491	2492	2493	2494	2495	2496	2497	2498	2499	2500	2501	2502	2503	2504	2505	2506	2507	2508	2509	2510	2511	2512	2513	2514	2515	2516	2517	2518	2519	2520	2521	2522	2523	2524	2525	2526	2527	2528	2529	2530	2531	2532	2533	2534	2535	2536	2537	2538	2539	2540	2541	2542	2543	2544	2545	2546	2547	2548	2549	2550	2551	2552	2553	2554	2555	2556	2557	2558	2559	2560	2561	2562	2563	2564	2565	2566	2567	2568	2569	2570	2571	2572	2573	2574	2575	2576	2577	2578	2579	2580	2581	2582	2583	2584	2585	2586	2587	2588	2589	2590	2591	2592	2593	2594	2595	2596	2597	2598	2599	2600	2601	2602	2603	2604	2605	2606	2607	2608	2609	2610	2611	2612	2613	2614	2615	2616	2617	2618	2619	2620	2621	2622	2623	2624	2625	2626	2627	2628	2629	2630	2631	2632	2633	2634	2635	2636	2637	2638	2639	2640	2641	2642	2643	2644	2645	2646	2647	2648	2649	2650	2651	2652	2653	2654	2655	2656	2657	2658	2659	2660	2661	2662	2663	2664	2665	2666	2667	2668	2669	2670	2671	2672	2673	2674	2675	2676	2677	2678	2679	2680	2681	2682	2683	2684	2685	2686	2687	2688	2689	2690	2691	2692	2693	2694	2695	2696	2697	2698	2699	2700	2701	2702	2703	2704	2705	2706	2707	2708	2709	2710	2711	2712	2713	2714	2715	2716	2717	2718	2719	2720	2721	2722	2723	2724	2725	2726	2727	2728	2729	2730	2731	2732	2733	2734	2735	2736	2737	2738	2739	2740	2741	2742	2743	2744	2745	2746	2747	2748	2749	2750	2751	2752	2753	2754	2755	2756	2757	2758	2759	2760	2761	2762	2763	2764	2765	2766	2767	2768	2769	2770	2771	2772	2773	2774	2775	2776	2777	2778	2779	2780	2781	2782	2783	2784	2785	2786	2787	2788	2789	2790	2791	2792	2793	2794	2795	2796	2797	2798	2799	2800	2801	2802	2803	2804	2805	2806	2807	2808	2809	2810	2811	2812	2813	2814	2815	2816	2817	2818	2819	2820	2821	2822	2823	2824	2825	2826	2827	2828	2829	2830	2831	2832	2833	2834	2835	2836	2837	2838	2839	2840	2841	2842	2843	2844	2845	2846	2847	2848	2849	2850	2851	2852	2853	2854	2855	2856	2857	2858	2859	2860	2861	2862	2863	2864	2865	2866	2867	2868	2869	2870	2871	2872	2873	2874	2875	2876	2877	2878	2879	2880	2881	2882	2883	2884	2885	2886	2887	2888	2889	2890	2891	2892	2893	2894	2895	2896	2897	2898	2899	2900	2901	2902	2903	2904	2905	2906	2907	2908	2909	2910	2911	2912	2913	2914	2915	2916	2917	2918	2919	2920	2921	2922	2923	2924	2925	2926	2927	2928	2929	2930	2931	2932	2933	2934	2935	2936	2937	2938	2939	2940	2941	2942	2943	2944	2945	2946	2947	2948	2949	2950	2951	2952	2953	2954	2955	2956	2957	2958	2959	2960	2961	2962	2963	2964	2965	2966	2967	2968	2969	2970	2971	2972	2973	2974	2975	2976	2977	2978	2979	2980	2981	2982	2983	2984	2985	2986	2987	2988	2989	2990	2991	2992	2993	2994	2995	2996	2997	2998	2999	3000	3001	3002	3003	3004	3005	3006	3007	3008	3009	3010	3011	3012	3013	3014	3015	3016	3017	3018	3019	3020	3021	3022	3023	3024	3025	3026	3027	3028	3029	3030	3031	3032	3033	3034	3035	3036	3037	3038	3039	3040	3041	3042	3043	3044	3045	3046	3047	3048	3049	3050	3051	3052	3053	3054	3055	3056	3057	3058	3059	3060	3061	3062	3063	3064	3065	3066	3067	3068	3069	3070	3071	3072	3073	3074	3075	3076	3077	3078	3079	3080	3081	3082	3083	3084	3085	3086	3087	3088	3089	3090	3091	3092	3093	3094	3095	3096	3097	3098	3099	3100	3101	3102	3103	3104	3105	3106	3107	3108	3109	3110	3111	3112	3113	3114	3115	3116	3117	3118	3119	3120	3121	3122	3123	3124	3125	3126	3127	3128	3129	3130	3131	3132	3133	3134	3135	3136	3137	3138	3139	3140	3141	3142	3143	3144	3145	3146	3147	3148	3149	3150	3151	3152	3153	3154	3155	3156	3157	3158	3159	3160	3161	3162	3163	3164	3165	3166	3167	3168	3169	3170	3171	3172	3173	3174	3175	3176	3177	3178	3179	3180	3181	3182	3183	3184	3185	3186	3187	3188	3189	3190	3191	3192	3193	3194	3195	3196	3197	3198	3199	3200	3201	3202	3203	3204	3205	3206	3207	3208	3209	3210	3211	3212	3213	3214	3215	3216	3217	3218	3219	3220	3221	3222	3223	3224	3225	3226	3227	3228	3229	3230	3231	3232	3233	3234	3235	3236	3237	3238	3239	3240	3241	3242	3243	3244	3245	3246	3247	3248	3249	3250	3251	3252	3253	3254	3255	3256	3257	3258	3259	3260	3261	3262	3263	3264	3265	3266	3267	3268	3269	3270	3271	3272	3273	3274	3275	3276	3277	3278	3279	3280	3281	3282	3283	3284

