

VIETNAM RESEARCH INSTITUTE OF LAND ADMINISTRATION

**VIRILA**

Add.: Hoang Quoc Viet str - Cau Giay dist - Hanoi

Tel.: (84.4) 7561156, (84.4) 7561155

Fax: (84.4) 7540186, (84.4) 7561156

Email : [proj2.cplar@hn.vnn.vn](mailto:proj2.cplar@hn.vnn.vn)

---

## I. GENERAL INTRODUCTION

Under Prime Minister's Decision No:782/TTG dated 24<sup>th</sup> October 1996, Vietnam Science - Technology Institute of Land Administration (VISTILA) which was established under the Prime Minister's Decree No: 34/CP dated 23<sup>rd</sup> April 1994 is renamed as *Vietnam Research Institute of Land Administration (VIRILA)*

### 1.1. Main functions and responsibilities :

1. Science-Technology Research, Implementation and transfer new technology in Geodesy, Cartography and Land administration fields.
2. Carrying out surveying, mapping and land administration projects using high technology in Vietnam and overseas.
3. Establishment of National control coordinate networks by GPS technology
4. Aerial survey photography
5. Hydrographic survey and mapping
6. Ground surveying and digital mapping of topomaps and thematic maps
7. Research and establishment of DATABASE and GIS

### 1.2. Organization of VIRILA:

#### 1. *The labour force is of 158 persons. Of them:*

- Doctors, Masters: 10 persons
- Qualified engineers: 80 persons

#### 2. *Director board:*

- Director: Doctor Nguyen Tho Cac
- Deputy Director:

Eng. Le Minh

Dr. Nguyen Dung Tien

### 3. *Functional divisions :*

- Administration Division
- Planning and Financial Division
- Science-Technology Division

### 4. *Dependent production and research units:*

- 3 Centers for production, research and training
- Science-research sections
- Representative office in Ho Chi Minh City

## II. TECHNICAL EQUIPMENT CAPABILITY OF VIRILA

VIRILA is equipped with modern equipments and new technology for all its activity fields.

### II.1. For Control elevation and coordinate network :

Dual frequency GPS 4000 SSI, SSE:	4 sets
Single frequency GPS 4000 SE, SOKIA:	5 sets
GPS Total station RTK 4600 LS:	5 sets

### II.2. For Ground survey :

#### 1. *Total Station:*

- SET 2B (Japan):	5 sets
- SET 3B (Japan):	4 sets
- SET 5E (Japan):	6 sets
- GEODIMETER (Sweden):	5 sets

#### 2. *For accurate levelling:*

- Ni004, Ni025, Ni030...

### II.3. For Aerial photography :

#### 1. Camera with GPS Navigation

- RC-8 (Switzerland):	1 set
- RC-30 (Switzerland):	1 set

- RMK-TOP ( Germany): 1 set
- 2. Colour, black and white Automatic photo labor. system KODAK

#### **II.4. For aerial photo processing and digital mapping :**

1. Scanner SKAI-2 (with resolution 75 $\mu$ m): 1 set
2. Triangulation, processing and mapping stations:
  - Imagestation ZII (Intergraph-USA) : 1 set
  - Imagestation ZIII (Intergraph-USA) : 1 set
3. Stereo plotter TOPOCAR 1 set
4. Workstations with large memory for digitizing

#### **II.5 For map plotting :**

- Mapsetter 6000 1 set
- Plotter A0 HP 6000 1 set
- Plotter A0 CANCOM 1 set

#### **II.6. Softwares for processing :**

- Software for auto-processing control coordinate network: GPSurvey V2.3, Trimnet....
- Software for digital auto-plotting: SDR, GEOCOMP, GEONAV
- Software for auto-design and engineering SDR
- Software for GIS and data base management: ARC/INFO, ILWIS, ORACLE
- Software for photo processing
  - + Triangulation: Photo-T, PAT-B, PAT-BM
  - + For DTM: Match-T, Match-AT
  - + For Digital: Microstation
  - + For photo rectification: Base rectifile
- Other software of Intergraph: Mapping office, MGE...
- For mapping: Map-publisher, Map-finisher...

### III. PROJECTS IMPLEMENTED BY VIRILA

#### III.1. In Vietnam

##### 1. *Aerial photography:*

Quang ninh-Hai hung provinces, Ha nam-Thai binh provinces, Kien giang-Can tho-Soc trang provinces, East-North region of Vietnam, Quang ngai-Binh dinh provinces...

##### 2. *Control coordinate network establishment :*

- National GPS network,
- Regions GPS network for provinces,
- Base coordinate network along Vietnam-Lao border
- National Maritime coordinate network

##### 3. *Ground survey and mapping :*

- Bathymetric survey and mapping for provinces Quang ninh, Hai phong at scale 1/10.000
- Topomap at scale 1/50.000 for Ha giang province, at scale 1/10.000 for Tay nguyen Plateau
- Digital photomap at scale 1/2.000-1/10.000 for Dong nai, Ha nam provinces
- Cadastral map at scale 1/200 for Hanoi city
- Compilation and reproduction for National Atlas of Vietnam

#### III.2. Oversea and Cooperation projects :

- Establishment of National coordinate network for LAO P.D.R
- Establishment of Geographical atlas of Lao P.D.R
- Up-dating and establishment of topomap at scale 1/50.000 for 4 provinces in South of Lao P.D.R
- Aerial photography for Boloven plateau in Laos
- Establishment of elevation network for 8 provinces in North of Laos.
- Surveying and mapping at scales: 1/500-1/20.000 for Hydro-electric design projects in Lao: Nam theun (1992); Nam Mang(1993); Nam leuk (1992); Huoi ho (1993)...
- Surveying for road design projects for National road N0.13 in Lao P.D.R
- Surveying for road design projects for National road N0.5, N0.1A, N0.18... by foreign ODA

- Topomap surveying and mapping at scale 1/5.000 for Noi bai airport (Japanese ODA)
- Arial photography and establishment of photomaps at scale 1/5.000 for Hanoi (Japanese ODA)
- Topomap surveying and mapping for Dong nai river (Japanese ODA)

#### IV. INTERNATIONAL RELATIONS

- By implementation of surveying and mapping projects, land administration projects and production contracts VIRILA has established close relations with many foreign companies and organizations as:
  - LAO P.D.R: National Geographic Department, Electricity Department....
  - JAPAN: KOKUSAI KOGYO,PASCO INTERNATIONAL INC.,SOKIA, PACIFIC CONSULTANT INTERNATIONAL ....
  - USA: DMJM INTERNATIONAL....
  - AUSTRALIA: KEVRON, DOLA, AAM, ADAM....
  - Other Companies: BECA WORLAY (Newzealand), NORPOWER (Norway), LAMAYER (Germany), SAMWHAN (Korea), SWEDSURVEY (Sweden)....

## Questionnaire To Ministry of Agriculture and Rural Development

### 1. Forestry Management in Vietnam in General

#### 1.1 Status-quo of forests in Vietnam.

##### 1.1.1 Acreage of forests by category.

##### 1.1.2 Acreage of forests by forest - type.

##### 1.1.3 Growing stock.

区分	天然林	人工林	計( ha)	天然林	人工林	計(千 m3)
生産林	4,293,600	631,600	4,925,200	295,176.4	9,663.7	304,840.1
保護林	3,103,100	375,600	3,478,700	206,173.1	4,422.4	210,595.5
特別用途林	855,800	42,500	898,300	67,764.7	456.3	68,221.0
計	8,252,500	1,049,700	9,302,200	569,114.1	14,542.4	583,656.5

#### 1.2 The latest Forestry Act and related laws, policy, and the budget and personnel of Forestry Development Department.

1) Long term forestry development plan : project proposal "strengthening afforestation, re-greening bare land and denuded hills, towards closing natural forest" is established.

2) No 661/QD-TTg dated 29 July 1998 on 5 million ha afforestation.

3) Establish regulation on use of 3 forest categories ( production, protection and special-use forest ).

4) Law on forest protection and development dated 19 August 1991.

5) Law on land dated 24 July 1993.

6) No 18/HDBT dated 5 August 1994 On precious and rare plants and animals, and protection and management mechanism.

7) Governmental announcement on joining in Cities Convention.

8) No 02 on land and forest allocation.

9) No 02/QD-1999-BNN-PTLN dated 5 January 1999 on logging.

10) No 47 of the Ministry on circulation.

11) No 65 and 136 of the Government on export.

12) Regulation on management of 3 forest categories.

13) No 245 on state management on forest and forestry land.

Forestry Development Department 組織構成

Director

Vice Director in charge of silviculture and logging

Vice Director in charge of processing, consumption and export

Vice Director in charge of 5 million ha afforestation program

Planning Division,

Forest Establishment and Development Division,  
Forest Management and Utilization Division,  
Office of 5 million ha afforestation program,  
Administration Division.

### 1.3 Importance of watershed conservation.

Main objective is to keep water and protect land; prevent harmful factors; balance water resource; limit natural disaster; harmonize climate; ensure ecobalance; environmental security and protect production for people's living.

Protection forest links worth projects of Hydro power, irrigation; prevents flooding, sand moving, sea wave, mangrove, expand land to sea. It protects environment for cities, industrial zones and rehabilitates ecology.

### 1.4 Promotional method of plantation, such as tax alleviation, subsidy and low interest loan.

税軽減、ソフトローン（月利0.81%）、輸出・加工支援、土地分与（50年）。

#### 1) Policy on investment of state budget

- Supplementary investment sum in activities of critical protection and very critical protection forest restoration, protection is 50,000 VND/ha/year during 5 years.
- Supplementary investment sum in activities of forest restoration for regeneration combined with supplementary planting applicable to the above mentioned forest types is 1,000,000 VND/ha/year during 6 years.
- Supplementary investment sum in planting trees applicable two above mentioned is 2,500,000 VND/ha.
- Supplementary investment sum which was given to planters who plant precious and rare timber species with cycle of over 30 years is 2,000,000 VND/ha.
- + Policy on credit loan;
- Those households who plant trees are given preferential treatments according to the law on domestic investment incentives.
- Those households who plant trees are given loan from national investment support fund and other preferential funds, ODA of foreign countries and given domestic loan with low interest following general regulations.
- + Policy on beneficiary; executed under Governmental regulation on management of 3 forest categories.
- + Policy on circulation; executed smoothly under the Decision 47/QD/1999 BNN-KD of Ministry of Agriculture and Rural Development.
- + Policy on consumption of man made forest products;
- The Government encourage and create favorable conditions for planters to be able to consume man-made forest products on domestic market.

- The Government guideline and create supporting condition for planters to consume products as well as guidelines important industrial factories such as paper mill, chip board factory, MDF factory, coal mine to make long term and stable plan on consumption of man made forest products of planters.

+ Policy on export;

- After balancing all domestic demands of using man made products, it is free to export for foreign enterprises.

+ Policy on tax;

- Planters are given priority policy on land tax, exempt from VAT when selling products, export tax (regulated on the tax law of Vietnam).

1.5 Prospect to become a member nation of ITTO.

400万円の負担金が困難、加入時期は未定。

## 2. Forest Management in the Study Area

### 2.1 Zoning of the area.

#### 2.1.1 Is there any zoning system for the areas?

生産林と保全林に指定。

#### 2.1.2 Management system adopted for the areas by zone, if any.

生産林は林業公社が経営、保全林は保全林管理委員会が管理、少数民族対策は定住促進。

#### 2.1.3 Is, or was, there any area designed for forest concession?

林業公社が立木で伐採業者に販売、伐採量は中央政府が決定。

#### 2.1.4 If yes to 2.1.3, what is condition, i.e. acreage, the number of concessionaires, management cycle, etc.?

### 2.2 Status-quo of forests in the Study areas

#### 2.2.1 Growing stock in the area.

森林をrich, middle, poor, young に分けて資源量を算出。平均材積量に面積を掛け合わせている。Kon Plong 郡のデータは以下の通り（数値の間違い有り）。

	天然林	人工林	裸地	その他	計
面積 (ha)	144,503.2	3,904.7	61,447.3	14,974.8	224,830
材積 (m3)	15,219,530	100,444			15,219,530

#### 2.2.2 Annual increment by species.

不明、Forest Science Institute of Vietnam にデータ有るとの回答。

#### 2.2.3 Annual allowable cut.

現在全国で年間300千m3伐採可能。当面10～15年は本数値を使用する予定。6 林業公社で97年は16,000m3、99年は3,700m3。

Kon Plong 郡：16,284m3 (1997), 13,680m3(1998), 4,100m3(1999)

Mang La F.E.：1,200m3(1999)

#### 2.2.4 Actual annual cuts for these years.

1996年以前は全国で150万m<sup>3</sup>/年伐採していた。Mang La 林業公社は99年現在時点で伐採許容量1200m<sup>3</sup>のうち400m<sup>3</sup>伐採。

Kon Plong 郡 : 16,284m<sup>3</sup>(1997), 13,680m<sup>3</sup>(1998), 4,100m<sup>3</sup>(1999)

Mang La F.E. : 400m<sup>3</sup>(1999)

#### 2.2.5 Illegal logging estimated, if available.

小規模だが存在する。

#### 2.2.6 Penalty for illegal logging by law.

Governmental Decision No 77/CP.

#### 2.2.7 Situation of penalty execution.

不明。

#### 2.2.8 Tree Volume Table

FIPIが所有。

#### 2.3 Forest products such as roundwood, fuelwood, sawnwood, board, etc.

##### 2.3.1 Production and consumption trend;

薪炭材は不明。Kon Plong 郡内 2 カ所の製材所で年間3000m<sup>3</sup> (丸太換算) 消費。

##### 2.3.2 Price and market.

価格は丸太が800,000~1,000,000 VND /m<sup>3</sup>、製材品が1,400,000~1,600,000 VND/m<sup>3</sup>、市場はメコンデルタ地域と南部地域。1us\$=13,890 VND 1999.07.20 現在。

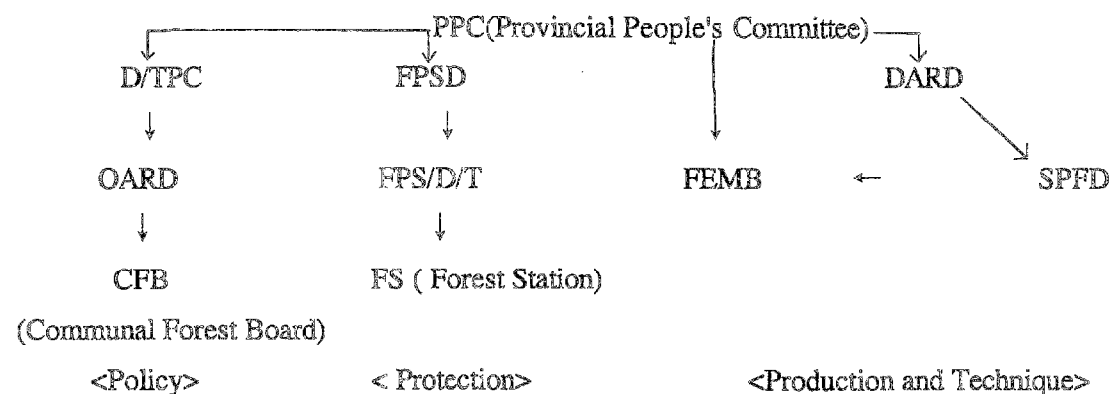
##### 2.3.3 Number and its capacity of existing forest products industry plants such as sawmill, chip mill and board factory.

Kon Plong 郡内 2 カ所の製材所有り。

#### 2.4 Management

2.4.1 Organization chart, budget and staff number of forestry sections of People's Committee of Kon Turn Province, Kon Plong District People's Committee and Commune People's Committee, especially Forestry Board.

別紙Appendix I & II参照。



D/TPC: District/Town People's Committee

FPSD: Forest Protection Sub-department

DARD: Department of Agriculture and Rural Development

OARD: Office of Agriculture and Rural Development

FPS/D/T: Forest Protection Stations/District/Town

FE/MB: Forest Enterprises/Management Board

SDFD: Sub department for Forestry Development

2.4.2 Forest control station in Kon Plong District, if yes location and its responsibility.

各保全林に林業保護局がコントロールステーションを設置している。

2.4.3 Cause of forest fire, damaged area and its countermeasure to be taken.

山火事はまれ、松林で小規模山火事有り。

2.4.4 Distance and maintenance cost per year of forest road in the Study Area.

Mang La 林業公社管轄内で総延長31km、維持管理費は1,000,000 VND/km/year、機材は特に無し。

2.5 Technical data

2.5.1 Plantation ( species, growth, survival rate, cutting period, seed procurement, ground preparation, planting number per hectare, disease and insect damage, planting and tending cost ).

- Species: Pinus Kesyia

- Survival rate: 85-90%

- Cutting period: 35 years

- Planting numbers per hectare: 1,600 seedlings/ha

- Planting and tending cost for the first year: 2,300,000 VND/ha

- Tending cost for the next two years: 1,530,000 VND/ha

2.5.2 Logging ( logging regulations, logging cycle, limited logging volume and unpermitted cutting small diameter class of each species ).

- Logging regulations: The Decision No 02/BNN-PTLN issued by MARD dated 05 January 1999 on wood logging and forest product harvesting regulation.

- Logging cycle: 35 years applicable to ever green broad leaved forest, deciduous forest, coniferous forest, wood and bamboo mixed forest.

- Logging cycle: 40 years applicable to dry open forest of Dipterocarps, 10 years applicable to pit prop forest.

- Plantation that is not matured for logging will be thinned and maintained.

2.5.3 Area of clear cutting and selected cutting in Study Area, and availability of another cutting system.

不明。

2.5.4 Enrichment planting ( survival rate, growth volume, elongating growth per year of each species).

不明。

2.5.5 Data related to watershed conservation such as rainfall, flow rate and decreased forest area.

不明。

2.5.6 Material forest planting area for chip wood and fiber wood,etc. and species.

不明。

### 3. People Participation in Forest Management

3.1 Prospect of adopting co-management approach to the Study.

予定はなし。

3.2 Forest resources to be open to local people such as NTFP, Timber Concession, Grazing or Agricultural Land etc..

林業公社は、保全林と生産林の保育を農民と森林保全管理契約している（政府が管理費を農民に支払い、農民が違法伐採の監視など森林保全管理を行う、薪炭採取も可能）。管理費は生産林が25,000 VND/ha/year、保全林が50,000 VND/ha/year である。Mang La 林業公社では計5,004.9haにつき農民と契約している。

Land and forest allocation policy that is a direction of the Party and State, is supported willingly by people living in and close to forest. Farmers households can sign contract for forest management and protection with Forest Enterprises and Management Board.

While contracting duration, director of project must check forest management and protection activities of the households. Forest management and protection fee is 50,000 VND/ha/year. The households can collect firewood and minor forest products under forest canopy.

In Kon Plong district, there are 50,889 ha forest that signed contract with 2,447 households. In Mang La Forest enterprise management area, there are 5,004.9 ha that Mang La Forest Enterprise signed contract with 289 households.

### 4. Scope of the Study

4.1 Target year.

2010年

4.2 Target people.

林業公社が主なターゲット、次が農民。

4.3 Guideline for conservation and sustainable development in the project area.

4.3.1 Objective, contents and target personnel.

モデルエリア以外の他の林業公社の参考にしたい。特に、伐採後の林地処理、補植に関心有り。

4.3.2 Is ITTO guideline for sustainable management of natural tropical forests, prepared in 1998, sufficient or insufficient for your purpose ?

実際の計画作成に使えるガイドラインを作って欲しい。

4.4 Project plan after Study.

4.4.1 Planned financial resource .

未定。

4.4.2 Implementing body of project.

林業公社。

4.5 Relation with higher rank programs such as Central Highland Forestry Development Program or Five million hectares afforestation plan.

関連はあり、ただし詳細は不明。

4.6 Necessity to prepare forest map ( 1/25,000 ) and forest resource book in the project area.

モデルエリアのみで了解。

4.7 Standpoint to narrow down a model area and if possible, some proposed sites.

Mang La Forest Enterprise が第一候補。

## 5. Forest Inventory

5.1 The requested kinds of data for the Study such as species and timber volume of every forest type.

樹種と材積量で了解。

5.2 Existing data prepared by Forest Enterprises or other organization, if any.

不明。FIPIにデータ有り。

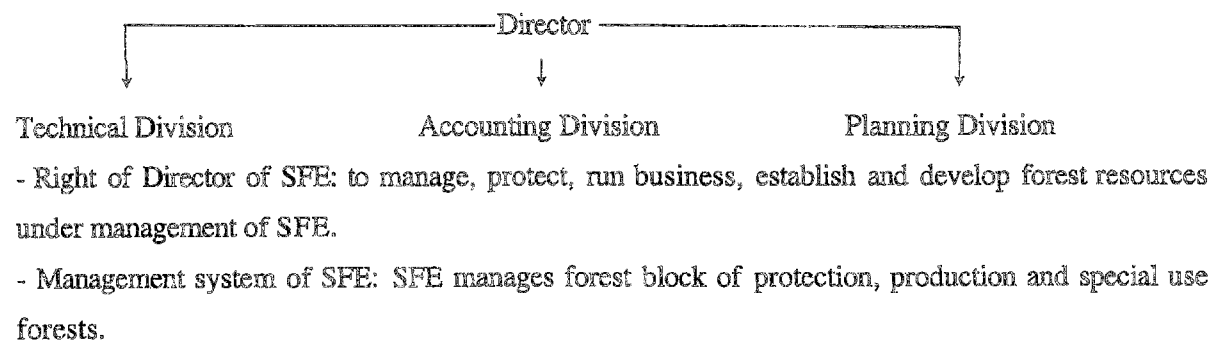
## 6. State Forestry Enterprises (SFEs)

6.1 Name, organization chart, budget and staff ( officers and worker separately ) of SFEs on and around the Study Area and their jurisdiction and activities.

Kon Plong 郡内に 6 つの林業公社有り、スタッフは 3 ~ 4 人。

Mang La, Mang Den, Mang Canh I, Mang Canh II, Dak Ruong, Tan Lap 以上

Organization of Forest Enterprise



6.2 Restructuring plans and its implementation for the SFEs, if any.

民営化の予定はなし。

6.3 Equipments list for logging of the Forest Enterprise.

機材は所有せず、立木販売。

6.4 Forest management system adopted by the Forest Enterprise.

天然林施業。

7. Socio-economic condition in Study Area

7.1 Number of population, household, race, settlement by communes, traditional and administrative organization, example of group work, existence of female group, and residents register in the Study Area.

Kon Plong 郡：30,848 人、世帯数6,198

Mang La 林業公社管内では人口2,644人、1 世帯平均 5 人。

7.2 Number of population by ethnic groups in the Study Area.

Kinh, Xe Dang, Kdong, Mnam and Hre. Mang La FE にはMnamとHre族が居住。

Majority of people who are living in the district is ethnic minority people, their living condition is still low and their knowledge also is low.

7.3 In-migration to Kon Tum province that is planned and/or promoted by the government, if any.

定住化プログラム有り（トタン屋根の小屋を多く見た）。

7.4 Major cash income sources of the people in the Study Area.

自給用耕作が主。

7.5 Cropped area, production, typical farming practices such as cropping pattern and yield, agricultural land tenure, market and farmer's organization.

水稻は年 1 回収穫、収量は 2 トン/ha/year とヴェトナム平均の半分、日本の 3 分の 1。

7.6 On-going and planned development activities in and around the Study Area.

特に無し。

7.7 Availability of basic social facilities and services ( school, clinic and water supply etc.).

Kon Plong 郡：医療ユニットが10、小中学校14、幼稚園45、テレビ放送は116 集落中26。

Mang La 管内で小学校 2、看護婦のいる医療ユニットが 2、各集落に幼稚園（計15）、飲料水は沢を利用。電気・電話は無し、インフラは未整備。

7.8 Planned land allocation program to farmers (location, area ) in the Study Area.

森林保全管理契約によるもの以外は特に無し。

7.9 Hunting or fishing people in and around the Study Area, not as game but livelihood.

不明、多分いないと思われる。

## 8. Aerial photograph.

### 8.1 Covered area to be taken in 1992 and its flying index map.

調査対象地全域、DARDの林業開発部内にある（現物未確認）。

### 8.2 Possibility to use existing photograph to JICA study.

問題なし。

### 8.3 Permission to take the aerial photograph to Japan.

首相府に申請、手続き必要日数30～40日。

### 8.4 Reason of that its scale is 1/25,000.

特に無し。

### 8.5 Suitable season to take the aerial photograph and month of defoliation.

4～5月が適期、Kon Plong 郡内でも東部と西部で異なる。

## 9. GIS ( Geographic Information System ) operated at present

### 9.1 Specification and number of hardware and software used for existing GIS, if any.

GIS無し。

## 10. Natural resource conservation / biodiversity

### 10.1 Name and features of existing and/or proposed protected areas in and around the Study Area.

Mang La 管内では491,492,494,500 林班が保全区。

### 10.2 Existence of endangered flora and fauna, and their inhabited area in and around the Study Area.

虎・クマ目撃、ただし希少動物の一覧は無し。

### 10.3 On-going and planned conservation-oriented project/programs to protect endangered species like tiger.

### 10.4 On-going or completed research/survey on biodiversity in and around the Study Area.

生物多様性の保護を目的とするWWFプロジェクト実施予定。

### 10.5 Some example of Environmental Impact Assessment in forestry project, if any.

無し。

## 11. Office for the Japanese Study team

### 11.1 Location and its space of an office at Study Area.

Kon Tum のDARD内に候補有り（5×10m程度）。

### 11.2 Existence of furniture, telephone, fax, copy machine, water and electricity.

机と椅子、水・電気はあり。他は無し。

## 12. Counter personnel

### 12.1 Name and position of candidates in the following fields;

- Forest Management;
- Forest Inventory / Plantation;
- Social Economy;
- Soil;
- Environment;
- Project Planning.

候補者未定。

### 12.2 Candidates and his or her subject with priority of counterpart training in Japan.

候補者未定。

## 13 Opening Final Report to the public

### 13.1 Yes or no.

公開で了解。

## 14 Technology transfer seminar

### 14.1 Necessity to hold the seminar to disseminate the output of the Study.

セミナー開催必要。

### 14.2 Target people of the seminar

主に林業公社技術者、その他は人民委員会、DARDの技術者。

## 15 Unit price

### 15.1 4 WD vehicle per day in the Study Area.

4,500～5,000 VND / km、運転手出張時は100,000～200,000 VND / night。

### 15.2 Guide and labor per day in the Study Area.

テクニシャンレベルで20,000～30,000 VND /day、作業員で15,000 VND/day。

### 15.3 Interpreter from English to local language of ethnic group, per day in the Study Area.

英語と少数民族語の通訳は無し、ヴェトナム語と少数民族語通訳で20us\$/日、英語とヴェトナム語で30～40us\$/日。

### 15.4 Translation of documents from Vietnamese to English.

不明。



## CÔNG TY THƯƠNG MẠI HAYKO

33A Lý Thường Kiệt, Hà Nội \* Tel : (84.4) 934 4882, 934 4524 \* Fax : (84.4) 934 4524

Hà nội, ngày .... tháng ..... năm 1999

### BÁO GIÁ

Kính gửi:

Công ty chúng tôi hân hạnh kính gửi tới quý khách báo giá một số chủng loại máy sau:

TT	TÊN HÀNG		ĐƠN GIÁ USD
01	Vivace 160 ( Standard gồm 1 khay + 1 Khay tay) <u>Bộ phận chọn thêm</u> : - Kệ máy ( cabinet ) - Bộ phận 2 khay giấy thêm	100 350	1.900
02	Vivace 250 ( Standard gồm 2 khay + 1 Khay tay) <u>Bộ phận chọn thêm</u> : - Kệ máy ( cabinet ) - 1 Khay và kệ máy( 1 tray module) - Bộ phận tự nạp bản gốc ( ADF) Bộ phận tự động chia bản chụp và dập ghim 10 khay	150 500 1100 1250	2.400
03	Vivace 340 ( Standard gồm 2 khay + 1 Khay tay) <u>Bộ phận chọn thêm</u> : - Kệ máy ( cabinet ) - 1 Khay và kệ máy( 1 tray module) - Bộ phận tự nạp bản gốc ( ADF) Bộ phận tự động chia bản chụp và dập ghim 10 khay (SS)	150 500 1100 1250	2.800
04	Vivace 450(Standard 4 khay+1 Khay tay+DADF + khay đảo bản chụp) <u>Bộ phận chọn thêm</u> : (quý khách có thể chọn 1 trong 2 bộ phận sau) - Bộ phận tự động chia bản chụp 20 khay ( 20 Bin sorter) - Bộ phận tự động chia bản chụp & ghim& đục lỗ 20 khay	1850 3500	7.400
05	Vivace 455( Standard 4 khay + 1 Khay tay+ DADF + khay đảo bản chụp) <u>Bộ phận chọn thêm</u> : (quý khách có thể chọn 1 trong 2 bộ phận sau) - Bộ phận tự động chia bản chụp 20 khay ( 20 Bin sorter) - Bộ phận tự động chia bản chụp & ghim& đục lỗ 20 khay	1850 3500	7.700
06	Vivace 550 ( Standard : 4 khay+1 Khay tay+DADF+ khay đảo bản chụp) <u>Bộ phận chọn thêm</u> : (quý khách có thể chọn 1 trong 2 bộ phận sau) - Bộ phận tự động chia bản chụp 20 khay ( 20 Bin sorter) - Bộ phận tự động chia bản chụp & ghim& đục lỗ 20 khay	1850 3500	11.000
07	Máy đa năng ABLE 3321 ( Photocopy và Fax + Printer ) ( 3 khay giấy+1 khay tay+bộ tự nạp bản gốc + bộ chia bản chụp điện tử ) <u>Bộ phận chọn thêm</u> : Bộ phận in	1800	8.500
08	XEROX 3030 ( Máy in kỹ thuật khổ A0 ) - Khổ giấy từ A4 đến A0 - Chiều dài tối đa 25m		11.600

( chú ý để sử dụng được ADF và SS quý khách phải mua 1 tray module)

@Bảo hành : ( Không tính vật tư tiêu hao : Drum , Mực )

- Máy đa năng ABLE/ Vivace 160 : 50.000 bản/12 tháng
- Vivace 250/340 : 70.000 bản / 12 tháng
- Vivace 450/455/550/670 : 120.000 bản / 12tháng
- Xerox máy in kỹ thuật khổ A0 : 3000 mét

Xin cảm ơn quý khách đã quan tâm và sử dụng sản phẩm của công ty chúng tôi.



## CÔNG TY THƯƠNG MẠI HAYKO

33A Lý Thường Kiệt, Hà Nội \* Tel : (84.4) 934 4882, 934 4524 \* Fax : (84.4) 934 4524

Ngày tháng năm 1999

### BẢO GIÁ

**Kính gửi :**

Chúng tôi xin gửi tới quý khách bảng các báo giá thiết bị sau:

TT	CHUNG LOẠI	SL	ĐV	ĐƠN GIÁ (USD)
01	Computer ASIAN Pentium 233MMX CPU : Intel 233MMX Mainboard : Intel TX98 with 512 Kb cache 32Mb SDRAM HDD: 4.3Gb, FDD: 1.44Mb Card SVGA S3 with 1Mb VRAM Monitor: Samsung 14"; Mouse, Keyboard	01	bộ	450
02	Computer ASIAN Celeron 333MHz CPU : Intel Celeron 333Mhz Mainboard : Intel 440LX with 512 Kb cache 32Mb SDRAM HDD: 4.3Gb, FDD: 1.44Mb Card SVGA S3 with 2Mb VRAM Monitor: Samsung 14"; Mouse, Keyboard	01	bộ	490
03	Computer ASIAN Pentium II 333MHz CPU : Intel Pentium II 333Mhz Mainboard : Intel BX with 512 Kb cache 32Mb SDRAM HDD: 4.3Gb, FDD: 1.44Mb Card AGP with 4Mb VRAM Monitor: Samsung 14"; Mouse, Keyboard	01	bộ	625
04	Computer ASIAN Pentium II 400MHz CPU : Intel Pentium II 400Mhz Mainboard : Intel BX with 512 Kb cache 32Mb SDRAM HDD: 4.3Gb, FDD: 1.44Mb Card AGP with 4Mb VRAM Monitor: Samsung 14"; Mouse, Keyboard	01	bộ	640
05	CD-Rom Acer 40X Soundcard Yamaha Speaker G660 - 240W	01	bộ	110
06	Printer LaserJet HP 1100 Speed: 8ppm, 600dpi, A4 Paper Size	01	cái	call

- Báo giá trên chưa bao gồm 10% VAT.
- Bảo hành 12 tháng cho các thiết bị trên.
- Lắp đặt và hướng dẫn sử dụng tận nơi.
- Thanh toán theo tỷ giá thị trường tự do tại thời điểm thanh toán.

*Xin cảm ơn quý khách hàng đã quan tâm và sử dụng sản phẩm của công ty*



## CÔNG TY THƯƠNG MẠI HAYKO

33A Lý Thường Kiệt, Hà Nội \* Tel : (84.4) 934 4882, 934 4524 \* Fax : (84.4) 934 4524

Date : 30 / 07 / 1999

### QUOTATION

To : Mr.T.KAMIJO

Add : 84 Tran Nhan Tong Str - Room number : 619

Tel : 8223535 - Fax: 8223555

We are please offer to you our quotation as follow :

No	Item	Qty	Unit Price (USD)	VAT 10% (USD)	Total (USD)
1	COMPUTER COMPAQ DESKPRO CELERON 366 CPU: INTEL Celeron 366 MHz Ram: 32 Mb SDimm HDD: 4.3GB Card Video 4Mb Monitor: COMPAQ 14" Keybaord, Mouse COMPAQ	01	900	90	990
2	COMPUTER COMPAQ DESKPRO PENTIUM II 333 CPU: INTEL Pentium II 333 MHz Ram: 32 Mb SDimm HDD: 4.3GB Card Video 4Mb Monitor: COMPAQ 14" Keybaord, Mouse COMPAQ	01	990	99	1089
3	COMPUTER COMPAQ DESKPRO PENTIUM II 350 CPU: INTEL Pentium II 350 MHz Ram: 32 Mb SDimm HDD: 4.3GB Card Video 4Mb Monitor: COMPAQ 14" Keybaord, Mouse COMPAQ	01	1020	102	1122
4	COMPUTER COMPAQ DESKPRO PENTIUM II 400 CPU: INTEL Pentium II 400 MHz Ram: 32 Mb SDimm HDD: 4.3GB Card Video 4Mb Monitor: COMPAQ 14" Keybaord, Mouse COMPAQ	01	1120	112	1232

5	<b>PRINTER LASERJET 1100</b> Speed: 8ppm; 600dpi; A4	01	420	42	462
6	<b>PRINTER LASERJET 1100A</b> Printer, Copier Speed: 8ppm; 600dpi; A4	01	530	53	583
7	<b>SOFTWARE</b> Microsoft Windows 98 Full CD-ROM	01	200	20	220
8	<b>SOFTWARE</b> Microsoft Office 97 Pro	01	600	60	660

- Method of payment: By cash, cheque, credit or transfer.
- Exchange rate: Average rate of selling price bank at the current day.
- Warranty: 03 years limited warranty for CPU INTEL and 01 year for other.