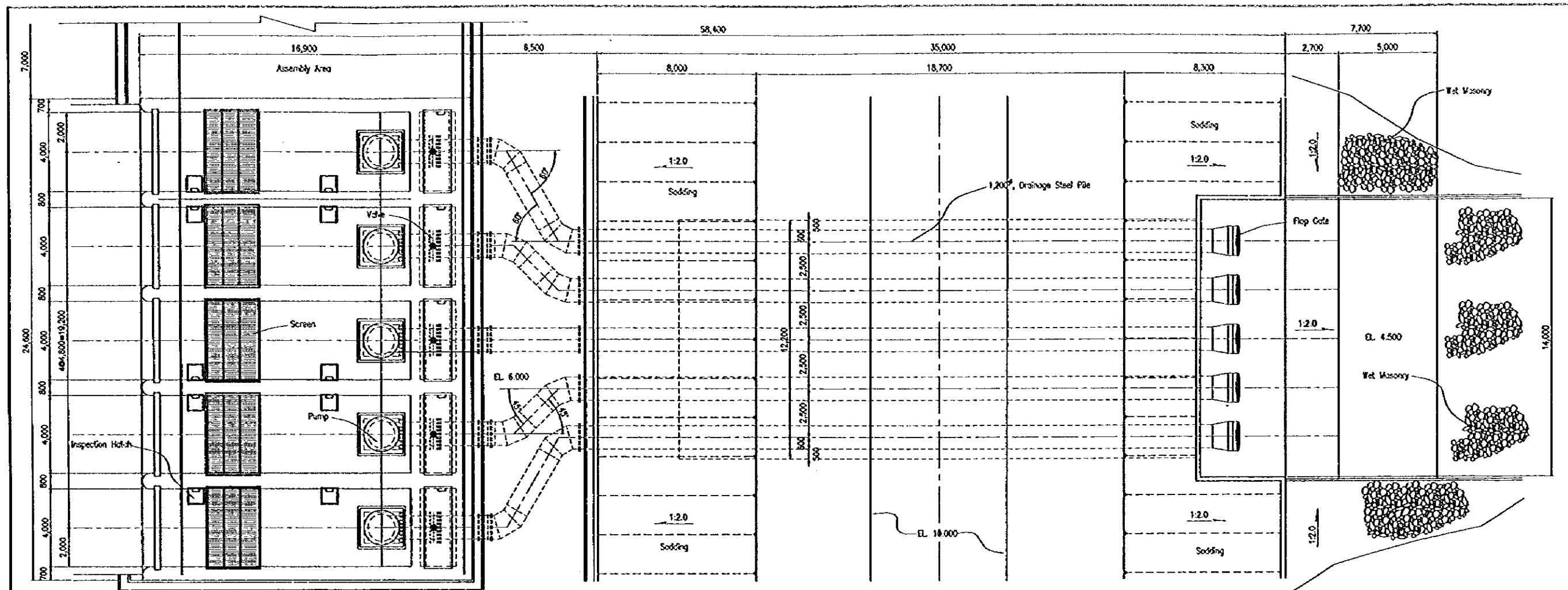
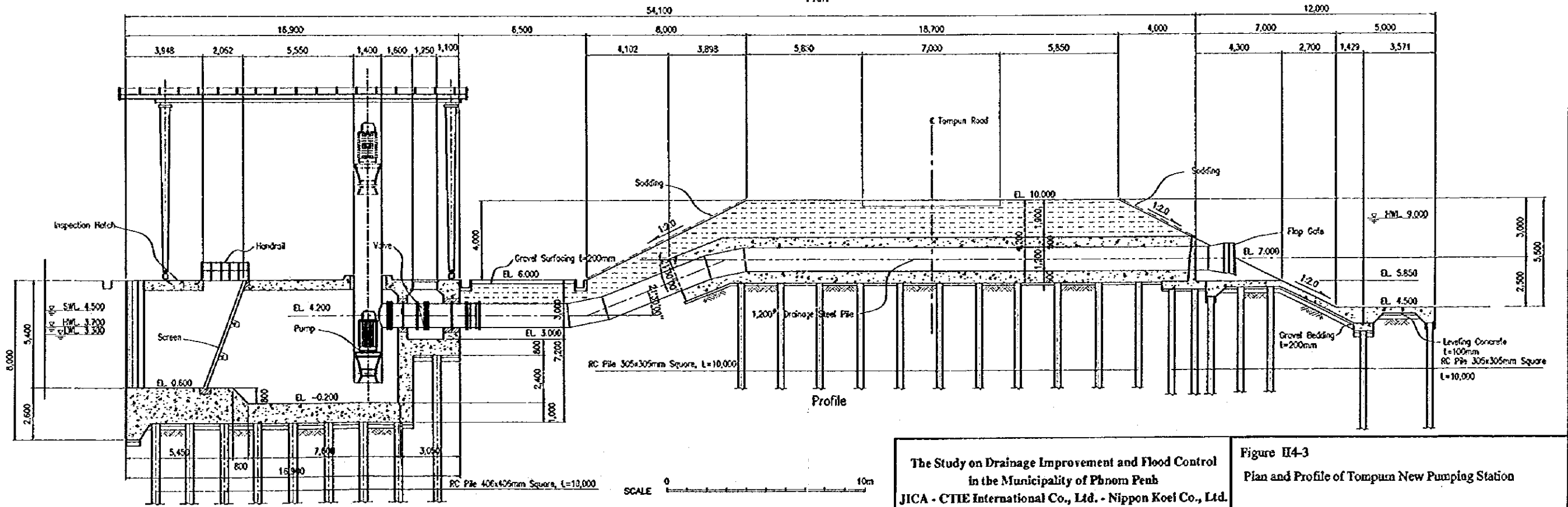


The Study on Drainage Improvement and Flood Control
 in the Municipality of Phnom Penh
 JICA - CTIE International Co., Ltd. - Nippon Koei Co., Ltd.

Figure II-4-2
 General Plan of Tompun New Pump Station



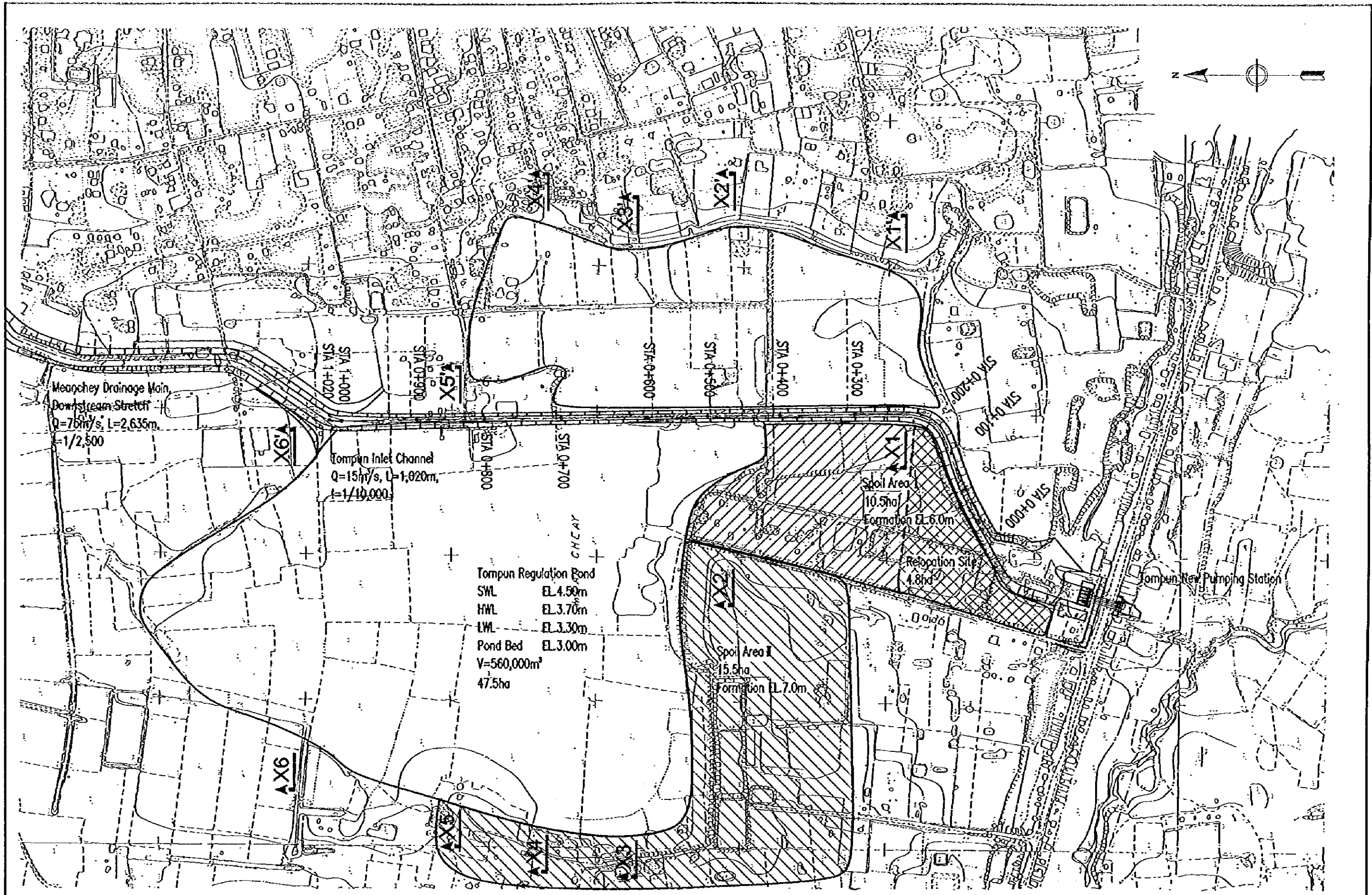
Plan



Profile

The Study on Drainage Improvement and Flood Control
in the Municipality of Phnom Penh
JICA - CTIE International Co., Ltd. - Nippon Koei Co., Ltd.

Figure H-4-3
Plan and Profile of Tompun New Pumping Station



Meanchey Drainage Main
Downstream Stretch
Q=75m³/s, L=2,635m,
t=1/2,500

Tompun Inlet Channel
Q=15m³/s, L=1,020m,
t=1/10,000

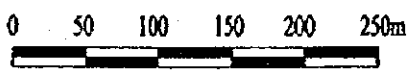
Tompun Regulation Pond
SWL EL.4.50m
HWL EL.3.70m
LWL EL.3.30m
Pond Bed EL.3.00m
V=560,000m³
47.5ha

Spoil Area II
10.5ha
Formation EL.6.0m

Relocation Site
4.8ha

Spoil Area I
15.5ha
Formation EL.7.0m

Tompun New Pumping Station



The Study on Drainage Improvement and Flood Control
in the Municipality of Phnom Penh
JICA-CTIE International Co., Ltd.-Nippon Koei Co., Ltd.

Figure II-4-4
Plan of Tompun Inlet Channel and Regulation Pond



Tompun Regulation Pond
 SWL 4.50m
 HWL 3.70m
 LWL 3.30m
 Pond Bed EL.3.00m
 $V=560,000m^3$
 $A=47.5ha$

Tompun Inlet Channel
 $Q=15m^3/s$, $L=1,020m$
 $I=1/10,000$

Meanchey Drainage Main, Downstream Stretch
 $Q=75m^3/s$, $L=2,635m$, $I=1/2,500$

Dike Crest EL. 5.00m

Bridge $L=34m$, $B=5.0m$

STA 0+000

STA 0+100

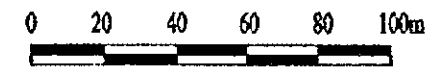
STA 0+192
 STA 0+200

STA 0+300

STA 0+400

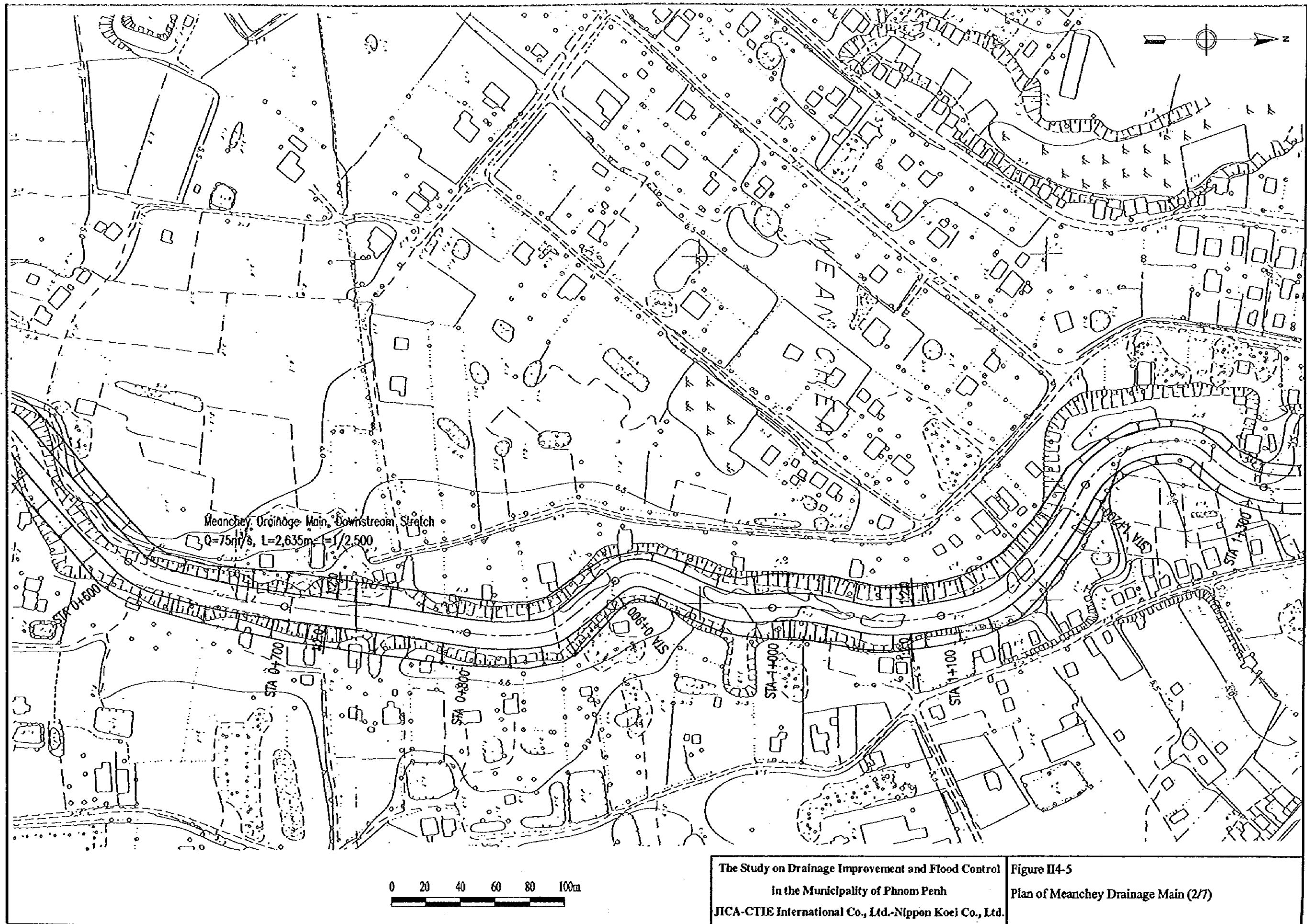
STA 0+500

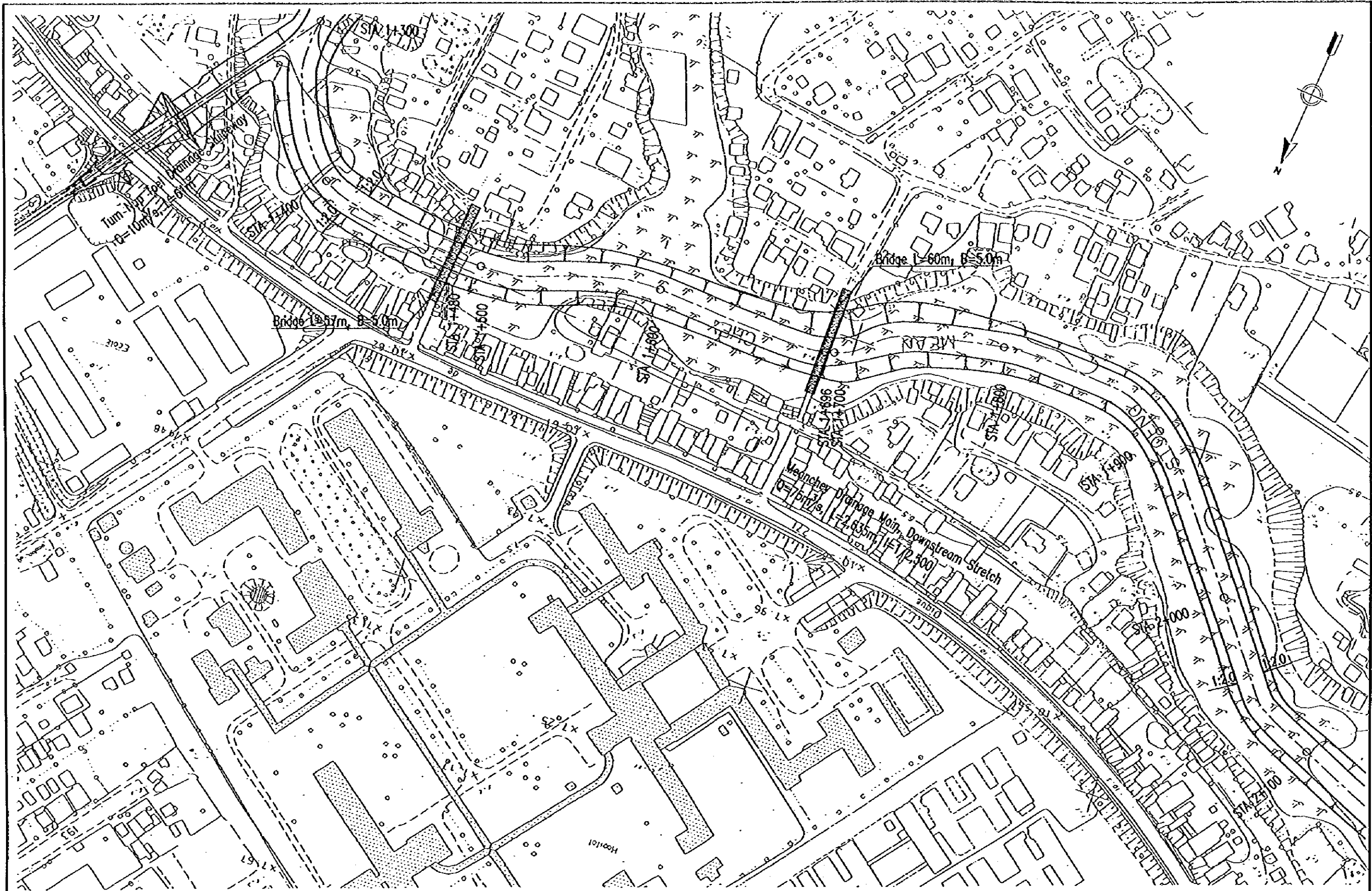
STA 0+600



The Study on Drainage Improvement and Flood Control
 in the Municipality of Phnom Penh
 JICA-CTIE International Co., Ltd.-Nippon Koei Co., Ltd.

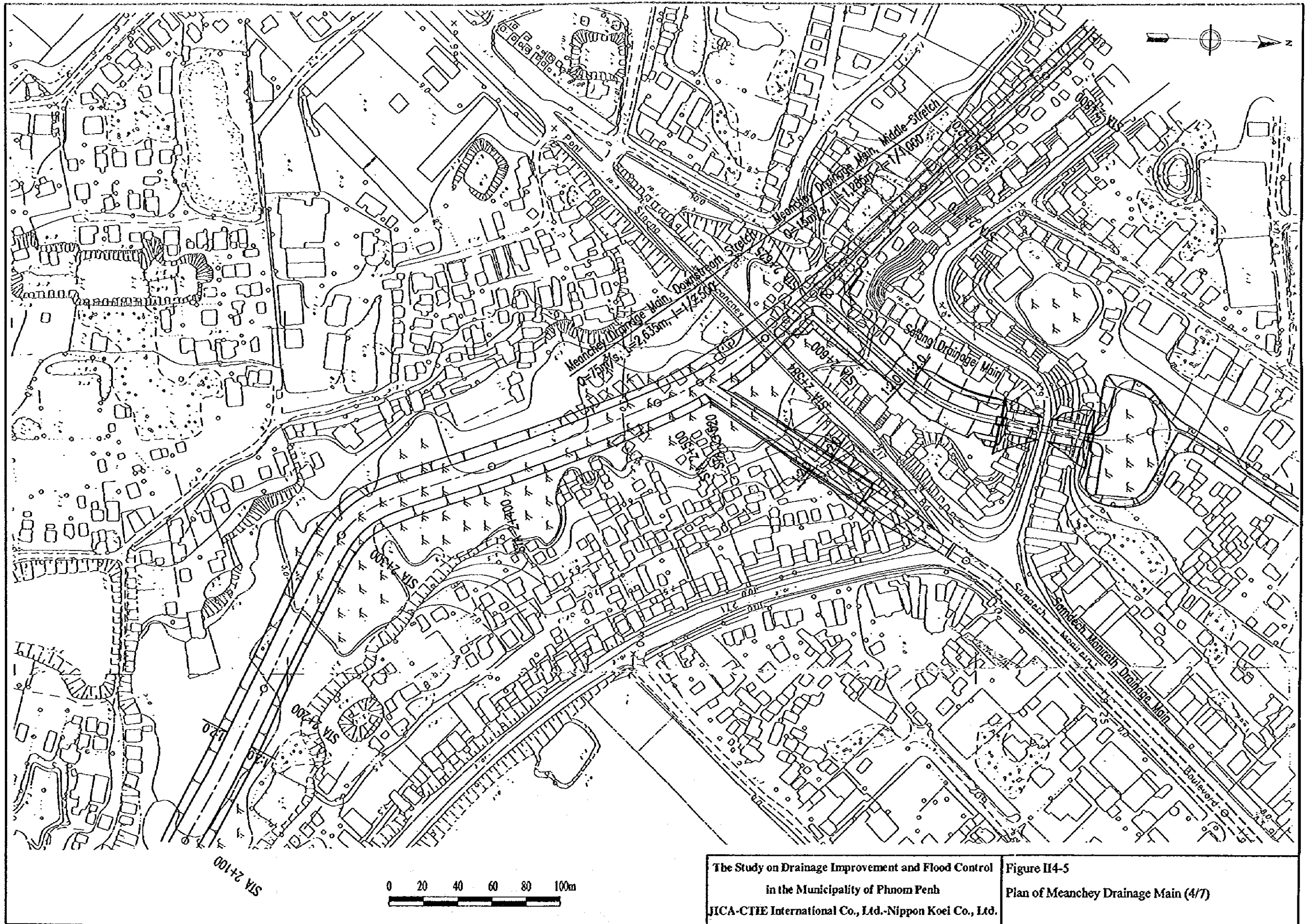
Figure II-4-5
 Plan of Meanchey Drainage Main (1/7)





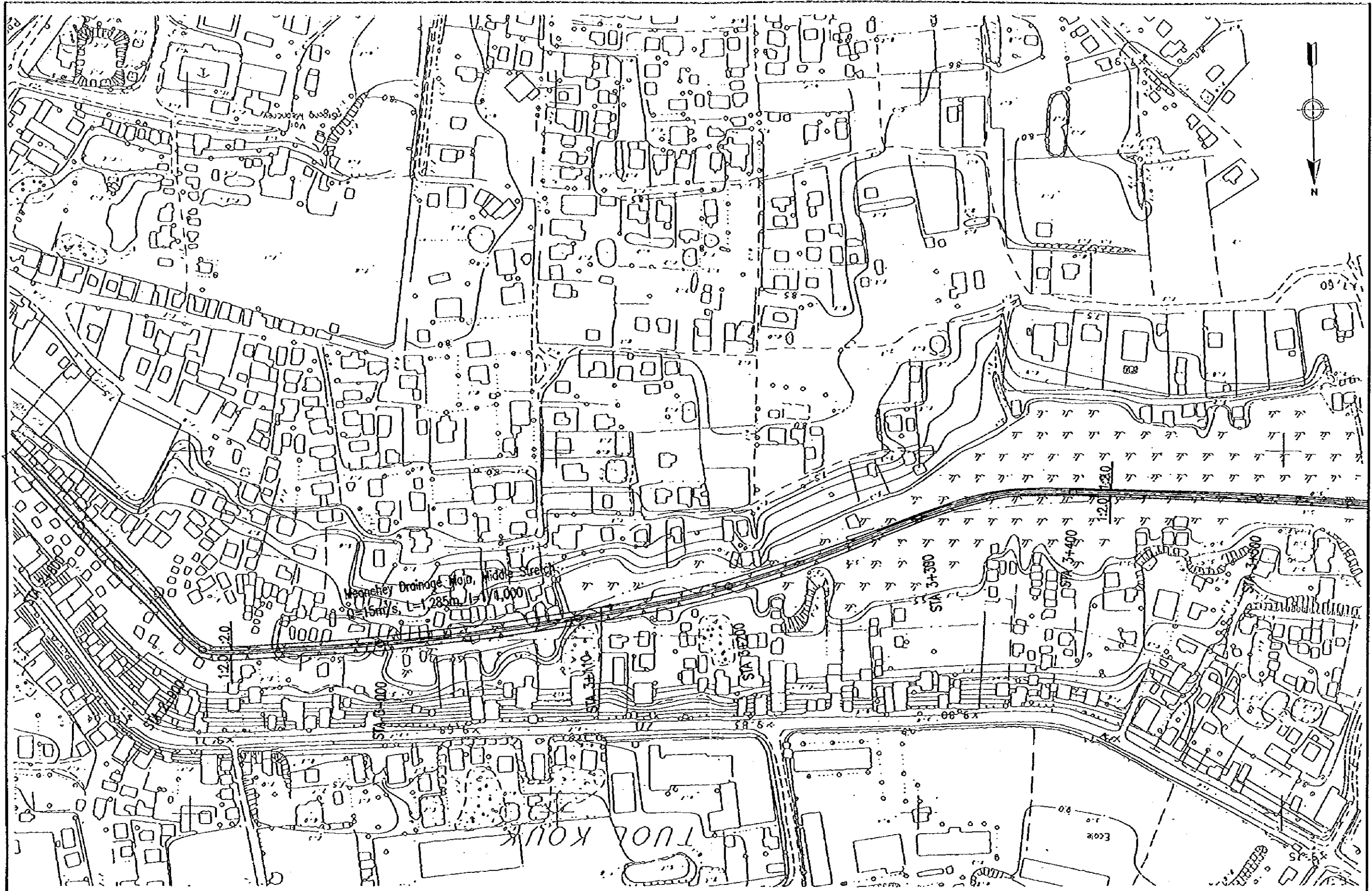
The Study on Drainage Improvement and Flood Control
 in the Municipality of Phnom Penh
 JICA-CTIE International Co., Ltd.-Nippon Koei Co., Ltd.

Figure II-4-5
 Plan of Meanchey Drainage Main (3/7)



The Study on Drainage Improvement and Flood Control
 in the Municipality of Phnom Penh
 JICA-CTIE International Co., Ltd.-Nippon Koei Co., Ltd.

Figure II-4-5
 Plan of Meanchey Drainage Main (4/7)



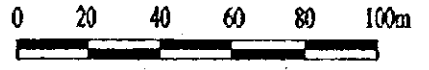
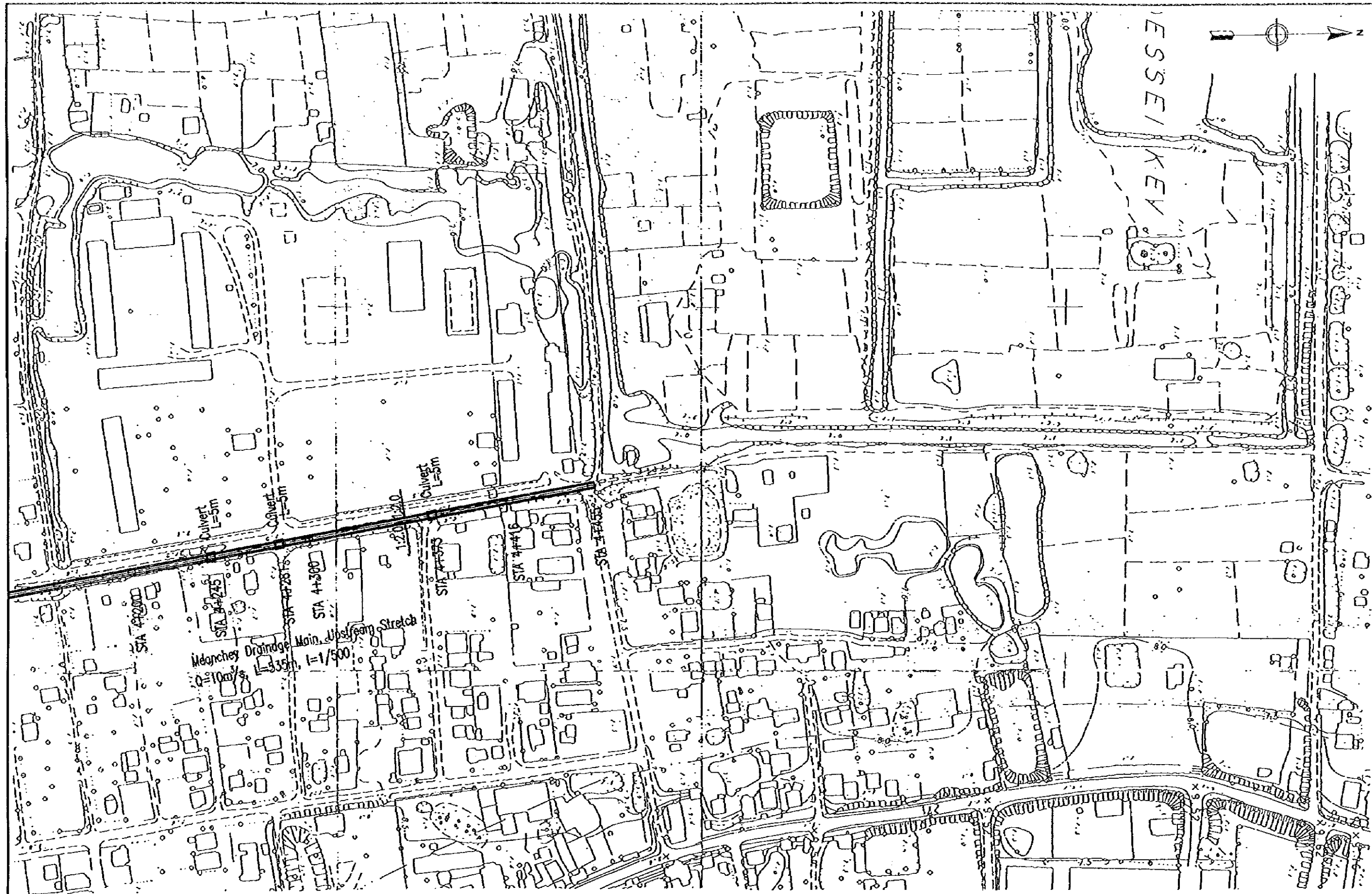
The Study on Drainage Improvement and Flood Control
 in the Municipality of Phnom Penh
 JICA-CTIE International Co., Ltd.-Nippon Koei Co., Ltd.

Figure II-4-5
 Plan of Meanchey Drainage Main (S/T)



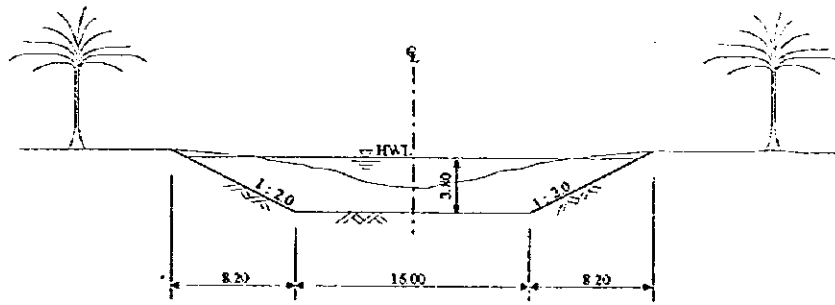
The Study on Drainage Improvement and Flood Control
 in the Municipality of Phnom Penh
 JICA-CTIE International Co., Ltd.-Nippon Koei Co., Ltd.

Figure II-4-5
 Plan of Meanchey Drainage Main (6/7)

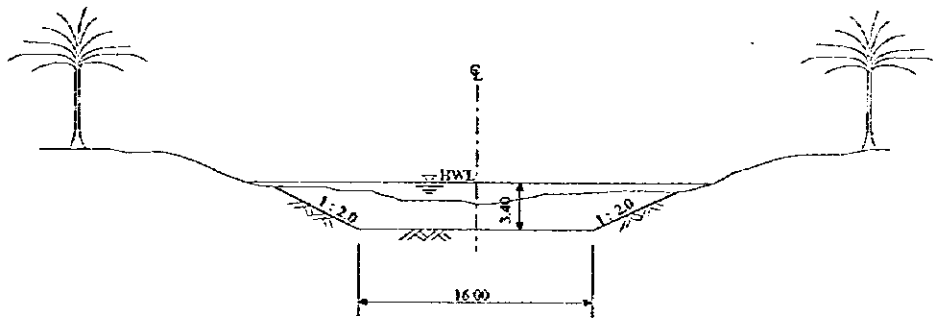


The Study on Drainage Improvement and Flood Control
 in the Municipality of Phnom Penh
 JICA-CTIE International Co., Ltd.-Nippon Koei Co., Ltd.

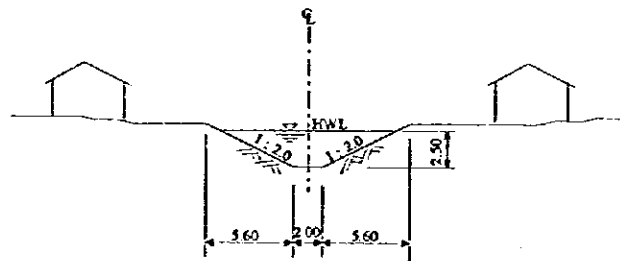
Figure II-4-5
 Plan of Meanchey Drainage Main (7/7)



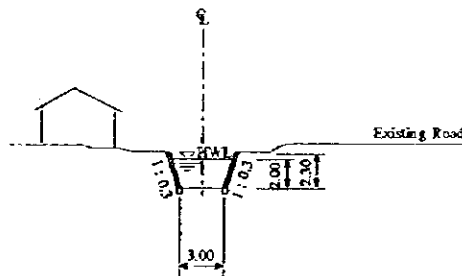
Downstream Stretch, Sta. 0+000 to Sta. 1+100



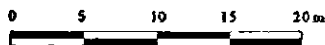
Downstream Stretch, Sta. 1+100 to Sta. 2+635



Middle Stretch, Sta. 2+635 to Sta. 3+920

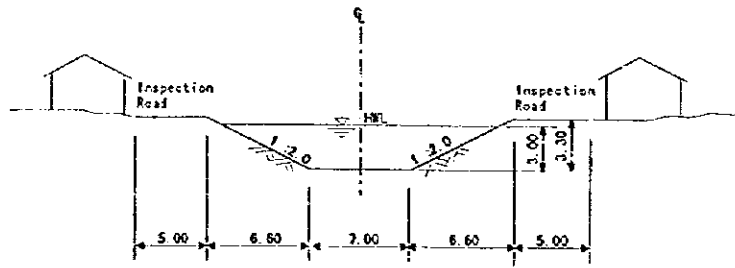


Upstream Stretch, Sta. 3+920 to Sta. 4+455

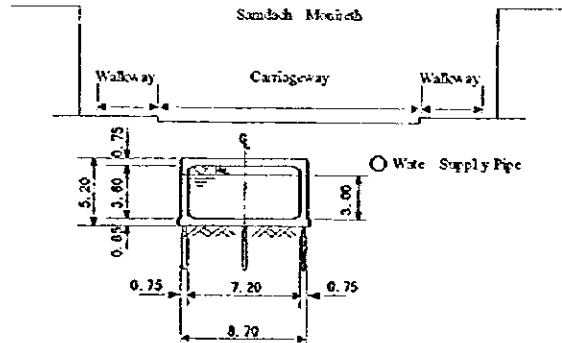


The Study on Drainage Improvement and Flood Control
in the Municipality of Phnom Penh
JICA-CTIE International Co., Ltd. -Nippon Koei Co., Ltd.

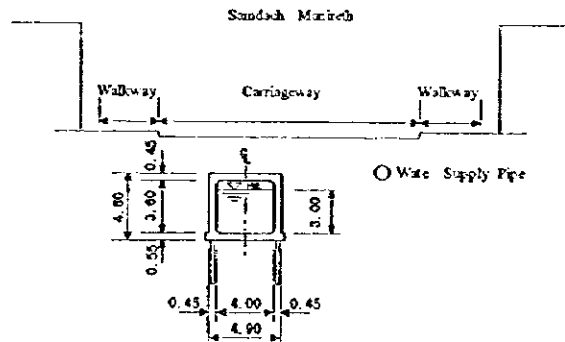
Figure II-4-6
Standard Cross-sections of Meanchey Drainage Main



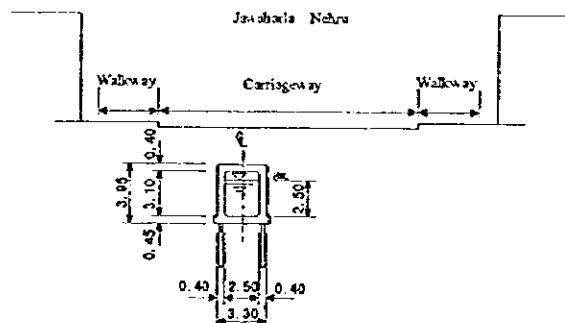
Samdach Monireth Outlet, Meanchey confluence to Sta. 0+050



Samdach Monireth Downstream Stretch, Sta. 0+050 to Sta. 1+675



Samdach Monireth Upstream Stretch, Sta. 1+675 to Sta. 2+390



Jawaharlal Nehru, Samdach Monireth Confluence to Sta. 1+160



The Study on Drainage Improvement and Flood Control
in the Municipality of Phnom Penh
JICA-CTIE International Co., Ltd. -Nippon Koei Co., Ltd.

Figure II-4-7
Standard Cross-sections of Samdach Monireth and
Jawaharlal Nehru Drainage Mains

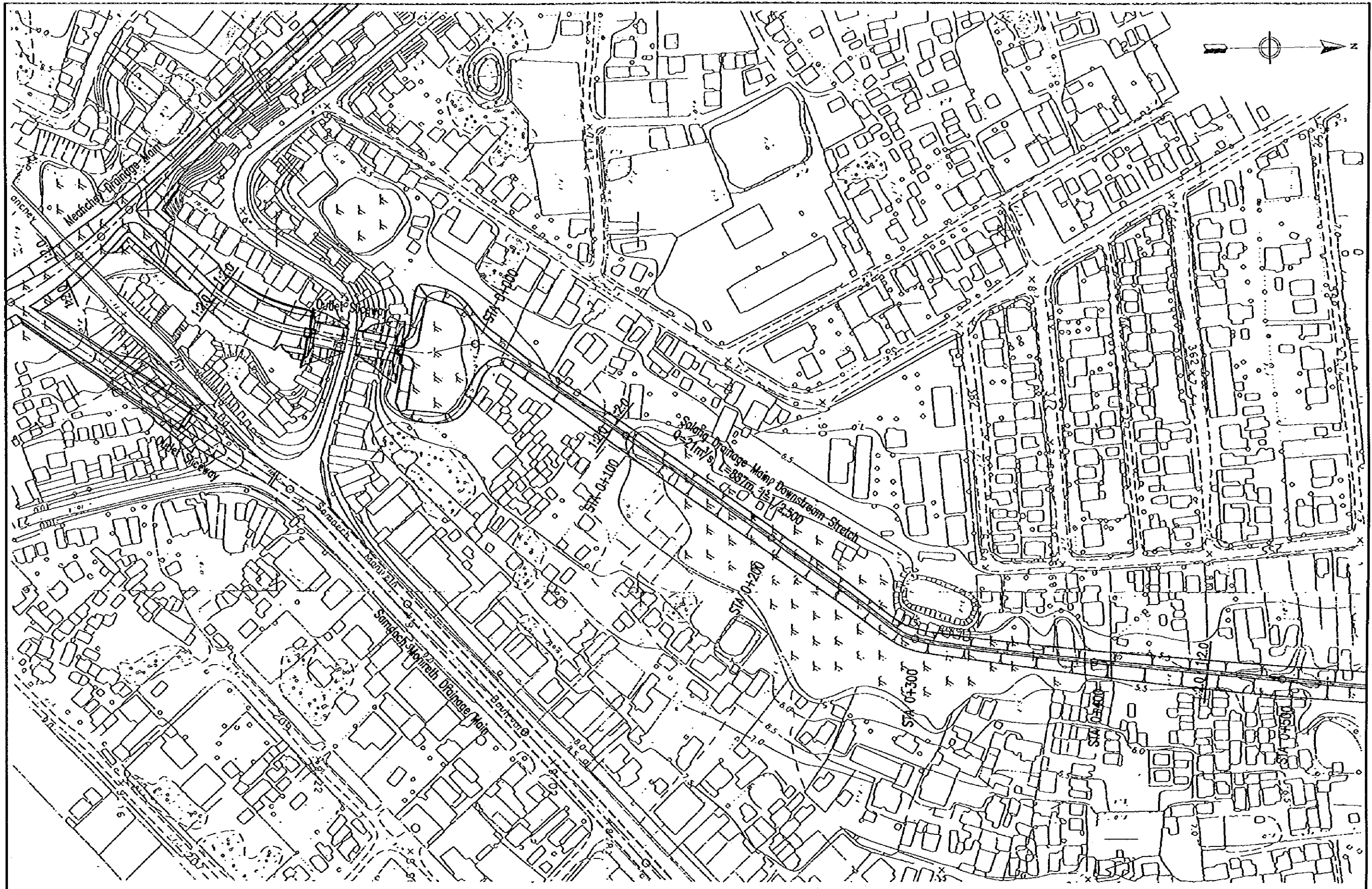
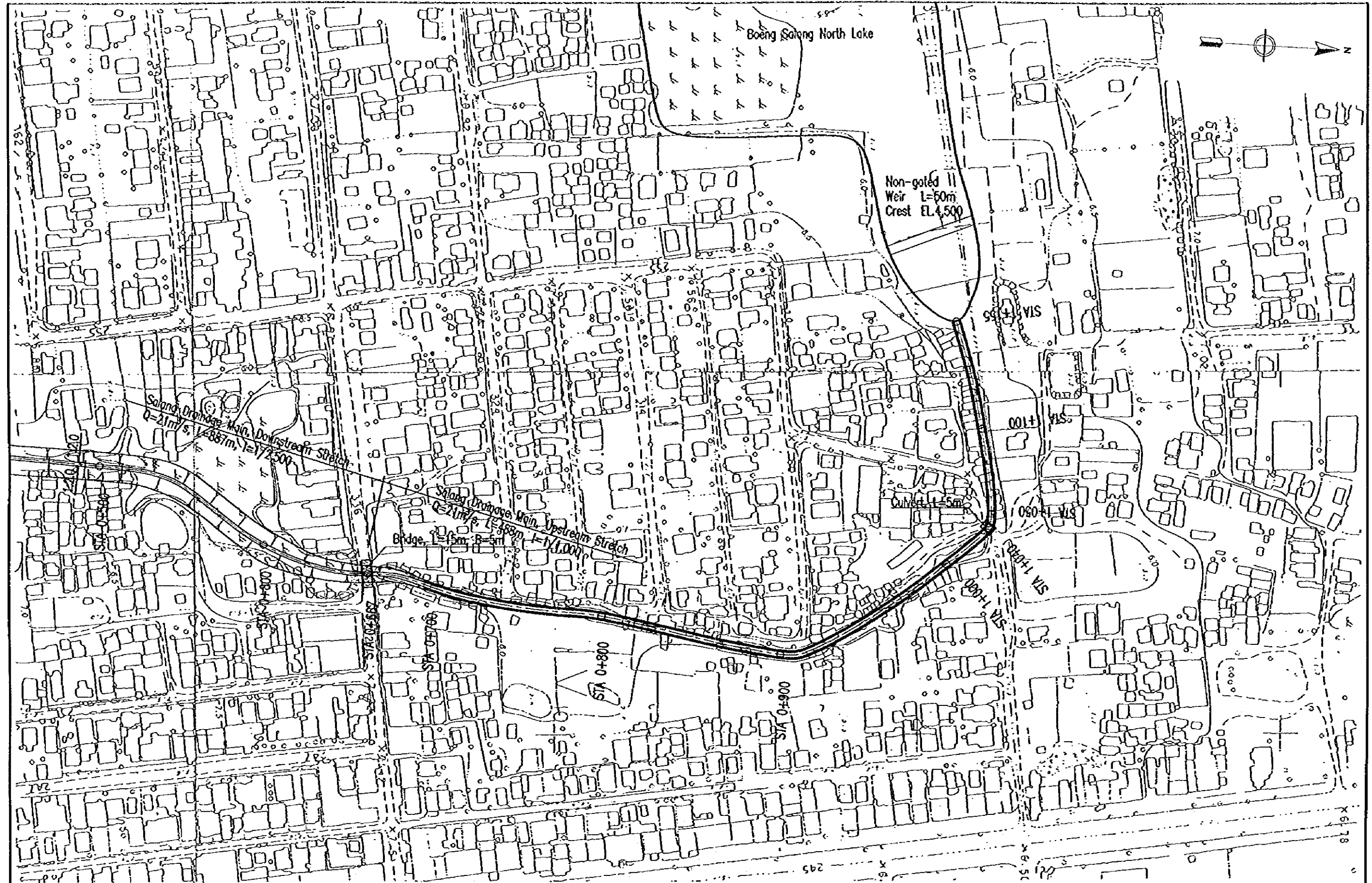
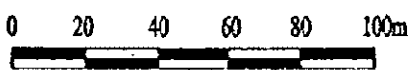
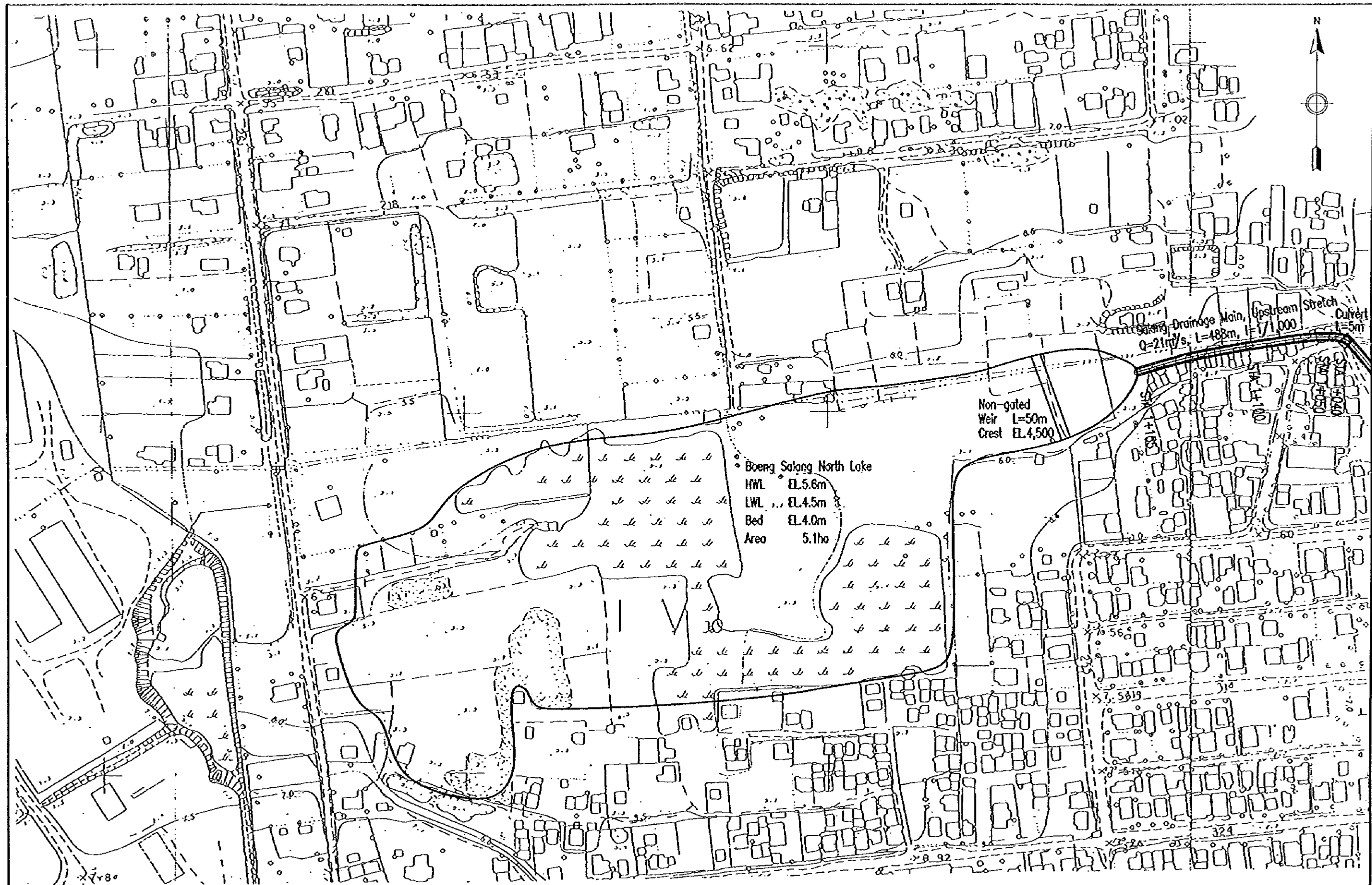


Figure II-4-8
 Plan of Salang Drainage Main (1/3)



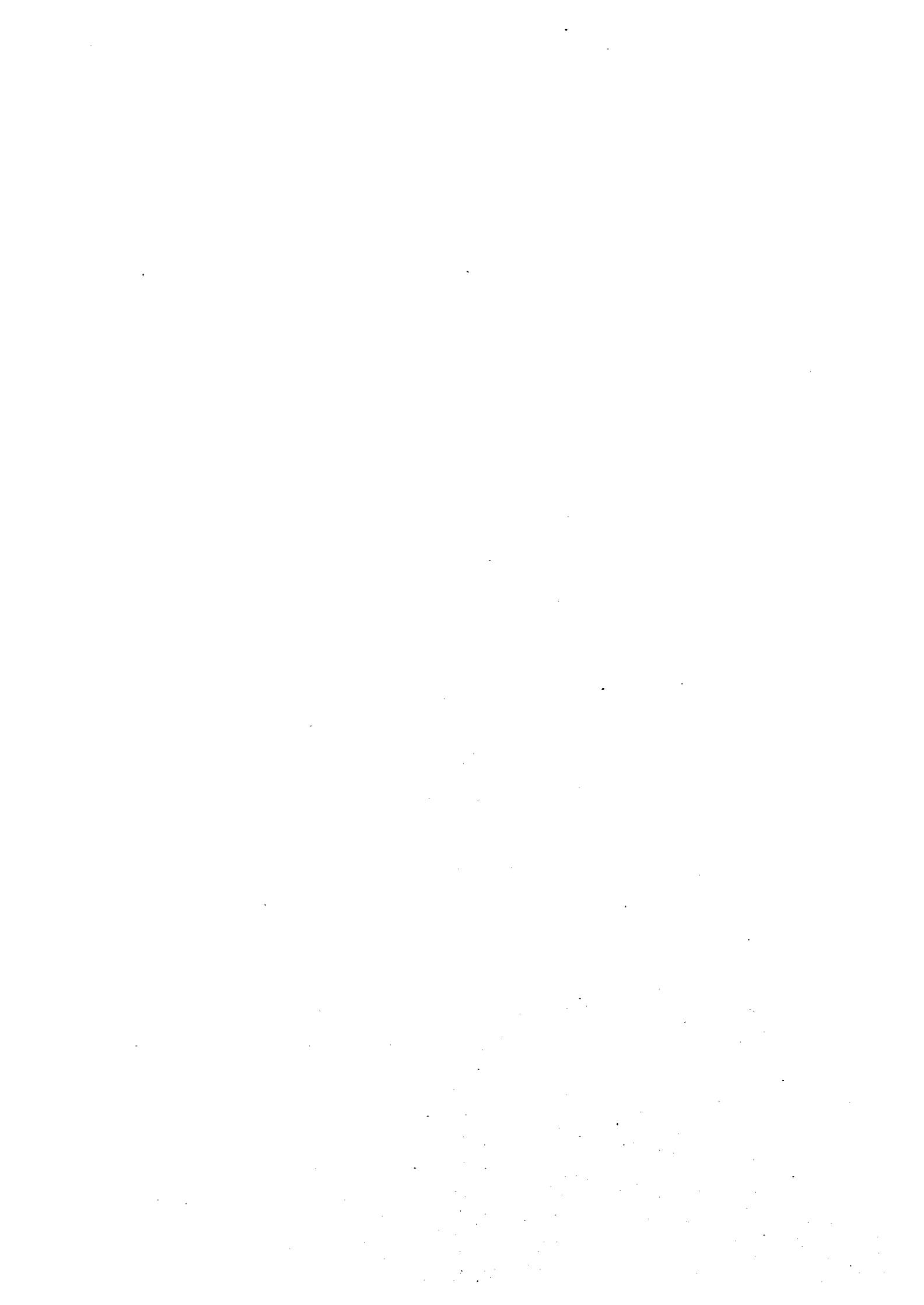
The Study on Drainage Improvement and Flood Control
 in the Municipality of Phnom Penh
 JICA-CTIE International Co., Ltd.-Nippon Koei Co., Ltd.

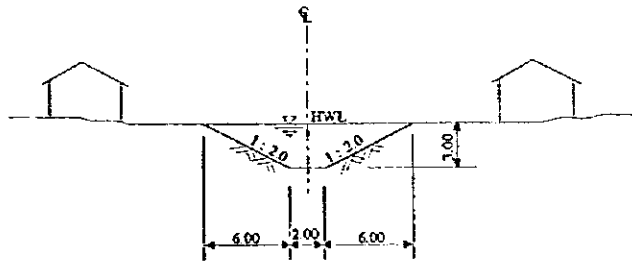
Figure II-4-8
 Plan of Salang Drainage Main (2/3)



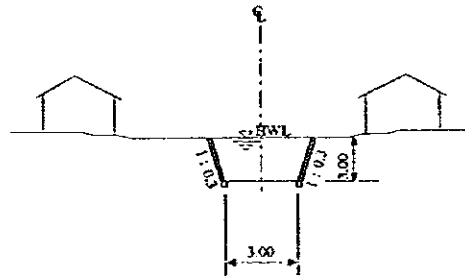
The Study on Drainage Improvement and Flood Control
 in the Municipality of Phnom Penh
 JICA-CTIE International Co., Ltd.-Nippon Koei Co., Ltd.

Figure II-4-8
 Plan of Salang Drainage Main (3/3)

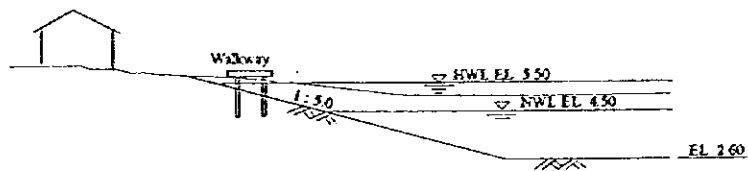




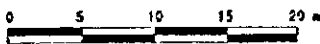
Downstream Stretch, Meanchey Confluence to Sta. 8+070



Upstream Stretch, Sta. 8+070 to Sta. 13+075



North Lake of Boeng Salang



The Study on Drainage Improvement and Flood Control
in the Municipality of Phnom Penh
JICA-CTIE International Co., Ltd. -Nippon Koei Co., Ltd.

Figure II-4-9
Standard Cross-sections of Salang Drainage Main

II-F-33







JICA