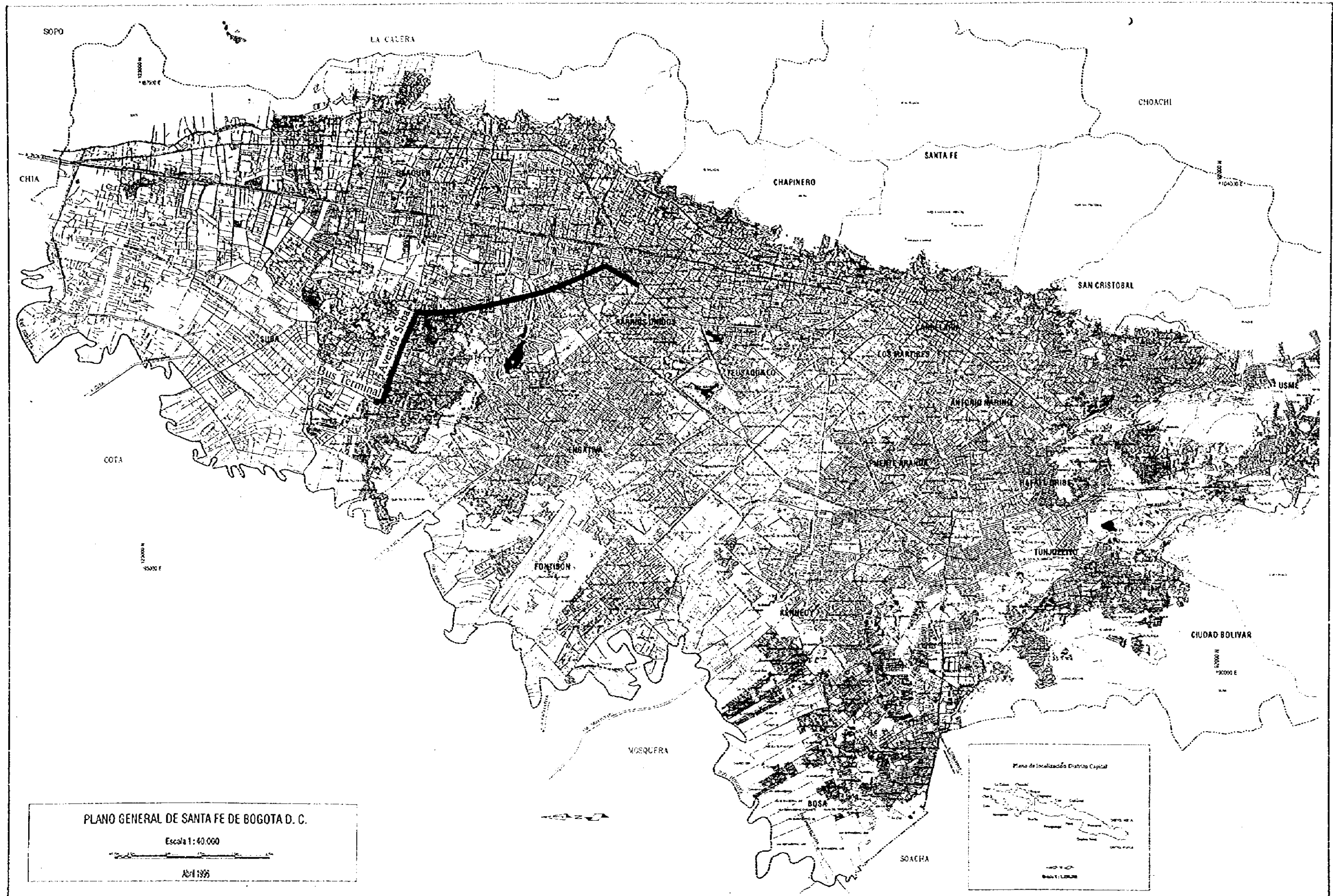
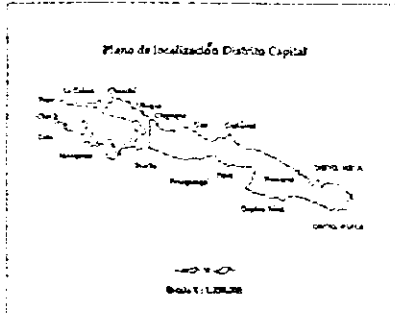


Avenida Suba

	SANTA FE DE BOGOTA THE REPUBLIC OF COLOMBIA	JAPAN INTERNATIONAL COOPERATION AGENCY (JICA)	THE FEASIBILITY STUDY ON THE PROJECT OF HIGHWAY AND BUS-LANE OF SANTA FE DE BOGOTA IN THE REPUBLIC OF COLOMBIA	
			DATA SCALE	DWG No 83 PAGE No



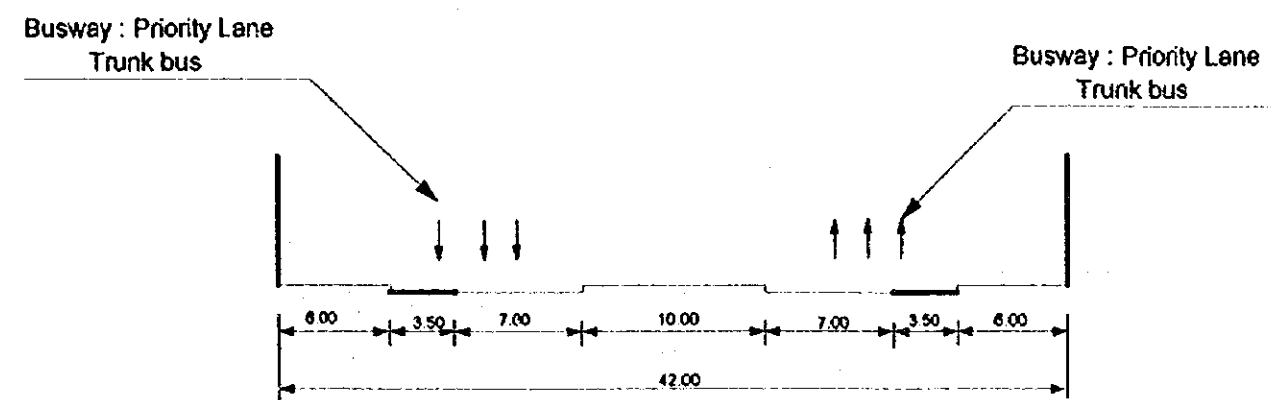
PLANO GENERAL DE SANTA FE DE BOGOTA D. C.
 Escala 1:40.000
 Abril 1995



<p>Avenida Suba. Location Map</p>	<p>SANTA FE DE BOGOTA THE REPUBLIC OF COLOMBIA</p>	<p>JAPAN INTERNATIONAL COOPERATION AGENCY (JICA)</p>	<p>THE FEASIBILITY STUDY ON THE PROJECT OF HIGHWAY AND BUS-LANE OF SANTA FE DE BOGOTA IN THE REPUBLIC OF COLOMBIA</p>
		<p>DATA SCALE</p>	<p>DWG No. 84 PAGE No. 10-1</p>

TYPICAL CROSS SECTION : AVENIDA SUBA

Section : Cra 104 - Av 81



TYPICAL CROSS SECTION:
AV SUBA

SANTA FE DE BOGOTA
THE REPUBLIC OF COLOMBIA

JAPAN INTERNATIONAL
COOPERATION AGENCY
(JICA)

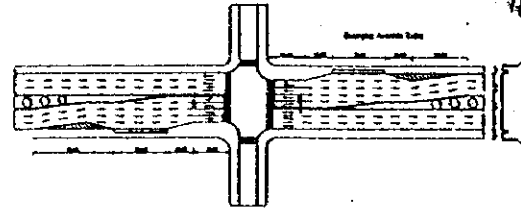
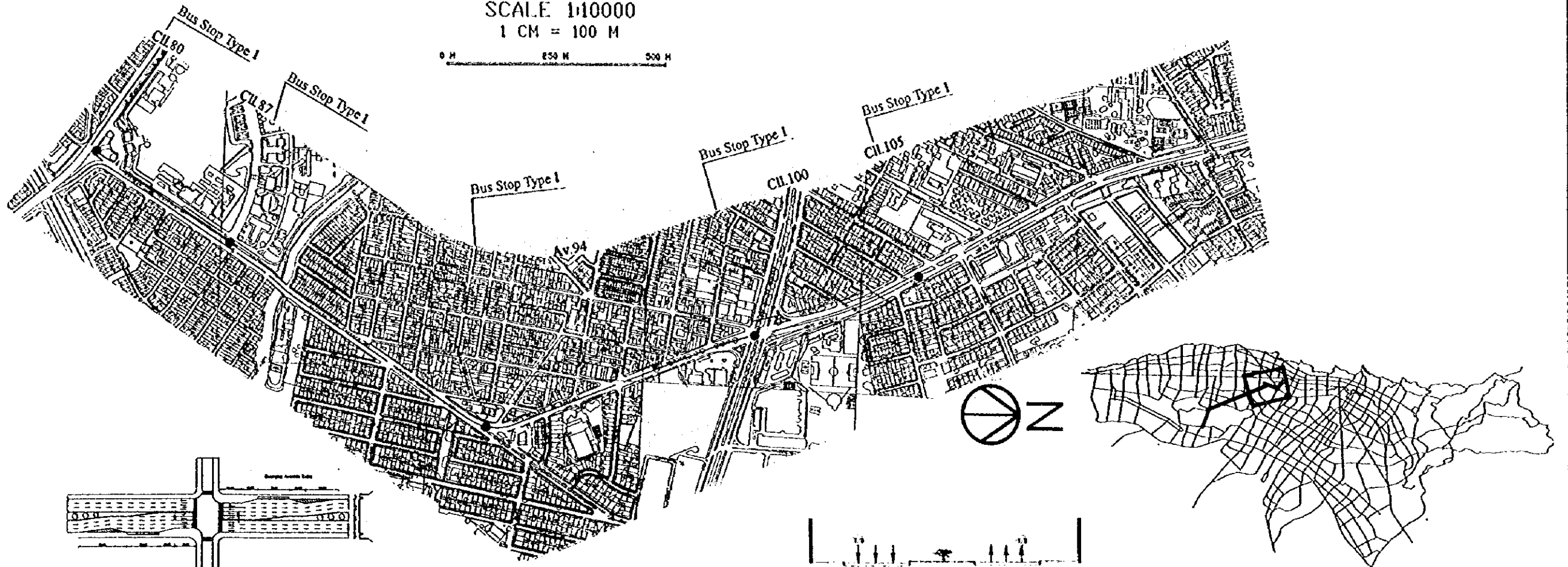
DATA
SCALE 1:400

THE FEASIBILITY STUDY ON THE PROJECT OF HIGHWAY AND BUS-LANE
OF SANTA FE DE BOGOTA IN THE REPUBLIC OF COLOMBIA

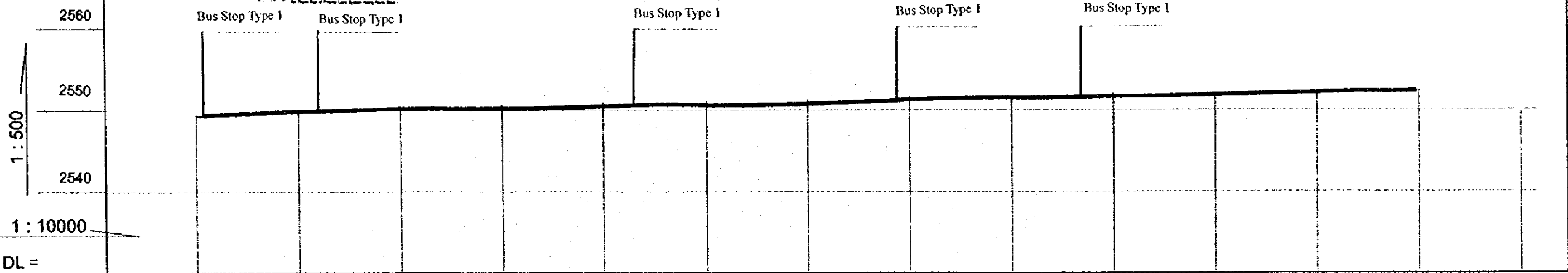
DWG No 85
PAGE No 10-2

SCALE 1:10000
1 CM = 100 M

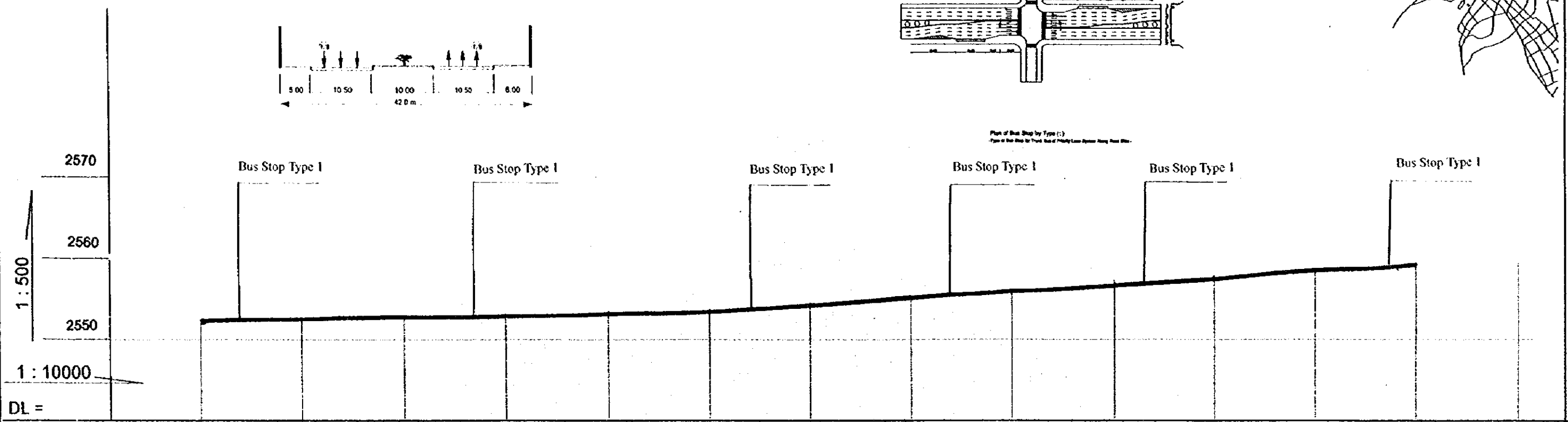
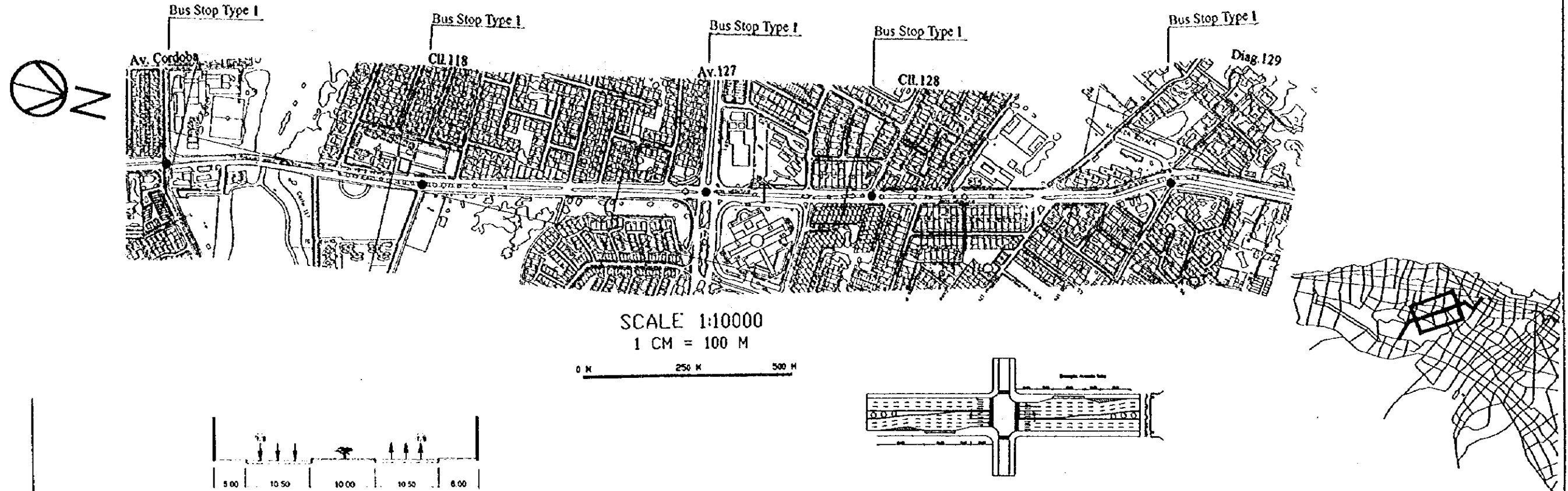
0 M 50 M 100 M



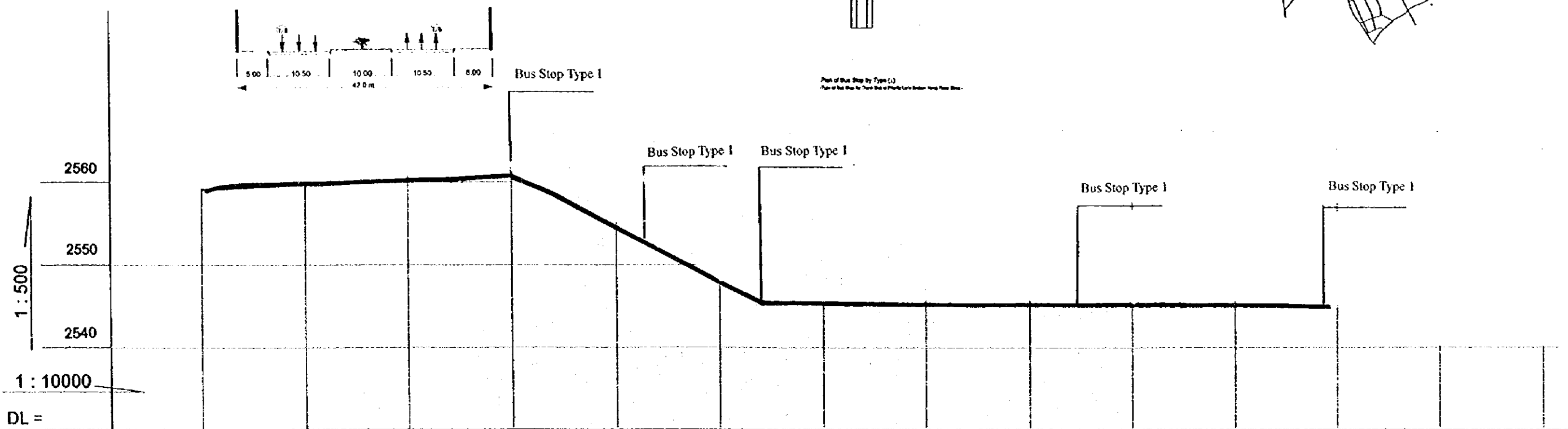
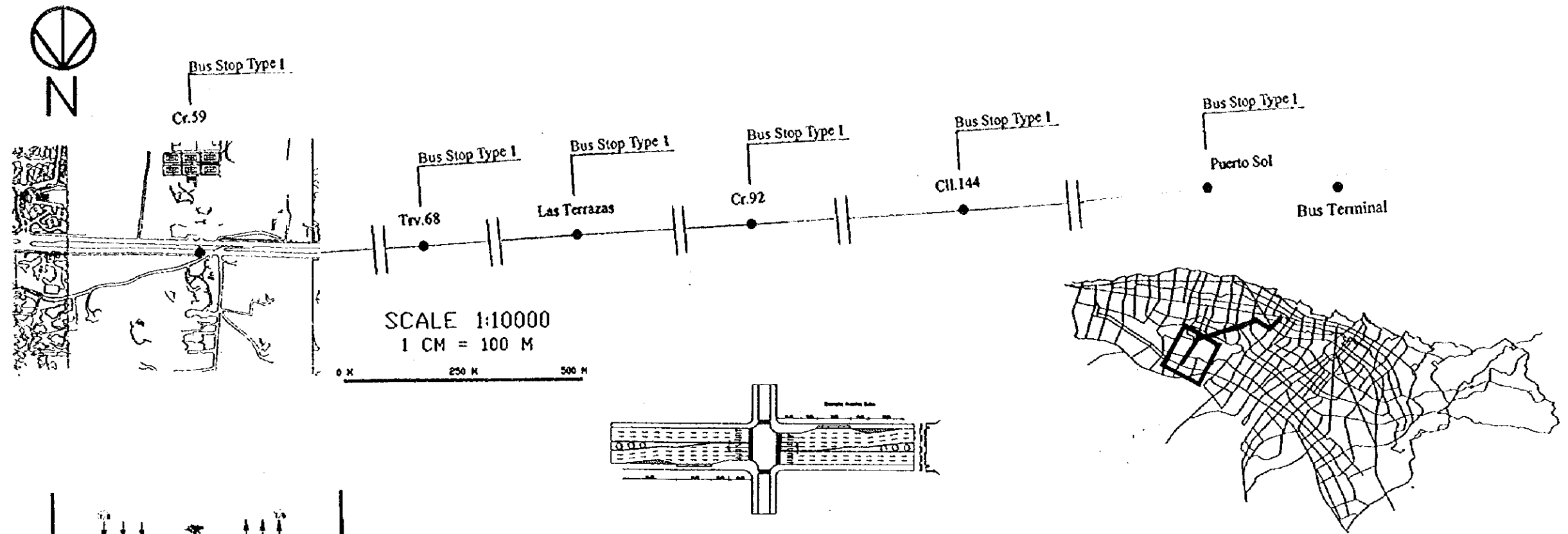
Plan of Bus Stop by Type 1



Gradient	Same as existing ground											
Proposed Height	Same as existing ground											
Ground Level	2540.32	2540.70	2550.20	2550.27	2550.53	2550.50	2550.58	2550.34	2550.52	2550.59	2550.57	2550.49
Number	10+000	10+200	10+500	10+700	11+000	11+200	11+400	11+700	12+000	12+200	12+400	12+600



Gradient	Same as existing ground												
Proposed Height	Same as existing ground												
Ground Level	10+000 2562.47	10+200 2562.48	10+400 2562.71	10+600 2562.84	10+800 2563.29	11+000 2563.47	11+200 2564.42	11+400 2565.19	11+600 2565.89	11+800 2566.71	12+000 2567.76	12+200 2568.33	12+400 2568.19
Number													



Gradient	Same as existing ground								
Proposed Height	Same as existing ground								
Ground Level	10+000-2566.18	10+050-2566.77	10+000-2560.28	10+750-2560.71	10+000-2561.81	10+000-2562.48	10+000-2563.01	10+750-2567.88	10+000-2561.28
Number									

Avenida 127

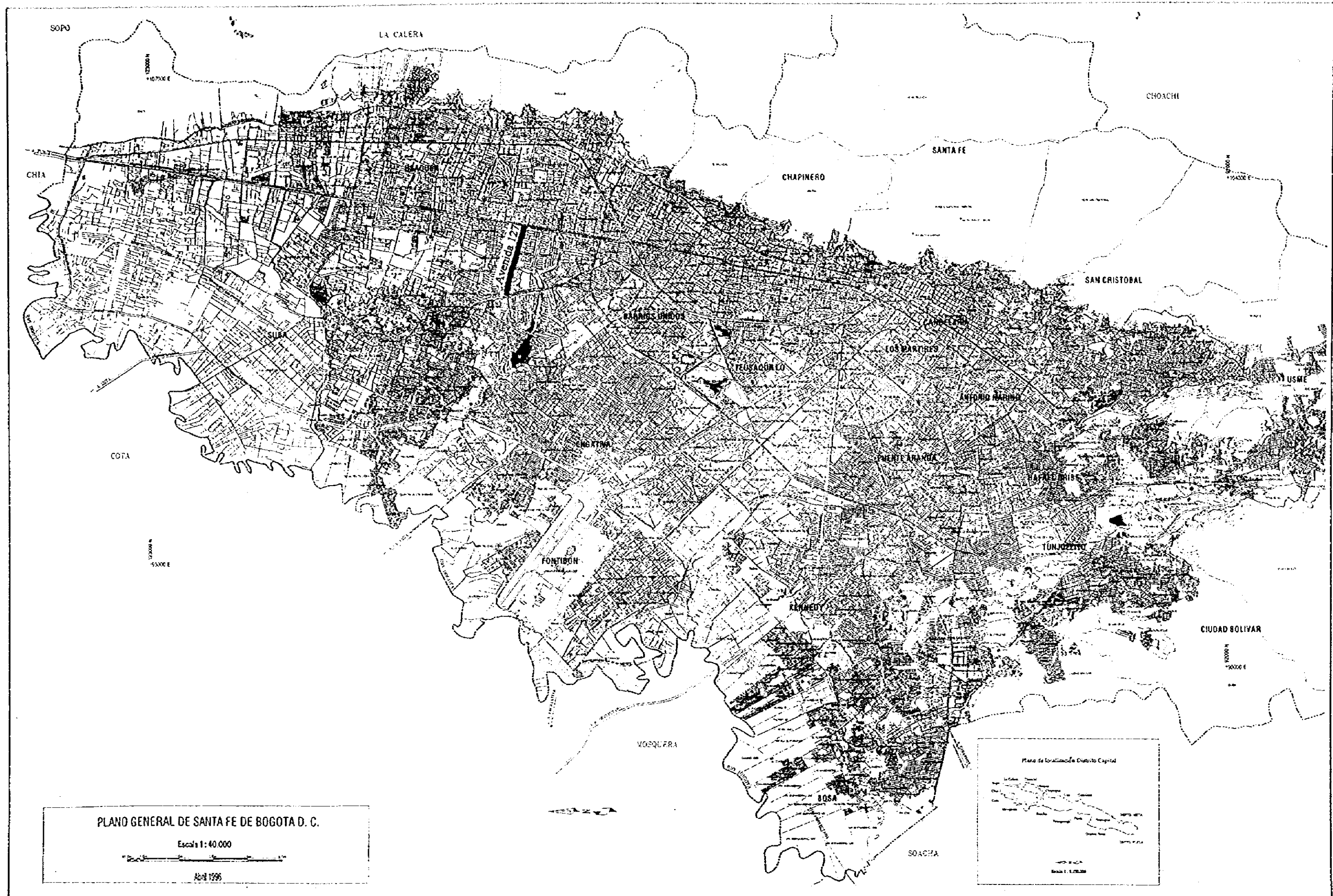
SANTA FE DE BOGOTA
THE REPUBLIC OF COLOMBIA

JAPAN INTERNATIONAL
COOPERATION AGENCY
(JICA)

DATA
SCALE

THE FEASIBILITY STUDY ON THE PROJECT OF HIGHWAY AND BUS-LANE
OF SANTA FE DE BOGOTA IN THE REPUBLIC OF COLOMBIA

DWG No 89
PAGE No



Avenida 127. Location Map

SANTA FE DE BOGOTA
THE REPUBLIC OF COLOMBIA

JAPAN INTERNATIONAL
COOPERATION AGENCY
(JICA)

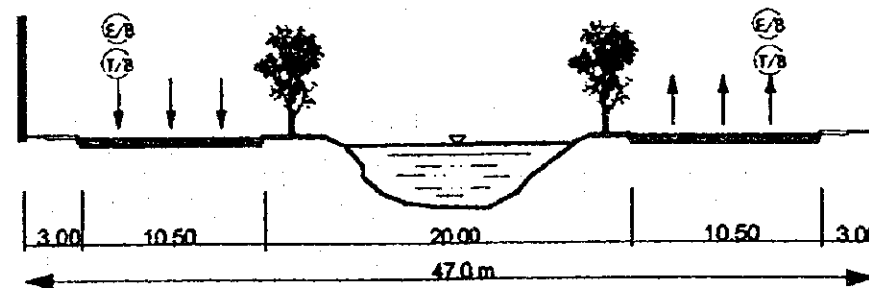
THE FEASIBILITY STUDY ON THE PROJECT OF HIGHWAY AND BUS-LANE
OF SANTA FE DE BOGOTA IN THE REPUBLIC OF COLOMBIA

DATA
SCALE

DWG No. 90
PAGE No. 11-1

TYPICAL CROSS SECTION : Avenida 127

Section :



TYPICAL CROSS SECTION:
Avenida 127

SANTA FE DE BOGOTA
THE REPUBLIC OF COLOMBIA

JAPAN INTERNATIONAL
COOPERATION AGENCY
(JICA)

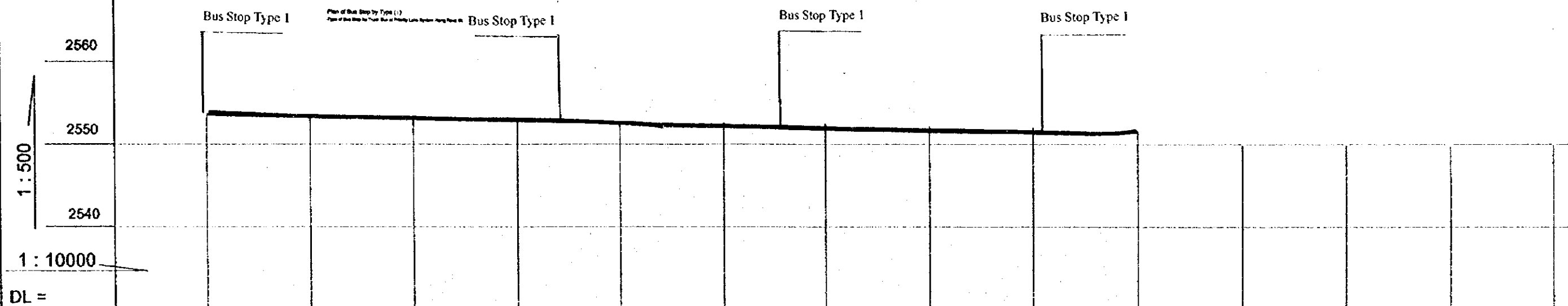
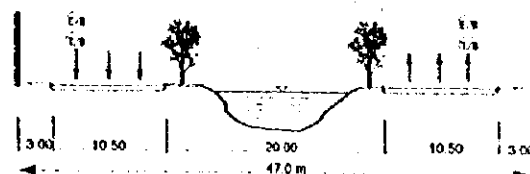
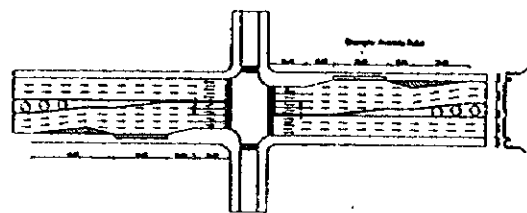
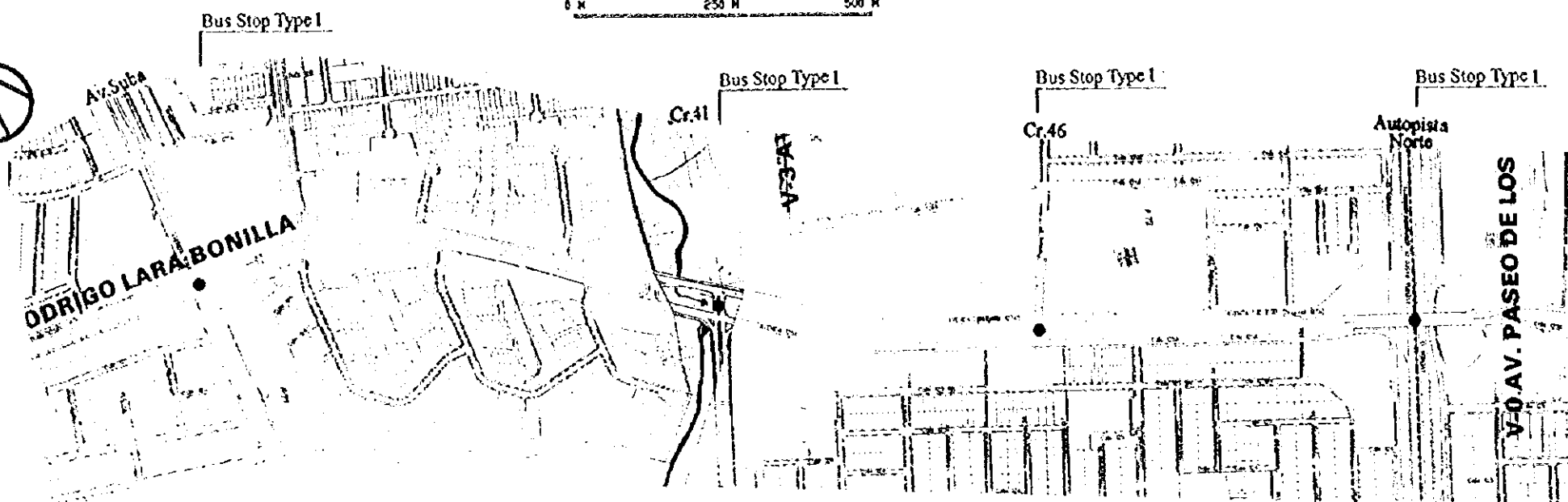
THE FEASIBILITY STUDY ON THE PROJECT OF HIGHWAY AND BUS-LANE
OF SANTA FE DE BOGOTA IN THE REPUBLIC OF COLOMBIA

DATA
SCALE 1:400

DWG No 91
PAGE No 11-2

SCALE 1:10000
1 CM = 100 M

0 M 250 M 500 M



Gradient	Same as existing ground									
Proposed Height	Same as existing ground									
Ground Level	2560.00	2559.44	2558.22	2556.00	2553.79	2552.58	2551.38	2550.15	2548.94	2547.70
Number	10+000	10+200	10+400	10+600	10+800	11+000	11+200	11+400	11+600	11+800

Calle 72

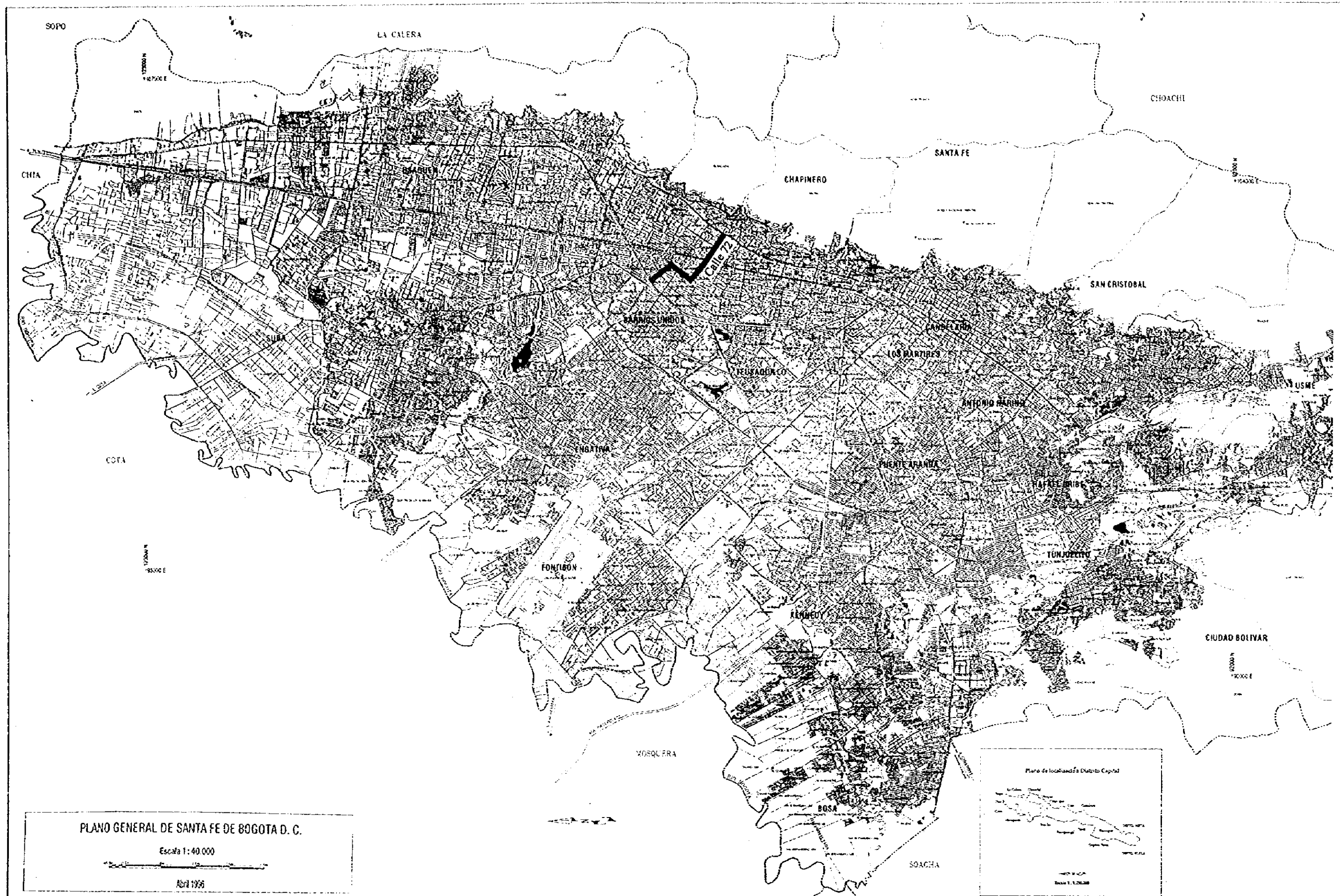
SANTA FE DE BOGOTA
THE REPUBLIC OF COLOMBIA

JAPAN INTERNATIONAL
COOPERATION AGENCY
(JICA)

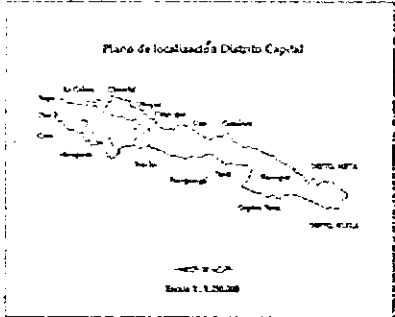
DATA
SCALE

THE FEASIBILITY STUDY ON THE PROJECT OF HIGHWAY AND BUS-LANE
OF SANTA FE DE BOGOTA IN THE REPUBLIC OF COLOMBIA

DWG No 93
PAGE No



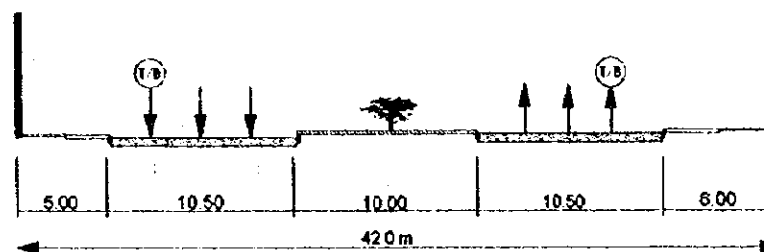
PLANO GENERAL DE SANTA FE DE BOGOTA D. C.
 Escala 1:40.000
 Abril 1956



Calle 72. Location Map	SANTA FE DE BOGOTA THE REPUBLIC OF COLOMBIA	JAPAN INTERNATIONAL COOPERATION AGENCY (JICA)	THE FEASIBILITY STUDY ON THE PROJECT OF HIGHWAY AND BUS-LANE OF SANTA FE DE BOGOTA IN THE REPUBLIC OF COLOMBIA	
			DATA SCALE	DWG No. 94 PAGE No. 12-1

TYPICAL CROSS SECTION : Calle 72

Section :



TYPICAL CROSS SECTION:
Calle 72

SANTA FE DE BOGOTA
THE REPUBLIC OF COLOMBIA

JAPAN INTERNATIONAL
COOPERATION AGENCY
(JICA)

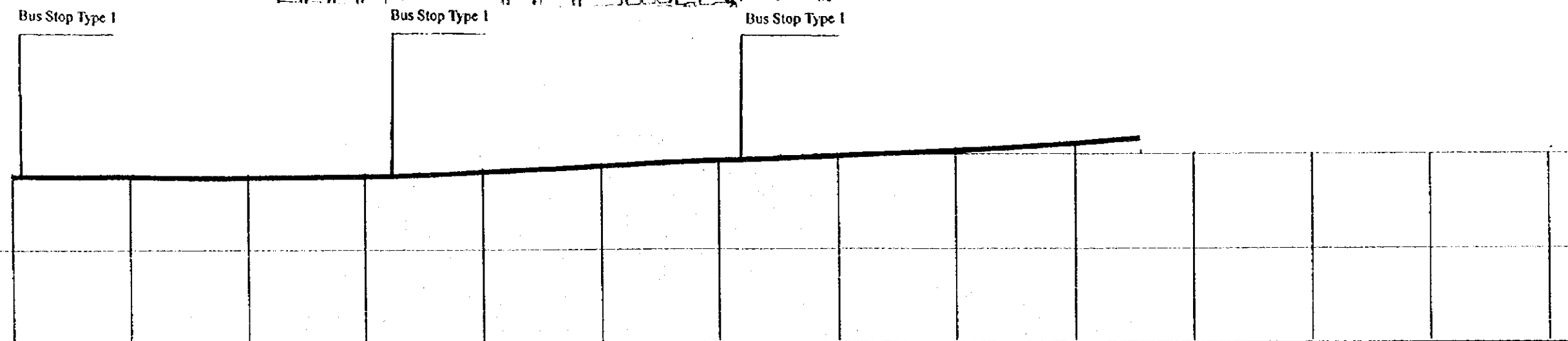
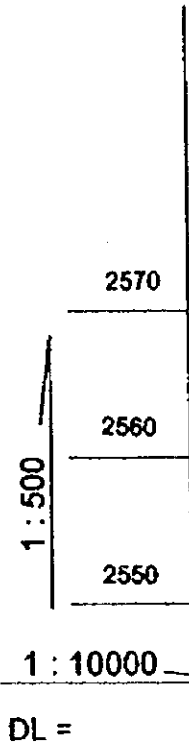
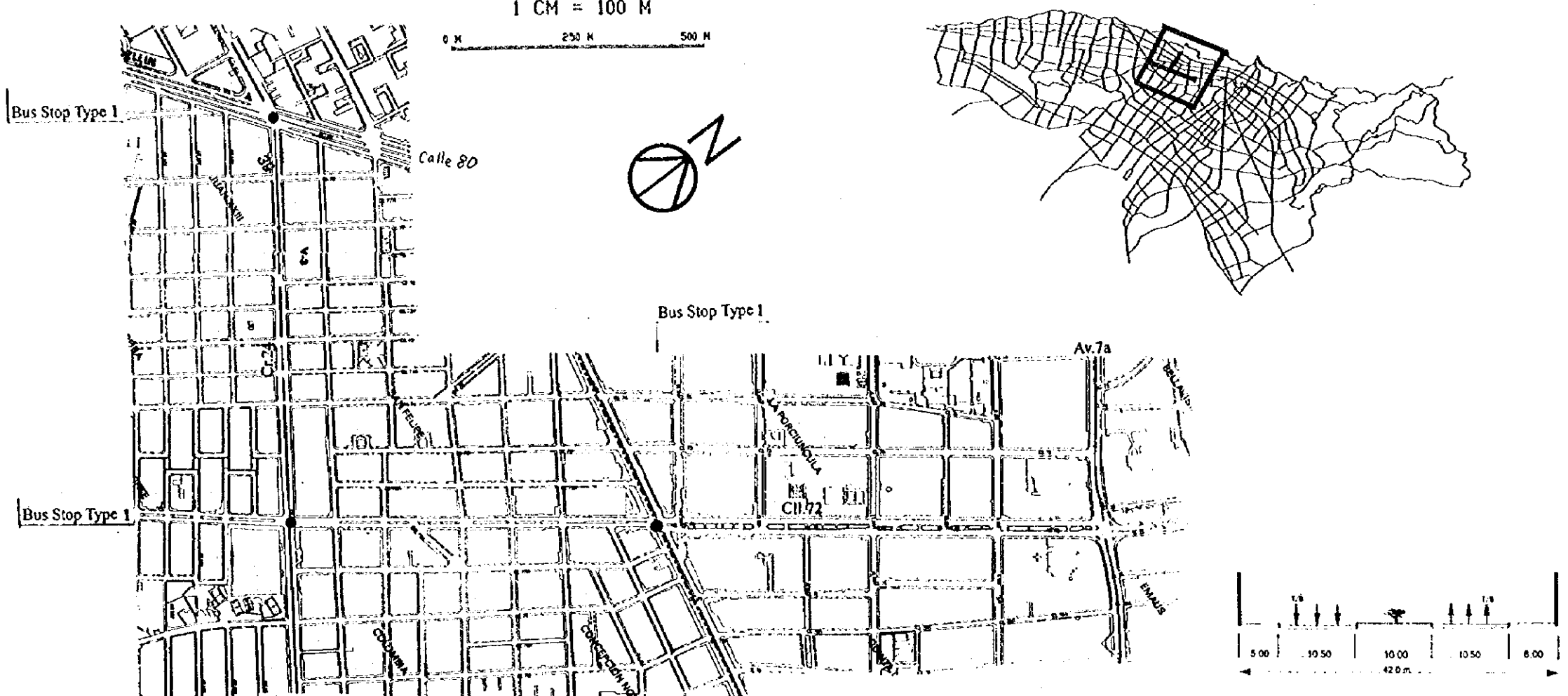
THE FEASIBILITY STUDY ON THE PROJECT OF HIGHWAY AND BUS-LANE
OF SANTA FE DE BOGOTA IN THE REPUBLIC OF COLOMBIA

DATA
SCALE 1:400

DWG No 95
PAGE No 12-2

SCALE 1:10000
1 CM = 100 M

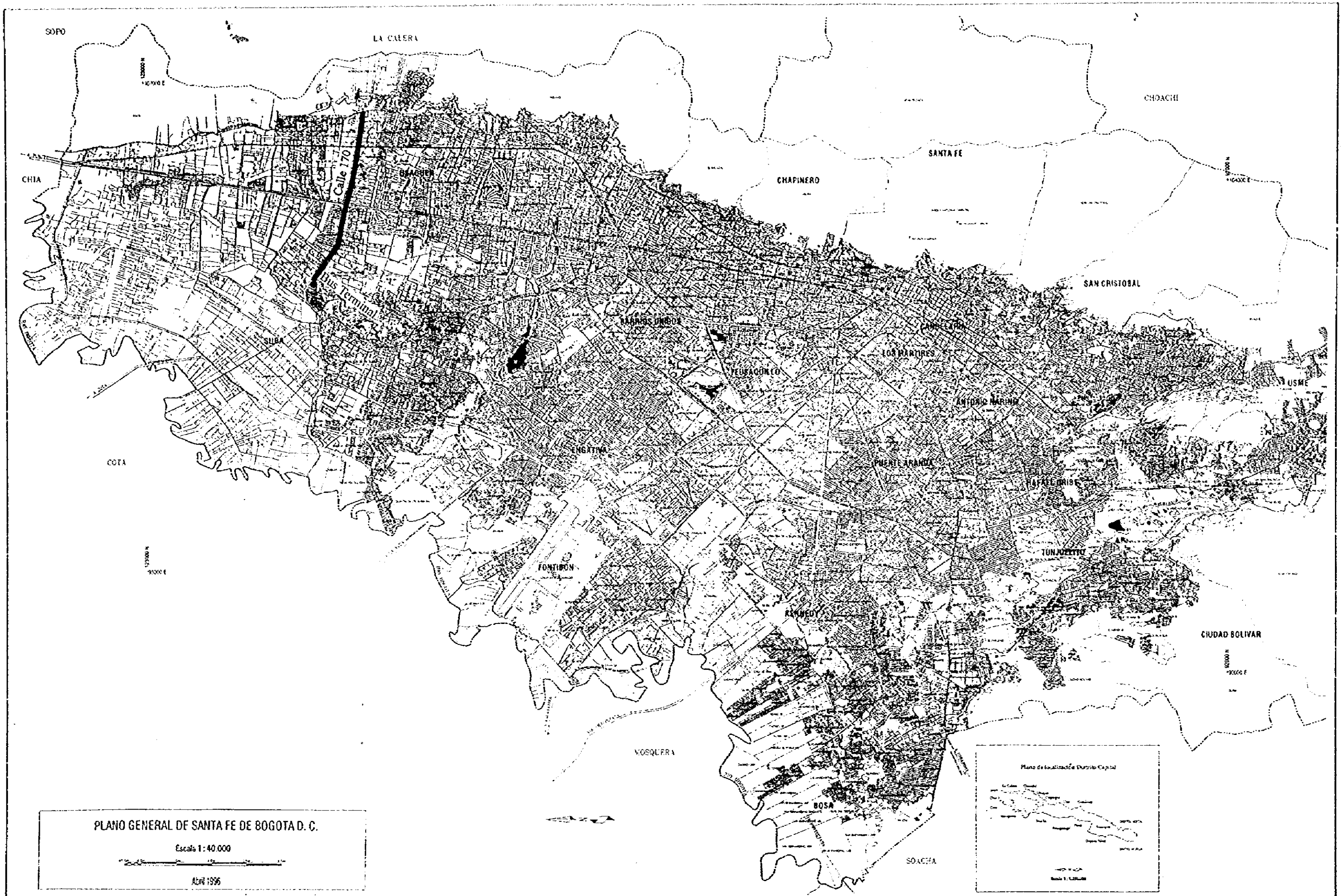
0 M 250 M 500 M



Gradient	
Proposed Height	
Ground Level	
Number	

Calle 170

	SANTA FE DE BOGOTA THE REPUBLIC OF COLOMBIA	JAPAN INTERNATIONAL COOPERATION AGENCY (JICA)	THE FEASIBILITY STUDY ON THE PROJECT OF HIGHWAY AND BUS-LANE OF SANTA FE DE BOGOTA IN THE REPUBLIC OF COLOMBIA	
			DATA SCALE	DWG No 97 PAGE No

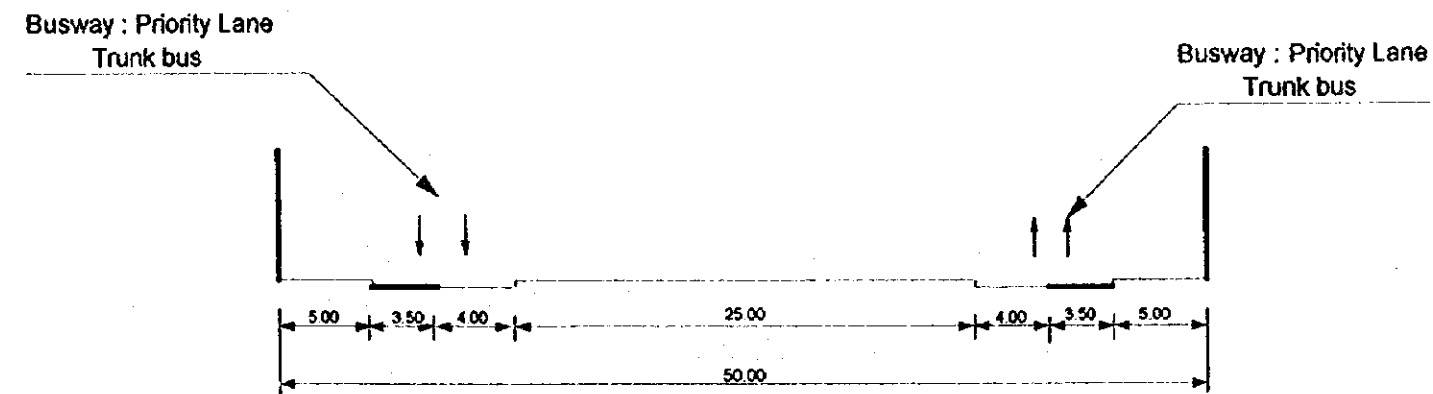


PLANO GENERAL DE SANTA FE DE BOGOTÁ D. C.
 Escala 1:40.000
 Abril 1956

Calle 170. Location Map	SANTA FE DE BOGOTÁ THE REPUBLIC OF COLOMBIA	JAPAN INTERNATIONAL COOPERATION AGENCY (JICA)	THE FEASIBILITY STUDY ON THE PROJECT OF HIGHWAY AND BUS-LANE OF SANTA FE DE BOGOTÁ IN THE REPUBLIC OF COLOMBIA	
			DATA SCALE	OWG No. 98 PAGE No. 13-1

TYPICAL CROSS SECTION : CALLE 170

Section : Av 7a - Transv 64



TYPICAL CROSS SECTION:
CALLE 170

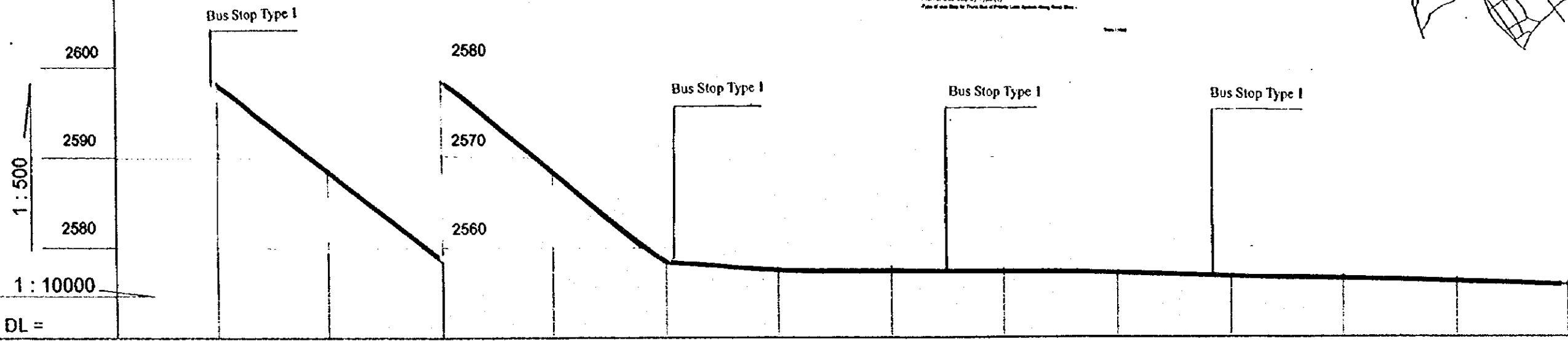
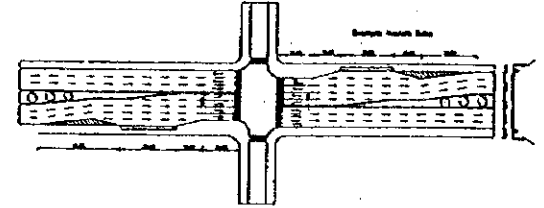
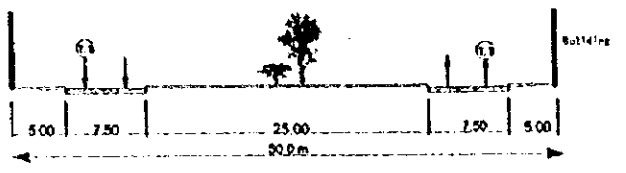
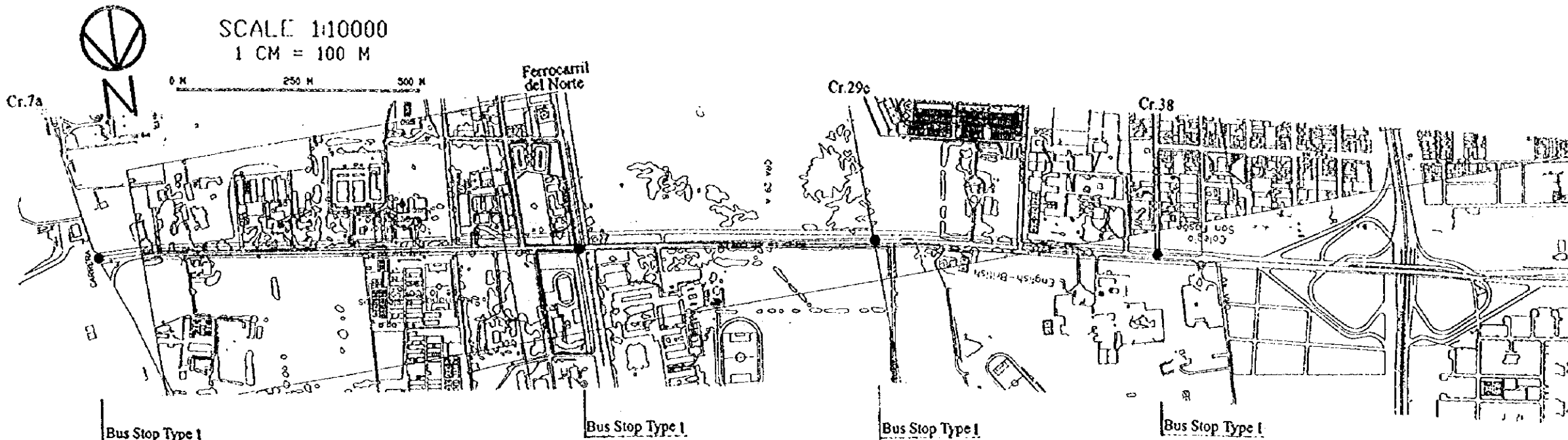
SANTA FE DE BOGOTA
THE REPUBLIC OF COLOMBIA

JAPAN INTERNATIONAL
COOPERATION AGENCY
(JICA)

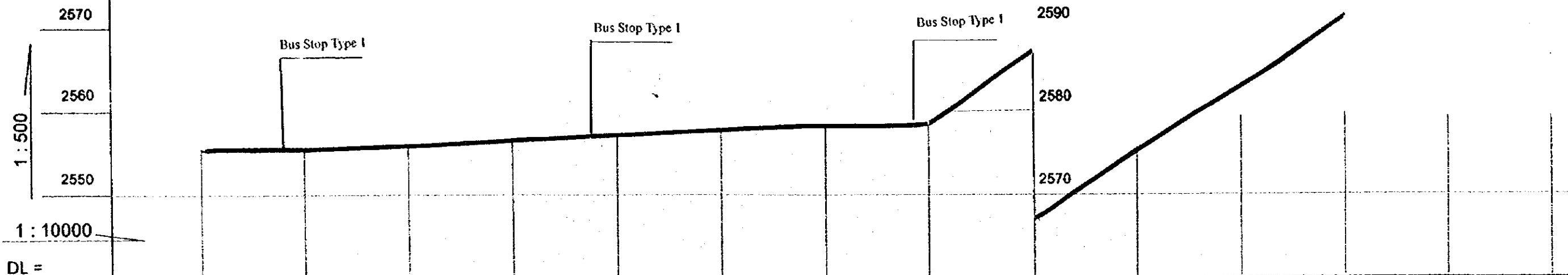
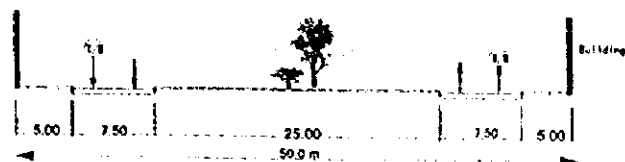
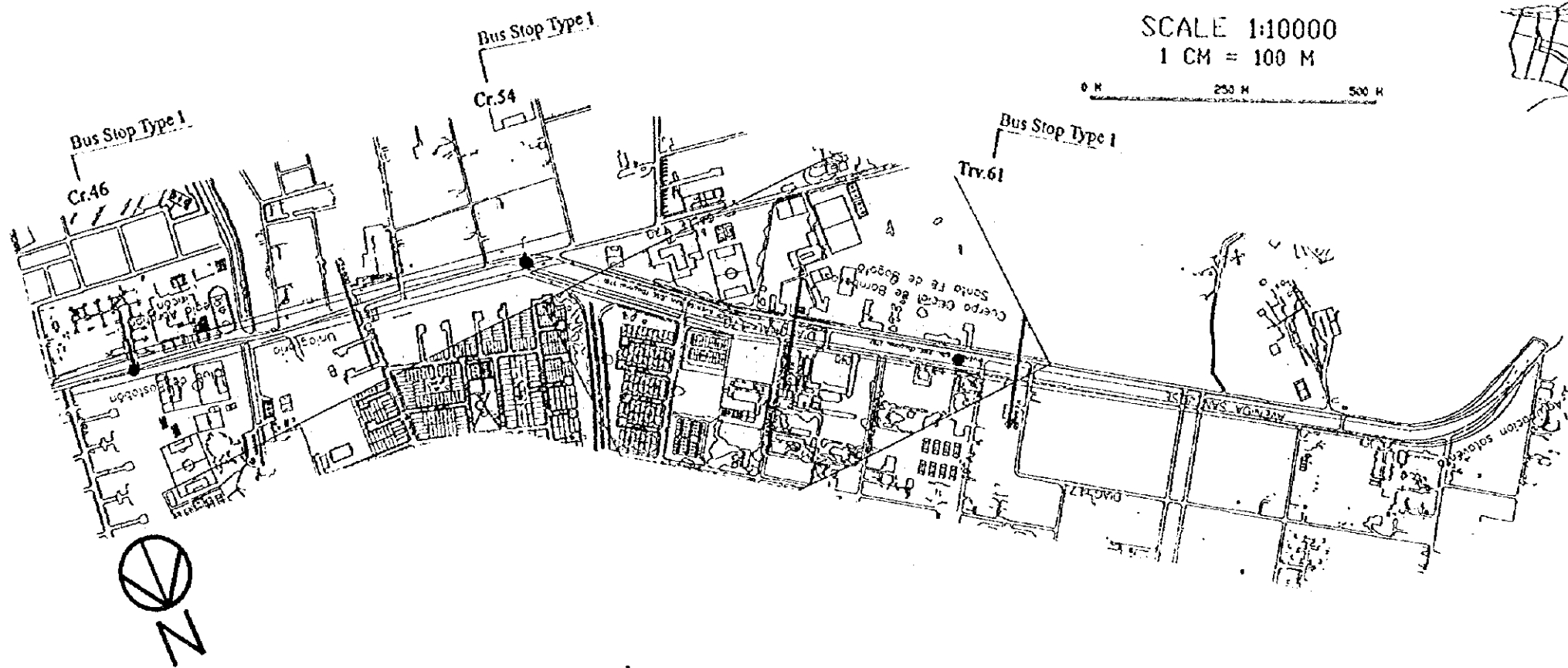
THE FEASIBILITY STUDY ON THE PROJECT OF HIGHWAY AND BUS-LANE
OF SANTA FE DE BOGOTA IN THE REPUBLIC OF COLOMBIA

DATA
SCALE 1:400

DWG No 99
PAGE No 13-2



Gradient	Same as existing ground											
Proposed Height	Same as existing ground											
Ground Level	10+000/2584.72	10+300/2584.78	10+600/2578.33	10+750/2588.43	10+800/2588.12	10+900/2587.88	10+950/2587.64	10+970/2587.40	10+990/2588.00	10+995/2588.08	10+998/2588.21	10+000/2588.75
Number												



Gradient	Same as existing ground									
Proposed Height	Same as existing ground									
Ground Level	10+000/2565.71	10+200/2565.48	10+400/2565.81	10+600/2567.21	10+800/2568.41	10+1000/2570.00	10+1200/2571.40	10+1400/2573.00	10+1600/2575.00	10+1800/2577.00
Number										

Plan and Profile
Calle 170 (2)

SANTA FE DE BOGOTA
THE REPUBLIC OF COLOMBIA

JAPAN INTERNATIONAL
COOPERATION AGENCY
(JICA)

THE FEASIBILITY STUDY ON THE PROJECT OF HIGHWAY AND BUS-LANE
OF SANTA FE DE BOGOTA IN THE REPUBLIC OF COLOMBIA

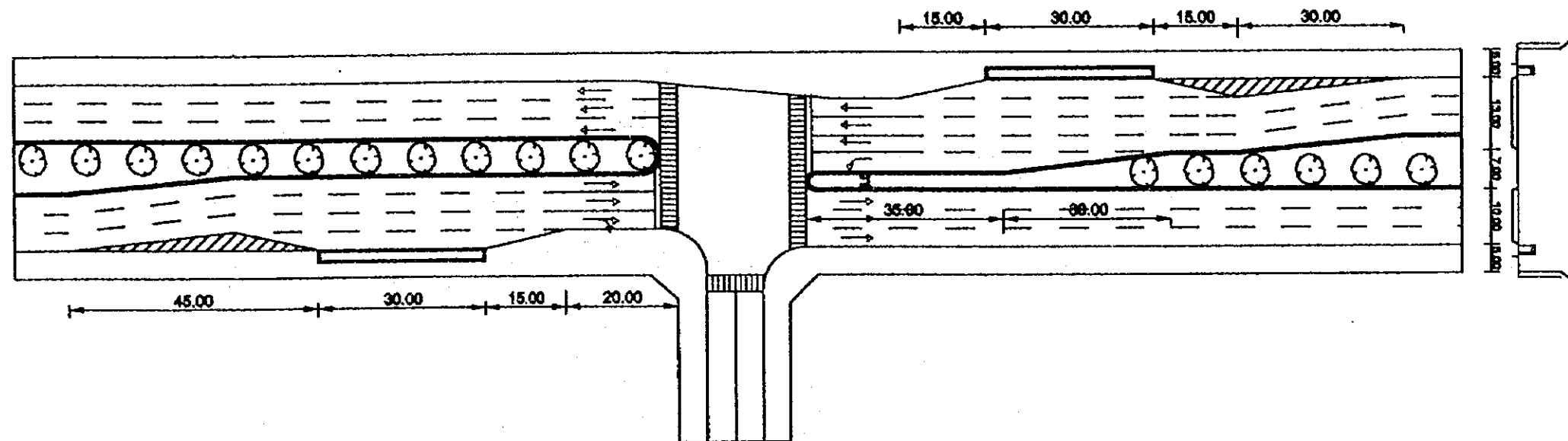
DATA
SCALE H=1:10000 V=1:500

DWG No. 101
PAGE No. 13-4

Bus Stop

	SANTA FE DE BOGOTA THE REPUBLIC OF COLOMBIA	JAPAN INTERNATIONAL COOPERATION AGENCY (JICA)	THE FEASIBILITY STUDY ON THE PROJECT OF HIGHWAY AND BUS-LANE OF SANTA FE DE BOGOTA IN THE REPUBLIC OF COLOMBIA	
			DATA	DWG No 102
			SCALE	PAGE No

Example: Carrera 7a.

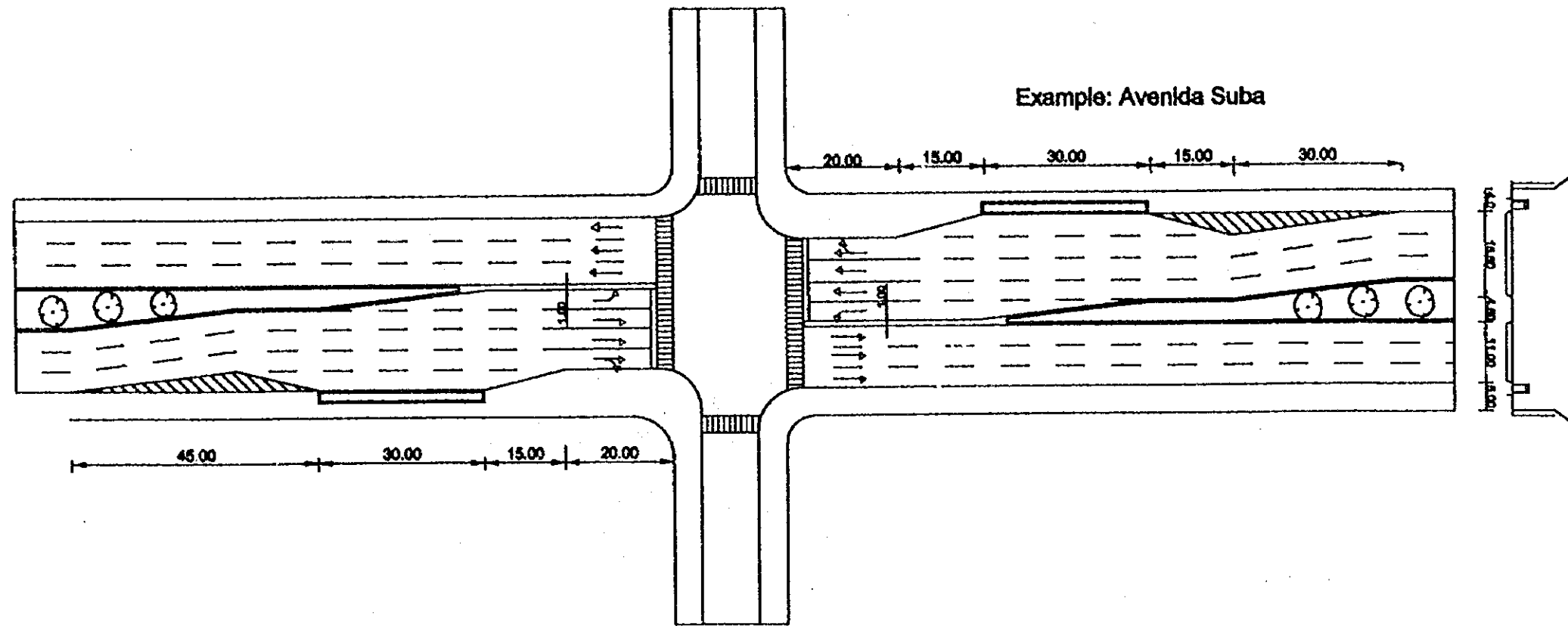


Plan of Bus Stop by Type (1)

-Type of Bus Stop for Trunk Bus of Priority Lane System Along Road Sites -

Scale 1:1000

Bus Stop (1) Type I. (Cra.7a)	SANTA FE DE BOGOTA THE REPUBLIC OF COLOMBIA	JAPAN INTERNATIONAL COOPERATION AGENCY (JICA)	THE FEASIBILITY STUDY ON THE PROJECT OF HIGHWAY AND BUS-LANE OF SANTA FE DE BOGOTA IN THE REPUBLIC OF COLOMBIA	
			DATA	DWG No 103
			SCALE	PAGE No 14-1

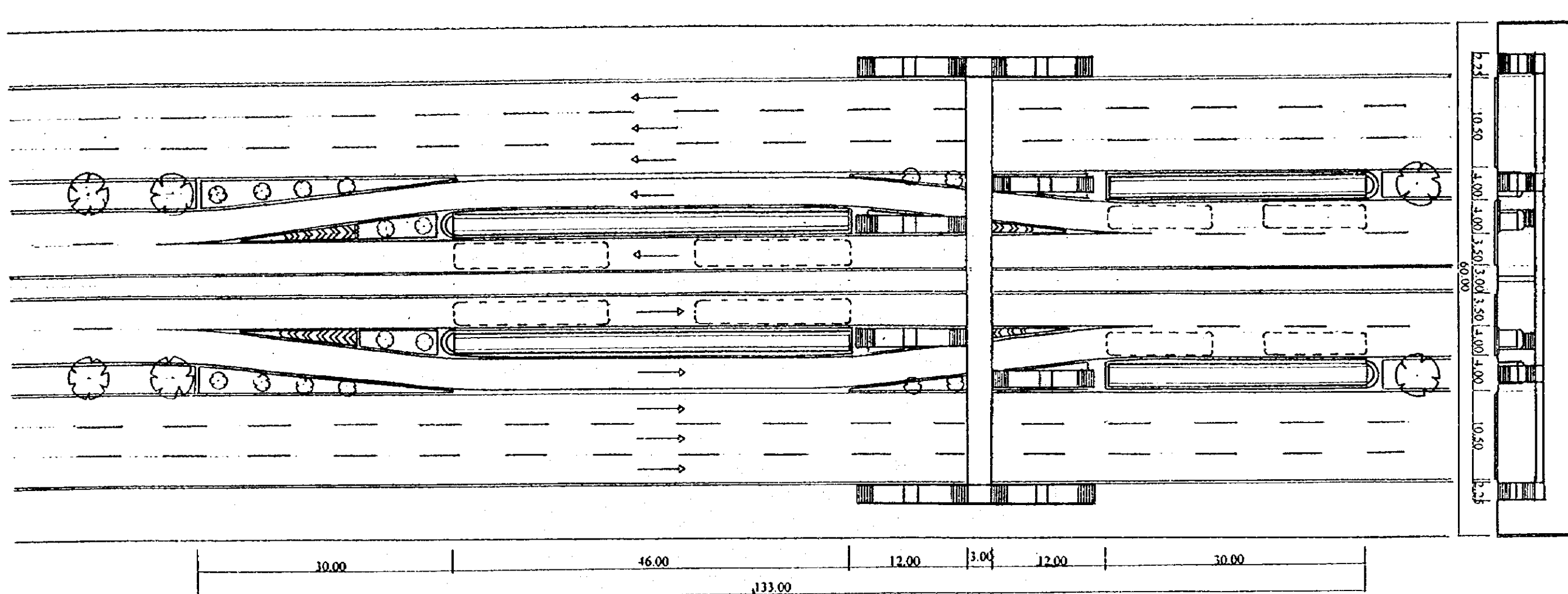


Plan of Bus Stop by Type (1)

-Type of Bus Stop for Trunk Bus of Priority Lane System Along Road Sites -

Scale 1:1000

Bus Stop (2) Type 1. (Av.Suba)	SANTA FE DE BOGOTA THE REPUBLIC OF COLOMBIA	JAPAN INTERNATIONAL COOPERATION AGENCY (JICA)	THE FEASIBILITY STUDY ON THE PROJECT OF HIGHWAY AND BUS-LANE OF SANTA FE DE BOGOTA IN THE REPUBLIC OF COLOMBIA	
			DATA SCALE	DWG No 104 PAGE No 14-2

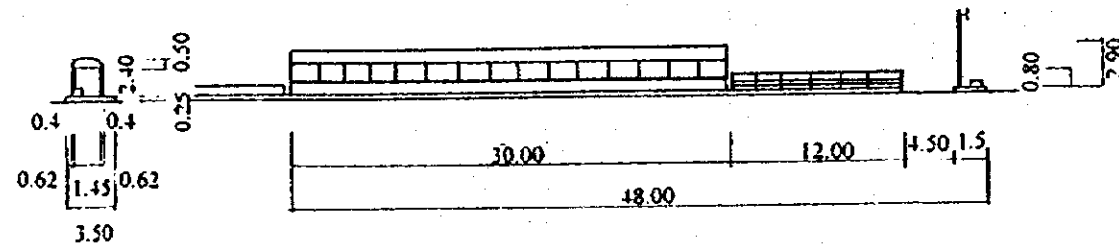
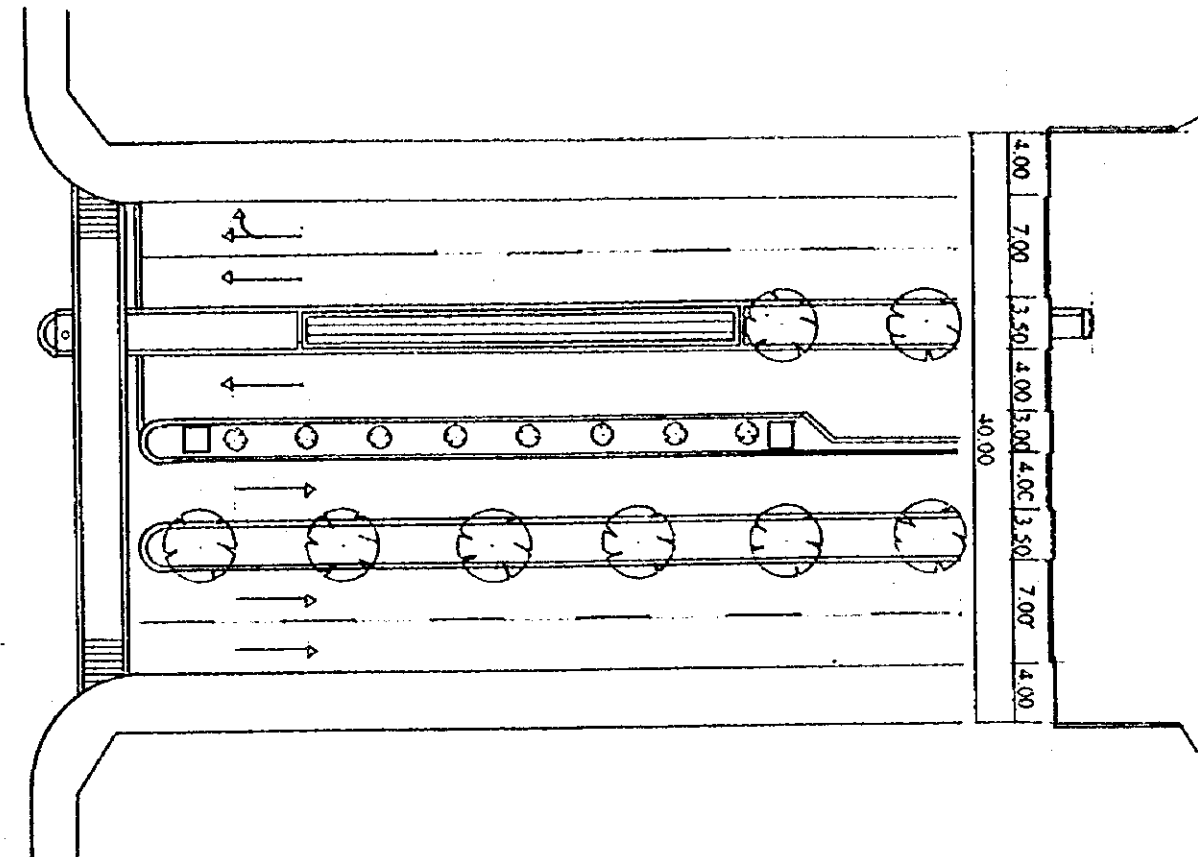
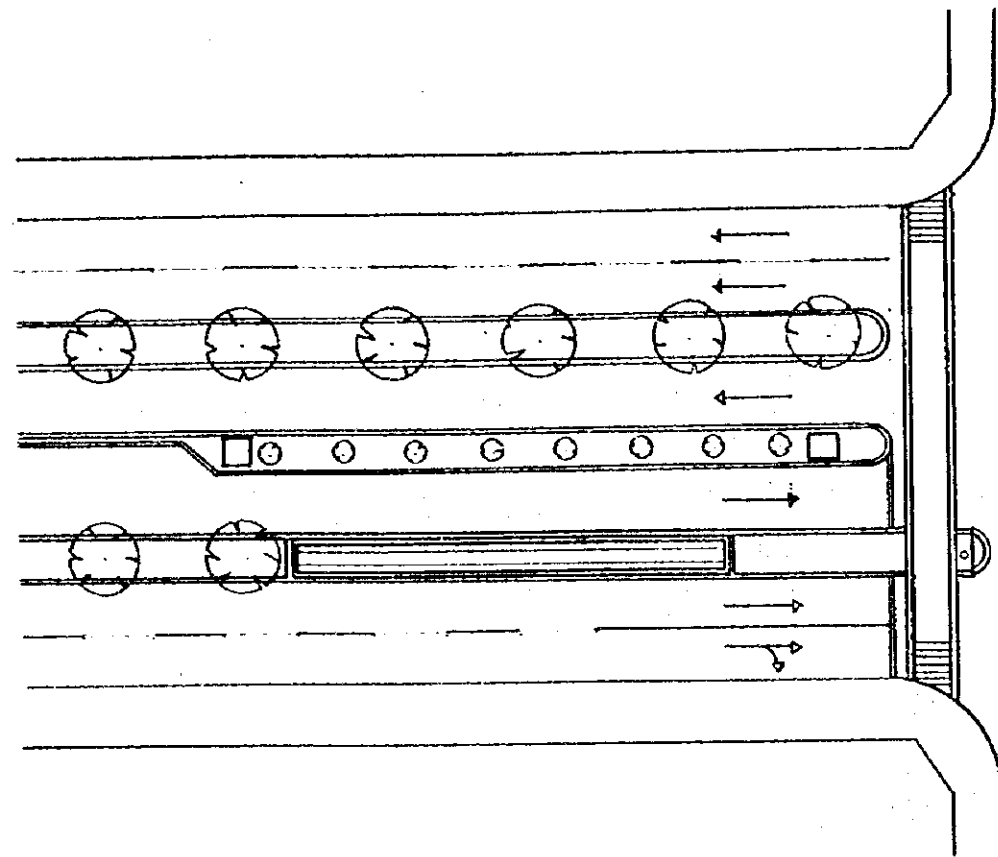


Plan of Bus Stop by Type (2)

Type of Bus Stop for trunk Bus / Express Bus on Center of Road

Example: Autop.Sur / Norte

BusStop (3) Type 2	SANTA FE DE BOGOTA THE REPUBLIC OF COLOMBIA	JAPAN INTERNATIONAL COOPERATION AGENCY (JICA)	THE FEASIBILITY STUDY ON THE PROJECT OF HIGHWAY AND BUS-LANE OF SANTA FE DE BOGOTA IN THE REPUBLIC OF COLOMBIA	
			DATA SCALE	DWG No 105 PAGE No 14-3

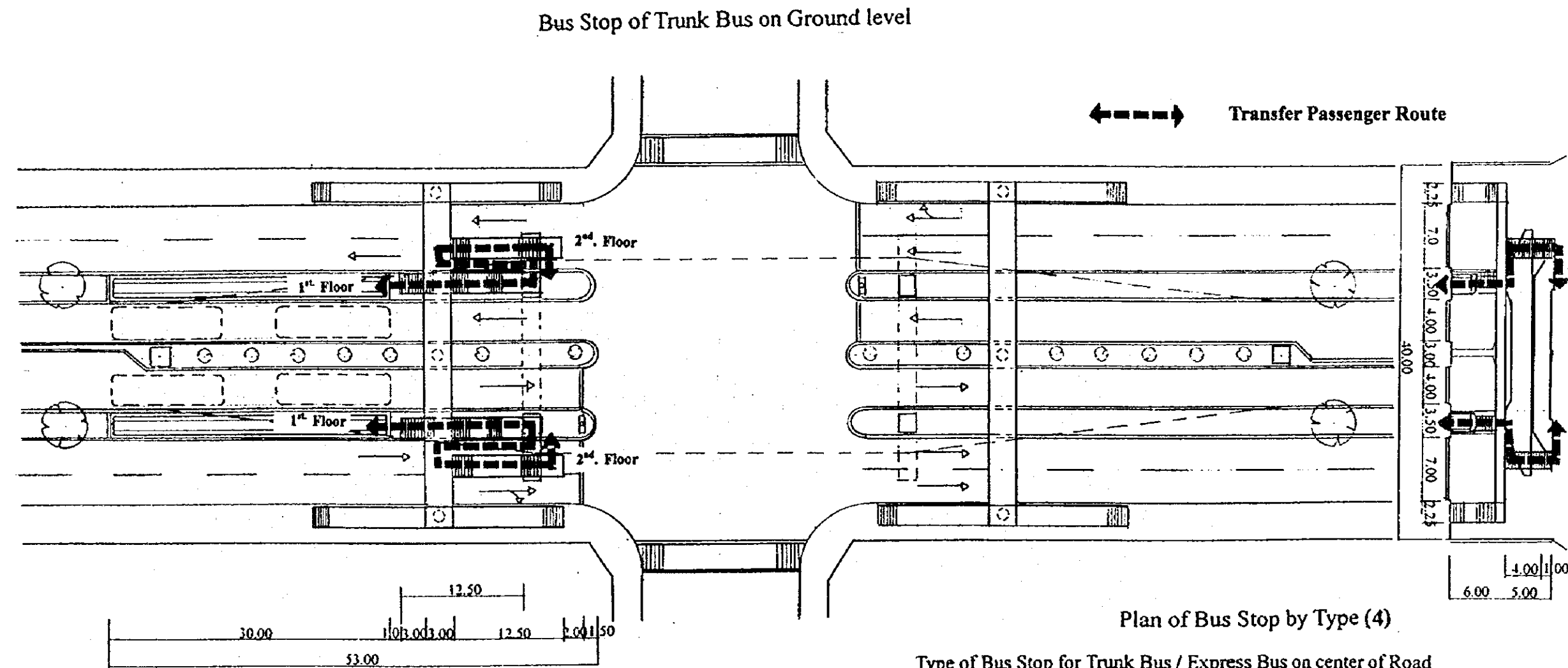
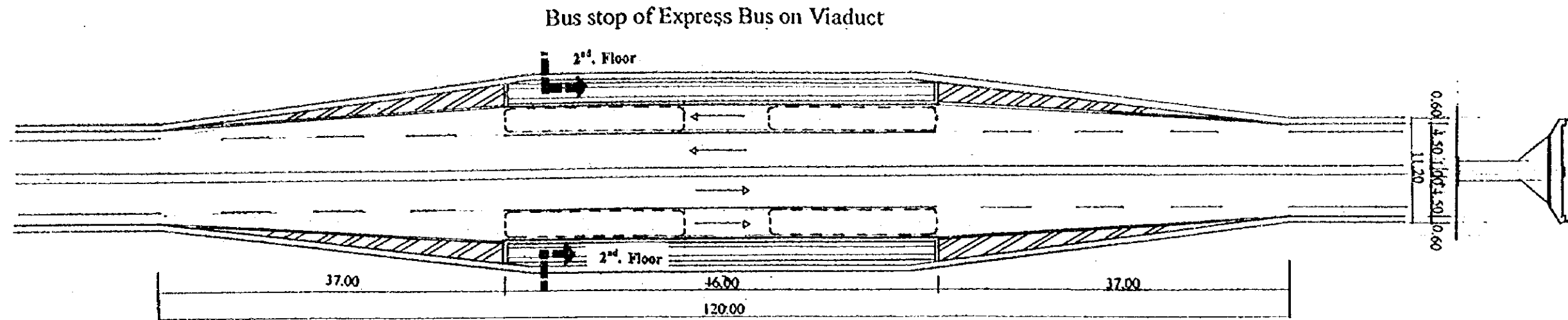


Plan of Bus Stop by Type (3)

Type of Bus Stop for Trunk Bus on Center of Road at Signalized Intersection

Example: Av.Caracas

Bus Stop (4) Type 3	SANTA FE DE BOGOTA THE REPUBLIC OF COLOMBIA	JAPAN INTERNATIONAL COOPERATION AGENCY (JICA)	THE FEASIBILITY STUDY ON THE PROJECT OF HIGHWAY AND BUS-LANE OF SANTA FE DE BOGOTA IN THE REPUBLIC OF COLOMBIA	
			DATA SCALE	DWG No 106 PAGE No 14-4

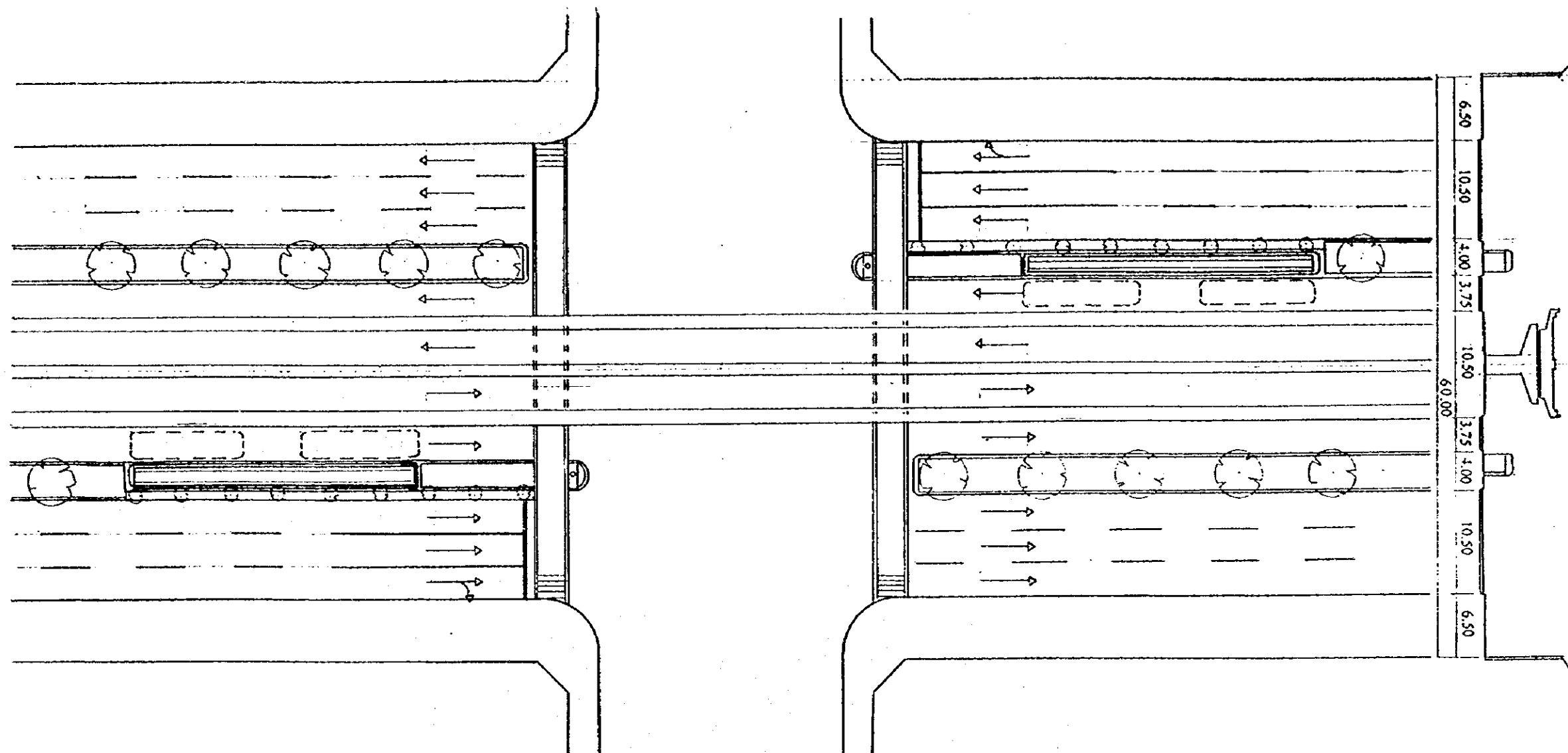


Plan of Bus Stop by Type (4)

Type of Bus Stop for Trunk Bus / Express Bus on center of Road

Example: Av.Caracas

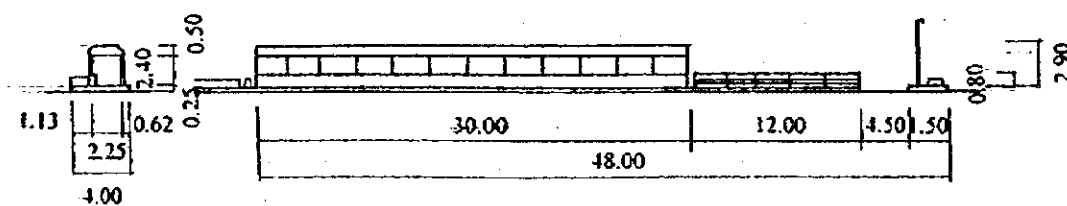
Bus Stop (5) Type 4	SANTA FE DE BOGOTA THE REPUBLIC OF COLOMBIA	JAPAN INTERNATIONAL COOPERATION AGENCY (JICA)	THE FEASIBILITY STUDY ON THE PROJECT OF HIGHWAY AND BUS-LANE OF SANTA FE DE BOGOTA IN THE REPUBLIC OF COLOMBIA	
			DATA	DWG No 107
			SCALE	PAGE No 14-5



Plan of Bus Stop by Type (5)

Type of Bus Stop for Trunk Bus on Center of Road at Signalized Intersection

Example: Autop.Sur



Bus Stop (6)
Type 5

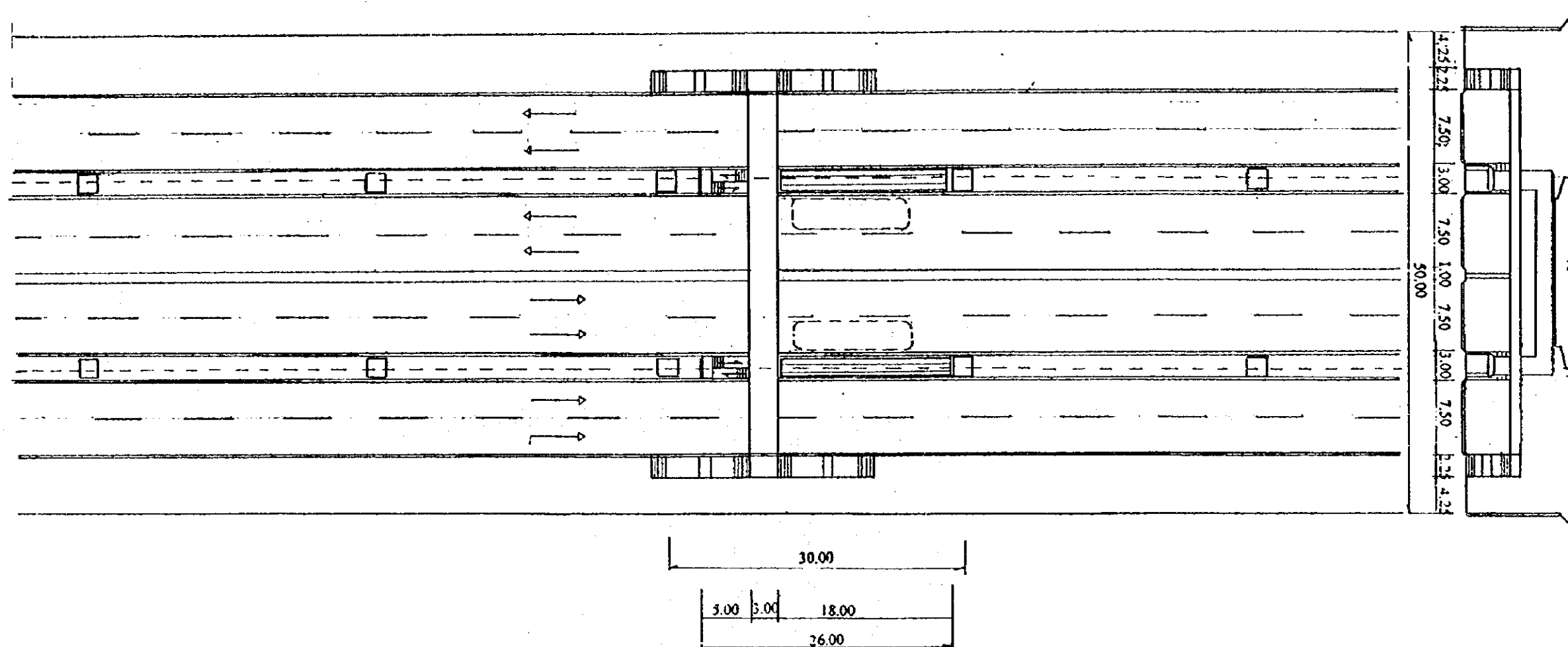
SANTA FE DE BOGOTA
THE REPUBLIC OF COLOMBIA

JAPAN INTERNATIONAL
COOPERATION AGENCY
(JICA)

THE FEASIBILITY STUDY ON THE PROJECT OF HIGHWAY AND BUS-LANE
OF SANTA FE DE BOGOTA IN THE REPUBLIC OF COLOMBIA

DATA
SCALE

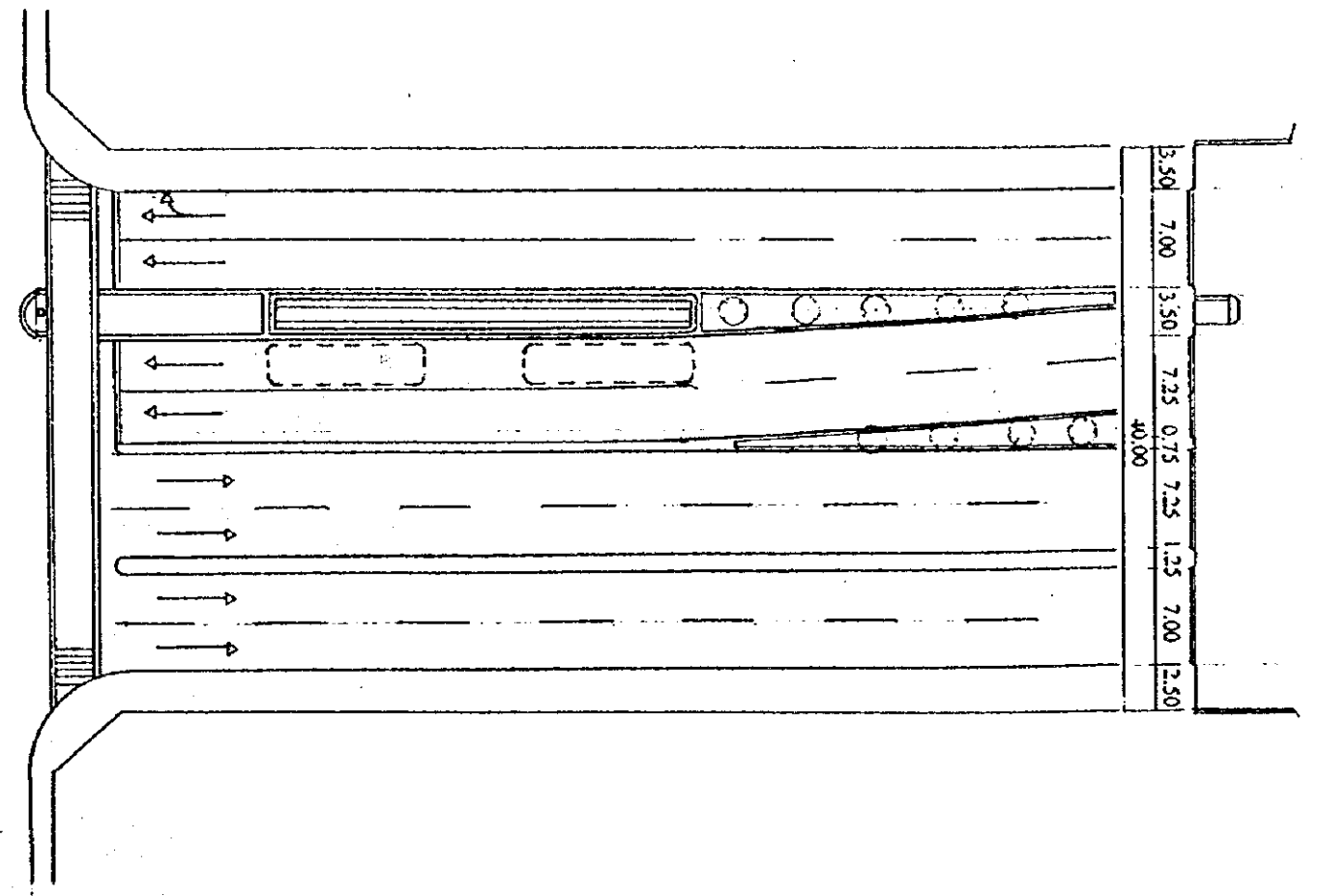
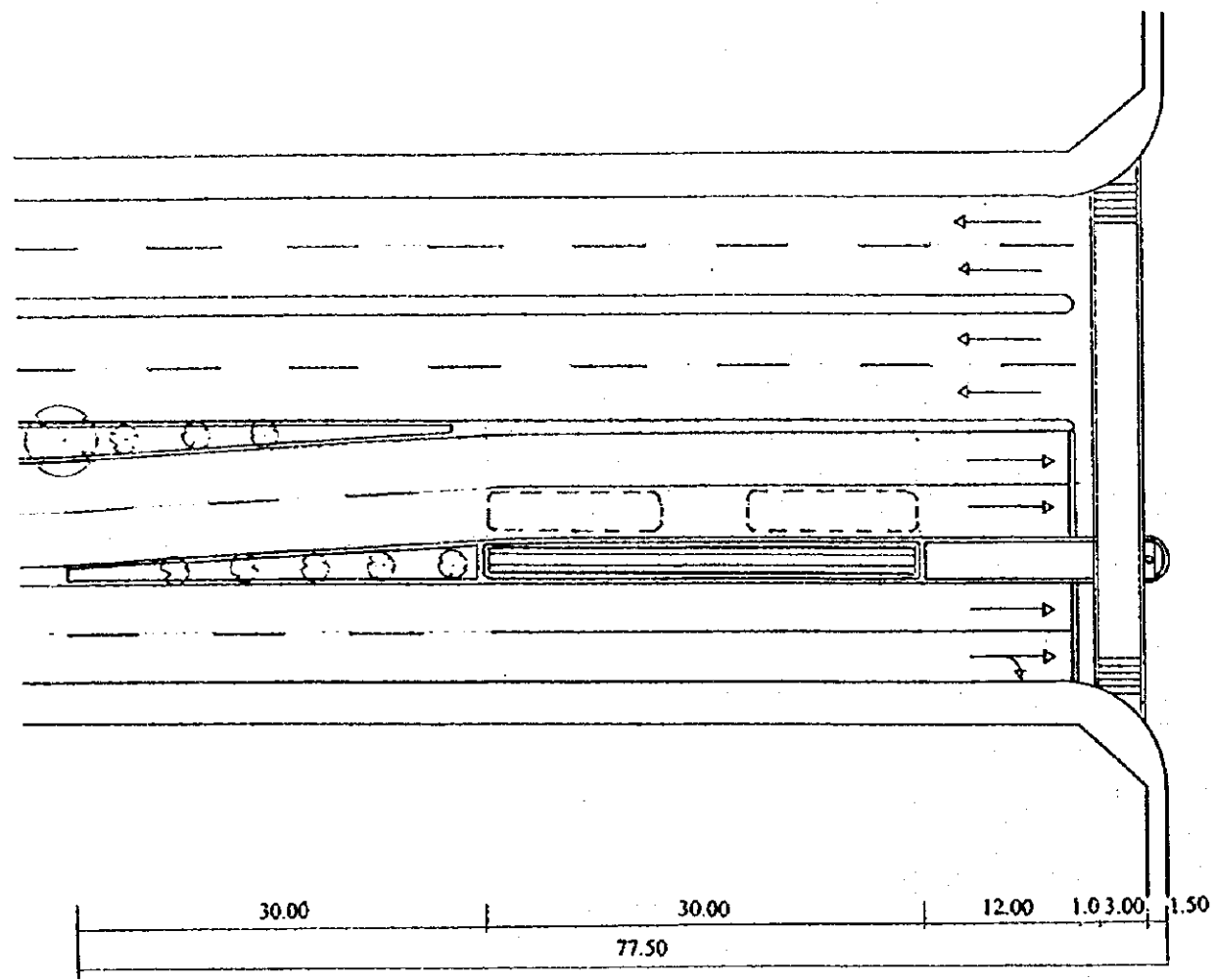
DWG No 108
PAGE No 14-6



Plan of Bus Stop by Type (6)

Type of Bus Stop for Trunk Bus on Center of Road
 Example : Av Quito

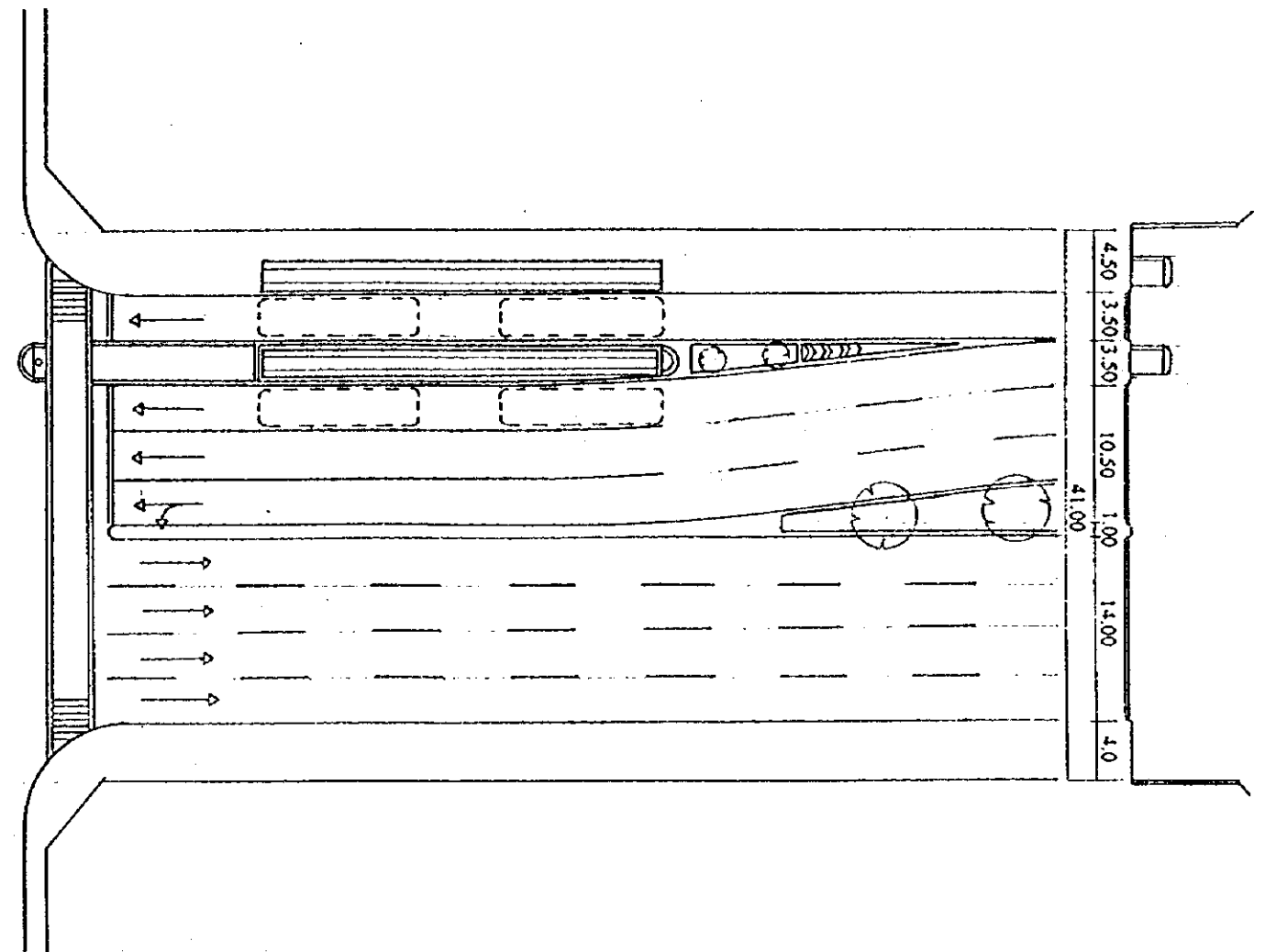
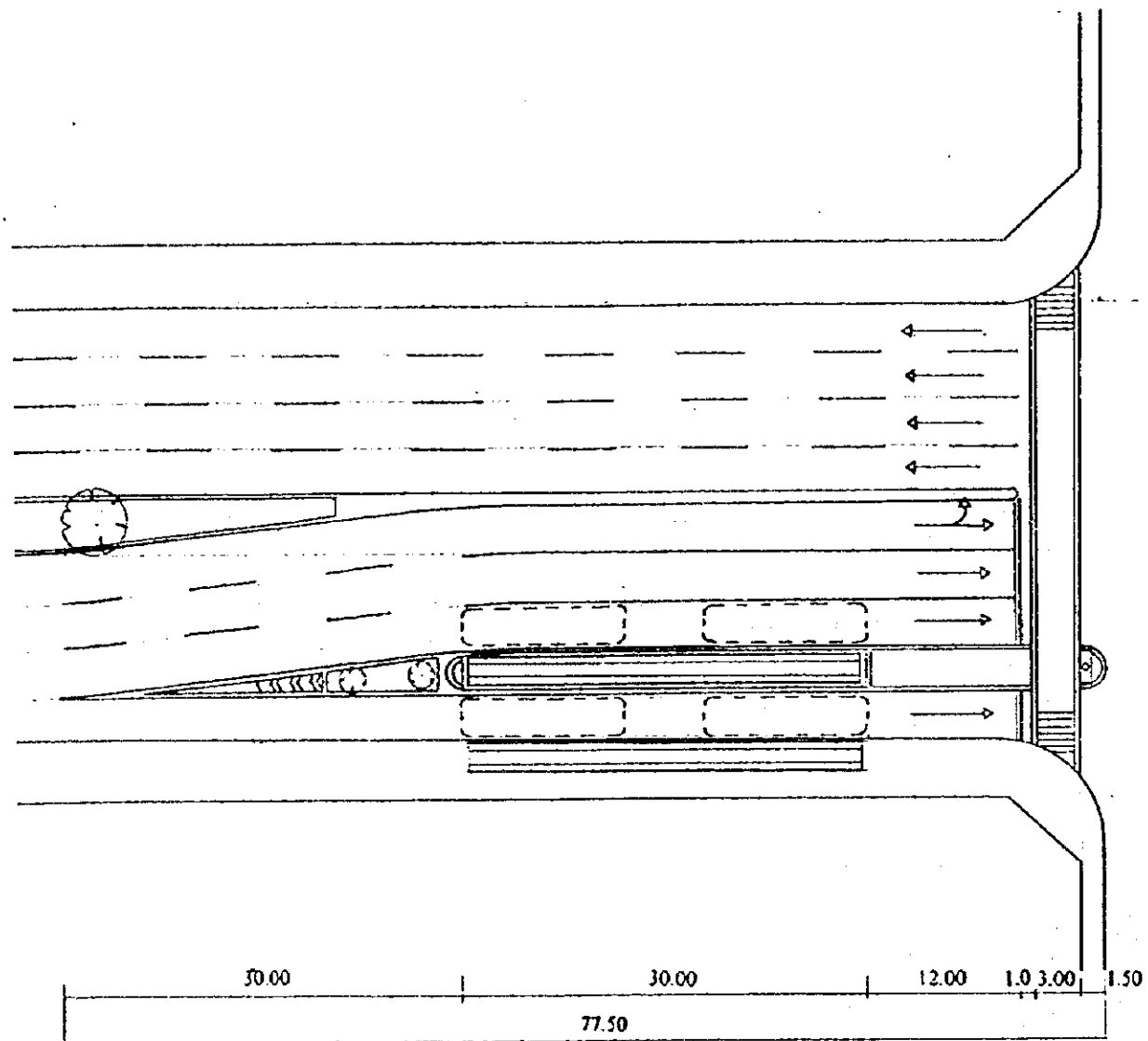
Bus Stop (7) Type 6	SANTA FE DE BOGOTA THE REPUBLIC OF COLOMBIA	JAPAN INTERNATIONAL COOPERATION AGENCY (JICA)	THE FEASIBILITY STUDY ON THE PROJECT OF HIGHWAY AND BUS-LANE OF SANTA FE DE BOGOTA IN THE REPUBLIC OF COLOMBIA	
			DATA SCALE	DWG No 109 PAGE No 14-7



Plan of Bus Stop by Type (7)

Type of Bus Stop for Trunk Bus of Priority Lane System
 Example: Av.68

Bus Stop (8) Type 7	SANTA FE DE BOGOTA THE REPUBLIC OF COLOMBIA	JAPAN INTERNATIONAL COOPERATION AGENCY (JICA)	THE FEASIBILITY STUDY ON THE PROJECT OF HIGHWAY AND BUS-LANE OF SANTA FE DE BOGOTA IN THE REPUBLIC OF COLOMBIA	
			DATA SCALE	DWG No 110 PAGE No 14-8



Plan of Bus Stop by Type (8)

Type of Bus Stop for Trunk Bus of Two Priority Lanes System

Example: Carrera 10a

Bus Stop (9) Type 8	SANTA FE DE BOGOTA THE REPUBLIC OF COLOMBIA	JAPAN INTERNATIONAL COOPERATION AGENCY (JICA)	THE FEASIBILITY STUDY ON THE PROJECT OF HIGHWAY AND BUS-LANE OF SANTA FE DE BOGOTA IN THE REPUBLIC OF COLOMBIA	
			DATA SCALE	DWG No 111 PAGE No 14-9