

15 終了時合同評価調査時に用いた質問表と分野別回答

資料-15

No.	質問	回答 (計画設計基準)	回答 (水管理)
1	What are the recommendable crop(s) as secondary crop to meet with the Super Goal? (PLS show with estimated demand, market prices, optimum cropping calendar by province.)	無し	無し
2	PLS explain prioritized concrete measure(s) to extend secondary crop development scheme into farmers.	無し	無し
3	Have you ever noticed any schemes or projects related with this Project? (Name, Term, Donor or Department, Finance, etc.)	無し	無し
4	PLS explain TOR or show Project Digest of IOSP and IOSP-II by World Bank	無し	無し
5	PLS give comparative explanations between this Project and the World Bank project.	無し	無し
6	PLS provide a copy of DCP's areas and organization charts	無し	無し
7	PLS provide statistical information as specified as : 1) Number of farm house, 2) Number of farmers, 3) rice cropped area, 4) Average annual income per household, 5) Average production of rice per household per year, 6) Average rice gate price.	無し	無し
8	PLS provide statistical information as specified as 1) Average annual income of middle class people living in urban (per province).	無し	無し
	PLS explain farmers' present conditions, which cannot grasp with statistics		
9	+ What are the main income sources of farmers, out of agriculture?	無し	無し
10	+ Averagely how much are they receiving per year or per month?	無し	無し
11	PLS explain how farmers are understanding on crop diversification.	水踏下流域農民や高標高農地を持つ農民が既に作物多様化を実践している。しかし、彼らの大半は栽期に1or2種の作物栽培のみが多い。高価値作物導入には展示農場での実際の経験が要。	無し
12	PLS give your comments whether farmers prefer farming at other job opportunities for expanding income.	無し	無し
13	PLS comment whether the Project is effective or not, frankly, with reason(s)	本件の効果は大と判断。特に水不足域水田での灌漑方式は役立つ。	無し
14	PLS comment whether the Project implementation schedule is effective or not, with reason(s)	本件実施計画は期待通りとは言えないが、本部、地方事務所との連携で作物多様化を目指す事については何とか達成可能であろう。	無し
15	PLS comment what aspects are progress(ed) with this Project. (By each assignment)	作物多様化導入に関する運営計画のための水文特性の高精度化	無し
	PLS give your comments on training conducted through this project :		
16	+ Regarding its frequency	本事業による技術開発の研修実施は常に絶対必要なもの。年1回の研修は妥当。	年1回研修('94~'96) 回数は妥当; その準備、結果整理、教材、関係者手配、宿舎確保など
17	+ Regarding its scale of trainee	研修生の技術に関し、彼らの能力、背景は妥当なもの。	NIA各部署の中堅技術者を対象に研修実施。OM技術研修に優先度を与えたのは忘れた技術の再理解とDCEP目的の啓蒙に最適。
18	+ Regarding its content taken in the training courses	研修内容は事業目的に沿ったものであった。	毎年研修課題は各部門の行った調査内容に則り変更。
19	+ Regarding requests if any	研修機材の不足が挙げられる。一方NIAとしても研修費用の不足があり、JICAの支援が望まれる。	研修性が講師として地方で研修を行う際研修機材の利用を希望。期限限定での研修機材の貸出しが求められる。
20	+ Regarding aspects required to be revised	無し	無し
21	+ Regarding its effectiveness which you feel	自分達のみでイバ外調査が出来れば更に効果的	研修参加者が示した意欲と反応からして研修は非常に効果があったと理解できる。
22	What are major reasons of recent leaves of counterparts from the Project?	無し	主理由はDCEPで獲得した技術能力を更に高め、可能ならばより高位の職位を目指すため。
23	PLS explain how to maintain technology after taking out counterparts from sections	無し	無し
24	PLS explain how to keep up-dating manuals after the project termination, by each assignment title adopting now.	無し	無し

024 1 vs 024 1

No.	質 問	回 答 (計画設計基準)	回 答 (水 管 理)
25	PLS give comments on cost efficiency for the Project, frankly.	無し	無し
26	PLS show records of annual detailed disbursement of the Project ('93 to present)	無し	無し
27	PLS give copy(s) of Govt. national development policy (5 year plan or equivalent)	無し	無し
28	PLS give copy(s) of Agri-sector development policy (5 year plan or equivalent)	無し	無し
29	PLS give copy(s) of Agri-sector action plan with budget (recent 5-year)	無し	無し
30	PLS give information what the Govt. thinks crop diversification policy in recent.	無し	無し
31	PLS give information of the Govt's concrete plan(s) to extend crop diversification policy.	無し	無し
32	PLS give evidence(s) of market demand for secondary crops	無し	無し
33	PLS give record of market prices of secondary crops (For recent 3 years, per crop, per month)	無し	無し
34	PLS give information or evidence(s) how deep farmers have wills for secondary crops.	無し	無し
35	PLS show new project purpose(s) as next phase from next year, regarding crop diversifications ( Purpose, Activity plan, Personnel affairs )	無し	無し
36	PLS show personnel affair plan from next year, considering continuation of the Project, at NIA level	無し	無し
37	PLS show budget plan from next year, considering continuation of the Project at NIA level	無し	無し
38	PLS show action plan from next year, considering continuation of the Project at NIA level	無し	無し
39	PLS show personnel affair plan from next year, considering continuation of the Project, at NIA level	無し	無し
40	PLS show how to manage the subject of upgrading NIA engineers by yourself from next year.	無し	無し
41	PLS give comments on accomplishment of the Project Outputs. ( Overall and with your specified aspects / examples, numerical expression / information as possible )	TSIと部門が作成した業務成果と残業務を参照	無し
42	PLS give comments on efficiency of accomplishment of the Project Outputs, comparing Inputs. ( Overall and with your specified aspects / example, numerical expression / information as possible )	TSIと部門が作成した業務成果と残業務を参照	無し
43	PLS give comments on quality and quantity of adopted Input through Phase II, with your idea ( Overall and with your specified aspects / examples, numerical expression / information as possible )	無し	無し
44	PLS give comments on Project outputs, whether they are as scheduled or not ( With your reason(s)/examples, numerical expression / information as possible )	無し	無し
45	PLS give comments on adapted project implementation schedule, whether appropriate or not. ( With your reasons, alternatives if not appropriate for the Phase II. )	無し	無し
46	PLS give comments on the difference between Outputs and the original plan if any, whether acceptable or not. ( With your reasons, alternatives if not appropriate for the Phase II. )	無し	元米ModeINISで水管理を行う予定であったがElNino現象で実施不可能となった。故に、水配分のみを行うこととした。
47	PLS show positive project impact(s) on NIA level (With your reasons / Examples, numerical expression / information as possible)	無し	無し
48	PLS show positive project impact(s) on MIS level (With your reasons / Examples, numerical expression / information as possible)	MIS展示圃場の外は設置直後であり、現段階で普及出来ない。地表水手動灌漑実施地区との容易な比較が出来るよう十分なデータ収集が肝要である。	無し
49	PLS show positive project impact(s) on farmers' level (With your reasons / Examples, numerical expression / information as possible)	無し	無し

No.	質 問	回 答 (計画設計基準)	回 答 (水 管 理)
50	PLS show positive project impact(s) on Government level (With your reasons / Examples, numerical expression / information as possible.)	無し	無し
51	PLS show positive project impact(s) for natural environment (With your reasons / Examples, numerical expression / information as possible.)	無し	無し
52	PLS show positive project impact(s) for agricultural sector (With your reasons / Examples, numerical expression / information as possible.)	無し	無し
53	PLS give comments on contributed factors to expand project impact(s) on NIA level. ( With your reasons / Examples, numerical expression / information as possible, methods + measures + concerned authority(s) + cost.)	無し	無し
54	PLS give comments on contributed factors to expand project impact(s) on MIS level. ( With your reasons / Examples, numerical expression / information as possible, methods + measures + concerned authority(s) + cost.)	無し	無し
55	PLS give comments on contributed factors to expand project impact(s) on farmers' level. ( With your reasons / Examples, numerical expression / information as possible, methods + measures + concerned authority(s) + cost.)	無し	無し
56	PLS give comments on contributed factors to expand project impact(s) on Government level. ( With your reasons / Examples, numerical expression / information as possible, methods + measures + concerned authority(s) + cost.)	無し	無し
57	PLS give comments on contributed factors to expand project impact(s) on natural environment. ( With your reasons / Examples, numerical expression / information as possible, methods + measures + concerned authority(s) + cost.)	無し	無し
58	PLS give comments on contributed factors to expand project impact(s) on Agri-sector. ( With your reasons / Examples, numerical expression / information as possible, methods + measures + concerned authority(s) + cost.)	無し	無し
59	PLS give comments on inhibited factors to expand project impact(s) on NIA level. ( With your reasons / Examples, numerical expression / information as possible, methods + measures + concerned authority(s) + cost.)	無し	無し
60	PLS give comments on inhibited factors to expand project impact(s) on MIS level. ( With your reasons / Examples, numerical expression / information as possible, methods + measures + concerned authority(s) + cost.)	無し	無し
61	PLS give comments on inhibited factors to expand project impact(s) on farmers' level. ( With your reasons / Examples, numerical expression / information as possible, methods + measures + concerned authority(s) + cost.)	無し	無し
62	PLS give comments on inhibited factors to expand project impact(s) on Government level. ( With your reasons / Examples, numerical expression / information as possible, methods + measures + concerned authority(s) + cost.)	無し	無し
63	PLS give comments on inhibited factors to expand project impact(s) on natural environment. ( With your reasons / Examples, numerical expression / information as possible, methods + measures + concerned authority(s) + cost.)	無し	無し
64	PLS give comments on inhibited factors to expand project impact(s) on Agri-sector. ( With your reasons / Examples, numerical expression / information as possible, methods + measures + concerned authority(s) + cost.)	無し	無し

No.	質 問	回 答 (計画設計基準)	回 答 (水 管 理)
65	PLS show <b>positive project impact(s)</b> on NIA level (With your reasons / Examples, numerical expression / information as possible)	無し	無し
66	PLS show <b>positive project impact(s)</b> on MIS level (With your reasons / Examples, numerical expression / information as possible)	無し	無し
67	PLS show <b>positive project impact(s)</b> on farmers' level (With your reasons / Examples, numerical expression / information as possible)	無し	無し
68	PLS show <b>positive project impact(s)</b> on Government level (With your reasons / Examples, numerical expression / information as possible)	無し	無し
69	PLS show <b>positive project impact(s)</b> for natural environment (With your reasons / Examples, numerical expression / information as possible)	無し	無し
70	PLS show <b>positive project impact(s)</b> for agricultural sector (With your reasons / Examples, numerical expression / information as possible)	無し	無し
71	PLS show <b>negative project impact(s)</b> on NIA level (With your reasons / Examples, numerical expression / information as possible)	無し	無し
72	PLS show <b>negative project impact(s)</b> on MIS level (With your reasons / Examples, numerical expression / information as possible)	無し	無し
73	PLS show <b>negative project impact(s)</b> on farmers' level (With your reasons / Examples, numerical expression / information as possible)	無し	無し
74	PLS show <b>negative project impact(s)</b> on Government level (With your reasons / Examples, numerical expression / information as possible)	無し	無し
75	PLS show <b>negative project impact(s)</b> for natural environment (With your reasons / Examples, numerical expression / information as possible)	無し	無し
76	PLS show <b>negative project impact(s)</b> for agricultural sector (With your reasons / Examples, numerical expression / information as possible)	無し	無し
77	Is it correct that the <b>Super Goal of this Project is to raise farmers' income by means of introducing secondary crops?</b>	無し	無し
78	According to the Super Goal, is it correct that the <b>Project Target</b> of this Project are to upgrade the potential of NIA, with providing qualified staffs, making rational water managem't skills, as adapted the assignments?	無し	無し
79	Is it correct the Project has two major purpose as 1) To develop crop diversification by dint of secondary crops introduction and 2) To contribute for raising workability of irrigation facilities?	無し	無し
80	PLS explain what your Govt. has <b>other measures to fulfill the Project Targets</b> besides of this Project (Project/scheme title, organization in charge, budget, copy of TOR.)	無し	無し
81	PLS explain what the Govt. has <b>other measure to fulfill the Super Goals</b> besides of this Project (Project/scheme title, organization in charge, budget, copy of TOR.)	無し	無し
82	PLS describe <b>logic consistency among</b> Project Purpose, Project Targets and Super Goals, which stated in the Record of Discussion of the Phase II of this Project.	無し	無し
83	PLS explain <b>some policy alternations related with this project</b> from 1993 to present, if any.	無し	無し
84	PLS explain <b>effectiveness to the Project due to the policy alternation</b> if any.	無し	無し
85	PLS show <b>the Project Goals planned initially</b> and describe each aspect quantitatively and qualitatively as much as possible.	無し	無し

No.	質 問	回 答 (計画設計基準)	回 答 (水 管 理)
86	PLS show the Project Outputs planned initially and describe each aspect quantitatively and qualitatively as much as possible.	無し	無し
87	PLS show initial plan of verification tests of the manuals provided in Phase I ( What, when, where, who, to whom, how, how many through 5-years )	無し	無し
88	PLS show initial plan of case study(s) before Phase II commencement ( Why, what, when, where, who, to whom, how, how many through 5-years )	水文分野から先行 (P/A) の 5ヶ年PERT/CPMおよび業務成果と残業務を参照	無し
89	PLS show initial planned scope of establishing database before Phase II commencement ( Why, what, when, where, who, to whom, how, how many through 5-years )	無し	無し
90	PLS show initial planned scope of training to NIA staffs ( Why, what, when, where, who, to whom, how, how many through 5-years )	当部門作成の5ヶ年計画に計画・設計基準、MIS紹介、栽培等記載。対象はNIAの技術職員と中核農民。	無し
91	PLS show initial planned scope of training to nucleus farmers ( Why, what, when, where, who, to whom, how, how many through 5-years )	無し	無し
92	PLS itemize and explain preconditions for the initial Project Targets	無し	無し
93	PLS itemize and explain preconditions for the initial Project Outputs	無し	無し
94	PLS explain whether the interim evaluation gave some impact or alterations on the Project Outputs. (clarifying aspects, details as possible)	無し	無し
95	PLS give comments how you think effectiveness of the Project Outputs, if any (clarifying aspects, describe quantitatively and qualitatively)	無し	無し
96	PLS give comments what aspects are the reason for accomplishments of the Project Outputs (clarifying aspects, describe quantitatively and qualitatively)	無し	無し
97	PLS give comments what aspects are the reason for lacking accomplishments of the Project Outputs, if any (clarifying aspects, describe quantitatively and qualitatively)	無し	無し
98	PLS describe how the Govt. took measures to expand secondary diversified crops to meet with the initial purpose(s).	無し	無し
99	PLS describe pre-condition(s) for the Project Purposes before commencing Phase II. (93)	無し	無し
100	PLS describe how wide acreage to adapt the secondary diversified crops through this Project ( Locations, acreage, crop name, budget preparations, time schedule )	無し	無し
101	PLS describe how the Govt. will take measures to expand secondary diversified crops from now ( Locations, acreage, time schedule, budget preparations )	無し	無し
102	PLS describe how the Project was going to involve for modifying workability of irrigation facilities through this Project ( Locations, beneficial area acreage, scheduled manpowers, budget preparations, time schedule )	無し	無し
103	PLS describe how the Govt. was going to ensure the sustainability of engineering potentials to be obtained through the Project as initial set-up of Phase II ( details as possible )	無し	無し
104	PLS give comments what aspects are the reason for accomplishments of the Project Purposes (clarifying aspects, describe quantitatively and qualitatively)	無し	無し
105	PLS give comments what aspects are the reason for lacking accomplishments of the Project Purposes, if any (clarifying aspects, describe quantitatively and qualitatively)	無し	無し
106	PLS explain whether the interim evaluation gave some impact or alterations on the Project Purposes. (clarifying aspects, details as possible)	無し	無し

No.	質 問	回 答 (計画設計基準)	回 答 (水 管 理)
107	PLS describe how the Govt./NIA planned the Project Inputs ( Clarify items, describe quantitatively with time schedule before the Phase II ('93) )	無し	無し
108	PLS describe pre-condition(s) for the Project Inputs before commencing Phase II ('93)	無し	無し
109	PLS describe how the Project was going to involve for modifying workability of irrigation facilities through this Project ( Locations, beneficial area acreage, scheduled manpowers, budget preparations, time schedule )	無し	無し
110	PLS give comments what aspects are the reason for accomplishments of the Project Inputs ( clarifying aspects, describe quantitatively and qualitatively )	無し	無し
111	PLS give comments what aspects are the reason for lacking accomplishments of the Project Inputs, if any ( clarifying aspects, describe quantitatively and qualitatively )	無し	無し
112	PLS explain whether the interim evaluation gave some impact or alterations on the Project Inputs. ( clarifying aspects, details as possible )	無し	無し
113	PLS describe both Positive and Negative impact(s) on NIA level for Engineering aspects ( By each, quantitatively & qualitatively, detailed as possible )	無し	無し
114	PLS describe both Positive and Negative impact(s) on NIA level for Institutional aspects ( By each, quantitatively & qualitatively, detailed as possible )	無し	無し
115	PLS describe both Positive and Negative impact(s) on NIA level for Economical aspects ( By each, quantitatively & qualitatively, detailed as possible )	無し	無し
116	If not being found the impact(s) how will you approach for them ? ( on NIA level )	無し	無し
117	PLS describe both Positive and Negative impact(s) on Farmers' level for Engineering aspects ( By each, quantitatively & qualitatively, detailed as possible )	無し	無し
118	PLS describe both Positive and Negative impact(s) on Farmers' level for Institutional aspects ( By each, quantitatively & qualitatively, detailed as possible )	無し	無し
119	PLS describe both Positive and Negative impact(s) on Farmers' level for Economical aspects ( By each, quantitatively & qualitatively, detailed as possible )	無し	無し
120	PLS describe both Positive and Negative impact(s) on Farmers' level for social and cultural aspects ( By each, quantitatively & qualitatively, detailed as possible )	無し	無し
121	PLS describe both Positive and Negative impact(s) on Farmers' level for Environmental aspects ( By each, quantitatively & qualitatively, detailed as possible )	無し	無し
122	If not being found the impact(s) how will you approach for them ? ( on Farmers' level )	無し	無し
123	PLS describe both Positive and Negative impact(s) on Govt's level for Engineering aspects ( By each, quantitatively & qualitatively, detailed as possible )	無し	無し
124	PLS describe both Positive and Negative impact(s) on Govt's level for Institutional aspects ( By each, quantitatively & qualitatively, detailed as possible )	無し	無し
125	PLS describe both Positive and Negative impact(s) on Govt's level for Economical aspects ( By each, quantitatively & qualitatively, detailed as possible )	無し	無し
126	PLS describe both Positive and Negative impact(s) on Govt's level for social and cultural aspects ( By each, quantitatively & qualitatively, detailed as possible )	無し	無し
127	If not being found the impact(s) how will you approach for them ? ( on Govt. level )	無し	無し

No.	質 問	回 答 (計画設計基準)	回 答 (水 管 理)
128	PLS describe Impact Expanse and sphere of beneficiaries on both Positive and Negative on <b>Project level for Engineering aspects</b> ( By each, quantitatively & qualitatively, detailed as possible )	無し	無し
129	PLS describe Impact Expanse and sphere of beneficiaries on both Positive and Negative on <b>Sector level for Engineering aspects</b> ( By each, quantitatively & qualitatively, detailed as possible )	無し	無し
130	PLS describe Impact Expanse and sphere of beneficiaries on both Positive and Negative on <b>Reason(s) level for Engineering aspects</b> ( By each, quantitatively & qualitatively, detailed as possible )	無し	無し
131	PLS describe Impact Expanse and sphere of beneficiaries on both Positive and Negative on <b>Macro level for Engineering aspects</b> ( By each, quantitatively & qualitatively, detailed as possible )	無し	無し
132	PLS describe Impact Expanse and sphere of beneficiaries on both Positive and Negative on <b>Project level for Institutional aspects</b> ( By each, quantitatively & qualitatively, detailed as possible )	無し	無し
133	PLS describe Impact Expanse and sphere of beneficiaries on both Positive and Negative on <b>Sector level for Institutional aspects</b> ( By each, quantitatively & qualitatively, detailed as possible )	無し	無し
134	PLS describe Impact Expanse and sphere of beneficiaries on both Positive and Negative on <b>Reason(s) level for Institutional aspects</b> ( By each, quantitatively & qualitatively, detailed as possible )	無し	無し
135	PLS describe Impact Expanse and sphere of beneficiaries on both Positive and Negative on <b>Macro level for Institutional aspects</b> ( By each, quantitatively & qualitatively, detailed as possible )	無し	無し
136	PLS describe Impact Expanse and sphere of beneficiaries on both Positive and Negative on <b>Project level for Economical aspects</b> ( By each, quantitatively & qualitatively, detailed as possible )	無し	無し
137	PLS describe Impact Expanse and sphere of beneficiaries on both Positive and Negative on <b>Sector level for Economical aspects</b> ( By each, quantitatively & qualitatively, detailed as possible )	無し	無し
138	PLS describe Impact Expanse and sphere of beneficiaries on both Positive and Negative on <b>Region(s) level for Economical aspects</b> ( By each, quantitatively & qualitatively, detailed as possible )	無し	無し
139	PLS describe Impact Expanse and sphere of beneficiaries on both Positive and Negative on <b>Macro level for Economical aspects</b> ( By each, quantitatively & qualitatively, detailed as possible )	無し	無し
140	PLS describe Impact Expanse and sphere of beneficiaries on both Positive and Negative on <b>Project level for Social / Cultural aspects</b> ( By each, quantitatively & qualitatively, detailed as possible )	無し	無し
141	PLS describe Impact Expanse and sphere of beneficiaries on both Positive and Negative on <b>Sector level for Social / Cultural aspects</b> ( By each, quantitatively & qualitatively, detailed as possible )	無し	無し
142	PLS describe Impact Expanse and sphere of beneficiaries on both Positive and Negative on <b>Region(s) level for Social / Cultural aspects</b> ( By each, quantitatively & qualitatively, detailed as possible )	無し	無し

No.	質 問	回 答 (計画設計基準)	回 答 (水 管 理)
143	PLS describe Impact Expanse and sphere of beneficiaries on both Positive and Negative on <b>Macro level for Social / Cultural aspects</b> (By each, quantitatively & qualitatively, detailed as possible)	無し	無し
144	PLS describe Impact Expanse and sphere of beneficiaries on both Positive and Negative on <b>Project level for Environmental aspects</b> (By each, quantitatively & qualitatively, detailed as possible)	無し	無し
145	PLS describe Impact Expanse and sphere of beneficiaries on both Positive and Negative on <b>Sector level for Environmental aspects</b> (By each, quantitatively & qualitatively, detailed as possible)	無し	無し
146	PLS describe Impact Expanse and sphere of beneficiaries on both Positive and Negative on <b>Region(s) level for Environmental aspects</b> (By each, quantitatively & qualitatively, detailed as possible)	無し	無し
147	PLS describe Impact Expanse and sphere of beneficiaries on both Positive and Negative on <b>Macro level for Environmental aspects</b> (By each, quantitatively & qualitatively, detailed as possible)	無し	無し
148	Are there any alterations on responsibility allocations for the Project Implementation in NIA ?	無し	無し
149	In case of Yes, PLS give reason(s) and effect(s) due to the alteration.	無し	無し
150	Are there any scheduled alterations for near future on responsibility allocations for the Project Implementation in NIA ?	無し	無し
151	In case of Yes on Question-No.150, PLS give reason(s) and effect(s) expecting	無し	無し
152	Is it correct that the present Project organization will take rolls for making progresses on the same line, belonging to SOEM, NIA ?	無し	無し
153	Are there any plans / ideas to alternate the given rolls of the Project Team ? ( after next June )	無し	無し
154	PLS make a copy of organization chart of the Project Team, after leaving Japanese experts from next June. ( with task allocation by team member, schedule of task by subject, fund requirement by subject )	無し	無し
155	PLS give comments on the present potential of the Project Team for carrying out the given tasks ( with clarifying aspects, with reasons, details as possible )	無し	無し
156	PLS give comments on budget allocation for Project implementation, referring previous situations ( Sufficient or not, how much for satisfactions )	無し	無し
157	PLS give comments on human resources whether their capabilities could satisfy for further activities or not from the next June.	無し	無し
158	PLS explain how to complete the lack of assistances as Japanese experts shared for last 5 years ( By assignment, task allocations by individual ).	無し	無し
159	PLS explain the procedure to be decided the budget, referring the previous conditions.	無し	無し
160	PLS make copy of budget schedule of last 5 years ( NIA total and distinguishing the portion of the Project Team, detailed as much as possible )	無し	無し
161	PLS explain how to obtain the budget from the next June, which Japanese expert team has assisted for last 5-years.	無し	無し
162	If available to be allocated the budget, PLS show the budget list ( detailed as possible )	無し	無し
163	PLS explain official assistances, if have been adapted by present, its amount, its sources, obligations if being required.	無し	無し



No.	質問	回答 (計画設計基準)	回答 (水管理)
164	PLS give comments on possibilities for obtaining the assistances as present, or more than present from those supporters ( If possible, PLS give reasons )	無し	無し
165	PLS explain the possibility to generate the new financial sources by the Project Team or by other concerned organizations under NIA.	無し	無し
166	PLS explain how the concerned agency is managing the revenue collected from farmers as water cost	無し	無し
167	PLS explain whether some parts of the water cost revenue can be shifted as financial source for the Project Activities.	無し	無し
168	What are the specified measures to transfer the knowledges from officers and leading farmers to ordinary farmers ? Please explain your concrete plans.	無し	無し
169	What are the concrete measures to link between ordinary farmers and key farmers, for transferring obtained knowledges and skills through this project ?	技術移転は中核農民(IA職員)が一般農民(IA会員)へ行う研修で共有される。	無し
170	Please show organization chart of extension services to farmers, if any.	無し	無し
171	PLS give comments whether the dispatched experts are sufficient or not ( With reasons or examples )	1分野1専門家て妥当だが2分野を担当するのは困難。一部意志疎通に問題があった。また現地文化に馴染めない人が居た。	無し
172	PLS give comments on duration of this Phase II Project	DCIEP-IIの期間は妥当。この間に必要であった技術は完遂した。	無し
173	PLS give comments on assigned subjects for this Phase II Project	Phase-Iの目標であったDCPP導入に対し、DCIEP IIは妥当。	無し
174	PLS give overall comments on aspects which you think or feel better to change or revise as bilateral cooperation, through this Project.	DCIEP IIの課題完遂への2機関協力には2方存ろう。①水文技術を基盤とする水管理等技術面②品種を問わない収穫後処理施設開発。	無し
175	PLS give comments whether the subjects adopted through activities are sufficient or not ( With reasons or examples )	作物多様化導入に関する他の重要な事項は収穫後処理施設建設、農民組織化である(これら事項が望まれるとの意)	無し
176	PLS give comments on potentials of counterparts ( Both positive & negative, With reasons or examples )	C/P資質はNIA運営とJICA側の資質、T/Lの資質に依ってくる。C/Pには獲得技術をより波及させ得る資質を持つものも居た。	無し
177	PLS give comments on self-operation by themselves from next June ( Whether possible or not, with reasons )	無し	無し
178	PLS give assignment record from the commencement of this phase to present, per section, reasons if the assigner was changed during last 5 years )	無し	無し
179	PLS show concrete plan(s) to transfer the provided results to any successors	当部門に関し、機材化、セミナー、データ整理等水文技術はNIS受益者への研修で波及される。事例はAMRIS5ヶ年計画参照。	無し
180	PLS show how to utilize and develop the manuals by yourself from next year.	パイロットDCPP運営を通じ、現マニュアルの改正点を技術面と地域特性面より検証し、漸次改良を施す。	無し
181	PLS show how to increase well-trained nucleus farmers, with concrete target number, training methods, schedule and budget requirement, from next year. (Because seems necessary to increase the farmers who can train neighbors to develop the effect.	無し	無し
182	PLS show your prospects how to develop activities at NIA on Plan / Design Criteria after the Japanese experts' leave.	本件終了後も成果は従事者によりNIAの活動に貢献する。主要事項は①全栽培作物に関する総合管理計画確立への貢献 ②圃場管理施設実施把握調査と多様化促進計画立案への貢献③多様化促進のための施設導入と適正技術投入への貢献④NIS利用の適正水管理への貢献⑤適正水資源配分への貢献⑥適正土壌水分管理実現への貢献⑦研修継続による作物多様化促進への貢献	無し
183	PLS show how to manage revision of manuals by yourself from next year, for the subject of Plan and Design Criteria.	パイロットDCPPとNISの縦横的実施とセミナーでマニュアルの改善を図る。	無し
184	PLS show subjects to be scheduled as experimental construction with local materials, from next year, by yourselves.	無し	無し

Q&A 1.xls Q&A 1

No.	質 問	回 答 (計画設計基準)	回 答 (水 管 理)
185	PLS show your prospects how to develop activities at NIA on Information Management after the Japanese experts' leave.	無し	無し
186	PLS show how to develop & manage the database provided through this project, from next year.	無し	無し
187	PLS show your prospects how to develop activities at NIA on Water Management after the Japanese experts' leave.	無し	無し
188	PLS show how to develop & maintain remained subjects on Water Management, from next year, by yourself.	無し	無し
189	PLS show subjects to be researched related with Water Management, from next year, by yourselves.	無し	無し
190	PLS show what you did by yourselves to raise effects of results of Crop Cultivation after the assignment termination of Japanese expert.	無し	無し
191	PLS show your prospects how to develop activities at NIA on Crop Cultivation after the Japanese experts' leave.	無し	無し
192	PLS show how to develop & maintain remained subjects of experimental construction or monitoring for specimens, from next year, by yourself.	無し	無し

No.	質問	回答 (施設維持)	回答 (情報管理)
1	What are the recommendable crop(s) as secondary crop to meet with the Super Goal? ( PLS show with estimated demand, market prices, optimum cropping calendar by province )	無し	無し
2	PLS explain prioritized concrete measure(s) to extend secondary crop development scheme into farmers.	無し	無し
3	Have you ever noticed any schemes or projects related with this Project? ( Name, Term, Donor or Department, Finance, etc.)	無し	無し
4	PLS explain TOR or show Project Digest of IOSP and IOSP-II by World Bank	無し	無し
5	PLS give comparative explanations between this Project and the World Bank project.	無し	無し
6	PLS provide a copy of DCPPs' areas and organization charts	無し	無し
7	PLS provide statistical information as specified as : 1) Number of farm house, 2) Number of farmers, 3) rice cropped area, 4) Average annual income per household, 5) Average production of rice per household per year, 6) Average rice gate price.	無し	無し
8	PLS provide statistical information as specified as 1) Average annual income of middle class people living in urban ( per province ).	無し	無し
	PLS explain farmers' present conditions, which cannot grasp with statistics		
9	+ What are the main income sources of farmers, out of agriculture?	無し	無し
10	+ Averagely how much are they receiving per year or per month?	無し	無し
11	PLS explain how farmers are understanding on crop diversification.	無し	無し
12	PLS give your comments whether farmers prefer farming at other job opportunities for expanding income.	無し	無し
13	PLS comment whether the Project is effective or not, frankly, with reason(s)	効果的かつ持続可能。(但し、NIAによる運営面での支援があれば)	無し
14	PLS comment whether the Project implementation schedule is effective or not, with reason(s)	効果的かつ持続可能。(但し、NIAによる運営面での支援があれば)	無し
15	PLS comment what aspects are progress(ed) with this Project. (By each assignment)	計画された課題は完遂した。	無し
	PLS give your comments on training conducted through this project.		
16	+ Regarding its frequency	5ヶ年期限の本件で実施した研修は妥当。	無し
17	+ Regarding its scale of finance	NIA各部署の中堅技術者を対象に研修実施し妥当。	無し
18	+ Regarding its content taken in the training courses	研修は理解しやすく、e-教材利用の可能性や機器操作修練が進んだ。研修4事例。	無し
19	+ Regarding requests if any	研修性が講師として地方で研修を行う際研修機材の利用を希望。期限限定での研修機材の貸出しが求められる。	無し
20	+ Regarding aspects required to be revised	無し	無し
21	+ Regarding its effectiveness which you feel	無し	無し
22	What are major reasons of recent leaves of counterparts from the Project?	①個人としてより将来性のある状況を求め ②より安定的雇用環境を求めて移動した。	無し
23	PLS explain how to maintain technology after taking out counterparts from sections	無し	無し
24	PLS explain how to keep up-dating manuals after the project termination, by each assignment title adopting now.	無し	無し

CR&I VISOR&I

No.	質問	回答 (施設維持)	回答 (情報管理)
25	PLS give comments on cost efficiency for the Project, frankly.	無し	無し
26	PLS show records of annual detailed disbursement of the Project ('93 to present)	無し	無し
27	PLS give copy(s) of Govt. national development policy ( 5 year plan or equivalent)	無し	無し
28	PLS give copy(s) of Agri-sector development policy ( 5 year plan or equivalent)	無し	無し
29	PLS give copy(s) of Agri-sector action plan with budget ( recent 5-year )	無し	無し
30	PLS give information what the Govt. thinks crop diversification policy in recent.	無し	無し
31	PLS give information of the Govt's concrete plan(s) to extend crop diversification policy.	無し	無し
32	PLS give evidence(s) of market demand for secondary crops	無し	無し
33	PLS give record of market prices of secondary crops ( For recent 3 years, per crop, per month )	無し	無し
34	PLS give information or evidence(s) how deep farmers have wills for secondary crops.	無し	無し
35	PLS show new project purpose(s) as next phase from next year, regarding crop diversifications ( Purpose, Activity plan, Personnel affairs )	無し	無し
36	PLS show personnel affair plan from next year, considering continuation of the Project, at NIA level	無し	無し
37	PLS show budget plan from next year, considering continuation of the Project at NIA level	無し	無し
38	PLS show action plan from next year, considering continuation of the Project at NIA level	無し	無し
39	PLS show personnel affair plan from next year, considering continuation of the Project, at NIA level	無し	無し
40	PLS show how to manage the subject of upgrading NIA engineers by yourself from next year.	無し	無し
41	PLS give comments on accomplishment of the Project Outputs. ( Overall and with your specified aspects / examples, numerical expression / information as possible )	無し	無し
42	PLS give comments on efficiency of accomplishment of the Project Outputs, comparing Inputs. ( Overall and with your specified aspects / example, numerical expression / information as possible )	無し	無し
43	PLS give comments on quality and quantity of adopted Input through Phase II, with your idea ( Overall and with your specified aspects / examples, numerical expression / information as possible )	無し	無し
44	PLS give comments on Project outputs, whether they are as scheduled or not ( With your reason(s)/examples, numerical expression / information as possible )	無し	無し
45	PLS give comments on adapted project implementation schedule, whether appropriate or not. ( With your reasons, alternatives if not appropriate for the Phase II, )	無し	無し
46	PLS give comments on the difference between Outputs and the original plan if any, whether acceptable or not. ( With your reasons, alternatives if not appropriate for the Phase II, )	無し	無し
47	PLS show positive project impact(s) on NIA level (With your reasons / Examples, numerical expression / information as possible)	無し	無し
48	PLS show positive project impact(s) on MIS level (With your reasons / Examples, numerical expression / information as possible)	無し	無し
49	PLS show positive project impact(s) on farmers' level (With your reasons / Examples, numerical expression / information as possible)	無し	無し

No.	質問	回答 (施設維持)	回答 (情報管理)
50	PLS show <b>positive project impact(s)</b> on <b>Government level</b> (With your reasons / Examples, numerical expression / information as possible)	無し	無し
51	PLS show <b>positive project impact(s)</b> for <b>natural environment</b> (With your reasons / Examples, numerical expression / information as possible)	無し	無し
52	PLS show <b>positive project impact(s)</b> for <b>agri-cultural sector</b> (With your reasons / Examples, numerical expression / information as possible)	無し	無し
53	PLS give comments on <b>contributed factors</b> to expand project impact(s) on <b>NIA level</b> . ( With your reasons / Examples, numerical expression / information as possible, methods + measures + concerned authority(s) + cost )	無し	無し
54	PLS give comments on <b>contributed factors</b> to expand project impact(s) on <b>MIS level</b> . ( With your reasons / Examples, numerical expression / information as possible, methods + measures + concerned authority(s) + cost )	無し	無し
55	PLS give comments on <b>contributed factors</b> to expand project impact(s) on <b>farmers' level</b> . ( With your reasons / Examples, numerical expression / information as possible, methods + measures + concerned authority(s) + cost )	無し	無し
56	PLS give comments on <b>contributed factors</b> to expand project impact(s) on <b>Government level</b> . ( With your reasons / Examples, numerical expression / information as possible, methods + measures + concerned authority(s) + cost )	無し	無し
57	PLS give comments on <b>contributed factors</b> to expand project impact(s) on <b>natural environ- ment</b> . ( With your reasons / Examples, numerical expression / information as possible, methods + measures + concerned authority(s) + cost )	無し	無し
58	PLS give comments on <b>contributed factors</b> to expand project impact(s) on <b>Agri-sector</b> . ( With your reasons / Examples, numerical expression / information as possible, methods + measures + concerned authority(s) + cost )	無し	無し
59	PLS give comments on <b>inhibited factors</b> to expand project impact(s) on <b>NIA level</b> . ( With your reasons / Examples, numerical expression / information as possible, methods + measures + concerned authority(s) + cost )	無し	無し
60	PLS give comments on <b>inhibited factors</b> to expand project impact(s) on <b>MIS level</b> . ( With your reasons / Examples, numerical expression / information as possible, methods + measures + concerned authority(s) + cost )	無し	無し
61	PLS give comments on <b>inhibited factors</b> to expand project impact(s) on <b>farmers' level</b> . ( With your reasons / Examples, numerical expression / information as possible, methods + measures + concerned authority(s) + cost )	無し	無し
62	PLS give comments on <b>inhibited factors</b> to expand project impact(s) on <b>Government level</b> . ( With your reasons / Examples, numerical expression / information as possible, methods + measures + concerned authority(s) + cost )	無し	無し
63	PLS give comments on <b>inhibited factors</b> to expand project impact(s) on <b>natural environ- ment</b> . ( With your reasons / Examples, numerical expression / information as possible, methods + measures + concerned authority(s) + cost )	無し	無し
64	PLS give comments on <b>inhibited factors</b> to expand project impact(s) on <b>Agri-sector</b> . ( With your reasons / Examples, numerical expression / information as possible, methods + measures + concerned authority(s) + cost )	無し	無し

No.	質問	回答 (施設維持)	回答 (情報管理)
65	PLS show <b>positive project impact(s)</b> on NIA level (With your reasons / Examples, numerical expression / information as possible).	無し	無し
66	PLS show <b>positive project impact(s)</b> on MIS level (With your reasons / Examples, numerical expression / information as possible).	無し	無し
67	PLS show <b>positive project impact(s)</b> on farmers' level (With your reasons / Examples, numerical expression / information as possible).	無し	無し
68	PLS show <b>positive project impact(s)</b> on Government level (With your reasons / Examples, numerical expression / information as possible).	無し	無し
69	PLS show <b>positive project impact(s)</b> for natural environment (With your reasons / Examples, numerical expression / information as possible).	無し	無し
70	PLS show <b>positive project impact(s)</b> for agricultural sector (With your reasons / Examples, numerical expression / information as possible).	無し	無し
71	PLS show <b>negative project impact(s)</b> on NIA level (With your reasons / Examples, numerical expression / information as possible).	無し	無し
72	PLS show <b>negative project impact(s)</b> on MIS level (With your reasons / Examples, numerical expression / information as possible).	無し	無し
73	PLS show <b>negative project impact(s)</b> on farmers' level (With your reasons / Examples, numerical expression / information as possible).	無し	無し
74	PLS show <b>negative project impact(s)</b> on Government level (With your reasons / Examples, numerical expression / information as possible).	無し	無し
75	PLS show <b>negative project impact(s)</b> for natural environment (With your reasons / Examples, numerical expression / information as possible).	無し	無し
76	PLS show <b>negative project impact(s)</b> for agricultural sector (With your reasons / Examples, numerical expression / information as possible).	無し	無し
77	Is it correct that the Super Goal of this Project is to raise farmers' income by means of introducing secondary crops?	無し	無し
78	According to the Super Goal, is it correct that the Project Target of this Project are to upgrade the potential of NIA, with providing qualified staffs, making rational water managem't skills, as adopted the assignments?	無し	無し
79	Is it correct the Project has two major purpose as 1) To develop crop diversification by dint of secondary crops introduction and 2) To contribute for raising workability of irrigation facilities?	無し	無し
80	PLS explain what your Govt. has other measures to fulfill the Project Targets besides of this Project (Project/scheme title, organization in charge, budget, copy of TOR.)	無し	無し
81	PLS explain what the Govt. has other measure to fulfill the Super Goals besides of this Project (Project/scheme title, organization in charge, budget, copy of TOR.)	無し	無し
82	PLS describe logic consistency among Project Purpose, Project Targets and Super Goals, which stated in the Record of Discussion of the Phase II of this Project.	無し	無し
83	PLS explain some policy alternations related with this project from 1993 to present, if any.	無し	無し
84	PLS explain effectiveness to the Project due to the policy alternation if any.	無し	無し
85	PLS show the Project Goals planned initially and describe each aspect quantitatively and qualitatively as much as possible.	無し	無し

Q&A 1.xlsQ&A 1

No.	質 問	回 答 (施 設 維 持)	回 答 (情 報 管 理)
86	PLS show the Project Outputs planned initially and describe each aspect quantitatively and qualitatively as much as possible.	無し	無し
87	PLS show initial plan of verification tests of the manuals provided in Phase I ( What, when, where, who, to whom, how, how many through 5-years )	無し	無し
88	PLS show initial plan of case study(s) before Phase II commencement ( Why, what, when, where, who, to whom, how, how many through 5-years )	無し	無し
89	PLS show initial planed scope of establishing database before Phase II commencement ( Why, what, when, where, who, to whom, how, how many through 5-years )	無し	無し
90	PLS show initial planed scope of training to NIA staffs ( Why, what, when, where, who, to whom, how, how many through 5-years )	無し	無し
91	PLS show initial planed scope of training to nucleus farmers ( Why, what, when, where, who, to whom, how, how many through 5-years )	無し	無し
92	PLS itemize and explain preconditions for the initial Project Targets	無し	無し
93	PLS itemize and explain preconditions for the initial Project Outputs	無し	無し
94	PLS explain whether the interim evaluation gave some impact or alterations on the Project Outputs. (clarifying aspects, details as possible)	無し	無し
95	PLS give comments how you think effectiveness of the Project Outputs, if any (clarifying aspects, describe quantitatively and qualitatively)	無し	無し
96	PLS give comments what aspects are the reason for accomplishments of the Project Outputs (clarifying aspects, describe quantitatively and qualitatively)	無し	無し
97	PLS give comments what aspects are the reason for lacking accomplishments of the Project Outputs, if any (clarifying aspects, describe quantitatively and qualitatively)	無し	無し
98	PLS describe how the Govt. took measures to expand secondary diversified crops to meet with the initial purpose(s).	無し	無し
99	PLS describe pre-condition(s) for the Project Purposes before commencing Phase II (93)	無し	無し
100	PLS describe how wide acreage to adapt the secondary diversified crops through this Project ( Locations, acreage, crop name, budget preparations, time schedule )	無し	無し
101	PLS describe how the Govt. will take measures to expand secondary diversified crops from now ( Locations, acreage, time schedule, budget preparations )	無し	無し
102	PLS describe how the Project was going to involve for modifying workability of irrigation facilities through this Project ( Locations, beneficial area acreage, scheduled manpowers, budget preparations, time schedule )	無し	無し
103	PLS describe how the Govt. was going to ensure the sustainability of engineering potentials to be obtained through the Project as initial set-up of Phase II ( details as possible )	無し	無し
104	PLS give comments what aspects are the reason for accomplishments of the Project Purposes (clarifying aspects, describe quantitatively and qualitatively)	無し	無し
105	PLS give comments what aspects are the reason for lacking accomplishments of the Project Purposes, if any (clarifying aspects, describe quantitatively and qualitatively)	無し	無し
106	PLS explain whether the interim evaluation gave some impact or alterations on the Project Purposes. (clarifying aspects, details as possible)	無し	無し

084 1/10/04 1

No.	質問	回答 (施設維持)	回答 (情報管理)
107	PLS describe how the Govt. / NIA planned the Project Inputs ( Clarify items, describe quantitatively with time schedule before the Phase II ('93) )	無し	無し
108	PLS describe pre-condition(s) for the Project Inputs before commencing Phase II ('93)	無し	無し
109	PLS describe how the Project was going to involve for modifying workability of irrigation facilities through this Project ( Locations, beneficial area acreage, scheduled manpowers, budget preparations, time schedule )	無し	無し
110	PLS give comments what aspects are the reason for accomplishments of the Project Inputs ( clarifying aspects, describe quantitatively and qualitatively )	無し	無し
111	PLS give comments what aspects are the reason for lacking accomplishments of the Project Inputs, if any ( clarifying aspects, describe quantitatively and qualitatively )	無し	無し
112	PLS explain whether the interim evaluation gave some impact or alterations on the Project Inputs. ( clarifying aspects, details as possible )	無し	無し
113	PLS describe both Positive and Negative impact(s) on NIA level for Engineering aspects ( By each, quantitatively & qualitatively, detailed as possible )	無し	無し
114	PLS describe both Positive and Negative impact(s) on NIA level for Institutional aspects ( By each, quantitatively & qualitatively, detailed as possible )	無し	無し
115	PLS describe both Positive and Negative impact(s) on NIA level for Economical aspects ( By each, quantitatively & qualitatively, detailed as possible )	無し	無し
116	If not being found the impact(s) how will you approach for them ? ( on NIA level )	無し	無し
117	PLS describe both Positive and Negative impact(s) on Farmers' level for Engineering aspects ( By each, quantitatively & qualitatively, detailed as possible )	無し	無し
118	PLS describe both Positive and Negative impact(s) on Farmers' level for Institutional aspects ( By each, quantitatively & qualitatively, detailed as possible )	無し	無し
119	PLS describe both Positive and Negative impact(s) on Farmers' level for Economical aspects ( By each, quantitatively & qualitatively, detailed as possible )	無し	無し
120	PLS describe both Positive and Negative impact(s) on Farmers' level for social and cultural aspects ( By each, quantitatively & qualitatively, detailed as possible )	無し	無し
121	PLS describe both Positive and Negative impact(s) on Farmers' level for Environmental aspects ( By each, quantitatively & qualitatively, detailed as possible )	無し	無し
122	If not being found the impact(s) how will you approach for them ? ( on Farmers' level )	無し	無し
123	PLS describe both Positive and Negative impact(s) on Govt's level for Engineering aspects ( By each, quantitatively & qualitatively, detailed as possible )	無し	無し
124	PLS describe both Positive and Negative impact(s) on Govt's level for Institutional aspects ( By each, quantitatively & qualitatively, detailed as possible )	無し	無し
125	PLS describe both Positive and Negative impact(s) on Govt's level for Economical aspects ( By each, quantitatively & qualitatively, detailed as possible )	無し	無し
126	PLS describe both Positive and Negative impact(s) on Govt's level for social and cultural aspects ( By each, quantitatively & qualitatively, detailed as possible )	無し	無し
127	If not being found the impact(s) how will you approach for them ? ( on Govt. level )	無し	無し

Q&A 1.xlsQ&A 1



No.	質問	回答 (施設維持)	回答 (情報管理)
128	PLS describe Impact Expanse and sphere of beneficiaries on both Positive and Negative on <b>Project level for Engineering aspects</b> ( By each, quantitatively & qualitatively, detailed as possible )	無し	無し
129	PLS describe Impact Expanse and sphere of beneficiaries on both Positive and Negative on <b>Sector level for Engineering aspects</b> ( By each, quantitatively & qualitatively, detailed as possible )	無し	無し
130	PLS describe Impact Expanse and sphere of beneficiaries on both Positive and Negative on <b>Reason(s) level for Engineering aspects</b> ( By each, quantitatively & qualitatively, detailed as possible )	無し	無し
131	PLS describe Impact Expanse and sphere of beneficiaries on both Positive and Negative on <b>Macro level for Engineering aspects</b> ( By each, quantitatively & qualitatively, detailed as possible )	無し	無し
132	PLS describe Impact Expanse and sphere of beneficiaries on both Positive and Negative on <b>Project level for Institutional aspects</b> ( By each, quantitatively & qualitatively, detailed as possible )	無し	無し
133	PLS describe Impact Expanse and sphere of beneficiaries on both Positive and Negative on <b>Sector level for Institutional aspects</b> ( By each, quantitatively & qualitatively, detailed as possible )	無し	無し
134	PLS describe Impact Expanse and sphere of beneficiaries on both Positive and Negative on <b>Reason(s) level for Institutional aspects</b> ( By each, quantitatively & qualitatively, detailed as possible )	無し	無し
135	PLS describe Impact Expanse and sphere of beneficiaries on both Positive and Negative on <b>Macro level for Institutional aspects</b> ( By each, quantitatively & qualitatively, detailed as possible )	無し	無し
136	PLS describe Impact Expanse and sphere of beneficiaries on both Positive and Negative on <b>Project level for Economical aspects</b> ( By each, quantitatively & qualitatively, detailed as possible )	無し	無し
137	PLS describe Impact Expanse and sphere of beneficiaries on both Positive and Negative on <b>Sector level for Economical aspects</b> ( By each, quantitatively & qualitatively, detailed as possible )	無し	無し
138	PLS describe Impact Expanse and sphere of beneficiaries on both Positive and Negative on <b>Region(s) level for Economical aspects</b> ( By each, quantitatively & qualitatively, detailed as possible )	無し	無し
139	PLS describe Impact Expanse and sphere of beneficiaries on both Positive and Negative on <b>Macro level for Economical aspects</b> ( By each, quantitatively & qualitatively, detailed as possible )	無し	無し
140	PLS describe Impact Expanse and sphere of beneficiaries on both Positive and Negative on <b>Project level for Social / Cultural aspects</b> ( By each, quantitatively & qualitatively, detailed as possible )	無し	無し
141	PLS describe Impact Expanse and sphere of beneficiaries on both Positive and Negative on <b>Sector level for Social / Cultural aspects</b> ( By each, quantitatively & qualitatively, detailed as possible )	無し	無し
142	PLS describe Impact Expanse and sphere of beneficiaries on both Positive and Negative on <b>Region(s) level for Social / Cultural aspects</b> ( By each, quantitatively & qualitatively, detailed as possible )	無し	無し

No.	質問	回答 (施設維持)	回答 (情報管理)
143	PLS describe Impact Expanse and sphere of beneficiaries on both Positive and Negative on <b>Macro level for Social / Cultural aspects</b> ( By each, quantitatively & qualitatively, detailed as possible )	無し	無し
144	PLS describe Impact Expanse and sphere of beneficiaries on both Positive and Negative on <b>Project level for Environmental aspects</b> ( By each, quantitatively & qualitatively, detailed as possible )	無し	無し
145	PLS describe Impact Expanse and sphere of beneficiaries on both Positive and Negative on <b>Sector level for Environmental aspects</b> ( By each, quantitatively & qualitatively, detailed as possible )	無し	無し
146	PLS describe Impact Expanse and sphere of beneficiaries on both Positive and Negative on <b>Region(s) level for Environmental aspects</b> ( By each, quantitatively & qualitatively, detailed as possible )	無し	無し
147	PLS describe Impact Expanse and sphere of beneficiaries on both Positive and Negative on <b>Macro level for Environmental aspects</b> ( By each, quantitatively & qualitatively, detailed as possible )	無し	無し
148	Are there any alterations on responsibility allocations for the Project Implementation in NIA ?	無し	無し
149	In case of Yes, PLS give reason(s) and effect(s) due to the alteration.	無し	無し
150	Are there any scheduled alterations for near future on responsibility allocations for the Project Implementation in NIA ?	無し	無し
151	In case of Yes on Question-No.150, PLS give reason(s) and effect(s) expecting	無し	無し
152	Is it correct that the present Project organization will take rolls for making progresses on the same line, belonging to SOJM, NIA ?	無し	無し
153	Are there any plans / ideas to alternate the given rolls of the Project Team ? ( after next June )	無し	無し
154	PLS make a copy of organization chart of the Project Team, after leaving Japanese experts from next June. ( with task allocation by team member, schedule of task by subject, fund requirement by subject )	無し	無し
155	PLS give comments on the present potential of the Project Team for carrying out the given tasks ( with clarifying aspects, with reasons, details as possible )	無し	無し
156	PLS give comments on budget allocation for Project implementation, referring previous situations ( Sufficient or not, how much for satisfactions )	無し	無し
157	PLS give comments on human resources whether their capabilities could satisfy for further activities or not from the next June.	無し	無し
158	PLS explain how to complete the lack of assistances as Japanese experts shared for last 5 years ( By assignment, task allocations by individual ).	無し	無し
159	PLS explain the procedure to be decided the budget, referring the previous conditions.	無し	無し
160	PLS make copy of budget schedule of last 5 years ( NIA total and distinguishing the portion of the Project Team, detailed as much as possible )	無し	無し
161	PLS explain how to obtain the budget from the next June, which Japanese expert team has assisted for last 5-years.	無し	無し
162	If available to be allocated the budget, PLS show the budget list ( detailed as possible )	無し	無し
163	PLS explain official assistances, if have been adapted by present, its amount, its sources, obligations if being required.	無し	無し

No.	質問	回答 (施設維持)	回答 (情報管理)
164	PLS give comments on possibilities for obtaining the assistances as present, or more than present from those supporters (If possible, PLS give reasons)	無し	無し
165	PLS explain the possibility to generate the new financial sources by the Project Team or by other concerned organizations under NIA	無し	無し
166	PLS explain how the concerned agency is managing the revenue collected from farmers as water cost	無し	無し
167	PLS explain whether some parts of the water cost revenue can be shifted as financial source for the Project Activities.	無し	無し
168	What are the specified measures to transfer the knowledges from officers and leading farmers to ordinary farmers? Please explain your concrete plans.	無し	無し
169	What are the concrete measures to link between ordinary farmers and key farmers, for transferring obtained knowledges and skills through this project?	無し	無し
170	Please show organization chart of extension services to farmers, if any.	無し	無し
171	PLS give comments whether the dispatched experts are sufficient or not (With reasons or examples)	無し	無し
172	PLS give comments on duration of this Phase II Project	無し	無し
173	PLS give comments on assigned subjects for this Phase II Project	無し	無し
174	PLS give overall comments on aspects which you think or feel better to change or revise as bilateral cooperation, through this Project.	無し	無し
175	PLS give comments whether the subjects adopted through activities are sufficient or not (With reasons or examples)	無し	無し
176	PLS give comments on potentials of counterparts (Both positive & negative, With reasons or examples)	無し	無し
177	PLS give comments on self-operation by themselves from next June (Whether possible or not, with reasons)	無し	無し
178	PLS give assignment record from the commencement of this phase to present, per section, reasons if the assigner was changed during last 5 years)	無し	無し
179	PLS show concrete plan(s) to transfer the provided results to any successors	無し	無し
180	PLS show how to utilize and develop the manuals by yourself from next year.	無し	無し
181	PLS show how to increase well-trained nucleus farmers, with concrete target number, training methods, schedule and budget requirement, from next year. Because seems necessary to increase the farmers who can train neighbors to develop the effect.	無し	無し
182	PLS show your prospects how to develop activities at NIA on Plan / Design Criteria after the Japanese experts' leave.	無し	無し
183	PLS show how to manage revision of manuals by yourself from next year, for the subject of Plan and Design Criteria.	無し	無し
184	PLS show subjects to be scheduled as experimental construction with local materials, from next year, by yourselves.	本件はほぼ完了し、従事者はこれまでの延長での業務を望んでる。NIAの雇用に対する支援があれば率先して継続を行う。	無し

Q&A 1.xls/Q&A 1

No.	質問	回答 (施設維持)	回答 (情報管理)
185	PLS show your prospects how to develop activities at NIA on Information Management after the Japanese experts' leave.	無し	本件成果は新設されるCOMBISCONへ発展的に吸収され①情報管理手段として貢献②NIAの適正情報管理として貢献③意志決定機能の高度化に貢献する。
186	PLS show how to develop & manage the database provided through this project, from next year.	無し	新設COMBISCONを軸に、LAN, WANを取り込み、中央-地方間の情報交換手段として発展させ
187	PLS show your prospects how to develop activities at NIA on Water Management after the Japanese experts' leave.	無し	無し
188	PLS show how to develop & maintain remained subjects on Water Management, from next year, by yourself.	無し	無し
189	PLS show subjects to be researched related with Water Management, from next year, by yourselves.	無し	無し
190	PLS show what you did by yourselves to raise effects of results of Crop Cultivation after the assignment termination of Japanese expert.	無し	無し
191	PLS show your prospects how to develop activities at NIA on Crop Cultivation after the Japanese experts' leave.	無し	無し
192	PLS show how to develop & maintain remained subjects of experimental construction or monitoring for specimens, from next year, by yourself.	本件は新設組織に継承され、実証調査を継続してより完成度を増して行く。	無し

No.	質問	回答 (栽培)
1	What are the recommendable crop(s) as secondary crop to meet with the Super Goal? (P.L.S show with estimated demand, market prices, optimum cropping calendar by province)	口標推奨 ①ニガウリ②キャベツ③ニンジン④ナス⑤ニンニク⑥クマネギ⑦カボチャ⑧ナガササグ⑨トウモロコシ⑩トウガラシ⑪トマト
2	P.L.S explain prioritized concrete measure(s) to extend secondary crop development scheme into farmers.	①畑作物灌漑水路建設②畑作物栽培技能を有する中核者の育成
3	Have you ever noticed any schemes or projects related with this Project? (Name, Term, Donor or Department, Finance, etc.)	Development of High Value Crops
4	P.L.S explain TOR or show Project Digest of IOSP and IOSP-II by World Bank	無し
5	P.L.S give comparative explanations between this Project and the World Bank project.	無し
6	P.L.S provide a copy of DCPP's areas and organization charts	無し
7	P.L.S provide statistical information as specified as : 1) Number of farm house, 2) Number of farmers, 3) rice cropped area, 4) Average annual income per household, 5) Average production of rice per household per year, 6) Average rice rate price.	無し
8	P.L.S provide statistical information as specified as 1) Average annual income of middle class people living in urban ( per province).	無し
	P.L.S explain farmers' present conditions, which cannot grasp with statistics	
9	+ What are the main income sources of farmers, out of agriculture?	①露天小売商②運転手③大工④その他
10	+ Averagely how much are they receiving per year or per month?	無し
11	P.L.S explain how farmers are understanding on crop diversification.	高価なものでありより労働荷重と誤解している。
12	P.L.S give your comments whether farmers prefer farming at other job opportunities for expanding income.	適正規模農家は営農拡大を希望。属農家は耕作放棄をしない。
13	P.L.S comment whether the Project is effective or not, frankly, with reason(s)	Tanauan, Bustos, Bulacan DCPPの農民が示したように非常に有効である。以前ほんの少数であった栽培が今多品種を栽培している。
14	P.L.S comment whether the Project implementation schedule is effective or not, with reason(s)	栽培部門として本件実施計画は効果的であった。作物栽培量増加、栽培管理の高度化、収穫作物の高需要。
15	P.L.S comment what aspects are progress(ed) with this Project. (By each assignment)	作物栽培の多様化、高収量化
	P.L.S give your comments on training conducted through this project :	
16	+ Regarding its frequency	年1回研修('94-'96) 回数は妥当
17	+ Regarding its scale of trainee	NIA各部局の中堅技術者を対象に研修実施し妥当。
18	+ Regarding its content taken in the training courses	需要に合致し妥当。
19	+ Regarding requests if any	フォローアップ研修を望む。
20	+ Regarding aspects required to be revised	特に無し。
21	+ Regarding its effectiveness which you feel	無し
22	What are major reasons of recent leaves of counterparts from the Project?	退職職員の個人的理由による。
23	P.L.S explain how to maintain technology after taking out counterparts from sections	専門家は核となる知識を要する。
24	P.L.S explain how to keep up-dating manuals after the project termination, by each assignment title adopting now.	調査の更新とその結果のまとめを恒常的に行う。

No.	質 問	回 答 (裁 培)
25	PLS give comments on cost efficiency for the Project, frankly.	無し
26	PLS show records of annual detailed disbursement of the Project ('93 to present)	無し
27	PLS give copy(s) of Govt. national development policy ( 5 year plan or equivalent)	無し
28	PLS give copy(s) of Agri-sector development policy ( 5 year plan or equivalent)	無し
29	PLS give copy(s) of Agri-sector action plan with budget ( recent 5-year )	無し
30	PLS give information what the Govt. thinks crop diversification policy in recent.	政府は非常に重要なものと位置付けている。
31	PLS give information of the Govt's concrete plan(s) to extend crop diversification policy.	High Value Crops Projectを実践する。
32	PLS give evidence(s) of market demand for secondary crops	無し
33	PLS give record of market prices of secondary crops ( For recent 3 years, per crop, per month )	無し
34	PLS give information or evidence(s) how deep farmers have wills for secondary crops.	畑作物灌漑用水路改修を主体とする圃場改良と新作物関連知識および栽培技術習得を熱望している。
35	PLS show new project purpose(s) as next phase from next year, regarding crop diversifications ( Purpose, Activity plan, Personnel affairs )	無し
36	PLS show personnel affair plan from next year, considering continuation of the Project, at NIA level	NIA中央事務所の一部としてのIECに継承される。
37	PLS show budget plan from next year, considering continuation of the Project at NIA level	無し
38	PLS show action plan from next year, considering continuation of the Project at NIA level	無し
39	PLS show personnel affair plan from next year, considering continuation of the Project, at NIA level	無し
40	PLS show how to manage the subject of upgrading NIA engineers by yourself from next year.	無し
41	PLS give comments on accomplishment of the Project Outputs. ( Overall and with your specified aspects / examples, numerical expression / information as possible )	本件成果の達成度は非常に良い。
42	PLS give comments on efficiency of accomplishment of the Project Outputs, comparing Inputs. ( Overall and with your specified aspects / example, numerical expression / information as possible )	無し
43	PLS give comments on quality and quantity of adopted Input through Phase II, with your idea ( Overall and with your specified aspects / examples, numerical expression / information as possible )	無し
44	PLS give comments on Project outputs, whether they are as scheduled or not ( With your reason(s)/examples, numerical expression / information as possible )	無し
45	PLS give comments on adapted project implementation schedule, whether appropriate or not. ( With your reasons, alternatives if not appropriate for the Phase II. )	無し
46	PLS give comments on the difference between Outputs and the original plan if any, whether acceptable or not. ( With your reasons, alternatives if not appropriate for the Phase II. )	無し
47	PLS show positive project impact(s) on NIA level (With your reasons / Examples, numerical expression / information as possible)	土地利用率の向上。
48	PLS show positive project impact(s) on MIS level (With your reasons / Examples, numerical expression / information as possible)	作物生産量の増加。
49	PLS show positive project impact(s) on farmers' level (With your reasons / Examples, numerical expression / information as possible)	雇用機会の拡大

No.	質 問	回 答 (裁 培)
50	PLS show <b>positive project impact(s)</b> on <b>Government level</b> (With your reasons / Examples, numerical expression / information as possible)	輸入作物の減少
51	PLS show <b>positive project impact(s)</b> for <b>natural environment</b> (With your reasons / Examples, numerical expression / information as possible)	農村自然環境の美化促進
52	PLS show <b>positive project impact(s)</b> for <b>agri-cultural sector</b> (With your reasons / Examples, numerical expression / information as possible)	農業関連技術職員の増加
53	PLS give comments on <b>contributed factors</b> to expand project impact(s) on <b>NIA level</b> . ( With your reasons / Examples, numerical expression / information as possible, methods + measures + concerned authority(s) + cost .)	NIAの全国レベルでの作物多様化事業の実施促進化
54	PLS give comments on <b>contributed factors</b> to expand project impact(s) on <b>MIS level</b> . ( With your reasons / Examples, numerical expression / information as possible, methods + measures + concerned authority(s) + cost .)	農家収入の増加による徴収水利費額の拡大
55	PLS give comments on <b>contributed factors</b> to expand project impact(s) on <b>farmers' level</b> . ( With your reasons / Examples, numerical expression / information as possible, methods + measures + concerned authority(s) + cost .)	農家が適正な収入を確保できれば、水利費徴収上の問題は無い。
56	PLS give comments on <b>contributed factors</b> to expand project impact(s) on <b>Government level</b> . ( With your reasons / Examples, numerical expression / information as possible, methods + measures + concerned authority(s) + cost .)	海外債務減少への貢献。
57	PLS give comments on <b>contributed factors</b> to expand project impact(s) on <b>natural environment</b> . ( With your reasons / Examples, numerical expression / information as possible, methods + measures + concerned authority(s) + cost .)	無し
58	PLS give comments on <b>contributed factors</b> to expand project impact(s) on <b>Agri-sector</b> . ( With your reasons / Examples, numerical expression / information as possible, methods + measures + concerned authority(s) + cost .)	農業関連産業改善への貢献。
59	PLS give comments on <b>inhibited factors</b> to expand project impact(s) on <b>NIA level</b> . ( With your reasons / Examples, numerical expression / information as possible, methods + measures + concerned authority(s) + cost .)	無し
60	PLS give comments on <b>inhibited factors</b> to expand project impact(s) on <b>MIS level</b> . ( With your reasons / Examples, numerical expression / information as possible, methods + measures + concerned authority(s) + cost .)	無し
61	PLS give comments on <b>inhibited factors</b> to expand project impact(s) on <b>farmers' level</b> . ( With your reasons / Examples, numerical expression / information as possible, methods + measures + concerned authority(s) + cost .)	無し
62	PLS give comments on <b>inhibited factors</b> to expand project impact(s) on <b>Government level</b> . ( With your reasons / Examples, numerical expression / information as possible, methods + measures + concerned authority(s) + cost .)	無し
63	PLS give comments on <b>inhibited factors</b> to expand project impact(s) on <b>natural environment</b> . ( With your reasons / Examples, numerical expression / information as possible, methods + measures + concerned authority(s) + cost .)	無し
64	PLS give comments on <b>inhibited factors</b> to expand project impact(s) on <b>Agri-sector</b> . ( With your reasons / Examples, numerical expression / information as possible, methods + measures + concerned authority(s) + cost .)	無し

Q&A 1 vs Q&A 1

No.	質 問	回 答 (栽 培)
65	PLS show <b>positive project impact(s)</b> on NIA level (With your reasons / Examples, numerical expression / information as possible)	無し
66	PLS show <b>positive project impact(s)</b> on MIS level (With your reasons / Examples, numerical expression / information as possible)	無し
67	PLS show <b>positive project impact(s)</b> on farmers' level (With your reasons / Examples, numerical expression / information as possible)	無し
68	PLS show <b>positive project impact(s)</b> on Government level (With your reasons / Examples, numerical expression / information as possible)	無し
69	PLS show <b>positive project impact(s)</b> for natural environment (With your reasons / Examples, numerical expression / information as possible)	無し
70	PLS show <b>positive project impact(s)</b> for agricultural sector (With your reasons / Examples, numerical expression / information as possible)	無し
71	PLS show <b>negative project impact(s)</b> on NIA level (With your reasons / Examples, numerical expression / information as possible)	無し
72	PLS show <b>negative project impact(s)</b> on MIS level (With your reasons / Examples, numerical expression / information as possible)	無し
73	PLS show <b>negative project impact(s)</b> on farmers' level (With your reasons / Examples, numerical expression / information as possible)	無し
74	PLS show <b>negative project impact(s)</b> on Government level (With your reasons / Examples, numerical expression / information as possible)	無し
75	PLS show <b>negative project impact(s)</b> for natural environment (With your reasons / Examples, numerical expression / information as possible)	無し
76	PLS show <b>negative project impact(s)</b> for agricultural sector (With your reasons / Examples, numerical expression / information as possible)	無し
77	Is it correct that the Super Goal of this Project is to raise farmers' income by means of introducing secondary crops ?	正しい
78	According to the Super Goal, is it correct that the Project Target of this Project are to upgrade the potential of NIA, with providing qualified staffs, making rational water managem't skills, as adapted the assignments ?	正しい
79	Is it correct the Project has two major purpose as 1) To develop crop diversification by dint of secondary crops introduction and 2) To contribute for raising workability of irrigation facilities ?	正しい
80	PLS explain what your Govt. has other measures to fulfill the Project Targets besides of this Project ( Project/scheme title, organization in charge, budget, copy of TOR.)	無し
81	PLS explain what the Govt. has other measure to fulfill the Super Goals besides of this Project ( Project/scheme title, organization in charge, budget, copy of TOR.)	無し
82	PLS describe logic consistency among Project Purpose, Project Targets and Super Goals, which stated in the Record of Discussion of the Phase II of this Project.	無し
83	PLS explain some policy alternations related with this project from 1993 to present, if any.	無し
84	PLS explain effectiveness to the Project due to the policy alternation if any.	無し
85	PLS show the Project Goals planned initially and describe each aspect quantitatively and qualitatively as much as possible.	無し

Q&A 1.xlsQ&A 1



No.	質 問	回 答 (裁 培)
86	PLS show <b>the Project Outputs planned initially</b> and describe each aspect quantitatively and qualitatively as much as possible.	無し
87	PLS show <b>initial plan of verification tests</b> of the manuals provided in Phase I ( What, when, where, who, to whom, how, how many through 5-years )	無し
88	PLS show <b>initial plan of case study(s)</b> before Phase II commencement ( Why, what, when, where, who, to whom, how, how many through 5-years )	無し
89	PLS show <b>initial planned scope of establishing database</b> before Phase II commencement ( Why, what, when, where, who, to whom, how, how many through 5-years )	無し
90	PLS show <b>initial planned scope of training to NIA staffs</b> ( Why, what, when, where, who, to whom, how, how many through 5-years )	無し
91	PLS show <b>initial planned scope of training to nucleus farmers</b> ( Why, what, when, where, who, to whom, how, how many through 5-years )	無し
92	PLS itemize and explain <b>preconditions for the initial Project Targets</b>	無し
93	PLS itemize and explain <b>preconditions for the initial Project Outputs</b>	無し
94	PLS explain whether the <b>interim evaluation gave some impact or alterations</b> on the Project Outputs. (clarifying aspects, details as possible)	無し
95	PLS give <b>comments how you think effectiveness of the Project Outputs</b> , if any (clarifying aspects, describe quantitatively and qualitatively)	無し
96	PLS give comments what aspects are the <b>reason for accomplishments of the Project Outputs</b> (clarifying aspects, describe quantitatively and qualitatively)	無し
97	PLS give comments what aspects are the <b>reason for lacking accomplishments of the Project Outputs</b> , if any (clarifying aspects, describe quantitatively and qualitatively)	無し
98	PLS describe how the Govt. took measures to expand secondary diversified crops to meet with the initial purpose(s).	無し
99	PLS describe <b>pre-condition(s) for the Project Purposes before commencing Phase II</b> ('93)	無し
100	PLS describe how wide acreage to adapt the secondary diversified crops through this Project ( Locations, acreage, crop name, budget preparations, time schedule )	無し
101	PLS describe how the Govt. will take measures to expand secondary diversified crops from now ( Locations, acreage, time schedule, budget preparations )	無し
102	PLS describe how the Project was going to involve for modifying workability of irrigation facilities through this Project ( Locations, beneficial area acreage, scheduled manpowers, budget preparations, time schedule )	無し
103	PLS describe how the Govt. was going to ensure the sustainability of engineering potentials to be obtained through the Project as initial set-up of Phase II ( details as possible )	無し
104	PLS give comments what aspects are the reason for accomplishments of the Project Purposes (clarifying aspects, describe quantitatively and qualitatively)	無し
105	PLS give comments what aspects are the reason for lacking accomplishments of the Project Purposes, if any (clarifying aspects, describe quantitatively and qualitatively)	無し
106	PLS explain whether the interim evaluation gave some impact or alterations on the Project Purposes. (clarifying aspects, details as possible)	無し

No.	質 問	回 答 (裁 培)
107	PLS describe how the Govt. / NIA planned the Project Inputs ( Clarify items, describe quantitatively with time schedule before the Phase II ('93) )	無し
108	PLS describe pre-condition(s) for the Project Inputs before commencing Phase II ('93)	無し
109	PLS describe how the Project was going to involve for modifying workability of irrigation facilities through this Project ( Locations, beneficial area acreage, scheduled manpowers, budget preparations, time schedule )	無し
110	PLS give comments what aspects are the reason for accomplishments of the Project Inputs ( clarifying aspects, describe quantitatively and qualitatively )	無し
111	PLS give comments what aspects are the reason for lacking accomplishments of the Project Inputs, if any ( clarifying aspects, describe quantitatively and qualitatively )	無し
112	PLS explain whether the interim evaluation gave some impact or alterations on the Project Inputs. ( clarifying aspects, details as possible )	無し
113	PLS describe both Positive and Negative impact(s) on NIA level for Engineering aspects ( By each, quantitatively & qualitatively, detailed as possible )	無し
114	PLS describe both Positive and Negative impact(s) on NIA level for Institutional aspects ( By each, quantitatively & qualitatively, detailed as possible )	無し
115	PLS describe both Positive and Negative impact(s) on NIA level for Economical aspects ( By each, quantitatively & qualitatively, detailed as possible )	無し
116	If not being found the impact(s) how will you approach for them ? ( on NIA level )	無し
117	PLS describe both Positive and Negative impact(s) on Farmers' level for Engineering aspects ( By each, quantitatively & qualitatively, detailed as possible )	無し
118	PLS describe both Positive and Negative impact(s) on Farmers' level for Institutional aspects ( By each, quantitatively & qualitatively, detailed as possible )	無し
119	PLS describe both Positive and Negative impact(s) on Farmers' level for Economical aspects ( By each, quantitatively & qualitatively, detailed as possible )	無し
120	PLS describe both Positive and Negative impact(s) on Farmers' level for social and cultural aspects ( By each, quantitatively & qualitatively, detailed as possible )	無し
121	PLS describe both Positive and Negative impact(s) on Farmers' level for Environmental aspects ( By each, quantitatively & qualitatively, detailed as possible )	無し
122	If not being found the impact(s) how will you approach for them ? ( on Farmers' level )	無し
123	PLS describe both Positive and Negative impact(s) on Govt's level for Engineering aspects ( By each, quantitatively & qualitatively, detailed as possible )	無し
124	PLS describe both Positive and Negative impact(s) on Govt's level for Institutional aspects ( By each, quantitatively & qualitatively, detailed as possible )	無し
125	PLS describe both Positive and Negative impact(s) on Govt's level for Economical aspects ( By each, quantitatively & qualitatively, detailed as possible )	無し
126	PLS describe both Positive and Negative impact(s) on Govt's level for social and cultural aspects ( By each, quantitatively & qualitatively, detailed as possible )	無し
127	If not being found the impact(s) how will you approach for them ? ( on Govt. level )	無し

No.	質 問	回 答 (裁 培)
128	PLS describe Impact Expanse and sphere of beneficiaries on both Positive and Negative on <b>Project level for Engineering aspects</b> ( By each, quantitatively & qualitatively, detailed as possible )	無し
129	PLS describe Impact Expanse and sphere of beneficiaries on both Positive and Negative on <b>Sector level for Engineering aspects</b> ( By each, quantitatively & qualitatively, detailed as possible )	無し
130	PLS describe Impact Expanse and sphere of beneficiaries on both Positive and Negative on <b>Reason(s) level for Engineering aspects</b> ( By each, quantitatively & qualitatively, detailed as possible )	無し
131	PLS describe Impact Expanse and sphere of beneficiaries on both Positive and Negative on <b>Macro level for Engineering aspects</b> ( By each, quantitatively & qualitatively, detailed as possible )	無し
132	PLS describe Impact Expanse and sphere of beneficiaries on both Positive and Negative on <b>Project level for Institutional aspects</b> ( By each, quantitatively & qualitatively, detailed as possible )	無し
133	PLS describe Impact Expanse and sphere of beneficiaries on both Positive and Negative on <b>Sector level for Institutional aspects</b> ( By each, quantitatively & qualitatively, detailed as possible )	無し
134	PLS describe Impact Expanse and sphere of beneficiaries on both Positive and Negative on <b>Reason(s) level for Institutional aspects</b> ( By each, quantitatively & qualitatively, detailed as possible )	無し
135	PLS describe Impact Expanse and sphere of beneficiaries on both Positive and Negative on <b>Macro level for Institutional aspects</b> ( By each, quantitatively & qualitatively, detailed as possible )	無し
136	PLS describe Impact Expanse and sphere of beneficiaries on both Positive and Negative on <b>Project level for Economical aspects</b> ( By each, quantitatively & qualitatively, detailed as possible )	無し
137	PLS describe Impact Expanse and sphere of beneficiaries on both Positive and Negative on <b>Sector level for Economical aspects</b> ( By each, quantitatively & qualitatively, detailed as possible )	無し
138	PLS describe Impact Expanse and sphere of beneficiaries on both Positive and Negative on <b>Region(s) level for Economical aspects</b> ( By each, quantitatively & qualitatively, detailed as possible )	無し
139	PLS describe Impact Expanse and sphere of beneficiaries on both Positive and Negative on <b>Macro level for Economical aspects</b> ( By each, quantitatively & qualitatively, detailed as possible )	無し
140	PLS describe Impact Expanse and sphere of beneficiaries on both Positive and Negative on <b>Project level for Social / Cultural aspects</b> ( By each, quantitatively & qualitatively, detailed as possible )	無し
141	PLS describe Impact Expanse and sphere of beneficiaries on both Positive and Negative on <b>Sector level for Social / Cultural aspects</b> ( By each, quantitatively & qualitatively, detailed as possible )	無し
142	PLS describe Impact Expanse and sphere of beneficiaries on both Positive and Negative on <b>Region(s) level for Social / Cultural aspects</b> ( By each, quantitatively & qualitatively, detailed as possible )	無し

No.	質問	回答 (栽培)
143	PLS describe Impact Expanse and sphere of beneficiaries on both Positive and Negative on Macro level for Social / Cultural aspects ( By each, quantitatively & qualitatively, detailed as possible )	無し
144	PLS describe Impact Expanse and sphere of beneficiaries on both Positive and Negative on Project level for Environmental aspects ( By each, quantitatively & qualitatively, detailed as possible )	無し
145	PLS describe Impact Expanse and sphere of beneficiaries on both Positive and Negative on Sector level for Environmental aspects ( By each, quantitatively & qualitatively, detailed as possible )	無し
146	PLS describe Impact Expanse and sphere of beneficiaries on both Positive and Negative on Region(s) level for Environmental aspects ( By each, quantitatively & qualitatively, detailed as possible )	無し
147	PLS describe Impact Expanse and sphere of beneficiaries on both Positive and Negative on Macro level for Environmental aspects ( By each, quantitatively & qualitatively, detailed as possible )	無し
148	Are there any alterations on responsibility allocations for the Project Implementation in NIA ?	無し
149	In case of Yes, PLS give reason(s) and effect(s) due to the alteration.	無し
150	Are there any scheduled alterations for near future on responsibility allocations for the Project Implementation in NIA ?	無し
151	In case of Yes on Question-No.150, PLS give reason(s) and effect(s) expecting	無し
152	Is it correct that the present Project organization will take rolls for making progresses on the same line, belonging to SOEM, NIA ?	無し
153	Are there any plans / ideas to alternate the given rolls of the Project Team ? ( after next June )	無し
154	PLS make a copy of organization chart of the Project Team, after leaving Japanese experts from next June. ( with task allocation by team member, schedule of task by subject, fund requirement by subject )	無し
155	PLS give comments on the present potential of the Project Team for carrying out the given tasks ( with clarifying aspects, with reasons, details as possible )	無し
156	PLS give comments on budget allocation for Project implementation, referring previous situations ( Sufficient or not, how much for satisfactions )	無し
157	PLS give comments on human resources whether their capabilities could satisfy for further activities or not from the next June.	無し
158	PLS explain how to complete the lack of assistances as Japanese experts shared for last 5 years ( By assignment, task allocations by individual )	無し
159	PLS explain the procedure to be decided the budget, referring the previous conditions.	無し
160	PLS make copy of budget schedule of last 5 years ( NIA total and distinguishing the portion of the Project Team, detailed as much as possible )	無し
161	PLS explain how to obtain the budget from the next June, which Japanese expert team has assisted for last 5-years.	無し
162	If available to be allocated the budget, PLS show the budget list ( detailed as possible )	無し
163	PLS explain official assistances, if have been adapted by present, its amount, its sources, obligations if being required.	無し

No.	質 問	回 答 (裁 培)
164	PLS give comments on possibilities for obtaining the assistances as present, or more than present from those supporters ( If possible, PLS give reasons )	無し
165	PLS explain the possibility to generate the new financial sources by the Project Team or by other concerned organizations under NIA	無し
166	PLS explain how the concerned agency is managing the revenue collected from farmers as water cost	無し
167	PLS explain whether some parts of the water cost revenue can be shifted as financial source for the Project Activities.	無し
168	What are the specified measures to transfer the knowledges from officers and leading farmers to ordinary farmers ? Please explain your concrete plans.	無し
169	What are the concrete measures to link between ordinary farmers and key farmers, for transferring obtained knowledges and skills through this project ?	無し
170	Please show organization chart of extension services to farmers, if any.	無し
171	PLS give comments whether the dispatched experts are sufficient or not ( With reasons or examples )	無し
172	PLS give comments on duration of this Phase II Project	無し
173	PLS give comments on assigned subjects for this Phase II Project	無し
174	PLS give overall comments on aspects which you think or feel better to change or revise as bilateral cooperation, through this Project.	無し
175	PLS give comments whether the subjects adopted through activities are sufficient or not ( With reasons or examples )	無し
176	PLS give comments on potentials of counterparts ( Both positive & negative. With reasons or examples )	無し
177	PLS give comments on self-operation by themselves from next June ( Whether possible or not, with reasons )	無し
178	PLS give assignment record from the commencement of this phase to present, per section, reasons if the assigner was changed during last 5 years )	無し
179	PLS show concrete plan(s) to transfer the provided results to any successors	無し
180	PLS show how to utilize and develop the manuals by yourself from next year.	無し
181	PLS show how to increase well-trained nucleus farmers, with concrete target number, training methods, schedule and budget requirement, from next year. Because seems necessary to increase the farmers who can train neighbors to develop the effect.	無し
182	PLS show your prospects how to develop activities at NIA on Plan / Design Criteria after the Japanese experts' leave	無し
		無し
183	PLS show how to manage revision of manuals by yourself from next year, for the subject of Plan and Design Criteria.	無し
184	PLS show subjects to be scheduled as experimental construction with local materials, from next year, by yourselves.	無し

ORA 1 visORA 1

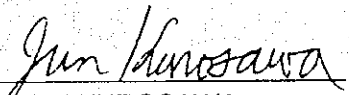
MINUTES OF UNDERSTANDING OF THE JOINT EVALUATION  
ON THE JAPANESE TECHNICAL COOPERATION  
FOR THE DIVERSIFIED CROPS IRRIGATION ENGINEERING PROJECT PHASE II  
IN REPUBLIC OF THE PHILIPPINES

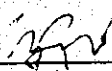
With about three months remaining until the termination of the cooperation period of "The Diversified Crops Irrigation Engineering Project Phase II" ( hereinafter referred to as "the Project" ) on May 27<sup>th</sup>, 1998, which was started on May 28<sup>th</sup>, 1993, as stated in the Record of Discussions ( hereinafter referred to as "the R/D" ), the Japanese Evaluation Team organized by Japan International Cooperation Agency ( hereinafter referred to as "JICA" ) and headed by Mr. Jun KUROSAWA visited the Republic of the Philippines in order to conduct an overall review and evaluation of the performance of the Project. In order to achieve this, a Joint Evaluation Team ( hereinafter referred to as "the Team" ) was formed consisting of the aforementioned Japanese Evaluation Team and Philippine Evaluation Team headed by Mr. Manuel L. COLLADO, OIC, Systems Management Department, NIA.

The Team conducted interviews with the Japanese experts and the Philippine counterparts assigned to the Project, had a series of discussions with the Philippine authorities concerned, made field surveys and exchanged views among themselves.


As a result, the Team agreed to forward to their respective Governments a summary on the evaluation and recommendations which are referred to in the document attached hereto.

Manila, March 11, 1998

  
Mr. JUN KUROSAWA  
Team Leader  
Japanese Evaluation Team  
Japan International Cooperation Agency  
Japan

  
Mr. MANUEL L. COLLADO  
Team Leader  
Philippine Evaluation Team  
National Irrigation Administration  
Republic of the Philippines

ATTESTED BY :

  
Mr. ORLANDO V. SORIANO  
Administrator  
National Irrigation Administration  
Republic of the Philippines

JOINT EVALUATION REPORT  
ON THE JAPANESE TECHNICAL COOPERATION  
FOR THE DIVERSIFIED CROPS IRRIGATION ENGINEERING PROJECT PHASE II  
IN REPUBLIC OF THE PHILIPPINES

===== Table of Contents =====

1. INTRODUCTION
2. MEMBERS OF THE JOINT EVALUATION TEAM
  - 2.1 Japanese Evaluation Team
  - 2.2 Philippine Evaluation Team
3. EVALUATION OF THE PROJECT
  - 3.1 Objectives of the Evaluation
  - 3.2 Evaluation Method
  - 3.3 Evaluation Items
4. RESULTS OF THE SURVEY
  - 4.1 ACCOMPLISHMENTS IN TERMS OF INPUT
    - 4.1.1 INPUTS FROM JAPAN
    - 4.1.2 INPUTS FROM PHILIPPINES
  - 4.2 PROJECT ACTIVITIES AND ACCOMPLISHMENT
    - 4.2.1 PLANNING AND DESIGN CRITERIA
    - 4.2.2 WATER MANAGEMENT
    - 4.2.3 MAINTENANCE AND REHABILITATION
    - 4.2.4 INFORMATION ANALYSIS AND MANAGEMENT
    - 4.2.5 AGRONOMY
5. RESULTS OF THE EVALUATION
  - 5.1 EFFECTIVENESS OF TARGET ACHIEVEMENT
  - 5.2 PROJECT IMPACT
    - 5.2.1 IMPACT
    - 5.2.2 EXTENT OF IMPACT
  - 5.3 EFFICIENCY
  - 5.4 RATIONALE
  - 5.5 PROSPECTS FOR SUSTAINABILITY

( To be continued )

( Continued )

===== Table of Contents =====

- 5.5.1 PROSPECTS FOR INSTITUTIONAL SUSTAINABILITY
- 5.5.2 PROSPECTS FOR FINANCIAL SUSTAINABILITY
- 5.5.3 PROSPECTS FOR PHYSICAL AND TECHNOLOGICAL SUSTAINABILITY
- 5.5.4 CONSTRAINTS FOR MANAGEMENT

6. CONCLUSIONS AND RECOMMENDATIONS

6.1 SUMMARY OF EVALUATION

6.2 RECOMMENDATIONS

ANNEXES

- ANNEX 1 Minutes of Meeting, dated on March 11, 1998
- ANNEX 2 Organization Chart of National Irrigation Administration
- ANNEX 3 A List of Major Machinery and Equipment Provided by JICA
- ANNEX 4 Proposal for the Creation of an Irrigation Engineering Center, proposes from the DCIEP II Project Manager on November 03, 1997



## 1. INTRODUCTION

Philippine agriculture contributes to the country with sharing about 20% of her Gross Domestic Products ( GDP ), about 30% of export, and about half of total employment. Also offering residential places for more than 70% of total population and they are receiving benefits from the sector directly or indirectly. While contributing to her country as so almost half of the people living in the agricultural areas are living below the poverty line and their average annual income are about half of annual income of people in the urban areas. The Government of Philippines issued her policy to introduce " Crop Diversification " by adapting " Secondary Cropping " into the rice fields, with the primary purpose to increase farmers' income.

The Government of Philippines decided to introduce 1) Crop Diversification on irrigation service area as secondary crops and 2) Contributing for increasing irrigation facilities efficiency as countermeasures against the above subject, and appointed National Irrigation Administration ( NIA ) to cope with those burdens through carrying out establishing sound required irrigation engineering technology and generating sufficient human resources for transferring those skills to be established for boosting " Secondary Cropping ".

With those backgrounds " Diversification Crops Irrigation Engineering Project ", adapting Project Type Technical Cooperation Scheme of JICA, was requested and commenced from May 1987, which was continued during the next five years and assisted in the provision of Irrigation Engineering Criteria, for diversified cropping and conducted training for technical personnel of NIA and other related aspects. Before terminating the schedule, the Government of Philippines requested succeeding cooperation from Japan to expand the previous stage results for upgrading overall irrigation originated engineering aspects through utilizing and verifying provided manuals while conducting training transfer with the manuals and to modify them as titled as " Diversified Crops Irrigation Engineering Project Phase II " in January 1992.

Due to the request for project continuation, the R/D was signed on May 28, 1993 and decided to carry out the second phase with the same period as the previous after adapting one year follow up assistance.

Hence conceptual consistency among hierarchical aims of this project are summarized as follows;

Super Goal : " To narrow the income gap between people living in urban areas and people living in rural areas " with increasing farmers' income.

Project Target : " To increase cropping intensity by means of adapting rational technologies to be generated in NIA for the aspects of water management, facility operation and maintenance and sound irrigation for secondary crop season ".

Project Purpose : " To upgrade engineering potentials of NIA staffs through conducting scheduled activities such as verification trials of the manuals and improvements if required, on-the job training and engineers' skills to raise workability of irrigation facilities by boosting utilization of newly obtained irrigation technologies at National Irrigation Systems ( NIS ) under NIA, which are developed and verified under implementation of this JICA Project Type Technical Cooperation Scheme ".

Objectives of the Study conducted here are to evaluate the Project from those views of conceptual linkage to expand the effects as scheduled in the R/D initially and to obtain lessons for future developments. Because any results of any actions of a certain project might be referred as lessons for new planning of a project as linking on continuous spiral, it might be called Project Cycle Management. This report is provided based on a concept of such project development cycle and including the results of the project evaluation conducted with both Philippine and Japanese sides, consisting of following contents.

#### 1. INTRODUCTION

Describing Project Background, Project Objectives, Objective of this report.

#### 2. MEMBERS OF THE JOINT EVALUATION TEAM

Introducing members worked for this evaluation, both of Philippine and Japanese sides.

#### 3. EVALUATION OF THE PROJECT

Explaining Objectives of evaluation, adapted method and evaluation items.

#### 4. RESULTS OF THE EVALUATION

Reporting accomplishment conditions of Project Inputs, Project activities by each field as planned initially in the R/D.

#### 5. RESULTS OF THE EVALUATION

Reporting results of Project Effectiveness, Project Impacts, Efficiency, Project Sustainability by concerned aspects and Constraints.

#### 6. CONCLUSIONS AND RECOMMENDATIONS

Describing Conclusion and Recommendations.

Annexes are prepared for being available to refer details of some aspects at the end of this report.

## 2. MEMBERS OF THE JOINT EVALUATION TEAM

### 2.1 Japanese Evaluation Team

1. **Mr. Jun KUROSAWA** : Team Leader

Deputy Director, Construction Department of Hokuriku Regional Agricultural Administration Office, Ministry of Agriculture, Forestry and Fisheries

2. **Mr. Akihiko IHARA** : Effect on Technical Cooperation

Senior Technical Official, Technical Cooperation Division, International Affairs Department, Economic Affairs Bureau, Ministry of Agriculture, Forestry and Fisheries

3. **Mr. Hirofumi TANIGUCHI** : Maintenance and Rehabilitation / Planning Design Criteria

Senior Engineer for Research and Planning, Land Improvement General Office, Department of Agriculture, Forestry and Fisheries, Okinawa General Bureau, Okinawa Development Agency

4. **Mr. Hiromu KUBO** : Information Analysis and Management / Water Management

Chief, Irrigation and Drainage Division, Construction Department, Agricultural Structure Improvement Bureau, Ministry of Agriculture, Forestry and Fisheries

5. **Mr. Hideki OKADA** : Agronomy

Chief, Administration of Technical Cooperation Section, Crop Production Division, Agricultural Production Bureau, Ministry of Agriculture, Forestry and Fisheries

6. **Mr. Yutaka INOUE** : Technical Cooperation

Staff, Agricultural Technical Cooperation Division, Agricultural Development Cooperation Department, Japan International Cooperation Agency.

7. **Mr. Seishiro SUZUKI** : Evaluation Analysis

Staff, Agricultural Technical Cooperation Division, Agricultural Development Cooperation Department, Japan International Cooperation Agency.

### 2.2 Philippine Evaluation Team

1. **Mr. Manuel L. COLLADO** : Team Leader

OIC, Systems Management Department, National Irrigation Administration, Department of Agriculture, Republic of the Philippines.

2. **Mr. Romeo E. CARBONEL** : Planning and Design Criteria / Maintenance & Rehabilitation

Manager, Design & Specifications Department, National Irrigation Administration, Department of Agriculture, Republic of the Philippines.

R

(C)

3. **Mr. Oscar A. SESE** : Planning and Design Criteria / Maintenance & Rehabilitation  
Principal Engineer A, Design & Specifications Department, National Irrigation Administration,  
Department of Agriculture, Republic of the Philippines.
4. **Mr. Rodrigo N. DE GUZMAN** : Water Management  
Manager, Communal Irrigation Development Project, National Irrigation Administration,  
Department of Agriculture, Republic of the Philippines.
5. **Mr. Rodolfo M. GUIEB** : Agronomy  
Field Operation Group, Department of Agriculture, Republic of the Philippines.
6. **Ms. Josefa G. QUILLOPE** : Agronomy  
Field Operation Group, Department of Agriculture, Republic of the Philippines.
7. **Ms. Edilberto B. Punzal, CESO V** : Agronomy  
Manager, Project Development Department, National Irrigation Administration, Department of  
Agriculture, Republic of the Philippines.
8. **Mr. Milo M. LANDICHO** : Information Analysis and Management  
Division Manager, Water Resources Utilization Division, Project Development Department, NIA,  
Republic of the Philippines.
9. **Mr. Felicisimo DAVID, JR** : Technical Cooperation  
Representative, National Economic & Development Authority, Republic of the Philippines.
10. **Mr. Arsenio B. Visario** : Technical Cooperation  
Representative, PMS, NEDA, Republic of the Philippines.
11. **Mr. Abelardo Y. ARMENTIA** : Observer  
Office-In-Charge, Corporate Planning Staff under the office of Administrator, National Irrigation  
Administration, Department of Agriculture, Republic of the Philippines.

### 3. EVALUATION OF THE PROJECT

#### 3.1 Objectives of the Evaluation

- 1) To make a comprehensive and objective evaluation of the achievements of the Project with regard to the contents of the R/D and other concerned official agreements. The period of the Project subject to evaluation is 5 years from May 28 1993 to May 27 1998 ( including scheduled activities and outputs )
- 2) To make recommendations and suggestions to the authorities of the two Governments concerned after the termination of the cooperation period of the Project.
- 3) To use the results and lessons obtained from the evaluation of the Project for cooperation planning and project implementation in similar cases in the future.

#### 3.2 Evaluation Method

- 1) The survey was conducted by the Joint Evaluation Team which was composed of the Japanese Evaluation Team and Philippine Evaluation Team.
- 2) The accomplishment of the activities of the Project was mainly evaluated according to the progress of the Tentative Schedule of Implementation ( TSI ) and the Record of Discussion.
- 3) The evaluation was carried out mainly by means of interviews and discussions with personnel concerned, and site survey.

#### 3.3 Evaluation Items

The Team, conducted an evaluation investigation with regard to the following items based on the R/D and the TSI :

##### (1) Project Input

##### 1) Japanese Input

Dispatch of experts

Acceptance of Philippine personnel for overseas training in Japan

Provision of machinery and equipment

Supplement funds to cover local costs

Dispatch of missions

Others

2) Philippine Input

Assignment of counterparts and administrative personnel

Provision of land, buildings and facilities

Allocation of recurrent expenses

Supply and replacement of equipment

Implementation of security measures

Others

- (2) Project activities and accomplishment
- (3) Impact of the Project
- (4) Management of the Project
- (5) Future plans after the termination of the cooperation period

*R*

*cu*

#### 4. RESULTS OF THE SURVEY

##### 4.1 ACCOMPLISHMENTS IN TERMS OF INPUT

##### 4.1.1 INPUTS FROM JAPAN

(1) Dispatch of experts

1) Long Term Expert Dispatching.

Accomplishment of the long term experts from Japan is as summarized in the following table.

**Accomplishment of Long Term Expert Dispatching**

Assignment	Name	Assignment Period
Team Leader	Norikazu Tsujii	May 28, '93 to May 27, '95
	Norikazu Tsujii	May 29, '95 to May 28, '96
Project Coordinator	Junji Inoue	June 15, '96 to June 14, '98
	Hidemoto Tanaka	June 11, '92 to June 10, '95
	Ryosuke Ito	May 16, '95 to March 27, '98
Planning and Design Criteria/ Information Analysis and Management	Mitsukuni Watanabe	May 28, '92 to May 31, '95
	Koji Yamada	April 11, '95 to May 27, '96
Planning and Design Criteria Information Analysis and Management	Koji Yamada	May 28, '96 to April 10, '98
	Ryosuke Moritaki	May 28, '96 to May 27, '98
Water Management	Kenji Tujishita	June 4, '92 to June 3, '95
	Shoji Katsurai	May 16, '95 to May 27, '98
Maintenance and Rehabilitation	Yoshinori Satomi	Dec. 3, '93 to Dec. 2, '95
	Hirofumi Degawa	Nov. 26, '95 to May 27, '98
Agronomy	Junji Takahashi	May 28, '93 to May 27, '96

2) Short Term Expert Dispatching.

Accomplishment of the short term experts dispatching is summarized as following table.

**Accomplishment of Short Term Experts Dispatching**

F. Year	Assignment	Name	Period
'93	Soil Physics	Yoshisuke Nakano	Dec. 6 '93 to Dec. 15, '93
	Agriculture Economics and Management	Ken Mai	Mar. 1, '93 to Mar. 26, '94
	Run-off Analysis	Yoshio Hayase	Mar. 9, '94 to Mar. 31, '94
'94	Information Analysis	Hidefumi Matsuda	Apr. 7, '94 to Apr. 16, '94
	Material Testing	Toru Kobara	Oct. 3, '94 to Oct. 21, '94
	Water Balance	Yoshihiko Ogino	Oct. 31, '94 to Nov. 13, '94
	Hydrography	Yuji Shimada	Nov. 7, '94 to Nov. 24, '94
'94	Soil Physics	Yoshihiko Hoshina	Nov. 29, '94 to Dec. 12, '94
	High Frequency Irrigation Method	Yoshisuke Nakano	Dec. 5, '94 to Dec. 15, '94
	Special Seminar Lecture	Akira Nakazawa	Mar. 12, '95 to Mar. 17, '95
	Material Testing	Toru Kobara	Oct. 9, '95 to Oct. 31, '95
	Micro-Irrigation Method	Yoshisuke Nakano	Nov. 28, '95 to Dec. 14, '96
'96	Hydrological Analysis	Yoshio Hayase	Mar. 31, '97 to Apr. 11, '97

Note : F-Year : Fiscal Year

(2) Acceptance of trainees for overseas training scheme.

Achievements of the overseas training program for the counterparts are summarized in a table as following.

**Accomplishment of Overseas Training in Japan**

Year	Training Subjects	Name	Period							
			from	1993	5	11	to	1993	7	7
'93	Agricultural Land & Water Resources Development	Mr. G.G.Bala	from	1993	5	11	to	1993	7	7
	Environmental Planning & Management in Agricultural & Observation Tour	Mr. G.Y.Pang	from	1993	9	13	to	1993	10	1
	Irrigation Project Management	Mr. A.V.Bautista	from	1993	9	26	to	1993	10	3
	Irrigation Project Management	Mr. R.A.Fernandez	from	1993	11	14	to	1993	11	23
'94	Irrigation Water Management	Mr. A.D.Eugenio	from	1994	5	8	to	1994	11	3
	Project Management and Administration	Mr. O.M.Mercado	from	1994	7	18	to	1994	8	10
	Irrigation and Drainage	Mr. J.T.Gumpal	from	1995	2	13	to	1995	11	24
	Vegetable and Crop Production	Mrs. L.L.Ringor	from	1995	2	27	to	1995	9	30
'95	Irrigation Project Management and Administration	Mr. L.S.Gonzalez	from	1995	7	23	to	1995	8	13
	Personal Computer	Mrs. C.R.Cutaran	from	1995	11	16	to	1996	3	24
	Irrigation and Drainage	Mrs. L.B.Mendoza	from	1996	2	12	to	1996	11	22
	Vegetable Crop Production	Mr. M.C.Dimapiilis	from	1996	2	26	to	1996	9	20
'96	Agricultural Land & Water Resources Development	Mr. A.A.Ginez, Jr.	from	1996	5	28	to	1996	7	21
	Irrigation Project Management and Administration	Mr. E.F.Lomigo	from	1996	8	19	to	1996	9	8
	Agricultural Extension Training for Leaders	Mr. L.T. Costa	from	1996	9	30	to	1996	10	31
	Irrigation and Drainage Technique	Mr. E.B. Aldaba	from	1996	10	7	to	1996	11	9
'97	Information Processing Technique	Mr. F.S. Ramones	from	1997	5	15	to	1997	8	29
	Maintenance & Rehabilitation	Mrs. R.E. Luz	from	1997	9	3	to	1997	9	28
'98	Irrigation Project Management and Administration	Enrique R.Reyes	from	1998	2	23	to	1997	3	12
	Agricultural and Rural Development with Environmental Conservation	Mr. R.V.Joson	from	1998	9		to	1998	11	

Note Total Number of Trainees : 20, Total manmonth : 53.03 MM as of March 6, 1998

(3) Provision of Implements

All of granted equipment are utilized and maintained properly. The amount of the procurement is shown in a list attached in ANNEXES of this report, with explanation of present conditions.

(4) Supplementary fund to cover local costs

Details of the local cost sharing by Japanese side is summarized in a table on next page.

a. Site Researching Cost :

This expenditure was disbursed for provision of the pilot plot and field research in 1993

b. Operational Assisting Cost :

The expenditure was disbursed for assisting some parts of official trips of counterparts in 1993.



c. Engineering Extension and Publicity Cost :

This cost was utilized to provide printing cost for brochures, primes, manuals and others which were distributed to concerned NIA officials and farmers.

d. Extension Effectiveness Monitoring Cost :

The expenditure was utilized for collecting basic information such as farming conditions in the pilot area and in its vicinities, which might be useful to compare with facts found as effectiveness of the project.

e. Technical Exchange Cost :

The cost was disbursed for carrying out exchanging information with similar scheme in Thailand, one is " Irrigation Engineering Center " and the another is " The Land and Water Conservation Center Project in the East of Thailand ". Results were referred to establish plans and to operational aspects in this project.

f. Cost for Special Seminar :

" Special Seminar on Effective Water Use through Improved Irrigation Management Information System " was held from March 13, 1995 to March 15, 1995, receiving 3 reporters from neighboring countries. The cost was disbursed for the seminar.

g. General Management Cost :

Records of disbursed General Management Cost from 1993 to 1997 are also summarized in the table below ( 1997 is prediction, Summarized on Fiscal Year base ).

**Record of Disbursed Amount from Japan during the Project Implementation**

Unit : (JY.1,000)

Description	Year	1993	1994	1995	1996	Sub-Total	1997
Local Cost Assist		JY.12,342	JY.19,346	JY.20,658	JY.25,726	JY.78,072	JY.4,900
General Management		JY.4,640	JY.9,686	JY.9,500	JY.5,900	JY.29,726	JY.4,900
Nucleus Engineer		JY.2,286	JY.5,776	JY.6,086	JY.5,040	JY.19,188	
Project Infrastructure				JY.5,072	JY.14,786	JY.19,858	
Site Research		JY.1,723				JY.1,723	
Operational Assisting		JY.1,666				JY.1,666	
Eng. Extension		JY.1,027				JY.1,027	
Project Efficiency		JY.1,000				JY.1,000	
Information exchange			JY.1,884			JY.1,884	
Special Seminar			JY.2,000			JY.2,000	
Grant Equipment		JY.44,588	JY.45,939	JY.24,165	JY.17,402	JY.132,094	JY.7,680
Purchase in Japan		JY.26,445	JY.18,279	JY.15,228	JY.4,559	JY.64,511	JY.7,680
Purchase in Philippine		JY.17,525	JY.25,721	JY.4,980	JY.12,050	JY.60,276	
Equipment with Expert		JY.618	JY.1,939	JY.3,957	JY.793	JY.7,307	
Grand Total		JY.56,930	JY.65,285	JY.44,823	JY.43,128	JY.210,166	JY.12,580

(5) Dispatch of missions

Several official missions have been dispatched to maintain and support the Project from the initial stage for the official discussions, including Confirmation of the request, project scheduling, detailed project implementation scheduling and others. Sequence of those cooperation process is summarized as following:

1) Preliminary Study Mission : from 1993 March 19 to 1993 March 27 ( 9 days )

(a) Member of the Mission

1. **Mr. Jiro NAKAJIMA** Team Leader  
Agricultural Structure Improvement Bureau, Ministry of Agriculture, Forestry and Fisheries
2. **Mr. Hirofumi TANIGUCHI** Upland Irrigation  
Department of Agriculture, Forestry and Fisheries, Okinawa General Bureau, Okinawa Development Agency
3. **Mr. Jyouji KANEMITSU** Water Management  
Agricultural Structure Improvement Bureau, Ministry of Agriculture, Forestry and Fisheries
4. **Mr. Akira OHTSUKA** Agronomy  
Construction Department of Tohoku Regional Agricultural Administration Office, Ministry of Agriculture, Forestry and Fisheries
5. **Mr. Eiji MATSUBARA** Technical Cooperation  
Agricultural Technical Cooperation Division, Agricultural Development Cooperation Department, Japan International Cooperation Agency

(b) Major Contents

The mission was dispatched to confirm the Request and to study the possibility to adapt a Project Type Technical Cooperation scheme for the request.

2) Implementation Discussion

The Record of Discussion was signed with NIA Administrator and Resident Representative of JICA, instead of dispatching any missions

3) Consultation Study Mission : from 1993 Oct. 19 to 1993 Oct. 28 ( 10 days )

(a) Member of the Mission

1. **Mr. Toru MASE** Team Leader  
Japanese Institute of Irrigation and Drainage
2. **Mr. Keisuke MIYANO** Agronomy / Soil  
Department of Agriculture, Forestry and Fisheries, Okinawa General Bureau, Okinawa Development Agency
3. **Mr. Yoichi YAMAUCHI** Irrigation / Water Management  
Agricultural Structure Improvement Bureau, Ministry of Agriculture, Forestry and Fisheries
4. **Mr. Hiderou YONEZAKI** Coordinator  
Agricultural Technical Cooperation Division, Agricultural Development Cooperation Department, Japan International Cooperation Agency

(b) Major Contents

The mission was dispatched to define detailed scopes of activities and adjust activity plan basing on the results stated in the TSI, referring to the Master Plan which was issued by the joint



committee.

4) Interim Evaluation Study Mission : from 1995 Nov. 1 to 1995 Nov. 10 ( 10 days )

(a) Member of the Mission

1. **Mr. Naomi KAWATA** Team Leader / Facility Maintenance  
National Federation of Land Improvement Association
2. **Mr. Izumi OBA** Planning and Design Criteria/Information Analysis/Water Management  
Agricultural Structure Improvement Bureau, Ministry of Agriculture, Forestry and Fisheries
3. **Mr. Seiichi TUCHIYA** Agronomy  
Tohkai Regional Agricultural Administration Office, Ministry of Agriculture, Forestry and Fisheries
4. **Mr. Kenichi KATO** Coordinator  
Agricultural Technical Cooperation Division, Agricultural Development Cooperation Department,  
Japan International Cooperation Agency

(b) Major Contents

The mission was dispatched to confirm the progresses and carry out interim evaluation, with taking tasks to consult project management if being some constraints or impediments against sound implementation.

#### 4.1.2 INPUTS FROM PHILIPPINES

(1) Organization and Budget of NIA

The Implementing Agency of the Philippines for DCIEP II is NIA. NIA was established in 1964 as a government agency for overall management of all activities related to planning, designing, construction and operation and maintenance of irrigation projects in the Philippines. For this purpose NIA is in charge of: 1) water resource survey and its planning 2) planning design and construction for new irrigation project 3) irrigation services fee and amortization collection from National and Communal Irrigation System. In 1974, the activities of NIA were expanded by the Presidential Decree No.552 and started to conduct flood control, drainage improvement, land reclamation, hydroelectric power generation, potable water supply, road construction and reforestation in cooperation with other governmental organizations. Originally, NIA belonged to the Department of Public Works and Highways but moved under the jurisdiction of the Department of Agriculture according to a new government policy; taking into consideration the relationship between irrigation and agriculture and, accordingly, set the scope of activities of NIA in 1992.

The organization chart of NIA is shown on Figure 4.1.2-1. The head office of NIA is located in Quezon City of Metro Manila and consists of four sectors 1) Project Development and Implementation; 2) Systems Operation and Equipment Management; 3) Finance and Management; and 4) Administrative Services. NIA has thirteen regional irrigation offices, sixty seven provincial irrigation offices and 104 irrigation system offices. These offices are headed by the Regional Managers, Provincial Irrigation Officers and Irrigation Superintendents, respectively.

The number of NIA's staff in December 1996 is shown in Table 4.1.2-1. The staff was divided into permanent staff and temporary staff for special projects. The total number of staff was 12,743 persons. The number represented a decrease of 1,863 persons from December 1995.

The budget of NIA is categorized as funds for public irrigation projects for on-going irrigation development project and funds to cover NIA's running operation costs. The budgetary requirements for 1996 are shown in Table 4.1.2-2.

### (2) Project Organization and Budget

The organization chart of DCIEP II is shown in Figure 4.1.2-2. The project, which is considered as a special project under the System Operation and Equipment Management ( SOEM ) Sector in NIA is headed by a Project Manager. There are 28 staff distributed as follows: 27 at the Irrigation Engineering Center (IEC) in NIA Central Office and 1 at the DCIEP II Field Office in Bulacan . The Project is divided into two divisions, namely, the Planning, Maintenance and Information Division and Field Operations Division. The first division has 3 sections - Planning and Design ; Maintenance and Rehabilitation ; and Information Analysis and Management while the second division has Water Management, Agronomy and Pedology ; and Diversified Cropping Promotion Project ( DCP ) , which is presently executing technical guidance and training programs at the local level. DCP activities are being conducted by local counterpart with a technical support of the JICA Experts. In order to achieve a smooth project implementation, monthly staff and annual joint coordinating committee meetings are carried out to discuss the progress of on-going activities.

The staffing chart for counterparts and main supporting staff is shown in Table 4.1.2-3. There are four counterparts at the four technical cooperation sections being benefited by technical transfer activities. Moreover, the support staff also benefits from the technical transfer activities. In 1997, DCIEP II reassigned its personnel and many of its original staff were transferred to other organizations. Particularly, both " Maintenance and Rehabilitation " and " Water Management " sections have only one staff member; consequently, the technical transfer activities are not as effective as before.

The financing for operation and maintenance is presented in Table 4.1.2-4. It can be seen that the costs of personnel services and number of staff were increasing but the portion allocated for operation was not strengthened. As a consequence, even though the training budget for 1996 was provided, the fund for 1997 was not.

### (3) Financial Provisions for Middle Level Trainees' Training Program

The annual financial provisions prepared by the Philippine Government for the training of Middle Level Trainees' Training Program are shown below. It is interesting to note that NIA followed the training sector budgetary plan in spite of the lack of budget.

1) 1993  
Planned : JY 6,000,000 (73%)  
Actual : JY 5,200,000

3) 1995  
Planned: JY 1,548,000 (20%)  
Actual: JY 1,202,000

2) 1994  
Planned: None  
Actual: None

4) 1996  
Planned: JY 3,360,000 (40%)  
Actual: JY 3,123,000

Table 4.1.2-4 Annual Disbursed Budget Record by Philippine Side

Financial Input Accomplishments by Philippines						Unit : JY.1,000	
Description	Year	1993	1994	1995	1996	1997	Sub-Total
Local Cost Assist		JY.18,020	JY.21,070	JY.28,415	JY.31,090	JY.31,522	JY.130,117
General Management		JY.18,020	JY.21,070	JY.28,415	JY.31,090	JY.31,522	JY.130,117
Personnel expenses		JY.13,515	JY.15,695	JY.21,201	JY.25,390	JY.23,642	JY.99,443
Management expenses		JY.4,505	JY.5,375	JY.7,214	JY.5,700	JY.7,880	JY.30,674
Grand Total		JY.18,020	JY.21,070	JY.28,415	JY.31,090	JY.31,522	JY.130,117

(4) Provision of land, buildings and facilities

The Philippine side has borne inputs to prepare facilities as following ;

1. Office Space in NIA

Office space, 790 m<sup>2</sup>, at 4th Floor, IEC Building, at Diliman, Quezon City

2. Experimental Plot

DCIEP II Trial Farm, Area : 3.30 ha, at Barangay Lico, San Rafael, Bulacan.

Major facilities installed there ;

1) Water Pumps, 2) Water Tank, 3) Irrigation and Drainage Canals, 4) Nursery, 5) Farm Roads, 6) Garage, 7) Farm ditch, 8) Drainage and side ditch, 9) Farm house

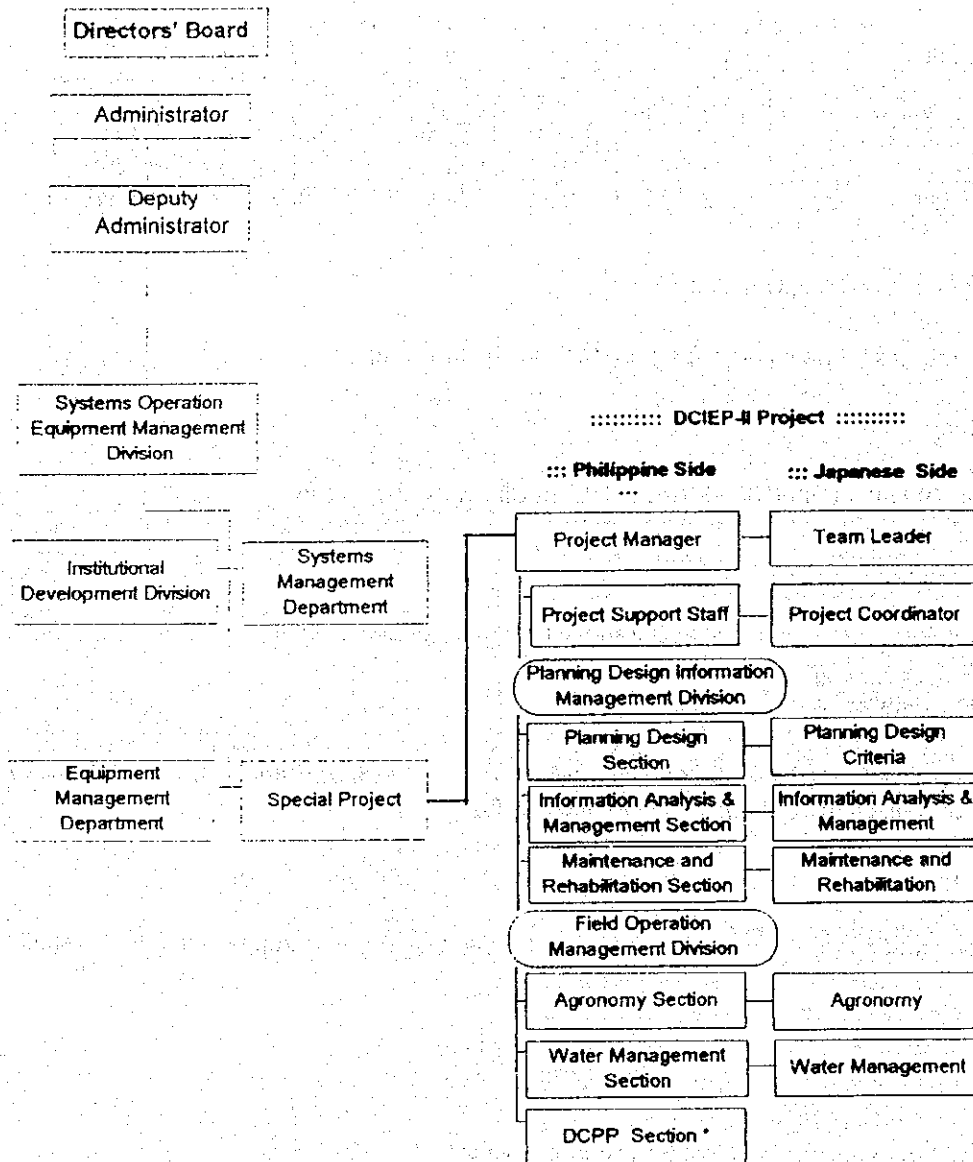
3. Laboratory

Laboratory space, 55 m<sup>2</sup>, at ground floor of DCIEP II Field Office, at Barangay Lico, San Rafael, Bulacan.

4. DCIEP II Field Office

Office space, 77 m<sup>2</sup>, at Barangay Lico, San Rafael, Bulacan.

Fig. 4.1.2-2 Organization Chart of Philippine Side Project Implementation



Note : \* DCPP is managed by NIA side.  
DCPP : Diversified Crops Promotion Project

Table 4.1.2-1 N.I.A. Personnel Positioning ( 1996 )

RESPONSIBILITY CENTER	COB - Charged			Project - Charged	TOTAL
	PERM	DAILY	SUB TOTAL	Daily	
I. NIA Proper					
CENTRAL OFFICE	684	28	712	0	712
REGION 1	391	11	402	222	624
REGION 2	320	115	435	336	771
REGION 3	524	14	538	123	661
REGION 4	552	69	621	238	859
REGION 5	264	21	285	213	498
REGION 6	449	46	495	347	842
REGION 7 & 8	291	22	313	509	822
REGION 9	189	3	192	112	304
REGION 10	291	58	349	577	926
REGION 11	431	121	552	749	1301
REGION 12	308	59	367	330	697
CAR	120	37	157	200	357
UPRIIS	717	43	760	52	812
MRIIS	606	255	861	52	913
Total	6,137	902	7,039	4,060	11,099
COTERMINOUS					
RESPONSIBILITY CENTER	REGULAR	DAILY	CONTRACTUAL	TOTAL	
II. PROJECTS					
Balog-Balog Multi-purpose Project	40	28			68
Bohol Irrigation Project	115	12			127
Communal Irrig. Development Project II	57	9			66
Comprehensive Agr. Reform Proj. - IC	34	11			45
Diversified Crops Irrig. Engg. Project	22	18			40
Earthquake Reconstruction Dev. Project	9	4			13
Irrig. Systems Improvement Project	31	157			188
Kabulnan Irrig. Area Dev. Project	94	220	220		534
Lower Agusan Development Project	3	164			167
Malitubog-Maridagao Irrig. Project	47	40	6		93
Palawan Integ. Area Dev. Proj. II-IC	14	105			119
Pamp. Delta Development Project-IC	49	105			154
Small River Irrigation Project	14	7			21
Visayas Cml. Irrig. Participatory Proj.	7	2			9
Total	536	882	226		1,644
GRAND TOTAL	6,673	5,844	226		12,743

TRAINING & DEVELOPMENT ACTIVITIES  
CENTRAL/REGIONAL/PROJECT OFFICES (1995)

PARTICULARS	NUMBER			Cost
	Course	Batch	Participants	
I. Direct Training/Development Activity				
A. Technical	42	77	2,399	P2,269,276
B. Non-Technical	20	87	3,314	906,672
C. Farmers Training	15	687	19,999	4,162,180
II. External Training/Development Activity	33		176	414,232
III. Scholarships/Grants				
A. Foreign	19		44	
B. Local	11		17	
IV. Apprenticeship Program, Senior Students From Various Colleges/Universities			47	
V. Orientation for visiting Senior Civil Engineering Students From Various Schools			601	
VI. Library Services (Central Office)				
960NIA employees and 714 researchers & visitors served				

Table 4.1.2-2 N.I.A. Annual Budget Schedule ( 1997)

<b>A. SOURCES OF FUNDS</b>		
<b>A.1 CORPORATE INCOME</b>		
1. Irrigation Service Fee .....	P572,045,297	
2. Equipment Rental .....	184,910,187	
3. Pump Amortization .....	2,748,573	
4. CIS/Equity .....	88,370,998	
5. Management Fee .....	280,000,000	
6. Others .....	129,968,241	
<b>TOTAL CORPORATE INCOME .....</b>		<b>P1,258,043,278</b>
<b>A.2 CAPITAL OUTLAY</b>		
1. Peso Counterpart for FAP's .....	497,704,000	
2. Proceeds from Foreign Loans .....	1,786,236,000	
3. Appropriation for Locally Funded Project .....	1,555,363,000	
<b>TOTAL CAPITAL OUTLAY .....</b>		<b>3,819,303,000</b>
<b>TOTAL SOURCES OF FUNDS .....</b>		<b>P5,077,346,278</b>
<b>B. EXPENDITURES</b>		
<b>B.1 Current Operating Expenditures</b>		
<b>B.1.1 Personal Services</b>		
1. Salaries .....	P404,568,552	
2. Wages .....	53,669,341	
3. Medical Allowance .....	17,808,000	
4. Meal Allowance .....	5,876,640	
5. Children's Allowance .....	6,255,392	
6. 13th month pay & P1,000 Cash Grt. ....	45,776,069	
7. Medicare .....	3,339,000	
8. State Insurance .....	2,671,200	
9. Pag-ibig .....	6,989,274	
10. GSIS .....	38,446,005	
11. Other Personal Services		
PERA / ACA .....	87,114,000	
Productivity Incentive Bonus .....	14,840,000	
Loyalty Award .....	756,750	
Overtime Services .....	6,315,439	
Subsistence Allowance .....	28,248	
Uniform Allowance .....	688,950	
Hazard Pay .....	21,211	
<b>Total for Personal Services .....</b>		<b>P695,164,071</b>
<b>B.1.2. Maintenance &amp; Other Operating Expenses</b>		
1. Contractual Services .....	P33,475,243	
2. Traveling Expenses .....	6,520,517	
3. Supplies and Materials/Parts .....	22,000,000	
4. Water, Illumination and Power .....	21,141,396	
5. Fuel and Oil for Vehicles .....	23,219,530	
6. Power for Irrigation Pump .....	20,000,000	
7. Communication Expenses .....	4,874,759	
8. RATA and Other Allowances .....	13,830,600	
9. Motorcycle Allowance .....	780,761	
10. Insurance/Registration of Buildings/Vehicles .....	10,229,016	
11. Discretionary Expenses .....	340,000	
12. Other / Contingency .....	4,500,000	
13. Auditing Services .....	42,829,861	
14. Rehabilitation & Repair of Equip. ....	55,000,000	
15. Manpower Development .....	3,000,000	
16. Irrigator's Share in ISF .....	21,335,699	
17. Collection Expenses .....	16,419,264	
18. Collection Viability Bonus .....	10,725,042	
<b>Total: Maintenance &amp; Other Operating Expenses .....</b>		<b>P310,221,708</b>
<b>Total Current Operating Expenditures (A) .....</b>		<b>P1,005,385,779</b>
<b>B.2 CAPITAL OUTLAY</b>		
1. Peso Counterpart for FAP's .....	P497,704,000	
2. Proceeds from Foreign Loans .....	1,786,236,000	
3. Appropriation for Locally Funded Project .....	3,505,363,000	
4. Acquisition of Equipment .....	1,499,962	
<b>TOTAL CAPITAL OUTLAY .....</b>		<b>P5,770,802,962</b>
<b>TOTAL EXPENDITURES .....</b>		<b>P6,776,188,741</b>
<b>C. CORPORATE OPERATING BUDGET (B)</b>		
1. Salary Increase .....	129,050,181	
2. Terminal Leave .....	40,000,000	
3. Retirement / Separation .....	60,000,000	
4. Uniform Allowance for Ladies .....	2,269,600	
<b>TOTAL CORPORATE OPERATING BUDGET (B) .....</b>		<b>P231,319,981</b>



Table 4.1.2-3 Project Related Personnel Positioning ( at Jan.31, '98 )

