

(3) UNICEF 医薬品リスト

UNICEF WAREHOUSE PRICE LIST FOR 1 APRIL 1998 TO 30 JUNE 1998

CODE GROUP 01	HOSPITAL EQUIPMENT		USD
01-008-00	BASSINET (BABY'S COT) HOME-USE TYPE	EACH	81.05
01-008-04	BASSINET (BABY'S COT) HOSPITAL TYPE	EACH	182.43
01-010-00	BED LABOUR AND DELIVERY W/TWO-PIECE MATTRESS	EACH	494.83
01-016-05	CARRIAGE, DRESSING W/O BASIN OR PAIL, KNOCK-DOWN	EACH	248.62
01-020-00	CART DRESSING/DISPENSING (WARD USE)	EACH	188.11
01-030-00	WHEELCHAIR INVALID FOLDING ADULT SIZE	EACH	218.05
01-077-00	DRUM, STERILIZING, CYLINDRICAL: 240MM DIAM	EACH	14.87
01-080-00	DRUM, STERILIZING, CYLINDRICAL: 290MM DIAM.	EACH	18.36
01-090-00	DRUM, STERILIZING, CYLINDRICAL: 340MM DIAM	EACH	20.48
01-140-00	HAMPER LINEN FOLDING WITHOUT BAGS	EACH	58.28
01-144-00	HEIGHT MEASURING INSTRUMENT TO 2 METRES	EACH	10.77
01-145-00	INFANT/CHILD HEIGHT MEASURING BOARD	EACH	272.10
01-146-00	INFANT/YOUNG CHILD LENGTH MEASURING MAT 100CM	EACH	38.91
01-171-00	LIGHT EXAMINING FLOOR STAND TYPE 110/220V	EACH	98.09
01-185-00	LIGHT EXAMINING TABLE ARTICULATED HOSP 110/220V	EACH	86.79
01-192-95	LIGHT OPERATING EMERGENCY MOBILE 220V 50/60HZ AC	EACH	2918.95
01-193-00	LIGHT OPERATING STAND-TYPE MOBILE DIA 320MM 220V	EACH	365.44
01-410-05	SCALE MOTHER/CHILD ELECTRONIC 150 KG (15 LUX) **	EACH	83.93
01-455-20	SCALE, INFANT CLINIC METRIC 15.5KG X 5G	EACH	108.16
01-455-50	SCALE WITH TROUSERS INFANT SPRING TYPE HANGING	SET	31.09
01-455-70	WEIGHT-FOR-HEIGHT CHART	EACH	28.27
01-455-71	HEALTH CARD A4 210 X 297 MM BOX OF 500	BOX	11.85
01-455-72	PLASTIC BAG FOR HEALTH CARD 110X250MM BOX/500	BOX	5.61
01-456-00	ARM CIRCUMFERENCE INSERTION TAPE PACK/50	PACK	4.64
01-500-00	STAND IRRIGATOR DOUBLE-HOOK HEIGHT ADJ TO 2.5M	EACH	45.61
01-510-01	STAND SINGLE-BOWL TYPE WITHOUT BOWL	EACH	60.47
01-515-00	STAND DOUBLE-BOWL TYPE WITH BOWLS	SET	98.08
01-515-01	STAND DOUBLE-BOWL TYPE WITHOUT BOWLS	EACH	88.58
01-540-00	STERILIZER DRESSING PRESS, 300X300 MM/14L 220 V	EACH	421.26
01-560-00	STERILIZER DRESSING PRESS 350X380 MM/39L FUEL	EACH	258.58
01-570-00	STERILIZER DRESSING PRESS CKR 300X300MM/24L FUEL	EACH	182.39
01-571-00	STERILIZER PRESSURE DOUBLE RACK 84 SYRINGES FUEL	EACH	100.00
01-571-10	STERILIZER PRESSURE SINGLE RACK 42 SYRINGES FUEL	EACH	82.52
01-571-13	PRESSURE VALVE FOR 01-571-00/10	EACH	4.39
01-571-15	GASKET, SPARE FOR 01-571-00/10	EACH	4.32
01-571-16	SAFETY VALVE FOR 01-571-00/10	EACH	3.25
01-571-17	HANDLE, SPARE FOR 01-571-00/10	EACH	3.38
01-571-18	HARD WATER PAD FOR STEAM STERILIZATION	EACH	22.40
01-571-25	STERILIZER PRESSURE DOUBLE RACK (2/5 ML) FUEL	EACH	90.40
01-571-50	STERILIZER STEAM SINGLE RACK 40 SYRINGES FUEL	EACH	88.53
01-571-52	STERILIZER STEAM SINGLE RACK 40 SYRINGES FUEL	EACH	131.85
01-575-00	DISINFECTOR INSTR. BOILING TYPE 45X16X12CM 220V	EACH	147.67
01-585-00	DISINFECTOR INSTR. BOILING TYPE 35X16X9CM 220V	EACH	161.81
01-600-00	DISINFECTOR INSTR. BOILING TYPE 410X250X100MM FUEL	EACH	27.14
01-620-00	DISINFECTOR INSTR. BOILING TYPE 320X170X100MM FUEL	EACH	17.02
01-622-00	DISINFECTOR INSTR. BOILING TYPE 430X250X180MM FUEL	EACH	54.06
01-625-00	DISINFECTOR INSTR ID 200X100X60MM ALCOHOL BURNER	EACH	30.95
01-634-80	DISINFECTOR SYRINGES/NEEDLE BOILING 220V 50HZ AC	EACH	65.63
01-648-00	STERILIZER HOT-AIR 400X330X400MM 220V	EACH	369.54
01-655-00	STERILIZER HOT-AIR 250X250X300MM 220V	EACH	299.90

UNICEF WAREHOUSE PRICE LIST FOR 1 APRIL 1998 TO 30 JUNE 1998

01-660-00	DISINFECTOR, WATER NON-PRESSURE 20LTR CAP FUEL	EACH	390.42
01-670-00	DISINFECTOR INSTRUMENT 222X82X41 MM STAINLESS	EACH	4.98
01-676-00	WATER STILL 4LTR./1GALLON/HOUR 220V	EACH	1216.88
01-680-02	STILL WATER 2LTR/0.5GAL PER HOUR FUEL-HEATED	EACH	206.70
01-690-00	STOOL REVOLVING ADJUSTABLE HEIGHT ENAMEL FINISH	EACH	69.45
01-690-05	STOOL, HYDRAULIC, ADJUSTABLE	EACH	59.64
01-700-00	STOVE KERO SINGLE BURNER PRESSURE COLLAPSIBLE	EACH	20.64
01-700-10	STOVE KEROSENE SINGLE BURNER 2 LITRES	EACH	42.38
01-800-00	STRETCHER FOLDING TYPE	EACH	94.88
01-810-04	STRETCHER COMBINATION WHEEL & CARRYING KNOCKDOWN	EACH	385.66
01-838-00	TABLE ANAESTHESIA WITH TRAYS	SET	119.87
01-838-01	TABLE ANAESTHESIA ON CASTERS WITHOUT TRAYS	EACH	104.46
01-845-00	TABLE EXAMINING FOLDING 2-SECTION WITH PAD	EACH	244.55
01-850-00	TABLE EXAMINING PORTABLE 3-SECTION WITH PAD	EACH	363.65
01-865-00	TABLE INSTRUMENT ADJUSTABLE MAYO TYPE WITH TRAY	SET	108.17
01-865-01	TABLE INSTRUMENT ADJUSTABLE MAYO TYPE W/OUT TRAY	EACH	100.47
01-870-04	TABLE INSTRUMENT ON WHEELS (THEATRE USE)	EACH	174.65
01-881-00	TABLE OPERATING UNIVERSAL FRAME TYPE	EACH	1320.76
01-884-00	TABLE UTILITY W/DRAWER & RAILS 500X400X800MM	EACH	172.95
01-890-00	TROUSERS WEIGHING SET OF 5 FOR 0145550 SCALE	SET	12.06
01-900-00	WASTE RECEPTACLE 13LTR/3 GALLON CAPACITY	EACH	13.53

CODE GROUP 02

HOSPITAL UTENSILS

USD

02-100-00	BASIN KIDNEY 475 ML (16 OZ) STAINLESS STEEL	EACH	1.66
02-100-20	BASIN KIDNEY 475ML AUTOCLAVABLE POLYPROPYLENE	EACH	1.19
02-110-00	BASIN KIDNEY 825ML (28 OZ) STAINLESS STEEL	EACH	1.86
02-110-20	BASIN KIDNEY 800ML AUTOCLAVABLE POLYPROPYLENE	EACH	1.21
02-140-00	BASIN SOLUTION DEEP APPROX. 6 LITRE S.S.	EACH	5.09
02-140-20	BASIN SOLUTION 6-LTR AUTOCLAVABLE POLYPROPYLENE	EACH	7.00
02-160-00	BASIN WASH SHALLOW 4 LITRE S.S.	EACH	4.75
02-160-20	BASIN WASH SHALLOW 4-LTR AUTOCLAVABLE POLYPROP	EACH	5.69
02-220-20	BED-PAN ADULT SIZE AUTOCLAVABLE POLYPROPYLENE	EACH	9.13
02-230-20	BED-PAN CHILD SIZE AUTOCLAVABLE POLYPROPYLENE	EACH	8.09
02-250-00	BOWL SPONGE 600ML STAINLESS STEEL	EACH	1.76
02-254-00	BOWL SPONGE 1200ML STAINLESS STEEL	EACH	2.40
02-254-20	BOWL SPONGE 1700 ML AUTOCLAVABLE POLYPROPYLENE	EACH	0.83
02-370-00	CUP SOLUTION 180ML STAINLESS STEEL	EACH	0.92
02-400-00	FUNNEL CATHETER 90ML STAINLESS STEEL	EACH	6.67
02-490-00	IRRIGATOR 1.5 LTR. STAINLESS STEEL WITH TUBING	SET	6.93
02-500-00	IRRIGATOR 1.5LTR STAINLESS STEEL	EACH	5.92
02-520-00	IRRIGATOR 1.5LTR W/TUBING-CLAMP-&-STR-CONNECTOR	KIT	8.37
02-545-00	JAR DRESSING W/COVER 0.945 LITRE STAINLESS STEEL	EACH	5.76
02-550-00	JAR DRESSING W/COVER 2.13 LITRE STAINLESS STEEL	EACH	6.91
02-560-00	JAR, NEEDLE OR OINTMENT WITH COVER & HANDLE 180ML	EACH	5.43
02-600-00	MEASURE GRADUATED W/HANDLE 500ML/1 PINT SS	EACH	2.04
02-610-00	MEASURE GRADUATED W/HANDLE 1000ML/1 QUART SS	EACH	2.44
02-638-00	PAIL WASTE WITH COVER 12 LTR SS	EACH	18.66
02-645-00	PITCHER SOLUTION W/COVER 1 LTR STAINLESS STEEL	EACH	10.11
02-645-20	PITCHER SOLUTION W/COVER 1-LTR AUTOCLAV POLYPROP	EACH	4.35
02-700-00	TRAY-INSTRUMENT, COVERED, 225X125X50 MM, SS.	EACH	5.85
02-765-00	TRAY INSTRUMENT/DRESSING W/COVER 310X195X63MM SS	EACH	7.77
02-770-00	TRAY INSTRUMENT AND CATHETER 215X75X38MM SS	EACH	15.89

UNICEF WAREHOUSE PRICE LIST FOR 1 APRIL 1998 TO 30 JUNE 1998

02-775-00	TRAY INSTRUMENT AND CATHETER 435X110X58MM SS	EACH	33.34
02-780-00	TRAY INSTRUMENT SHALLOW 480X330X19MM SS	EACH	7.70
02-785-00	TRAY INSTRUMENT SHALLOW 343X247X16MM SS	EACH	5.94
02-800-00	TUMBLER 200ML/7 OZ STAINLESS STEEL	EACH	0.98
02-800-20	TUMBLER 260ML AUTOCLAVABLE POLYPROPYLENE	EACH	0.68
02-890-01	URINAL FEMALE 900ML POLYPROPYLENE	EACH	3.68
02-905-20	URINAL MALE UPRIGHT 1/1.5 LTR AUTOCLAVABLE POLYP	EACH	4.65

CODE GROUP 03	RUBBER AND PLASTIC GOODS		USD
03-050-00	APRON UTILITY 900MM X 1M OPAQUE PLASTIC	EACH	2.26
03-100-00	ASPIRATOR NASAL INFANT SIZE 30 ML	EACH	0.52
03-150-00	BAG HOT-WATER & ICE COMBINATION 2LTR RUBBER	EACH	4.32
03-155-10	BAG POLYETHYLENE SELF-SEALING 125X200MM PKT/10	PKT	0.09
03-157-00	BASIN UTILITY 3 LTR \$ 240MM X 110MM DEEP POLYETH	EACH	0.87
03-170-00	BOTTLE FLAT 120ML PLASTIC	EACH	0.55
03-190-00	MUCUS EXTRACTOR	EACH	1.12
03-195-00	CATHETER TRACHEAL DELEE OPEN-TIP FUNNEL END 16FR	EACH	1.85
03-200-00	CATHETER URETHRAL NELATON SOLID-TIP ONE/TWO EYE	EACH	1.13
03-210-00	CATHETER URETHRAL NELATON SOLID-TIP ONE/TWO EYE	EACH	1.21
03-220-00	CATHETER URETHRAL NELATON SOLID-TIP ONE/TWO EYE	EACH	1.14
03-230-00	CATHETER URETHRAL NELATON SOLID-TIP ONE/TWO EYE	EACH	0.92
03-232-00	CATHETER URETHRAL NELATON SOLID-TIP ONE/TWO EYE	EACH	1.10
03-233-01	CATHETER URETHRAL FOLEY 12 FR DISP	EACH	0.60
03-233-02	CATHETER URETHRAL FOLEY 14 FR DISP	EACH	0.61
03-233-03	CATHETER URETHRAL FOLEY 18 FR DISP	EACH	0.57
03-234-00	CATHETER URETHRAL SET OF 12 ASSORTED	SET	12.83
03-244-00	CONNECTOR 4-IN-1 FOR 5 - 8 MM TUBING NYLON	EACH	0.38
03-245-00	CONNECTOR 3-IN-1 FOR 6 TO 8 MM TUBING NYLON	EACH	0.33
03-249-30	COVER MATTRESS FOR 910X1920MM MATTRESS VINYL	EACH	6.06
03-249-60	CUP FEEDING W/COVER & SPOUT 250ML POLYPROPYLENE	EACH	0.93
03-249-70	CUP MEDICINE 30ML POLYPROPYLENE	EACH	0.01
03-260-00	CUSHION INVALID 400MM DIAMETER	EACH	11.58
03-269-01	FINGER-COT SURGEON LARGE/SIZE ROLLED END BOX/100	BOX	1.31
03-271-01	FINGER-COT SURGEON SMALL/SIZE ROLLED END BOX/100	BOX	0.66
03-273-01	FINGER-COT SURGEONS 2-FINGER WITH APRON BAG 12	BAG	3.70
03-280-01	GLOVES SURGEON'S LATEX SIZE 6-1/2 DISPOSABLE	PAIR	0.21
03-285-01	GLOVES SURGEON'S LATEX SIZE 7 DISPOSABLE	PAIR	0.20
03-290-01	GLOVES SURGEON'S LATEX SIZE 7-1/2 DISPOSABLE	PAIR	0.21
03-295-01	GLOVES SURGEON'S LATEX SIZE 8 DISPOSABLE	PAIR	0.20
03-299-01	GLOVES, SURGICAL, SIZE 8 1/2, PAIR	PAIR	0.20
03-300-00	GLOVES EXAM. LATEX NON-STERILE, SMALL, BOX/20	BOX	0.91
03-300-01	GLOVES EXAM. LATEX NON-STERILE, MEDIUM, BOX/20	BOX	0.91
03-305-00	BAG URINE COLLECTING 2000 ML	EACH	0.29
03-310-00	HOLDER TEST-TUBE FOR 3-4 TUBES, 2-PIECE PLASTIC	EACH	0.24
03-330-00	JAR FORCEPS 114MM DEEP POLYPROPYLENE	EACH	7.52
03-335-00	JAR FORCEPS 180MM DEEP POLYPROPYLENE	EACH	7.60
03-338-00	JAR LUBRICANT 15ML PLASTIC	EACH	0.05
03-340-00	JAR OINTMENT 75 ML PLASTIC	EACH	0.26
03-342-00	JAR THERMOMETER WITH CAP POLYPROPYLENE	EACH	1.54
03-345-00	MEASURING CYLINDER 10 ML IN 0.2 ML PPR	EACH	0.55
03-346-00	MEASURE CONICAL 100 ML TFX	EACH	1.23
03-347-00	JUG MEASURING 1 LITRE	EACH	0.98

UNICEF WAREHOUSE PRICE LIST FOR 1 APRIL 1998 TO 30 JUNE 1998

03-390-00	CHAMBER-POT (COMMODE) BABY POLYETHYLENE	EACH	0.94
03-400-00	POUCH CLEAR POLYPROPYLENE 250X380 MM LONG	EACH	0.10
03-451-00	BREASTPUMP, MANUAL	EACH	8.31
03-610-20	SHEETING PLASTIC CLEAR PVC 90CM X 180CM	LGTH	1.61
03-630-00	SHIELD NIPPLE	EACH	0.80
03-640-00	SYRINGE EAR & ULCER RUBBER TIP 90ML	EACH	2.10
03-650-00	SYRINGE RECTAL INFANT RUBBER BULB HARD TIP 30ML	EACH	2.08
03-660-00	SYRINGE CONNECTOR FOR FEEDING 50ML PLASTIC	EACH	1.55
03-705-00	TUBE DUODENAL LEVIN 16FR 122CM POLYETHYLENE DISP	EACH	0.44
03-720-00	TUBE ASPIRATING/FEEDING, CH6 DISPOSABLE	EACH	0.18
03-720-10	TUBE ASPIRATING/FEEDING, CH8 DISPOSABLE	EACH	0.53
03-720-20	TUBE ASPIRATING/FEEDING, CH12, DISPOSABLE	EACH	0.42
03-730-00	TUBE NASAL FEEDING POLYETH. 380 MM 8FR INFANT	EACH	0.18
03-735-00	TUBE NASAL-FEEDING PREMATURE 5FR 380MM POLYETH.	EACH	0.19
03-750-10	TUBE NASAL FEEDING 16 FR 400 MM SOFT RUBBER	EACH	1.67
03-755-00	TUBE NASAL-FEEDING 22FR 800MM SOFT RUBBER	EACH	4.49
03-760-00	TUBE NASAL OXYGEN 10FR 400MM SOFT RUBBER	EACH	5.02
03-780-00	TUBE RECTAL ONE-EYE FUNNEL-END 20FR 500MM RUBBER	EACH	4.06
03-785-00	TUBE RECTAL ONE-EYE FUNNEL-END 22FR 500MM RUBBER	EACH	2.76
03-790-00	TUBE RECTAL ONE-EYE FUNNEL-END 24FR 500MM RUBBER	EACH	3.93
03-800-00	TUBE STOMACH FAUCHER CH.24 X 150 CM	EACH	13.21
03-820-00	TUBING MEDICAL LATEX RUBBER 150CM	LGTH	1.01
03-830-00	TUBING POLYETHYLENE 1.40MM IDX1.90MM ODX30.5M	REEL	11.15
03-850-00	TOURNIQUET LATEX RUBBER 75CM	EACH	0.70

CODE GROUP 04 GLASSWARE USD

04-100-00	ATOMIZER MEDICINAL W/EXTRA BOTTLE 15ML	EACH	30.84
04-150-00	BOTTLE DROPPING 10ML AMBER GLASS	EACH	0.38
04-252-00	DROPPING PIPETTE, UNGRADUATED	EACH	0.14
04-300-00	FEEDER-SYRINGE PREMATURE INFANT GRAD 30ML/1 OZ	EACH	3.71
04-301-00	FEEDER SYRINGE, WITH BULB RUBBER	SET	1.74
04-800-00	THERMOMETER BATH FLOATING 0 TO 50C	EACH	1.35
04-809-00	THERMOMETER CLINICAL SUB-NORMAL 30 TO 40C	EACH	1.15
04-810-50	THERMOMETER CLINICAL ORAL DUAL CELS/FAHR SCALE	EACH	0.65
04-810-52	THERMOMETER CLINIC ORAL/RECTAL CELS/FAHR	EACH	0.71
04-810-60	THERMOMETER CLINICAL RECTAL DUAL CELS/FAHR SCALE	EACH	0.67
04-900-00	UNDINE-DROPPER (EYE-IRRIGATOR) 60ML GLASS	EACH	2.00

CODE GROUP 05 SUNDRY HOSPITAL & MEDICAL ITEMS USD

05-010-50	PLASTER, SURGICAL ADHESIVE TAPE 25MM X 9.1m	REEL	0.42
05-030-00	PLASTER ADHESIVE ZINC OXIDE 75MM X 5M ROLL	ROLL	0.77
05-030-25	ELASTIC BANDAGE NON-ADHESIVE 75MMX5M	ROLL	0.46
05-050-00	FILE FOR BCG AMPOULES 6X50MM	EACH	0.02
05-120-00	BAG FOR PHYSICIAN W/ZIPPER & LINING CANVAS EMPTY	EACH	32.23
05-120-40	BAG FOR HEALTH WORKERS VINYL	EACH	14.97
05-121-00	BANDAGE GAUZE NON-STERILE 25MM X 9M	ROLL	0.07
05-121-01	BANDAGE GAUZE NON-STERILE 50MM X 9M	ROLL	0.11
05-121-02	BANDAGE GAUZE NON-STERILE 75MM X 9M	ROLL	0.16
05-126-00	BLANKET BABY 910x1270 MM 70% COTTON	EACH	1.78
05-130-00	BOX FOR MINOR SURGERY ITEMS 165X90X27MM SS	EACH	8.49

UNICEF WAREHOUSE PRICE LIST FOR 1 APRIL 1998 TO 30 JUNE 1998

05-140-00	BRUSH HAND SURGEON'S WHITE NYLON BRISTLES	EACH	0.53
05-145-00	BRUSH NURSING BOTTLE 300MM LONG	EACH	0.44
05-155-00	BURNER PRESSURE PORTABLE 500ML F. MULTIPLE FUELS	EACH	66.89
05-160-00	CASE FOR MIDWIFE KIT WITH LID EMPTY ALUMINIUM	EACH	24.21
05-161-00	CASE FOR FIRST-AID KIT 260 X 170 X 80 MM EMPTY	EACH	2.49
05-161-05	BAG FOR FIRST AID KIT (EMPTY)	EACH	4.96
05-165-00	CASE FOR 1 2-ML SYRINGE + NEEDLES EMPTY METAL	EACH	3.34
05-186-50	CLIPBOARD 230X320MM (9"X12-1/2") MASONITE	EACH	1.49
05-194-00	CONTAINER COTTON FOR BCG KIT 120ML	EACH	0.11
05-195-00	COTTON WOOL ABSORBENT NON-STERILE 100G	ROLL	0.41
05-196-00	COTTON WOOL ABSORBENT NON-STERILE 500G	ROLL	1.68
05-204-95	DRESSING FIRST AID MEDIUM SIZE	EACH	0.65
05-205-00	DRESSING, FIRST AID, STERILE, LARGE SIZE	EACH	0.65
05-210-00	DUSTER (DUST-GUN) HAND	EACH	10.33
05-214-25	ENVELOPES FOR TABLETS POLYETHYLENE PKT OF 100	PKT	0.35
05-214-50	EXTRACTOR OF TICK	EACH	1.88
05-218-75	GAUZE ABSORBENT NON-STERILE 200MM X 6M	ROLL	0.23
05-219-00	GAUZE ABSORBENT NON-STERILE 1MX100M	ROLL	12.08
05-221-00	GAUZE-PAD STERILE 12-PLY 76X76MM PKT OF 20	PKT	1.25
05-230-05	GAUZE-PAD NON-STERILE 8-PLY 100X100MM BOX/100	PKT	2.07
05-230-10	GAUZE PAD, 100X100MM, NON-WOMEN, NON-STERILE	BOX	1.91
05-230-50	GAUZE PAD, PARAFFIN, 100MM X 100MM, STERILE	BOX	3.31
05-300-00	LAMP ALCOHOL WITH SCREW CAP 60ML METAL	EACH	3.23
05-319-95	LANCET, BLOOD, DISPOSABLE, BOX OF 250	BOX	3.46
05-319-96	LANCET, BLOOD, STERILE, DISPOSABLE, BOX OF 200	BOX	2.83
05-320-00	LANCET SS (HAGEDORN NEEDLE) 75MM PKT OF 6	PKT	2.16
05-323-00	LANTERN KEROSENE PRESSURE 1.183LTR/2.5PINT 400MM	EACH	85.08
05-350-00	BOX FOR 4 SYRINGES UNMARKED ALUMINIUM	EACH	10.40
05-372-10	NETTING MOSQUITO POLYESTER 2.4M X 6M	EACH	4.88
05-373-00	NAIL CLIPPER/FILE	EACH	2.05
05-380-00	NOTEBOOK RULED WIREBOUND 50 SHEETS 130X200MM	EACH	0.26
05-381-00	NOTE PAD PLAIN 100 LEAVES A6/105X148MM	EACH	0.21
05-390-00	PINS SAFETY MEDIUM SIZE/40MM BAG OF 12	BAG	0.19
05-410-50	PLASTER OF PARIS BANDAGE BPC 3 INCHES X 3 YARDS	ROLL	0.55
05-410-55	PLASTER OF PARIS BANDAGE BPC 4 INCHES X 3 YARDS	ROLL	0.74
05-410-60	PLASTER OF PARIS BANDAGE BPC 6 INCHES X 3 YARDS	ROLL	0.87
05-440-00	RAZOR SAFETY ALL METAL 3-PIECE	EACH	4.06
05-442-00	BLADES RAZOR DOUBLE-EDGE PACK OF 5	PKT	0.23
05-442-05	REGISTER, A4, SQUARED, 40 LEAVES	EACH	1.94
05-500-00	SCALE, DIET METRIC 2KG/20G	EACH	8.07
05-504-00	SCISSORS NAIL STRAIGHT 90MM STAINLESS STEEL	EACH	1.05
05-510-04	SOAP-BOX 2-PIECE HINGED PLASTIC	EACH	0.39
05-520-00	SOAP TOILET 113G BAR WRAPPED	BAR	0.14
05-556-00	SPLINT-BOARD FULL-BODY 1.5M	EACH	7.29
05-556-25	SPLINT-BOARD LEG 750MM	EACH	4.09
05-556-50	SPLINT-BOARD ARM 500MM	EACH	3.02
05-560-00	SPLINTS CRAMER WIRE-TYPE 20X120MM/80X600MM SET 2	SET	2.13
05-565-00	SCALE SPRING BABY WITH SLING	SET	8.20
05-566-00	BIRTH WEIGH-INDICATOR WITH SLING	SET	6.10
05-570-00	SCALE SPRING BABY 5KG 25G GRADUATIONS	EACH	7.41
05-571-00	BIRTHWEIGH - INDICATOR OF BIRTH WEIGHT	EACH	5.32
05-572-00	SLING FOR USE WITH 0557000 AND 0557100	EACH	0.78
05-575-00	STAMP-PAD BLACK INKING FOR BCG KIT 40X60MM	EACH	1.16
05-576-00	STAMP RUBBER DATE FOR BCG KIT	EACH	3.18

UNICEF WAREHOUSE PRICE LIST FOR 1 APRIL 1998 TO 30 JUNE 1998

05-580-00	STERILIZATION TEST TAPE 50M ROLL	ROLL	2.85
05-581-00	INDICATOR TST CONTROL SPOT FOR STEAM STERILIZERS	PACK	6.94
05-590-00	STONE SHARPENING OIL ARKANSAS 75X25X6MM	EACH	0.89
05-600-05	TAPE UMBILICAL NON-STERILE 3MM WIDEX50M SPOOL	ROLL	1.80
05-610-00	SUTURE COTTON WHITE NON-STERILE 00 USP 91M	SPL	2.28
05-625-00	SUTURE NYLON MONOFIL STERILE 000 USP 76 CM	PKT	0.55
05-635-00	SUTURE CATGUT OBSTETRIC STERILE W/NEEDLE BOX 36	BOX	30.14
05-640-00	SUTURE SILK BLACK SZ 000 STERILE W/NEEDLE BOX 36	BOX	24.09
05-640-02	SUTURE SYNTHETIC ABSORBABLE 00 W/NEEDLE BOX/12	BOX	18.46
05-650-00	SUTURE SILK BLACK SIZE 000 USP 2X76 CM LGTH	PKT	0.92
05-650-01	SUTURE SILK BLACK SIZE 00 USP 2X76 CM LGTH	PKT	0.64
05-650-02	SUTURE SILK BLACK SIZE 1 USP 2X76 CM	PKT	0.84
05-650-04	SUTURE SILK BLACK SIZE 3 USP 2X76 CM LGTH	PKT	0.93
05-655-00	SUTURE SILK BLACK SET OF 3 SIZES	SET	2.41
05-657-00	TALCUM POWDER BP TIN OF 500G	TIN	3.46
05-660-00	TAPE UMBILICAL NON-STERILE 3MM WIDE X 100M SPOOL	EACH	2.86
05-670-00	TAPE-MEASURE 1.5M/60" VINYL-COATED FIBREGLASS	EACH	0.43
05-700-00	TOURNIQUET WEB HEAVY OLIVE DRAB 38X1066MM	EACH	3.78
05-725-00	FOIL WRAP TO PREVENT NEONATAL HEAT LOSS 122X92	EACH	0.98
05-750-00	TOWEL HUCK, 430x500MM (17x20")	EACH	0.22
05-752-05	TOWEL, TURKISH, APPROX. 500x900MM (19.5x35.5")	EACH	1.56
05-770-00	TRIANGULAR-BANDAGE CLOTH 910MM SIDES	EACH	0.35
05-800-00	URINARY-TEST-SET COMPLETE	SET	10.92
05-820-00	URINOMETER SQUIBB	EACH	3.47
05-840-05	URINARY PROTEIN TEST STRIPS	PACK	2.51
05-860-00	IODATE TEST KIT, 0-50 PPM	EACH	0.84
05-860-01	IODATE TEST KIT, 0-100 PPM	EACH	1.01
05-860-02	IODIDE TEST KIT	EACH	0.76
05-860-03	RE-CHECK SOLUTION	EACH	1.19

CODE GROUP 06 GENERAL DIAGNOSTIC INSTRUMENTS USD

06-100-00	VISION-TESTING-CHART SNELLEN ALPHABET/ILLITERATE	EACH	2.91
06-200-00	TONGUE-DEPRESSOR 165MM METAL	EACH	0.63
06-210-00	TONGUE-DEPRESSOR CHILD-SIZE BOX OF 500 WOOD	BOX	4.45
06-290-00	FLASHLIGHT WITH BATTERIES	SET	8.38
06-300-00	FLASHLIGHT PRE-FOCUSED 2-CELL RIGHT-ANGLED HEAD	EACH	6.85
06-400-00	HAMMER REFLEX TESTING TAYLOR SOLID RUBBER HEAD	EACH	1.96
06-599-00	OTOSCOPE SET WITH BATTERIES	SET	32.97
06-600-50	OTOSCOPE SET, BASIC, FOR CLINIC	SET	31.99
06-600-51	INSUFFLATOR FOR OTOSCOPE	EACH	4.29
06-614-00	OPHTHALMOSCOPE WITH BATTERIES	SET	47.99
06-615-00	OPHTHALMOSCOPE, BASIC, FOR CLINIC USE	EACH	47.50
06-670-00	PELVIMETER COLLYER EXTERNAL GRAD CMS/INCHES	EACH	5.70
06-775-00	SPECULUM EAR GRUBER SET OF 4	SET	2.95
06-800-00	SPECULUM NASAL BOSWORTH WIRE STAINLESS STEEL	EACH	0.88
06-800-05	SPECULUM, NASAL, 80MM, FRAENKEL	EACH	4.04
06-810-05	SPECULUM, NASAL, INFANT/CHILD, MARTIN	EACH	4.16
06-830-00	SPHYGMOMANOMETER ANEROID 300MM WITH CUFF	EACH	17.88
06-843-00	BULB INFLATION SPARE FOR SPHYGMOMANOMETERS	EACH	1.13
06-844-00	CUFF SPARE FOR SPHYGMOMANOMETER ADULT SIZE	EACH	6.36
06-845-00	CUFF SPARE FOR SPHYGMOMANOMETER CHILD SIZE	EACH	4.01
06-858-00	STETHOSCOPE OBSTETRIC DELEE-HILLIS ADJ HEADBAND	EACH	27.53

UNICEF WAREHOUSE PRICE LIST FOR 1 APRIL 1998 TO 30 JUNE 1998

06-860-00	STETHOSCOPE BINAURAL COMPLETE	EACH	4.07
06-865-00	STETHOSCOPE FOETAL PINARD MONAURAL	EACH	1.02
06-900-00	TAPE-MEASURE 2M/6FEET CALIBRATED CM/INCHES STEEL	EACH	2.59

CODE GROUP 07 OPERATIVE & TREATMENT INSTRUMENTS

USD

07-007-00	AIRWAY GUEDEL RUBBER INFANT SIZE 54MM	EACH	3.49
07-008-00	AIRWAY GUEDEL RUBBER CHILD SIZE 67MM	EACH	3.61
07-009-00	AIRWAY GUEDEL RUBBER SMALL ADULT SIZE 82MM	EACH	3.47
07-030-00	APPLICATOR EAR & NASAL 160MM	EACH	1.05
07-092-10	CANNULA INTRAVENOUS LUER 18G DISPOSABLE	EACH	0.55
07-092-20	CANNULA INTRAVENOUS CHILD SZ LUER 20G DISPOSABLE	EACH	0.57
07-092-25	CANNULA INTRAVENOUS INFANT SZ LUER 22G DISP	EACH	0.55
07-119-00	CLAMP TOWEL JONES 5 CM	EACH	1.23
07-120-00	CLAMP TOWEL BACKHAUS 80MM	EACH	2.29
07-121-00	CLAMP TOWEL JONES 9 CM	EACH	1.09
07-122-00	CLAMP TOWEL BACKHAUS 130MM	EACH	3.44
07-130-00	CURETTE UTERINE BLUNT SIMS 26 CM X 8 MM SS	EACH	2.64
07-143-00	CURETTE UTERINE SHARP SIMS 26 CM X 7 MM SS	EACH	2.82
07-147-00	CURETTE UTERINE SHARP SIMS 26 CM X 9 MM SS	EACH	2.72
07-152-00	CURETTE UTERINE SHARP SIMS 26 CM X 12 MM SS	EACH	3.56
07-153-00	SCOOP, UTERINE, SIMON, SHARP, 250 X 5MM	EACH	5.99
07-182-00	DILATOR UTERINE DOUBLE-ENDED PRATT SS SET OF 5	SET	15.59
07-182-10	DILATORS, UTERINE, SOLID, DOUBLE-ENDED, SET OF 8	SET	19.87
07-200-00	FORCEPS CLIP-APPLYING/REMOVING MICHEL 120 MM	EACH	2.15
07-207-00	FORCEPS SPRING-TYPE BABY 105MM SS	EACH	0.76
07-210-00	FORCEPS DRESSING SPRING-TYPE 155MM SS	EACH	1.04
07-220-00	FORCEPS DRESSING SPRING-TYPE 210 MM SS	EACH	1.85
07-222-00	FORCEPS DRESSING SPRING-TYPE 250MM SS	EACH	2.40
07-225-00	FORCEPS, DRESSING, CHERON, 250MM	EACH	7.98
07-230-00	FORCEPS EAR SPRING-TYPE ANGULAR WILDE 120 MM	EACH	1.21
07-240-00	FORCEPS HEMOSTAT CURVED KELLY 140MM SS	EACH	1.96
07-245-00	FORCEPS HEMOSTAT STRAIGHT KELLY 140MM SS	EACH	1.93
07-260-00	FORCEPS HEMOSTAT STRAIGHT KOCHER 140MM SS	EACH	2.12
07-265-00	FORCEPS HEMOSTAT STRAIGHT KOCHER(OCHSNER) 180MM	EACH	3.20
07-270-00	FORCEPS HEMOSTAT CURVED ROCHESTER-PEAN 160MM SS	EACH	2.17
07-275-00	FORCEPS HEMOSTAT STRAIGHT ROCHESTR-PEAN 160MM SS	EACH	2.19
07-280-00	FORCEPS HYSTERECTOMY CURVED PEAN 200MM SS	EACH	3.32
07-280-15	FORCEPS, ARTERY, CURVED, PEAN, 240MM	EACH	4.04
07-285-00	FORCEPS HYSTERECTOMY STRAIGHT PEAN 220MM SS	EACH	3.25
07-300-00	FORCEPS HEMOSTAT CURVED MOSQUITO HALSTEAD 125MM	EACH	1.79
07-305-00	FORCEPS HEMOSTAT STRAIGHT MOSQUITO HALSTD 125MM	EACH	1.76
07-325-00	FORCEPS OBSTET W/O TRACTION KEDARNATH DAS 340MM	EACH	23.27
07-335-00	FORCEPS, OBSTETRIC, SIMPSON-BRAUN, 360MM	EACH	116.90
07-337-00	FORCEPS OVUM GREENHALG (COREY) 240 MM	EACH	6.04
07-348-00	FORCEPS SINUS STRAIGHT LISTER 125MM SS	EACH	2.37
07-349-00	FORCEPS SPLINTER SPRING-TYPE FINE POINTS 90 MM	EACH	0.92
07-349-15	FORCEPS SPLINTER/EPILATION SPRING-TYPE 105MM	EACH	1.07
07-350-00	FORCEPS SPONGE-HOLDING STRAIGHT 200 MM	EACH	3.16
07-352-00	FORCEPS STERILIZER CHEATLE HEAVY-DUTY 270MM SS	EACH	5.71
07-354-00	FORCEPS STERILIZER CHEATLE HEAVY-DUTY 290MM SS	EACH	7.34
07-356-00	FORCEPS STERILIZER HARRISON 300MM SS	EACH	22.02
07-360-01	FORCEPS STERILIZER (UTILITY) 200 VAUGHN SS	EACH	2.20

UNICEF WAREHOUSE PRICE LIST FOR 1 APRIL 1998 TO 30 JUNE 1998

07-365-00	FORCEPS TISSUE BABCOCK 20 CM	EACH	3.46
07-366-50	FORCEPS TISSUE SPRING-TYPE 3X4TEETH RIPSTN 150MM	EACH	1.64
07-366-58	FORCEPS TISSUE SPRING-TYPE1X2 TEETH SEMKEN 125MM	EACH	0.87
07-370-00	FORCEPS TISSUE SPRING-TYPE 1X2TEETH 145MM	EACH	1.00
07-375-00	FORCEPS TISSUE SPRING-TYPE 1X2TEETH 200MM SS	EACH	1.50
07-380-00	FORCEPS TISSUE 4X5 TEETH ALLIS 150MM SS	EACH	2.67
07-390-00	FORCEPS TISSUE FENESTRATED JAW DUVAL 145MM	EACH	1.89
07-391-00	FORCEPS, TISSUE, DUVAL, 230MM	EACH	8.09
07-395-00	FORCEPS TISSUE 6X7 TEETH THOMS-ALLIS 200MM SS	EACH	3.77
07-400-00	FORCEPS UTERINE TENACULUM DUPLAY DBL-CVD 280MM	EACH	3.95
07-405-00	FORCEPS TONGUE-HOLDING RUBBER JAWS YOUNG 170MM	EACH	3.35
07-410-00	FORCEPS UTERINE-DRESSING CVD-JAWS BOZEMANN 260MM	EACH	3.64
07-415-00	FORCEPS UTERINE-ARTERY PHANEUF 215MM SS	EACH	3.40
07-424-00	FORCEPS UTERINE VULSELLUM CURVED MUSEUX 24 CM	EACH	4.25
07-429-70	HOLDER NEEDLE STRAIGHT DERF 125 MM	EACH	2.15
07-429-85	HOLDER, NEEDLE, CURVED JAWS, MAYO-HEGAR 160MM	EACH	3.09
07-435-00	HOLDER NEEDLE STRAIGHT NARROW-JAW MAYO-HGR 160MM	EACH	2.73
07-436-00	HOLDER NEEDLE STRAIGHT NARROW-JAW MAYO-HGR 180MM	EACH	2.99
07-437-00	HOLDER NEEDLE STRAIGHT BROAD-JAW MAYO-HGR 200MM	EACH	3.38
07-443-00	INFUSION-SET PAED SCALP VEIN DISPOSABLE 25G	EACH	0.11
07-444-00	INFUSION-SET PAED SCALP VEIN DISPOSABLE 21G	EACH	0.12
07-445-00	INFUSION-SET PAED SCALP VEIN STERILE/DISPOSABLE	EACH	0.12
07-450-00	KNIFE-HANDLE SURGICAL FOR MINOR SURGERY #3	EACH	1.95
07-455-00	KNIFE-HANDLE SURGICAL FOR MAJOR SURGERY #4	EACH	1.96
07-460-00	KNIFE-BLADE SURGICAL FOR MINOR SURGERY #10 PKT 5	PKT	0.37
07-460-10	SURGICAL BLADE, STERILE, SS, #10	EACH	0.10
07-461-00	KNIFE-BLADE SURGICAL FOR MINOR SURGERY #11 PKT 5	PKT	0.36
07-461-10	STERILE SURGICAL BLADE, SS, #11	EACH	0.11
07-462-00	KNIFE-BLADE SURGICAL FOR MINOR SURGERY #12 PKT 5	PKT	0.36
07-462-10	STERILE SURGICAL BLADE, SS, #12	EACH	0.11
07-463-00	KNIFE-BLADE SURGICAL FOR MINOR SURGERY #15 PKT 5	PKT	0.36
07-463-10	STERILE SURGICAL BLADE, SS, #15	EACH	0.12
07-464-00	KNIFE-BLADE SURGICAL FOR MAJOR SURGERY #21 PKT 5	PKT	0.37
07-465-10	STERILE SURGICAL BLADE, SS, #22	EACH	0.11
07-467-04	LARYNGOSCOPE WITH BATTERIES	SET	71.26
07-474-20	NEEDLE HYPO 1.0X38MM/19GX1.5" LUER DISP BOX/100	BOX	2.16
07-474-32	NEEDLE HYPO 0.80X40MM/21GX1.5" LUER DISP BOX/100	BOX	1.72
07-474-40	NEEDLE HYPO 0.70x32mm 22gx1 1/4" LUER DISP 100	BOX	1.83
07-474-45	NEEDLE HYPO 25GX5/8" LUER DISP BOX/100	BOX	2.00
07-474-52	NEEDLE HYPO 23GX1"/0.6X25MM LUER DISP BOX/100	BOX	1.71
07-479-90	NEEDLE SPINAL CHILD 0.70X38MM/22GX1-1/2" LUER	EACH	1.16
07-479-93	NEEDLE SPINAL CHILD 0.70X63MM/22GX2-1/2" LUER	EACH	6.38
07-480-00	NEEDLE SPINAL QUINCKE 1.10X89MM/19GX3-1/2" LUER	EACH	0.97
07-482-00	NEEDLE SPINAL 20GX3" (0.9X76MM) DISP	EACH	0.77
07-487-00	NEEDLE, SPINAL, 22g, 0.7 x 70/75mm, DISPOSABLE	EACH	0.77
07-488-50	NEEDLE HYPO REUSABLE 18 G X 3" LUER BOX OF 12	BOX	0.63
07-490-00	NEEDLE HYPO REUSABLE 18 G X 2" LUER BOX OF 12	BOX	0.52
07-493-00	NEEDLE HYPO REUSABLE 20 G X 1" LUER BOX OF 12	BOX	0.45
07-495-00	NEEDLE HYPO REUSABLE 20 G X 2" LUER BOX OF 12	BOX	0.59
07-505-00	NEEDLE HYPO REUSABLE 22G X 1-1/4" LUER BOX OF 12	BOX	0.37
07-507-00	NEEDLE HYPO REUSABLE 23 G X 1" LUER BOX OF 12	BOX	0.33
07-510-00	NEEDLE HYPO REUSABLE 24 G X 3/4" LUER BOX OF 12	BOX	0.53
07-512-00	NEEDLE HYPO REUSABLE 20 G X 6" LUER BOX OF 12	BOX	2.05
07-515-02	NEEDLE HYPO REUSABLE 26 G X 3/8" LUER BOX OF 12	BOX	0.36

UNICEF WAREHOUSE PRICE LIST FOR 1 APRIL 1998 TO 30 JUNE 1998

07-520-00	NEEDLE HYPO REUSABLE 20GX1-1/2" LUER BOX OF 12	BOX	0.40
07-523-00	NEEDLE HYPO LUER REUSABLE - SET OF 144 ASSORTED	SET	5.36
07-585-00	NEEDLE SUTURE 3/8CIRC TRI PT PKT OF 6 ASSTD	PKT	1.16
07-585-05	NEEDLE SUTURE 3/8 CIRCLE CUTTING ASSORTED	PKT	1.18
07-586-00	NEEDLE SUTURE ABDOMINAL, KEITH, STRAIGHT	PKT	1.23
07-586-10	NEEDLE SUTURE ABDOMINAL, KEITH, STRAIGHT	PKT	1.08
07-592-00	NEEDLE SUTURE, INTESTINAL, MURPHY, 1/2 CIRCLE	PKT	1.08
07-592-20	NEEDLE SUTURE INTEST 1/2CIRC TAP PT MURPHY #2 -6	PKT	1.02
07-592-30	NEEDLE SUTURE, INTESTINAL, MURPHY, 1/2 CIRCLE	PKT	1.04
07-593-00	NEEDLE SUTURE, SURGEONS REGULAR, 1/2 CIRCLE	PKT	1.29
07-593-02	NEEDLE SUTURE 1/2CIRC CUTTING #2 PKT OF 6	PKT	0.94
07-593-15	NEEDLE SUTURE, SURGEONS REGULAR, 3/8 CIRCLE	PKT	1.48
07-593-22	NEEDLE SUTURE, SURGEONS REGULAR, 3/8 CIRCLE	PKT	1.34
07-593-32	NEEDLE SUTURE, SURGEONS REGULAR, 3/8 CIRCLE	PKT	1.09
07-593-40	NEEDLE SUTURE, SURGEONS REGULAR 3/8 CIRCLE	PKT	1.11
07-593-45	NEEDLE SUTURE 3/8CIRC ROUND PT #12 PKT OF 6	PKT	1.25
07-593-55	NEEDLE SUTURE, UTERINE, MARTIN, 1/2 CIRCLE	PKT	1.42
07-593-70	NEEDLES SUTURE ASSORTED 6 EACH OF 5 TYPES	SET	5.64
07-597-00	PERFORATOR OBSTETRIC SMELLIE 250MM SS	EACH	16.62
07-598-00	PROBE GENERAL OPERATING FLEXIBLE WITH EYE 115MM	EACH	0.44
07-598-10	PROBE ROUND POINT & TONGUE-TIE 145 MM	EACH	0.79
07-604-99	PUMP ASPIRATING SURGICAL PORTABLE 110V	EACH	198.66
07-606-05	PUMP ASPIRATING SURGICAL PORTABLE 220V	EACH	257.12
07-606-35	SURGICAL SUCTION PUMP WITH YANKAUER SUCTION TUBE	SET	260.49
07-606-40	PUMP ASPIRATING, SURGICAL, PORTABLE, FOOT OPERATED	EACH	204.21
07-608-00	TUBE SUCTION YANKAUER	EACH	3.37
07-609-00	TUBING FOR SURGICAL ASPIRATING PUMPS 1.8M	EACH	5.28
07-675-00	RETRACTOR ABDOM 3-BLADE SELF-RETAIN BALFOUR	EACH	28.96
07-676-00	RETRACTOR ABDOM KELLY 50X65MM BLADE 260MM LNG SS	EACH	3.35
07-677-50	RETRACTORS ABDOM RICHARDSON-EASTMAN D-E SET OF 2	SET	7.13
07-678-00	RETRACTOR, ABDOMINAL, 3 BLADES, COLLIN	EACH	28.89
07-683-00	RETRACTOR VAGINAL SIMS SMALL BLADE 25X63MM SS	EACH	2.11
07-685-00	RETRACTOR VAGINAL SIMS MEDIUM BLADE 32X80MM SS	EACH	2.91
07-689-00	RETRACTOR GEN OPER LANGENBECK SMALL 11X30MM SS	EACH	3.53
07-689-40	RETRACTOR GEN OPER LANGEBECK 60 X 20 MM	EACH	4.23
07-690-00	RETRACTOR GEN OPER 4-PRONG MURPHY 200MM BLUNT SS	EACH	3.63
07-699-00	SCALPEL BELLY-BLADE 40 MM BLADE SS	EACH	0.71
07-700-00	SCISSORS BANDAGE ANGULAR LISTER 180 MM SS	EACH	2.38
07-702-00	SHEARS, PLASTER OF PARIS, STILLE, 370MM	EACH	36.06
07-704-82	SCISSORS DISSECT CURVED LIGHTDUTY BABY 125MM B/B	EACH	1.80
07-705-00	SCISSORS DISSECT CURVED MAYO 145MM B/B SS	EACH	2.01
07-706-00	SCISSORS DISSECT CURVED MAYO 170MM B/B SS	EACH	3.01
07-708-00	SCISSORS DISSECT CURVED MAYO 230MM B/B SS	EACH	2.96
07-712-00	SCISSORS DISSECT STRAIGHT MAYO 170MM B/B SS	EACH	2.53
07-712-50	SCISSORS DISSECT CURVED METZENBAUM 145 MM B/B	EACH	1.63
07-713-50	SCISSORS, DISSECTING, CURVED, B/B, 180MM	EACH	2.65
07-714-50	SCISSORS, DISSECTING, CURVED, B/B 230MM	EACH	3.16
07-715-00	SCISSORS EPISIOTOMY ANGULAR BRAUN 145MM SS	EACH	2.38
07-720-00	SCISSORS GAUZE STR 200MM SHARP/BLUNT POINTS SS	EACH	3.53
07-725-00	SCISSORS IRIS STRAIGHT 115MM FINE SHARP POINTS	EACH	1.27
07-729-80	SCISSORS SURGICAL CURVED BABY 120MM S/S SS	EACH	1.63
07-729-85	SCISSORS SURGICAL STRAIGHT BABY 120MM S/B SS	EACH	1.67
07-735-00	SCISSORS SURGICAL STRAIGHT 145MM S/B SS	EACH	1.86
07-745-00	SCISSORS SURGICAL STRAIGHT 145MM B/B SS	EACH	1.86

UNICEF WAREHOUSE PRICE LIST FOR 1 APRIL 1998 TO 30 JUNE 1998

07-746-50	SCISSORS TONSIL CURVED METZENBAUM BABY 150MM SS	EACH	1.61
07-747-00	SCISSORS UTERINE CURVED SIMS 200MM SS	EACH	2.70
07-752-00	UTERINE SOUND, MARTIN, MALLEABLE, 32cm, 1cm GRAD	EACH	1.32
07-770-00	SPECULUM VAGINAL BI-VALVE GRAVES SMALL SS	EACH	3.70
07-775-00	SPECULUM VAGINAL BI-VALVE GRAVES MEDIUM SS	EACH	4.23
07-780-00	SPECULUM VAGINAL BI-VALVE GRAVES LARGE SS	EACH	4.42
07-785-00	SPECULUM VAGINAL DOUBLE-ENDED SIMS #1 SS	EACH	2.42
07-790-00	SPECULUM VAGINAL DOUBLE-ENDED SIMS #3 SS	EACH	3.76
07-795-00	SPECULUM VAGINAL WEIGHTED AUVARD 38X75MM BLADE	EACH	14.99
07-810-00	SUTURE-CLIP MICHEL 14MM SS BOX OF 1000	BOX	30.40
07-819-00	SYRINGE ANAESTHETIC (CONTROL) 5ML LUER	EACH	25.50
07-819-02	SYRINGE HYPO 5ML SPARE FOR 0781900 LUER	EACH	2.52
07-819-05	SYRINGE HYPO 5ML LUER STERILIZABLE	EACH	0.18
07-819-10	SYRINGE ANAESTHETIC (CONTROL) 10ML LUER	EACH	13.87
07-819-12	SYRINGE HYPO 10ML SPARE FOR 0781910 LUER	EACH	1.71
07-821-00	SYRINGE BCG DISPOSABLE W/NDL 27G 3/8" CRT OF 500	BOX	27.11
07-822-05	SYRINGE HYPO 2ML LUER DISPOSABLE - BOX/100	BOX	2.98
07-822-07	SYRINGE AUTODESTRUCT 0.5ML W/O INCIN., BOX/100	BOX	8.95
07-822-08	SAFETY BOX FOR USED SYRINGES (0782207), CTN/25	CTN	16.01
07-822-15	SYRINGE HYPO 0.05ML LUER BCG AUTOCLAVABLE BOX/10	BOX	1.86
07-822-20	SYRINGE EPI LUER 0.5 ML AUTOCLAVABLE BOX/10	BOX	1.49
07-824-05	SYRINGE HYPO 5ML LUER DISPOSABLE BOX/100	BOX	3.99
07-824-10	SYRINGE HYPO LUER 10ML DISPOSABLE	EACH	0.06
07-830-00	SYRINGE IRRIGATING KRAMER 90ML METAL	EACH	21.58
07-835-00	SYRINGE HYPO 2ML LUER GLASS	EACH	0.62
07-840-00	SYRINGE HYPO 5ML LUER GLASS	EACH	0.66
07-845-00	SYRINGE HYPO 10ML LUER GLASS	EACH	0.83
07-850-00	SYRINGE HYPO 20ML LUER GLASS	EACH	0.92
07-856-70	SYRINGE HYPODERMIC 2MLx0.1ML POLYPROPYLENE LUER	EACH	0.45
07-856-72	SYRINGE HYPODERMIC 5MLx0.5ML POLYPROPYLENE LUER	EACH	0.56
07-856-74	SYRINGE HYPODERMIC 10MLx0.5ML POLYPROPYLENE LUE	EACH	0.81
07-915-00	VACUUM EXTRACTOR BIRD COMPLETE	SET	434.57

CODE GROUP 08 OXYGEN THERAPY EQUIPMENT USD

08-450-00	RESUSCITATOR NEO-NATAL HAND-OPERATED	EACH	93.17
08-450-10	TIMER RESPIRATION FOR ARI PROGRAMMES	EACH	3.43

CODE GROUP 09 LABORATORY EQUIPMENT AND SUPPLIES USD

09-020-00	ALBUMINOMETER ESBACH BOROSILICATE GLASS	EACH	3.36
09-045-15	BALANCE BEAM WITH BALANCE WEIGHT	SET	368.16
09-045-20	BALANCE BEAM SEMI-ANAL 250G SENS 2MG W/O WEIGHTS	EACH	271.78
09-045-32	BALANCE ANALYTICAL 200G/0.1 MG 110/220V 50HZ	EACH	1650.80
09-049-90	BALANCE DBL-BEAM TRIP-DAMP 2KG SENS 0.1G W/O WTS	EACH	211.05
09-100-00	BALANCE DISPENSING 100G SENS 10MG WITH WEIGHTS	EACH	71.93
09-102-20	BALANCE SPRING WITH HOOK DIAL INDICATOR 500GX5G	EACH	7.09
09-108-20	BALANCE WEIGHTS HIGH ACCURACY 10MG-100G	SET	153.03
09-108-30	BALANCE WEIGHTS MEDIUM ACCURACY 1G-1KG	SET	110.54
09-108-50	BALANCE WEIGHTS 5G TO 1KG	SET	22.23
09-108-62	BALANCE WEIGHTS STUDENT 1G TO 200G SET OF 10	SET	96.37
09-110-00	BASKET TEST-TUBE 150X150X150MM WIRE MESH	EACH	14.62

UNICEF WAREHOUSE PRICE LIST FOR 1 APRIL 1998 TO 30 JUNE 1998

09-150-00	BEAKER LAB LOW FORM W/SPOUT 50ML HRG	EACH	0.68
09-155-00	BEAKER LAB LOW FORM W/SPOUT 150ML HRG	EACH	0.75
09-160-00	BEAKER LAB LOW FORM W/SPOUT 250ML HRG	EACH	0.78
09-163-00	BEAKER LAB LOW FORM W/SPOUT 400ML HRG	EACH	1.24
09-170-00	BEAKER LAB LOW FORM W/SPOUT 1000ML HRG	EACH	2.14
09-174-25	BEAKER LOW FORM SPOUT POLYPROP 1000 ML	EACH	1.11
09-174-40	BEAKER LAB TALL FORM W/O SPOUT 100ML HRG	EACH	0.83
09-174-60	BEAKER LAB TALL FORM W/O SPOUT 600ML HRG	EACH	1.80
09-176-00	BEAKER LAB LOW FORM W/SPOUT HRG SET OF ASSTD	SET	5.59
09-180-24	BLENDER/LIQUIDIZER 220/240 V 50/60 HZ	EACH	26.06
09-181-00	BORER CORK OF 5-17MM W/EJECTOR METAL SET OF 12	SET	31.62
09-183-00	BOTTLE ASPIRATOR LAB 10 LTR POLYETHYLENE	EACH	6.61
09-190-00	BOTTLE DROPPING T.K. 60 ML GLASS	EACH	1.16
09-190-20	BOTTLE DROPPING W/PIPETTE 60ML POLYETHYLENE	EACH	0.54
09-191-00	BOTTLE DROPPING 100ML POLYETHYLENE	EACH	0.30
09-192-50	BOTTLE, PE - NARROW MOUTH 250ML, OPAQUE	EACH	0.33
09-193-00	BOTTLE NARROW-MOUTH SCREW-CAP RND 100ML POLYPROP	EACH	0.27
09-193-05	BOTTLE NARROW-MOUTH SCREW-CAP RND 250ML POLYPROP	EACH	0.40
09-193-07	BOTTLE NARROW-MOUTH SCREW-CAP RND 500ML POLYPROP	EACH	0.98
09-193-10	BOTTLE NARROW MOUTH SCREW CAP RND 1 LTR POLYPROP	EACH	0.97
09-194-00	BOTTLE, REAGENT, NARROW MOUTH, 50 ML: AMBER	EACH	0.71
09-194-50	BOTTLE REAGENT N/M 250ML AMBER GLASS/GLASS-STPR	EACH	1.57
09-195-00	BOTTLE REAGENT N/M 250ML CLEAR GLASS/GLASS-STPR	EACH	2.07
09-200-00	BOTTLE REAGENT N/M 500ML CLEAR GLASS/GLASS-STPR	EACH	2.81
09-205-00	BOTTLE REAGENT N/M 1 LTR CLEAR GLASS/GLASS-STPR	EACH	3.15
09-207-00	BOTTLES REAGENT N/M CLEAR GLASS W/STPRS SET/15	SET	38.69
09-208-00	BOTTLE N/M ROUND SCREW-CAP 50ML AMBER GLASS	EACH	0.19
09-208-10	BOTTLE W/M ROUND SCREW-CAP 50ML AMBER GLASS	EACH	0.26
09-209-86	BOTTLE MCCARTNEY N/M (BIJOU BOTTLE) 14ML GLASS	EACH	0.28
09-211-00	BOTTLE URINE SPECIMEN	EACH	0.10
09-212-00	BOTTLE WASH LAB USE 250ML POLYETHYLENE	EACH	0.96
09-216-00	BOTTLE, SQUARE, WIDE MOUTH POLYETHYLENE 1000 ML	EACH	0.74
09-220-00	BOX MICROSCOPE SLIDE FOR 25 SLIDES	EACH	2.73
09-221-00	BOX MICROSCOPE-SLIDE (EMPTY) FOR 100 SLIDES	EACH	5.45
09-225-00	BRUSH FOR LAB BEAKERS BRISTLED DIA. 75MMX400MM	EACH	2.10
09-226-00	BRUSH FOR LAB BOTTLES BRISTLED DIA. 500MMX350MM	EACH	0.67
09-229-00	BRUSH FOR LAB-CYLINDERS BRISTLED DIA. 63MMX650MM	EACH	1.15
09-230-00	BRUSH FOR LAB FLASKS BRISTLED DIA. 38MMX350MM	EACH	0.67
09-234-00	BRUSH FOR LAB PIPETTES BRISTLED TAPERED 430MM	EACH	1.34
09-235-00	BRUSH FOR LAB-TEST-TUBES BRISTLED DIA.13MMX230MM	EACH	0.52
09-236-00	BRUSH FOR LAB-TEST-TUBES BRISTLES DIA.35MMX300MM	EACH	0.54
09-237-00	BULB RUBBER 2ML (SIZE 5)	EACH	0.19
09-238-00	BULB RUBBER 4 ML	EACH	0.45
09-239-00	BURETTE W/STRAIGHT STOPCOCK 10MLX0.05ML GLASS	EACH	8.30
09-240-00	BURETTE W/STRAIGHT STOPCOCK 25MLX0.10ML GLASS	EACH	8.46
09-249-80	BURNER BUNSEN BOTTLED GAS - WITH TUBING	SET	8.46
09-249-85	BURNER BUNSEN BOTTLED GAS 13 MM DIAM TUBE	EACH	5.46
09-249-87	BURNER BUNSEN COAL GAS - WITH TUBING	SET	6.54
09-249-90	BURNER BUNSEN COAL GAS 11 MM DIAM TUBE	EACH	3.54
09-256-00	CENTRIFUGE FOR 6X15ML TUBES 220V 50/60HZ A/C	EACH	788.06
09-258-00	CENTRIFUGE 8x15ml ANGLE HEAD 220V	EACH	308.08
09-260-00	CENTRIFUGE FOR 4 15-ML TUBES HAND-OPERATED	EACH	81.30
09-260-24	CENTRIFUGE MICROHEMATOCRIT 24 TUBES 220V 50/60HZ	EACH	723.61
09-264-90	TUBE, CAPILLARY, NON-HEPARINIZED, 75MM VIAL/100	VIAL	0.68

UNICEF WAREHOUSE PRICE LIST FOR 1 APRIL 1998 TO 30 JUNE 1998

09-264-95	TUBE CAPILLARY HEPARINIZED 75MM VIAL OF 100	VIAL	1.25
09-265-00	TUBE FOR CENTRIFUGE GRADUATED 15ML	EACH	0.59
09-266-00	TUBE FOR CENTRIFUGE UNGRADUATED 15ML	EACH	0.18
09-285-00	CLAMP BURETTE FIXED POSITION	EACH	5.50
09-300-00	CLAMP TEST-TUBE STODDARD SPRING-WIRE	EACH	0.97
09-304-60	CLAMP TUBING REGULATING HOFFMAN 13 X 19 MM	EACH	1.11
09-305-00	CLAMP TUBING SHUT-OFF MOHR 57 MM LONG	EACH	0.97
09-312-00	COMPARATOR COLOUR LOVIBOND 2000W/O ACCESS	EACH	39.87
09-312-04	COMPARATOR-CELL FUSED GLASS 13.5MM LIGHT PATH	PAIR	30.58
09-312-45	COMPARATOR-TUBE INTERNAL DIA.13.5MM MARKED 10ML	EACH	3.69
09-322-00	COMPARATOR PH RANGE 1-11 TEST PAPER	EACH	3.65
09-325-30	CONTAINER, SPUTUM, FOR TRANSPORT	EACH	0.06
09-325-32	CONTAINER SPUTUM SNAP-ON LID NOT FOR TRANSPORT	EACH	0.04
09-326-00	COUNTER DIFFERENTIAL BLOOD-CELLS 9-UNITS	EACH	217.96
09-337-00	COUNTER HAND-TALLY 0-9999	EACH	8.54
09-340-01	COVER-GLASS FOR MICROSCOPE-SLIDES 22X22MM BOX100	BOX	0.34
09-350-00	CYLINDER GRADUATED 10ML	EACH	2.81
09-352-00	CYLINDER GRADUATED 25ML	EACH	1.75
09-360-00	CYLINDER, GRADUATED 100ML	EACH	2.40
09-362-00	CYLINDER, GRADUATED 250ML	EACH	4.29
09-365-00	CYLINDER, GRADUATED 500ML	EACH	6.45
09-370-00	CYLINDER, GRADUATED 1000ML	EACH	13.11
09-371-00	CYLINDER GRADUATED LAB 50ML PPR	EACH	1.10
09-372-00	CYLINDER GRADUATED LAB 100ML PPR	EACH	0.62
09-374-00	CYLINDER GRADUATED LAB 500ML PPR	EACH	2.86
09-374-10	CYLINDER GRADUATED LAB 1000ML PPR	EACH	8.19
09-374-30	CYLINDER GRADUATED LAB W/STOPPER 100ML HRG	SACH	5.09
09-374-60	DESICCATOR PLAIN SCHEIBLER ID 150 X 150 MM	EACH	52.11
09-374-65	DISH CRYSTALLIZING W/SPOUT 250-300ML 100MMX50MM	EACH	1.31
09-375-00	DISH CULTURE PETRI DIA 100MMX15MM HRG	EACH	0.52
09-376-00	DISH STAINING GLASS FOR 30 SLIDES	EACH	23.27
09-378-00	FLASK BOILING FLAT BOTTOM 500 ML HRG	EACH	2.04
09-379-00	FLASK BOILING FLAT BOTTOM 1000 ML HRG	EACH	3.14
09-379-60	FLASK DISTILLATION 125 ML HRG	EACH	3.89
09-381-00	FLASK, ERLLENMEYER, N/M, 100 ML HRG	EACH	0.91
09-387-00	FLASK ERLLENMEYER (CONICAL) N/M 250 ML HRG	EACH	0.90
09-390-00	FLASK ERLLENMEYER (CONICAL) N/M 500 ML HRG	EACH	1.25
09-395-00	FLASK ERLLENMEYER (CONICAL) N/M 1000 ML HRG	EACH	5.13
09-399-15	FLASK VOLUMETRIC LAB 100ML HRG	EACH	3.12
09-399-20	FLASK VOLUMETRIC LAB 250ML HRG	EACH	3.92
09-399-25	FLASK VOLUMETRIC LAB 500ML HRG	EACH	8.44
09-400-00	FORCEPS COVER-GLASS KUEHNE 100MM	EACH	1.51
09-405-00	FORCEPS MICROSCOPE-SLIDE KIRKBRIDE 125MM	EACH	1.56
09-450-00	FUNNEL LAB PLAIN DIAM 65MM/60ML HRG	EACH	1.35
09-456-00	FUNNEL LAB RIBBED DIAM 115MM/250ML HRG	EACH	4.19
09-457-35	FUNNEL LAB RIBBED DIAM 160MM POLYETHYLENE	EACH	1.81
09-458-00	FUNNEL LAB RIBBED DIAM 65MM POLYPROPYLENE	EACH	0.42
09-460-00	FUNNEL LAB RIBBED DIAM 100MM POLYPROPYLENE	EACH	0.71
09-460-50	FUNNEL LAB POURING DIAM 200MM POLYETHYLENE	EACH	1.10
09-464-00	GAUZE WIRE LABORATORY 150 X 150 MM	EACH	0.69
09-480-00	HEMACYTOMETER-SET COMPLETE	SET	9.74
09-482-00	COUNTING-CHAMBER LEVY FOR HEMACYTOMETER 0948000	EACH	7.69
09-483-00	COVER-GLASS 20X26MM FOR HEMACYTOMETER BOX OF 12	BOX	1.67
09-485-00	PIPETTE RED-BLOOD-CELL THOMA FOR HEMACYTOMETER	EACH	1.34

UNICEF WAREHOUSE PRICE LIST FOR 1 APRIL 1998 TO 30 JUNE 1998

09-486-00	PIPETTE WHITE-BLOOD-CELL THOMA FOR HEMACYTOMETER	EACH	1.34
09-500-00	HEMOGLOBINOMETER-SET SAHLI-TYPE COMPLETE	SET	5.49
09-505-00	PIPETTE SAHLI 0.02ML FOR HEMOGLOBINOMETER	EACH	0.95
09-510-00	MEASURING TUBE FOR HEMOGLOBINOMETER	EACH	0.46
09-520-00	HOLDER NEEDLE LAB 125MM CRM	EACH	2.58
09-524-15	OVEN UNIVERSAL, LABORATORY 220V	EACH	442.65
09-525-00	HYDROMETER SPECIFIC GRAVITY 1.000 - 1.225	EACH	4.88
09-530-00	JAR STAINING VERTICAL COPLIN FOR 10 SLIDES	EACH	3.17
09-551-05	LAMP ALCOHOL W/SPARE WICK 65ML GLASS	EACH	3.25
09-552-04	LITMUS-INDICATOR-PAPER VIAL OF 100 STRIPS BLUE	VIAL	1.07
09-552-06	LITMUS-INDICATOR-PAPER VIAL OF 100 STRIPS RED	VIAL	0.99
09-560-00	MORTAR-AND-PESTLE DIAM 100MM/100ML GLASS	EACH	8.50
09-571-04	MICROSCOPE BINOCULAR INCLINED W/O ILLUM (PZO)	EACH	487.07
09-576-11	MICROSCOPE LAMP BULB FOR 0961100	EACH	6.60
09-600-00	MICROSCOPE MONOCULAR W/OIL-1MM OBJ W/O ILL-PZO	EACH	366.51
09-601-03	MICROSCOPE MONOCULAR STUDENT W/O ILLUMINATOR	EACH	177.52
09-609-00	ILLUMINATOR FOR MICROSCOPE SIMPLE 220V	EACH	28.09
09-611-00	MICROSCOPE ILLUMINATOR FOR MICROSCOPE 0957104	EACH	285.61
09-630-00	PAPER FILTER QUALITATIVE 100MM PKT OF 100	PKT	0.82
09-635-00	PAPER FILTER QUALITATIVE 150MM PKT OF 100	PKT	2.13
09-637-00	PAPER FILTER QUALITATIVE 250MM PKT OF 100	PKT	8.32
09-640-00	PAPER LENS 100X150MM PKT OF 50 SHEETS	PKT	0.42
09-650-00	PENCIL WAX/CHINAGRAPH FOR LAB USE RED	EACH	0.24
09-651-00	PENCIL WAX/CHINAGRAPH FOR LAB USE BLUE	EACH	0.39
09-653-00	PIPETTE SEROLOGICAL 0.1MLX0.001ML HRG	EACH	0.61
09-654-00	PIPETTE SEROLOGICAL 0.2MLX0.01ML HRG	EACH	0.67
09-661-00	PIPETTE SEROLOGICAL 1.0MLX0.01ML HRG	EACH	0.45
09-662-00	PIPETTE SEROLOGICAL 2.0MLX0.10ML HRG	EACH	0.45
09-663-00	PIPETTE SEROLOGICAL 2.0MLX0.02ML HRG	EACH	0.43
09-665-00	PIPETTE SEROLOGICAL 5.0MLX0.10ML HRG	EACH	0.44
09-666-00	PIPETTE SEROLOGICAL 5.0MLX0.05ML HRG	EACH	0.41
09-670-00	PIPETTE SEROLOGICAL 10.0MLX0.10ML HRG	EACH	0.50
09-672-00	PIPETTE SEROLOGICAL HRG SET OF 12 ASSORTED	SET	5.50
09-674-00	PIPETTE MEASURING MOHR 10MLX0.1ML	EACH	0.46
09-675-00	PIPETTE MEASURING MOHR 25MLX0.1ML HRG	EACH	1.05
09-676-00	PIPETTE VOLUMETRIC 1ML HRG	EACH	0.95
09-677-00	PIPETTE VOLUMETRIC 2ML HRG	EACH	0.90
09-678-00	PIPETTE VOLUMETRIC 3ML HRG	EACH	0.94
09-679-05	PIPETTE VOLUMETRIC 5ML HRG	EACH	0.95
09-679-10	PIPETTE VOLUMETRIC 10ML HRG	EACH	0.97
09-679-15	PIPETTE VOLUMETRIC 20ML HRG	EACH	1.12
09-679-20	PIPETTE VOLUMETRIC 25ML HRG	EACH	0.94
09-679-25	PIPETTE VOLUMETRIC HRG SET OF 13 ASSORTED	SET	12.20
09-680-00	PIPETTE BLOOD-SEDIMENTATION WESTERGREN W/O RACK	EACH	0.33
09-684-00	RACK BLOOD-SEDIMENTATION WESTERGREN 6-UNIT	EACH	35.21
09-685-00	RACK BLOOD-SEDIMENTATION WESTERGREN 10-UNIT	EACH	49.11
09-685-15	RACK STAINING COLLAPSIBLE FOR MICROSCOPE-SLIDES	EACH	37.02
09-685-18	RACK TEST-TUBE FOR 6 TUBES PLASTIC OR WOOD	EACH	10.17
09-685-20	RACK TEST-TUBE FOR 12 TUBES WOOD	EACH	2.54
09-685-25	RACK TEST-TUBE FOR 30 KAHN TUBES PLASTICZD METAL	EACH	10.73
09-685-30	RACK TEST-TUBE FOR 40 TUBES GALVANIZED WIRE	EACH	13.46
09-686-00	RODS STIRRING GLASS ASSORTED	PKT	4.20
09-688-00	SCRIBER GLASS-MARKING TUNGSTEN CARBIDE	EACH	3.33
09-690-00	SLIDE MICROSCOPE PLAIN 25X75MM BOX 72 CLINICAL	BOX	1.16

UNICEF WAREHOUSE PRICE LIST FOR 1 APRIL 1998 TO 30 JUNE 1998

09-698-00	SPATULA LAB DOUBLE-BLADE/SPOON-END 210MM SS	EACH	1.28
09-699-00	SPATULA LAB SINGLE-BLADE 75MM SS	EACH	0.75
09-699-10	SPATULA LAB SINGLE-BLADE 150MM SS	EACH	3.55
09-722-05	STOPPER CORK XXX 27-50MM TOP DIA BAG/100 ASSTD	BAG	16.98
09-767-00	SUPPORT-STAND LABORATORY BURETTE WITHOUT CLAMP	EACH	17.62
09-789-90	TEST-TUBE WITH RIM 100X13MM HRG	EACH	0.06
09-789-95	TEST-TUBE WITH RIM 150X16MM HRG	EACH	0.12
09-790-00	TEST-TUBE WITH RIM 150X25MM SODA GLASS	EACH	0.12
09-793-00	TEST-TUBE W/O RIM (KAHN) 75X12MM HRG	EACH	0.05
09-797-00	TEST-TUBE W/O RIM (WASSERMAN) 100X13MM HRG	EACH	0.10
09-800-00	TEST-TUBE W/O RIM (CULTURE) 150X16MM HRG	EACH	0.12
09-830-00	THERMOMETER LAB -10 TO +110C X 1 DEG	EACH	1.08
09-834-00	TIMER 60MINUTES X 1 MINUTE SPRING-WOUND	EACH	3.37
09-834-05	TIMER STOPCLOCK 60 MINUTES X 1 SECOND SPRING-WND	EACH	30.79
09-845-00	TRIANGLE PIPESTEM 50MM SIDES	EACH	0.18
09-853-00	TRIPOD LAB CIRCULAR W/2 RINGS \$ 150MMX225MM IRON	EACH	10.22
09-865-00	TUBE HEMATOCRIT WINEROBE FLINT GLASS	EACH	0.51
09-871-50	TUBING LATEX RUBBER ID 3.2MMX1.6MM WALL X 1M	LGTH	0.38
09-871-90	TUBING NEOPRENE ID 6.3MMX1.5MM WALL X 1M	LGTH	3.86
09-871-96	TUBING NEOPRENE ID 8.0MMX2.0MM WALL X 1M	LGTH	3.00
09-875-00	TUBING GLASS ASSORTED	BOX	2.06
09-888-00	WATCH-GLASS LAB USE DIAM 75MM	EACH	0.64

CODE GROUP 10 CHEMICALS AND REAGENTS

USD

10-080-01	AMMONIUM-OXALATE REAGENT GRADE 250G	BOTL	2.67
10-125-00	BENEDICT'S-REAGENT QUALITATIVE DRY COMPONENTS	KIT	7.53
10-150-00	OIL CEDAR-WOOD FOR MICROSCOPY 25ML	BOTL	1.37
10-156-00	CHLORAMINE T	BOTL	13.07
10-165-00	CRYSTAL-VIOLET BIOLOGICAL STAIN POWDER 25G	BOTL	2.37
10-175-05	CUPRIC-SULFATE REAGENT GRADE SMALL CRYSTALS 100G	BOTL	1.15
10-230-00	FUCHSIN BASIC BIOLOGICAL STAIN POWDER BOTL 25G	BOTL	1.46
10-235-00	GIEMSA-STAIN TYPE AZURE A POWDER 10G	BOTL	2.39
10-243-00	GLUCOSE MONOHYDRATED PHARMACEUTICAL GRADE 500G	BOTL	1.78
10-245-00	GLYCEROL (GLYCERIN) SP GRAV 1.26 PHARMA GR 500ML	BOTL	3.69
10-440-60	MAGNESIUM-SULFATE (EPSOM SALTS) HYDRATED PHG 1KG	BOTL	2.46
10-540-00	METHYLENE-BLUE BIOLOGICAL STAIN POWDER 25G	BOTL	2.84
10-675-00	POTASSIUM-IODIDE REAGENT GRADE 500G	BOTL	15.73
10-700-01	SAFRANIN BIOLOGICAL STAIN POWDER BOTTLE OF 25G	BOTL	4.51
10-737-90	SODIUM-BICARBONATE (BAKING SODA) PHARMA GR 100G	BOTL	1.12
10-738-00	SODIUM-BICARBONATE (BAKING-SODA) PHARMA GR 1KG	BOTL	2.80
10-740-00	SODIUM-CARBONATE ANHYDROUS(SOLVAY-SODA)REAG 500G	BOTL	2.10
10-750-05	SODIUM-CHLORIDE REAGENT GRADE 500G	BOTL	2.93
10-760-00	SODIUM(TRISODIUM)-CITRATE PHARMA GRADE 500G	BOTL	3.17
10-850-00	SODIUM-OXALATE REAGENT GRADE 100G	BOTL	3.04
10-960-40	ZINC (METAL) COML GRADE GRANULES 500G	BOTL	6.79

CODE GROUP 11 REFRIGERATION & COLD CHAIN EQUIPMENT

USD

11-216-11	WICK FOR REFRIGERATOR 1121610	EACH	2.26
11-216-12	BURNER FOR REFRIGERATOR 1121610	EACH	26.47
11-216-13	GLASS LAMP FOR REFRIGERATOR 1121610	EACH	10.73

UNICEF WAREHOUSE PRICE LIST FOR 1 APRIL 1998 TO 30 JUNE 1998

11-216-14	WICK CLEANER FOR REFRIGERATOR 1121610	EACH	0.73
11-216-15	FLUE BRUSH FOR REFRIGERATOR 1121610	EACH	11.10
11-216-17	FLAME SPREADER NO. 32 FOR REFRIGERATOR 1121610	EACH	1.94
11-216-18	ELEC HEATER 240V FOR REFRIG 1121610 S2325/PEV1ST	EACH	20.11
11-216-20	ELEC HEATER 220V FOR REFRIG 1121610 V240 K/E	EACH	11.35
11-510-21	GAS THERMOSTAT FOR 11-510-20 MODEL S2323/2WV1	EACH	26.54
11-510-22	ELEC HEATER 220V FOR 11-510-20 MODEL S2323/2WV1	EACH	18.08
11-510-23	THERMOCOUPLE FOR 11-510-20 MODEL S2323/2WV1	EACH	7.68
11-510-24	SAFETY VALVE FOR 1151020 (S2323/2WV1 OR V240GE)	EACH	14.41
11-510-25	BURNER JET FOR 1151020 (S2323/2WV1 OR V 240 GE)	EACH	4.19
11-510-26	GAS THERMOSTAT FOR 11-510-20 MODEL V 240 GE.	EACH	34.04
11-510-27	ELEC HEATER 220V FOR 11-510-20 MODEL V 240 GE.	EACH	14.28
11-510-28	THERMOCOUPLE FOR 11-510-20 MODEL V 240 GE.	EACH	7.76
11-512-15	CHEST FREEZER 220V STORAGE CAPACITY 120-150L	EACH	336.69
11-537-40	CAPACITOR FOR 11-537-41	EACH	12.99
11-537-41	COMPRESSOR FOR REFRIG/FRZR 11-530-20/11-516-20	EACH	93.06
11-537-50	STARTING DEVICE FOR 11-537-41	EACH	5.00
11-537-60	THERMOSTAT (FREEZER) FOR REFRIGERATOR 11-530-20	EACH	11.64
11-537-61	THERMOSTAT (REFR.) FOR REFRIGERATOR 11-530-20	EACH	7.36
11-537-65	THERMOSTAT FOR ICEPACK FREEZER TFW 791	EACH	18.66
11-555-00	POLIO INVESTIGATION KIT	KIT	2.39
11-570-90	ICELINED REFRIGERATOR 220V STORAGE CAP 70-90L	EACH	485.67
11-830-05	THERMOMETER VACCINE-STORAGE	EACH	1.47
11-830-17	VACCINE COLD CHAIN MONITOR CARDS, FRENCH	EACH	3.45
11-830-18	1183017 COLD CHAIN MONITOR CARDS, ENGLISH	EACH	3.12
11-850-20	LONG RANGE COLD BOX STORAGE CAPACITY 20-27L	EACH	199.08
11-850-40	VACCINE CARRIER STORAGE CAPACITY 1.5-3L	EACH	15.31
11-850-54	ICE-PACK 0.6 LT FOR 1185051 & 1185065, SET/24	SET	15.25
11-850-85	ICE-PACK 0.4 LT FOR VACCINE CARRIERS 1185005/-75	EACH	0.45
11-900-00	BASIC TOOL KIT: R12 & R134A REFRIG SYSTEMS 220V	KIT	1706.25
11-900-12	SUPPLEMENTARY TOOLS FOR R12 SYSTEMS ONLY	KIT	336.08
11-901-34	SUPPLEMENTARY TOOLS FOR R 134A SYSTEMS ONLY	KIT	334.39

CODE GROUP 12 DENTAL EQUIPMENT AND SUPPLIES USD

12-340-10	SCALER SICKLE DENTAL	EACH	3.59
12-343-95	CHISEL DENTAL DOUBLE-ENDED	EACH	10.46
12-400-15	SPATULA, MULTI-PURPOSE, WOODSON	EACH	10.16
12-420-00	ELEVATOR DENTAL ROOT SELDIN #4-L SS	EACH	2.78
12-425-00	ELEVATOR DENTAL ROOT SELDIN #4-R SS	EACH	2.49
12-430-00	ELEVATOR DENTAL ROOT APICAL FRAGMENTS SSW #301	EACH	2.86
12-435-00	ELEVATOR DENTAL ROOT APICAL FRAGMENTS SSW #302	EACH	2.97
12-466-00	EXCAVATOR DOUBLE-ENDED DISCOID	EACH	1.36
12-475-00	PROBE PERIODONTAL FOR CPITN	EACH	1.07
12-490-10	EXPLORER DENTAL STRAIGHT	EACH	1.02
12-499-00	FORCEPS DENTAL ROOT-SPLINTER SS SET OF 2	SET	6.79
12-500-05	FORCEPS TOOTH EXTRACTING UNIVERSAL	SET	13.37
12-670-00	MIRROR MOUTH-EXAMINING PLANE GLASS W/O HANDLE	EACH	2.10
12-685-00	HANDLE FOR MOUTH-EXAMINING MIRROR, SS	EACH	0.66
12-687-00	MORTAR AND PESTLE FOR AMALGAM DIAM 36 MM	EACH	11.07
12-690-00	PLIERS/TWEEZERS DENTAL COTTON & DRESSING #311 SS	EACH	1.11
12-692-00	PLIERS/TWEEZERS DENTAL BAYONETTE FORM SS	EACH	1.02
12-710-00	POT MEDICAMENT DENTAL CLEAR	EACH	1.83

UNICEF WAREHOUSE PRICE LIST FOR 1 APRIL 1998 TO 30 JUNE 1998

12-713-00	PLUGGER AMALGAM DOUBLE-ENDED	EACH	10.57
12-730-00	RETAINER DENTAL MATRIX TOFFLEMIRE SS	EACH	7.35
12-731-00	BAND FOR DENTAL MATRIX RETAINER - 48 ASSORTED	PKT	7.13
12-800-10	SPATULA DOUBLE ENDED	EACH	1.23
12-820-00	SYRINGE AIR DENTAL WITH RUBBER BULB #22	EACH	7.83
12-841-00	NEEDLE HYPO DENTAL CARTRIDGE 0.40X40MM BOX OF 12	BOX	4.50

CODE GROUP 13 DENTAL EXPENDABLES USD

13-212-00	BUR TGSTN.CARBIDE ROUND FOR HIGH SPEED HANDPIECE	EACH	1.20
13-270-00	CEMENT DENTAL ZINC-OXIDE-EUGENOL (2OE) PKT 50G	PKT	5.55
13-300-00	CLOTH SQUEEZE DENTAL BOX OF 100	BOX	6.42
13-375-00	GAUZE-PAD STERILE 50 X 50 MM	EACH	0.10
13-380-00	KEROSENE DEODORIZED	BOTL	7.10
13-400-00	LUBRICANT FOR DENTAL HANDPIECES METAL TUBE 14G	TUBE	11.20
13-460-00	NEEDLE SUTURE 5/8 CIRCLE DENTAL PKT OF 12	PKT	4.22
13-515-00	PAPER ARTICULATING DENTAL THIN BOX OF 144 SHEETS	BOX	3.27
13-800-10	SUTURE RESORBABLE DENTAL	PKT	1.18
13-808-00	WEDGES WOODEN INTERDENTAL	BOX	4.55
13-810-00	WIRE SOFT DENTAL SS	LGTH	3.07

CODE GROUP 15 DRUGS & DIETARY SUPPLEMENTS USD

15-010-00	EPINEPHRINE HCL INJ 1MG/ML 10 X 1ML	BOX	0.78
15-040-00	ALUMINIUM HYDROXIDE TAB 500MG PACK/1000	PACK	6.66
15-040-02	ALUMINIUM HYDROXIDE ORAL SUSP 320MG/5ML 500ML	BOTL	1.65
15-041-00	ALUMINIUM HYDROXIDE TAB 500MG 100	PACK	0.96
15-050-10	AMINOPHYLLINE TABLET 200MG, PACK OF 100	PACK	0.84
15-050-15	AMINOPHYLLINE INJ 25MG/ML 10ML 10 X 10ML	BOX	1.11
15-050-25	AMINOPHYLLINE TABLET 100 MG, PACK OF 1000	PACK	4.28
15-050-40	AMOXICILLIN TABLET. 250MG 1000	PACK	20.30
15-050-45	AMOXICILLIN PWDR/ORAL SUSP. 125MG/5ML, 60ML	BOTL	0.26
15-050-46	AMOXICILLIN POWDER FOR ORAL SUSPENSION 125MG/5ML	EACH	0.51
15-050-48	AMOXICILLIN TABLET/CAPSULE 500MG PACK OF 100	PACK	5.36
15-050-97	AMPICILLIN PDR. FOR INJ. WITH DILUENT	SET	11.49
15-050-98	AMPICILLIN PWDR FOR INJ 500MG BOX OF 25 VIALS	BOX	4.62
15-051-20	NEOMYCIN & BACITRACIN OINT/CREAM 5MG& 500IU 20G	TUBE	0.37
15-060-00	ACETYLSALICYLIC ACID TAB 100MG 100	PACK	0.44
15-060-02	ACETYLSALICYLIC ACID TAB 300MG 1000	PACK	3.75
15-060-03	ACETYLSALICYLIC ACID TAB 300MG 100	PACK	0.53
15-060-05	ACETYLSALICYLIC ACID TAB 500MG 100	PACK	0.60
15-100-00	TETRACYCLINE HCL OPH OINT 1% 5G	TUBE	0.16
15-105-00	IODIZED OIL CAPSULES 200MG - PACK/1500	PACK	233.53
15-110-00	ASCORBIC ACID TAB 50MG 100	PACK	0.55
15-115-00	BECLMETHASONE ORAL INH. 0.05MG/DOSE	EACH	1.58
15-140-05	ATROPINE TAB 1MG 1000	PACK	3.81
15-140-10	ATROPINE INJ 1MG/ML 10 X 1ML	BOX	0.65
15-140-20	ATROPINE TAB 1MG 100	PACK	0.67
15-150-20	BENZOIC+SALICYLIC ACID OINT/CREAM 6+3% 40G	TUBE	0.34
15-150-40	BENZOIC+SALICYLIC ACID OINT/CREAM 6+3% 1/2KG	JAR	2.28
15-195-00	BENZYL BENZOATE LOTION 25% 1L BTL	BOTL	2.42
15-200-00	BENZYL BENZOATE SAPONATED CONC SOLN 90% 1L	BOTL	5.71

UNICEF WAREHOUSE PRICE LIST FOR 1 APRIL 1998 TO 30 JUNE 1998

15-200-05	BENZYL PENICILLIN POWDER FOR INJ. WITH DILUENT	SET	25.38
15-200-11	BENZYL PENICILLIN PO. FOR INJ 3G(5M IU)BOX 50	BOX	22.17
15-230-00	CALAMINE LOTION 500ML	BOTL	1.64
15-230-05	DEKAMETHASONE INJ 4MG/ML, BOX 50 X 1 ML	BOX	5.31
15-310-00	CHLORAMPHENICOL CAP 250MG 1000	PACK	16.94
15-310-05	CHLORAMPHENICOL PDR. FOR INJ. 1G WITH DILUENT	SET	2.59
15-310-12	CHLORAMPHENICOL ORAL SUSP 150MG/5ML 60ML	BOTL	0.56
15-310-15	CHLORAMPHENICOL CAP 250MG 100	PACK	1.82
15-310-30	CHLORAMPHENICOL PWDR FOR INJ 1G BOX OF 5 VIALS	BOX	1.88
15-315-05	CHLORHEXIDINE CONC. SOLN 5% 1L	BOTL	2.70
15-315-10	CHLORHEXIDINE CONC. SOLN 5% BOTL 100ML	BOTL	0.56
15-317-00	CHLORPHENAMINE TAB 4MG 1000	PACK	2.16
15-320-00	CHLOROQUINE TAB 150MG 1000	PACK	9.06
15-320-02	CHLOROQUINE TABLETS 100MG BASE TIN OF 1000	PACK	6.57
15-323-05	KETAMINE HCL INJ 50MG/ML, BOX OF 25 X 10 ML VIAL	BOX	17.36
15-339-75	CHLOROQUINE SYRUP 50MG/5ML 60ML	BOTL	0.29
15-339-85	CHLOROQUINE SYRUP 50MG/5ML 1L	BOTL	2.26
15-339-95	CHLOROQUINE TAB 150MG 100	PACK	1.19
15-340-00	CHLORPHENAMINE TAB 4MG 100	PACK	0.37
15-349-50	CHLORPROMAZINE INJ 25MG/ML BOX 10 X 2ML AMP	BOX	0.77
15-350-10	CHLORPROMAZINE TAB 100MG 100	PACK	1.54
15-360-10	CIMETIDINE TAB 200MG 100	PACK	1.19
15-370-50	CLOXACILLIN CAP 500MG 100	PACK	6.50
15-370-60	CLOXACILLIN INJ. 500MG BOX/50 WITH DILUENT	SET	14.93
15-370-65	CLOXACILLIN PWDR FOR INJ 500 MG, BOX OF 50	BOX	12.67
15-371-00	SULFAMETHOXAZOLE+TRIMETHOPRIM TAB 400+80MG 500	PACK	5.35
15-371-10	SULFAMETHOXAZOLE+TRIMETHOPRIM TAB 400+80MG 100	PACK	1.18
15-371-15	SULFAMETHOXAZOLE+TRIMETHOPRIM TAB 100+20MG 100	PACK	0.45
15-371-30	SULFAMETHOXAZOLE+TRIMETHOPRIM 240MG/5MLPWDR/SUSP	BOTL	0.50
15-373-00	CLOXACILLIN CAPS 500MG, TIN OF 500	PACK	28.61
15-430-00	NALIDIXIC ACID TABLETS, 500MG	PACK	45.63
15-432-00	DEXTRAN-70 INJ SOLN WITH INFUSION SET 6% 500ML	SET	3.47
15-436-00	DIETHYLCARBAMAZINE TAB 50MG 1000	PACK	4.21
15-436-25	DIAZEPAM INJ 5MG/ML 10 X 2ML AMP	BOX	0.77
15-436-30	DIAZEPAM TAB 5MG 100	PACK	0.42
15-437-05	DIGOXIN TAB 0.25MG 100	PACK	0.87
15-437-20	DIGOXIN INJ 0.25MG/ML 10 X 2ML AMP	BOX	1.14
15-438-01	DIST. WATER FOR INJECTIONS INJ. 2ML X 50 AMPS	BOX	2.26
15-438-03	WATER FOR INJECTIONS 5ML BOX OF 50 AMPS	BOX	2.62
15-438-05	WATER FOR INJECTIONS 10ML BOX OF 50 AMPS	BOX	3.21
15-438-15	WATER FOR INJECTION 5ML - BOX/10 AMPOULES	BOX	0.71
15-444-00	DOXYCYCLINE HCL TAB/CAP 100 MG, 1000	PACK	11.89
15-449-50	EPHEDRINE HCL ELIXIR 15MG/5ML 100ML	BOTL	0.51
15-449-85	ERGOCALCIFEROL TAB/CAP 1.25MG 100	PACK	2.87
15-452-00	METHYLERGOMETRINE 0.2MG AMP 1ML BOX/10	BOX	0.80
15-455-00	METHYLERGOMETRINE TABLET 0.125MG 30	PACK	0.52
15-456-00	METHYLERGOMETRINE TABLET 0.125MG 100	PACK	0.82
15-457-00	METHYLERGOMETRINE TAB 0.125MG 500	PACK	2.97
15-463-00	ERYTHROMYCIN ORAL SUSP 125MG/5ML 60ML	BOTL	0.69
15-463-15	ERYTHROMYCIN TAB/CAP 250MG 100	PACK	3.66
15-464-00	ETHAMBUTOL TAB 400MG 500	PACK	11.36
15-500-00	FERROUS SALT TAB 60MG IRON 1000	PACK	2.08
15-500-05	FERROUS SALT TAB 60MG IRON 100	PACK	1.06
15-500-10	FERROUS SALT+FOLIC ACID TAB 60+0.25MG 1000	PACK	2.07

UNICEF WAREHOUSE PRICE LIST FOR 1 APRIL 1998 TO 30 JUNE 1998

15-500-20	FERROUS SALT+FOLIC ACID TAB 50+0.4MG - PACK/1000	PACK	2.86
15-505-00	FUROSEMIDE TAB 40MG 1000	PACK	4.81
15-505-25	FUROSEMIDE INJ 10MG/ML, BOX OF 10X2ML AMP	BOX	0.84
15-505-30	FUROSEMIDE TAB 40MG 100	PACK	0.69
15-510-00	FOLIC ACID TAB 1MG 1000	PACK	1.60
15-510-05	FOLIC ACID TAB 5MG PACK OF 1000	PACK	1.87
15-515-00	GLYCERYL TRINITRATE TAB 0.5MG 100	PACK	0.35
15-519-54	GENTAMICIN INJ 10MG/ML BOX OF 50 X 2ML AMP	BOX	3.85
15-519-60	GENTAMICIN INJ 40MG/ML 2ML AMP BOX OF 50 X 2ML	BOX	5.22
15-519-70	GENTAMICIN OPH OINM. 0.3% TUBE OF 5G	TUBE	0.34
15-520-02	GENTIAN VIOLET PWDR 25G	PACK	1.42
15-521-00	GLUCOSE ISOTONIC INJ SOLN 5% 500ML	SET	0.93
15-521-10	GLUCOSE HYPERTONIC INJ 50% 10 X 10ML	BOX	2.17
15-521-15	GLUCOSE HYPERTONIC INJ SOLN 50%, 20 X 50 ML	BOX	9.50
15-524-00	HYDROCHLOROTHIAZIDE TAB 50MG 1000	PACK	3.64
15-524-10	METHYLDOPA TABS 250MG PACK/100	PACK	2.55
15-524-15	HYDRALAZINE PDR. FOR INJ. 1 G WITH DILUENT	SET	7.97
15-524-16	HYDRALAZINE HCL PWD FOR INJ. 20MG BOX/5	BOX	3.63
15-525-00	HYDROCORTISONE OINT/CREAM 1% 15G	TUBE	0.36
15-525-05	ZINC OXIDE OINT. 10%, JAR 500 G.	JAR	2.20
15-526-05	HYDROCORTISONE PDR. FOR INJ. 100MG WITH DILUENT	SET	4.18
15-526-10	HYDROCORTISONE PWDR FOR INJ 100MG BOX OF 10 VIAL	BOX	3.46
15-530-00	IBUPROFEN TAB 200MG 100	PACK	0.85
15-531-00	IODINE SOLN 2.5% 30ML	BOTL	0.55
15-531-05	POVIDONE IODINE SOLN 10%, 500 ML	BOTL	1.81
15-540-00	ISONIAZID TAB 100MG 1000	PACK	2.85
15-540-01	ISONIAZID TAB 300MG 1000	PACK	8.17
15-540-03	THIOACETAZONE+ISONIAZID TAB 50+100MG 1000	PACK	4.57
15-541-00	THIOACETAZONE+ISONIAZID TAB 150+300MG 1000	PACK	10.50
15-552-05	LIDOCAINE HCL INJ 1% 5 X 50ML	BOX	1.97
15-552-80	LIDOCAINE HCL INJ 2% 50ML BOX OF 5 X 50ML	BOX	2.02
15-552-90	LIDOCAINE 5% + GLUCOSE 7.5% INJECTION 2ML	BOX	1.32
15-553-02	LIDOCAINE HCL TOPICAL GEL 2% 30G	TUBE	0.56
15-553-55	MEBENDAZOLE TAB 100MG 100	PACK	0.67
15-553-60	MEBENDAZOLE TAB 500MG PACK OF 100	PACK	2.82
15-556-30	METRONIDAZOLE TAB 250MG 100	PACK	0.83
15-556-50	METRONIDAZOLE TAB 250MG 1000	PACK	5.49
15-556-80	METRONIDAZOLE INJECTION 500MG/100ML	BOX	0.61
15-556-90	METRONIDAZOLE ORAL SUSPENSION 200MG/5ML, 100ML	BOTL	0.50
15-557-00	CIPROFLOXACIN TABLETS 250MG (AS HYDROCHLORIDE)	PACK	10.94
15-558-85	NICLOSAMIDE TAB 500MG 100	PACK	1.97
15-559-00	NYSTATIN OINT/CREAM 100,000/G 30G	TUBE	0.48
15-559-10	NYSTATIN PESSARIES 100,000 IU PACK OF 15	PACK	0.51
15-559-20	NYSTATIN TAB 500,000 IU 100	PACK	3.84
15-559-25	NYSTATIN LOZENGES 100000 IU (UNCOATED) PACK/1000	PACK	11.24
15-559-30	NYSTATIN ORAL SYSPENSION 100,000 I.U./ML, 30ML	BOTL	0.88
15-559-50	MORPHINE SULFATE INJECTION 10MG, 1ML AMP	BOX	3.41
15-559-65	PARACETAMOL TAB 500MG 1000	PACK	6.05
15-559-68	PROBENECID TAB. 500 MG, PACK OF 500	PACK	19.87
15-559-70	PENTAZOCINE INJ 30 MG/ML, BOX 10 X 1 ML AMP	BOX	2.02
15-559-75	PARACETAMOL TAB 100MG 100	PACK	0.49
15-559-78	PARACETAMOL TAB 100MG 1000	PACK	2.87
15-559-80	PARACETAMOL SUPPOS 100MG PACK OF 100	PACK	2.32
15-559-90	PARACETAMOL ELIXIR 125MG/5ML BOTTLE 60ML	BOTL	0.24

UNICEF WAREHOUSE PRICE LIST FOR 1 APRIL 1998 TO 30 JUNE 1998

15-579-75	BENZYL PENICILLIN INJ. 0.6G, BOX/50 WITH DILUENT	SET	11.16
15-579-85	BENZYL PENICILLIN INJ 0.6G BOX OF 50	BOX	8.53
15-589-75	BENZATHINE BENZYL PENICILLIN INJ 1.44G BOX/50 +DIL.	SET	23.44
15-590-05	BENZATHINE BENZYL PENICILLIN PWDR INJ 2.4MU X 50	BOX	20.24
15-590-50	PHENOXYMETHYL PENICILLIN TAB 250MG 100	PACK	1.80
15-590-80	PHENOXYMETHYL PENICILLIN TAB 250MG 1000	PACK	11.71
15-590-90	PHENOXYMETHYL PENICILLIN ORAL SUSP. 250MG/5ML	BOTL	0.52
15-592-00	PROMETHAZINE TAB 25MG 100	PACK	0.67
15-592-05	PROMETHAZINE ELIXIR 5MG/5ML 250ML	BOTL	0.70
15-592-11	PROMETHAZINE INJ 25MG/ML 2ML BOX OF 10 X 2ML AMP	BOX	0.97
15-593-05	PHENOBARBITAL TAB 100MG 100	PACK	0.77
15-593-10	PHENOBARBITAL TAB 50MG 100	PACK	0.59
15-593-30	SODIUM/VALPROATE 200MG/5ML SYRUP, 100ML	BOTL	3.43
15-600-00	PIPERAZINE TAB 500MG 1000	PACK	9.66
15-600-25	PIPERAZINE SYRUP 500MG/5ML 30 ML	BOTL	0.34
15-601-10	PROPRANOLOL TAB 40MG 100	PACK	0.62
15-601-50	PYRAZINAMIDE TAB 500MG 100	PACK	3.77
15-601-85	PYRIDOXINE TAB 25MG 100	PACK	0.44
15-602-50	PRAZIQUANTEL TAB 600MG 100	PACK	15.60
15-602-55	PRAZIQUANTEL TAB 600MG 1000	PACK	126.89
15-603-00	PREDNISOLONE TAB 5MG 1000	PACK	6.81
15-603-10	PREDNISOLONE TAB 5MG 100	PACK	0.93
15-606-00	QUININE DIHCL INJ 300MG/ML 10X2ML	BOX	1.47
15-606-10	QUININE TAB 300MG 100	PACK	4.45
15-606-76	PROCAINE BENZYL PENICILLIN INJ. 1G BOX/50 + DIL.	SET	12.04
15-606-78	PROCAINE BENZYL PENICILLIN INJ 1G. 50 VIALS	BOX	9.42
15-606-82	PROCAINE BENZYL PENICILLIN PWDR FOR INJ 3G X 10	BOX	4.91
15-606-84	PROCAINE BENZYL PENICILLIN INJ 3G BOX/50 W/DIL.	SET	23.87
15-606-85	PROCAINE BENZYL PENICILLIN INJ 3G BOX OF 50 VIALS	BOX	20.67
15-607-00	RIFAMPICIN TAB/CAP 150MG 100	PACK	3.25
15-607-10	RIFAMPICIN TAB/CAP 300MG 100	PACK	5.44
15-608-00	SODIUM LACTATE COMP. INJ SOLN 500ML	SET	0.92
15-611-10	ORAL REHYDRATION SALTS POWDER SACHET FOR 1L 100	BOX	6.42
15-611-11	ORAL REHYDRATION SALTS (CTN OF 10 BOX/100)	CTN	64.16
15-620-15	SALBUTAMOL TAB 4MG 1000	PACK	3.51
15-620-20	SALBUTAMOL ORAL INH. 0.1MG 200/DOSES	EACH	1.43
15-620-30	SALBUTAMOL TAB 4MG 100	PACK	0.43
15-620-40	SALBUTAMOL SYRUP 2MG/5ML, 150ML	BOTL	0.41
15-620-50	SALBUTAMOL SOLUTION FOR NEBULISER 0.5%, 20ML	VIAL	3.24
15-639-00	SENNA TAB 7.5MG 100	PACK	0.83
15-640-55	SILVER NITRATE OPH DROPS 1% 10ML	BOTL	1.47
15-643-00	SODIUM BICARBONATE INJ 1.4% 50ML	VIAL	0.67
15-643-20	SODIUM CHLORIDE INJ SOLN 0.9% 500ML	SET	0.92
15-650-05	STREPTOMYCIN SULFATE INJ. 1G BOX/50 WITH DILUENT	SET	12.90
15-650-10	STREPTOMYCIN SULFATE PO. FOR INJ 1G BASE BOX 50	BOX	10.28
15-680-25	SULFADIMIDINE TAB 500MG 1000	PACK	10.21
15-680-40	SULFADOXINE+PYRIMETHAMINE TAB 500+25 MG, 100	PACK	3.33
15-680-45	SULFADOXINE+PYRIMETHAMINE TAB 500+25MG 1000	PACK	30.33
15-690-00	TETRACYCLINE TAB/CAP 250MG 1000	PACK	10.93
15-690-10	TETRACYCLINE TAB/CAP 250MG 100	PACK	1.33
15-695-50	THIOPENTAL INJ. 1G BOX/25 WITH DILUENT	SET	18.61
15-695-75	TIABENDAZOLE CHEW TAB 500MG 100	PACK	4.26
15-696-00	THIOPENTAL PWDR FOR INJ 1G BOX OF 25	BOX	15.40
15-696-50	NALOXONE HYDROCHLORIDE INJECTION 400MCG, 1ML	BOX	1.22

UNICEF WAREHOUSE PRICE LIST FOR 1 APRIL 1998 TO 30 JUNE 1998

15-720-10	THIAMINE TAB 50MG 100	PACK	0.71
15-750-00	VERAPAMIL TAB 40MG 1000	PACK	11.06
15-800-00	ASCORBIC ACID 50MG PACK/1000	PACK	2.01
15-800-05	ASCORBIC ACID TAB 250 MG, PACK OF 1000	PACK	8.11
15-830-00	RETINOL CAPS HIGH POTENCY 200,000IU PACK/500	PACK	8.35
15-830-05	RETINOL CAPS HIGH POTENCY 200,000IU PACK/100	PACK	2.06
15-830-15	RETINOL SOFT GELETIN CAPSULES 100,000 IU	PACK	5.90
15-850-00	CALCIUM GLUCONATE INJECTION 100MG/ML, 10ML AMP.	BOX	1.53
15-880-00	WATER PURIFICATION TABS FOR 1 LITRE, PACK OF 100	PACK	4.92
15-880-05	WATER PURIFICATION TABS 5 LITRE PACK OF 50	PACK	5.00
15-882-00	WATER PURIFICATION POWDER, PACK OF 10 X 1G	PACK	10.27

CODE GROUP 17 TEACHING AIDS USD

17-120-00	ANATOMY-CHART PREGNANCY SET OF 8 (ENGLISH TEXT)	SET	27.37
17-180-10	BIRTH-ATLAS SLIDES/SCRIPT (ENGLISH TEXT)	EACH	23.65
17-210-75	FEEDING YOUR BABY: FILMSTRIP/SCRIPT (ENGLISH)	EACH	11.68
17-250-00	FLANNELGRAPH-PICTURES (NUTRITION/BIRTH) SET OF 2	SET	6.66
17-512-00	HUMAN DEVELOPMENT/GROWTH: SLIDES/TAPE (ENGLISH)	EACH	44.27
17-615-00	NEWBORN CARE IN AFRICA: SLIDES/TAPE (ENGLISH)	EACH	28.41
17-630-00	CHILD BIRTH SIMULATOR WITH FOETUS AND PLACENTA	EACH	209.87
17-650-00	PELVIC-ORGANS FEMALE LIFE-SIZE SAGITTAL MODEL	EACH	107.49
17-681-00	PROTEIN-CALORIE-DEFICIENCY: SLIDES/TAPE (ENGLISH)	EACH	28.81
17-690-40	CHARTING GROWTH IN SMALL CHILDREN: SLIDES/TAPE ENG	EACH	28.99

CODE GROUP 18 AUDIOVISUAL EQUIPMENT & SUPPLIES USD

18-001-46	CAMERA 35MM AUTOFOCUS WITH CASE	EACH	156.31
18-002-75	ENLARGER FOR 35MM FILM W/50MM F3.5LENS 220V	EACH	549.12
18-003-15	FILM 35MM BLACK & WHITE 100 ASA 36 EXP.	ROLL	3.67
18-003-16	FILM 35MM COLOUR SLIDE ASA 100 24 EXP	ROLL	4.15
18-003-18	FILM 35MM COLOUR SLIDE ASA 400 24 EXP.	ROLL	5.79
18-003-19	FILM 35 MM COLOUR SLIDE ASA 160 24 EXP.	ROLL	3.87
18-003-20	FILM 35MM COLOUR PRINT ASA 100 24 EXP.	ROLL	2.57
18-003-21	FILM 35MM COLOUR PRINTS ASA 400 24 EXP.	ROLL	3.08
18-003-56	GENSET, PORTABLE PETROL DRIVEN, 220V 50HZ	EACH	805.20
18-003-57	PLUG, MALE FOR GENSET 1800356	EACH	14.51
18-004-50	MOUNT FOR 35MM SLIDES BOX OF 100	BOX	4.14
18-006-60	PROJECTOR 16MM, OPTICAL, SOUND, MULTIVOLT 50/60HZ	EACH	1362.71
18-006-65	LAMP REPLACEMENT FOR PROJECTOR 1800660 MULTIVOLT	EACH	24.30
18-020-53	LAMP REPLACEMENT FOR PROJECTOR 1802050 MULTIVOLT	EACH	2.70
18-020-55	PROJECTOR WITH SLIDE MAGAZINE AND LAMP	SET	145.01
18-020-60	PROJECTOR, 35MM SLIDES/FILMSTRIPS, MULTI-VOLT.	SET	136.71
18-020-61	LAMP FOR SLIDE PROJECTOR 1802060	EACH	2.86
18-020-62	SLIDE MAGAZINE, UNIVERSAL TYPE	BOX	2.59
18-021-15	SLIDE PROJECTOR WITH ROTARY TRAY, MULTIVOLTAGE	SET	531.72
18-021-16	SLIDE TRAY ROTARY, FOR 80 SLIDES	EACH	7.74
18-021-24	LAMP 12V 20W, SPARE FOR 12V PROJECTOR 1802122	EACH	14.27
18-021-32	LAMP FOR PROJECTOR 1802100 100W 220V	EACH	13.14
18-022-10	BATTERY DRY CELL "AA" TYPE 1.5V	EACH	0.24
18-022-11	BATTERY DRY CELL "C" TYPE 1.5V	EACH	0.51
18-022-12	BATTERY ALKALINE DRY CELL "D" TYPE 1.5V	EACH	0.77

UNICEF WAREHOUSE PRICE LIST FOR 1 APRIL 1998 TO 30 JUNE 1998

18-022-15	RECHARGEABLE BATTERY SIZE D (NICAD)	EACH	3.58
18-022-17	RECHARGEABLE BATTERY SIZE AA (NICAD)	EACH	1.33
18-022-19	BATTERY CHARGER, COMBI 110/220V	EACH	7.10
18-028-05	LAMP REPLACEMENT FOR PROJECTOR 1802802 110V	EACH	8.77
18-028-07	ACETATE TRANSPARENT FOR PROJECTOR 1802802	ROLL	3.90
18-028-08	FELT-TIPPED-PEN FOR ACETATE SET OF 6 ASSTD COLRS	SET	3.02
18-028-09	TRANSPARENCIES FOR OVERHEAD PROJECTOR - PKT/100	PKT	5.07
18-028-12	MOUNT FOR TRANSPARENCIES	PKT	6.28
18-028-22	LAMP REPL. FOR PROJECTOR 1803020 220V	EACH	2.29
18-030-20	OVERHEAD PROJECTOR SIZE A4, 220V 50/60HZ	EACH	211.48
18-064-02	LAMP REPLACEMENT FOR PROJECTOR 1800300 1000W220V	EACH	29.02
18-100-00	SCREEN PROJECTION PORTABLE 1.27X1.27M	EACH	59.30
18-102-00	SCREEN PROJECTION PORTABLE 1.78X1.78M	EACH	81.59
18-104-00	SCREEN PROJECTION PORTABLE 1.80X2.44M	EACH	171.35
18-107-00	STAND FOR PROJECTORS PORTABLE ALUMINIUM	EACH	149.60
18-109-05	RADIO CASSETTE RECORDER WITH BATTERIES	SET	55.33
18-109-12	RADIO CASSETTE RECORDER, FM, MW, 2XSW	EACH	50.74
18-111-85	BOX FOR STORING 300 35MM SLIDES METAL	EACH	16.69
18-112-80	STAND TRIPOD WITH CAMERA PAN HEAD	EACH	59.69
18-114-00	TIMER (COUNTER) INTERVAL AUTOMATIC 220V 50HZ	EACH	21.14
18-280-00	FLANNELETTE APPROX 1 X 0.8M WIDE BLACK	EACH	3.25
18-280-04	FLANNELETTE APPROX 1 X 0.8M WIDE BLUE	EACH	2.66
18-280-08	FLANNELETTE APPROX 1 X 0.8M WIDE GREEN	EACH	2.67
18-280-12	FLANNELETTE APPROX 1 X 0.8M WIDE RED	EACH	2.64
18-280-14	FLANNELETTE APPROX 1 X 0.8M WIDE YELLOW	EACH	2.53
18-445-00	MEGAPHONE WITH BATTERIES	SET	37.83
18-450-00	MEGAPHONE LOUD-HAILER-TYPE TRANSISTORIZED	EACH	35.88
18-550-00	PUBLIC-ADDRESS-SET MOBILE TRANSISTORIZED 12V	SET	207.12
18-570-00	PUBLIC ADDRESS SYSTEM FOR FIXED INSTALL MULTIVLT	SET	857.94
18-660-00	VHS VIDEO CASSETTE HIGH GRADE 1 HOUR E-60/T-60	EACH	2.31
18-662-00	VHS VIDEO CASSETTE HIGH GRADE 2 HOUR E-120/T-120	EACH	2.51
18-668-00	VHS VIDEO CASSETTE HIGH GRADE 3 HOUR E-180/T-180	EACH	2.48
18-675-00	VHS VIDEO CLEANER CASSETTE	SET	9.16
18-676-00	REFILL FOR VIDEO CLEANER CASSETTE	EACH	3.55
18-838-10	CASSETTE TAPE FOR RECORDERS C-90	EACH	0.65
18-838-11	CASSETTE TAPE FOR RECORDERS C-60	EACH	0.71
18-845-00	TAPE RECORDER CASSETTE WITH CASSETTE + BATTERIES	SET	26.27
18-845-20	TAPE RECORDER CASSETTE 220V/BATTERY	EACH	22.93
18-850-00	TAPE MAGNETIC RECORDING 366M ON 180MM REEL	EACH	4.38
18-855-00	VOLTAGE REGULATOR 1100W 140-240V INPT 220V OUTPT	EACH	397.47
18-870-00	TRANSFORMER STEP-DOWN 1500W 220V TO 110V	EACH	79.46

CODE GROUP 19 BOOKS & PUBLICATIONS USD

19-219-90	CONCISE OXFORD DICTIONARY OF CURRENT ENGLISH	EACH	25.34
19-270-15	THE FIRST-AID MANUAL	EACH	15.90
19-875-00	GUIDE - PRIMARY HEALTH CARE EQUIPMENT	EACH	0.00
19-888-00	MERCK MANUAL 13TH EDITION	EACH	0.10
19-933-05	CLINICAL GUIDELINES	EACH	10.00
19-934-05	TREATMENT GUIDELINES	EACH	0.54
19-935-10	FACTS FOR LIFE, SECOND EDITION, ENGLISH	EACH	0.52
19-935-11	FACTS FOR LIFE, SECOND EDITION, FRENCH	EACH	0.55
19-935-12	FACTS FOR LIFE, SECOND EDITION, SPANISH	EACH	0.55

UNICEF WAREHOUSE PRICE LIST FOR 1 APRIL 1998 TO 30 JUNE 1998
--

19-935-13	FACTS FOR LIFE, SECOND EDITION, PORTUGUESE	EACH	0.59
19-935-14	FACTS FOR LIFE, SECOND EDITION, ARABIC	EACH	1.03
19-935-20	CHILDREN FOR HEALTH, ENGLISH EDITION	EACH	0.00
19-935-25	CHILDREN FOR HEALTH, FRENCH EDITION	EACH	0.00
19-980-00	GUIDELIST AQUA PLUS: WATER SUPPLY AND SANITATION	EACH	0.00
19-985-00	GUIDELIST A. V. PLUS	EACH	0.00
19-997-15	MANAGE THE COLD CHAIN WHO PUBLICATION	EACH	2.25
19-997-40	HOW TO USE THE VACC. COLD CHAIN MONITOR	EACH	2.08
19-997-65	HOW TO BOIL SYRINGES & NEEDLES PROPERLY	EACH	0.22
19-997-70	STEAM STERILIZER BOOKLET - PRESTIGE	EACH	1.47
19-998-10	CATALOGUE NES ARNOLD: PRIMARY (EDUCATION EQUIP.)	EACH	1.00
19-999-05	CATALOGUE MCMASTER-CARR SUPPLY: WORKSHOP TOOLS	EACH	0.01
19-999-46	SONY PRODUCT CATALOGUE, AUDIO-VISUAL EQUIPMENT	SET	0.00
19-999-68	CATALOGUE LUNA INTERNATIONAL: WORKSHOP TOOLS	EACH	0.00

CODE GROUP 20	KITCHEN EQUIPMENT AND SUPPLIES	USD
---------------	--------------------------------	-----

20-004-02	HOTPLATE ELECTRIC 2-BURNER 220V	EACH	28.69
20-015-00	REFRIGERATOR ELECTRIC 110-140L/4-5FCT 220V 50HZ	EACH	166.81
20-020-00	REFRIGERATOR ELECTRIC 285L/10CFT 220V 50/60HZ	EACH	356.67
20-030-00	STOVE BUTANE GAS 4-BURNER W/OVEN FLOOR MODEL	EACH	360.14
20-042-00	STOVE BUTANE GAS 3-BURNER W/O OVEN TABLE MODEL	EACH	32.67
20-045-00	STOVE BUTANE GAS 1-BURNER W/O OVEN TRIPOD MODEL	EACH	34.87
20-050-00	STOVE KEROSENE 2-BURNER NON-PRESSURE FLOOR MODEL	EACH	51.61
20-065-00	STOVE KEROSENE 2-BURNER NON-PRESSURE TABLE MODEL	EACH	42.45
20-100-00	STOVE ELECTRIC 4-BURNER W/OVEN 220/380V 50/60HZ	EACH	271.63
20-200-20	BOWL, MIXING, MEDIUM	EACH	1.67
20-200-30	BOWL, MIXING, LARGE	EACH	2.56
20-210-00	BOWL MIXING 4 LTR SS	EACH	4.54
20-225-00	BOWL SERVING & STORAGE 3-1/2 LITRE POLYPROPYLENE	EACH	3.37
20-225-22	BOWL SUGAR & CREAMER SET MELAMINE	SET	1.74
20-225-30	CASSEROLE CAST IRON 240MM DIAMETER	EACH	47.87
20-249-90	PAN FRYING DIAMETER 250MM ALUMINIUM	EACH	12.39
20-250-00	PAN FRYING DIAMETER 250MM CAST IRON	EACH	14.94
20-260-00	PAN FRYING DIAMETER 220MM STAINLESS STEEL	EACH	9.83
20-320-00	BOWL UTILITY/WASHING 12 LTR POLYETHYLENE	EACH	2.53
20-345-50	POT COOKING (DOUBLE BOILER) 2 LITRE CAPACITY SS	EACH	21.27
20-347-00	COUSCOUSSIER (RICE COOKER) 45 & 50 LTR ALUM	EACH	143.22
20-348-00	POT COOKING WITH COVER & SPIGOT 23 LTR ALUMINIUM	EACH	34.38
20-360-00	POT COOKING (SAUCEPAN) W/LID 180MM 2.5 LTR SS	EACH	12.99
20-365-10	COOKING-SET EMERGENCY USE FAMILY-SIZE 16 PIECES	SET	17.76
20-365-15	POT DEEP-FRYING W/BASKET DIAM 300MMX190MM ALUM	EACH	37.64
20-377-00	POT STOCK W/COVER 8 LTR SS	EACH	39.13
20-390-00	POT STOCK W/COVER APPROX. 36 LTR SS	EACH	88.63
20-392-00	POT STOCK W/COVER 100 LTR ALUMINIUM	EACH	105.75
20-470-00	KETTLE TEA 3 LITRE CAPACITY ALUMINIUM	EACH	12.54
20-500-00	BEATER EGG SS WITH HANDLE	EACH	4.82
20-514-00	BOWL SOUP 385ML CAPACITY MELAMINE	EACH	0.97
20-514-20	BOWL-PLATES-CUTLERY NESTED SET OF 5 PIECES	SET	6.38
20-520-00	COLANDER/STRAINER 3 LTR ALUMINIUM	EACH	5.08
20-522-00	CONTAINER COVERED DIAM 85MMX95MM 350ML PLASTIC	EACH	1.39
20-526-00	CUP BABY 150ML CAPACITY SS	EACH	2.08
20-530-00	CUP & SAUCER (220ML CUP) MELAMINE	SET	1.44

UNICEF WAREHOUSE PRICE LIST FOR 1 APRIL 1998 TO 30 JUNE 1998

20-540-00	CUTLERY (TABLEWARE) SS SET OF 4 PIECES	SET	1.43
20-568-50	FUNNEL SIDE-VENTED DIAM STEM 12MM CAP 240ML ALUM	EACH	2.17
20-570-00	FUNNEL ALL-PURPOSE POLYPROPYLENE SET OF 3	SET	1.14
20-590-00	GRATER/SHREDDER 4-SIDED COARSE-TO-FINE SS	EACH	3.06
20-594-85	GRINDER (MILL) CORN LOW-HOPPER STANDARD PATTERN	EACH	38.29
20-595-00	GRINDER/MEAT CHOPPER W/3 BLADES MANUAL CAST-IRON	EACH	14.46
20-595-03	GRINDER VEGETABLE W/3 BLADES MANUAL	EACH	7.11
20-599-60	JAR UTILITY/CANNING WIDE-MOUTH 370 ML	EACH	0.60
20-599-64	JAR UTILITY/CANNING WIDE-MOUTH 1 LTR/1 QUART	EACH	1.05
20-599-76	JUICER FRUIT HAND-OPERATED ALUM.	EACH	7.74
20-600-00	KNIFE KITCHEN UTILITY SERRATED 150MM SS BLADE	EACH	1.70
20-605-00	KNIFE KITCHEN UTILITY PLAIN EDGE 150MM SS BLADE	EACH	2.30
20-610-00	KNIFE KITCHEN UTILITY PLAIN EDGE 200MM SS BLADE	EACH	1.56
20-615-00	KNIFE KITCHEN UTILITY SERRATED 120MM SS BLADE	EACH	1.01
20-630-00	KNIFE BREAD SERRATED 200MM SS BLADE	EACH	1.40
20-640-00	SHARPENER KNIFE	EACH	3.68
20-650-00	LADLE KITCHEN (DIPPER) 250 ML SS	EACH	3.03
20-675-00	MEASURING-CUP 500ML/16 OZ/2 CUPS HEAT-RES GLASS	EACH	2.53
20-680-00	MEAT-CLEAVER 150MM STEEL BLADE	EACH	24.41
20-690-00	MUG DRINKING 350ML MELAMINE	EACH	1.35
20-710-00	OPENER CAN AND BOTTLE COMBINATION W/CORK SCREW	EACH	0.86
20-710-10	OPENER CAN BUTTERFLY-HANDLE TYPE	EACH	0.48
20-730-00	POTATO-MASHER STAINLESS STEEL	EACH	4.69
20-750-00	SHEETING PLASTIC FOR TABLE-COVERS WIDTH 1.35 MTR	MTR	4.12
20-758-00	PLATE BREAD & BUTTER DIAM 165MM MELAMINE	EACH	1.17
20-760-00	PLATE DINNER DIAM 230MM HEAVY-DUTY MELAMINE	EACH	1.43
20-762-00	PLATE SOUP DIAM 250MM HEAVY-DUTY MELAMINE	EACH	1.20
20-790-00	SKIMMER PERFORATED SHALLOW BOWL 115 MM	EACH	1.63
20-800-00	SPATULA KITCHEN BRAOD BLADE 290 MM	EACH	0.91
20-820-00	SPOON COOKING SOLID BOWL 390 MM LONG SS	EACH	2.43
20-835-00	SPOON COOKING SLOTTED BOWL 380MM LONG SS	EACH	2.64
20-840-00	SPOON TABLE	EACH	0.31
20-850-00	SPOON MEASURING SS SET OF 4	SET	1.16
20-867-00	SPOON TEA LARGE STAINLESS STEEL	EACH	0.16
20-870-00	SQUEEZER FRUIT JUICE 2-PIECE	EACH	1.16
20-897-00	STRAINER TEA METAL W/PLASTIC HANDLE DIAM 63MM	EACH	1.35
20-950-00	TUMBLER/DRINKING GLASS 150ML GLASS	EACH	0.57

CODE GROUP 21 HOME LAUNDRY EQUIPMENT & SUPPLIES USD

21-050-00	BASIN UTILITY 480X230MM 30LTR PLASTIC	EACH	4.07
21-350-00	GLOVES LATEX HEAVY DUTY HOUSEHOLD TYPE	PAIR	0.55
21-517-00	IRON FLAT CAST-IRON 160 MM X 90 MM 1.5 KG	EACH	3.76
21-530-00	IRON FLAT CHARCOAL BOX TYPE BURNER	EACH	7.35
21-540-00	IRON-REST METAL	EACH	1.17
21-700-00	PAIL WITH BAIL HANDLE 10 LTR POLYETHYLENE	EACH	1.61
21-702-00	PAIL WITH BAIL HANDLE 12 LTR GALVANIZED STEEL	EACH	5.36
21-820-00	WASH-TUB OVAL 65LTR GALVANIZED STEEL	EACH	8.20

CODE GROUP 22 KNITTING AND SEWING MATERIALS USD

22-050-00	BOX WITH COVER 228X178X72MM PLASTIC	EACH	1.56
-----------	-------------------------------------	------	------

UNICEF WAREHOUSE PRICE LIST FOR 1 APRIL 1998 TO 30 JUNE 1998

22-100-00	CHALK TAILOR'S PENCIL-TYPE-HOLDER W/2 REFILLS	EACH	0.72
22-250-00	EMBROIDERY-FRAME ROUND W/SCREW DIAM 200MM WOODEN	EACH	2.55
22-275-00	FASTENER PRESS-STUD (SNAP) CARD OF 36 WHITE	CARD	0.58
22-276-00	FASTENER PRESS-STUD (SNAP) CARD OF 36 BLACK	CARD	1.58
22-280-00	FASTENER HOOK-AND-EYE CARD OF 12 RUSTLESS	CARD	1.06
22-281-00	FASTENER HOOK-AND-EYE CARD OF 12 BLACK	CARD	0.14
22-350-00	HOOK CROCHET ASSORTED SIZES BOX OF 12	BOX	3.55
22-450-00	NEEDLE SEWING DARNING SIZE 3 PACKET OF 25	PKT	1.04
22-460-00	NEEDLE SEWING DARNING/CREWEL SIZE 7 PACKET OF 25	PKT	0.35
22-470-00	NEEDLE SEWING RAFFIA SIZE 7 PACKET OF 25	PKT	3.08
22-480-05	NEEDLE, SEWING, SHARPS, SIZES 5-9, SET OF 20	SET	0.57
22-701-00	SHEARS DRESSMAKING 200MM LONG BENT HANDLE	EACH	10.24
22-705-00	SCISSORS ALL-PURPOSE/HOUSEHOLD 180MM	EACH	1.70
22-715-00	GRINDER SCISSORS	EACH	4.15
22-855-16	SEWING MACHINE TREADLE HOUSEHOLD W/O CASE	EACH	105.73
22-857-20	SEWING-MACHINE TREADLE SEMI-IND W/O CASE	EACH	104.78
22-857-25	STAND/CABINET FOR TREADLE MACHINE S/IND 2285720	EACH	124.54
22-857-30	SEWING-MACHINE TREADLE SEMI-IND W/STAND&CABINET	SET	229.33
22-860-02	SEWING MACHINE PORTABLE 220V 50HZ 2286010 W/CASE	SET	230.34
22-860-10	SEWING MACHINE PORTABLE	EACH	210.97
22-860-75	CASE FOR ELECTRIC SEWING-MACHINE 2286010	EACH	19.37
22-890-00	SHEARS PINKING 178MM LONG OVERALL CHROME PLATED	EACH	4.47
22-894-05	SHEETING COTTON WIDTH 1.45 M +/- 2 CM	MTR	1.29
22-921-00	THIMBLE METAL MEDIUM SIZE	EACH	0.19
22-930-00	THREAD SEWING SIZE NO 40 SPOOL OF 500M BLACK	SPL	1.05
22-932-00	THREAD SEWING SIZE NO 50 SPOOL OF 500M WHITE	SPL	1.01
22-950-00	TRACING-WHEEL TAILOR'S METAL W/PLASTIC HANDLE	EACH	1.17

CODE GROUP 25

PLAY MATERIALS

USD

25-070-00	BLOCK BUILDING TOY HOLLOW SET OF 12 LARGE	SET	12.15
25-105-00	ANIMAL TOY STUFFED PLUSH 130 TO 250 MM SET OF 5	SET	13.62
25-120-00	BLOCKS 25MM COLOURED CUBES SET 100 WOOD/PLASTIC	SET	8.51
25-130-00	DOLL BABY 250-350MM RUBBER/VINYL LIGHT COLOUR	EACH	7.12
25-130-10	DOLL BABY 27 CM VINYL AFRICAN FEATURES	EACH	6.73
25-140-00	EASEL PAINTING DOUBLE-SIDED W/PANELS AND TRAYS	EACH	87.14
25-200-00	JIGSAW-PUZZLE BEGINNERS 4 TO 7 PIECES WOOD	EACH	3.33
25-205-00	JIGSAW-PUZZLE INTERMEDIATE 8 TO 16 PIECES WOOD	EACH	2.36
25-210-00	JIGSAW-PUZZLE INTERLOCKING 30 OR MORE PCES WOOD	EACH	3.27
25-285-00	TOY NESTED BARRELS WOOD/PLASTIC SET OF 6	SET	1.53
25-295-00	PAPER NEWSPRINT 450X600MM REAM OF 500 SHEETS	REAM	5.62
25-340-00	POUNDING-BENCH TOY W/HOLES PEGS & Mallet WOOD	EACH	8.60
25-350-00	PUPPET HAND CHILD-SIZE SET OF 6	SET	12.57
25-400-00	RATTLE LIGHT WEIGHT SHATTERPROOF SET OF 4	SET	3.55
25-550-00	SCISSORS SAFETY SCHOOL TYPE 114MM LONG BLUNT	EACH	0.71
25-555-00	SCISSORS SAFETY SCHOOL TYPE 127MM LONG SHARP	EACH	0.81
25-600-02	DOMINOES STANDARD	EACH	5.49
25-650-00	TOY NESTED BEAKERS/BLOCKS SET OF 8	SET	1.86
25-660-00	TRUCK TOY (PULL-TOY) 230MM WOOD	EACH	6.58
25-670-00	TREASURE-BASKET (POSTAL-BOX) TOY PLASTIC	EACH	4.41
25-840-05	CRAYON WAX IN 8 ASSORTED COLOURS	BOX	0.24
25-870-00	BEADS WOODEN DIAM 25MM WITH LACES BOX OF 100	BOX	19.48
25-930-00	BLOCK BUILDING TOY WOOD SET OF 80 SMALL	SET	12.85

UNICEF WAREHOUSE PRICE LIST FOR 1 APRIL 1998 TO 30 JUNE 1998

25-940-00	PEOPLE SET OF 8 WOODEN FIGURES	SET	2.94
25-945-00	ANIMAL SET OF 9 WOODEN FIGURES	SET	12.74
25-950-00	ANIMAL/PEOPLE SET OF 100 WOODEN FIGURES	SET	17.45
25-960-00	VEHICLE FOR FLOOR PLAY WOOD SET OF 4 LARGE	SET	28.81
25-965-00	VEHICLE FOR TABLE PLAY WOOD SET OF 4 SMALL	SET	27.79

CODE GROUP 26 HANDICRAFT-VOCATIONAL TRAINING MATERIALS USD

26-045-00	BRUSH FOR POWDER-PAINTS SET OF 6 ASSORTED	SET	1.66
26-045-10	BRUSH FOR WATERCOLOR PAINTS SET OF 6 ASSORTED	SET	1.16
26-075-00	CARDBOARD WHITE FOR FLANNELGRAPH USE 460X640MM	EACH	2.03
26-085-00	CLAY MODELLING RED BOX OF 4 STICKS X 114 G EACH	BOX	0.79
26-350-00	PAPER CRAFT W/130MM ALUM HANDLE & 5 ASSTD BLADES	SET	2.53
26-350-10	KNIFE FOLDING ALL PURPOSE	EACH	5.51
26-400-00	SHEARS FOR LEATHERWORK	EACH	13.53
26-520-00	PEN LIQUID-MARKER TYPE LARGE SET OF 8-10 COLOURS	SET	0.37
26-560-00	PAINT POWDER WATER-SOLUBLE SET OF 8 TINS OF 454G	SET	8.52
26-572-00	PAPER CONSTRUCTION 300X450MM ASSORTED COLOURS	REAM	11.74
26-572-10	PAPER SELF-ADHESIVE (LABELS) 76X26MM SET 6 ROLLS	SET	8.29
26-573-00	PAPER PAINTING & DRAWING 450X600MM PAD 50 SHEETS	EACH	2.25
26-573-15	PAPER SKETCHING PAD OF 50 SHEETS 230X310MM	EACH	0.40
26-611-00	PAINT FOR POSTERS/SHOWCARDS JARS OF 22ML SET 8	SET	2.21
26-645-00	PUNCH PAPER HAND SINGLE-HOLE	EACH	1.35
26-786-00	SAW HACK JUNIOR 254MM WITHOUT SAW BLADES	EACH	1.60
26-786-02	BLADE FOR HACKSAW 2678600 150MM	EACH	0.05
26-840-06	COLOURING PENCILS IN METAL BOX	BOX	1.23
26-870-02	TAPE ADHESIVE TRANSPARENT 15 MM X 10M, BOX OF 12	BOX	1.66
26-877-00	TAPE ADHESIVE MASKING 25MM X 50M	ROLL	0.69
26-879-00	TAPE ADHESIVE MASKING 50MM X 50M	ROLL	1.32
26-945-00	TWINE COTTON DOUBLE TWISTED 4MM \$ BALL OF 500G	EACH	2.77
26-970-00	PAINT WATERCOLOURS BOX OF 12 COLOURS WITH BRUSH	SET	1.30

CODE GROUP 27 PHYSICAL EDUCATION MATERIALS USD

27-020-00	BADMINTON-SET WITH INSTRUCTIONS FOR 4 PLAYERS	SET	28.50
27-028-00	BALL SPONGE RUBBER APPROX 60-80MM DIAMETER	EACH	0.48
27-032-00	BASKETBALL JUNIOR SIZE	EACH	6.19
27-033-00	BASKETBALL PROFESSIONAL SIZE	EACH	4.23
27-034-00	BASKETBALL GOAL AND NET SET	SET	97.01
27-312-00	FOOTBALL ROUND PROFESSIONAL MODEL	EACH	4.64
27-312-10	FOOTBALL ROUND JUNIOR SIZE	EACH	8.12
27-370-00	HANDBALL SENIOR SIZE	EACH	10.09
27-370-10	HANDBALL JUNIOR SIZE	EACH	10.37
27-416-00	INFLATING-KIT FOR BALLS	KIT	1.39
27-665-00	ROPE TUG-OF-WAR 25 MM X 22.5 M POLYPROPYLENE	LGTH	15.32
27-837-00	STOPWATCH 30 MIN	EACH	34.84
27-950-00	TABLE-TENNIS/PING-PONG SET COMPLETE W/O TABLE	SET	25.86
27-957-00	VOLLEYBALL PROFESSIONAL MODEL	EACH	6.63
27-958-00	VOLLEYBALL-NET 9.5M X 1M W/O STANDARDS/POSTS	EACH	15.66
27-958-05	STANDARDS FOR VOLLEYBALL-NET 2795800 SET OF 2	PAIR	94.83
27-973-00	WHISTLE REFEREE'S	EACH	1.09

UNICEF WAREHOUSE PRICE LIST FOR 1 APRIL 1998 TO 30 JUNE 1998

CODE GROUP 30	GARDEN TOOLS AND IMPLEMENTS		USD
30-302-00	KNIFE GARDEN BUDDING AND GRAFTING	EACH	5.28
30-400-00	SAW PRUNING GRDEN STRAIGHT SINGLE-EDGD BLD 460MM	EACH	3.96
30-430-00	SHEARS PRUNING GARDEN ANVIL-TYPE 200MM	EACH	4.96
30-440-00	PUMP SEMI-ROTARY MANUAL FOR USE W/20-27MM HOSE	EACH	45.90
30-440-05	HOSE FOR HAND-PUMP 3044000 LENGTH OF 25M	LGTH	25.57
30-539-00	SHEARS GARDEN LOPPING 700MM	EACH	6.22
30-620-00	SPADE SQUARE-POINT BLADE OF 180X300MM	EACH	3.36
30-905-00	WIRE GALVANIZED 1.8MM DIAMETER 5 KG ROLL	EACH	9.30

CODE GROUP 38	EXPENDABLE COMPUTER SUPPLIES		USD
38-386-00	STORAGE BOX 5 1/4" DISKETTES - HOLDS 50	EACH	9.77
38-386-05	STORAGE BOX 3 1/2" DISKETTES - HOLDS 40	EACH	3.98
38-386-10	DISKETTE - 5-1/4" - PREFORMATTED DSDD BOX OF 10	BOX	6.08
38-386-20	DISKETTE - 5-1/4" - PREFORMATTED DSHD BOX OF 10	BOX	9.44
38-386-40	MICRODISKETTE 3-1/2" PREFORMATTED DSHD1.44MB	BOX	4.11
38-387-30	RIBBONS FOR EPSON LQ-1170 AND 1050 BOX/6	BOX	26.21
38-389-00	PAPER CONTINUOUS ONE PART 9-1/2" X 11"	BOX	22.20
38-389-10	PAPER CONTINUOUS ONE PART 14-7/8" X 11"	BOX	46.75
38-389-20	PAPER CONTINUOUS TWO PART 14-7/8" X 11"	BOX	47.36
38-389-30	PAPER CONTINUOUS TWO PART 9 1/2" X 11"	BOX	30.52
38-389-40	PAPER CONTINUOUS FOUR PART W/LOGO 9-1/2" X 11"	BOX	55.86
38-389-50	BOX FOR MAILING DISKETTE 5-1/4", REUSABLE	EACH	1.44

CODE GROUP 40	WORKSHOP TOOLS AND EQUIPMENT		USD
40-059-95	BAR CROW DIAMETER 32MM X 1.5M	EACH	9.00
40-060-00	BAR PRY - SET OF 2	PAIR	11.35
40-090-00	BIT AUGER WOODWORKING 1/4"	EACH	4.32
40-092-00	BIT AUGER WOODWORKING 1/2"	EACH	4.22
40-094-00	BIT AUGER WOODWORKING 3/4"	EACH	5.61
40-106-00	BIT DRILL TWIST HSS 1/16" TO 1/4" SET OF 13	SET	3.92
40-140-00	BLADE FOR COPING-SAW 4079600 160MM - SET OF 12	PKT	2.14
40-160-00	BRACE HAND 8-PT OPEN RATCHET 250MM SWEEP	EACH	7.21
40-172-00	BRADAWL 50MM BLADE BEECH HANDLE	EACH	1.18
40-185-00	BRUSH WIRE PARTS CLEANING 300MM LONG	EACH	1.04
40-221-00	CALIPERS OUTSIDE UNCALIBRATED FIRM-JOINT 200MM	EACH	10.09
40-239-00	CHISEL METAL COLD 10MM CUT X 130MM LONG	EACH	1.23
40-240-02	CHISEL METAL COLD 12.5MM CUT X 150MM LONG	EACH	1.28
40-242-00	CHISEL METAL COLD 22MM CUT X 215MM LONG	EACH	1.64
40-251-00	CHISEL WOODWORKING BEVEL EDGE 6MM	EACH	2.26
40-255-00	CHISEL WOODWORKING BEVEL EDGE 19MM	EACH	0.63
40-280-00	CLAMP C 76MM OPENING	EACH	1.35
40-282-00	CLAMP C 100MM OPENING	EACH	1.70
40-301-00	COMPASS WING 200MM LENGTH	EACH	5.05
40-350-00	CRAMP BAR (BAR CLAMP) 610MM	EACH	9.42
40-354-00	CUTTER GLASS WITH TUNGSTEN CARBIDE WHEEL	EACH	2.11
40-380-00	DRILL HAND DOUBLE-PINION 6.4MM CAPACITY	EACH	13.32
40-381-00	DRILL BREST TWO-SPEED 12.5MM CAPACITY	EACH	22.25
40-381-22	DRILL-PRESS BENCH MODEL 220V 50HZ	EACH	294.66

UNICEF WAREHOUSE PRICE LIST FOR 1 APRIL 1998 TO 30 JUNE 1998

40-388-00	EXTRACTOR BOLT/SCREW COMPLSTE SST IN CASE	EACH	58.15
40-390-00	FACE-SHIELD SAFETY (CHIPPING SCREEN)	EACH	2.94
40-412-00	FILE CABINET RASP HALF-ROUND REGULAR CUT 250MM	EACH	3.73
40-417-00	FILE FLAT MACHINISTS' BASTARD CUT 250MM	EACH	1.71
40-419-98	FILE FLAT MACHINISTS' SECOND CUT 150MM	EACH	1.09
40-420-00	FILE FLAT MACHINISTS' SMOOTH CUT 150MM	EACH	1.03
40-422-00	FILE HALF-ROUND MACHINISTS' BASTARD CUT 250MM	EACH	3.21
40-424-95	FILE HALF-ROUND MACHINIST'S BASTARD CUT 150MM	EACH	1.30
40-425-00	FILE HALF-ROUND MACHINISTS' SMOOTH CUT 200MM	EACH	2.61
40-428-00	FILE MILL REGULAR BASTARD CUT 250MM	EACH	3.07
40-436-00	FILE ROUND MACHINISTS' SECOND CUT 250MM	EACH	1.66
40-443-00	FILE SAW TRIANGULAR DOUBLE-ENDED 250MM	EACH	1.86
40-446-00	FILE SQUARE MACHINISTS' SECOND CUT 250MM	EACH	1.26
40-451-00	FILE SAW TRIANGULAR SLIM-TAPER 250MM	EACH	1.59
40-460-00	FILE-HANDLE 100MM	EACH	0.36
40-461-00	FILE - HANDLE 125MM	EACH	0.23
40-471-00	FLARING/BENDER/CUTTER BRITISH SIZES 9-PIECE SET	EACH	95.96
40-503-00	GAUGE MARKING & MORTICE 2-PIN	EACH	2.09
40-508-00	GOGGLES WELDER'S	EACH	4.45
40-535-00	GRINDER BENCH MANUAL	EACH	23.19
40-555-00	HAMMER BALL-PEIN HEAD OF 300-350G/11-12 OZ	EACH	2.06
40-565-30	HAMMER MASON'S CLUB 1.1KG/2.5LB HEAD	EACH	3.12
40-566-20	HAMMER FORGE CROSS-PEIN HEAD OF 1.8KG/4 LB	EACH	14.45
40-590-00	HAMMER PLASTIC-TIP HEAD OF 350G/12 OZ	EACH	6.12
40-590-85	HAMMER SETTING HEAD OF 350G/12 OZ	EACH	2.00
40-591-00	HAMMER SLEDGE DOUBLE-FACED HEAD OF 3KG/6 LB	EACH	7.11
40-605-00	HATCHET 700 G HEAD BENT HANDLE	EACH	2.07
40-609-00	HOSE AIR 7.6M LENGTH	LGTH	17.48
40-609-02	COUPLINGS FOR AIRHOSE	SET	12.05
40-625-10	LINE MASON'S 60M	EACH	1.28
40-636-00	LOCK (PADLOCK)	EACH	6.45
40-681-00	NAIL-SET (PUNCH) 3MM TIP	EACH	1.03
40-695-00	PENCIL CARPENTER'S FLAT PKT OF 12	PKT	1.68
40-701-00	PIPE-TONGS 175MM ADJUSTABLE	EACH	4.55
40-705-00	PLANE BLOCK 150MM LONG W/35MM CUTTER	EACH	2.26
40-740-00	PLIERS CHAIN NEEDLE NOSE 165MM LONG	EACH	6.01
40-743-00	PLIERS ELECTRICIAN'S 150MM	EACH	2.40
40-744-00	PLIERS FRONT-CUTTING 160MM	EACH	8.60
40-755-00	PLIERS ROUND-NOSE 125MM	EACH	2.85
40-765-00	PLIERS SLIP-JOINT SIDE-CUTTING 190MM	EACH	2.86
40-770-00	PUNCH AND CHISEL SET OF 12	EACH	26.95
40-773-00	PUNCH CENTRE 4.8MM TIP X9.5MM X 100MM	EACH	1.34
40-783-00	RULE 300MM/12" GRAD IN MM/INCHES STEEL	EACH	0.64
40-784-00	RULE 600MM/24" GRAD IN MM/INCHES STEEL	EACH	1.42
40-789-00	RULE 2M/6' GRAD IN MM/INCHES WOOD MULTIFOLD	EACH	0.61
40-796-00	SAW COPING 300MM LONG BLADE 165MM	EACH	5.38
40-802-98	SAW TENON 300MM	EACH	0.55
40-821-00	SCREWDRIVER, BLADE SIZE APPROX 100 X 3.5MM	EACH	1.06
40-822-00	SCREWDRIVER 150MM X 6.4MM	EACH	0.63
40-823-00	SCREWDRIVER 200MM X 8MM	EACH	0.65
40-824-00	SCREWDRIVER 250MM X 9.5MM	EACH	2.18
40-826-00	SCREWDRIVER 300MM X 11MM	EACH	1.08
40-830-00	SCREWDRIVER RATCHET OFFSET	EACH	5.71
40-833-00	SCREWDRIVER PHILLIPS-HEAD #1	EACH	1.21

UNICEF WAREHOUSE PRICE LIST FOR 1 APRIL 1998 TO 30 JUNE 1998

40-833-01	SCREWDRIVER PHILLIPS-HEAD #2	EACH	1.23
40-833-02	SCREWDRIVER PHILLIPS-HEAD #3	EACH	1.88
40-838-45	SHEARING-MACHINE BENCH MODEL 200MM BLADE MANUAL	EACH	72.27
40-840-00	SLIDING-BAR-HANDLE 1/2" SQ DRIVE 12" LONG	EACH	3.46
40-850-07	SNIPS TINNER'S AVIATION TYPE 250MM LONG	EACH	7.48
40-850-12	SNIPS TINNER'S "DUCK BILL" 200MM L 50MM CUT	EACH	2.61
40-850-17	SNIPS TINNER'S STRAIGHT BLADE 200MM L 80MM CUT	EACH	4.40
40-861-00	WRENCH SOCKET 1/2" DRIVE METRIC SIZES SET OF 15	EACH	24.28
40-861-10	WRENCH SOCKET METRIC MINIATURE SIZES SET OF 13	EACH	59.69
40-866-00	WRENCH SOCKET 1/2"DRIVE US DEEP SOCKET SET/11	EACH	74.22
40-866-22	SOLDERING-IRON STRAIGHT DIAMOND TIP 200W, 220V	EACH	26.00
40-866-26	SOLDERING-IRON SEMI-CHISEL TIP 300W 220V	EACH	27.89
40-870-00	SPOKESHAVE 250MM STRAIGHT BOTTOM 52MM ADJ CUTTER	EACH	1.67
40-879-00	SQUARE CARPENTER'S TRY/MITRE 200X200MM	EACH	1.26
40-879-10	SQUARE ENGINEER'S TRY 100MM	EACH	0.55
40-885-00	LETTERS METAL-STAMPING 4.8MM HIGH SET A-Z PLUS &	EACH	11.29
40-885-10	NUMBERS METAL-STAMPING 4.8MM HIGH SET 0-9	EACH	4.86
40-898-00	STONE SHARPENING OIL COMBINATION 200X50X25MM	EACH	1.72
40-905-00	TAP-STOCK-&-DIE-SET BSF SIZES 3/16" TO 1/2" HSS	EACH	91.18
40-907-00	TAP-STOCK-&-DIE SET CIRCULAR PATTERN METRIC HSS	EACH	63.15
40-909-05	TAP-STOCK-&-DIE-SET WHITWORTH SIZES 1/4"-1" HSS	EACH	234.94
40-918-86	TONGS BLACKSMITH'S UNIVERSAL 450MM	EACH	16.09
40-920-00	TOOL-BOX 3-DRAWER WITH TRAY 640X350X300MM STEEL	EACH	122.87
40-921-04	SCREWDRIVER, ELECTRIC, CORDLESS	SET	317.33
40-938-90	VICE CHAIN PIPE 6 TO 101MM CAPACITY	EACH	39.67
40-939-00	VICE HAND 50MM JAW	EACH	8.30
40-940-00	VICE WOODWORKING CONTINUOUS SCREW JAW WDRH 175MM	EACH	12.76
40-942-00	VICE MACHINIST SWIVEL BASE JAW WIDTH 100MM	EACH	15.02
40-942-10	VICE WOODWORKING BENCH JAW OPENING 100MM ALUM	EACH	11.45
40-942-60	VOLTAGE TESTER FOR UP TO 600 VOLTS	EACH	33.61
40-943-08	WELDING-&-CUTTING-SET GAS COMPLETE W/GOGGLES	EACH	295.50
40-946-00	WRENCH ADJUSTABLE ROUNDED HEAD 200MM	EACH	6.86
40-959-00	WRENCH TORQUE SENSORY TYPE 1/2" SQUARE DRIVE	EACH	27.88
40-970-00	WRENCH SET ALLEN INCH SIZES SET OF 9	EACH	2.00
40-970-10	WRENCH ALLEN METRIC SIZES SET OF 8	EACH	2.53
40-975-00	WRENCH BOX/RING US SIZES SET OF 4	EACH	5.57
40-976-00	WRENCH BOX OFF-SET US SIZES SET OF 6	EACH	34.09
40-981-20	WRENCH OPEN-END METRIC MIDGET SIZES SET OF 3	EACH	7.88

CODE GROUP 43	OFFICE SUPPLIES AND EQUIPMENT		USD
43-022-47	CUTTING MACHINE, PAPER, 35 X 23 CM, BLADE 35 CM	EACH	87.46
43-022-52	CUTTER PAPER 610X610MM BLADE LENGTH 550MM	EACH	118.15
43-212-61	CALCULATOR SCIENTIFIC SOLAR/LIGHT POWERED	EACH	12.53
43-212-62	CALCULATOR, BASIC, SOLAR/LIGHT POWERED	EACH	2.41
43-225-65	DUPLICATOR MODEL GESTETNER 4130 220V 50HZ	EACH	992.62
43-225-71	DUPLICATOR STENCIL GESTETNER 1045T HAND OPERATED	EACH	454.63
43-225-73	INK DUPLICATOR FOR RONEO ONLY BLACK	TUBE	8.97
43-231-45	FOLDER FILE MANILA TAG LEGAL SIZE BOX OF 100	BOX	6.31
43-241-55	INK DUPLICATOR FOR GESTETNER ONLY BLACK	TUBE	1.66
43-241-56	INK DUPLICATOR FOR GESTETNER ONLY BLUE	TUBE	8.19
43-241-57	INK DUPLICATOR FOR GESTETNER ONLY GREEN	TUBE	6.41
43-254-90	NUMBERING-MACHINE WITH 6-DIGIT WHEEL	EACH	25.89

UNICEF WAREHOUSE PRICE LIST FOR 1 APRIL 1998 TO 30 JUNE 1998

43-254-94	PAD, FLIPCHART, BOX OF 5 X 20 SHEETS	BOX	8.22
43-254-95	FLIPCHART/WHITEBOARD WITH PAD AND MARKERS	SET	54.79
43-254-97	MARKERS FOR FLIPCHART/WHITEBOARD SET/4	SET	0.84
43-255-00	PAD, WRITING, WHITE, RULED, A4, 100 SHEETS	EACH	0.42
43-255-07	PAPER PHOTOCOPYING/TYPEWRITER A3/297X420MM	REAM	5.38
43-256-08	PAPER PHOTOCOPYING/TYPEWRITER A4/210X297MM	REAM	2.72
43-256-09	PAPER CARBON TYPEWRITER BLACK 210X310MM BOX 100	BOX	2.88
43-256-10	PAPER DUPLICATING WHITE SIZE A4 210X297MM	REAM	2.17
43-256-16	PAPER WRITING CARTRIDGE WHITE 800X900MM PKT 250	PKT	24.45
43-256-18	PAPER THICK BOARD WHITE 300X450MM PKT 100 SHEETS	PKT	8.98
43-260-00	PUNCH PAPER TWO-HOLE ADJUSTABLE 70/80MM	EACH	3.55
43-284-14	STENCIL DUPLICATING FOOLSCAP WHITE BOX OF 50	BOX	4.43
43-284-18	STENCIL CORRECTION FLUID, 28ML BOTTLE	** BOTL	1.49
43-285-42	STYLUS FOR STENCIL BALL TIPPED	EACH	6.18
43-285-44	STYLUS FOR STENCIL WHEEL TYPE	EACH	5.14
43-286-01	STENCILS ELECTRONIC SHORT RUN BOX OF 100	BOX	17.84
43-286-03	STENCILS ELECTRONIC LONG RUN BOX OF 100	BOX	27.12
43-288-00	TYPEWRITER-MACHINE CHARACTERS A-2 & 0-9	EACH	51.47
43-288-02	TAPE-MAGAZINE ADH FOR 4328800 9.5MMX3.6M BLACK	ROLL	1.81
43-288-04	TAPE-MAGAZINE ADH FOR 4328800 9.5MMX3.6M BLUE	ROLL	1.66
43-288-06	TAPE-MAGAZINE ADH FOR 4328800 9.5MMX3.6M ORANGE	ROLL	1.45
43-289-00	STAPLER, LONG ARM, 250MM REACH WITH STAPLES	SET	19.50
43-289-02	STAPLER DESK/OFFICE TYPE W/BOX 5000 STAPLES	SET	3.44
43-289-04	STAPLES REPLENISHMENT BOX/5000	BOX	0.67
43-294-20	TYPEWRITER RIBBON FOR IBM 6703 AND BSI 101	EACH	1.78
43-294-30	TYPEWRITER LIFT-OFF CORRECTING TAPE	EACH	0.51
43-294-46	CORRECTION TAPE FOR TYPEWRITERS 4329440/42	EACH	0.38
43-294-52	TYPEWRITER RIBBON FOR XEROX 6001	EACH	1.95
43-294-53	TYPEWRITER LIFT-OFF CORRECTING TAPE	EACH	2.02
43-294-70	TYPEWRITER ARABIC STANDARD 35 CM CARRIAGE	EACH	302.82
43-294-75	TYPEWITER ARABIC STANDARD 49 CM CARRIAGE	EACH	241.66
43-294-80	TYPEWRITER, ENGLISH, PORTABLE, 340MM CARRIAGE	EACH	137.66
43-294-90	TYPEWRITER ENGLISH STANDARD 49 CM CARRIAGE	EACH	209.52
43-295-05	TYPEWRITER FRENCH STANDARD 490MM CARRIAGE	EACH	266.16
43-295-15	TYPEWRITER SPANISH STANDARD 350MM CARRIAGE	EACH	283.65
43-295-20	TYPEWRITER SPANISH STANDARD 490MM CARRIAGE	EACH	221.67
43-295-21	TYPEWRITER, ELECTRONIC, ENGLISH 100-240V 50-60HZ	EACH	521.52
43-295-22	TYPEWRITER RIBBON FOR IBM WHEELWRITER 1000	EACH	7.29
43-295-23	TYPEWRITER LIFT-OFF CORRECTING TAPE FOR IBM 1000	EACH	5.46
43-295-24	TYPEWRITER ELECTRONIC, FRENCH, 100-240V 50-60 HZ	EACH	508.25
43-295-50	TYPEWRITER-RIBBON FACIT-ROYAL-ADLER-OLYMP-UNDRWD	EACH	1.03

CODE GROUP 44 CLASSROOM EQUIPMENT AND SUPPLIES USD

44-100-01	BOOK EXERCISE A5 RULED 8MM LINES 48 PAGES	EACH	0.08
44-100-05	BOOK EXERCISE A5 RULED 5MM SQUARES 48 PAGES	EACH	0.08
44-100-06	BOOK EXERCISE A4 RULED 8MM LINES 96 PAGES	EACH	0.28
44-100-96	BOOK EXERCISE A4 RULED 5MM SQUARES 96 PAGES	EACH	0.28
44-163-95	CHALK ASSORTED VIVID COLOURS DUSTLESS 144 STICKS	BOX	1.67
44-164-00	CHALK WHITE DUSTLESS 144 STICKS	BOX	1.34
44-164-01	CHALK, WHITE, DUSTLESS, BOX/12 STICKS	BOX	0.20
44-165-00	CHALKBOARD/SLATE POLYPROPYLENE	EACH	0.95
44-165-01	CHALKBOARD/SLATE, HARD, A4 (210X297MM)	EACH	1.18

UNICEF WAREHOUSE PRICE LIST FOR 1 APRIL 1998 TO 30 JUNE 1998

44-165-03	CHALKBOARD-PANEL DOUBLE-SIDED HANGING 1160X760MM	EACH	11.67
44-165-12	T-SQUARE FOR CHALKBOARD USE 100 CM	EACH	3.59
44-172-10	CLOCK WALL WITH BATTERY	SET	6.36
44-172-20	CLOCK WALL DIAM 260MM BATTERY OPERATED	EACH	6.11
44-184-00	COMPASS BLACKBOARD LENGTH 400MM PLASTIC	EACH	2.52
44-320-00	GLUE CLASSROOM USE 140 ML	EACH	0.57
44-600-00	PEN BALL-POINT BLUE	EACH	0.04
44-600-01	PEN BALL-POINT RED	EACH	0.04
44-600-02	PEN BALL-POINT BLACK	EACH	0.04
44-600-20	PEN FELT-TIP MARKER INDELIBLE INK BLACK	EACH	0.47
44-605-00	PENCIL BLACK HB GRADE WITH ERASER TIP	EACH	0.07
44-607-00	PENCIL BLACK HB GRADE WITHOUT ERASER	EACH	0.05
44-610-00	PENCIL FOR SLATES	EACH	0.10
44-621-00	PROTRACTOR FOR CHALKBOARD USE	EACH	1.86
44-657-00	PAINT BLACKBOARD BLACK NON-FLAMMABLE	TIN	2.55
44-670-00	RULE 1M/39" FOR CHALKBOARD USE	EACH	2.41
44-745-00	SOLIDS/GEOMETRIC FORMS SET OF 14 PLASTIC	SET	20.38
44-919-00	TRIANGLE CHALK BOARD 30-60-90 DEGREES	EACH	1.80
44-919-04	TRIANGLE CHALKBOARD 45 DEGREES	EACH	1.92

CODE GROUP 45 DRAFTING AND SURVEYING MATERIALS USD

45-150-02	DRAWING-BOARD 600X820MM WOOD	EACH	16.04
45-160-00	DRAWING GEOMETRIC SET 6 PROFESSIONAL INSTRUMENTS	SET	18.40
45-165-00	DRAWING SET STUDENTS GEOMETRY	SET	0.68
45-200-00	ERASER MEDIUM HARD RUBBER 50 X 25 X 12 MM	EACH	0.06
45-201-05	ERASER STUDENTS SOFT 30 X 20 X 8 MM	EACH	0.02
45-300-00	INK INDIA DRAWING BLACK	BOTL	0.96
45-305-00	INK DRAWING WATERPROOF BOTTLE OF 28ML RED	BOTL	1.36
45-310-00	DRAWING PEN SET	SET	33.48
45-420-10	PAPER GRAPH SQUARED 21 X 28 CM PAD 50 SHEETS	EACH	1.88
45-440-00	PAPER TRACING 0.9M WIDE ROLL OF 46M	ROLL	20.07
45-501-00	PENCIL DRAWING H GRADE BLACK BOX OF 12	BOX	0.63
45-505-00	PENCIL DRAWING F GRADE BLACK SET OF 12	DOZN	2.24
45-520-00	PENCIL SHARPENER PLASTIC	EACH	0.04
45-700-05	RULE 300MM/12" GRAD MM & 1/16" PLASTIC - SET/10	SET	1.27
45-710-00	SCALES REDUCTION METRIC TRIANGULAR 300 MM	EACH	4.52
45-780-00	T-SQUARE PLASTIC 700 MM BLADE	EACH	11.87
45-800-00	THUMB-TACK/DRAWING-PIN HEAD \$ 13MM BOX OF 100	BOX	0.26
45-850-00	TRIANGLE/SET SQUARE PLASTIC 30-60-90 DEG	EACH	0.26
45-865-00	TRIANGLE/SET SQUARE PLASTIC 45-45-90 DEG	EACH	0.28

CODE GROUP 46 SCIENCE TEACHING MATERIALS USD

46-061-00	BALL-AND-RING-APPARATUS GRAVESANDE FOR PHYSICS	EACH	13.62
46-064-00	BATTERY CHARGER 2/6/12V 110/220V AC INPUT	EACH	68.87
46-206-00	CLIP CROCODILE 40MM LONG	EACH	0.31
46-210-00	CLOCK ALARM 125 MM DIAL	EACH	4.10
46-219-00	COMPASS MAGNETIC PLOTTING 16 MM DIAMETER DIAL	EACH	0.06
46-264-12	ELECTROMAGNETIC-STUDY-OUTFIT (GILLEY COILS)	EACH	40.13
46-320-05	HOLDER LENS METAL FOR 50MM DIAMETER LENS	EACH	1.09
46-450-26	LENS EQUI-CONVEX FOCAL LENGTH 250MM GLASS	EACH	2.55

UNICEF WAREHOUSE PRICE LIST FOR 1 APRIL 1998 TO 30 JUNE 1998
--

46-466-20	MAGNET BAR RECTANGULAR 60X15X5MM ALNICO SET OF 2	PAIR	5.07
46-470-00	MAGNIFYING GLASS 2X AND 4X	EACH	6.54
46-476-90	MIRROR PLAIN UNMOUNTED 150X150X3MM GLASS	EACH	1.11
46-480-00	MOTOR-KIT ELECTRIC 1.5 VOLT DC	EACH	3.38
46-874-01	THERMOMETER MAXIMUM/MINIMUM SIX'S-TYPE CENT	EACH	4.28
46-878-00	THERMOMETER WALL MODEL GRAD C & F 40X200MM	EACH	1.78

CODE GROUP 47	GEOGRAPHY - CHARTS AND MAPS	USD
---------------	-----------------------------	-----

47-475-00	WORLD PHYSICAL/POLITICAL WALL-MAP ENGLISH TEXT	EACH	40.34
-----------	--	------	-------

CODE GROUP 50	GENERAL AND MISCELLANEOUS ITEMS	USD
---------------	---------------------------------	-----

50-010-00	BAG HAND 230X360X610MM BLUE NYLON	EACH	6.56
50-010-05	PLASTIC CARRIER BAG, A4 W/PRINT & INTERLOCK/SEAL	EACH	0.26
50-035-00	BLANKET WOOL-BLEND INSTITUTIONAL 1.5X2M ADULT SZ	EACH	6.88
50-035-02	BLANKET COTTON 1.5 X 2M EMERGENCY USE	EACH	4.37
50-035-05	BLANKET WOOL-BLEND EMERGENCY 1.5X2M ADULT SIZE	EACH	4.36
50-055-00	CHAIR FOLDING STEEL	EACH	11.53
50-073-00	JERRYCAN, COLLAPSIBLE, POLYESTER	EACH	8.08
50-073-10	CONTAINER, COLLAPSIBLE, POLYETHYLENE, 10 LITRES	EACH	2.00
50-076-45	TOOL KIT FOR INDIA MARK II PUMP MAINTENANCE	KIT	89.63
50-100-10	COT FOLDING W/COTTON COVER, ADULT SIZE	EACH	58.18
50-100-85	HELMET MOTORCYCLIST'S SAFETY LARGE SIZE	EACH	35.31
50-101-00	HELMET, BALLISTIC RESISTANT, MEDIUM SIZE	EACH	180.43
50-102-90	FLASHLIGHT WITH BATTERIES	SET	4.75
50-103-00	FLASHLIGHT	EACH	3.22
50-280-00	LANTERN HURRICANE NON-PRESSURE KEROSENE 340ML	EACH	6.81
50-300-00	EMERGENCY FIELD KIT	KIT	1790.67
50-300-01	EMERGENCY TRAVEL KIT	KIT	321.46
50-350-10	CABLES & FITTINGS	SET	2273.49
50-350-23	SLING, LIFTING.2000KG,CONTINUOUS,POLY/NYLON 1.5M	EACH	47.92
50-700-10	ROPE ALL-PURPOSE & FOR TARPAULINS 5086010 220M	COIL	9.30
50-798-00	SCISSORS HEAVY-DUTY 210MM	EACH	3.14
50-850-00	TABLE FOLDING 105 CM L X 70 CM W X 74 CM H	EACH	34.79
50-860-05	TARPAULIN REINFORCED WITH ROPE	SET	242.27
50-860-10	TARPAULIN REINFORCED POLYETH 4X50M WITH EYELETS	ROLL	232.37
50-860-11	TARPAULIN, PLASTIC, REINFORCED	EACH	9.74
50-860-15	TENT POLE, SECTIONAL, 250 CM	EACH	7.97
50-860-20	TENT PEG.CROSS SHAPE, POLYCARBONATE, 30 CM	EACH	0.77
50-880-02	TENT FAMILY-SIZE ROUND 12 SQM	EACH	198.78
50-880-04	TENT HOUSE RIDGE TYPE WITH FLY SHEET 12 SQM	EACH	397.57
50-880-05	TENT 70 SQM	EACH	3154.06
50-880-12	TENT FOR FIELD SERVICES FRAME TYPE 16 SQM	EACH	839.95

CODE GROUP 51	GENERAL HARDWARE MATERIALS	USD
---------------	----------------------------	-----

51-354-00	GLUE LIQUID WATERPROOF 250ML	BOTL	0.63
51-380-00	HINGE BUTT ASSORTED BOX OF 1.8 KG	BOX	18.30
51-685-00	SANDPAPER ASSORTED GRAINS, PKT OF 10-12 SHEETS	PKT	1.67
51-695-01	SCREW WOOD 19MM NO 4 PKT OF 200	PKT	1.53
51-695-02	SCREW WOOD 19MM NO 6 PKT OF 200	PKT	0.44

UNICEF WAREHOUSE PRICE LIST FOR 1 APRIL 1998 TO 30 JUNE 1998

51-695-03	SCREW WOOD 32MM NO 8 PKT OF 200	PKT	2.65
51-695-04	SCREW WOOD 38MM NO 10 PKT OF 200	PKT	3.39
51-698-00	SOLDER (WIRE FORM) SPOOL OF 500G	SPL	2.47
51-698-03	SOLDER (PASTE FORM) TIN OF 113G	TIN	1.48
51-865-00	TAPE ADHESIVE ELECTRICAL-INSULATING 19MMX15-20M	ROLL	0.65

CODE GROUP 56 SANITATION EQUIPMENT AND SUPPLIES USD

56-199-02	FILTER WATER ALUMINIUM WITH 4 STERASYL CANDLES	EACH	49.05
56-750-00	TANK WATER COLLAPSIBLE 5000 LIT W/CARRYING BAG	EACH	526.81
56-750-25	COLLAPSIBLE WATER TANK, 1.5 CBM, C/W ACCESSORIES	SET	1154.74
56-750-52	STEEL, BASE PLATE, WATER TANK, 1M3, WITH ACCESS.	SET	1087.30
56-800-20	TRAILER MOUNTED WATER PURIFICATION UNIT	EACH	34799.94

CODE GROUP 80 AUTOMOTIVE SERVICE EQUIPMENT USD

80-025-00	AUTO-MECHANIC'S-TOOL-KIT WITHOUT WRENCHES	KIT	433.67
80-025-06	AUTO-MECHANIC'S-WRENCH-SET METRIC SIZES	SET	155.63
80-030-00	BAG CARRYING FOR TOOL-KIT 9927500 CANVAS	EACH	7.80
80-040-00	BATTERY-SERVICE-KIT COMPLETE WITH HYDROMETER	SET	25.47
80-047-00	BATTERY-TESTER WITH INDICATOR	EACH	57.32
80-157-02	CHARGER FOR 6 & 12V BATTERIES SLOW 220V 50/60HZ	EACH	458.50
80-425-05	JACK HYDRAULIC WHEELED CAPACITY 1850KG/2 TONS	EACH	179.80
80-603-10	PAINT-SPRAY-GUN	EACH	28.35
80-603-20	PRESSURE-REGULATOR FOR PAINT-SPRAY-GUN	SET	47.45
80-638-50	PLIERS LOCK-RING SET	SET	14.85
80-775-02	SANDER PORTABLE 220V 50HZ	EACH	227.00
80-909-75	TESTER MULTI-FUNCTION PORTABLE	EACH	44.41
80-921-00	TIRE-PRESSURE-GAUGE GRAD KG/LB	EACH	27.29
80-922-00	TYRE PUMP, FOOT OPERATED	EACH	18.26
80-923-00	TIRE-REPAIR-KIT FOR CARRYING IN VEHICLE	EACH	15.08
80-938-50	TIRE-VALVE-REPAIR-TOOL	EACH	3.05

CODE GROUP 87 FORMS AND ADMIN. SUPPLIES USD

87-000-11	KRAFT BROWN ENVELOPE 165X240(6.5X9.5) BOX/500	BOX	24.92
87-000-31	KRAFT BROWN ENVELOPE 250X330(10X13) BOX/500	BOX	33.24
87-000-51	KRAFT BROWN ENVELOPE 300X400(12X15.5)BOX250	BOX	29.00
87-000-71	AIR/MAIL ENVELOPE 112X220 BOX/500	BOX	13.67
87-000-91	WHITE BOND ENVELOPE 112X220 BOX/500	BOX	9.78
87-001-01	BAG, POUCH	EACH	10.92
87-001-02	CRIMPER, POUCH BAG SEAL	EACH	92.11
87-001-03	SEAL POUCH BAG - BAG/100	BAG	11.29
87-001-04	MANILA POUCH TAG - PKT./100	PKT	7.69
87-003-00	ROUTING SLIP (COM.6) PAD OF 100/SHEETS	EACH	0.94
87-008-00	AIRMAIL CONT. SHEET, PKT/500	PKT	15.61
87-020-00	BOND CONT. SHEET, PKT/500	PKT	9.11
87-021-00	LETTER HEAD, PKT/500	PKT	7.34
87-022-00	MEMO AIRMAIL, PKT/500	PKT	12.98
87-023-10	MEMO A4 BOND PKT/500	PKT	8.44
87-100-10	SHIPPING REPORT, UNICEF/1 REV 10, BOX/100	BOX	3.92
87-100-11	OUTTURN REPORT UNICEF/1 REV 10, BOX/100	BOX	3.06

UNICEF WAREHOUSE PRICE LIST FOR 1 APRIL 1998 TO 30 JUNE 1998

87-101-30	NOTICE OF LOSS/DAMAGE UNICEF/13 REV 1, BOX/50	BOX	3.40
87-101-70	INVI BID/AVIS D'APPEL D'OFFRES 17AS 84 F, PKT/100	PKT	22.29
87-101-71	INVI BID/LLAMADO A LICITACION 17 AS 84 S, PKT/100	PKT	9.00
87-101-72	INVITATION TO BID UNICEF 17E REV 5/88 PKT/100	PKT	12.70
87-104-10	EQUIP INVENTORY N-EXPEND ITEMS PT 41 E, PAD	EACH	7.77
87-104-30	PACKING LIST, UNICEF/43 REV. 3, PKT/100	PKT	74.00
87-108-30	DATA PROCESSING RECORD. UNICEF/83 REV 3, PKT/100	PKT	0.00
87-109-00	PROPERTY CONTROL UNICEF/90 REV 1 3/83, PKT OF 50	PKT	7.15
87-110-60	UN SPEC SERVICE AGEEM P 106 3/85 E, PKT/50	PKT	25.64
87-110-80	REFERRAL SHEET PT 108 1/66-A, PAD	EACH	13.26
87-114-10	UN CONTRACT INST/CORP CONT PT 141 6/83 E, PKT/50	PKT	23.09
87-114-11	CONT SHEET FOR PT 141, PT 141A 1/76, PKT OF 50	PKT	0.00
87-114-12	SUPPL DATA INST OR CORP CONTRACTOR PT141B PKT/50	PKT	4.84
87-119-60	REGISTER PROP. SURVEY BOARD UNICEF/196, PKT/50	PKT	5.23
87-120-00	PROP/CONTROL REC.CARDS UNICEF200(11-64)PKT10	PKT	0.55
87-124-70	EDP DOCUMENT INPUT UNICEF/247 REV 2 10/78, PKT/50	PKT	0.00
87-126-50	OFFICE VEHICLE QUESTIONNAIRE UNICEF/265, PKT/50	PKT	3.82
87-126-80	SUPPLY LIST UNICEF/268 REV5 BOX/50	BOX	0.00
87-126-90	SUPPLY CALL-FORWARD UNICEF/269 REV 5 BOX/50	BOX	0.00
87-127-20	SUPPLY LIST CONT.SHEET UNICEF/272 REV4 BOX/50	BOX	0.00
87-128-40	CONTINUATION SHEET BOX/100	BOX	69.23
87-129-70	UNICEF MAILGRAM UNICEF/297, BOX/100	BOX	26.08
87-130-40	SUPP & EQUIPM EVAL.REP UNICEF/304 REV 1, PKT/50	PKT	4.77
87-131-31	FIELD OFFICE P.O. UNICEF/313 REV.1 BOX/100	BOX	175.89
87-131-40	PURCHASE ORDER AMENDMENT UNICEF/314, BOX/100	BOX	99.83
87-131-41	PURCHASE ORDER AMDT UNICEF/314 REV 1 BOX/50	BOX	32.17
87-135-20	INVENTORY REP. NON-EXP. PROP. UNICEF 352 PKT/50	PKT	5.46
87-135-80	SUPPLY LIST - CALL FORWARD UNICEF/358, BOX/100	BOX	0.00
87-136-40	SPEC SERVICE AGREEM CONSULTANT UNICEF/364, BOX/50	BOX	17.33
87-138-80	COUNTRY PROGR.SUMM.SHEET.UNICEF 388 REV2 PKT/10	PKT	4.06
87-138-90	COUNTRY PROG SUM.CONT SH UNICEF/389 REV2 PKT/10	PKT	3.67
87-139-20	CASH CALL-FORWARD CCF UNICEF 392 REV1 PKT/100	PKT	0.00
87-140-40	PROGRAMME SUMMARY SHEET UNICEF 404 PKT/50	PKT	0.00
87-140-70	SUPPLY FORECAST FORM UNICEF 407 PKT/10	PKT	1.20
87-204-40	FIELD OFFICE DEPOSIT VOUCHER UNICEF/44A PKT/50	PKT	5.52
87-204-50	IMPREST CASH VOUCHER F.45(12-73) PAD	EACH	1.51
87-214-90	STATEMENT RECEIPT PAYMENTS/MONTH, UNICEF/149, PAD	EACH	0.00
87-215-20	ADVANCES RECOVER LOCAL UNICEF/152 REV 2, PAD	EACH	6.56
87-215-30	ADVANCES TO GOVERNMENTS UNICEF/153 REV 1, PKT/50	PKT	0.00
87-215-40	OFFICIAL UNICEF RECEIPT/CRV, UNICEF/154 BOX/100	BOX	5.22
87-215-60	BANK RECONCILIATION UNICEF/156, PAD	EACH	2.96
87-215-70	PETTY CASH PAYMENTS UNICEF/157, PAD	EACH	4.33
87-218-10	INTER-OFFICE VOUCHER UNICEF/181 REV 1, PAD	EACH	0.00
87-219-90	REMITTANCE TRANSMIT.NOTICE UNICEF199(9-86)PKT50	PKT	11.79
87-222-40	PAYMENT VOUCHER UNICEF/224 REV 6, PKT/100	PKT	0.00
87-223-40	ADVANCES GOVERNMENT CTRL REG. UNICEF/234, PKT/50	PKT	4.34
87-223-50	ADMINISTRATIVE DEPOSITS UNICEF/235, PKT/100	PKT	5.88
87-225-70	UNICEF PAYMENT REQUEST, UNICEF/257 REV 2, PKT/100	PKT	62.08
87-226-00	FIELD ACCOUNTS PAYMENT QUERIES UNICEF/260, PKT/50	PKT	5.08
87-228-70	WEEKLY FINANCIAL REPORTING UNICEF/287, PKT/100	PKT	0.00
87-235-90	STATEMENT PAYMENTS MONTH UNICEF/359, PAD	EACH	14.23
87-238-40	RECONCILIATION OF S.P.A SUBLEDGER UNICEF/384PAD	EACH	3.57
87-300-10	MEDICAL CLEARANCE CERTIF. MS 1 E, PKT/50	PKT	3.43
87-300-11	MIP ENROLMENT FORM MIP-1 PKT/25	PKT	3.01

UNICEF WAREHOUSE PRICE LIST FOR 1 APRIL 1998 TO 30 JUNE 1998

87-300-20	MEDICAL EXAMINATION MS 2 E, PKT/50	PKT	9.79
87-300-21	MED EXAM/EXAMEN MEDICO MS 2 1/85 S, PKT OF 50	PKT	7.64
87-300-22	UN MED EXAM/EXAMEN MEDICAL MS 2 1/85 F, PKT OF 50	PKT	12.80
87-300-23	MIP CLAIMS ENVELOPE MIP-2 PKT/50	PKT	4.95
87-300-30	MIP YEARLY REIMB REC MIP-3 PKT/25	PKT	3.03
87-300-60	PERIODIC HEALTH EXAM HISTORY MS 6 E, PKT/50	PKT	9.49
87-300-90	MIP-9 GUIDELINES MIP-9/87	EACH	4.76
87-301-70	NOTIFICATION REQ PRE MED EXAM P 17 E, PKT/50	PKT	1.32
87-302-40	SUBMISSION INFORMATION SICK LEAVE MS 24 E, PKT/50	PKT	3.44
87-302-50	VAN BREDA APP COVER/CHANGE COVER, PKT OF 10	PKT	0.00
87-302-51	J VAN BREDA & CO AFTER SERVICE PKT/10	PKT	0.00
87-302-55	VAN BREDA CLAIM REIMB EXPENSES, PKT OF 50	PKT	0.00
87-302-60	GHI CLAIM FORM PKG/50	PKT	8.16
87-302-70	AETNA STATEMENT OF CLAIM PKG/50	PKT	4.34
87-306-30	APPL.AFTER SERVICE HEALTH INS.F.63(9-84)PKT/10	PKT	3.33
87-342-70	REQUEST FOR UN MEDICAL CLEARANCE UNICEF 427/3/95	PKT	0.85
87-400-10	NOTE TO PARTICIPANTS PENS A/1 E, PKT/50	PKT	4.77
87-400-12	NOTICE ELECTION TO VALIDATE PENS B/1 E, PKT/50	PKT	4.93
87-400-14	NOTICE ELECTION TO RESTORE PENS C/1 E, PKT/50	PKT	0.00
87-400-20	DESIGNATION OF BENEFICIARY PENS A/2 E, PKT/50	PKT	3.94
87-400-22	INSTRUC.PAYM.BENEFITS(OISABIL.)PENS E/2 E,PKT/50	PKT	6.06
87-400-30	STATUS REPORT PENS A/3 E, PKT/50	PKT	2.77
87-400-40	STATUS LIST PENS A/4 E, PKT/50	PKT	5.32
87-400-42	UNJSPF SEPARATION NOTIFICATION PF4 PKT/50	PKT	2.84
87-400-60	INSTRUC.PAYM.BENEFITS SERV<5 Y PENS E/6 E,PKT/50	PKT	3.55
87-400-70	INSTRUC.PAYM.BENEFITS SERV>5Y PENS E/7 E, PKT/50	PKT	11.38
87-400-72	INSTRUC. VERSEM.PREST.>5A PENS E/7 F PQT/50	PKT	8.79
87-401-00	UNJSPF PROOF CTRY RES. PENS E/10 (1-85) PKT/50	PKT	4.80
87-410-80	REGULAR CONTRIB. UN JSPF UNICEF/108 REV 2,PKT/50	PKT	0.00
87-419-40	INFO PENSION FUND GS&NOS UNICEF/194 REV.2,PKT/50	PKT	0.00
87-450-00	INSURABIL.STA.AETNA LIFE, CAT 72747, PKT/10	PKT	0.00
87-450-01	AETNA STAFF REQUEST GROUP LIFE INSURANCE PKT/50	PKT	0.00
87-500-10	PERSONNEL INDUCTION QUEST. P 1 E, PKT/100	PKT	26.14
87-500-20	BENEFICIARY DESIGNATION CHANGE/REVO P 2 E,PKT/50	PKT	4.30
87-500-50	G4/G5 VISA STATUS P.T.5, PAD OF 100/SHEETS	EACH	4.30
87-500-80	TRAVEL AUTHORIZATION PT 8 E, PKT/100	PKT	24.36
87-501-00	VOUCHER REIMBURSEMENT EXPENSES, F-10 E, PAD	EACH	3.37
87-501-10	PERSONAL HISTORY P 11 E, PKT/50	PKT	8.80
87-501-11	PERSONAL HISTORY P 11 FR, PKT/50	PKT	15.85
87-503-40	OATH OF OFFICE P 34, PKT/25	PKT	2.86
87-503-50	PERSONNEL PAYROLL CLEARANCE,P 35 1/82 E, PKT/50	PKT	43.90
87-503-90	APP UN FAMILY CERTIF. PT 39 7/74-E/F, PKT OF 10	PKT	2.19
87-504-10	CERT.ATTENDANCE & COSTS P41 PKT/50	PKT	11.71
87-504-11	CERT. PRESCRIBED TEXTBOOKS P.41C PKT/50	PKT	18.78
87-504-12	CERT.TUITION OF MOTHER TONGUE P.41A5/86 PKT/50	PKT	18.53
87-504-51	REQUEST PAYMENT EDUC GRANT P 45 E REV 1 PKT/50	PKT	2.77
87-504-52	DEMANDE D'INDEMNITE FRAIS D'ETUDES P 45F PQT/50	PQT	2.69
87-504-80	AUTHORIZATION DEPOSIT CHEQUES F-48, PKT/50	PKT	7.71
87-506-30	REQ FOR CHANGE TO G4/G5 STATUS PT 63 E, PKT/10	PKT	0.00
87-506-40	APPLICATION UN CERTIFICATE PT 64 E, PKT/10	PKT	3.14
87-506-50	APPLICATION UN LAISSEZ-PASSER PT 65 E, PKT/10	PKT	4.58
87-506-60	REQUEST EDUC. GRANT TRAVEL P 66 E, PKT/50	PKT	22.68
87-506-61	ADVANCE REQUEST FOR VISAS PT 66 E, PKT/50	PKT	0.00
87-507-10	LEAVE REPORT, PAD	EACH	1.54

UNICEF WAREHOUSE PRICE LIST FOR 1 APRIL 1998 TO 30 JUNE 1998

87-507-80	INVENTORY HOUSEHOLD EFFECTS PT 78 E, PKT/50	PKT	6.07
87-508-20	REQUEST SALARY ADVANCE F-82 E, PAD	EACH	5.46
87-508-40	REQ. F/PAYMENT DEPENDENCY ALLOWANCE P.84 PKT/50	PKT	2.95
87-509-58	LETTER APP PERMANENT UNICEF/96 6/78 E, PKT OF 50	PKT	36.72
87-509-59	LETTER APP PERMANENT UNICEF 96B 6/79 E, PKT/50	PKT	9.31
87-509-60	LETTER APP PERMANENT UNICEF/96 8/80 E/F, PKT/50	PKT	8.72
87-509-61	LETTER APP PERMANENT UNICEF/96B 8/80 E/F, PKT/50	PKT	8.22
87-509-81	LETTER APP FIXED TERM UNICEF/98B 8/80 E/F,PKT/50	PKT	14.47
87-515-80	QUESTIONNAIRE PKG/50	PKT	0.00
87-516-30	PERSONNEL APP&SPEC SERV UNICEF/163 REV 2, PKT/50	PKT	7.27
87-516-40	FIELD ATTENDANCE REPORT UNICEF/164 REV 1, PKT/50	BOX	3.04
87-516-80	REQUEST PURCH OF VEHICLE UNICEF/168 REV 1,PKT/10	PKT	0.67
87-517-40	PERSONNEL ACTION UNICEF/174, PKT/100	PKT	21.00
87-517-60	MANNING TABLE AUTH UNICEF/176 REV 1 11/72,PKT/50	PKT	0.00
87-524-50	UNICEF TRAVEL REQUEST UNICEF/245, PKT/50	PKT	3.24
87-525-60	APP.RENTAL SUBSIDY&WSHT,UNICEF/256A REV2,PKT/50	PKT	5.34
87-530-30	GROUP LIFE INSURANCE UNICEF/303 PKT/50	PKT	4.48
87-530-80	REQ NEW POST/RECLASS. UNICEF 308 8/77, PKT OF 50	PKT	6.58
87-530-90	GEN.SERV.JOB DESCRIPTION UNICEF/309 REV 1 PKT/50	PKT	12.17
87-530-91	PROFF POST JOB DESCRIP. UNICEF/309 2A,PKT/50	PKT	22.71
87-531-50	CERTIF OF SCHOOL ATTENDANCE UNICEF/315, PKT/50	PKT	1.78
87-531-60	LETTER APP PROJECT PERS APP UNICEF/316, PKT/50	PKT	14.40
87-531-70	UN FEDERAL CREDIT UNION LOCAL FS UNICEF/317, PAD	EACH	2.79
87-531-80	LOCAL CURRENCY PAYROLL UNICEF/318, PAD	EACH	0.00
87-531-81	LOCAL CURR. PAYROLL 2.ND PG UNICEF/318A, PAD	EACH	0.00
87-532-20	LETTER TEMP APP SHORT-TERM UNICEF/322, PKT/50	PKT	10.95
87-533-40	CLAIM COMP LOSS/DAMAGE UNICEF/334, PKT/50	PKT	2.91
87-533-50	CLAIM COMP APP.D STAFF RULE UNICEF/335, PKT/50	PKT	0.00
87-536-20	UNICEF PERF EVAL REP UNICEF/362 REV 1 89 PKT/50	PKT	13.29
87-536-21	STEPS COMPLETING PERF EVAL REPORT 362A PKT/50	PKT	2.15
87-536-22	RAPPORT D'EVAL COMP PROFF UNICEF/362 F PQT/50	CHQ	0.00
87-536-24	INFORME EVAL. DEL DESEMPEÑO UNICEF/362 S PQT/50	EACH	0.00
87-536-25	ETAPAS LLENAR FORM DE EVAL. UNICEF/362A S PQT/50	CADA	0.00
87-536-80	UNICEF PERFORMANCE EVAL REPORT UNICEF/368,PKT/50	PKT	2.48
87-536-81	RAPPORT D'APPRECIATION UNICEF 368 REV 1 F PQT/50	PKT	0.00
87-536-82	INF. DE EVALUACION UNICEF 368 REV 1 S PQT/50	EACH	0.00
87-537-30	PERSONAL PROPERTY RECEIPT UNICEF/373(9-84)PAD/50	PAD	5.63
87-537-90	ATTENDANCE REPORT UNICEF/379 11/84, PKT OF 50	PKT	3.17
87-538-20	DRIVER'S DAILY LOG UNICEF/382(3-85),PKT/100	PKT	2.39
87-539-30	PROOF OF COUNTRY RESIDENCE UNICEF/393 PKT/10	PKT	0.00
87-539-40	SCHOOL ATTND/CHILD UNICEF 394(9-86) PKT/50	PKT	4.15
87-539-50	REQUEST REIMB FREIGHT PERS VEH UNICEF 395 PKT/10	PKT	2.18
87-807-00	DESK FLAG, UN	EACH	12.86
87-900-00	UN DESK FLAG (4 X 6')	EACH	0.76
87-900-01	FOOT, PLASTIC - FOR STOCKNOS. 8790000	EACH	0.28
87-901-00	UN FLAG WHITE ON BLUE NYLON INDOOR USE (3' X 5')	EACH	19.94
87-902-00	UN FLAG WHITE ON BLUE OUTDOOR DISPLAY (4'X6')	EACH	23.37
87-903-00	UN FLAG WHITE AND BLUE 152X229CM (5X7.5')	EACH	38.96
87-904-00	UN FLAG, 183x274 CM FOR OUTDOOR USE	EACH	35.32
87-907-00	UNICEF DESK FLAG SET	SET	11.19
87-911-00	UNICEF FLAG BLUE ON WHITE INDOOR USE (3' X 5')	EACH	21.19
87-912-00	UNICEF FLAG BLUE ON WHITE OUTDOOR USE (4' X 6')	EACH	24.05
87-912-10	UN CAR FLAG, FOR OFFICIAL UNICEF VEHICLES ONLY	EACH	13.02
87-913-00	UNICEF FLAG BLUE ON WHITE 152X229CM (5X7.5')	EACH	33.22

UNICEF WAREHOUSE PRICE LIST FOR 1 APRIL 1998 TO 30 JUNE 1998

87-920-00	FLAG POLE FOR CAR FLAG, ALUMINIUM, APPROX 60 CM	EACH	21.39
87-925-00	ANTI-THEFT DEVICE FOR VEHICLES	EACH	46.25
87-930-00	PATCH, UN CIRCULAR BLUE 75MM (1") DIAMETER	EACH	0.87
87-931-00	PATCH, UN RECTANGULAR (4" X 1")	EACH	1.67
87-932-00	PATCH, UNICEF SMALL RECTANGULAR (2.3 X 1.7")	EACH	0.26
87-933-00	PATCH, UNICEF RECTANGULAR (3.5" X 1.7")	EACH	0.29
87-934-00	PATCH, FIELD SERVICES BLUE AND GOLD (4" X 1")	EACH	2.64
87-940-00	BUTTONS, UN GOLD 15MM (5/8") DIAMETER	EACH	0.80
87-940-01	BUTTONS, UN, GOLD, NO. 36	EACH	1.83
87-940-02	BUTTONS, UN, GOLD, NO. 40	EACH	1.46
87-940-06	BUTTONS, UN, BLACK, NO. 24	EACH	0.46
87-940-07	BUTTONS, UN, BLACK, NO. 36	EACH	0.75
87-940-08	BUTTONS, UN, BLACK, NO. 40	EACH	0.83
87-941-00	CAP, BASEBALL, UN, LIGHT BLUE	EACH	2.78
87-941-01	BASEBALL CAP, COTTON, WHITE, WITH UNICEF'S LOGO	EACH	2.01
87-942-00	T-SHIRT, COTTON, WHITE, W/UNICEF LOGO, SIZE L	EACH	3.68
87-942-01	T-SHIRT, COTTON, WHITE, W/UNICEF'S LOGO, SIZE XL	EACH	3.48
87-943-00	SWEATSHIRT, COTTON, WHITE, W/UNICEF'S LOGO, L	EACH	10.74
87-943-01	SWEATSHIRT, COTTON, WHITE, W/UNICEF'S LOGO, XL	EACH	10.76
87-944-00	WINDBREAKER, NYLON, WHITE, W/UNICEF'S LOGO, L	EACH	26.23
87-944-01	WINDBREAKER, NYLON, WHITE, W/UNICEF'S LOGO, XL	EACH	25.22
87-945-00	BADGE, ROUND, METAL, WHITE, WITH UNICEF'S LOGO	EACH	0.40
87-946-00	ARMBAND, WHITE, WITH UNICEF'S LOGO	EACH	4.41

CODE GROUP 99 KITS USD

99-022-00	TBA-KIT WITH ALUMINIUM CASE	KIT	42.82
99-022-01	TBA KIT WITH VINYL BAG	KIT	33.57
99-022-10	AUXILIARY MIDWIFE KIT WITH ALUMINIUM CASE	KIT	84.48
99-022-11	AUXILIARY MIDWIFE KIT WITH VINYL BAG	KIT	75.24
99-022-15	PROF.MIDWIFE KIT WITH ALUMINIUM CASE	KIT	127.51
99-022-16	PROF. MIDWIFE KIT WITH VINYL BAG	KIT	118.27
99-024-01	MCH-A-CENTRE EQUIPT W/OPT (METRIC-CENT-LUER)	KIT	422.21
99-025-21	MCH-B-CENTRE-EQT (METRIC-CENT-PINARD STETH)+STVE	KIT	238.78
99-027-00	PHYSICIAN'S-KIT	KIT	231.79
99-030-01	PUBLIC-HEALTH-NURSE-KIT (CENT-ALUM CASE)	KIT	95.00
99-030-02	PUBLIC-HEALTH-NURSE-KIT (CENT-CANVAS BAG)	KIT	85.76
99-065-00	EMERGENCY HEALTH KIT-BASIC-	KIT	257.81
99-066-01	EMERGENCY HEALTH KIT - SUPPL.- I "DRUGS"	KIT	1703.51
99-066-02	EMERGENCY HEALTH KIT -SUPPL.-II "EQUIPMENT"	KIT	975.23
99-066-03	EMERG.HEALTH KIT-SUPPL.-III"RENEWABLE SUPPLIES"	KIT	728.03
99-070-00	SYRINGE KIT A	KIT	12.84
99-071-00	SYRINGE KIT B	KIT	22.89
99-080-00	STERILIZER KIT A	KIT	94.54
99-081-00	STERILIZER KIT B	KIT	113.45
99-350-00	TEACHER'S-SET	SET	22.70
99-350-05	CLASSROOM KIT FOR 40 STUDENTS	KIT	244.13
99-350-10	EDUCATION KIT, BASIC	KIT	1.86
99-350-15	"SCHOOL-IN-A-BAG" CLASSROOM KIT FOR 40 STUDENTS	KIT	100.94
99-500-25	IUD-INSERTION-KIT	KIT	81.45
99-500-35	IUD-INSERTION-KIT HEALTH-VISITOR/PARAMEDIC	KIT	99.09
99-500-50	TUBAL-LIGATION-KIT ABDOMINAL	KIT	98.45
99-500-75	VASECTOMY-KIT	KIT	71.70

UNICEF WAREHOUSE PRICE LIST FOR 1 APRIL 1998 TO 30 JUNE 1998

99-600-00	STERILIZATION-KIT FOR SURG INSTRUMENTS/DRESSINGS	KIT	318.07
99-620-00	SURGICAL-INSTRUMENT-KIT MAJOR	KIT	458.82
99-620-05	SURGICAL-INSTRUMENT-KIT MINOR	KIT	143.60
99-750-10	FIRST AID KIT	KIT	23.28
99-800-60	KITCHEN CROCKERY/LAUNDRY KIT	KIT	1173.99

(4) WHO Essential Drug リスト

List of Essential Drugs
by Therapeutic Categories

Prices shown in the alphabetical list pages

Stock no	Product	Dose Form	Strength	Unit	Size
1. ANAESTHETICS					
1.1 GENERAL ANAESTHETICS					
153 2305	ketamine (hydrochloride)	injection	50mg/ml	box	25x10ml vials
156 9600	thiopental (sodium salt)	pdr. for inj.	1g	box	25 vials
156 9550	thiopental (sodium salt) with diluent	pdr. for inj.	1g	set	50
1.2 LOCAL ANAESTHETICS					
155 5302	lidocaine (hydrochloride)	topical gel	2%	tube	30g
155 5205	lidocaine (hydrochloride)	injection	1%	box	5x50ml vials
155 5280	lidocaine (hydrochloride)	injection	2%	box	5x50ml vials
2. ANALGESICS, ANTIPYRETICS, NON-STEROIDAL, ANTI-INFLAMMATORY DRUGS AND DRUGS USED TO TREAT GOUT					
2.1 NON-OPIOIDS					
150 6000	acetylsalicylic acid	tablet	100mg	pack	100
150 6003	acetylsalicylic acid	tablet	300mg	pack	100
150 6002	acetylsalicylic acid	tablet	300mg	pack	1,000
150 6005	acetylsalicylic acid	tablet	500mg	pack	100
155 3000	ibuprofen	tablet	200mg	pack	100
155 5980	paracetamol	suppos.	100mg	box	100
155 5990	paracetamol	elixir	125mg/5ml	bottle	60ml
155 5975	paracetamol	tablet	100mg	pack	100
155 5978	paracetamol	tablet	100mg	pack	1,000
155 5965	paracetamol	tablet	500mg	pack	1,000
155 5968	probencid	tablet	500mg	pack	500
2.2 OPIOID ANALGESICS					
155 5970	pentazocine (as lactate)	injection	30mg/ml	box	10x1ml amp
3. ANTIALLERGICS AND DRUGS USED IN ANAPHYLAXIS					
153 4000	chlorphenamine (maleate)	tablet	4mg	pack	100
153 1700	chlorphenamine (maleate)	tablet	4mg	pack	1,000
150 1000	epinephrine (as hydrochloride)	injection	1mg/ml	box	10x 1ml amp
152 3005	dexamethasone (as sodium phosphate)	injection	4mg/ml	box	50x 1ml amp
155 2610	hydrocortisone (as sodium succinate)	pdr. for inj.	100mg	box	10 vials
155 2615	hydrocortisone (as sodium succinate with diluent)	pdr. for inj.	100mg	set	10

- when the strength is specified in terms of a selected salt or ester, this is mentioned in brackets;
when it refers to the active moiety, the name of the salt or ester in brackets is preceded by the word "as"

Stock no	Product	Dose Form	Strength	Unit	Size
----------	---------	-----------	----------	------	------

4. ANTIDOTES AND OTHER SUBSTANCES USED IN POISONINGS

151 4010	atropine (sulfate)	injection	1mg/ml	box	10x1ml amp
----------	--------------------	-----------	--------	-----	------------

5. ANTIEPILEPTICS

154 3625	diazepam	injection	5mg/ml	box	10x2ml amp
155 9310	phenobarbital	tablet	50mg	pack	100
155 9305	phenobarbital	tablet	100mg	pack	100

6. ANTIINFECTIVE DRUGS

6.1 ANTHELMINTICS

6.1.1 Intestinal anthelmintics

155 5355	mebendazole	tablet	100mg	pack	100
155 5360	mebendazole	tablet	500mg	pack	100
155 5885	nicosamide	chew.tab	500mg	pack	100

6.1.2 Antifilarials

154 3600	diethylcarbamazine (dihydrogen citrate)	tablet	50mg	pack	1,000
----------	---	--------	------	------	-------

6.1.3 Antichistosomal

156 0250	praziquantel	tablet	600mg	pack	100
156 0255	praziquantel	tablet	600mg	pack	1,000

6.2 ANTIBACTERIAL DRUGS

6.2.1 Penicillins

150 5040	amoxycillin	tab/cap	250mg	pack	1,000
150 5048	amoxycillin	tab/cap	500mg	pack	100
150 5045	amoxycillin	pdr. for oral susp	125mg/5ml	bottle	60ml
150 5097	ampicillin (as sodium salt) with diluent	pdr. for inj.	500mg	set	50
150 5098	ampicillin (as sodium salt)	pdr. for inj.	500mg	box	25 vials
155 8975	benzathine benzylpenicillin with diluent	pdr. for inj.	1.44g (2.4 MU)	set	50
155 9005	benzathine benzylpenicillin	pdr. for inj.	1.44g (2.4 MU)	box	50 vials
152 0005	benzylpenicillin (as sodium or potassium salt) with diluent	pdr. for inj.	3g (5 MU)	set	50
152 0011	benzylpenicillin (as sodium or potassium salt)	pdr. for inj.	3.0g (5 MU)	box	50 vials
155 7975	benzylpenicillin (as sodium or potassium salt) with diluent	pdr. for inj.	0.6g (1 MU)	set	50
155 7985	benzylpenicillin (as sodium or potassium salt)	pdr. for inj.	0.6g (1 MU)	box	50 vials

- when the strength is specified in terms of a selected salt or ester, this is mentioned in brackets;
when it refers to the active moiety, the name of the salt or ester in brackets is preceded by the word "as"

Stock no	Product	Dose Form	Strength	Unit	Size
153 7050	cloxacillin (as sodium salt)	capsule	500mg	pack	100
153 7300	cloxacillin (as sodium salt)	capsule	500mg	pack	500
153 7065	cloxacillin (as sodium salt)	pdr. for inj.	500mg	box	50 vials
153 7060	cloxacillin (as sodium salt) with diluent	pdr. for inj.	500mg	set	50
155 9050	phenoxymethylpenicillin (as potassium salt)	tablet	250mg	pack	100
155 9080	phenoxymethylpenicillin (as potassium salt)	tablet	250mg	pack	1,000
156 0676	procaine benzylpenicillin with diluent	pdr. for inj.	1g (1 MU)	set	50 vials
156 0678	procaine benzylpenicillin	pdr. for inj.	1g (1 MU)	box	50 vials
156 0681	procaine benzylpenicillin with diluent	pdr. for inj.	3g (3 MU)	set	10 vials
156 0682	procaine benzylpenicillin	pdr. for inj.	3g (3 MU)	box	10 vials
156 0684	procaine benzylpenicillin with diluent	pdr. for inj.	3g (3MU)	set	50 vials
156 0685	procaine benzylpenicillin	pdr. for inj.	3g (3MU)	box	50
6.2.2 Other antibacterial drugs					
153 1000	chloramphenicol	capsule	250mg	pack	1,000
153 1005	chloramphenicol (as sodium succinate) with diluent	pdr. for inj.	1g	set	10
153 1012	chloramphenicol (as palmitate)	pdr. for oral susp.	150mg/5ml	bottle	60ml
153 1015	chloramphenicol	capsule	250mg	pack	100
153 1030	chloramphenicol (as sodium succinate)	pdr. for inj.	1g	box	5 vials
154 4400	doxycycline (as hyclate)	tab/cap	100mg	pack	1,000
154 6300	erythromycin (as stearate or ethyl succinate)	pdr. for oral susp.	125mg/5ml	bottle	60ml
154 6315	erythromycin (as stearate or ethyl succinate)	tab/cap	250mg	pack	100
155 1954	gentamicin (as sulfate)	injection	10mg/ml	box	50x2ml amp
155 1960	gentamicin (as sulfate)	injection	40mg/ml	box	50x2ml amp
155 5630	metronidazole	tablet	250mg	pack	100
155 5650	metronidazole	tablet	250mg	pack	1,000
155 5690	metronidazole (as benzoate)	pdr. for oral susp.	200mg/5ml	bottle	100ml
154 3000	nalidixic acid	tablet	500mg	pack	1,000
153 7115	sulfamethoxazole + trimethoprim	tablet	100mg+20mg	pack	100
153 7110	sulfamethoxazole + trimethoprim	tablet	400mg+80mg	pack	100
153 7100	sulfamethoxazole + trimethoprim	tablet	400mg+80mg	pack	500
153 7130	sulfamethoxazole + trimethoprim	pdr. for oral susp.	200mg+40mg per 5ml	bottle	100ml
156 9010	tetracycline (hydrochloride)	tab/cap	250mg	pack	100
156 9000	tetracycline (hydrochloride)	tab/cap	250mg	pack	1,000
6.2.3 Antileprosy drugs					
	clofazimine	capsule	100mg	pack	100
	clofazimine	capsule	100mg	pack	1,000
	dapsone	tablet	50mg	pack	1,000

Stock no	Product	Dose Form	Strength	Unit	Size
	dapsone	tablet	100mg	pack	1,000
156 0700	rifampicin	tab/cap	150mg	pack	100
156 0710	rifampicin	tab/cap	300mg	pack	100
6.2.4 Antituberculosis drugs					
154 6400	ethambutol (hydrochloride)	tablet	400mg	pack	500
155 4000	isoniazid	tablet	100mg	pack	1,000
155 4001	isoniazid	tablet	300mg	pack	1,000
156 0150	pyrazinamide	tablet	500mg	pack	100
156 0700	rifampicin	tab/cap	150mg	pack	100
156 0710	rifampicin	tab/cap	300mg	pack	100
156 5005	streptomycin (as sulfate) with diluent	pdr. for inj.	1g	set	50
156 5010	streptomycin (as sulfate)	pdr. for inj.	1g	box	50 vials
155 4003	thioacetazone + isoniazid	tablet	50mg+100mg	pack	1,000
155 4100	thioacetazone + isoniazid	tablet	150mg+300mg	pack	1,000
6.3 ANTIFUNGAL DRUGS					
155 5910	nystatin	pessary	100,000 IU	pack	15
155 5925	nystatin	lozenge	100,000 IU	pack	1,000
155 5920	nystatin	tablet	500,000 IU	pack	100
6.4 ANTIPROTOZOAL DRUGS					
6.4.1 Antiamoebic drugs					
155 5630	metronidazole	tablet	250mg	pack	100
155 5650	metronidazole	tablet	250mg	pack	1,000
155 5690	metronidazole (as benzoate)	pdr. for oral susp.	200mg/5ml	bottle	100ml
6.4.3 Antimalarial drugs					
153 3975	chloroquine (as phosphate or sulfate)	syrup	50mg base/5ml	bottle	60ml
153 3985	chloroquine (as phosphate or sulfate)	syrup	50mg base/5ml	bottle	1 L
153 2002	chloroquine (as phosphate or sulfate)	tablet	100mg base	pack	1,000
153 3995	chloroquine (as phosphate or sulfate)	tablet	150mg base	pack	100
153 2000	chloroquine (as phosphate or sulfate)	tablet	150mg base	pack	1,000
156 0600	quinine (as dihydrochloride)	injection	300mg/ml	box	10x2ml amp
156 0610	quinine (as bisulfate or sulfate)	tablet	300mg	pack	100
156 8040	sulfadoxine + pyrimethamine	tablet	500mg+25mg	pack	100
156 8045	sulfadoxine + pyrimethamine	tablet	500mg+25mg	pack	1,000

7. BLOOD, DRUGS AFFECTING THE

7.1 ANTIANAEMIA DRUGS

155 0005	ferrous salt	tablet	60mg iron	pack	100
----------	--------------	--------	-----------	------	-----

- when the strength is specified in terms of a selected salt or ester, this is mentioned in brackets;
when it refers to the active moiety, the name of the salt or ester in brackets is preceded by the word "as"

Stock no	Product	Dose Form	Strength	Unit	Size
155 0000	ferrous salt	tablet	60mg iron	pack	1000
155 0010	ferrous salt + folic acid	tablet	60mg+0.25mg	pack	1,000
155 1000	folic acid	tablet	1mg	pack	1,000
155 1005	folic acid	tablet	5mg	pack	1,000

8. BLOOD PRODUCTS AND BLOOD SUBSTITUTES

8.1 PLASMA SUBSTITUTE

154 3200	dextran 70 in sodium chloride 0.9%	inj. soln	6%	set	500ml, with giving set
----------	------------------------------------	-----------	----	-----	------------------------

9. CARDIOVASCULAR DRUGS

9.1 ANTIANGINAL DRUGS

155 1500	glyceryl trinitrate	tablet	0.5mg	pack	100
----------	---------------------	--------	-------	------	-----

9.2 ANTIDYSRHYTHMIC DRUGS

156 0110	propranolol (hydrochloride)	tablet	40mg	pack	100
157 5000	verapamil (hydrochloride)	tablet	40mg	pack	1,000

9.3 ANTIHYPERTENSIVE DRUGS

155 2416	hydralazine (hydrochloride)	pdr. for inj.	20mg	box	5 amps
155 2415	hydralazine (hydrochloride) with diluent	pdr. for inj.	20mg	set	10
155 2400	hydrochlorothiazide	tablet	50mg	pack	1,000
155 2410	methyl dopa	tablet	250mg	pack	100

9.4 CARDIAC GLYCOSIDES

154 3720	digoxin	injection	0.25mg/ml	box	10x2ml amp
154 3705	digoxin	tablet	0.25mg	pack	100

10. DERMATOLOGICAL DRUGS

10.1 ANTIFUNGAL DRUGS

151 5020	benzoic acid + salicylic acid	oint/cream	6%+3%	tube	40g
151 5040	benzoic acid + salicylic acid	oint/cream	6%+3%	jar	500g
155 5900	nystatin	oint/cream	100,000 IU/g	tube	30g

10.2 ANTIINFECTIVE DRUGS

155 2002	gentian violet	powder		pack	25g
150 5120	neomycin + bacitracin	ointment	5mg+500 IU/g neomycin sulphate + bacitracin zinc	tube	20g

Stock no	Product	Dose Form	Strength	Unit	Size
10.3 ANTHINFLAMMATORY AND ANTIPRURITIC DRUGS					
152 3000	calamine	lotion	bottle	500ml	
155 2500	hydrocortisone (acetate)	oint/cream	1%	tube	15g
10.4 SCABICIDES AND PEDICULICIDES					
151 9500	benzyl benzoate saponated	lotion	25%	bottle	1 L
10.5 ULTRAVIOLET BLOCKING AGENTS					
155 2505	zinc oxide	oint/cream	10%	jar	500g
11. DISINFECTANTS AND ANTISEPTICS					
153 1510	chlorhexidine (digluconate)	conc.soln	5%	bottle	100ml
153 1505	chlorhexidine (digluconate)	conc.soln	5%	bottle	1 L
155 2002	gentian violet	powder		pack	25g
158 8000	water purification	tablet	tab for 1 L	pack	100
158 8005	water purification	tablet	tab for 5 L	pack	50
158 8200	water purification	powder	10g	pack	10x1g
155 3100	iodine	solution	2.5%	bottle	30ml
155 3105	povidone iodine	solution	10%	bottle	500ml
12. DIURETICS					
155 0525	furosemide	injection	10mg/ml	box	10x2ml amp
155 0500	furosemide	tablet	40mg	pack	1,000
155 0530	furosemide	tablet	40mg	pack	100
155 2400	hydrochlorothiazide	tablet	50mg	pack	1,000
13. GASTROINTESTINAL DRUGS					
13.1 ANTACIDS AND OTHER ANTIULCER DRUGS					
150 4000	aluminium hydroxide	tablet	500mg	pack	1,000
150 4100	aluminium hydroxide	tablet	500mg	pack	100
150 4002	aluminium hydroxide	oral susp.	320mg/5ml	bottle	500ml
153 6010	cimetidine	tablet	200mg	pack	100
13.2 ANTIEMETIC DRUGS					
155 9200	promethazine (hydrochloride)	tablet	25mg	pack	100
155 9205	promethazine (hydrochloride)	elix/syrup	5mg/5ml	bottle	250ml
155 9211	promethazine (hydrochloride)	injection	25mg/ml	box	10x2ml amp
13.3 ANTISPASMODIC DRUGS					
151 4020	atropine (sulfate)	tablet	1mg	pack	100

- when the strength is specified in terms of a selected salt or ester, this is mentioned in brackets;
when it refers to the active moiety, the name of the salt or ester in brackets is preceded by the word "as"

Stock no	Product	Dose Form	Strength	Unit	Size
151 4005	atropine (sulfate)	tablet	1mg	pack	1,000
13.4 CATHARTIC DRUGS					
156 3900	senna (sennosides)	tablet	7.5mg	pack	100
13.5 DIARRHOEA, DRUGS USED IN					
13.5.1 Oral rehydration					
156 1110	oral rehydration salts (ORS)	packet (to make 1L of solution)	sodium chloride 3.5g trisodium citrate 2.9g potassium chloride 1.5g glucose 20.0g	pack	100 (For set packing only)
156 1111	oral rehydration salts (ORS)	packet (to make 1L of solution)	sodium chloride 3.5g trisodium citrate 2.9g potassium chloride 1.5g glucose 20.g	pack	1000

14. HORMONES

14.1 ADRENAL HORMONES AND SYNTHETIC SUBSTITUTES

152 3005	dexamethasone (as sodium phosphate)	injection	4mg/ml	box	50x1ml amp
156 0310	prednisolone	tablet	5mg	pack	100
156 0300	prednisolone	tablet	5mg	pack	1,000
155 2605	hydrocortisone (as sodium succinate) with diluent	pdr. for inj.	100mg	set	10
155 2610	hydrocortisone (as sodium succinate)	pdr. for inj.	100mg	box	10 vials

15. IMMUNOLOGICALS

15.1 VACCINES

BCG vaccine (dried)	injection	20 infants doses	amp/vial	1
DTP vaccine	injection	20 doses	vial	1
DTP vaccine	injection	10 doses	vial	1
DT vaccine	injection	20 doses	vial	1
DT vaccine	injection	10 doses	vial	1
measles vaccine with diluent	injection	10 doses	vial	1
polio vaccine, live	oral solution	20 doses	vial/ dispenser	1
polio vaccine, live	oral solution	10 doses	vial/ dispenser	1
tetanus vaccine	injection	20 doses	vial	1
tetanus vaccine	injection	10 doses	vial	1

Stock no	Product	Dose Form	Strength	Unit	Size
----------	---------	-----------	----------	------	------

16. OPHTHALMOLOGICAL PREPARATIONS

16.1 ANTIINFECTIVE AGENTS

156 4055	silver nitrate	eye drops	1%	bottle	10ml
151 0000	tetracycline (hydrochloride)	eye oint.	1%	tube	5g
155 1970	gentamicin (as sulfate)	eye oint.	0.3%	tube	5g

17. OXYTOCICS AND ANTIOXYTOCICS

17. OXYTOCICS

154 5500	methylergometrine (maleate)	tablet	0.125mg	pack	30
154 5600	methylergometrine (maleate)	tablet	0.125mg	pack	100
154 5700	methylergometrine (maleate)	tablet	0.125mg	pack	500
154 5200	methylergometrine (maleate)	injection	0.2mg/ml	pack	10x 1ml amp

18. PSYCHOTHERAPEUTIC DRUGS

153 4950	chlorpromazine (hydrochloride)	injection	25mg/ml	box	10x2ml amp
153 5010	chlorpromazine (hydrochloride)	tablet	100mg	pack	100
154 3630	diazepam	tablet	5mg	pack	100

19. RESPIRATORY TRACT, DRUGS ACTING ON THE

19.1 ANTI-ASTHMATIC DRUGS

150 5015	aminophylline	injection	25mg/ml	box	10x10ml amp
150 5025	aminophylline	tablet	100mg	pack	1,000
150 5010	aminophylline	tablet	200mg	pack	100
151 1500	beclomethasone (dipropionate)	oral inhalation	0.05mg per dose	aerosol	1 200 doses
156 2020	salbutamol (as sulfate)	oral inhalation	0.1mg (per dose)	aerosol	1 200 doses
156 2015	salbutamol (as sulfate)	tablet	4mg	pack	1,000
156 2030	salbutamol (as sulfate)	tablet	4mg	pack	100
156 2040	salbutamol (as sulfate)	syrup	2mg/5ml	bottle	150ml

20. SOLUTIONS CORRECTING WATER, ELECTROLYTE AND ACID-BASE DISTURBANCES

20.1 ORAL

156 1110	oral rehydration salts (ORS)	packet	sodium chloride 3.5g trisodium citrate 2.9g potassium chloride 1.5g	pack	100 (For set packing only)
----------	------------------------------	--------	---	------	-------------------------------

- when the strength is specified in terms of a selected salt or ester, this is mentioned in brackets;
when it refers to the active moiety, the name of the salt or ester in brackets is preceded by the word "as"

Stock no	Product	Dose Form	Strength	Unit	Size
156 1111	oral rehydration salts (ORS)	packet	glucose 20.0g Ditto	pack	1,000
20.2 PARENTAL					
156 0800	sodium lactate comp.	inj. soln.	500ml	set	500ml with giving set
155 2100	glucose isotonic	inj. soln.	500ml	set	500ml with giving set
155 2110	glucose hypertonic	inj. soln	50%	box	10x10ml vial
155 2115	glucose hypertonic	inj. soln	50%	box	20x50ml vial
156 4300	sodium bicarbonae isotonic	inj. soln	1.4%	vial	50ml
156 4320	sodium chloride isotonic	inj. soln	0.9%	set	500ml with giving set
20.3 MISCELLANEOUS					
154 3801	water for injection	injection	2ml	box	50x2ml
154 3815	water for injection	injection	5ml	box	10x5ml
154 3803	water for injection	injection	5ml	box	50x5ml
154 3805	water for injection	injection	10ml	box	50x10ml

21. VITAMINS AND MINERALS

151 1000	ascorbic acid	tablet	50mg	pack	100
158 0000	ascorbic acid	tablet	50mg	pack	1,000
158 0005	ascorbic acid	tablet	250mg	pack	1,000
154 4985	ergocalciferol	tab/cap	1.25mg (50,000 IU)	pack	100
151 0500	iodized oil	capsule	200mg	pack	1,500
156 0185	pyridoxine	tablet	25mg	pack	100
158 3005	retinol (vit. A)	soft cap	60mg (200,000 IU)	pack	100
158 3000	retinol (vit. A)	soft cap	60mg (200,000 IU)	pack	500
158 3015	retinol (vit. A)	soft cap	30mg (100,000 IU)	pack	500
157 2010	thiamine (hydrochloride)	tablet	50mg	pack	100

Summary

The physical devastation that accompanies a flood is enormous. But as the flood waters recede, there may be more threats to your personal health and safety. By taking some basic precautions, you can help prevent many injuries as well as the possibility of some diseases.

In the midst of all this water, remember that heat or cold can play a major role in your personal health. Drink plenty of fluids, avoid caffeine, and do not wait to get thirsty. When possible, take a break, being careful not to get any more exhausted than you already may be. Do not add weather-related health problems like heat stress or hypothermia to your other problems.

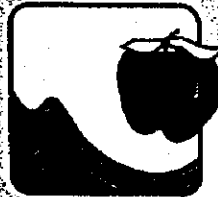
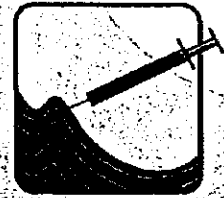
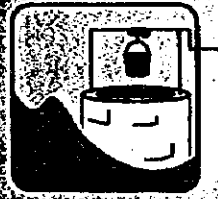
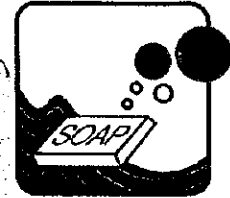
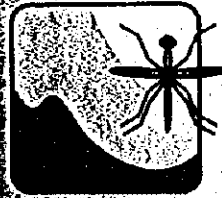
The weeks after a flood are going to be rough. In addition to your physical health, you need to take some time to consider your mental health as well. Remember that some sleeplessness, anxiety, anger, hyperactivity, mild depression, or lethargy are normal, and may go away with time. If you feel any of these symptoms acutely, seek some counseling. Your state and local health departments will help you find the local resources, including hospitals or health care providers, that you may need.

In addition to the information provided in this pamphlet, local and state health departments or emergency management agencies may issue health advisories particular to your location. For more information, contact your local or state health departments.

CDC
CENTERS FOR DISEASE CONTROL
AND PREVENTION

Flood

A Prevention Guide to Promote Your Personal Health and Safety



U.S. DEPARTMENT OF HEALTH & HUMAN SERVICES
Public Health Service

CDC
CENTERS FOR DISEASE CONTROL
AND PREVENTION

Stock no	Product	Dose Form	Strength	Unit	Size
156 4111	oral rehydration salts (ORS)	packet	glucose 20.0g Ditto	pack	1,000
20.2 PARENTAL					
156 0800	sodium lactate comp.	inj. soln.	500ml	set	500ml with giving set
155 2100	glucose isotonic	inj. soln.	500ml	set	500ml with giving set
155 2110	glucose hypertonic	inj. soln	50%	box	10x10ml vial
155 2115	glucose hypertonic	inj. soln	50%	box	20x50ml vial
156 4300	sodium bicarbonate isotonic	inj. soln	1.4%	vial	50ml
156 4320	sodium chloride isotonic	inj. soln	0.9%	set	500ml with giving set
20.3 MISCELLANEOUS					
154 3801	water for injection	injection	2ml	box	50x2ml
154 3815	water for injection	injection	5ml	box	10x5ml
154 3803	water for injection	injection	5ml	box	50x5ml
154 2805	water for injection	injection	10ml	box	50x10ml

21. VITAMINS AND MINERALS

151 1000	ascorbic acid	tablet	50mg	pack	100
158 0000	ascorbic acid	tablet	50mg	pack	1,000
158 0005	ascorbic acid	tablet	250mg	pack	1,000
154 4985	ergocalciferol	tab/cap	1.25mg (50,000 IU)	pack	100
151 0500	iodized oil	capsule	200mg	pack	1,500
156 0185	pyridoxine	tablet	25mg	pack	100
158 3005	retinol (vit. A)	soft cap	60mg (200,000 IU)	pack	100
158 3000	retinol (vit. A)	soft cap	60mg (200,000 IU)	pack	500
158 3015	retinol (vit. A)	soft cap	30mg (100,000 IU)	pack	500
157 2010	thiamine (hydrochloride)	tablet	50mg	pack	100

Summary

The physical devastation that accompanies a flood is enormous. But as the flood waters recede, there may be more threats to your personal health and safety. By taking some basic precautions, you can help prevent many injuries as well as the possibility of some diseases.

In the midst of all this water, remember that heat or cold can play a major role in your personal health. Drink plenty of fluids, avoid caffeine, and do not wait to get thirsty. When possible, take a break, being careful not to get any more exhausted than you already may be. Do not add weather-related health problems like heat stress or hypothermia to your other problems.

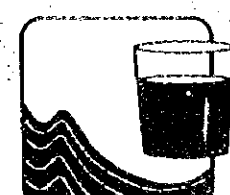
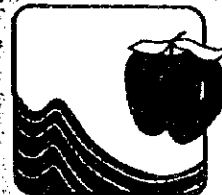
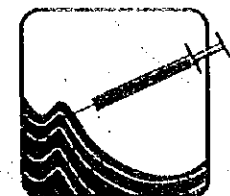
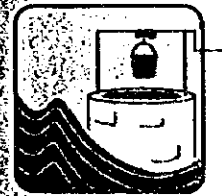
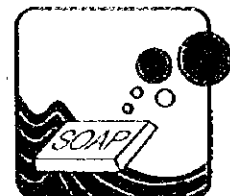
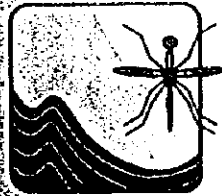
The weeks after a flood are going to be rough. In addition to your physical health, you need to take some time to consider your mental health as well. Remember that some sleeplessness, anxiety, anger, hyperactivity, mild depression, or lethargy are normal, and may go away with time. If you feel any of these symptoms acutely, seek some counseling. Your state and local health departments will help you find the local resources, including hospitals or health care providers, that you may need.

In addition to the information provided in this pamphlet, local and state health departments or emergency management agencies may issue health advisories particular to your location. For more information, contact your local or state health departments.

CDC
CENTERS FOR DISEASE CONTROL
AND PREVENTION

Flood

A Prevention Guide to Promote Your Personal Health and Safety



U.S. DEPARTMENT OF HEALTH & HUMAN SERVICES
Public Health Service

CDC
CENTERS FOR DISEASE CONTROL
AND PREVENTION

Flood

A Prevention Guide to Promote Your Personal Health and Safety

After a flood, the physical devastation to a community is obvious. But during the flood and its aftermath, there are some basic facts to remember that will help protect your personal health and safety. This pamphlet provides information that will help you and other flood victims prevent disease and injury and maintain good health in the days and weeks following a flood.

This information is provided by the Centers for Disease Control and Prevention (CDC) through state and local health departments. It includes general disease and injury prevention guidelines that may vary slightly from state to state. If in doubt, contact your local or state health departments, which will issue health advisories or recommendations particular to local conditions.

2



Water Quality

Listen for public announcements on the safety of the municipal water supply. Flooded, private water wells will need to be tested and disinfected after flood waters recede. Questions about testing should be directed to your local or state health departments.

Water for Drinking and Cooking

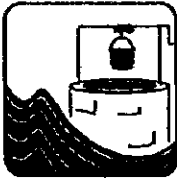
Safe drinking water includes bottled, boiled, or treated water. Your state or local health department can make specific recommendations for boiling or treating drinking water in your area. Here are some general rules concerning water for drinking and cooking.

Remember:

- Do not use contaminated water to wash dishes, brush your teeth, wash and prepare food, or make ice.
- If you use bottled water know where it came from. Otherwise, water should be boiled or treated before use. Drink only bottled, boiled, or treated water until your supply is tested and found safe.
- Boiling water kills harmful bacteria and parasites. Bringing water to a rolling boil for 1 minute will kill most organisms.
- Water may be treated with chlorine or iodine tablets, or by mixing six drops (1/8 teaspoon) of unscented, ordinary household chlorine bleach (5.25 percent sodium hypochlorite) per gallon of water. Mix the solution thoroughly, and let stand for about thirty minutes. However, this treatment will not kill parasitic organisms.

Containers for water should be rinsed with a bleach solution before reusing them. Use water storage tanks and other types of containers with caution. For example, fire truck storage tanks, as well as previously used cans or bottles may be contaminated with microbes or chemicals. Do not rely on untested devices for decontaminating water.

3



Disinfecting Wells

If you suspect that your well may be contaminated, contact your local or state health department or agriculture extension agent for specific advice. Here are some general instructions for disinfecting wells.

To Disinfect Bored or Dug Wells

1. Use Table 1 to calculate how much bleach (liquid or granules) to use.
2. To determine the exact amount to use, multiply the amount of disinfectant needed (according to the diameter of the well) by the depth of the well. For example, a well 5 feet in diameter requires 4 1/2 cups of bleach per foot of water. If the well is 30 feet deep, multiply 4 1/2 by 30 to determine the total cups of bleach required (4 1/2 X 30 = 135 cups). There are sixteen cups in each gallon of liquid bleach.
3. Add this total amount of disinfectant to about 10 gallons of water. Splash the mixture around the wall or lining of the well. Be certain the disinfectant solution contacts all parts of the well.
4. Seal the well top.
5. Open all faucets and pump water until a strong odor of bleach is noticeable at each faucet. Then stop the pump and allow the solution to remain in the well overnight.
6. The next day, operate the pump by turning on all faucets, continuing until the chlorine odor disappears. Adjust the flow of water faucets or fixtures that discharge to septic systems to a low flow to avoid overloading the disposal system.

Table 1. Bleach for a Bored or Dug Well

Diameter of well (in feet)	Amount of 5.25% laundry bleach per foot of water	Amount of 70% chlorine granules per foot of water
3	1 1/2 cups	1 ounce
4	3 cups	2 ounces
5	4 1/2 cups	3 ounces
6	6 cups	4 ounces
7	9 cups	6 ounces
8	12 cups	8 ounces
10	18 cups	12 ounces

Source: Illinois Department of Public Health.
Recommendations may vary from state to state.

To Disinfect Drilled Wells

1. Determine the amount of water in the well by multiplying the gallons per foot by the depth of the well in feet. For example, a well with a 6-inch diameter contains 1.5 gallons of water per foot. If the well is 120 feet deep, multiply 1.5 by 120 (1.5 X 120 = 180).
2. For each 100 gallons of water in the well, use the amount of chlorine (liquid or granules) indicated in Table 2. Mix the total amount of liquid or granules with about 10 gallons of water.
3. Pour the solution into the top of the well before the seal is installed.
4. Connect a hose from a faucet on the discharge side of the pressure tank to the well casing top. Start the pump. Spray the water back into the well and wash the sides of the casing for at least 15 minutes.
5. Open every faucet in the system and let the water run until the smell of chlorine can be detected. Then close all the faucets and seal the top of the well.
6. Let stand for several hours, preferably overnight.
7. After you have let the water stand, operate the pump by turning on all faucets, continuing until all odor of chlorine disappears. Adjust the flow of water from faucets or fixtures that discharge into septic tank systems to a low flow to avoid overloading the disposal system.

Table 2. Bleach for a Drilled Well

Diameter of Well (in inches)	Gallons per foot of water
3	.37
4	.65
5	1.0
6	1.5
8	2.6
10	4.1
12	6.0

Amount of Disinfectant Required for each 100 gallons of water

Laundry Bleach (5.25% Chlorine) 3 cups*
Hypochlorite Granules (70% Chlorine) 2 ounces**

*1 cup = 8-ounce measuring cup

**1 ounce = 2 heaping tablespoons of granules

Source: Illinois Department of Public Health.
Recommendations may vary from state to state.



Food Safety

Do not eat any food that may have come into contact with flood water. Discard any food without a waterproof container if there is any chance that it has come into contact with flood water. Undamaged, commercially canned foods can be saved if you remove the can labels, thoroughly wash the cans, and then disinfect them with a solution consisting of one cup of bleach in 5 gallons of water. Relabel your cans, including expiration date, with a marker. Food containers with screw-caps, snap-lids, crimped caps (soda pop bottles), twist caps, flip tops, and home canned foods should be discarded if they have come into contact with flood water because they cannot be disinfected. For infants, use only pre-prepared canned baby formula that requires no added water, rather than powdered formulas prepared with treated water.

Frozen and Refrigerated Foods

If your refrigerator or freezer may be without power for a long period:

- Divide your frozen foods among friends' freezers if they have electricity;
- Seek freezer space in a store, church, school, or commercial freezer that has electrical service; or
- Use dry ice — 25 pounds of dry ice will keep a 10-cubic-foot freezer below freezing for 3-4 days. (Exercise care when handling dry ice, because it freezes everything it touches. Wear dry, heavy gloves to avoid injury.)

Thawed food can usually be eaten or refrozen if it is still "refrigerator cold," or if it still contains ice crystals. To be safe, remember, "When in doubt, throw it out." Discard any food that has been at room temperature for two hours or more, and any food that has an unusual odor, color, or texture.

6

Your refrigerator will keep foods cool for about 4 hours without power if it is unopened. Add block or dry ice to your refrigerator if the electricity will be off longer than 4 hours.

Sanitation and Hygiene



It is critical for you to remember to practice basic hygiene during the emergency period. Always wash your hands with soap and water that has been boiled or disinfected:

- before preparing or eating food;
- after toilet use;
- after participating in flood cleanup activities; and
- after handling articles contaminated with flood water or sewage.

Flood waters may contain fecal material from overflowing sewage systems, and agricultural and industrial byproducts. Although skin contact with flood water does not, by itself, pose a serious health risk, there is some risk of disease from eating or drinking anything contaminated with flood water. If you have any open cuts or sores that will be exposed to flood water, keep them as clean as possible by washing well with soap to control infection. If a wound develops redness, swelling, or drainage, seek immediate medical attention.

In addition, parents need to help children avoid water-borne illness. Do not allow children to play in flood water areas, wash children's hands frequently (always before meals), and do not allow children to play with flood-water contaminated toys that have not been disinfected. You can disinfect toys using a solution of one cup of bleach in 5 gallons of water.

7

Precautions When Returning to Your Home

Electrical power and natural gas or propane tanks should be shut off to avoid fire, electrocution, or explosions. Try to return to your home during the daytime so that you do not have to use any lights.



Use battery-powered flashlights and lanterns, rather than candles, gas lanterns, or torches. If you smell gas or suspect a leak, turn off the main gas valve, open all windows, and leave the house immediately. Notify the gas company or the police or fire departments or State Fire Marshal's office, and do not turn on the lights or do anything that could cause a spark. Do not return to the house until you are told it is safe to do so.

Your electrical system may also be damaged. If you see frayed wiring or sparks, or if there is an odor of something burning but no visible fire, you should immediately shut off the electrical system at the circuit breaker.

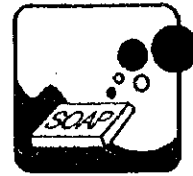
Avoid any downed power lines, particularly those in water. Avoid wading in standing water, which also may contain glass or metal fragments.

You should consult your utility company about using electrical equipment, including power generators. Be aware that it is against the law and a violation of electrical codes to connect generators to your home's electrical circuits without the approved, automatic-interrupt devices. If a generator is on line when electrical service is restored, it can become a major fire hazard. In addition, the improper connection of a generator to your home's electrical circuits may endanger line workers helping to restore power in your area. All electrical equipment and appliances must be completely dry before returning them to service. It is advisable to have a certified electrician check these items if there is any question. Also, remember not to operate any gas-powered equipment indoors.

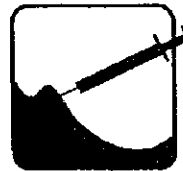
8

Cleanup

Walls, hard-surfaced floors, and many other household surfaces should be cleaned with soap and water and disinfected with a solution of 1 cup of bleach to five gallons of water. Be particularly careful to thoroughly disinfect surfaces that may come in contact with food, such as counter tops, pantry shelves, refrigerators, etc. Areas where small children play should also be carefully cleaned. Wash all linens and clothing in hot water, or dry clean them. For items that cannot be washed or dry cleaned, such as mattresses and upholstered furniture, air dry them in the sun and then spray them thoroughly with a disinfectant. Steam clean all carpeting. If there has been a backflow of sewage into the house, wear rubber boots and waterproof gloves during cleanup. Remove and discard contaminated household materials that cannot be disinfected, such as wallcoverings, cloth, rugs, and drywall.



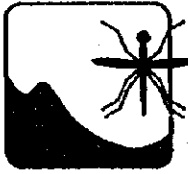
Immunizations



Outbreaks of communicable diseases after floods are unusual. However, the rates of diseases that were present before a flood may increase because of decreased sanitation or overcrowding among displaced persons. Increases in infectious diseases that were not present in the community before the flood are not usually a problem. If you receive a puncture wound or a wound contaminated with feces, soil, or saliva, have a doctor or health department determine whether a tetanus booster is necessary based on individual records.

Specific recommendations for vaccinations should be made on a case-by-case basis, or as determined by local and state health departments.

9



Mosquitoes

The large amount of pooled water remaining after the flood will lead to an increase in mosquito populations. Mosquitoes are most active at sunrise and sunset. The majority of these mosquitoes will be pests, but will not carry communicable diseases. Local, state, and federal public health authorities will be actively working to control the spread of any mosquito-borne diseases.

To protect yourself from mosquitoes, use screens on dwellings, and wear long-sleeved and long-legged clothing. Insect repellents containing DEET are very effective. Be sure to read all instructions before using DEET. Care must be taken when using DEET on small children. Products containing DEET are available from retail outlets and through local and state health departments.

To control mosquito populations, drain all standing water left in containers around your home.

Other Hazards

Swiftly Flowing Water

If you enter swiftly flowing water, you risk drowning—regardless of your ability to swim. Swiftly moving shallow water can be deadly, and even shallow standing water can be dangerous for small children. Cars or other vehicles do not provide adequate protection from flood waters. Cars can be swept away or may break down in moving water.



Animals

Many wild animals have been forced from their natural habitats by flooding, and many domestic animals are also without homes after the flood. Take care to avoid these

animals, because some may carry rabies. Remember, most animals are disoriented and displaced, too. Do not corner an animal. If an animal must be removed, contact your local animal control authorities. Your local and state health department can provide information about the types of wild animals that carry rabies in your area.

Rats may be a problem during and after a flood. Take care to secure all food supplies, and remove any animal carcasses in the vicinity by contacting your local animal control authorities.

If you are bitten by any animal, seek immediate medical attention. If you are bitten by a snake, first try to accurately identify the type of snake so that, if poisonous, the correct anti-venom may be administered.

Chemical Hazards

Use extreme caution when returning to your area after a flood. Be aware of potential chemical hazards you may encounter during flood recovery. Flood waters may have buried or moved hazardous chemical containers of solvents or other industrial chemicals from their normal storage places.

If any propane tanks (whether 20-lb. tanks from a gas grill or household propane tanks) are discovered, do not attempt to move them yourself. These represent a very real danger of fire or explosion, and if any are found, police or fire departments or your State Fire Marshal's office should be contacted immediately.

Car batteries, even those in flood water, may still contain an electrical charge and should be removed with extreme caution by using insulated gloves. Avoid coming in contact with any acid that may have spilled from a damaged car battery.