

Figure B.48 Hydrogeological Cross Section of Skopje Valley

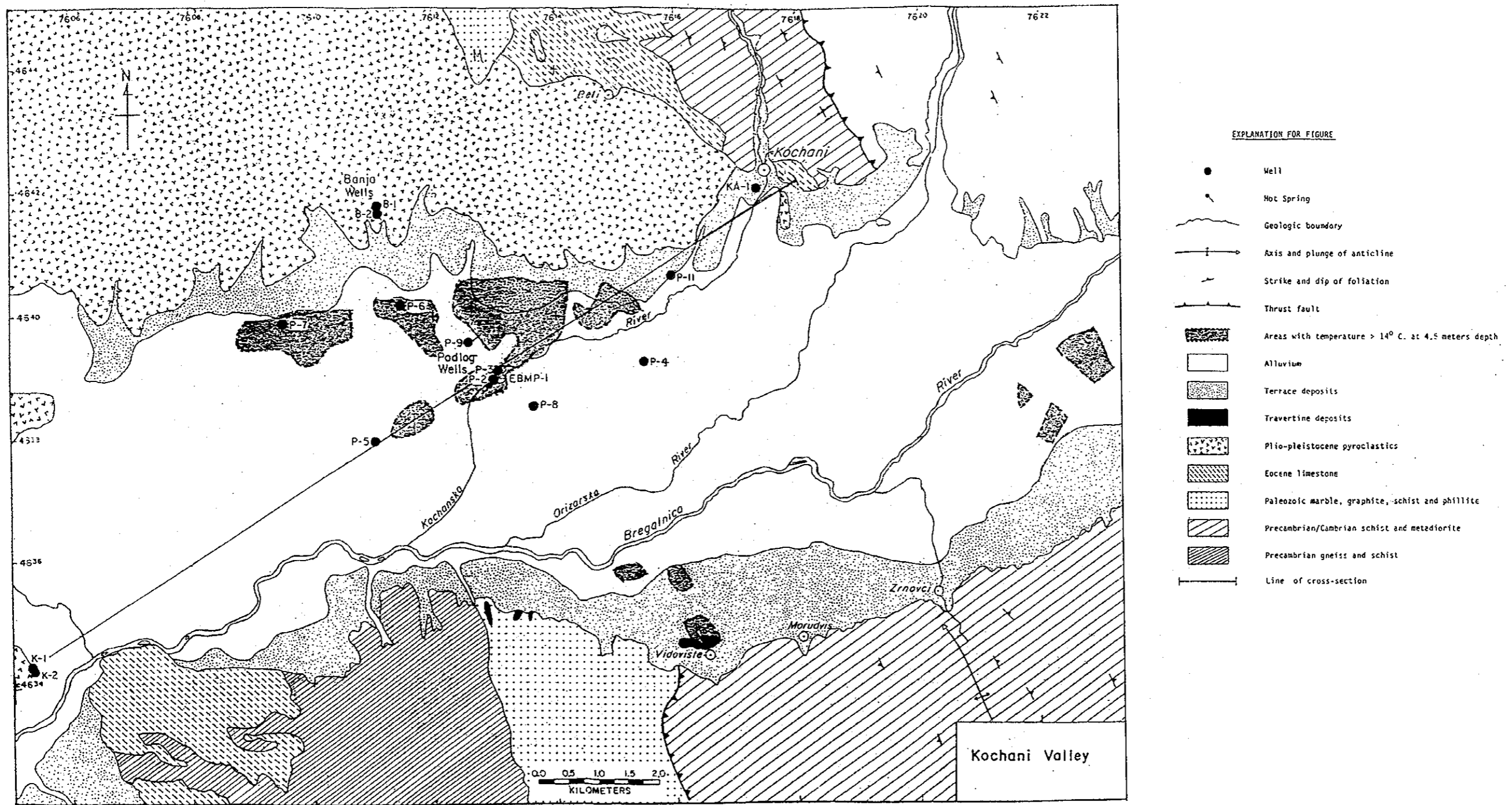


Figure B.49 Geological Map of Kochani-Bregalnica Valley

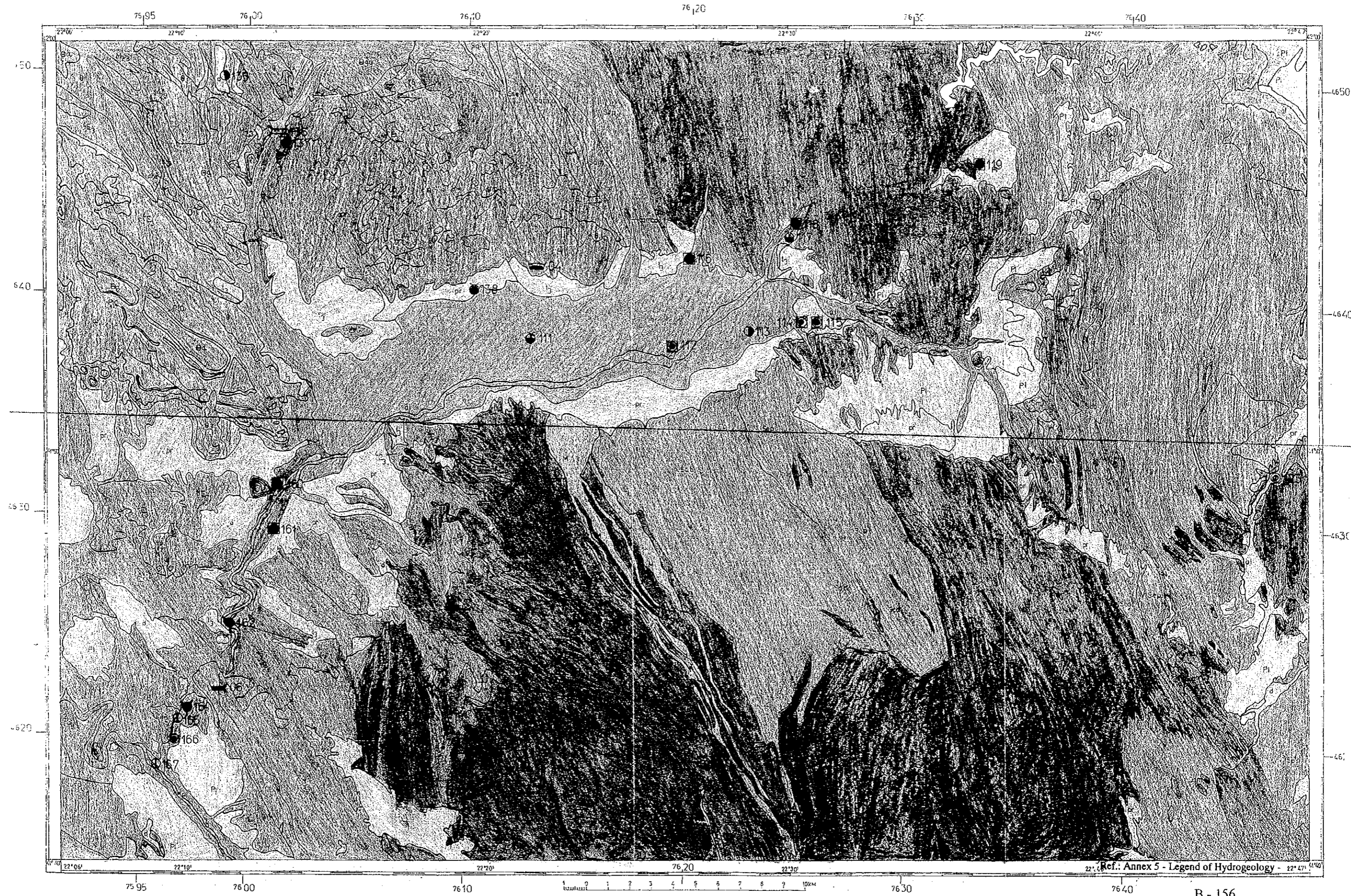


Figure B.50 Hydrogeological Map of Kochani-Bregalnica Valley

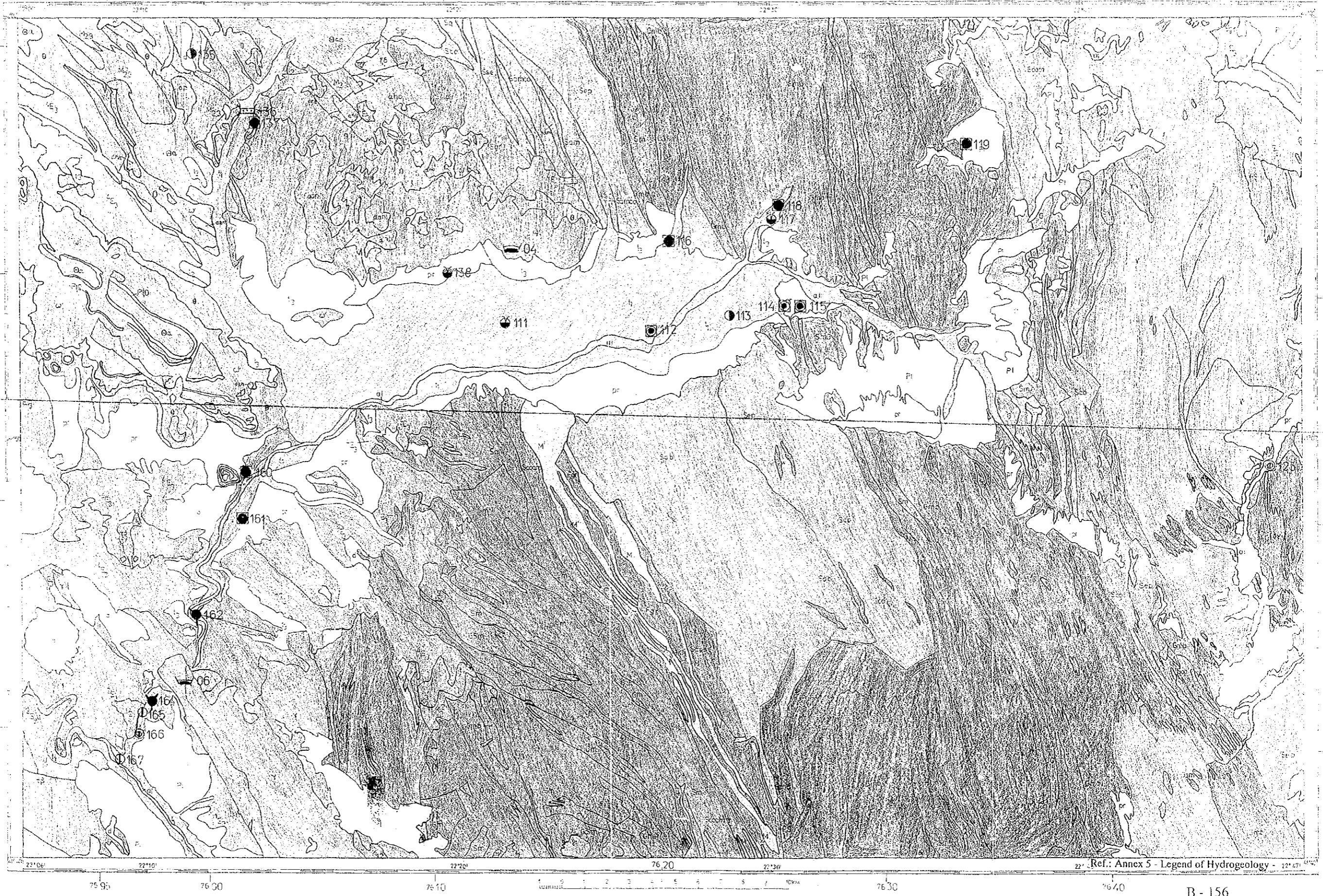


Figure B.50 Hydrogeological Map of Kochani-Bregalnica Valley

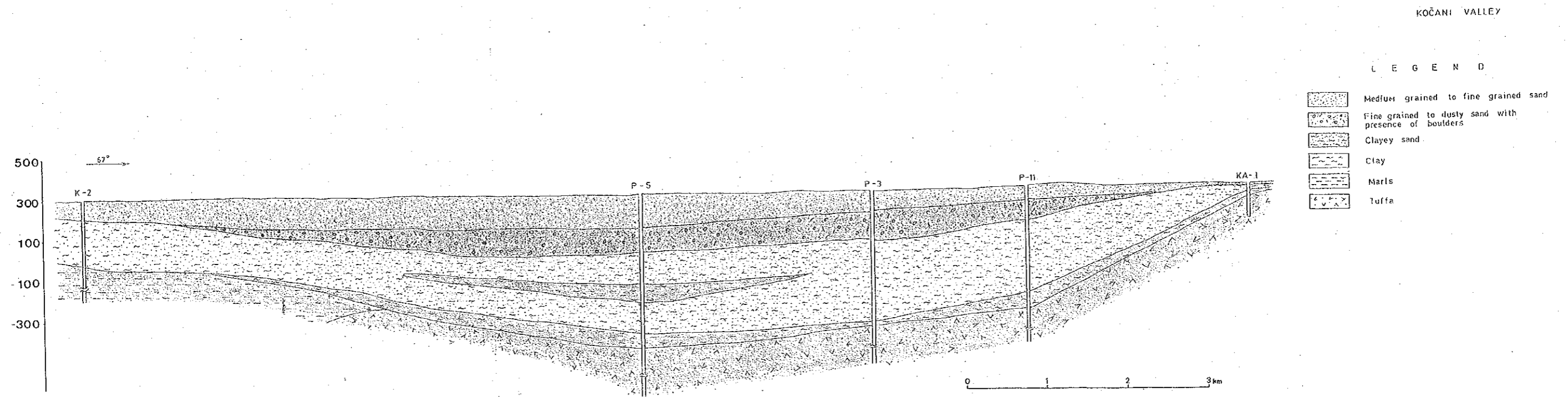
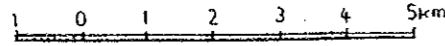


Figure B.51 Hydrogeological Cross Section of Kochani-Bregalnica Valley

GEOLOGICAL MAP OF STRUMICA VALLEY



L E G E N D

- | | | | |
|--|--|--|---|
| | at Alluvium | | x ^r Metarhiolites |
| | d Diluvium | | g ^m Gneiss alkaline granites of Belasica |
| | pr Proluvium | | va Amphibole gabbros |
| | b Organic marsh sediments | | ss Serpentine |
| | t ₂ Higher terrace | | pt ₁ F Philites and metasandstones |
| | pl ₃ Sands, clays and gravels | | scob ₃ Chloride schists metadiabases and tuffa |
| | da Dacites | | m Marbles |
| | e ₃ Volcanogenous sediments sandstones, limestones, conglomerates | | smm Micaschists and leptynolites |
| | v ^x Rhiolites | | a Amphibolites |
| | g ^o Calco-alkaline granites of Ogražden | | som Amphibolite schists |
| | | | g Gneisses and migmatites |
| | | | Normal boundary confirmed and covered |
| | | | Gronual transition |
| | | | Erozion boundaries: confirmed and covered |
| | | | Boundary of magmatic body confirmed and covered |
| | | | Fault: confirmed, covered and photogeological observed |
| | | | Relatively lowered block |
| | | | Mylonite |
| | | | Diapiric contact |
| | | | Front of imprication: confirmed and covered |

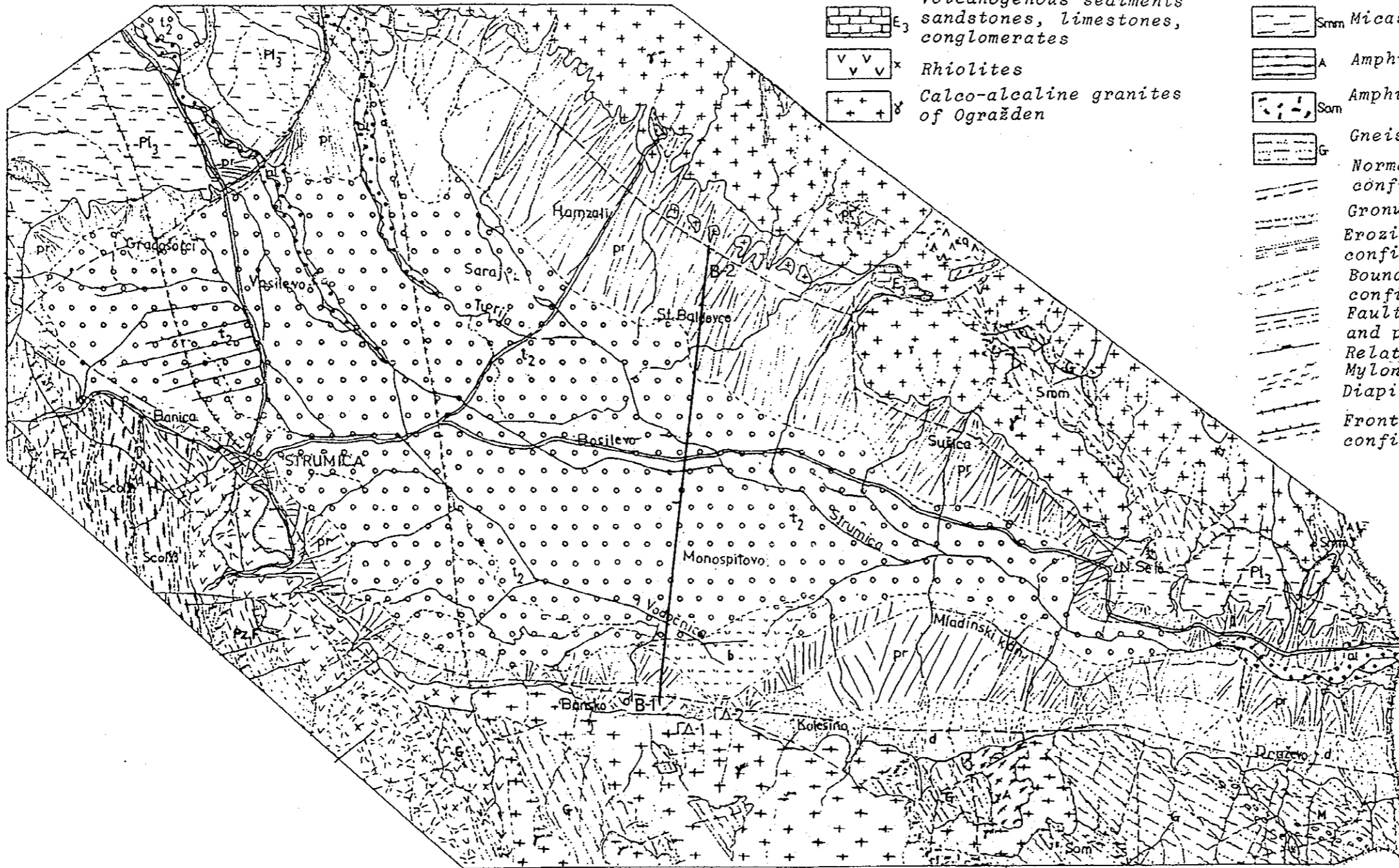


Figure B.52 Geological Map of Strumica Valley

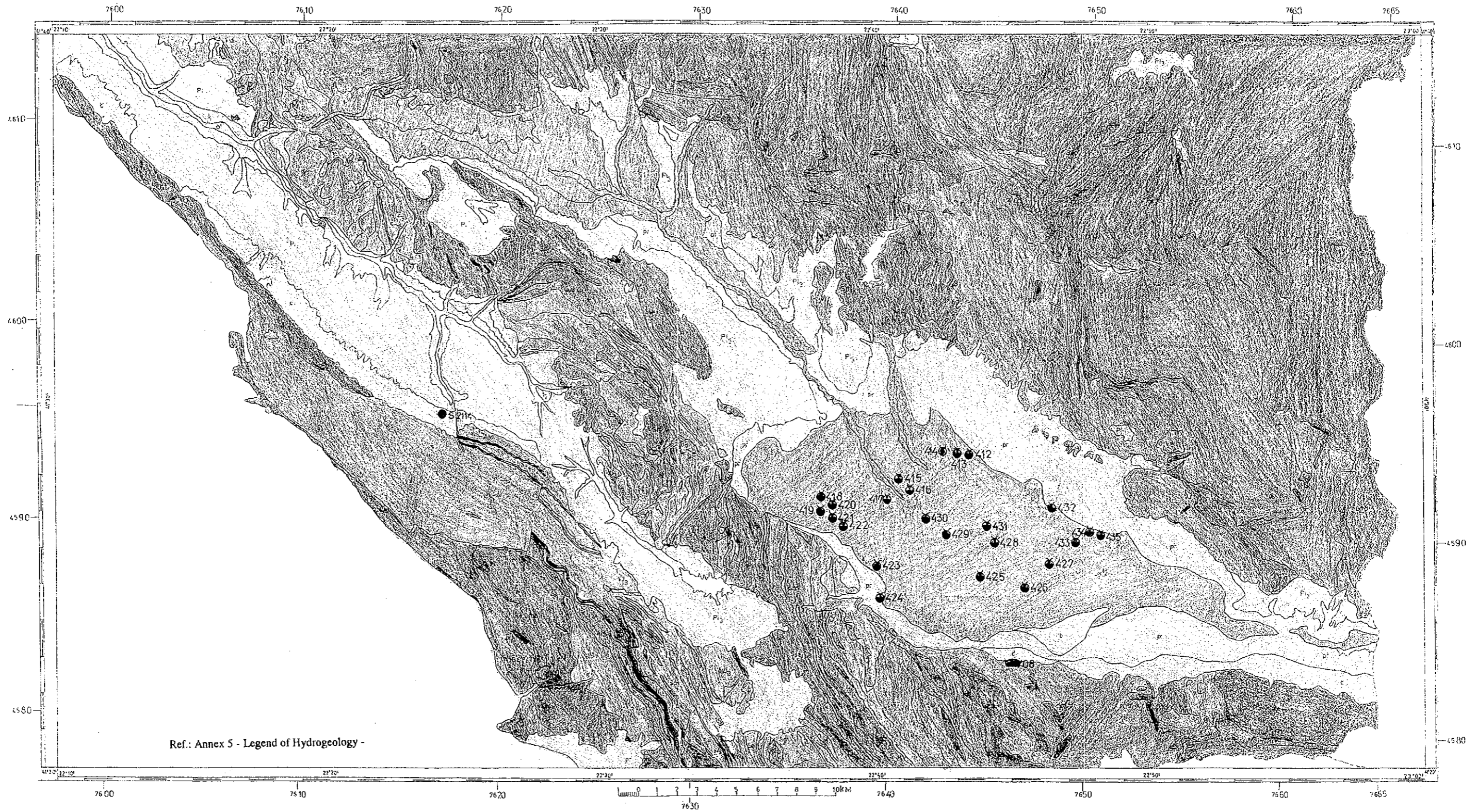
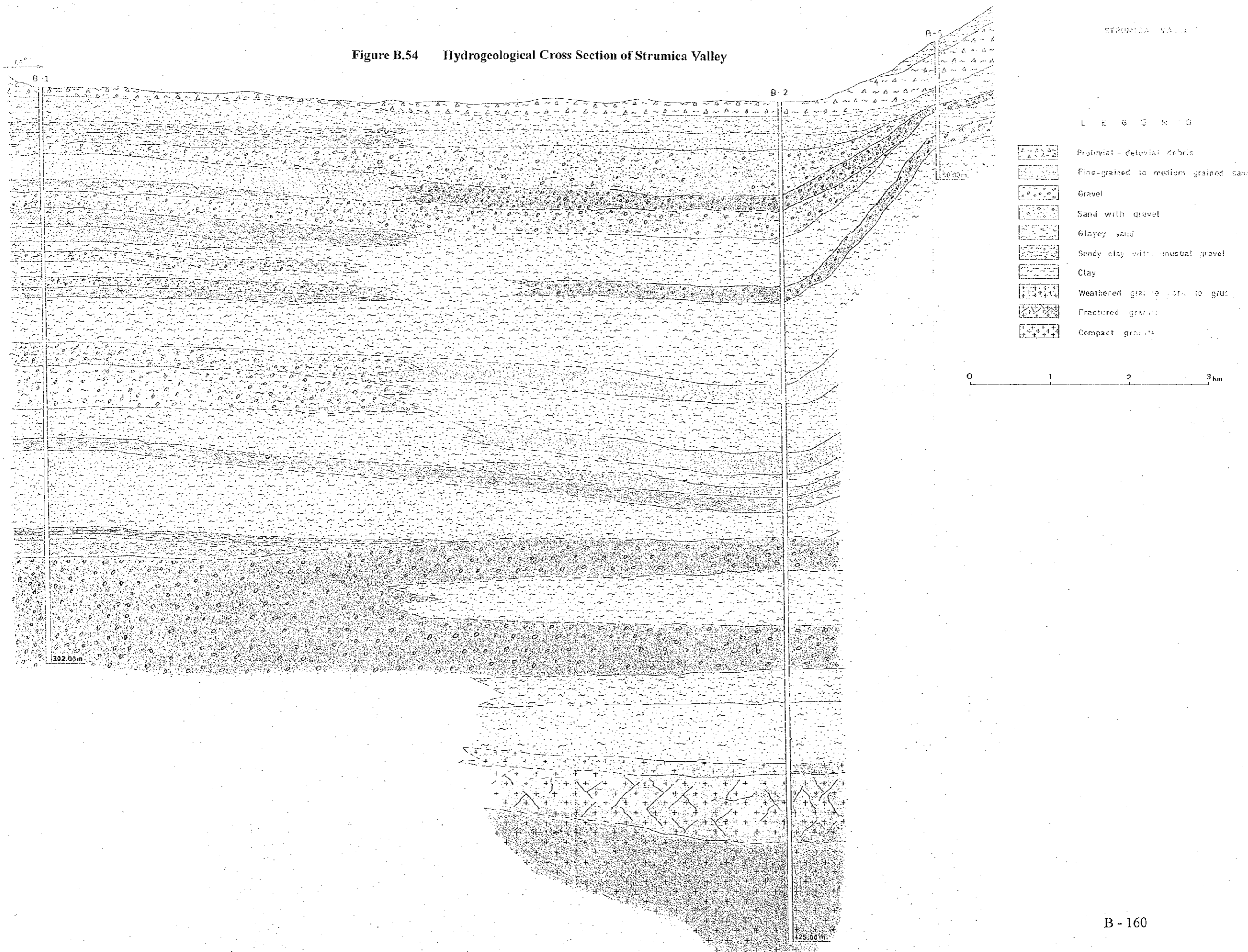


Figure B.53 Hydrogeological Map of Strumica Valley

Figure B.54 Hydrogeological Cross Section of Strumica Valley



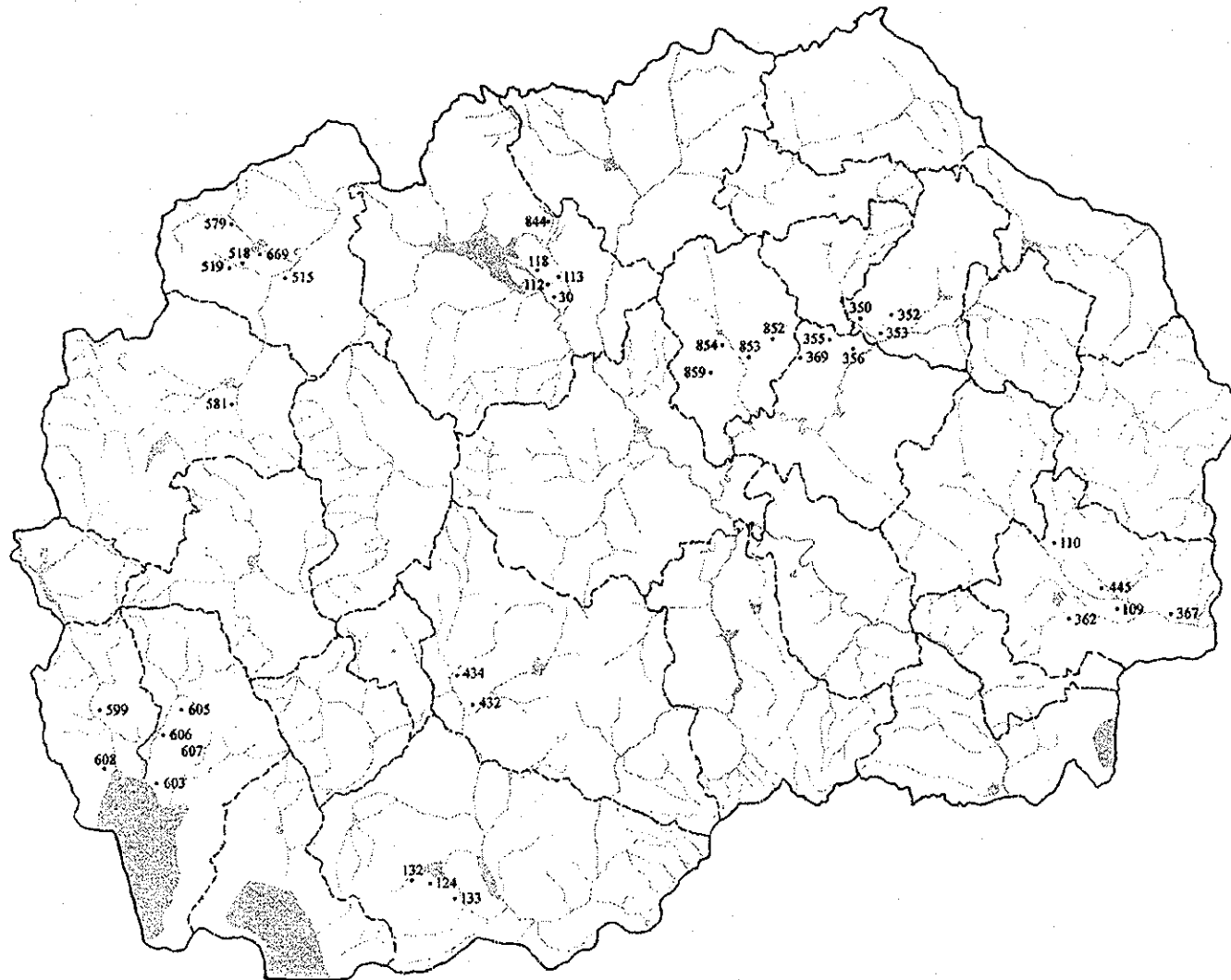


Figure B.55 Groundwater Monitoring Stations by HMI

0 10 20 30 40 50 km

Scale

THE STUDY ON INTEGRATED WATER RESOURCES
DEVELOPMENT AND MANAGEMENT MASTER PLAN
IN THE FORMER YUGOSLAV REPUBLIC OF MACEDONIA
JAPAN INTERNATIONAL COOPERATION AGENCY

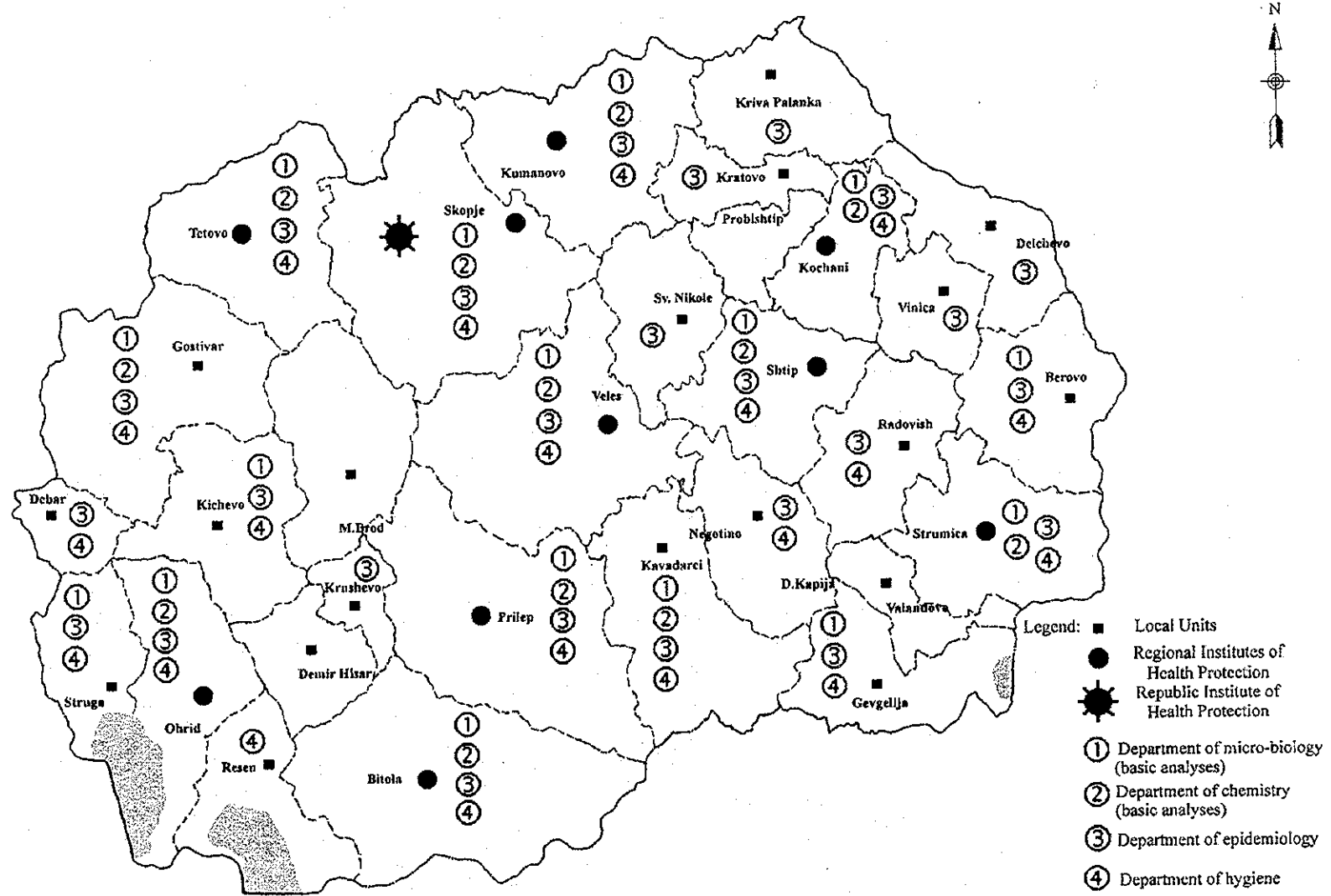
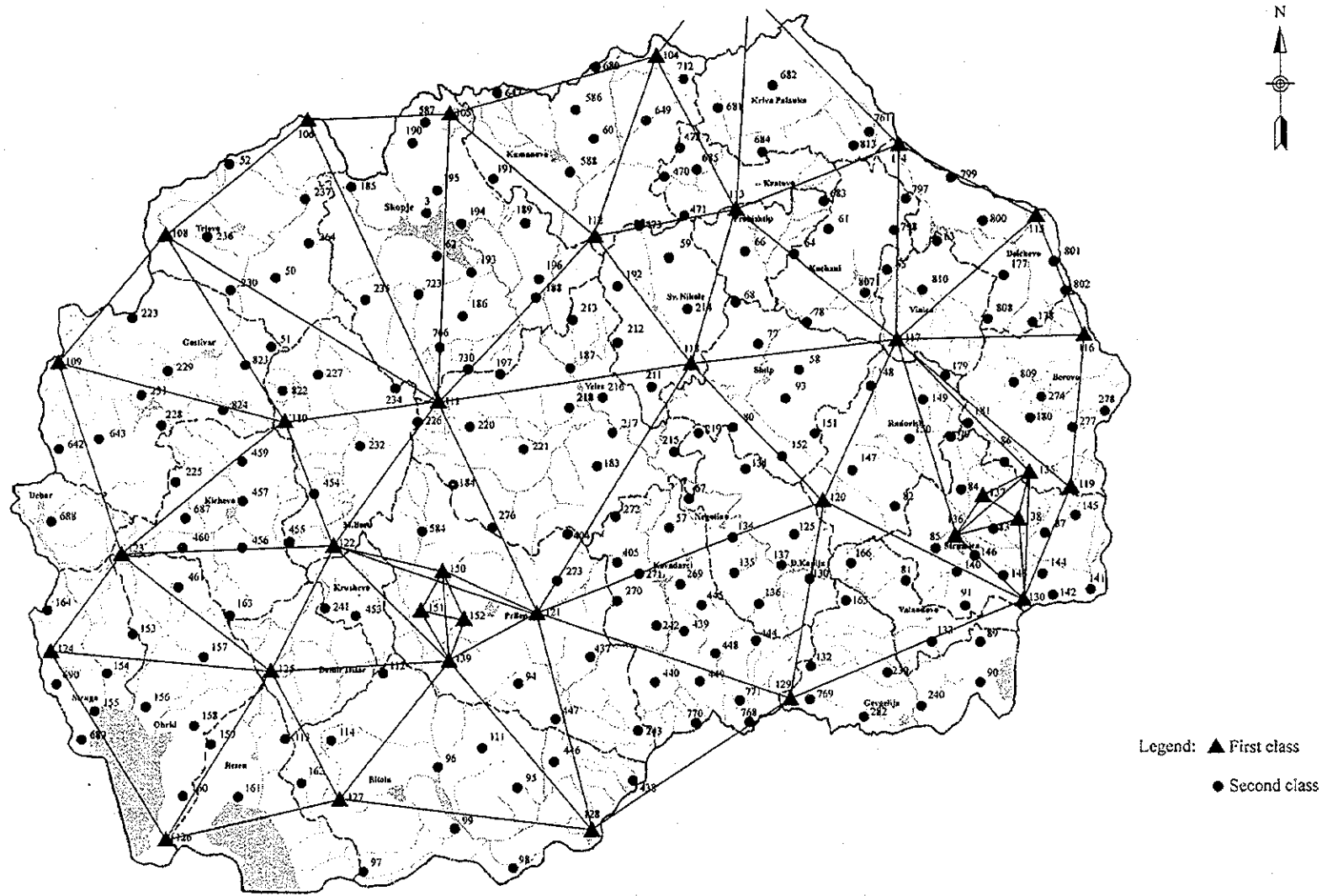


Figure B.56 Republic and Regional Institutes of Health Protection under MOH

0 10 20 30 40 50 km

Scale

THE STUDY ON INTEGRATED WATER RESOURCES
DEVELOPMENT AND MANAGEMENT MASTER PLAN
IN THE FORMER YUGOSLAV REPUBLIC OF MACEDONIA
JAPAN INTERNATIONAL COOPERATION AGENCY



Legend: ▲ First class
● Second class

Figure B.57 Surveying Network

0 10 20 30 40 50 km

Scale

THE STUDY ON INTEGRATED WATER RESOURCES
DEVELOPMENT AND MANAGEMENT MASTER PLAN
IN THE FORMER YUGOSLAV REPUBLIC OF MACEDONIA
JAPAN INTERNATIONAL COOPERATION AGENCY

