

**Table 2.1 Population by Former and New Municipality (1/3)**

No.	Name of former municipalities	No.	Name of new municipalities	1994 Census Population	Estimated Population in 1997
01	Skopje	0101	Gazi Baba	67,664	69,293
		0102	Dorce Petrov	37,961	119,658
	City of Skopje	0103	Karpos	58,359	
		0104	Kisela Voda	118,079	119,601
		0105	Centar	85,021	86,752
		0106	Cair	63,375	80,480
		0107	Suto Orizari	14,301	
		0108	Aracinovo	9,960	10,670
		0109	Zelenikovo	4,236	4,378
		0110	Ilinden	14,512	14,937
		0111	Kondovo	9,840	10,399
		0112	Petrovec	8,123	8,368
		0113	Saraj	21,302	(*)
		0114	Sopiste	9,684	9,843
		0115	Studenicani	14,747	15,572
		0116	Cucer-Sandevo	8,064	8,262
	<b>Sub-total</b>			<b>545,228</b>	<b>558,213</b>
02	Gostivar	0201	Vrapciste	8,416	8,731
		0202	Vrutok	5,460	5,708
		0203	Gostivar	45,740	47,939
		0204	D.Banjica	7,791	8,061
		0205	Mavrovi Anovi	1,349	1,400
		0206	Negotino(Polosko)	14,992	16,002
		0207	Rostusa	10,366	10,853
		0208	Srbinovo	3,951	4,213
		0209	Cegrane	11,746	12,369
			<b>Sub-total</b>		
03	Tetovo	0301	Bogovinje	13,001	13,684
		0302	Brvenica	14,793	15,492
		0303	Vratnica	3,270	3,353
		0304	Zelino	21,760	23,027
		0305	Jegunovce	7,013	7,197
		0306	Kamenjane	12,136	12,918
		0307	Tearce	20,797	21,596
		0308	Tetovo	65,318	67,673
		0309	Depciste	7,286	7,650
		0310	Sipkovica	6,797	7,293
			<b>Sub-total</b>		
04	Kicevo	0401	Vranestica	1,650	1,628
		0402	Drugovo	3,555	3,528
		0403	Zajas	10,055	10,551
		0404	Kicevo	27,543	28,447
		0405	Oslomej	9,170	9,587
	<b>Sub-total</b>			<b>51,973</b>	<b>53,741</b>
05	M. Brod	0501	Makedonski Brod	5,517	5,483
		0502	Plasnica	4,449	4,650
		0503	Samokov	2,057	2,019
	<b>Sub-total</b>			<b>12,023</b>	<b>12,152</b>
06	Kumanovo	0601	Klecevce	2,162	2,068
		0602	Kumanovo	94,589	97,074
		0603	Lipkovo	24,351	25,931
		0604	Orasac	1,638	1,560
		0605	Staro Nagoricane	5,074	4,925
	<b>Sub-total</b>			<b>127,814</b>	<b>131,558</b>

**Table 2.1 Population by Former and New Municipality (2/3)**

No.	Name of former municipalities	No.	Name of new municipalities	1994 Census Population	Estimated Population in 1997
07	Kratovo	0701	Kratovo	10,898	10,905
	<b>Sub-total</b>			<b>10,898</b>	<b>10,905</b>
08	Kriva Palanka	0801	Kriva Palanka	20,782	20,989
		0802	Rankovce	4,347	4,318
	<b>Sub-total</b>			<b>25,129</b>	<b>25,307</b>
09	Veles	0901	Bogomila	1,336	1,305
		0902	Veles	56,751	57,568
		0903	Gradsko	3,822	3,896
		0904	Izvor	1,157	1,137
		0905	Caska	2,876	2,923
	<b>Sub-total</b>			<b>65,942</b>	<b>66,829</b>
10	Sv. Nikole	1001	Lozovo	2,916	2,939
		1002	Sveti Nikole	18,528	18,677
	<b>Sub-total</b>			<b>21,444</b>	<b>21,616</b>
11	Stip	1101	Karbinci	4,342	4,326
		1102	Stip	46,372	47,027
	<b>Sub-total</b>			<b>50,714</b>	<b>51,353</b>
12	Probstip	1201	Zletovo	3,687	3,706
		1202	Probstip	12,963	13,060
	<b>Sub-total</b>			<b>16,650</b>	<b>16,766</b>
13	Kocani	1301	Zrnovci	3,344	3,394
		1302	Kocani	32,051	32,576
		1303	Oblesevo	5,356	5,412
		1304	Orizari	4,724	4,765
		1305	Cesinovo	2,540	2,529
	<b>Sub-total</b>			<b>48,015</b>	<b>48,676</b>
14	Vinica	1401	Blatec	2,005	2,029
		1402	Vinica	17,058	17,409
	<b>Sub-total</b>			<b>19,063</b>	<b>19,438</b>
15	Delcevo	1501	Delcevo	17,726	17,880
		1502	Makedonska	8,084	8,269
	<b>Sub-total</b>			<b>25,810</b>	<b>26,149</b>
16	Berovo	1601	Berovo	14,179	14,259
		1602	Pehcevo	5,650	5,654
	<b>Sub-total</b>			<b>19,829</b>	<b>19,913</b>
17	Demir Hisar	1701	Demir Hisar	7,616	7,552
		1702	Sopotnica	2,994	2,904
	<b>Sub-total</b>			<b>10,610</b>	<b>10,456</b>
18	Krusevo	1801	Zitose	2,116	2,218
		1802	Krusevo	9,821	9,916
	<b>Sub-total</b>			<b>11,937</b>	<b>12,134</b>
19	Bitola	1901	Bac	963	928
		1902	Bistrica	5,779	5,818
		1903	Bitola	86,176	86,780
		1904	Dobruševo	2,379	2,395
		1905	Kukurecani	2,859	2,843
		1906	Mogila	4,954	4,960
		1907	Novaci	2,844	2,844
		1908	Staravina	456	453
		1909	Capari	1,793	1,768
	<b>Sub-total</b>			<b>108,203</b>	<b>108,789</b>

**Table 2.1 Population by Former and New Municipality (3/3)**

No.	Name of former municipalities	No.	Name of new municipalities	1994 Census Population	Estimated Population in 1997
20	Prilep	2001	Vitoliste	882	832
		2002	Dolneni	11,705	11,980
		2003	Krivogastani	6,312	6,329
		2004	Prilep	71,899	72,797
		2005	Topolcani	3,385	3,372
	<b>Sub-total</b>			<b>94,183</b>	<b>95,310</b>
21	Kavadarci	2101	Kavadarci	37,189	37,744
		2102	Konopiste	510	484
		2103	Rosoman	4,238	4,266
	<b>Sub-total</b>			<b>41,937</b>	<b>42,494</b>
22	Negotino	2201	Demir Kapija	4,815	4,821
		2202	Negotino	18,341	18,721
	<b>Sub-total</b>			<b>23,156</b>	<b>23,542</b>
23	Valandovo	2301	Valandovo	12,092	12,271
	<b>Sub-total</b>			<b>12,092</b>	<b>12,271</b>
24	Gevgelija	2401	Bogdanci	8,899	8,950
		2402	Gevgelija	19,488	19,593
		2403	Miravci	2,779	2,766
		2404	Star Dojran	3,651	3,674
	<b>Sub-total</b>			<b>34,817</b>	<b>34,983</b>
25	Ohrid	2501	Belcista	3,354	3,212
		2502	Kosel	1,759	1,716
		2503	Meseista	2,918	2,885
		2504	Ohrid	52,732	53,720
	<b>Sub-total</b>			<b>60,763</b>	<b>61,533</b>
26	Struga	2601	Vevcani	2,448	2,464
		2602	Velesta	6,917	7,341
		2603	Deloguzdi	6,561	6,956
		2604	Labunista	9,312	9,745
		2605	Lukovo	1,932	1,950
		2606	Struga	35,509	36,760
	<b>Sub-total</b>			<b>62,679</b>	<b>65,216</b>
27	Debar	2701	Debar	17,588	18,422
		2702	Centar Zupa	6,200	6,573
	<b>Sub-total</b>			<b>23,788</b>	<b>24,995</b>
28	Resen	2801	Resen	17,681	17,708
	<b>Sub-total</b>			<b>17,681</b>	<b>17,708</b>
29	Radovis	2901	Konce	3,713	3,779
		2902	Podares	3,669	3,755
		2903	Radovis	23,143	23,703
	<b>Sub-total</b>			<b>30,525</b>	<b>31,237</b>
30	Strumica	3001	Bosilovo	12,476	12,744
		3002	Vasilevo	11,409	11,726
		3003	Kuklis	4,682	4,783
		3004	Murtino	6,230	6,398
		3005	Novo Selo	12,382	12,621
		3006	Strumica	43,868	44,683
	<b>Sub-total</b>			<b>91,047</b>	<b>92,955</b>
<b>Grand Total</b>				<b>1,945,932</b>	<b>1,991,398</b>

Source: Statistical Yearbook of the Republic of Macedonia 1997, Statistical Office

Note: The borders of the groups of new municipalities are not exactly the same as the previous municipality borders.

\* Estimated population of Saraj in 1997 is included in the one of Karpos.

Table 2.2 Socioeconomic Indicators by Former Municipality

No.	Former Municipalities	1994 census population	Surface area	Population density	Average annual growth rate of population (1994-1997)	% of non-Macedonians (mother tongue)	Infant deaths per 1000 live birth	No. of medical doctors per 1000 pop.	% of cultivable area	Income per capita (National Income/pop.) '000 Denar	Wheat yield (kg/ha)	% of mining & industry sector in national income	% of agriculture & fisheries sector in national income
01	Skopje	545,228	1,858	293	0.79	33.01	19.7	4.6	26.37	100	2,607	27.75	3.05
02	Gostivar	108,181	1,370	79	1.63	74.96	7.9	1.7	10.29	25	3,366	24.29	36.84
03	Tetovo	172,171	1,091	158	1.47	78.60	14.5	1.5	28.96	35	3,415	29.98	45.16
04	Kicevo	52,958	833	64	1.12	55.36	13.8	1.8	14.65	27	2,246	48.81	14.84
05	Brod	11,022	933	12	0.36	28.83	25.5	1.5	7.50	18	1,501	--	42.37
06	Kumanovo	127,814	1,202	106	0.97	46.96	13.8	1.9	45.92	37	2,284	44.95	15.10
07	Kratovo	10,898	380	29	0.02	1.65	16.8	1.7	28.68	50	1,370	77.04	14.72
08	Kriva Palanka	25,129	728	35	0.24	3.02	16.9	1.7	29.12	30	2,201	29.04	14.73
09	Veles	65,942	1,552	42	0.45	15.71	25.8	3.6	25.00	55	2,134	46.60	17.52
10	Sveti Nikole	21,444	651	33	0.27	3.80	31.7	2.1	53.76	49	1,951	41.69	37.47
11	Stip	50,714	870	58	0.42	11.60	22.7	3.5	27.36	51	2,226	35.84	10.87
12	Probitip	16,650	329	51	0.23	1.28	5.3	1.9	32.22	29	1,689	47.21	30.36
13	Kocani	48,538	577	84	0.46	4.30	11.1	2.1	30.33	37	2,611	29.80	24.93
14	Vinica	19,063	442	43	0.65	7.10	17.3	1.8	19.91	38	1,628	61.28	11.91
15	Delcevo	25,287	591	43	0.44	5.17	16.8	1.7	25.89	38	1,339	62.16	13.30
16	Berovo	19,829	815	24	0.14	5.08	5.2	2.4	23.19	36	981	42.80	21.38
17	Demir Hisar	10,524	435	24	-0.49	3.57	11.8	4.7	16.09	32	1,666	34.27	28.04
18	Krusevo	12,005	204	59	0.55	42.31	39.8	2.2	29.41	29	2,125	23.33	46.15
19	Bitola	108,203	1,716	63	0.18	7.32	20.6	6.0	37.18	78	2,897	41.56	17.62
20	Prilep	94,183	1,842	51	0.40	12.19	14.4	3.3	34.96	57	1,516	53.31	19.61
21	Kavadarci	41,937	1,146	37	0.44	2.35	15.4	2.9	19.37	59	2,242	34.01	35.79
22	Negotino	23,156	743	31	0.55	4.66	NA	1.9	19.11	65	2,578	56.33	22.58
23	Valandovo	12,092	334	36	0.49	17.46	12.9	2.0	19.76	27	2,586	20.32	45.95
24	Gevgelija	34,817	765	46	0.16	5.47	10.7	3.1	18.56	68	2,759	23.25	14.97
25	Ohrid	60,763	1,041	58	0.42	12.36	17.2	4.9	15.56	61	2,121	35.43	13.68
26	Struga	62,679	546	115	1.33	46.21	9.5	2.5	20.70	25	1,971	33.79	15.68
27	Debar*	25,452	267	95	1.66	68.65	30.2	1.8	13.48	19	2,189	32.19	22.17
28	Resen	17,681	746	24	0.05	23.66	10.5	4.2	15.95	67	2,271	40.12	33.03
29	Radovis	30,525	743	41	0.77	14.76	18.8	1.3	23.55	42	1,830	52.61	24.27
30	Strumica	91,047	963	95	0.69	7.11	18.0	2.2	30.01	39	2,465	25.37	34.92
<b>Grand Total:</b>		<b>1,945,932</b>	<b>25,713</b>	<b>76</b>	<b>0.77</b>	<b>31.50</b>	<b>16.4</b>	<b>3.2</b>	<b>25.58</b>	<b>59</b>	<b>2,292</b>	<b>33.80</b>	<b>13.99</b>

Source: Statistical Yearbook of the Republic of Macedonia 1997, Statistical Office of Macedonia

**Table 2.3 Average Annual Basin Rainfall Based on Thiessen Polygon Network**

Unit: mm

Year	River Basin							Average
	B1	B2	B3	B4	B5	B6	B7	
1961	496	632	544	456	469	505	604	529
1962	898	1,115	641	813	828	934	1,077	901
1963	921	1,210	581	733	845	879	1,202	910
1964	733	975	704	557	729	767	895	766
1965	595	835	531	592	506	663	846	653
1966	640	696	584	573	593	720	942	678
1967	541	579	492	504	549	515	758	563
1968	651	632	519	485	548	531	831	600
1969	644	698	593	522	532	564	978	647
1970	626	757	582	556	574	583	1,042	674
1971	610	728	500	473	534	577	877	614
1972	699	877	637	649	633	678	888	723
1973	430	532	412	404	418	412	526	448
1974	637	806	593	582	634	580	994	690
1975	552	661	507	501	575	522	661	568
1976	588	631	610	580	514	560	563	578
1977	423	546	414	399	410	340	753	469
1978	628	829	529	555	599	627	1,039	687
1979	685	874	558	657	809	691	1,096	767
1980	667	795	617	669	624	753	927	722
1981	717	833	659	648	746	583	1,001	741
1982	560	501	499	545	546	604	636	556
1983	663	758	603	697	600	682	755	680
1984	532	666	454	454	449	368	791	531
1985	570	718	505	548	531	509	889	610
1986	478	593	354	371	461	306	798	480
1987	585	584	528	550	561	593	787	598
1988	464	530	443	469	456	461	605	490
1989	513	535	565	545	510	506	592	538
1990	396	504	343	423	399	493	592	450
1991	546	622	489	590	515	527	758	578
1992	433	509	397	365	399	356	458	417
1993	405	463	341	361	362	300	576	401
1994	506	508	367	421	379	507	596	469
1995	738	826	658	660	655	599	868	715
1996	379	404	331	338	315	347	497	373
<b>Average</b>	<b>587</b>	<b>693</b>	<b>519</b>	<b>535</b>	<b>550</b>	<b>559</b>	<b>797</b>	<b>606</b>

Remarks: B1, Vardar River main stream  
 B2, Treska River  
 B3, Pchinja River  
 B4, Bregalnica River  
 B5, Crna River  
 B6, Crn Drim River  
 B7, Strumica River

**Table 2.4 Mean Monthly Rainfall for the Main and Secondary Meteorological Network Stations (1961-1996)**

Unit: mm

No	Station Name	Jan	Feb	Mar	Apr	May	Jun	Jul	Aug	Sep	Oct	Nov	Dec	Total
1	RST279_Gevgelija	55.4	56.9	63.1	53.6	63.1	42.2	36.0	35.2	31.6	64.0	81.3	84.9	667.2
2	RST045_Valandovo	45.0	46.8	48.1	51.1	65.3	34.7	36.4	32.4	32.1	56.0	76.6	58.7	583.2
3	RST041_D. Kapija	54.0	44.0	47.6	46.0	56.8	38.4	34.6	23.1	29.4	47.6	59.3	64.3	545.1
4	RST151_Veles	32.3	29.7	34.5	36.1	51.9	43.5	38.0	27.4	24.7	40.0	48.1	38.1	444.3
5	RST047_Dojran	46.2	49.0	56.3	54.1	56.7	47.0	36.7	33.8	31.4	57.2	86.0	68.2	622.7
6	RST269_Strumica	38.4	39.3	40.5	49.0	60.6	39.1	41.6	31.5	34.9	48.4	61.5	62.6	547.4
7	RST136_Trubarevo	32.7	35.5	36.8	45.0	63.4	53.1	35.9	26.9	41.5	41.8	48.4	47.0	507.9
8	RST027_Skopje	37.9	33.7	39.8	44.5	56.9	44.2	36.7	26.6	35.3	42.1	53.6	53.8	505.2
9	RST165_Erdzhelija	27.9	25.6	32.4	44.0	50.0	38.7	39.2	31.3	31.8	38.7	38.1	44.2	441.7
10	RST038_Kavadarci	35.5	33.0	37.0	38.7	54.4	39.9	37.9	23.5	28.3	38.5	49.1	45.2	460.9
11	RST141_Kat. Banja	31.8	35.5	38.0	47.7	58.3	45.2	50.1	28.3	33.4	40.8	46.0	50.6	505.7
12	RST040_Shtip	29.2	27.6	32.9	42.9	55.5	41.0	39.4	31.6	29.9	44.3	48.6	44.1	467.0
13	RST072_Kumanovo	36.6	31.1	36.3	41.2	59.5	45.5	54.1	30.9	43.0	39.3	48.8	44.0	510.3
14	RST042_Kochani	35.2	34.9	37.2	44.2	56.1	47.9	44.5	36.4	30.1	42.5	58.8	46.7	514.5
15	RST044_Radovish	30.8	34.2	38.3	39.0	44.1	32.0	30.7	21.1	25.3	39.6	47.5	41.0	423.6
16	RST001_Tetovo	72.4	59.5	64.3	56.0	65.2	40.6	37.9	37.4	41.5	59.6	88.6	89.0	712.0
17	RST017_Gostivar	82.4	75.4	78.1	61.5	63.7	46.6	43.6	33.3	43.8	77.0	99.9	88.0	793.5
18	RST023_M. Brod	58.7	54.3	55.1	55.7	63.4	43.3	37.3	32.3	36.3	59.9	78.9	63.9	639.1
19	RST025_Bitola	49.8	48.2	48.3	47.3	59.7	38.0	40.4	33.6	37.9	57.9	71.2	70.5	602.6
20	RST018_Kichevo	76.8	60.9	70.7	55.4	62.2	49.3	40.5	39.2	47.1	71.0	103.9	91.4	768.4
21	RST049_Delchevo	31.1	35.4	36.8	47.0	62.8	54.8	49.0	43.4	37.5	49.5	54.6	44.7	546.6
22	RST008_Kratovo	49.2	47.9	49.8	62.1	67.5	60.1	62.7	37.5	45.6	54.3	70.3	56.0	663.2
23	RST028_Prilep	36.1	36.0	42.1	47.8	60.4	48.1	41.0	30.9	34.8	49.1	63.1	45.7	535.0
24	RST011_Debar	76.4	73.7	91.2	74.4	74.8	43.3	39.8	34.9	56.5	88.3	112.9	120.1	886.2
25	RST009_K. Palanka	38.1	39.4	43.5	55.1	71.9	65.7	56.3	45.3	47.5	44.0	61.3	49.1	617.3
26	RST211_Struga	100.0	68.9	77.7	57.3	64.7	34.1	28.0	32.0	49.4	83.4	103.5	81.7	780.8
27	RST015_Ohrid	65.2	64.8	61.3	54.2	58.3	38.0	26.9	31.3	44.0	69.8	100.7	80.0	694.3
28	RST050_Berovo	38.9	40.5	42.4	49.0	69.9	58.5	49.1	45.2	38.0	44.8	62.5	55.1	593.8
29	RST234_Resen	70.9	60.1	54.4	49.7	70.7	38.0	29.7	29.2	48.2	78.4	91.1	73.3	693.5
30	RST024_Krushevo	62.4	65.1	67.4	65.7	81.0	55.6	47.4	40.6	46.8	75.2	96.2	81.4	784.8
31	RST014_Mavrovi	100.8	83.5	95.4	88.7	79.1	54.0	50.6	43.7	60.5	85.0	141.0	125.9	1008.3
32	RST013_Lazaropole	97.2	89.0	101.9	91.4	84.5	58.2	48.9	50.4	70.7	94.9	145.6	126.2	1059.1
33	RST294_Pop. Shapka	63.1	53.4	63.2	80.7	94.9	71.8	66.5	59.1	72.4	86.6	104.2	85.7	901.4
34	RST127_Gorna Belica	46.2	39.9	50.4	48.9	64.8	49.3	45.6	38.7	41.6	48.4	106.3	60.1	640.3
	Average	52.5	48.6	53.3	53.7	63.9	46.5	42.1	34.6	40.7	57.6	76.7	67.1	637.3

**Table 2.5 Average Annual Rainfall Depth for Successive 1-Year Period for Drought Analysis (1/2)**

Station	1961	1962	1963	1964	1965	1966	1967	1968	1969	1970	1971	1972	1973	1974	1975	1976	1977	1978
RST003_Romanovci	494 (15)	767 (34)	648 (31)	519 (20)	475 (11)	595 (28)	431 (7)	557 (25)	508 (16)	524 (22)	516 (19)	716 (33)	402 (5)	546 (24)	484 (13)	644 (30)	296 (2)	515 (18)
RST004_Vojnik	626 (29)	753 (35)	653 (31)	690 (34)	500 (21)	544 (24)	405 (9)	499 (20)	470 (16)	514 (23)	483 (18)	659 (32)	353 (6)	565 (27)	412 (10)	468 (15)	324 (5)	446 (14)
RST005_Stracin	432 (11)	638 (33)	537 (24)	650 (36)	490 (17)	415 (9)	474 (15)	516 (21)	623 (31)	532 (23)	553 (25)	564 (27)	382 (7)	491 (18)	442 (13)	554 (26)	340 (2)	392 (8)
RST006_German	633 (15)	507 (9)	567 (11)	813 (30)	639 (16)	841 (31)	661 (19)	662 (20)	869 (33)	893 (34)	701 (23)	675 (22)	503 (8)	437 (5)	496 (7)	556 (10)	372 (2)	652 (17)
RST007_Trnovec	492 (11)	680 (27)	610 (20)	725 (30)	552 (16)	664 (26)	556 (18)	525 (9)	636 (21)	744 (31)	576 (23)	1229 (32)	706 (19)	855 (35)	846 (28)	711 (34)	634 (33)	331 (29)
RST009_Kriva Palanka	613 (18)	677 (28)	606 (16)	676 (27)	593 (14)	769 (34)	535 (9)	562 (11)	656 (29)	681 (8)	532 (21)	647 (6)	498 (20)	641 (26)	669 (30)	682 (30)	582 (13)	712 (33)
RST010_Sasa	595 (7)	1074 (35)	1028 (33)	904 (29)	782 (20)	1038 (34)	745 (16)	746 (16)	990 (17)	923 (30)	705 (14)	1077 (36)	576 (6)	904 (28)	857 (26)	807 (24)	650 (11)	791 (21)
RST011_Debar - kl	680 (14)	1039 (29)	1096 (32)	899 (25)	908 (26)	1050 (30)	796 (21)	535 (8)	1062 (31)	1019 (28)	772 (19)	880 (24)	469 (7)	543 (27)	543 (10)	839 (13)	839 (23)	1101 (33)
RST013_Lazaropole	930 (15)	1342 (34)	1482 (35)	1110 (25)	1013 (18)	1151 (28)	898 (11)	920 (13)	1117 (26)	1324 (33)	868 (9)	1045 (21)	615 (1)	1096 (24)	768 (3)	757 (2)	856 (7)	1260 (31)
RST015_Ohrid	509 (6)	985 (35)	1092 (36)	744 (28)	742 (27)	894 (33)	618 (14)	665 (18)	705 (20)	737 (24)	738 (26)	654 (16)	383 (1)	726 (22)	571 (9)	385 (2)	584 (11)	751 (30)
RST016_Belchishte	691 (15)	1261 (35)	1422 (36)	956 (30)	1017 (33)	1231 (34)	825 (21)	747 (17)	1000 (32)	880 (25)	838 (23)	811 (19)	549 (5)	939 (29)	636 (11)	508 (2)	628 (10)	919 (27)
RST018_Kichevo - kl	601 (12)	980 (34)	1142 (36)	989 (35)	739 (23)	884 (31)	691 (20)	742 (24)	906 (32)	858 (29)	874 (30)	853 (28)	568 (10)	816 (26)	682 (18)	492 (4)	629 (13)	728 (22)
RST020_Cer	572 (4)	1110 (35)	1130 (36)	910 (28)	789 (16)	893 (25)	766 (15)	719 (12)	823 (20)	890 (24)	900 (26)	921 (29)	548 (3)	887 (23)	743 (14)	645 (7)	582 (6)	947 (31)
RST021_Kazhani	765 (16)	1138 (36)	1122 (35)	1054 (32)	779 (18)	1096 (34)	828 (22)	873 (26)	811 (20)	874 (27)	654 (12)	820 (21)	605 (7)	921 (31)	789 (19)	591 (6)	644 (9)	867 (25)
RST024_Krushevo	461 (1)	982 (34)	989 (35)	859 (26)	483 (11)	660 (15)	730 (17)	735 (18)	747 (14)	701 (18)	804 (25)	889 (27)	525 (3)	949 (31)	759 (19)	697 (13)	620 (6)	917 (30)
RST025_Bitola	414 (4)	750 (34)	720 (31)	627 (26)	386 (3)	596 (20)	602 (21)	546 (10)	561 (13)	608 (16)	742 (23)	368 (33)	596 (2)	533 (19)	534 (11)	365 (14)	602 (14)	602 (22)
RST026_Topolchani	430 (10)	773 (36)	671 (30)	621 (26)	376 (5)	519 (18)	645 (28)	647 (29)	698 (32)	602 (24)	466 (11)	562 (21)	400 (9)	613 (25)	244 (1)	388 (6)	365 (4)	536 (19)
RST027_Skopje	478 (18)	741 (36)	619 (33)	541 (24)	371 (2)	394 (9)	542 (25)	486 (20)	467 (16)	392 (8)	474 (17)	552 (26)	419 (10)	555 (27)	450 (13)	599 (32)	301 (1)	437 (12)
RST028_Prilep	435 (10)	713 (33)	741 (35)	698 (32)	490 (17)	568 (24)	468 (13)	521 (22)	488 (16)	508 (20)	507 (19)	647 (29)	425 (8)	588 (26)	524 (23)	505 (18)	414 (5)	574 (25)
RST030_Makovo	446 (5)	754 (33)	791 (36)	681 (29)	518 (15)	688 (30)	620 (24)	581 (20)	554 (17)	614 (23)	504 (13)	656 (26)	384 (4)	554 (18)	545 (16)	499 (12)	450 (6)	589 (21)
RST033_Vladilovci	309 (2)	605 (32)	1049 (36)	741 (35)	512 (26)	409 (18)	488 (23)	655 (33)	551 (30)	318 (3)	405 (17)	325 (4)	399 (16)	357 (9)	388 (13)	511 (25)	290 (2)	438 (21)
RST034_Drenovo - Kav	441 (10)	891 (36)	712 (34)	631 (30)	528 (19)	630 (29)	563 (22)	495 (15)	416 (7)	506 (16)	708 (33)	541 (20)	457 (11)	575 (24)	526 (18)	609 (26)	358 (5)	609 (27)
RST035_Sveti Nikole	355 (12)	656 (36)	540 (31)	469 (25)	352 (11)	379 (15)	313 (9)	459 (23)	398 (18)	403 (19)	319 (10)	627 (35)	366 (13)	513 (29)	434 (21)	494 (27)	265 (3)	484 (26)
RST038_Kavadarci - kl	378 (13)	639 (35)	692 (36)	483 (26)	390 (14)	540 (32)	460 (22)	464 (23)	434 (21)	431 (19)	496 (27)	510 (30)	282 (4)	555 (33)	411 (16)	320 (6)	262 (2)	370 (11)
RST040_Shtip	352 (8)	641 (34)	487 (22)	529 (28)	461 (18)	477 (21)	440 (16)	514 (25)	366 (11)	422 (14)	473 (19)	637 (33)	417 (5)	726 (36)	514 (26)	440 (17)	301 (3)	365 (9)
RST041_Demir Kapija	458 (13)	743 (35)	657 (28)	495 (17)	385 (7)	685 (32)	544 (22)	517 (19)	598 (26)	449 (12)	482 (15)	535 (20)	384 (6)	637 (27)	440 (11)	485 (16)	359 (2)	540 (21)
RST042_Kochani - kl	384 (6)	693 (35)	554 (26)	561 (28)	529 (22)	561 (27)	506 (18)	448 (13)	476 (15)	545 (24)	360 (5)	651 (34)	420 (8)	493 (16)	561 (29)	589 (31)	430 (10)	509 (19)
RST043_Udovo	314 (1)	1008 (35)	748 (30)	766 (31)	490 (12)	669 (23)	487 (11)	707 (24)	514 (25)	366 (15)	422 (19)	473 (21)	637 (4)	726 (28)	514 (7)	440 (17)	301 (13)	836 (32)
RST044_Radovish - kl	359 (18)	801 (36)	692 (35)	637 (33)	482 (25)	631 (32)	548 (31)	529 (29)	471 (24)	495 (27)	536 (30)	646 (34)	354 (17)	486 (26)	403 (21)	321 (14)	220 (6)	325 (15)
RST045_Valandovo	387 (6)	930 (36)	783 (32)	718 (30)	409 (8)	815 (35)	608 (26)	567 (21)	554 (20)	511 (18)	516 (19)	725 (31)	331 (2)	600 (22)	496 (16)	496 (17)	487 (14)	702 (29)
RST047_Novi Dojran - kl	400 (3)	852 (36)	788 (33)	748 (31)	455 (7)	785 (32)	450 (6)	559 (14)	646 (25)	589 (18)	460 (8)	743 (30)	395 (2)	599 (20)	566 (16)	639 (24)	530 (13)	702 (28)
RST048_Hamzali	396 (7)	702 (36)	480 (18)	564 (25)	432 (11)	659 (33)	445 (12)	494 (20)	461 (16)	576 (26)	526 (22)	651 (32)	382 (6)	542 (24)	460 (15)	530 (23)	447 (13)	578 (27)
RST050_Berovo - kl	452 (5)	822 (36)	719 (33)	643 (23)	559 (15)	665 (26)	544 (14)	572 (17)	499 (11)	498 (10)	538 (13)	681 (28)	467 (7)	649 (24)	566 (16)	594 (20)	447 (4)	687 (30)
RST051_Novo Selo - strum	575 (17)	856 (33)	739 (30)	615 (21)	502 (8)	706 (28)	567 (15)	575 (16)	446 (5)	590 (20)	655 (23)	683 (25)	457 (6)	531 (12)	265 (1)	670 (24)	510 (9)	806 (32)
RST052_Crnik	651 (24)	969 (35)	1005 (36)	39 (1)	700 (27)	861 (34)	800 (31)	680 (26)	579 (19)	566 (16)	510 (11)	730 (28)	363 (5)	571 (17)	510 (12)	339 (3)	528 (13)	637 (23)
RST053_Sveti Naum	621 (7)	1047 (33)	1315 (35)	967 (28)	972 (29)	1464 (36)	989 (30)	860 (21)	813 (18)	1021 (32)	908 (24)	924 (25)	672 (9)	950 (27)	722 (13)	861 (22)	949 (26)	1157 (34)
RST054_Nakolec	396 (13)	921 (36)	907 (35)	663 (30)	554 (23)	672 (31)	538 (22)	694 (33)	656 (29)	674 (32)	558 (24)	643 (28)	472 (17)	537 (27)	507 (20)	483 (18)	463 (15)	504 (19)
RST055_Bach	374 (7)	757 (35)	705 (33)	508 (15)	349 (4)	437 (10)	464 (13)	560 (24)	444 (11)	473 (14)	342 (3)	630 (29)	372 (6)	586 (27)	571 (25)	577 (26)	382 (2)	523 (20)
Total Point	408	1275	1175	1029	606	1007	686	759	800	823	701	1013	280	912	591	651	322	868
Total Ranking	(9)	(36)	(35)	(31)	(13)	(28)	(17)	(21)	(23)	(24)	(19)	(29)	(2)	(26)	(12)	(15)	(4)	(25)

**Table 2.5 Average Annual Rainfall Depth for Successive  
1-Year Period for Drought Analysis (2/2)**

Station	1979	1980	1981	1982	1983	1984	1985	1986	1987	1988	1989	1990	1991	1992	1993	1994	1995	1996	Unit: mm
RST003_Romanovci	522 (21)	587 (27)	661 (32)	510 (17)	634 (29)	487 (14)	465 (9)	334 (3)	545 (23)	466 (10)	574 (26)	367 (4)	1632 (36)	483 (12)	420 (6)	438 (8)	848 (35)	283 (1)	
RST004_Vojnik	310 (3)	545 (25)	661 (33)	443 (13)	627 (30)	441 (12)	486 (19)	306 (2)	560 (26)	429 (11)	619 (28)	376 (7)	476 (17)	510 (22)	317 (4)	388 (8)	789 (36)	295 (1)	
RST005_Stracin	499 (19)	605 (30)	644 (35)	506 (20)	643 (34)	438 (12)	597 (29)	381 (6)	483 (16)	415 (10)	581 (28)	369 (5)	526 (22)	443 (14)	363 (4)	354 (3)	632 (32)	270 (1)	
RST006_German	592 (12)	741 (27)	866 (32)	709 (25)	809 (29)	491 (6)	673 (21)	385 (3)	731 (26)	633 (14)	1099 (35)	1101 (36)	786 (28)	401 (4)	71.7 (1)	653 (18)	703 (24)	603 (13)	
RST007_Tmovec	610 (21)	468 (8)	617 (22)	537 (15)	733 (31)	435 (7)	555 (17)	314 (5)	490 (10)	526 (14)	619 (23)	292 (4)	468 (9)	1288 (36)	221 (1)	231 (3)	503 (12)	226 (2)	
RST009_Kriva Palanka	705 (32)	664 (25)	698 (31)	539 (10)	620 (19)	451 (5)	595 (15)	408 (2)	649 (22)	514 (7)	772 (35)	444 (7)	612 (17)	567 (12)	360 (1)	442 (3)	803 (36)	660 (24)	
RST010_Sasa	801 (23)	807 (25)	703 (13)	763 (18)	620 (9)	644 (10)	798 (22)	561 (4)	766 (19)	672 (12)	871 (27)	612 (8)	729 (15)	450 (2)	483 (3)	574 (3)	942 (31)	410 (1)	
RST011_Debar - kl	1132 (35)	1114 (34)	1895 (36)	810 (22)	224 (4)	32 (3)	1.2 (1)	584 (11)	783 (20)	593 (12)	740 (17)	542 (9)	714 (15)	422 (6)	243 (5)	739 (16)	742 (18)	27.3 (2)	
RST013_Lazaropole	1313 (32)	1055 (22)	1517 (36)	925 (14)	1061 (23)	1022 (19)	1125 (27)	1039 (20)	947 (16)	898 (10)	909 (12)	850 (6)	975 (17)	866 (6)	817 (5)	782 (4)	1238 (30)	1162 (29)	
RST015_Ohrid	893 (32)	746 (29)	855 (31)	584 (10)	667 (19)	733 (23)	738 (25)	589 (13)	623 (15)	486 (5)	586 (12)	509 (7)	659 (17)	484 (4)	480 (3)	547 (8)	716 (21)	927 (34)	
RST016_Belchishte	957 (31)	885 (26)	825 (22)	617 (9)	544 (4)	815 (20)	934 (28)	717 (16)	775 (14)	649 (14)	637 (12)	612 (8)	648 (13)	510 (3)	591 (7)	574 (6)	847 (24)	428 (1)	
RST018_Kichevo - kl	918 (33)	679 (16)	768 (25)	551 (8)	670 (15)	583 (11)	827 (27)	637 (14)	687 (19)	543 (7)	681 (17)	457 (2)	702 (21)	542 (6)	527 (5)	298 (1)	460 (3)	568 (9)	
RST020_Cer	1090 (34)	902 (27)	943 (30)	719 (11)	873 (22)	830 (21)	1021 (32)	794 (18)	793 (17)	574 (5)	813 (19)	651 (10)	735 (13)	646 (8)	463 (2)	648 (7)	1066 (33)	386 (1)	
RST021_Kazhani	1086 (33)	895 (29)	866 (24)	620 (8)	63.3 (2)	196 (3)	52.1 (1)	396 (4)	744 (15)	647 (11)	845 (23)	672 (13)	904 (30)	728 (14)	646 (10)	767 (17)	883 (28)	406 (5)	
RST024_Krushevo	1109 (36)	889 (28)	975 (33)	788 (23)	909 (29)	651 (10)	792 (24)	731 (16)	774 (21)	650 (9)	773 (20)	637 (8)	779 (22)	669 (12)	606 (5)	605 (4)	620 (7)	959 (32)	
RST025_Bitola	836 (35)	621 (25)	842 (36)	690 (29)	734 (32)	510 (8)	608 (24)	483 (7)	562 (17)	455 (6)	570 (18)	516 (9)	693 (30)	560 (15)	426 (5)	541 (12)	666 (27)	675 (28)	
RST026_Topolchani	751 (35)	629 (27)	729 (34)	556 (20)	672 (31)	580 (23)	574 (22)	494 (15)	516 (17)	389 (7)	473 (12)	479 (14)	515 (16)	473 (13)	343 (3)	398 (8)	700 (33)	317 (2)	
RST027_Skopje	572 (29)	494 (21)	671 (34)	425 (11)	578 (30)	453 (14)	460 (15)	390 (7)	481 (19)	372 (3)	524 (22)	375 (4)	567 (28)	579 (31)	388 (6)	388 (5)	705 (35)	536 (23)	
RST028_Prilep	718 (34)	652 (30)	782 (36)	476 (15)	614 (28)	470 (14)	518 (21)	455 (12)	420 (7)	295 (1)	429 (9)	368 (4)	453 (11)	414 (6)	343 (2)	349 (3)	684 (31)	608 (27)	
RST030_Makovo	762 (34)	704 (31)	783 (35)	513 (14)	660 (27)	459 (7)	491 (11)	487 (9)	488 (10)	479 (8)	666 (28)	556 (19)	644 (25)	597 (22)	376 (3)	355 (2)	718 (32)	303 (1)	
RST033_Vladilovci	531 (28)	429 (20)	383 (11)	345 (6)	709 (34)	419 (19)	444 (22)	393 (15)	527 (27)	391 (14)	537 (29)	353 (7)	494 (24)	333 (5)	369 (10)	385 (12)	603 (31)	356 (8)	
RST034_Drenovo - Kav	667 (31)	742 (35)	707 (32)	561 (21)	605 (25)	348 (4)	427 (8)	440 (9)	573 (23)	475 (13)	507 (17)	366 (6)	477 (14)	463 (12)	262 (2)	339 (3)	628 (28)	252 (1)	
RST035_Sveti Nikole	547 (33)	556 (34)	546 (32)	507 (28)	463 (22)	457 (22)	146 (1)	288 (5)	379 (16)	372 (14)	430 (20)	257 (2)	392 (17)	313 (7)	291 (6)	313 (8)	531 (30)	270 (4)	
RST038_Kavadarci - kl	58.2 (1)	265 (3)	424 (18)	433 (20)	639 (34)	376 (12)	408 (15)	347 (10)	506 (29)	416 (17)	288 (5)	346 (9)	504 (28)	471 (24)	329 (7)	334 (8)	527 (31)	472 (25)	
RST040_Shtip	540 (30)	538 (29)	553 (31)	393 (13)	650 (35)	365 (10)	431 (15)	328 (7)	475 (20)	324 (6)	500 (23)	295 (2)	514 (27)	366 (12)	290 (1)	316 (4)	609 (32)	501 (24)	
RST041_Demir Kapija	664 (30)	668 (31)	694 (33)	557 (24)	824 (36)	417 (8)	433 (9)	367 (3)	713 (34)	560 (25)	439 (10)	553 (5)	311 (23)	370 (1)	477 (4)	664 (14)	500 (29)	18 (18)	
RST042_Kochani - kl	647 (33)	547 (25)	640 (32)	518 (21)	572 (30)	437 (11)	511 (20)	286 (1)	448 (12)	410 (7)	449 (14)	427 (9)	535 (23)	331 (3)	318 (2)	357 (4)	708 (36)	497 (17)	
RST043_Udovo	843 (33)	1031 (36)	643 (20)	862 (34)	647 (22)	598 (18)	567 (16)	469 (9)	728 (27)	447 (6)	484 (10)	468 (8)	539 (14)	432 (5)	324 (2)	729 (29)	720 (26)	366 (3)	
RST044_Radovish - kl	274 (9)	449 (23)	316 (12)	204 (3)	242 (8)	177 (2)	208 (4)	135 (1)	319 (13)	231 (7)	303 (10)	338 (16)	419 (22)	218 (5)	312 (11)	393 (19)	528 (28)	400 (20)	
RST045_Valandovo	680 (27)	785 (33)	603 (23)	604 (25)	691 (28)	453 (11)	469 (12)	324 (1)	604 (24)	378 (4)	397 (7)	491 (15)	422 (9)	340 (3)	386 (5)	472 (13)	797 (34)	427 (10)	
RST047_Novi Dojran - kl	630 (22)	818 (35)	615 (21)	790 (34)	579 (17)	561 (15)	496 (11)	387 (1)	724 (29)	430 (5)	424 (4)	637 (23)	519 (12)	463 (9)	479 (10)	593 (19)	675 (26)	699 (27)	
RST048_Hamzali	622 (30)	643 (31)	611 (29)	587 (28)	660 (34)	470 (17)	422 (9)	243 (2)	515 (21)	343 (4)	345 (5)	431 (10)	481 (19)	325 (3)	229 (1)	454 (14)	691 (35)	401 (8)	
RST050_Berovo - kl	698 (32)	766 (35)	690 (31)	635 (22)	686 (29)	477 (8)	576 (19)	389 (2)	657 (25)	520 (12)	594 (21)	460 (6)	574 (18)	431 (3)	380 (1)	486 (9)	728 (34)	678 (27)	
RST051_Novo Selo - strum	697 (26)	762 (31)	701 (27)	886 (35)	913 (36)	516 (10)	589 (19)	336 (2)	733 (29)	621 (22)	542 (13)	566 (14)	464 (7)	520 (11)	354 (3)	382 (18)	881 (34)	387 (4)	
RST052_Crnik	589 (20)	825 (32)	860 (33)	663 (25)	743 (29)	496 (8)	573 (18)	361 (4)	633 (22)	556 (15)	551 (14)	504 (10)	627 (21)	413 (7)	318 (2)	500 (9)	788 (30)	364 (6)	
RST053_Sveti Naum	1020 (31)	722 (14)	837 (19)	547 (5)	763 (15)	683 (10)	841 (20)	712 (12)	655 (8)	488 (3)	693 (11)	572 (6)	806 (17)	519 (4)	422 (2)	888 (23)	799 (16)	394 (1)	
RST054_Nakolec	604 (26)	578 (25)	328 (10)	376 (12)	162 (6)	76 (2)	276 (9)	534 (21)	703 (34)	80.5 (3)	57.4 (1)	469 (16)	432 (14)	173 (7)	161 (5)	231 (8)	347 (11)	149 (4)	
RST055_Bach	699 (32)	721 (34)	779 (37)	594 (28)	665 (31)	354 (5)	514 (18)	532 (21)	521 (19)	451 (12)	662 (30)	513 (17)	539 (22)	377 (8)	338 (2)	22.2 (1)	540 (21)	510 (16)	
Total Point	1038	1018	1060	696	920	434	635	313	765	365	667	362	733	379	157	358	1042	460	
Total Ranking	(32)	(30)	(34)	(18)	(27)	(10)	(14)	(3)	(22)	(7)	(16)	(6)	(20)	(8)	(1)	(5)	(33)	(11)	



**Table 2.6 Mean Monthly Discharge for the Period 1961-1996**

Unit: m<sup>3</sup>/sec

No.	Station	Jan	Feb	Mar	Apr	May	Jun	Jul	Aug	Sep	Oct	Nov	Dec	Average
<b>B1: Vardar</b>														
1	ST004_Sarakinci	19.6	21.3	22.1	27.0	30.4	19.8	11.9	10.5	13.9	16.0	19.9	20.0	19.4
2	ST006_Radusha	24.2	26.5	27.5	32.9	39.4	25.6	13.4	11.4	16.2	19.1	24.1	25.1	23.8
3	ST008_Skopje	61.1	69.4	82.2	99.3	101.5	62.9	32.4	23.8	29.8	35.3	51.4	59.4	59.1
4	ST010_Veles	77.1	93.5	109.2	128.8	127.8	77.5	39.8	27.2	34.4	43.0	63.9	76.1	74.9
5	ST014_D. Kapija	140.7	178.1	197.6	218.3	196.6	118.5	58.5	43.7	57.0	70.0	108.6	133.1	126.7
6	ST016_Gevgelija	151.3	192.4	213.8	236.5	212.7	126.9	61.0	44.8	59.4	73.7	116.0	143.0	136.0
<b>B2: Treska</b>														
7	ST023_M. Brod	12.3	15.2	18.5	22.7	17.5	8.3	4.4	2.9	3.2	4.3	8.4	12.2	10.8
8	ST025_Zdunje	19.3	23.6	29.2	36.6	33.1	17.2	8.5	5.6	6.1	7.4	13.8	19.5	18.3
9	ST026_S. Bog.	24.7	28.7	37.5	46.3	41.3	21.9	11.6	7.9	8.5	10.0	17.7	24.1	23.3
<b>B3: Pchinja</b>														
10	ST034_Pelince	4.7	6.3	8.5	9.1	7.2	4.6	2.6	1.3	1.4	2.1	3.0	4.1	4.6
11	ST038_Trnovec	3.7	4.8	6.4	7.8	6.9	4.1	2.3	1.4	1.5	2.0	2.9	3.6	4.0
12	ST041_Kumanovo	0.5	0.7	0.8	0.8	0.7	0.5	0.3	0.2	0.2	0.3	0.4	0.5	0.5
13	ST035_Kat. Banja	12.2	17.2	22.2	23.6	19.6	11.3	5.3	2.5	3.4	5.1	8.5	11.8	11.9
<b>B4: Bregalnica</b>														
14	ST050_Ochi Pale	5.2	8.3	8.0	8.7	6.3	3.6	1.8	1.5	1.5	2.1	3.3	5.1	4.6
15	ST055_Laki	1.2	1.5	1.4	1.5	1.2	0.8	0.5	0.3	0.3	0.5	0.7	1.0	0.9
16	ST054_Kamenica	1.3	1.7	1.8	2.2	1.8	1.3	0.9	0.8	0.8	0.9	1.1	1.3	1.3
17	ST052_Shtip	12.6	19.5	19.0	19.0	14.6	9.1	5.1	4.2	5.4	5.7	8.7	11.8	11.2
<b>B5: Crna</b>														
18	ST060_Dolenci	3.1	3.6	4.6	4.4	3.4	2.0	1.3	0.9	0.8	0.9	1.8	2.7	2.5
19	ST064_Skochivir	26.1	37.0	42.9	38.7	30.7	12.4	4.9	2.8	3.7	5.9	15.3	23.8	20.3
20	ST065_Ras. Most	28.3	39.9	46.2	41.8	33.7	14.2	6.2	3.5	4.6	7.0	17.1	26.3	22.4
<b>B6: Strumica</b>														
21	ST103_Sushevo	1.9	2.6	3.0	3.1	2.5	1.5	0.7	0.4	0.5	0.7	1.2	1.7	1.6
22	ST104_Novo Selo	4.8	7.7	7.9	6.5	4.8	2.7	1.1	0.5	0.7	1.4	3.2	4.8	3.8
<b>B7: Crn Drim</b>														
23	ST098_Bosh. Most	17.6	16.7	19.4	37.9	49.3	21.5	9.3	6.6	7.2	7.7	14.1	17.8	18.7
24	ST088_Lozhani	23.2	24.4	26.4	29.8	31.8	25.9	20.4	18.9	18.6	18.7	20.8	21.7	23.4

Table 2.7 Geology at Sites of Proposed or Designed Dams

	Dam site	Tectonic zone	River Basin	Planned dam type	Planned dam Height	Bedrock	Weathering overburden	Rock/Earth material
1.	Razloveci	SMM	Upper Bregalnica River, 15km south of Delchevo	Rockfill	67.5m	-Granodiorite on the left bank -Amphibolite on the right bank	(1) Not exceeding 20 Lugeon unit in upper part of the slopes (20-35m thick) (2) Less than 10 Lugeon unit in deeper zone	-Rockfill materials: granodiorite bed near the damsite -Core material : weathering parts of the bedrock -Concrete aggregates and filter material : the riverbed downstream or by crushing quarry rock
2.	Ciflik	SMM	Upper Bregalnica River, 2km west of Delchevo	Earthfill	33m	Palaeozoic schist	Several meters	-On nearby hills
3.	Paligrad	PHA	Kadina River, 18km south of Skopje	Rockfill	91m	Muscovite-biotite gneiss and lenticular intercalations of marble on the right bank	Very thin or none	-Rockfill materials: gneiss or marble within 10km from the damsite -Earth core material : highly weathered rock zone -Concrete aggregates and filter material: Markova River channel more than 10km north -Concrete aggregates : a river deposit or by crushing quarry rock.
4.	Chebron	PHA	Orna River, 26km southeast of Prilep	Concrete arch or Concrete-face rockfill	192.5m	-Granite and granitic muscovite gneiss -Deformation modulus of 50,000 to 95,000 kg/cm <sup>2</sup> . -Modulus of elasticity of 80,000 to 150,000 kg/cm <sup>2</sup> .	Not very deep (less than 10 Lugeon unit) weak foliation of superficial weathered gneiss at places	
5.	Konsko	VZ	Konsko river, 13km west of Gevgelija	Rockfill	77m	Gabbro	-Depths of 5 to 20m -Depth of 50m -High Lugeon values of 10 to 24	-Rock material and earth material : gabbro and highly weathered rock zone -Concrete aggregates and filter materials in the Scouska River near the railway at Gevgelija -Rock material : difficult in the vicinity
6.	Podares	SMM	Plavija river, 8km east of Radovish	Rockfill	90m	Paleozoic schists	-Less than 10 Lugeon unit in zone deep than 5m	
7.	Knezevo	SMM	Zletovska River	Rockfill	75m	-Massive gneiss		-Earth core material (300,000m <sup>3</sup> ) : 20km from the damsite or by crushing quarry rock of the schists near the reservoir area and andesite at 6km downstream. -Concrete aggregates and filter materials (200,000 m <sup>3</sup> ) : -ditto-
8.	Slupchanska	VZ	Slupchanska River, a right side tributary of the Pčinja River	Rockfill	50m	-Gabbro and diabase		-Gabbro and diabase or granodiorite near the damsite -Concrete aggregates and filter materials : in the channels of the Lipkavska River and the Slupchanska River at their outlet from the mountain zone to the plain.
9.	Kiseliska	SMM	Kiseliska River 700m upstream of its confluence to the Kriva River	Rockfill	77m	-Mica schist and albite-quartz-chlorite schist	-Generally thin overburden, but thick slopewashes at places	-Rockfill material : schist near the damsite or andesite and latite (trachyandesite) within 10km -Earth core material and sand/gravel deposits : on the Kriva River downstream from Kriva Palanka
10.	Dlabochika	SMM	Kriva River, 1.7km downstream of Cankina Maala	Rockfill (most suitable)	50m	Schist with foliation	-Deep surface weathering (over 10m of core trench excavation)	-Each core material : thick weathered rock zone in high parts of the slopes -Rockfill material : abundant schists near the damsite -Concrete aggregates and filter materials : river deposit in a wide valley downstream of andesite quarry rock at 10km apart
11.	Vakuf	SMM	Kriva River, near the village of Vakuf Maala, 11km west-northwest of Kratovo	Rockfill	75m	-Andesite	-A group of joints with a strike of N70E and a dip of 70 degrees (rather low Lugeon values not exceeding 20 and lower than 5 for the most part)	-Earth core : sandy clay at 1.8 to 5.5km upstream of the dam axis -Rockfill : andesite near the damsite -Filter : sand and gravel -Concrete : in a wide valley floor 3km upstream of the damsite

**Table 2.8 Rural Population Change for the Period 1961-1991**

No	Municipality	Number of the rural population		
		1961	1991	Change rate (%)
1	Skopje	72,958	105,036 (+)	144.0
2	Gostivar	56,214	86,033 (+)	160.8
3	Tetovo	79,468	139,341 (+)	169.0
4	Kichevo	29,559	29,352 (+)	99.3
5	M. Brod	18,034	8,412	46.6
6	Kumanovo	69,158	60,136 (+)	86.9
7	Kratovo	13,501	4,858	36.0
8	Kriva Palanka	28,692	14,302	49.8
9	Veles	30,827	22,847 (+)	74.1
10	Sveti Nikole	18,749	8,589	45.8
11	Shtip	16,175	9,230	57.0
12	Probishtip	13,444	8,509	63.3
13	Kochani	27,125	22,831	84.1
14	Vinica	10,407	9,479	91.1
15	Delchevo	15,766	14,902	94.5
16	Berovo	13,932	10,521	75.5
17	Demir Hisar	17,218	12,078	70.1
18	Kriushevo	9,268	7,154	77.2
19	Bitola	62,580	39,120	62.5
20	Prilep	55,757	28,439	51.0
21	Kavadarci	19,572	13,601	69.5
22	Negotino	11,595	10,890	93.9
23	Valandovo	6,583	7,846	119.2
24	Gevgelija	17,087	20,138	117.8
25	Ohrid	30,803	23,931	77.7
26	Struga	35,560	47,608 (+)	133.9
27	Debar	9,406	11,166 (+)	118.7
28	Resen	17,906	13,566	75.8
29	Radovish	16,112	15,797	98.0
30	Strumica	49,542	60,093	121.3
	Total:	863,070	865,805	100.3

(+) The data for the municipalities including albanian population are estimated and are not definitive. It might be possible that the real participation of albanian population is much bigger than the presented numbers in the table.

Data source : RIHP

Table 2.9 Regional Characteristics of Domestic Migration for the Period 1961-1991

No.	Former municipality	Total number of villages	Number of disappeared villages			Change of number of the villages in the period 1971-1991				
			1961-1971	1971-1991	Total	Decreased		Constant	Increased	
						Less than 20 villagers in 1991	Over 20 villagers in 1991			Total
1	Skopje	125	1	1	2	6	39	45	18	60
2	Gostivar	90	5	0	5	13	34	47	6	32
3	Tetovo	92	0	4	4	3	17	20	5	63
4	Kichevo	80	0	0	0	11	45	56	2	22
5	M. Brod	53	0	0	0	1	46	47	0	6
6	Kumanovo	109	0	5	5	4	72	76	6	22
7	Kratovo	30	0	0	0	3	26	29	0	1
8	Kriva Palanka	51	0	0	0	0	47	47	0	4
9	Veles	88	1	8	9	23	37	60	3	16
10	Sveti Nikole	44	0	3	3	11	27	38	2	1
11	Shtip	71	11	2	13	15	26	41	2	15
12	Probishtip	36	0	0	0	1	32	33	0	3
13	Kochani	45	0	2	2	7	28	35	1	7
14	Vinica	15	0	0	0	0	10	10	1	4
15	Delchevo	29	0	0	0	0	25	25	1	3
16	Berovo	15	0	0	0	0	14	14	1	0
17	Demir Hisar	38	0	1	1	2	30	32	0	5
18	Krushevo	23	0	1	1	0	17	17	1	4
19	Bitola	128	5	3	8	13	94	107	3	10
20	Prilep	106	1	4	5	13	83	96	2	3
21	Kavadarci	49	0	3	3	12	29	41	0	5
22	Negotino	33	6	2	8	4	13	17	2	6
23	Valandovo	28	6	3	9	3	2	5	1	13
24	Gevgelija	34	1	2	3	2	12	14	3	14
25	Ohrid	57	0	0	0	5	40	45	1	11
26	Struga	51	3	4	7	4	13	17	3	24
27	Debar	39	4	4	8	5	5	10	2	19
28	Resen	43	0	4	4	2	30	32	2	5
29	Radovish	49	8	4	12	5	14	19	4	14
30	Strumica	74	3	0	3	4	22	26	3	42
	Total:	1725	55	60	115	172	929	1101	75	434

Data source : RIHP

**Table 2.10 Improvement of Coverage by Network Service at Home in Villages for the Period 1971-1991**

No.	Name of the village	Number of villages 1991	Number of the population		Change rate (%)	Number of the population, 1971			Number of villages and population, 1991			
			1971	1991		home / level 3	Private / level 1	public / level 2	villages	home / level 3 population	Other types population	
											villages	population
1	Skopje	125	72,958	105,036	138.2	1,349	29,304	45,337	49	45,861	76	59,175
2	Gostivar	90	65,734	86,033	137.5	2,378	30,934	32,422	51	67,313	39	18,720
3	Tetovo	92	95,465	139,341	140.7	6,030	57,905	31,530	68	116,363	24	22,978
4	Kichevo	80	28,795	29,352	101.9	235	11,965	16,595	31	12,242	49	17,110
5	M. Brod	53	14,592	8,412	57.7	35	2,105	12,452	25	6,950	28	1,462
6	Kumanovo	109	67,068	60,136	89.7	1,123	30,611	35,334	17	20,603	92	39,533
7	Kratovo	30	11,349	4,858	42.8	58	501	10,790	2	775	28	4,083
8	Kriva Palanka	51	24,878	14,302	57.5	461	2,515	21,902	33	11,495	18	2,807
9	Veles	89	24,773	22,847	92.2	656	2,774	21,343	23	16,351	66	6,496
10	Sveti Nikole	44	13,702	8,589	62.7	50	1,999	11,653	2	1,893	42	6,696
11	Shtip	71	13,451	9,230	68.6	220	2,62	10,611	16	6,744	55	2,486
12	Probishtip	36	12,018	8,509	70.8	3,405	2,693	5,920	12	6,890	24	1,619
13	Kochani	45	26,563	22,831	85.9	228	5,301	21,034	22	17,993	23	4,838
14	Vinica	15	10,452	9,479	90.7	140	1,107	9,205	14	9,005	1	474
15	Delchevo	29	16,253	14,902	91.7	725	2,293	13,235	27	13,512	2	1,390
16	Berovo	15	12,979	10,521	81.1	1,335	2,775	8,869	15	10,521	0	0
17	Demir Hisar	37	15,653	12,078	77.2	1,085	4,187	10,381	27	11,266	10	812
18	Krushevo	23	8,538	7,154	83.8	-	3,369	5,169	9	5,328	14	1,826
19	Bitola	128	59,477	39,120	65.8	1,543	15,477	42,452	74	31,961	54	7,159
20	Prilep	106	45,687	28,439	62.2	505	16,008	29,174	21	9,383	85	19,056
21	Kavadarci	49	16,958	13,601	80.2	388	4,987	11,583	17	12,927	32	674
22	Negotino	33	10,645	10,890	102.3	237	3,616	6,792	14	9,309	19	1,581
23	Valandovo	28	6,421	7,846	122.2	209	2,854	3,358	10	6,913	18	933
24	Gevgelija	34	18,070	20,138	111.4	3,898	7,612	6,560	18	18,505	16	1,633
25	Ohrid	57	27,650	23,931	86.5	1,470	9,438	16,742	36	20,524	21	3,407
26	Struga	51	37,363	47,608	127.4	5,064	15,468	16,831	38	46,754	13	854
27	Debar	39	9,644	11,166	115.8	-	390	9,254	20	8,220	19	2,946
28	Resen	43	16,698	13,566	81.2	449	7,564	8,685	31	12,057	12	1,509
29	Radovish	49	16,286	15,797	97	210	4,302	11,774	19	13,461	30	2,336
30	Strumica	74	53,874	60,093	111.5	767	14,851	38,256	27	29,944	47	30,149
Total:		1725	857,026	865,805	101	34,253	294,535	525,238	770	601,063	956	264,742
Total, %		100%	100%	100%		4.00%	34.70%	61.30%	44.60%	69.40%	55.40%	30.60%

Data source : RHIP

Table 2.11 Condition of Rural Water Supply in 1991

No.	Municipality	Total population 1991	Number of villages 1991	Supplied by city water meters		Network service at home				Without network service at home			
				Number of water meters		with water meters		Non-chlorinated		Number of		villages	
				villages	population	villages	population	villages	population	villages	population	villages	population
1	Skopje (5 municip.)	105,036	125	5	14,000	13	16,564	31	15,297	44	31,861	76	59,175
2	Gostivar	86,033	90	6	11,575	12	34,195	33	21,543	45	55,738	39	18,720
3	Tetovo	139,341	92	1	4,500	27	52,923	40	58,940	67	111,863	24	22,978
4	Kichevo	29,352	80	6	3,533	3	5,316	22	3,393	25	8,709	49	17,110
5	M. Brod	8,412	53	1	174	3	420	21	6,356	24	6,776	28	1,462
6	Kumanovo	60,136	109	3	4,899	2	1,616	12	14,088	14	15,704	92	39,533
7	Kratovo	4,858	30	0	0	1	493	1	282	2	775	28	4,083
8	Kriva Palanka	14,302	51	2	1,131	0	0	31	10,364	31	10,364	18	2,807
9	Veles	22,847	89	1	1,816	8	7,513	14	7,022	22	14,535	66	6,496
10	Sveti Nikole	8,589	44	0	0	2	1,893	0	0	2	1,893	42	6,696
11	Shtip	9,230	71	2	1,822	6	3,069	8	1,853	14	4,922	55	2,486
12	Probitip	8,509	36	2	1,760	2	2,566	8	2,564	10	5,130	24	1,619
13	Kochari	22,831	45	10	10,882	3	2,128	9	4,983	12	7,111	23	4,838
14	Vinica	9,479	15	0	0	12	8,386	2	619	14	9,005	1	474
15	Delchevo	14,902	29	1	67	1	4,855	25	8,590	26	13,445	2	1,390
16	Berovo	10,521	15	1	826	7	5,977	7	3,718	14	9,695	0	0
17	Demir Hisar	12,078	37	2	722	0	0	25	10,544	25	10,544	10	812
18	Krushevo	7,154	23	1	466	0	0	8	4,862	8	4,862	14	1,826
19	Bitola	39,120	128	8	7,419	12	9,365	54	15,177	66	24,542	54	7,159
20	Prilep	28,439	106	3	3,327	9	4,855	9	1,201	18	6,056	85	19,056
21	Kavadarci	13,601	49	9	9,276	5	1,745	3	1,906	8	3,651	32	674
22	Negotino	10,890	33	3	2,340	1	3,388	10	3,581	11	6,969	19	1,581
23	Valandovo	7,846	28	1	267	7	6,109	2	537	9	6,646	18	933
24	Gevgelija	20,138	34	4	3,802	14	14,703	0	0	14	14,703	16	1,633
25	Ohrid	23,931	57	6	6,981	13	8,133	17	5,410	30	13,543	21	3,407
26	Struga	47,608	51	17	22,470	9	18,218	12	6,066	21	24,284	13	854
27	Debar	11,166	39	2	767	3	2,226	15	5,227	18	7,453	19	2,946
28	Resen	13,566	43	8	4,548	3	574	20	6,935	23	7,509	12	1,509
29	Radovish	15,797	49	3	2,669	8	7,130	8	3,662	16	10,792	30	2,336
30	Strumica	60,093	74	0	0	11	17,145	16	12,799	27	29,944	47	30,149
	Total:	865,805	1,725	108	121,409	197	241,504	463	238,150	660	479,654	957	264,742

Data source : RIHP

**Table 2.12 Numbers of Villages and Population Required for Development and Improvement by Former Municipality**

No	Name	Former Municipality		Required for development and improvement			Without network service at home						Village network service at home with water quality problem					
		No. of administrative divisions	Population 1997	Number of villages	Population	Number of villages	Over 100 population		Less than 100		Total	Number of villages	Population	Over 100 population		Less than 100		
							Number of villages	Population	Number of villages	Population				Number of villages	Population	Number of villages	Population	
1	Skopje	160	558,213	81	535,191	68	383,961	49	379,421	19	454	13	15,123	11	1,505	2	72	
2	Gostivar	93	115,276	33	164,911	31	162,451	11	155,811	20	664	2	246	1	191	1	55	
3	Tetovo	92	179,883	17	198,861	17	198,861	16	198,861	1	0	0	0	0	0	0	0	
4	Kichevo	80	53,741	47	136,161	46	136,061	23	129,121	23	694	1	10	0	0	1	10	
5	Makedonski Brod	55	12,152	30	20,501	26	16,821	5	704	21	978	4	368	2	244	2	124	
6	Kumanovo	110	131,558	82	347,671	80	323,451	44	301,961	36	2,149	2	2,422	2	2,422	0	0	
7	Kratovo	31	10,905	12	783	12	783	2	344	10	439	0	0	0	0	0	0	
8	Kriva Palanka	52	25,307	18	25,211	17	24,261	8	19,511	9	475	1	95	0	0	1	95	
9	Veles	90	66,829	45	354,511	45	354,511	12	287,311	33	672	0	0	0	0	0	0	
10	Sveti Nikole	45	21,616	23	14,771	22	14,091	4	10,201	18	389	1	68	0	0	1	68	
11	Ship	73	51,353	34	159,411	32	121,911	4	528	28	691	2	375	2	375	0	0	
12	Probitship	37	16,766	15	15,341	13	909	4	662	9	247	2	625	1	541	1	84	
13	Kochani	45	48,676	18	41,871	18	41,871	7	38,791	11	308	0	0	0	0	0	0	
14	Vinica	16	19,438	0	0	0	0	0	0	0	0	0	0	0	0	0	0	
15	Delchevo	31	26,149	2	206	2	206	1	127	1	79	0	0	0	0	0	0	
16	Berovo	16	19,913	6	49,481	0	0	0	0	0	0	6	4,948	6	4,948	0	0	
17	Demir Hisar	41	10,456	9	34,911	9	34,911	0	0	9	34,911	0	0	0	0	0	0	
18	Krushevo	22	12,134	7	8,511	6	6,991	2	507	4	192	1	152	1	152	0	0	
19	Bitola	130	108,789	56	78,201	54	75,461	23	66,831	31	863	2	274	2	274	0	0	
20	Prilep	107	95,310	74	139,091	73	136,191	34	122,081	39	14,111	1	290	1	290	0	0	
21	Kavadarci	50	42,494	19	206	19	206	0	0	19	206	0	0	0	0	0	0	
22	Negotino	34	23,542	12	315	12	315	1	156	11	159	0	0	0	0	0	0	
23	Valandovo	29	12,271	6	13,791	4	160	1	152	3	8	2	1,219	2	1,219	0	0	
24	Gevgelija	34	34,983	9	15,071	9	15,071	5	13,931	4	114	0	0	0	0	0	0	
25	Ohrid	63	61,533	16	11,811	13	10,171	5	702	8	315	3	164	1	104	2	60	
26	Struga	52	65,216	7	7,911	6	6,351	2	533	4	102	1	156	1	156	0	0	
27	Debar	38	24,995	6	5,561	5	3,661	2	2,631	3	103	1	190	1	190	0	0	
28	Resen	44	17,708	7	11,591	6	8,351	4	749	2	86	1	324	1	324	0	0	
29	Radovish	50	31,237	13	14,771	13	14,771	4	1,227	9	250	0	0	0	0	0	0	
30	Strumica	75	92,955	36	26,032	35	25,706	27	25,442	8	264	1	326	1	326	0	0	
	TOTAL	1,795	1,991,398	740	218,656	693	191,281	300	178,620	393	12,661	47	27,375	36	26,807	11	568	

**Table 2.13 Number of Villages and Population Without Network Service at Home**

No	Name	Former Municipality			Without network service at home			Ranking by number of			Total score	Overall ranking			
		No. of administrative divisions	Total population 1997	Rural population 1997	Number of villages	Population	Number of villages	Population	Villages	Population					
1	Skopje	160	558213	223,285	68	38396	42.2	17.2	3	1	9	12	25	5	
2	Gostivar	93	115276	46,110	31	16245	33.3	35.2	9	5	16	5	35	8	
3	Tetovo	92	179883	71,953	17	19886	18.5	27.6	14	4	23	7	48	12	
4	Kichevo	80	53741	21,496	46	13606	57.5	63.3	5	7	3	2	17	3	
5	Makedonski Brod	55	12,152	4,861	26	1682	47.3	34.6	10	12	6	6	34	7	
6	Kumanovo	110	131,558	52,623	80	32345	72.7	61.5	1	2	1	3	7	1	
7	Kratovo	31	10,905	4,362	12	783	38.7	18.0	19	20	12	10	61	15	
8	Kriva Palanka	52	25307	10,123	17	2426	32.7	24.0	14	11	17	8	50	13	
9	Veles	90	66,829	26,732	45	3545	50.0	13.3	6	10	4	16	36	9	
10	Sveti Nikole	45	21,616	8,646	22	1409	48.9	16.3	11	15	5	13	44	11	
11	Ship	73	51,353	20,541	32	1219	43.8	5.9	8	16	8	21	53	14	
12	Probishtip	37	16,766	6,706	13	909	35.1	13.6	16	18	15	15	64	16	
13	Kochani	45	48,676	19,470	18	4187	40.0	21.5	13	9	11	9	42	10	
14	Vinica	16	19,438	7,775	0	0	0.0	0.0	29	29	29	29	116	29	
15	Delchevo	31	26,149	10,460	2	206	6.5	2.0	28	26	28	27	109	28	
16	Berovo	16	19,913	7,965	0	0	0.0	0.0	29	29	29	30	117	30	
17	Demir Hisar	41	10,456	4,182	9	349	22.0	8.3	21	24	21	20	86	24	
18	Krushevo	22	12,134	4,854	6	699	27.3	14.4	23	21	18	14	76	19	
19	Bitola	130	108,789	43,516	54	7546	41.5	17.3	4	8	10	11	33	6	
20	Prilep	107	95,310	38,124	73	13619	68.2	35.7	2	6	2	4	14	2	
21	Kavadarci	50	42,494	16,998	19	206	38.0	1.2	12	12	13	28	79	21	
22	Negotino	34	23,542	9,417	12	315	35.3	3.3	19	25	14	24	82	22	
23	Valandovo	29	12,271	4,908	4	160	13.8	3.3	27	28	24	25	104	27	
24	Gevgelija	34	34,983	13,993	9	1507	26.5	10.8	21	13	19	19	72	18	
25	Ohrid	63	61,533	24,613	13	1017	20.6	4.1	16	17	22	22	77	20	
26	Struga	52	65,216	26,086	6	635	11.5	2.4	23	22	27	26	98	26	
27	Debar	38	24,995	9,998	5	366	13.2	3.7	26	26	23	23	98	25	
28	Resen	44	17,708	7,083	6	835	13.6	11.8	23	19	25	18	85	23	
29	Radovish	50	31,237	12,495	13	1477	26.0	11.8	16	14	20	17	67	17	
30	Strumica	75	92,955	37,182	35	25706	46.7	69.1	7	3	7	1	18	4	
	TOTAL	1,795	1,991,398	796,557	693	191,281									



Table 2.14 Economically Underdeveloped Areas/Divisions (1/2)

Former Municipalities	Municipalities	Number of settlements		
		Total	under-developed	rest
Skopje City of Skopje	Gazi Baba	15	0	15
	Gjorche Petrov	8	1	7
	Karposh	6	0	6
	Kisela Voda	6	0	6
	Centar	1	0	1
	Chair	6	0	6
	Shuto Orizari	3	0	3
	Arachinovo	5	0	5
	Zelenikovo	16	4	12
	Ilinden	12	0	12
	Kondovo	7	1	6
	Petrovec	16	8	8
	Saraj	16	0	16
	Sopishte	13	3	10
	Studenchani	19	7	12
Chucher-Sandevo	12	6	6	
Gostivar	Vrapchishte	7	1	6
	Vrutok	8	3	5
	Gostivar	6	0	6
	D.Banjica	7	2	5
	Mavrovi Anovi	25	24	1
	Negotino (Poloshko)	8	3	5
	Rostusha	21	18	3
	Srbinovo	7	5	2
	Chegrane	4	1	3
Tetovo	Bogovinje	6	2	4
	Brvenica	10	1	9
	Vratnica	6	3	3
	Zhelino	18	3	15
	Jegunovce	11	0	11
	Kamenjane	8	2	6
	Tearce	13	4	9
	Tetovo	8	2	6
	Djepchishte	6	3	3
	Shipkovicica	6	6	0
Kichevo	Vraneshtica	15	5	10
	Drugovo	28	19	9
	Zajas	13	6	7
	Kichevo	7	2	5
	Oslomej	17	8	9
Makedonski Brod	Makedonski Brod	25	6	19
	Plasnica	4	0	4
	Samokov	26	18	8
Kumanovo	Klechevce	14	5	9
	Kumanovo	30	6	24
	Lipkovo	22	11	11
	Orashac	12	9	3
	Staro Nagorichane	32	23	9
Kratovo	Kratovo	31	9	22
Kriva Palanka	Kriva Palanka	34	29	5
	Rankovce	18	6	12
Veles	Bogomila	13	13	0
	Veles	35	4	31
	Gradsko	16	8	8
	Izvor	11	5	6
	Chashka	15	2	13
Sveti Nikole	Lozovo	11	0	11
	Sveti Nikole	34	12	22
Shtip	Karbinci	29	10	19
	Shtip	44	18	26
Probishtip	Zletovo	10	3	7
	Probishtip	27	1	26

Table 2.14 Economically Underdeveloped Areas/Divisions (2/2)

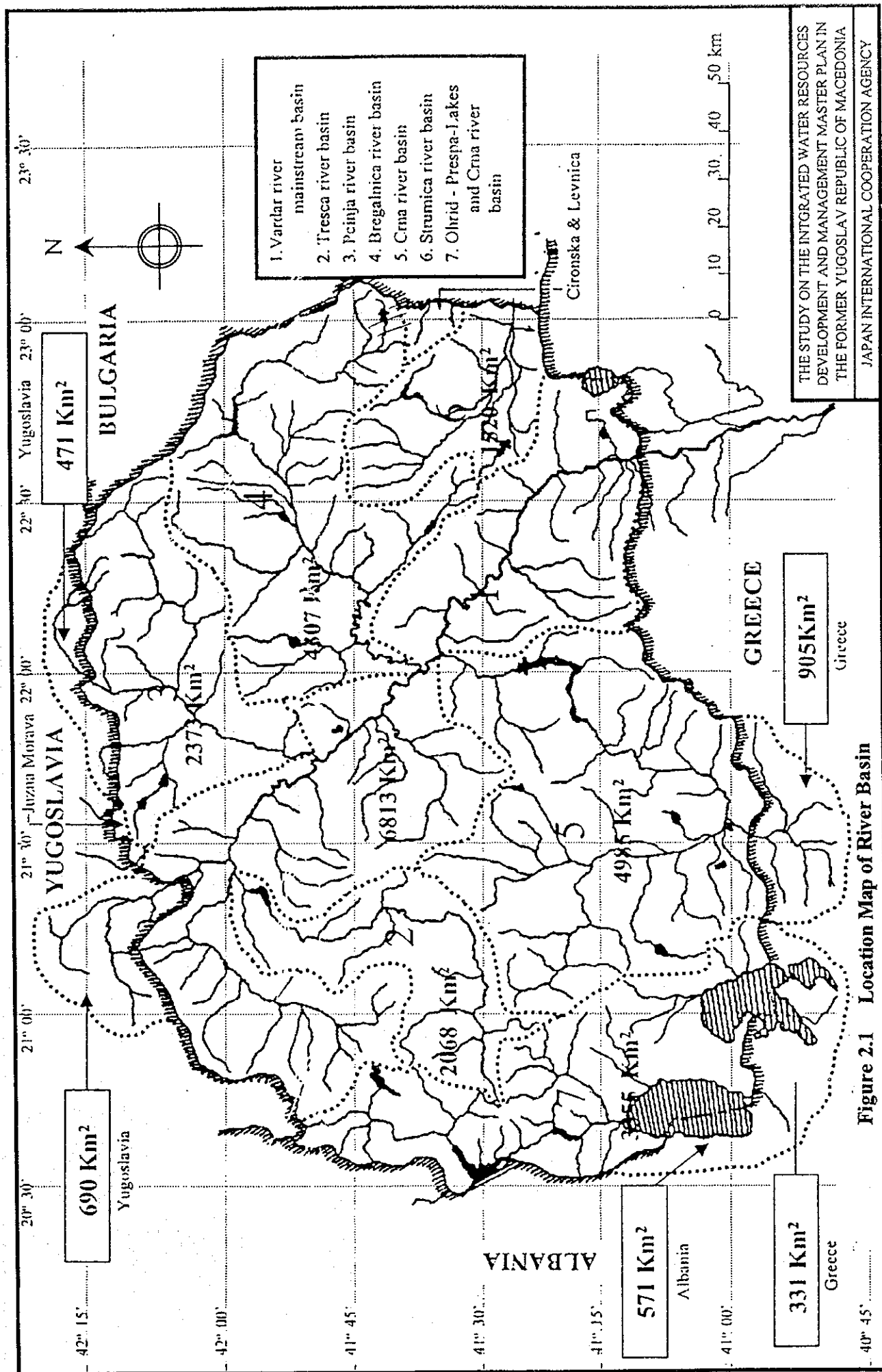
Former Municipalities	Municipalities	Number of settlements		
		Total	under-developed	rest
Kochani	Zrnovci	3	0	3
	Kochani	18	8	10
	Obleshevo	8	0	8
	Orizari	10	7	3
	Cheshinovo	6	0	6
Vinica	Blatec	2	0	2
	Vinica	14	3	11
Delchevo	Delchevo	22	17	5
	Makedonska Kamenica	9	4	5
Berovo	Berovo	9	6	3
	Pehchevo	7	5	2
Demir Hisar	Demir Hisar	23	4	19
	Sopotnica	18	11	7
Krushevo	Zhitoshe	3	0	3
	Krushevo	19	13	6
Bitola	Bach	10	10	0
	Bistrica	21	8	13
	Bitola	19	6	13
	Dobrushevo	10	5	5
	Kukurechani	13	2	11
	Mogila	13	0	13
	Novaci	19	7	12
	Staravina	12	12	0
	Capari	13	10	3
Prilep	Vitolishte	14	14	0
	Dolneni	35	0	35
	Krivogashtani	12	0	12
	Prilep	32	7	25
	Topolchani	14	3	11
Kavadarci	Kavadarci	24	1	23
	Konopishte	16	15	1
	Rosoman	10	0	10
Negotino	Demir Kapija	15	7	8
	Negotino	19	6	13
Valandovo	Valandovo	29	15	14
Gevgelija	Bogdanci	4	1	3
	Gevgelija	11	3	8
	Miravci	6	0	6
	Star Dojran	13	9	4
Ohrid	Belchishta	24	23	1
	Kosel	12	9	3
	Mesheishta	6	0	6
	Ohrid	21	6	15
Struga	Vevchani	1	1	0
	Veleshta	4	0	4
	Delogozhdi	9	3	6
	Labunishta	4	3	1
	Lukovo	16	15	1
	Struga	18	6	12
Debar	Debar	17	11	6
	Centar Zhupa	21	15	6
Resen	Resen	44	14	30
Radovish	Konche	14	14	0
	Podaresh	5	1	4
	Radovish	31	18	13
Strumica	Bosilovo	15	0	15
	Vasilevo	18	3	15
	Kuklish	10	3	7
	Murtino	4	0	4
	Novo Selo	17	8	9
	Strumica	11	3	8
<b>TOTAL</b>		<b>1795</b>	<b>726</b>	<b>1069</b>

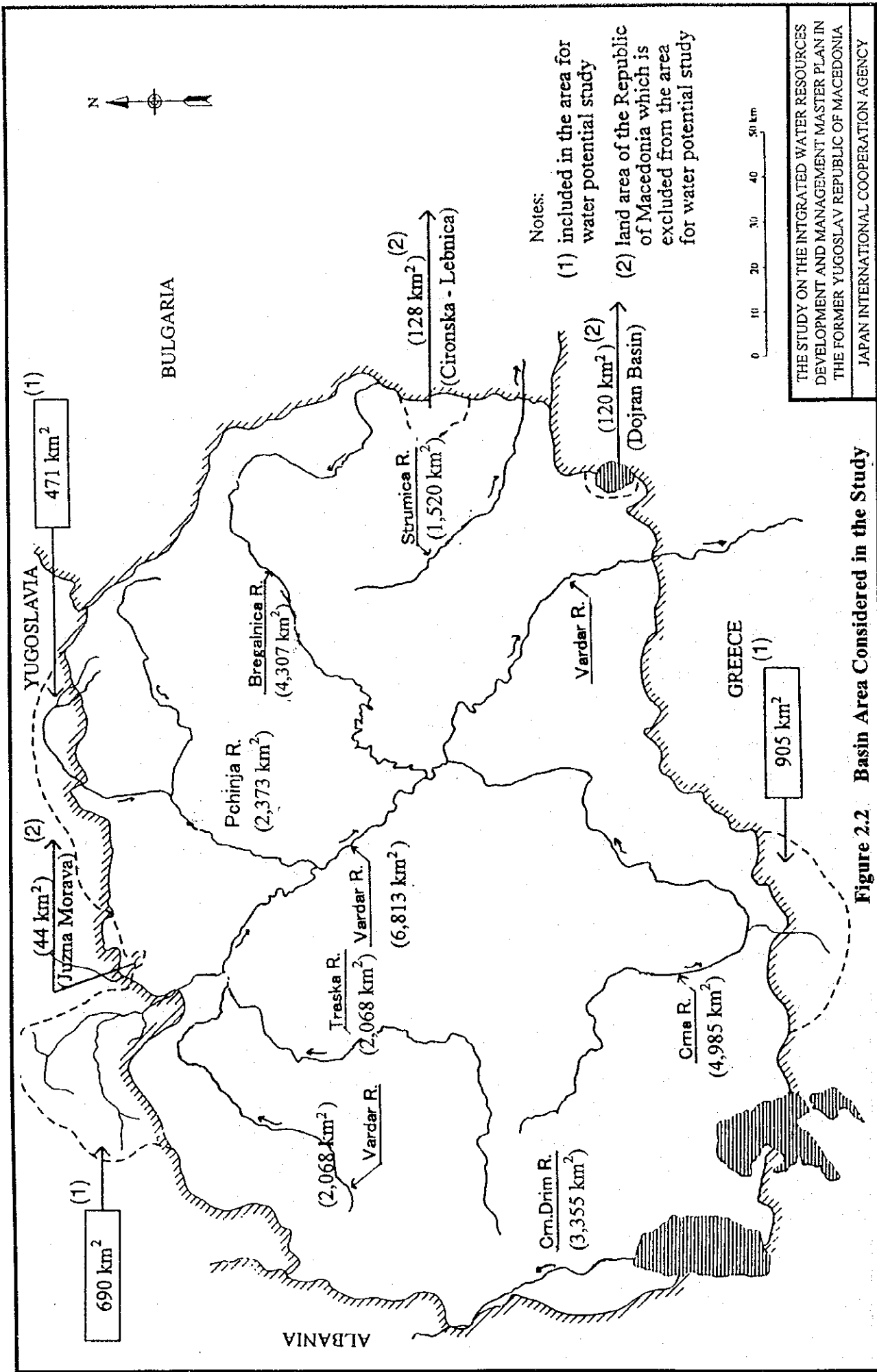
Table 2.15 MCIC Rural Water Supply Projects (1994-1998) (1/2)

Municipality	Village	Status of project	Population	Year
Kumanovo	1 Staro Nagorichani	completed (finished)	95	1996
	2 Mlado Nagorichani	completed (finished)	208	1996
	3 Chetirce	proceeding	600	1998
Kratovo	1 Turalevo	completed (finished)	300	1995
	2 Filipovci	completed (finished)	168	1995
	3 Vakav	completed (finished)	138	1995
	4 Sakulica	completed (finished)	270	1995
	5 Topolovikj	completed (finished)	60	1995/1996
	6 Shlegovo	completed (finished)	560	1996
	7 Prikovci	completed (finished)	170	1996
	8 Mushkovo	completed (finished)	80	1996
	9 Stracin	completed (finished)	135	1997
	10 Shopsko Rudari	proceeding	282	1998
Kriva Palanka	1 Duracka Reka	completed (finished)	430	1996
	2 Koshari	completed (finished)	625	1996
	3 Trnovo	completed (finished)	83	1997
Veles	1 Dolno Chichevo	completed (finished)	240	1994/1997
	2 Bistrica	completed (finished)	236	1994
	3 Melnica	completed (finished)	940	1994
	4 Sogle	completed (finished)	158	1995
	5 Dolno Jabolchisnte	completed (finished)	560	1995
	6 Choloshevo	completed (finished)	200	1995
	7 Teovo	completed (finished)	285	1995
	8 Sopot	completed (finished)	34	1995
	9 Mamutchevo	completed (finished)	460	1996
	10 Ivankovci	completed (finished)	1044	1996
	11 Gorno Orizari	completed (finished)	2400	1997
	12 Vladilovci	completed (finished)	138	1998
Sveti Nikole	1 Malino	completed (finished)	100	1994
	2 Orel	completed (finished)	53	1994
	3 Kjoselari	completed (finished)	182	1994
	4 Kadrifakovo	completed (finished)	215	1995/1997
	5 Pavleshnica	completed (finished)	140	1995
	6 Dorfulija	completed (finished)	1020	1995
	7 Milino	completed (finished)	100	1995
	8 Burilovci	completed (finished)	15	1995
	9 Karatmanovo	completed (finished)	550	1995
	10 Lozovo	completed (finished)	1480	1995
	11 Amzabegovo	completed (finished)	620	1995
	12 Crnilishte	completed (finished)	550	1996/1997
	13 Erdjelija	not completed	1100	1997
	14 Nemanjci	completed (finished)	377	1997
Shtip	1 Baltalija	completed (finished)	25	1994
	2 Puhche	completed (finished)	70	1994/1995
	3 Piperovo	completed (finished)	50	1994
	4 Vrteshka	completed (finished)	22	1994
	5 Gorachino	completed (finished)	36	1995
	6 Argulica	completed (finished)	480	1995
	7 Radanje	completed (finished)	750	1995
	8 Krupishte	completed (finished)	400	1998
	9 Crvulevo	in construction	124	1998
Probishtip	1 Troolo	completed (finished)	90	1996
	2 Strisovci	completed (finished)	115	1996
	3 Puzderci	completed (finished)	126	1996
	4 Pleshenci	not completed	350	1997
	5 Gorni Stubol	proceeding	210	1998
	6 Gorno Barbarevo	proceeding	106	1998

Table 2.15 MCIC Rural Water Supply Projects (1994-1998) (2/2)

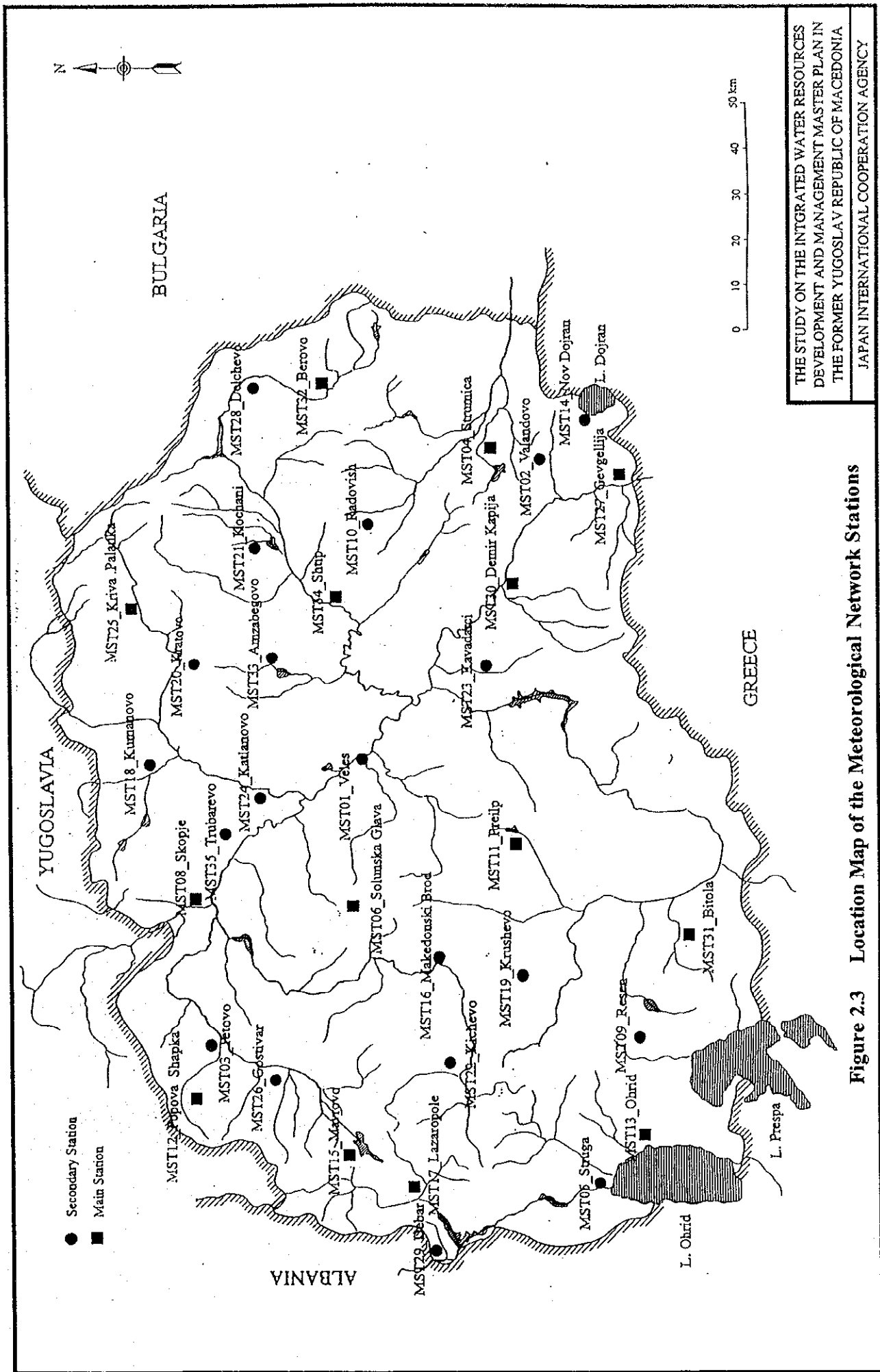
Municipality	Village	Status of project	Population	Year
Demir Hisar	1 Barakovo	completed (finished)	90	1996
	2 Brezovo	completed (finished)	120	1996
	3 Dolenci	completed (finished)	156	1996
Krushevo	1 Gorno Divjaci	proceeding	97	1998
	2 Borino	proceeding	598	1998
Prilep	1 Slavej	completed (finished)	450	1994/1995
	2 Brailevo	completed (finished)	350	1994/1995
	3 Belovodica	completed (finished)	100	1995
	4 Krushevica	completed (finished)	160	1995
	5 Zrze	not completed	230	1995
	6 Drenovci	completed (finished)	256	1995
	7 Alinci	completed (finished)	300	1995
	8 Kanatlarci	completed (finished)	1100	1995/1996
	9 Desovo	completed (finished)	1400	1995/1996
	10 Crnilishte	completed (finished)	1800	1995/96/97
	11 Vrbjani	completed (finished)	350	1996
	12 Slepche	completed (finished)	270	1996
	13 Margari	completed (finished)	104	1997
	14 Korenica	completed (finished)	115	1997
	15 Godivlje	completed (finished)	230	1997
	16 Gorno Selo	proceeding	80	1998
Kavadarci	1 Garnikovo	completed (finished)	110	1998
	2 Debrishte	proceeding	166	1998
Negotino	1 Veshje	completed (finished)	135	1996
	2 Drenovci	completed (finished)	180	1996
	3 Besvica	completed (finished)	45	1997
	4 Chiflik	proceeding	170	1998
	5 Koreshnica	proceeding	550	1998
Valandovo	1 Bashibos	completed (finished)	204	1996
	2 Kochuli	completed (finished)	89	1996
	3 Brajkovci	completed (finished)	470	1996
	4 Kalkovo	completed (finished)	250	1997
	5 Grchishte	completed (finished)	320	1997
	6 Prsten	proceeding	150	1998
Radovish	1 Dedino	completed (finished)	700	1994/1995
	2 Rakitec	completed (finished)	560	1994/1995
	3 Shturovo	completed (finished)	40	1994/1995
	4 Oraovica	completed (finished)	1900	1994
	5 D. Lipovik	completed (finished)	640	1994
	6 Jargulica	completed (finished)	850	1995
	7 Zleovo	completed (finished)	950	1995
	8 Pokrajchevo	completed (finished)	420	1995
	9 Kozbunar	completed (finished)	38	1995
	10 Ali Koch	completed (finished)	650	1996
	11 Damjan	completed (finished)	320	1996
Strumica	1 Shtuka	completed (finished)	1000	1995/1996
	2 Sushevo	completed (finished)	850	1996
	3 Edrenikovo	completed (finished)	240	1996
	4 Vladevci	completed (finished)	700	1997
Gazi Baba (Skopje)	1 Binardjik	completed (finished)	592	1994/1995
	2 Ajvatovci	completed (finished)	252	1994/1995
	3 Jurumleri	completed (finished)	2950	1996
	4 Creshevo	completed (finished)	1390	1997
Karposh (Skopje)	1 Dolno Svilare	completed (finished)	1800	1995
	2 Rashche	completed (finished)	2700	1996
Kisela Voda (Skopje)	1 Morane	completed (finished)	1500	1996
	2 Dobri Dol	completed (finished)	500	1996
	3 Sopishte	completed (finished)	3300	1996
	4 Rakotinci	completed (finished)	850	1996
Chair (Skopje)	1 Gornjani	completed (finished)	240	1995
	Total		57,482	





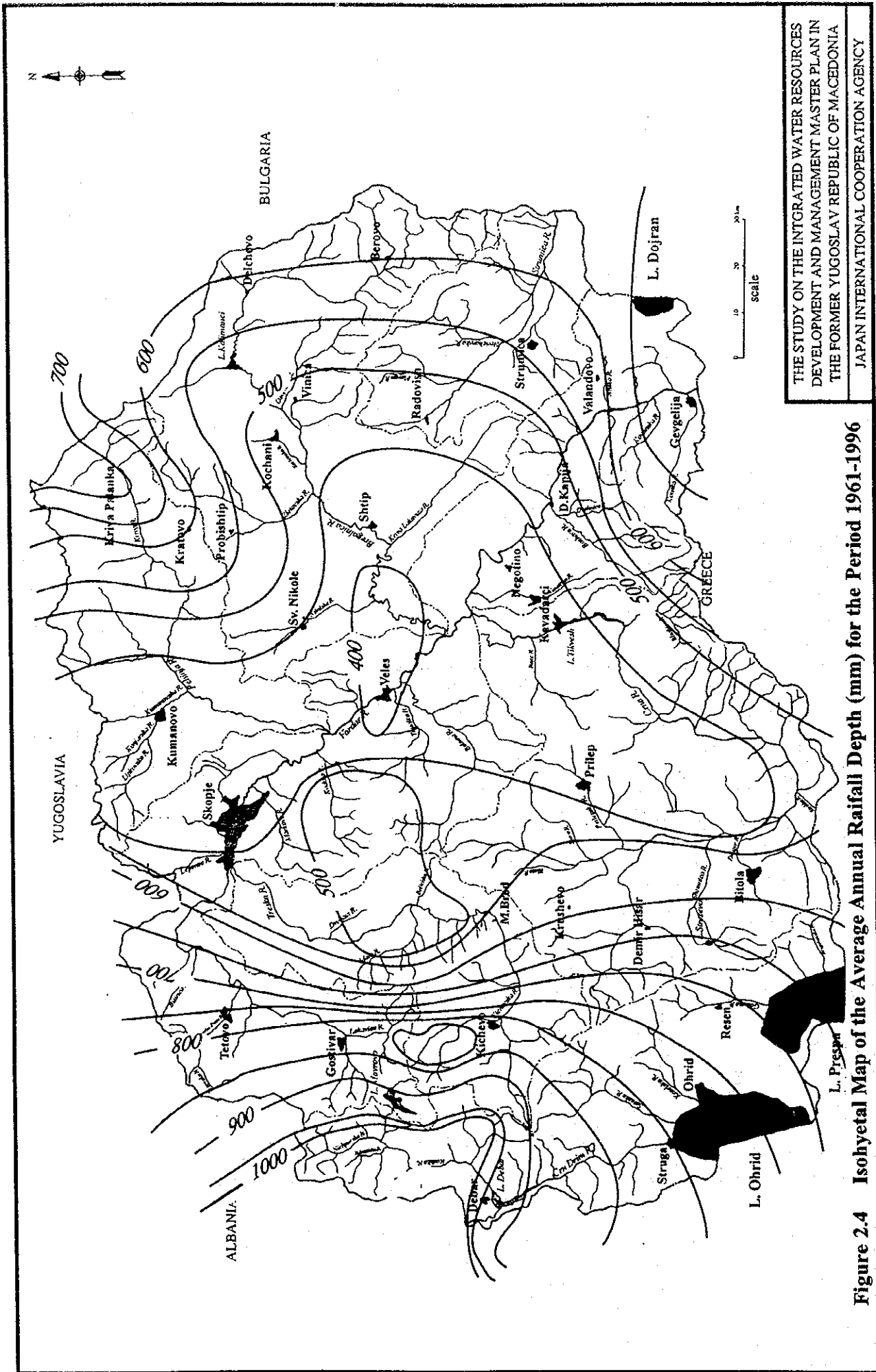
THE STUDY ON THE INTEGRATED WATER RESOURCES DEVELOPMENT AND MANAGEMENT MASTER PLAN IN THE FORMER YUGOSLAV REPUBLIC OF MACEDONIA  
 JAPAN INTERNATIONAL COOPERATION AGENCY

Figure 2.2 Basin Area Considered in the Study



THE STUDY ON THE INTEGRATED WATER RESOURCES  
 DEVELOPMENT AND MANAGEMENT MASTER PLAN IN  
 THE FORMER YUGOSLAV REPUBLIC OF MACEDONIA  
 JAPAN INTERNATIONAL COOPERATION AGENCY

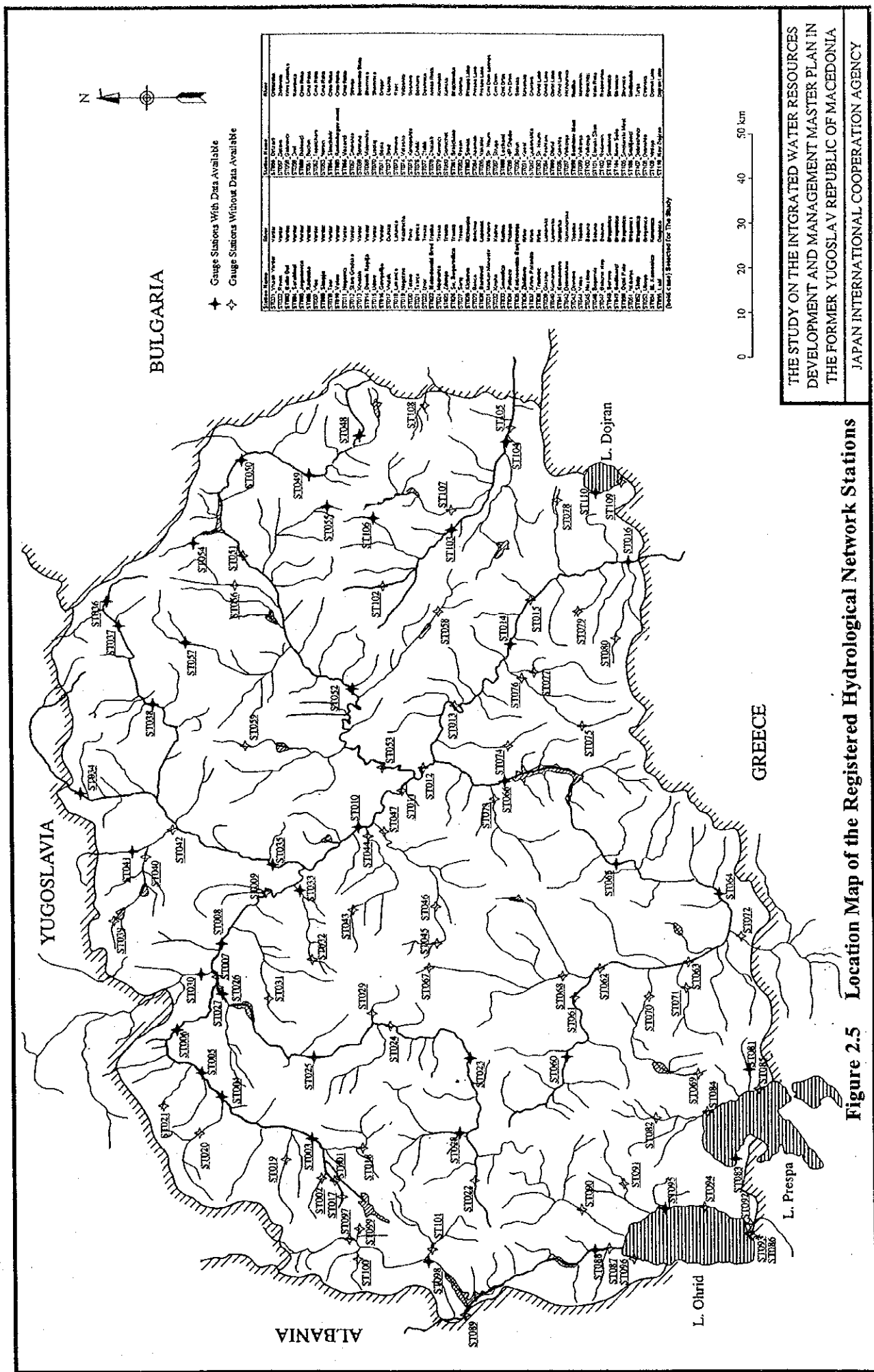
Figure 2.3 Location Map of the Meteorological Network Stations



THE STUDY ON THE INTEGRATED WATER RESOURCES  
 DEVELOPMENT AND MANAGEMENT MASTER PLAN IN  
 THE FORMER YUGOSLAV REPUBLIC OF MACEDONIA  
 JAPAN INTERNATIONAL COOPERATION AGENCY

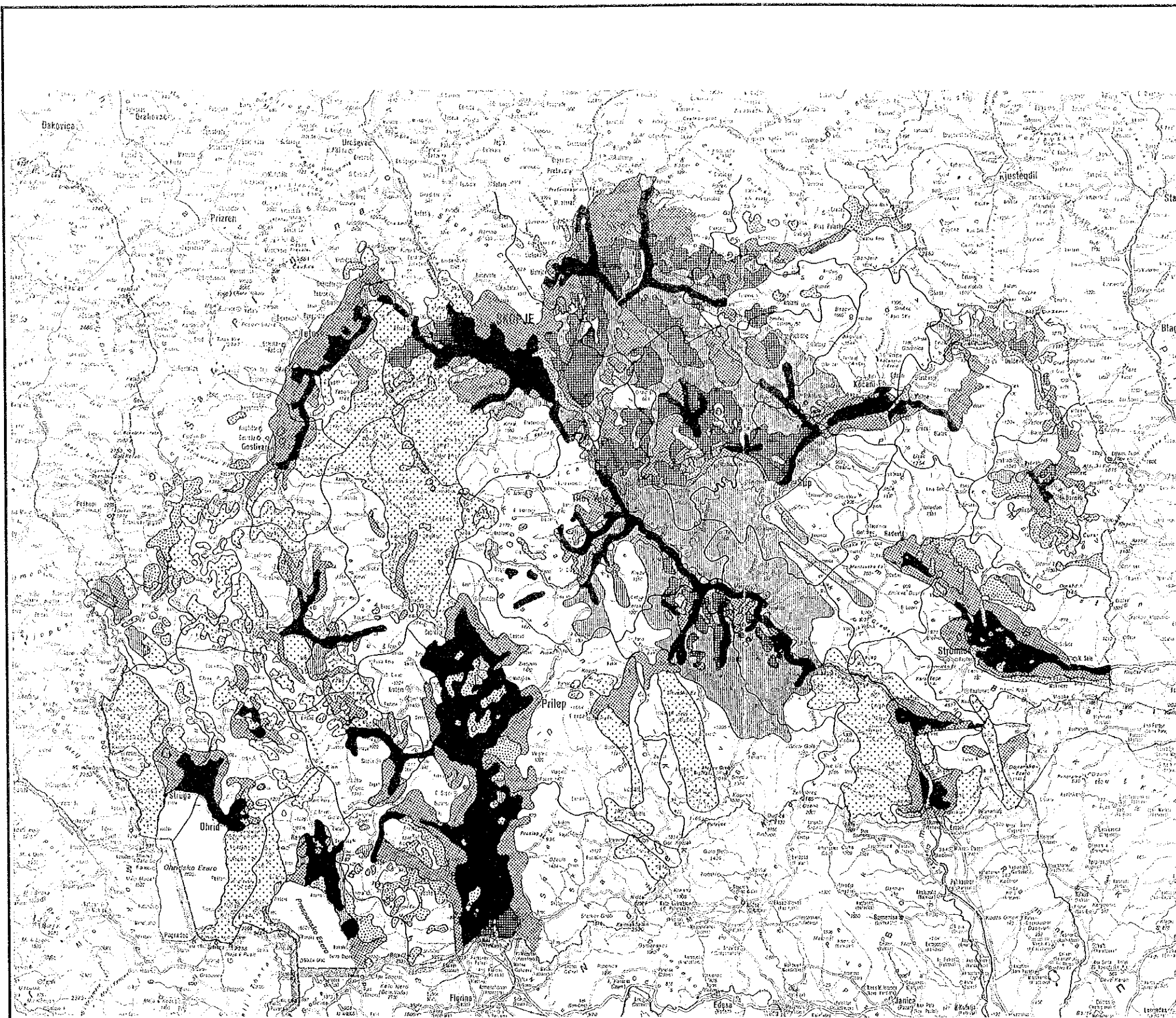
Figure 2.4 Isohyetal Map of the Average Annual Rainfall Depth (mm) for the Period 1961-1996





THE STUDY ON THE INTEGRATED WATER RESOURCES  
 DEVELOPMENT AND MANAGEMENT MASTER PLAN IN  
 THE FORMER YUGOSLAV REPUBLIC OF MACEDONIA  
 JAPAN INTERNATIONAL COOPERATION AGENCY

Figure 2.5 Location Map of the Registered Hydrological Network Stations



	1. I class	190462 ha
	2. II class	94700 ha
	3. III class	368995 ha
	4. IV class	230616 ha
	5. V class	974521 ha
	6. VI class	314385 ha
	7. VII class	369521 ha

Note. Above areas are figures in ATLAS Book and different from those in Statistical Yearbook (1997).

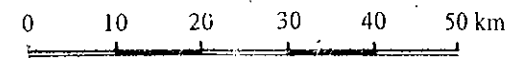


Figure 2.6 Soil Map

THE STUDY ON THE INTEGRATED WATER RESOURCES DEVELOPMENT AND MANAGEMENT MASTER PLAN IN THE FORMER YUGOSLAV REPUBLIC OF MACEDONIA  
 JAPAN INTERNATIONAL COOPERATION AGENCY

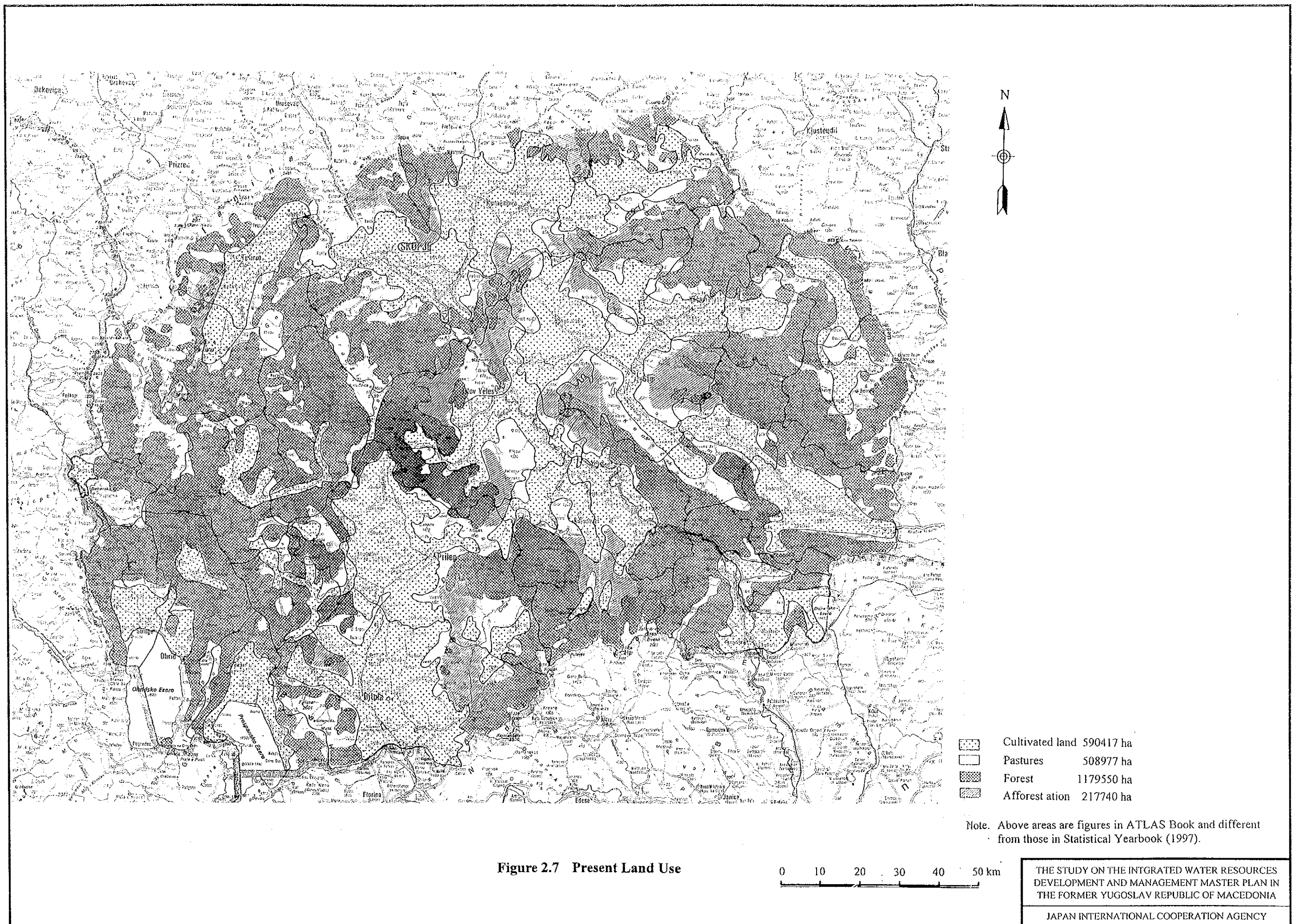


Figure 2.7 Present Land Use

0 10 20 30 40 50 km

THE STUDY ON THE INTEGRATED WATER RESOURCES DEVELOPMENT AND MANAGEMENT MASTER PLAN IN THE FORMER YUGOSLAV REPUBLIC OF MACEDONIA  
 JAPAN INTERNATIONAL COOPERATION AGENCY



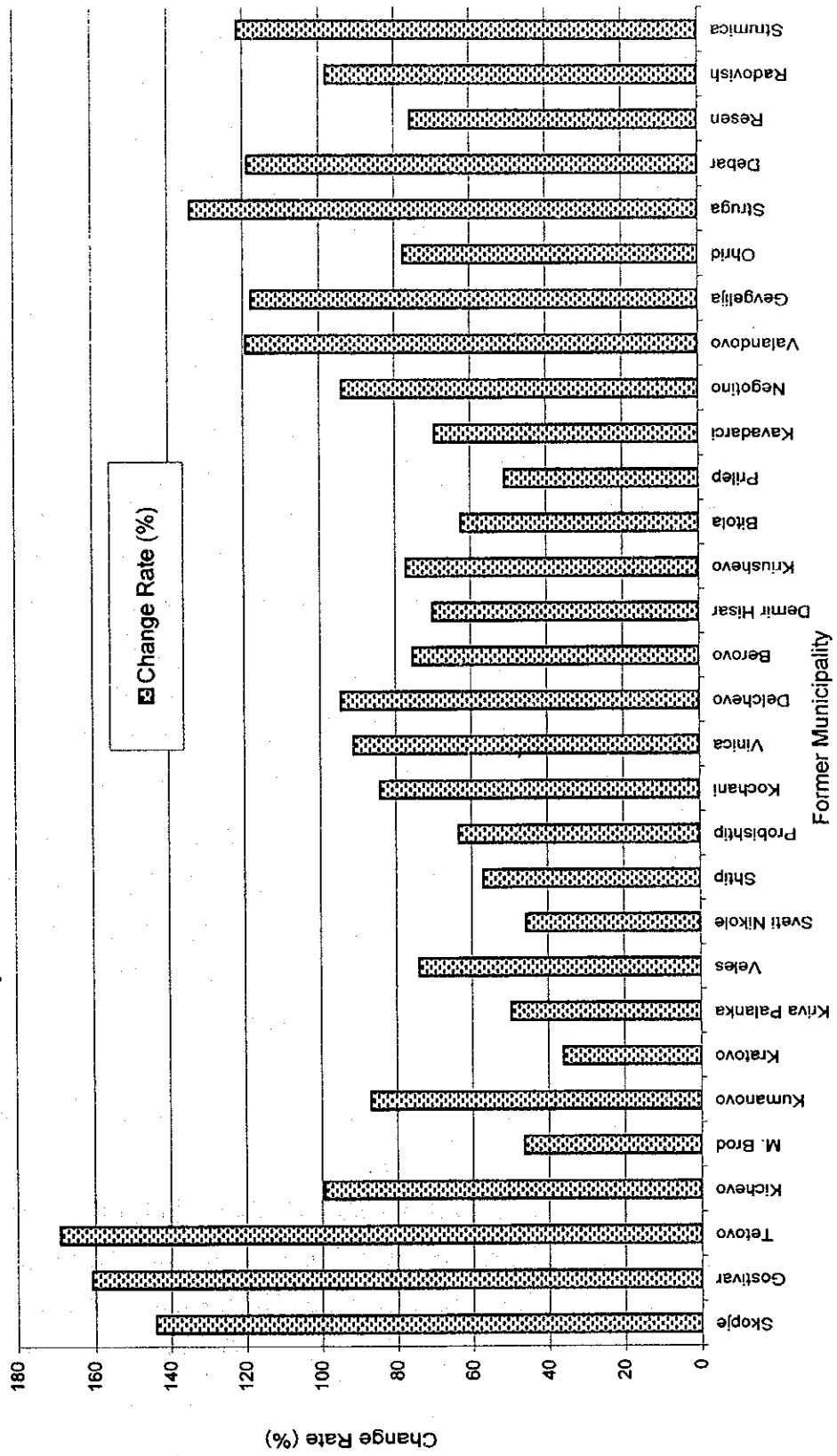


Figure 2.8 Rural Population Change for the Period 1961-1991

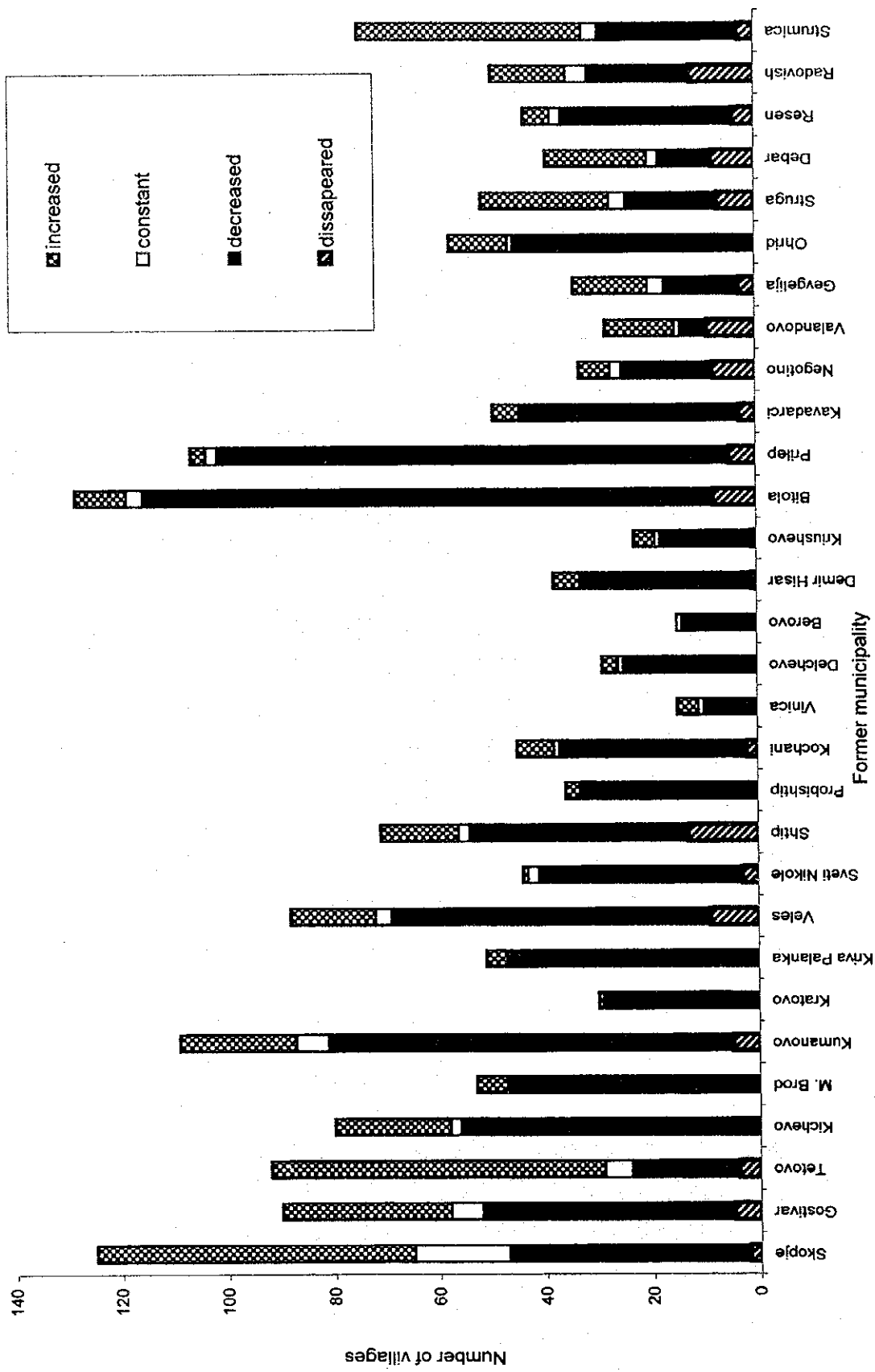


Figure 2.9 Domestic Migration for the Period 1961-1991

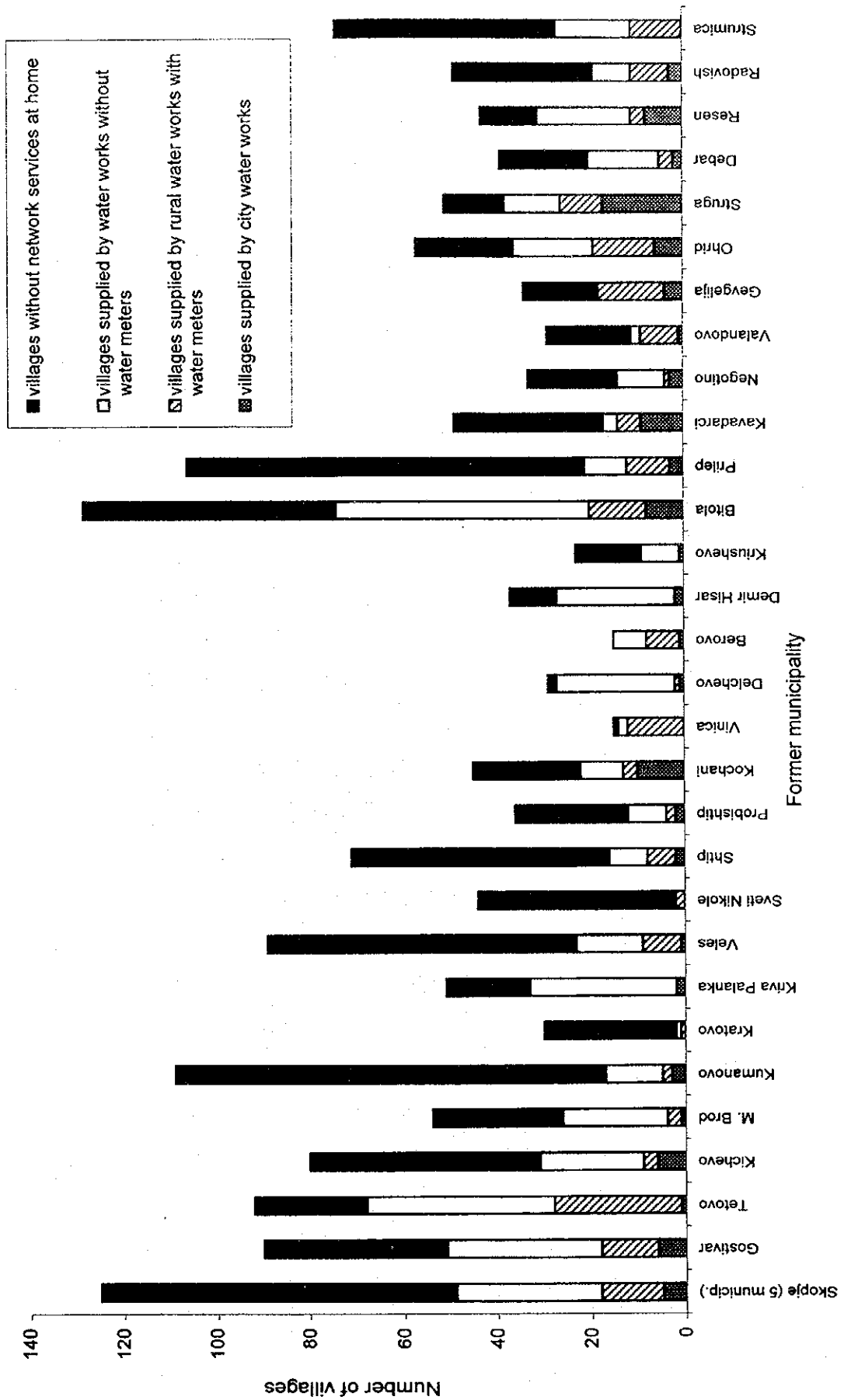


Figure 2.10 Numbers of Villages by Water Supply Type in 1991

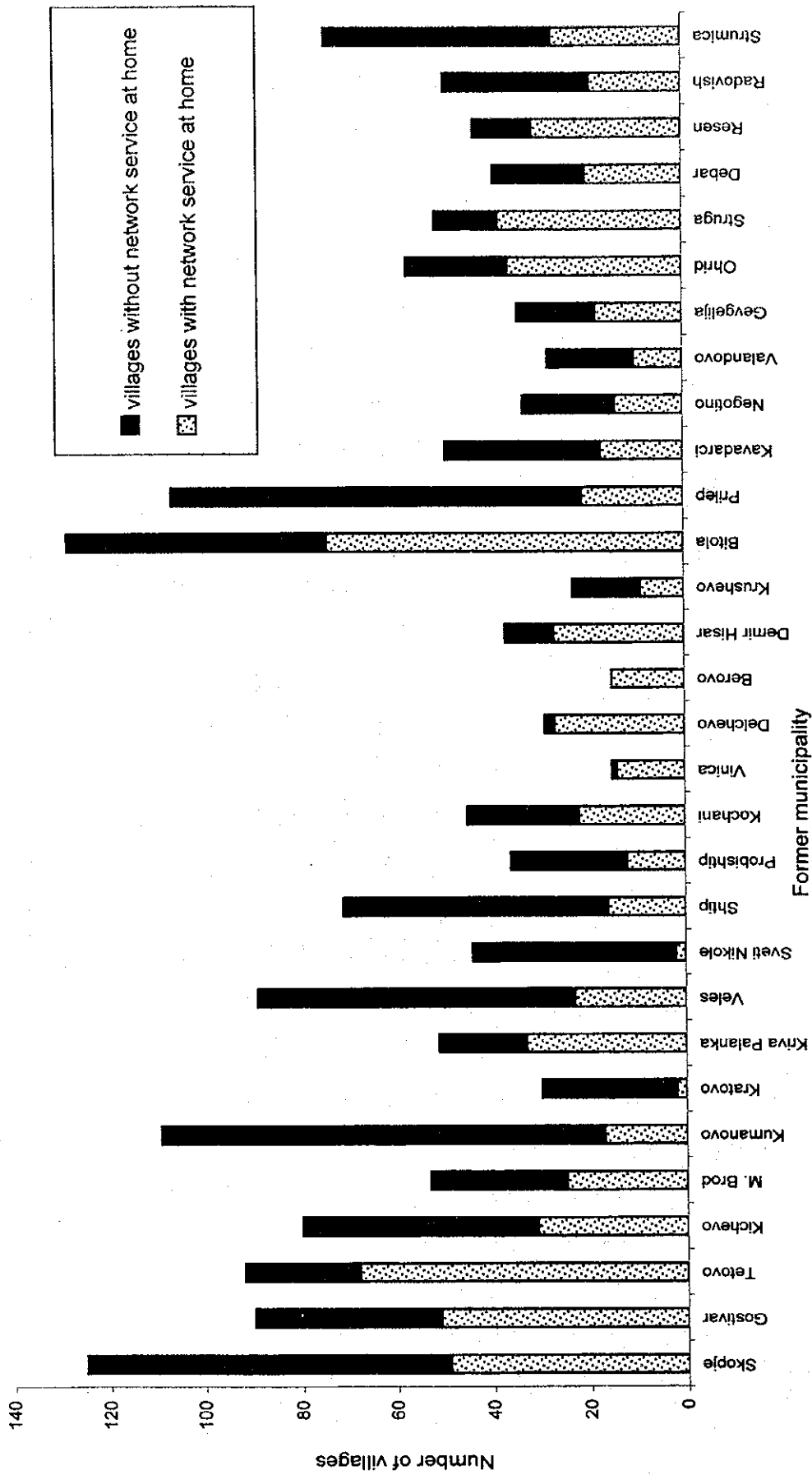


Figure 2.11 Numbers of Villages Without Network Service at Home in 1991





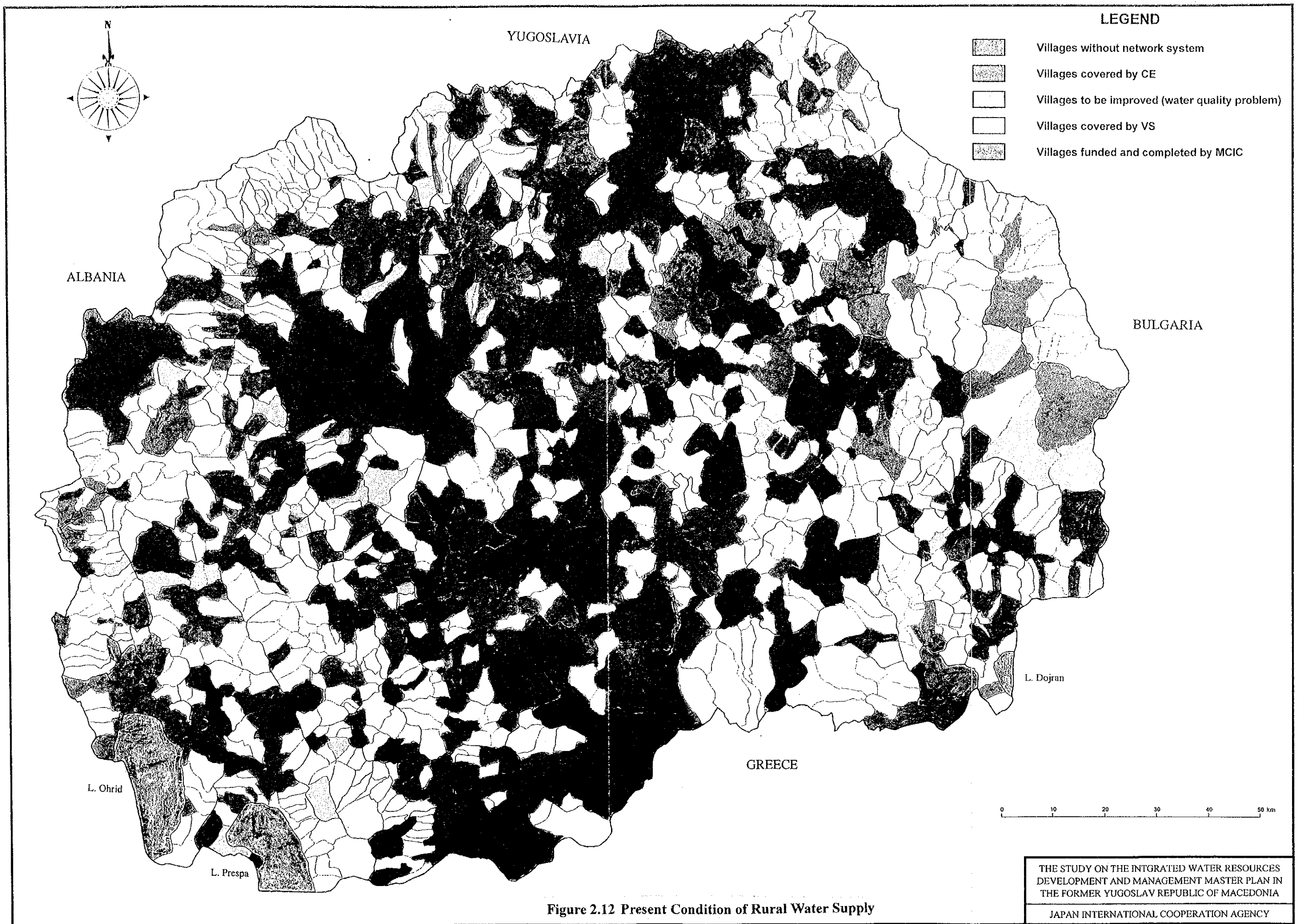


Figure 2.12 Present Condition of Rural Water Supply



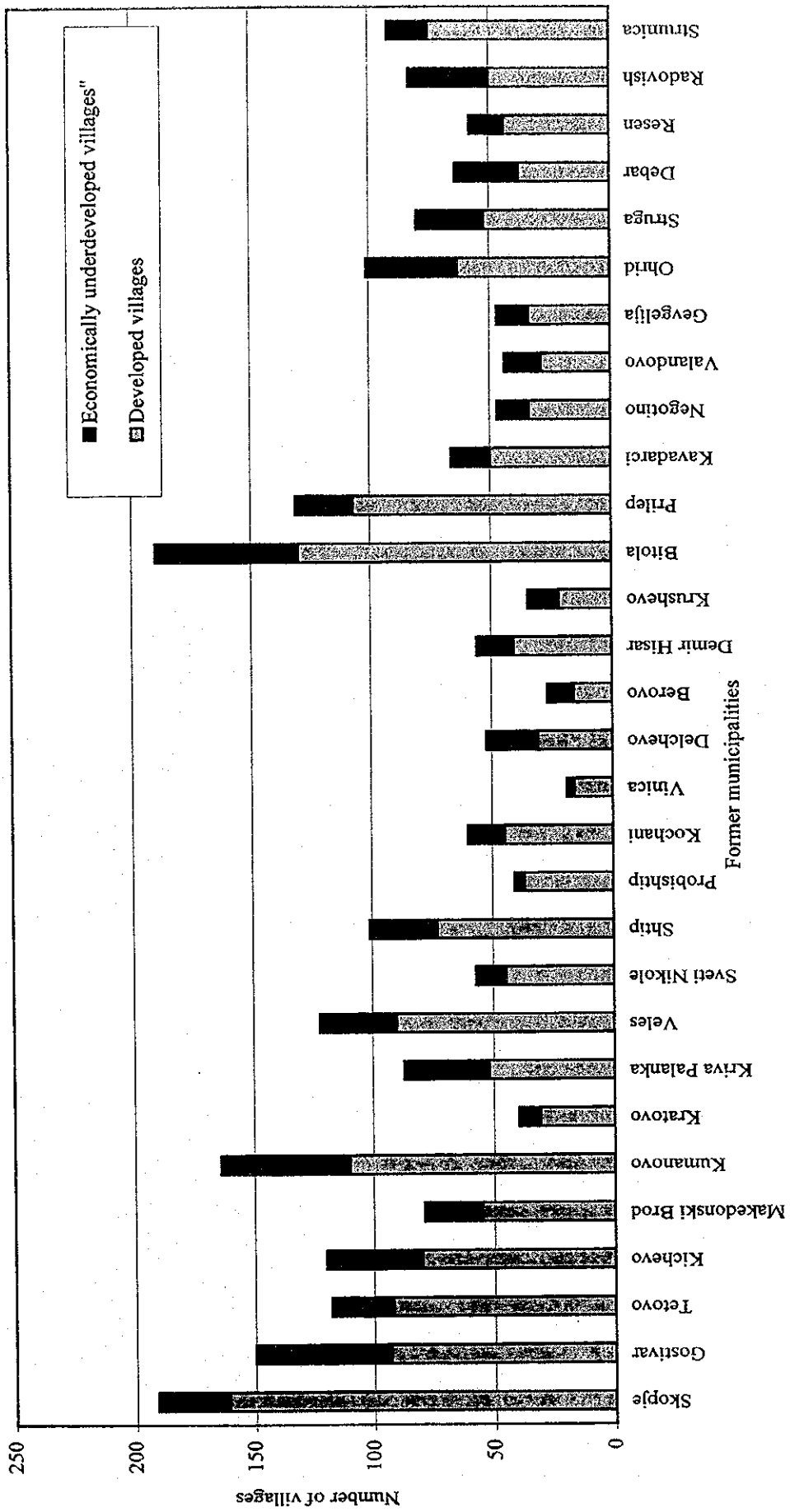
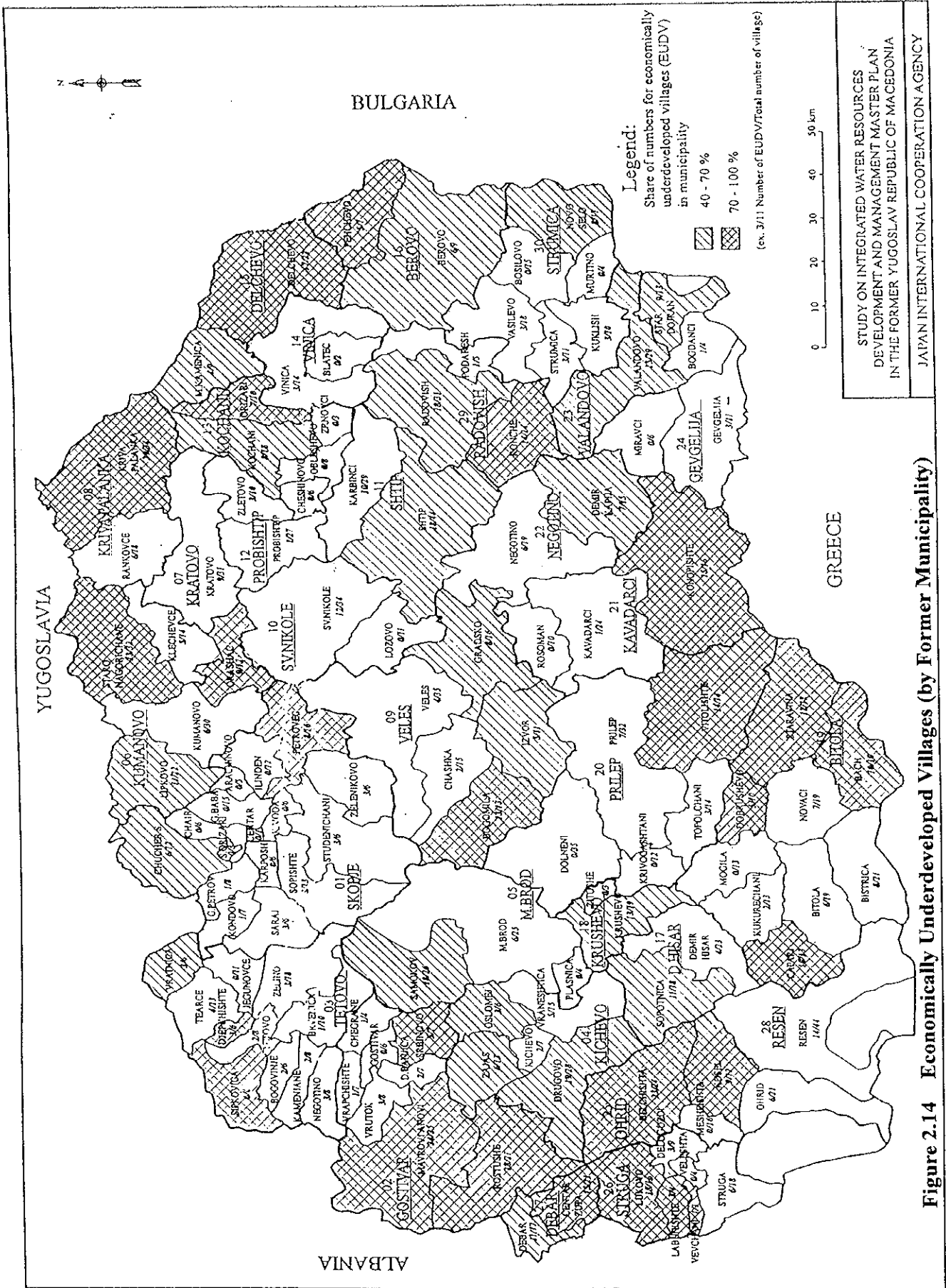


Figure 2.13 Economically Underdeveloped Villages by Former Municipality





**Figure 2.14 Economically Underdeveloped Villages (by Former Municipality)**

STUDY ON INTEGRATED WATER RESOURCES DEVELOPMENT AND MANAGEMENT MASTER PLAN IN THE FORMER YUGOSLAV REPUBLIC OF MACEDONIA  
 JAPAN INTERNATIONAL COOPERATION AGENCY

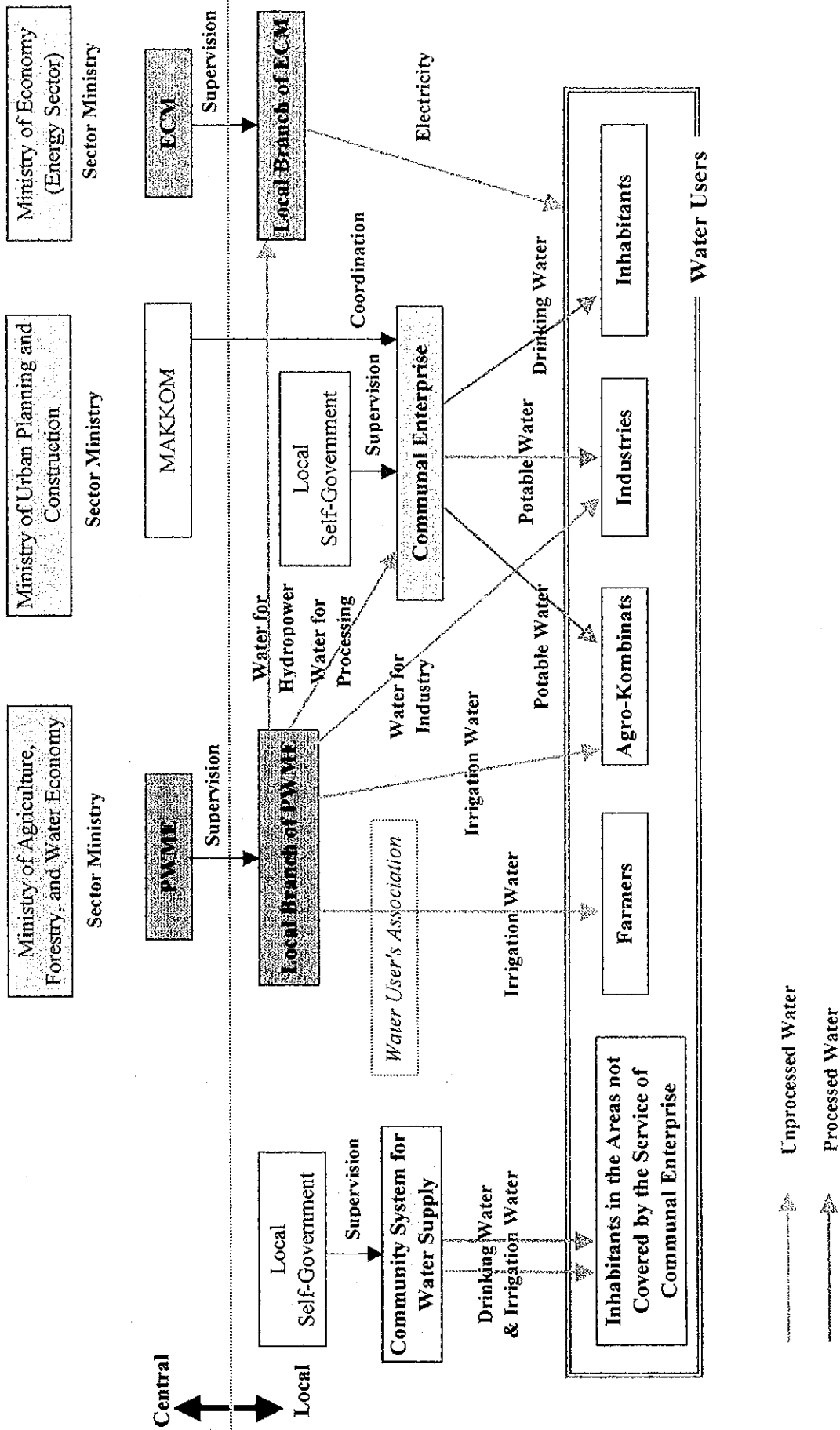


Figure 2.15 Organization of Water Supply System in Macedonia

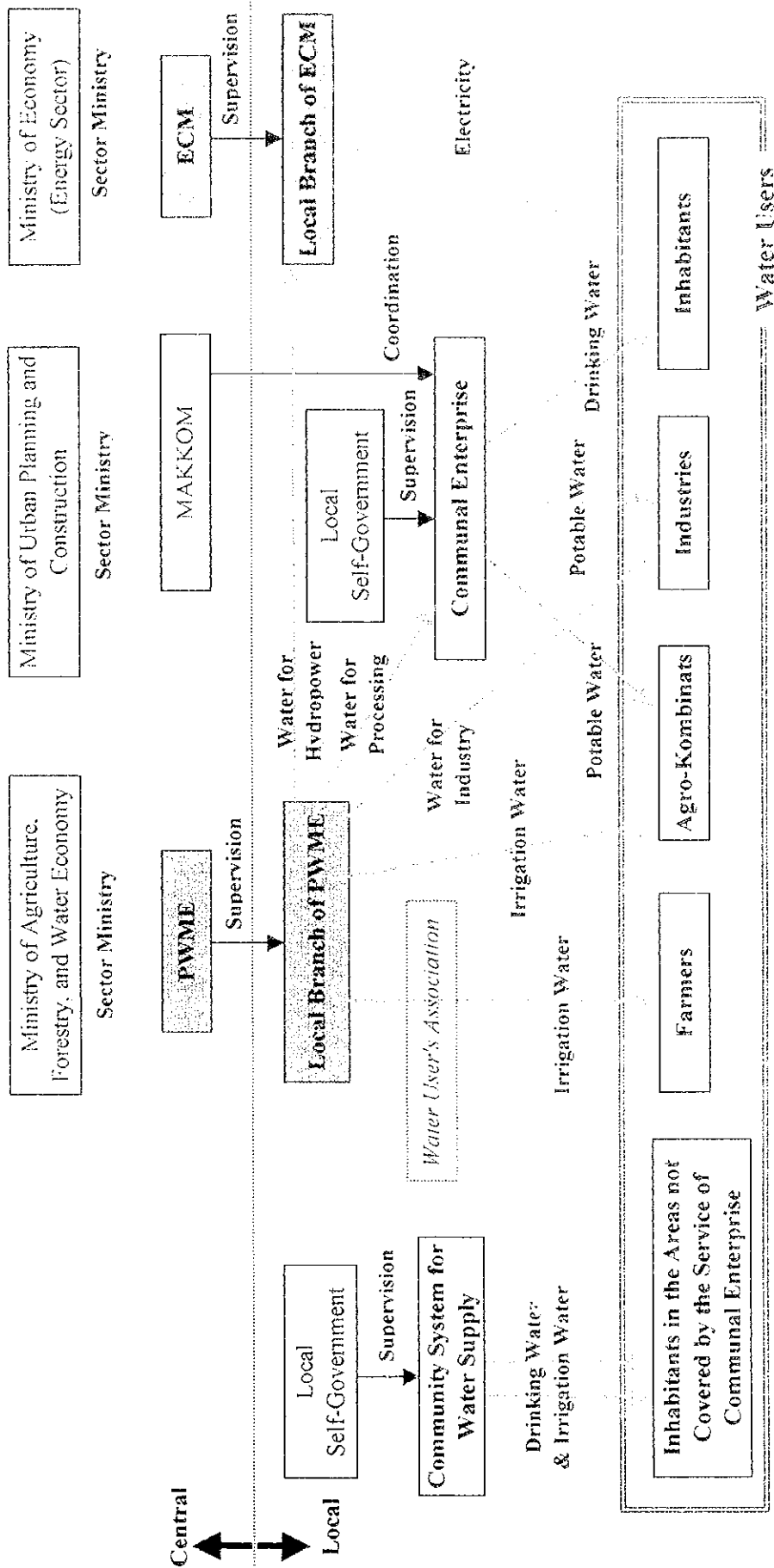


Figure 2.15 Organization of Water Supply System in Macedonia



